

-200

0

1000

1400

+600

200

400

ERDAUZ FAULT

E5-10

E6-10

E7-10

E6-15

E7-5

E6-20

E7-20

E6-25

E7-25

DK-78

DK-63

DK-79

DK-70

DK-69

DK-67

DK-74

DK-75

DK-76

DK-77

DK-78

DK-79

DK-80

DK-81

DK-82

DK-83

DK-84

DK-85

DK-86

DK-87

DK-88

DK-89

DK-90

DK-91

DK-92

DK-93

DK-94

DK-95

DK-96

DK-97

DK-98

DK-99

DK-100

2800

2850

2900

2950

3000

国際協力事業団

11637

図書資料室蔵書

PL.I-6(2)

GEOLOGICAL SURVEY

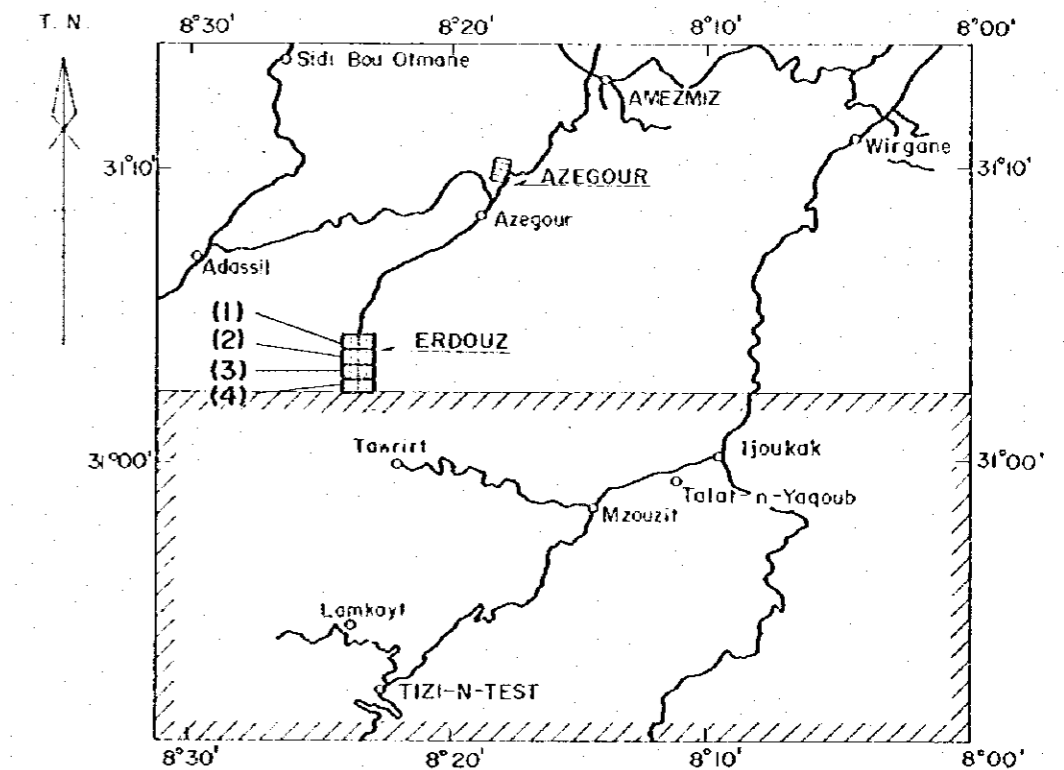
OF

HAUT ATLAS OCCIDENTAL AREA, MOROCCO

(PHASE II)

LOCATION MAP OF SOIL SAMPLES

IN ERDOUZ SECTOR

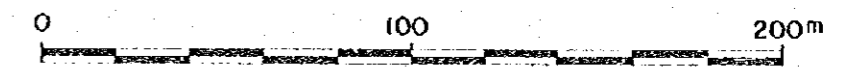


JAPAN INTERNATIONAL COOPERATION AGENCY

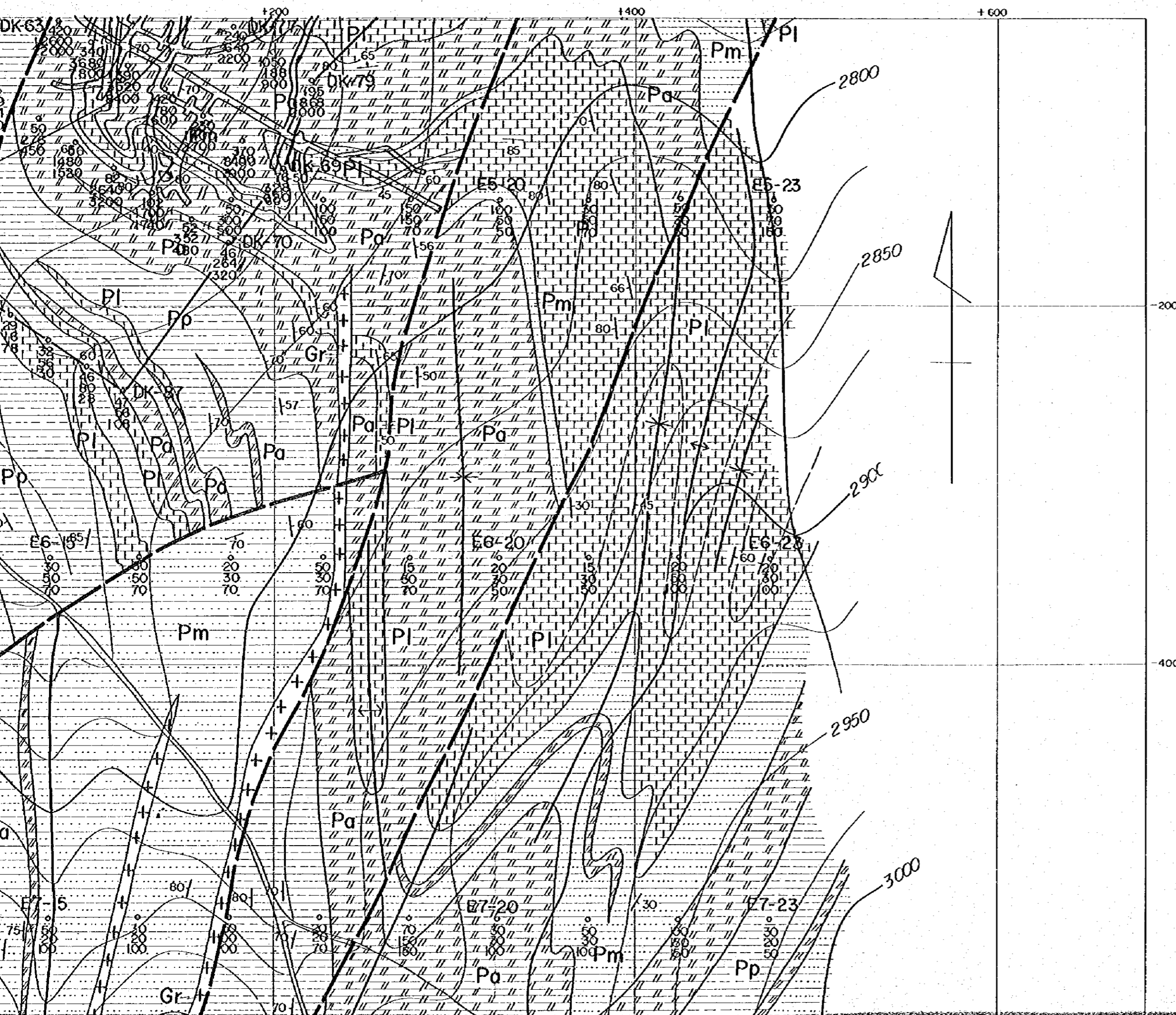
METAL MINING AGENCY OF JAPAN

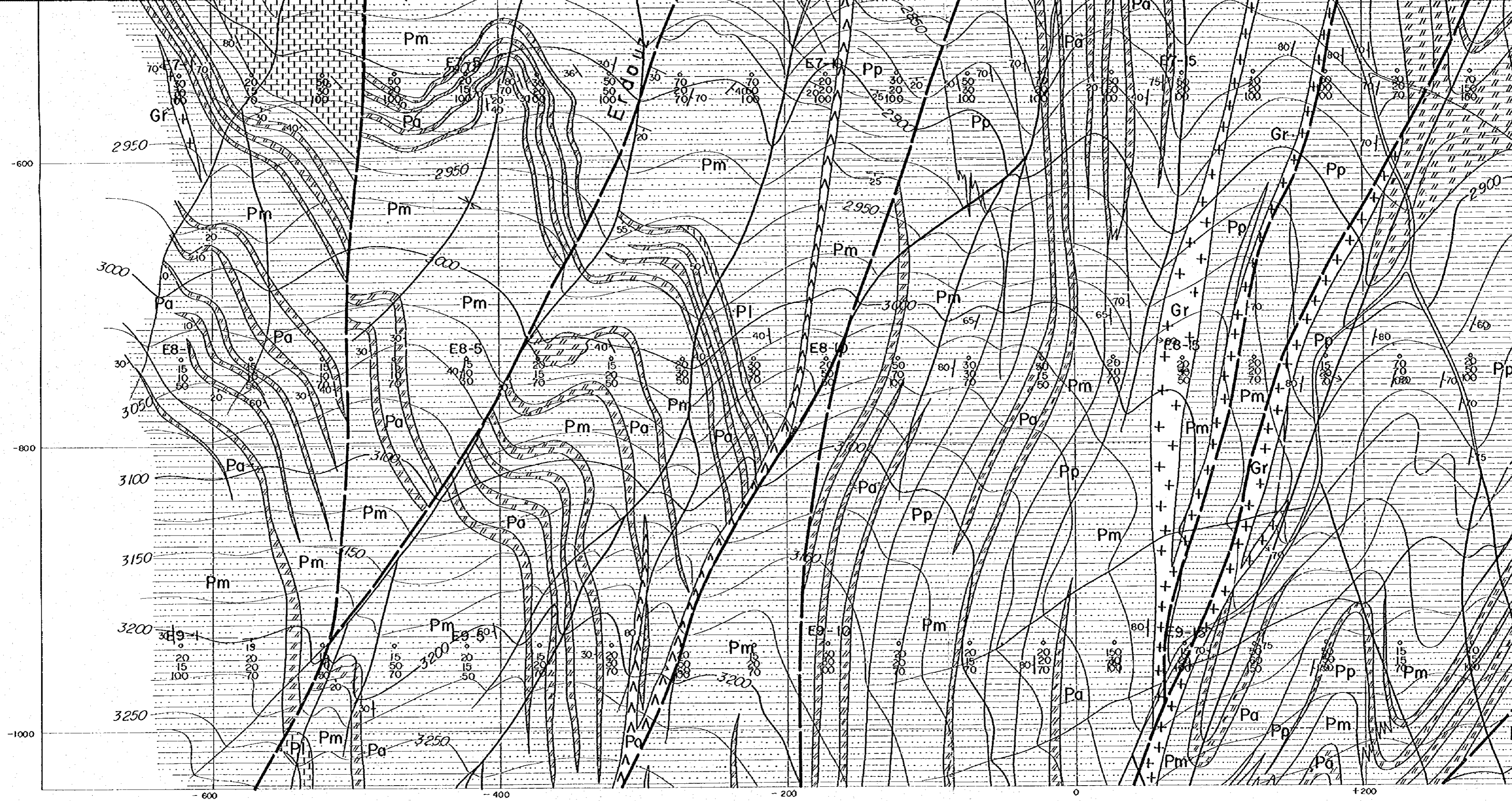
FEBRUARY 1985

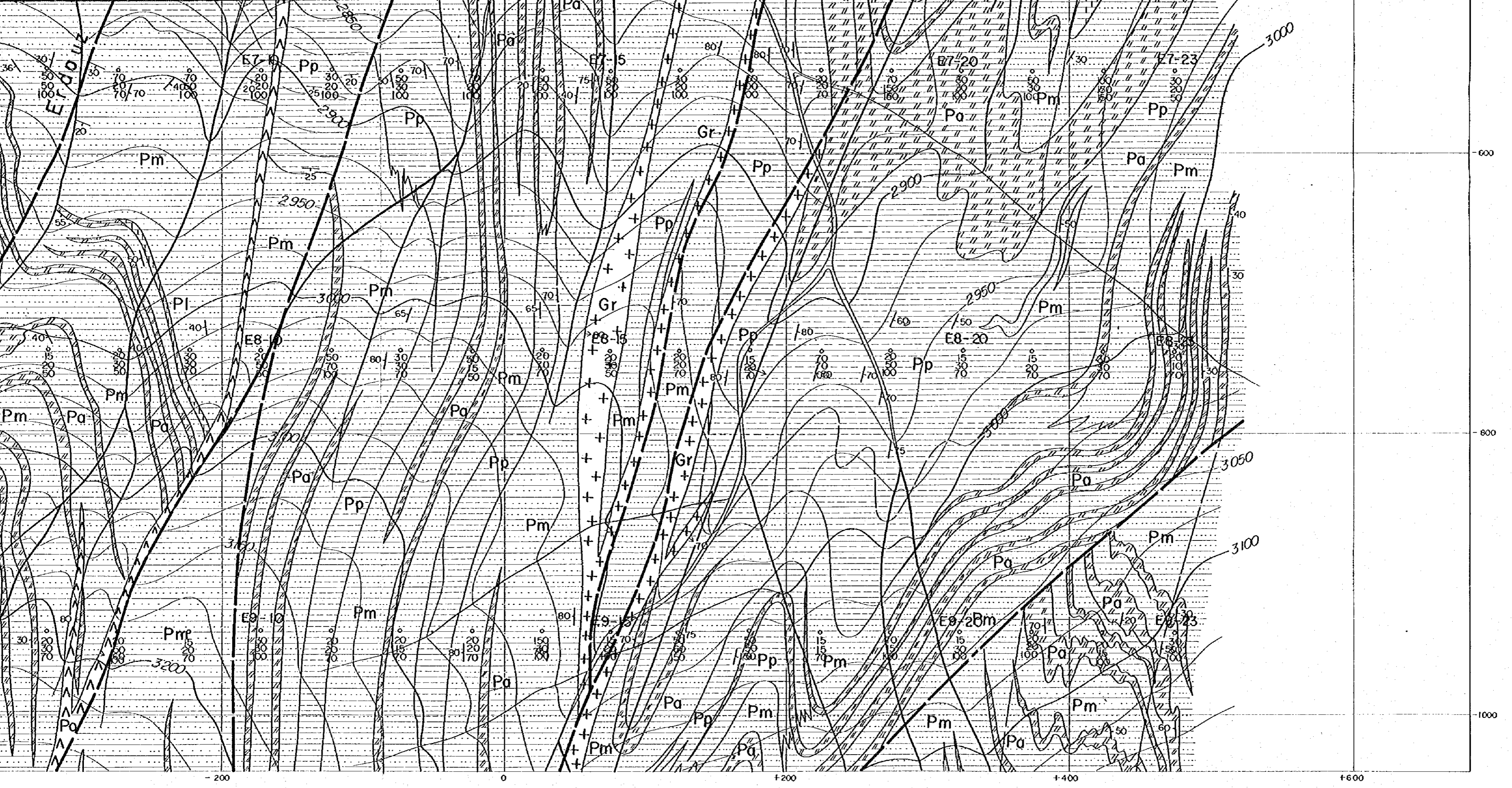
Prepared by MINDECO

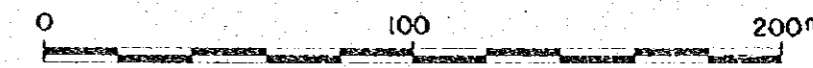
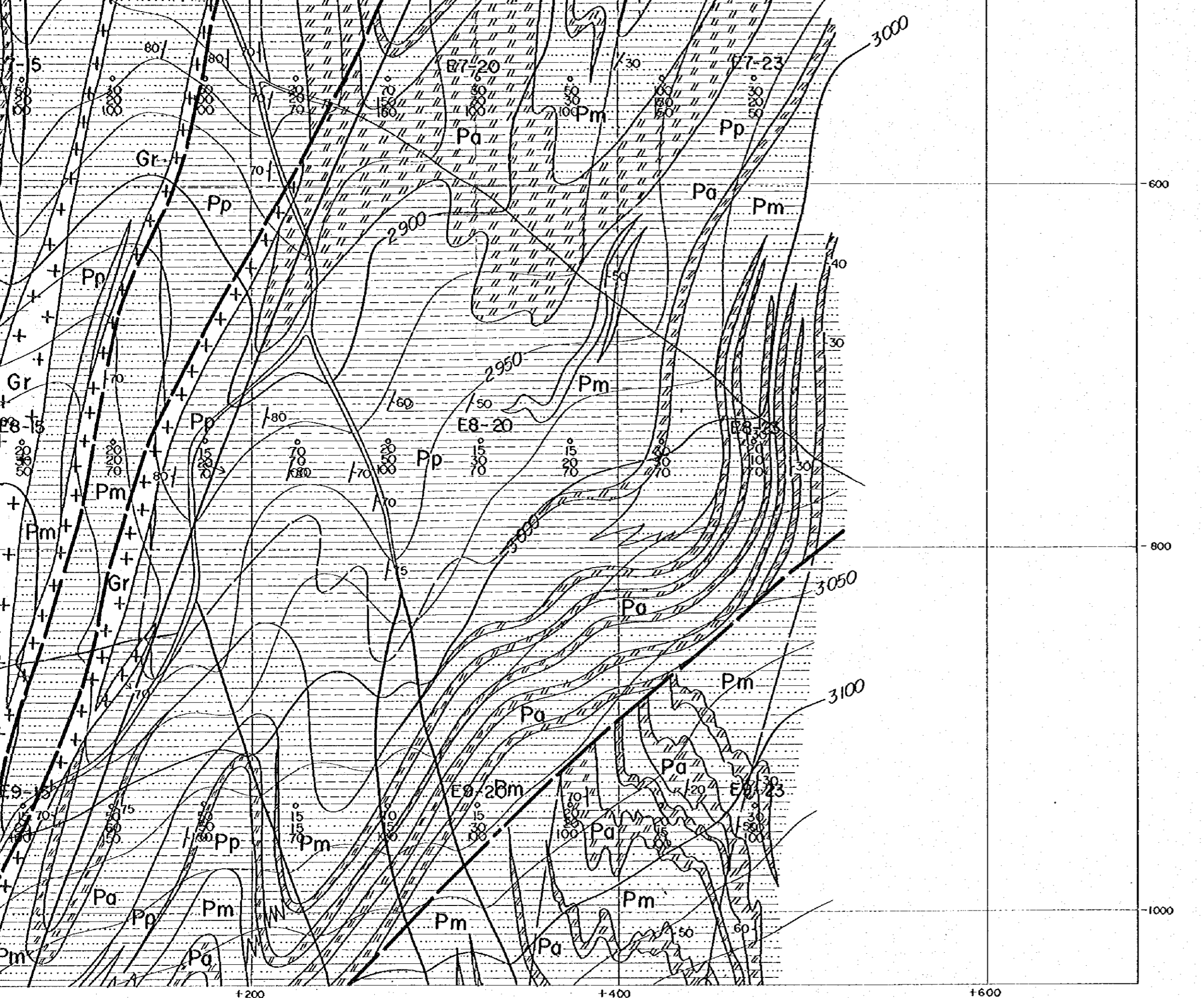


Scale 1 : 2,000



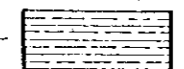
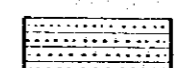
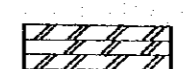
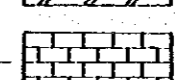
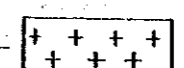
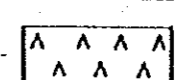


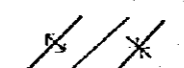
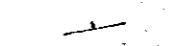




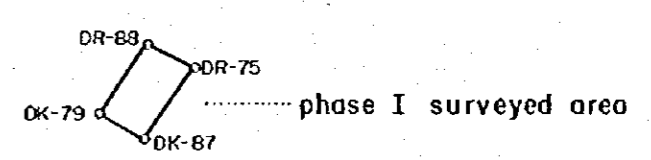


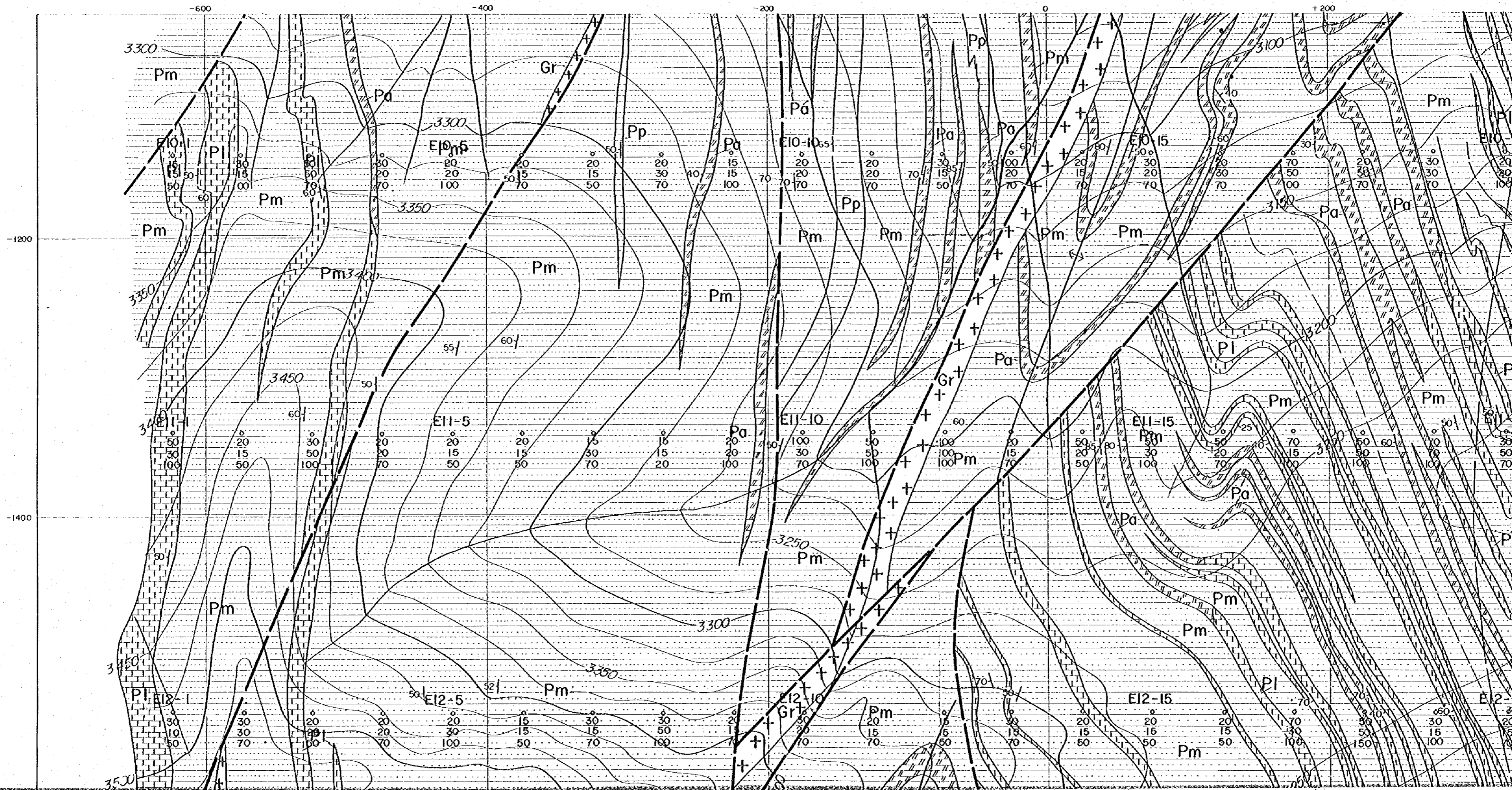
Scale 1 : 2,000

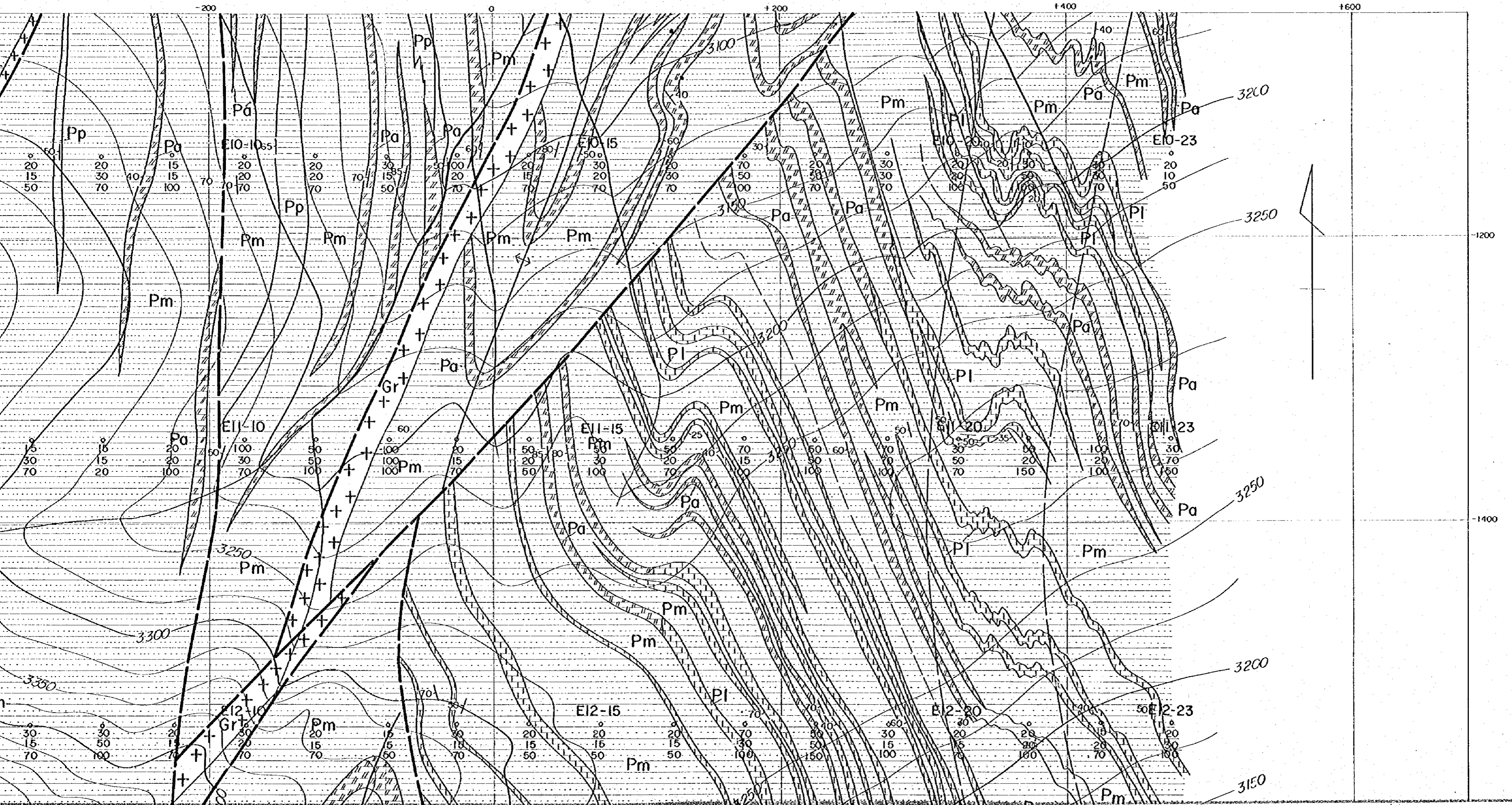
LEGEND

- | | | |
|----------------|---|----------------------------------|
| Cambrian |  | Pp pelitic schist |
| |  | Pm psammitic schist |
| |  | Pa calcareous schist |
| |  | Pl limestone |
| Intrusive rock |  | Gr granite |
| |  | Po porphyrite |
| |  | vein |
| |  | fault |
| |  | anticlinal axis / synclinal axis |
| |  | bedding plane |

- E4-23
 o sample location
 20 Cu ppm
 50 Pb ppm
 100 Zn ppm





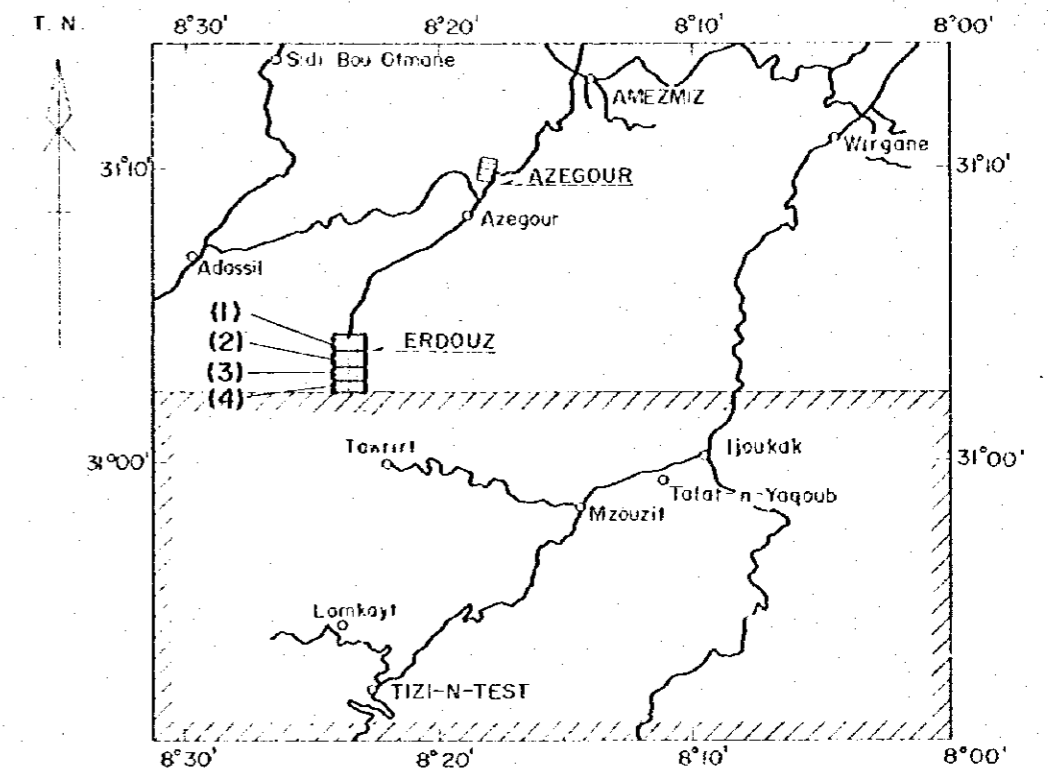


GEOLOGICAL SURVEY

OF

HAUT ATLAS OCCIDENTAL AREA, MOROCCO
(PHASE II)

LOCATION MAP OF SOIL SAMPLES
IN ERDOUZ SECTOR

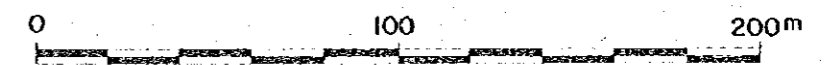


JAPAN INTERNATIONAL COOPERATION AGENCY

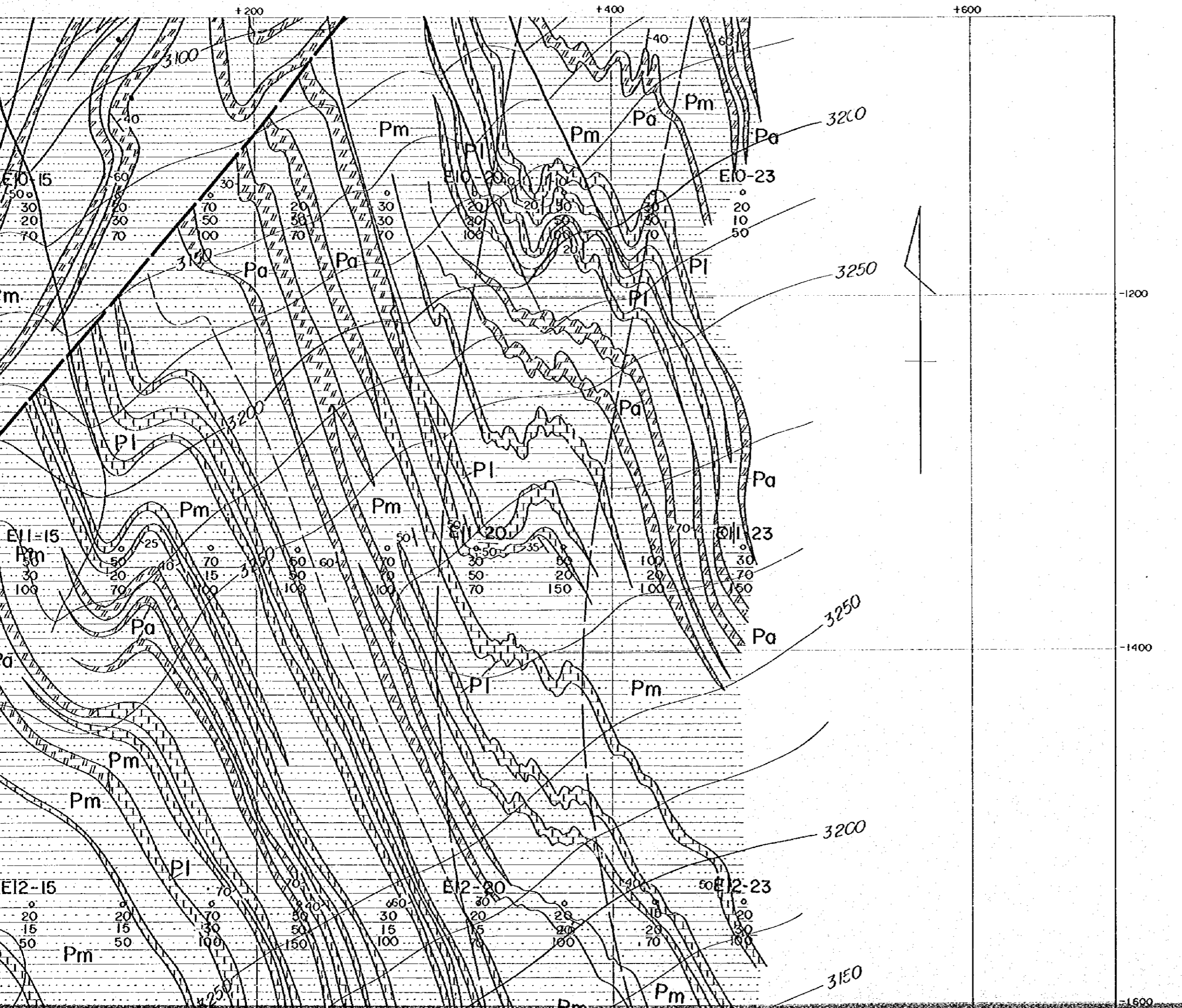
METAL MINING AGENCY OF JAPAN

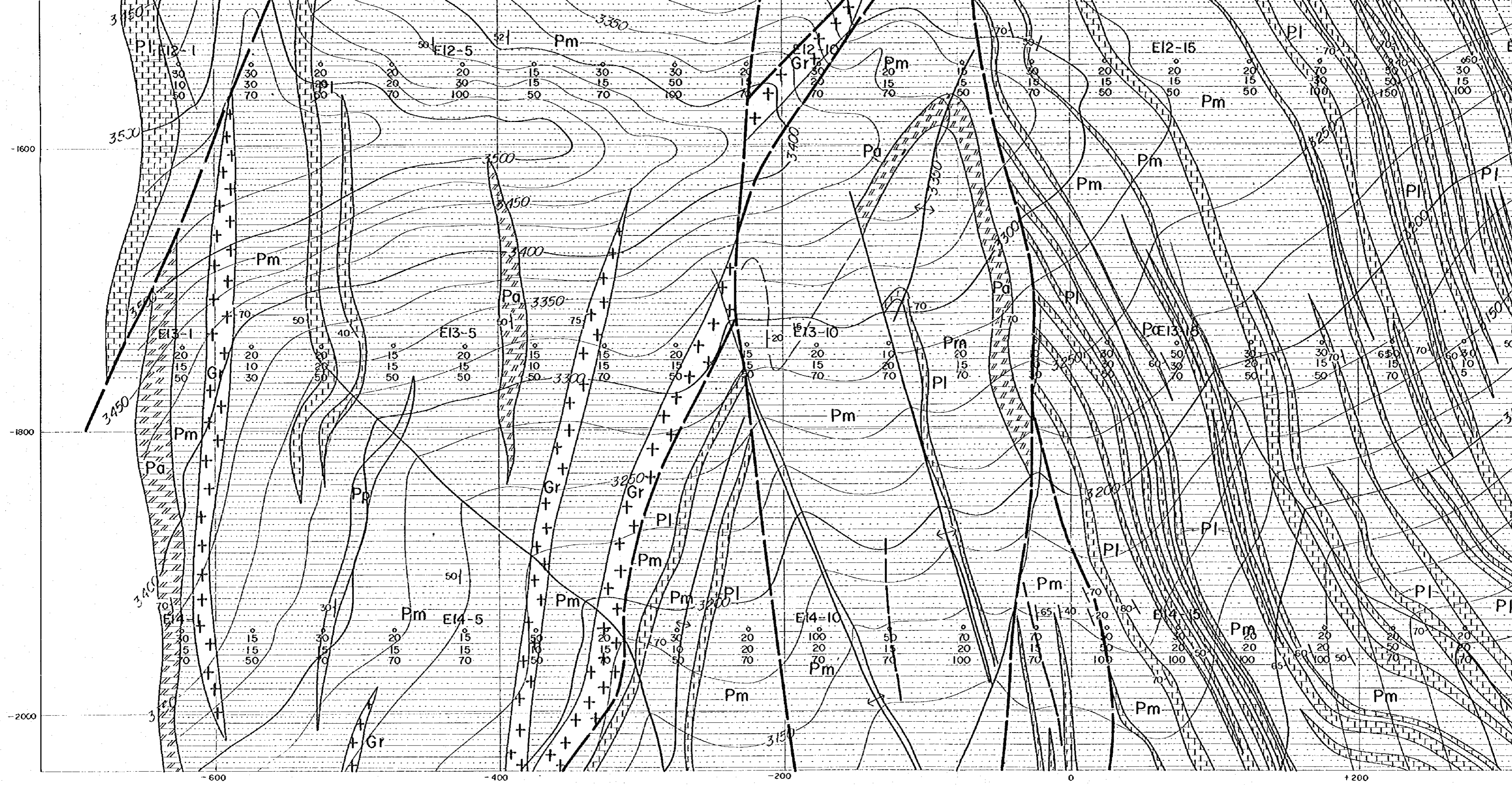
FEBRUARY 1985

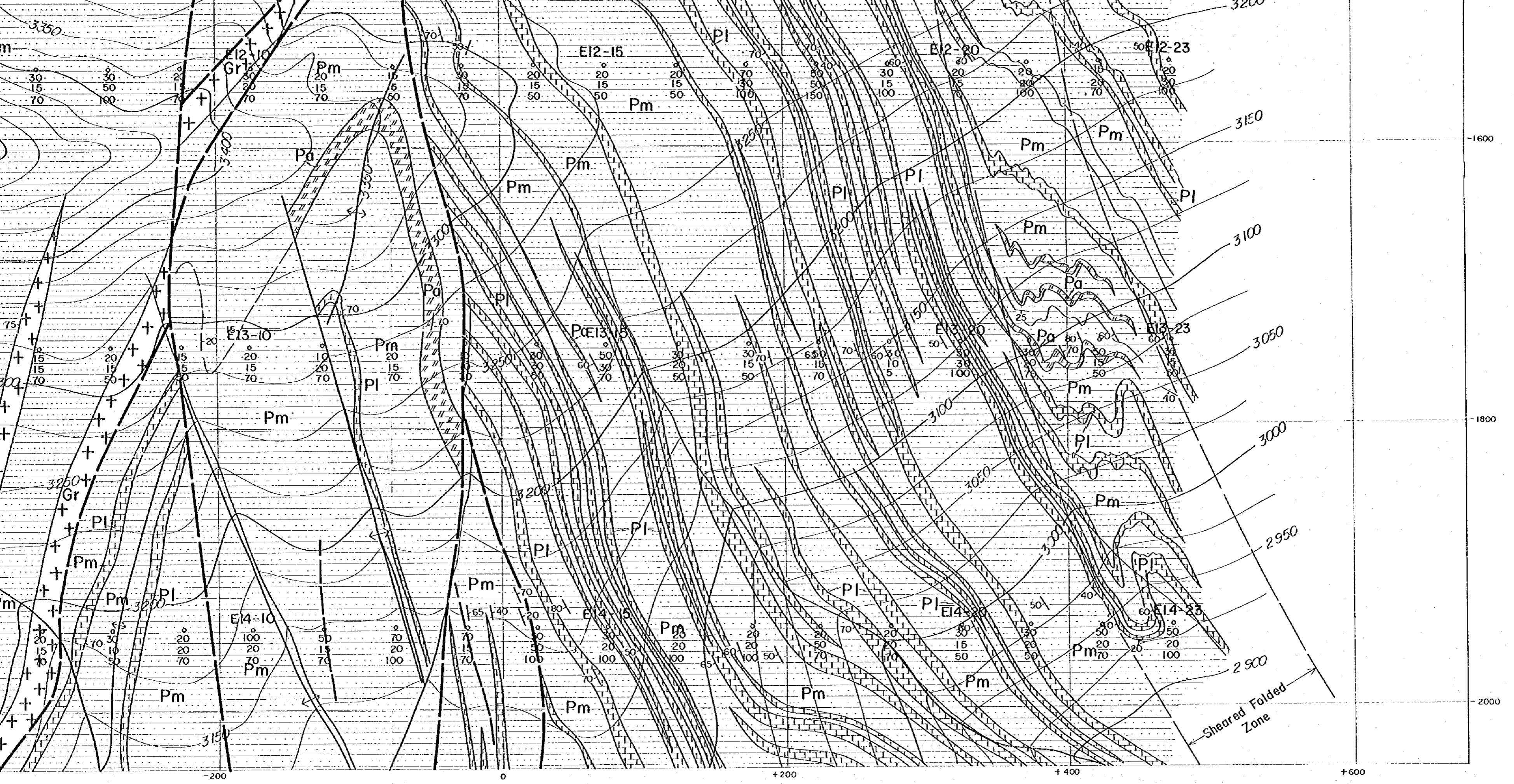
Prepared by MINDECO

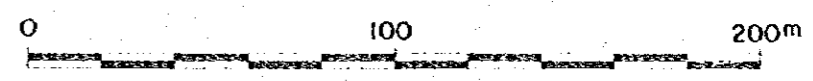
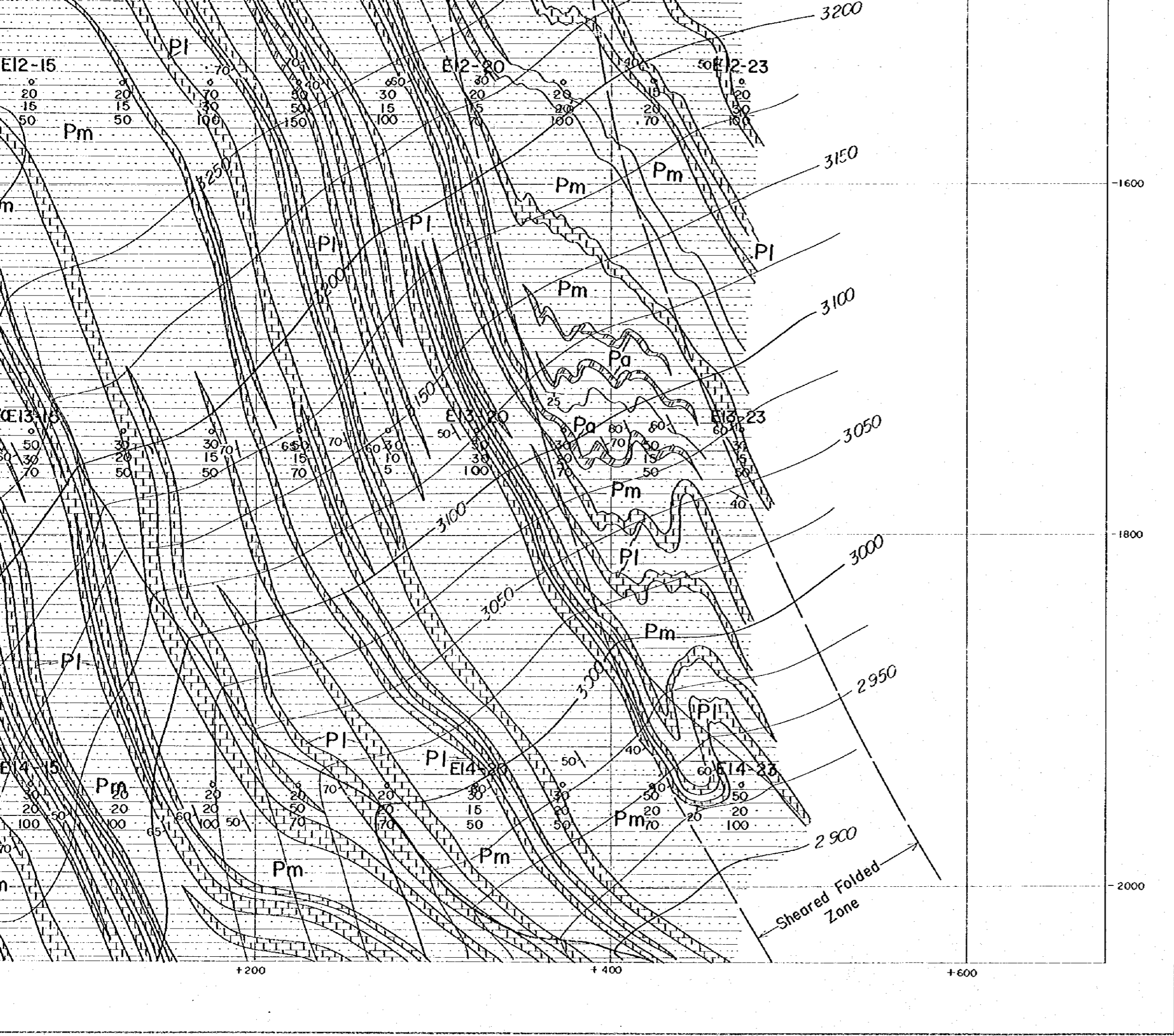


Scale 1 : 2,000



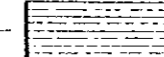
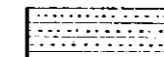
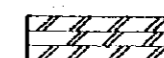
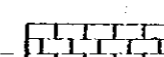
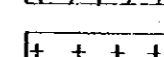
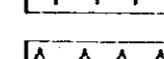
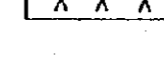


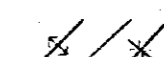





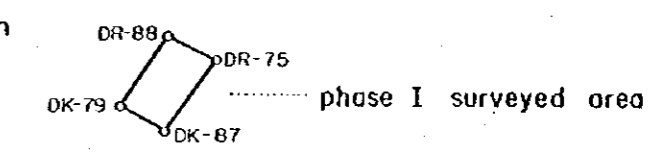


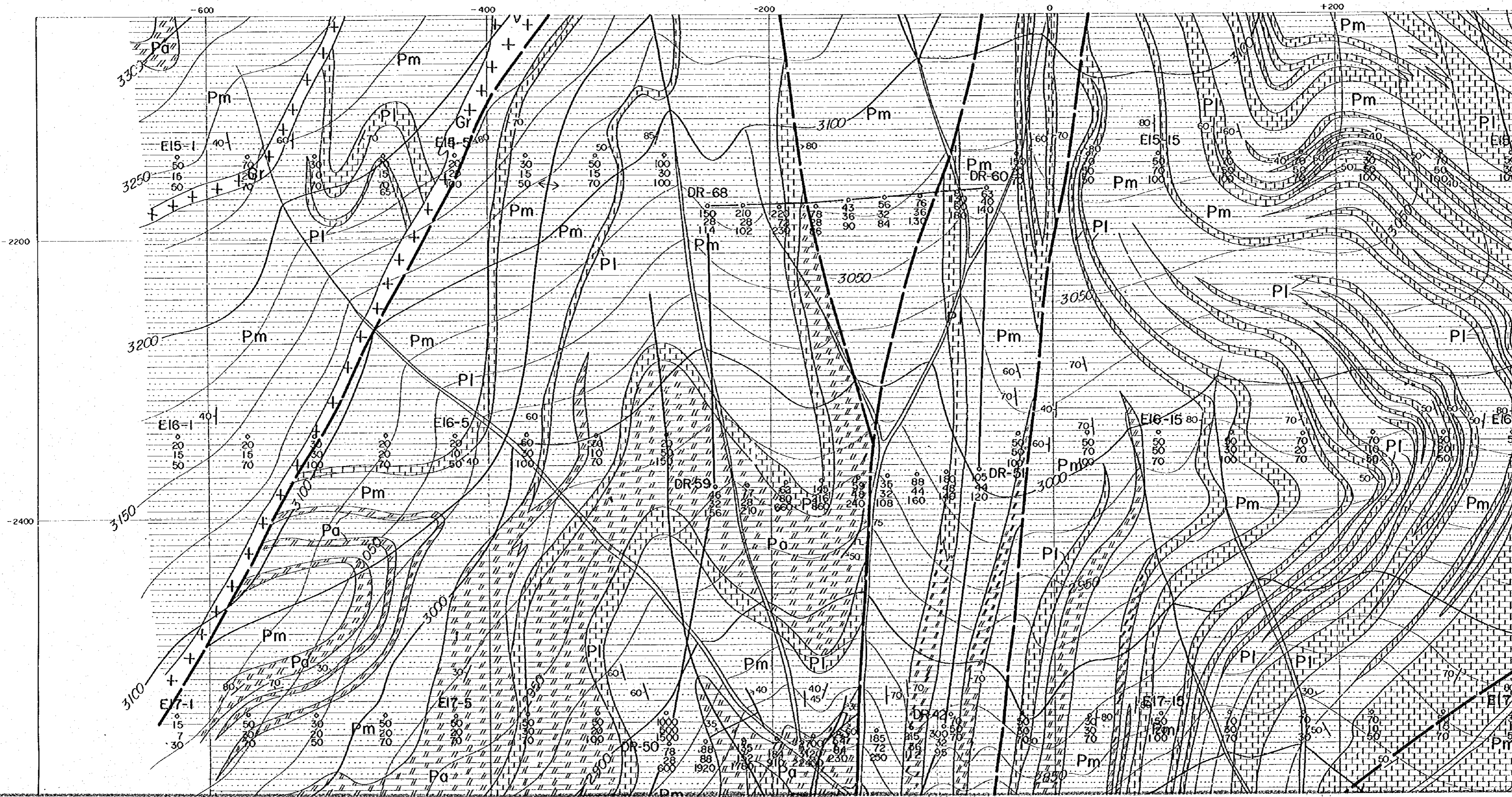
Scale 1 : 2,000

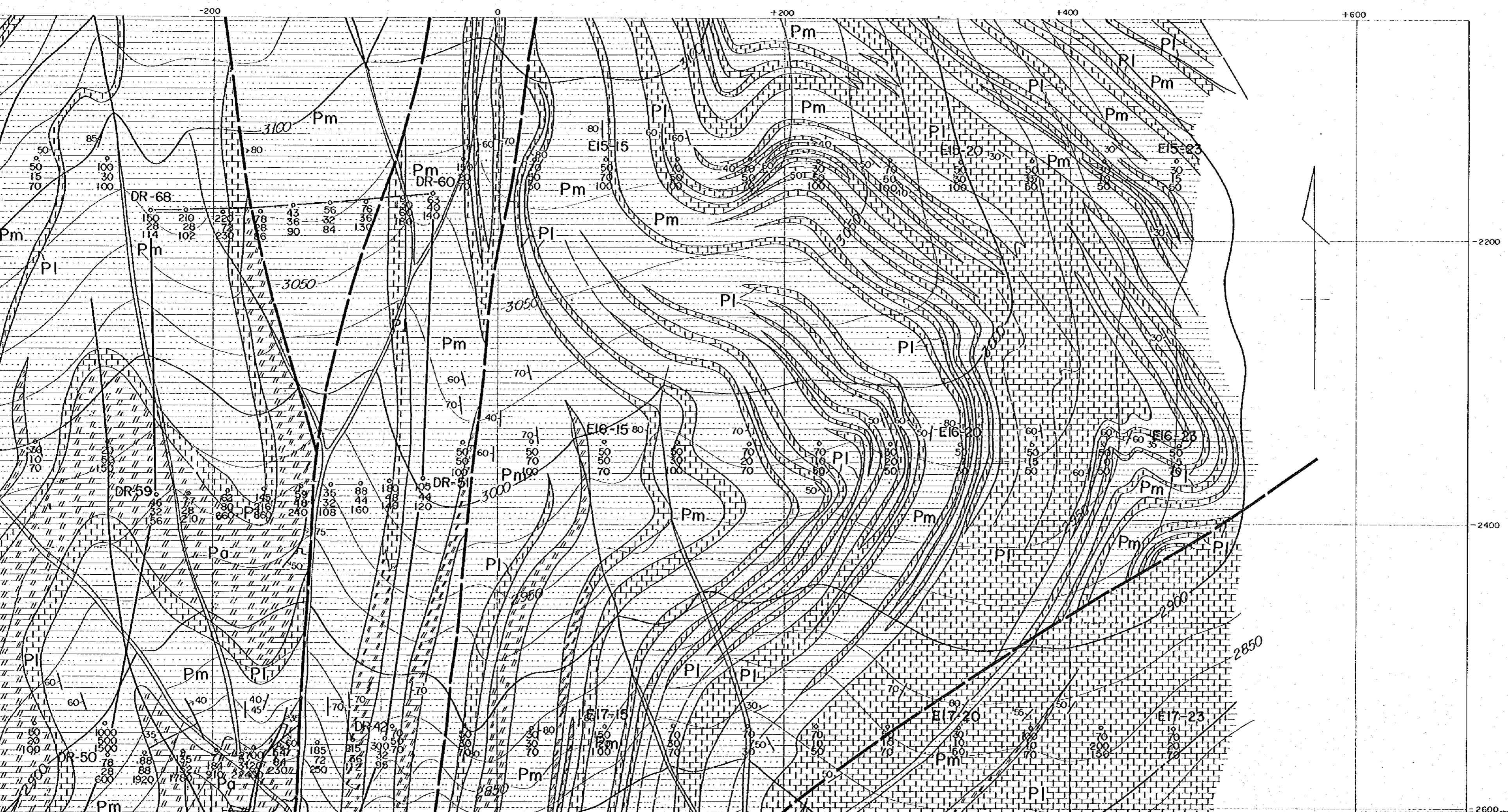
LEGEND

-  Pp pelitic schist
-  Pm psammitic schist
-  Pa calcareous schist
-  Pl limestone
-  Gr granite
-  Po porphyrite
-  vein
-  fault
-  anticlinal axis / synclinal axis
-  bedding plane

- E4-23
-  sample location
 - 20 Cu ppm
 - 50 Pb ppm
 - 100 Zn ppm







国際協力事業団

11637

図書資料室蔵書

PL.I-6 (4)

GEOLOGICAL SURVEY

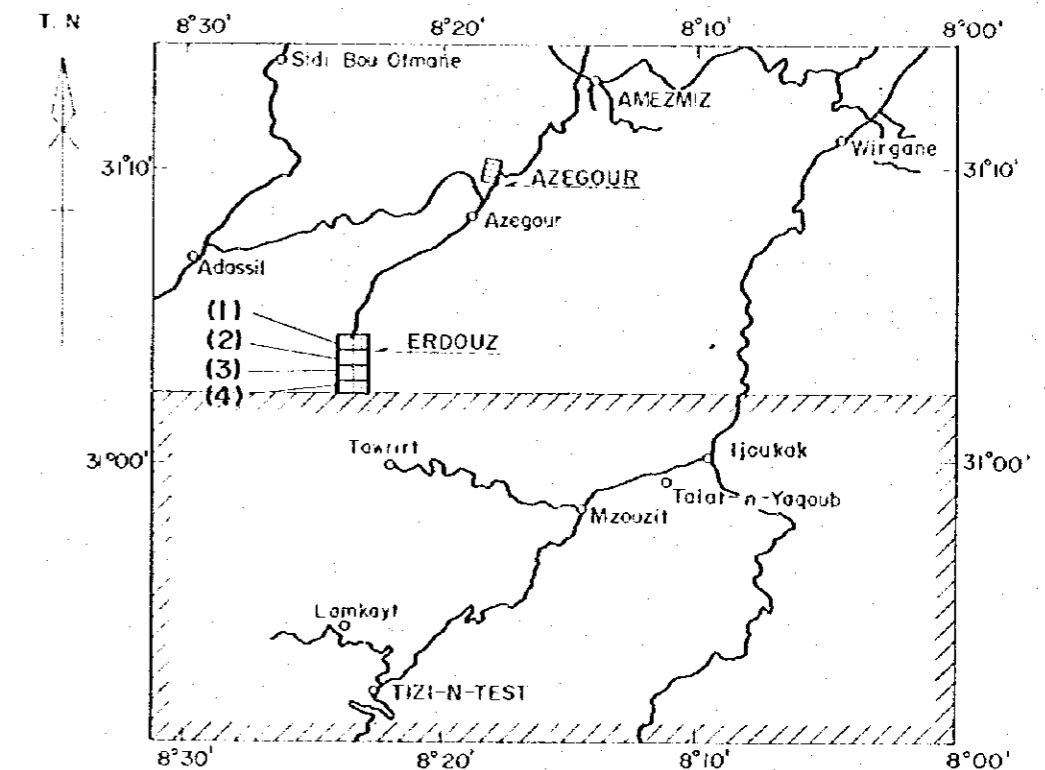
OF

HAUT ATLAS OCCIDENTAL AREA, MOROCCO

(PHASE II)

LOCATION MAP OF SOIL SAMPLES

IN ERDOUZ SECTOR

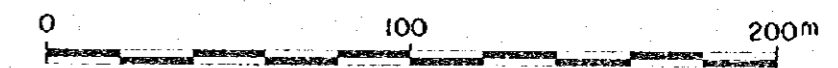


JAPAN INTERNATIONAL COOPERATION AGENCY

METAL MINING AGENCY OF JAPAN

FEBRUARY 1985

Prepared by MINDECO



Scale 1 : 2,000

