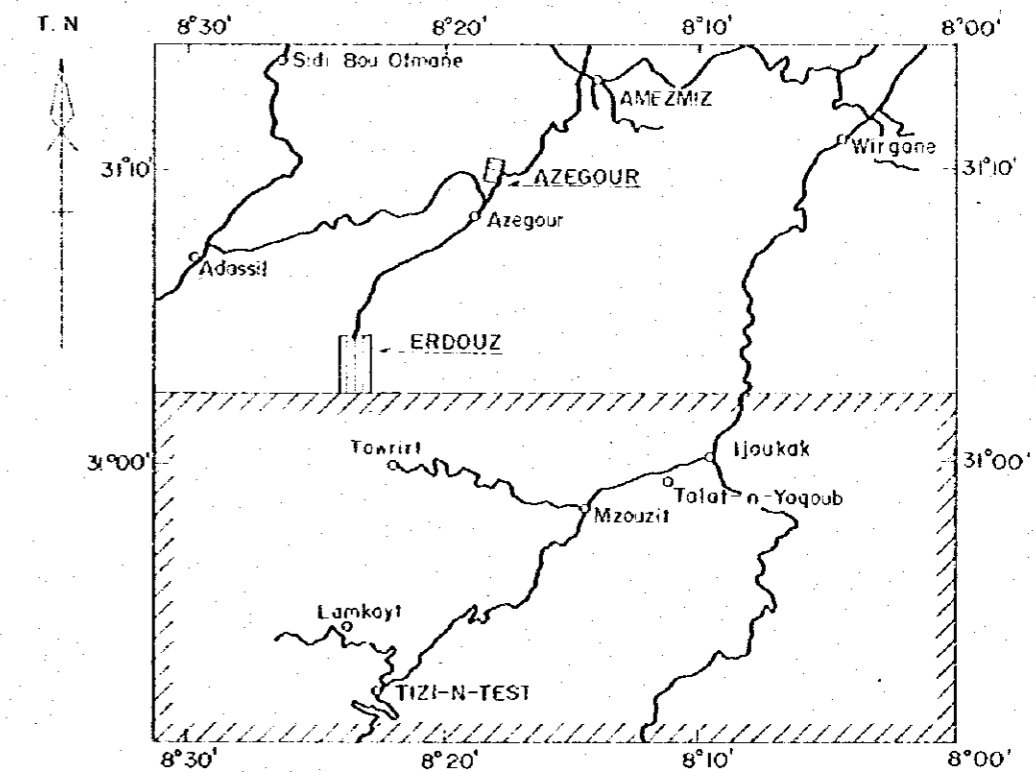
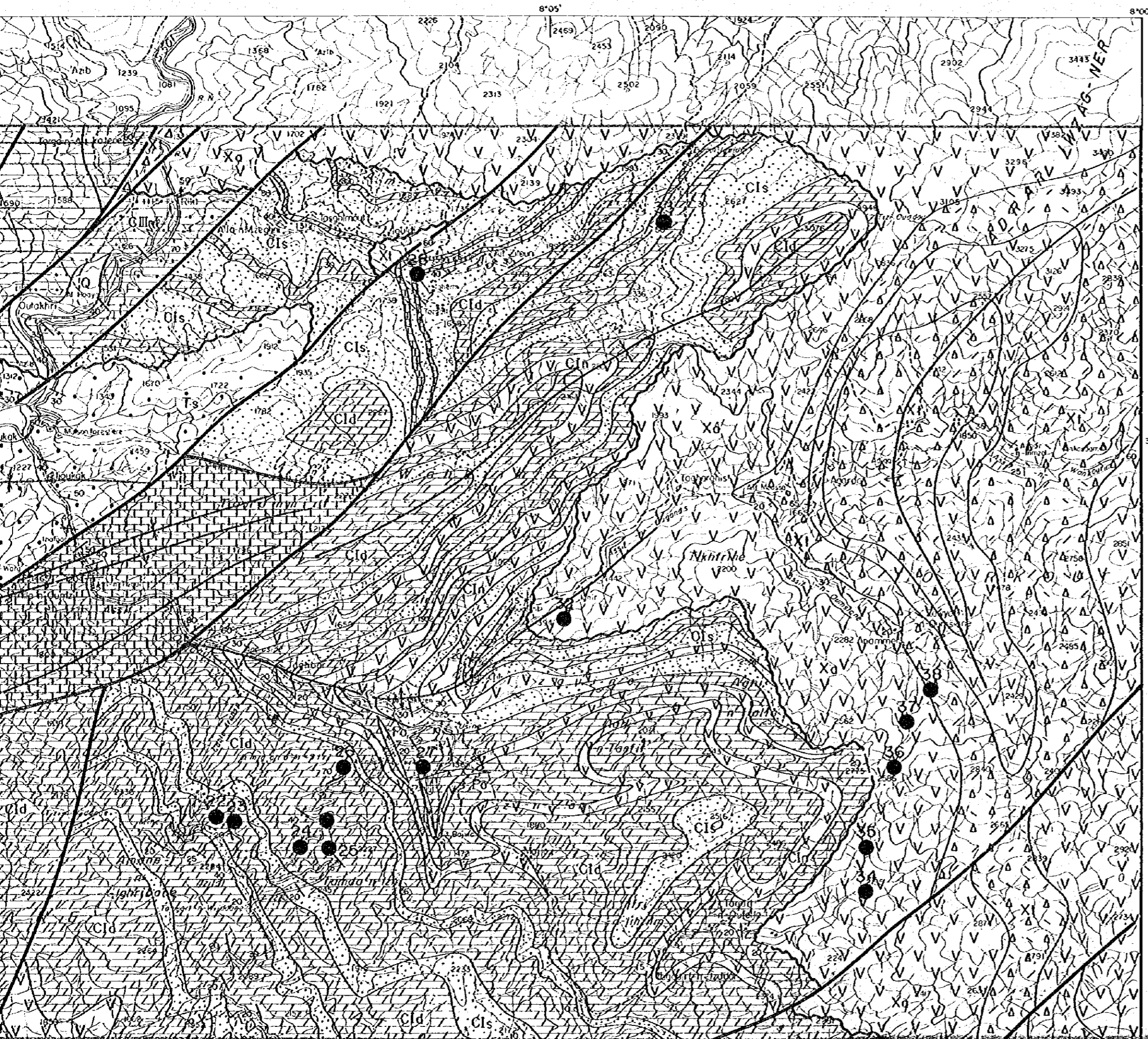


GEOLOGICAL SURVEY

OF

HAUT ATLAS OCCIDENTAL AREA, MOROCCO  
( PHASE II )

LOCATION MAP OF ORE DEPOSITS AND  
MINERAL INDICATIONS IN SOUTHERN AREA



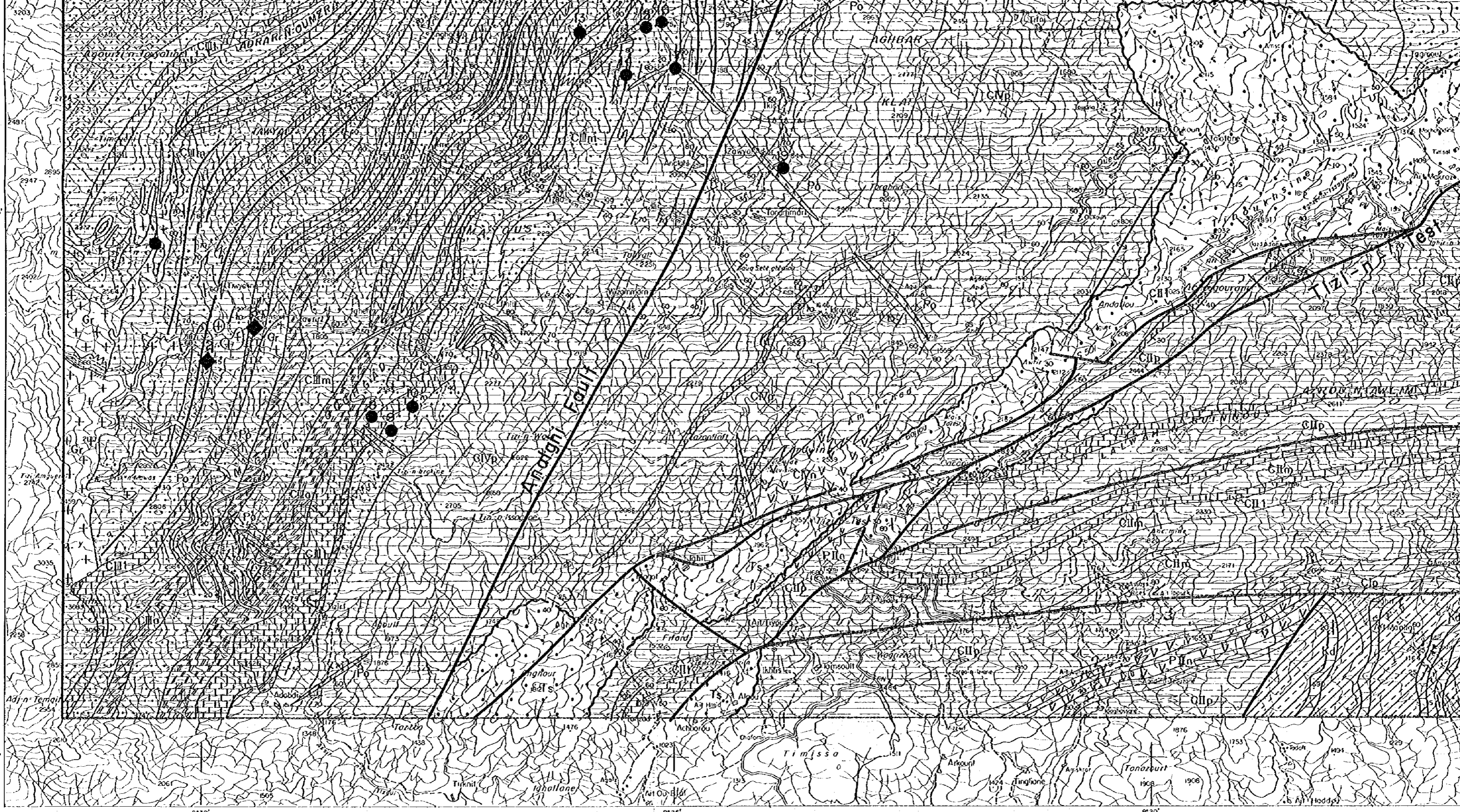
JAPAN INTERNATIONAL COOPERATION AGENCY  
 METAL MINING AGENCY OF JAPAN  
 FEBRUARY 1985  
 Prepared by MINDECO

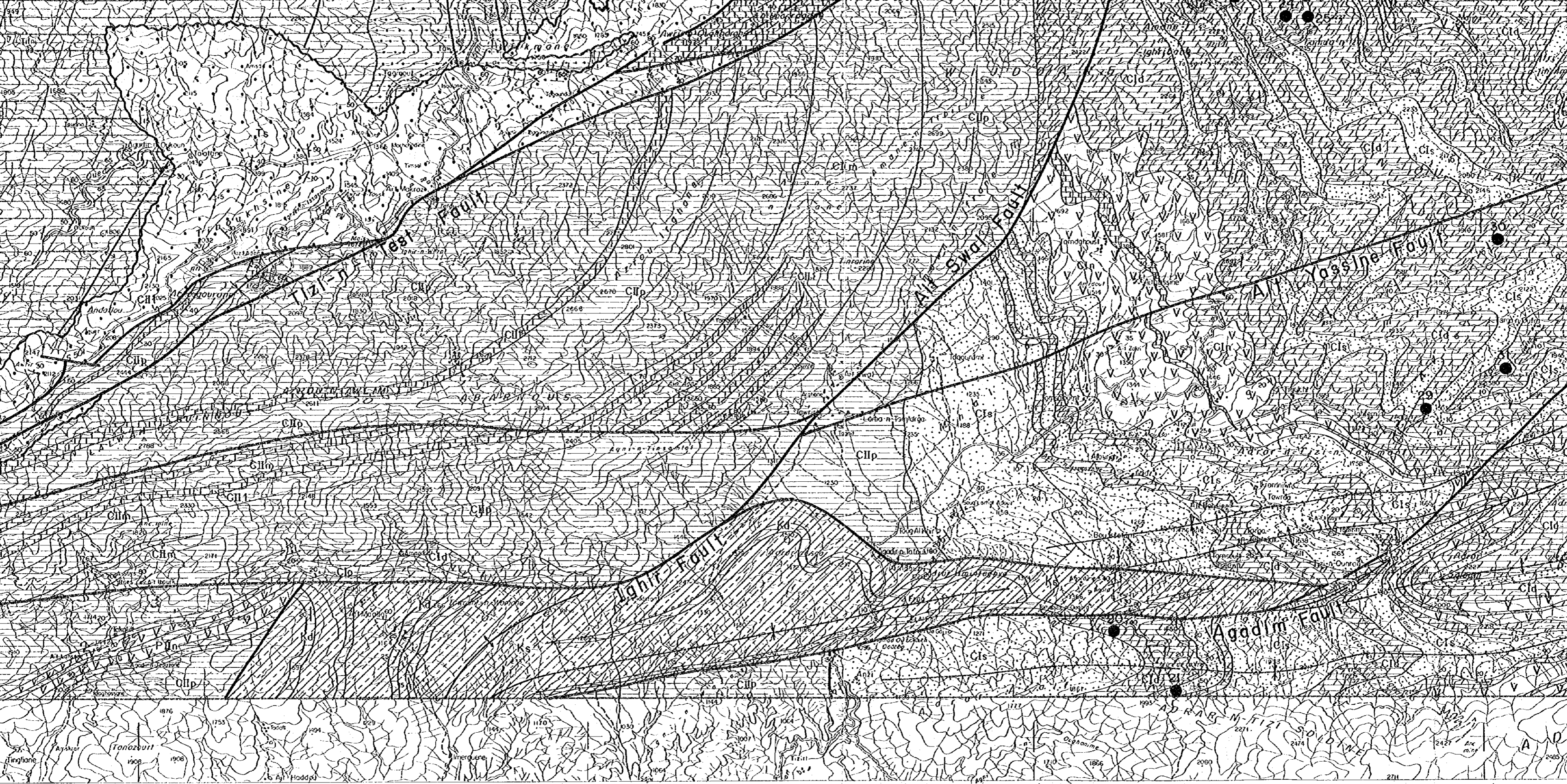


Scale 1 : 50,000

LEGEND

- Quaternary  Q gravel, sand, mud
- Kd dolomite



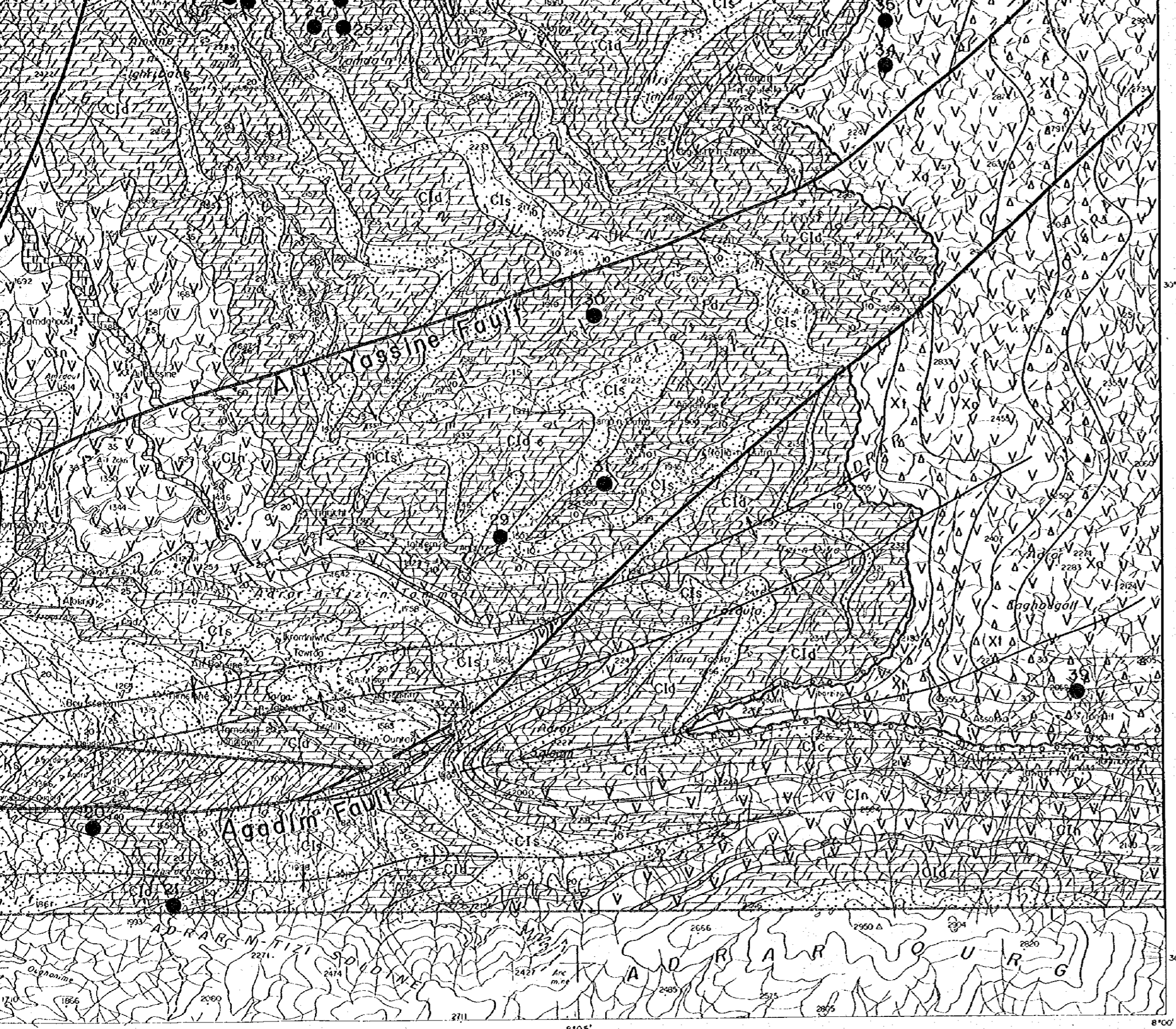


8°20'

8°15'

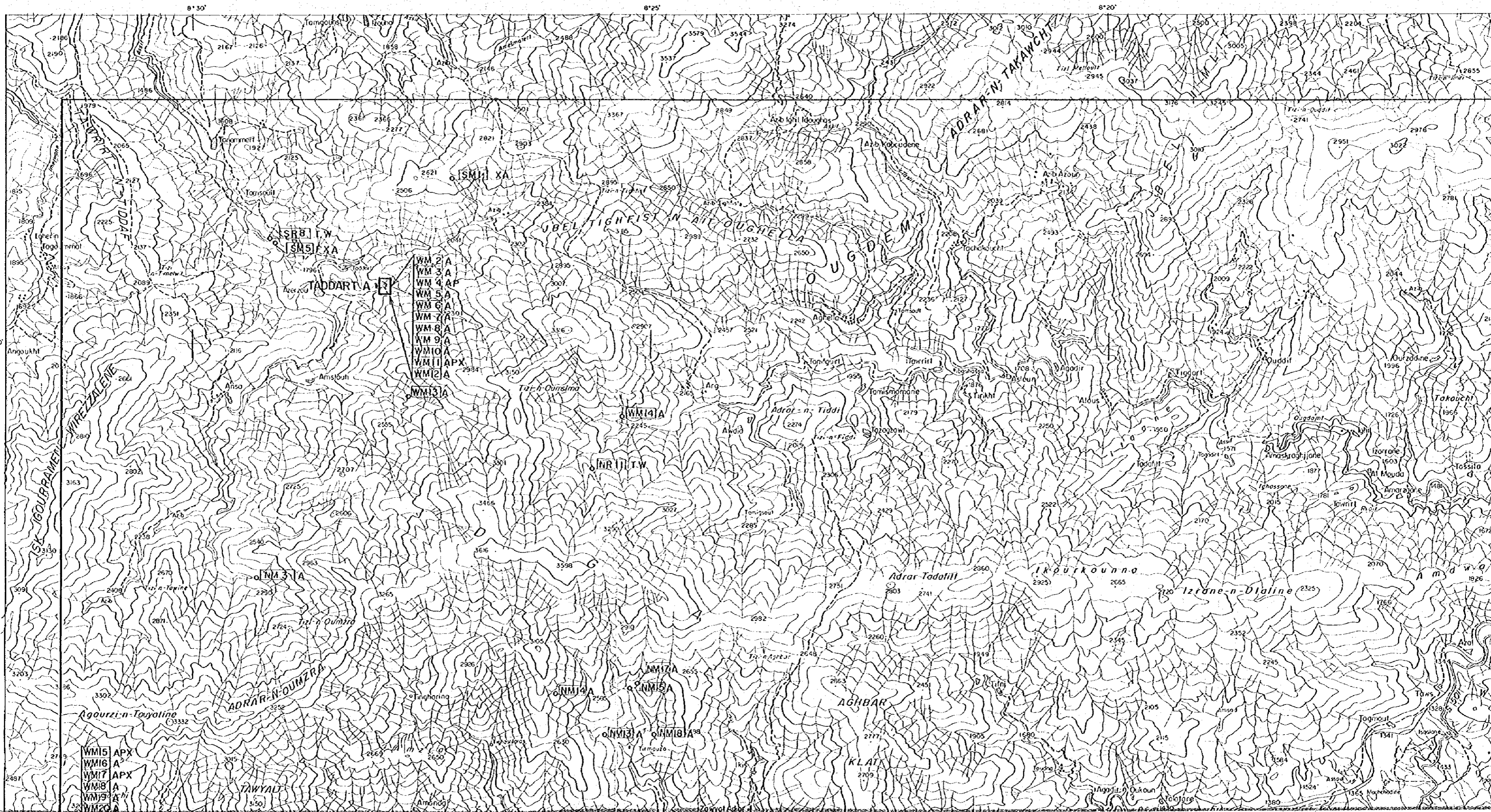
8°10'

8°05'



Scale 1 : 50,000  
 LEGEND

- Quaternary
  - Q gravel, sand, mud
- Cretaceous
  - Kd dolomite
  - Ks sandstone, siltstone, conglomerate
- Triassic
  - Ts sandstone, siltstone, conglomerate
- Ordovician & Cambrian
  - CIV Formation
    - CVp pelitic schist
    - CVl limestone
    - CVn andesite, tuff, tuff breccia
  - CIII Formation
    - CIIm psammitic schist
    - CIIp pelitic schist
    - CIIl limestone
    - CIIo calcareous schist
    - CIIn green schist (tuff, tuff breccia)
  - CI Formation
    - CIIm psammitic schist
    - CIIp pelitic schist
    - CIIl limestone
    - CIIn andesite, tuff, tuff breccia
    - CIs siltstone, sandstone
    - CIn andesite, tuff, tuff breccia
    - CII limestone
    - CId dolomite
    - Cic conglomerate
- Pre-Cambrian
  - Xa andesite
  - Xt tuff, lapilli tuff, tuff breccia
- Intrusive rock
  - Gr granite, granodiorite
  - Po porphyrite, microgranite
- fault
- unconformity
- anticlinal/synclinal axis /overturned fold
- stratigraphic boundary
- bedding plane
- 1 vein type mineralization
- 2 skarn type mineralization



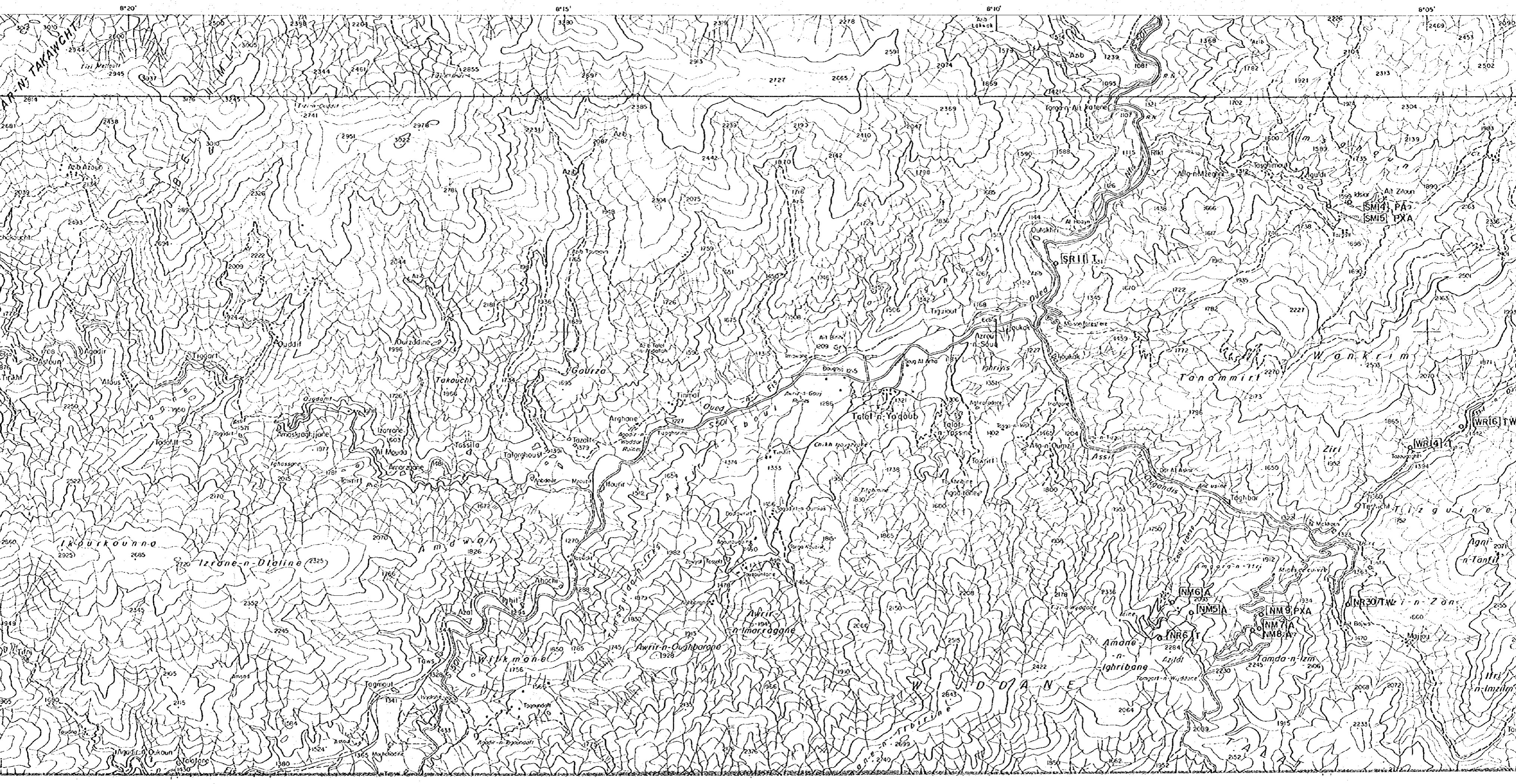
8°30'

8°25'

8°20'

31°00'

WM15	APX
WM16	A
WM17	APX
WM18	A
WM19	A
WM20	A





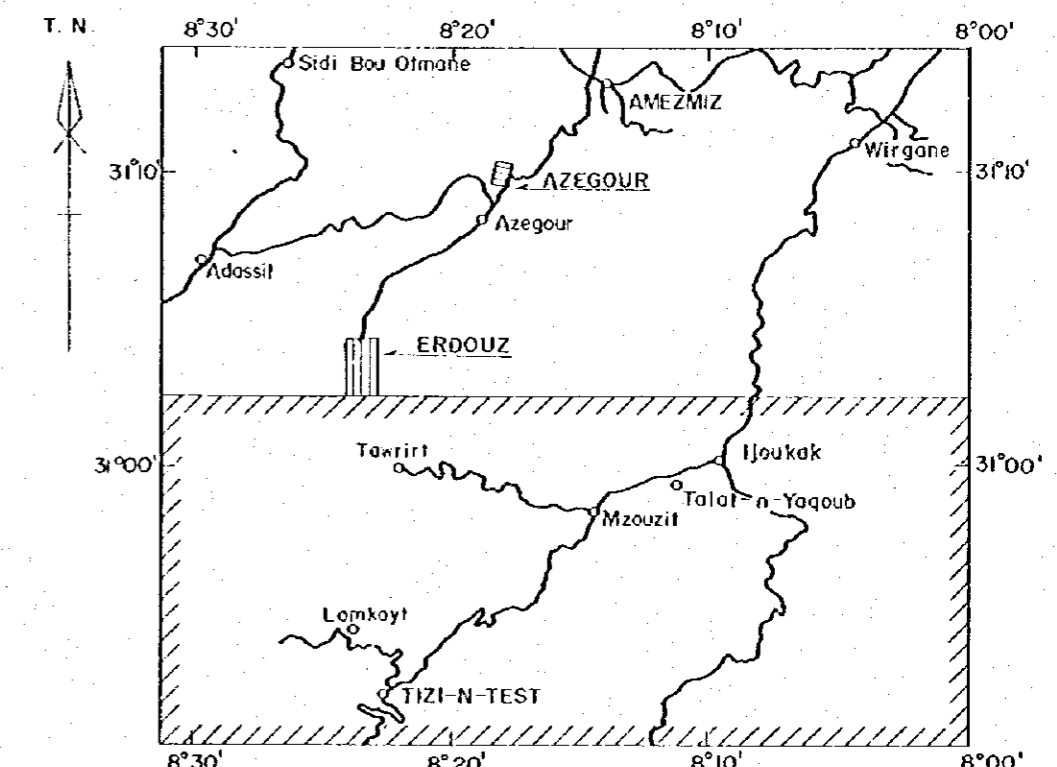
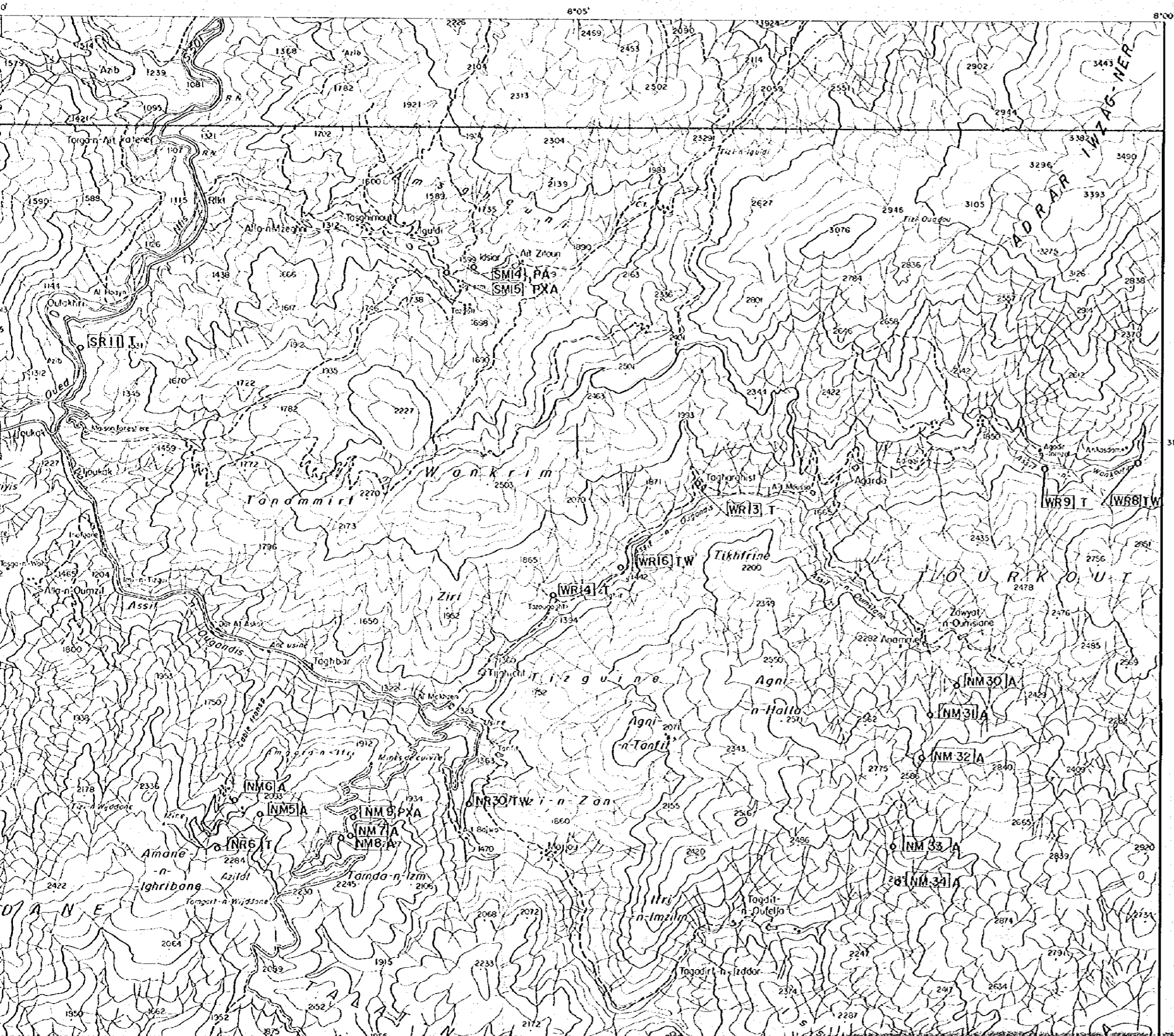
GEOLOGICAL SURVEY

OF

HAUT ATLAS OCCIDENTAL AREA, MOROCCO

( PHASE II )

LOCATION MAP OF ROCK AND ORE SAMPLES IN SOUTHERN AREA



JAPAN INTERNATIONAL COOPERATION AGENCY

METAL MINING AGENCY OF JAPAN

FEBRUARY 1985

Prepared by MINDECO



Scale 1 : 50,000