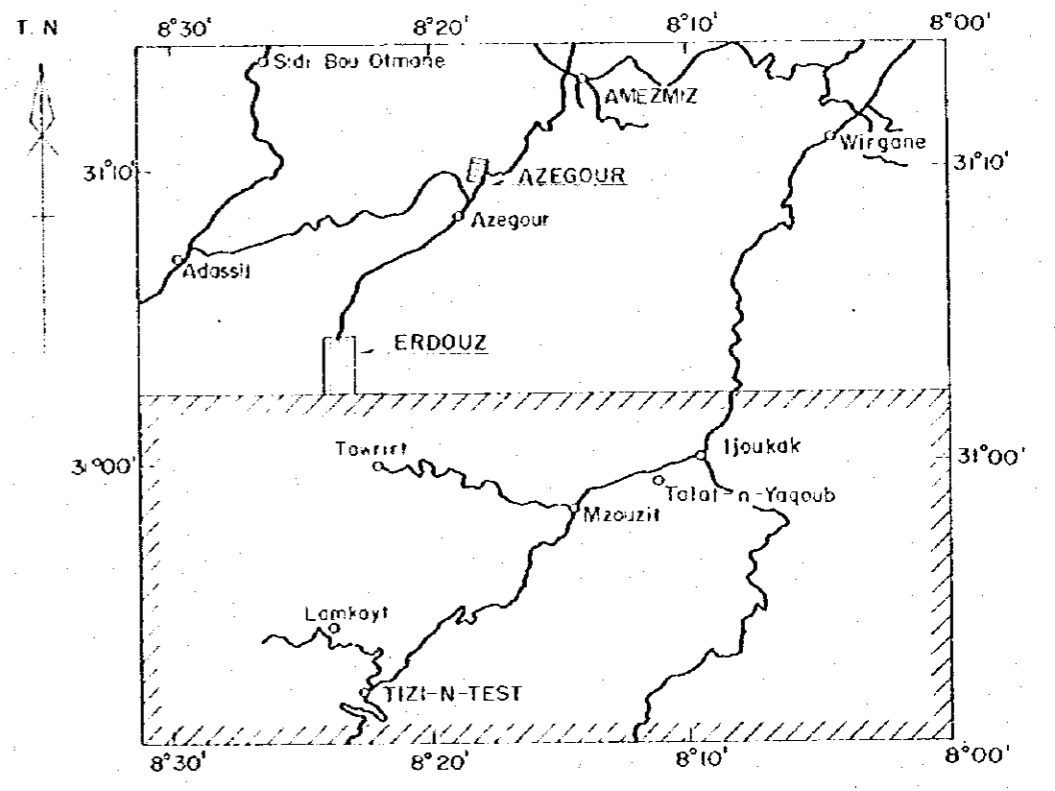


国際協力事業団
11637
図書資料室蔵書

PL. I - 3 - 1

GEOLOGICAL SURVEY
OF
HAUT ATLAS OCCIDENTAL AREA, MOROCCO
(PHASE II)
LOCATION MAP OF STREAM SEDIMENT
SAMPLES IN SOUTHERN AREA



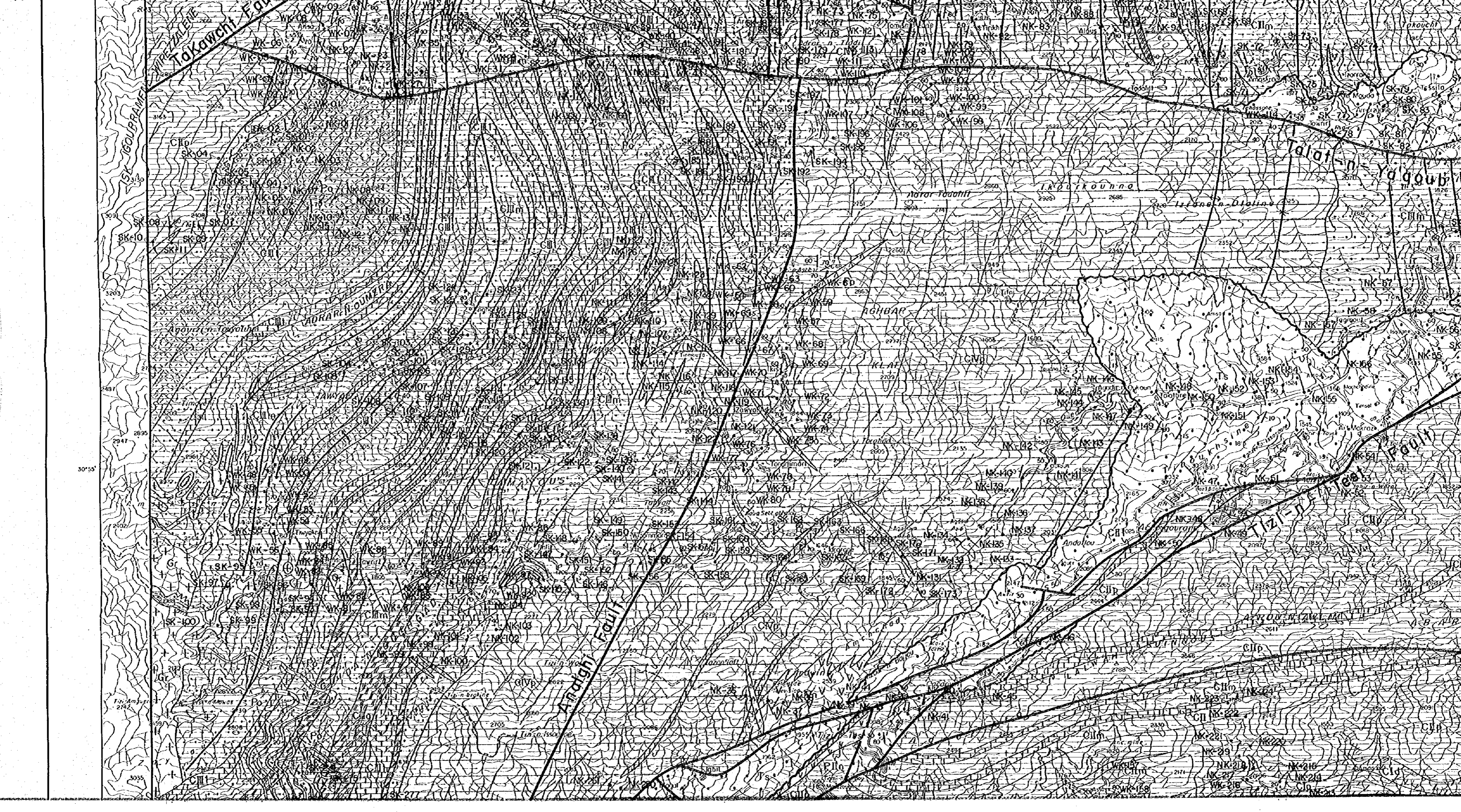
JAPAN INTERNATIONAL COOPERATION AGENCY
METAL MINING AGENCY OF JAPAN

FEBRUARY 1985

Prepared by MINDECO



Scale 1 : 50,000



Tolawchi Fault

Andighi Fault

Tala-n-Yo'goub

AORAR-BOUMETA

AGHBAR

Kous

SK-100

SK-99

SK-98

SK-97

SK-96

NK-09

NK-08

NK-07

NK-06

NK-05

NK-04

NK-03

NK-02

NK-01

NK-00

NK-99

NK-98

NK-97

NK-96

NK-95

NK-94

NK-93

NK-92

NK-91

NK-90

NK-89

NK-88

NK-87

NK-86

NK-85

NK-84

NK-83

NK-82

NK-81

NK-80

NK-79

NK-78

NK-77

NK-76

NK-75

NK-74

NK-73

NK-72

NK-71

NK-70

NK-69

NK-68

NK-67

NK-66

NK-65

NK-64

NK-63

NK-62

NK-61

NK-60

NK-59

NK-58

NK-57

NK-56

NK-55

NK-54

NK-53

NK-52

NK-51

NK-50

NK-49

NK-48

NK-47

NK-46

NK-45

NK-44

NK-43

NK-42

NK-41

NK-40

NK-39

NK-38

NK-37

NK-36

NK-35

NK-34

NK-33

NK-32

NK-31

NK-30

NK-29

NK-28

NK-27

NK-26

NK-25

NK-24

NK-23

NK-22

NK-21

NK-20

NK-19

NK-18

NK-17

NK-16

NK-15

NK-14

NK-13

NK-12

NK-11

NK-10

NK-09

NK-08

NK-07

NK-06

NK-05

NK-04

NK-03

NK-02

NK-01

NK-00

NK-99

NK-98

NK-97

NK-96

NK-95

NK-94

NK-93

NK-92

NK-91

NK-90

NK-89

NK-88

NK-87

NK-86

NK-85

NK-84

NK-83

NK-82

NK-81

NK-80

NK-79

NK-78

NK-77

NK-76

NK-75

NK-74

NK-73

NK-72

NK-71

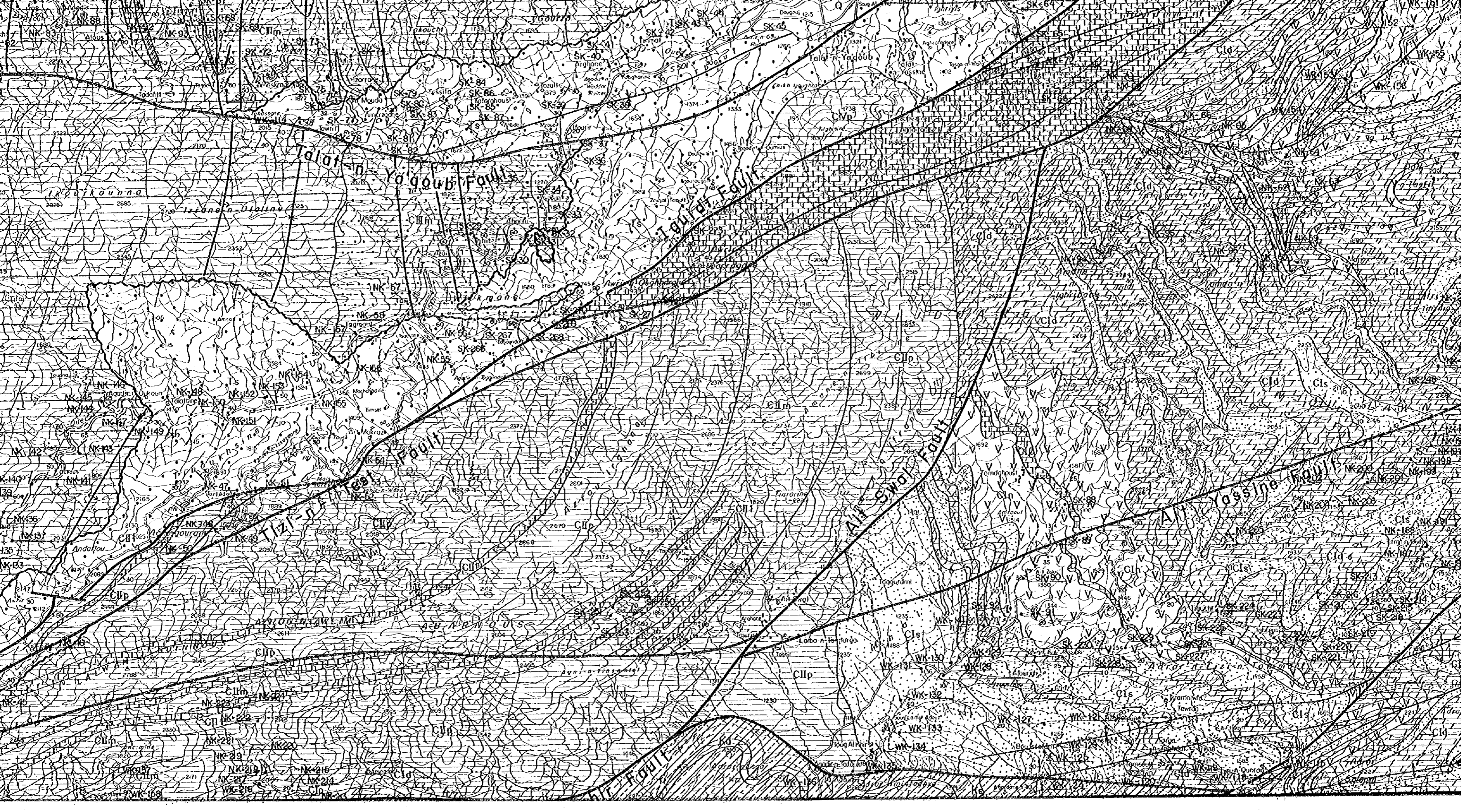
NK-70

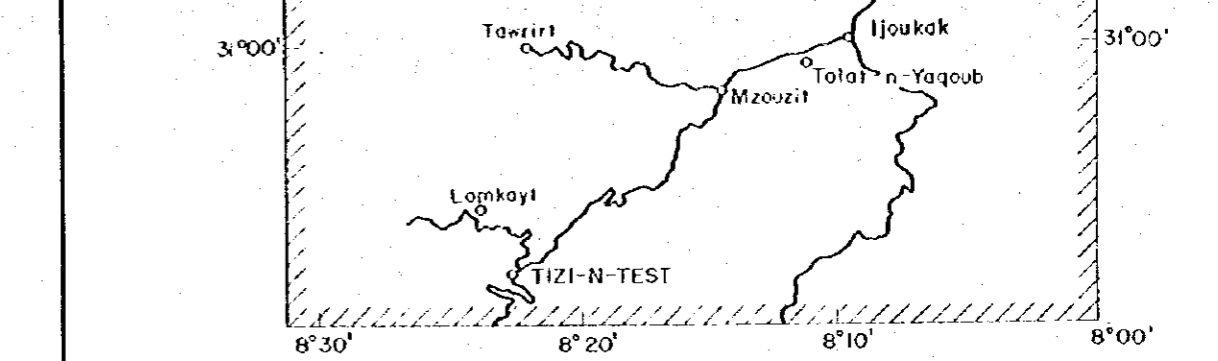
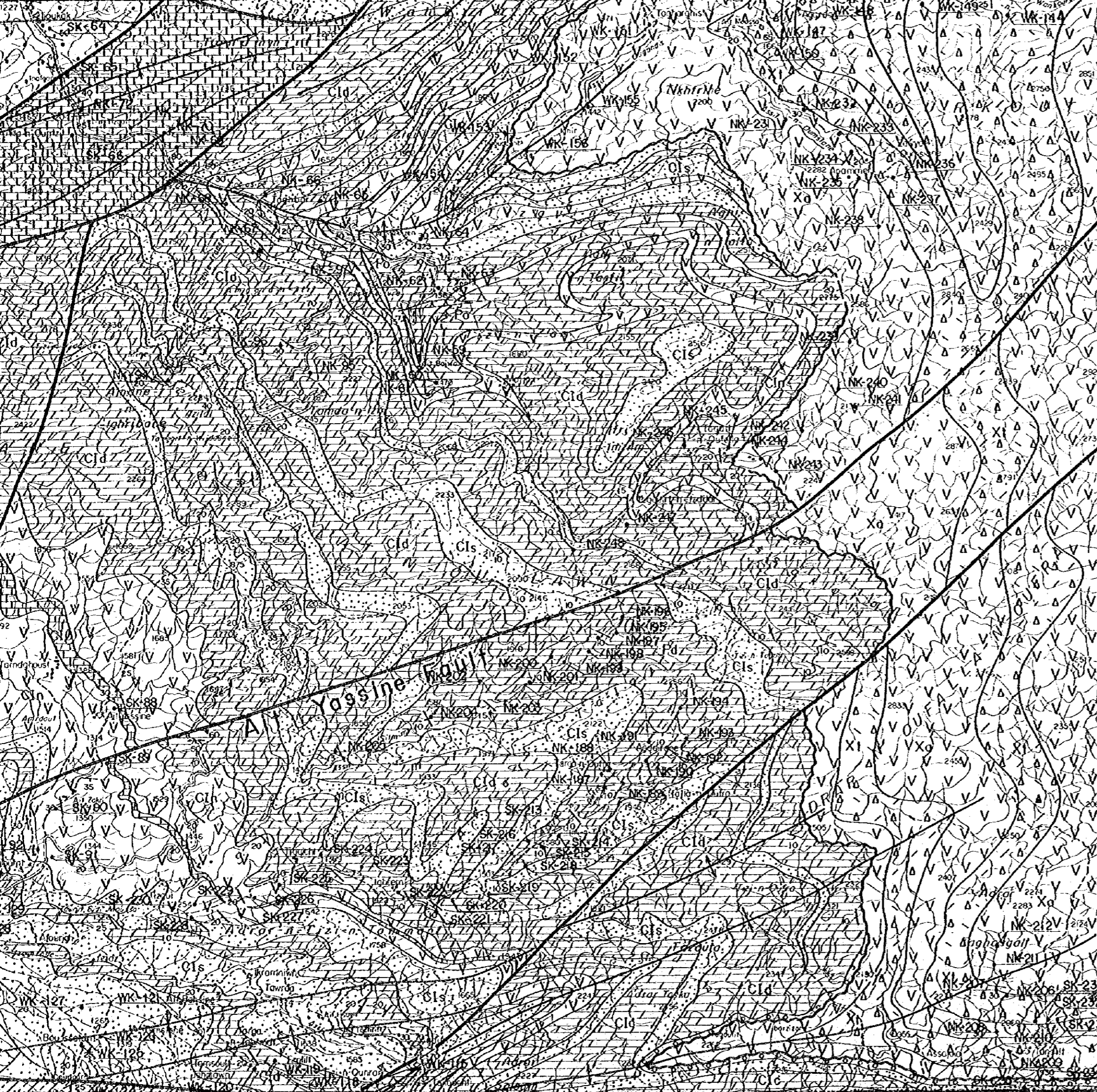
NK-69

NK-68

NK-67

NK-66



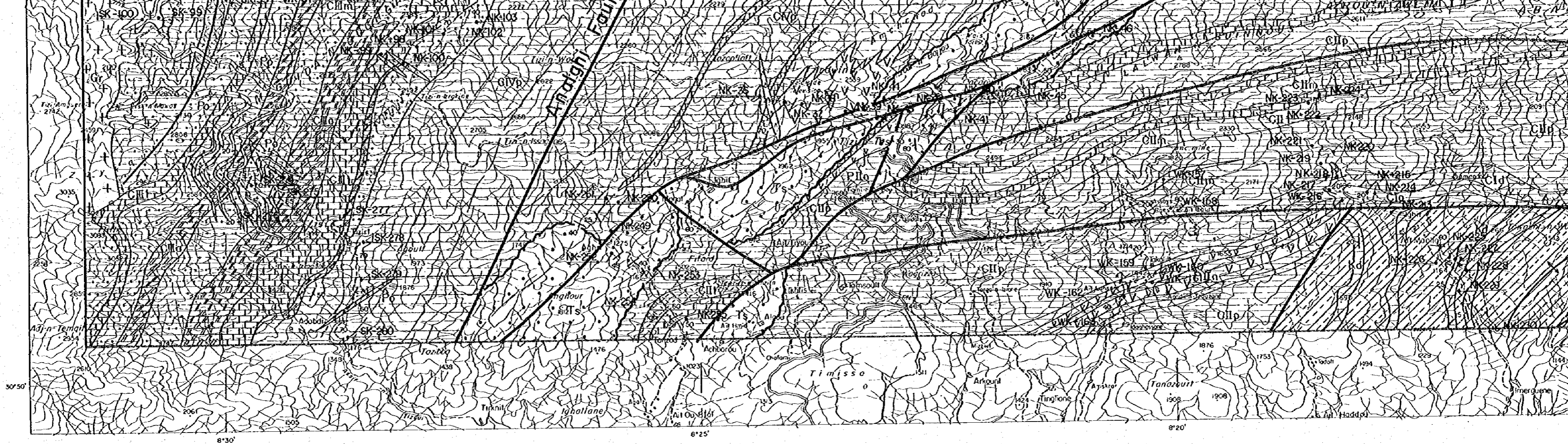


JAPAN INTERNATIONAL COOPERATION AGENCY
 METAL MINING AGENCY OF JAPAN
 FEBRUARY 1985
 Prepared by MINDECO



Scale 1 : 50,000
 LEGEND

Quaternary	Q	gravel, sand, mud
Cretaceous	Kd	dolomite
	Ks	sandstone, siltstone, conglomerate
Triassic	Ts	sandstone, siltstone, conglomerate
CIV Formation	CIVp	peritic schist
	CIVl	limestone
	CIVn	andesite, tuff, tuff breccia
CIII Formation	CIIIp	psammitic schist
	CIIIp	pelitic schist
	CIIIl	limestone
	CIIIa	calcareous schist
CII Formation	CIIb	green schist (tuff, tuff breccia)
	CIIp	psammitic schist
	CIIp	pelitic schist
CI Formation	CIIl	limestone
	CIn	andesite, tuff, tuff breccia
	CIc	siltstone, sandstone
Pre-Cambrian	CIn	andesite, tuff, tuff breccia
	CIl	limestone
	CId	dolomite
	CIc	conglomerate
	Xa	andesite

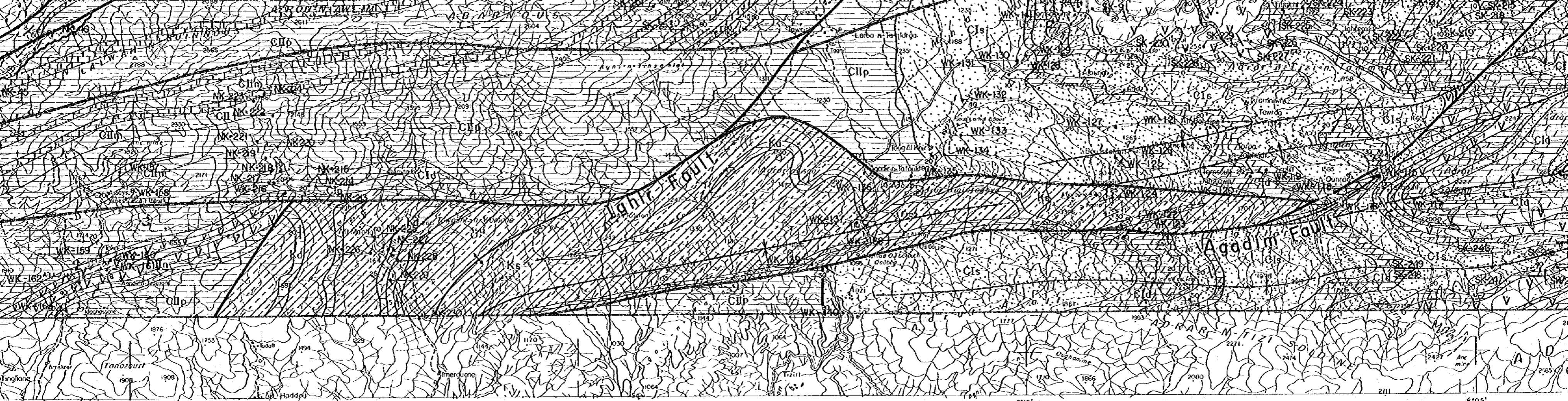


Results of Cu, Pb, Zn, Mo and W Geochemical Analysis
of Stream Sediment Samples in Southern Area

No.	Sample No.	Grade (ppm)					No.	Sample No.	Grade (ppm)				
		Cu	Pb	Zn	Mo	W			Cu	Pb	Zn	Mo	W
1	WK. 1	10	10	70	3	< 50	31	KK. 31	50	10	50	1	< 50
2	2	10	10	70	1	< 50	32	32	20	10	30	1	< 50
3	3	15	15	70	1	< 50	33	33	30	15	50	1	< 50
4	4	20	7	50	< 1	< 50	34	34	30	10	30	1	< 50
5	5	15	5	30	< 1	< 50	35	35	30	10	50	1	< 50
6	6	15	10	50	< 1	< 50	36	36	30	10	20	1	< 50
7	7	15	15	100	1	< 50	37	37	50	10	50	1	< 50
8	8	15	15	100	< 1	< 50	38	38	70	15	70	1	< 50
9	9	15	15	70	< 1	< 50	39	39	20	10	50	< 1	< 50
10	10	15	15	70	< 1	< 50	40	40	50	30	100	< 1	< 50
11	11	15	10	70	< 1	< 50	41	41	20	30	100	1	< 50
12	12	10	7	50	< 1	< 50	42	42	30	20	70	< 1	< 50
13	13	15	10	70	< 1	< 50	43	43	50	15	70	< 1	< 50
14	14	15	10	70	1	< 50	44	44	50	15	50	1	< 50
15	15	10	7	70	< 1	< 50	45	45	70	15	50	< 1	< 50
16	16	10	10	70	< 1	< 50	46	46	30	10	30	< 1	< 50
17	17	10	10	70	< 1	< 50	47	47	30	7	30	< 1	< 50
18	18	15	15	70	1	< 50	48	48	50	50	100	150	100
19	19	15	15	70	2	< 50	49	49	70	70	150	5	< 50
20	20	30	15	50	2	< 50	50	50	100	15	70	2	< 50
21	21	30	15	50	1	< 50	51	51	30	15	50	5	< 50
22	22	20	10	30	2	< 50	52	52	50	15	70	1	70
23	23	70	15	30	1	< 50	53	53	30	10	50	2	< 50
24	24	50	20	50	< 1	< 50	54	54	20	15	50	3	< 50
25	25	50	30	30	1	< 50	55	55	20	10	50	2	< 50
26	26	20	10	50	< 1	< 50	56	56	30	20	70	5	< 50

No.	Sample No.	Grade (ppm)					No.	Sample No.	Grade (ppm)				
		Cu	Pb	Zn	Mo	W			Cu	Pb	Zn	Mo	W
129	WK. 123	50	50	100	< 1	< 50	163	WK. 163	150	100	200	7	< 50
130	130	20	15	70	< 1	< 50	164	SK. 1	30	15	70	< 1	< 50
131	131	20	30	100	< 1	< 50	165	2	20	7	20	< 1	< 50
132	132	20	30	70	< 1	< 50	166	3	30	10	50	5	< 50
133	133	300	50	70	1	< 50	167	4	20	10	50	3	< 50
134	134	30	15	50	< 1	< 50	168	5	30	15	100	1	< 50
135	135	20	15	50	< 1	< 50	169	6	15	20	100	5	< 50
136	136	20	20	50	< 1	< 50	170	7	20	50	200	1	< 50
137	137	15	10	30	1	< 50	171	8	10	10	30	< 1	< 50
138	138	15	10	50	< 1	< 50	172	9	50	70	150	7	< 50
139	139	15	15	50	< 1	< 50	173	10	15	50	100	< 1	< 50
140	140	20	10	50	< 1	< 50	174	11	15	30	100	1	< 50
141	141	15	20	30	< 1	< 50	175	12	30	30	100	2	< 50
142	142	50	50	70	3	< 50	176	13	30	10	30	< 1	< 50
143	143	50	50	70	5	< 50	177	14	30	20	70	2	< 50
144	144	30	20	30	2	< 50	178	15	50	10	30	2	< 50
145	145	50	30	70	3	< 50	179	16	20	10	30	2	< 50
146	146	30	20	70	3	< 50	180	17	30	10	30	< 1	< 50
147	147	70	20	70	3	< 50	181	18	50	15	70	5	< 50
148	148	30	20	70	1	< 50	182	19	20	10	30	< 1	< 50
149	149	20	15	50	< 1	< 50	183	20	30	10	30	1	< 50
150	150	20	10	30	3	< 50	184	21	30	15	50	< 1	< 50
151	151	30	30	70	< 1	< 50	185	22	50	20	70	2	< 50
152	152	30	20	70	< 1	< 50	186	23	20	10	50	1	< 50
153	153	20	10	30	< 1	< 50	187	24	30	10	50	3	< 50
154	154	20	10	20	< 1	< 50	188	25	20	10	50	< 1	< 50
155	155	30	15	20	2	< 50	189	26	10	7	30	< 1	< 50
156	156	50	50	50	3	< 50	190	27	20	10	50	2	< 50
157	157	100	70	70	1	< 50	191	28	15	15	70	3	< 50
158	158	30	70	200	5	< 50	192	29	15	10	30	1	< 50

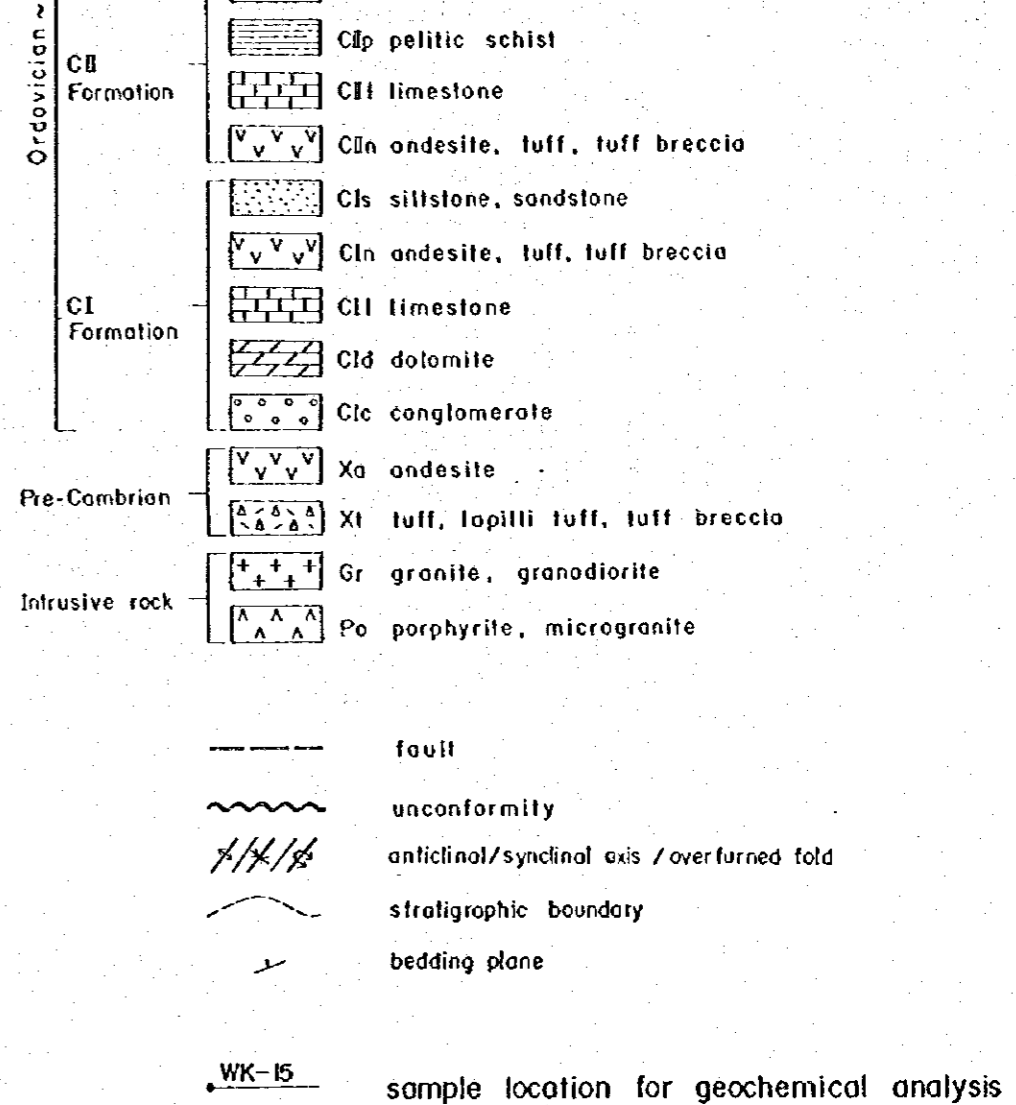
No.	Sample No.	Grade (ppm)					No.	Sample No.	Grade (ppm)				
		Cu	Pb	Zn	Mo	W			Cu	Pb	Zn	Mo	W
265	SK. 102	15	10	50	< 1	< 50	299	SK. 136	20	15	50	< 1	< 50
266	103	10	7	30	< 1	< 50	300	137	20	10	30	< 1	< 50
267	104	10	10	50	1	< 50	301	138	20	15	30	< 1	< 50
268	105	30	10	70	< 1	< 50	302	139	15	10	30	< 1	< 50
269	106	30	50	70	2	< 50	303	140	15	10	30	< 1	< 50
270	107	15	10	50	1	< 50	304	141	20	15	50	< 1	< 50
271	108	30	15	70	1	< 50	305	142	15	10	30	< 1	< 50
272	109	50	10	70	5	< 50	306	143	15	15	50	< 1	< 50
273	110	20	10	50	2	< 50	307	144	20	15	30	< 1	< 50
274	111	10	10	30	1	< 50	308	145	15	15	50	< 1	< 50
275	112	30	10	50	5	< 50	309	146	10	7	50	< 1	< 50
276	113	30	7	50	< 1	< 50	310	147	15	15	50	< 1	< 50
277	114	20	70	50	< 1	< 50	311	148	10	10	30	< 1	< 50
278	115	15	10	50	< 1	< 50	312	149	10	10	50	< 1	< 50
279	116	30	20	50	1	< 50	313	150	10	20	30	< 1	< 50
280	117	20	15	50	1	< 50	314	151	10	20	70	< 1	< 50
281	118	15	15	50	< 1	< 50	315	152	15	10	50	< 1	< 50
282	119	20	20	70	2	< 50	316	153	10	20	70	< 1	< 50
283	120	15	30	70	3	< 50	317	154	10	10	50	< 1	< 50
284	121	50	200	150	2	< 50	318	155	15	15	50	< 1	< 50
285	122	10	10	30	< 1	< 50	319	156	15	10	50	< 1	< 50
286	123	15	15	50	< 1	< 50	320	157	10	10	30	< 1	< 50
287	124	30	10	30	< 1	< 50	321	158	20	15	70	< 1	< 50
288	125	50	10	50	< 1	< 50	322	159	10	15	70	< 1	< 50
289	126	50	15	70	< 1	< 50	323	160	10	10	50	< 1	< 50
290	127	50	15	150	< 1	< 50	324	161	10	10	50	1	< 50
291	128	70	20	100	< 1	< 50	325	162	10	10	50	1	< 50
292	129	70	20	100	< 1	< 50	326	163	15	15	100	< 1	< 50
293	130	50	30	70	< 1	< 50	327	164	10	15	100	< 1	< 50
294	131	20	10	30	1	< 50	328	165	15	15	100	< 1	< 50



No.	Sample No.	Grade (ppm)					No.	Sample No.	Grade (ppm)				
		Cu	Pb	Zn	Mo	W			Cu	Pb	Zn	Mo	W
265	SK.102	15	10	50	< 1	< 50	299	SK.136	20	15	50	< 1	< 50
266	103	10	7	30	< 1	< 50	300	137	20	10	30	< 1	< 50
267	104	10	10	50	1	< 50	301	138	20	15	30	< 1	< 50
268	105	30	10	70	< 1	< 50	302	139	15	10	30	< 1	< 50
269	106	30	50	70	2	< 50	303	140	15	10	30	< 1	< 50
270	107	15	10	50	1	< 50	304	141	20	15	50	< 1	< 50
271	108	30	15	70	1	< 50	305	142	15	10	30	< 1	< 50
272	109	50	10	70	5	< 50	306	143	15	15	50	< 1	< 50
273	110	20	10	50	2	< 50	307	144	20	15	30	< 1	< 50
274	111	10	10	30	1	< 50	308	145	15	15	50	< 1	< 50
275	112	30	10	50	5	< 50	309	146	10	7	50	< 1	< 50
276	113	30	7	50	< 1	< 50	310	147	15	15	50	< 1	< 50
277	114	20	70	50	< 1	< 50	311	148	10	10	30	< 1	< 50
278	115	15	10	50	< 1	< 50	312	149	10	10	50	< 1	< 50
279	116	30	20	50	1	< 50	313	150	10	20	30	< 1	< 50
280	117	30	15	50	1	< 50	314	151	10	20	70	< 1	< 50
281	118	15	15	50	< 1	< 50	315	152	15	10	30	< 1	< 50
282	119	20	20	70	2	< 50	316	153	10	20	70	< 1	< 50
283	120	15	30	70	3	< 50	317	154	10	10	50	< 1	< 50
284	121	50	200	150	2	< 50	318	155	15	15	50	< 1	< 50
285	122	10	10	30	< 1	< 50	319	156	15	10	50	< 1	< 50
286	123	15	15	50	< 1	< 50	320	157	10	10	30	< 1	< 50
287	124	30	10	30	< 1	< 50	321	158	20	15	70	< 1	< 50
288	125	50	10	50	< 1	< 50	322	159	10	15	70	< 1	< 50
289	126	50	15	70	< 1	< 50	323	160	10	10	50	< 1	< 50
290	127	50	15	150	< 1	< 50	324	161	10	10	50	1	< 50
291	128	70	20	100	< 1	< 50	325	162	10	10	50	< 1	< 50
292	129	70	20	100	< 1	< 50	326	163	15	15	100	< 1	< 50
293	130	50	30	70	< 1	< 50	327	164	10	15	100	< 1	< 50
294	131	20	10	30	1	< 50	328	165	15	15	100	< 1	< 50

No.	Sample No.	Grade (ppm)					No.	Sample No.	Grade (ppm)				
		Cu	Pb	Zn	Mo	W			Cu	Pb	Zn	Mo	W
401	SK.238	20	15	30	3	< 50	435	SK.272	15	7	50	5	< 50
402	239	15	15	50	2	< 50	436	273	10	7	50	< 1	< 50
403	240	15	20	30	1	< 50	437	274	20	300	200	< 1	< 50
404	241	15	10	15	1	< 50	438	275	15	30	50	< 1	< 50
405	242	10	10	20	< 1	< 50	439	276	15	50	50	2	< 50
406	243	20	10	15	< 1	< 50	440	277	15	10	50	< 1	< 50
407	244	15	10	< 10	1	< 50	441	278	15	30	70	< 1	< 50
408	245	50	15	20	3	< 50	442	279	20	30	100	< 1	< 50
409	246	30	150	20	7	< 50	443	280	20	30	100	< 1	< 50
410	247	10	15	30	1	< 50	444	SK. 1	20	10	50	< 1	< 50
411	248	50	50	70	5	< 50	445	2	15	15	50	< 1	< 50
412	249	15	20	100	1	< 50	446	3	50	10	70	1	< 50
413	250	100	150	150	< 1	< 50	447	4	30	15	50	1	< 50
414	251	50	150	150	< 1	< 50	448	5	20	200	300	< 2	< 50
415	252	150	50	50	< 1	< 50	449	6	30	15	50	2	< 50
416	253	15	20	70	< 1	< 50	450	7	20	10	30	1	< 50
417	254	30	50	50	1	< 50	451	8	15	15	50	1	< 50
418	255	50	10	30	< 1	< 50	452	9	15	10	50	1	< 50
419	256	70	70	50	< 1	< 50	453	10	30	10	50	2	< 50
420	257	70	15	50	< 1	< 50	454	11	20	15	50	2	< 50
421	258	50	10	50	< 1	< 50	455	12	15	10	30	1	< 50
422	259	50	10	30	< 1	< 50	456	13	20	15	50	1	< 50
423	260	20	7	30	1	< 50	457	14	20	15	70	1	< 50
424	261	200	15	50	< 1	< 50	458	15	15	15	50	1	< 50
425	262	50	20	100	< 1	< 50	459	16	15	10	70	< 1	< 50
426	263	50	15	100	< 1	< 50	460	17	30	10	50	< 1	< 50
427	264	30	10	100	< 1	< 50	461	18	20	7	50	< 1	< 50
428	265	30	10	150	< 1	< 50	462	19	70	15	70	1	< 50
429	266	15	100	20	1	< 50	463	20	50	15	50	< 1	< 50
430	267	15	15	30	1	< 50	464	21	20	10	30	< 1	< 50

No.	Sample No.	Grade (ppm)					No.	Sample No.	Grade (ppm)				
		Cu	Pb	Zn	Mo	W			Cu	Pb	Zn	Mo	W
537	SK. 94	20	500	150	2	< 50	571	NK.128	100	20	50	2	< 50
538	95	100	30	30	3	< 50	572	129	50	10	50	< 1	< 50
539	96	150	2000	300	7	< 50	573	130	30	10	70	< 1	< 50
540	97	20	70	100	2	< 50	574	131	10	7	30	2	< 50
541	98	2000	30	100	7	< 50	575	132	15	15	70	< 1	< 50
542	99	20	30	50	3	< 50	576	133	10	10	50	< 1	< 50
543	100	20	30	50	2	< 50	577	134	10	10	70	< 1	< 50
544	101	50	1000	500	< 1	< 50	578	135	15	50	50	3	< 50
545	102	15	15	50	< 1	< 50	579	136	15	15	100	3	< 50
546	103	15	10	50	< 1	< 50	580	137	10	10	50	< 1	< 50
547	104	70	100	70	1	< 50	581	138	10	10	70	< 1	< 50
548	105	10	7	15	1	< 50	582	139	15	15	50	< 1	< 50
549	106	30	70	150	3	< 50	583	140	10	10	30	< 1	< 50
550	107	30	10	50	< 1	< 50	584	141	10	10	30	< 1	< 50
551	108	30	10	30	< 1	< 50	585	142	15	10	50	< 1	< 50
552	109	30	15	70	< 1	< 50	586	143	15	15	50	< 1	< 50
553	110	30	10	50	< 1	< 50	587	144	10	10	30	2	< 50
554	111	20	10	50	< 1	< 50	588	145	10	10	50	< 1	< 50
555	112	15	10	50	< 1	< 50	589	146	10	10	20	< 1	< 50
556	113	15	10	50	< 1	< 50	590	147	10	10	30	1	< 50
557	114	15	10	50	< 1	< 50	591	148	10	10	30	< 1	< 50
558	115	20	15	70	1	< 50	592	149	10	15	30	< 1	< 50
559	116	30	10	50	1	< 50	593	150	20	10	30	1	< 50
560	117	30	15	70	< 1	< 50	594	151	15	15	50	1	< 50
561	118	30	15	50	< 1	< 50	595	152	10	7	10	< 1	< 50
562	119	15	10	50	1	< 50	596	153	15	10	50	< 1	< 50
563	120	15	15	50	3	< 50	597	154	20	15	70	< 1	< 50
564	121	15	15	100	< 1	< 50	598	155	30	15	50	< 1	< 50
565	122	15	7	30	2	< 50	599	156	10	10	30	1	< 50
566	123	70	15	30	2	< 50	600	157	15	10	50	< 1	< 50



No.	Sample No.	Grade (ppm)					No.	Sample No.	Grade (ppm)				
		Cu	Pb	Zn	Mo	W			Cu	Pb	Zn	Mo	W
537	NK. 94	20	500	150	2	< 50	571	NK. 128	100	20	50	2	< 50
538	95	100	30	30	3	< 50	572	129	50	10	50	< 1	< 50
539	96	150	2000	300	7	< 50	573	130	30	10	70	< 1	< 50
540	97	20	70	100	2	< 50	574	131	10	7	30	2	< 50
541	98	2000	30	100	7	< 50	575	132	15	15	70	< 1	< 50
542	99	20	30	50	3	< 50	576	133	10	10	50	< 1	< 50
543	100	20	30	50	2	< 50	577	134	10	10	70	< 1	< 50
544	101	50	1000	500	< 1	< 50	578	135	15	50	50	3	< 50
545	102	15	15	50	< 1	< 50	579	136	15	15	100	3	< 50
546	103	15	10	50	< 1	< 50	580	137	10	10	50	< 1	< 50
547	104	70	100	70	1	< 50	581	138	10	10	70	< 1	< 50
548	105	10	7	15	1	< 50	582	139	15	15	50	< 1	< 50
549	106	30	70	150	3	< 50	583	140	10	10	30	< 1	< 50
550	107	30	10	50	< 1	< 50	584	141	10	10	30	< 1	< 50
551	108	30	10	30	< 1	< 50	585	142	15	10	50	< 1	< 50
552	109	30	15	70	< 1	< 50	586	143	15	15	50	< 1	< 50
553	110	30	10	50	< 1	< 50	587	144	10	10	30	2	< 50
554	111	20	10	50	< 1	< 50	588	145	10	10	50	< 1	< 50
555	112	15	10	50	< 1	< 50	589	146	10	10	20	< 1	< 50
556	113	15	10	50	< 1	< 50	590	147	10	10	30	1	< 50
557	114	15	10	50	< 1	< 50	591	148	10	10	30	< 1	< 50
558	115	20	15	70	1	< 50	592	149	10	15	30	< 1	< 50
559	116	30	10	50	1	< 50	593	150	20	10	30	1	< 50
560	117	30	15	70	< 1	< 50	594	151	15	15	50	1	< 50
561	118	30	15	50	< 1	< 50	595	152	10	7	10	< 1	< 50
562	119	15	10	50	1	< 50	596	153	15	10	50	< 1	< 50
563	120	15	15	50	3	< 50	597	154	20	15	70	< 1	< 50
564	121	15	15	100	< 1	< 50	598	155	30	15	50	< 1	< 50
565	122	15	7	30	2	< 50	599	156	10	10	30	1	< 50
566	123	70	15	30	2	< 50	600	157	15	10	50	< 1	< 50
567	124	50	10	50	< 1	< 50	601	158	50	10	50	< 1	< 50

No.	Sample No.	Grade (ppm)					No.	Sample No.	Grade (ppm)				
		Cu	Pb	Zn	Mo	W			Cu	Pb	Zn	Mo	W
673	NK. 230	10	15	70	2	< 50							
674	231	15	15	100	< 1	< 50							
675	232	20	10	70	< 1	< 50							
676	233	20	10	50	2	< 50							
677	234	20	20	70	3	< 50							
678	235	15	20	70	1	< 50							
679	236	15	15	70	2	< 50							
680	237	15	10	50	< 1	< 50							
681	238	20	20	50	< 1	< 50							
682	239	30	10	150	< 1	< 50							
683	240	50	10	50	< 1	< 50							
684	241	30	50	100	2	< 50							
685	242	30	20	50	2	< 50							
686	243	20	15	70	2	< 50							
687	244	20	15	50	< 1	< 50							
688	245	30	10	30	1	< 50							
689	246	20	15	50	1	< 50							
690	247	15	15	30	1	< 50							
691	248	15	30	20	7	< 50							
692	249	20	10	70	< 1	< 50							
693	250	20	15	70	< 1	< 50							
694	251	15	10	50	< 1	< 50							
695	252	15	20	70	< 1	< 50							
696	253	15	10	50	< 1	< 50							
697	254	20	300	300	1	< 50							
698	255	30	150	200	2	< 50							

550	107	30	10	50	< 1	< 50	584	141	10	10	30	< 1	< 50
551	108	30	10	30	< 1	< 50	585	142	15	10	50	< 1	< 50
552	109	30	15	70	< 1	< 50	586	143	15	15	50	< 1	< 50
553	110	30	10	50	< 1	< 50	587	144	10	10	30	2	< 50
554	111	20	10	50	< 1	< 50	588	145	10	10	50	< 1	< 50
555	112	15	10	50	< 1	< 50	589	146	10	10	20	< 1	< 50
556	113	15	10	50	< 1	< 50	590	147	10	10	30	1	< 50
557	114	15	10	50	< 1	< 50	591	148	10	10	30	< 1	< 50
558	115	20	15	70	1	< 50	592	149	10	15	30	< 1	< 50
559	116	30	10	50	1	< 50	593	150	20	10	30	1	< 50
560	117	30	15	70	< 1	< 50	594	151	15	15	50	1	< 50
561	118	30	15	50	< 1	< 50	595	152	10	7	10	< 1	< 50
562	119	15	10	50	1	< 50	596	153	15	10	50	< 1	< 50
563	120	15	15	50	3	< 50	597	154	20	15	70	< 1	< 50
564	121	15	15	100	< 1	< 50	598	155	30	15	50	< 1	< 50
565	122	15	7	30	2	< 50	599	156	10	10	30	1	< 50
566	123	70	15	30	2	< 50	600	157	15	10	50	< 1	< 50
567	124	50	10	50	< 1	< 50	601	158	50	10	50	< 1	< 50
568	125	30	20	70	< 1	< 50	602	159	15	30	50	5	< 50
569	126	50	10	50	< 1	< 50	603	160	15	15	10	3	< 50
570	127	30	15	70	< 1	< 50	604	161	20	15	50	< 1	< 50

686	243	20	15	70	2	< 50							
687	244	20	15	50	< 1	< 50							
688	245	30	10	30	1	< 50							
689	246	20	15	50	1	< 50							
690	247	15	15	30	1	< 50							
691	248	15	30	20	7	< 50							
692	249	20	10	70	< 1	< 50							
693	250	20	15	70	< 1	< 50							
694	251	15	10	50	< 1	< 50							
695	252	15	20	70	< 1	< 50							
696	253	15	10	50	< 1	< 50							
697	254	20	300	300	1	< 50							
698	255	30	150	200	2	< 50							

No.	Sample No.	Grade (ppm)					No.	Sample No.	Grade (ppm)				
		Cu	Pb	Zn	Mo	W			Cu	Pb	Zn	Mo	W
605	NK.162	50	20	70	< 1	< 50	639	NK.196	20	30	70	3	< 50
606	163	20	20	30	2	< 50	640	197	15	20	50	5	< 50
607	164	30	10	70	< 1	< 50	641	198	30	50	50	7	< 50
608	165	30	15	70	< 1	< 50	642	199	30	30	30	3	< 50
609	166	50	30	100	7	< 50	643	200	20	20	50	3	< 50
610	167	100	50	100	10	< 50	644	201	70	30	50	5	< 50
611	168	50	150	150	5	< 50	645	202	15	20	70	< 1	< 50
612	169	30	50	100	< 1	< 50	646	203	20	20	30	7	< 50
613	170	70	100	150	< 1	< 50	647	204	20	20	30	5	< 50
614	171	50	50	100	2	< 50	648	205	15	15	50	2	< 50
615	172	70	30	100	1	< 50	649	206	20	15	50	3	< 50
616	173	50	30	100	< 1	< 50	650	207	30	70	100	5	< 50
617	174	50	70	150	< 1	< 50	651	208	50	20	70	5	< 50
618	175	50	50	100	< 1	< 50	652	209	30	20	100	3	< 50
619	176	20	30	200	< 1	< 50	653	210	20	20	50	2	< 50
620	177	30	20	100	< 1	< 50	654	211	30	30	150	5	< 50
621	178	20	100	150	< 1	< 50	655	212	30	50	100	3	< 50
622	179	20	50	100	< 1	< 50	656	213	20	50	100	10	< 50
623	180	30	15	20	< 1	< 50	657	214	15	15	70	3	< 50
624	181	30	20	50	1	< 50	658	215	20	15	70	3	< 50
625	182	20	15	50	< 1	< 50	659	216	10	20	30	5	< 50
626	183	20	20	100	< 1	< 50	660	217	10	30	50	3	< 50
627	184	20	15	70	< 1	< 50	661	218	20	50	100	7	< 50
628	185	20	100	150	< 1	< 50	662	219	20	20	70	10	< 50
629	186	20	50	150	< 1	< 50	663	220	10	30	50	5	< 50
630	187	20	30	70	1	< 50	664	221	70	50	100	< 1	< 50
631	188	30	70	30	5	< 50	665	222	30	100	150	10	< 50
632	189	15	30	50	2	< 50	666	223	30	200	200	10	< 50
633	190	10	20	10	2	< 50	667	224	30	70	100	5	< 50
634	191	30	30	30	3	< 50	668	225	30	150	70	7	< 50
635	192	20	50	30	5	< 50	669	226	10	10	< 10	< 1	< 50
636	193	20	20	100	7	< 50	670	227	15	50	50	< 1	< 50
637	194	50	50	30	10	< 50	671	228	15	50	50	< 1	< 50
638	195	30	30	50	5	< 50	672	229	10	10	30	< 1	< 50