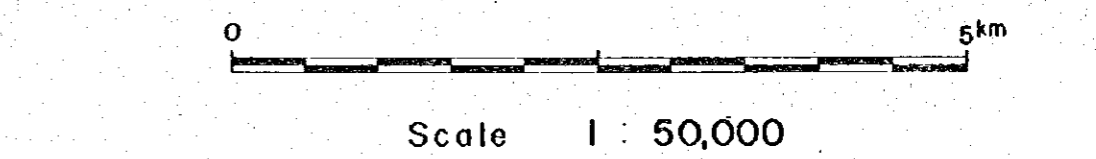


JAPAN INTERNATIONAL COOPERATION AGENCY
 METAL MINING AGENCY OF JAPAN
 FEBRUARY 1985
 Prepared by MINDECO



LEGEND

Quaternary		Q gravel, sand, mud
Cretaceous		Kd dolomite
		Ks sandstone, siltstone, conglomerate
Triassic		Ts sandstone, siltstone, conglomerate
CIV Formation		CIVp perlitic schist
		CIVl limestone
		CIVn andesite, tuff, tuff breccia
CIII Formation		CIIIp psammitic schist
		CIIIp pelitic schist
		CIIIl limestone
		CIIIo calcareous schist
		CIIIi green schist (tuff, tuff breccia)
		CIIIm psammitic schist
CII		CIIp pelitic schist

Cambrian

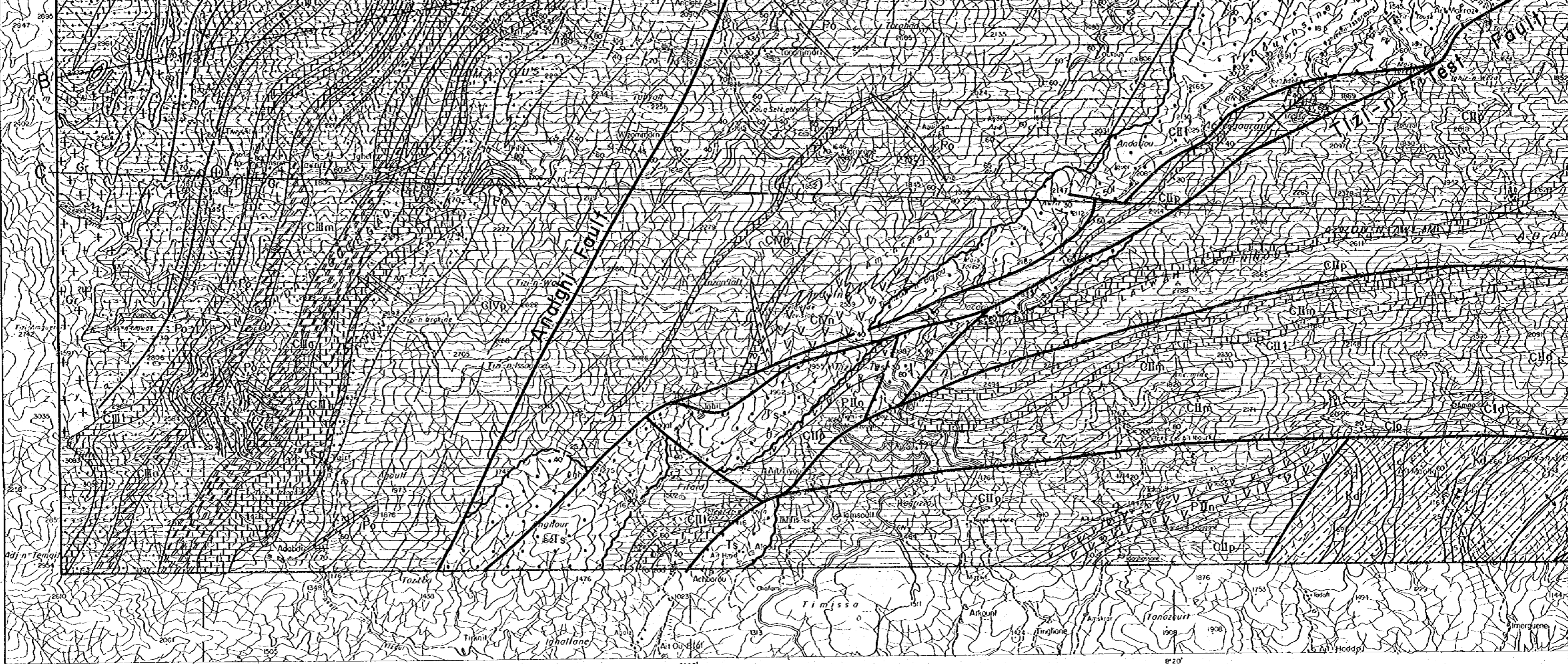
30°55'

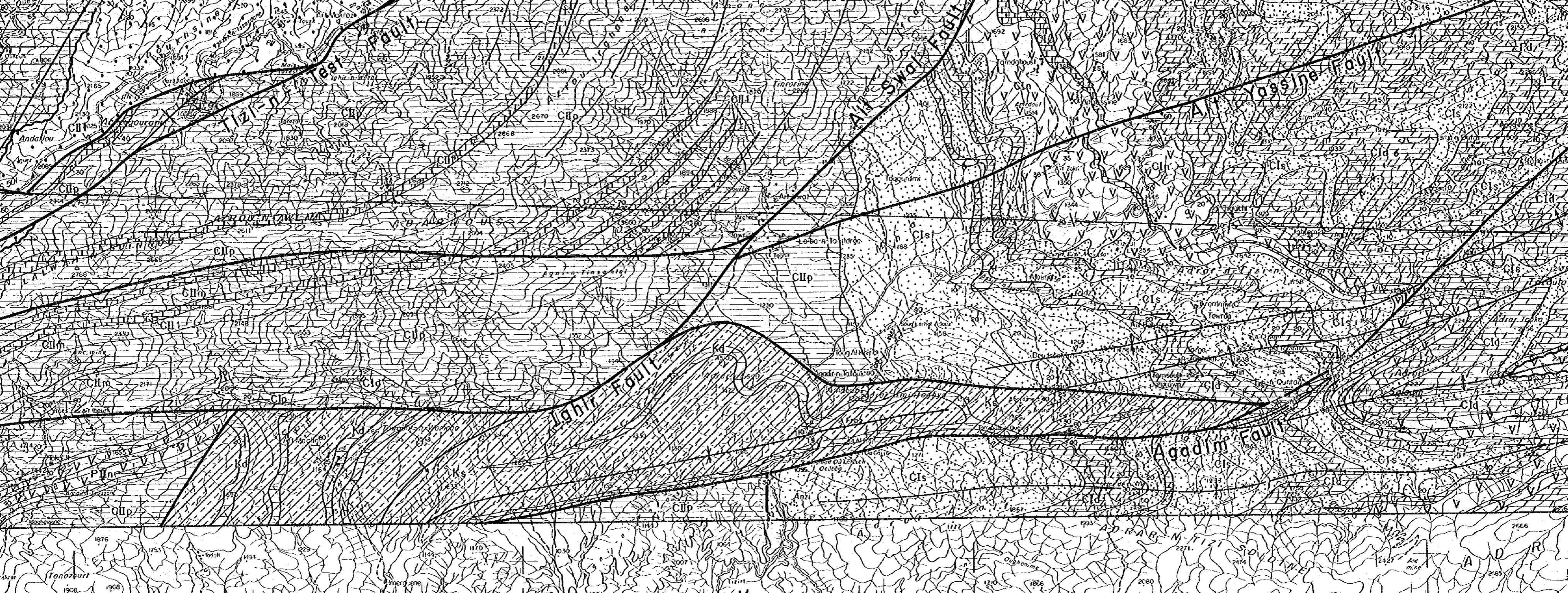
30°50'

8°30'

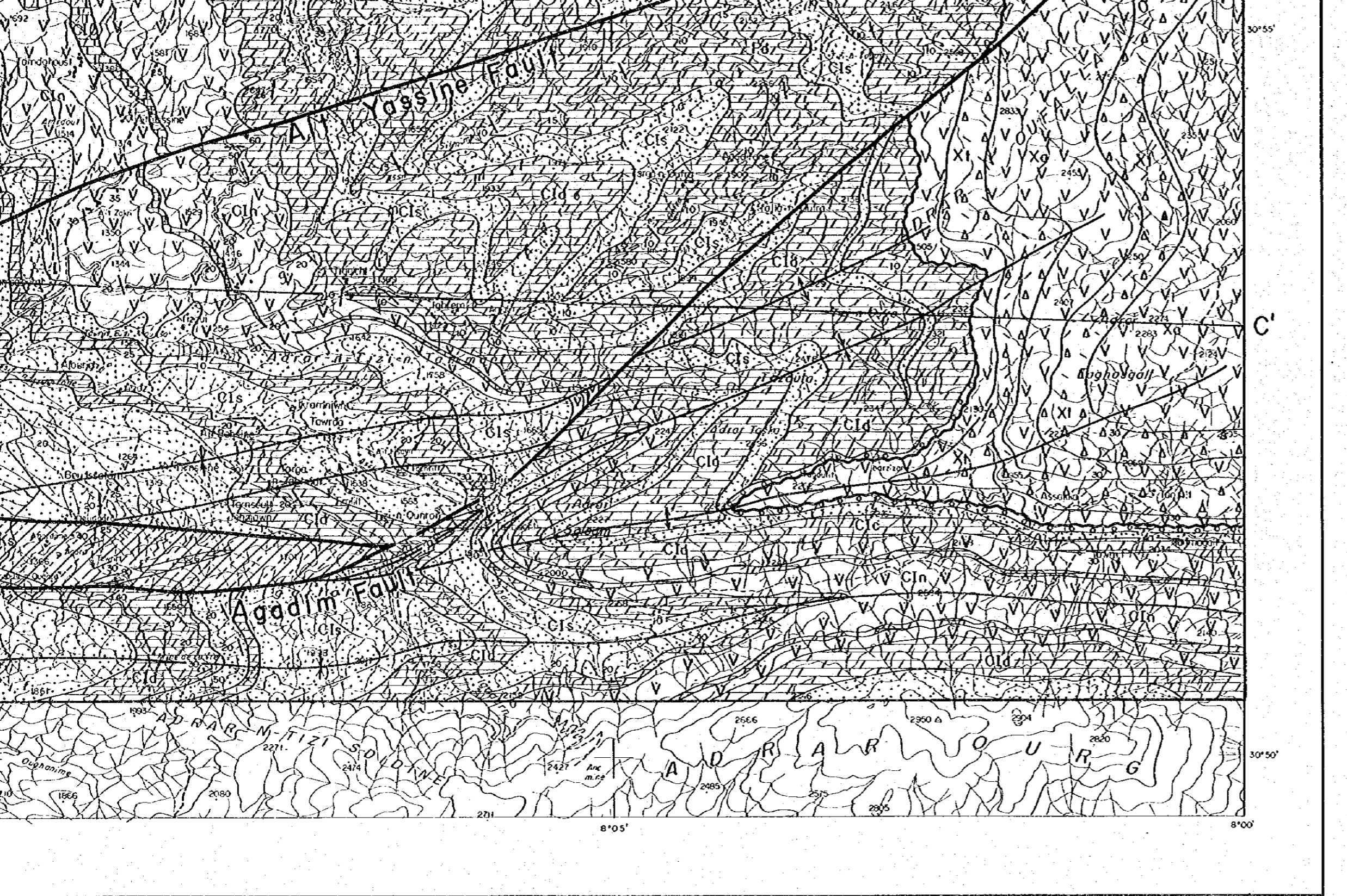
8°25'

8°20'



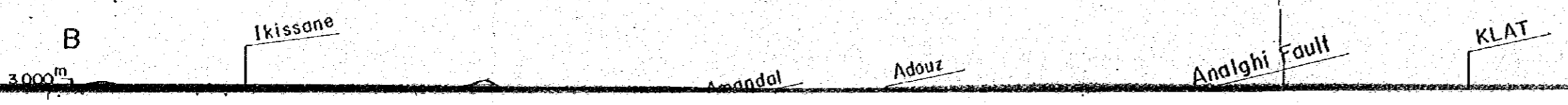
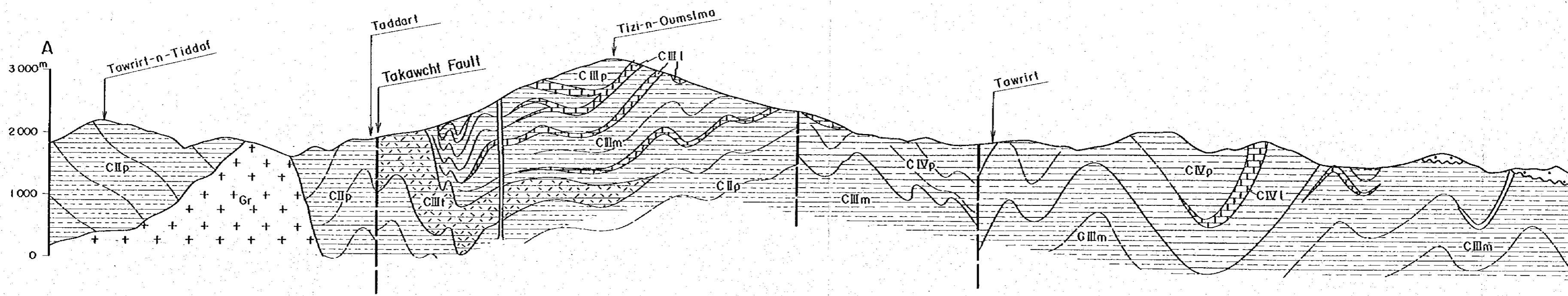


8°20' 8°15' 8°10' 8°05'

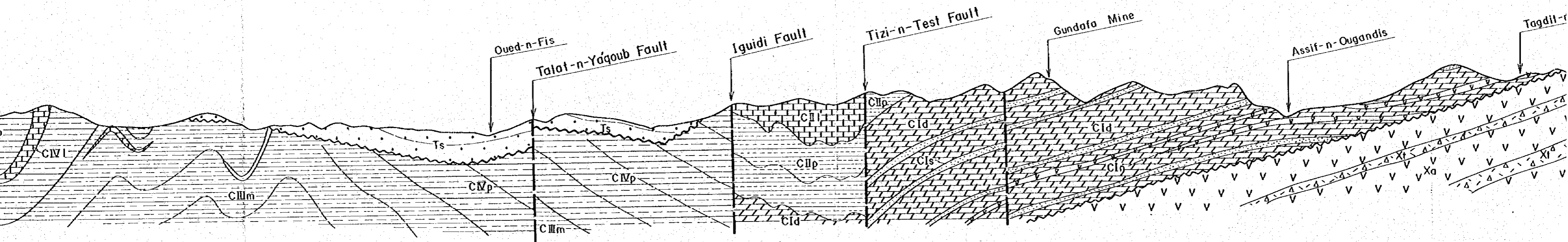


Quaternary		Q gravel, sand, mud	
Cretaceous		Kd dolomite	
		Ks sandstone, siltstone, conglomerate	
Triassic		Ts sandstone, siltstone, conglomerate	
Ordovician ~ Cambrian	CIV Formation		CIVp pelitic schist
			CIVl limestone
			CIVn andesite, tuff, tuff breccia
	CIII Formation		CIIIp psammilic schist
			CIIIp pelitic schist
			CIIIl limestone
			CIIIa calcareous schist
	CII Formation		CIIl limestone
			CIIp pelitic schist
		CIIm psammilic schist	
CI Formation		CIc conglomerate	
		CIn andesite, tuff, tuff breccia	
		CIs siltstone, sandstone	
Pre-Cambrian		Xa andesite	
		XI tuff, lapilli tuff, tuff breccia	
Intrusive rock		Gr granite, granodiorite	
		Po porphyrite, microgranite	

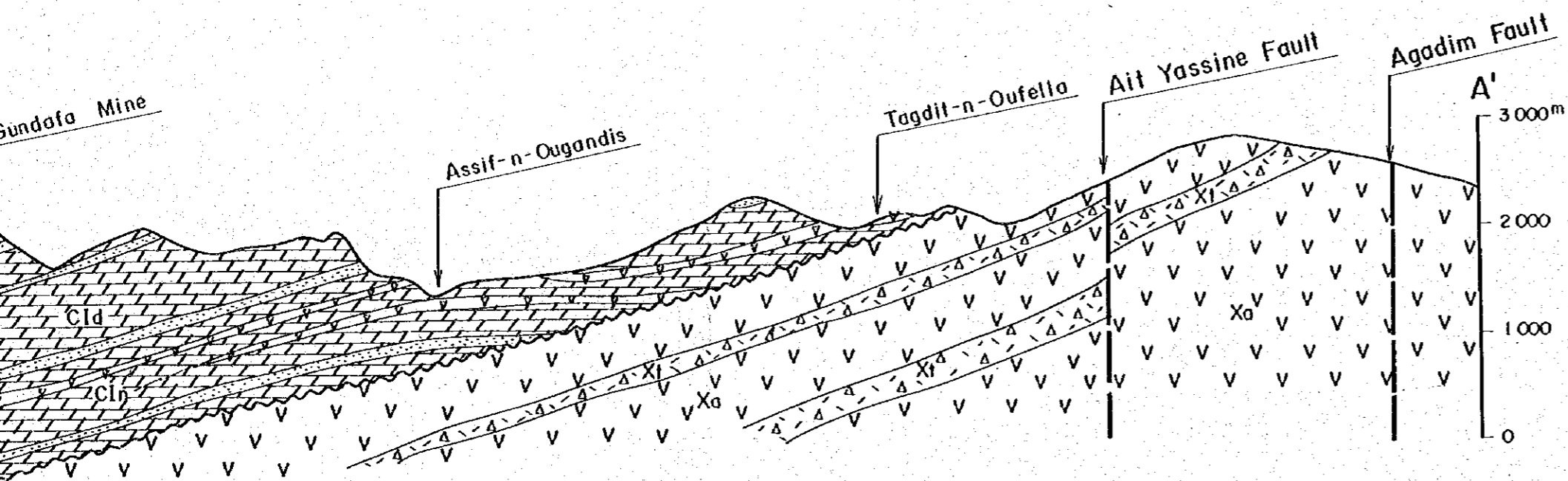
	fault
	unconformity
	anticlinal / synclinal axis / overfurned fold
	stratigraphic boundary
	bedding plane
	section line



A - A'



B - B'



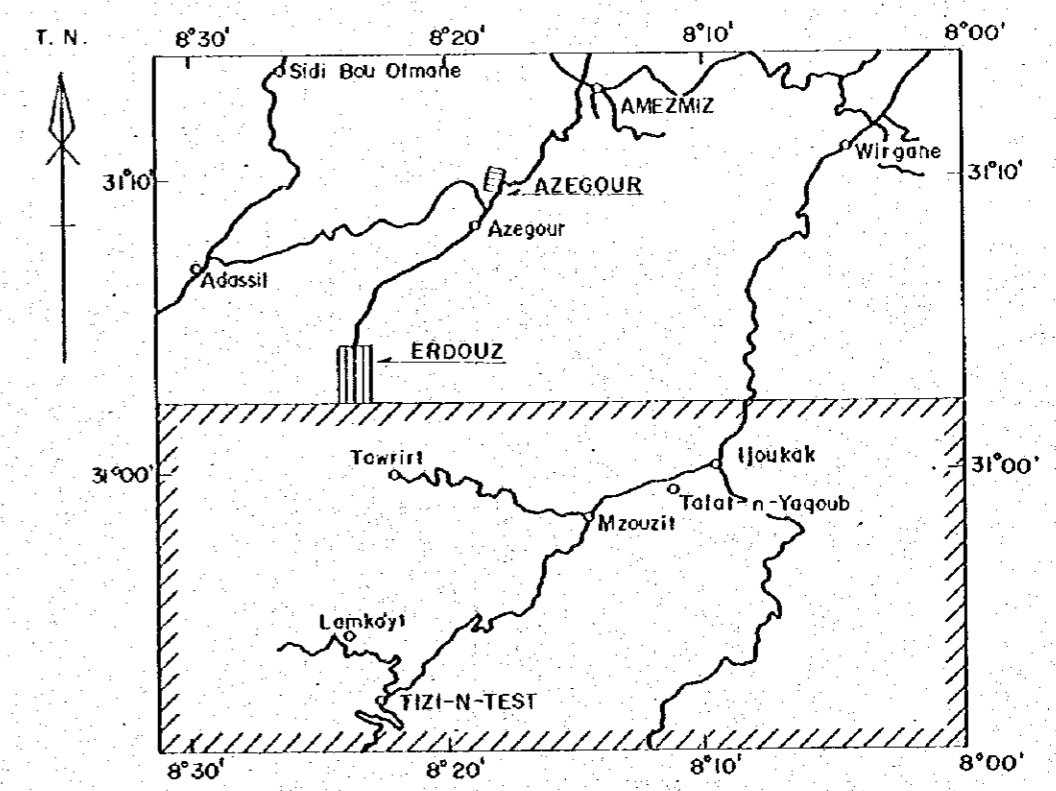
B'
3000m

国際協力事業団
11637
図書資料室蔵書

PL. I-2

GEOLOGICAL SURVEY
OF
HAUT ATLAS OCCIDENTAL AREA, MOROCCO
(PHASE II)

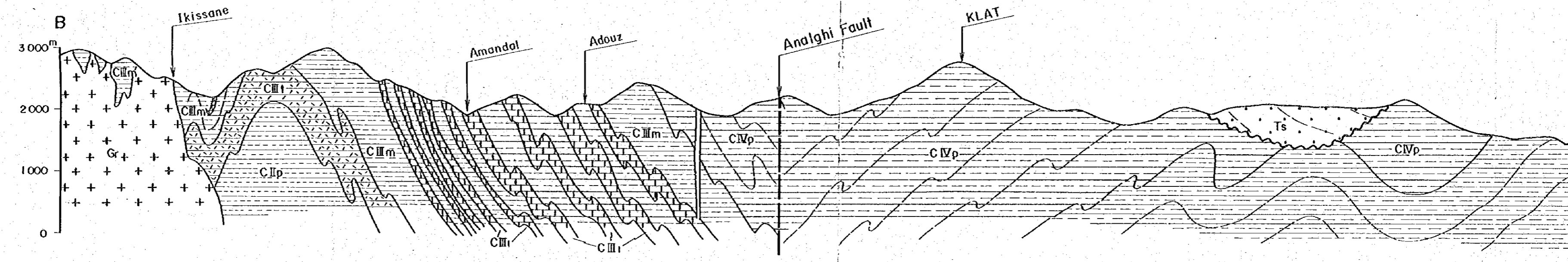
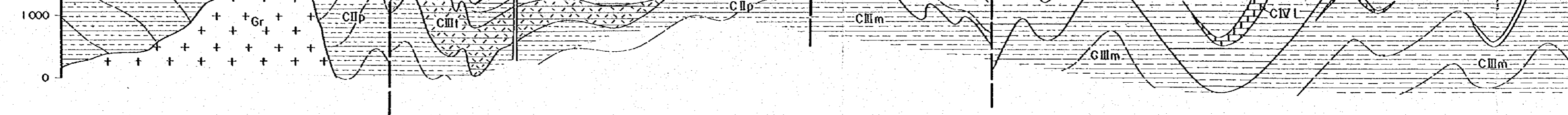
GEOLOGICAL PROFILES OF
SOUTHERN AREA

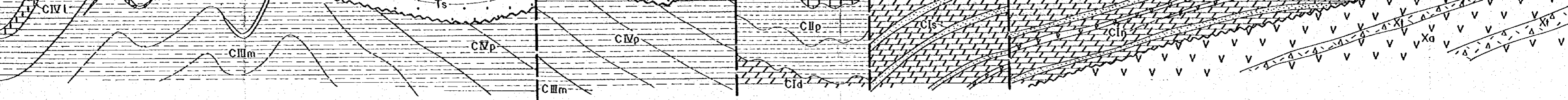


JAPAN INTERNATIONAL COOPERATION AGENCY
METAL MINING AGENCY OF JAPAN
FEBRUARY 1985
Prepared by MINDECO

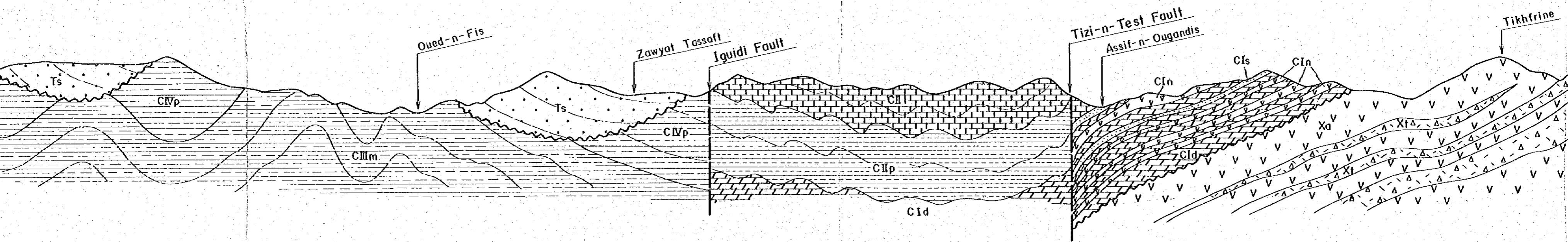


Scale 1 : 50,000

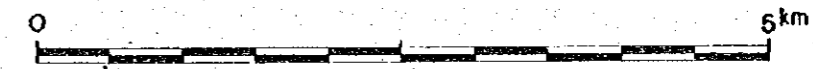
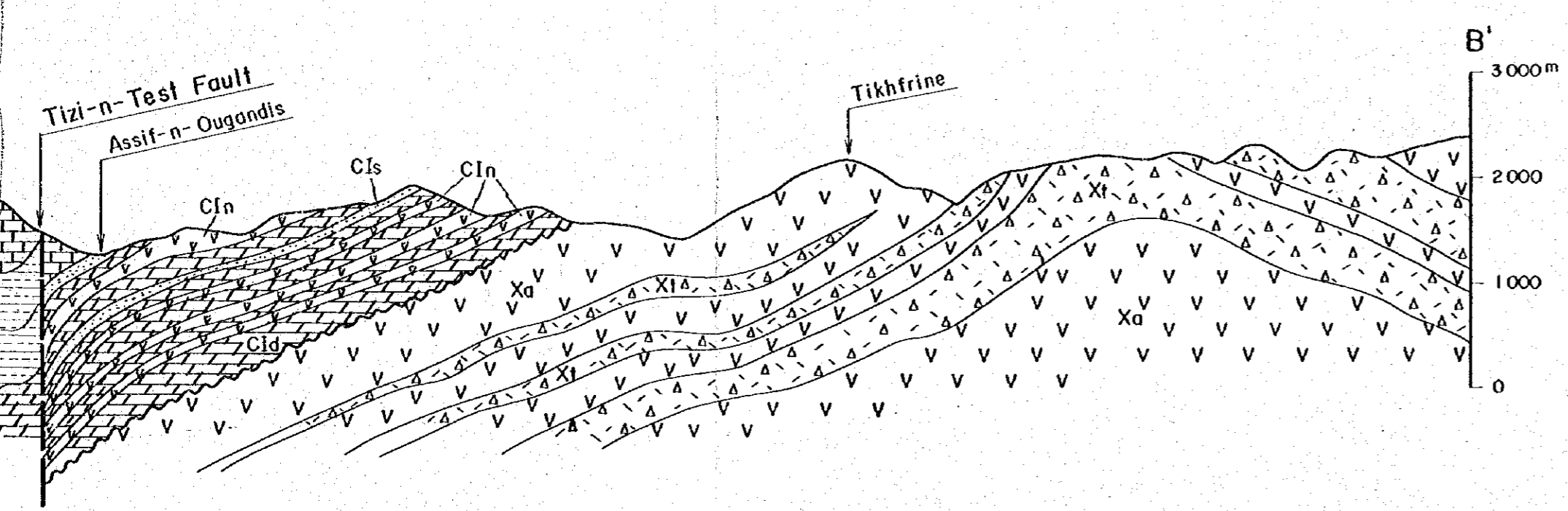
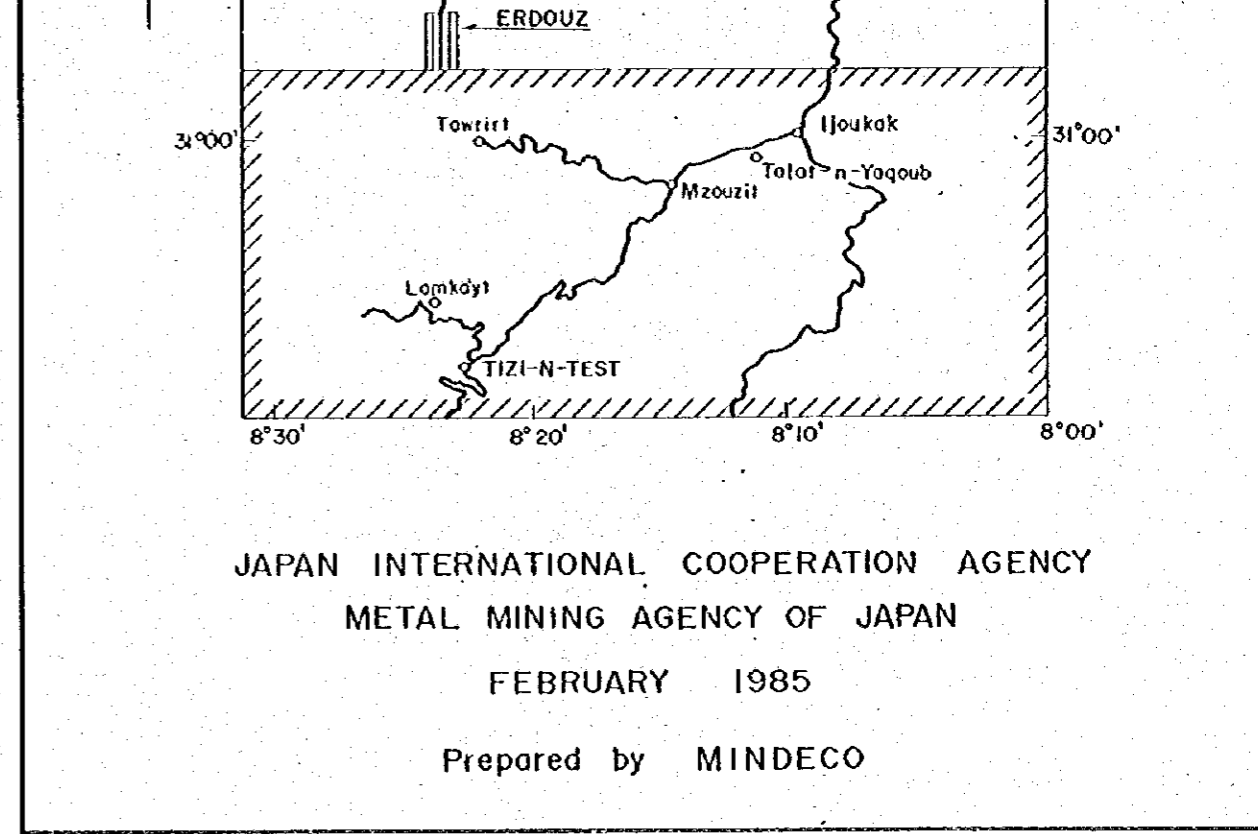
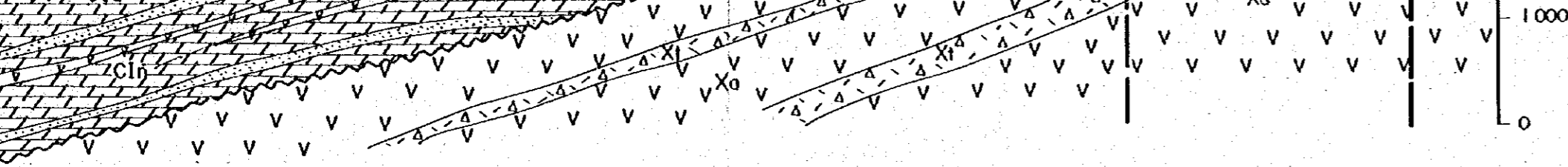




B - B'



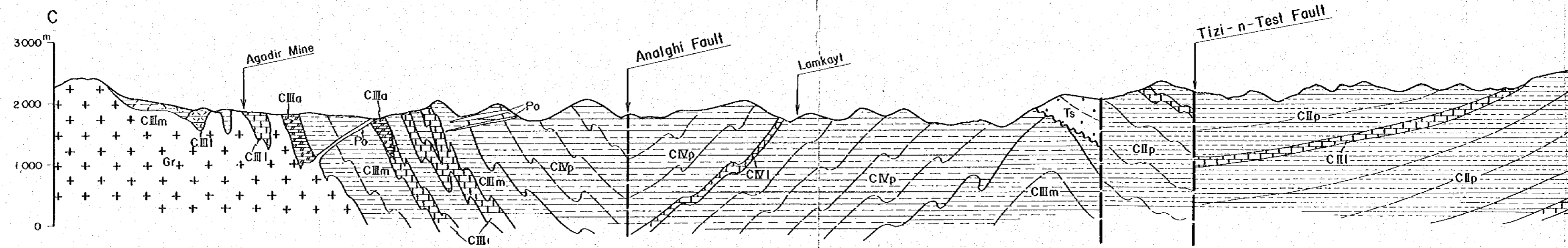
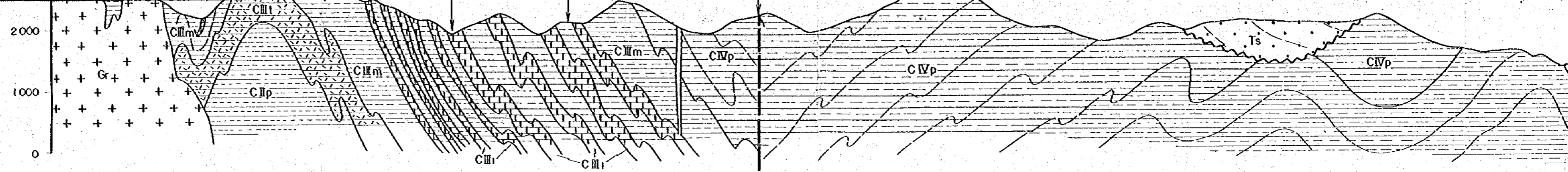
C - C'

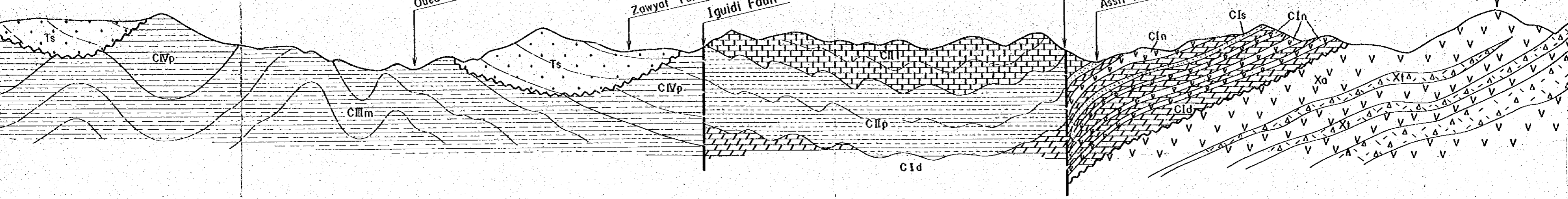


Scale 1 : 50,000

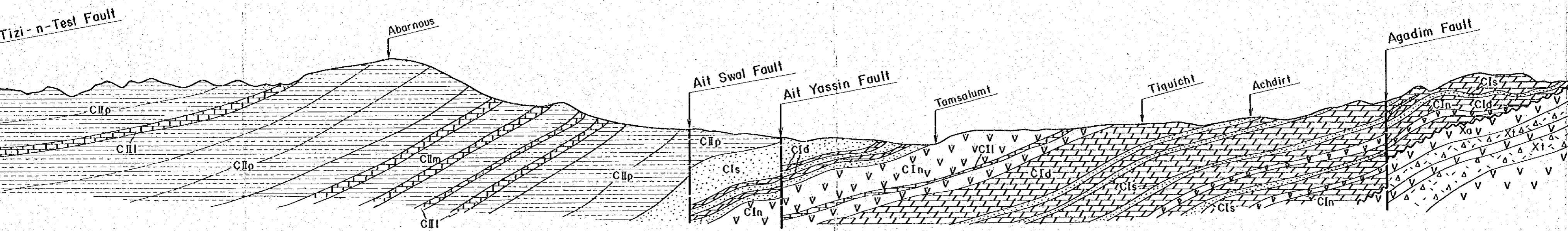
LEGEND

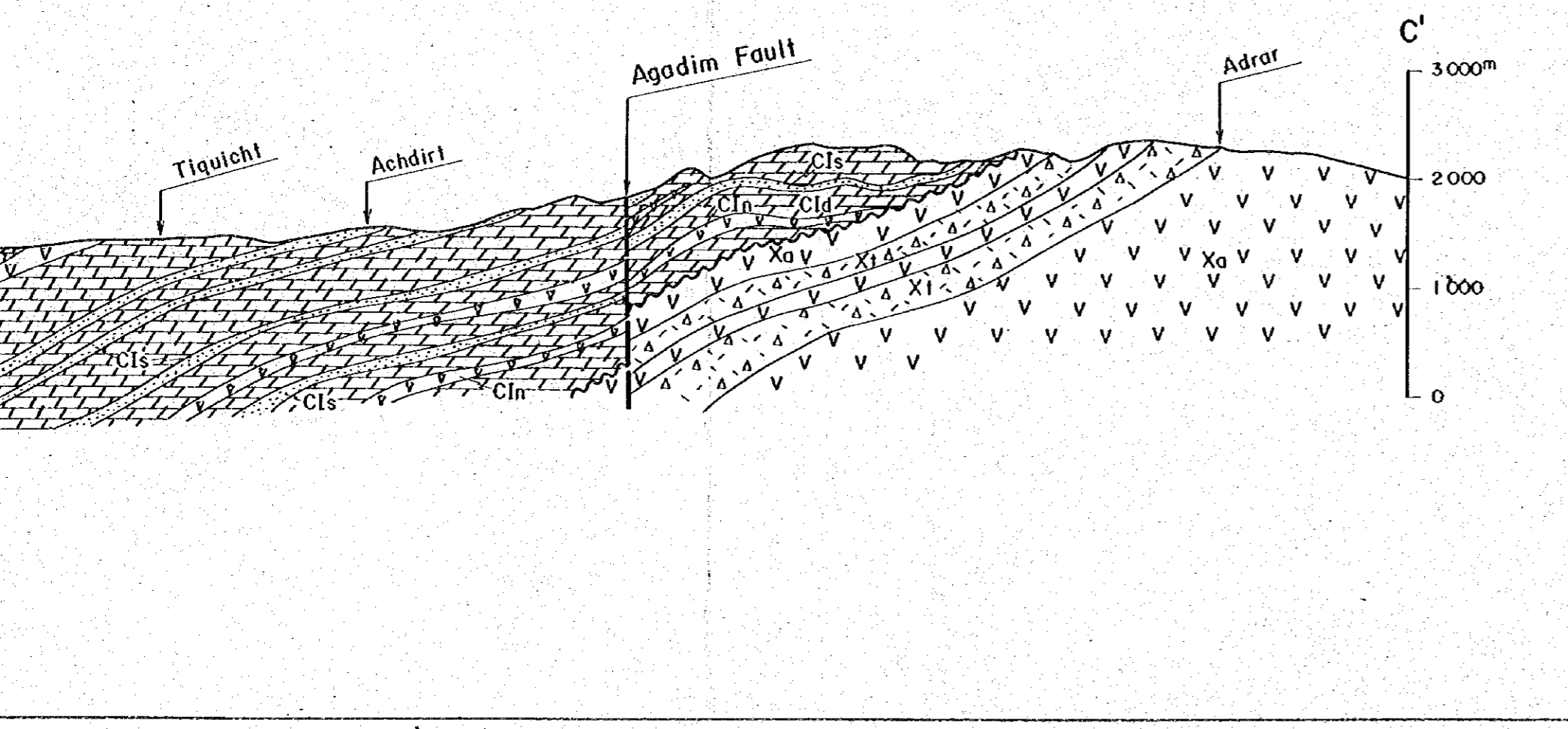
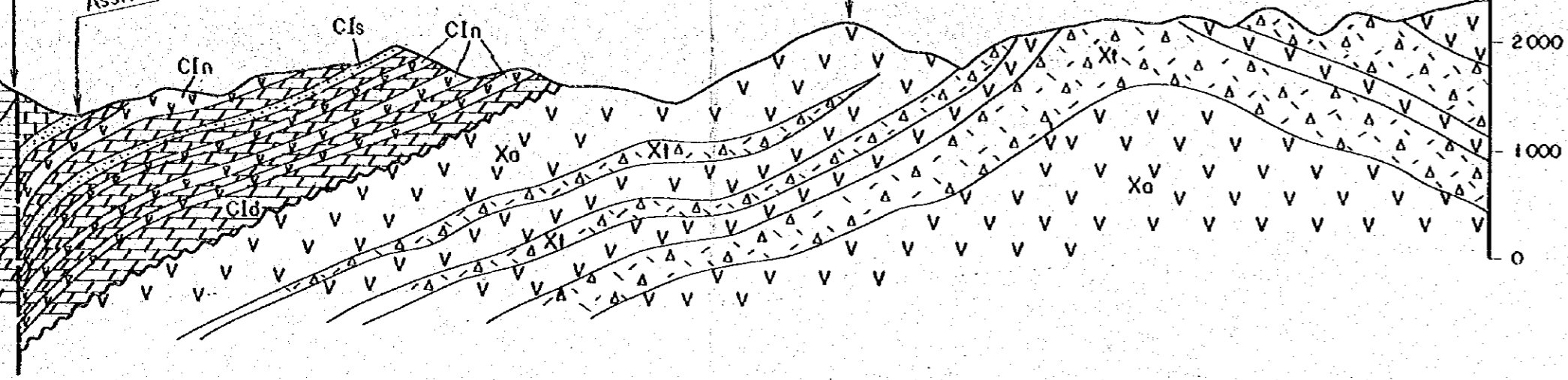
Quaternary		Q gravel, sand, mud
Cretaceous		Kd dolomite
		Ks sandstone, siltstone, conglomerate
Triassic		Ts sandstone, siltstone, conglomerate
CIV Formation		CIVp perlitic schist
		CIVl limestone
		CIVn andesite, tuff, tuff breccia
CIII Formation		CIII m psammilic schist
		CIII p petilic schist
		CIII l limestone
		CIII a calcareous schist
		CIII t green schist (tuff, tuff breccia)
Cambrian		CII m psammilic schist





C - C'





LEGEND

Quaternary	□	Q	gravel, sand, mud
Cretaceous	▨	Kd	dolomite
	▩	Ks	sandstone, siltstone, conglomerate
Triassic	◼	Ts	sandstone, siltstone, conglomerate
CIV Formation	▨	CIVp	perlite schist
	▩	CIVl	limestone
	▨	CIVn	andesite, tuff, tuff breccia
CIII Formation	▨	CIII m	psammite schist
	▨	CIII p	pelitic schist
	▩	CIII l	limestone
	▨	CIII a	calcareous schist
CII Formation	▨	CII m	psammite schist
	▨	CII p	pelitic schist
	▩	CII l	limestone
	▨	CII n	andesite, tuff, tuff breccia
	◼	CII s	siltstone, sandstone
CI Formation	▨	CIn	andesite, tuff, tuff breccia
	▩	CI l	limestone
	▨	CId	dolomite
	◼	CI c	conglomerate
Pre-Cambrian	▨	Xa	andesite
	▨	Xt	tuff, lapilli tuff, tuff breccia
Intrusive rock	▨	Gr	granite, granodiorite
	▨	Po	porphyrite, microgranite
	---		fault
	~~~~~		unconformity
	~~~~~		stratigraphic boundary

