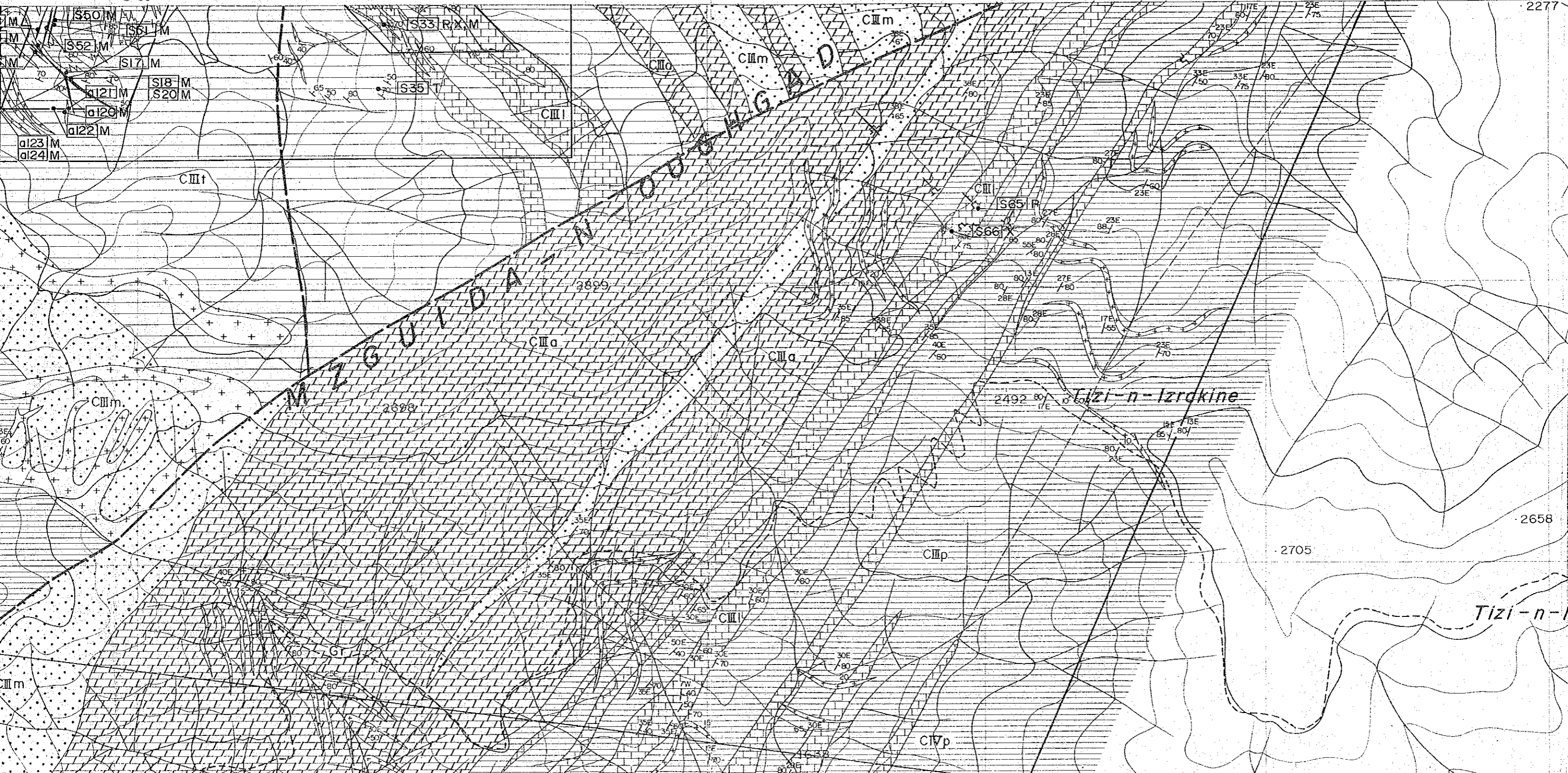
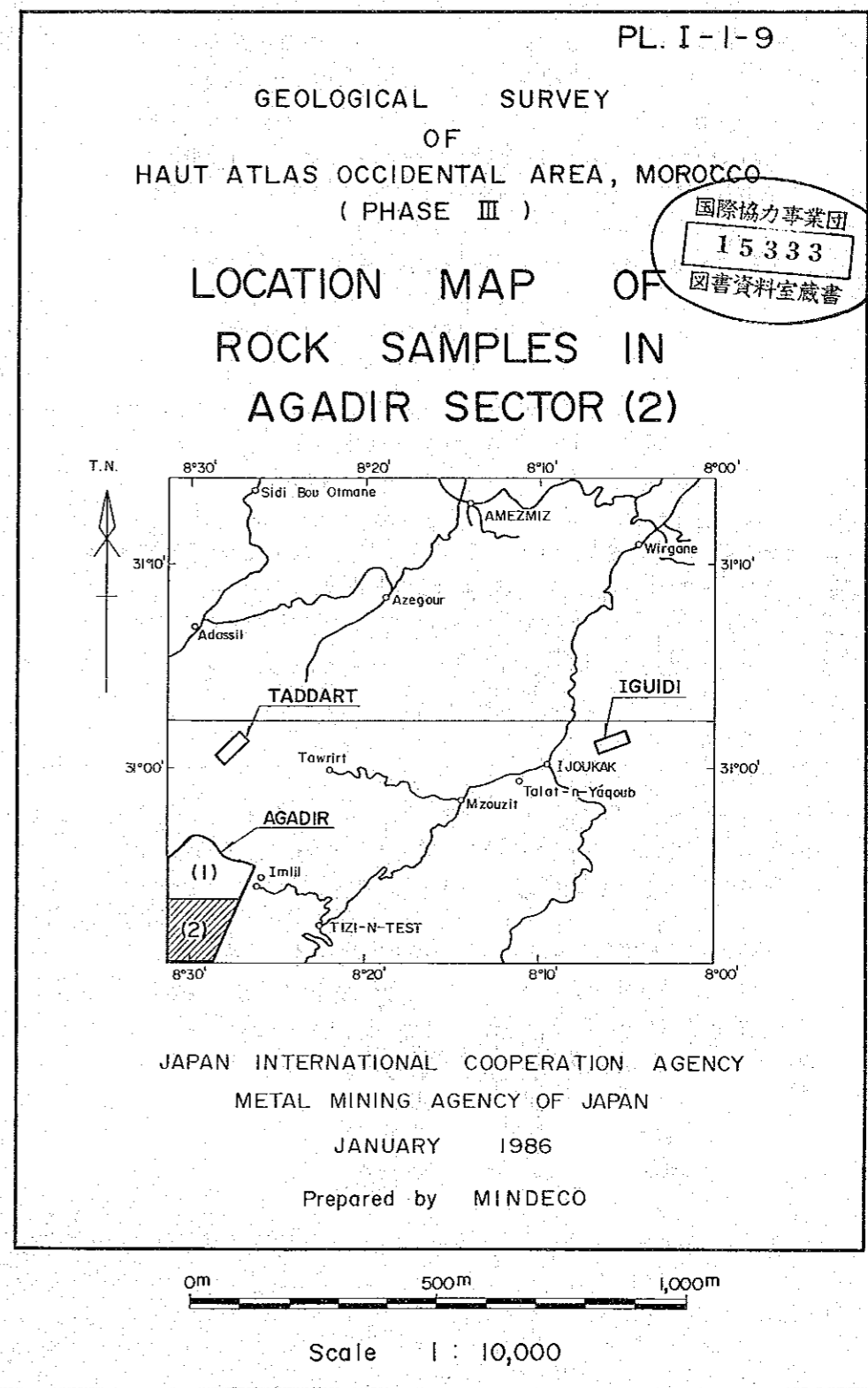
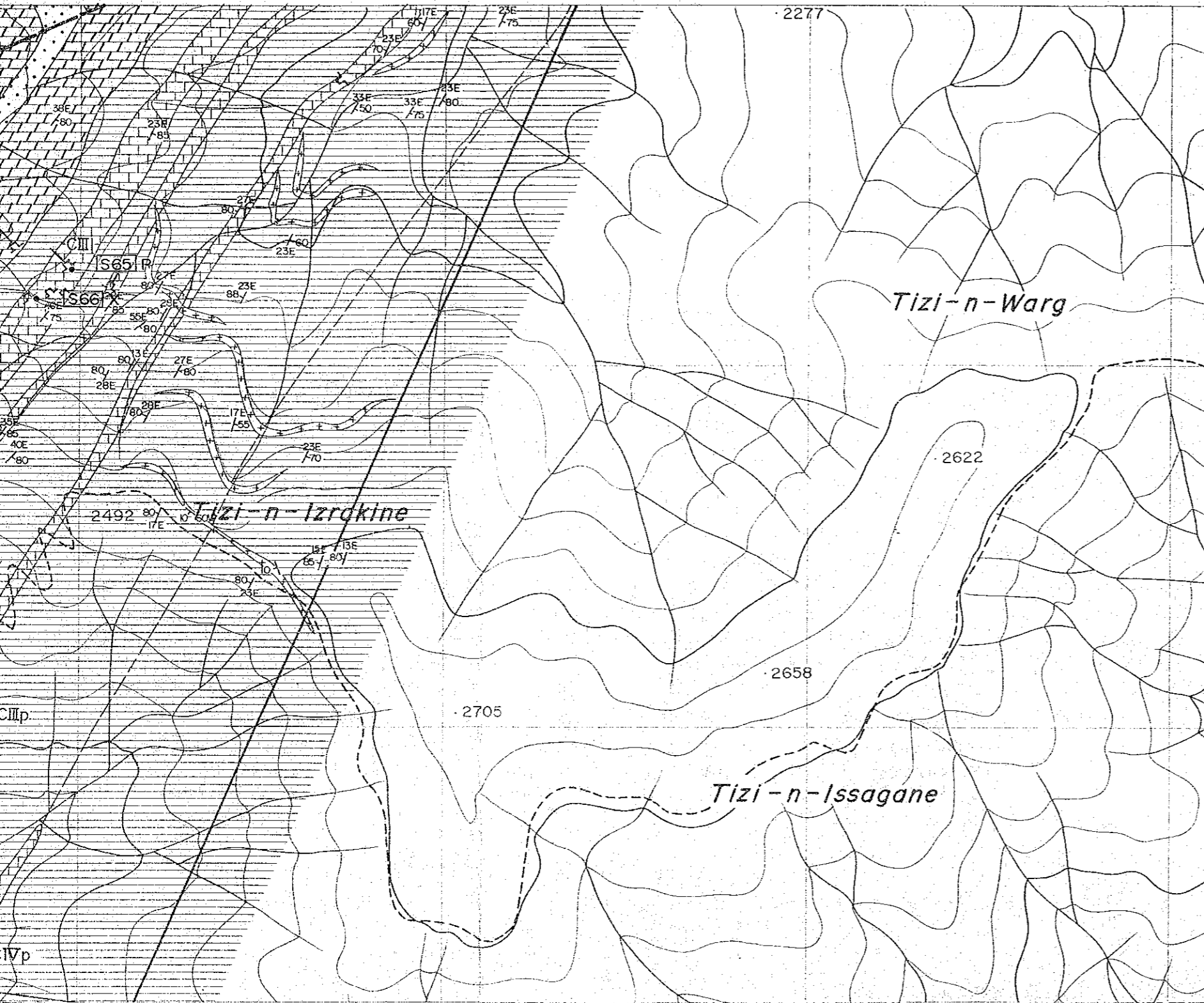


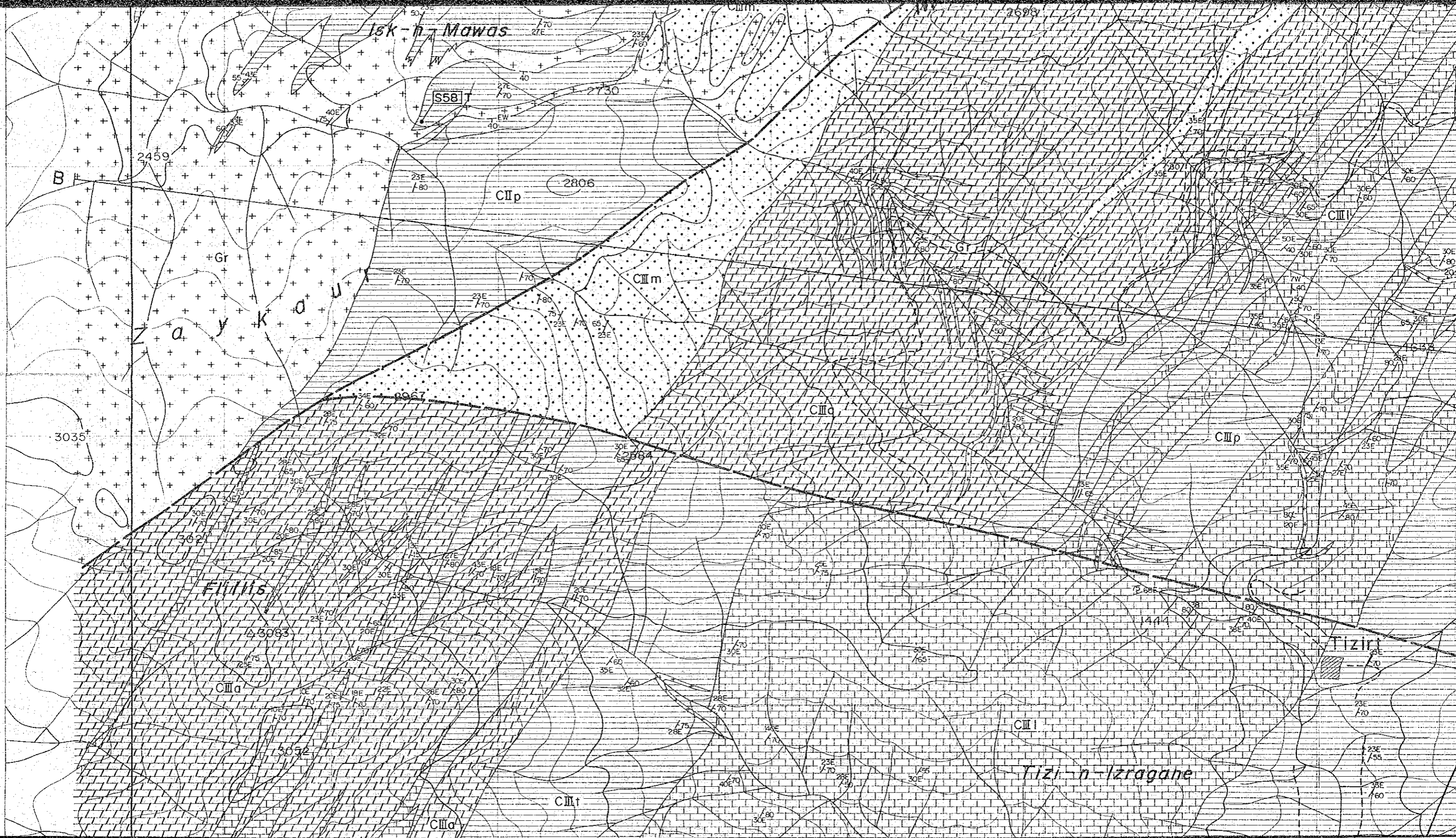
8° 30'

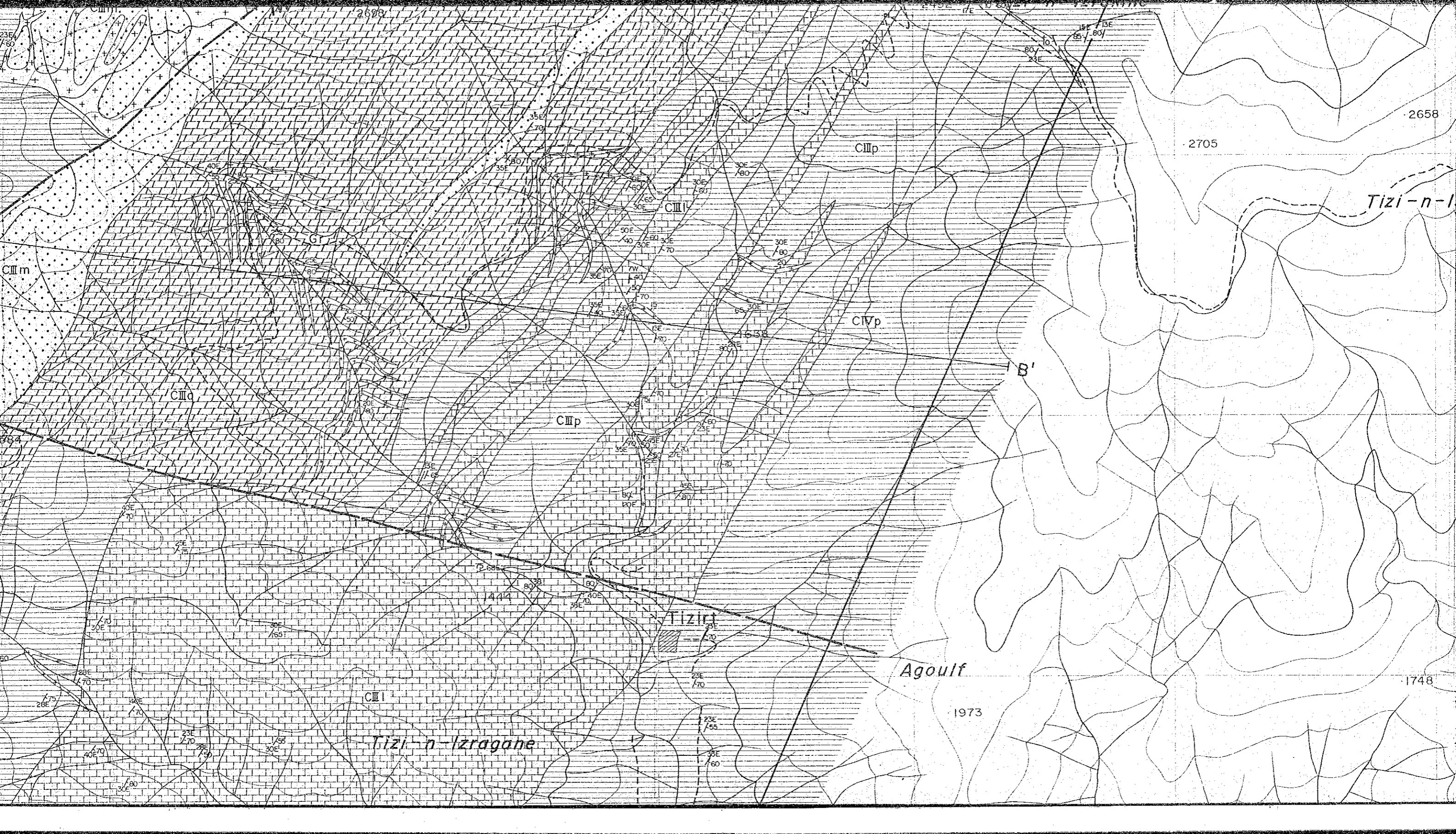
2277

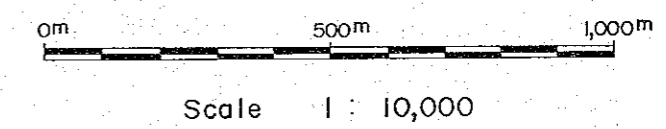
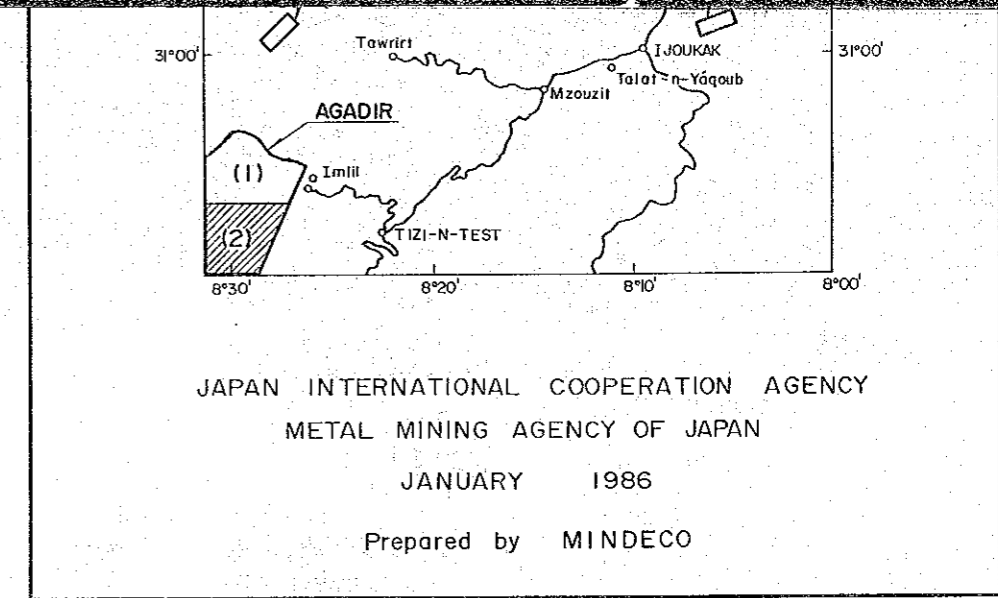
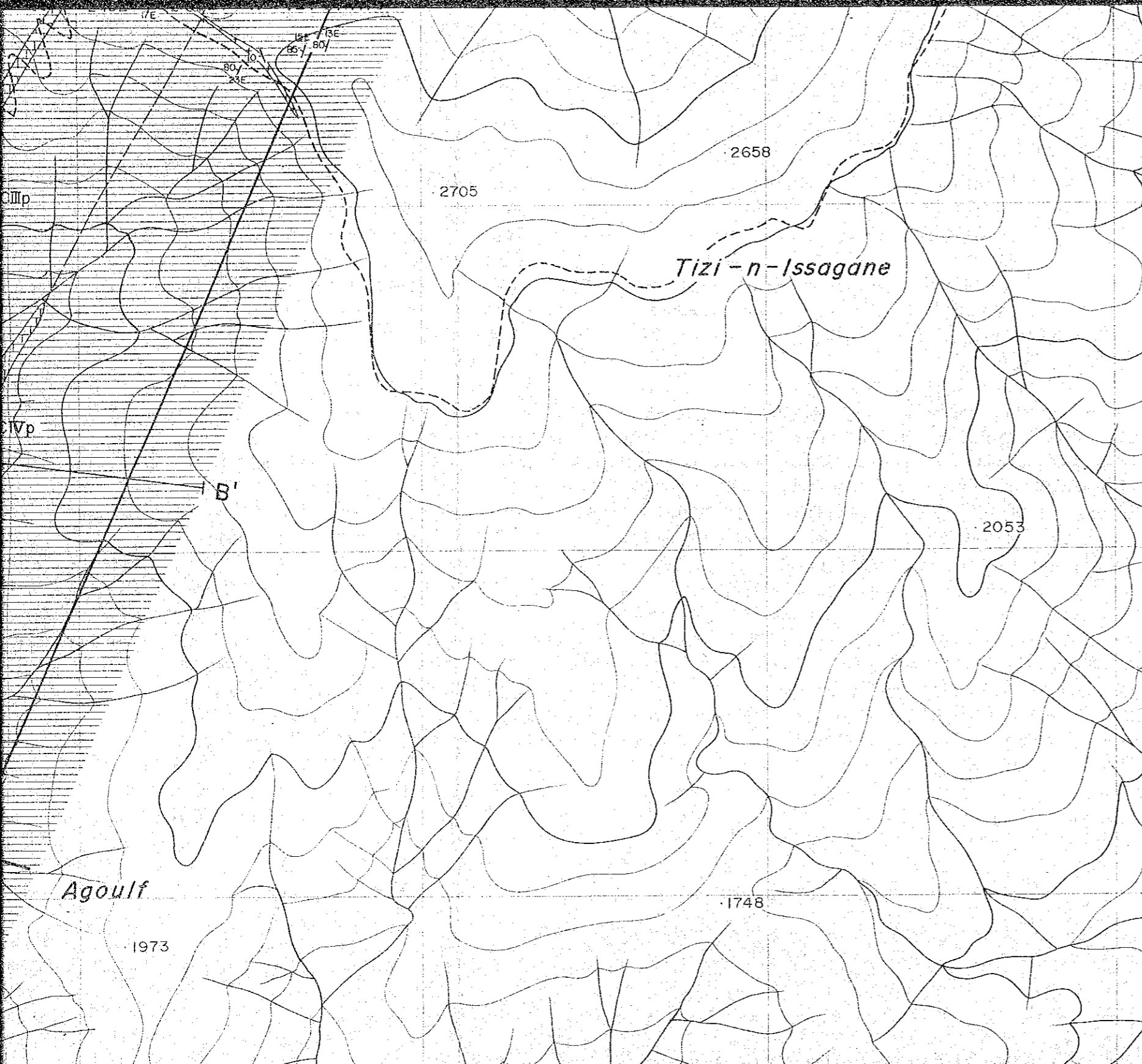


S50 M, S51 M, S52 M, S17 M, S18 M, S20 M, S121 M, S120 M, S122 M, S123 M, S124 M, S33 R, X, M, S35 T, CIII, CIIIa, CIIIb, CIIIc, CIIIp, CIIIq, 2899, 2598, 2492, 2705, 2658, Tizi-n-Izrakine



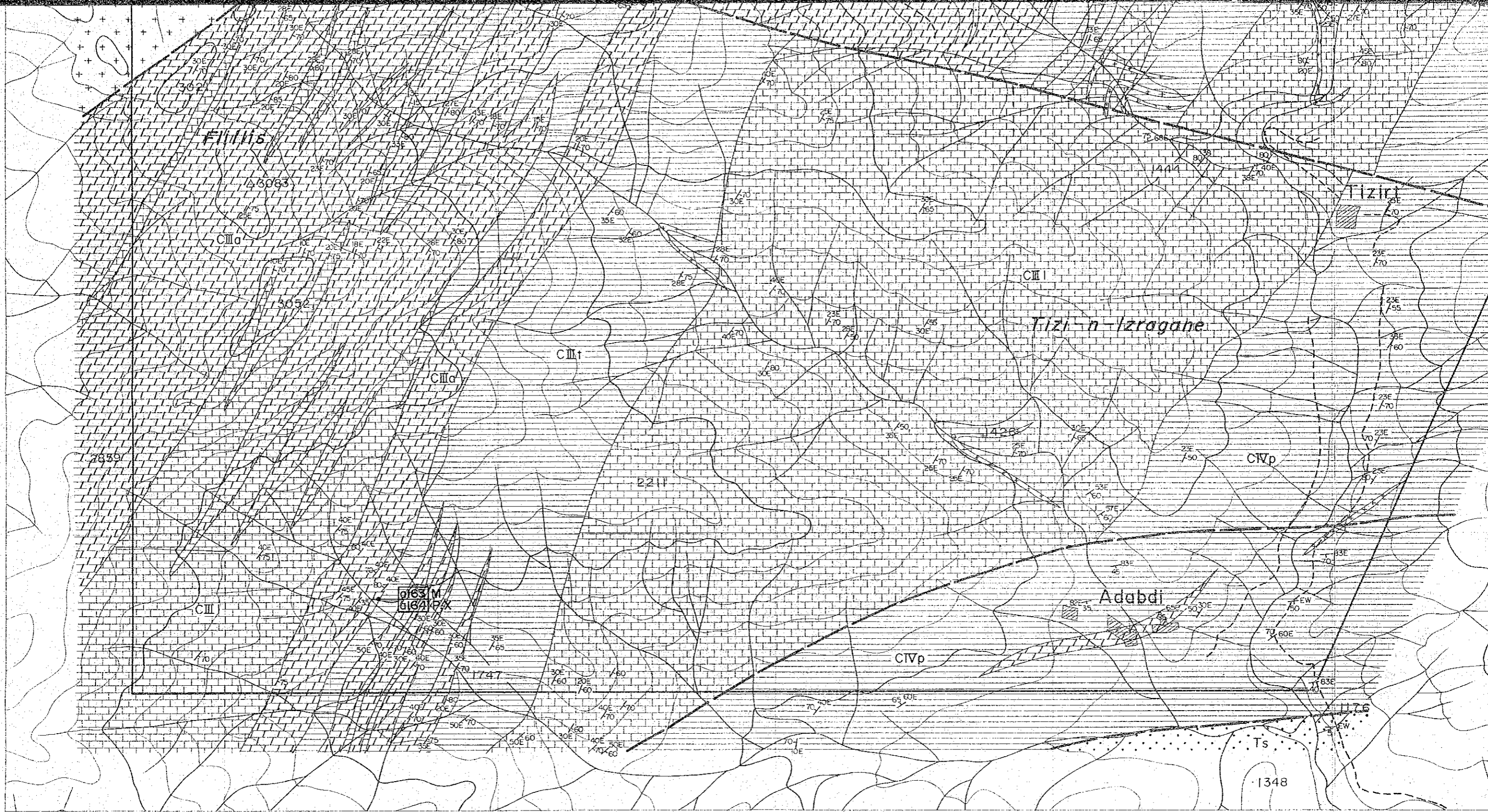






LEGEND

Triassic		Ts sandstone, siltstone
Ordovician~Cambrian		CIVp pelitic schist
		CIII l limestone
		CIIIa calcareous schist
		CIIIp pelitic schist
		CIIIm psammitic schist
CIII Formation		CIIIt green schist (tuff, tuff breccia)
		CIIp pelitic schist
CII Formation		CIIp pelitic schist
Intrusive rocks		Gr granite
		Po porphyrite
		Ap aplite
		skarn



Filhis

3063

CIIa

3052

CIIc

CIII

2211

CII

Tizi-n-Izragane

CIVp

CIII

0163 M
0164 PX

1747

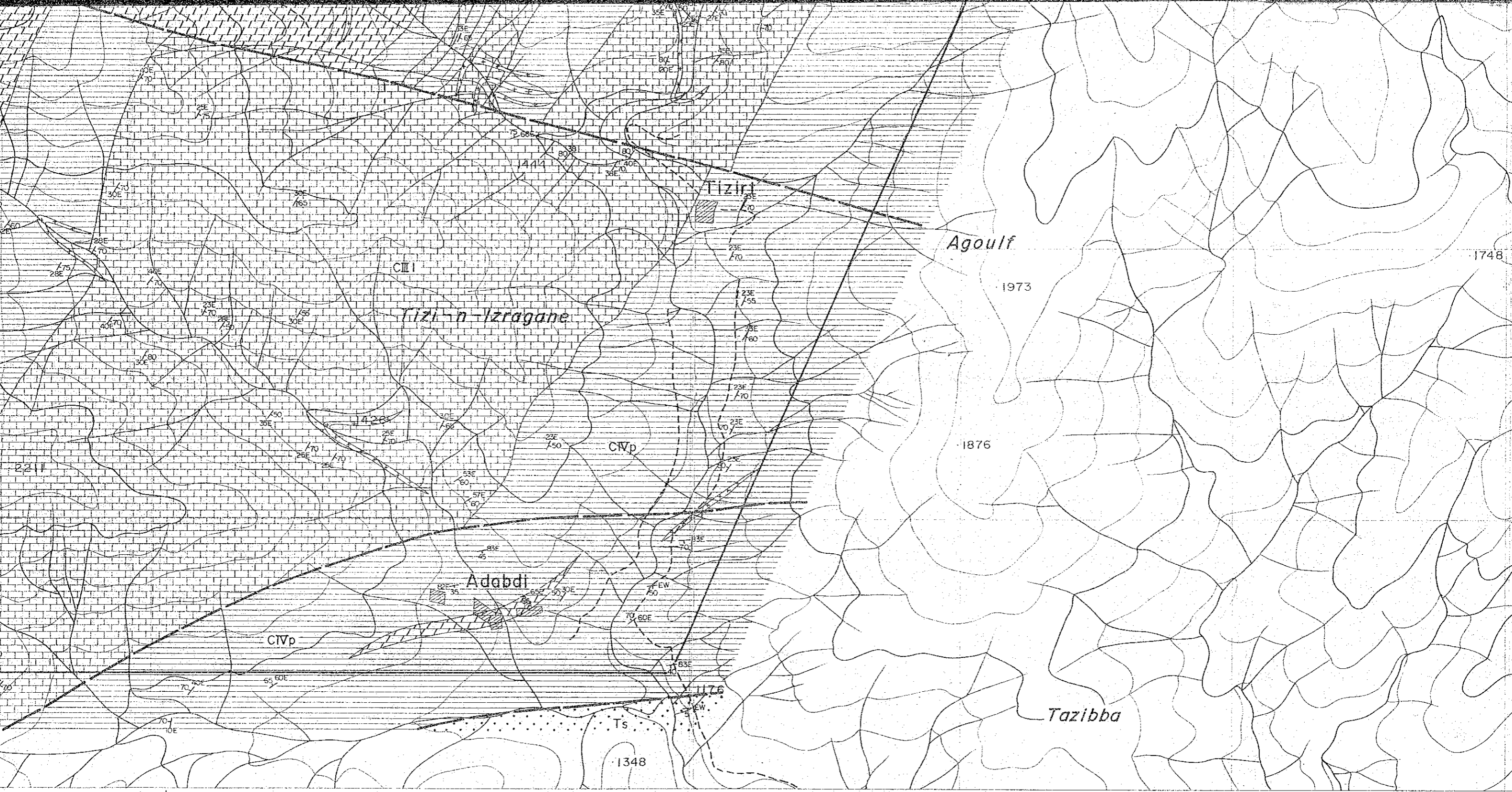
CIVp

Adabdi

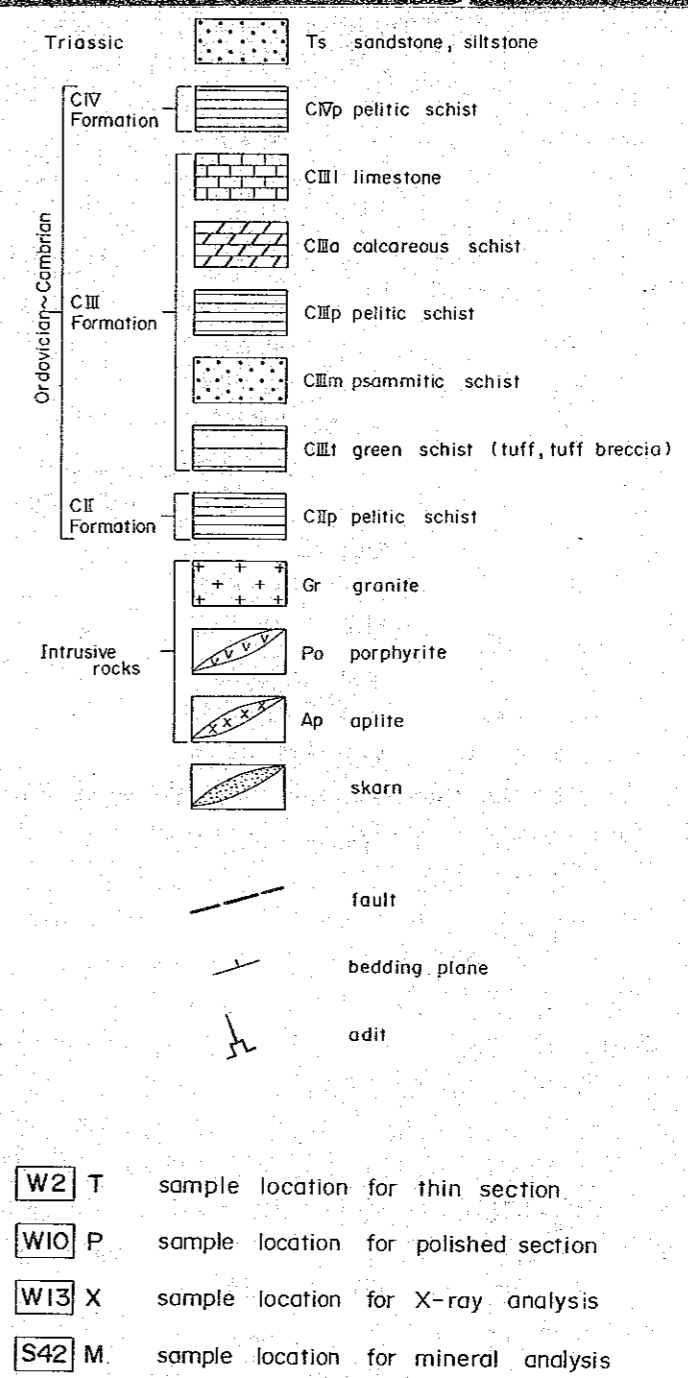
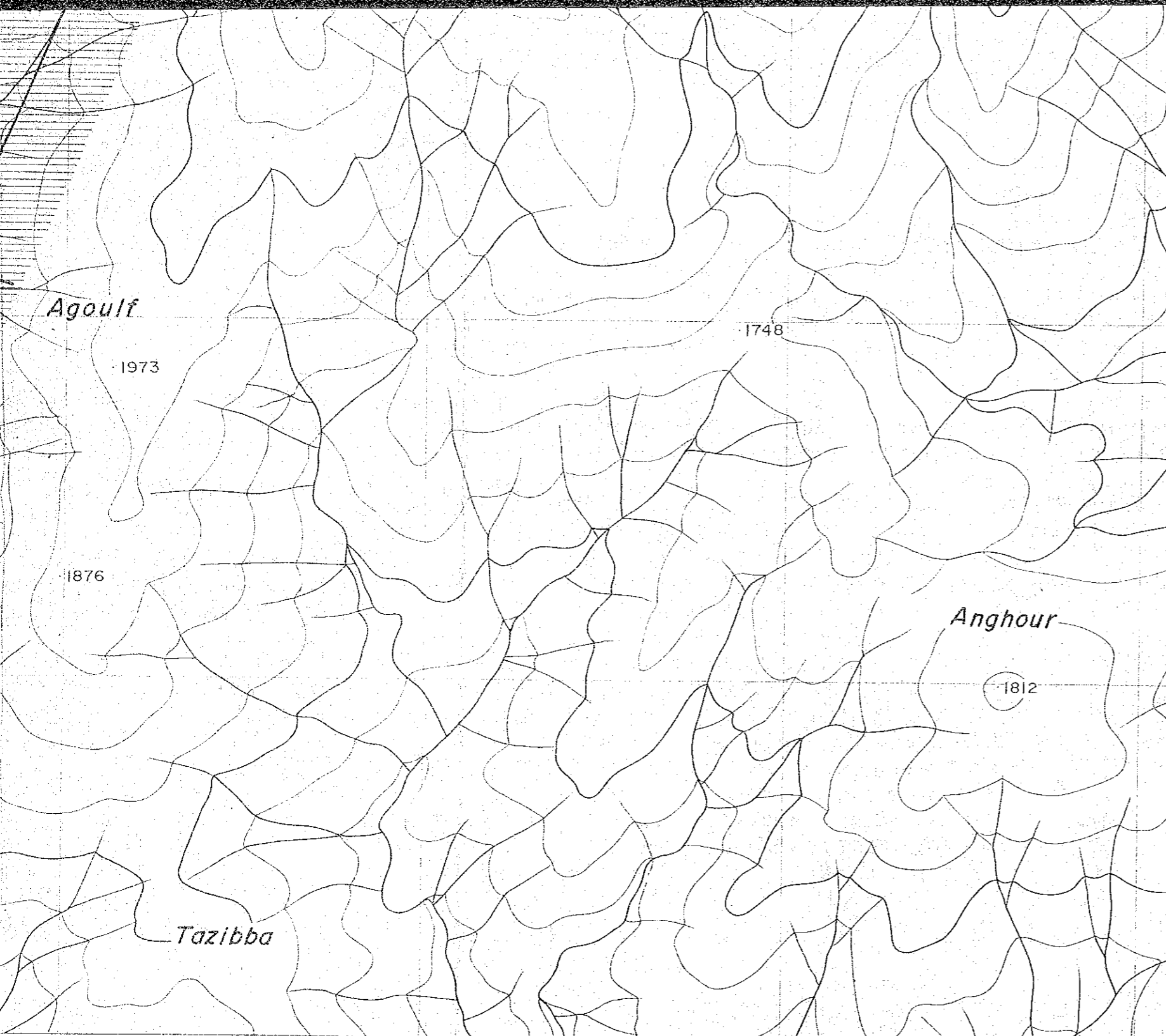
Ts

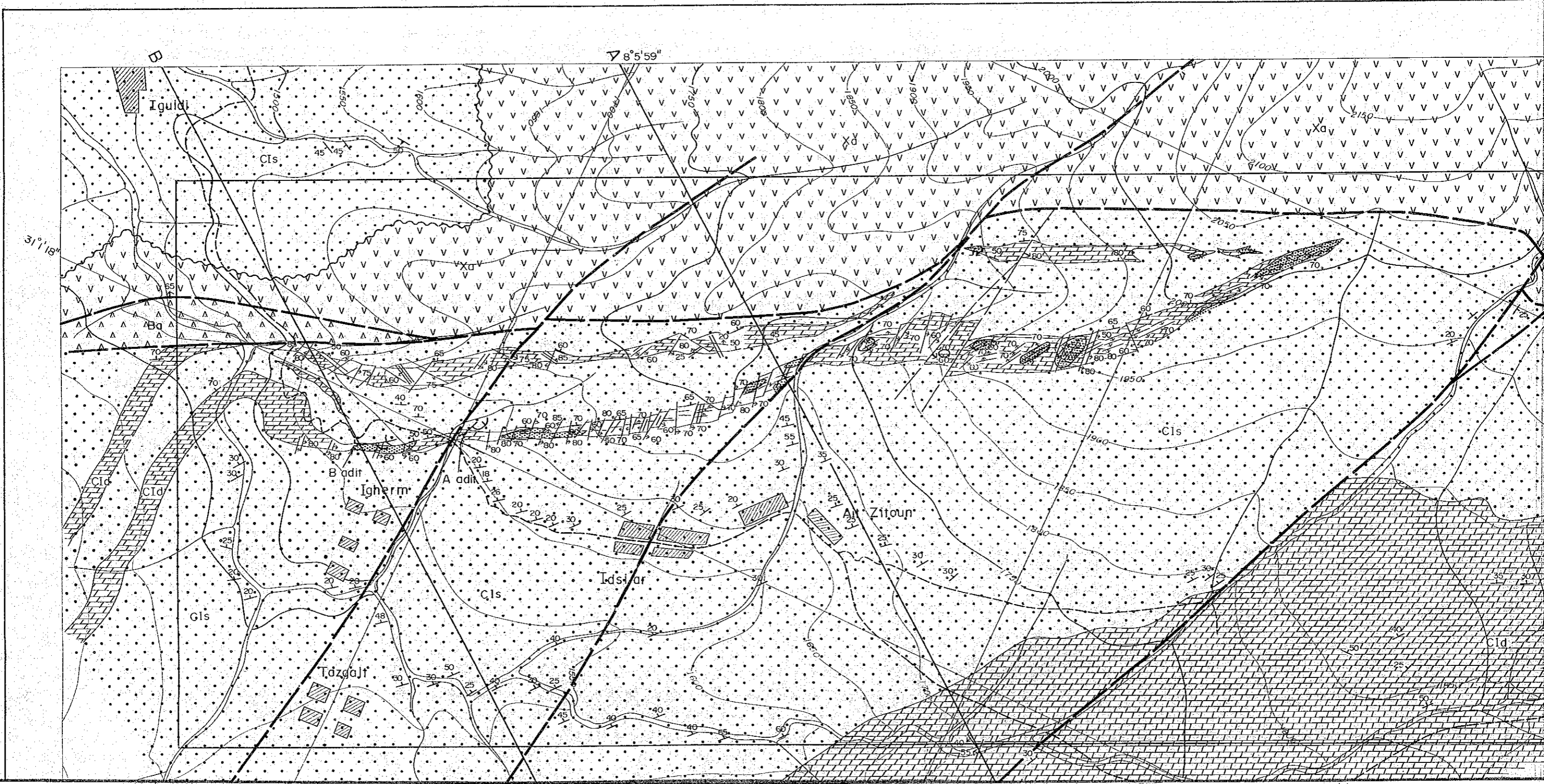
1348

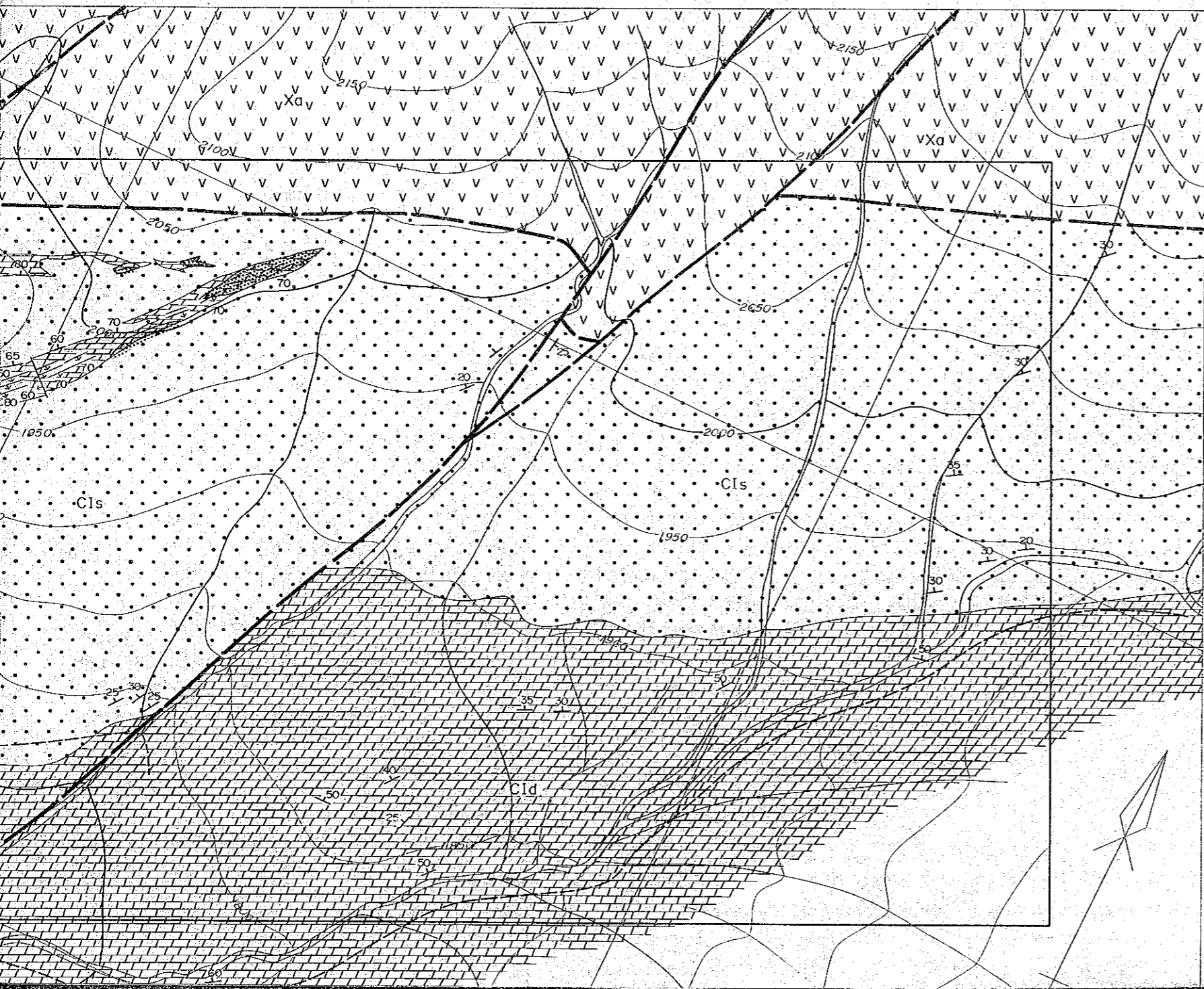
8°30'



8°30'





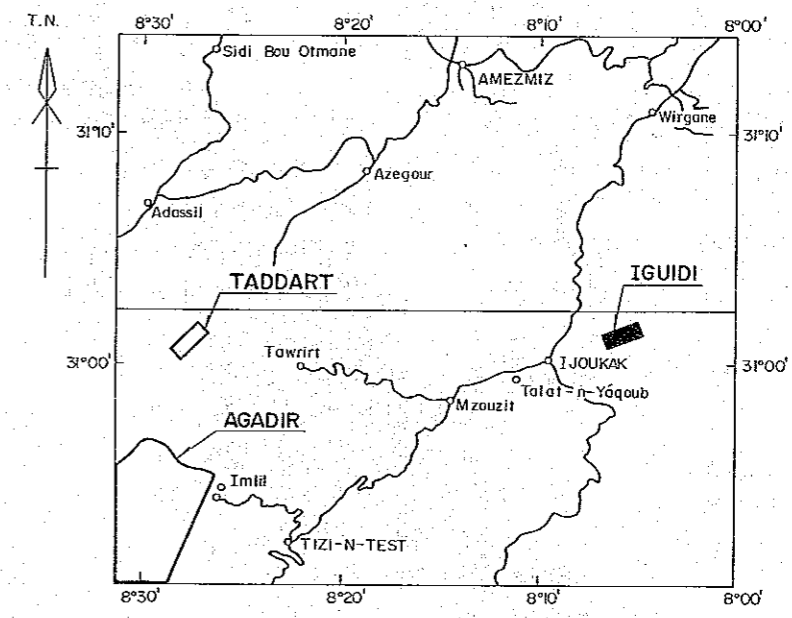


PL. I-2-1

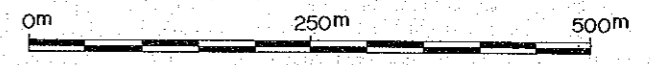
GEOLOGICAL SURVEY
OF
HAUT ATLAS OCCIDENTAL AREA, MOROCCO
(PHASE III)

国際協力事業団
15333
図書資料室蔵書

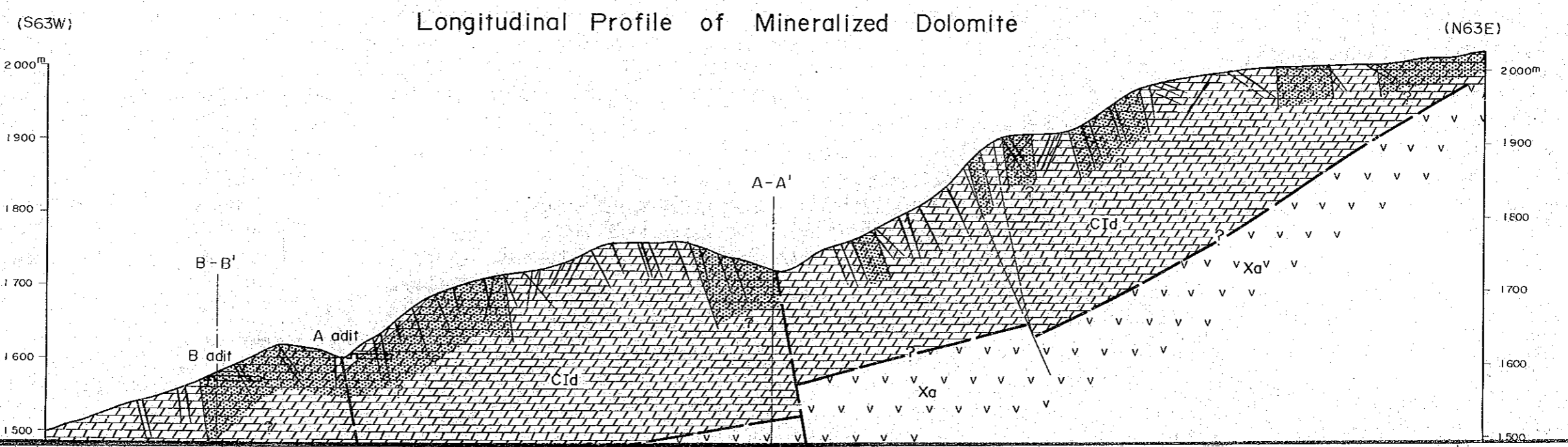
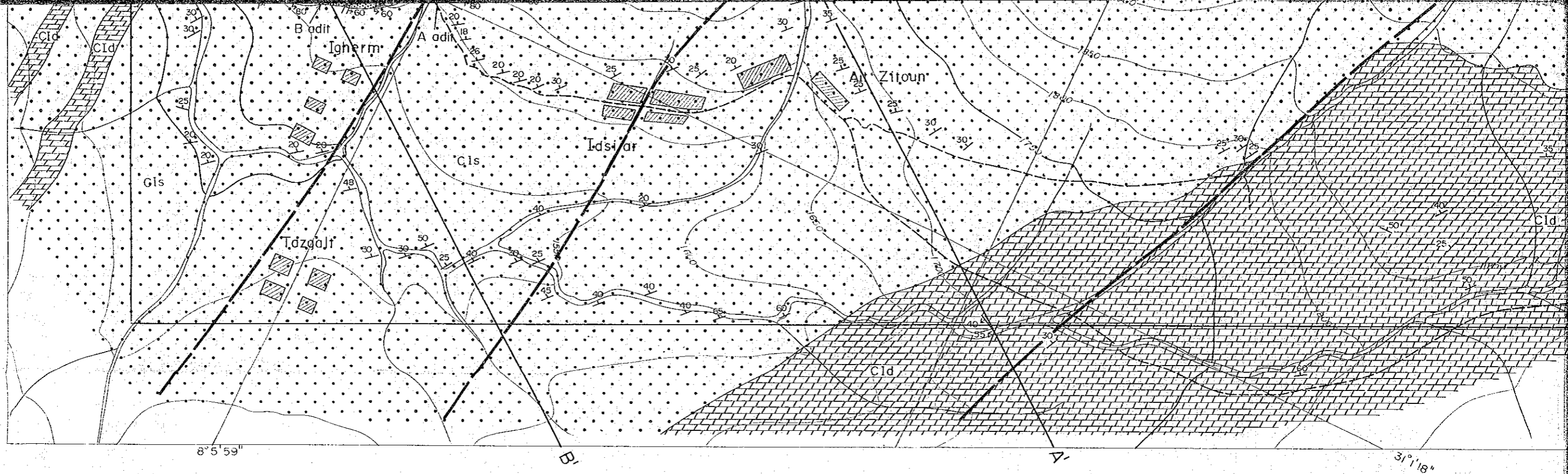
GEOLOGICAL MAP AND PROFILE
OF IGUIDI SECTOR

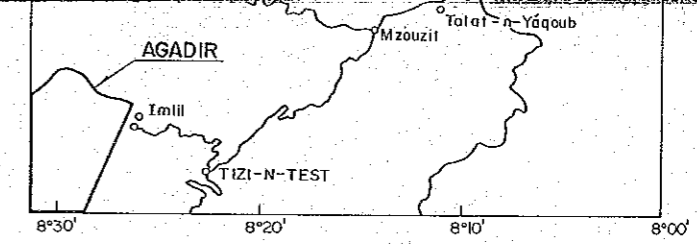
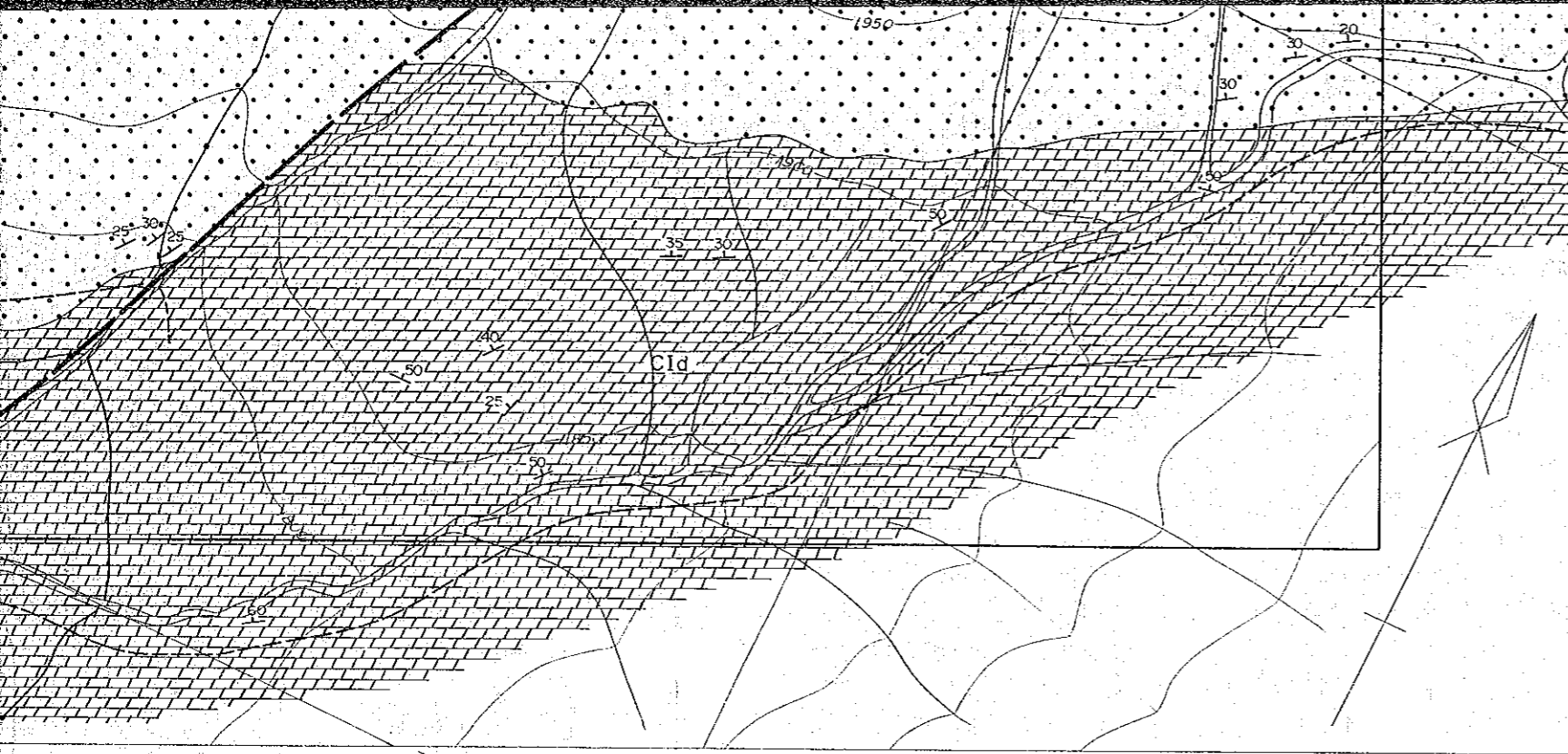


JAPAN INTERNATIONAL COOPERATION AGENCY
METAL MINING AGENCY OF JAPAN
JANUARY 1986
Prepared by MINDECO

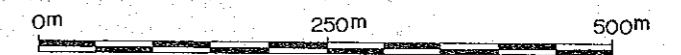


Scale 1 : 5,000



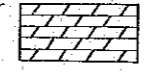

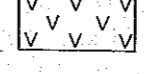
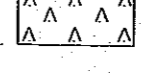
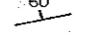
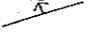





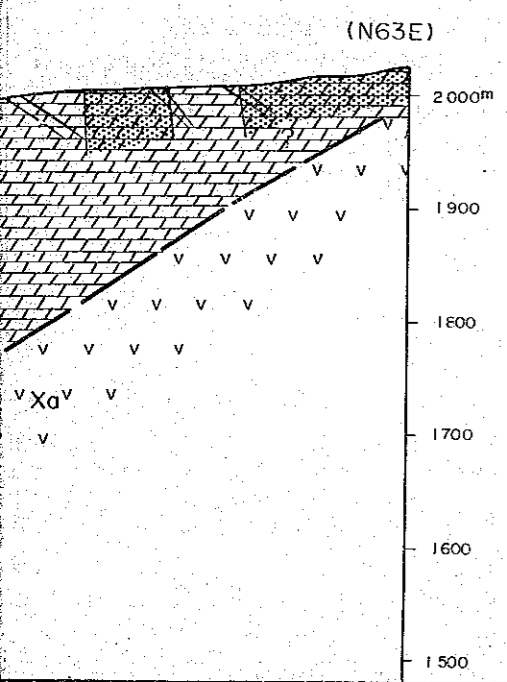
JAPAN INTERNATIONAL COOPERATION AGENCY
 METAL MINING AGENCY OF JAPAN
 JANUARY 1986
 Prepared by MINDECO



Scale 1 : 5,000

LEGEND

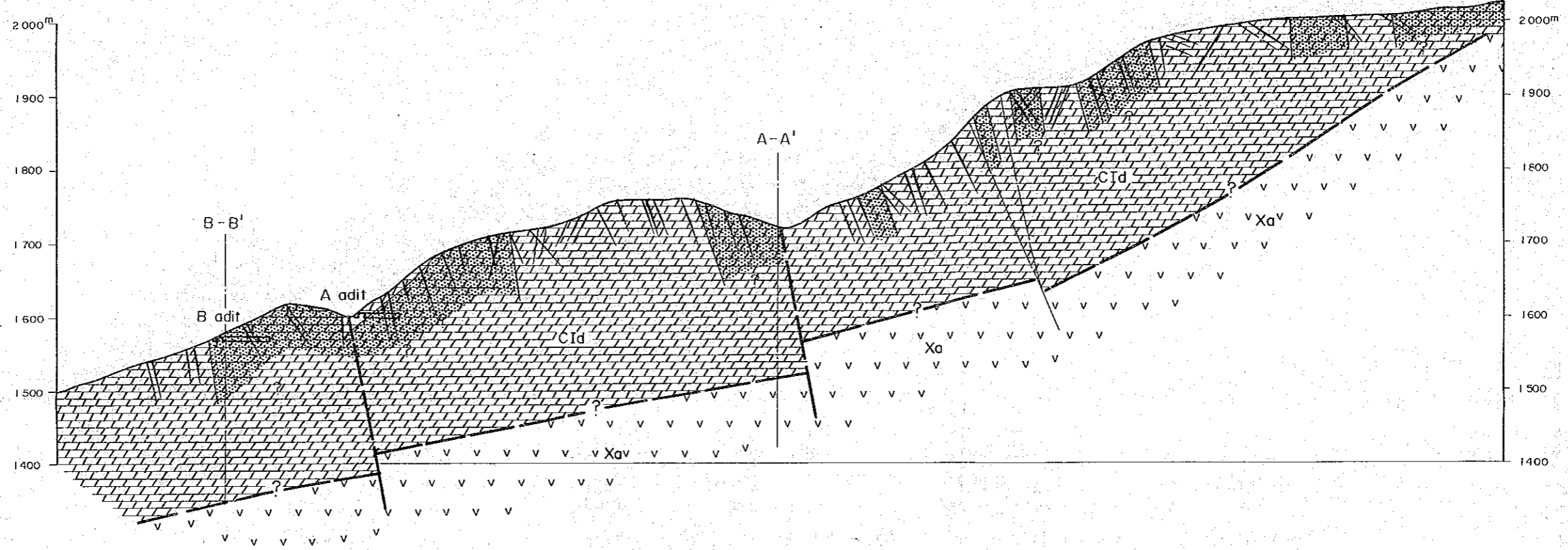
- | | | | |
|----------------|---|---|----------------------------|
| Ordovician |  | CId | dolomite |
| ~ Cambrian | |  | CIs |
| Pre - Cambrian |  | Xa | andsite, tuff, tuffbreccia |
| Intrusive rock | |  | Ba |
| |  | | bedding plane |
| |  | | fissure |
| |  | | fault |
| |  | | unconformity |
| |  | | stratigraphic boundary |



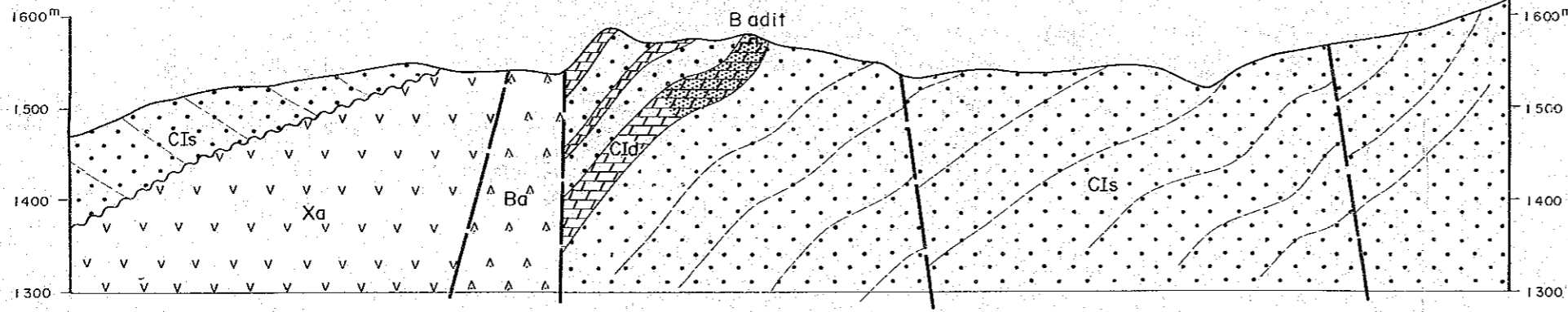
(S63W)

Longitudinal Profile of Mineralized Dolomite

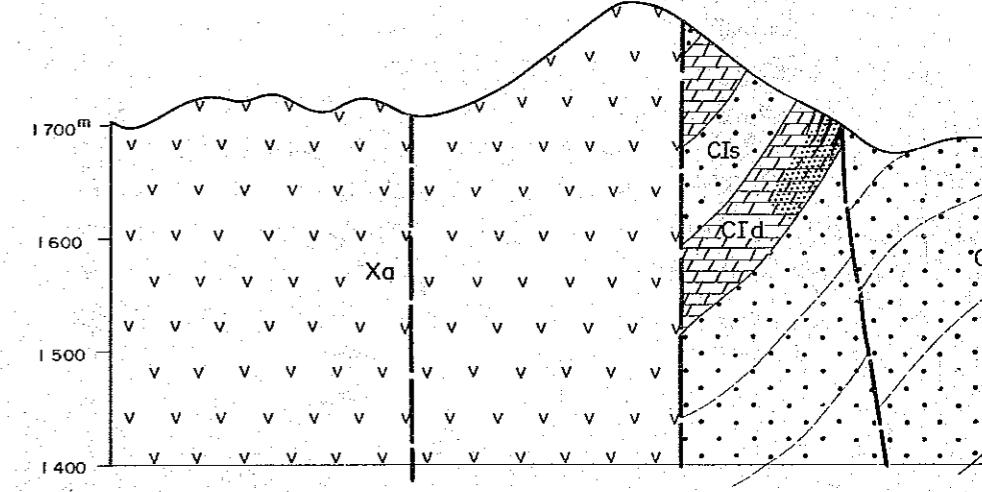
(N63E)

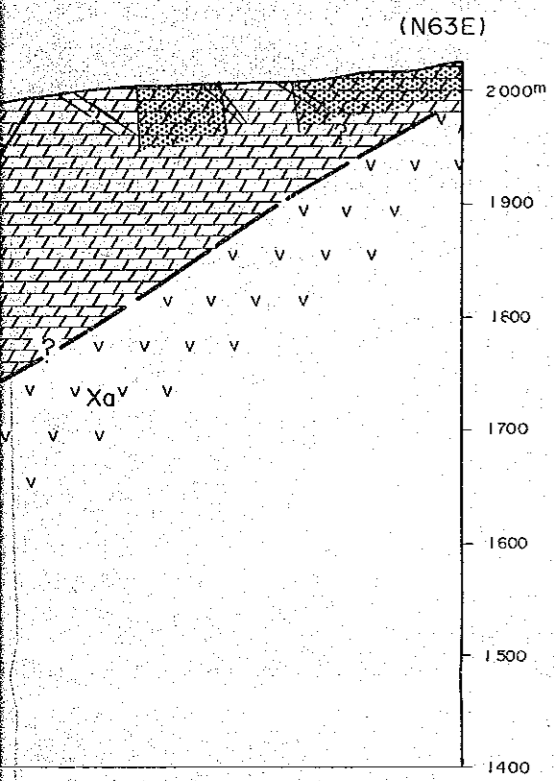


B - B' Section

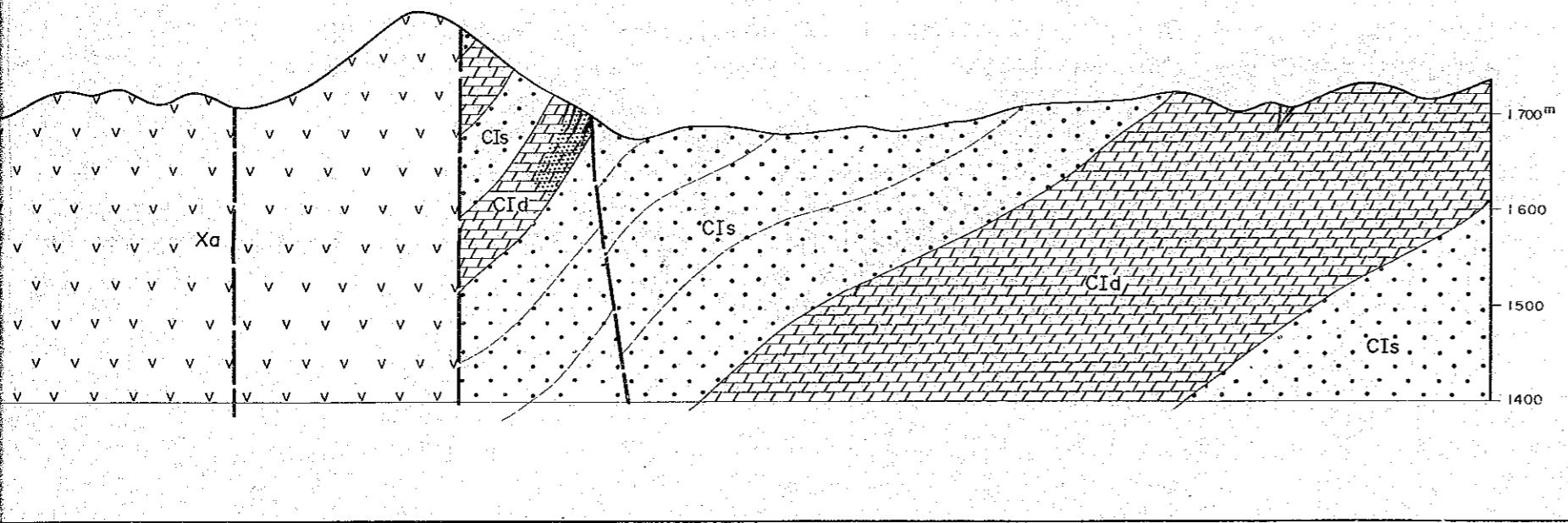


A - A' Section





A - A' Section



- ~ Cambrian { CIs sandstone siltstone
- Pre - Cambrian { Xa andsite, tuff, tuffbreccia
- Intrusive rock { Ba basalt
- 60 bedding plane
- 70 fissure
- fault
- unconformity
- stratigraphic boundary
- adit
- ore vein
- mineralized zone (Cu \geq 2 877 ppm)