

REPUBLIQUE POPULAIRE REVOLUTIONNAIRE DE GUINEE
MINISTERE DE L'AGRICULTURE, DES EAUX ET FORETS
ET DES FAPA

RAPPORT DE L'ETUDE DE FAISABILITE
SUR LE
PROJET DE DEVELOPPEMENT AGRICOLE A KANKAN

TOME IV

DONNEES ⅔

Août 1980

AGENCE JAPONAISE DE COOPERATION INTERNATIONALE

REPUBLIQUE POPULAIRE REVOLUTIONNAIRE DE GUINEE
MINISTERE DE L'AGRICULTURE, DES EAUX ET FORETS
ET DES FAPA

RAPPORT DE L'ETUDE DE FAISABILITE
SUR LE
PROJET DE DEVELOPPEMENT AGRICOLE A KANKAN

TOME IV

DONNEES 3/3

JICA LIBRARY



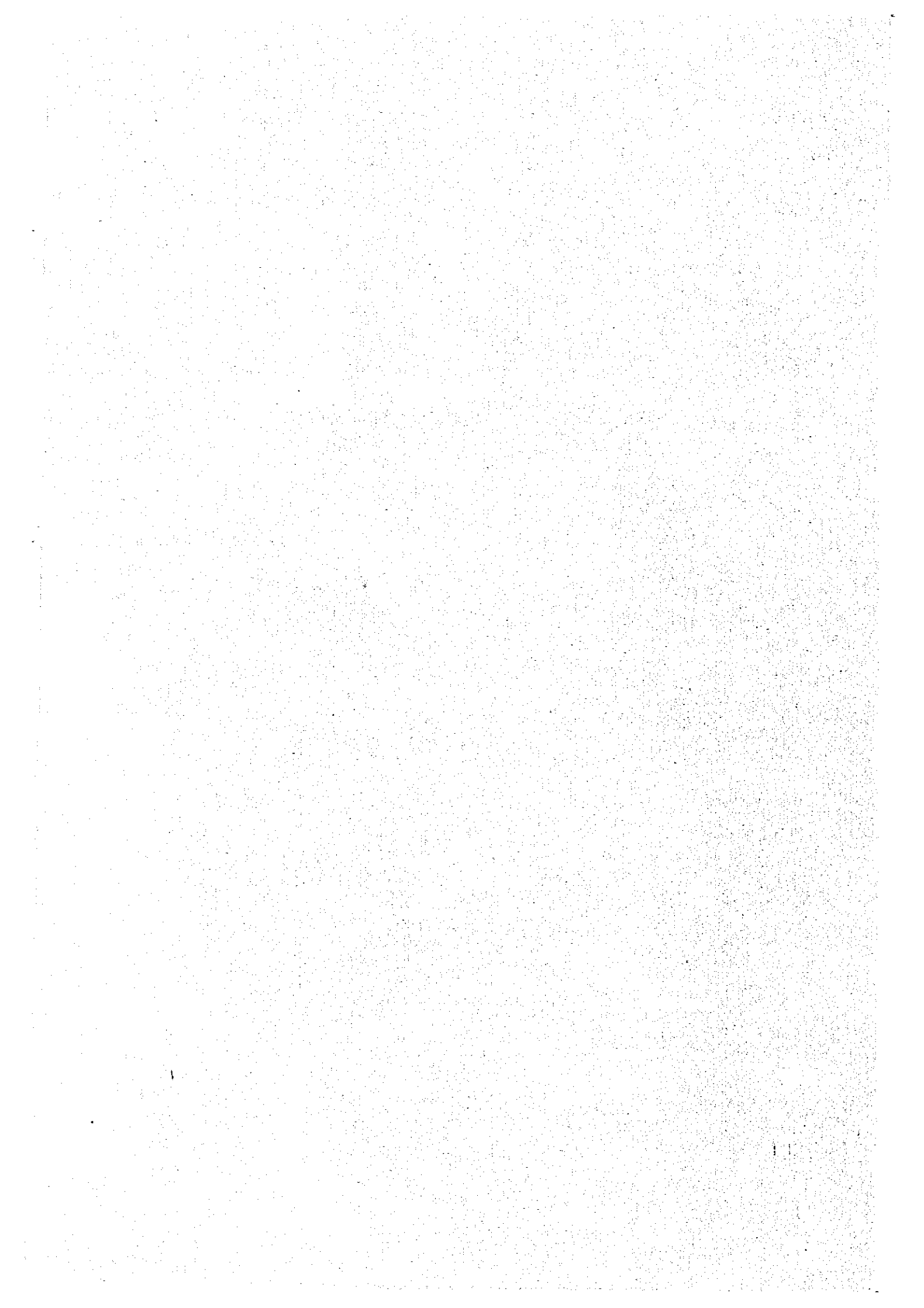
1029667L1J

Août 1980

AGENCE JAPONAISE DE COOPERATION INTERNATIONALE

国際協力事業団	
受入 月日 84.19.24	55(3)
登録No. 709900	4813
	1AET(4/5)

**Table IV-5 Temperature, Sunshine, Relative Humidity
and Piche Evaporation at Kissidougou
(1964 - 1978)**



METEOROLOGICAL RECORD

year (1964)

Station	Month Jan.				Observation Time		
Day	Atm. Temp.		Earth Temp.		Sunshine Hours Hr	Relative Humidity %	Piche Evaporation mm
	Max	Min	1ft deep	4ft deep			
	C°	C°	C°	C°			
1	30.4	10.2				56	3.0
2	29.2	10.2				54	3.7
3	28.2	10.2				52	3.8
4	27.8	14.1				55	2.8
5	32.9	12.6				53	3.7
6	33.0	14.4				60	3.3
7	32.7	11.8				57	3.8
8	32.8	12.0				53	3.9
9	34.0	10.8				50	4.1
10	34.4	10.7				49	4.3
11	35.1	9.2				49	4.6
12	35.5	8.5				49	5.0
13	34.3	7.9				50	3.7
14	35.5	10.2				51	4.5
15	34.7	9.8				51	4.2
16	34.2	13.1				62	2.9
17	34.8	11.7				61	3.6
18	33.9	15.0				65	2.9
19	32.9	16.1				71	2.6
20	33.4	16.2				67	2.2
21	34.4	15.1				61	3.7
22	36.1	10.9				50	4.6
23	35.5	9.9				47	5.3
24	35.8	9.3				48	4.7
25	33.3	11.2				58	3.9
26	33.4	12.0				62	3.1
27	33.2	14.8				57	4.0
28	33.4	14.3				49	3.8
29	30.3	17.2				58	3.7
30	34.8	11.5				47	5.1
31	35.4	10.7				44	4.7
Total	1035.3	372.2				1695	119.2
Mean	33.4	12.0				55	3.8

METEOROLOGICAL RECORD

year (1964)

Station	Month Feb				Observation Time		
Day	Atm. Temp.		Earth Temp.		Sunshine Hours Hr	Relative Humidity %	Piche Evaporation mm
	Max	Min	1ft deep	4ft deep			
	C°	C°	C°	C°			
1	34.3	10.5				47	5.2
2	34.6	8.4				43	4.8
3	35.9	9.0				44	5.8
4	36.9	10.5				42	5.7
5	35.8	10.8				43	5.1
6	34.9	13.0				58	3.5
7	34.8	15.0				59	3.5
8	34.9	14.4				51	4.4
9	36.2	15.2				50	3.5
10	35.8	14.0				48	2.7
11	34.9	13.0				45	2.2
12	36.8	9.8				47	5.1
13	35.9	9.3				43	6.3
14	36.2	13.5				43	6.1
15	35.4	15.2				48	4.5
16	36.1	12.0				44	5.8
17	37.5	14.2				45	5.9
18	38.9	10.5				39	7.1
19	38.3	13.8				49	6.3
20	38.4	16.0				49	5.4
21	36.9	20.3				59	4.2
22	37.9	18.5				57	4.3
23	35.4	19.1				60	4.5
24	35.9	19.0				57	4.8
25	37.2	20.7				54	5.2
26	37.8	18.6				54	4.9
27	34.8	20.1				65	3.7
28	36.6	19.9				54	2.6
29	35.8	21.6				58	1.9
30							
31							
Total	1050.8	425.9				1454	134.5
Mean	36.2	14.7				50	4.6

METEOROLOGICAL RECORD

year (1964)

Station		Month <u>Mar.</u>			Observation Time		
Day	Atm. Temp.		Earth Temp.		Sunshine Hours	Relative Humidity	Piche Evaporation
	Max C°	Min C°	1ft deep C°	4ft deep C°			
1	37.0	20.0				56	1.3
2	35.9	19.8				64	0.9
3	34.6	18.3				66	0.8
4	36.2	19.0				59	1.0
5	36.3	17.7				59	0.8
6	36.6	19.5				62	1.0
7	35.8	20.1				64	4.0
8	37.8	22.3				57	3.3
9	37.2	20.0				56	3.2
10	37.3	20.1				64	2.3
11	34.9	18.7				60	4.3
12	35.0	21.3				65	4.1
13	37.5	20.1				59	5.3
14	38.0	21.1				53	5.2
15	35.8	22.5				63	3.8
16	34.2	21.5				72	3.0
17	35.8	21.4				58	4.7
18	36.4	21.7				60	4.2
19	33.2	20.0				65	3.8
20	33.6	21.1				66	3.3
21	32.9	19.2				81	1.8
22	34.2	19.5				69	3.1
23	35.1	20.2				63	3.4
24	33.9	20.6				62	4.4
25	36.5	20.2				65	2.7
26	34.3	18.1				63	4.1
27	35.2	17.6				63	3.7
28	34.4	20.3				72	2.2
29	34.9	20.0				62	2.2
30	34.4	20.5				61	3.3
31	35.0	20.9				63	3.8
Total	1101.9	623.3				1951	95.0
Mean	35.5	20.1				63	3.1

METEOROLOGICAL RECORD

year (1964)

Station		Month Apr.			Observation Time		
Day	Atm. Temp.		Earth Temp.		Sunshine Hours	Relative Humidity	Piche Evaporation
	Max C°	Min C°	1ft deep C°	4ft deep C°			
1	34.9	20.9				72	2.5
2	33.6	20.2				70	2.1
3	31.7	20.7				75	1.4
4	32.5	21.3				70	2.0
5	34.9	21.8				65	2.6
6	33.1	17.2				44	4.3
7	36.0	18.8				47	4.3
8	35.1	20.7				56	3.1
9	34.3	21.0				64	2.7
10	34.0	22.2				59	3.1
11	34.9	18.3				61	3.5
12	34.9	19.8				61	2.5
13	35.1	21.2				61	2.4
14	35.9	20.1				60	3.2
15	35.1	19.0				55	3.3
16	36.8	20.0				57	3.3
17	35.0	20.5				58	2.7
18	36.2	21.3				56	3.2
19	34.1	22.0				59	2.6
20	32.8	20.3				80	1.4
21	30.1	21.0				82	1.2
22	34.1	20.5				70	2.3
23	34.9	21.1				66	2.2
24	32.5	23.0				63	2.8
25	33.7	20.3				74	2.0
26	32.1	21.3				78	1.6
27	34.0	21.0				72	1.9
28	33.0	19.3				70	2.1
29	31.4	20.1				68	2.0
30	33.5	21.3				77	2.2
31							
Total	1021.2	626.2				1950	76.5
Mean	34.0	20.9				65	2.6

METEOROLOGICAL RECORD

year (1964)

Station	Month <u>May</u>				Observation Time		
Day	Atm. Temp.		Earth Temp.		Sunshine Hours Hr	Relative Humidity %	Piche Evaporation mm
	Max C°	Min C°	1ft deep C°	4ft deep C°			
1	33.9	19.5				64	2.3
2	32.1	20.0				71	1.8
3	32.3	19.2				68	2.2
4	34.9	21.0				72	2.3
5	32.1	20.0				74	2.0
6	27.6	20.0				87	0.8
7	31.0	20.3				71	1.8
8	30.3	20.0				79	1.4
9	33.9	20.7				64	2.9
10	31.2	20.8				73	1.7
11	32.0	22.5				70	1.8
12	30.9	19.9				76	1.5
13	31.1	21.0				80	1.2
14	24.9	19.8				93	0.4
15	31.3	18.0				75	1.5
16	29.9	18.8				81	0.9
17	29.3	20.8				78	1.1
18	29.2	20.6				88	0.8
19	26.3	19.3				82	0.8
20	32.3	20.7				74	1.6
21	32.0	20.2				72	1.3
22	29.2	19.3				78	0.5
23	31.3	19.5				75	1.5
24	31.1	20.0				86	0.7
25	32.0	18.0				78	1.3
26	24.6	19.6				93	0.2
27	31.5	18.9				83	1.1
28	31.0	21.0				79	X
29	31.4	20.5				79	X
30	29.4	21.1				85	1.0
31	29.0	19.1				85	0.8
Total	949.0	620.1				2423	39.2
Mean	30.6	20.0				78	1.3

METEOROLOGICAL RECORD

year (1964)

Station	Month Jun.				Observation Time		
Day	Atm. Temp.		Earth Temp.		Sunshine Hours Hr	Relative Humidity %	Piche Evaporation mm
	Max	Min	1ft deep	4ft deep			
	C°	C°	C°	C°			
1	31.2	18.9				76	1.2
2	32.2	18.8				73	2.3
3	25.7	19.7				89	0.7
4	28.5	19.0				86	1.3
5	31.5	19.9				80	1.1
6	30.4	19.2				79	1.8
7	29.4	21.0				85	1.0
8	29.2	19.5				82	1.1
9	28.5	21.0				79	1.1
10	30.3	19.5				85	1.4
11	28.7	19.2				86	1.1
12	29.1	20.0				82	1.5
13	30.4	20.8				83	1.1
14	29.2	20.6				87	1.1
15	30.2	20.0				85	1.2
16	26.9	19.9				90	0.8
17	x	21.0				82	1.4
18	x	20.0				76	1.7
19	x	20.5				79	1.5
20	x	20.6				85	1.0
21	x	20.6				80	1.1
22	x	17.8				88	0.7
23	x	20.2				84	1.3
24	x	20.5				87	1.1
25	x	20.0				82	1.4
26	x	20.0				81	1.4
27	x	20.3				84	1.2
28	x	18.5				84	1.0
29	x	18.0				82	1.2
30	x	20.8				88	0.7
31							
Total	471.4	595.6				2487	36.5
Mean	29.5	19.9				83	1.2

METEOROLOGICAL RECORD

year (1964)

Station		Month Jul.				Observation Time	
Day	Atm. Temp.		Earth Temp.		Sunshine Hours Hr	Relative Humidity %	Piche Evaporation mm
	Max C°	Min C°	1ft deep C°	4ft deep C°			
1	30.0	20.0				82	1.3
2	27.5	18.8				84	1.0
3	28.0	20.4				81	1.5
4	30.0	20.2				85	1.2
5	29.5	19.4				83	1.0
6	27.3	19.0				90	0.7
7	26.8	19.0				84	1.2
8	27.5	20.0				78	1.3
9	28.5	19.2				82	1.1
10	28.3	20.3				83	1.6
11	27.0	20.2				82	1.5
12	24.2	19.7				87	1.1
13	25.7	19.0				87	1.1
14	28.8	19.0				83	1.2
15	30.1	20.0				83	1.4
16	27.9	18.2				83	1.6
17	29.0	20.2				85	1.4
18	27.0	19.8				89	1.0
19	26.9	20.3				85	1.4
20	27.8	20.6				82	1.3
21	27.4	20.2				84	1.6
22	26.2	20.5				86	1.0
23	27.0	19.6				86	0.9
24	26.8	19.3				84	1.2
25	25.8	19.0				84	0.8
26	26.0	19.3				89	1.1
27	24.0	19.0				92	0.7
28	27.5	20.0				87	1.0
29	25.4	20.0				94	0.5
30	29.0	19.3				87	1.1
31	28.7	19.5				83	0.9
Total	851.6	609.0				2634	35.7
Mean	27.5	19.6				85	1.2

METEOROLOGICAL RECORD

year (1964)

Station	Month <u>Aug</u>				Observation Time		
Day	Atm. Temp.		Earth Temp.		Sunshine Hours Hr	Relative Humidity %	Piche Evaporation mm
	Max	Min	1ft deep	4ft deep			
	C°	C°	C°	C°			
1	27.9	18.5				88	0.9
2	27.4	19.0				87	1.1
3	27.6	19.0				86	1.2
4	28.7	19.4				83	1.0
5	23.6	20.7				96	0.7
6	28.7	19.0				88	0.8
7	25.3	18.2				82	1.3
8	26.7	19.3				81	1.2
9	28.0	19.8				87	0.8
10	22.3	17.2				97	0.5
11	26.0	18.9				86	1.0
12	24.8	18.2				88	0.7
13	25.0	19.7				90	1.1
14	26.5	19.7				85	1.2
15	27.3	19.6				73	0.7
16	26.6	19.3				86	1.0
17	27.0	20.2				89	1.0
18	27.5	20.2				91	0.8
19	27.4	19.0				84	1.3
20	22.9	19.6				97	0.5
21	24.5	18.9				91	0.6
22	27.3	18.7				86	1.2
23	30.2	19.2				82	1.1
24	28.3	20.7				84	1.0
25	27.9	20.4				86	1.2
26	26.0	20.3				85	1.0
27	27.0	19.8				87	1.6
28	27.3	19.3				83	1.1
29	27.0	19.4				90	1.1
30	26.4	18.9				89	0.7
31	26.5	19.2				86	1.4
Total	823.6	529.3				2713	30.8
Mean	26.6	19.3				87	1.0

METEOROLOGICAL RECORD

year (1964)

Station		Month <i>Sep.</i>				Observation Time		
Day	Atm. Temp.		Earth Temp.		Sunshine Hours Hr	Relative Humidity %	Piche Evaporation mm	
	Max C°	Min C°	1ft deep C°	4ft deep C°				
1	27.0	19.4				85	1.1	
2	28.3	20.0				85	1.2	
3	23.0	19.7				92	0.6	
4	26.0	19.2				89	0.6	
5	27.7	19.4				85	0.7	
6	28.0	17.7				83	1.5	
7	29.5	17.1				87	1.6	
8	28.0	19.3				88	x	
9	28.3	19.4				83	x	
10	28.7	18.2				89	x	
11	29.3	18.5				81	1.3	
12	28.8	18.1				83	1.3	
13	27.2	18.5				89	0.5	
14	26.0	18.8				88	1.5	
15	24.4	19.4				90	1.1	
16	26.3	18.7				87	0.7	
17	27.5	20.0				90	1.1	
18	29.0	18.8				86	1.1	
19	26.0	20.0				90	0.9	
20	27.8	20.2				86	1.1	
21	27.8	19.9				85	1.2	
22	29.3	20.3				84	1.6	
23	29.4	19.8				88	0.4	
24	29.3	19.7				83	1.1	
25	29.8	19.6				81	1.7	
26	29.4	19.8				80	1.4	
27	29.0	19.0				80	1.7	
28	25.7	19.8				92	1.0	
29	27.3	19.6				85	1.0	
30	27.2	17.5				85	1.0	
31								
Total	832.0	575.4				2579	30.0	
Mean	27.2	19.2				87	1.1	

METEOROLOGICAL RECORD

year (1964)

Station	Month <i>Oct.</i>				Observation Time		
Day	Atm. Temp.		Earth Temp.		Sunshine Hours Hr	Relative Humidity %	Piche Evaporation mm
	Max	Min	1ft deep	4ft deep			
	C°	C°	C°	C°			
1	30.6	17.4				81	1.5
2	29.0	18.0				82	1.1
3	30.2	19.2				85	1.3
4	30.6	18.8				79	1.2
5	28.7	18.8				86	1.4
6	28.5	19.1				82	1.5
7	29.6	18.4				88	1.2
8	28.5	18.0				86	0.8
9	27.8	17.6				85	1.4
10	29.8	17.5				84	1.4
11	28.0	18.8				90	0.6
12	29.7	18.0				83	1.4
13	27.3	20.0				86	1.1
14	28.0	18.7				86	0.9
15	28.6	19.0				84	1.0
16	27.5	18.6				86	1.1
17	28.8	18.5				83	1.2
18	29.0	20.5				80	0.8
19	29.6	19.0				82	2.0
20	29.0	18.8				83	1.3
21	29.3	17.6				86	1.0
22	29.1	17.8				86	1.2
23	28.6	19.0				84	1.2
24	28.6	19.8				79	1.6
25	28.7	19.4				78	1.7
26	28.6	17.3				88	0.6
27	27.6	18.2				89	1.3
28	29.1	17.0				84	1.4
29	28.7	18.0				85	1.2
30	28.5	18.2				80	1.4
31	28.6	19.0				80	1.7
Total	862.2	574.0				2600	38.3
Mean	27.8	18.5				84	1.2

METEOROLOGICAL RECORD

year (1964)

Station	Month <u>Nov.</u>				Observation Time		
Day	Atm. Temp.		Earth Temp.		Sunshine Hours Hr	Relative Humidity %	Piche Evaporation mm
	Max	Min	1ft deep	4ft deep			
	C°	C°	C°	C°			
1	30.8	17.0				77	1.6
2	30.0	18.0				78	1.4
3	29.7	14.6				75	1.8
4	31.2	17.9				70	2.4
5	30.6	20.2				79	1.4
6	30.2	17.8				82	1.3
7	30.0	18.9				84	1.2
8	30.5	19.0				82	1.5
9	30.4	18.4				83	1.5
10	30.6	17.5				79	1.9
11	30.5	17.8				82	1.6
12	29.8	18.0				78	1.7
13	28.7	18.4				84	1.4
14	28.6	19.3				83	1.5
15	29.0	18.1				78	1.2
16	30.4	18.1				77	2.7
17	29.7	18.1				78	1.7
18	29.8	17.9				71	2.7
19	29.5	15.8				73	1.6
20	28.0	18.0				82	1.5
21	29.5	19.0				76	1.8
22	29.0	18.0				74	2.0
23	30.0	17.0				73	1.9
24	29.9	14.1				77	1.8
25	30.5	17.0				83	1.5
26	28.2	18.5				84	1.3
27	30.2	18.2				70	2.2
28	29.8	15.1				77	1.9
29	31.2	17.0				77	1.4
30	29.2	19.1				80	1.8
31							
Total	895.5	531.8				2346	57.2
Mean	29.9	17.7				78	1.7

METEOROLOGICAL RECORD

year (1964)

Station	Month Dec.				Observation Time		
Day	Atm. Temp.		Earth Temp.		Sunshine Hours Hr	Relative Humidity %	Piche Evaporation mm
	Max	Min	1ft deep	4ft deep			
	C°	C°	C°	C°			
1	25.5	18.0				88	1.1
2	29.4	17.1				77	1.5
3	30.3	17.6				74	1.9
4	29.8	19.0				77	2.0
5	29.8	17.1				78	2.1
6	31.0	18.2				69	2.3
7	29.8	14.8				67	2.7
8	29.2	12.5				68	2.3
9	30.4	14.0				79	1.7
10	27.1	17.3				84	1.1
11	30.1	18.1				80	1.8
12	27.0	18.5				85	0.7
13	25.0	19.8				90	0.4
14	25.4	18.3				87	0.9
15	27.4	18.0				87	1.1
16	30.2	14.9				72	1.9
17	30.9	18.6				74	1.9
18	28.6	20.2				79	1.4
19	29.9	18.3				79	1.3
20	33.3	18.3				73	1.8
21	28.5	16.6				74	2.1
22	29.9	18.3				85	1.1
23	30.5	18.5				85	1.0
24	28.3	18.0				81	1.1
25	29.6	15.4				79	1.5
26	29.1	16.5				78	1.5
27	30.0	14.2				80	1.4
28	29.2	16.0				86	1.9
29	29.8	16.3				77	1.5
30	30.6	16.0				74	1.4
31	30.6	16.0				71	2.8
Total	910.2	530.4				2440	49.2
Mean	29.4	17.1				79	1.6

METEOROLOGICAL RECORD

year (1965)

Station	Month <u>Jan</u>				Observation Time		
Day	Atm. Temp.		Earth Temp.		Sunshine Hours Hr	Relative Humidity %	Piche Evaporation mm
	Max C°	Min C°	1ft deep C°	4ft deep C°			
1	30.6	15.5				67	2.3
2	29.3	14.4				64	2.6
3	29.8	13.0				68	1.9
4	30.0	16.6				75	1.5
5	28.8	19.7				74	1.4
6	27.8	18.0				80	1.7
7	30.2	18.6				69	2.1
8	29.7	18.0				77	2.3
9	29.0	17.0				64	2.1
10	28.5	17.2				72	1.8
11	29.7	18.2				77	1.9
12	28.4	18.3				73	2.2
13	28.8	15.1				64	3.4
14	28.2	15.2				59	3.3
15	27.6	8.8				56	4.3
16	26.8	9.5				54	4.2
17	26.8	9.3				50	3.7
18	27.5	8.9				46	3.8
19	31.0	9.2				55	3.3
20	31.1	10.2				53	3.0
21	31.0	13.0				57	4.4
22	30.8	13.8				65	3.7
23	33.0	13.0				61	2.9
24	33.1	15.4				67	2.6
25	30.3	13.8				75	2.9
26	31.6	16.4				76	2.1
27	34.0	16.6				73	2.9
28	33.6	19.7				72	3.0
29	32.5	19.9				70	2.6
30	31.1	17.0				75	2.6
31	32.3	18.0				79	2.0
Total	932.9	467.3				2067	84.5
Mean	30.1	15.1				67	2.7

METEOROLOGICAL RECORD

year (1965)

Station		Month Feb				Observation Time		
Day	Atm. Temp.		Eorth Temp.		Sunshine Hours Hr	Relative Humidity %	Piche Evaporation mm	
	Max	Min	1ft deep	4ft deep				
	C°	C°	C°	C°				
1	32.4	16.8				74	2.0	
2	28.5	18.0				82	1.6	
3	32.6	17.0				63	2.4	
4	30.4	18.7				74	2.6	
5	30.6	18.0				75	1.3	
6	31.3	16.0				71	2.4	
7	31.8	16.5				76	1.9	
8	31.3	18.2				76	1.9	
9	33.5	19.8				60	2.3	
10	32.0	20.0				63	1.7	
11	33.4	18.2				58	2.6	
12	33.0	15.5				59	3.4	
13	33.0	14.2				59	3.4	
14	32.4	13.8				56	3.7	
15	32.5	14.7				60	3.7	
16	31.6	14.0				64	3.2	
17	33.0	15.0				64	3.0	
18	33.2	15.8				59	2.6	
19	33.5	16.5				62	3.5	
20	33.8	17.8				62	3.3	
21	34.2	18.8				64	3.2	
22	34.7	17.6				68	3.0	
23	32.9	17.5				66	1.6	
24	32.2	18.0				75	1.5	
25	32.7	19.5				72	2.8	
26	34.4	19.2				65	3.4	
27	33.6	18.8				69	2.9	
28	34.4	18.0				69	2.4	
29								
30								
31								
Total	912.9	481.9				1864	74.3	
Mean	32.6	17.2				67	2.6	

METEOROLOGICAL RECORD

year (1965)

Station	Month Mar.				Observation Time		
Day	Atm. Temp.		Earth Temp.		Sunshine Hours Hr	Relative Humidity %	Piche Evaporation mm
	Max	Min	1ft deep	4ft deep			
	C°	C°	C°	C°			
1	36.0	20.0				61	3.8
2	35.2	19.3				68	2.9
3	33.3	18.0				59	2.8
4	33.9	18.5				66	3.1
5	33.4	19.9				69	2.5
6	34.3	19.5				69	2.8
7	34.6	17.8				62	3.5
8	33.2	22.0				70	3.3
9	34.2	19.5				68	3.1
10	33.8	19.5				66	3.1
11	33.2	20.5				73	2.9
12	34.8	19.0				63	3.3
13	34.2	19.5				65	3.5
14	33.2	19.8				66	3.2
15	33.9	19.5				63	3.6
16	34.4	18.5				63	5.0
17	34.8	15.0				40	4.2
18	35.0	12.2				49	5.4
19	34.5	14.5				55	3.5
20	34.0	17.8				64	3.7
21	33.5	18.3				66	3.3
22	35.1	18.3				62	3.5
23	34.5	19.6				59	4.6
24	35.4	18.0				59	4.3
25	34.6	20.2				60	4.7
26	35.0	18.5				62	3.5
27	34.5	19.2				66	3.4
28	34.2	20.0				62	3.3
29	32.5	20.8				67	2.8
30	34.0	19.7				72	2.8
31	32.0	19.9				66	2.7
Total	1061.2	582.8				1962	113.8
Mean	34.2	18.8				63	3.7

METEOROLOGICAL RECORD

year (1965)

Station		Month <u>Apr.</u>				Observation Time		
Day	Atm. Temp.		Earth Temp.		Sunshine Hours Hr	Relative Humidity %	Piche Evaporation mm	
	Max	Min	1ft deep	4ft deep				
	C°	C°	C°	C°				
1	31.0	19.0				73	2.1	
2	31.5	19.5				72	2.9	
3	33.6	18.7				72	2.6	
4	29.0	19.4				72	2.5	
5	31.5	19.2				63	3.5	
6	32.2	22.2				69	2.5	
7	31.6	20.8				68	2.4	
8	32.0	17.8				60	3.0	
9	32.7	18.6				61	4.5	
10	34.1	18.8				56	2.9	
11	32.7	21.4				66	3.1	
12	30.8	22.0				74	3.1	
13	34.2	21.6				69	2.4	
14	31.7	20.8				74	2.3	
15	34.5	17.9				68	3.6	
16	34.4	20.0				62	3.1	
17	34.0	19.9				67	3.4	
18	34.5	21.6				68	4.2	
19	35.4	18.4				59	3.1	
20	33.3	21.7				68	3.3	
21	33.4	22.3				68	3.3	
22	31.0	21.3				80	1.6	
23	30.0	20.5				78	2.5	
24	35.0	21.0				61	3.5	
25	32.9	22.0				69	2.6	
26	34.0	21.0				70	2.8	
27	30.3	21.0				79	1.2	
28	31.8	19.9				74	2.8	
29	32.0	19.7				77	1.8	
30	32.9	22.9				73	2.2	
31								
Total	977.0	610.9				2071	84.8	
Mean	32.6	20.4				69	2.8	

METEOROLOGICAL RECORD

year (1965)

Station	Month <i>May</i>				Observation Time		
Day	Atm. Temp.		Earth Temp.		Sunshine Hours Hr	Relative Humidity %	Piche Evaporation mm
	Max	Min	1ft deep	4ft deep			
	C°	C°	C°	C°			
1	33.0	20.0				71	1.8
2	26.2	18.0				91	1.6
3	32.4	20.0				71	1.6
4	31.7	20.6				74	2.0
5	31.8	21.0				70	1.9
6	31.3	19.0				76	1.5
7	29.1	20.0				81	1.2
8	33.0	19.5				77	4.3
9	32.7	20.2				71	4.5
10	35.6	21.0				63	3.6
11	29.7	23.3				73	2.1
12	32.3	21.4				74	2.0
13	32.7	19.7				79	1.0
14	32.0	21.1				79	1.4
15	32.5	19.3				71	2.6
16	31.4	21.5				80	1.1
17	28.8	18.7				88	1.1
18	31.5	18.8				80	1.6
19	32.0	19.8				79	2.2
20	23.7	19.6				93	1.1
21	32.3	17.9				78	2.0
22	28.0	20.3				84	1.6
23	29.8	18.4				80	1.2
24	31.1	20.9				78	1.9
25	29.3	19.4				84	1.2
26	30.1	19.0				78	1.7
27	30.2	19.0				77	1.8
28	30.6	19.6				86	1.8
29	30.5	20.4				84	1.5
30	29.8	20.3				85	1.1
31	30.3	21.0				81	1.2
Total	957.4	618.7				2435	59.3
Mean	30.8	20.0				79	1.9

METEOROLOGICAL RECORD

year (1965)

Station	Month <i>Jun</i>				Observation Time		
Day	Atm. Temp.		Earth Temp.		Sunshine Hours Hr	Relative Humidity %	Piche Evaporation mm
	Max C°	Min C°	1ft deep C°	4ft deep C°			
1	30.2	20.5				82	0.8
2	29.7	19.6				84	0.6
3	30.8	17.6				75	1.5
4	31.0	18.5				81	1.6
5	30.0	18.8				80	1.7
6	29.6	21.0				78	1.0
7	31.4	21.6				80	1.4
8	27.5	19.8				83	1.6
9	29.6	19.5				85	1.1
10	30.8	18.2				81	1.5
11	26.8	20.0				84	1.0
12	30.4	19.8				79	2.0
13	30.2	19.0				80	1.3
14	23.3	18.9				96	0.7
15	27.0	19.7				88	1.1
16	29.2	19.5				76	1.9
17	30.5	20.7				78	1.6
18	31.8	20.5				80	1.9
19	28.9	19.1				80	1.3
20	27.2	21.0				87	0.9
21	29.0	20.0				86	1.1
22	27.9	21.4				85	1.1
23	29.0	18.3				87	1.8
24	28.6	20.4				81	1.3
25	28.6	20.6				83	1.4
26	29.5	21.0				82	1.3
27	25.6	20.0				94	0.8
28	29.5	20.2				81	1.4
29	29.5	20.5				82	1.3
30	27.4	20.8				82	1.4
31							
Total	870.5	601.5				2481	38.8
Mean	29.0	20.1				83	1.3

METEOROLOGICAL RECORD

year (1965)

Station	Month <u>Jul.</u>				Observation Time		
Day	Atm. Temp.		Earth Temp.		Sunshine Hours Hr	Relative Humidity %	Piche Evaporation mm
	Max C°	Min C°	1ft deep C°	4ft deep C°			
1	28.6	20.7				86	1.4
2	30.7	16.8				80	1.8
3	27.1	19.6				89	1.2
4	29.1	20.1				80	1.5
5	28.4	19.7				82	2.1
6	31.0	18.8				81	1.3
7	29.4	19.9				80	1.7
8	27.5	21.5				91	0.8
9	29.9	20.3				85	0.9
10	27.8	20.8				86	1.0
11	28.8	21.1				81	1.6
12	30.5	20.5				82	1.2
13	23.0	18.8				96	0.8
14	28.5	19.7				83	1.1
15	27.5	20.5				86	1.0
16	26.4	20.4				82	1.2
17	29.4	19.6				87	0.9
18	30.3	18.9				80	1.5
19	28.6	20.9				86	1.0
20	29.6	20.6				84	1.6
21	31.2	20.4				119	1.2
22	28.8	19.5				89	1.2
23	28.6	20.8				80	1.6
24	26.7	20.8				89	0.8
25	28.3	20.7				84	1.3
26	28.0	20.7				84	1.3
27	26.8	19.8				86	1.5
28	27.8	19.3				81	1.3
29	28.5	21.2				81	1.5
30	26.7	20.2				83	1.2
31	27.7	20.0				86	1.3
Total	881.2	622.6				2609	38.8
Mean	28.4	20.1				84	1.3

METEOROLOGICAL RECORD

year (1965)

Station		Month <u>Aug.</u>				Observation Time		
Day	Atm. Temp.		Earth Temp.		Sunshine Hours Hr	Relative Humidity %	Piche Evaporation mm	
	Max	Min	1ft deep	4ft deep				
	C°	C°	C°	C°				
1	30.6	21.5				82	1.5	
2	26.8	20.4				92	0.5	
3	26.9	20.0				81	1.2	
4	28.8	18.5				78	1.8	
5	28.8	20.4				78	1.6	
6	29.3	20.9				90	1.0	
7	28.8	20.7				86	1.3	
8	28.1	20.4				89	1.0	
9	28.1	20.5				88	0.8	
10	26.3	20.0				91	1.0	
11	27.2	20.4				81	1.6	
12	27.5	19.7				78	1.9	
13	27.1	20.3				78	1.8	
14	30.2	20.4				76	1.8	
15	27.7	19.4				86	0.8	
16	29.8	20.5				80	1.5	
17	28.6	20.0				91	0.9	
18	28.5	20.3				84	0.7	
19	30.6	20.9				86	1.0	
20	31.0	20.3				88	1.2	
21	29.0	19.8				90	0.9	
22	28.4	20.3				82	1.3	
23	26.7	20.3				85	1.0	
24	30.2	20.0				84	1.5	
25	30.2	20.2				80	1.5	
26	29.8	20.8				78	1.8	
27	29.0	21.0				84	1.1	
28	31.8	20.2				84	1.1	
29	26.7	19.8				88	1.0	
30	27.0	20.4				94	0.7	
31	26.8	19.8				87	1.0	
Total	887.3	628.1				2619	37.8	
Mean	28.5	20.3				84	1.2	

METEOROLOGICAL RECORD

year (1965)

Station	Month <i>Sep</i>				Observation Time		
Day	Atm. Temp.		Earth Temp.		Sunshine Hours Hr	Relative Humidity %	Piche Evaporation mm
	Max	Min	1ft deep	4ft deep			
	C°	C°	C°	C°			
1	27.4	20.0				90	0.8
2	26.4	20.4				90	0.7
3	26.0	19.8				92	1.3
4	26.4	19.9				85	1.4
5	27.0	20.5				80	1.4
6	29.2	19.5				76	1.7
7	31.2	19.8				77	1.6
8	26.2	21.0				92	0.6
9	29.7	19.8				79	1.5
10	26.6	20.9				94	0.8
11	28.1	19.6				84	1.2
12	31.0	20.1				83	1.6
13	26.7	21.0				90	0.3
14	25.8	19.4				96	1.1
15	29.2	20.8				91	1.3
16	29.3	20.6				85	1.1
17	29.3	20.8				88	1.4
18	26.6	20.8				93	0.9
19	29.8	20.3				79	1.1
20	29.2	20.0				86	1.1
21	29.0	18.8				85	0.9
22	29.2	20.9				81	1.2
23	30.8	21.0				84	1.5
24	31.5	21.0				88	1.2
25	26.3	20.4				93	0.8
26	29.6	20.6				90	0.9
27	27.8	19.6				93	1.0
28	32.0	18.9				80	1.3
29	31.4	18.4				81	1.8
30	29.1	19.6				90	0.7
31							
Total	871.8	604.2				2595	34.2
Mean	28.6	20.1				87	1.1

METEOROLOGICAL RECORD

year (1965)

Station	Month <u>Oct.</u>				Observation Time		
Day	Atm. Temp.		Earth Temp.		Sunshine Hours Hr	Relative Humidity %	Piche Evaporation mm
	Max	Min	1ft deep	4ft deep			
	C°	C°	C°	C°			
1	28.3	19.6				90	1.0
2	30.3	20.6				84	1.3
3	29.5	21.0				88	1.0
4	30.0	20.7				87	1.2
5	28.9	20.9				88	1.1
6	29.2	21.0				86	0.9
7	26.9	21.9				86	0.8
8	27.3	21.2				90	0.7
9	29.5	21.9				89	1.3
10	28.7	20.1				83	1.4
11	28.7	22.0				86	0.9
12	30.2	22.0				87	1.1
13	30.9	21.5				82	1.4
14	30.0	21.4				84	1.4
15	29.8	19.8				89	1.3
16	29.0	20.2				88	1.1
17	30.1	21.2				90	1.1
18	29.8	20.6				82	1.5
19	28.1	21.6				88	1.0
20	25.0	21.0				94	0.3
21	28.7	19.8				85	1.1
22	30.4	20.5				84	1.5
23	31.2	22.3				83	2.7
24	30.5	21.4				84	3.3
25	29.4	21.7				83	1.0
26	28.4	21.0				86	1.3
27	28.0	20.3				87	1.4
28	29.0	21.0				82	1.2
29	29.0	21.1				90	1.6
30	29.7	21.7				88	1.3
31	30.6	21.2				81	1.3
Total	905.1	652.2				2676	34.5
Mean	29.2	21.0				86	1.3

METEOROLOGICAL RECORD

year (1965)

Station	Month <u>Nov.</u>				Observation Time		
Day	Atm. Temp.		Earth Temp.		Sunshine Hours Hr	Relative Humidity %	Piche Evaporation mm
	Max C°	Min C°	1ft deep C°	4ft deep C°			
1	30.7	21.9				85	1.1
2	30.0	22.1				85	1.0
3	27.0	20.6				91	2.0
4	28.4	20.8				87	2.3
5	28.4	20.8				82	1.5
6	29.8	21.6				87	1.4
7	30.8	20.1				78	1.7
8	30.6	19.5				74	1.6
9	31.9	20.3				81	1.8
10	29.1	21.7				83	2.2
11	29.0	21.3				82	1.5
12	30.0	22.3				86	1.3
13	30.1	20.4				79	1.5
14	28.9	21.3				78	1.3
15	31.4	20.1				73	1.6
16	31.3	20.7				92	1.3
17	30.8	20.5				88	1.2
18	31.3	18.8				75	1.6
19	31.5	19.1				72	2.1
20	31.0	19.2				78	1.9
21	31.4	21.7				77	1.8
22	32.2	22.0				73	1.6
23	31.0	18.2				80	1.5
24	31.2	20.6				81	1.5
25	31.0	21.9				81	1.6
26	30.5	22.5				78	1.6
27	29.6	21.2				82	1.3
28	30.3	19.9				83	1.0
29	31.0	19.1				74	2.3
30	29.7	17.0				72	1.9
31							
Total	909.9	617.2				2417	48.0
Mean	30.3	20.6				81	1.6

METEOROLOGICAL RECORD

year (1965)

Station	Month <u>Dec.</u>				Observation Time		
Day	Atm. Temp.		Earth Temp.		Sunshine Hours Hr	Relative Humidity %	Piche Evaporation mm
	Max	Min	1ft deep	4ft deep			
	C°	C°	C°	C°			
1	30.5	x				69	2.1
2	30.0	x				81	2.1
3	31.4	x				68	2.1
4	32.8	x				64	3.2
5	31.3	x				68	2.4
6	31.4	x				71	2.2
7	30.4	14.4				71	2.4
8	32.0	18.0				69	2.6
9	31.6	18.5				75	2.3
10	31.3	17.6				73	3.2
11	31.2	13.7				64	2.8
12	32.0	14.0				61	x
13	31.5	x				61	x
14	32.1	x				59	x
15	32.4	x				63	x
16	32.1	x				61	x
17	32.2	x				60	x
18	31.6	x				61	x
19	32.4	x				58	x
20	31.3	x				54	x
21	30.1	x				56	x
22	31.5	x				54	x
23	31.9	x				58	x
24	31.6	x				63	x
25	31.9	x				63	x
26	31.8	x				64	x
27	32.5	x				57	x
28	33.0	x				55	x
29	32.8	x				53	x
30	33.0	x				54	x
31	32.5	x				49	x
Total	986.1	x				1937	x
Mean	31.8	x				62	x

METEOROLOGICAL RECORD

year (1966)

Station	Month <u>Jan.</u>				Observation Time		
Day	Atm. Temp.		Earth Temp.		Sunshine Hours Hr	Relative Humidity %	Piche Evaporation mm
	Max	Min	1ft deep	4ft deep			
	C°	C°	C°	C°			
1	32.2					48	
2	31.0					53	
3	33.2					54	
4	33.0					51	
5	34.0					50	
6	32.3					56	
7	33.8					52	
8	33.8					53	
9	32.0					55	
10	33.5					56	
11	32.5					54	
12	33.8					49	
13	32.7					50	
14	34.3					55	
15	35.3					57	
16	34.8					55	
17	34.3					66	
18	32.0					72	2.0
19	33.2					62	3.6
20	32.5					62	3.4
21	34.6					54	5.3
22	36.2					51	5.9
23	36.9					49	4.3
24	37.1					51	3.9
25	36.2					53	3.9
26	35.8					60	3.3
27	38.2					66	2.7
28	36.8					55	3.9
29	34.4					59	3.2
30	33.4					63	2.9
31	35.0					64	3.4
Total	1053.8					1134	51.7
Mean	34.0					56	3.7

METEOROLOGICAL RECORD

year (1966)

Station	Month <u>Feb</u>				Observation Time		
Day	Atm. Temp.		Earth Temp.		Sunshine Hours Hr	Relative Humidity %	Piche Evaporation mm
	Max C°	Min C°	1ft deep C°	4ft deep C°			
1	37.0					56	4.3
2	31.8					72	1.8
3	32.8					62	3.7
4	31.0					49	3.6
5	35.8					46	4.8
6	x					52	4.6
7	33.8					45	4.9
8	36.0					49	5.4
9	33.5					53	5.2
10	34.2					42	3.5
11	33.0					45	5.2
12	34.0					38	5.4
13	34.6					37	5.4
14	35.0					45	4.5
15	34.5					57	3.8
16	34.3					59	4.2
17	34.9					63	3.5
18	36.7					52	4.6
19	37.3					51	5.8
20	35.3					56	3.9
21	34.8					62	3.7
22	34.8					60	3.7
23	33.4					65	3.0
24	33.6					74	1.7
25	33.7					67	2.0
26	34.5					61	2.1
27	35.0					63	2.2
28	34.8					62	3.2
29							
30							
31							
Total	929.8					1543	109.7
Mean	34.4					55	3.9

METEOROLOGICAL RECORD

year (1966)

Station	Month <u>Mar.</u>				Observation Time		
Day	Atm. Temp.		Earth Temp.		Sunshine Hours Hr	Relative Humidity %	Piche Evaporation mm
	Max	Min	1ft deep	4ft deep			
	C°	C°	C°	C°			
1	34.1					64	3.7
2	34.5					58	5.5
3	35.1					55	5.5
4	35.3					43	5.2
5	34.4					53	3.4
6	35.2					55	4.3
7	35.7					57	3.8
8	35.3					50	3.5
9	35.7					54	4.0
10	36.0					58	3.5
11	35.0					62	4.6
12	34.9					55	5.1
13	34.5					57	5.6
14	35.2					65	2.6
15	33.6					71	2.9
16	34.0					72	4.1
17	32.8					69	4.2
18	33.0					59	2.9
19	33.0					70	2.4
20	32.2					72	2.4
21	33.2					64	3.2
22	32.3					72	1.9
23	33.0					72	2.1
24	32.2					74	2.0
25	31.4					76	1.8
26	32.0					77	2.7
27	32.5					78	2.1
28	33.2					66	3.0
29	33.4					67	2.8
30	31.7					70	2.4
31	34.4					65	3.6
Total	1048.8					1980	106.8
Mean	33.8					64	3.4

METEOROLOGICAL RECORD

year (1966)

Station	Month <u>Apr.</u>				Observation Time		
Day	Atm. Temp.		Earth Temp.		Sunshine Hours Hr	Relative Humidity %	Piche Evaporation mm
	Max	Min	1ft deep	4ft deep			
	C°	C°	C°	C°			
1	32.6					70	2.0
2	31.6					83	2.6
3	29.8					82	1.2
4	32.6					75	2.2
5	30.5					83	1.7
6	32.0					75	2.3
7	32.4					72	2.3
8	31.2					77	2.0
9	31.5					76	2.0
10	32.1					78	2.0
11	30.2					80	1.7
12	31.2					76	2.8
13	31.1					79	3.0
14	30.2					78	2.2
15	33.3					70	2.6
16	31.3					77	2.0
17	32.4					75	2.7
18	31.8					73	2.1
19	29.4					87	0.9
20	31.7					80	1.9
21	32.5					73	1.9
22	32.6					81	2.5
23	31.5					81	2.5
24	31.2					86	2.3
25	32.2					86	2.1
26	33.0					72	2.4
27	34.6					73	3.0
28	32.9					79	2.8
29	32.0					77	3.3
30	32.4					67	3.4
31							
Total	953.8					2313	68.4
Mean	31.8					77	2.3

METEOROLOGICAL RECORD

year (1966)

Station	Month <i>May</i>				Observation Time		
Day	Atm. Temp.		Earth Temp.		Sunshine Hours Hr	Relative Humidity %	Piche Evaporation mm
	Max C°	Min C°	1ft deep C°	4ft deep C°			
1	32.9					72	2.1
2	32.9					75	2.3
3	32.5					79	1.7
4	31.6					76	1.8
5	34.3					68	2.5
6	31.2					77	2.2
7	33.0					84	1.5
8	31.0					80	1.9
9	29.7					86	1.0
10	30.9					82	1.4
11	30.6					81	1.6
12	32.3					74	2.1
13	32.0					79	1.5
14	31.2					78	1.6
15	30.2					81	1.1
16	28.0					86	1.2
17	32.4					79	1.4
18	29.2					82	1.8
19	31.0					79	1.5
20	24.3					96	0.3
21	29.4					81	1.6
22	30.5					80	1.2
23	32.0					83	1.4
24	32.7					78	1.7
25	30.6					79	1.6
26	32.0					83	1.0
27	31.0					85	1.4
28	29.7					82	1.3
29	30.0					85	1.3
30	30.5					82	1.5
31	32.0					79	1.5
Total	962.6					2493	48.0
Mean	31.1					80	1.6

METEOROLOGICAL RECORD

year (1966)

Station	Month <i>Jun.</i>				Observation Time		
Day	Atm. Temp.		Earth Temp.		Sunshine Hours Hr	Relative Humidity %	Piche Evaporation mm
	Max	Min	1ft deep	4ft deep			
	C°	C°	C°	C°			
1						85	1.3
2						89	0.9
3						85	1.3
4						90	0.6
5						85	1.4
6						80	1.4
7						85	1.0
8						81	1.4
9						78	1.5
10						84	1.1
11						85	1.3
12						84	1.4
13						90	1.1
14						84	1.5
15						83	2.0
16						82	1.7
17						79	1.8
18						92	0.7
19						84	1.0
20						87	1.3
21						92	1.0
22						81	0.7
23						79	1.3
24						83	1.4
25						84	1.7
26						87	1.3
27						80	1.3
28						84	0.7
29						90	0.7
30						80	1.1
31							
Total						2530	36.9
Mean						84	1.2

METEOROLOGICAL RECORD

year (1966)

Station	Month <u>Jul.</u>				Observation Time		
Day	Atm. Temp.		Earth Temp.		Sunshine Hours Hr	Relative Humidity %	Piche Evaporation mm
	Max C°	Min C°	1ft deep C°	4ft deep C°			
1						81	1.9
2						82	1.1
3						88	0.7
4						83	1.5
5						78	1.8
6						83	1.1
7						80	1.5
8						77	1.0
9						87	1.2
10						79	1.0
11						85	1.8
12						82	1.1
13						86	1.3
14						81	1.4
15						83	1.2
16						81	1.5
17						82	1.6
18						79	1.2
19						85	0.9
20						82	1.5
21						84	1.1
22						84	0.9
23						78	1.8
24						83	1.5
25						89	0.9
26						86	0.9
27						78	1.4
28						87	0.8
29						92	0.9
30						82	0.2
31						88	1.4
Total						2578	38.7
Mean						83	1.3

METEOROLOGICAL RECORD

year (1966)

Station	Month <u>Aug.</u>				Observation Time		
Day	Atm. Temp.		Earth Temp.		Sunshine Hours Hr	Relative Humidity %	Piche Evaporation mm
	Max C°	Min C°	1ft deep C°	4ft deep C°			
1						80	1.0
2						85	1.0
3						80	1.1
4						83	1.2
5						94	0.7
6						81	1.5
7						78	1.0
8						88	0.9
9						84	0.6
10						90	0.6
11						93	0.8
12						92	0.8
13						81	1.3
14						83	1.4
15						86	1.0
16						77	1.3
17						95	1.7
18						92	0.8
19						87	0.9
20						87	0.9
21						86	1.0
22						72	1.4
23						88	0.7
24						89	1.3
25						85	1.3
26						78	1.4
27						83	1.1
28						83	1.3
29						82	1.4
30						87	1.1
31						84	1.4
Total						2631	33.9
Mean						85	1.1

METEOROLOGICAL RECORD

year (1966)

Station	Month <i>Sep.</i>				Observation Time		
Day	Atm. Temp.		Earth Temp.		Sunshine Hours Hr	Relative Humidity %	Piche Evaporation mm
	Max C°	Min C°	1ft deep C°	4ft deep C°			
1						83	1.2
2						86	1.0
3						85	1.0
4						80	0.9
5						78	1.8
6						87	1.0
7						89	0.7
8						81	1.7
9						84	0.8
10						82	1.1
11						87	1.0
12						80	1.4
13						84	1.3
14						84	1.0
15						82	1.1
16						85	1.1
17						84	1.0
18						89	0.8
19						87	1.0
20						83	0.8
21						90	0.7
22						85	0.9
23						93	0.6
24						86	0.6
25						85	0.9
26						89	1.1
27						89	0.8
28						81	1.2
29						87	1.1
30						85	0.7
31							
Total						2550	30.3
Mean						85	1.0

METEOROLOGICAL RECORD

year (1967)

Station	Month <u>Jan.</u>				Observation Time		
Day	Atm. Temp.		Earth Temp.		Sunshine Hours Hr	Relative Humidity %	Piche Evaporation mm
	Max	Min	1ft deep	4ft deep			
	C°	C°	C°	C°			
1						71	30
2						61	33
3						56	32
4						52	3.9
5						52	1.8
6						49	3.2
7						54	3.3
8						56	2.8
9						53	3.9
10						64	2.6
11						61	2.4
12						58	3.8
13						54	3.5
14						61	3.5
15						56	3.8
16						52	3.5
17						51	2.5
18						52	3.6
19						48	4.5
20						45	4.8
21						48	4.6
22						47	x
23						45	5.1
24						50	4.4
25						47	4.5
26						48	4.4
27						47	4.9
28						48	4.7
29						44	4.4
30						45	4.5
31						50	4.4
Total						1635	1128
Mean						53	3.6

METEOROLOGICAL RECORD

year (1967)

Station	Month Feb.				Observation Time		
Day	Atm. Temp.		Earth Temp.		Sunshine Hours Hr	Relative Humidity %	Piche Evaporation mm
	Max	Min	1ft deep	4ft deep			
	C°	C°	C°	C°			
1						55	3.6
2						63	3.2
3						62	3.7
4						54	4.1
5						50	4.7
6						50	4.1
7						60	3.8
8						62	3.0
9						60	3.6
10						57	4.1
11						58	3.9
12						60	3.8
13						56	4.0
14						55	4.0
15						46	5.9
16						45	5.2
17						44	5.1
18						52	4.6
19						64	3.8
20						60	4.0
21						48	5.0
22						57	4.0
23						61	4.0
24						70	4.0
25						71	3.8
26						58	3.6
27						65	3.3
28						56	4.3
29							
30							
31							
Total						1599	114.2
Mean						57	4.1

METEOROLOGICAL RECORD

year (1967)

Station		Month <u>Mar.</u>			Observation Time		
Day	Atm. Temp.		Earth Temp.		Sunshine Hours Hr	Relative Humidity %	Piche Evaporation mm
	Max C°	Min C°	1ft deep C°	4ft deep C°			
1						65	3.5
2						x	1.0
3						x	4.2
4						50	4.9
5						56	3.9
6						64	3.4
7						65	4.1
8						60	4.4
9						67	3.4
10						61	3.7
11						58	4.0
12						60	3.9
13						68	2.6
14						56	3.3
15						62	2.6
16						61	2.4
17						52	2.2
18						49	2.0
19						51	1.7
20						49	1.9
21						42	1.6
22						50	1.9
23						47	1.4
24						56	1.9
25						57	1.6
26						57	2.2
27						53	2.4
28						45	1.4
29						57	1.6
30						59	3.1
31						62	3.8
Total						1649	86.0
Mean						57	2.8

METEOROLOGICAL RECORD

year (1967)

Station	Month <u>Apr</u>				Observation Time		
Day	Atm. Temp.		Earth Temp.		Sunshine Hours Hr	Relative Humidity %	Piche Evaporation mm
	Max	Min	1ft deep	4ft deep			
	C°	C°	C°	C°			
1	x	20.0				56	4.5
2	x	21.0				71	2.0
3	x	21.0				67	3.4
4	x	20.0				55	4.8
5	39.0	x				61	2.5
6	x	20.0				65	4.8
7	36.5	x				61	3.7
8	33.0	x				69	3.0
9	35.0	x				68	2.2
10	33.0	20.0				72	1.8
11	35.2	x				68	2.1
12	35.5	20.5				65	4.0
13	33.0	20.0				74	2.4
14	33.5	20.1				73	2.3
15	x	21.0				76	2.3
16	x	20.0				69	3.5
17	35.0	20.5				70	3.4
18	x	22.5				71	2.7
19	34.5	22.0				66	3.2
20	x	21.0				64	4.2
21	x	22.0				81	1.5
22	33.5	21.5				68	2.8
23	33.5	21.0				74	2.2
24	x	20.5				73	1.7
25	x	21.6				72	2.4
26	x	19.5				78	1.7
27	33.0	20.0				74	2.4
28	30.5	22.0				78	1.8
29	x	20.0				76	1.8
30	x	20.5				70	2.7
31							
Total	513.7	518.2				2085	83.0
Mean	34.2	20.7				70	2.2

METEOROLOGICAL RECORD

year (1967)

Station		Month <u>May</u>				Observation Time		
Day	Atm. Temp.		Earth Temp.		Sunshine Hours Hr	Relative Humidity %	Piche Evaporation mm	
	Max	Min	1ft deep	4ft deep				
	C°	C°	C°	C°				
1	x	20.5				76	2.0	
2	x	20.5				70	2.4	
3	x	20.0				81	2.1	
4	x	20.5				82	1.1	
5	x	20.5				70	2.3	
6	x	21.5				76	1.7	
7	x	19.5				73	2.3	
8	34.0	22.0				72	2.0	
9	x	20.2				83	1.6	
10	x	19.5				78	2.2	
11	29.5	21.0				86	0.9	
12	x	19.0				71	2.3	
13	x	19.3				77	1.7	
14	x	21.1				73	2.0	
15	x	19.4				78	2.0	
16	x	21.4				75	2.0	
17	31.5	20.0				80	1.9	
18	x	20.7				75	1.3	
19	x	21.5				78	2.1	
20	31.0	21.5				76	1.4	
21	x	19.5				73	2.4	
22	x	20.0				75	1.4	
23	32.0	19.4				82	1.4	
24	25.5	20.5				89	0.3	
25	x	18.8				76	2.0	
26	31.0	21.5				77	1.5	
27	x	22.1				83	1.6	
28	x	20.3				82	2.8	
29	x	21.4				80	1.7	
30	x	21.0				77	2.2	
31	x	21.5				76	1.9	
Total	x	635.1				2390	56.5	
Mean	x	20.5				77	1.8	

METEOROLOGICAL RECORD

year (1967)

Station	Month Jun.				Observation Time		
Day	Atm. Temp.		Earth Temp.		Sunshine Hours Hr	Relative Humidity %	Piche Evaporation mm
	Max C°	Min C°	1ft deep C°	4ft deep C°			
1						75	
2						77	
3						81	
4						84	
5						76	
6						82	
7						77	
8						86	
9						78	
10						76	
11						84	
12						74	
13						82	
14						88	
15						87	
16						82	
17						82	
18						81	
19						81	
20						83	
21						85	
22						84	
23						84	
24						80	
25						84	
26						79	
27						90	
28						82	
29						86	
30						79	
31							
Total						2438	
Mean						81	

METEOROLOGICAL RECORD

year (1967)

Station	Month <i>Jul.</i>				Observation Time		
Day	Atm. Temp.		Earth Temp.		Sunshine Hours	Relative Humidity	Piche Evaporation
	Max	Min	1ft deep	4ft deep	Hr	%	mm
	C°	C°	C°	C°			
1						92	
2						81	
3						89	
4						85	
5						87	
6						84	
7						79	
8						89	
9						82	
10						81	
11						79	
12						83	
13						81	
14						90	
15						81	
16						81	
17						80	
18						87	
19						81	
20						84	
21						81	
22						85	
23						86	
24						90	
25						88	
26						81	
27						81	
28						87	
29						89	
30						86	
31						89	
Total						2619	
Mean						84	

METEOROLOGICAL RECORD

year (1967)

Station	Month <u>Aug.</u>				Observation Time		
Day	Atm. Temp.		Earth Temp.		Sunshine Hours Hr	Relative Humidity %	Piche Evaporation mm
	Max	Min	1ft deep	4ft deep			
	C°	C°	C°	C°			
1						86	
2						92	
3						82	
4						85	
5						87	
6						87	
7						84	
8						80	
9						85	
10						88	
11						84	
12						86	
13						93	
14						84	
15						82	
16						88	
17						88	
18						93	
19						87	
20						85	
21						85	
22						87	
23						86	
24						82	
25						91	
26						85	
27						82	
28						83	
29						94	
30						86	
31						88	
Total						2677	
Mean						86	

METEOROLOGICAL RECORD

year (1967)

Station		Month <i>Sep.</i>				Observation Time		
Day	Atm. Temp.		Earth Temp.		Sunshine Hours	Relative Humidity	Piche Evaporation	
	Max C°	Min C°	1ft deep C°	4ft deep C°	Hr	%	mm	
1						85		
2						86		
3						90		
4						83		
5						82		
6						83		
7						84		
8						85		
9						89		
10						86		
11						73		
12						80		
13						80		
14						88		
15						79		
16						95		
17						84		
18						81		
19						78		
20						87		
21						82		
22						83		
23						84		
24						84		
25						90		
26						80		
27						92		
28						76		
29						88		
30						91		
31								
Total						2526		
Mean						81		

METEOROLOGICAL RECORD

year (1967)

Station	Month <u>Oct.</u>				Observation Time		
Day	Atm. Temp.		Earth Temp.		Sunshine Hours Hr	Relative Humidity %	Piche Evaporation mm
	Max C°	Min C°	1ft deep C°	4ft deep C°			
1						89	
2						90	
3						89	
4						85	
5						87	
6						89	
7						87	
8						83	
9						83	
10						91	
11						90	
12						28	
13						86	
14						84	
15						84	
16						90	
17						91	
18						83	
19						86	
20						88	
21						95	
22						90	
23						88	
24						84	
25						83	
26						82	
27						88	
28						82	
29						90	
30						83	
31						85	
Total						2693	
Mean						87	

METEOROLOGICAL RECORD

year (1967)

Station	Month <u>Nov.</u>				Observation Time		
Day	Atm. Temp.		Earth Temp.		Sunshine Hours Hr	Relative Humidity %	Piche Evaporation mm
	Max	Min	1ft deep	4ft deep			
	C°	C°	C°	C°			
1						81	x
2						90	x
3						79	x
4						88	x
5						82	x
6						84	x
7						84	x
8						80	x
9						85	x
10						87	x
11						93	x
12						82	x
13						83	1.5
14						80	1.2
15						73	2.3
16						84	1.0
17						81	1.9
18						77	1.6
19						81	1.3
20						84	1.2
21						87	0.9
22						80	1.1
23						76	2.0
24						78	1.5
25						82	1.5
26						71	1.9
27						77	1.3
28						81	2.1
29						74	1.8
30						71	1.7
31							
Total						2435	x
Mean						81	x

METEOROLOGICAL RECORD

year (1967)

Station		Month Dec.			Observation Time		
Day	Atm. Temp.		Earth Temp.		Sunshine Hours	Relative Humidity	Piche Evaporation
	Max C°	Min C°	1ft deep C°	4ft deep C°			
1						78	1.4
2						75	1.8
3						82	1.5
4						73	1.8
5						70	2.3
6						66	2.2
7						65	2.5
8						60	1.3
9						75	1.0
10						64	0.7
11						68	0.5
12						57	0.8
13						62	1.0
14						75	0.6
15						68	1.4
16						58	1.3
17						62	1.7
18						72	0.3
19						63	1.2
20						57	1.0
21						54	0.8
22						53	1.7
23						52	1.5
24						63	0.4
25						56	2.9
26						57	2.7
27						61	2.3
28						66	2.5
29						56	2.9
30						61	3.2
31						68	2.4
Total						1997	49.6
Mean						64	1.6

METEOROLOGICAL RECORD

year (1968)

Station <i>Kissidougou</i>		Month <i>January</i>		Observation Time			
Day	Atm. Temp.		Earth Temp.		Sunshine Hours	Relative Humidity	Piche Evaporation
	Max C°	Min C°	1ft deep C°	4ft deep C°			
1						59	2.1
2						55	3.4
3						55	3.5
4						53	3.0
5						51	4.0
6						54	3.3
7						55	2.9
8						51	3.6
9						56	3.0
10						53	2.5
11						63	4.5
12						56	3.0
13						67	2.9
14						81	1.7
15						54	2.9
16						67	2.9
17						58	2.1
18						52	2.5
19						44	2.8
20						60	2.7
21						60	2.0
22						68	1.7
23						73	1.2
24						55	2.1
25						41	3.5
26						43	1.5
27						57	3.8
28						47	4.7
29						48	3.7
30						66	2.3
31						67	2.7
Total						1769	87.5
Mean						57	2.8

METEOROLOGICAL RECORD

year (1968)

Station Kissidougou		Month Feb		Observation Time			
Day	Atm. Temp.		Earth Temp.		Sunshine Hours Hr	Relative Humidity %	Piche Evaporation mm
	Max C°	Min C°	1ft deep C°	4ft deep C°			
1						68	2.8
2						67	2.7
3						64	3.8
4						73	3.1
5						60	2.9
6						65	4.1
7						73	2.4
8						82	2.1
9						87	1.1
10						74	3.4
11						56	3.4
12						59	2.1
13						64	3.5
14						65	4.2
15						57	3.8
16						64	3.8
17						68	1.7
18						69	3.3
19						71	2.2
20						68	2.3
21						69	2.1
22						68	1.6
23						77	1.9
24						71	1.3
25						93	1.2
26						71	2.1
27						58	4.9
28						65	4.1
29						62	1.6
30							
31							
Total						1988	81.5
Mean						69	2.8

METEOROLOGICAL RECORD

year (1968)

Station	Month				Observation Time		
Kissidou	Mar						
Day	Atm. Temp.		Earth Temp.		Sunshine Hours	Relative Humidity	Piche Evaporation
	Max	Min	1ft deep	4ft deep			
	C°	C°	C°	C°			
				Hr	%	mm	
1						64	1.9
2						65	2.5
3						67	3.9
4						74	2.1
5						72	3.2
6						67	2.8
7						72	3.4
8						68	3.1
9						69	3.2
10						63	3.3
11						61	4.3
12						67	2.0
13						58	5.3
14						48	5.8
15						66	3.3
16						61	4.2
17						69	4.4
18						72	2.6
19						64	3.9
20						67	3.6
21						70	3.5
22						78	2.0
23						68	4.0
24						66	3.5
25						76	2.5
26						85	1.9
27						79	1.8
28						80	2.4
29						66	2.7
30						73	3.2
31						72	3.5
Total						2127	100.8
Meon						69	3.3

METEOROLOGICAL RECORD

year (1968)

Station <u>Kissimmee</u>		Month <u>Apr</u>		Observation Time			
Day	Atm. Temp.		Earth Temp.		Sunshine Hours Hr	Relative Humidity %	Piche Evaporation mm
	Max C°	Min C°	1ft deep C°	4ft deep C°			
1						72	2.2
2						80	1.9
3						91	0.8
4						72	2.0
5						74	2.8
6						72	2.7
7						70	2.7
8						76	2.8
9						72	3.7
10						70	3.1
11						76	3.4
12						79	2.6
13						82	1.6
14						81	2.3
15						82	1.9
16						71	3.5
17						86	1.0
18						87	1.3
19						77	2.6
20						73	3.1
21						77	1.9
22						74	1.8
23						75	2.8
24						75	2.2
25						72	2.1
26						78	1.3
27						77	3.0
28						83	1.6
29						84	1.0
30						88	1.6
31							
Total						2326	713
Mean						76	2.4

METEOROLOGICAL RECORD

year (1968)

Station <i>Kissidougou</i>		Month <i>May</i>		Observation Time			
Day	Atm. Temp.		Earth Temp.		Sunshine Hours	Relative Humidity	Piche Evaporation
	Max C°	Min C°	1ft deep C°	4ft deep C°			
1						77	1.9
2						86	1.7
3						88	0.9
4						72	2.6
5						85	1.3
6						56	1.4
7						82	2.6
8						78	1.7
9						76	1.8
10						88	1.9
11						80	1.6
12						82	2.0
13						83	2.5
14						76	2.0
15						89	1.5
16						75	2.0
17						76	2.9
18						77	2.1
19						82	2.3
20						87	1.3
21						92	1.0
22						82	1.1
23						87	1.5
24						88	0.9
25						90	1.6
26						91	1.0
27						81	1.6
28						87	2.0
29						88	1.2
30						88	1.3
31						88	1.4
Total						2557	53.0
Mean						82	1.7

METEOROLOGICAL RECORD

year (1968)

Station	Month				Observation Time		
Kissidougou	Jan						
Day	Atm. Temp.		Earth Temp.		Sunshine Hours	Relative Humidity	Piche Evaporation
	Max C°	Min C°	1ft deep C°	4ft deep C°			
1						83	1.2
2						82	1.2
3						81	1.9
4						86	1.7
5						86	1.2
6						91	0.8
7						91	0.9
8						84	1.3
9						87	1.4
10						85	0.6
11						86	1.7
12						86	1.0
13						87	1.4
14						86	1.1
15						88	1.2
16						86	1.2
17						93	0.2
18						83	2.0
19						94	0.6
20						82	1.7
21						82	1.6
22						88	1.4
23						84	1.3
24						91	1.0
25						90	1.4
26						84	1.2
27						83	1.5
28						88	1.4
29						88	1.1
30						83	2.0
31							
Total						2588	38.2
Mean						86	1.3

METEOROLOGICAL RECORD

year (1968)

Station <u>Kissidougou</u>		Month <u>Jul</u>		Observation Time			
Day	Atm. Temp.		Earth Temp.		Sunshine Hours	Relative Humidity	Piche Evaporation
	Max C°	Min C°	1ft deep C°	4ft deep C°			
1						81	1.4
2						84	1.3
3						89	1.5
4						79	1.7
5						86	1.2
6						88	1.2
7						82	1.4
8						84	1.6
9						83	1.4
10						84	1.3
11						83	1.9
12						82	1.5
13						89	0.8
14						84	1.1
15						85	0.8
16						83	1.8
17						82	1.0
18						91	1.0
19						87	1.5
20						86	1.2
21						89	0.9
22						86	1.7
23						83	1.1
24						84	1.2
25						87	1.0
26						81	1.0
27						88	1.7
28						94	0.6
29						85	1.2
30						90	1.1
31						86	1.4
Total						2744	39.5
Mean						89	1.3

METEOROLOGICAL RECORD

year (1968)

Station <u>Kissimmee</u>		Month <u>Aug</u>		Observation Time			
Day	Atm. Temp.		Earth Temp.		Sunshine Hours	Relative Humidity	Piche Evaporation
	Max C°	Min C°	1ft deep C°	4ft deep C°			
1						88	0.7
2						90	0.8
3						88	1.6
4						82	1.5
5						88	1.4
6						88	0.9
7						88	1.1
8						86	1.0
9						83	1.2
10						85	1.3
11						87	0.9
12						81	0.9
13						92	1.4
14						84	1.3
15						81	1.5
16						81	1.5
17						80	1.5
18						85	1.2
19						95	0.9
20						90	1.1
21						88	1.1
22						78	1.7
23						95	0.8
24						59	1.0
25						86	1.3
26						92	0.8
27						85	1.4
28						84	1.2
29						94	0.8
30						88	0.8
31						88	1.4
Total						2688	36.0
Mean						87	1.2

METEOROLOGICAL RECORD

year (1968)

Station <u>Kissidougou</u> Month <u>Sep</u>		Observation Time					
Day	Atm. Temp.		Earth Temp.		Sunshine Hours Hr	Relative Humidity %	Piche Evaporation mm
	Max C°	Min C°	1ft deep C°	4ft deep C°			
1						94	1.5
2						86	1.0
3						89	1.5
4						83	1.0
5						85	1.5
6						90	1.5
7						86	1.5
8						86	1.1
9						86	1.0
10						85	1.3
11						86	1.2
12						85	2.7
13						87	1.0
14						95	1.1
15						88	0.9
16						88	1.8
17						84	1.5
18						88	1.5
19						88	1.2
20						85	1.3
21						85	1.9
22						90	1.0
23						80	1.8
24						82	1.8
25						82	1.2
26						85	1.7
27						89	0.9
28						85	1.5
29						83	1.6
30						88	1.3
31							
Total						2599	41.8
Mean						87	1.4

METEOROLOGICAL RECORD

year (1968)

Station <u>Kissimmee</u>		Month <u>Oct</u>		Observation Time			
Day	Atm. Temp.		Earth Temp.		Sunshine Hours Hr	Relative Humidity %	Piche Evaporation mm
	Max C°	Min C°	1ft deep C°	4ft deep C°			
1						79	2.2
2						91	1.1
3						88	1.0
4						86	1.5
5						90	0.9
6						89	0.9
7						83	1.2
8						85	1.8
9						87	1.2
10						86	1.0
11						93	0.7
12						90	1.5
13						85	1.6
14						85	1.1
15						89	1.4
16						87	1.5
17						86	1.3
18						93	1.5
19						86	1.2
20						85	1.0
21						83	1.2
22						92	1.0
23						92	0.4
24						86	1.4
25						81	1.4
26						84	1.7
27						82	1.2
28						86	1.0
29						89	1.7
30						80	1.8
31						83	1.4
Total						2681	39.9
Mean						86	1.3

METEOROLOGICAL RECORD

year (1968)

Station	Kissidougou Month Nov				Observation Time		
Day	Atm. Temp.		Earth Temp.		Sunshine Hours	Relative Humidity	Piche Evaporation
	Max C°	Min C°	1ft deep C°	4ft deep C°			
1						88	1.2
2						77	1.6
3						87	1.7
4						87	0.8
5						92	1.0
6						84	1.3
7						81	2.0
8						88	1.1
9						86	1.4
10						81	2.0
11						82	1.5
12						86	1.5
13						85	1.5
14						88	1.5
15						92	0.7
16						92	0.8
17						92	1.1
18						89	1.4
19						85	2.3
20						82	0.6
21						88	1.8
22						88	1.0
23						89	1.4
24						84	1.3
25						82	1.2
26						85	1.6
27						87	1.2
28						87	1.4
29						84	1.5
30						83	1.6
31							
Total						2580	41.0
Mean						86	1.4

METEOROLOGICAL RECORD

year (1968)

Station Kissidougou		Month. Dec.		Observation Time			
Day	Atm. Temp.		Earth Temp.		Sunshine Hours Hr	Relative Humidity %	Piche Evaporation mm
	Max C°	Min C°	1ft deep C°	4ft deep C°			
1						82	1.6
2						91	0.5
3						83	1.9
4						83	1.3
5						83	2.1
6						85	1.1
7						84	1.8
8						81	1.6
9						79	1.6
10						79	2.2
11						80	1.3
12						88	1.4
13						72	2.6
14						69	1.1
15						72	2.4
16						76	1.7
17						85	1.6
18						81	1.4
19						87	1.6
20						71	2.6
21						69	2.8
22						76	2.0
23						70	2.2
24						79	2.0
25						83	1.4
26						81	1.9
27						68	2.0
28						73	2.8
29						75	1.9
30						76	1.8
31						83	1.7
Total						2444	55.9
Mean						79	1.8

METEOROLOGICAL RECORD

year (1969)

Station <u>Kissidougou</u>		Month <u>Jan</u>		Observation Time			
Day	Atm. Temp.		Earth Temp.		Sunshine Hours	Relative Humidity	Piche Evaporation
	Max C°	Min C°	1ft deep C°	4ft deep C°			
1						78	2.2
2						74	1.5
3						74	2.5
4						74	2.2
5						78	1.8
6						74	2.6
7						76	2.4
8						75	2.3
9						81	1.7
10						62	3.5
11						81	1.8
12						76	2.3
13						84	1.4
14						79	2.0
15						82	1.7
16						82	1.5
17						67	2.8
18						64	1.8
19						61	4.1
20						62	3.0
21						64	3.0
22						68	3.0
23						69	2.7
24						66	1.5
25						68	3.6
26						71	2.5
27						61	3.7
28						63	2.5
29						66	3.0
30						63	3.5
31						51	4.5
Total						2194	78.6
Mean						71	2.5

METEOROLOGICAL RECORD

year (1969)

Station Kissidougou		Month Feb.			Observation Time		
Day	Atm. Temp.		Earth Temp.		Sunshine Hours	Relative Humidity	Piche Evaporation
	Max C°	Min C°	1ft deep C°	4ft deep C°			
1						54	4.7
2						49	5.0
3						55	4.5
4						54	3.3
5						56	4.2
6						56	4.3
7						58	4.3
8						62	4.0
9						63	3.6
10						75	2.5
11						80	2.3
12						77	2.9
13						81	2.3
14						74	3.5
15						59	3.0
16						64	4.2
17						65	3.3
18						72	2.2
19						65	4.6
20						66	4.1
21						65	3.6
22						71	3.7
23						68	3.7
24						73	3.8
25						68	2.7
26						68	3.3
27						71	3.9
28						67	3.1
29							
30							
31							
Total						1836	99.6
Mean						66	3.6

METEOROLOGICAL RECORD

year (1969)

Station Kissidougou		Month Mar.		Observation Time			
Day	Atm. Temp.		Earth Temp.		Sunshine Hours	Relative Humidity	Piche Evaporation
	Max C°	Min C°	1ft deep C°	4ft deep C°			
1						72	3.2
2						67	3.1
3						75	2.1
4						82	1.4
5						80	1.8
6						88	1.5
7						75	1.6
8						77	2.7
9						66	3.2
10						68	2.3
11						68	3.5
12						78	3.0
13						66	2.5
14						65	2.5
15						70	3.0
16						75	2.0
17						61	3.5
18						62	3.0
19						75	2.5
20						69	2.5
21						73	3.0
22						83	4.5
23						75	2.2
24						92	1.8
25						80	0.7
26						76	2.3
27						73	2.5
28						74	2.1
29						74	2.4
30						79	x
31						73	x
Total						2293	72.4
Mean						74	2.5

METEOROLOGICAL RECORD

year (1969)

Station <u>Kissidougou</u>		Month <u>Apr.</u>		Observation Time			
Day	Atm. Temp.		Earth Temp.		Sunshine Hours	Relative Humidity	Piche Evaporation
	Max C°	Min C°	1ft deep C°	4ft deep C°			
1						77	
2						78	
3						70	
4						86	
5						73	
6						82	
7						77	
8						77	
9						85	
10						76	
11						81	
12						79	
13						72	
14						65	
15						62	
16						72	
17						80	
18						72	
19						70	
20						67	
21						73	
22						81	
23						75	
24						75	
25						83	
26						85	
27						84	
28						83	
29						83	
30						74	
31							
Total						2303	
Mean						77	

METEOROLOGICAL RECORD

year (1969)

Station <u>Kissidougou</u>		Month <u>May</u>		Observation Time			
Day	Atm. Temp.		Earth Temp.		Sunshine Hours Hr	Relative Humidity %	Piche Evaporation mm
	Max C°	Min C°	1ft deep C°	4ft deep C°			
1						76	2.2
2						75	2.4
3						83	1.2
4						76	2.1
5						76	2.1
6						86	1.7
7						84	1.1
8						77	2.8
9						76	1.8
10						76	1.3
11						78	1.7
12						79	1.9
13						79	1.9
14						77	2.2
15						77	1.9
16						77	2.1
17						87	1.3
18						85	1.4
19						77	1.8
20						82	1.1
21						85	1.3
22						81	1.7
23						75	2.3
24						79	1.7
25						82	1.3
26						81	2.0
27						83	1.5
28						83	1.2
29						90	1.0
30						83	1.8
31						85	1.7
Total						2506	53.5
Mean						81	1.7

METEOROLOGICAL RECORD

year (1969)

Station	Atm. Temp.		Earth Temp.		Sunshine Hours	Observation Time	
	Max	Min	1ft deep	4ft deep		Relative Humidity	Piche Evaporation
Day	C°	C°	C°	C°	Hr	%	mm
1						78	1.8
2						91	0.9
3						82	0.8
4						85	1.5
5						82	1.1
6						90	1.0
7						87	0.7
8						81	1.5
9						78	2.5
10						86	1.3
11						82	1.9
12						88	0.6
13						82	1.5
14						83	1.2
15						86	1.2
16						79	1.7
17						82	1.2
18						90	0.9
19						83	1.4
20						85	1.6
21						87	0.8
22						84	1.3
23						83	1.4
24						85	1.6
25						84	1.3
26						92	1.2
27						90	1.0
28						82	1.3
29						84	1.4
30						86	1.1
31							
Total						2550	39.3
Mean						85	1.3

METEOROLOGICAL RECORD

year (1969)

Station <u>Kissidougou</u>		Month <u>Jul.</u>		Observation Time			
Day	Atm. Temp.		Earth Temp.		Sunshine Hours Hr	Relative Humidity %	Piche Evaporation mm
	Max	Min	1ft deep	4ft deep			
	C°	C°	C°	C°			
1						83	1.5
2						87	1.2
3						84	1.1
4						89	1.4
5						84	1.1
6						95	0.4
7						87	0.5
8						88	1.6
9						87	0.8
10						85	1.3
11						88	0.7
12						89	1.1
13						83	1.3
14						88	1.0
15						87	1.0
16						91	0.7
17						86	0.7
18						97	0.5
19						84	0.9
20						88	1.1
21						88	0.9
22						92	0.9
23						83	0.9
24						91	1.0
25						82	0.7
26						86	1.2
27						92	0.8
28						92	1.1
29						88	0.6
30						90	1.5
31						88	0.5
Total						2724	30.0
Mean						88	1.0

METEOROLOGICAL RECORD

year (1969)

Station <u>Kissidougou</u>		Month <u>Aug</u>		Observation Time			
Day	Atm. Temp.		Earth Temp.		Sunshine Hours	Relative Humidity	Piche Evaporation
	Max C°	Min C°	1ft deep C°	4ft deep C°			
1						91	1.4
2						90	0.8
3						91	1.0
4						83	1.6
5						83	1.2
6						91	0.2
7						85	1.1
8						86	1.3
9						89	0.2
10						95	0.7
11						95	0.7
12						85	1.1
13						87	1.1
14						90	1.0
15						87	1.1
16						87	1.4
17						96	0.5
18						93	0.9
19						86	1.3
20						90	0.9
21						94	0.5
22						90	0.6
23						91	1.1
24						83	1.3
25						84	1.2
26						87	1.2
27						86	1.2
28						83	1.4
29						90	0.9
30						89	1.2
31						83	0.9
Total						2750	32.2
Mean						89	1.0

METEOROLOGICAL RECORD

year (1969)

Station <u>Kissidougou</u>		Month <u>Sep</u>		Observation Time			
Day	Atm. Temp.		Earth Temp.		Sunshine Hours Hr	Relative Humidity %	Piche Evaporation mm
	Max C°	Min C°	1ft deep C°	4ft deep C°			
1						88	1.1
2						85	1.5
3						82	1.3
4						85	1.0
5						90	1.0
6						86	1.3
7						86	1.1
8						80	1.4
9						83	1.4
10						89	1.4
11						82	1.4
12						81	1.3
13						85	1.8
14						83	1.2
15						75	0.4
16						79	1.5
17						83	1.1
18						85	0.9
19						93	1.1
20						80	1.4
21						86	1.1
22						92	1.1
23						91	1.0
24						83	0.9
25						90	1.1
26						89	1.0
27						89	1.1
28						85	1.2
29						78	1.3
30						84	1.2
31							
Total						2577	35.6
Mean						86	1.2

METEOROLOGICAL RECORD

year (1969)

Station <u>Kissidougou</u>		Month <u>Oct.</u>		Observation Time			
Day	Atm. Temp.		Earth Temp.		Sunshine Hours	Relative Humidity	Piche Evaporation
	Max C°	Min C°	1ft deep C°	4ft deep C°			
1						90	1.2
2						88	0.8
3						88	0.9
4						88	1.1
5						88	1.0
6						84	1.3
7						82	1.2
8						85	1.5
9						85	1.2
10						79	1.1
11						88	0.7
12						91	2.0
13						87	1.7
14						82	1.6
15						82	1.2
16						82	1.6
17						82	1.5
18						87	1.6
19						81	1.4
20						89	1.0
21						85	1.1
22						84	1.2
23						87	0.9
24						90	1.1
25						87	1.3
26						87	1.0
27						87	1.3
28						79	1.5
29						80	1.7
30						86	1.6
31						89	1.4
Total						2673	379
Mean						86	1.2

METEOROLOGICAL RECORD

year (1970)

Station	Month				Observation Time		
Kissidougou	Jan						
Day	Atm. Temp.		Earth Temp.		Sunshine Hours Hr	Relative Humidity %	Piche Evaporation mm
	Max C°	Min C°	1ft deep C°	4ft deep C°			
1						66	24
2						75	24
3						77	28
4						82	24
5						75	24
6						82	24
7						79	24
8						77	25
9						75	25
10						77	28
11						73	28
12						76	24
13						71	27
14						68	25
15						74	27
16						69	33
17						64	37
18						58	48
19						62	38
20						67	20
21						73	12
22						71	40
23						69	37
24						62	35
25						58	38
26						56	37
27						50	44
28						51	45
29						55	45
30						50	55
31						52	22
Total						2094	932
Mean						68	30

METEOROLOGICAL RECORD

year (1970)

Station	Atm. Temp.		Earth Temp.		Sunshine Hours	Observation Time	
Day	Max	Min	1ft deep	4ft deep		Relative Humidity	Piche Evaporation
	C°	C°	C°	C°	Hr	%	mm
1						84	X
2						75	X
3						76	X
4						75	2.1
5						75	2.4
6						74	2.0
7						75	2.6
8						79	1.8
9						82	1.7
10						83	1.9
11						75	X
12						76	X
13						77	2.5
14						71	1.8
15						77	1.7
16						81	1.7
17						87	1.9
18						77	2.1
19						74	2.4
20						74	1.5
21						70	2.2
22						81	1.7
23						77	2.6
24						82	2.4
25						77	2.3
26						70	1.8
27						82	1.5
28						87	0.9
29						82	1.6
30						81	1.2
31						87	1.4
Total						2476	49.3
Mean						80	1.9

METEOROLOGICAL RECORD

year (1970)

Station <i>Kissidougou</i>		Month <i>Jun.</i>		Observation Time			
Day	Atm. Temp.		Earth Temp.		Sunshine Hours Hr	Relative Humidity %	Piche Evaporation mm
	Max C°	Min C°	1ft deep C°	4ft deep C°			
1						80	2.1
2						79	2.1
3						77	1.7
4						81	1.6
5						77	2.0
6						79	2.0
7						85	1.4
8						85	1.5
9						84	1.1
10						82	1.8
11						77	1.5
12						77	1.7
13						79	1.6
14						83	1.4
15						81	
16						81	1.2
17						80	1.6
18						80	1.2
19						77	2.1
20						82	1.7
21						77	1.5
22						80	1.5
23						83	1.5
24						89	1.3
25						78	1.2
26						87	1.3
27						83	1.5
28						82	0.8
29						82	1.1
30						76	2.5
31							
Total						2442	47.2
Mean						81	1.6

METEOROLOGICAL RECORD

year (1970)

Station <u>Kissidougou</u>		Month <u>Jul</u>		Observation Time			
Day	Atm. Temp.		Earth Temp.		Sunshine Hours	Relative Humidity	Piche Evaporation
	Max C°	Min C°	1ft deep C°	4ft deep C°			
1						83	1.3
2						90	0.8
3						83	1.4
4						83	1.5
5						90	1.0
6						85	1.7
7						89	1.5
8						81	1.5
9						85	1.3
10						91	1.0
11						83	1.4
12						87	0.8
13						85	1.4
14						89	1.2
15						91	0.7
16						91	0.7
17						87	0.8
18						88	1.3
19						82	1.5
20						89	1.2
21						87	1.2
22						88	0.9
23						84	1.4
24						82	1.5
25						93	0.6
26						90	0.8
27						82	1.4
28						85	1.0
29						86	1.6
30						82	1.7
31						93	0.8
Total						2684	37.1
Mean						87	1.2

METEOROLOGICAL RECORD

year (1971)

Station <u>Kissidougou</u>		Month <u>Jun</u>		Observation Time			
Day	Atm. Temp.		Earth Temp.		Sunshine Hours	Relative Humidity	Piche Evaporation
	Max C°	Min C°	1ft deep C°	4ft deep C°			
1						x	x
2						x	x
3						x	x
4						x	x
5						x	x
6						x	x
7						x	x
8						x	x
9						69	3.1
10						73	1.7
11						87	1.5
12						79	2.7
13						76	2.7
14						79	2.9
15						78	1.9
16						81	2.1
17						83	1.7
18						84	1.6
19						85	1.7
20						75	2.6
21						78	2.0
22						87	1.7
23						78	2.3
24						81	1.9
25						74	2.8
26						72	1.7
27						79	2.3
28						73	3.3
29						84	1.9
30						81	1.7
31							
Total						1742	47.8
Mean						79	2.2

METEOROLOGICAL RECORD

year (1971)

Station <u>Kissidougou</u>		Month <u>Jul.</u>		Observation Time			
Day	Atm. Temp.		Earth Temp.		Sunshine Hours Hr	Relative Humidity %	Piche Evaporation mm
	Max C°	Min C°	1ft deep C°	4ft deep C°			
1						80	1.9
2						79	2.1
3						75	2.3
4						x	x
5						79	1.8
6						88	1.0
7						72	2.4
8						85	2.4
9						80	2.3
10						87	1.5
11						84	1.7
12						81	2.0
13						70	2.4
14						87	1.3
15						78	1.9
16						80	2.5
17						86	1.1
18						80	2.1
19						81	1.9
20						82	1.7
21						77	2.5
22						86	1.0
23						83	2.1
24						78	1.8
25						79	2.2
26						77	2.3
27						79	2.5
28						77	2.5
29						75	2.8
30						92	1.0
31						79	2.5
Total						2420	59.5
Mean						78	1.9

METEOROLOGICAL RECORD

year (1971)

Station <u>Kissidougou</u>		Month <u>Aug</u>		Observation Time			
Day	Atm. Temp.		Earth Temp.		Sunshine Hours Hr	Relative Humidity %	Piche Evaporation mm
	Max	Min	1ft deep	4ft deep			
	C°	C°	C°	C°			
1						82	20
2						85	1.0
3						85	1.6
4						90	1.2
5						89	1.2
6						83	2.2
7						75	2.3
8						87	1.4
9						86	2.3
10						81	2.2
11						84	1.7
12						83	1.4
13						91	1.0
14						80	2.4
15						80	1.7
16						83	2.7
17						86	2.2
18						80	3.5
19						83	1.6
20						82	1.8
21						95	0.9
22						81	1.9
23						78	1.4
24						91	1.4
25						84	2.2
26						85	1.4
27						92	0.6
28						81	2.2
29						81	2.0
30						87	1.6
31						82	2.0
Total						2618	55.0
Mean						84	1.8

METEOROLOGICAL RECORD

year (1971)

Station <u>Kissidauga</u>		Month <u>Sep.</u>		Observation Time			
Day	Atm. Temp.		Earth Temp.		Sunshine Hours	Relative Humidity	Piche Evaporation
	Max C°	Min C°	1ft deep C°	4ft deep C°			
1						81	2.2
2						92	0.9
3						82	2.3
4						82	1.3
5						86	1.4
6						88	1.5
7						78	2.4
8						87	1.6
9						77	2.3
10						86	1.4
11						83	1.4
12						87	1.3
13						90	0.8
14						76	3.0
15						79	1.5
16						83	1.6
17						87	1.4
18						79	1.6
19						92	0.8
20						85	1.6
21						90	1.1
22						88	0.8
23						77	2.3
24						79	1.8
25						79	1.5
26						78	2.0
27						76	2.4
28						88	0.9
29						87	1.6
30						81	2.1
31							
Total						2503	48.8
Mean						83	1.6