

マイクロ
フイルム作成

NO. 1

REPUBLIQUE POPULAIRE REVOLUTIONNAIRE DE GUINEE
MINISTERE DE L'AGRICULTURE, DES EAUX ET FORETS
ET DES FAPA

RAPPORT DE L'ETUDE DE FAISABILITE
SUR LE
PROJET DE DEVELOPPEMENT AGRICOLE A KANKAN

TOME IV

DONNEES ⅔

Août 1980

AGENCE JAPONAISE DE COOPERATION INTERNATIONALE

AFT

GR 3

80-57

REPUBLIQUE POPULAIRE REVOLUTIONNAIRE DE GUINEE
MINISTERE DE L'AGRICULTURE, DES EAUX ET FORETS
ET DES FAPA.

RAPPORT DE L'ETUDE DE FAISABILITE
SUR LE
PROJET DE DEVELOPPEMENT AGRICOLE A KANKAN

TOME IV

DONNEES ⅔

JICA LIBRARY



1029666[3]

Moût 1980

AGENCE JAPONAISE DE COOPERATION INTERNATIONALE

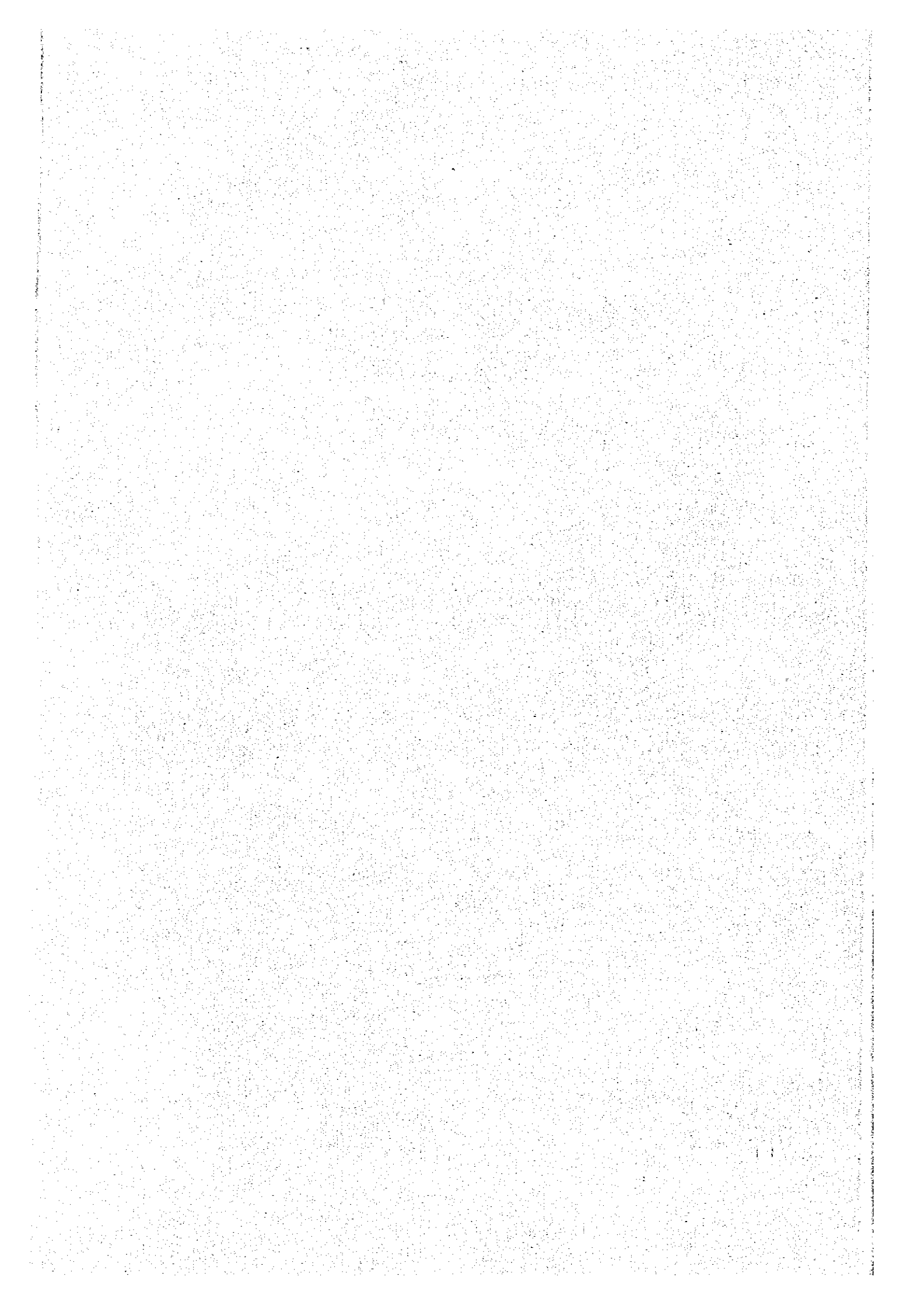
国際協力事業団	
受入 月日 84.19.24	5130
登録No. 708899	8193
	AFT4(1)

Table of Contents

	<u>Page</u>
Table IV-1 Daily Rainfall Record at Kankan (1954 - 1978)	IV-1
Table IV-2 Daily Rainfall Record at Kissidougou (1964 - 1978)	IV-27
Table IV-3 Daily Rainfall Record at Siguiri (1964 - 1978)	IV-43
Table IV-4 Temperature, Sunshine, Relative Humidity and Piche Evaporation at Kankan (1964 - 1978)	IV-59
Table IV-5 Temperature, Sunshine, Relative Humidity and Piche Evaporation at Kissidougou (1964 - 1978)	IV-240
Table IV-6 Temperature, Sunshine, Relative Humidity and Piche Evaporation at Siguiri (1964 - 1969)	IV-402

DATA BOOK IV.

METEOROLOGY



**Table IV-1 Daily Rainfall Record at Kankan
(1954 - 1978)**

DAILY RAINFALL RECORD

Station: Kankan

River Basin Basin % Station % Location N. ° ' E. ° ' E.L. m

Station Site Kankan Drainage Area Km² Year 1954

Month Day	Jan	Feb	Mar	Apr	May	June	Jul	Aug	Sept	Oct	Nov	Dec	Annual
	1				12.0		16.7				13.1	0.7	
2				1.6		7.4		16.4					
3				1.9		20.2	13.0	2.3	37.9		24.7		
4						15.5	2.6	0.1	36.7				
5				0.2					19.2				
6						14.2	2.0		1.2	4.6	0.7		
7				2.6	40.6					2.3	0.8		
8							2.4	56.7	0.9		6.6		
9							0.7	8.6	5.3		17.8		
10						3.8		2.3	39.9	6.9			
11							38.7	9.7	0.7	2.4			
12					21.2	18.2	9.7	2.7	13.0				
13							48.5	39.0		42.3			
14					2.0	0.7	5.8	26.8	21.0	11.5			
15		0.1		18.3	17.9			11.0	5.1	13.1	48.2		
16					3.6			26.4	10.2	2.8	7.1		
17		37.0			57.0			9.0			43.2		
18		3.4			2.3	0.4	40.3	15.1	16.0		2.1		
19						7.3	7.9		0.2				
20						0.2			1.8				
21					6.7	33.9	4.9	9.8		0.2			
22					6.2	22.5	58.1	4.5	4.6				
23						1.2	3.6		12.4	5.2			
24						14.4		21.0		1.2	3.7		
25			6.7				45.9	4.1	6.8	1.5			
26			2.4	4.7		7.2	50.4	35.4	0.4				
27		17.3			1.6	21.7	68.2	9.1	24.7		0.4		
28			5.2		29.7		2.1	63.8	4.5				
29						5.1	11.4	22.1	12.0	2.4			
30			21.2	1.4			2.2	53.8	24.1	1.0			
31					2.1			15.2		0.1			
Total		57.8	40.5	46.9	195.1	220.0	417.2	465.1	307.2	113.2	149.6		
Number of rainy day													
Max. within one recorded day (Date)	()	()	()	()	()	()	()	()	()	()	()	()	()
Max. intensity	6 hr (Date)	()	()	()	()	()	()	()	()	()	()	()	()
	3 hr (Date)	()	()	()	()	()	()	()	()	()	()	()	()
	1 hr (Date)	()	()	()	()	()	()	()	()	()	()	()	()
	1 hr (Date)	()	()	()	()	()	()	()	()	()	()	()	()
Summary of all recorded years starting from 19 ~ 19													
Average													
Max. (Year)	()	()	()	()	()	()	()	()	()	()	()	()	()
Min. (Year)	()	()	()	()	()	()	()	()	()	()	()	()	()
Daily Max.	1-day			2-day			3-day			Original			

DAILY RAINFALL RECORD

Station: Kankan

River Basin _____ Basin # _____ Station # _____ Location N. ° ' E. ° ' E.L. _____ m

Station Site Kan kan Drainage Area _____ km² Year 1955

Month Day	Jan	Feb	Mar	Apr	May	June	Jul	Aug	Sept	Oct	Nov	Dec	Annual
	1						14.7		8.4	2.4	3.4		
2								92.1		8.7	2.9		
3				8.4		19.5	2.2	7.0	10.3	0.3			
4					27.9	5.6	0.7	2.4	162.7	31.4			
5					0.4		4.8					21.9	
6						31.6	2.3	2.2					
7		10.1				1.4	14.8		4.8	0.2	12.4	0.2	
8						23.2	1.5		21.3			10.1	
9						0.1	6.7	2.6	10.3				
10			4.4			2.6		45.0	36.3				
11			1.6			19.7	9.1	60.3	1.4	0.3			
12					1.9		7.7	0.4	44.1	0.2			
13					6.5	32.0		1.8		12.4			
14			0.8				2.9	1.1		2.3			
15						0.5		6.7	15.1				
16					0.4	30.2	32.0	7.6	43.6				
17			1.4		33.2	6.3	0.7	9.0	0.8	13.3			
18			0.7		3.7	0.5			38.5	9.1			
19					10.1	12.9	29.0	15.6		14.2	10.9		
20			0.4	2.7	13.5		12.1	5.7	1.7		12.8		
21			12.6		0.1	2.8	0.3		8.7	4.9			
22				2.7		28.6		23.7	2.6	12.6			
23				5.6			14.6	6.0	3.7	15.2			
24				16.3	1.4		9.8	31.1	2.0	2.7			
25			15.0			5.7		7.2	1.7	2.2			
26		7.7		9.3	26.2	0.6	9.5	10.5	5.7	24.0			
27				8.2	3.1		0.5	1.9	89.9				
28						2.6	10.0	1.3	1.8	0.1			
29					42.4	6.5		31.2	26.2	0.9			
30			11.4		0.3	1.7				15.2			
31							1.5	0.3					
Total		17.8	48.3	53.2	171.1	249.3	172.7	381.1	173.6	535.4	38.3	32.2	
Number of rainy day													
Max. within one recorded day (Date)	()	()	()	()	()	()	()	()	()	()	()	()	()
Max. intensity	6 hr (Date)	()	()	()	()	()	()	()	()	()	()	()	()
	3 hr (Date)	()	()	()	()	()	()	()	()	()	()	()	()
	1 hr (Date)	()	()	()	()	()	()	()	()	()	()	()	()
Summary of all recorded years starting from 19 ~ 19													
Average													
Mar. (Year)	()	()	()	()	()	()	()	()	()	()	()	()	()
Min. (Year)	()	()	()	()	()	()	()	()	()	()	()	()	()
Daily Max.	1-day			2-day			3-day			Original			

DAILY RAINFALL RECORD

Station: Kankan

River Basin _____ Basin # _____ Station # _____ Location N. ° ' E. ° ' E.L. _____ m

Station Site Kankan Drainage Area _____ Km² Year 1956

Day \ Month	Jan	Feb	Mar	Apr	May	June	Jul	Aug	Sept	Oct	Nov	Dec	Annual
	1					0.9	2.9			1.2	2.7		
2							29.7		1.7	2.4			
3						0.2		6.8	35.7	11.5			
4							2.0	45.4	0.6	17.8			
5						1.3		3.7					
6						12.9	13.7		18.0	11.0			
7							0.8	45.8	36.2		17.1		
8						12.1		10.8	46.3		10.7		
9							62.3		52.3	15.7			
10	1.9						21.7	1.0					
11				5.8		12.0	7.7	6.6	21.8	0.8			
12									8.3				
13							32.0	3.8				16.7	
14			0.1			0.9			21.8		48.2		
15						1.0	3.4	25.7	70.7				
16					10.8	7.2	2.4	10.6	0.2				
17				0.9		3.6	1.9		16.0				
18				0.1		11.0	0.7	35.4	20.5				
19						10.4	0.1	41.1	10.9				
20						0.3	6.7	0.4	1.4				
21		1.1		7.9	5.3	0.2	2.0		28.4	5.4			
22			4.7			56.8	6.1	21.7		13.2			
23						13.3		14.0					
24							1.2		14.4	0.5			
25							2.8	12.4	0.6				
26						5.4	6.6	1.8					
27				3.3	0.7	0.5		1.7					
28			11.3	7.6	0.1	8.6		4.7	13.9				
29			0.2		20.4	4.7	0.8	33.0	1.1	2.2			
30				3.3	42.5	7.2	6.3		1.2	7.4			
31					0.2		0.3						
Total	1.9	1.1	16.3	28.9	80.9	172.5	211.2	327.6	379.4	83.2	76.0	16.7	
Number of rainy day													
Max. within one recorded day (Date)	()	()	()	()	()	()	()	()	()	()	()	()	()
Max. intensity	6 hr (Date)	()	()	()	()	()	()	()	()	()	()	()	()
	3 hr (Date)	()	()	()	()	()	()	()	()	()	()	()	()
	1 hr (Date)	()	()	()	()	()	()	()	()	()	()	()	()
	1 hr (Date)	()	()	()	()	()	()	()	()	()	()	()	()
Summary of all recorded years starting from 19 ~ 19													
Average													
Mar. (Year)	()	()	()	()	()	()	()	()	()	()	()	()	()
Min. (Year)	()	()	()	()	()	()	()	()	()	()	()	()	()
Daily Max.	1-day			2-day			3-day			Original			

DAILY RAINFALL RECORD

Station: Kankan

River Basin _____ Basin # _____ Station # _____ Location N. ° ' E. ° ' E.L. _____ m

Station Site Kankan Drainage Area _____ km² Year 1957

Month Day	Jan	Feb	Mar	Apr	May	June	Jul	Aug	Sept	Oct	Nov	Dec	Annual
	1					2.5	3.5	1.4	6.7		14.3	12.6	
2						5.6		14.9	17.7	1.0			
3					9.2	4.4	0.2	40.0	0.7	1.6	0.6		
4							10.7		94.1		1.6		
5				3.9	34.8		17.4	10.0	4.0				
6						9.8		1.4	16.4				
7				19.1		17.8	15.0	13.5	15.3	1.4			
8					1.9	0.7	1.4		8.4		0.7		
9							0.8	44.5	1.2	8.0	9.7		
10							2.5	14.8	3.5				
11						16.5	16.2	27.5	28.4				
12				0.1			6.7	28.4	3.1				
13						22.2	1.0		16.0				
14						22.2	0.6	2.4	16.2	100.1	3.2		
15					44.6	49.4	7.5	5.9	0.1	2.9			
16					3.0		0.3		0.8	74.5			
17				37.1		41.3	0.4		24.8	3.8			
18					22.4			1.5	16.7				
19					0.4	4.6	52.1	17.6	1.7	9.7			
20				45.2		1.0	4.3			1.3			
21					13.6	12.0		3.9	11.1				
22						10.5	21.7	11.3	9.4	1.4			
23				24.9		0.2	14.8	49.3	11.6	26.6			
24				14.0		3.8		0.3	14.1				
25				41.0				31.1	3.7				
26		16.6		15.3		1.1	26.5			8.5			
27						14.7	11.0	14.1	9.8	35.7			
28		13.4			0.5				1.3	9.9			
29					33.5	9.1	14.1		4.2	0.3			
30					0.8	6.2	8.4	2.2	5.6				
31								45.2		8.8			
Total		30.0		200.6	167.2	256.6	285.0	386.5	339.9	307.8	28.4		
Number of rainy day													
Max. within one recorded day (Date)	()	()	()	()	()	()	()	()	()	()	()	()	()
Max. intensity	6 hr (Date)	()	()	()	()	()	()	()	()	()	()	()	()
	3 hr (Date)	()	()	()	()	()	()	()	()	()	()	()	()
	1 hr (Date)	()	()	()	()	()	()	()	()	()	()	()	()
Summary of all recorded years starting from 19 ~ 19													
Average													
Max. (Year)	()	()	()	()	()	()	()	()	()	()	()	()	()
Min. (Year)	()	()	()	()	()	()	()	()	()	()	()	()	()
Daily Max.	1-day			2-day			3-day			Original			

DAILY RAINFALL RECORD

Station: Kankan

River Basin _____ Basin No. _____ Station No. _____ Location N. ° ' E. ° ' E.L. _____ m

Station Site Kankan Drainage Area _____ km² Year 1958

Month Day	Jan	Feb	Mar	Apr	May	June	Jul	Aug	Sept	Oct	Nov	Dec	Annual
	1							4.8		18.5	20.8	0.5	
2							4.8	1.7	3.1		3.8		
3						20.1	4.8	12.4	1.7	2.3	10.3		
4						4.3	0.4	11.4		0.6			
5				0.8				5.0	50.1				
6						31.5	22.4	2.8			0.8		
7									30.6	1.1			
8					5.8		6.8	1.8	15.6	51.7			
9					26.3		20.4						
10				10.9				2.1	40.8	0.6			
11						80.5		6.1			4.4		
12						3.3	8.3	2.0	1.9	1.7	44.1		
13				0.1	14.7	20.2		0.8	5.4	0.1	12.3		
14				21.0		14.0	31.8	4.5	12.1	5.5			
15	4.8			1.9		0.7	0.1	0.2	43.7	14.0			
16					11.9	1.8	7.6		0.1	2.4	7.3		
17					6.3			12.7	27.6	0.4	8.1		
18						4.2		29.8			0.2		
19			3.6		10.5			34.9	43.1				
20						2.9	10.1	1.1					
21			4.9				1.6	0.6		6.9			
22			3.4	27.9		41.8			36.3	1.9			
23				1.5		1.7		1.3		12.4	7.4		
24						19.9		51.8			5.9		
25								1.8	14.0				
26					6.4		4.9	2.2			53.8		
27			3.4		1.2					1.6	2.0		
28						26.2		16.0	1.5	4.2			
29				43.6		0.6			4.5				
30					14.5	0.2	0.5	20.0	10.7	14.8			
31					2.3			5.9		11.6			
Total	4.8		15.3	107.7	99.9	273.9	129.3	228.9	361.3	154.6	160.9		
Number of rainy day													
Max. within one recorded day (Date)	()	()	()	()	()	()	()	()	()	()	()	()	()
Max. intensity	6 hr (Date)	()	()	()	()	()	()	()	()	()	()	()	()
	3 hr (Date)	()	()	()	()	()	()	()	()	()	()	()	()
	1 hr (Date)	()	()	()	()	()	()	()	()	()	()	()	()
Summary of all recorded years starting from 19 ~ 19													
Average													
Max. (Year)	()	()	()	()	()	()	()	()	()	()	()	()	()
Min. (Year)	()	()	()	()	()	()	()	()	()	()	()	()	()
Daily Max.	1-day			2-day			3-day			Original			

DAILY RAINFALL RECORD

Station: Kan Kan

River Basin _____ Basin # _____ Station # _____ Location N. ° ' E. ° ' E.L. _____ m

Station Site Kan Kan Drainage Area _____ Km² Year 1959

Month Day	Jan	Feb	Mar	Apr	May	June	Jul	Aug	Sept	Oct	Nov	Dec	Annual
1								3.5	29.6	0.4	0.7		
2					18.3		34.8	1.9	39.2	3.1	40.7		
3					11.3	5.0	10.0	33.2	15.1	9.2	2.1		
4			7.5			1.5	15.7		30.5		38.0		
5					9.6	4.9	23.9	5.2	112.9		1.1		
6						0.6	2.6	11.6	3.4	2.1			
7					9.4		41.2	1.4	0.4				
8					28.8		7.5	12.4					
9				1.5		2.5	25.3	20.5		9.0			
10						3.4	0.3		40.7	7.1			
11						3.3			13.3				
12	0.3					2.7		3.0	4.4				
13							17.9	1.3	25.4	0.9			
14						12.6	13.1	0.5	41.6				
15							5.4	2.1					
16									0.9	1.1			
17					67.5	34.2		5.2	41.7	0.5			
18						2.0	10.5		18.2				
19				2.4	4.2		34.3		4.2	7.7			
20				0.1	6.7	1.1		36.5					
21				1.0				65.0		2.1			
22					2.5		13.5		17.9				
23						42.6		6.0	21.0	5.7			
24					14.4	0.2		4.5		7.5			
25					1.1				7.2	12.5			
26					18.6		75.1						
27								0.1					
28					10.5			10.7	2.5				
29							30.1	13.6	5.2				
30						45.8	2.8	81.8	26.1				
31								7.4					
Total	0.3		7.5	5.0	177.9	119.4	315.0	320.4	614.4	73.9	85.2		
Number of rainy day													
Max. within one recorded day (Date)	()	()	()	()	()	()	()	()	()	()	()	()	()
Max. intensity	6 hr (Date)	()	()	()	()	()	()	()	()	()	()	()	()
	3 hr (Date)	()	()	()	()	()	()	()	()	()	()	()	()
	1 hr (Date)	()	()	()	()	()	()	()	()	()	()	()	()
Summary of all recorded years starting from 19 ~ 19													
Average													
Max. (Year)	()	()	()	()	()	()	()	()	()	()	()	()	()
Min. (Year)	()	()	()	()	()	()	()	()	()	()	()	()	()
Daily Max.	1-day			2-day			3-day			Original			

DAILY RAINFALL RECORD

Station: Kan Kan

River Basin _____ Basin # _____ Station # _____ Location N. ° ' E. ° ' RL. _____ m

Station Site Kan Kan Drainage Area _____ km² Year 1960

Month Day	Jan	Feb	Mar	Apr	May	June	Jul	Aug	Sept	Oct	Nov	Dec	Annual
	1					1.5	8.8	9.1	5.1	16.5	5.0	11.5	
2							12.7	1.5	25.5	6.5			
3						13.0	1.1	17.4					
4				12.6			7.2	9.6	6.0				
5					24.3	6.3	2.1	0.2		22.8			
6								1.5		26.6			
7						2.6		56.5	40.0		2.8		
8						15.4	12.2			5.3	2.8		
9							51.3		2.0		9.1		
10						1.8	8.3	42.9	10.5	16.2			
11							9.0	31.3	24.4				
12					11.6				1.7				
13					1.1		42.5	2.8	31.9				
14							1.8	1.2	145.2	17.4			
15				12.7		25.8	27.6		0.7	4.6			
16				0.9		29.0			24.3	4.3			
17			15.1			7.4	24.6	10.0	3.9	1.8			
18						2.1	9.2	29.3		8.7			
19						15.4	4.5						
20			0.3		5.9				1.9				
21							0.4	22.8					
22					7.4	1.3	8.8	11.4					
23						19.7		25.4	15.6	0.2			
24			14.6		26.5	3.1		3.6	16.4	5.5			
25		1.2		8.4	3.3	8.9	5.0			2.0			
26					5.4		7.2	1.0	1.1				
27				15.5		2.7	36.0	5.3	10.8	10.8			
28			18.4	23.9	27.2	1.0	3.5	12.4		4.9			
29							2.9	1.1	5.1				
30							91.0	6.7	20.9	12.5			
31					8.8	36.3	34.9	10.4					
Total		0.2	48.4	79.0	123.0	208.6	418.9	342.3	464.4	144.2	27.2		
Number of rainy day													
Max. within one recorded day (Date)	()	()	()	()	()	()	()	()	()	()	()	()	()
Max. intensity	6 hr (Date)	()	()	()	()	()	()	()	()	()	()	()	()
	5 hr (Date)	()	()	()	()	()	()	()	()	()	()	()	()
	1 hr (Date)	()	()	()	()	()	()	()	()	()	()	()	()
Summary of all recorded years starting from 19 ~ 19													
Average													
Mar. (Year)	()	()	()	()	()	()	()	()	()	()	()	()	()
Min. (Year)	()	()	()	()	()	()	()	()	()	()	()	()	()
Daily Max.	1-day			2-day			3-day			Original			

DAILY RAINFALL RECORD

Station: Kan Kan

River Basin Basin No. Station No. Location N. ' E. ' E.L. m

Station Site Kan Kan Drainage Area km² Year 1961

Month Day	Jan	Feb	Mar	Apr	May	June	Jul	Aug	Sept	Oct	Nov	Dec	Annual
	1						16.0	22.3			18.7		
2					4.1	0.1		2.9	65.5	2.5			
3						14.7		33.7	61.6				
4					2.3		7.4	5.6	7.3				
5						4.5	2.4		8.7				
6							1.4	3.1	17.3	1.4			
7					0.2	11.4	4.1		13.1	4.6			
8					48.0			61.7		13.8			
9				1.5				4.9		9.2	16.7		
10							28.0	11.2	2.0	2.8	4.0		
11							5.6						
12				1.1		0.1	2.7		6.9	8.1			
13							12.8	42.4	8.5	3.6			
14								0.2	4.8				
15					4.6				1.2				
16				2.3			1.4		7.0	11.7			
17						0.8	5.3		20.8				
18						1.5	9.1	0.3	23.3				
19						1.3	1.5						
20				7.8	2.7	5.7	15.7						
21					10.0	1.5	5.8		18.9				
22				43.6				0.5	7.3				
23						22.5	9.0		6.4				
24				8.8	15.2		5.0	8.2	18.7				
25					0.2	0.4		45.1	16.4				
26			4.5				20.5		29.6	19.2			
27				22.6				34.3					
28				26.4		27.6		0.8	3.6				
29				2.4	20.5		0.8	19.4	32.0				
30						41.8	5.3	7.2	9.1				
31					4.8		22.7	4.9					
Total			4.5	116.5	112.6	153.9	216.8	287.4	370.0	84.9	20.7		
Number of rainy day													
Max. within one recorded day (Date)	()	()	()	()	()	()	()	()	()	()	()	()	()
Max. intensity	6 hr (Date)	()	()	()	()	()	()	()	()	()	()	()	()
	3 hr (Date)	()	()	()	()	()	()	()	()	()	()	()	()
	1 hr (Date)	()	()	()	()	()	()	()	()	()	()	()	()
Summary of all recorded years starting from 19 ~ 19													
Average													
Max. (Year)	()	()	()	()	()	()	()	()	()	()	()	()	()
Min. (Year)	()	()	()	()	()	()	()	()	()	()	()	()	()
Daily Max.	1-day			2-day			5-day			Original			

DAILY RAINFALL RECORD

Station: Kan Kan

River Basin _____ Basin # _____ Station # _____ Location N. ° ' E. ° ' E.L. _____ m

Station Site Kan Kan Drainage Area _____ Sq _____ Year 1962

Day \ Month	Jan	Feb	Mar	Apr	May	June	Jul	Aug	Sept	Oct	Nov	Dec	Annual
	1					1.6		13.4		27.4			
2						11.8	40.7	7.8	0.5				
3				0.4				22.0		0.8	15.0		
4							2.0	9.3	23.7	5.8	1.4		
5						8.4	1.7	48.4	14.0	3.7	4.5		
6				1.1		0.3	20.0	1.4	29.6	11.6			
7				17.8	4.8				67.8	0.1			
8						21.1	5.1	0.4	9.5	11.2	3.5		
9					0.5	0.2		0.3	5.5	14.7			
10								4.3	24.3	7.6			
11						27.5	30.8		36.5				
12					3.8			8.2					
13						6.5		11.6	47.8	12.0			
14					13.8		1.6		3.2				
15			7.9		2.4		2.2	0.7	5.4	16.1			
16				26.4		24.3	24.8	2.4	52.9	2.5			
17						0.3	15.8	19.4	0.6				
18				18.1	1.1			17.2	5.3	7.4			
19				0.3				61.1					
20						24.6	18.3	27.4	147.1	18.5			
21				28.2	4.2		12.1	7.1	15.0				
22					0.6		10.7	18.5	5.9	0.3			
23				4.9	8.5	4.2	7.0	0.8	14.4				
24				12.0			1.0		2.3		2.0		
25				0.6	28.8	2.6	7.9	43.3	0.4	1.6			
26					10.0	22.5	18.4	7.3		2.4			
27				41.0		1.2	19.5		6.5				
28								7.5	6.9	0.1			
29						29.3		27.4	12.6				
30					0.6		1.4	31.0					
31					30.3								
Total			7.9	150.8	105.0	185.8	254.6	378.8	570.1	217.4	26.4		
Number of rainy day													
Max. within one recorded day (Date)	()	()	()	()	()	()	()	()	()	()	()	()	()
Max. intensity	6 hr (Date)	()	()	()	()	()	()	()	()	()	()	()	()
	3 hr (Date)	()	()	()	()	()	()	()	()	()	()	()	()
	3 hr (Date)	()	()	()	()	()	()	()	()	()	()	()	()
	1 hr (Date)	()	()	()	()	()	()	()	()	()	()	()	()
Summary of all recorded years starting from 19 ~ 19													
Average													
Max. (Year)	()	()	()	()	()	()	()	()	()	()	()	()	()
Min. (Year)	()	()	()	()	()	()	()	()	()	()	()	()	()
Daily Max.	1-day			2-day			3-day			Original			

DAILY RAINFALL RECORD

Station: Kam Kan

River Basin _____ Basin # _____ Station # _____ Location N. ° ' E. ° ' E.L. _____

Station Site Kam Kan Drainage Area _____ km^2 Year 1963

Month Day	Jan	Feb	Mar	Apr	May	June	Jul	Aug	Sept	Oct	Nov	Dec	Annual
	1					6.0	38.4		11.2		0.5		
2							4.6		5.1		5.2		
3					3.0				25.1	15.8			
4								28.6	3.8	65.8			
5						42.9		5.0	45.2	13.5			
6						19.5	2.5	16.1	9.9	3.6			
7					0.1	0.6		8.4		13.1			
8					10.5		7.0	3.8	7.5	1.0			
9		0.2						8.6	13.0	9.4			
10				13.4	12.1		0.4	22.3	13.3	26.3			
11		0.2		1.7				0.5	5.3	6.0			
12					28.9		24.0	21.2	6.2	41.9			
13				12.3				1.4	13.2	9.4			
14								7.9	5.3	40.7			
15					48.9		12.2	1.3	1.1	11.3			
16							5.4	4.3					
17					15.2			0.1	21.5				
18					1.8	10.0	0.5		3.9				
19						0.6	22.4	4.4	2.1				
20			6.1				6.7		20.2				
21							0.5	25.3					
22			0.1		25.4				21.3				
23			1.2	16.9	22.1		12.4	4.6	0.8				
24			4.7	0.1	3.3		2.1	43.3					
25				4.6			35.0	13.0	0.7	40.2			
26					1.8			26.5	3.7	0.3			
27				58.0	9.1	12.6				4.6			
28				50.2	15.2		9.2		7.2				
29				3.5	5.3		40.4	9.1	16.2				
30							6.6	45.6					
31								0.4					
Total		0.4	12.1	160.7	228.7	131.6	196.9	224.9	266.9	303.4	5.2		
Number of rainy day													
Max. within one recorded day (Date)	()	()	()	()	()	()	()	()	()	()	()	()	()
Max. intensity	6 hr (Date)	()	()	()	()	()	()	()	()	()	()	()	()
	3 hr (Date)	()	()	()	()	()	()	()	()	()	()	()	()
	1 hr (Date)	()	()	()	()	()	()	()	()	()	()	()	()
Summary of all recorded years starting from 19 ~ 19													
Average													
Max. (Year)	()	()	()	()	()	()	()	()	()	()	()	()	()
Min. (Year)	()	()	()	()	()	()	()	()	()	()	()	()	()
Daily Max.	1-day			2-day			3-day			Original			

DAILY RAINFALL RECORD

Station: Kan Kan

River Basin _____ Basin # _____ Station # _____ Location N. ° ' E. ° ' E.L. _____ m

Station Site Kan Kan Drainage Area _____ Km² Year 1964

Day	Month	Jan	Feb	Mar	Apr	May	June	Jul	Aug	Sept	Oct	Nov	Dec	Annual
1							27.8	62.4	10.0	0.3		0.4		
2					3.8		2.8	5.4	0.6	5.2		2.6		
3								26.4	0.2	5.5				
4									36.0	0.9				
5						36.7			7.1	13.8	0.1			
6						4.0		0.9			9.3			
7							33.3	72.3	1.1	22.4	2.5			
8						21.8			0.8	15.7				
9											27.1			
10									38.0	79.4	25.6			
11						9.2	2.7	72.5		36.2				
12						0.5	1.0	2.1		3.7			14.5	
13						11.8	10.6	10.0	7.6	8.5			19.5	
14						5.1	15.5	6.1	1.3	14.5				
15						6.3	10.7	38.5	10.8		0.2			
16							8.5	1.0	1.1		0.2			
17							51.4	27.1	5.1	22.3	29.2			
18			0.6					1.4	10.8	23.3	13.4			
19							43.5		1.1	3.4				
20						0.2	9.2	4.5	1.6	29.1	2.3			
21					17.2	5.1	9.5			2.4				
22								0.6		7.4	0.4			
23								7.2	1.3	0.4				
24						1.0	8.6	51.3	23.9				0.5	
25					3.0		21.3	10.8	1.3	13.7				
26						22.3	0.4	17.2	12.5	0.8	1.3			
27							17.6	0.9		5.6	4.2			
28			3.8	10.3			2.5	1.2	1.8	7.9				
29						3.0	0.6	7.9	12.3	6.8	12.6			
30							0.6	11.5	1.2	1.5	1.7			
31			20.1			26.9		49.1						
Total			34.5	34.3	173.9	282.1	498.3	190.5	339.7	130.1	3.0	34.5		
Number of rainy day														
Max. within one recorded day (Date)	()	()	()	()	()	()	()	()	()	()	()	()	()	()
Max. intensity	6 hr (Date)	()	()	()	()	()	()	()	()	()	()	()	()	()
	3 hr (Date)	()	()	()	()	()	()	()	()	()	()	()	()	()
	1 hr (Date)	()	()	()	()	()	()	()	()	()	()	()	()	()
Summary of all recorded years starting from 19 ~ 19														
Average														
Mar. (Year)	()	()	()	()	()	()	()	()	()	()	()	()	()	()
Min. (Year)	()	()	()	()	()	()	()	()	()	()	()	()	()	()
Daily Max.	1-day			2-day			3-day				Original			

DAILY RAINFALL RECORD

Station: Kan Kan

River Basin _____ Basin # _____ Station # _____ Location N. ° ' E. ° ' E.L. _____ m

Station Site Kan Kan Drainage Area _____ Km² Year 1965

Day	Month	Jan	Feb	Mar	Apr	May	June	Jul	Aug	Sept	Oct	Nov	Dec	Annual
1			10.7						20.3	21.9				
2							10.0	55.6	10.1	26.3	7.4			
3						10.0		12.2		11.8				
4							4.7	3.9			10.7			
5		8.2		12.1							0.5			
6		0.2				3.0		6.6						
7						1.1	42.3		0.6	15.0				
8							2.0	4.1	18.5	24.5	12.7			
9		1.2					9.2	14.3	3.7	10.5	6.8			
10		6.1					25.1	26.3	8.3	36.5	5.3			
11							16.8	37.5		5.5	2.4			
12														
13						8.0		11.5		39.9	6.9			
14						3.0	17.6		3.3	3.3				
15							1.8		14.6		15.8			
16						22.7			2.8	25.0	1.0			
17							73.5	18.8	16.0	19.3	1.8			
18							13.5	19.8	15.0		14.5			
19							2.2	5.5	0.3	21.9				
20						14.4	8.2		21.8	12.0	0.7			
21								6.2	12.1		0.5			
22						6.9	9.7		7.6	3.6				
23								7.8	3.3	18.8	0.1			
24							12.2	2.0	0.6					
25						15.8	7.7		4.9	3.1	4.5			
26							23.2	13.3	1.9	2.9	1.9			
27						18.9	11.4	6.0	6.2	9.6	15.3			
28							12.8	0.5	51.0	26.0				
29		1.9							3.9					
30		3.6		2.3						8.0	21.1			
31						9.6		5.2			0.2			
Total		16.2	10.2	14.4		123.4	304.9	257.1	227.8	345.4	130.1			
Number of rainy day														
Max. within one recorded day (Date)		()	()	()	()	()	()	()	()	()	()	()	()	()
Max. intensity	6 hr (Date)	()	()	()	()	()	()	()	()	()	()	()	()	()
	3 hr (Date)	()	()	()	()	()	()	()	()	()	()	()	()	()
	1 hr (Date)	()	()	()	()	()	()	()	()	()	()	()	()	()
Summary of all recorded years starting from 19 ~ 19														
Average														
Max. (Year)		()	()	()	()	()	()	()	()	()	()	()	()	()
Min. (Year)		()	()	()	()	()	()	()	()	()	()	()	()	()
Daily Max.	1-day				2-day			3-day						Original

DAILY RAINFALL RECORD

Station: Kan Kan

River Basin Basin # Station # Location N. ° ' E. ° ' E.L. m

Station Site Kan Kan Drainage Area Km² Year 1966

Day	Month	Jan	Feb	Mar	Apr	May	June	Jul	Aug	Sept	Oct	Nov	Dec	Annual
1							9.8	52.4		41.3				
2									26.1	1.6	0.2			
3					0.2	2.1	26.7	12.4	2.3					
4							0.2	0.8	31.6		1.8			
5						6.0	20.9		7.8	8.7	4.7			
6					8.0		5.4	0.8		6.5	5.9			
7									10.7	28.4	4.9			
8								1.5	4.6		0.5			
9							28.5		31.8		1.0			
10							11.1	8.4	23.7	5.1	2.5			
11							12.1	2.3	35.8	2.3	15.4	1.6		
12						12.9		0.6	10.9	13.4	8.9			
13							0.7	13.8		6.5	22.8			
14			23.8				1.7	18.6						
15						19.4		2.9	5.0					
16						1.3	1.5	27.0	7.2	20.7				
17							9.4	10.5	11.6	1.2				
18						68.0		14.0	8.2	0.2	3.7			
19			15.9					4.1	12.0					
20				1.8	14.8	2.0			4.2	3.4				
21			14.0		14.4	2.3	0.9	22.3	7.3	4.8				
22						5.2	6.8		8.1	0.8				
23			4.8						27.8	5.3				
24										19.7	20.1			
25			2.8			0.2		31.5	4.5		0.2			
26								6.2	11.9	18.6				
27						21.6	24.3		19.9	1.5	1.3			
28						0.3		41.2	9.5	1.0				
29						2.7	13.6			14.9	30.0			
30							1.7			1.5				
31						2.0		2.0	0.8		9.3			
Total				62.3	10.0	107.9	185.1	145.1	409.1	107.4	113.8	1.6		
Number of rainy day														
Max. within one recorded day (Date)	()	()	()	()	()	()	()	()	()	()	()	()	()	()
Max. in 6 hr (Date)	()	()	()	()	()	()	()	()	()	()	()	()	()	()
Max. in 3 hr (Date)	()	()	()	()	()	()	()	()	()	()	()	()	()	()
Max. in 1 hr (Date)	()	()	()	()	()	()	()	()	()	()	()	()	()	()
Summary of all recorded years starting from 19 ~ 19														
Average														
Max. (Year)	()	()	()	()	()	()	()	()	()	()	()	()	()	()
Min. (Year)	()	()	()	()	()	()	()	()	()	()	()	()	()	()
Daily Max.	1-day			2-day			3-day				Original			

DAILY RAINFALL RECORD

Station: Kan Kan

River Basin _____ Basin # _____ Station # _____ Location N. ° ' E. ° ' E.L. _____ m

Station Site Kan Kan Drainage Area _____ Km² Year 1967

Month Day	Jan	Feb	Mar	Apr	May	June	Jul	Aug	Sept	Oct	Nov	Dec	Annual
	1			31.3		2.1		19.5	99.1	6.4			
2													
3			0.6		2.0			10.3		4.4			
4		0.7				6.1	6.1	4.0	10.3	26.6			
5							1.6	56.1	5.1	11.9			
6						1.8	43.6	9.4		10.6			
7								4.3	13.0	0.2			
8				1.4		1.8	8.1		3.7	7.9	17.6		
9									14.5				
10				1.9		23.9	27.7	36.3	20.9		0.2		
11					16.2		1.9	1.0	18.8	29.6	12.3		
12					1.6	36.9			0.1	13.0	2.7		
13				39.4				57.6	43.2	2.3			
14						27.7	0.1	5.9	17.0				
15						0.7			18.8	5.9			
16					26.1		66.1	24	13.3	13.3			
17						17.9	0.7	41.4	0.4	16.6			
18					3.5	1.0	7.9	6.3	1.9	3.0			
19						3.9	3.8		2.0	1.0			
20					2.2	25.1	7.8		0.7		0.6		
21				8.2	20.5	28.0	2.3	21.8	21.7	5.3			
22						22.4	0.9	0.5	28.6	0.7			
23				1.3		4.4		15.0	26.7	3.0			
24						8.4		17.9	59.5				
25				30.6		7.8	7.5	24.1	21.2				
26		0.1		0.5		2.9	13.2	0.5		0.4			
27					45.1		25.9	3.3	0.9	0.3			
28		3.1		4.5	1.0	0.4	23.0	5.9	44.2	1.0			
29				2.7		17.5		0.1	5.4	3.8			
30							12.8	1.0	4.6	47.6			
31							20.6	8.9		6.1			
Total		3.4	31.9	90.5	120.3	251.6	241.1	401.7	405.1	240.4	33.4		
Number of rainy day													
Max. within one recorded day (Date)	()	()	()	()	()	()	()	()	()	()	()	()	()
Max. intensity	6 hr (Date)	()	()	()	()	()	()	()	()	()	()	()	()
	3 hr (Date)	()	()	()	()	()	()	()	()	()	()	()	()
	1 hr (Date)	()	()	()	()	()	()	()	()	()	()	()	()
Summary of all recorded years starting from 19 ~ 19													
Average													
Max. (Year)	()	()	()	()	()	()	()	()	()	()	()	()	()
Min. (Year)	()	()	()	()	()	()	()	()	()	()	()	()	()
Daily Max.	1-day			2-day			3-day			Original			

DAILY RAINFALL RECORD

Station: Kan Kan

River Basin _____ Basin # _____ Station # _____ Location N. ° ' E. ° ' E.L. _____ m

Station Site Kan Kan Drainage Area _____ km² Year 1968

Day	Month	Jan	Feb	Mar	Apr	May	June	Jul	Aug	Sept	Oct	Nov	Dec	Annual
	Day													
1								12.9	14.7	1.6	10.3	20.5		
2						45.3	6.0		2.1	14.3	0.8			
3					1.1	10.5	3.7		2.0	4.3				
4						8.2		8.6	13.0	1.2	40.6	9.3		
5				41.6			10.9	5.8	0.2		2.7			
6							4.6			30.4	29.9	15.0	1.3	
7						6.6								
8			1.8					21.0	25.9	6.2				
9			0.4					28.0	1.0	0.8				
10							1.5				25.8			
11					23.5		29.2		20.1	4.0				
12						8.9	28.3		25.9	98.0	9.3			
13							3.0	3.0	2.4	2.3	4.6			
14							21.8			6.6				
15					12.1	5.8	7.6	15.5		2.7				
16					0.1		14.0	0.9	56.6					
17					11.6		6.3			18.8	12.0			
18								0.7		66.8				
19						20.6		1.9	39.9	27.9	9.0			
20						3.2		4.2	1.2	6.4	0.6			
21						1.5	27.2	0.2		46.9	1.0	10.1		
22				18.7			7.7		0.2	0.8		7.5		
23			0.4		6.1		17.0			20.0				
24			2.7			0.3		3.0	25.0					
25						0.2	4.3	0.7		20.9				
26						4.6	5.0	7.9		0.9				
27						34.5	1.4	21.6	5.8		21.6			
28					1.7			6.8	18.6	11.4				
29					2.3	0.4	0.3	20.7	18.3	0.3	1.2			
30						21.3	10.7	4.3	44.7					
31						4.3		72.4	12.4					
Total			5.3	41.6	82.5	174.2	220.5	247.1	241.1	293.2	170.4	12.1	1.3	
Number of rainy day														
Max. within one recorded day (Date)		()	()	()	()	()	()	()	()	()	()	()	()	()
Max. intensity	6 hr (Date)	()	()	()	()	()	()	()	()	()	()	()	()	()
	3 hr (Date)	()	()	()	()	()	()	()	()	()	()	()	()	()
	1 hr (Date)	()	()	()	()	()	()	()	()	()	()	()	()	()
Summary of all recorded years starting from 19 ~ 19														
Average														
Mar. (Year)		()	()	()	()	()	()	()	()	()	()	()	()	()
Min. (Year)		()	()	()	()	()	()	()	()	()	()	()	()	()
Daily Max.	1-day				2-day			3-day				Original		

DAILY RAINFALL RECORD

Station: Kan Kan

River Basin _____ Basin # _____ Station # _____ Location N. ° ' E. ° ' E.L. _____ m

Station Site Kan Kan Drainage Area _____ Km² Year 1969

Day \ Month	Jan	Feb	Mar	Apr	May	June	Jul	Aug	Sept	Oct	Nov	Dec	Annual
	1					7.0		30.2		4.9			
2					0.4			12.0	5.5	25.3	0.1		
3							9.2	2.5	36.8				
4							0.2		13.3	8.5	16.5		
5					40.3			22.8		0.7			
6			0.5		1.6	7.7	57.4		14.8				
7						16.2		1.1	0.7	5.2			
8							23.7	1.3	1.7	6.1			
9						22.5	2.0	6.8	13.7				
10								12.2	19.3	12.0			
11								2.9	4.8	0.2			
12						4.6	0.9	0.1					
13								10.3		8.6			
14						1.6	2.6	3.1	15.7				
15								46.1		26.2			
16					4.3		2.2	5.0					
17					9.0		38.4	12.7	12.3	24.5			
18						22.9	0.5	3.5	70.0	75.2			
19			7.6		10.2	16.5	5.0			9.6			
20					0.1			1.4		49.9			
21					16.9	22.0		33.9	8.9	9.4			
22							0.1	34.2	30.3	0.2			
23			6.2		17.4	22.5		2.2	24.4	7.2			
24			12.2	7.8			30.5		9.6				
25				3.5	4.5	28.8		1.2	2.4	35.0			
26						13.4	0.4						
27						4.9	0.4	97.1	33.7				
28					13.0	11.5	29.1	0.9	0.4				
29					9.5	0.1	40.8						
30			48.4		4.5	25.5	57.7	8.1	21.5				
31			0.9					0.8					
Total			76.8	11.3	138.7	211.4	298.4	277.1	350.7	303.8	16.6		
Number of rainy day													
Max. within one recorded day (Date)	()	()	()	()	()	()	()	()	()	()	()	()	()
Max. intensity	6 hr (Date)	()	()	()	()	()	()	()	()	()	()	()	()
	5 hr (Date)	()	()	()	()	()	()	()	()	()	()	()	()
	1 hr (Date)	()	()	()	()	()	()	()	()	()	()	()	()
Summary of all recorded years starting from 19 ~ 19													
Average													
Mar. (Year)	()	()	()	()	()	()	()	()	()	()	()	()	()
Min. (Year)	()	()	()	()	()	()	()	()	()	()	()	()	()
Daily Max.	1-day			2-day			3-day			Original			

DAILY RAINFALL RECORD

Station: Kan Kan

River Basin _____ Basin # _____ Station # _____ Location N. ° ' E. ° ' E.L. _____ m

Station Site Kan Kan Drainage Area _____ Km² Year 1970

Month Day	Jan	Feb	Mar	Apr	May	June	Jul	Aug	Sept	Oct	Nov	Dec	Annual
	1							12.3		1.0			
2							6.1		37.1	6.5			
3									28.9	14.3			
4						1.5		10.0	86.8	7.9			
5							28	92	1.0	7.3			
6				18.4					32.1				
7				1.0	12.3	0.6	1.9		0.7	2.4			
8					17.1	11.7	6.5		0.3				
9					12.7	11.0	0.1	24.0	8.5				
10			11.3	11.7				19.3	33.6				
11						43.0		8.0	11.6	4.5			
12			0.4				15.8	0.2					
13													
14							35.1	37.3	4.0	1.0	14.9		
15						26.4		17.5	11.5				
16					3.8			4.4		0.9	7.5		
17						36.2		31.0	5.5	11.5	46.0		
18								10.5	31.5				
19				64.7			43.5	31.2					
20					6.1			6.4					
21							3.7	3.3					
22						9.4	2.1		25.2				
23				2.3					16.8				
24							29.7	34.8	0.3				
25					2.4	12.3	7.6	30.4					
26			15.2				16.4	1.8	31.0	7.0	2.0		
27					26.1	44.0		46.2	6.8				
28					17.5		19.7	21.8	2.5				
29								3.2					
30					37.4			12.0					
31					0.9		4.9	5.5					
Total			31.9	98.1	118.9	213.2	212.1	318.4	426.7	63.3	70.4		
Number of rainy day													
Max. within one recorded day (Date)	()	()	()	()	()	()	()	()	()	()	()	()	()
Max. intensity	6 hr (Date)	()	()	()	()	()	()	()	()	()	()	()	()
	3 hr (Date)	()	()	()	()	()	()	()	()	()	()	()	()
	1 hr (Date)	()	()	()	()	()	()	()	()	()	()	()	()
Summary of all recorded years starting from 19 ~ 19													
Average													
Mar. (Year)	()	()	()	()	()	()	()	()	()	()	()	()	()
Min. (Year)	()	()	()	()	()	()	()	()	()	()	()	()	()
Daily Max.	1-day			2-day			5-day			Original			

DAILY RAINFALL RECORD

Station: Kan Kan

River Basin _____ Basin % _____ Station % _____ Location N. ° ' _____ E. ° ' _____ E.L. _____ m

Station Site Kan Kan Drainage Area _____ km² Year 1971

Month Day	Jan	Feb	Mar	Apr	May	June	Jul	Aug	Sept	Oct	Nov	Dec	Annual
	1				12.5				22.3	2.3			
2							8.5	3.9	29.0	3.4			
3								0.1	2.5	14.2			
4					2.9	1.4		19.0	0.7	0.2			
5								7.9	1.2	9.8			
6							2.8						
7							9.8	15.5	2.5	0.4			
8				29.6	29.8			52.1	10.9				
9								7.8	26.6				
10							43.2	4.3	2.7	15.0			
11			8.5			9.2				4.4			
12		1.4		5.2			5.4	0.1		22.3			
13				8.4	2.0	13.7		38.5	1.1	5.2			
14						3.8	2.7	48.3		6.1			
15						6.0	0.1		13.4				
16									19.6				
17							14.1	3.4	1.1				
18							1.8		15.5				
19				0.2	12.0	1.8		11.7	4.1	9.3			
20					27.9	8.6		2.7			4.2		
21			0.6		5.6	3.6	3.6	1.6	27.0	12.2			
22			3.1		6.4	18.6		39.1	18.7	2.1			
23					2.3	5.6	5.3	20.7	1.8				
24							13.8	6.8	0.9				
25							1.5	7.0			2.8		
26					9.2		1.3	18.8					
27					8.7		45.1	18.1	4.4				
28						4.8		1.5	8.8				
29						3.2	1.1		0.8				
30				33.9	13.2		23.4	20.8	11.5				
31			0.2		1.8		6.1						
Total		1.4	12.4	99.8	121.8	150.3	194.6	472.0	207.1	105.6	7.0		
Number of rainy day													
Max. within one recorded day (Date)	()	()	()	()	()	()	()	()	()	()	()	()	()
Max. intensity	6 hr (Date)	()	()	()	()	()	()	()	()	()	()	()	()
	3 hr (Date)	()	()	()	()	()	()	()	()	()	()	()	()
	1 hr (Date)	()	()	()	()	()	()	()	()	()	()	()	()
Summary of all recorded years starting from 19 ~ 19													
Average													
Max. (Year)	()	()	()	()	()	()	()	()	()	()	()	()	()
Min. (Year)	()	()	()	()	()	()	()	()	()	()	()	()	()
Daily Max.	1-day			2-day			3-day			Original			

DAILY RAINFALL RECORD

Station: Kan Kan

River Basin _____ Basin # _____ Station # _____ Location N. ° ' E. ° ' EL. _____ m

Station Site Kan Kan Drainage Area _____ km² Year 1972

Month Day	Jan	Feb	Mar	Apr	May	June	Jul	Aug	Sept	Oct	Nov	Dec	Annual
	1							0.2	19.8	16.5	14.2		
2							14.4	0.1	6.6				
3						36.5	1.1	6.3		2.1			
4					12.6	14.2			6.0	1.5			
5						0.1			3.4				
6				22.0		2.0	12.2	2.5					
7							9.2		20.9	18.6			
8						1.2	4.2		12.3				
9							10.6	7.7	16.6	1.3			
10					3.2			4.6	4.5				
11					16.1	22.8	20.5	4.7		0.1			
12					0.4	0.5	13.5	3.1					
13							4.0	50.7		5.9			
14					16.0	32.3	1.1	0.5	11.5				
15					1.1		9.7	19.9	0.2	12.4			
16				0.5	0.8	0.1		3.1	2.0	12.9			
17					0.6		2.7	10.5	2.6	4.2			
18				0.1		0.1	8.1	0.7	4.9				
19					16.6	2.1			31.4	18.3			
20			0.8			0.6		5.2	9.6	3.3			
21						27.2	11.1		28.7			1.0	
22				17.2	14.0	8.6	1.4						
23				2.5		6.2	15.5	12.0		1.7			
24			56.3				38.9	4.3					
25			1.7	46.6		24.1							
26				0.9	7.5			11.6	24.4	2.0	5.5		
27					2.5		13.6	22.0			4.6		
28					13.8	1.6	0.8		1.2		0.6		
29						0.3	11.0	22.1	34.4				
30					7.0	9.0	15.7						
31			3.5		35.3		1.1	3.1					
Total			62.3	89.8	147.5	189.5	240.6	214.5	237.5	98.5	10.7	1.0	
Number of rainy day													
Max. within one recorded day (Date)	()	()	()	()	()	()	()	()	()	()	()	()	()
Max. intensity	6 hr (Date)	()	()	()	()	()	()	()	()	()	()	()	()
	3 hr (Date)	()	()	()	()	()	()	()	()	()	()	()	()
	1 hr (Date)	()	()	()	()	()	()	()	()	()	()	()	()
Summary of all recorded years starting from 19 ~ 19													
Average													
Max. (Year)	()	()	()	()	()	()	()	()	()	()	()	()	()
Min. (Year)	()	()	()	()	()	()	()	()	()	()	()	()	()
Daily Max.	1-day			2-day			3-day			Original			

DAILY RAINFALL RECORD

Station: Kan Kan

River Basin _____ Basin # _____ Station # _____ Location N. ° ' E. ° ' E.L. _____ m

Station Site Kan Kan Drainage Area _____ km² Year 1973

Month Day	Jan	Feb	Mar	Apr	May	June	Jul	Aug	Sept	Oct	Nov	Dec	Annual
	1						3.9	29.4	113.1	28.6	2.2		
2						20.0	3.2	2.2	58.5				
3				2.8			7.6		0.4	8.3			
4								67.1		3.7			
5					15.4	5.0			11.3				
6					2.6	13.0	5.1	21.8	12.5	40.7			
7								23.0					
8								10.2	0.1				
9					28.8	29.4	18.1	7.0	22.4	4.0			
10					12.9	3.6		8.1	8.7	2.6			
11					1.3	6.7			4.8				
12						4.3		3.2	14.1				
13								2.6					
14						1.6		3.2		1.3			
15			0.5					5.6	29.1				
16						23.1		14.9	3.2				
17					1.0		1.7	39.9					
18				0.2				11.6					
19					2.3		14.6	6.4	17.4	5.4			
20				1.9			10.8	5.6	2.9				
21			0.4			13.1		2.7					
22							15.3	11.8					
23							5.3		3.3				
24						5.1	3.6	1.3	3.4	13.0			
25					7.3		30.6	7.8	1.4				
26					9.1			6.2					
27				38.2	29.9	32.5	24.0	5.4		38.7			
28						5.7	45.7		18.0				
29				4.2	11.2		23.4	14.4	37.0				
30								7.2					
31					4.8		0.2	4.8					
Total			0.9	47.3	126.6	167.0	238.6	425.1	82.4	119.9			
Number of rainy day													
Max. within one recorded day (Date)	()	()	()	()	()	()	()	()	()	()	()	()	()
Max. intensity	6 hr (Date)	()	()	()	()	()	()	()	()	()	()	()	()
	3 hr (Date)	()	()	()	()	()	()	()	()	()	()	()	()
	1 hr (Date)	()	()	()	()	()	()	()	()	()	()	()	()
Summary of all recorded years starting from 19 ~ 19													
Average													
Max. (Year)	()	()	()	()	()	()	()	()	()	()	()	()	()
Min. (Year)	()	()	()	()	()	()	()	()	()	()	()	()	()
Daily Max.	1-day			2-day			3-day			Original			

DAILY RAINFALL RECORD

Station: Kan Kan

River Basin Basin # Station # Location N. E. E.L. m

Station Site Kan Kan Drainage Area km^2 Year 1974

Month Day	Jan	Feb	Mar	Apr	May	June	Jul	Aug	Sept	Oct	Nov	Dec	Annual
	1						22.2	1.4	6.3	2.4	18.8		
2			1.6			5.5		67.1		11.7			
3				4.1				4.5	37.8	29.7			
4							1.5			0.2			
5							1.8	42.1			0.7		
6							12.9	18.0	42.3	10.6			
7						17.3	26.3	0.8	12.3				
8					1.2		4.3		0.1				
9						13.1			17.2	0.2			
10							3.8	25.7	12.2	10.7			
11						5.1	4.5	2.4	5.1	0.3			
12							72.7	7.7		7.6	3.1		
13					1.4	4.1	2.3	22.5	24.6				
14				6.5		2.8	0.8	0.2	2.1				
15								2.4	90.2				
16			4.2		7.7		11.3	5.9	45.2				
17			26.2	0.3	2.2	15.8	5.9	3.9	42.9				
18							2.6	7.0	89.2				
19							26.6		27.4				
20							3.4	9.4					
21						13.5		3.0					
22								15.2					
23							1.0	3.5	6.0				
24							5.4	4.7	38.6				
25						31.7	29.6	0.6	28.9				
26						7.6			5.5				
27							7.7	27.0	37.9				
28					1.2	28.2	39.4	12.0					
29				8.4	27.9		12.0	0.5	10.7				
30				10.3	1.7		29.7	22.9	7.3				
31								34.1					
Total			12.0	29.6	53.3	116.9	402.9	356.4	593.9	88.8	3.8		
Number of rainy day													
Max. within one recorded day (Date)	()	()	()	()	()	()	()	()	()	()	()	()	()
Max. intensity	6 hr (Date)	()	()	()	()	()	()	()	()	()	()	()	()
	3 hr (Date)	()	()	()	()	()	()	()	()	()	()	()	()
	1 hr (Date)	()	()	()	()	()	()	()	()	()	()	()	()
Summary of all recorded years starting from 19 ~ 19													
Average													
Max. (Year)	()	()	()	()	()	()	()	()	()	()	()	()	()
Min. (Year)	()	()	()	()	()	()	()	()	()	()	()	()	()
Daily Max.	1-day			2-day			3-day			Original			

DAILY RAINFALL RECORD

Station: Kan Kan

River Basin _____ Basin # _____ Station # _____ Location N. ° ' E. ° ' E.L. _____ m

Station Site Kan Kan Drainage Area _____ km² Year 1975

Day \ Month	Jan	Feb	Mar	Apr	May	June	Jul	Aug	Sept	Oct	Nov	Dec	Annual
	1							2.1		5.9	0.8	1.3	
2					0.4		14.2	5.3	1.1				
3										1.3			
4							13.5		25.0	6.0			
5						3.3	16.6	19.8	6.0				
6													
7					0.2		16.0	7.4	0.1				
8					16.1		5.4	9.1	9.4				
9						1.5	45.0		1.9	18.9			
10						21.7		13.3					
11				0.8		18.8		7.2	5.5				
12						5.0	17.0		25.1				
13						14.9	20.6		2.2	10.7			
14								6.7	26.5				
15					9.3	24.9		0.1		3.8			
16					10.9	0.3	19.8	18.1		1.8			
17						12.5			1.3	2.0			
18					37.3	1.1	1.7	8.6	39.6	16.4	7.2		
19							2.4	1.2	13.2	24.8	3.3		
20					17.3	23.1	14.0						
21					1.8		10.6	1.6	12.5	2.8			
22								0.5	23.5				
23			27.5		1.5		0.6		7.7				
24						5.5		42.0	57.0				
25			0.5				8.2	0.8		1.9			
26			3.2			18.3	10.6	11.0	32.8				
27			0.6	17.0	20.9	26.3	14.3	7.6	6.3				
28				5.5	20.7		12.0	0.4					
29				2.7	1.5		4.5		21.0				
30				0.6	7.8	58.9	28.7	1.4					
31							16.5						
Total			33.8	28.6	147.7	236.1	290.3	158.1	370.6	91.2	11.8		
Number of rainy day													
Max. within one recorded day (Date)	()	()	()	()	()	()	()	()	()	()	()	()	()
Max. intensity	6 hr (Date)	()	()	()	()	()	()	()	()	()	()	()	()
	3 hr (Date)	()	()	()	()	()	()	()	()	()	()	()	()
	1 hr (Date)	()	()	()	()	()	()	()	()	()	()	()	()
Summary of all recorded years starting from 19 ~ 19													
Average													
Mar. (Year)	()	()	()	()	()	()	()	()	()	()	()	()	()
Min. (Year)	()	()	()	()	()	()	()	()	()	()	()	()	()
Daily Max.	1-day			2-day			3-day			Original			

DAILY RAINFALL RECORD

Station: Kan Kan

River Basin _____ Basin # _____ Station # _____ Location N. ° ' E. ° ' EL. _____ m

Station Site Kan Kan Drainage Area _____ Sq _____ Year 1976

Month Day	Jan	Feb	Mar	Apr	May	June	Jul	Aug	Sept	Oct	Nov	Dec	Annual
	1						8.5	9.8	20.4		5.1		
2								0.9	22.7	13.2			
3						36.3		28.5	16.9	0.1			
4						8.4		15.1		6.8			
5							9.7						
6					0.2	0.5							
7						1.5		38.2		2.2			
8					5.5	2.6		22.3	5.8	27.2			
9								11.4	23.4	17.7			
10							8.1	0.1					
11										3.3			
12						20.0		9.7	2.4				
13						3.6		11.7	9.0	6.7			
14					21.8	0.4		34.5	13.6	26.5			
15					2.2		0.3	18.5	4.8				
16			2.1			13.0	1.1	40.6	16.2	2.8			
17				38.4				8.5					
18				0.8			3.6	11.4	17.9	25.8			
19						15.6		41.0	3.2	1.7			
20			4.9			8.9	5.5	36.1	3.7	18.7			
21					2.6		1.1			7.2			
22					12.0	16.1	5.8	28.8	11.0	15.9			
23						12.7	10.5	53.8	26.1				
24					16.2	17.2	19.3	3.7	19.7				
25					4.3	3.5	0.1	4.2	6.2	2.2			
26					19.9				11.7				
27				3.7	4.9	8.0		1.6		1.0			
28				16.9			25.7	5.0	1.2	1.8			
29						1.1			4.5				
30				48.5		1.3			5.7				
31					15.0								
Total			7.0	91.4	121.5	179.2	108.6	446.0	225.7	195.9			
Number of rainy day													
Max. within one recorded day (Date)	()	()	()	()	()	()	()	()	()	()	()	()	()
Max. intensity	6 hr (Date)	()	()	()	()	()	()	()	()	()	()	()	()
	3 hr (Date)	()	()	()	()	()	()	()	()	()	()	()	()
	3 hr (Date)	()	()	()	()	()	()	()	()	()	()	()	()
	1 hr (Date)	()	()	()	()	()	()	()	()	()	()	()	()
Summary of all recorded years starting from 19 ~ 19													
Average													
Max. (Year)	()	()	()	()	()	()	()	()	()	()	()	()	()
Min. (Year)	()	()	()	()	()	()	()	()	()	()	()	()	()
Daily Max.	1-day			2-day			3-day			Original			

DAILY RAINFALL RECORD

Station: Kan Kan

River Basin _____ Basin # _____ Station # _____ Location N. ° ' E. ° ' E.L. _____ m

Station Site Kan Kan Drainage Area _____ km² Year 1977

Day	Month	Jan	Feb	Mar	Apr	May	June	Jul	Aug	Sept	Oct	Nov	Dec	Annual
1							63.2	7.8		0.5	21.6			
2						4.3	20.0	9.0		15.2	8.2			
3								4.5		11.6				
4											1.9			
5		0.3						48.3		19.8				
6		5.1				12.5		24.2		9.0				
7		2.2					2.6				8.1			
8							1.0	34.1	78.9					
9									6.4	0.6				
10						4.5		10.2		11.0				
11						0.2			0.3	49.3				
12							15.0	34.6	21.6	2.3	4.0			
13								9.4	20.3	12.8	0.3			
14					0.8		4.0	7.4	2.0	7.6				
15					34.3				5.2	1.5	4.5			
16									12.2	37.4	1.3			
17					0.2					29.4		0.4		
18										18.4				
19								4.6	12.0	9.2	9.9			
20							3.1				4.9			
21										4.3				
22						4.4	23.0	19.1	9.0		5.4			
23							1.3	2.6		7.7				
24														
25						44.2	8.1			9.0				
26							7.9	50.9	5.9	0.4				
27				24.6			24.3		7.1	1.2				
28						4.7	1.8		0.3	2.5				
29				5.8	31.4		7.0		8.8	12.0				
30						6.7		53.8	1.0	6.8				
31						1.7		13.6	22.8					
Total		7.6		30.4	66.7	53.2	176.0	287.0	225.8	27.5	76.1	0.4		
Number of rainy day														
Max. within one recorded day (Date)		()	()	()	()	()	()	()	()	()	()	()	()	()
Max. intensity	6 hr (Date)	()	()	()	()	()	()	()	()	()	()	()	()	()
	3 hr (Date)	()	()	()	()	()	()	()	()	()	()	()	()	()
	1 hr (Date)	()	()	()	()	()	()	()	()	()	()	()	()	()
Summary of all recorded years starting from 19 ~ 19														
Average														
Max. (Year)		()	()	()	()	()	()	()	()	()	()	()	()	()
Min. (Year)		()	()	()	()	()	()	()	()	()	()	()	()	()
Daily Max.	1-day				2-day			3-day			Original			

DAILY RAINFALL RECORD

Station: Kan Kan

River Basin Basin # Station # Location N. E. S. E.L. m

Station Site Kan Kan Drainage Area km² Year 1978

Month Day	Jan	Feb	Mar	Apr	May	June	Jul	Aug	Sept	Oct	Nov	Dec	Annual
	1								18.8	0.6	11.6		
2					2.7			23.6	9.1	23.8			
3						33.6	2.1	28.0	0.1	1.7			
4				2.7	20.2	13.9	7.1	6.3	1.2	8.5			
5										2.1			
6							11.7				4.1		
7						28.9	4.5		10.7				
8							1.2		18.5	0.5			
9								20.6		23.3	7.4		
10							30.9			29.5			
11				14.3	7.4				4.0	0.2			
12					1.7	3.8	3.8	0.8	4.5				
13						5.7		6.6	24.5				
14					23.5			0.1	12.5				
15	1.1					9.0	0.5	13.1		9.9			
16			4.3	2.1									
17			37.1	4.0				0.7	90.7				
18							32.3	2.3	0.2				
19							4.4	1.3	6.9	1.4			
20						25.7		2.8	9.4	66.7			
21					3.0			20.8	19.9	0.2			
22		5.3					11.4	31.4	11.9				
23					11.7		1.0	24.7	6.7				
24						23.6		0.4	1.5	3.5			
25				5.3	3.0	23.8		2.5	0.6				
26						3.5	46.7	76.5					
27						49.7			11.6		0.2		
28				0.3		6.4		5.3					
29			0.7			6.0		26.9		3.1			
30				16.4	14.0	7.5	1.2	32.4	0.2				
31													
Total	1.1	5.3	42.1	75.1	147.2	211.1	134.8	345.9	346.9	197.2	11.7		
Number of rainy day													
Max. within one recorded day (Date)	()	()	()	()	()	()	()	()	()	()	()	()	()
Max. intensity	6 hr (Date)	()	()	()	()	()	()	()	()	()	()	()	()
	3 hr (Date)	()	()	()	()	()	()	()	()	()	()	()	()
	1 hr (Date)	()	()	()	()	()	()	()	()	()	()	()	()
Summary of all recorded years starting from 19 ~ 19													
Average													
Max. (Year)	()	()	()	()	()	()	()	()	()	()	()	()	()
Min. (Year)	()	()	()	()	()	()	()	()	()	()	()	()	()
Daily Max.	1-day			2-day			3-day			Original			

**Table IV-2 Daily Rainfall Record at Kissidougou
(1964 - 1978)**

DAILY RAINFALL RECORD

Station: Kissidougou

River Basin Basin # Station # Location N. E. EL. m

Station Site Kissidougou Drainage Area Km² Year 1964

Day \ Month	Jan	Feb	Mar	Apr	May	June	Jul	Aug	Sept	Oct	Nov	Dec	Annual
1				11.5		1.5	10.0	52.5	28.5			1.2	
2			0.7	1.3		6.2	17.7	5.6	3.1		5.4		
3						3.0	1.2	5.0	24.7	22.5			
4					12.2	1.1	3.7	20.5	9.9				
5					18.7	13.5		4.2	23.0	28.7	18.7		
6					24.1		13.6	0.3	3.4	0.7	2.5		
7						24.1		1.6	14.8	1.5	3.8		
8						1.5		30.4		0.3	9.8		
9						36.4		39.2		17.6	13.7		
10			9.9			15.4		0.7		14.5			
11					12.4	15.3			23.8	14.4			
12					64.7	1.6	1.5		4.0			10.3	
13					39.4	7.0	0.3		15.0	6.6	13.1	2.1	
14					10.0	5.8	45.7	0.5	0.5		5.1		
15			8.4		22.7	1.1	24.0	39.8	6.8			1.8	
16						7.2	3.5	0.3		7.6			
17					0.7	11.7	12.7	7.0	61.8		15.4		
18					2.2		2.2	11.7	55.9	4.3			
19				8.5	0.5	5.0		7.6	27.0	5.2			
20			0.2	10.6	1.7	2.4	10.1	19.9	12.7	0.4		0.3	
21			10.2		11.4	18.7	0.6	1.7	0.5	8.5	3.3		
22					3.5	8.6		1.8	21.5	4.5		11.4	
23						15.1	9.9	3.1	3.5			17.0	
24					2.9	1.2	0.6	4.2	23.6				
25				10.5	0.9	3.8	5.4	0.6	0.5		6.2		
26				4.2	20.0	12.5	3.2		24.7	2.5	1.5		
27						13.3	1.2	8.4	1.5	3.2			
28	0.3		1.7	2.5	2.6	4.8	2.4	2.3	3.0	7.2			
29					8.8	1.5	5.5	33.7	2.6				
30				2.8	9.9	0.7	15.6	5.8				5.8	
31					6.3		1.1	3.0		15.7			
Total	0.3		31.1	52.9	266.6	40.0	190.7	311.4	428.0	165.9	11.2	71.1	
Number of rainy day													
Max. within one recorded day (Date)	()	()	()	()	()	()	()	()	()	()	()	()	()
Max. in period by	6 hr (Date)	()	()	()	()	()	()	()	()	()	()	()	()
	3 hr (Date)	()	()	()	()	()	()	()	()	()	()	()	()
	1 hr (Date)	()	()	()	()	()	()	()	()	()	()	()	()
Summary of all recorded years starting from 19 ~ 19													
Average													
Max. (Year)	()	()	()	()	()	()	()	()	()	()	()	()	()
Min. (Year)	()	()	()	()	()	()	()	()	()	()	()	()	()
Daily Max.	1-day			2-day			3-day			Original			

DAILY RAINFALL RECORD

Station: Kissidougou

River Basin _____ Basin # _____ Station # _____ Location N. ° ' _____ E. ° ' _____ E.L. _____ m

Station Site Kissidougou Drainage Area _____ Km² Year 1965

Day \ Month	Jan	Feb	Mar	Apr	May	June	Jul	Aug	Sept	Oct	Nov	Dec	Annual
	Jan	Feb	Mar	Apr	May	June	Jul	Aug	Sept	Oct	Nov	Dec	
1		37.9		3.3	10.7	1.4	27.0	22.5	30.4	5.8	18.9		
2			1.7		5.7	38.2	41.2	6.7	5.0		11.9		
3				8.3		4.7	0.6	0.2	8.8	15.4	0.1		
4				0.3		8.1	13.4			11.2	6.8		
5			3.9		10.3					4.3	6.2		
6				12.4			1.1	76.9		10.4			
7				23.4	2.4	21.4			24.4	1.8			
8					3.2		3.5	4.3	13.3	29.3			
9						22.3	1.8	7.0	7.3	4.3			
10	0.6					36.2	0.1	13.3	11.6	0.2			
11	7.8					12.3		1.3	1.9	1.4			
12									2.1	0.8	26.1		
13					10.1		28.8		29.4				
14				4.8	4.3	69.6		2.5	9.1	10.8			
15						0.3	4.4	7.4	12.3	14.8			
16					90.5			18.0	11.0	29.1			
17					21.9		50.0	5.8	0.6	9.4			
18					30.0	25.5	26.8	7.1	11.0	3.0			
19						1.6	4.3	3.1	7.1	18.0			
20					2.8	13.1	0.1	18.4	9.7	6.2			
21				13.2		0.8		25.4	10.6	17.5			
22				2.4	1.8		6.3		4.0	4.7			
23		32.4			1.3	13.2	5.6	1.5	33.4	23.2			
24							0.3	19.9	14.4				
25					11.7	0.5		0.2	23.6	22.9			
26						2.4	0.7	0.6	24.9				
27				3.5	9.7	12.8		18.6	12.0	5.3			
28					16.7	0.1		22.0	5.2	10.1			
29	17.0					5.1		13.1	10.0	7.0			
30			7.6		48.0	0.5		2.9	17.9	2.2			
31	14.8							0.3					
Total	40.2	70.3	13.2	71.6	290.1	200.1	228.9	299.0	253.2	268.1	70.0		
Number of rainy day													
Max. within one recorded day (Date)	()	()	()	()	()	()	()	()	()	()	()	()	()
Max. intensity	6 hr (Date)	()	()	()	()	()	()	()	()	()	()	()	()
	3 hr (Date)	()	()	()	()	()	()	()	()	()	()	()	()
	1 hr (Date)	()	()	()	()	()	()	()	()	()	()	()	()
Summary of all recorded years starting from 19 ~ 19													
Average													
Max. (Year)	()	()	()	()	()	()	()	()	()	()	()	()	()
Min. (Year)	()	()	()	()	()	()	()	()	()	()	()	()	()
Daily Max.	1-day			2-day			3-day			Original			

DAILY RAINFALL RECORD

Station: Kissidougou

River Basin Basin # Station # Location N. ° ' E. ° ' EL. m

Station Site Kissidougou Drainage Area km² Year 1966

Month Day	Jan	Feb	Mar	Apr	May	June	Jul	Aug	Sept	Oct	Nov	Dec	Annual
	1					16.5	18.0						
2				40.2		6.8	2.3	9.6					
3					4.0	22.0	4.1	9.0					
4				0.7		9.2	23.1						
5				13.5	8.9			9.4					
6					26.7	21.9	21.0						
7				10.6	30.2	9.8	1.6						
8					17.0		2.3	16.7					
9				1.9	13.8		0.8	87.2					
10				4.1		27.9	1.5	18.2					
11			11.0			4.6	16.4	22.5					
12						4.6	11.2	6.0					
13						27.0	2.8	20.0					
14			18.0			5.2							
15					16.4			13.5					
16			10.9				55.8	8.0					
17					0.1	16.8		22.6					
18					4.5	15.0		15.9					
19			13.1	38.1		2.3	42.7	10.2					
20				1.9	10.5	5.9		0.3					
21					2.2	14.9		27.8					
22						12.8	6.0						
23		11.6	43.8				6.0	4.6					
24		5.4	0.1				7.5						
25					4.3	5.3	21.8						
26			11.1		28.7	19.2		9.2					
27					2.9	42.0	10.3						
28						9.0	5.2	2.7					
29					7.4	34.1	35.1	13.8					
30					1.1	14.6	10.1						
31							9.2	9.8					
Total													
Number of rainy day		17.0	108.0	111.0	195.2	348.9	296.8	348.0					
Max. within one recorded day (Date)	()	()	()	()	()	()	()	()	()	()	()	()	()
Max. intensity	6 hr (Date)	()	()	()	()	()	()	()	()	()	()	()	()
	3 hr (Date)	()	()	()	()	()	()	()	()	()	()	()	()
	1 hr (Date)	()	()	()	()	()	()	()	()	()	()	()	()
Summary of all recorded years starting from 19 ~ 19													
Average													
Max. (Year)	()	()	()	()	()	()	()	()	()	()	()	()	()
Min. (Year)	()	()	()	()	()	()	()	()	()	()	()	()	()
Daily Max.	1-day			2-day			3-day			Original			

DAILY RAINFALL RECORD

Station: Kissidougou

River Basin _____ Basin # _____ Station # _____ Location N. ° ' E. ° ' E.L. _____ m

Station Site Kissidougou Drainage Area _____ km² Year 1967

Day	Month	Jan	Feb	Mar	Apr	May	June	Jul	Aug	Sept	Oct	Nov	Dec	Annual
1														
2								0.1			9.0	2.0		
3					2.2	1.0		14.0	0.7	2.1	24.9	9.2		
4					2.0	69.8	12.6	2.7		25.2	6.1			
5						1.5	16.9		51.6	11.8	48.1	2.1		
6							11.8	1.7	0.5		4.9			
7										4.0		2.0		
8								16.5	0.1		15.1			
9					6.9	21.0	0.1	10.2	20.5	12.3		14.0		
10						22.2		0.9	0.4	4.9	47.0	16.9		
11					0.8		29	20.8			5.0	16.1		
12					0.5	2.2				22.2	8.6			
13						16.0	4.0		20.7	5.9	1.1			
14					16.5				11.0	8.2	1.5			
15					0.1	13.6				12.4				
16										9.5	15.6			
17								4.0		20.9	23.4			
18						0.4	1.1	5.6	22.5	11.0	0.5			
19					1.5		1.4	75.2	11.7	23.5	19.1			
20								0.7		64.0				
21					2.0	17.7	0.5	19.5		42.9	24.0			
22					5.6		7.7		25.0	1.8	35.0			
23						12.2	10.0		2.2	10.3	2.1			
24					18.4	15.5	2.2		2.1	34.0	2.3			
25						1.3	15.9			16.0				
26					45.1	2.2	0.3	12.1	5.0	6.7				
27						6.5	7.3		1.9	20.0	26.3			
28						7.3	1.5	6.1	0.7	10.3				
29								0.1	4.0	13.7				
30					20.1		56.3	23.3	5.2	17.0	15.5			
31					2.0		4.1	0.2	17.9	24.5	2.0			
Total					123.7	220.4	56.6	234.6	218.9	514.1	347.1	12.3		
Number of rainy day														
Max within one recorded day (Date)														
Max intensity by 6 hr (Date)														
3 hr (Date)														
1 hr (Date)														
Summary of all recorded years starting from 19 ~ 19														
Average														
Max. (Year)														
Min. (Year)														
Daily Max.	1-day				2-day			3-day					Original	

DAILY RAINFALL RECORD

Station: Kissidougou

River Basin Basin # Station # Location N. ° ' E. ° ' E.L. m

Station Site Kissidougou Drainage Area Km² Year 1968

Month Day	Jan	Feb	Mar	Apr	May	June	Jul	Aug	Sept	Oct	Nov	Dec	Annual
	1						47.5		27.4	10.8		27.6	
2				18.0	28.2	13.5	8.0	3.5	30.0	1.7			
3				42.1	0.1	28.0				4.5	0.5		
4						22.9	15.0	40.8	8.0	29.0	46.0		
5						20.3	15.2				1.7		
6					11.8	13.0			20.7	46.7			
7						6.5		2.0	1.2	2.0			
8		14.5			0.3		2.5	11.7	2.0	9.4	2.6		
9		14.0			1.0		44.5	2.0	40.0	10.0			
10					12.2		0.1		26.5	10.9			
11				3.9		0.8		4.9		10.1			
12			4.5	0.4	4.5	92.0		10.0	4.2	0.9	2.1		
13				1.3		3.4	4.0	3.2		1.8			
14				0.8		20.2	2.3	0.5	11.8		0.9		
15					8.6	18.0	15.0		23.7	1.1	4.0		
16				11.5		6.6		3.6		5.0	26.0		
17				7.1		8.5		2.2	3.0	11.3			
18							55.6	2.0	21.6	6.5			
19					16.9	18.0	9.6	29.9	15.3	16.5			
20					15.0		49.0						
21					43.1	37.0	2.2	9.3	2.4	6.0			
22			1.5	3.0		31.3		3.0	4.6	26.1	47.8		
23					17.4	48.3	0.2	8.3	10.3	18.0	36.5		
24			13.0	2.8	14.2	18.0	1.7	15.0		17.2			
25		9.1	1.5		15.1	8.0	17.0		0.7				
26				6.8	19.9	0.4		2.4	7.7		11.4		
27					2.0	29.0	36.3	35.3	17.2	4.1			
28				2.2	18.6		10.2	10.0	6.7	8.5			
29				5.8	17.5		3.5	4.5	19.7	1.1			
30				14.5	4.6	11.2	0.7	3.6	1.8				
31			1.5		11.2		11.7			2.3			
Total		37.6	22.0	120.2	362.2	601.4	304.5	235.1	290.9	263.7	207.1		
Number of rainy day													
Max. within one recorded day (Date)	()	()	()	()	()	()	()	()	()	()	()	()	()
Max. intensity	6 hr (Date)	()	()	()	()	()	()	()	()	()	()	()	()
	3 hr (Date)	()	()	()	()	()	()	()	()	()	()	()	()
	1 hr (Date)	()	()	()	()	()	()	()	()	()	()	()	()
	1 hr (Date)	()	()	()	()	()	()	()	()	()	()	()	()
Summary of all recorded years starting from 19 ~ 19													
Average													
Max. (Year)	()	()	()	()	()	()	()	()	()	()	()	()	()
Min. (Year)	()	()	()	()	()	()	()	()	()	()	()	()	()
Daily Max.	1-day			2-day			3-day			Original			

DAILY RAINFALL RECORD

Station: Kissidougou

River Basin Basin # Station # Location N. ° ' E. ° ' E.L. m

Station Site Kissidougou Drainage Area km² Year 1969

Day	Month												Annual
	Jan	Feb	Mar	Apr	May	June	Jul	Aug	Sept	Oct	Nov	Dec	
1						12.0		6.3	6.5				
2					15.8			3.0	0.3	5.4			
3						2.0	0.5	0.2		8.1			
4				5.7		6.0	11.2			5.7			
5			21.0		4.5	45.5		16.6	47.2	27.1			
6	0.4		4.3	34.5	28.7	19.9	29.5	15.5	19.8	18.0			
7						9.0	9.7	46.6	12.0	8.0			
8							0.2	17.2	3.8	9.0			
9					19.7		13.9		3.9	3.8			
10					1.7	16.0	22.3	24.2	3.0	4.2			
11		36.3				4.0	0.4	4.7	11.9	2.5			
12								0.7	5.1	17.5			
13		12.7				16.2	18.8	19.5		5.5			
14						2.5	5.0	7.8	23.7				
15				0.3		2.3	72.5	0.8	16.7	23.7			
16					1.1			18.6	35.9	2.4			
17		35.5			4.5	16.0	43.5	24.0	2.0	15.0			
18			10.0		8.8	7.2	14.0	9.4	23.7				
19			12.0		3.5		24.6						
20					47.0		71.2	20.5		43.6			
21						7.5		47.9	10.5	10.3			
22				20.3	8.8	2.0	21.3	16.1	41.2	7.6			
23		1.2			1.0	29.6	0.6	1.4		1.8			
24			9.0				3.5		18.8	2.7			
25			6.0	16.2						7.5			
26			8.5	14.4		15.0	2.0	10.9		13.6			
27					7.0	3.4	2.8		22.0				
28					20.0	30.1	4.6	18.3	18.0				
29					29.5			34.2	6.8	4.3			
30						14.7		14.9	7.6				
31			32.9		2.0								
Total	0.4	85.7	103.7	91.4	58.6	269.9	372.1	377.5	394.4	247.3			
Number of rainy day													
Max. within one recorded day (Date)	()	()	()	()	()	()	()	()	()	()	()	()	()
Max. intensity 6 hr (Date)	()	()	()	()	()	()	()	()	()	()	()	()	()
3 hr (Date)	()	()	()	()	()	()	()	()	()	()	()	()	()
1 hr (Date)	()	()	()	()	()	()	()	()	()	()	()	()	()
Summary of all recorded years starting from 19 ~ 19													
Average													
Max. (Year)	()	()	()	()	()	()	()	()	()	()	()	()	()
Min. (Year)	()	()	()	()	()	()	()	()	()	()	()	()	()
Daily Max.	1-day				2-day			5-day			Original		

DAILY RAINFALL RECORD

Station: Kissidougou

River Basin _____ Basin # _____ Station # _____ Location N. ° ' E. ° ' E.L. _____ m

Station Site Kissidougou Drainage Area _____ km² Year 1970

Day	Month	Jan	Feb	Mar	Apr	May	June	Jul	Aug	Sept	Oct	Nov	Dec	Annual
1							20.3	27.7						
2							6.5	36.7						
3						0.5	20.2							
4								20.3						
5								1.4						
6						31.1	18.8							
7							3.0	5.9						
8		0.8					4.4	9.9						
9						28.5	1.9	19.7						
10						7.5		20.1						
11							4.9	8.0						
12								17.7						
13														
14						12.1		10.0						
15								10.6						
16							4.3	11.8						
17						1.9	20.4	5.2						
18							2.1	5.7						
19														
20														
21								16.5						
22							13.8	12.1						
23								2.3						
24						5.8	24.7							
25						30.8	1.4	26.9						
26						16.5	0.1	1.1						
27							12.5							
28						17.7	0.8							
29						11.8								
30														
31						1.1		5.9						
Total		0.8				165.3	110.1	275.7						
Number of rainy day														
Max. within one recorded day (Date)		()	()	()	()	()	()	()	()	()	()	()	()	()
Max. intensity	6 hr (Date)	()	()	()	()	()	()	()	()	()	()	()	()	()
	3 hr (Date)	()	()	()	()	()	()	()	()	()	()	()	()	()
	1 hr (Date)	()	()	()	()	()	()	()	()	()	()	()	()	()
Summary of all recorded years starting from 19 ~ 19														
Average														
Max. (Year)		()	()	()	()	()	()	()	()	()	()	()	()	()
Min. (Year)		()	()	()	()	()	()	()	()	()	()	()	()	()
Daily Max.	1-day				2-day			3-day			Original			

DAILY RAINFALL RECORD

Station: Kissidougou

River Basin _____ Basin # _____ Station # _____ Location N. ° ' E. ° ' E.L. _____ m

Station Site Kissidougou Drainage Area _____ km² Year 1971

Day \ Month	Jan	Feb	Mar	Apr	May	June	Jul	Aug	Sept	Oct	Nov	Dec	Annual
1								8.0	22.3	19.4			
2						3.1		6.2	26.3	2.2			
3								12.0		23.9		0.5	
4						18.3	1.3	13.5	0.8		1.2		
5							12.0	4.8	12.8	11.2		45.0	
6							8.7	0.4	0.1	2.3		0.7	
7							15.7	29.7	6.2	2.5			
8								22.2		0.4	8.0		
9							19.7	2.6	1.9				
10						17.3	4.9		12.7	0.3			
11						6.9		0.8					
12								73.4	5.0	15.8			
13						2.0		13.3	20.2	0.2	22.6	0.5	
14						8.4	1.4	0.9		1.0		2.7	
15						21.2	6.3		28.9	27.8	2.9		
16						44.9		4.3		7.9			
17							5.0	0.2	20.9		0.6		
18						5.7	5.7	0.7	23.2		0.2		
19						5.4	40.4	1.7	11.3	14.5	2.8		
20						0.7	0.1	17.3	14.1		2.0		
21						28.0	15.7	27.8	12.2	20.9			
22						3.6	8.2	8.7	1.1		12.9		
23						29.2		20.4			1.0		
24							3.5	1.2	14.9		68.0		
25							2.9	8.9	2.4		49.6		
26							10.8	12.6			4.4		
27						0.3		17.3	9.0		31.7		
28									18.5				
29						0.1	3.7		5.6	0.8			
30						10.4	8.7	11.7	0.6		0.5		
31							0.9						
Total						263.5	225.6	366.6	298.0	151.1	208.4	55.4	
Number of rainy day													
Max. within one recorded day (Date)	()	()	()	()	()	()	()	()	()	()	()	()	()
Max. Intensity	6 hr (Date)	()	()	()	()	()	()	()	()	()	()	()	()
	3 hr (Date)	()	()	()	()	()	()	()	()	()	()	()	()
	1 hr (Date)	()	()	()	()	()	()	()	()	()	()	()	()
Summary of all recorded years starting from 19 ~ 19													
Average													
Max. (Year)	()	()	()	()	()	()	()	()	()	()	()	()	()
Min. (Year)	()	()	()	()	()	()	()	()	()	()	()	()	()
Daily Max.	1-day			2-day			3-day			Original			

DAILY RAINFALL RECORD

Station: Kissidougou

River Basin Basin # Station # Location N. E. S. E.L. m

Station Site Kissidougou Drainage Area km² Year 1972

Month Day	Jan	Feb	Mar	Apr	May	June	Jul	Aug	Sept	Oct	Nov	Dec	Annual
	1						2.9	18.1	27.2	3.2	0.3	0.2	
2					15.9	4.2	9.2		29.2	3.7			
3					0.6	13.0	3.7		1.1				
4					29.6	26.7		3.9	42.8	4.5			
5						5.8	8.0		7.1	0.5			
6				1.5	12.4	0.6	7.0	6.1					
7				1.8	3.4	15.2	5.6		18.5	6.4	0.1		
8		0.9					0.8		4.5	9.7			
9		1.9		20.4	10.2	0.2	6.9	51.9	7.6	2.8			
10				38.8	21.0	6.6	4.4	5.3	22.4	12.8	0.5		
11			0.2		1.4	32.3	6.5	18.5	12.8	3.0			
12				3.0				0.8	12.5	2.2			
13				35.4				10.1		26.2			
14						1.9	18.7		37.7	21.5			
15				1.0		2.9	0.2		3.2	1.1			
16				3.8	2.5	16.9	28.0	23.4	8.7	6.3			
17		1.8			0.8	1.2		1.0	15.7	38.1	0.6		
18	0.4	0.5	0.3	32.1	5.8	2.1	43.1	1.1	16.2	14.6			
19		0.6	0.6		2.6		0.6	0.8	0.1	4.6			
20			3.5	8.2		2.4		69.2	2.3				
21			1.3	3.3			32.5		13.3				
22				20.3	8.8	0.1	35.8		16.2	2.2			
23				29.7		8.2	2.4	24.7	1.1	4.8			
24		2.5	1.2		6.0	10.7	10.0	1.6	5.5	18.3			
25				11.7	10.6	14.9		1.7			6.2		
26				4.8	5.0	36.9		4.1	2.8	1.7			
27			9.6	18.6	11.8		18.3	9.5	4.4	12.2	14.8		
28			13.1		2.4	3.5		1.0	35.4		0.7		
29				20.4	4.5		1.8	11.9	11.0		14.3		
30			3.0		10.0	3.8	2.3	67.4	34.8				
31			76.1		22.6		0.1	2.8		2.0			
Total	0.4	9.7	108.9	257.8	107.9	213.0	264.0	349.1	369.1	200.5	37.4		
Number of rainy day													
Max. within one recorded day (Date)	()	()	()	()	()	()	()	()	()	()	()	()	()
Max. intensity	6 hr (Date)	()	()	()	()	()	()	()	()	()	()	()	()
	3 hr (Date)	()	()	()	()	()	()	()	()	()	()	()	()
	1 hr (Date)	()	()	()	()	()	()	()	()	()	()	()	()
Summary of all recorded years starting from 19 ~ 19													
Average													
Max. (Year)	()	()	()	()	()	()	()	()	()	()	()	()	()
Min. (Year)	()	()	()	()	()	()	()	()	()	()	()	()	()
Daily Max.	1-day			2-day			3-day						Original

DAILY RAINFALL RECORD

Station: Kissidougou

River Basin _____ Basin # _____ Station # _____ Location N. ° ' E. ° ' E.L. _____ m

Station Site Kissidougou Drainage Area _____ Km² Year 1973

Month Day	Jan	Feb	Mar	Apr	May	June	Jul	Aug	Sept	Oct	Nov	Dec	Annual
	1						32.4	5.1			3.6	7.4	
2					2.9	26.7	22.4	8.1	12.7		16.6		
3				4.7	10.7		7.4	0.6	2.2	5.4	24.9		
4							0.4	0.3	0.1	9.1	0.7		
5					1.5	4.2	14.3	4.5	36.8	15.8			
6					13.4		20.5	2.6	3.9		15.2		
7					10.7		2.7	0.8			14.6		
8								8.1	26.7	6.6			
9					14.2	32.3	8.1	31.7	8.6	4.4			
10				0.6	40.1		24.6	31.4	2.3	8.3	15.0		
11					0.4	9.7			31.9	9.4			
12					10.2	0.3		0.4	17.1	10.8	5.4		
13				7.9	13.0	1.5	0.7	34.3	18.3	0.4			
14					3.7	1.7		4.7	1.7		0.1		
15				5.2	10.2	1.3		0.4	17.2	0.9	0.1		
16					13.8	25.6	32.5		34.3		0.1		
17				45.9	21.3	3.8	61.8	0.6					
18			16.2		12.9	16.0			13.1	0.9	0.1		
19				10.5	2.8	1.0	2.4	2.2	10.1	9.1			
20			4.2		0.4			15.4	16.4				
21							6.5	17.4	0.2	3.4			
22						5.4	33.8	3.2		3.1	0.4		
23								2.6	10.0	12.8			
24			4.5			1.1	20.5	0.8	9.0	18.6		40.9	
25					19.4		29.2	15.2	1.9	13.9		0.8	
26				1.1			4.3	17.4	26.0	5.4			
27					0.9		2.2	0.5	7.3	4.2		5.6	
28					1.4	25.9	17.3	3.0	6.1	23.7			
29						3.1	4.8	2.9	0.7				
30								0.2	8.8				
31			8.3		0.9		0.4	5.7					
Total			33.2	75.9	204.8	192.0	351.9	216.0	323.4	169.8	100.6	47.3	
Number of rainy day													
Max. within one recorded day (Date)	()	()	()	()	()	()	()	()	()	()	()	()	()
Max. intensity	6 hr (Date)	()	()	()	()	()	()	()	()	()	()	()	()
	3 hr (Date)	()	()	()	()	()	()	()	()	()	()	()	()
	1 hr (Date)	()	()	()	()	()	()	()	()	()	()	()	()
Summary of all recorded years starting from 19 ~ 19													
Average													
Max. (Year)	()	()	()	()	()	()	()	()	()	()	()	()	()
Min. (Year)	()	()	()	()	()	()	()	()	()	()	()	()	()
Daily Max.	1-day				2-day			3-day		Original			

DAILY RAINFALL RECORD

Station: Kissidougou

River Basin Basin # Station # Location N. ° ' E. ° ' E.L. m

Station Site Kissidougou Drainage Area km² Year 1974

Day	Month	Jan	Feb	Mar	Apr	May	June	Jul	Aug	Sept	Oct	Nov	Dec	Annual
1									6.8	2.0	6.5	1.0		
2								5.3	5.2	8.8	10.1	2.1		
3				3.2	62.0		1.5	15.6	0.7	4.4	4.5			
4					1.7		6.5		12.4			12.0		
5							3.0	23.3	81.7		17.6	0.1		
6					0.4		5.0	0.8		36.3	2.1			
7				18.7	3.6		8.9	2.1	5.8					
8						16.9	14.2	4.4	12.4		0.4			
9				1.7		9.1	14.4			16.5	1.5			
10			9.4			2.5	2.4	0.8	19.5	19.9	14.6			
11				18.1		3.9	7.7	2.5	1.0		2.5			
12						0.8	9.6	8.2	4.5			8.0		
13						21.0	25.0	15.5	7.2	28.5	12.4	1.5		
14					3.5	3.2		0.8	25.2	0.4	2.9			
15						5.5		3.0	4.4	49.2	3.8			
16				4.8		27.7		7.5	51.3	6.8				
17							27.5	38.2	4.2	46.8				
18						1.5		7.5	1.8	5.7	1.7			
19					15.7			28.5	3.5	12.4	5.5			
20								8.2	1.4	5.3	12.1			
21							9.6	0.6	2.5	7.8				
22					33.4	2.5	32.5	0.6		16.1	25.4			
23								1.5	21.6		2.2			
24					1.9	12.7	1.7	6.9	21.6	11.1	9.0			
25					3.2		16.4	11.1		21.7				
26					12.7	11.2	4.5	3.9	1.3		2.8			
27						10.0	0.8	1.4	5.5	0.9	1.0			
28			0.5			2.3	2.1	38.5	11.7	12.4				
29					2.0	0.4			0.4	2.6	2.1			
30					10.6	2.8		6.8	16.8	1.8				
31						12.4		0.2	66.5		83.2			
Total			9.9	46.5	151.7	146.4	195.3	243.7	445.9	254	316.9	25.2		
Number of rainy day														
Max. within one recorded day (Date)														
Max. Intensity	6 hr (Date)													
	3 hr (Date)													
	1 hr (Date)													
Summary of all recorded years starting from 19 ~ 19														
Average														
Max. (Year)														
Min. (Year)														
Daily Max.	1-day				2-day			3-day						Original

DAILY RAINFALL RECORD

Station: Kissidougou

River Basin _____ Basin # _____ Station # _____ Location N. ° ' E. ° ' E.L. _____ m

Station Site Kissidougou Drainage Area _____ km² Year 1975

Day	Month	Jan	Feb	Mar	Apr	May	June	Jul	Aug	Sept	Oct	Nov	Dec	Annual
1									22.4	37.3				
2									8.8		2.9			
3														
4								42.2	13.4	32.9				
5								2.4	1.0					
6				15.3				2.3						
7							6.7	7.5	19.5	0.3				
8						2.5	12.8		7.4					
9					4.7	8.7	5.3	14.0		5.0				
10					9.5	6.0	8.1			0.5	4.7			
11					41.8		6.0		2.6	2.2				
12					22.8	12.8		1.5	8.9					
13					0.5		6.2	31.0	24.0	0.2				
14						5.8	5.0	1.8	15.0	0.5				
15							2.2		34.7	9.2				
16						12.3	11.8			3.8				
17							6.2	11.0						
18						2.5	7.9		1.1	3.1	10.0			
19								20.0	3.8	11.3	16.0			
20						11.2	21.6	12.1	54.7	8.4				
21					34.3	21.5			25.5	0.4				
22					5.0	18.9			0.4					
23			6.5			11.5	2.7		3.2	1.4				
24				10.6	5.0			1.7		9.4				
25			1.8	5.2				12.3		4.6				
26			1.2	0.8			20.6		12.1					
27				0.7	11.9			4.3	20.9					
28							1.8	8.0	14.3					
29						14.9	2.0		15.8					
30					14.9	1.7	44.2	19.8	10.5					
31			31.2											
Total			40.7	166.1	147.4	157.1	254.9	337.0	101.2	31.6				
Number of rainy day														
Max. with in one recorded day (Date)	()	()	()	()	()	()	()	()	()	()	()	()	()	()
Max. intensity	6 hr (Date)	()	()	()	()	()	()	()	()	()	()	()	()	()
	3 hr (Date)	()	()	()	()	()	()	()	()	()	()	()	()	()
	1 hr (Date)	()	()	()	()	()	()	()	()	()	()	()	()	()
Summary of all recorded years starting from 19 ~ 19														
Average														
Mar. (Year)	()	()	()	()	()	()	()	()	()	()	()	()	()	()
Min. (Year)	()	()	()	()	()	()	()	()	()	()	()	()	()	()
Daily Max.	1-day			2-day			3-day				Original			

DAILY RAINFALL RECORD

Station: Kissidougou

River Basin _____ Basin # _____ Station # _____ Location N. ° ' E. ° ' E.L. _____ m

Station Site Kissidougou Drainage Area _____ In² Year 1976

Month Day	Jan	Feb	Mar	Apr	May	June	Jul	Aug	Sept	Oct	Nov	Dec	Annual
	1				10.7	6.3	7.8	12.8	22.1	0.6	9.2	12.4	
2					27.4		9.9	4.5	4.8		8.2		
3							49.0	26.2	6.5	17.8	2.7		
4				10.0	22.4	27.2	17.9	131.3	11.4	16.2			
5					1.9		0.6	6.3	0.7	11.3	3.5		
6		7.6			42.0	4.8			9.5		0.4		
7						26.5	1.5	0.4	10.6	2.8	18.4		
8				55.7	12.7	5.5	0.7	2.4	19.0	12.6	11.7		
9		7.0			1.1			0.2		4.9	0.8		
10				41.0			1.8				5.0		
11					33.8	34.2				6.8	5.2		
12				49.5		40.0	20.0	0.4	45.4				
13				7.5	14.6	18.0	4.0	6.1	12.5	7.0			
14					9.0	10.7	3.1		16.2	30.9			
15					1.4	10.5		78.2		0.6			
16			0.3				0.2	25.4	4.6	1.5	2.6		
17				68.9				9.0	9.8	20.8	1.2		
18					6.3			75.8		15.2	26.6		
19					16.0	10.4	1.5	11.5	8.4	1.2			
20		4.5					4.8	2.0		48.9			
21					11.2	41.0	12.3		12.3				
22			3.5	5.1	22.0	22.6	15.3	29.4	28.3	1.5			
23				13.9			22.1		18.7	12.2			
24					6.4		0.6	27.4	15.0	0.3			
25					0.4	24.2	4.1	16.2	61.7				
26			4.0	7.7	9.0			21.1	3.5				
27				10.5	1.2	75.0		10.4	0.7	18.9			
28					1.5	1.8	51.9	10.0	16.6	0.7			
29					13.7	14.5		0.2	23.3	24.8			
30					24.8	10.1			12.8	27.0			
31					0.9			4.5		43.0			
Total		191	7.8	280.5	353.1	444.8	236.1	571.0	352.9	346.2	103.9		
Number of rainy day													
Max. within one recorded day (Date)	()	()	()	()	()	()	()	()	()	()	()	()	()
Max. intensity	6 hr (Date)	()	()	()	()	()	()	()	()	()	()	()	()
	3 hr (Date)	()	()	()	()	()	()	()	()	()	()	()	()
	1 hr (Date)	()	()	()	()	()	()	()	()	()	()	()	()
Summary of all recorded years starting from 19 ~ 19													
Average													
Max. (Year)	()	()	()	()	()	()	()	()	()	()	()	()	()
Min. (Year)	()	()	()	()	()	()	()	()	()	()	()	()	()
Daily Max.	1-day			2-day			3-day			Original			

DAILY RAINFALL RECORD

Station: Kissidougou

River Basin _____ Basin # _____ Station # _____ Location N. ° ' E. ° ' E.L. _____ m

Station Site Kissidougou Drainage Area _____ km² Year 1977

Day	Month	Jan	Feb	Mar	Apr	May	June	Jul	Aug	Sept	Oct	Nov	Dec	Annual
1							2.7	0.7		0.6	4.6			
2						11.5	22.3			4.7	4.5			
3							4.7			18.6	1.0			
4						1.0		19.3	0.2	6.8	2.3			
5		2.6				0.8	2.9	33.0		42.8	16.8			
6		5.9				8.8		2.0		24.3				
7							12.6	14.9		23.1	9.2			
8						8.2	6.1	11.0	19.2	1.2	23.6			
9								1.0	0.3	8.0	14.7			
10						15.1	5.2	10.0	6.7		1.7			
11					1.4	9.3		14.0	12.0	12.0				
12						0.8	14.0		10.3	2.8	16.8			
13									1.3	16.2	21.7		26.7	
14					1.0	19.7	13.8		3.8	35.5	5.1			
15					10.7		10.5		7.0	5.2	13.7			
16						2.0			42.1	3.0			28.1	
17					7.0		23.1		2.6		12.0			
18				3.5	5.0		12.5		19.2	11.6		7.4		
19						2.1	24.6		11.2	9.5	36.6			
20							6.3		1.0	0.7	3.8	1.2		
21					0.6	10.0	1.6	11.9	4.8		17.7	6.5		
22								7.1	0.8	17.5	5.5			
23				4.0		28.5	13.4	1.0	6.5	12.8				
24											0.3			
25			1.7											
26						40.0		0.3		3.9				
27								6.5	15.1	1.5	17.8			
28						0.8	6.7	12.8	17.8	18.6	1.6			
29				1.2	0.2	33.5	14.5	1.2		11.4	0.5			
30					20.3		6.4	2.7	3.0	8.6				
31						4.3	17.9	28.0	2.1	7.0				
Total		8.5	1.7	26.5	54.2	201.4	222.8	206.7	285.8	307.9	231.5	15.1	54.8	
Number of rainy day														
Max. within one recorded day (Date)		()	()	()	()	()	()	()	()	()	()	()	()	()
Max. intensity 6 hr (Date)		()	()	()	()	()	()	()	()	()	()	()	()	()
5 hr (Date)		()	()	()	()	()	()	()	()	()	()	()	()	()
1 hr (Date)		()	()	()	()	()	()	()	()	()	()	()	()	()
Summary of all recorded years starting from 19 ~ 19														
Average														
Max. (Year)		()	()	()	()	()	()	()	()	()	()	()	()	()
Min. (Year)		()	()	()	()	()	()	()	()	()	()	()	()	()
Daily Max.	1-day				2-day			3-day				Original		

DAILY RAINFALL RECORD

Station: Kissidougou

River Basin _____ Basin # _____ Station # _____ Location N. ° ' E. ° ' E.L. _____ m

Station Site Kissidougou Drainage Area _____ In² Year 1978

Month Day	Jan	Feb	Mar	Apr	May	June	Jul	Aug	Sept	Oct	Nov	Dec	Annual
	1				1.4		13.9			8.1	4.3		
2				1.4	1.3	11.4		1.5	7.4	0.2	27.2		
3					0.2	12.1	0.6	0.7	22.8	0.1			
4					0.1	19.2	10.2	10.9	0.5	13.4			
5				8.3		2.6		3.5	7.8	27.1			
6		12.4			10.1	12.9	19.1	0.4	1.0		0.8		
7						30.1		2.5	0.5	25.9	19.6		
8		0.3		2.6		18.3		3.2	2.3	29.9	6.0		
9				24.7	0.3		1.0	7.3			8.3		
10						14.1	13.0			11.2			
11				12.3			0.5	12.3		3.8			
12				5.3	66.7	28.4	27.0	2.0	13.1				
13					1.3	10.3	12.0	7.5	5.2	2.1			
14				1.8	1.4	10.0		5.6	1.7	4.8			
15	31.3				3.3	3.8	28.1	13.8	7.6	3.7			
16			1.2	15.3		54.8	2.4	15.9	80.7	0.4			
17			3.6	3.8	0.8	14.9	0.4	0.4	7.3	0.1			
18			2.6	5.9	1.3		40.8	12.3	12.4	2.1			
19		0.3	0.4			0.2	2.4	1.2	45.1	10.8		1.1	
20		4.0			8.1	40.2		30.5	19.0	41.7		1.6	
21		>0.5			1.4	22.1	1.7	0.7	9.2	11.9			
22		5.6					9.3	51.1		4.2			
23					14.2		4.7	12.6		21.6			
24							3.3	1.8	11.4	5.3			
25					0.8	40.7			2.8	24.0			
26					18.5	7.4	22.8	29.5	25.1	4.9			
27			2.5		5.3	3.1		0.6	6.4		17.9		
28				>7.6	2.8	25.6	0.1	4.4	5.4		2.5		
29						0.1		55.3					
30				20.5	5.5	9.6	14.5	62.9		1.9		5.4	
31								47.0		19.0		8.2	
Total	31.3	42.1	10.3	129.9	142.4	42.8	223.9	415.3	217.8	285.4	82.1	16.3	
Number of rainy day													
Max. within one recorded day (Date)	()	()	()	()	()	()	()	()	()	()	()	()	()
Max. intensity	6 hr (Date)	()	()	()	()	()	()	()	()	()	()	()	()
	3 hr (Date)	()	()	()	()	()	()	()	()	()	()	()	()
	1 hr (Date)	()	()	()	()	()	()	()	()	()	()	()	()
Summary of all recorded years starting from 19 ~ 19													
Average													
Mar. (Year)	()	()	()	()	()	()	()	()	()	()	()	()	()
Min. (Year)	()	()	()	()	()	()	()	()	()	()	()	()	()
Daily Max.	1-day			2-day			3-day			Original			

**Table IV-3 Daily Rainfall Record at Siguiri
(1964 - 1978)**

DAILY RAINFALL RECORD

Station: SIGUIRI

River Basin _____ Basin # _____ Station # _____ Location N. ° ' E. ° ' E.L. m _____

Station Site SIGUIRI Drainage Area _____ sq. Year 1964

Month Day	Jan	Feb	Mar	Apr	May	June	Jul	Aug	Sept	Oct	Nov	Dec	Annual
	1							30.3	12.0	2.1			0.2
2				4.4			1.3	7.7	6.3				
3						12.0	4.0	0.6	14.2				
4								1.2	5.9				
5					49.5	16.7	0.2	9.2	28.5				
6					4.7	2.5	31.0	2.3	21.4				
7					11.2		11.0	0.3	22.5	10.4			
8					6.6				21.5				
9						0.2	18.4	1.9		10.3			
10								7.8	25.5	2.5			
11					28.0	16.0	20.5		18.0	5.4			
12						0.3	13.0	15.0	7.5			18.7	
13					51.4	25.7	14.0	0.7	0.5			1.9	
14						11.1	25.5		15.7				
15					1.5	5.9	22.7	68.5	22.3				
16									0.2	8.3			
17						61.5	5.6		37.6	1.5			
18							10.9		46.6				
19						30.9	2.3	1.6	14.6			0.3	
20				5.0		2.5	2.2	26.7	16.7	2.9			
21				1.8	4.8	23.0			0.6	6.9			
22							9.0		0.7				
23							2.6	1.0		1.3			
24						9.4	40.7	14.5					
25						0.1	7.4	2.9	7.0	0.6			
26					4.8	12.5	4.1	14.4		3.2			
27						17.2	19.8		8.0				
28						0.2		6.0					
29					20.7	27.0	0.4	16.0		9.1			
30					0.5			91.5					
31			1.4					25.3					
Total			1.4	11.2	23.7	75.5	312.9	377.1	343.9	64.4		21.1	
Number of rainy day						75.7							
Max. within one recorded day (Date)	()	()	()	()	()	()	()	()	()	()	()	()	()
Max. intensity	6 hr (Date)	()	()	()	()	()	()	()	()	()	()	()	()
	3 hr (Date)	()	()	()	()	()	()	()	()	()	()	()	()
	1 hr (Date)	()	()	()	()	()	()	()	()	()	()	()	()
Summary of all recorded years starting from 19 ~ 19													
Average													
Max. (Year)	()	()	()	()	()	()	()	()	()	()	()	()	()
Min. (Year)	()	()	()	()	()	()	()	()	()	()	()	()	()
Daily Max.	1-day			2-day			3-day						Original

DAILY RAINFALL RECORD

Station: SIGVIRI

River Basin _____ Basin # _____ Station # _____ Location N. ° ' E. ° ' E.L. _____ m

Station Site SIGVIRI Drainage Area _____ Km² Year 1965

Day	Month	Jan	Feb	Mar	Apr	May	June	Jul	Aug	Sept	Oct	Nov	Dec	Annual
1							1.7	20.4	20.0	15.8				
2									12.4	0.9	6.8			
3								12.3		7.7	16.7			
4								10.8		2.7	3.5			
5								0.1	18.8					
6									35.1					
7							5.7				3.5			
8					21.0		16.4	1.8	85.7	8.8				
9							27.0	2.9	46.0	0.9	20.0			
10							45.4		1.8	27.1				
11							0.1		0.7	8.8				
12								18.5	0.3		11.6			
13								8.6		25.4				
14							13.0			28.2				
15						0.7		7.0	28.4	16.4				
16						33.5			4.4					
17							11.9	0.3	16.5	50.9				
18							18.1		14.9	10.5	10.5			
19							43.2	22.8		13.0				
20						5.9	13.5		18.5	8.1	4.5			
21							11.4	8.5		1.1	5.8			
22						1.1	4.3			20.0				
23								0.7	15.4	10.0				
24							6.7	5.7	4.9	15.0				
25						0.3				1.0				
26								31.5		8.6				
27							18.5		16.4	3.5	0.5			
28						8.3			44.5	23.0				
29							1.0	2.9	0.8					
30			4.5					2.3	3.9	14.8	21.0			
31								28.4	2.1					
Total			4.5	21.0	49.8	242.9	188.5	188.5	390.5	320.7	104.4			
Number of rainy day														
Max. within one recorded day (Date)	()	()	()	()	()	()	()	()	()	()	()	()	()	()
Max. intensity	6 hr (Date)	()	()	()	()	()	()	()	()	()	()	()	()	()
	3 hr (Date)	()	()	()	()	()	()	()	()	()	()	()	()	()
	1 hr (Date)	()	()	()	()	()	()	()	()	()	()	()	()	()
	1 hr (Date)	()	()	()	()	()	()	()	()	()	()	()	()	()
Summary of all recorded years starting from 19 ~ 19														
Average														
Max. (Year)	()	()	()	()	()	()	()	()	()	()	()	()	()	()
Min. (Year)	()	()	()	()	()	()	()	()	()	()	()	()	()	()
Daily Max.	1-day				2-day			3-day			Original			

DAILY RAINFALL RECORD

Station: Sigviki

River Basin _____ Basin # _____ Station # _____ Location N. ° ' E. ° ' E.L. _____ m
 Station Site Sigviki Drainage Area _____ Sq. _____ Year 1986

Month Day	Jan	Feb	Mar	Apr	May	June	Jul	Aug	Sept	Oct	Nov	Dec	Annual
	1						12.7			4.8	6.1		
2						0.9		11.5	38.6				
3					4.0			1.6					
4				56.0	32.2		5.5	5.0					
5				0.5		22.0			8.5	4.1			
6							12.1		6.5	23.7			
7						12.8		3.0	58.0	35.0			
8							25.1	75.0	23.5	7.9			
9					2.9	37.2	0.2	36.0	23.0	2.0			
10						38.7				12.9			
11						3.3	1.0	28.0					
12							1.0		8.6				
13					0.6					3.0			
14							0.2		1.1	1.6			
15					3.5		21.6	42.1	18.5				
16					0.1		0.8	23.0	14.9	5.5			
17								15.9	0.3				
18							2.5	34.0	11.9	0.7			
19			4.1					6.5					
20			6.0	5.7		20.3		23.1	0.4				
21							16.5	8.0		7.0			
22						9.6	14.0		0.9	0.2			
23								11.9	4.3				
24						1.4			2.4				
25					26.8		59.5	10.6	1.6				
26			0.2						17.0	3.9			
27						0.8		13.4	4.0				
28							24.1	0.1					
29					0.2	2.7			0.5	22.0			
30									35.8				
31					2.0		37.3	47.1					
Total			10.3	62.2	110.3	72.4	27.4	388.8	284.5	189.6			
Number of rainy day								25.8	25.1				
Max. within one recorded day (Date)	()	()	()	()	()	()	()	()	()	()	()	()	()
Max. intensity 6 hr (Date)	()	()	()	()	()	()	()	()	()	()	()	()	()
Max. intensity 3 hr (Date)	()	()	()	()	()	()	()	()	()	()	()	()	()
Max. intensity 1 hr (Date)	()	()	()	()	()	()	()	()	()	()	()	()	()
Summary of all recorded years starting from 19 ~ 19													
Average													
Mar. (Year)	()	()	()	()	()	()	()	()	()	()	()	()	()
Min. (Year)	()	()	()	()	()	()	()	()	()	()	()	()	()
Daily Max.	1-day			2-day			3-day			Original			

DAILY RAINFALL RECORD

Station: SIGUIRI

River Basin Basin # Station # Location N. ° ' E. ° ' E.L. m

Station Site SIGUIRI Drainage Area Km² Year 1967

Month Day	Jan	Feb	Mar	Apr	May	June	Jul	Aug	Sept	Oct	Nov	Dec	Annual
	1					8.3		28.7	35.1		0.5		
2						1.1		3.0	7.0	1.0			
3									9.9	1.2			
4							0.8	36.3	19.0	1.6			
5										4.2			
6								0.3	1.6	1.4			
7						32.7	17.9		0.5	1.2			
8				53.7	14.1	5.7			24.3	1.9			
9							2.6	18.8	4.1	2.0	1.6		
10						9.2		6.7	0.9	1.7	23.9		
11					44.9		4.7	1.2	0.4	1.7			
12								0.7	16.5	2.2			
13						25.0			7.4	2.4			
14					1.4		10.9		17.0	2.3			
15				12.9			3.2	43.0	19.5	11.5	2.9		
16								115.4	8.5	1.6			
17					3.4	12.8	4.3	63.9		1.0			
18						29.4		4.2	24.0	0.9			
19							5.4	9.7	49.2	1.2			
20						29.6	3.7	4.6	0.3	1.9			
21							9.6	32.5	19.0	1.0			
22								23.3		1.7			
23						17.4	38.3		2.0	1.9			
24					0.9				5.6	2.3			
25				12.5			12.4	54.8	45.9	4.3			
26						5.8	0.8		15.8	2.7			
27					1.3		2.4		0.1	2.9			
28						16.5	1.1	13.7		3.5			
29						1.9	1.5	11.5	7.0	3.6			
30							22.1	55.2	7.3	3.3			
31								12.5		2.9			
Total				83.1	74.3	200.5	174.5	523.9	314.3	14.9	35.5		
Number of rainy day				79.1		25.3	25.1		24.8				
Max. within one recorded day (Date)	()	()	()	()	()	()	()	()	()	()	()	()	()
Max. intensity	6 hr (Date)	()	()	()	()	()	()	()	()	()	()	()	()
	3 hr (Date)	()	()	()	()	()	()	()	()	()	()	()	()
	1 hr (Date)	()	()	()	()	()	()	()	()	()	()	()	()
	1 hr (Date)	()	()	()	()	()	()	()	()	()	()	()	()
Summary of all recorded years starting from 19 ~ 19													
Average													
Max. (Year)	()	()	()	()	()	()	()	()	()	()	()	()	()
Min. (Year)	()	()	()	()	()	()	()	()	()	()	()	()	()
Daily Max.	1-day			2-day			3-day			Original			

DAILY RAINFALL RECORD

Station: SIGVIRI

River Basin _____ Basin # _____ Station # _____ Location N. ° ' E. ° ' E.L. _____ m

Station Site SIGVIRI Drainage Area _____ Km² Year 1968

Day \ Month	Jan	Feb	Mar	Apr	May	June	Jul	Aug	Sept	Oct	Nov	Dec	Annual
	1							0.7	15.3	0.8	7.8		
2		1.6						0.4					
3				17.1					11.0				
4					16.8	10.4			4.6				
5						11.3	4.8			2.0			
6						0.4	0.1		1.5	7.6	0.1		
7					25.1	23.4		4.0					
8							1.2	0.2	49.7	4.8			
9							3.3	1.6	7.9	14.2			
10								1.6		6.3			
11					35.2	0.4	6.7	24.6					
12					8.8	14.1	16.7		0.6				
13							8.9	6.0	1.8				
14							4.1	0.1	5.7	8.4			
15				11.8			8.4	59.6		13.6	20.5		
16							10.9	84.5	11.7	0.5			
17							3.1	11.6	0.5	4.0			
18								20.4	31.2				
19					5.9	0.2	4.6	2.0					
20					3.6		3.4						
21					0.5	8.0	33.0		8.0				
22				3.5	3.6	0.2	2.0	12.1	14.5				
23							1.3	8.8			0.8		
24		2.3		3.0				1.1					
25						2.4	12.4	1.9	27.1				
26				1.4	6.7	17.0		1.3					
27							7.4						
28							1.0	1.2	32.9				
29					0.2		4.7	43.6	44.8				
30					11.8	27.2	36.2	22.4					
31					0.7		4.5						
Total		3.9		36.8	118.9	138.4	208.6	197.2	170.5	63.2	0.7		
Number of rainy day						13	18	19	11	11			
Max. within one recorded day (Date)	()	()	()	()	()	()	()	()	()	()	()	()	()
Max. intensity 6 hr (Date)	()	()	()	()	()	()	()	()	()	()	()	()	()
Max. intensity 3 hr (Date)	()	()	()	()	()	()	()	()	()	()	()	()	()
Max. intensity 1 hr (Date)	()	()	()	()	()	()	()	()	()	()	()	()	()
Summary of all recorded years starting from 19 ~ 19													
Average													
Mar. (Year)	()	()	()	()	()	()	()	()	()	()	()	()	()
Min. (Year)	()	()	()	()	()	()	()	()	()	()	()	()	()
Daily Max.	1-day			2-day			3-day			Original			

DAILY RAINFALL RECORD

Station: Sigviki

River Basin _____ Basin # _____ Station # _____ Location N. ° ' E. ° ' E.L. _____ m

Station Site Sigviki Drainage Area _____ Km² Year 1969

Day	Month	Jan	Feb	Mar	Apr	May	June	Jul	Aug	Sept	Oct	Nov	Dec	Annual
1								21.0	2.1	96.0	0.2			
2								1.8	9.6	8.9	4.2			
3								4.8	29.7	10.8				
4							10.5			24.1	6.2			
5						47.4	5.4	29.5	0.3		4.0			
6								2.4		57.3				
7							10.9		11.6		14.1			
8								18.3			0.6			
9							29.6	27.9	3.3	7.5	6.2			
10								9.5	0.9	14.7	0.5			
11										2.2				
12							12.1	3.5		60.2				
13							4.8	25.1			24.8			
14							3.0	5.1	13.8					
15								0.8		7.3	9.6			
16								0.1	16.0		1.8			
17								22.4	43.6	0.8	21.0			
18						12.0	21.2		6.0	4.2	24.4			
19						12.0	4.0	65.2		5.8				
20				3.5		0.6		3.5	14.2		0.6			
21						2.8	27.7	0.6	23.6		21.0			
22									41.2	26.8	1.4			
23						22.7			2.5	0.3				
24								20.4		5.3	29.0			
25					10.3	3.3	44.0		9.0					
26					3.0		0.3							
27						31.9	3.4		5.4	3.9				
28						1.9	20.2		19.7					
29								1.8	10.0	0.4				
30				22.5			17.9	5.3	5.3	42.7	2.2			
31						0.1		0.7	10.0					
Total				26.0	13.3	132.7	215.0	275.7	277.8	379.2	171.2			
Number of rainy day								21.7			17.8			
Max. within one recorded day (Date)	()	()	()	()	()	()	()	()	()	()	()	()	()	()
Max. intensity 6 hr (Date)	()	()	()	()	()	()	()	()	()	()	()	()	()	()
Max. intensity 3 hr (Date)	()	()	()	()	()	()	()	()	()	()	()	()	()	()
Max. intensity 1 hr (Date)	()	()	()	()	()	()	()	()	()	()	()	()	()	()
Summary of all recorded years starting from 19 ~ 19														
Average														
Mar. (Year)	()	()	()	()	()	()	()	()	()	()	()	()	()	()
Min. (Year)	()	()	()	()	()	()	()	()	()	()	()	()	()	()
Daily Max.	1-day			2-day			5-day			Original				

DAILY RAINFALL RECORD

Station: SIGVIRA

River Basin _____ Basin # _____ Station # _____ Location N. ° ' E. ° ' E.L. _____ m

Station Site _____ Drainage Area _____ km² Year 1970

Month Day	Jan	Feb	Mar	Apr	May	June	Jul	Aug	Sept	Oct	Nov	Dec	Annual
	1							24.7	13.0				
2								9.0	6.6				
3									30.9	3.0			
4									1.3	1.3			
5													
6								8.5	30.1				
7								6.1	1.5				
8							48.6						
9							17.0	15.5	21.9				
10							6.5	14.3	7.5				
11								24.8	8.0	8.2			
12							15.1	16.8		2.5			
13								0.5					
14							16.6		35.1				
15							6.7	17.5	15.0	2.4			
16								40.0		3.3			
17							3.1	16.4	0.5		6.4		
18								0.5	12.7		2.7		
19					62.2			35.5					
20					12.8		13.1	4.0	15.5				
21								0.6	2.8				
22							1.3						
23									0.7				
24							50.4	12.8					
25					27.2		12.0	2.5					
26					17.0		0.4	1.1	2.5				
27					1.5			50.1					
28				13.5	15.6		54.7	3.7					
29				3.2				7.0					
30					11.2			1.0					
31							25.6	2.8					
Total				11.7	147.5		355.4	437.3	190.6	20.7	9.1		
Number of rainy day							35.8	2170					
Max. within one recorded day (Date)	()	()	()	()	()	()	()	()	()	()	()	()	()
Max. intensity	6 hr (Date)	()	()	()	()	()	()	()	()	()	()	()	()
	3 hr (Date)	()	()	()	()	()	()	()	()	()	()	()	()
	1 hr (Date)	()	()	()	()	()	()	()	()	()	()	()	()
Summary of all recorded years starting from 19 ~ 19													
Average													
Max. (Year)	()	()	()	()	()	()	()	()	()	()	()	()	()
Min. (Year)	()	()	()	()	()	()	()	()	()	()	()	()	()
Daily Max.	1-day					2-day							Original

DAILY RAINFALL RECORD

Station: SIGVIRI

River Basin _____ Basin # _____ Station # _____ Location N. ° ' E. ° ' E.L. _____ m

Station Site SIGVIRI Drainage Area _____ Km² Year 1971

Day \ Month	Jan	Feb	Mar	Apr	May	June	Jul	Aug	Sept	Oct	Nov	Dec	Annual
	1				4.8				21.7				
2							35.9		9.3				
3				6.5		1.2		2.1					
4							3.0	28.2					
5								6.9	22.1				
6							4.1						
7							13.9	6.5	24.5				
8								30.2	18.2				
9							16.4	2.4					
10							2.0	1.7	3.8				
11						2.9	22.2						
12							1.1	37.8					
13						18.9		27.6	6.5				
14							6.0	22.0	10.6				
15						42.2	1.4		5.0				
16								12.5	8.1				
17				1.7		6.5	19.9	3.3					
18				0.5			23.4	70.0					
19								29.4	4.1				
20												2.4	
21						45.1		1.3	0.6				
22				4.0			3.7	3.8	2.4				
23				6.0		2.3	0.6						
24				0.3		3.5	29.1	19.1	5.7				
25				2.2		2.7	6.7	26.3					
26								8.4					
27						6.3	15.4	154.3					
28						2.7		20.9	0.7				
29						16.0		1.2	15.2				
30						7.0	10.7						
31							7.8	4.2					
Total				26.0		155.3	54.3	549.1	136.8			2.4	
Number of rainy day						23	10	10	10				
Max. within one recorded day (Date)	()	()	()	()	()	()	()	()	()	()	()	()	()
Max. intensity	6 hr (Date)	()	()	()	()	()	()	()	()	()	()	()	()
	3 hr (Date)	()	()	()	()	()	()	()	()	()	()	()	()
	1 hr (Date)	()	()	()	()	()	()	()	()	()	()	()	()
Summary of all recorded years starting from 19 ~ 19													
Average													
Mar. (Year)	()	()	()	()	()	()	()	()	()	()	()	()	()
Min. (Year)	()	()	()	()	()	()	()	()	()	()	()	()	()
Daily Max.	1-day			2-day			3-day			Original			

DAILY RAINFALL RECORD

Station: SIGVIRI

River Basin _____ Basin # _____ Station # _____ Location N. ° ' E. ° ' E.L. _____ m

Station Site SIGVIRI Drainage Area _____ Km² Year 1972

Month Day	Jan	Feb	Mar	Apr	May	June	Jul	Aug	Sept	Oct	Nov	Dec	Annual
	1					9.0	0.9	0.6	22.6		7.1		
2					5.0		19.3	6.3	70.0				
3						26.0		1.8	1.0	7.7			
4					0.1	1.0		4.0	22.7	4.1			
5						6.0	10.6	3.4					
6						1.6		4.2	3.2				
7						3.0				2.3			
8					0.2	2.4	1.7						
9					72.5		1.0	18.1					
10						9.0			29.6				
11					5.4	1.9	9.3	1.8					
12									2.1				
13						10.5	10.3	10.7	24.3				
14				12.3		0.4	0.1	1.5	41.5				
15							3.5	19.6		6.0			
16					0.5	2.9	5.8	0.5	12.4				
17							7.5						
18						3.8	1.3	4.8		19.4			
19										47.3			
20			0.2		2.0			11.3					
21							11.7	2.3	1.0				
22				0.6		27.3	1.3						
23			3.0				19.4	22.6					
24						0.8	3.2	35.9					
25			10.9		11.4	24.9			19.6				
26			2.5	2.3	22.2			2.5					
27					0.5		11.4	21.3					
28					13.4	29.0	2.2						
29							25.6	19.0	15.8				
30						0.2	4.0	2.4					
31							7.7						
Total			10.6	10.2	147.2	151.6	105.5	226.0	243.2	93.9			
Number of rainy day								249.6					
Max. within one recorded day (Date)	()	()	()	()	()	()	()	()	()	()	()	()	()
Max. intensity	6 hr (Date)	()	()	()	()	()	()	()	()	()	()	()	()
	3 hr (Date)	()	()	()	()	()	()	()	()	()	()	()	()
	1 hr (Date)	()	()	()	()	()	()	()	()	()	()	()	()
Summary of all recorded years starting from 19 ~ 19													
Average													
Max. (Year)	()	()	()	()	()	()	()	()	()	()	()	()	()
Min. (Year)	()	()	()	()	()	()	()	()	()	()	()	()	()
Daily Max.	1-day				2-day			3-day		Original			

DAILY RAINFALL RECORD

Station: SIGVIRI

River Basin _____ Basin # _____ Station # _____ Location N. ° ' E. ° ' E.L. _____ m

Station Site SIGVIRI Drainage Area _____ km² Year 1973

Month Day	Jan	Feb	Mar	Apr	May	June	Jul	Aug	Sept	Oct	Nov	Dec	Annual
	1						20.0	2.3	4.4				
2						3.2	1.7	5.1	20.5	0.5			
3							2.2	1.6	3.4	33.5			
4								23.0	0.1				
5					8.0	0.1	18.5	0.4	30.2				
6						4.1		14.2	4.2	15.3			
7						0.4		19.2					
8					1.0			2.1					
9						15.0		0.1					
10								28.8	2.0	1.0			
11								2.1	4.5				
12					4.6			10.7	25.9				
13							2.8	21.4	0.3				
14						2.5		26.7					
15					6.0			12.9	8.5	0.5			
16						7.3	37.2	20.0	13.2				
17					16.0		0.5	9.5					
18			0.8			0.7	0.1	19.7					
19					0.1		24.5	10.6					
20				4.9		6.5	0.5						
21						22.4		2.4	2.9				
22					30.8		1.4	0.5		16.6			
23							41.9	36.4	23.5	3.5			
24							0.5	22.1	2.7	0.6			
25						2.7	30.0	0.5					
26							13.8	22.4					
27					7.2	42.7	2.3	1.9					
28				17.1		10.1	5.7	8.2					
29				21.0			4.3	6.6					
30							15.9	11.5					
31					1.6		3.1	1.5					
Total			0.8	43.0	75.3	137.4	217.7	358.5	142.9	71.5			
Number of rainy day													
Max. within one recorded day (Date)	()	()	()	()	()	()	()	()	()	()	()	()	()
Max. intensity	6 hr (Date)	()	()	()	()	()	()	()	()	()	()	()	()
	3 hr (Date)	()	()	()	()	()	()	()	()	()	()	()	()
	1 hr (Date)	()	()	()	()	()	()	()	()	()	()	()	()
Summary of all recorded years starting from 19 ~ 19													
Average													
Max. (Year)	()	()	()	()	()	()	()	()	()	()	()	()	()
Min. (Year)	()	()	()	()	()	()	()	()	()	()	()	()	()
Daily Max.	1-day			2-day			3-day			Original			

DAILY RAINFALL RECORD

Station: SIGVIRI

River Basin _____ Basin # _____ Station # _____ Location N. ° ' E. ° ' E.L. _____ m

Station Site SIGVIRI Drainage Area _____ km² Year 1974

Month Day	Jan	Feb	Mar	Apr	May	June	Jul	Aug	Sept	Oct	Nov	Dec	Annual
	1						78.4				28.3		
2							15.0	21.5		31.1			
3													
4							11.0			0.3			
5						19.3	2.0	27.6					
6							10.5		41.7	12.5			
7						1.4	15.3	5.6	66.6				
8							27.7	2.1		6.6			
9						11.1	0.5		7.0	2.0			
10						1.2			20.4	6.8			
11					11.3	13.7	6.2		2.8	0.3			
12							0.6						
13					5.1	2.8	16.4	12.2	22.7				
14			3.0			0.8	0.1		15.3				
15			0.5		2.2	12.6	2.3	4.2	2.4				
16					11.5		32.9	27.8					
17			0.1		2.7	14.4	3.1	16.9	2.6				
18							8.7	21.1	15.4				
19							34.7	4.5	4.4				
20				6.4			8.5	19.5					
21								31.9					
22				42.7		22.2	15.2	0.8	20.1				
23				13.2			34.7	5.0	1.1				
24					11.9	7.7	5.8						
25					2.0		58.6	0.8					
26					2.2		1.5		17.6				
27							57.3	6.9	0.4				
28						27.4	36.7	10.3	2.9				
29				6.3	18.2		22.4						
30				4.8			7.6	15.5					
31								2.9					
Total			3.6	73.4	67.1	25.0	424.7	237.1	50.4	87.9			
Number of rainy day							135.3						
Max. within one recorded day (Date)	()	()	()	()	()	()	()	()	()	()	()	()	()
Max. intensity	6 hr (Date)	()	()	()	()	()	()	()	()	()	()	()	()
	3 hr (Date)	()	()	()	()	()	()	()	()	()	()	()	()
	1 hr (Date)	()	()	()	()	()	()	()	()	()	()	()	()
Summary of all recorded years starting from 19 ~ 19													
Average													
Max. (Year)	()	()	()	()	()	()	()	()	()	()	()	()	()
Min. (Year)	()	()	()	()	()	()	()	()	()	()	()	()	()
Daily Max.	1-day			2-day			3-day			Original			

DAILY RAINFALL RECORD

Station: SIGVIRI

River Basin _____ Basin # _____ Station # _____ Location N. ° ' E. ° ' E.L. _____ m

Station Site SIGVIRI Drainage Area _____ km² Year 1975

Day \ Month	Jan	Feb	Mar	Apr	May	June	Jul	Aug	Sept	Oct	Nov	Dec	Annual
	1				0.5				6.6	47.1	8.4		
2							5.5	9.8	6.1				
3							1.1						
4							45.5		16.4	0.5			
5						9.2	17.5	20.7	18.4	3.9			
6								12.4		6.3			
7							15.1		24.6				
8					11.1	1.6		0.5	25.2				
9						26.2	35.3	1.5	1.7	1.5			
10				1.2	5.6	65.7		24.8	19.1				
11				9.4		8.5		6.4	0.5				
12							0.8	5.2	0.3				
13						9.4	0.6		1.0	4.4			
14								20.3	70.6	4.1			
15					7.0	20.9			27.1				
16					0.4		21.1	1.2		1.4			
17						3.9				6.9			
18					9.0		12.0	35.6	2.3				
19								0.9	0.1	22.7	21.2		
20				1.0		21.8	4.9			3.4	1.0		
21								66.3	7.9	11.9			
22					8.5		2.5	10.1	10.3	12.3			
23					5.8			5.8	1.7				
24							8.4	15.4	0.2				
25							26.2	0.2		14.7			
26							2.8	0.7					
27						2.5	41.4	8.4	13.9				
28					27.8		74.7	0.1	0.1				
29			11.2				6.8	41.1	13.2				
30							7.7	2.4	15.1				
31			1.2				22	1.5					
Total			12.4	11.9	772	175.1	357.3	307.8	363.1	902	222		
Number of rainy day				12.1	752	119.7	322.9	222.0	222.9	256			
Max. within one recorded day (Date)	()	()	()	()	()	()	()	()	()	()	()	()	()
Max. intensity 6 hr (Date)	()	()	()	()	()	()	()	()	()	()	()	()	()
3 hr (Date)	()	()	()	()	()	()	()	()	()	()	()	()	()
1 hr (Date)	()	()	()	()	()	()	()	()	()	()	()	()	()
Summary of all recorded years starting from 19 ~ 19													
Average													
Mar. (Year)	()	()	()	()	()	()	()	()	()	()	()	()	()
Min. (Year)	()	()	()	()	()	()	()	()	()	()	()	()	()
Daily Max.	1-day			2-day			3-day			Original			

DAILY RAINFALL RECORD

Station: SIGUIRI

River Basin _____ Basin # _____ Station # _____ Location N. ° ' E. ° ' E.L. _____

Station Site SiguiRI Drainage Area _____ Km² Year 1976

Month Day	Jan	Feb	Mar	Apr	May	June	Jul	Aug	Sept	Oct	Nov	Dec	Annual
	1								14.1		16.0	6.3	
2									6.2	2.8			
3							0.6	0.2		33.6			
4							45.0	13.6		9.4			
5							1.0		3.2				
6							4.3	0.7	0.8				
7								1.6	2.6	9.4			
8						0.1		7.0	13.7				
9					1.2				4.2				
10							5.6		2.2				
11													
12					9.2	10.1							
13				1.8		14.1	0.4	7.7	7.2				
14					29.6	3.2	4.6	12.7	25.3	9.1			
15					0.3		22.5	2.5	4.6				
16						8.0	0.2	4.5		1.5			
17						2.1	20.6	21.9	3.3				
18							68.5			89.1			
19						8.0	0.9	6.7	7.9	30.5			
20						9.2	37.2	0.4	2.8				
21					2.0					9.3			
22					13.4	11.8	34.2	15.3	9.8	27.4			
23					26.5	21.0	27.6	17.3	25.0	7.8			
24					57.3	12.4	17.5	1.2	1.9	1.2			
25				0.5		0.1	09.7		42.1	4.3			
26					11.6	0.7			27.5				
27					1.1		7.4	20.3					
28							4.0	1.5	15.2	7.8			
29									0.9				
30								24.7	10.4	7.2			
31					9.4		8.1						
Total				2.3	116.6	100.8	314.4	173.9	226.8	219.4	6.3		
Number of rainy day							29	17					
Max. within one recorded day (Date)	()	()	()	()	()	()	()	()	()	()	()	()	()
Max. intensity	6 hr (Date)	()	()	()	()	()	()	()	()	()	()	()	()
	3 hr (Date)	()	()	()	()	()	()	()	()	()	()	()	()
	1 hr (Date)	()	()	()	()	()	()	()	()	()	()	()	()
Summary of all recorded years starting from 19 ~ 19													
Average													
Max. (Year)	()	()	()	()	()	()	()	()	()	()	()	()	()
Min. (Year)	()	()	()	()	()	()	()	()	()	()	()	()	()
Daily Max.	1-day			2-day			3-day			Original			

DAILY RAINFALL RECORD

Station: SIGVIRI

River Basin _____ Basin # _____ Station # _____ Location N. ° ' E. ° ' E.L. _____ m

Station Site SIGVIRI Drainage Area _____ Sq. _____ Year 1977

Month Day	Jan	Feb	Mar	Apr	May	June	Jul	Aug	Sept	Oct	Nov	Dec	Annual
	1						32.4	10.1		4.0	39.5		
2													
3					0.3		22.5		3.7				
4							7.6		9.6	0.9			
5							39.5		33.6	5.7			
6	1.1					4.8	3.0						
7	2.7					35.2			23.9				
8	0.3					0.1		44.8	25.7				
9						0.3		10.8	26.5				
10							0.5	2.0	6.2				
11				3.5				4.3	9.7				
12						4.3	6.4	10.0	9.0	7.3			
13							29.2						
14						3.5		0.9	22.7				
15				4.3				26.2	23.7				
16								3.0	29.6				
17				1.1				3.2		6.5			
18						20.5			9.4	0.3			
19						1.7	27.3	7.6	5.4				
20				0.2	9.8	16.8	13.2	0.2	2.5				
21					46.7		99.7		13.7				
22					12.2	13.2	27.6	0.6		19.5			
23						19.5		37.5					
24							1.5		5.3	0.4			
25					0.5				7.1				
26							27.5	19.1					
27			1.7					11.1		0.5			
28				1.4					6.1				
29					29.8				0.3				
30					10.1		23.9	11.0	10.2				
31					1.0		0.1	0.2					
Total	4.1		1.7	9.1	106.0	180.1	408.1	194.0	287.9	80.6			
Number of rainy day							6	1	19	5			
Max. within one recorded day (Date)	()	()	()	()	()	()	()	()	()	()	()	()	()
Max. intensity	6 hr (Date)	()	()	()	()	()	()	()	()	()	()	()	()
	3 hr (Date)	()	()	()	()	()	()	()	()	()	()	()	()
	1 hr (Date)	()	()	()	()	()	()	()	()	()	()	()	()
Summary of all recorded years starting from 19 ~ 19													
Average													
Max. (Year)	()	()	()	()	()	()	()	()	()	()	()	()	()
Min. (Year)	()	()	()	()	()	()	()	()	()	()	()	()	()
Daily Max.	1-day			2-day			3-day			Original			

DAILY RAINFALL RECORD

Station: SIGVIRI

River Basin _____ Basin # _____ Station # _____ Location N. ° ' E. ° ' E.L. _____

Station Site SIGVIRI Drainage Area _____ Km² Year 1978

Day	Month	Jan	Feb	Mar	Apr	May	June	Jul	Aug	Sept	Oct	Nov	Dec	Annual
1									51.3					
2							0.2		77.4	11.2	3.7			
3						0.9		16.4	6.6	18.6	2.0			
4							22.8	4.4	5.6	6.5				
5							0.4				12.4			
6							7.4		7.8					
7							6.7	20.3		23.1				
8							26.2		3.9					
9								1.8	3.4	10.6	112.7			
10				19.2							18.2			
11							12.0			42.0				
12				2.6			1.3	7.5	12.0	12.5	3.4			
13									48.0	24.9				
14										1.6				
15				0.2	3.4	1.6	29.2			11.7				
16			0.2			1.8				2.5				
17				2.1		2.5			0.6	6.4	0.5			
18					4.0	26.6	2.4							
19								3.9		9.4	31.5			
20									5.3	24.8	37.0			
21			1.6						23.2	4.2	10.4			
22		1.7						17.1	24.3	9.8	0.6			
23							4.0		1.4	45.3				
24						0.1	22.6		6.0	21.8				
25				12.7			0.3	8.9	0.7					
26				25.2			4.6	5.8	13.8					
27				1.5										
28										13.6				
29			0.3				10.3		0.3					
30						0.9			2.7		5.8			
31								1.0						
Total		1.7	2.1	14.7	9.3	154.4	119.7	300.1	22.5	238.2				
Number of rainy day						157.4		300.5						
Max. within one recorded day (Date)	()	()	()	()	()	()	()	()	()	()	()	()	()	()
Max. intensity	6 hr (Date)	()	()	()	()	()	()	()	()	()	()	()	()	()
	3 hr (Date)	()	()	()	()	()	()	()	()	()	()	()	()	()
	1 hr (Date)	()	()	()	()	()	()	()	()	()	()	()	()	()
Summary of all recorded years starting from 19 ~ 19														
Average														
Max. (Year)	()	()	()	()	()	()	()	()	()	()	()	()	()	()
Min. (Year)	()	()	()	()	()	()	()	()	()	()	()	()	()	()
Daily Max.	1-day			2-day			3-day				Original			

**Table IV-4 Temperature, Sunshine, Relative Humidity
and Piche Evaporation at Kankan
(1964 - 1978)**

METEOROLOGICAL RECORD

year (1964)

Station	Kankan		Month Jan.		Observation Time		
Day	Atm. Temp.		Earth Temp.		Sunshine Hours Hr	Relative Humidity %	Piche Evaporation mm
	Max	Min	1ft deep	4ft deep			
	C°	C°	C°	C°			
1	31.2	13.5				42	5.4
2	31.0	13.4				40	6.8
3	29.0	13.2				38	6.4
4	27.2	16.0				37	7.4
5	34.0	14.8				45	6.5
6	34.5	19.7				41	8.8
7	33.7	17.0				39	8.8
8	33.3	15.6				40	7.3
9	34.8	15.7				36	7.8
10	34.2	15.2				36	10.8
11	35.2	13.8				34	9.0
12	34.7	13.4				35	11.7
13	35.0	13.5				34	7.0
14	35.5	13.2				37	10.1
15	35.2	14.0				33	7.1
16	35.1	14.0				34	8.8
17	36.2	13.6				35	3.4
18	35.6	14.3				47	6.0
19	34.5	19.0				48	5.4
20	34.8	17.2				42	6.2
21	35.2	17.4				36	8.9
22	35.8	15.4				31	11.4
23	36.4	15.8				30	9.0
24	35.5	15.0				32	9.9
25	34.5	14.2				34	7.4
26	35.0	15.1				33	4.0
27	33.8	16.2				32	7.5
28	32.6	16.2				37	7.6
29	33.2	21.0				31	7.9
30	32.5	17.2				29	5.5
31	35.2	15.0				31	8.7
Total	1023.4	478.6				1129	237.0
Mean	33.0	15.4				36	7.7

METEOROLOGICAL RECORD

year (1964)

Station	Kankan		Month Feb.		Observation Time		
Day	Atm. Temp.		Earth Temp.		Sunshine Hours	Relative Humidity	Piche Evaporation
	Max	Min	1ft deep	4ft deep			
	C°	C°	C°	C°	Hr	%	mm
1	33.1	14.6				25	9.2
2	35.2	12.8				26	7.0
3	36.2	14.6				28	11.8
4	36.5	14.5				28	9.7
5	35.7	15.6				31	9.6
6	36.0	16.0				29	8.0
7	35.4	16.0				28	7.5
8	36.4	15.5				29	11.0
9	36.9	18.6				27	10.3
10	36.0	16.0				23	10.0
11	34.0	15.5				26	8.7
12	35.7	14.3				25	9.7
13	35.2	14.9				24	8.3
14	35.6	18.8				27	10.4
15	35.7	19.0				26	9.2
16	37.0	16.6				25	10.4
17	37.6	16.5				27	12.1
18	38.0	16.0				28	13.0
19	38.7	15.9				27	12.6
20	38.2	18.6				26	10.6
21	37.7	19.3				38	8.7
22	38.8	20.8				41	8.5
23	37.2	24.0				46	4.9
24	36.7	21.7				33	10.2
25	38.7	18.6				28	11.0
26	38.0	23.0				44	10.2
27	37.0	21.6				37	5.7
28	36.8	23.8				40	8.5
29	37.6	24.8				43	8.1
30							
31							
Total	1061.4	517.9				885	217.9
Mean	36.6	17.9				31	9.6

METEOROLOGICAL RECORD

year (1964)

Station Kankan		Month Mar.			Observation Time		
Day	Atm. Temp.		Earth Temp.		Sunshine Hours Hr	Relative Humidity %	Piche Evaporation mm
	Max	Min	1ft deep	4ft deep			
	C°	C°	C°	C°			
1	38.0	23.7				42	8.3
2	38.6	24.2				46	8.8
3	37.9	24.2				47	7.9
4	37.5	24.2				42	8.7
5	38.0	20.8				41	10.0
6	38.1	19.8				34	9.3
7	37.8	20.0				41	6.9
8	37.2	23.6				41	7.5
9	38.8	22.9				44	9.4
10	38.8	25.0				45	6.4
11	37.2	23.7				41	8.5
12	38.2	23.8				47	7.8
13	39.2	25.0				43	7.5
14	39.8	24.5				40	10.9
15	38.7	22.0				47	9.3
16	38.8	24.4				48	8.9
17	38.0	25.0				43	8.9
18	38.4	25.2				47	10.0
19	26.8	25.2				51	6.6
20	35.4	24.8				63	5.4
21	36.0	24.8				54	5.1
22	36.8	24.2				52	6.7
23	38.3	24.2				57	8.4
24	38.4	25.4				47	7.8
25	37.8	24.2				43	9.1
26	38.2	25.0				45	8.7
27	36.6	24.8				61	9.2
28	37.7	24.6				62	6.9
29	35.2	22.6				59	7.1
30	37.3	23.8				45	9.1
31	37.5	23.7				49	7.6
Total	1173.0	739.3				1467	254.7
Mean	37.8	23.8				47	8.2