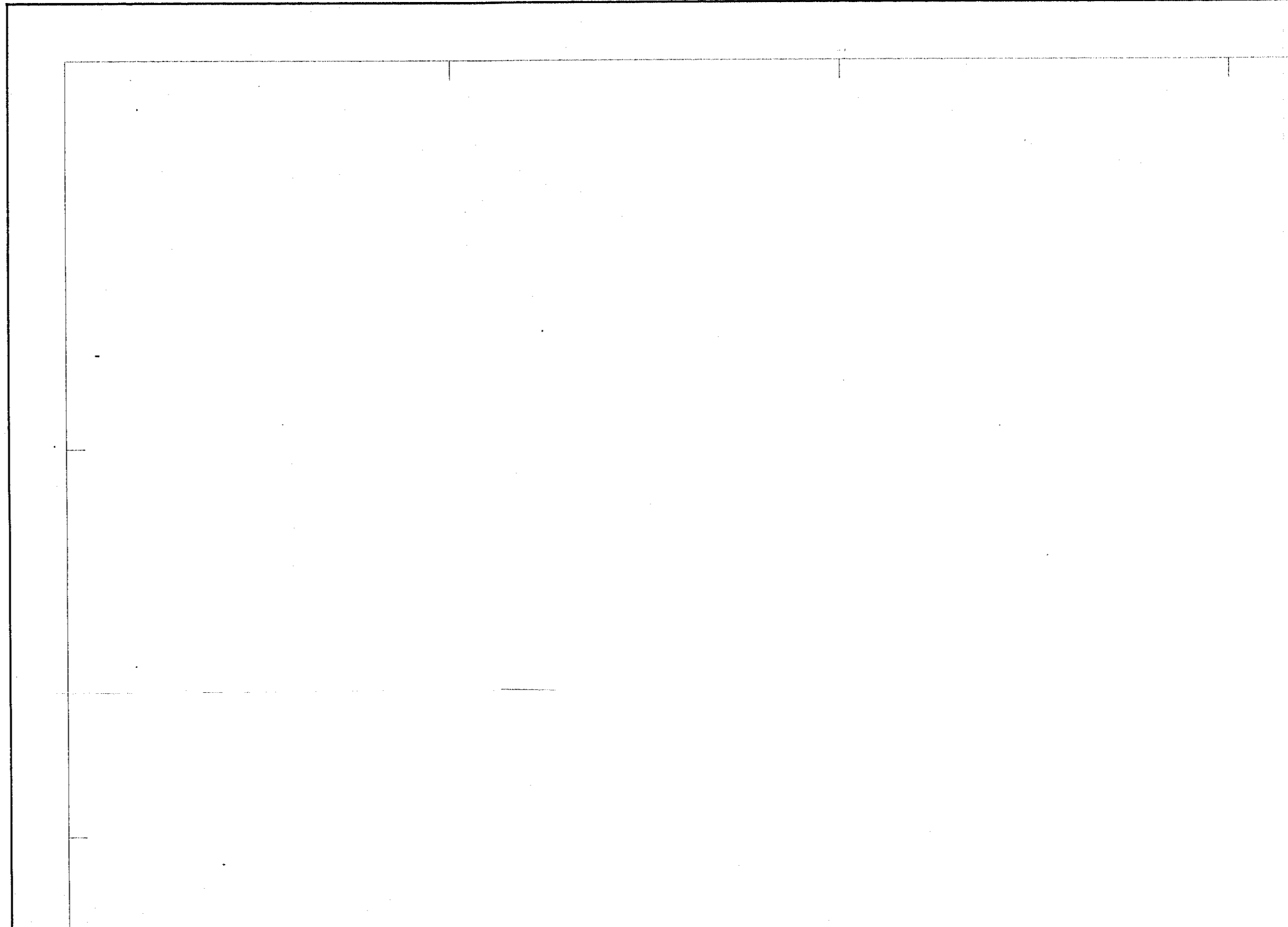
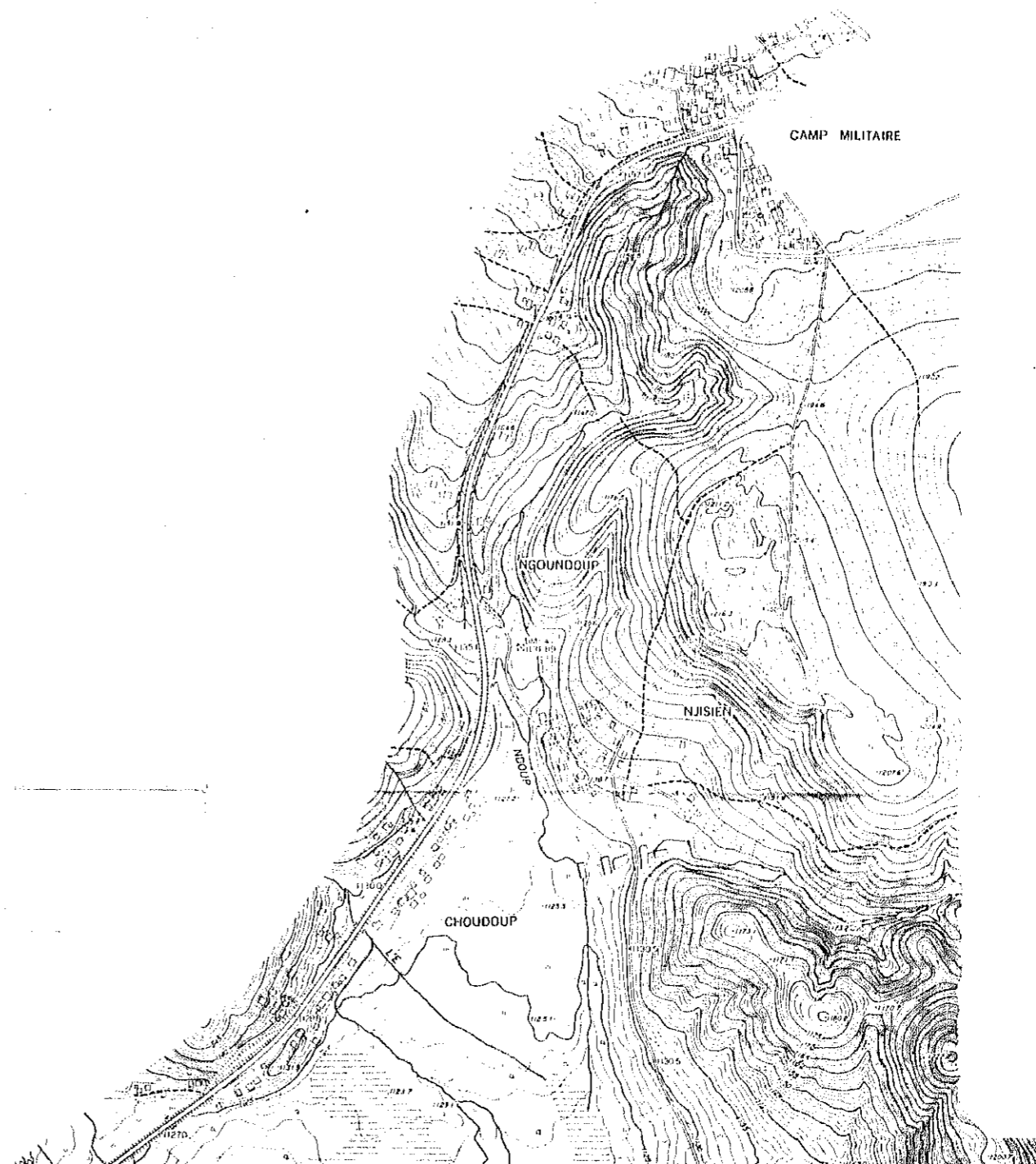
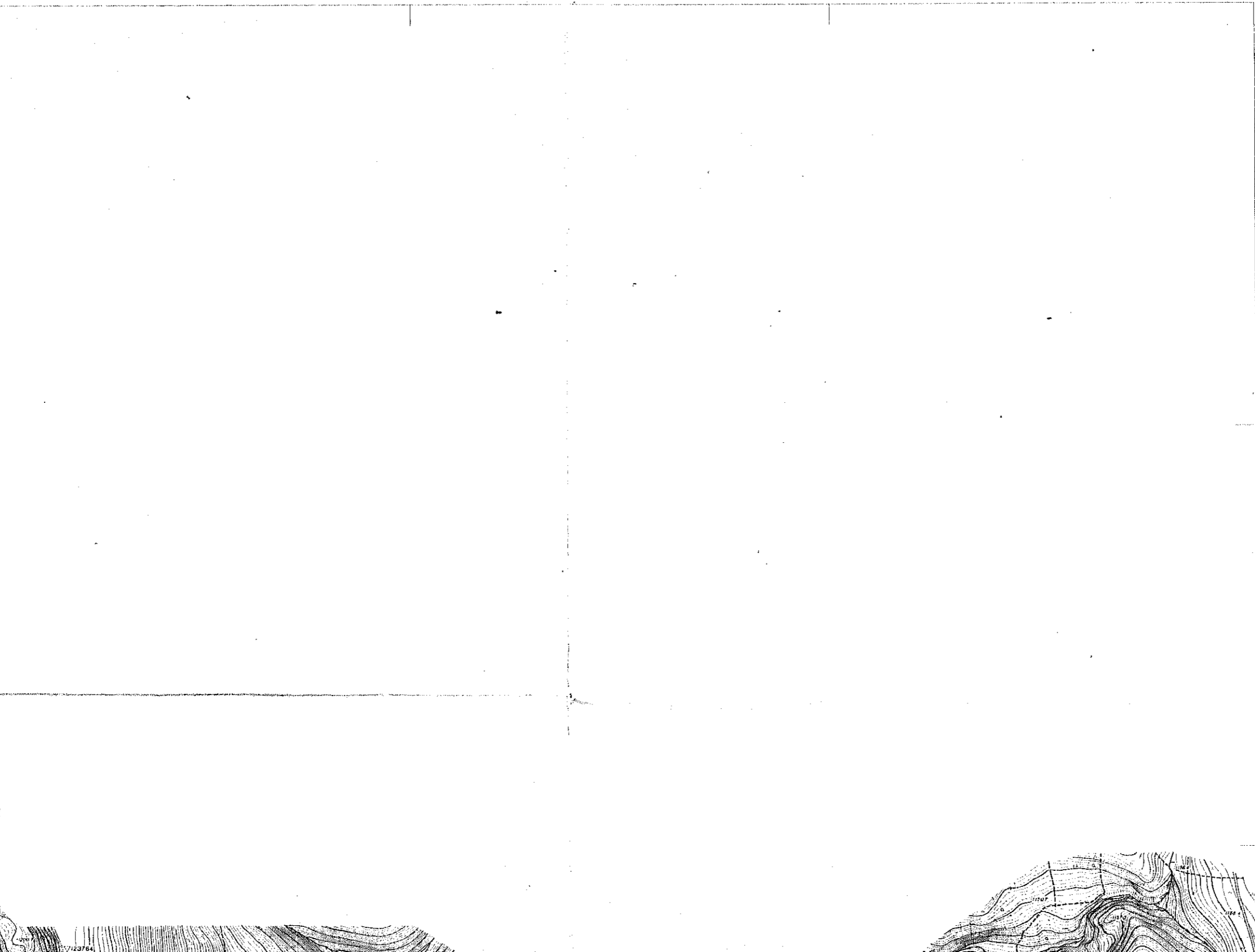
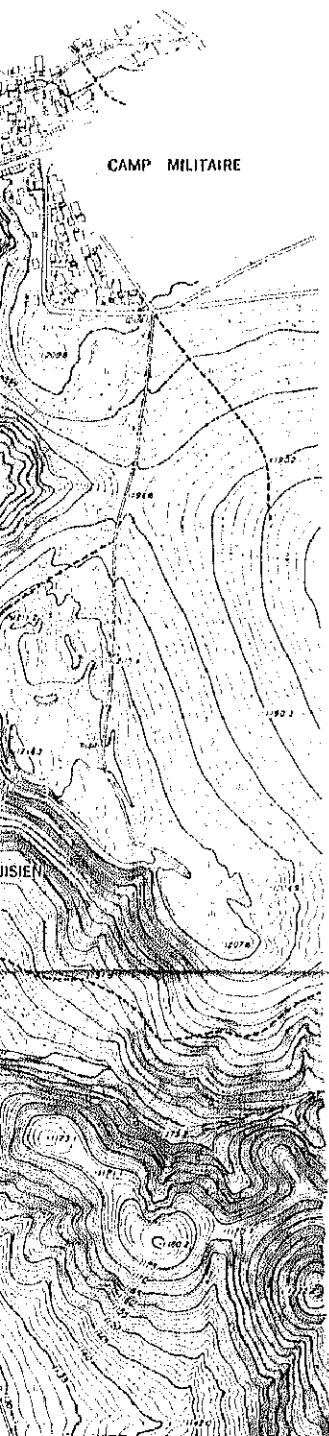


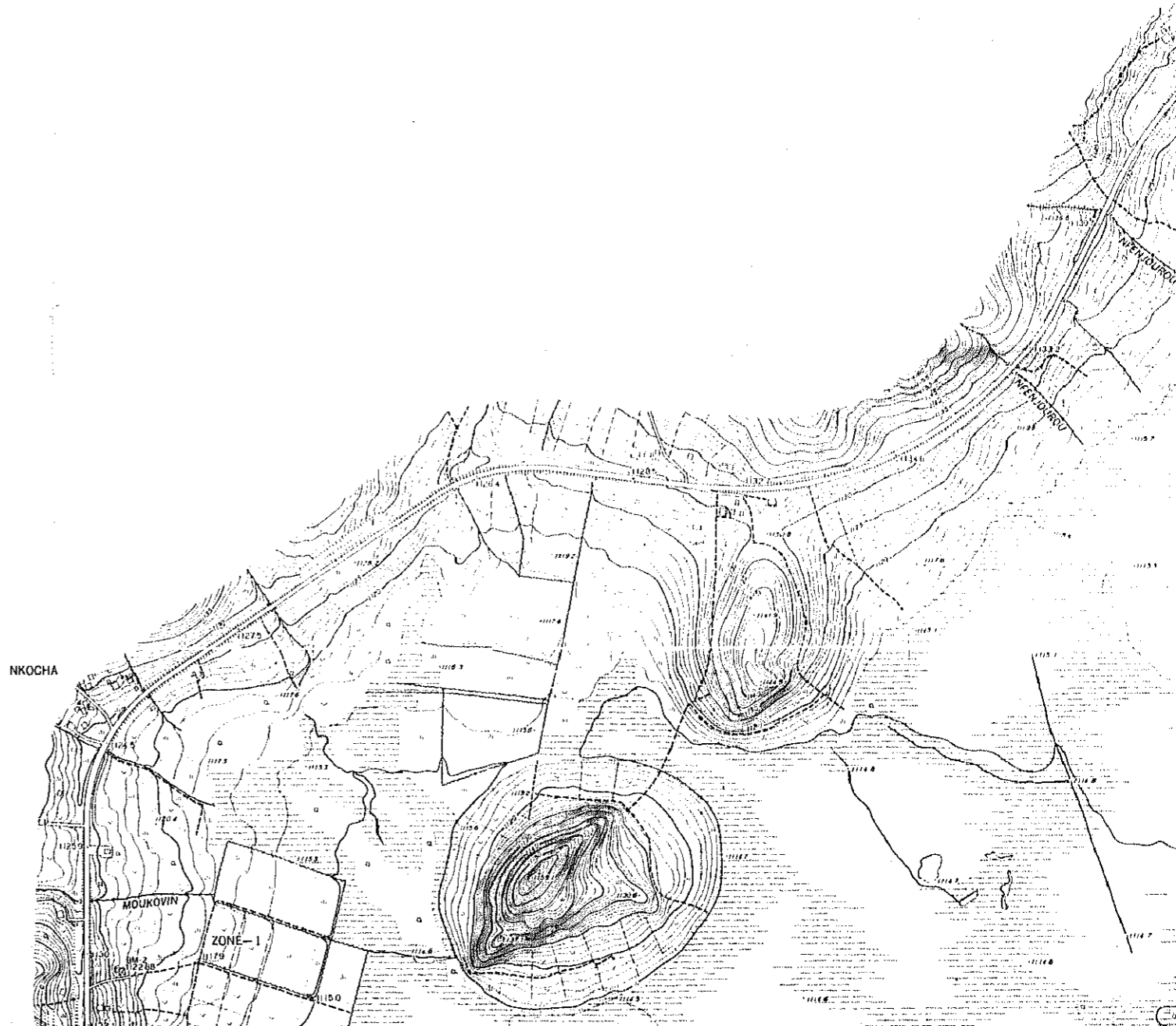
BAIGOM AGRICULTURAL DEVELOPMENT PROJECT (CAMEROON)

1:10,000













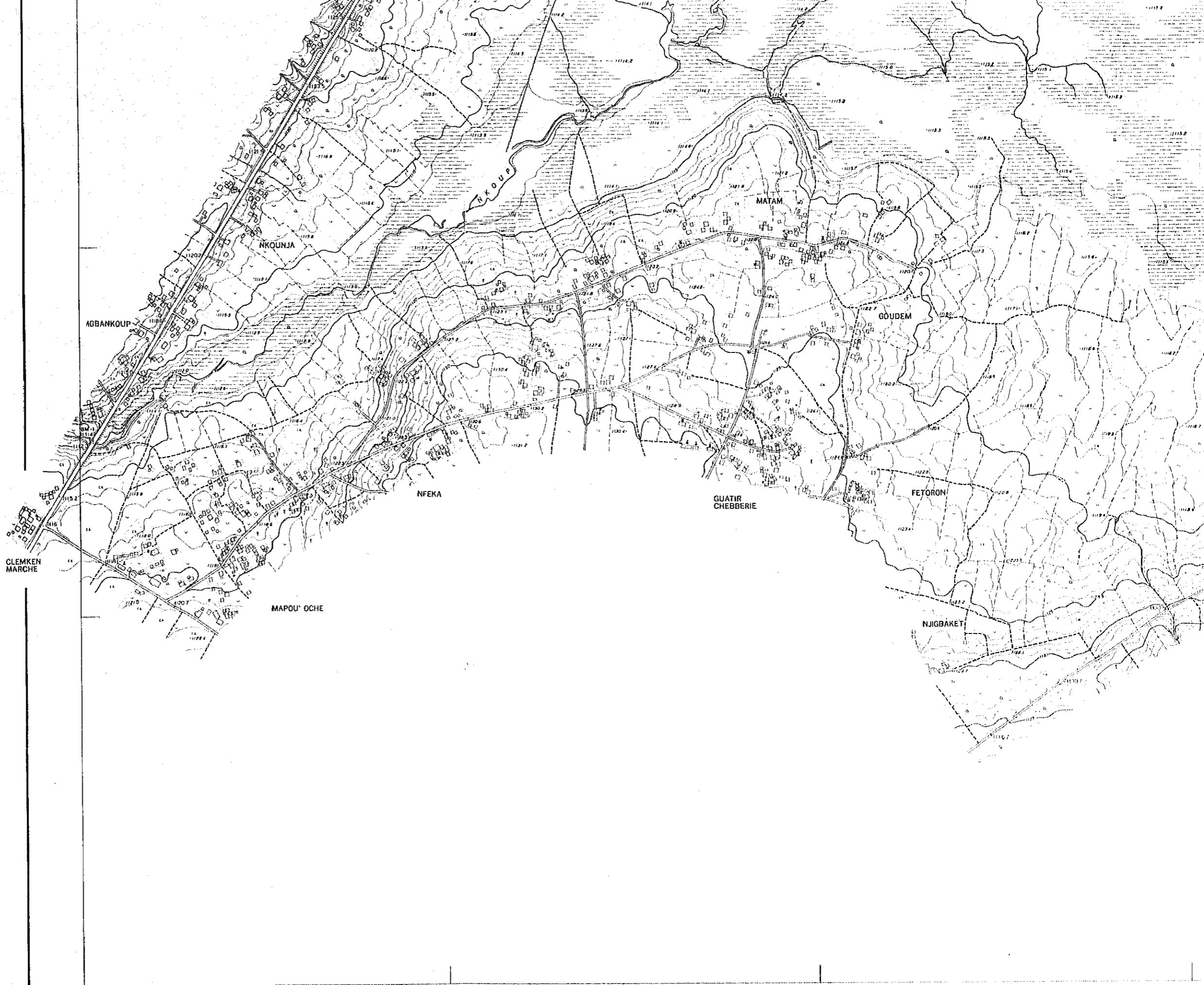




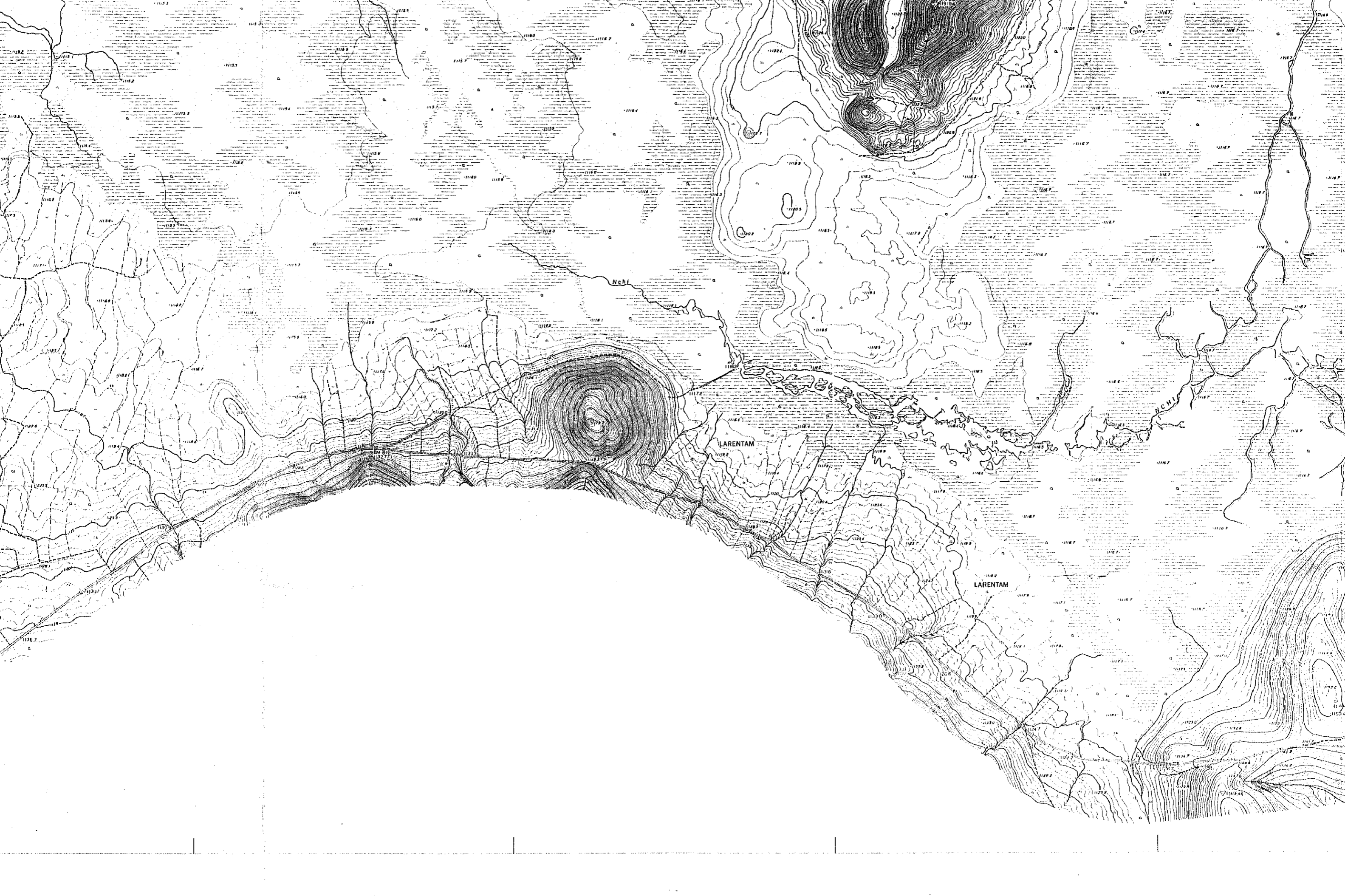
TAM NCHI

Nchi





LEGEND					
	Built-up area		Building to scale		Hospital
	Index contour		Church		Police station
	Intermediate contour				
	Flood-prone contour				

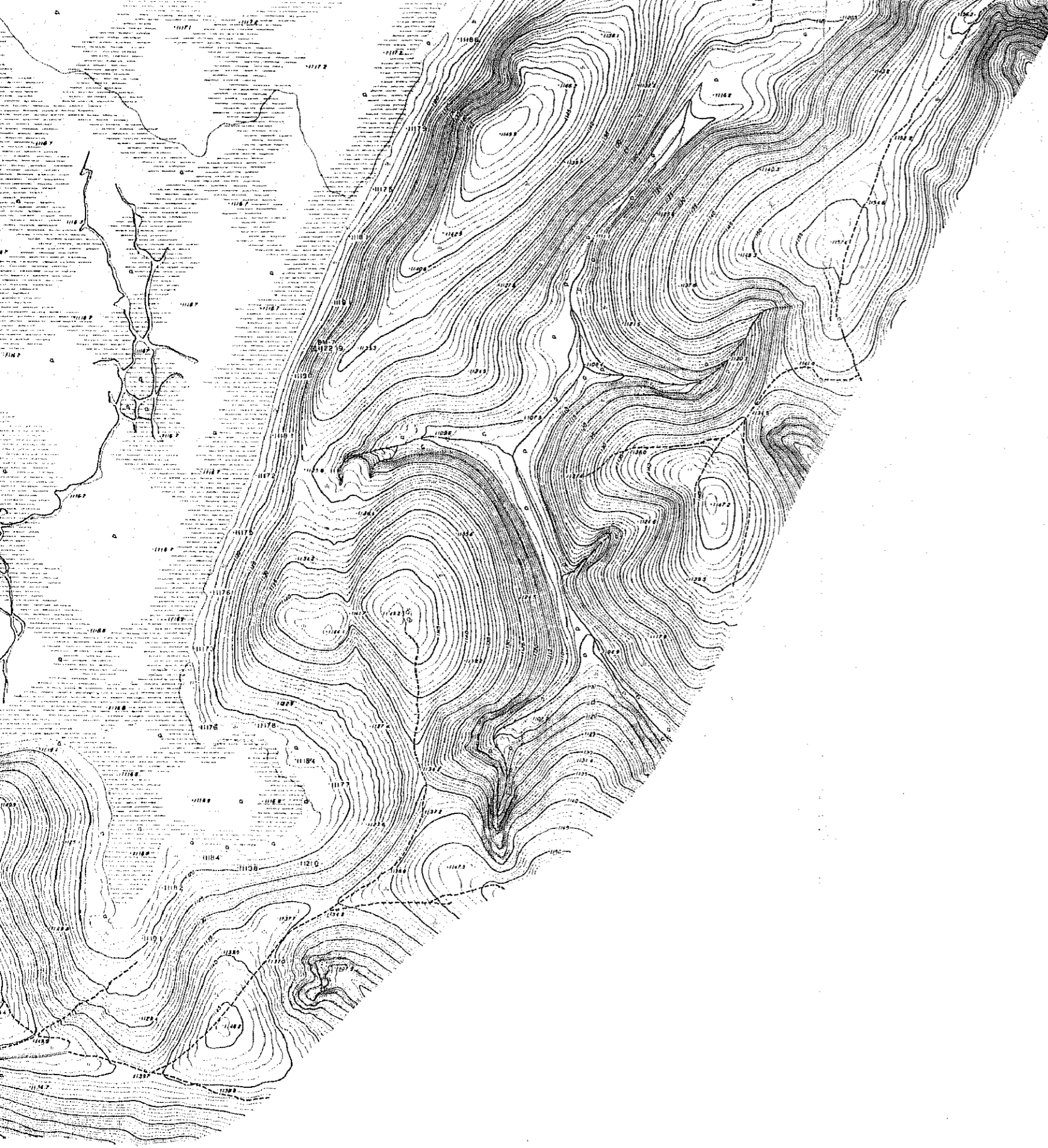


SCALE 1:10,000

Metres

0

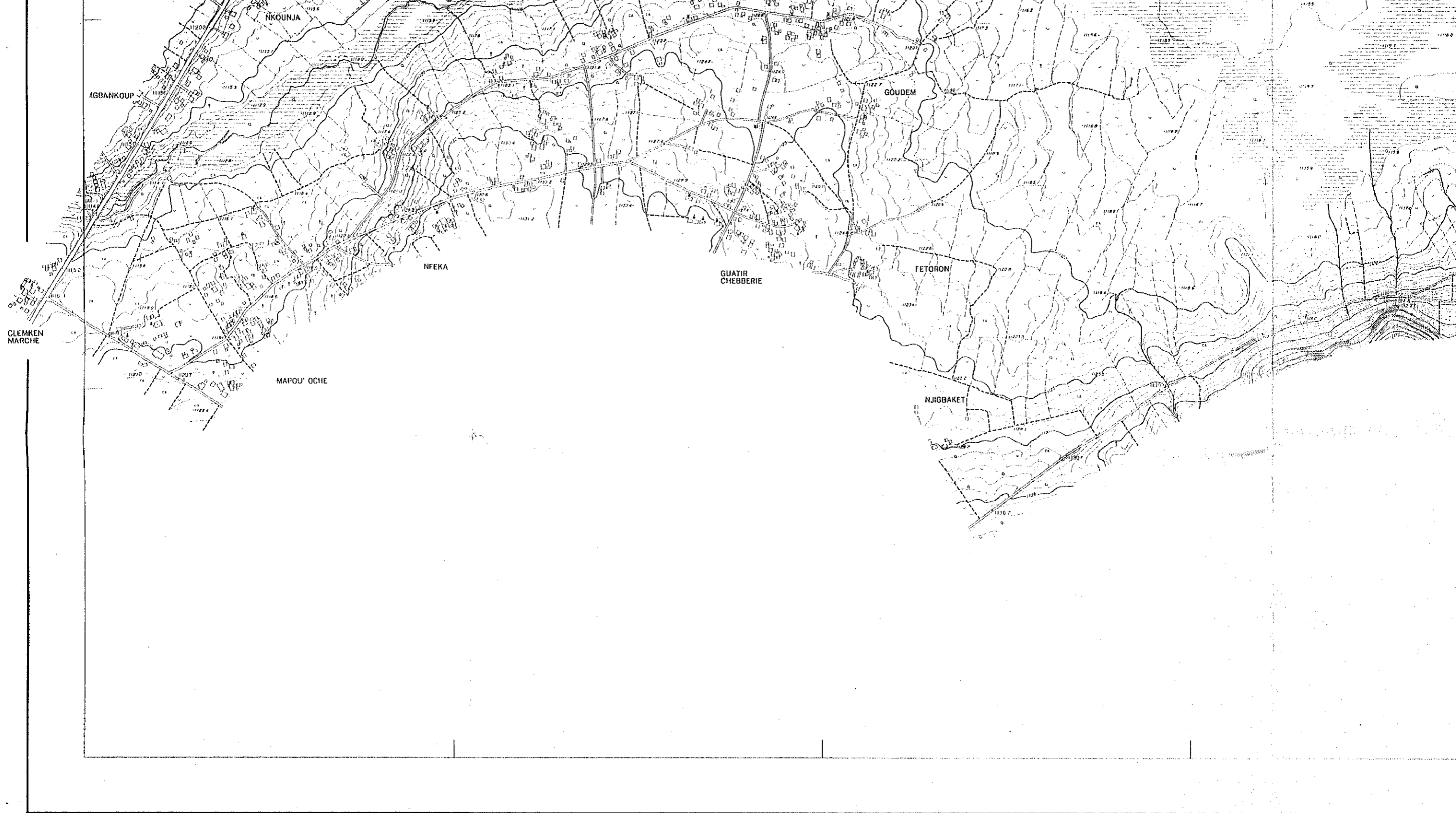
Kilometre



Mean Magnetic Variation for 1981



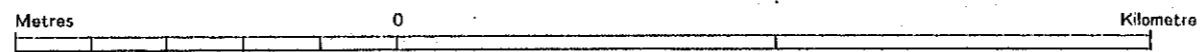
Japan International Cooperation Agency
Prepared in 1985



LEGEND			
	Built-up area		Building to scale
	Principal road		Church
	Secondary road		Mosque
	Lane, Track		School
	Foot Path		Rice Field
	Trigonometrical Station		Plowed Field
	Leveling Station		Other plantations
	Heights - Checked		Forest
	Heights - Unchecked		Cocoa-nut
	Index contour		Hospital
	Intermediate contour		Police station
	Supplementary contour		post office
	Escarpment, Cliff		post office
	Depression		Coffee
	Concrete Bridge		Wood, Brushwood, Scrub, Chena
	Wooden Bridge		Marsh, Swamp
	Foot Bridge		Rock, Distorted surface
	Hut for stock-farming		canal

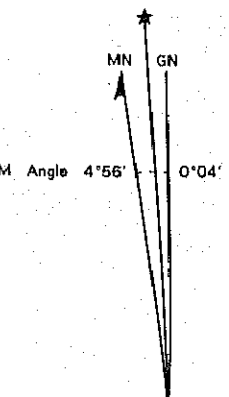


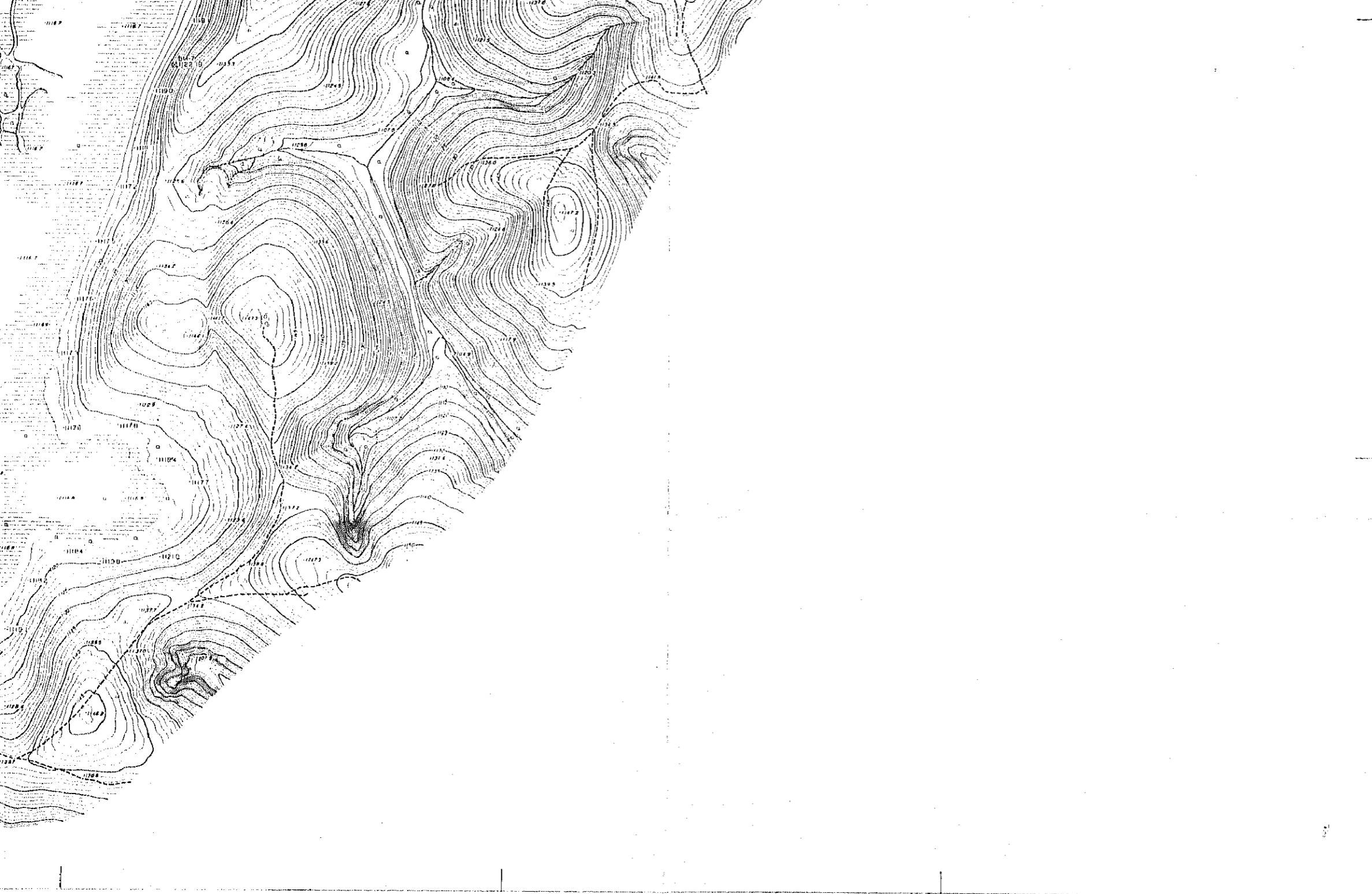
SCALE 1:10,000



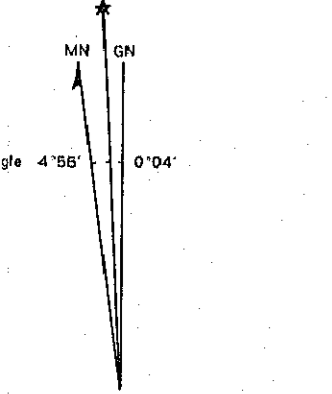
Grid lines 500 metre apart Universal Transverse Mercator (U.T.M)
Clarke 1880 Spheroid.
Grid zone 33. Central meridian: 15° east of Greenwich
Contour interval: 1 metre.

Mean Magnetic Variation





Magnetic Variation for 1981



Japan International Cooperation Agency
Prepared in 1985

