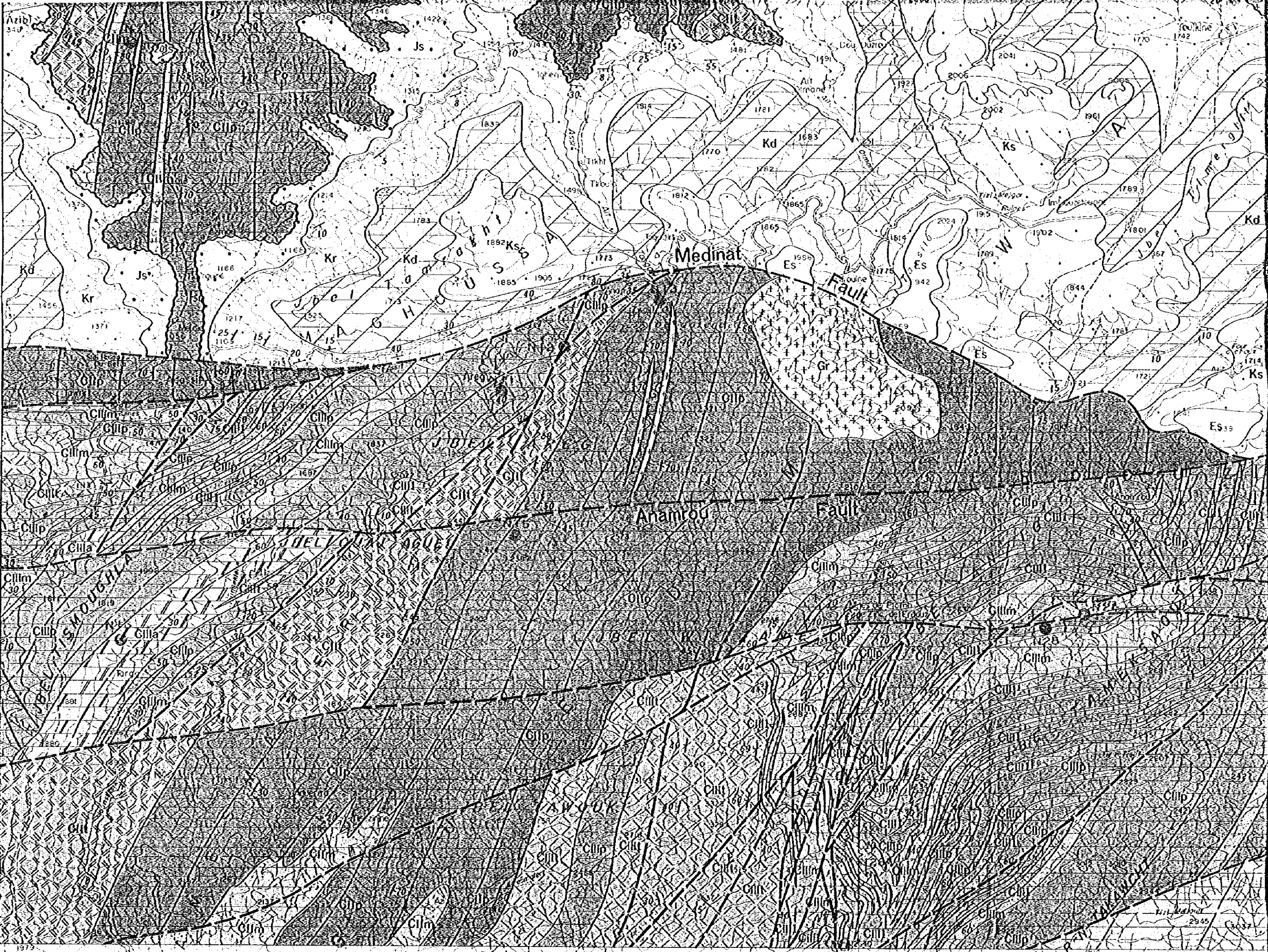


1930

2100



2501 2506 2277

3307

2849

2290

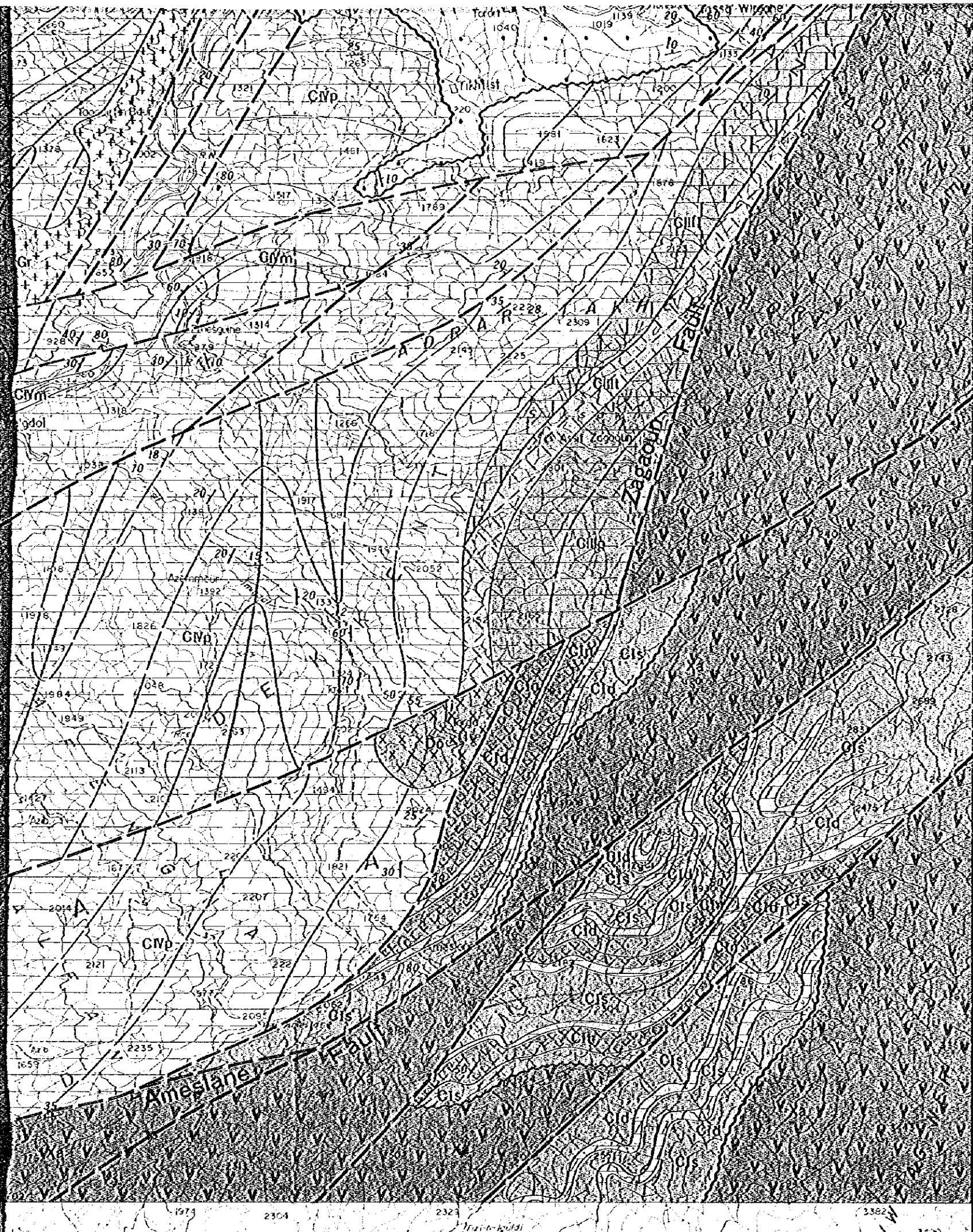
DRAPAN





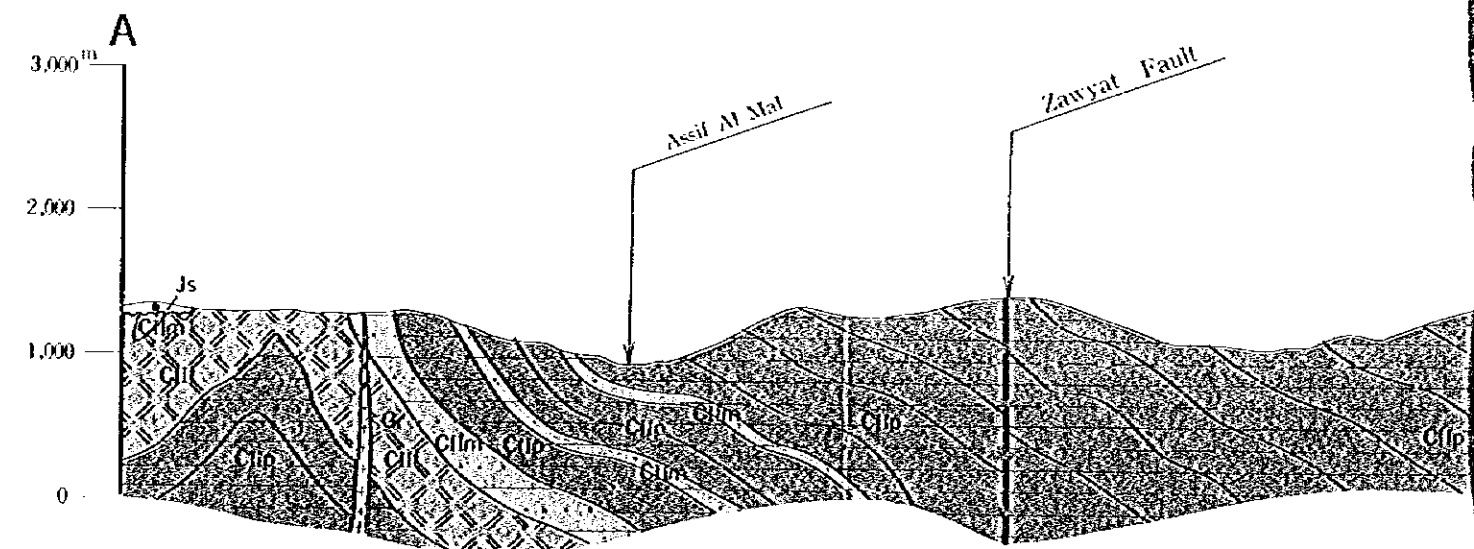
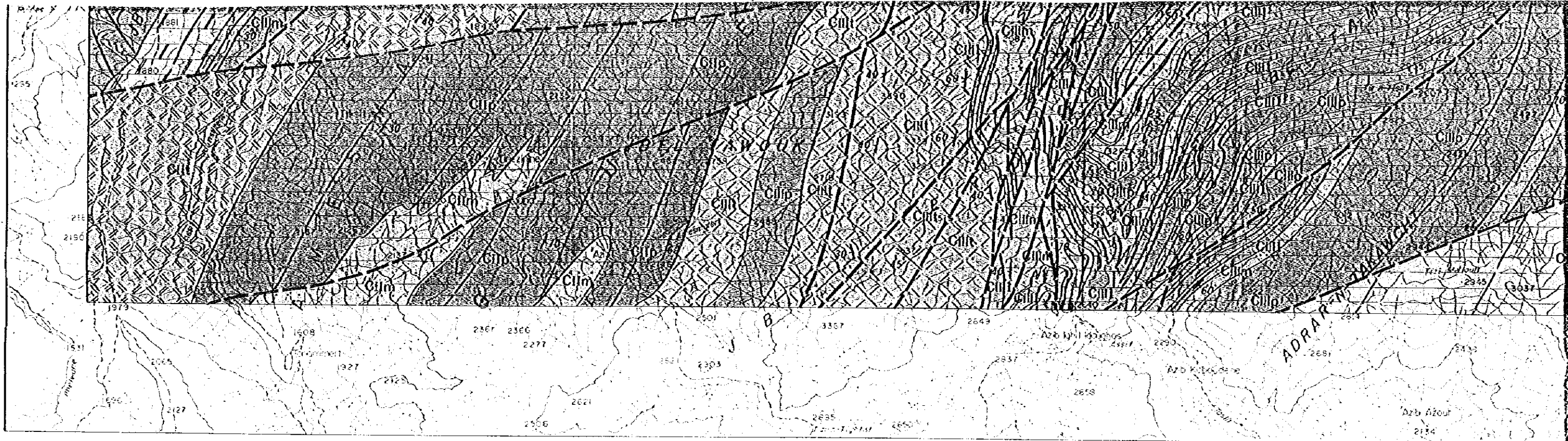


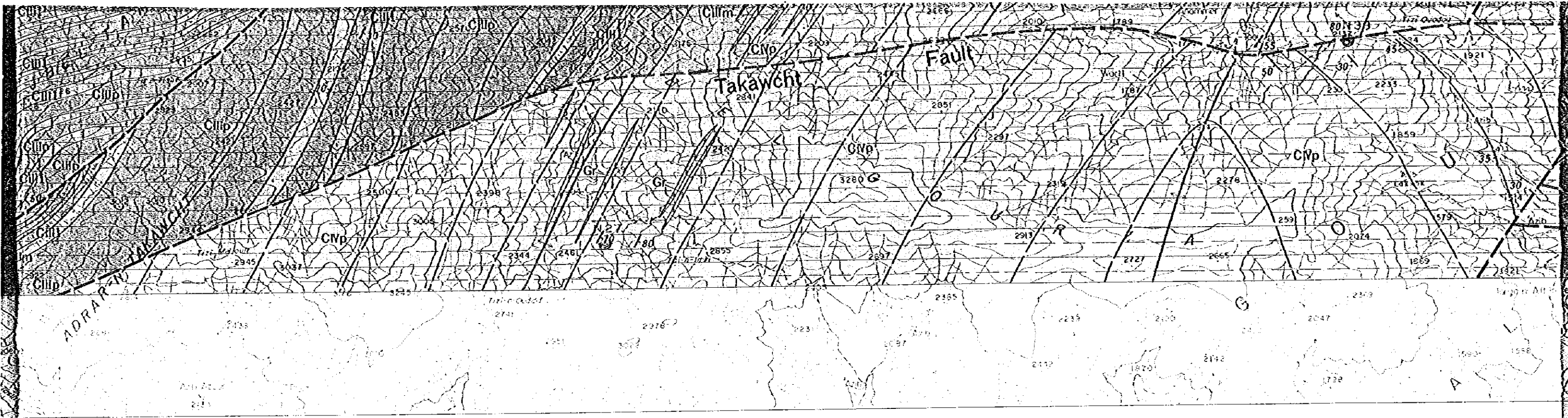
Scale 1 : 50, 000



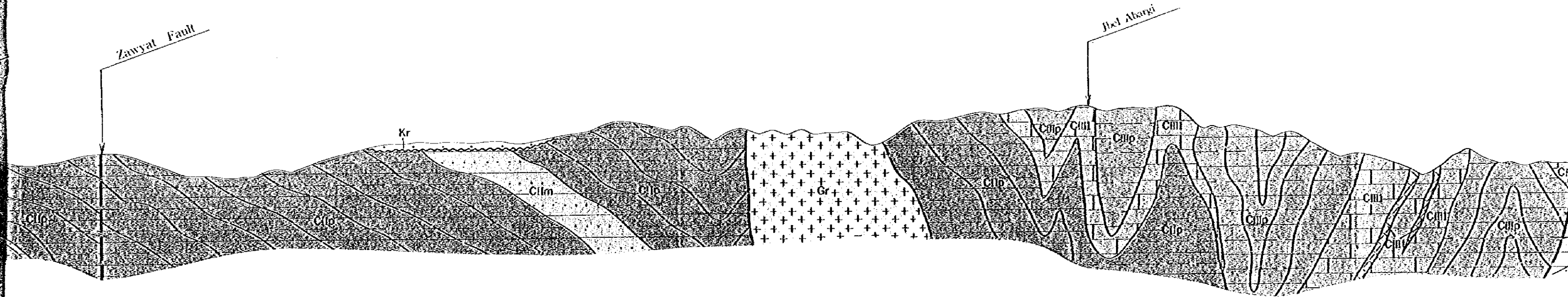
LEGEND

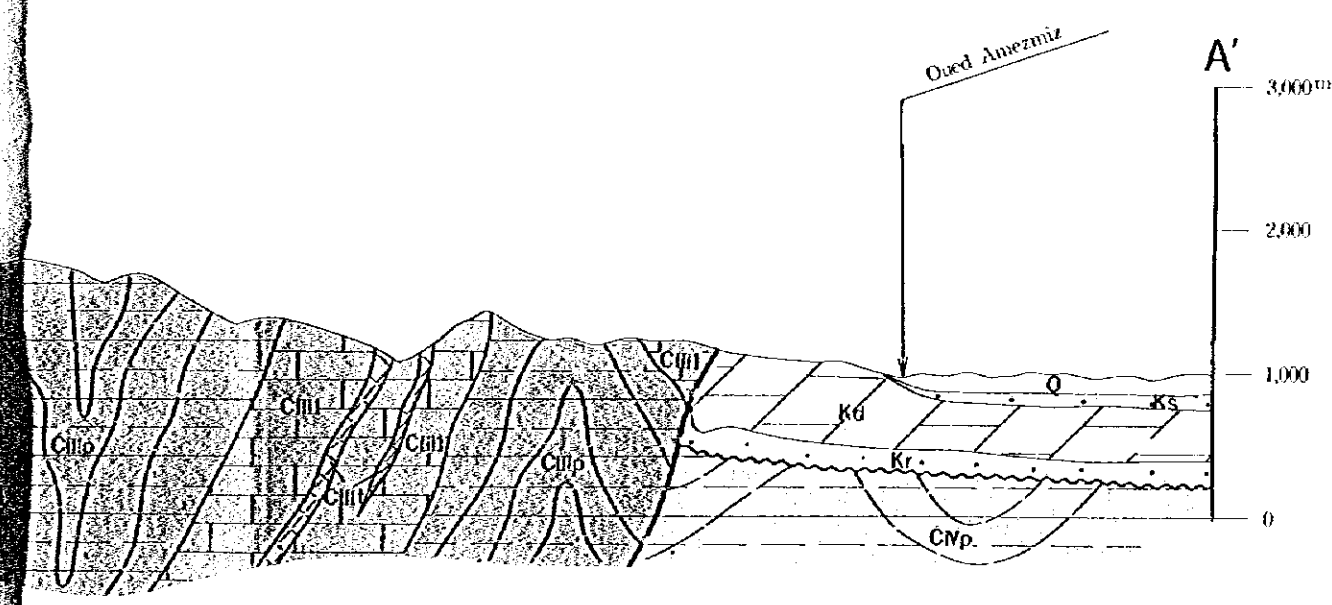
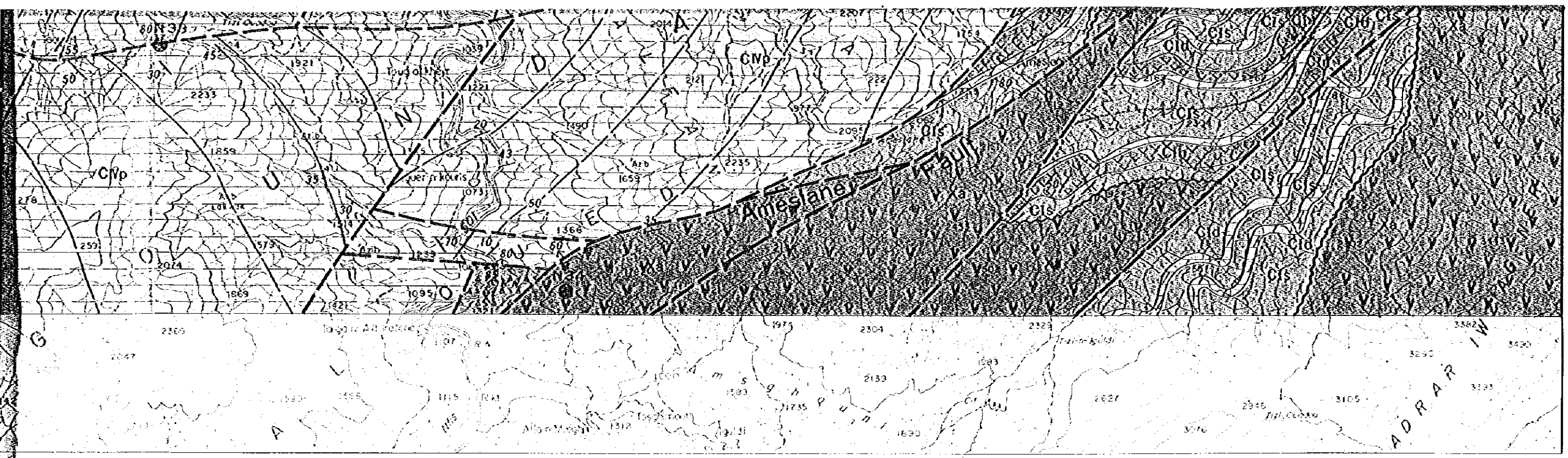
Quaternary		Q	sand, gravel, travertine
Tertiary		Es	sandstone
Cretaceous		Ks	sandstone, siltstone
		Kd	dolomite, siltstone, sandstone
		Kr	red sandstone
		Js	sandstone, siltstone
Jurassic		Js	sandstone, siltstone
		Tb	basalt
Triassic		Ts	sandstone, siltstone
		CIVm	psammitic schist
CIV Formation		CIVp	pelitic schist
		CIVl	limestone
		CIVt	green schist (tuff, tuff breccia)
		CIVn	andesite, tuff, tuff breccia
		CIII m	psammitic schist
CIII Formation		CIII p	pelitic schist
		CIII l	limestone
		CIII fa	calcareous schist
		CIII t	green schist (tuff, tuff breccia)
	Cambrian		



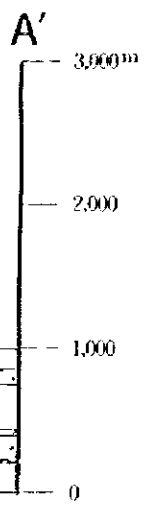
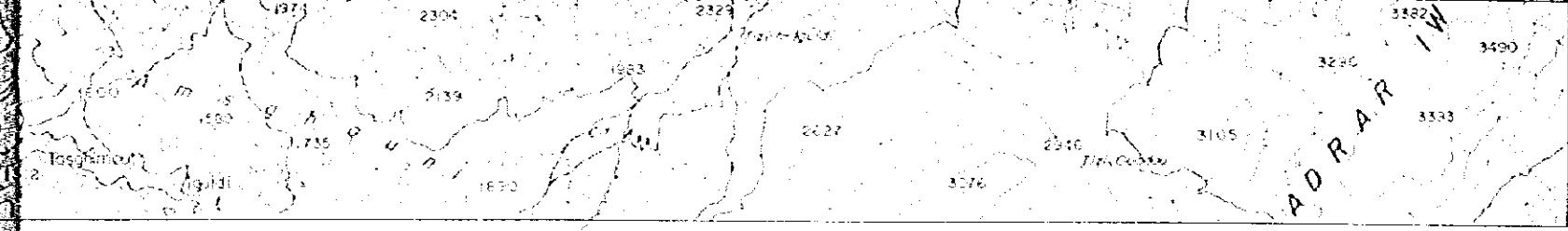
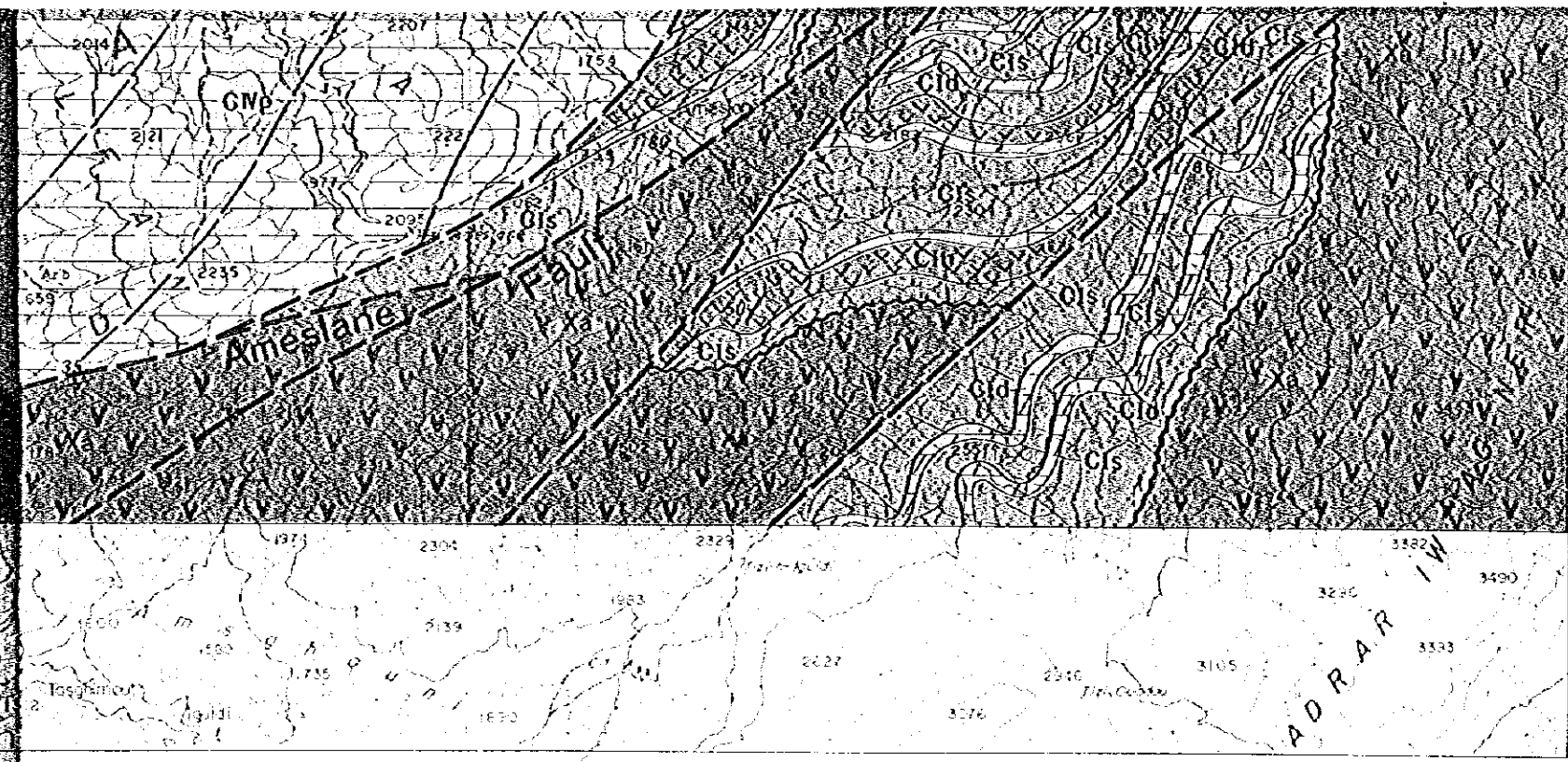


A ——— A'





Ordovician - Cambrian



Cambrian	CIV Formation	CIVp	pelitic schist
		CIV1	limestone
		CIVt	green schist (tuff, tuff breccia)
		CIVn	andesite, tuff, tuff breccia
Cambrian	CIII Formation	CIIIa	psammitic schist
		CIIIp	pelitic schist
		CIII1	limestone
		CIIIa	calcareous schist
		CIIIt	green schist (tuff, tuff breccia)
Ordovician	CII Formation	CIIa	psammitic schist
		CIIp	pelitic schist
		CII1	limestone
		CIIt	green schist (tuff, tuff breccia)
		CIIa	andesite, tuff, tuff breccia
		CIIc	siltstone, sandstone
		CIIi	andesite, tuff, tuff breccia
Cambrian	CI Formation	CI	limestone
		CId	dolomite
		CIc	conglomerate
		Xa	andesite
		Xt	tuff, lapilli tuff, tuff breccia
		Xb	andesite, tuff, tuff breccia
Intrusive rock	Gr	granite, diorite	
	Po	porphyrite	
	Do	dolerite	
	- - -	fault	
	~~~~~	unconformity	
//////	anticlinal axis/synclinal axis/overtuned fold		
~~~~~	stratigraphic boundary		
/ / /	bedding plane		
N1 N34	mineral indication		