

JAPAN INTERNATIONAL COOPERATION AGENCY
 METAL MINING AGENCY OF JAPAN
 JANUARY 1984
 Prepared by MINDECO

Scale 1 : 2,000



LEGEND

Quaternary		Q	sand, gravel, travertine
		Ks	sandstone, siltstone, limestone, dolomite
Cretaceous		Kc	conglomerate
		Pp	pelitic schist
		Ps	spotted schist
Cambrian		Pg	gneissose schist
		Pa	calcareous schist
		Pl	limestone
		Gr	granite
Intrusive rock		Po	porphyrite
		Ba	basalt, amphibolite, lamprophyre
		Sk	skarn (garnet, hedenbergite, epidote, wollastonite)
		vein	(q - quartz, h - hematite)





SOUK

1480

1500

Q

Gr

Ks

Po

1580

1560

1540

500

1520

1500

800

1500

1200

1540

1560

1400

Kc

Kc

Kc

Kc

Kc

Kc

Kc

Kc

Kc



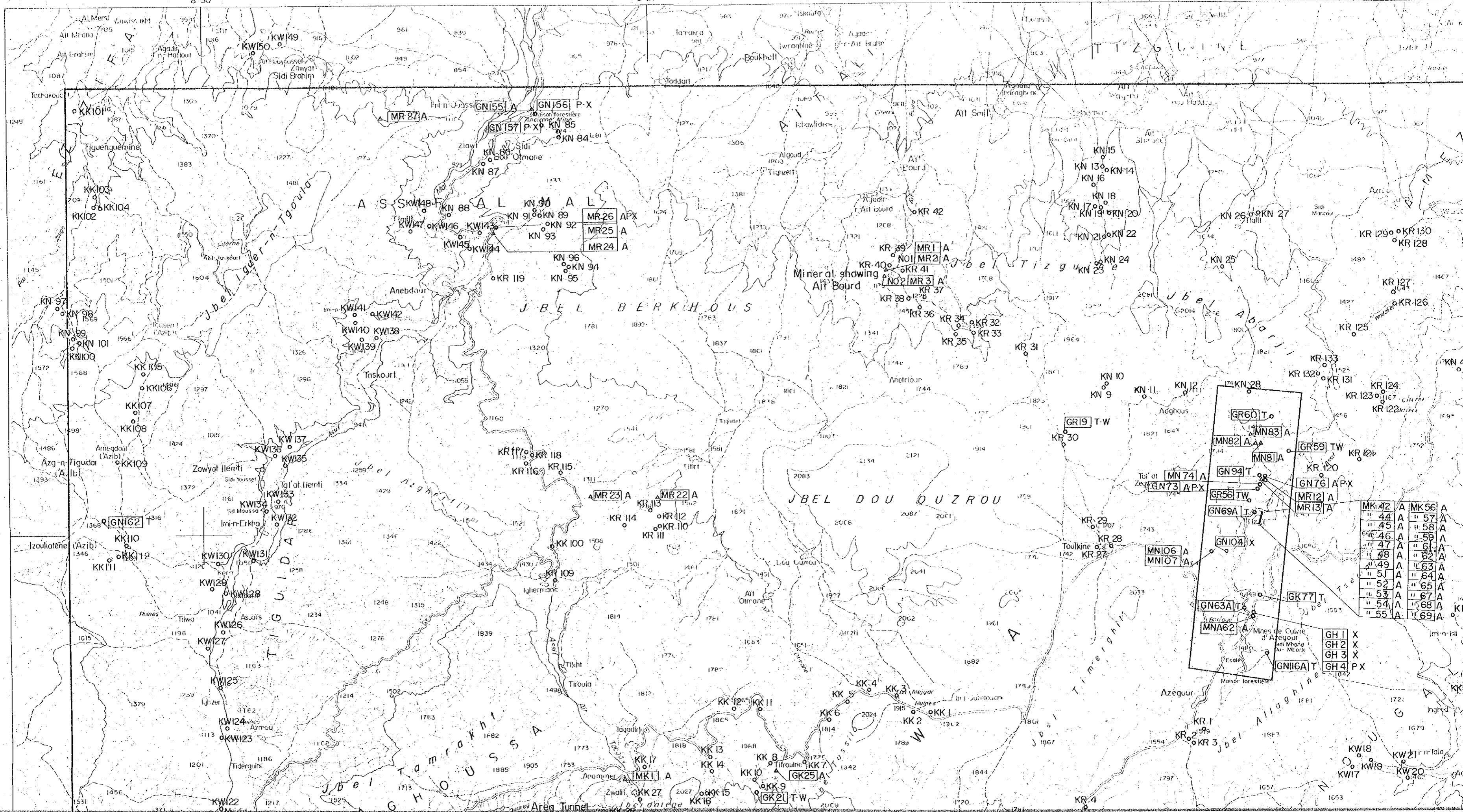
- Cambrian
- Pa calcareous schist
 - Pl limestone
 - Gr granite
- Intrusive rock
- Po porphyrite
 - Ba basalt, amphibolite, lamprophyre
 - Sk skarn (garnet, hedenbergite, epidote, wollastonite)
- vein (q quartz, h hematite)
- fault
 - unconformity
 - bedding plane

- Fe
- $Fe \geq 11.51\%$
 - $11.51 > Fe \geq 5.11\%$
 - $5.11 > Fe \geq 2.27\%$
- W
- $W \geq 54 \text{ ppm}$
 - $54 > W \geq 13 \text{ ppm}$
 - $13 > W \geq 3 \text{ ppm}$

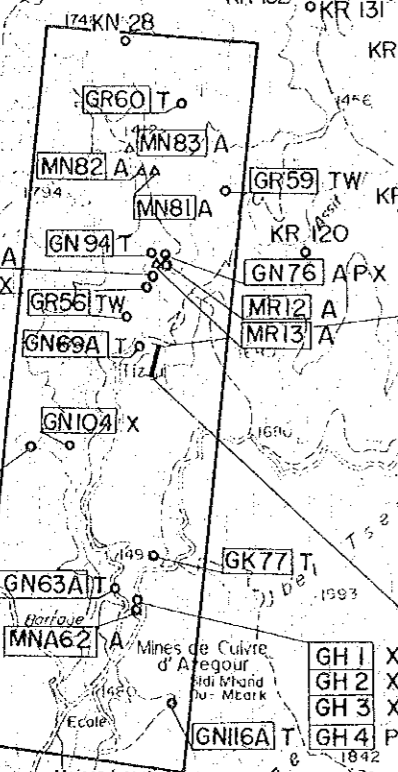
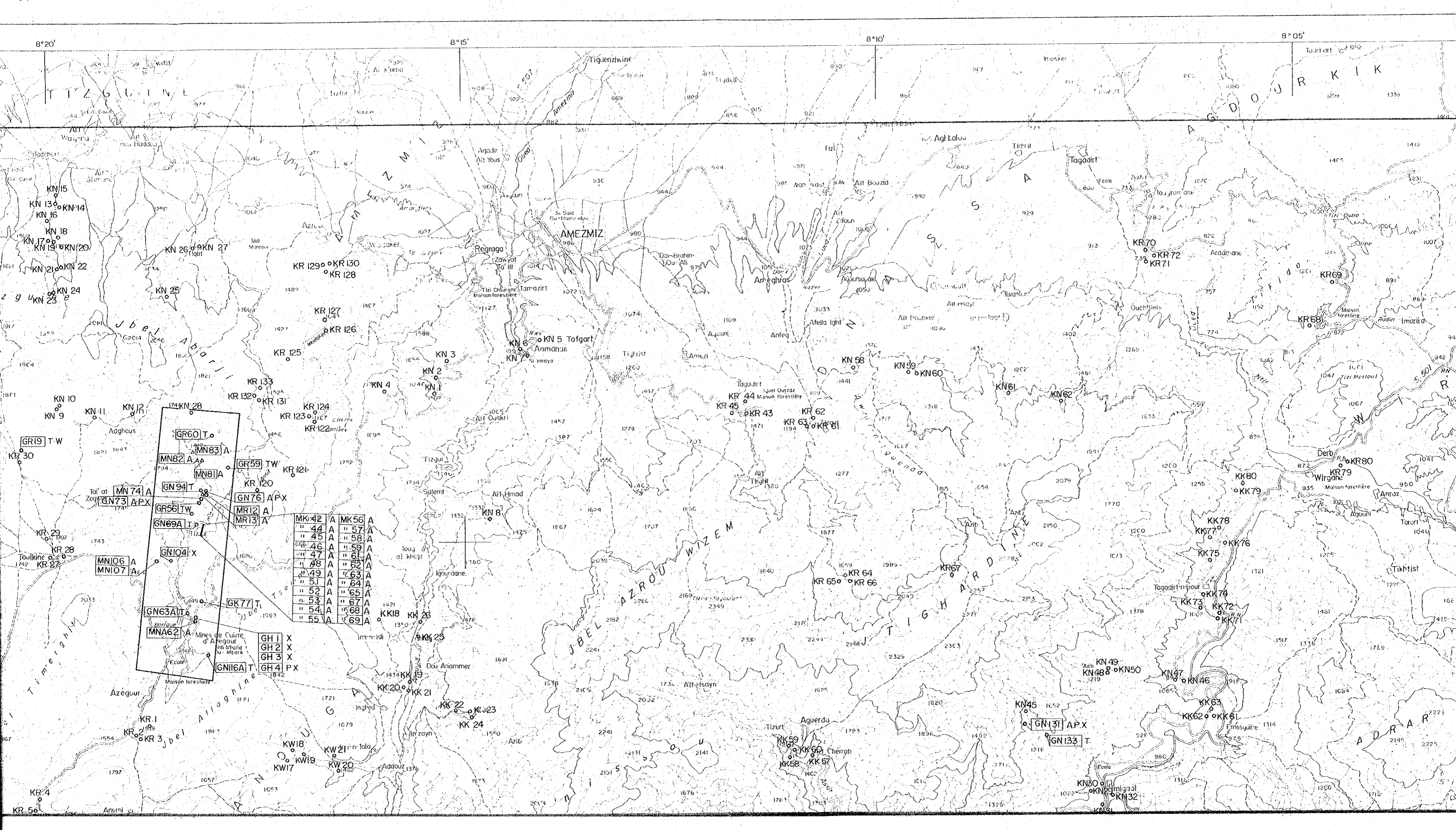
○	RW 72	304	2
	Sample No	Fe (%)	W (ppm)

▲ Sample analysed by B. R. P. M.

31°15' 8°30' 8°25' 8°20'



GR60	T		
MN82	A	A	
MN81	A		
GR59	TW		
MN74	A		
GN94	T		
GN73	APX		
GR56	TW		
GN69A	T		
GN104	X		
MN106	A		
MN107	A		
GN63A	T		
MNA62	A		
GN116A	T		
MK42	A	MK56	A
" 44	A	" 57	A
" 45	A	" 58	A
" 46	A	" 59	A
" 47	A	" 61	A
" 48	A	" 62	A
" 49	A	" 63	A
" 51	A	" 64	A
" 52	A	" 65	A
" 53	A	" 67	A
" 54	A	" 68	A
" 55	A	" 69	A
GH1	X		
GH2	X		
GH3	X		
GH4	PX		



MK 42	A	MK 56	A
" 44	A	" 57	A
" 45	A	" 58	A
" 46	A	" 59	A
" 47	A	" 61	A
" 48	A	" 62	A
" 49	A	" 63	A
" 51	A	" 64	A
" 52	A	" 65	A
" 53	A	" 67	A
" 54	A	" 68	A
" 55	A	" 69	A

GH 1	X
GH 2	X
GH 3	X
GH 4	PX

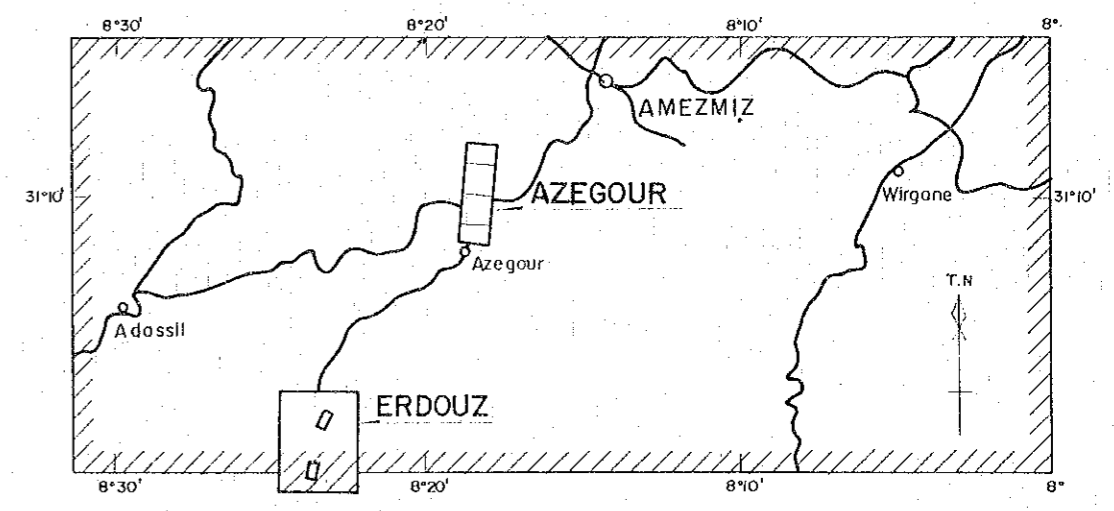
GH 1 X
GH 2 X
GH 3 X
GH 4 PX

Mines de Cuivre d'Azéhour
Sidi Mhand
Meark
Ecole
Maison forestière

国際協力事業団
11636
図書資料室蔵書

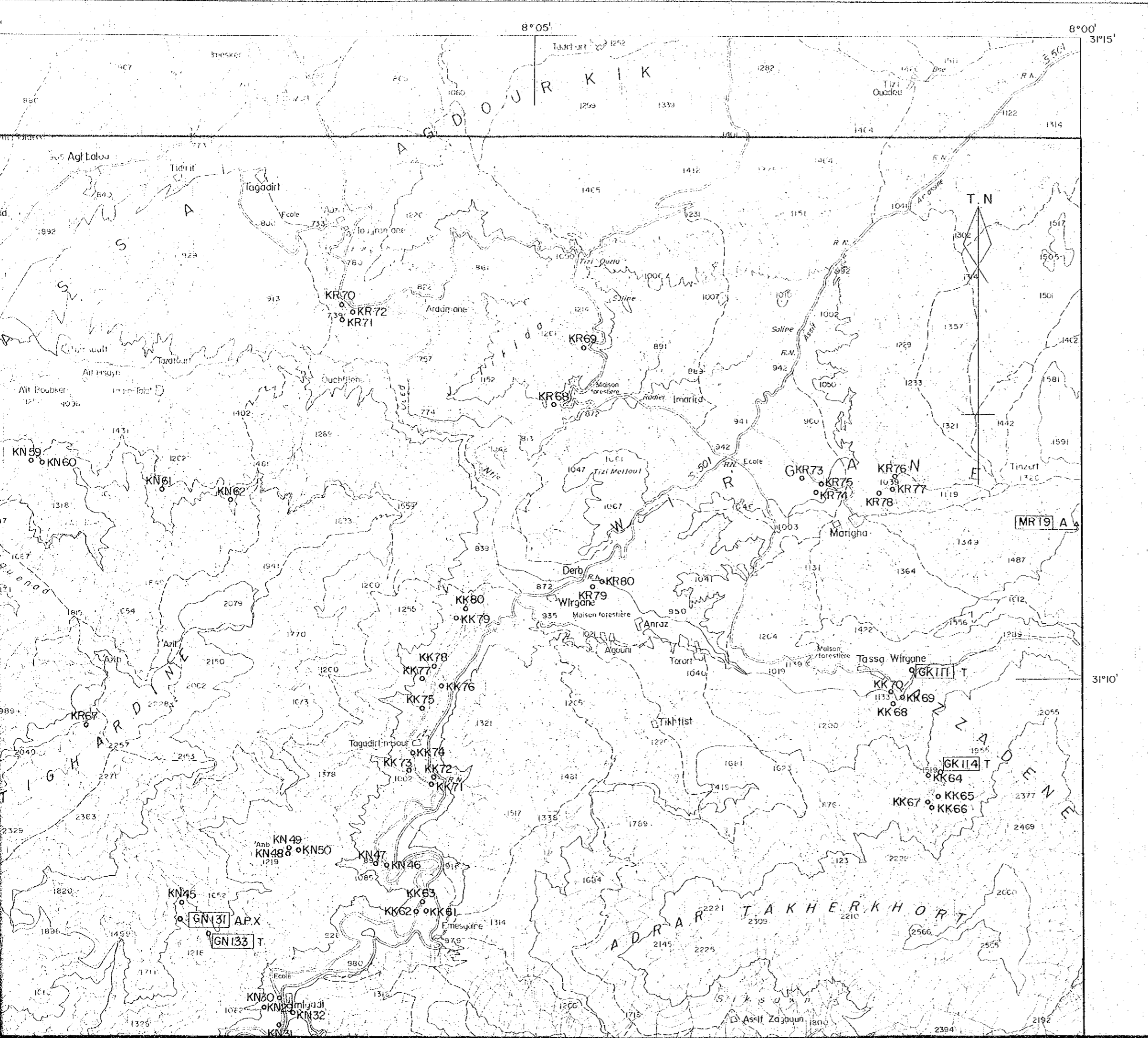
GEOLOGICAL SURVEY
OF
HAUT ATLAS OCCIDENTAL AREA, MOROCCO
(PHASE I)

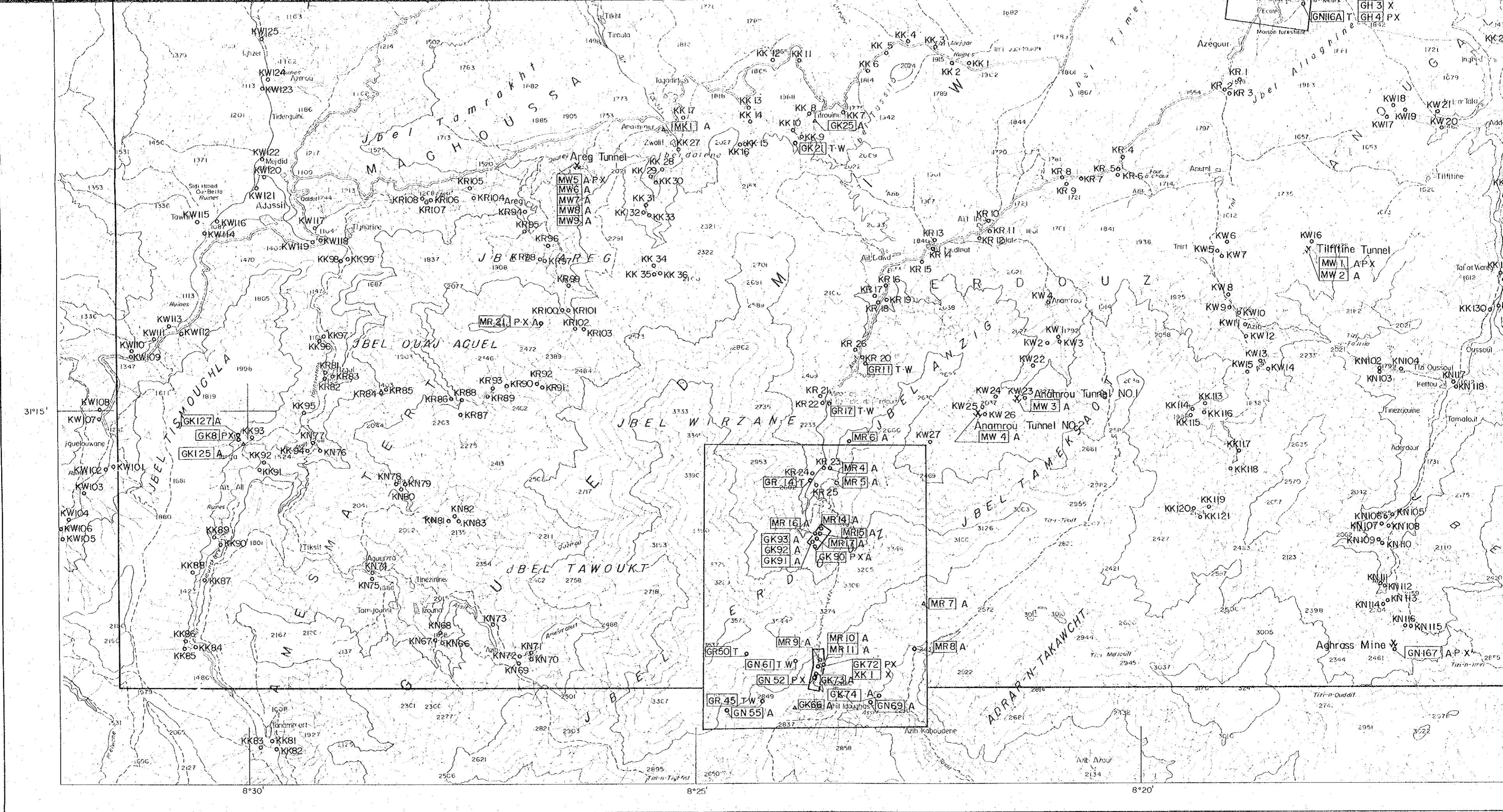
SAMPLE LOCATION MAP
OF NORTHERN AREA



JAPAN INTERNATIONAL COOPERATION AGENCY
METAL MINING AGENCY OF JAPAN
JANUARY 1984
Prepared by MINDECO

Scale 1 : 50,000





GH 3 X
GH 4 PX

8°30'

8°25'

8°20'

31°15'

31°15'

31°15'

31°15'

31°15'

31°15'

31°15'

31°15'

31°15'

31°15'

31°15'

31°15'

31°15'

31°15'

31°15'

31°15'

31°15'

31°15'

31°15'

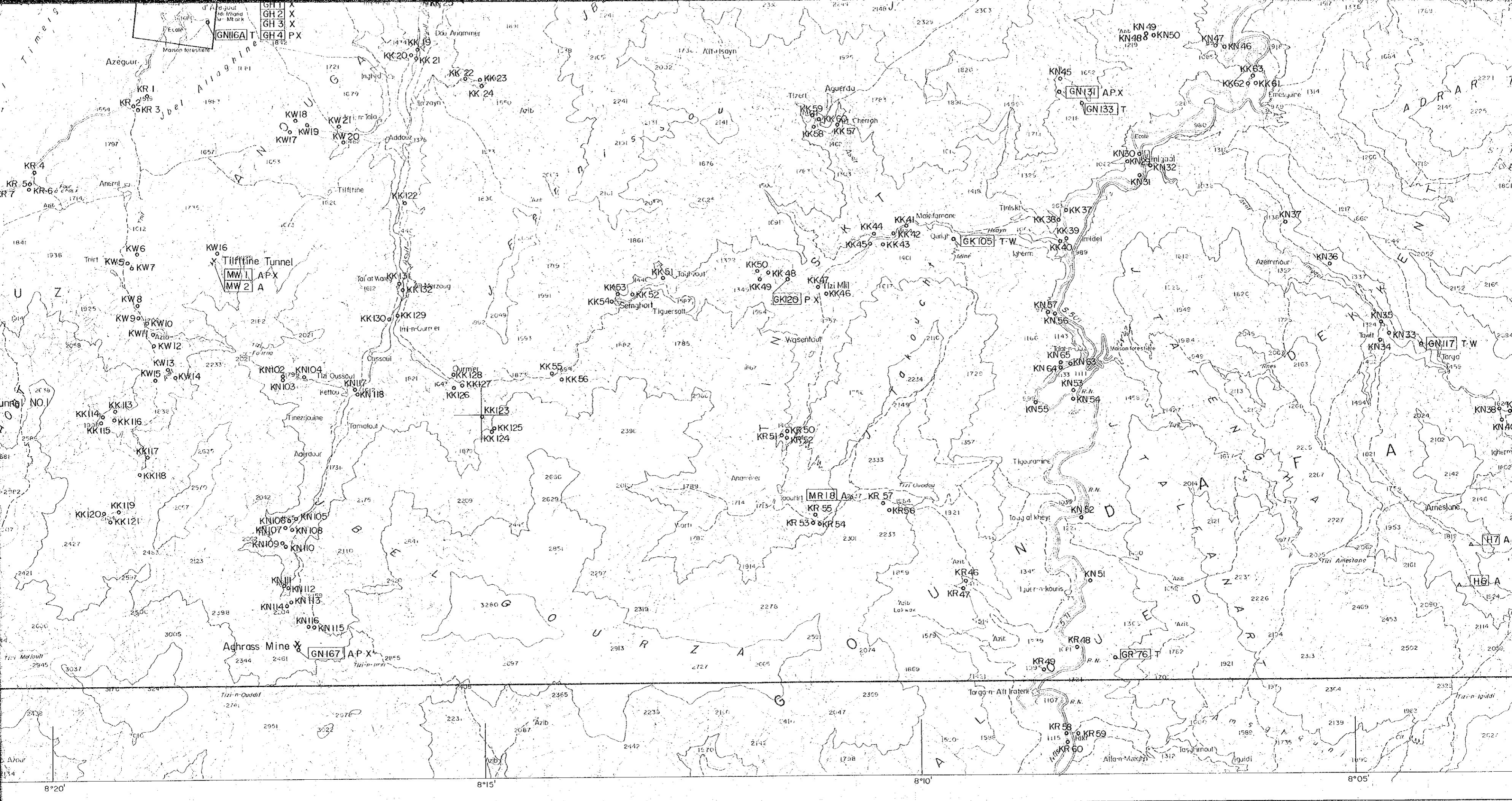
31°15'

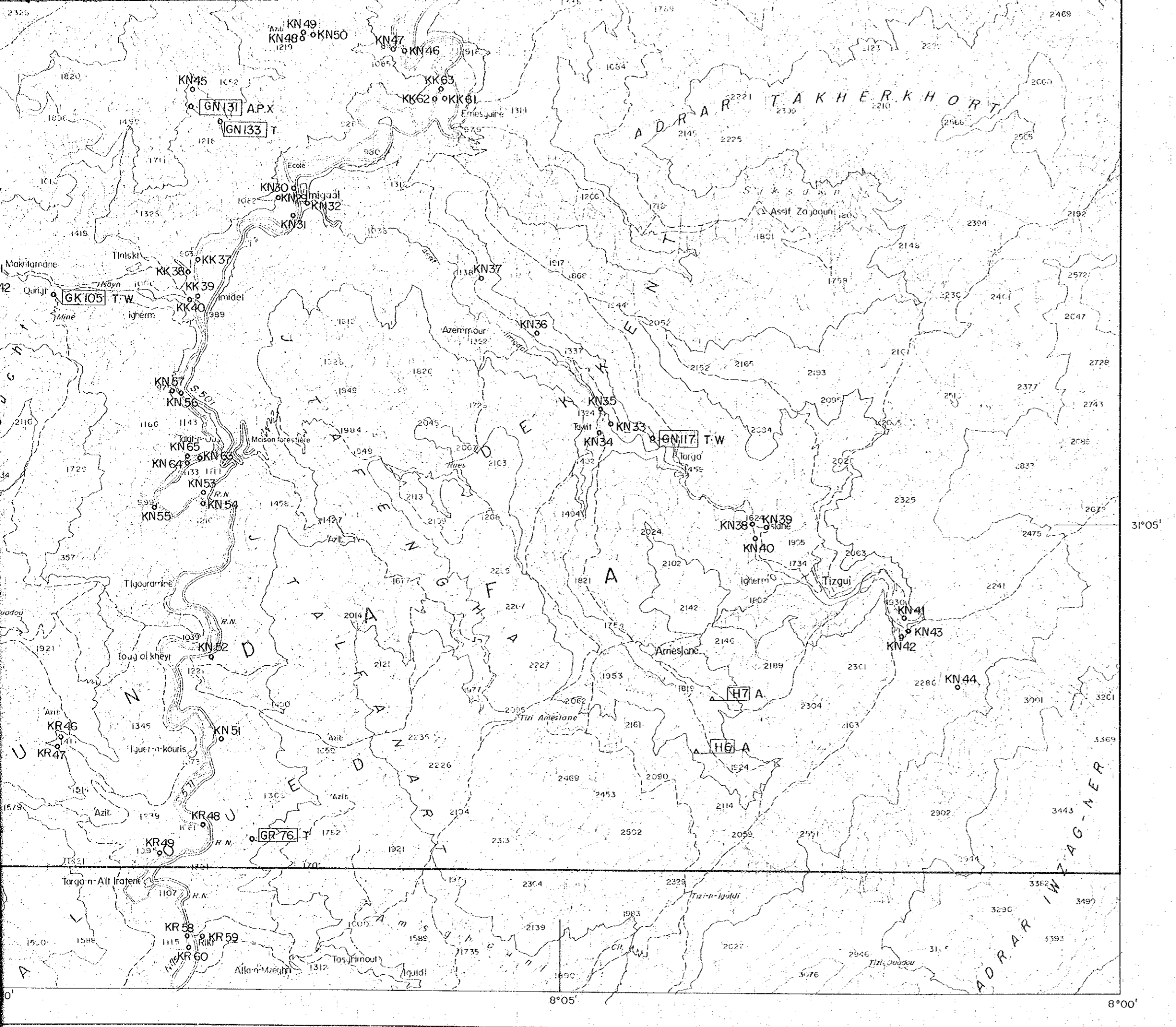
31°15'

31°15'

31°15'

31°15'



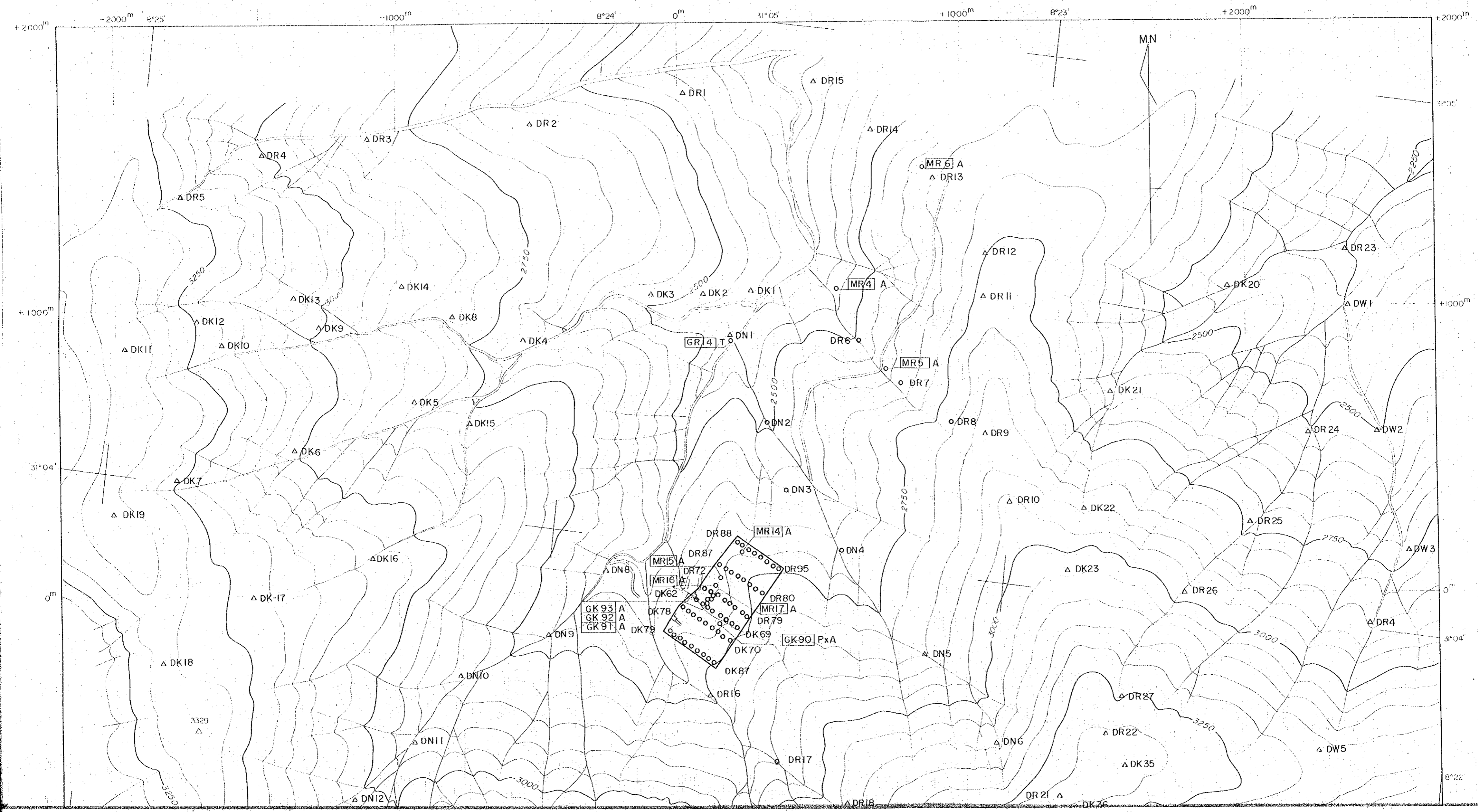


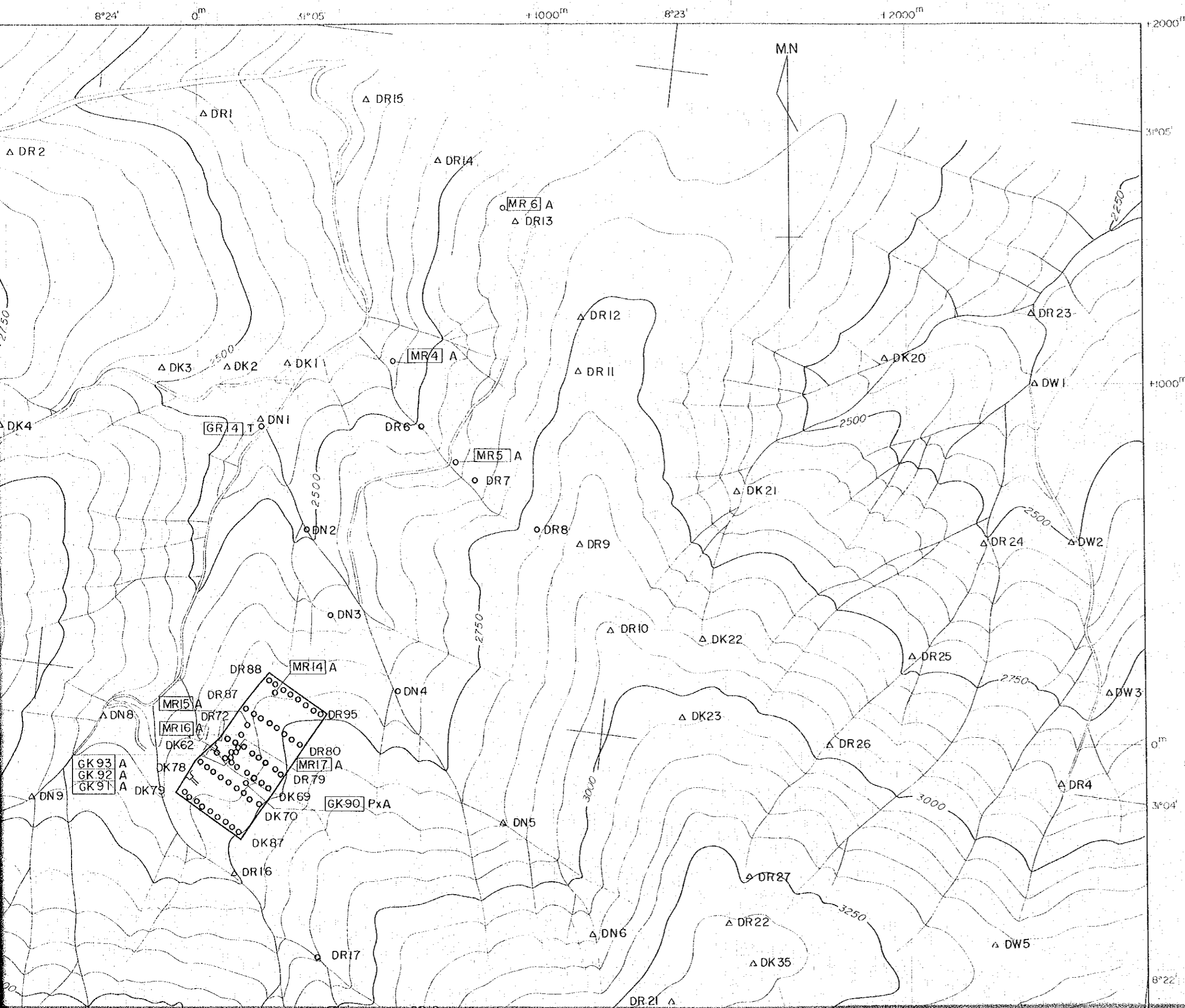
Scale 1 : 50,000



LEGEND

- MR 1 A Sample location for chemical analysis
- GN 21 T Sample location for thin section
- MW 1 P Sample location for polished section
- GN 131 X Sample location for x-ray analysis
- GR 11 W Sample location for whole rock analysis
- CR 1 Sample location for geochemical analysis
- △ Sample analysed by B.R.P.M.
- ✕ Non-active mine



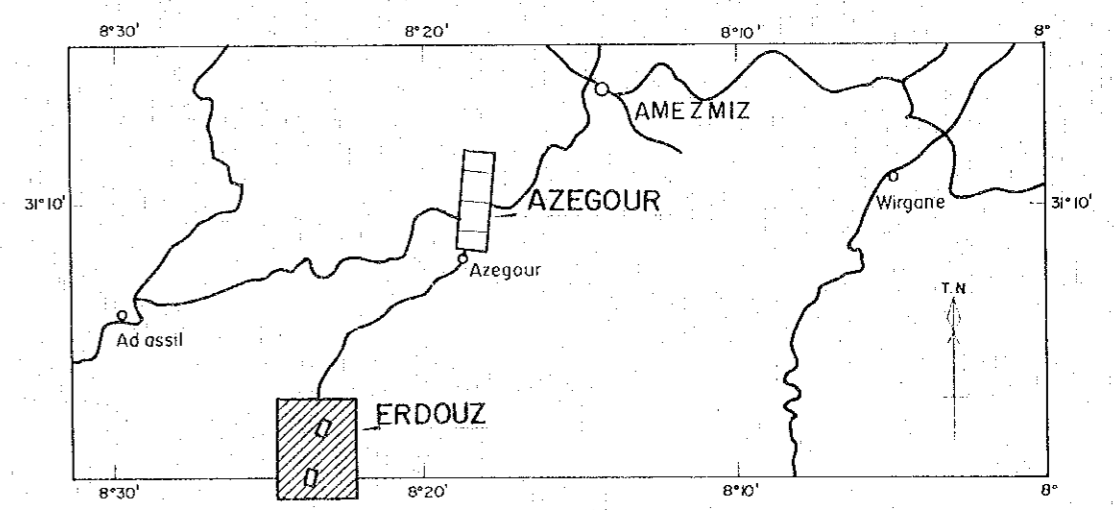


国際協力事業団
 11636
 図書資料室蔵書

PL. II

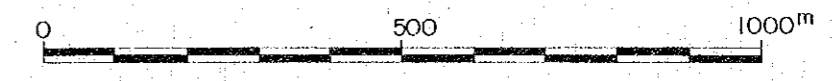
GEOLOGICAL SURVEY
 OF
 HAUT ATLAS OCCIDENTAL AREA, MOROCCO
 (PHASE I)

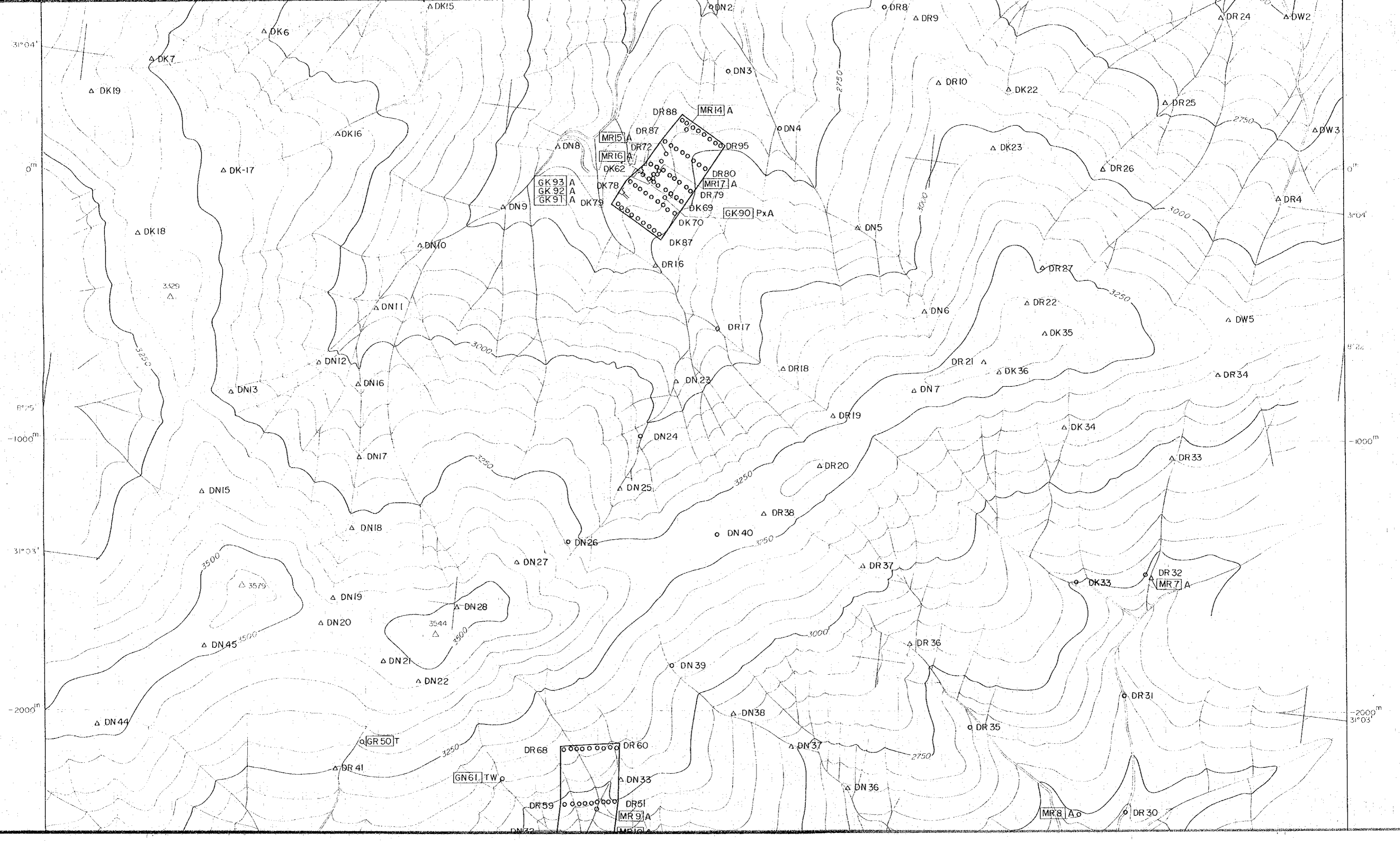
SAMPLE LOCATION MAP
 OF ERDOUZ SECTOR

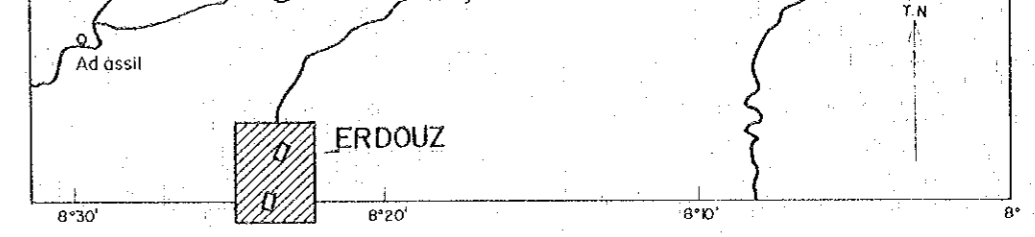
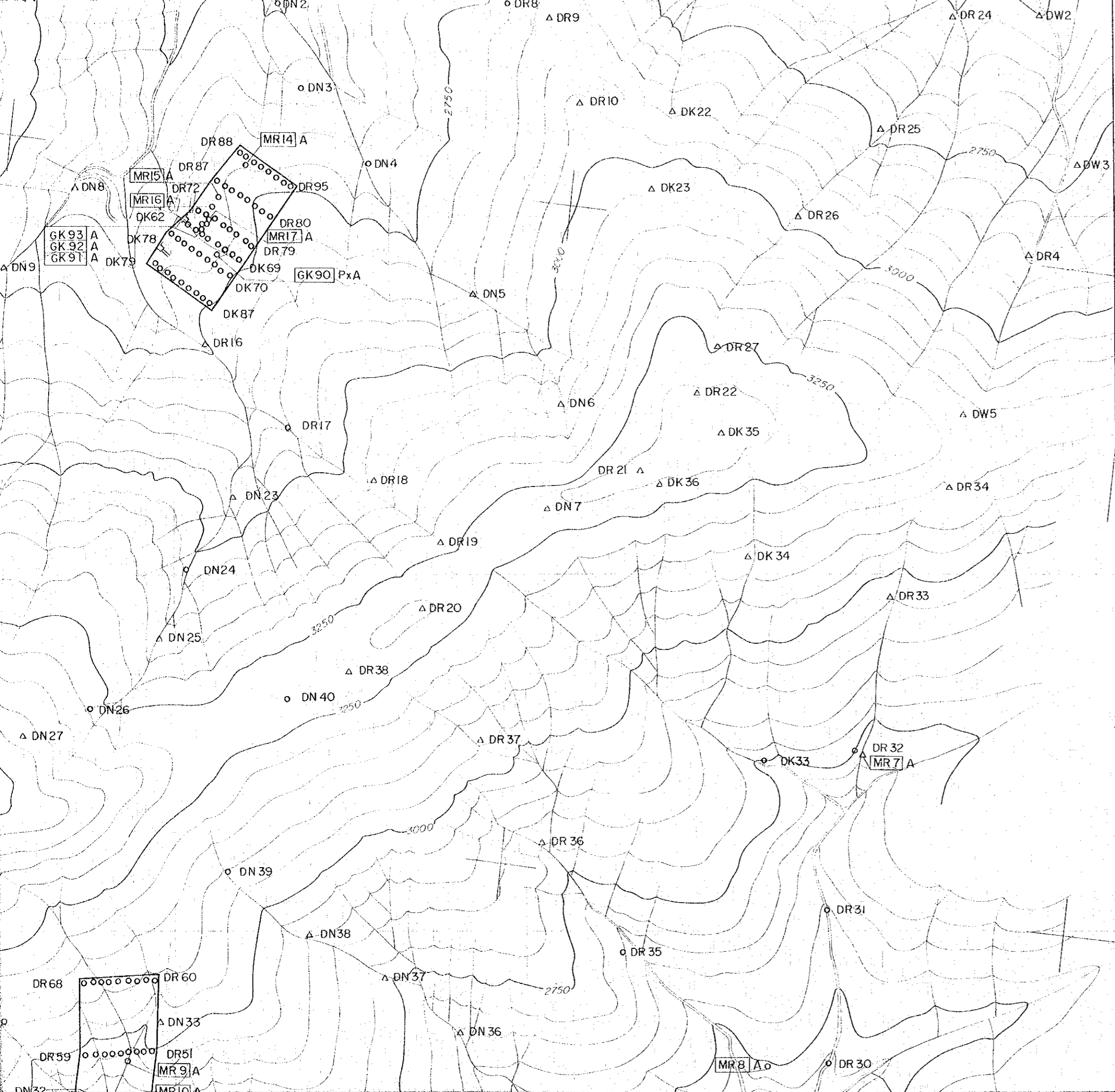


JAPAN INTERNATIONAL COOPERATION AGENCY
 METAL MINING AGENCY OF JAPAN
 JANUARY 1984
 Prepared by MINDECO

Scale 1 : 10,000

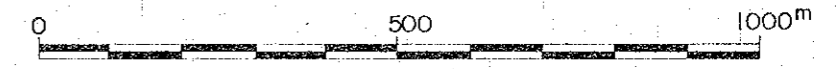






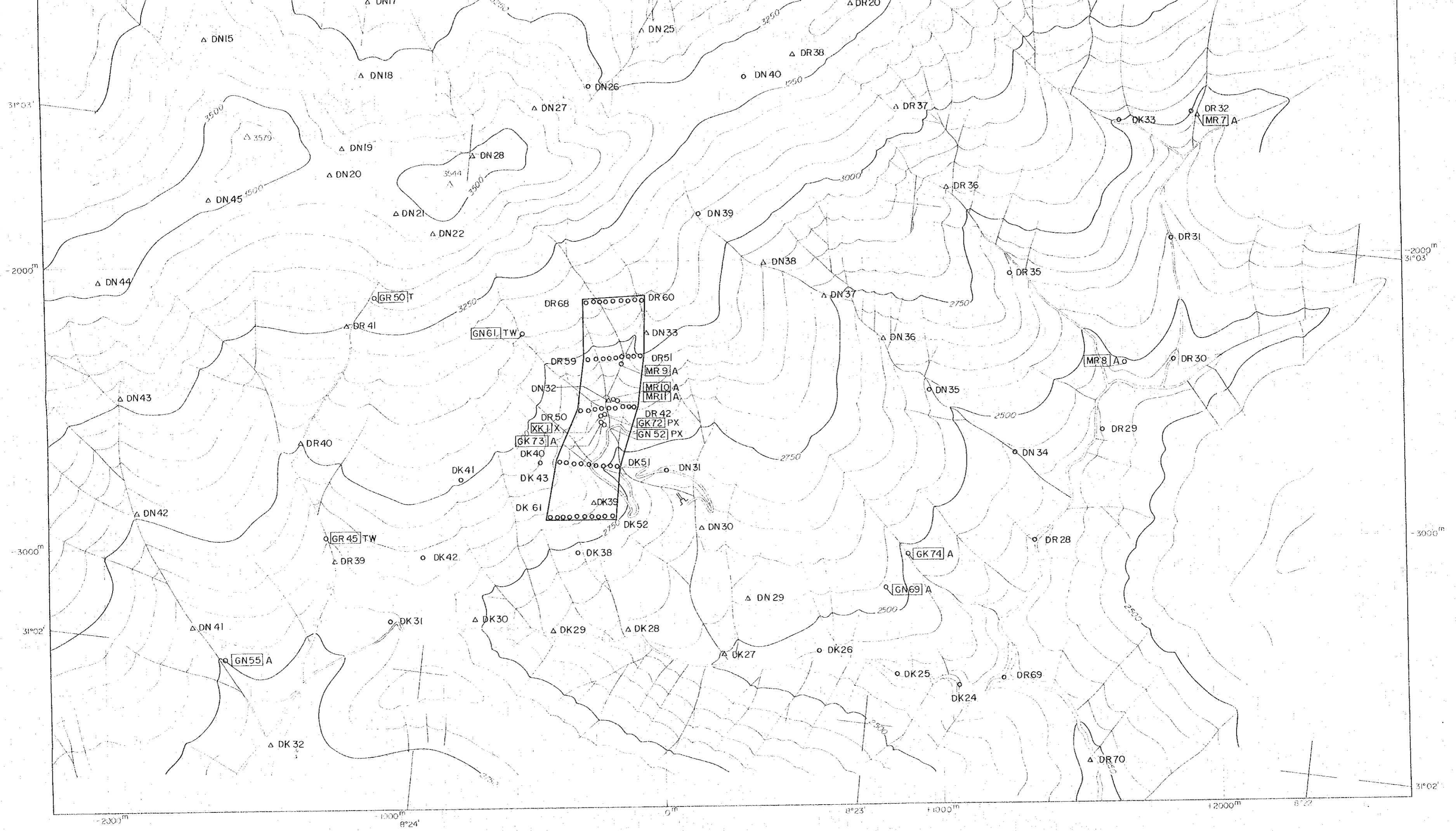
JAPAN INTERNATIONAL COOPERATION AGENCY
 METAL MINING AGENCY OF JAPAN
 JANUARY 1984
 Prepared by MINDECO

Scale 1 : 10,000



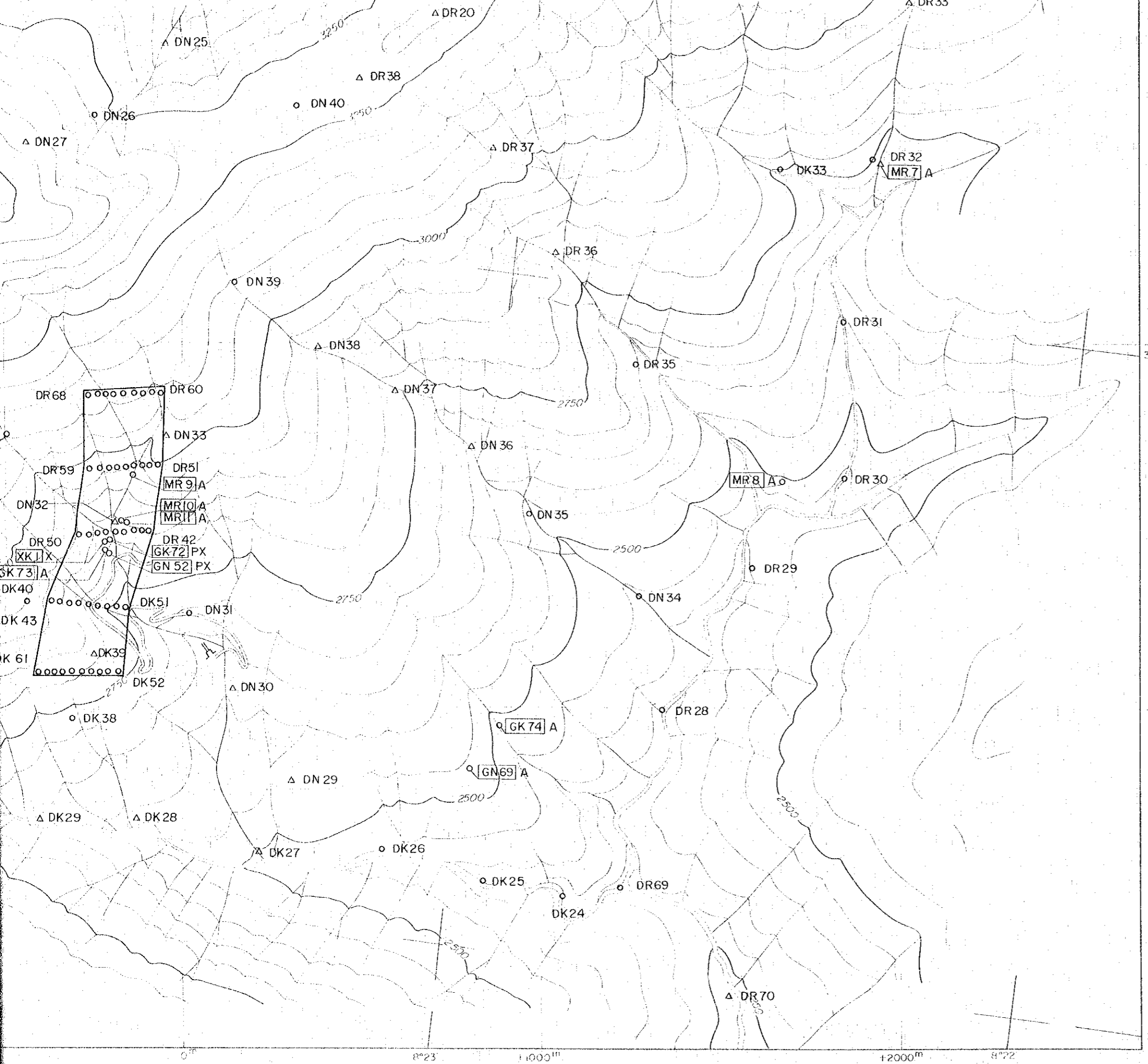
LEGEND

- [MR 4] A Sample location for chemical analysis
- [GN 61] T Sample location for thin section
- [GK 72] P Sample location for polished section
- [XK 1] X Sample location for x-ray analysis
- [GR 45] W Sample location for whole rock analysis
- DR 1 Sample location for geochemical analysis
- △ Sample analysed by B.R.P.M.



LEGEND

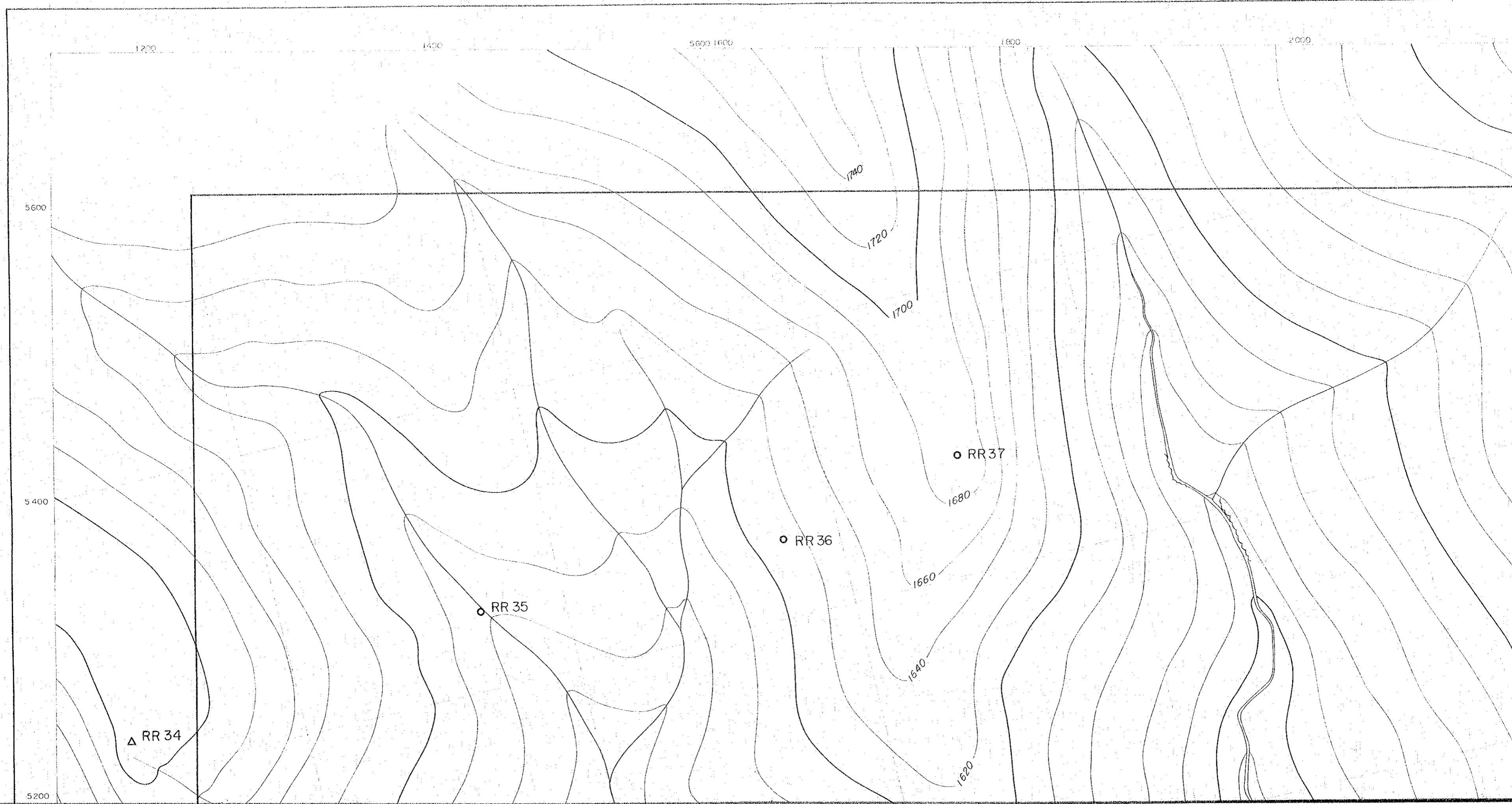
- [MR 4] A Sample location for chemical analysis
- [GN61] T Sample location for thin section
- [GK72] P Sample location for polished section
- [XK 1] X Sample location for x-ray analysis
- [GR 45] W Sample location for whole rock analysis
- DR 1 Sample location for geochemical analysis
- △ Sample analysed by B.R.P.M.



2000m
31°03'

3000m

31°02'



1200

1400

1600

1800

2000

5600

5400

5200

1740

1720

1700

RR 37

1680

RR 36

1660

RR 35

1640

RR 34

1620