

国際協力事業団

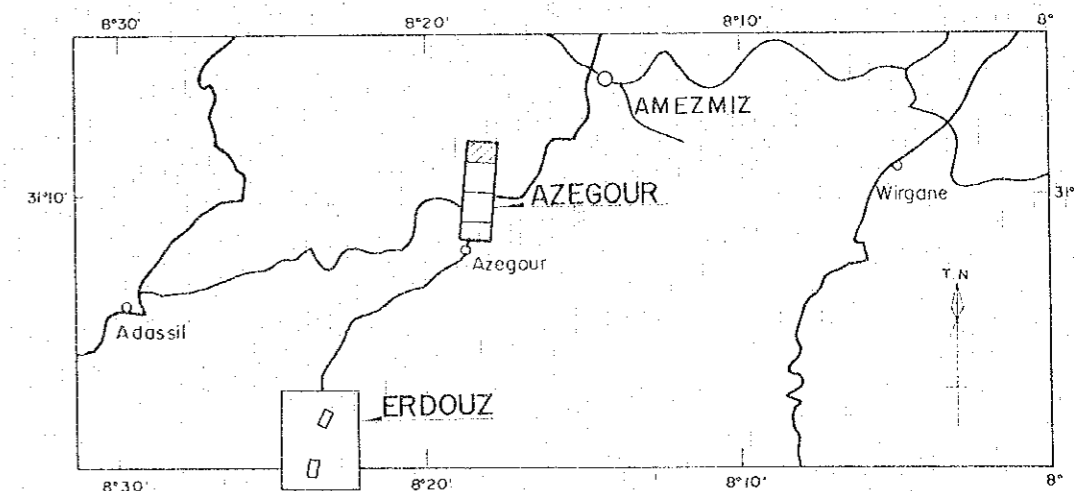
11636

図書資料室蔵書

GEOLOGICAL SURVEY
OF

HAUT ATLAS OCCIDENTAL AREA, MOROCCO
(PHASE I)

GEOCHEMICAL MAP FOR Fe AND W IN AZEGOUR SECTOR

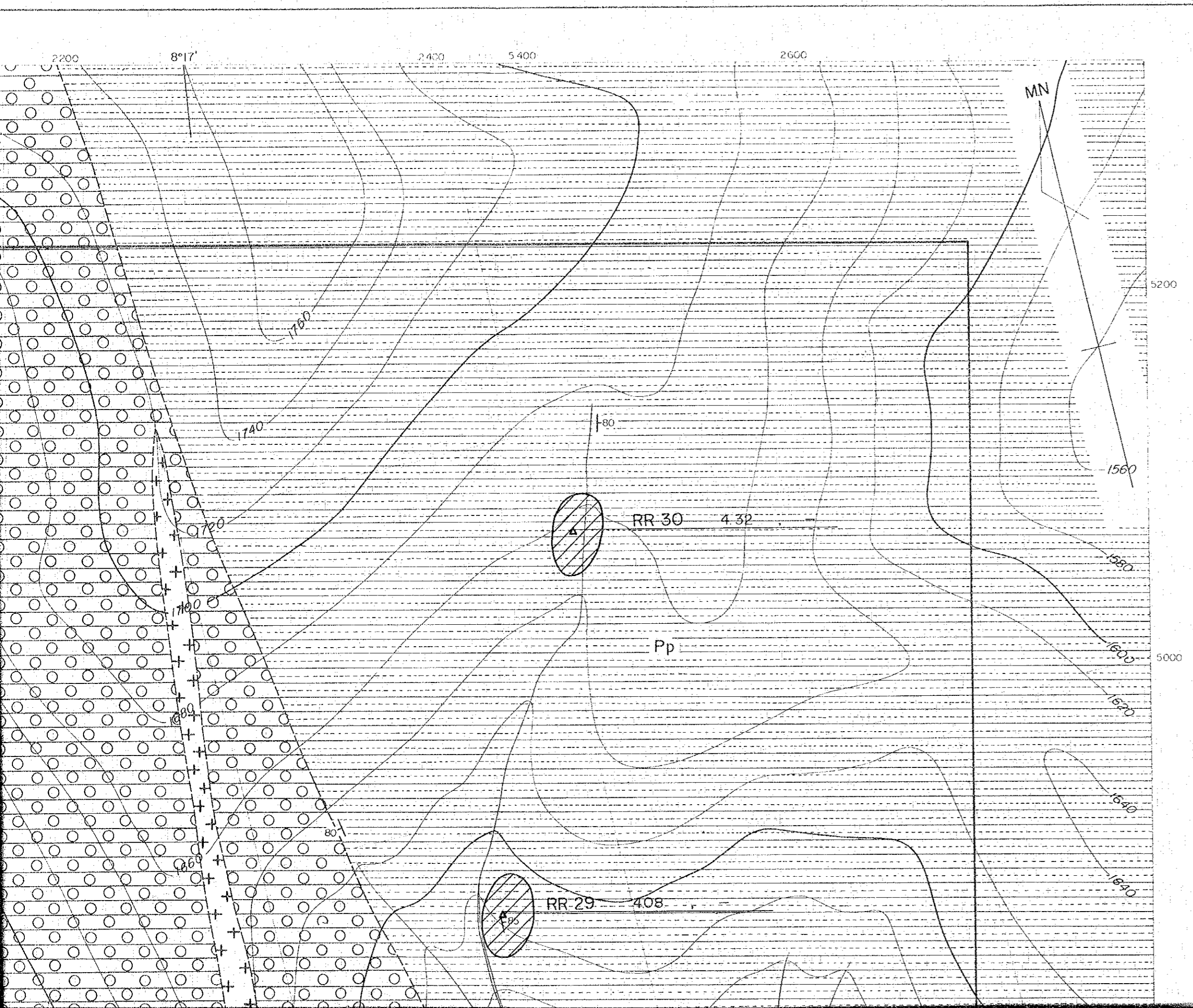


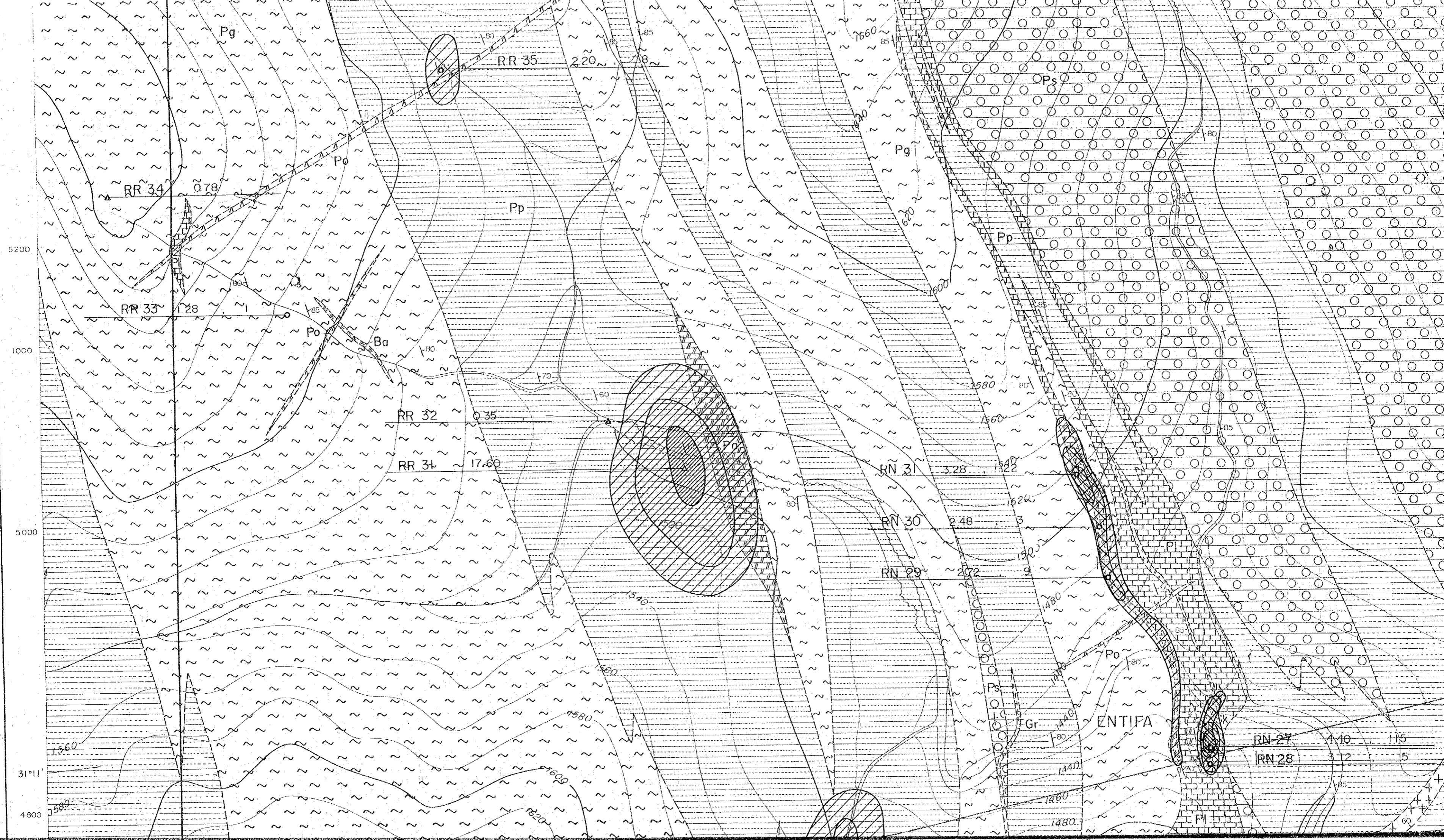
JAPAN INTERNATIONAL COOPERATION AGENCY
METAL MINING AGENCY OF JAPAN

JANUARY 1984

Prepared by MINDECO

Scale 1 : 2,000



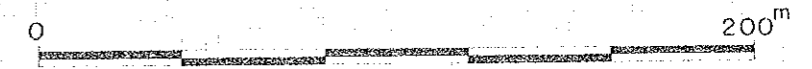




JANUARY 1984

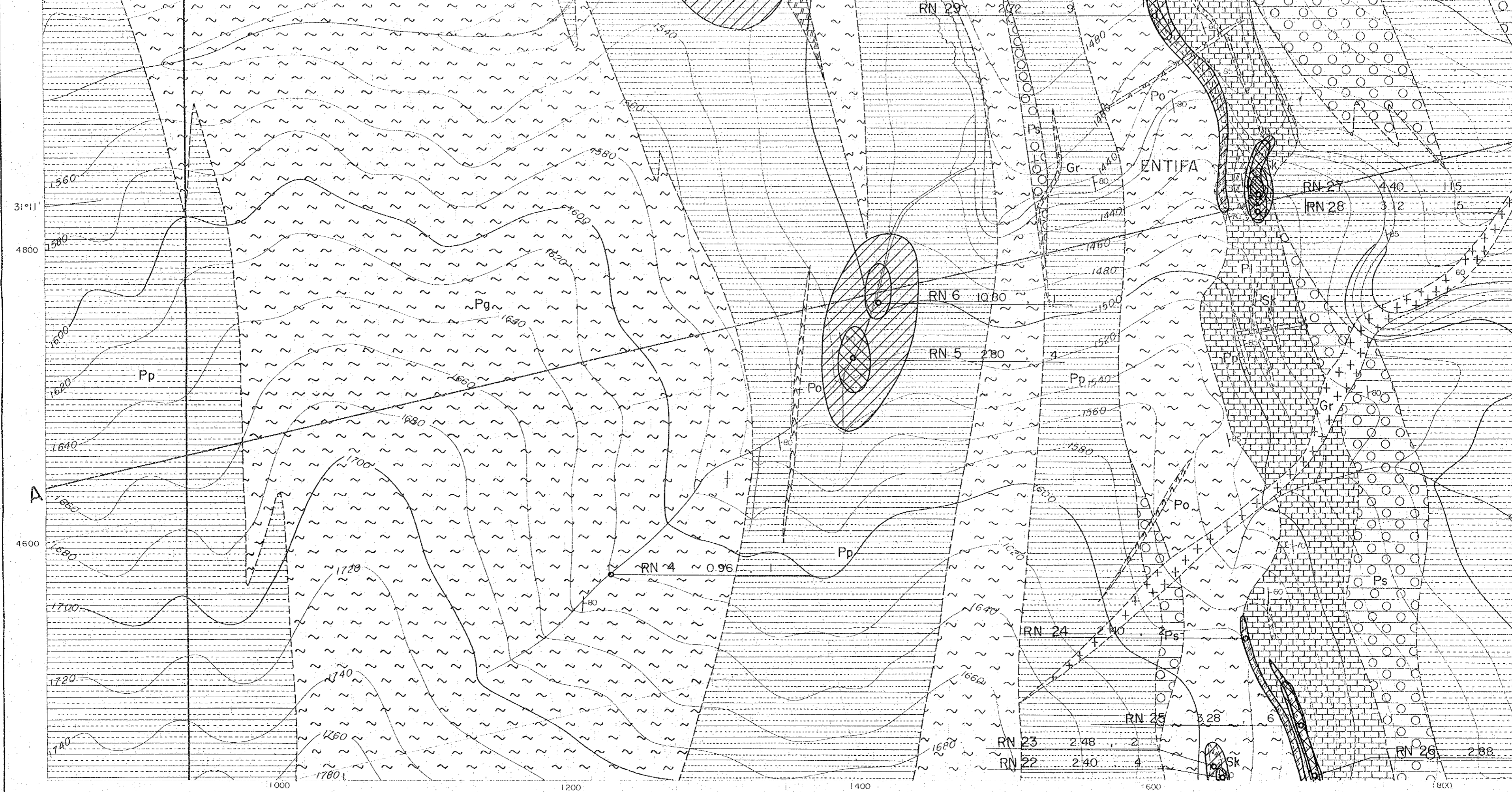
Prepared by MINDECO

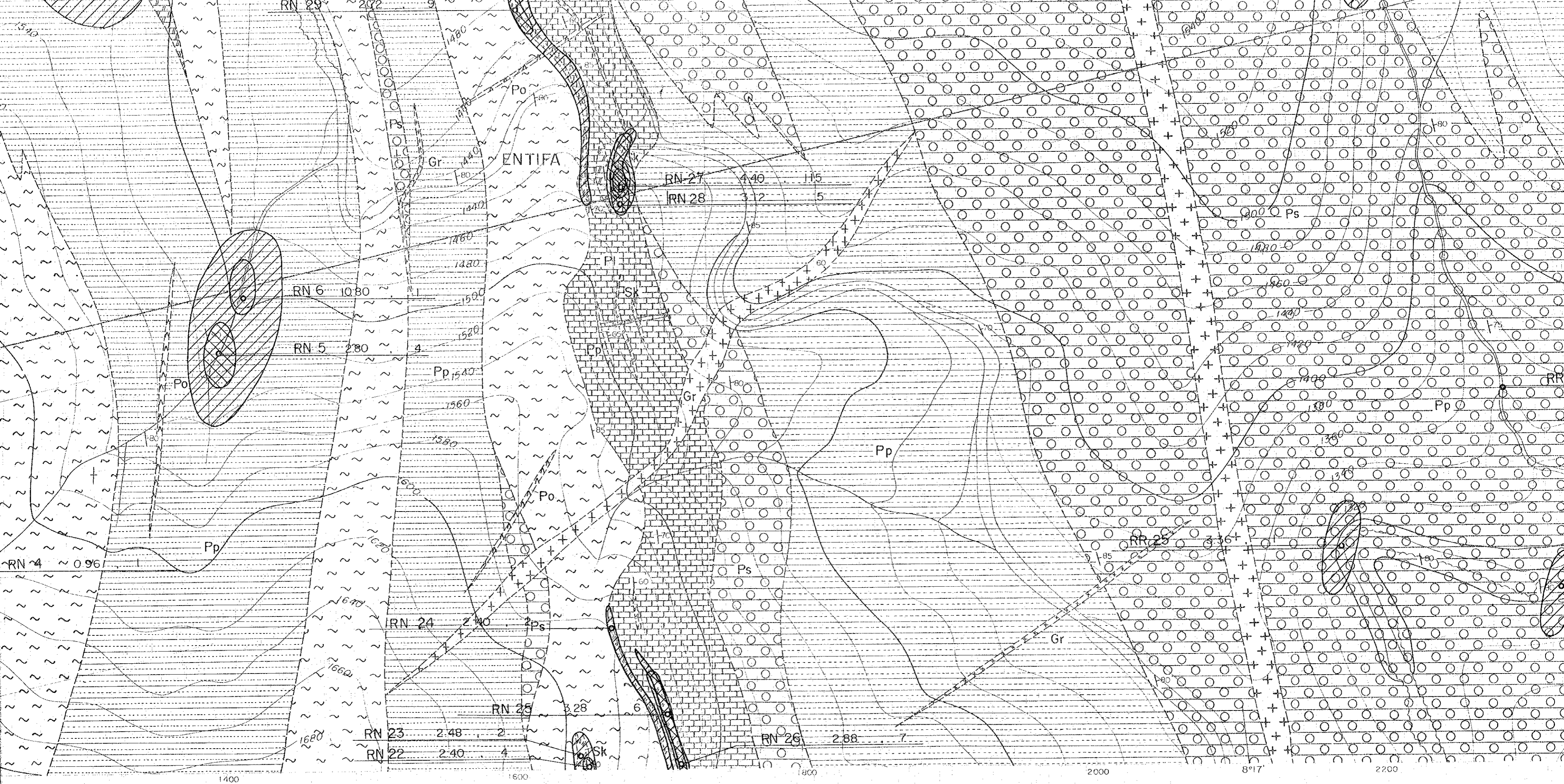
Scale 1:2,000



LEGEND

- | | | |
|----------------|--|--|
| Quaternary | | Q sand, gravel, travertine |
| | | Ks sandstone, siltstone, limestone, dolomite |
| Cretaceous | | Kc conglomerate |
| | | Pp pelitic schist |
| | | Ps spotted schist |
| Cambrian | | Pg gneissose schist |
| | | Pa calcareous schist |
| | | Pl limestone |
| | | Gr granite |
| Intrusive rock | | Po porphyrite |
| | | Ba basalt, amphibolite, lamprophyre |
| | | Sk skarn (garnet, hedenbergite, epidote, wollastonite) |
| | | vein (q... quartz, h... hematite) |





ENTIFA

RN 6 10.80

RN 5 2.80

RN 4 0.96

RN 24 2.40

RN 23 2.48

RN 22 2.40

RN 25 3.28

RN 27 4.40

RN 28 3.2

RN 26 2.88

RR 25 3.36

1400

1600

1800

2000

8°17'

2200

