

JANUARY 1984

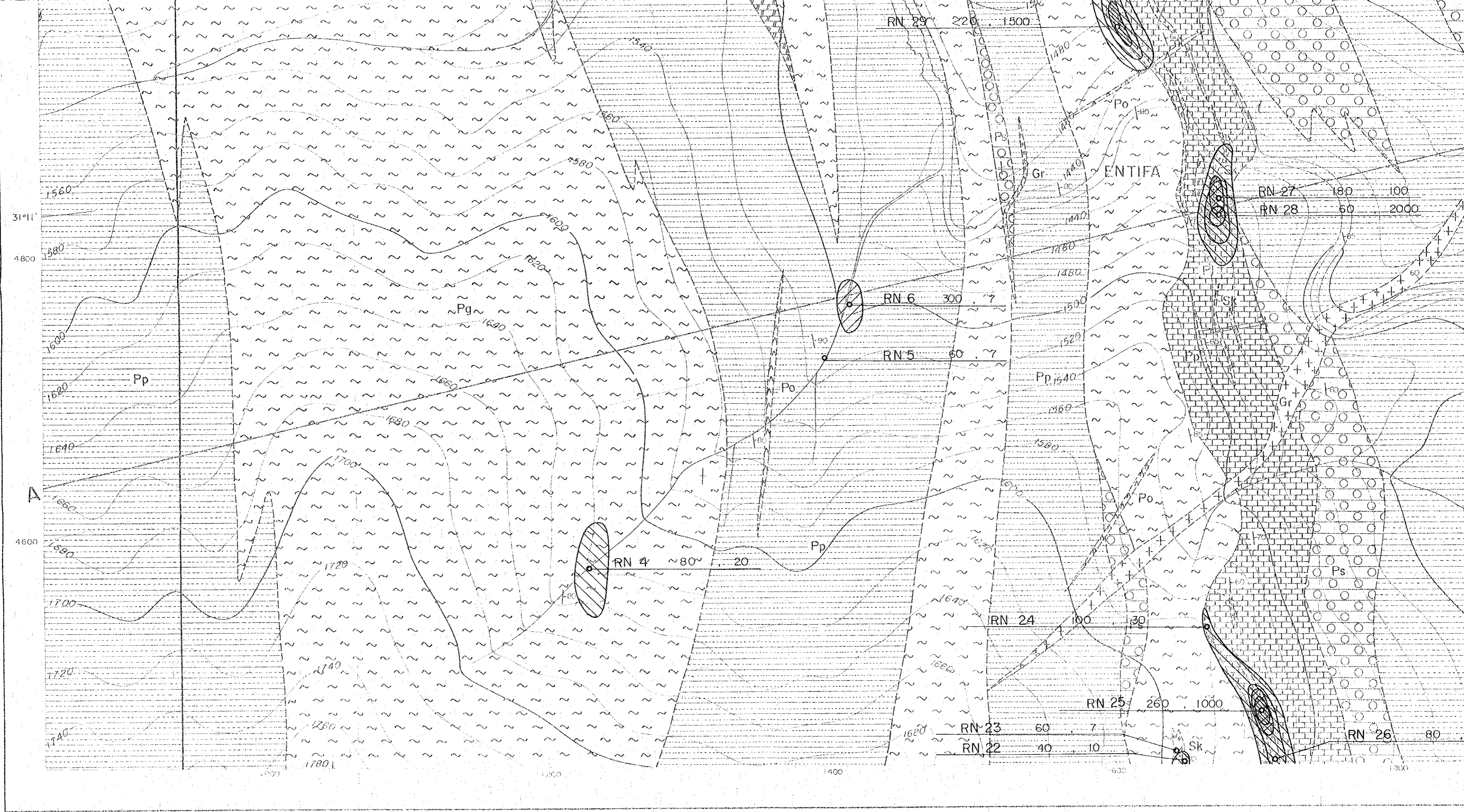
Prepared by MINDECO

Scale 1 : 2,000



LEGEND

- |                |  |  |
|----------------|--|--|
| Quaternary     |  | Q sand, gravel, travertine                             |
| Cretaceous     |  | Ks sandstone, siltstone, limestone, dolomite           |
|                |  | Kc conglomerate  |
|                |  | Pp pelitic schist                                      |
| Cambrian       |  | Ps spotted schist                                      |
|                |  | Pg gneissose schist                                    |
|                |  | Pa calcareous schist                                   |
|                |  | Pl limestone   |
|                |  | Gr granite   |
| Intrusive rock |  | Po porphyrite  |
|                |  | Ba basalt, amphibolite, lamprophyre                    |
|                |  | Sk skarn (garnet, hedenbergite, epidote, wollastonite) |
|                |  | vein (q: quartz, h: hematite)                          |







1400

1600

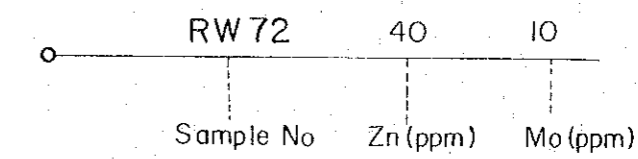
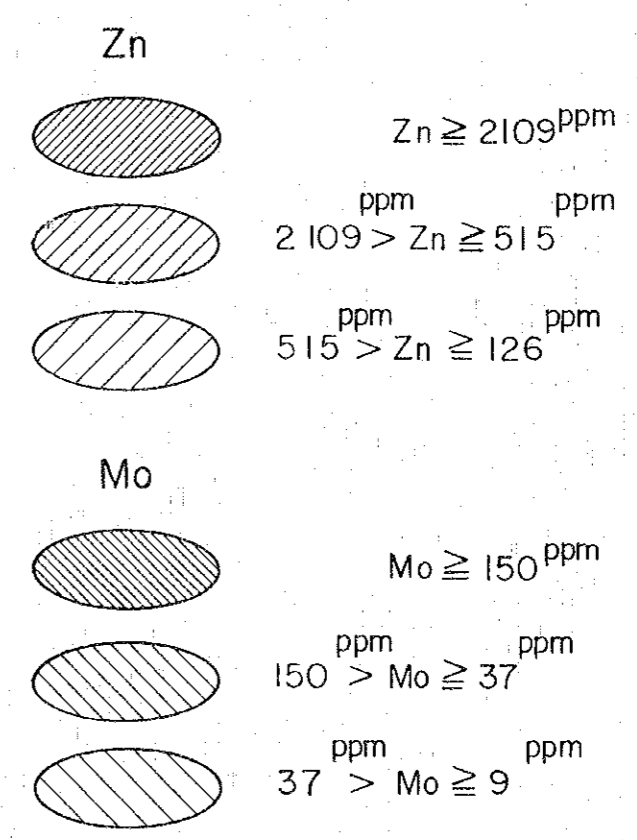
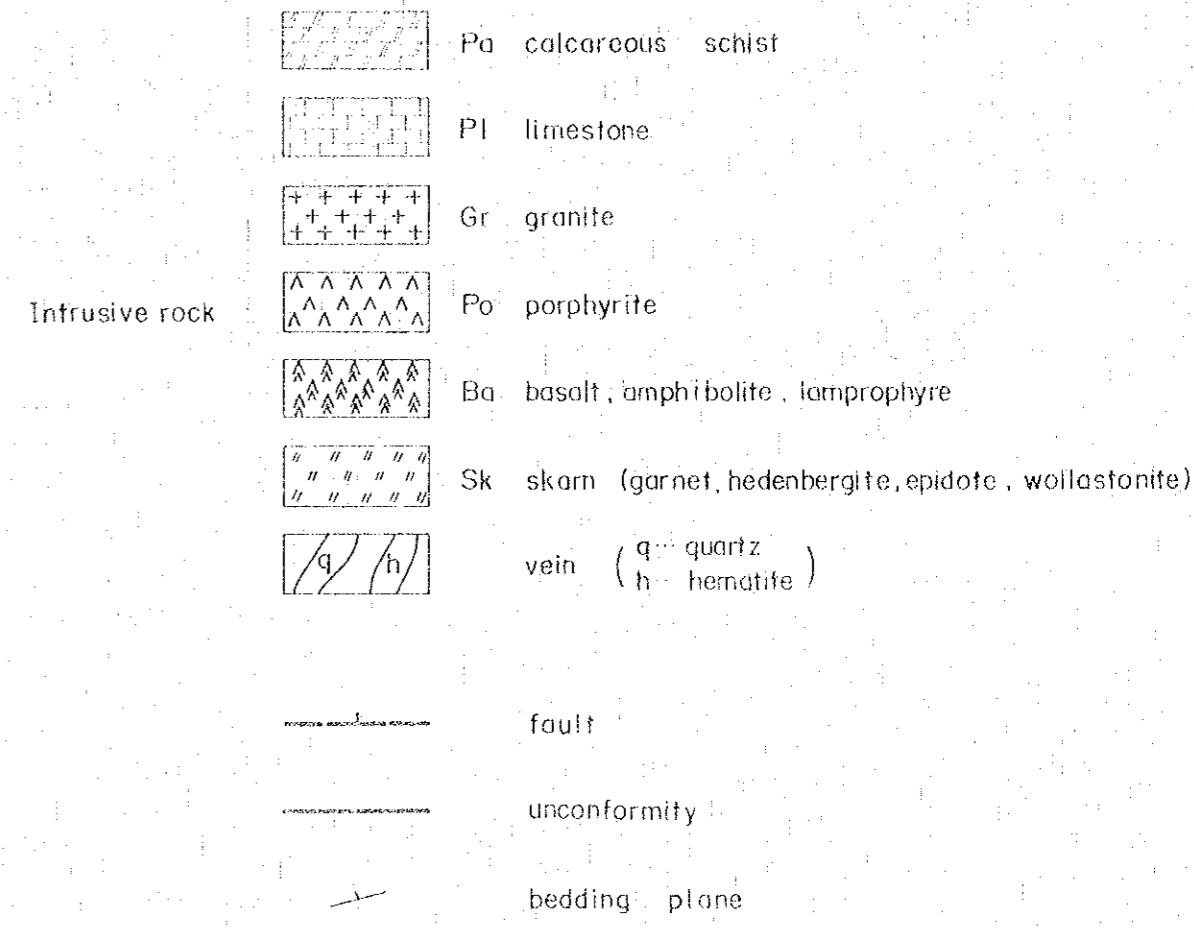
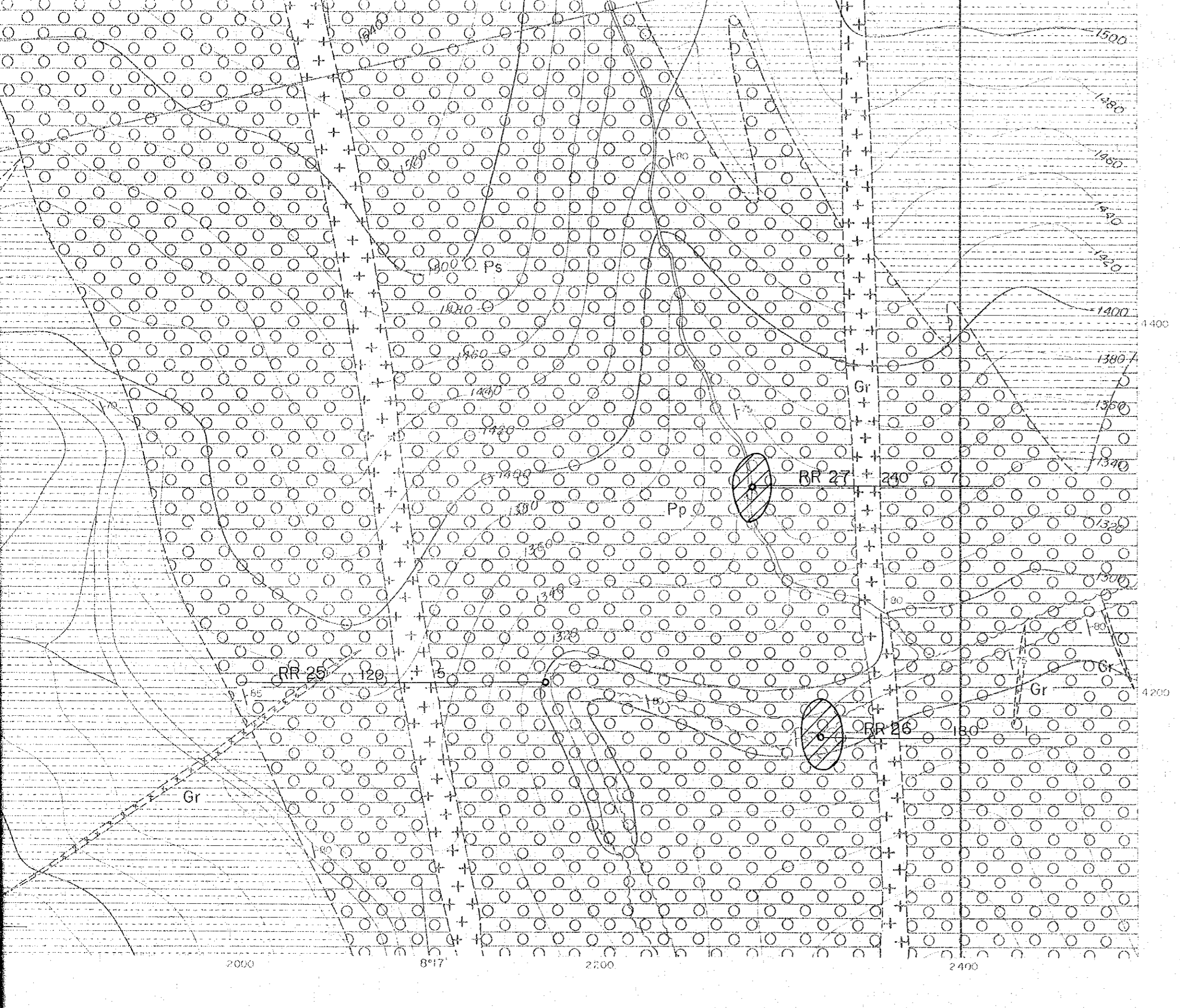
1800

2000

2200

2400

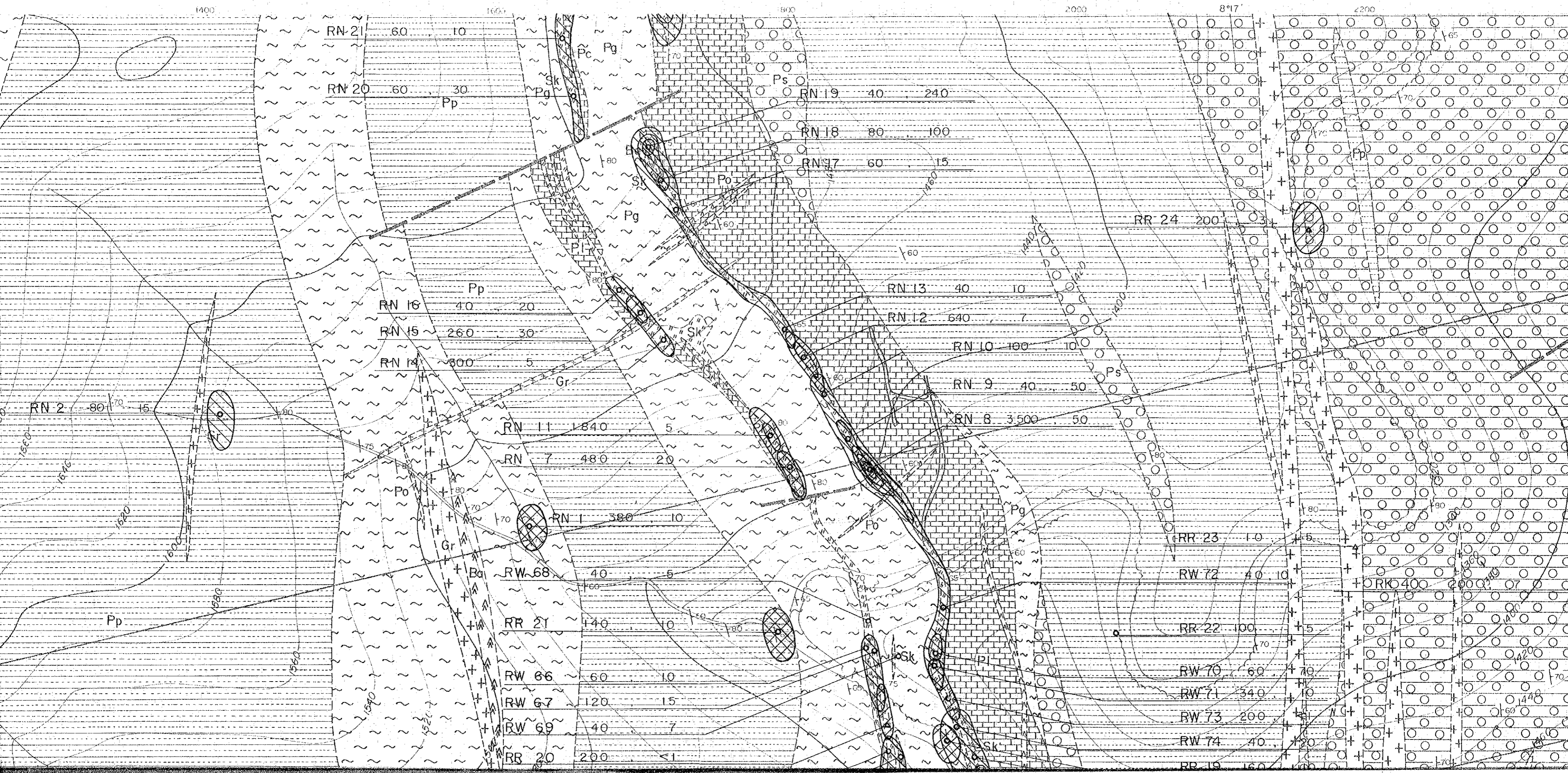
2600



△ Sample analysed by B. R. P. M.







1400

1600

1800

2000

2200

2400

RN 21 60 10  
RN 20 60 30  
Pp

RN 19 40 240  
RN 18 80 100  
RN 17 60 15

RN 16 40 20  
RN 15 260 30  
RN 14 300 5

RN 13 40 10  
RN 12 640 7  
RN 10 100 10

RN 2 80 15

RN 11 1840 5

RN 9 40 50

RN 7 480 20

RN 8 3500 50

RN 1 380 10

RW 68 40 5

RR 23 10

RW 72 40 10

RR 21 40 10

RR 22 100

RW 66 60 10

RW 70 60 70

RW 67 120 15

RW 71 340 10

RW 69 40 7

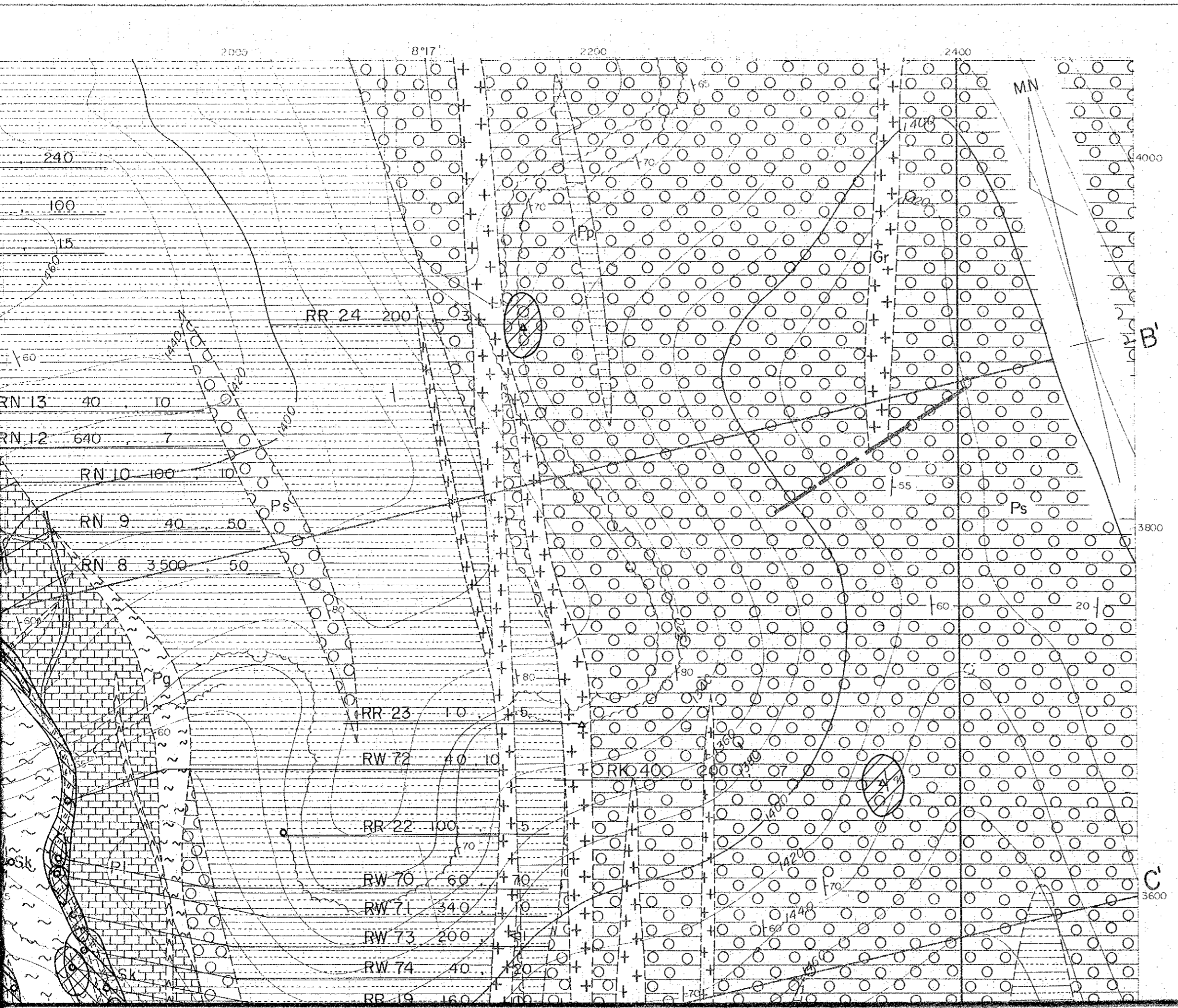
RW 73 200 15

RR 20 200 <1

RW 74 40 20

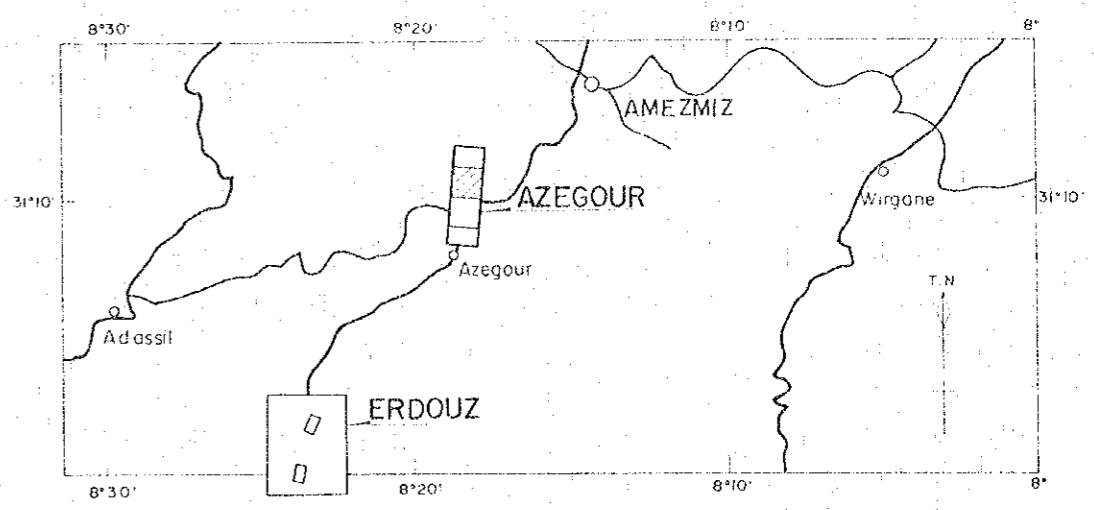
RR 19 160





国際協力事業団  
11636  
図書資料室蔵書

GEOLOGICAL SURVEY  
OF  
HAUT ATLAS OCCIDENTAL AREA, MOROCCO  
( PHASE I )  
  
GEOCHEMICAL MAP FOR Zn AND Mo  
IN AZEGOUR SECTOR



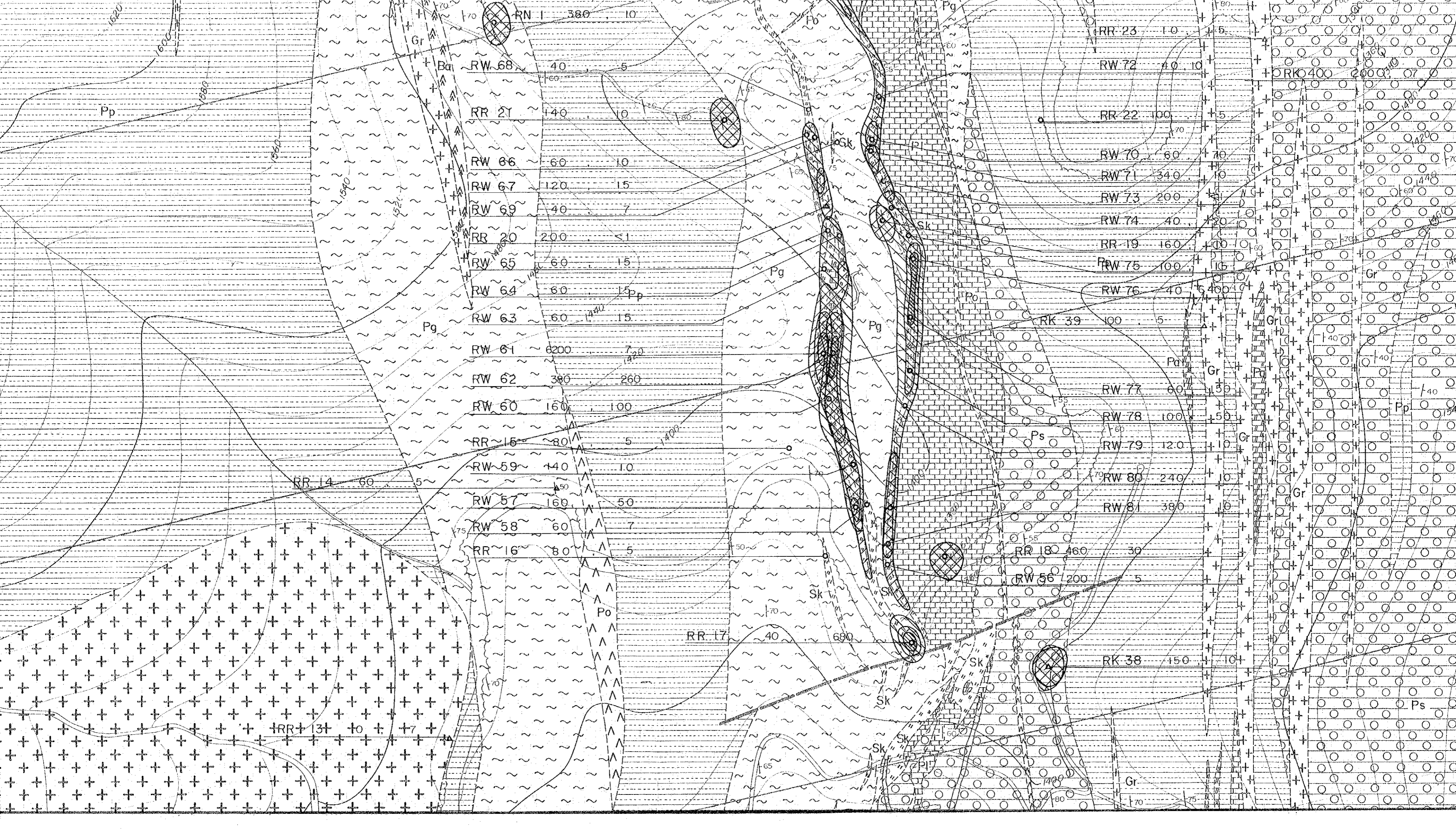
JAPAN INTERNATIONAL COOPERATION AGENCY  
METAL MINING AGENCY OF JAPAN  
JANUARY 1984  
Prepared by MINDECO

Scale 1 : 2,000





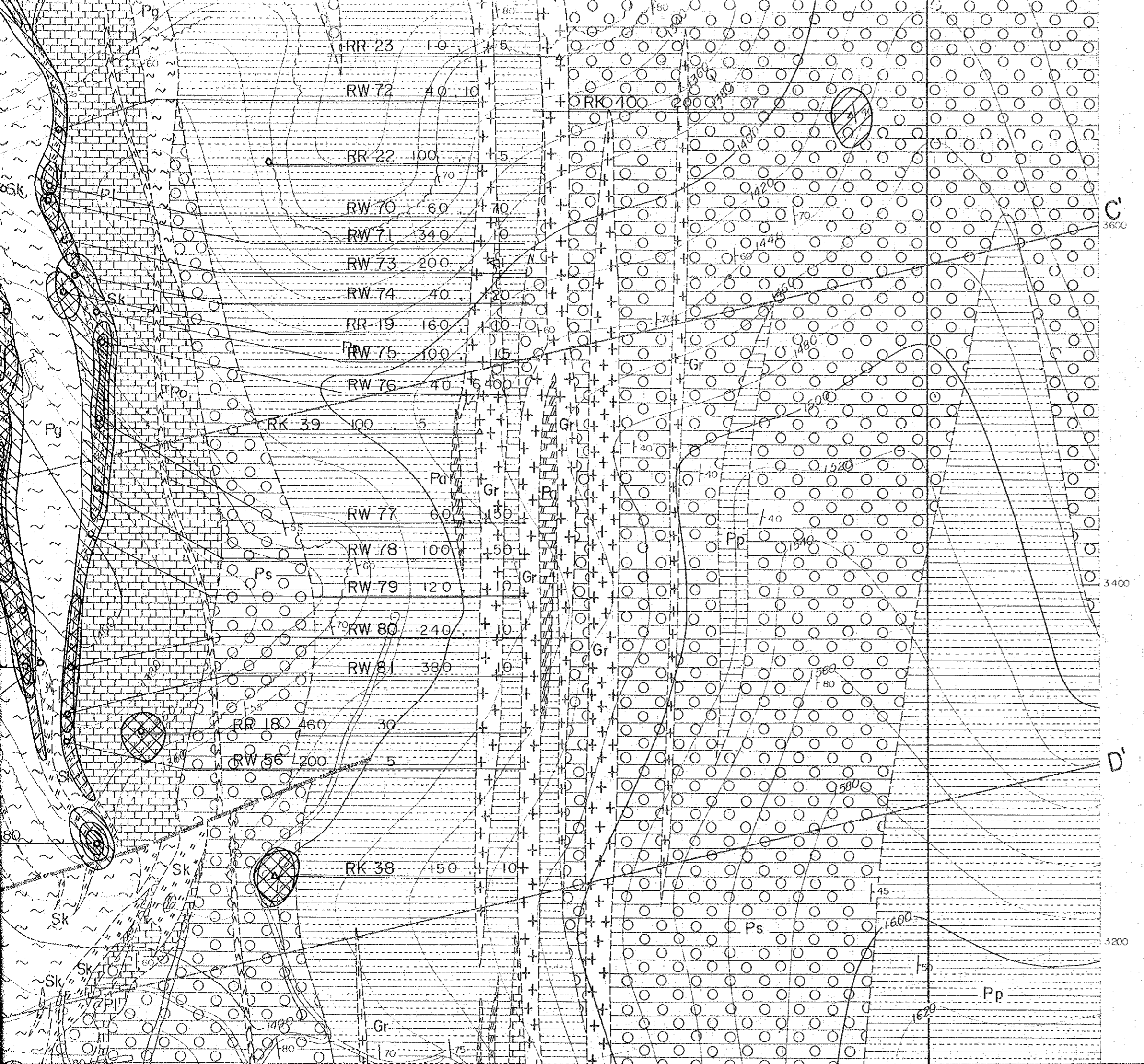




JANUARY 1984

Prepared by MINDECO

Scale 1 : 2,000



LEGEND

Quaternary		Q sand, gravel, travertine
		Ks sandstone, siltstone, limestone, dolomite
Cretaceous		Kc conglomerate
		Pp pelitic schist
		Ps spotted schist
Cambrian		Pg gneissose schist
		Pa calcareous schist
		Pl limestone
		Gr granite
Intrusive rock		Po porphyrite
		Ba basalt, amphibolite, lamprophyre
		Sk skarn (garnet, hedenbergite, epidote, wollastonite)
		vein (q: quartz, h: hematite)