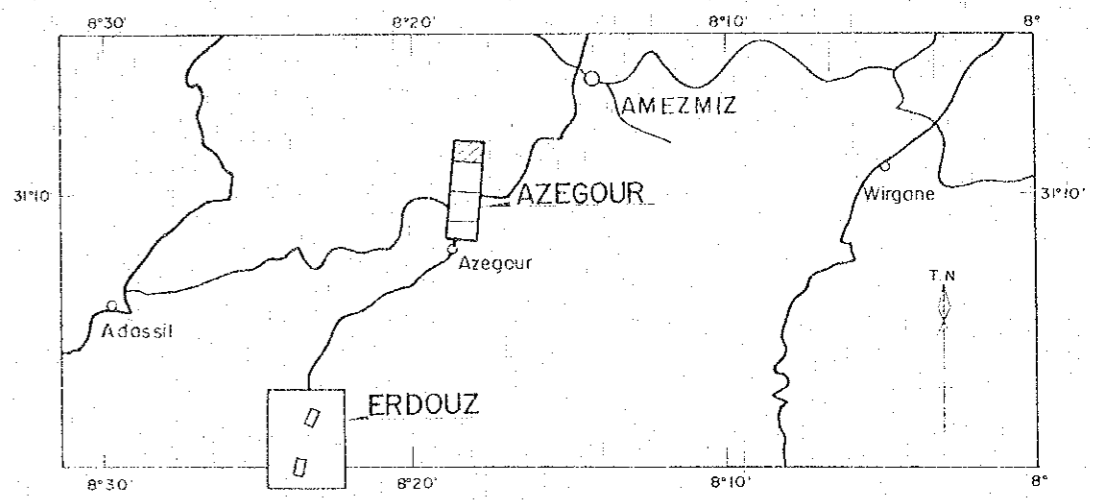


国際協力事業団
11636
図書資料室蔵書

PL.9-1-1

GEOLOGICAL SURVEY
OF
HAUT ATLAS OCCIDENTAL AREA, MOROCCO
(PHASE I)

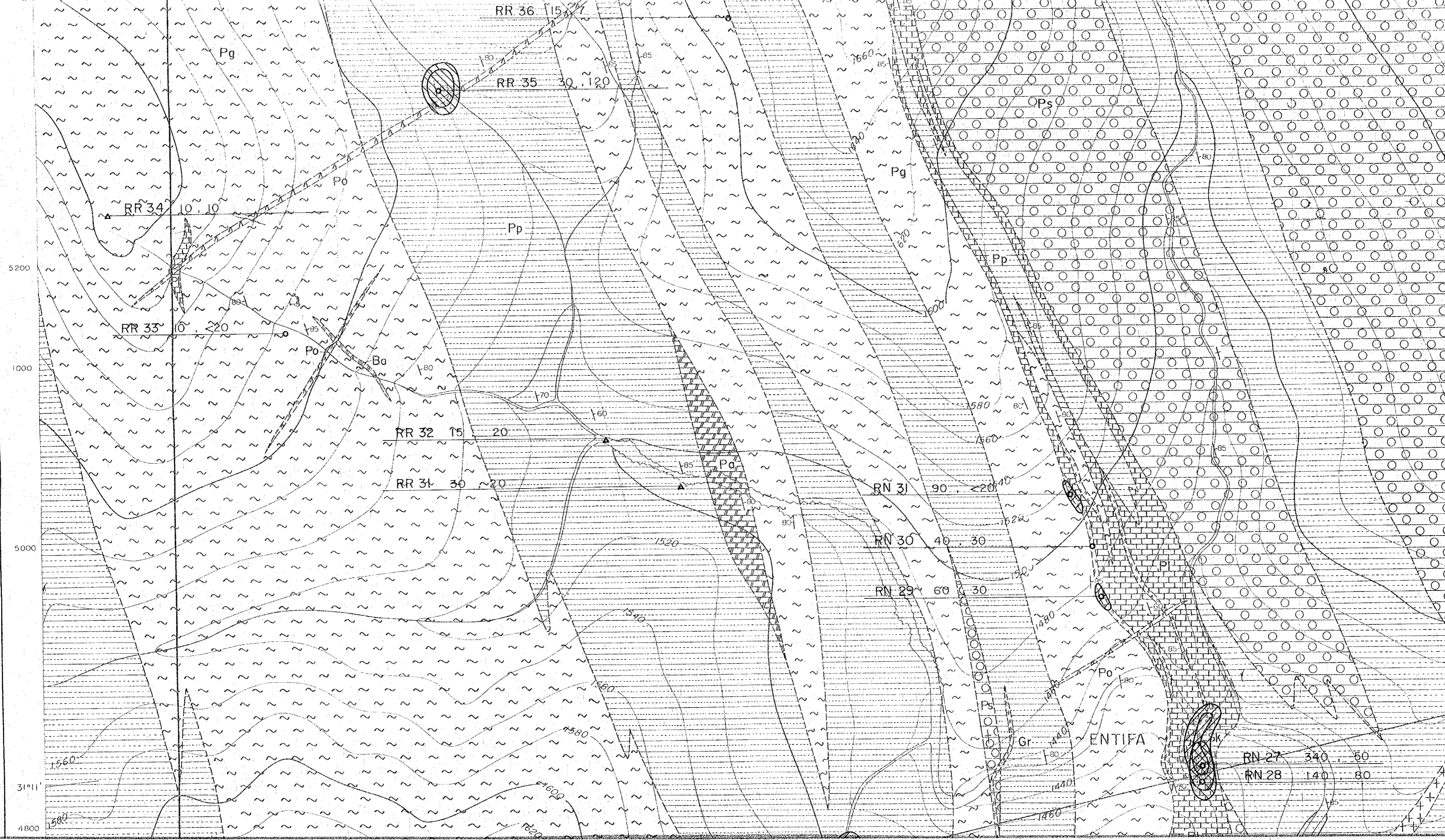
GEOCHEMICAL MAP FOR Cu AND Pb
IN AZEGOUR SECTOR

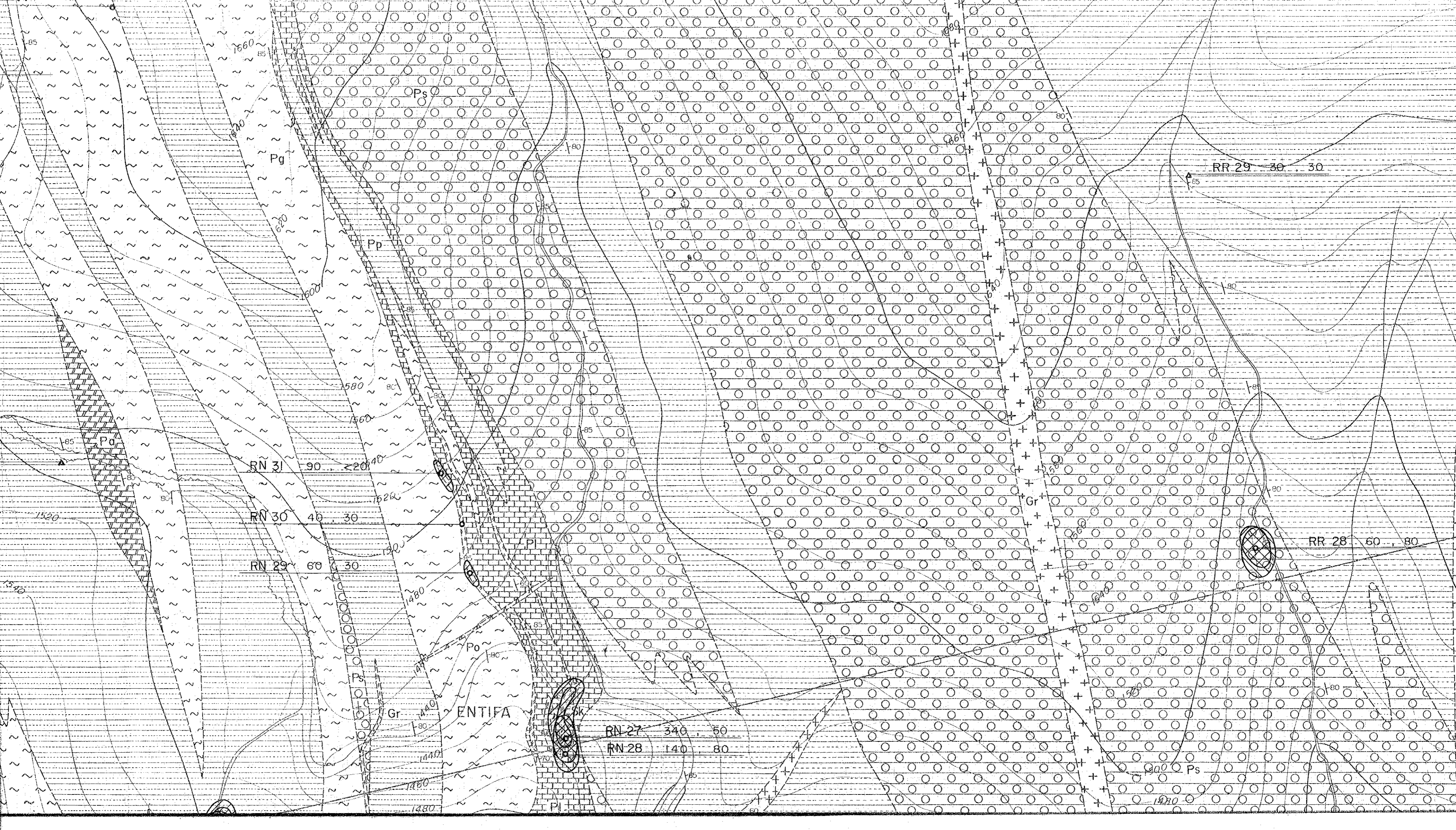


JAPAN INTERNATIONAL COOPERATION AGENCY
METAL MINING AGENCY OF JAPAN
JANUARY 1984
Prepared by MINDECO

Scale 1:2,000







85

1660

Ps

Pg

Pp

Pc

RN 31

RN 30

RN 29

ENTIFA

RN 27 340 50
RN 28 140 80

RR 29 30 30

RR 28 60 80

Ps

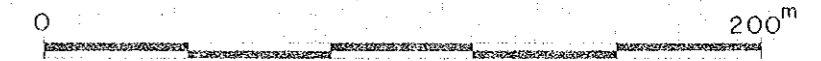
JAPAN INTERNATIONAL COOPERATION AGENCY

METAL MINING AGENCY OF JAPAN

JANUARY 1984

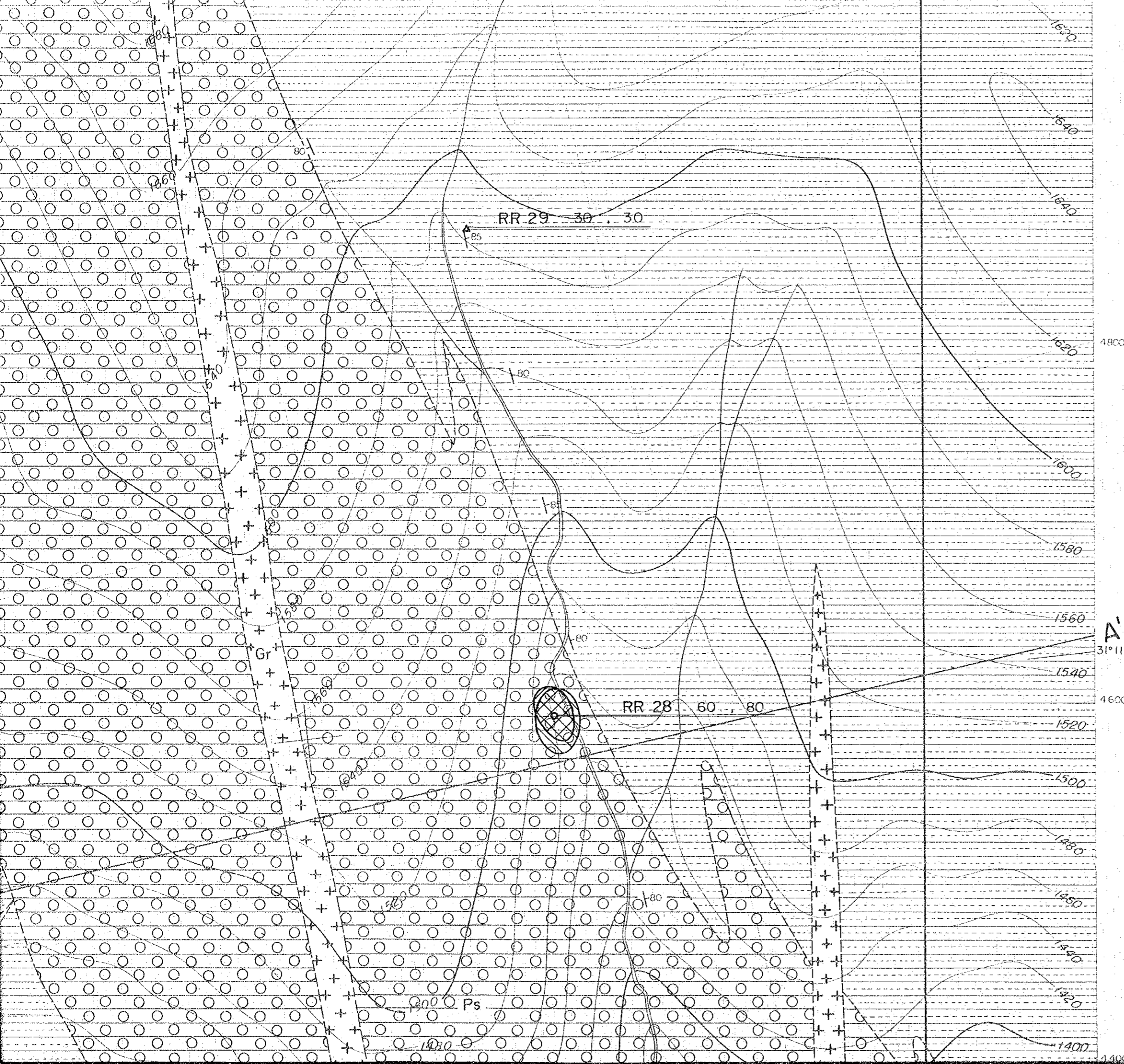
Prepared by MINDECO

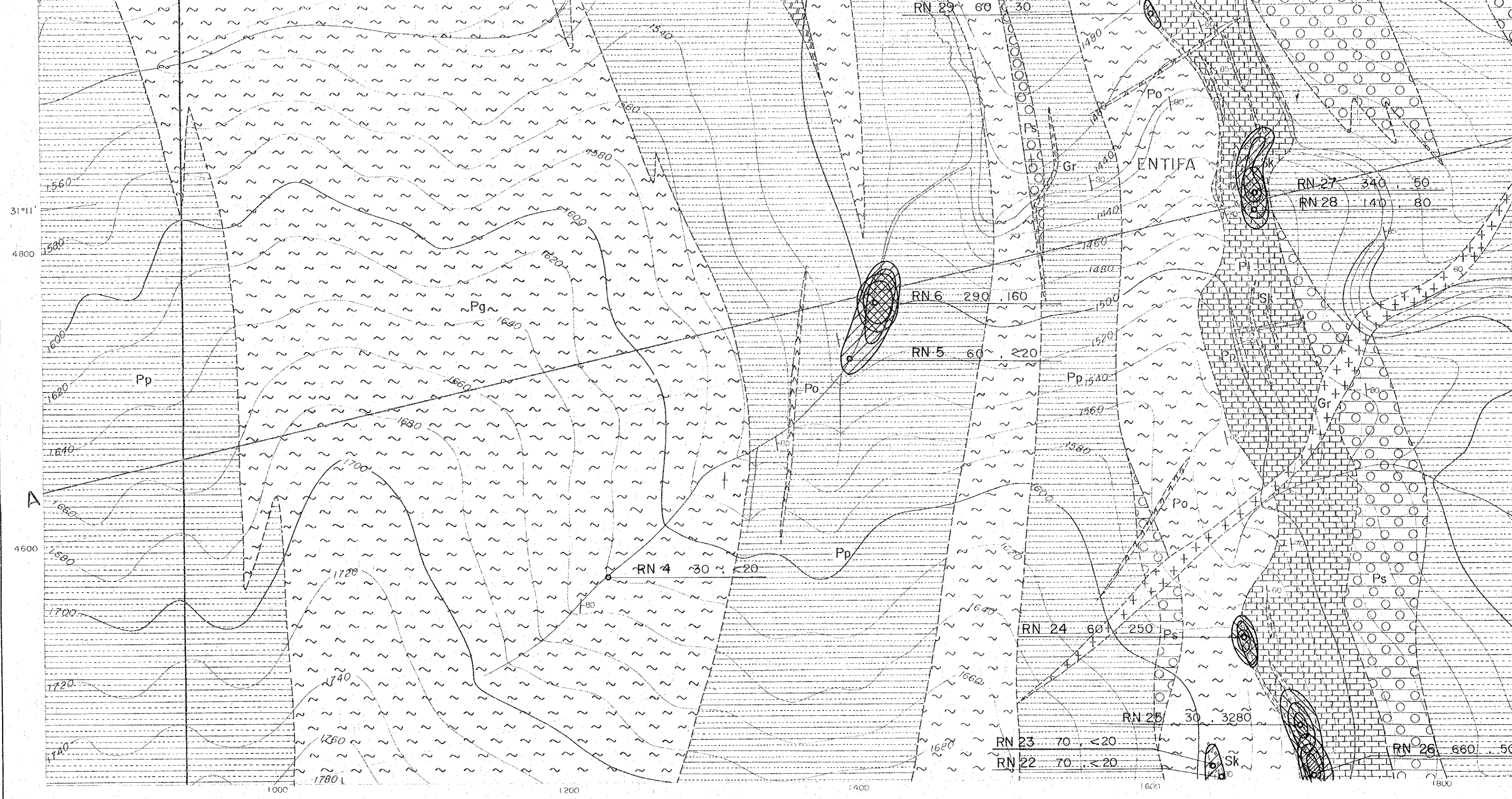
Scale 1 : 2,000



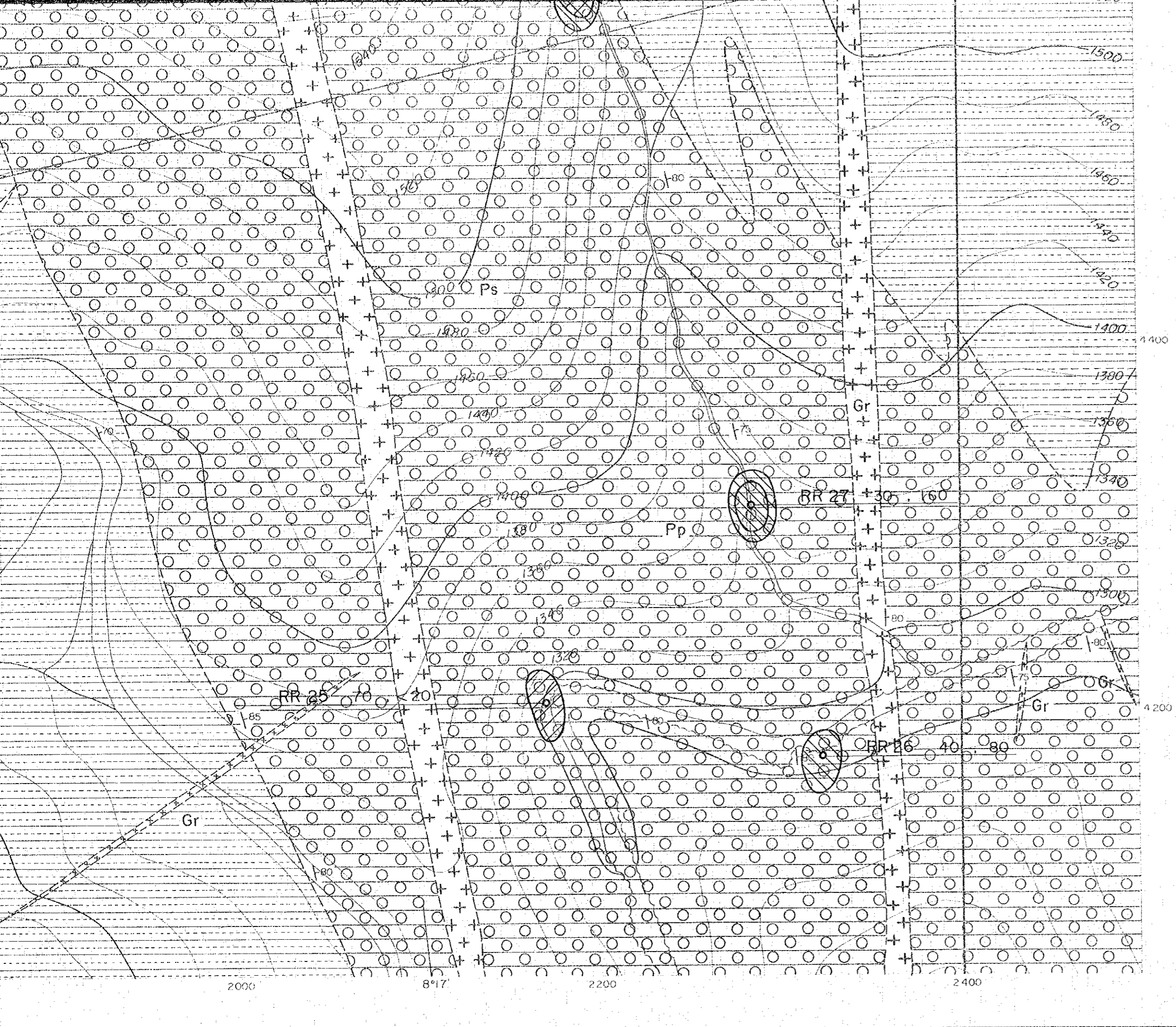
LEGEND

Quaternary		Q	sand, gravel, travertine
Cretaceous		Ks	sandstone, siltstone, limestone, dolomite
		Kc	conglomerate
		Pp	pelitic schist
		Ps	spotted schist
Cambrian		Pg	gneissose schist
		Pa	calcareous schist
		Pl	limestone
		Gr	granite
	Intrusive rock		Po
		Ba	basalt, amphibolite, lamprophyre
		Sk	skarn (garnet, hedenbergite, epidote, wollastonite)
		vein	(q... quartz h... hematite)







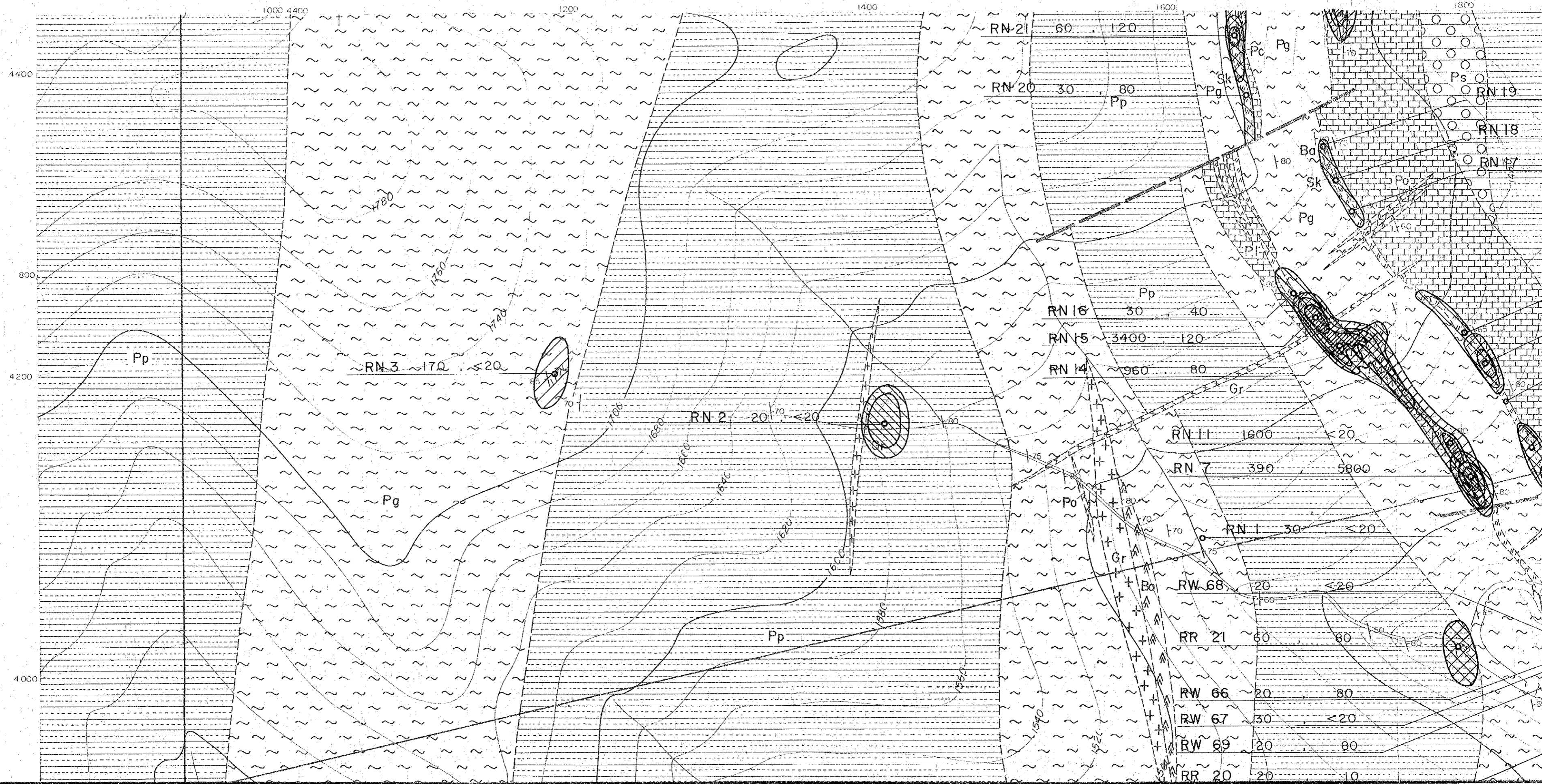


- Intrusive rock
- Pa calcareous schist
 - Pl limestone
 - Gr granite
 - Po porphyrite
 - Ba basalt, amphibolite, lamprophyre
 - Sk skarn (garnet, hedenbergite, epidote, wollastonite)
 - vein (q... quartz, h... hematite)
 - fault
 - unconformity
 - bedding plane

- Cu
- $Cu \geq 604 \text{ ppm}$
 - $604 > Cu \geq 175 \text{ ppm}$
 - $175 > Cu \geq 51 \text{ ppm}$
- Pb
- $Pb \geq 347 \text{ ppm}$
 - $347 > Pb \geq 112 \text{ ppm}$
 - $112 > Pb \geq 36 \text{ ppm}$

Sample No	Cu (ppm)	Pb (ppm)
RW 72	20	80

▲ Sample analysed by B. R. P. M.



4400

800

4200

4000

1000 1400

1200

1400

1600

1800

RN 21 60 120

RN 20 30 80

RN 16 30 40

RN 15 3400 120

RN 14 960 80

RN 11 1600 <20

RN 7 390 5800

RN 1 30 <20

RW 68 20 <20

RR 21 60 80

RW 66 20 80

RW 67 30 <20

RW 69 20 80

RR 20 20 10

RN 3 170 <20

RN 2 20 70 <20

Pp

Pg

Pp

Pp

Ba

Sk

Pg

Pp

Gr

Pp

Pp

Pp

Pp

Pp

Pp

Pp

Pp

Pp

Pp

Ps

Ps

Ps

Ps

Ps

Ps

Ps

Ps

Ps

Ps

Ps

Ps

Ps

Ps

Ps

Ps

Ps

Ps

Ps

Ps

Ps

Ps

Ps

Ps

Ps

Ps

Ps

Ps

Ps

Ps

Ps

Ps

Ps

Ps