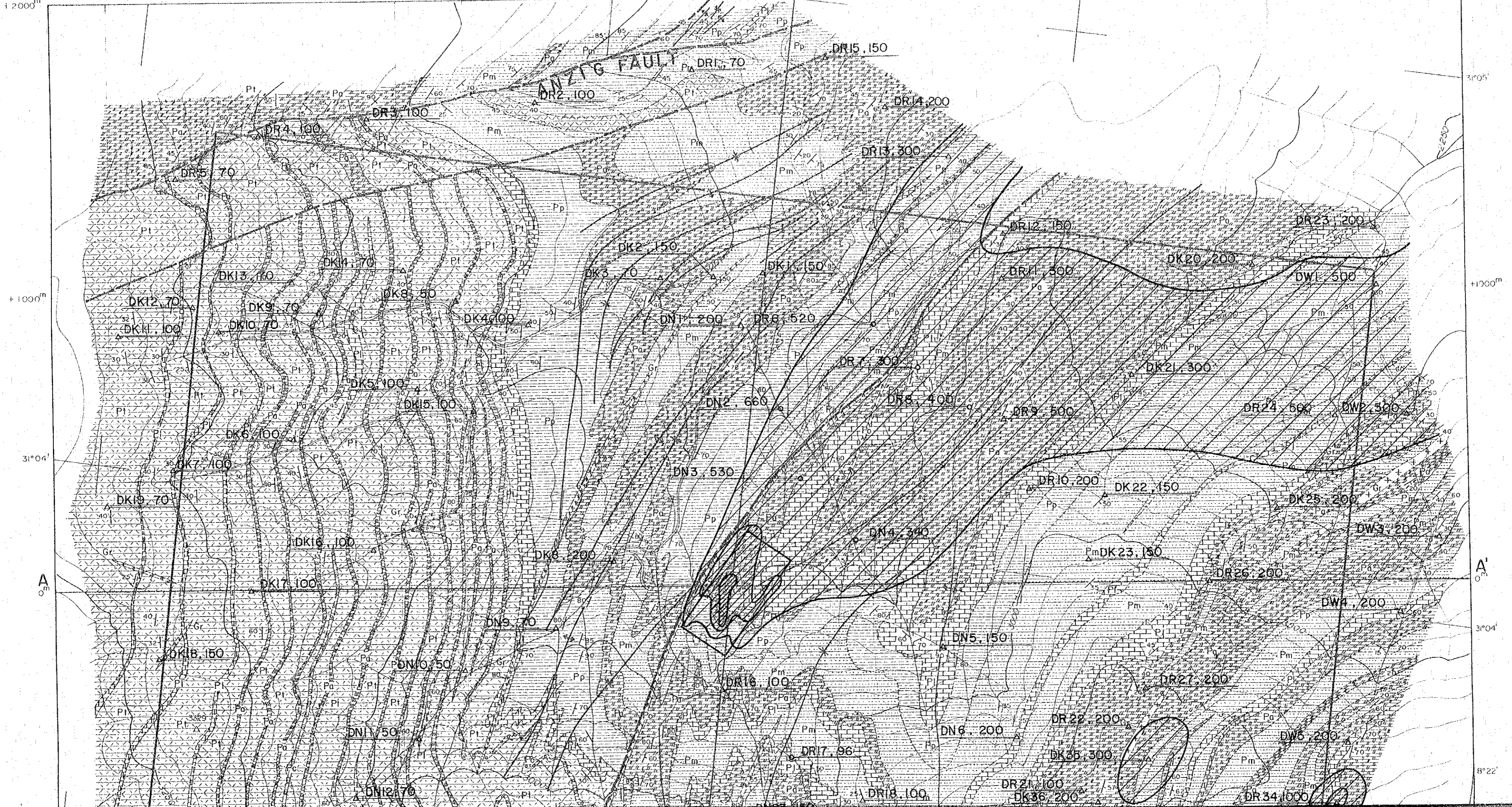
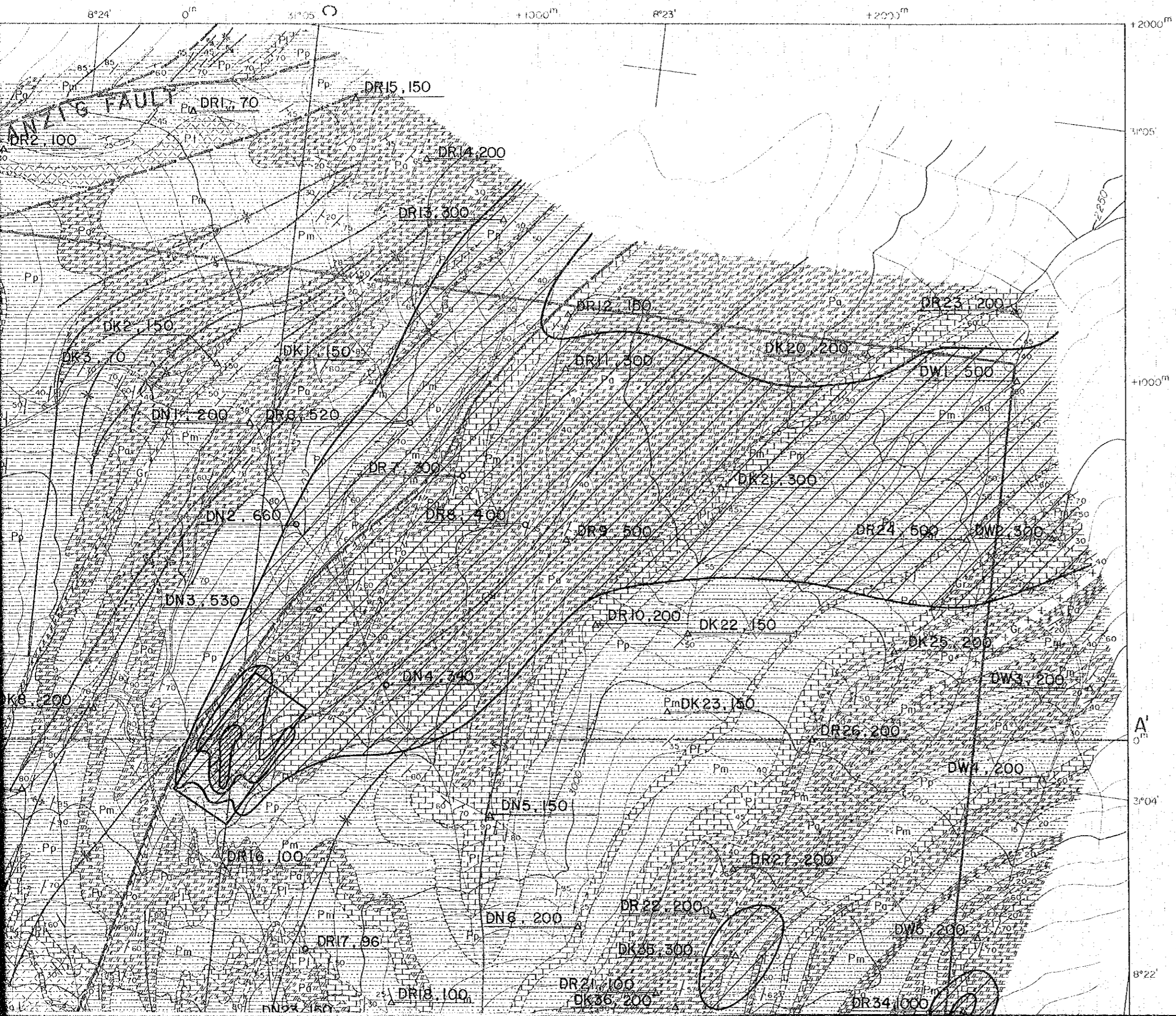


± 2000^m -2000^m 0^m +1000^m +2000^m

ANZIG FAULT

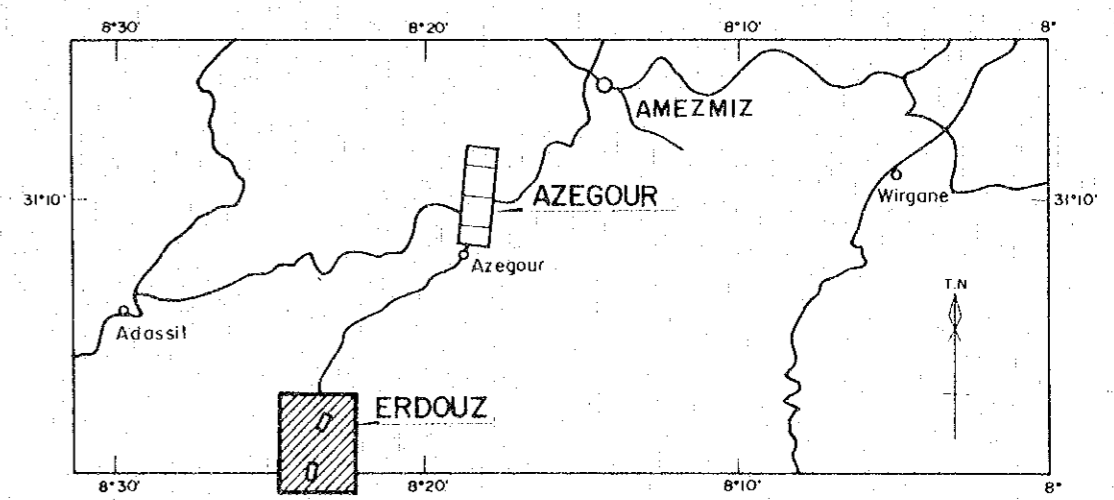




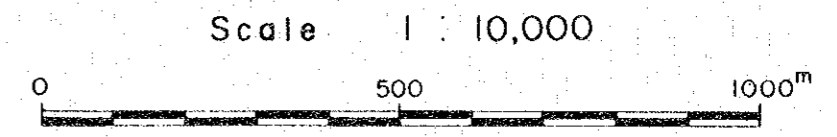
国際協力事業団
11636
図書資料室蔵書

GEOLOGICAL SURVEY
OF
HAUT ATLAS OCCIDENTAL AREA, MOROCCO
(PHASE I)

GEOCHEMICAL MAP FOR Zn
IN ERDOUZ SECTOR



JAPAN INTERNATIONAL COOPERATION AGENCY
METAL MINING AGENCY OF JAPAN
JANUARY 1984
Prepared by MINDECO

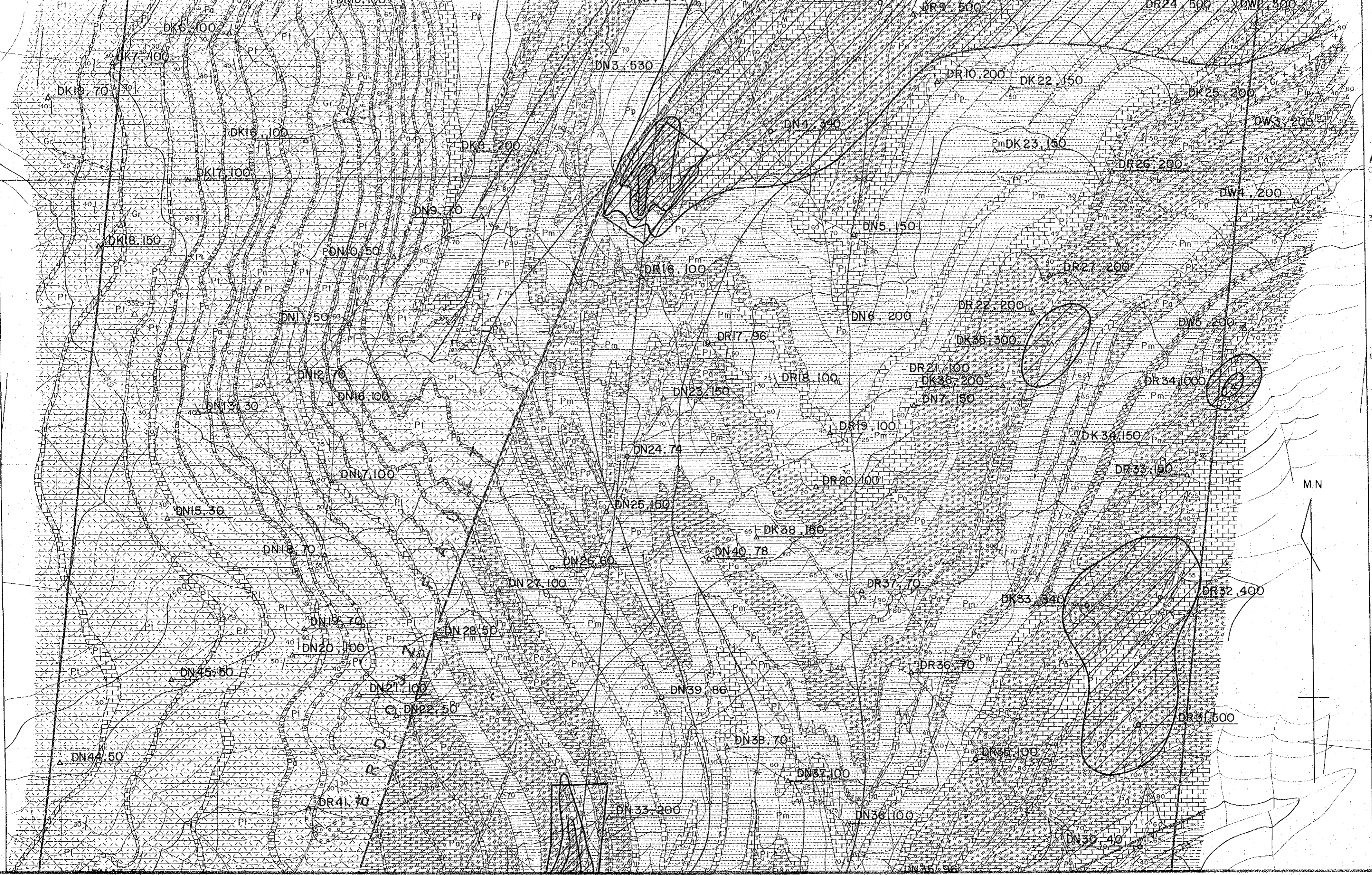


31°04'
A
0m

8°25'
-1000m

31°03'

-2000m



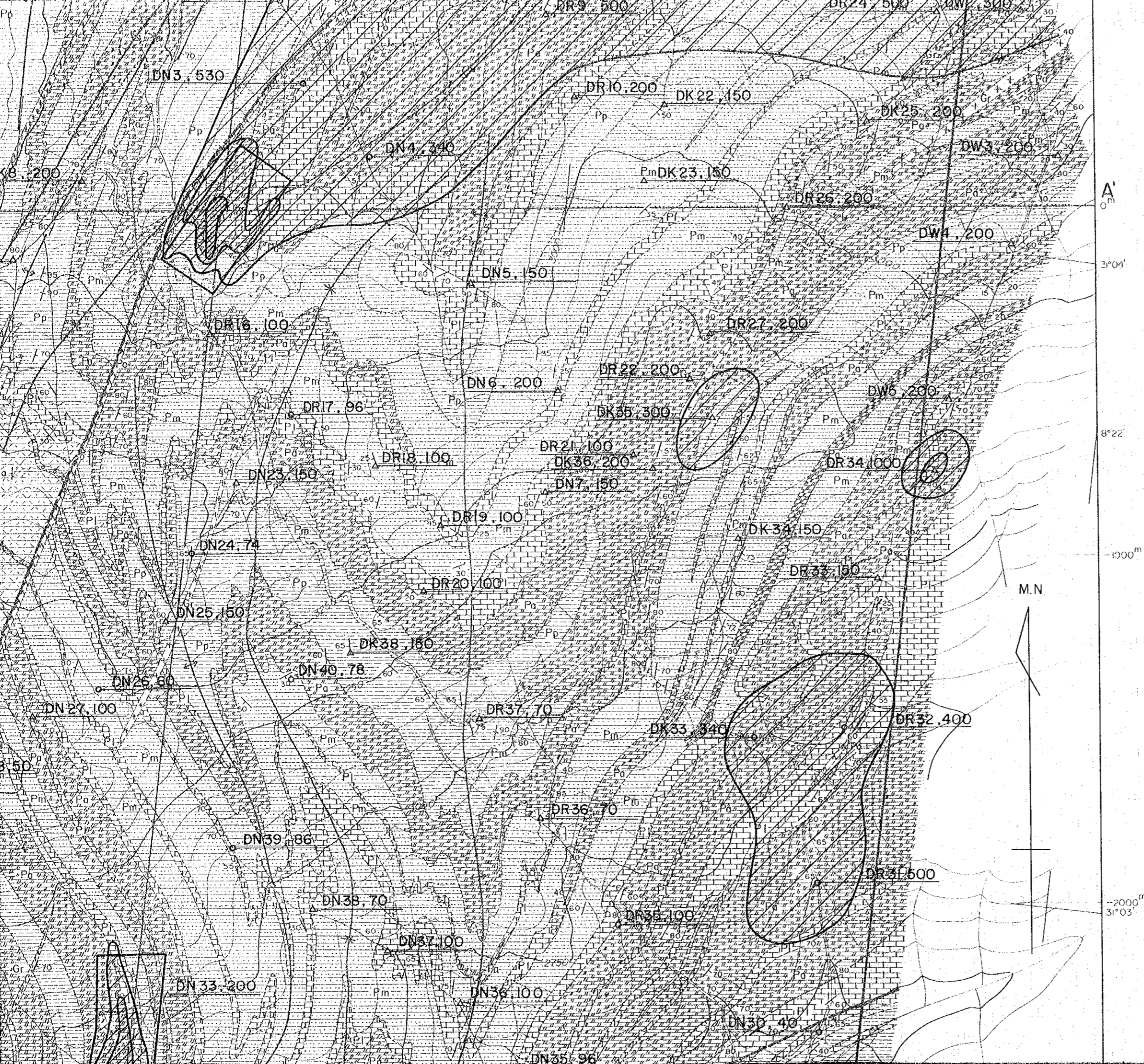
A
0m

8°22'

-1000m

-2000m
31°03'

M.N



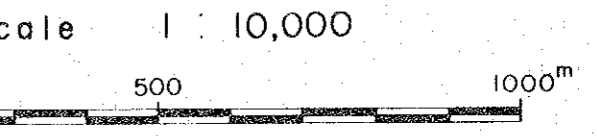
Adassil

ERDOUZ

JAPAN INTERNATIONAL COOPERATION AGENCY
METAL MINING AGENCY OF JAPAN

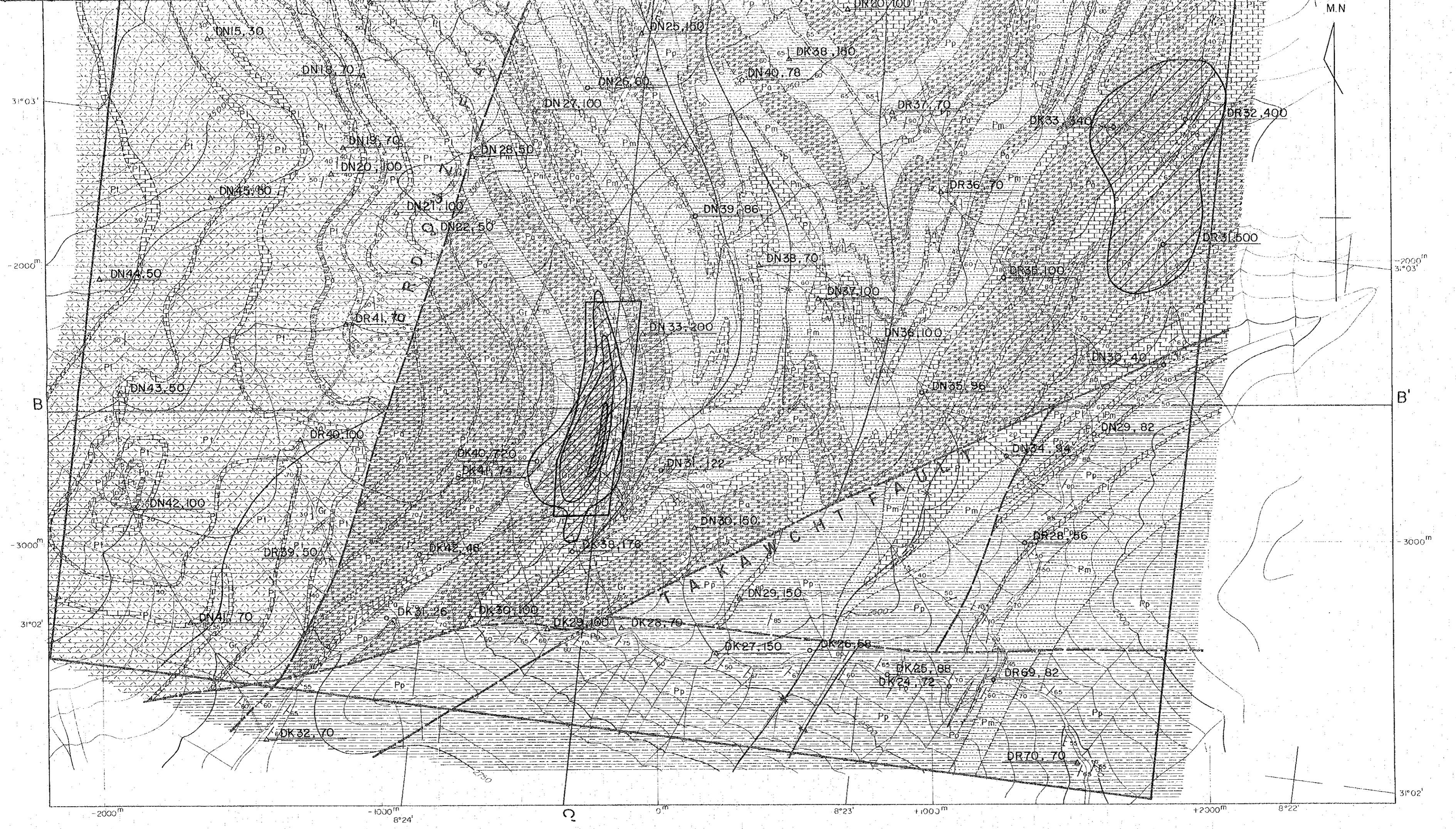
JANUARY 1984

Prepared by MINDECO



LEGEND

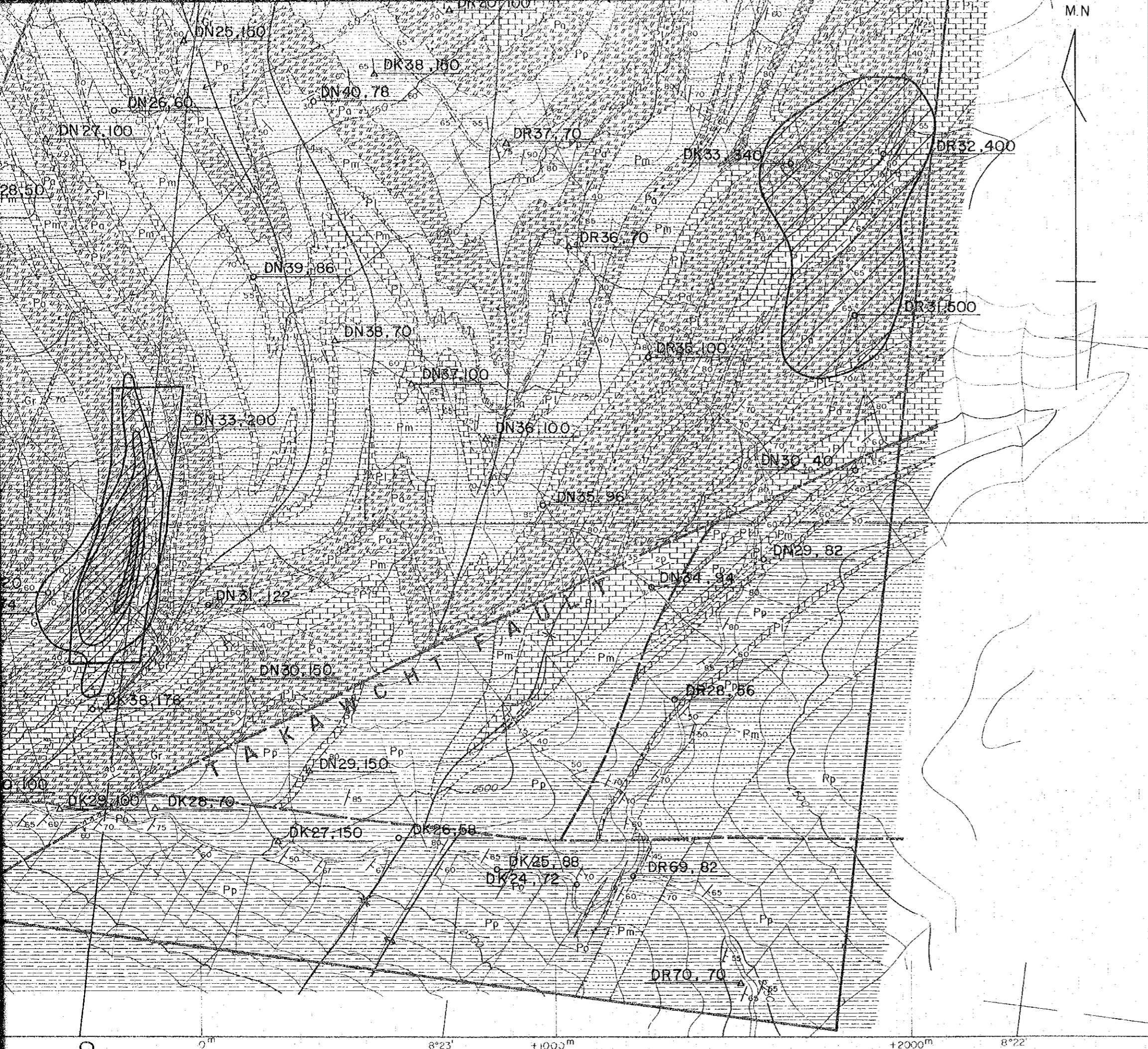
Cambrian		Pt green schist (tuff & tuff breccia)
		Pc conglomerate
		Pp pelitic schist
		Pm psammitic schist
		Pa calcareous schist
		Pl limestone
Intrusive rock		Gr granite
		Po porphyrite
		vein



31°03'
-2000m
B
-3000m
31°02'
-2000m
-1000m
0m
8°24'

M.N.
31°03'
-2000m
B'
3000m
31°02'
8°22'

DN15.30
DN18.70
DN19.70
DN20.100
DN21.100
DN22.50
DN25.150
DN26.60
DN27.100
DN28.50
DN29.100
DN31.22
DN33.200
DN35.96
DN36.100
DN37.100
DN38.70
DN39.86
DN40.78
DN41.70
DN42.100
DN43.50
DN44.50
DN45.80
DK32.70
DK33.15
DK34.100
DK35.100
DK36.100
DK37.100
DK38.150
DK39.100
DK40.720
DK41.74
DK42.48
DK43.100
DK44.100
DK45.100
DK27.150
DK28.70
DK29.100
DK30.100
DK31.100
DK32.100
DK33.100
DK34.100
DK35.100
DK36.100
DK37.100
DK38.100
DK39.100
DK40.100
DK41.100
DK42.100
DK43.100
DK44.100
DK45.100
DK25.88
DK26.58
DK27.100
DK28.100
DK29.100
DK30.100
DK31.100
DK32.100
DK33.100
DK34.100
DK35.100
DK36.100
DK37.100
DK38.100
DK39.100
DK40.100
DK41.100
DK42.100
DK43.100
DK44.100
DK45.100
DR32.400
DR33.340
DR34.100
DR35.100
DR36.70
DR37.70
DR38.100
DR39.100
DR40.100
DR41.100
DR42.100
DR43.100
DR44.100
DR45.100
DR28.86
DR29.82
DR29.150
DR30.150
DR31.150
DR32.150
DR33.150
DR34.150
DR35.150
DR36.150
DR37.150
DR38.150
DR39.150
DR40.150
DR41.150
DR42.150
DR43.150
DR44.150
DR45.150
DR69.82
DR70.70



LEGEND

- Pt green schist (tuff & tuff breccia)
- Pc conglomerate
- Pp pelitic schist
- Pm psammitic schist
- Pa calcareous schist
- Pl limestone
- Gr granite
- Po porphyrite

- vein
- fault
- anticlinal axis / synclinal axis / overturned fold
- bedding plane

Sample No.	Zn(ppm)
DR 28	56

△ Sample analysed by B.R.P.M.

- Zn ≥ 3076 ppm
- 3076 ppm > Zn ≥ 838 ppm
- 838 ppm > Zn ≥ 229 ppm