





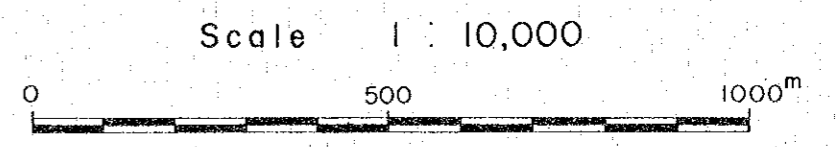
PL. 8-2

国際協力事業団  
11636  
図書資料室蔵書

GEOLOGICAL SURVEY  
OF  
HAUT ATLAS OCCIDENTAL AREA, MOROCCO  
( PHASE I )

GEOCHEMICAL MAP FOR Pb  
IN ERDOUZ SECTOR

JAPAN INTERNATIONAL COOPERATION AGENCY  
METAL MINING AGENCY OF JAPAN  
JANUARY 1984  
Prepared by MINDECO





31°04'

A  
0m

6°25'

-1000m

31°03'

-2000m

A'

3°04'

6°22'

-1000m

-2000m  
31°03'



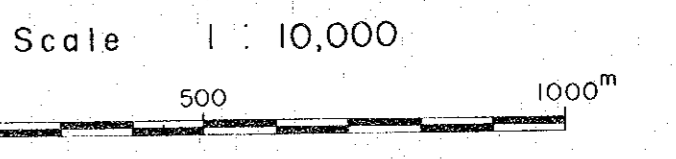




Adassil

ERDOUZ

JAPAN INTERNATIONAL COOPERATION AGENCY  
 METAL MINING AGENCY OF JAPAN  
 JANUARY 1984  
 Prepared by MINDECO



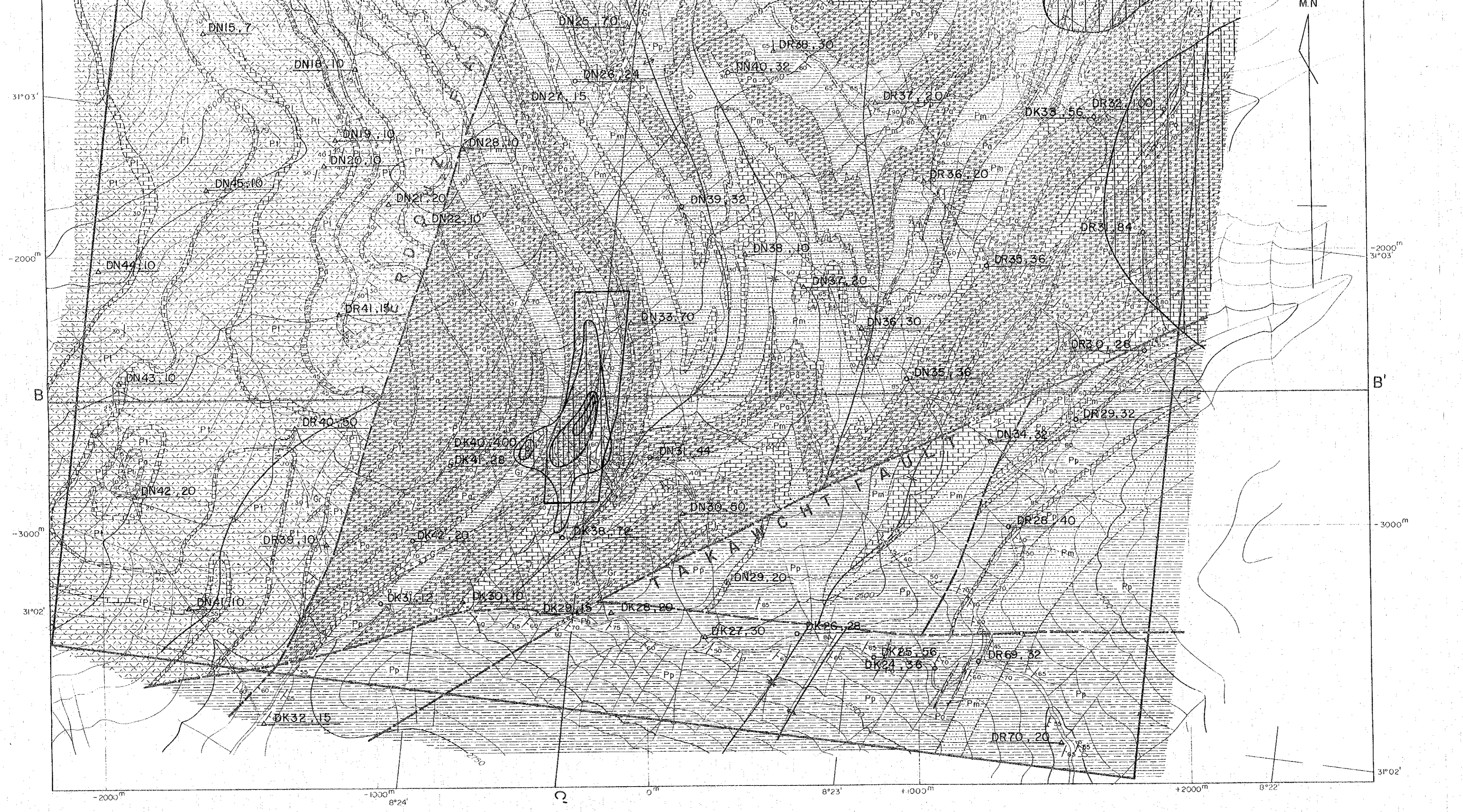
LEGEND

- |                |                                       |               |
|----------------|---------------------------------------|---------------|
|                | Pt green schist (tuff & tuff breccia) |               |
|                | Pc conglomerate                       |               |
|                | Pp pelitic schist                     |               |
|                | Pm psammitic schist                   |               |
|                | Pa calcareous schist                  |               |
|                | Pl limestone                          |               |
| Intrusive rock |                                       | Gr granite    |
|                |                                       | Po porphyrite |
|                |                                       | vein          |

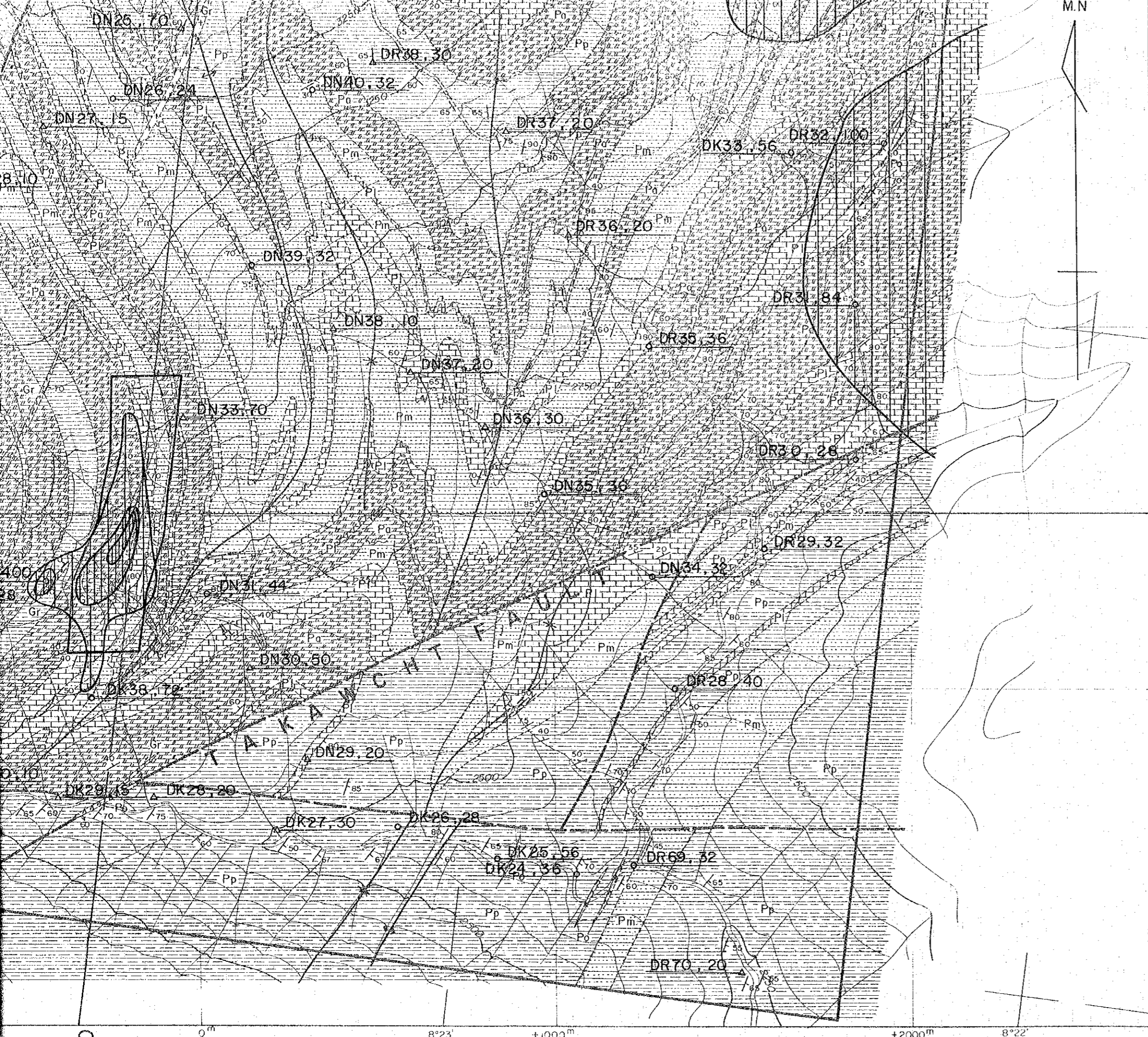
M.N.

-2000m  
31°03'









LEGEND

- Pt green schist (tuff & tuff breccia)
  - Pc conglomerate
  - Pp pelitic schist
  - Pm psammitic schist
  - Pa calcareous schist
  - Pl limestone
  - Gr granite
  - Po porphyrite
- 
- vein
  - fault
  - anticlinal axis / synclinal axis / overturned fold
  - bedding plane

| Sample NO. | Pb(ppm) |
|------------|---------|
| DR28       | 40      |

△ Sample analysed by B. R. P. M.

- Pb ≥ 1439 ppm
- 1439 ppm > Pb ≥ 331 ppm
- 331 ppm > Pb ≥ 76 ppm

-2000m  
 31°03'  
 B'  
 -3000m  
 31°02'

0m      8°23'      +1000m      +2000m      8°22'