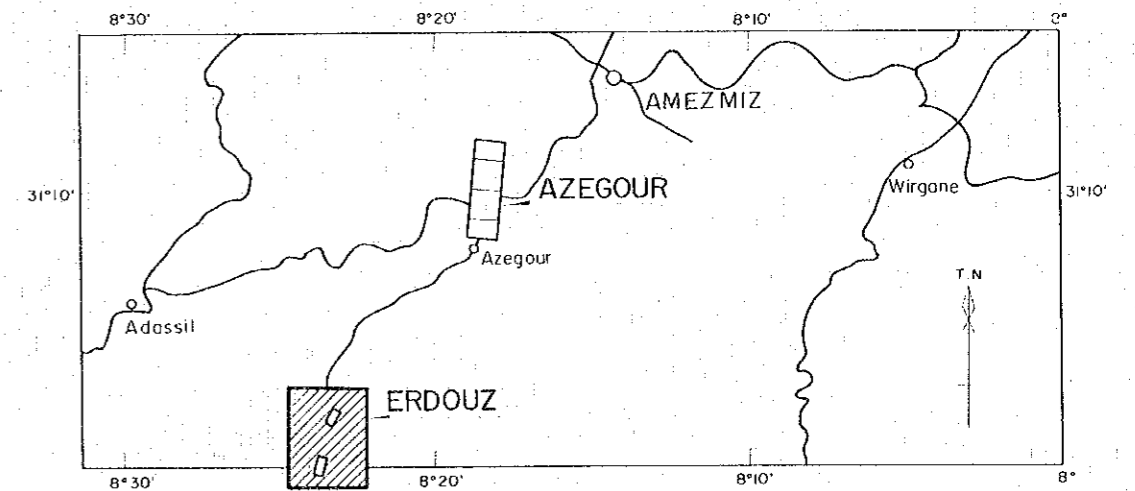


GEOLOGICAL SURVEY
OF
HAUT ATLAS OCCIDENTAL AREA, MOROCCO
(PHASE I)

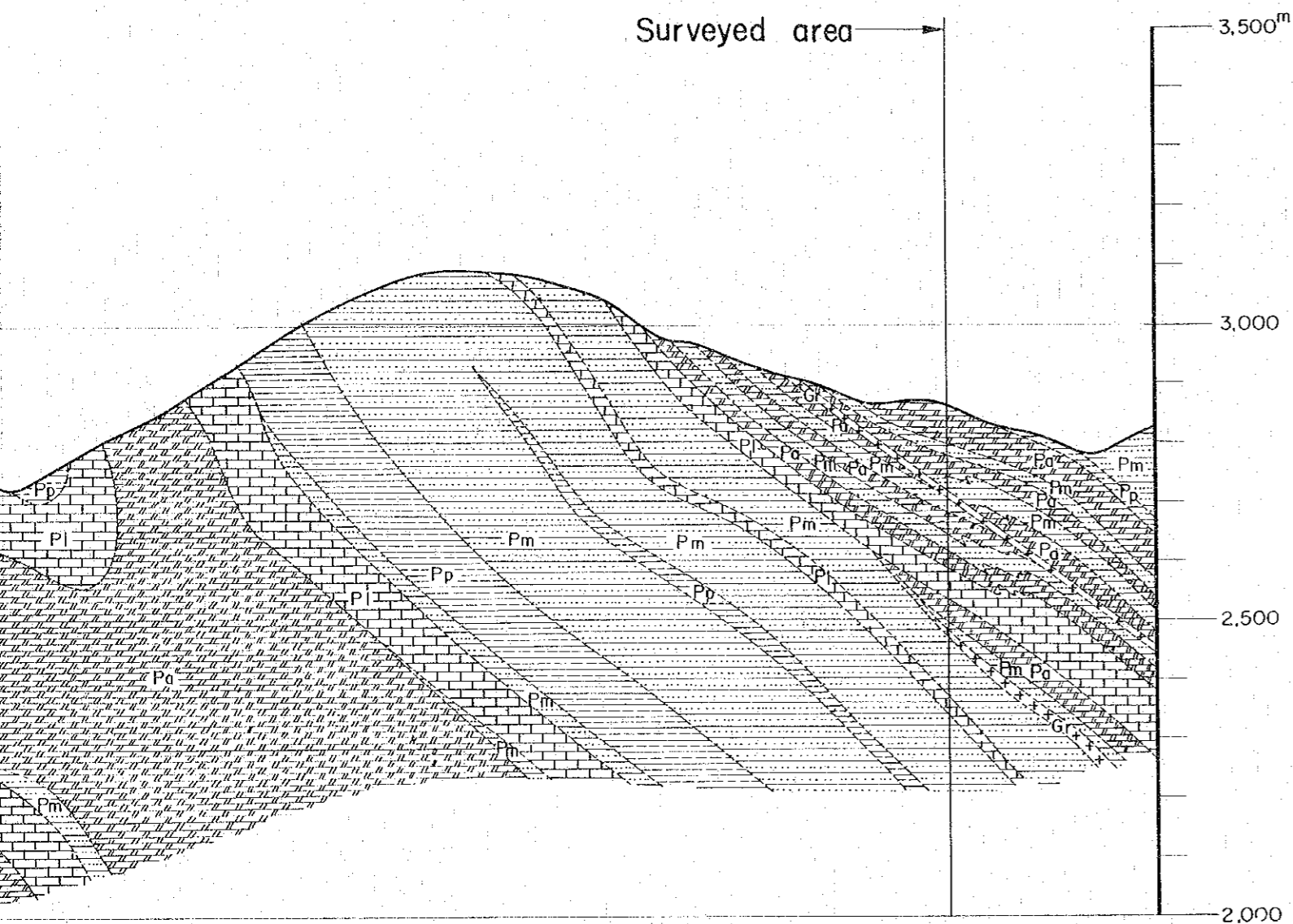
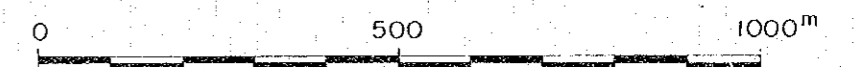
GEOLOGICAL PROFILES OF
ERDOUZ SECTOR

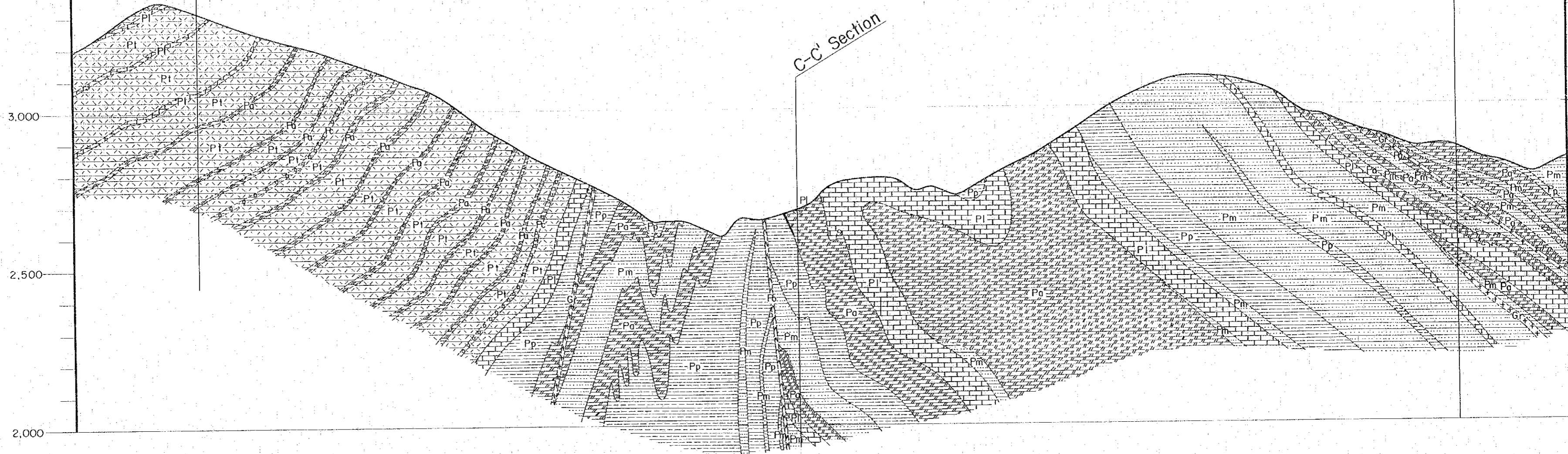
国際協力事業団
11636
図書資料室蔵書



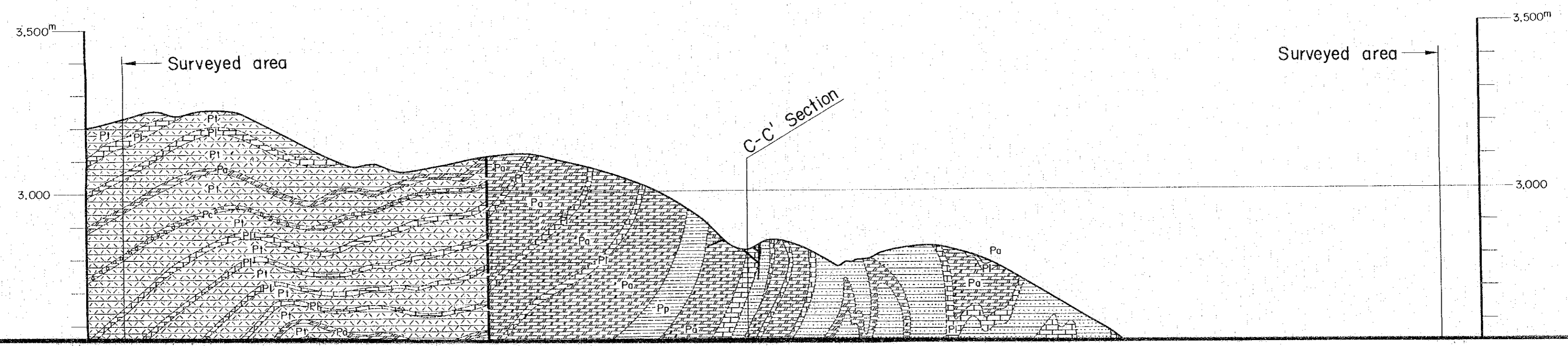
JAPAN INTERNATIONAL COOPERATION AGENCY
METAL MINING AGENCY OF JAPAN
JANUARY 1984
Prepared by MINDECO

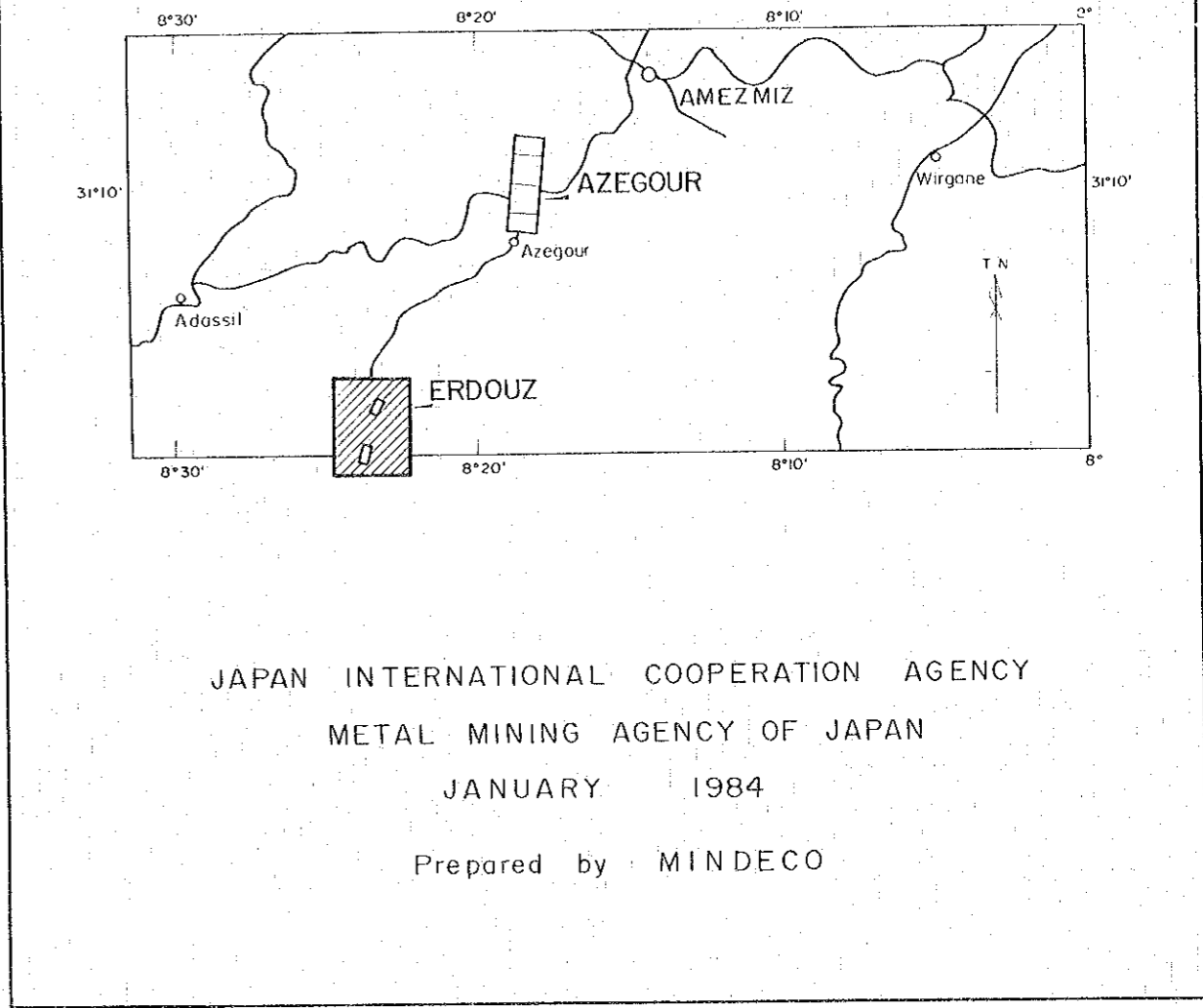
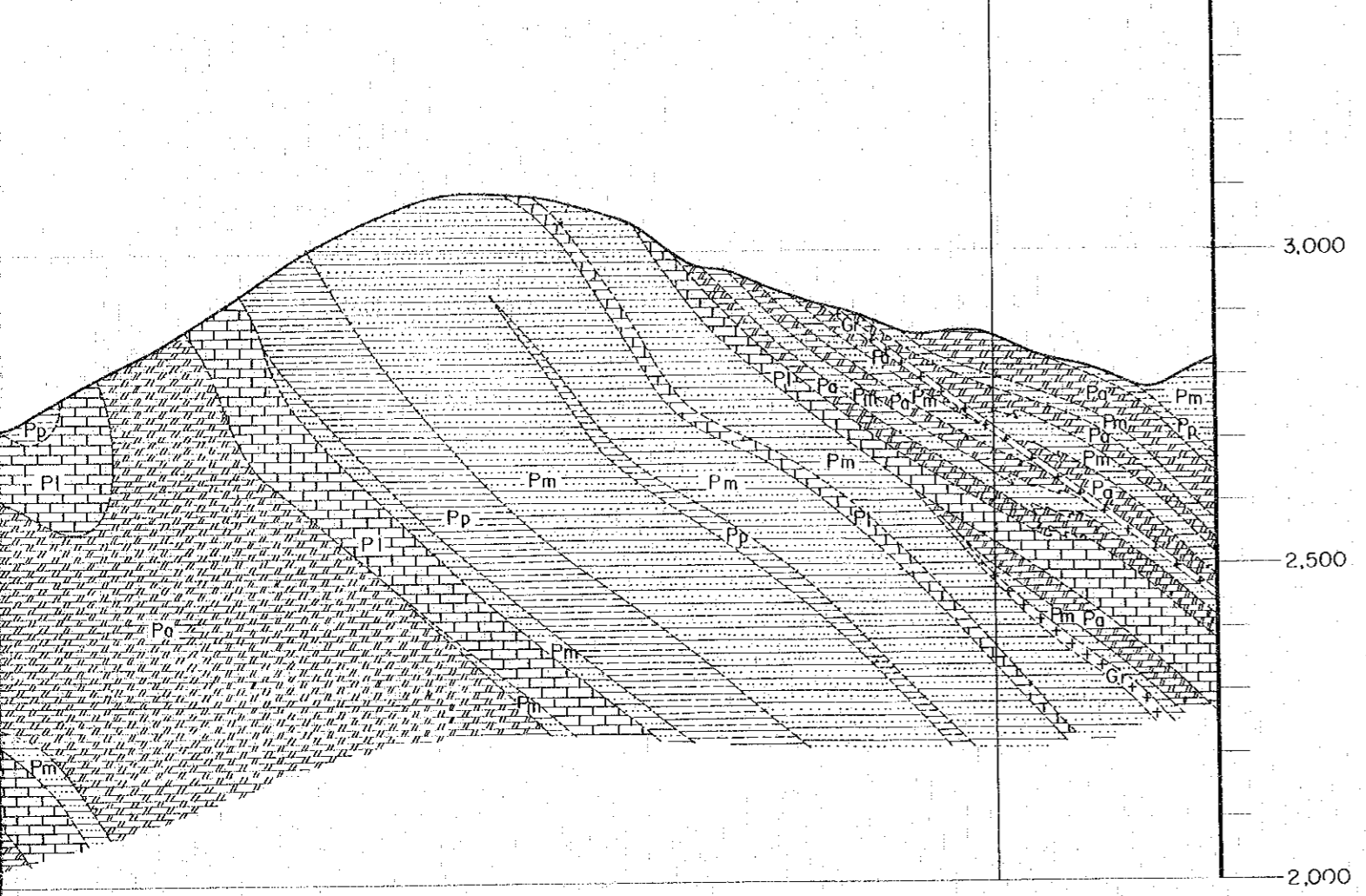
Scale 1 : 10,000



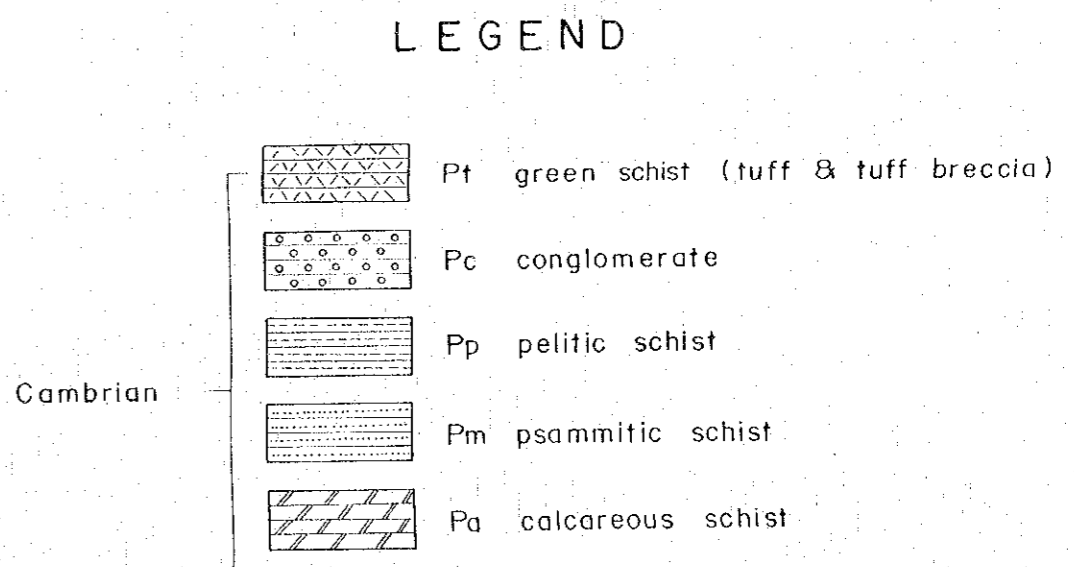
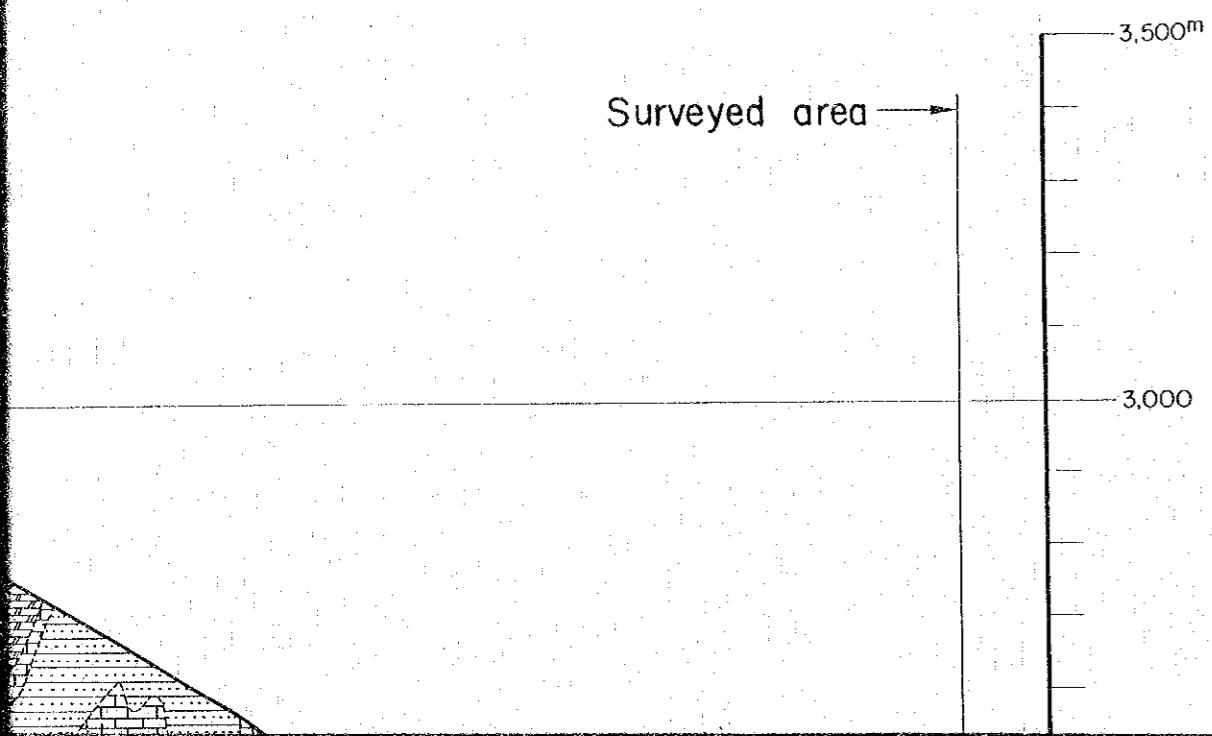
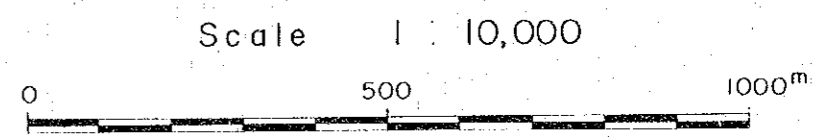


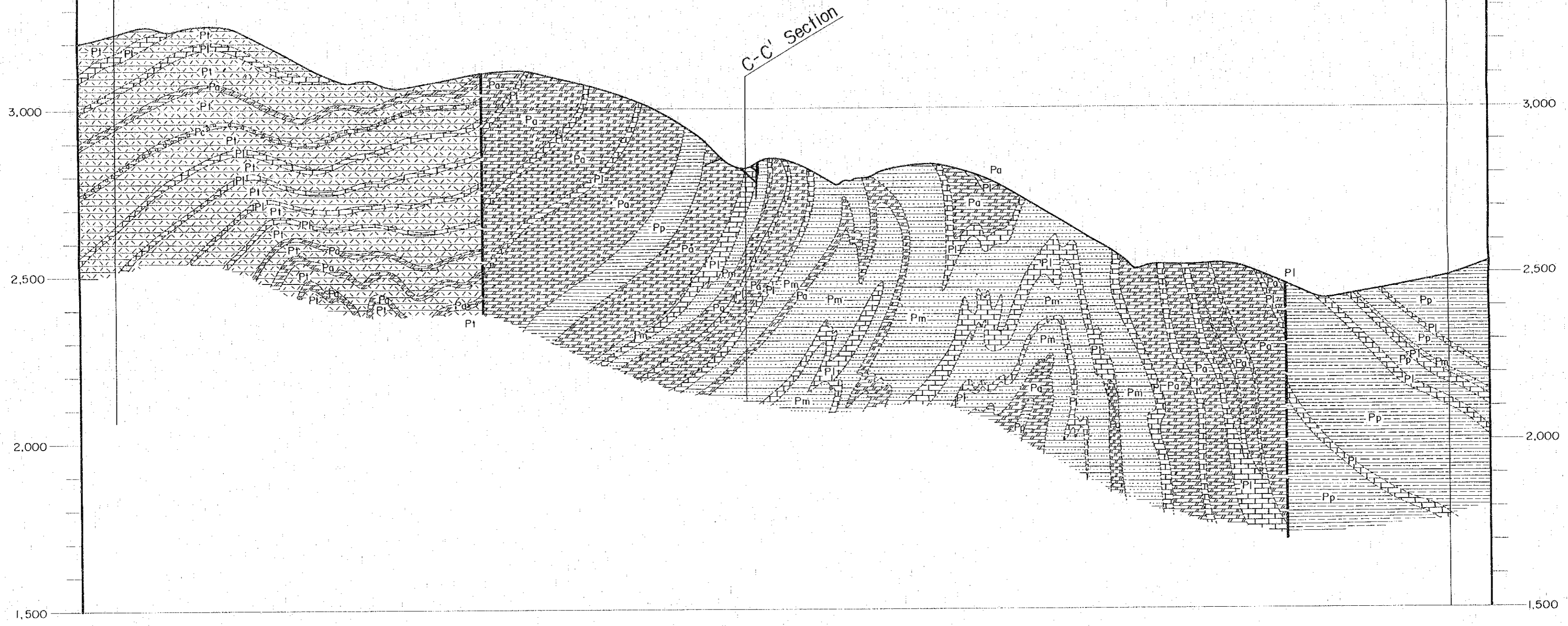
B ~ B' Section



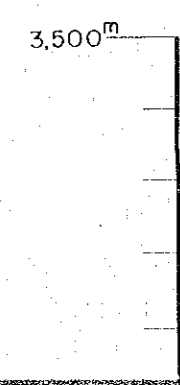


JAPAN INTERNATIONAL COOPERATION AGENCY
METAL MINING AGENCY OF JAPAN
JANUARY 1984
Prepared by MINDECO





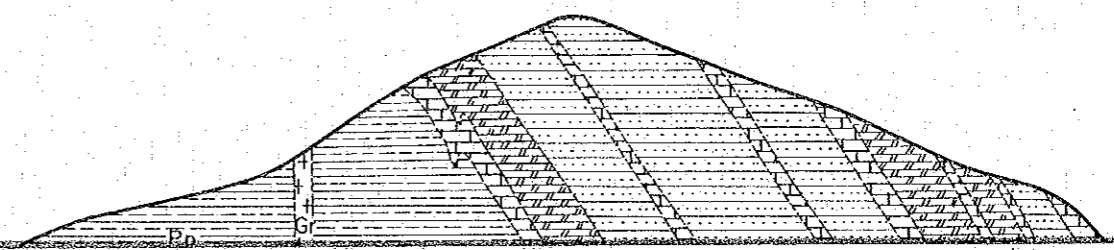
C~C' Section

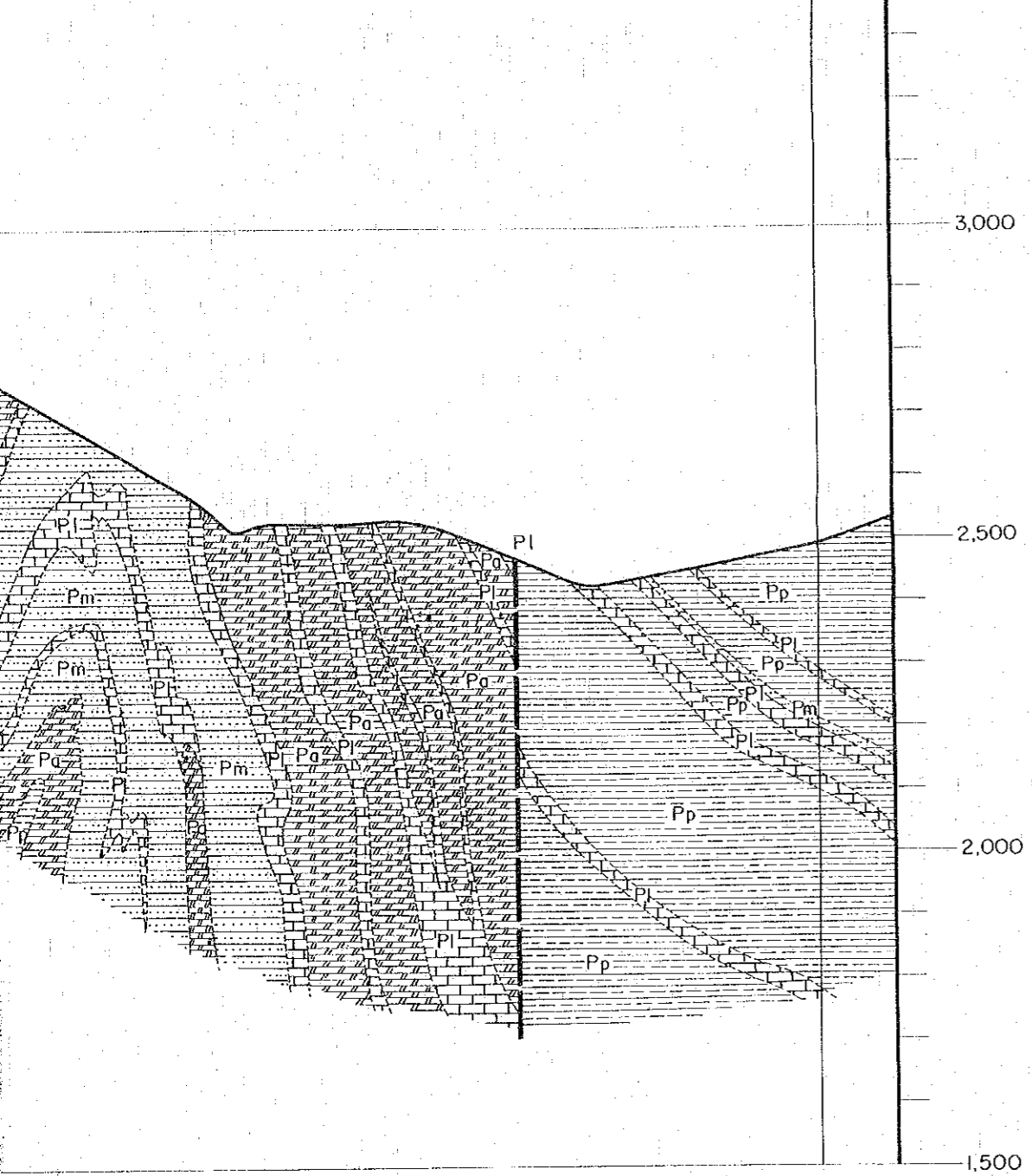


← Surveyed area

A-A' Section

B-B' Section

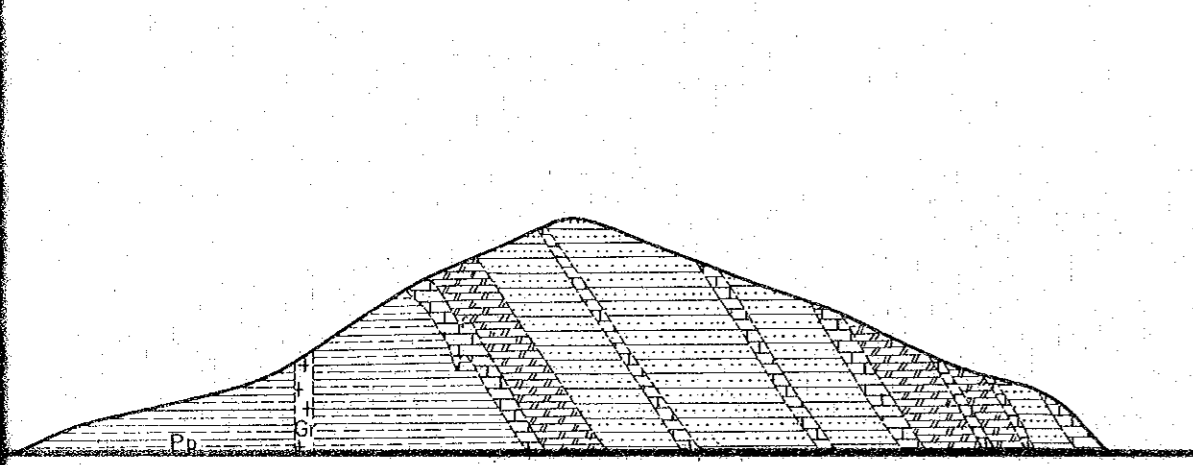




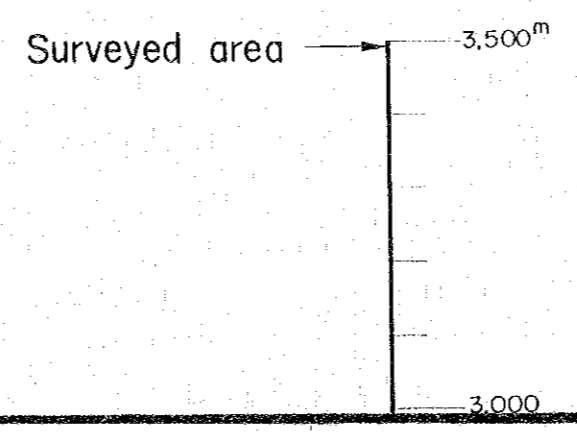
LEGEND

- Pt green schist (tuff & tuff breccia)
- Pc conglomerate
- Pp pelitic schist
- Pm psammitic schist
- Pa calcareous schist
- Pl limestone
- Gr granite
- Po porphyrite
- vein
- fault

C~C' Section



B-B' Section



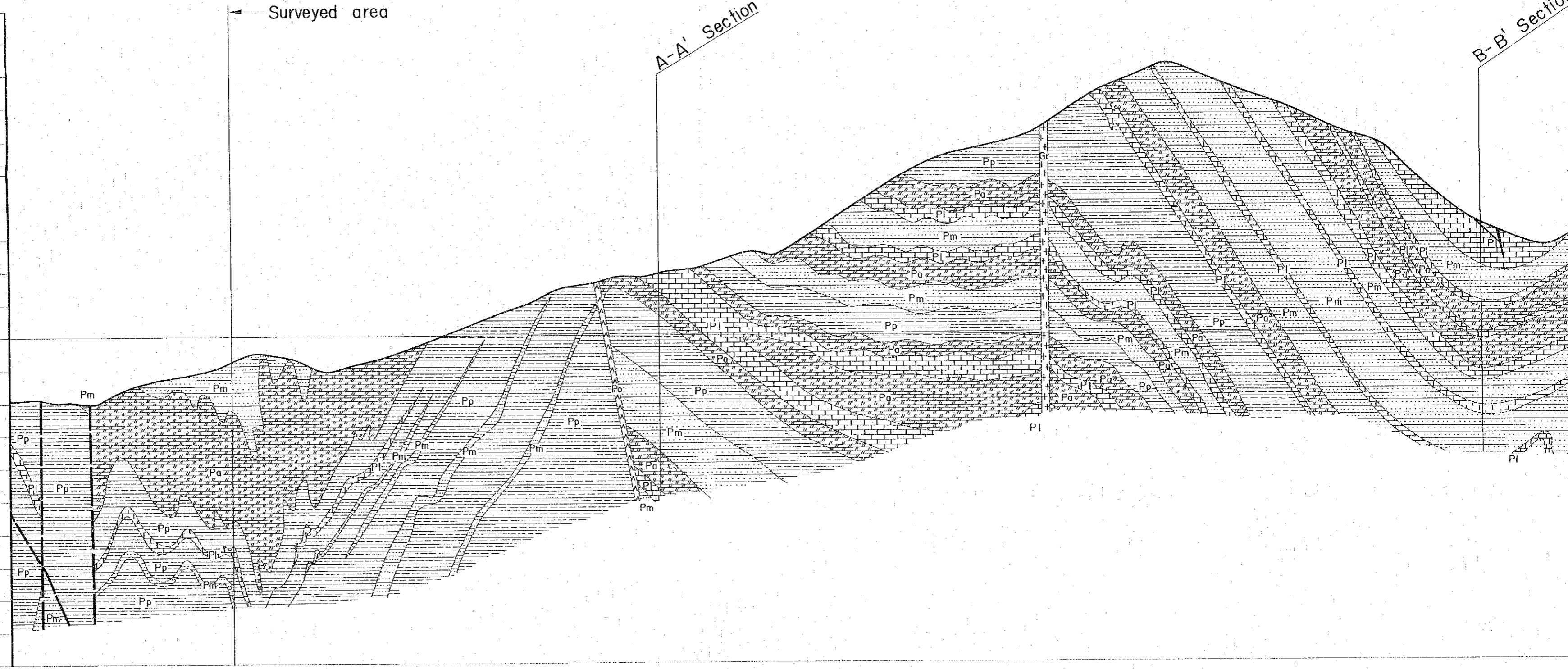
C~C' Section

3,500^m
3,000
2,500
2,000
1,500

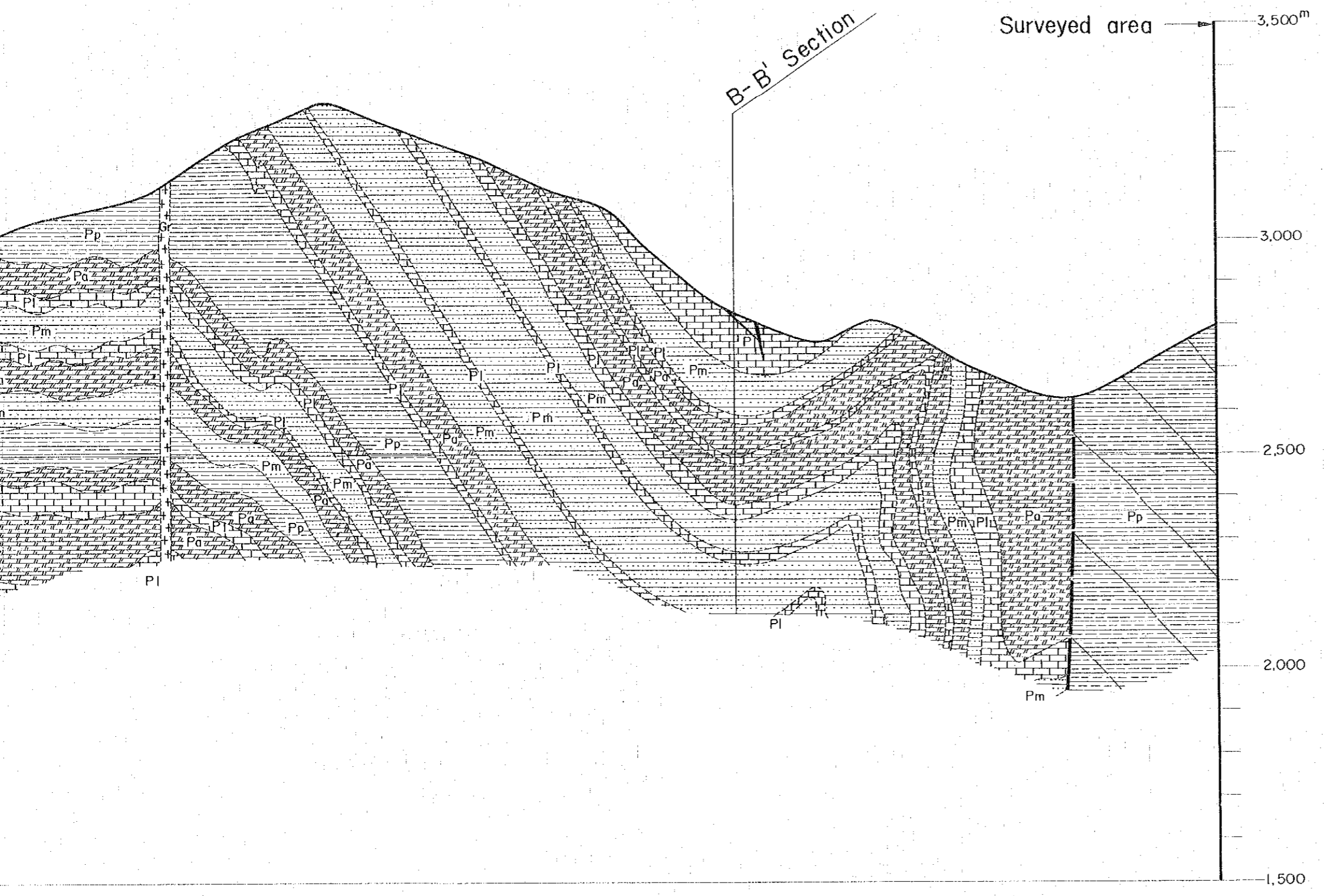
← Surveyed area

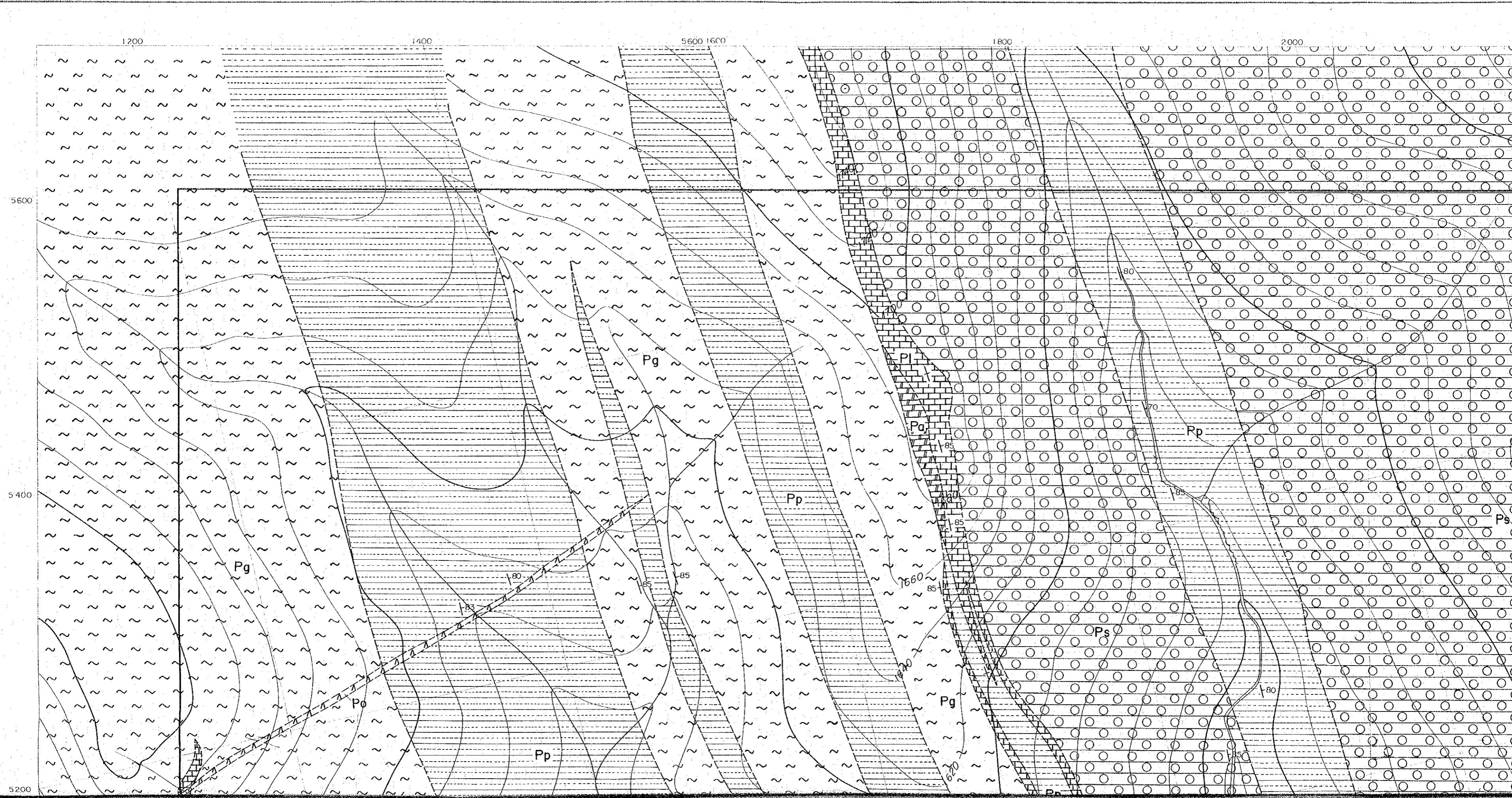
A-A' Section

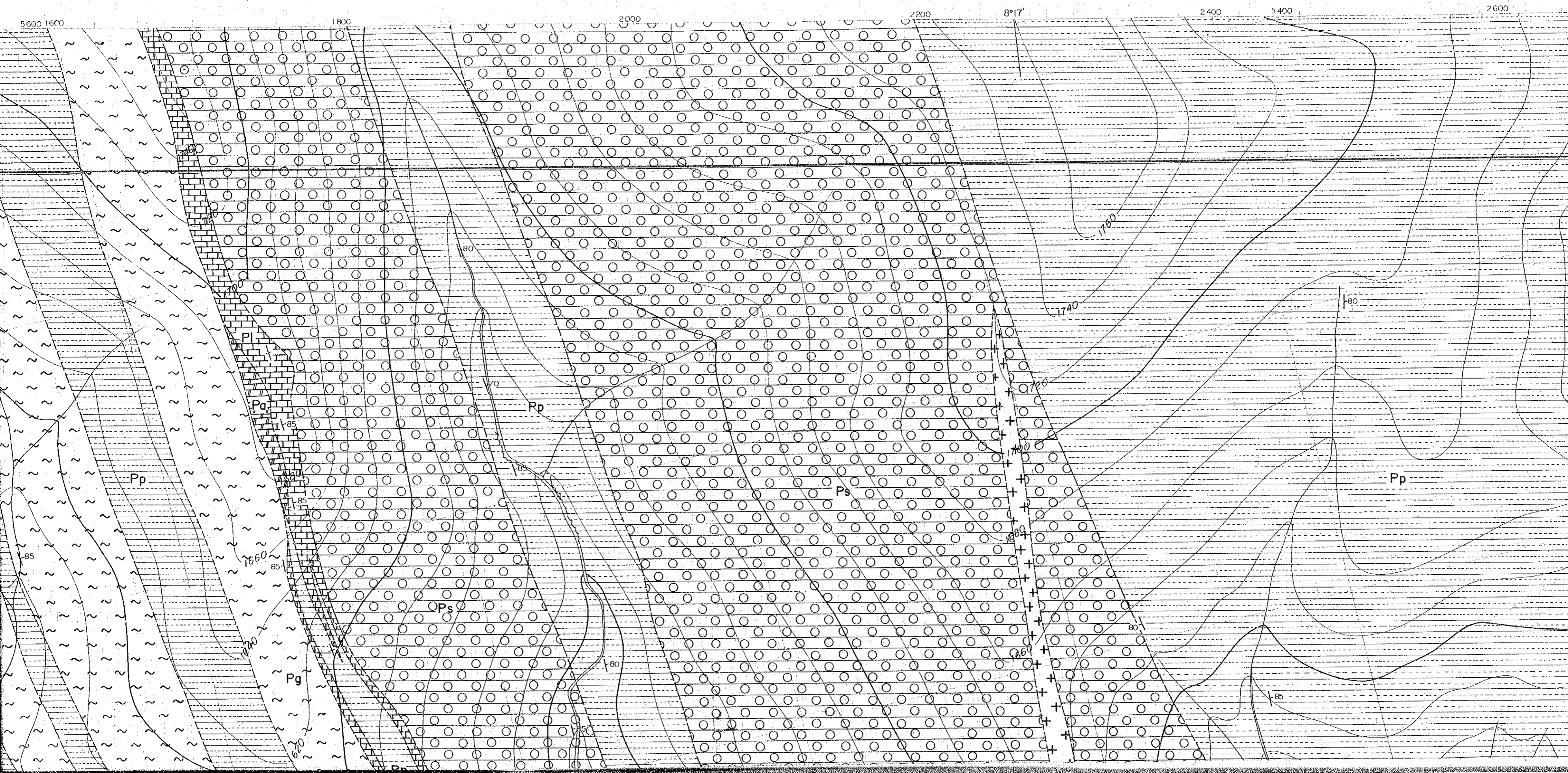
B-B' Section

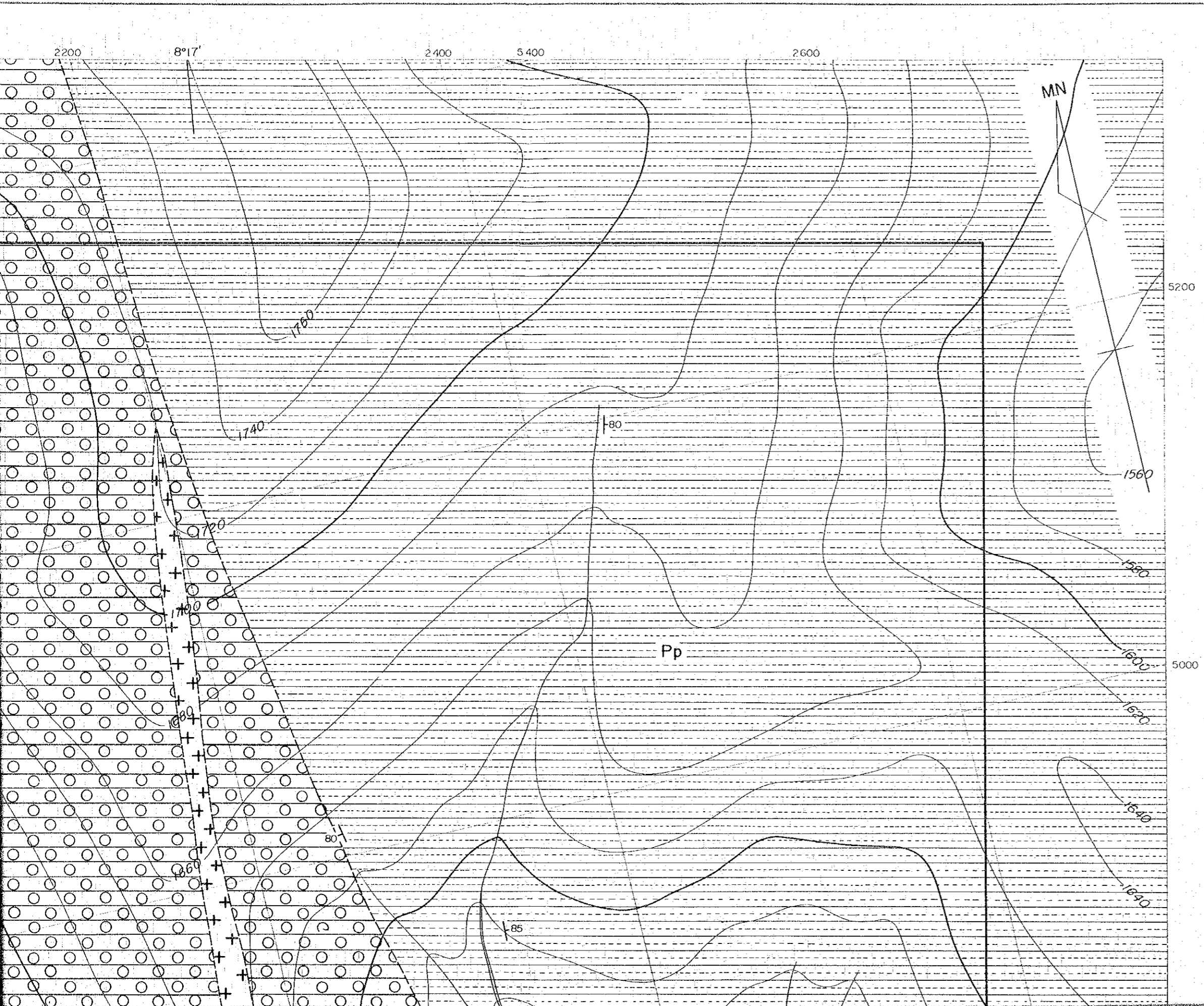


~C' Section







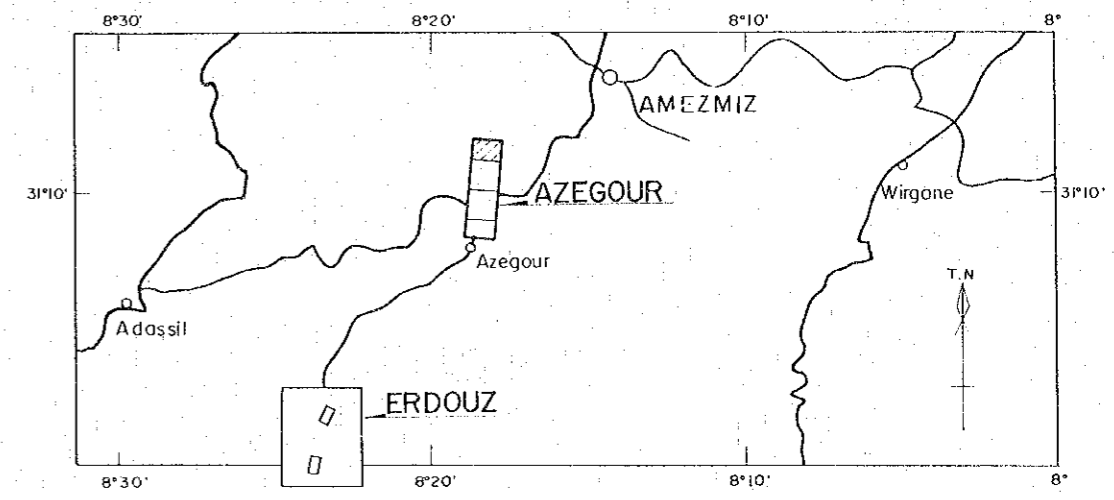


PL. 5 - 1

GEOLOGICAL SURVEY
OF
HAUT ATLAS OCCIDENTAL AREA, MOROCCO
(PHASE I)

GEOLOGICAL MAP OF
AZEGOUR SECTOR

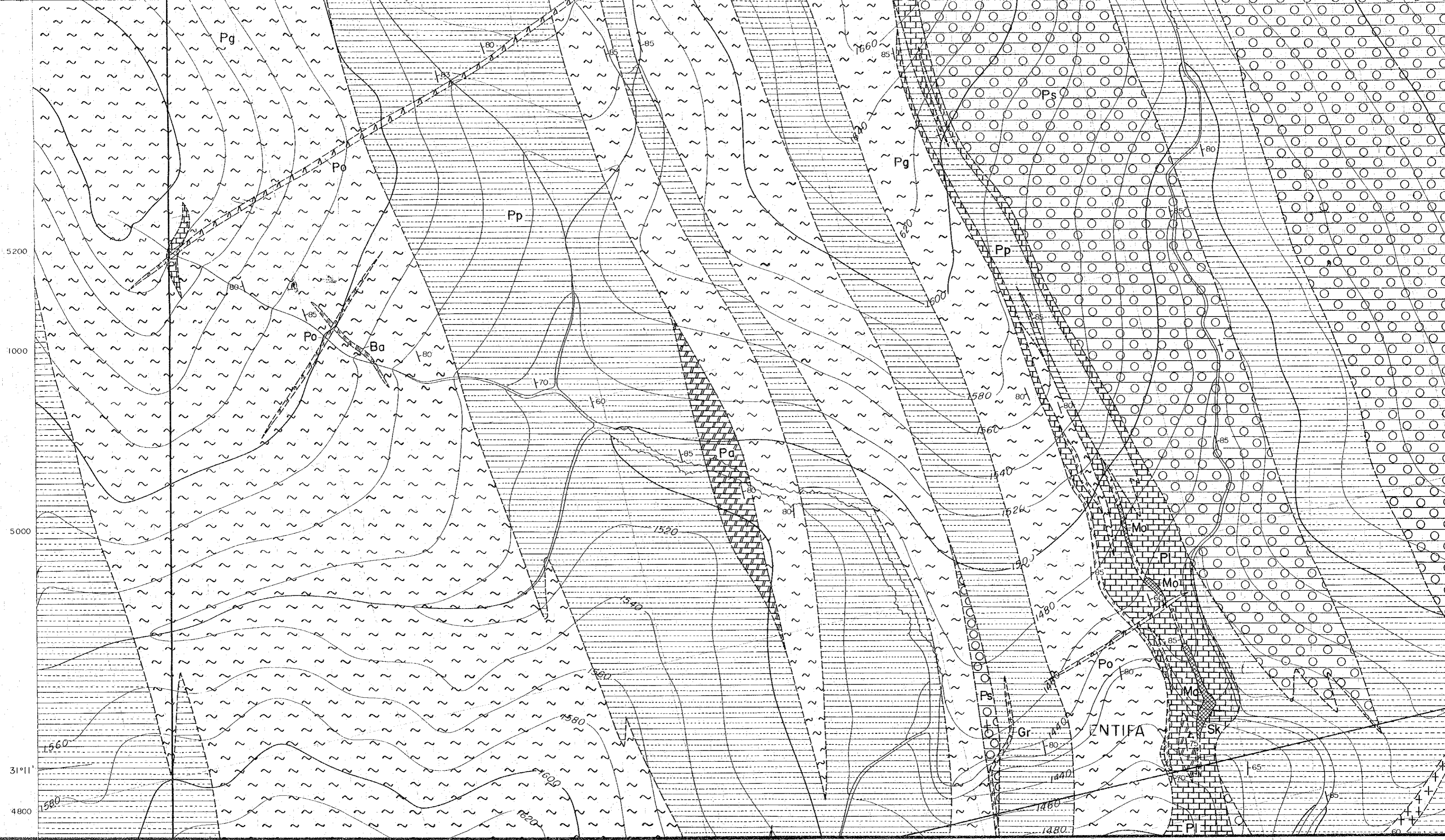
国際協力事業団
11636
図書資料

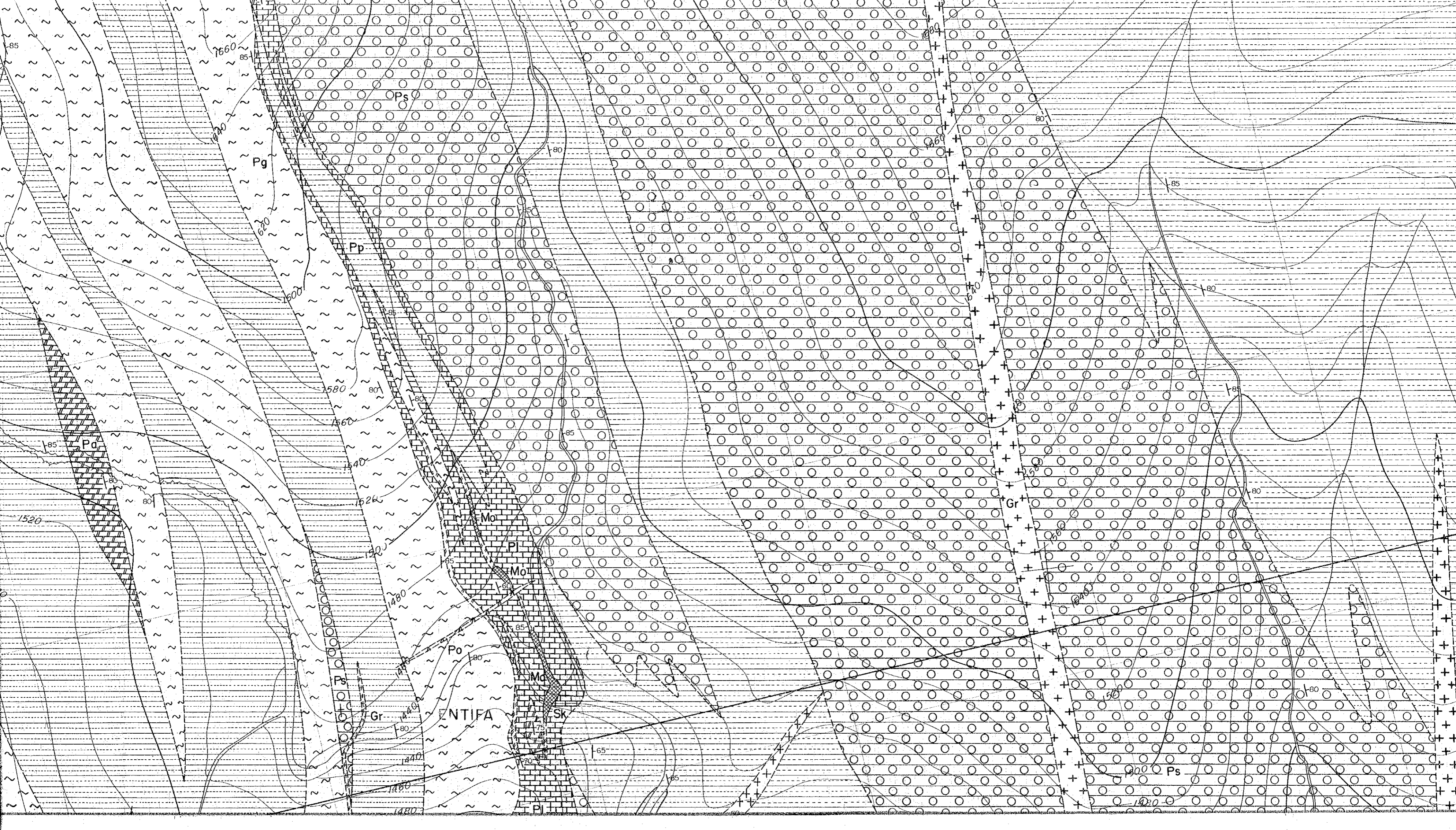


JAPAN INTERNATIONAL COOPERATION AGENCY
METAL MINING AGENCY OF JAPAN
JANUARY 1984
Prepared by MINDECO

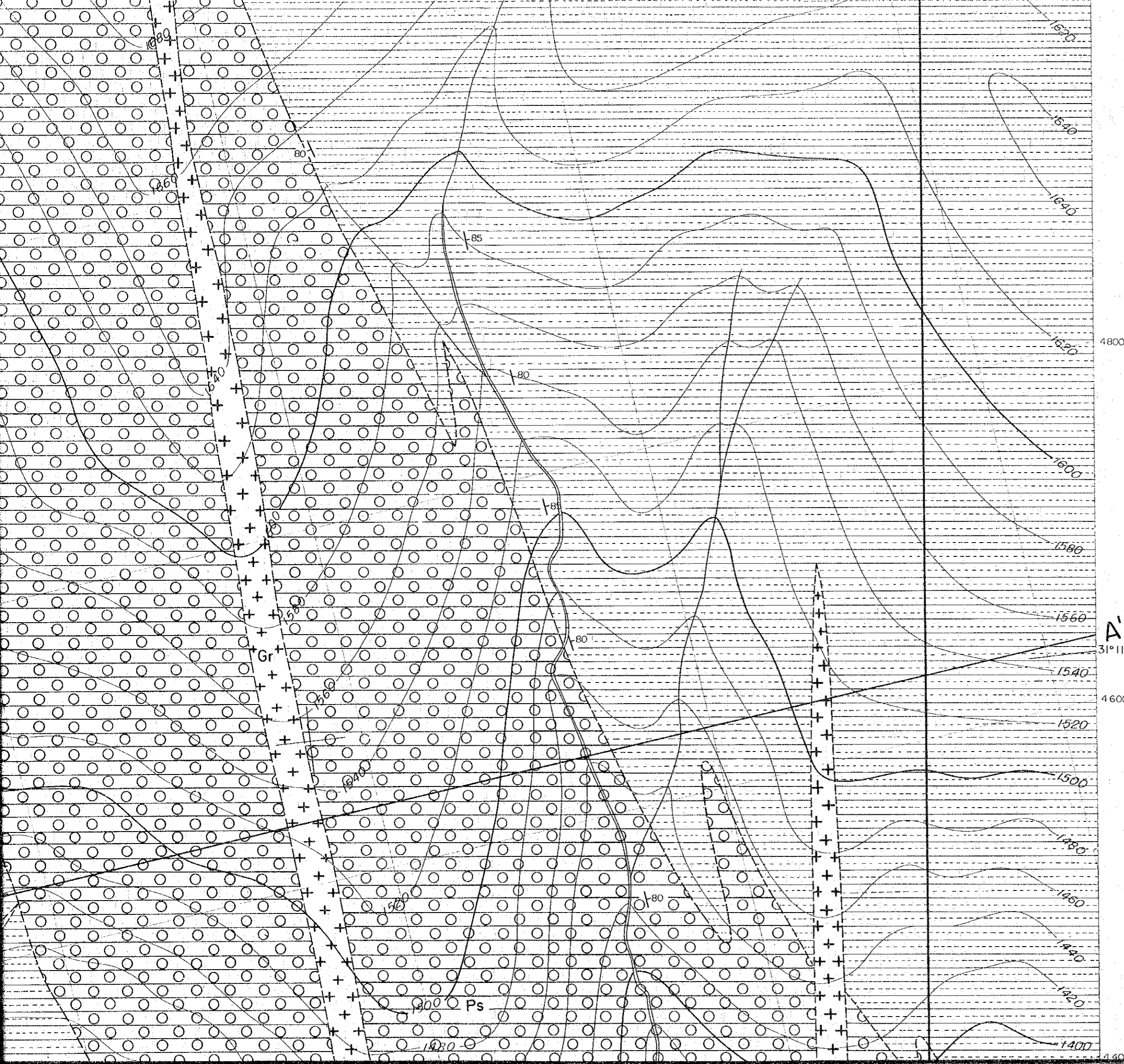
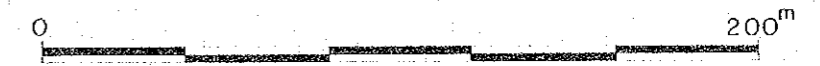
Scale 1 : 2,000





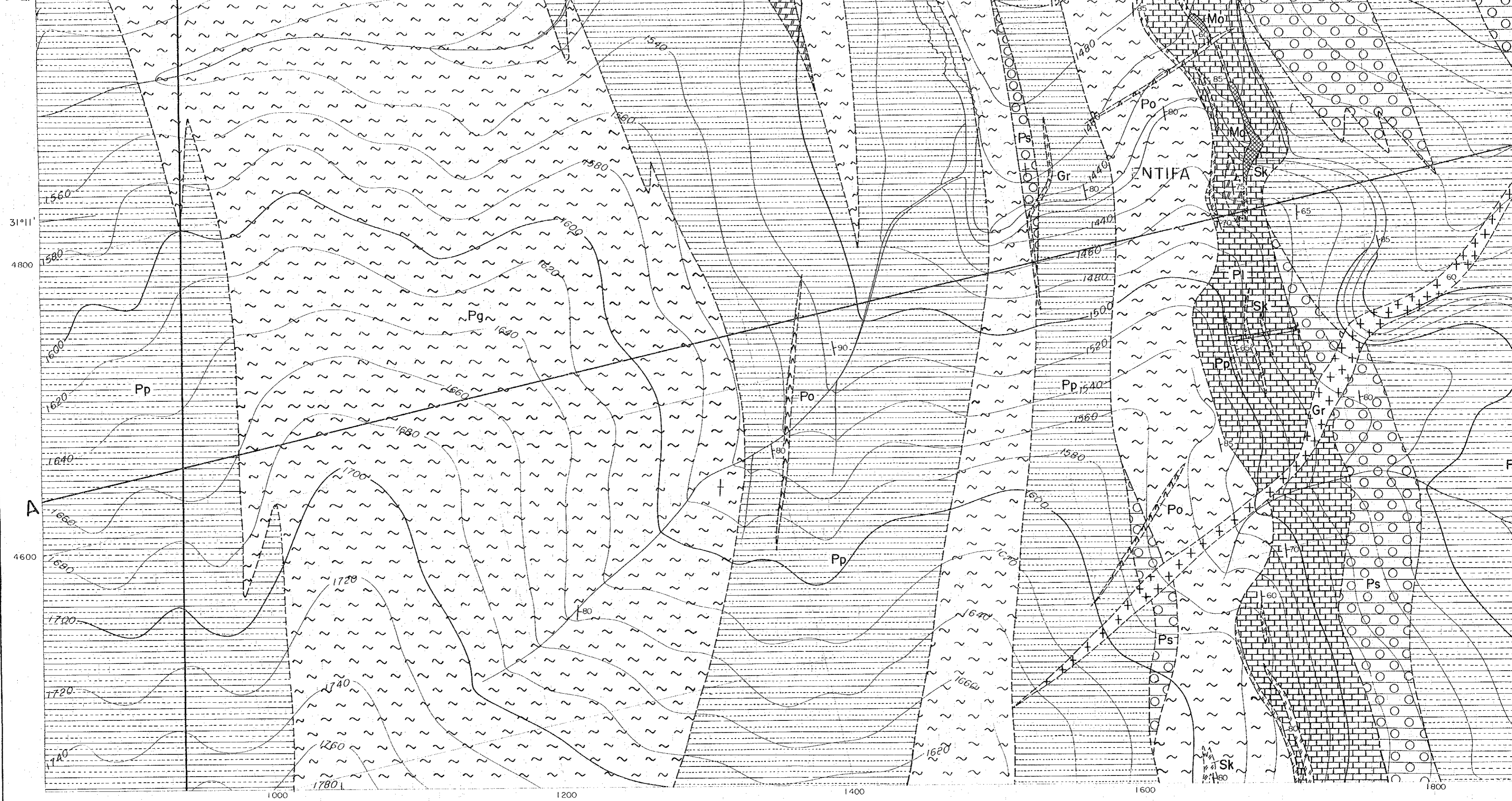


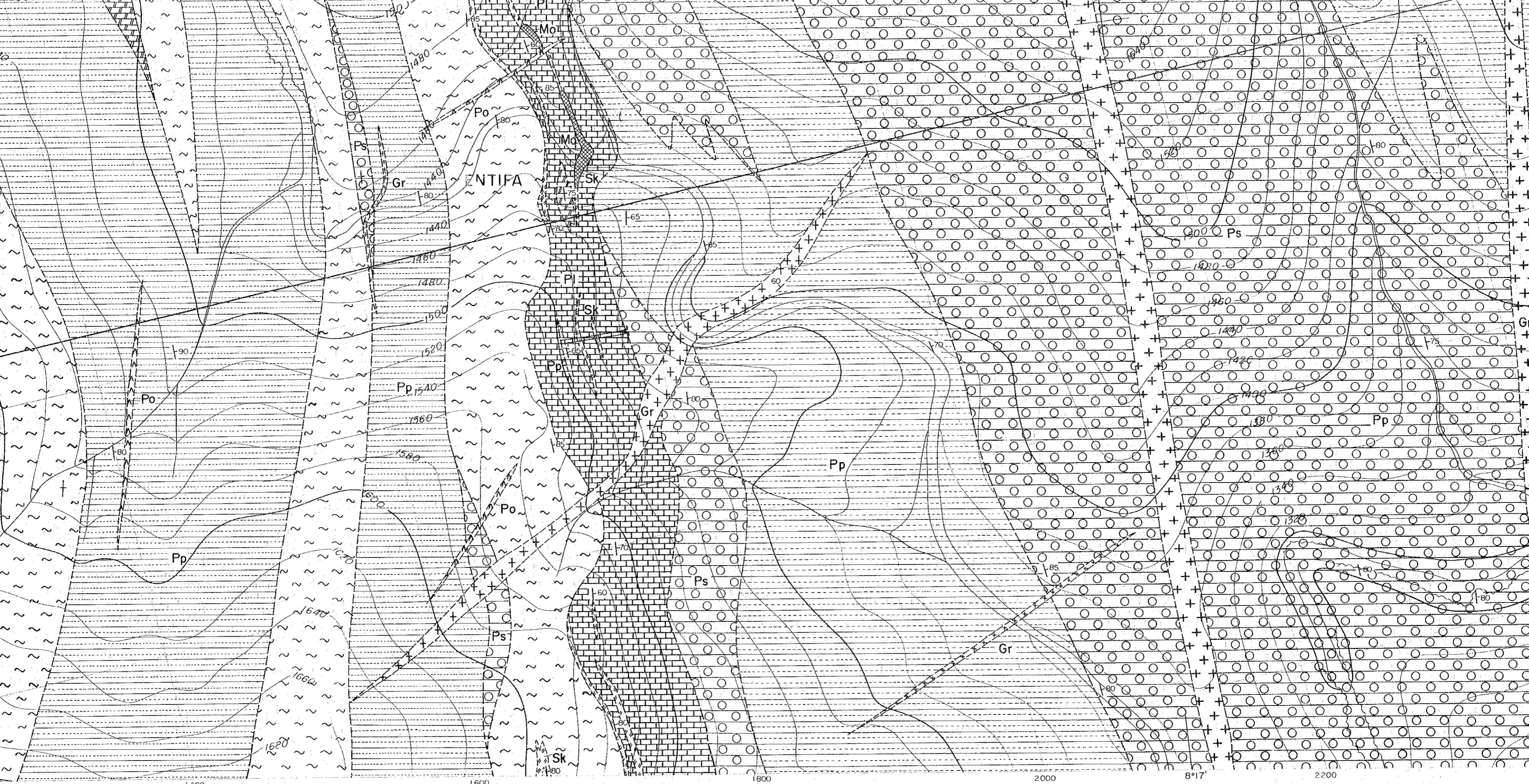
Scale 1 : 2,000



LEGEND

- | | | | |
|----------------|--|------|---|
| Quaternary | | Q | sand, gravel, travertine |
| Cretaceous | | Ks | sandstone, siltstone, limestone, dolomite |
| | | Kc | conglomerate |
| | | Pp | pelitic schist |
| Cambrian | | Ps | spotted schist |
| | | Pg | gneissose schist |
| | | Pa | calcareous schist |
| | | Pl | limestone |
| | | Gr | granite |
| Intrusive rock | | Po | porphyrite |
| | | Ba | basalt, amphibolite, lamprophyre |
| | | Sk | skarn (garnet, hedenbergite, epidote, wollastonite) |
| | | vein | (q... quartz
h... hematite) |
| | | Mo | molybdenite |





1400

1600

1800

2000

8°17'

2200