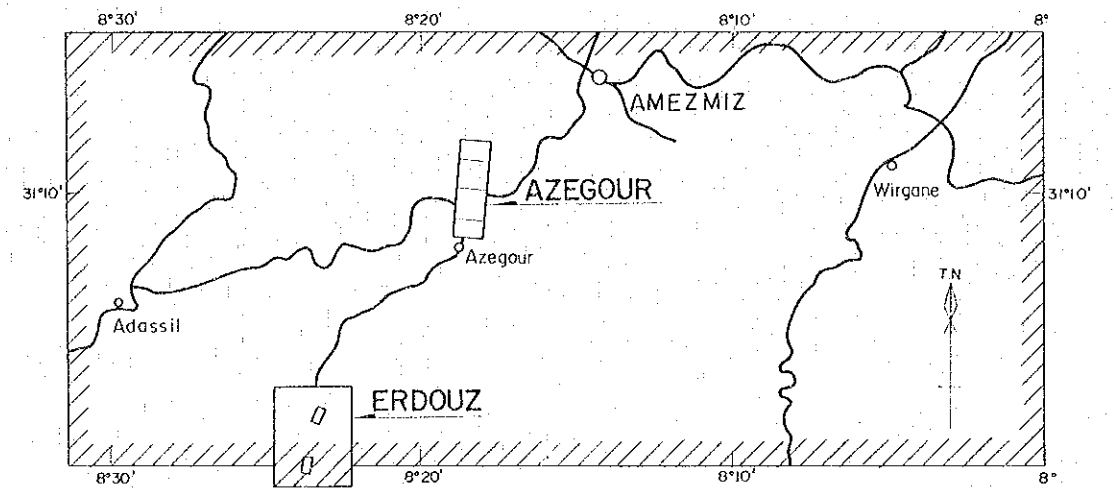


GEOLOGICAL SURVEY
OF
HAUT ATLAS OCCIDENTAL AREA, MOROCCO
(PHASE I)

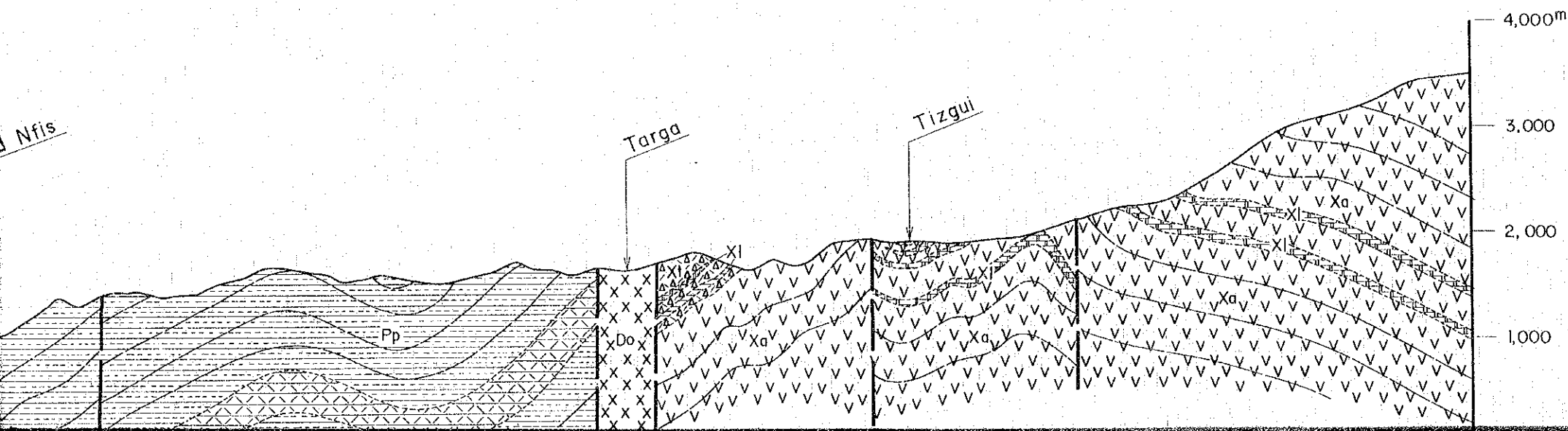
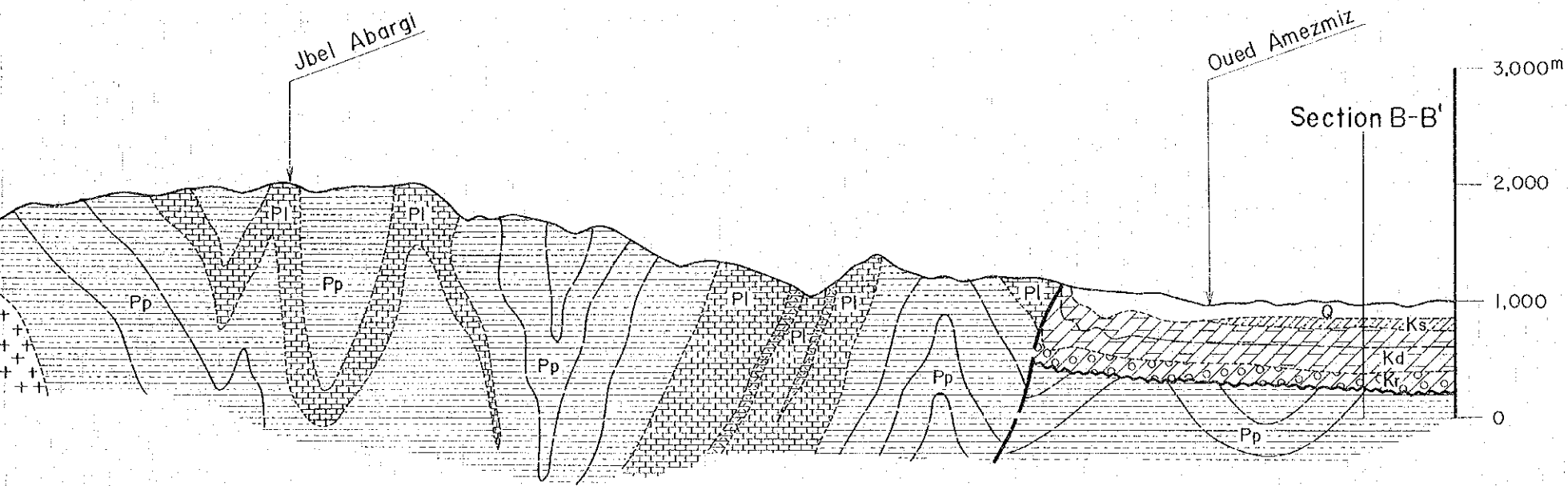
GEOLOGICAL PROFILES OF
NORTHERN AREA

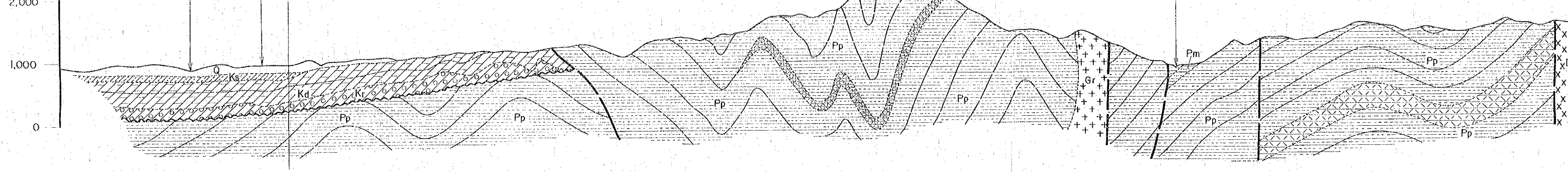
国際協力事業団
11636
図書資料室蔵書



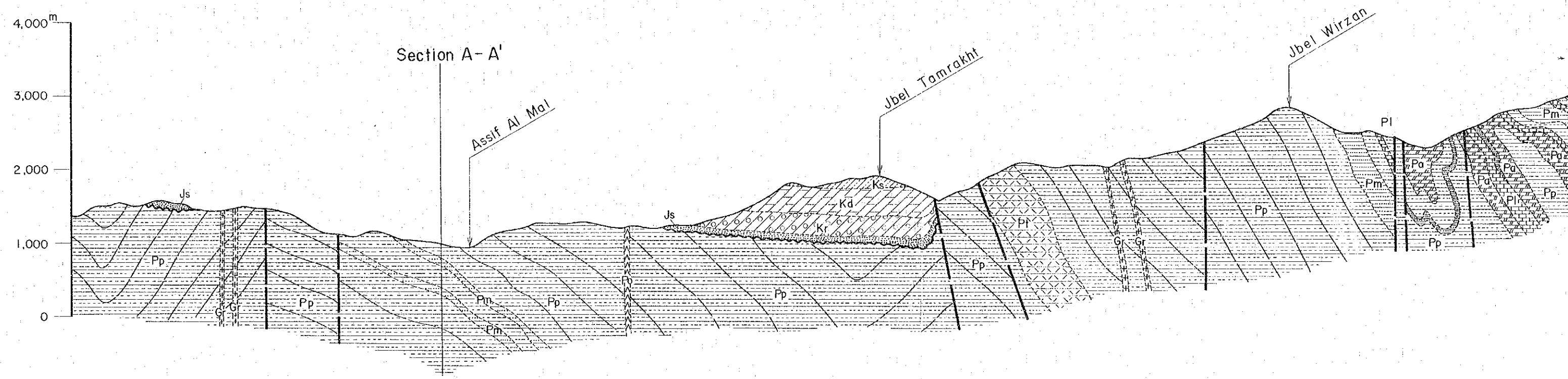
JAPAN INTERNATIONAL COOPERATION AGENCY
METAL MINING AGENCY OF JAPAN
JANUARY 1984
Prepared by MINDECO

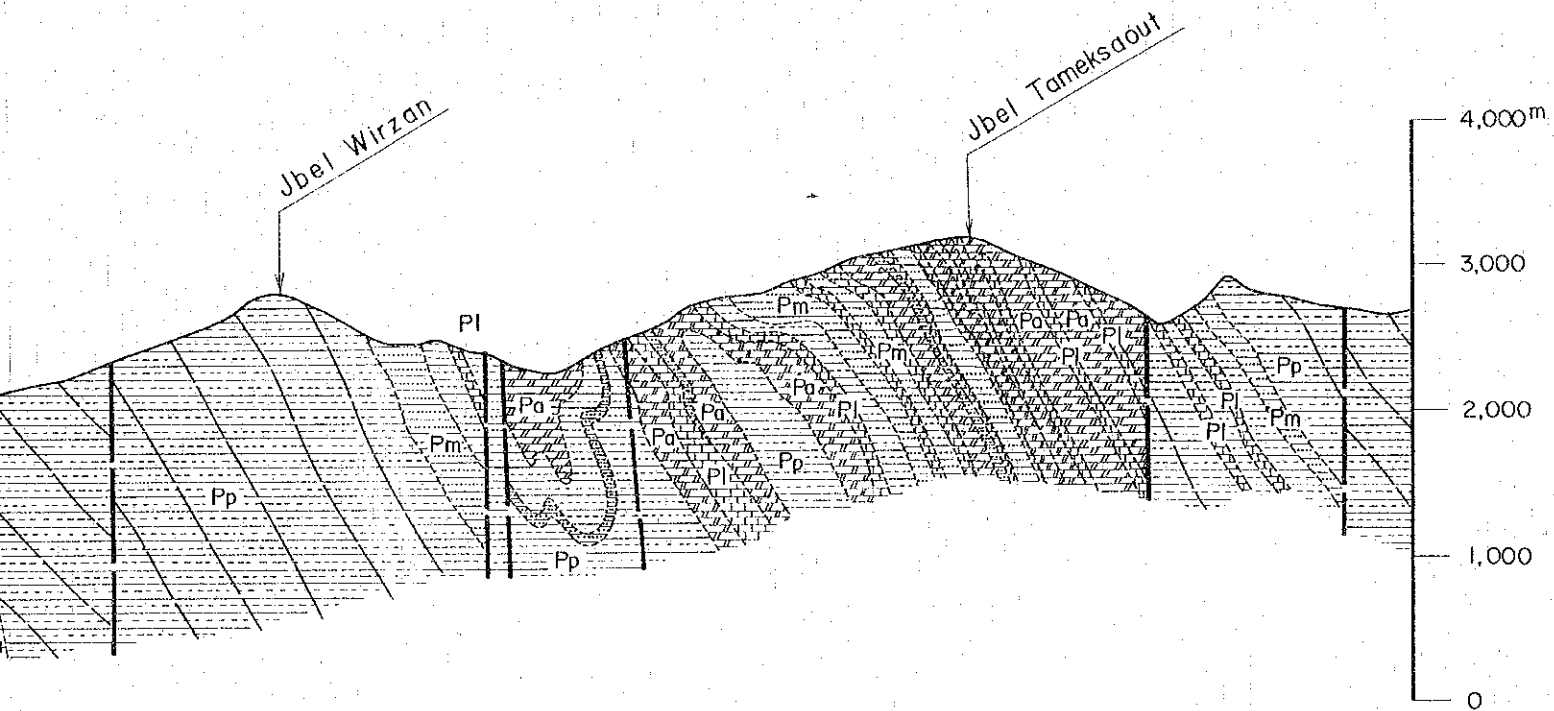
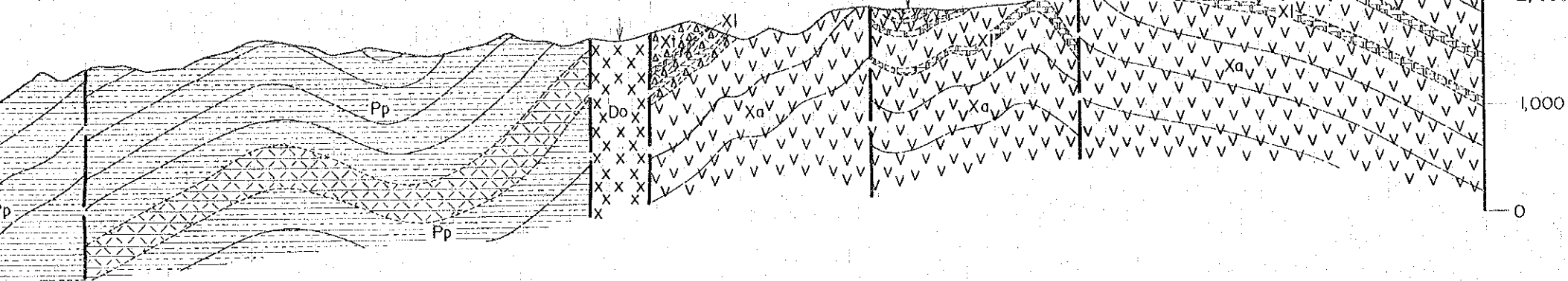
Scale 1 : 50,000





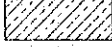
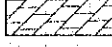
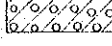
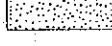
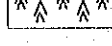
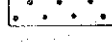
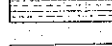
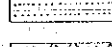
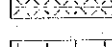
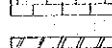
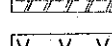
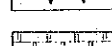
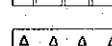
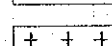
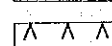
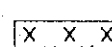






C — C'



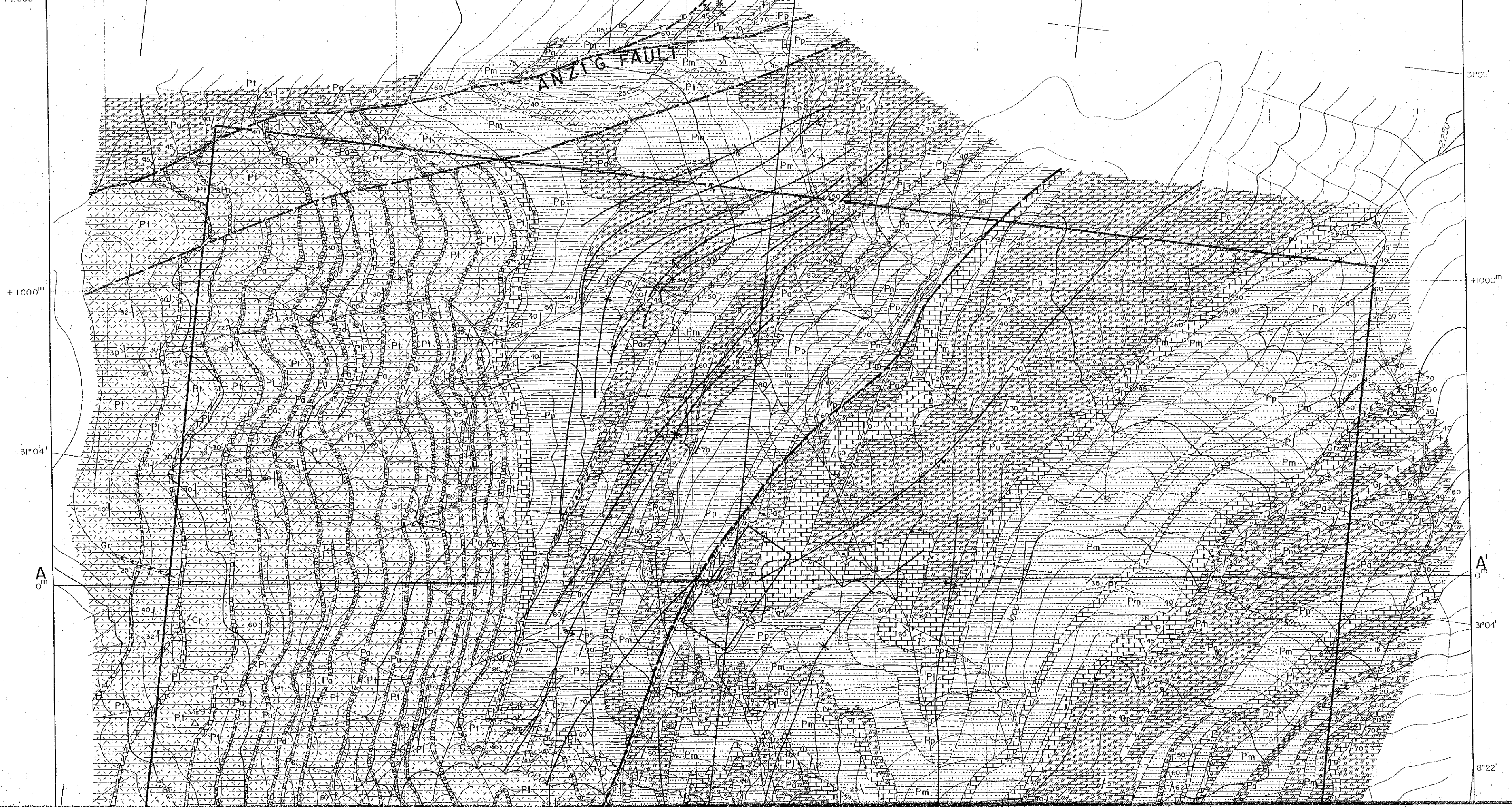


LEGEND

Quaternary		Q	sand, gravel, travertine
Tertiary		Es	sandstone
Cretaceous		Ks	sandstone, siltstone
		Kd	dolomite, siltstone, sandstone
		Kr	red sandstone
Jurassic		Js	sandstone, siltstone
Triassic		Tb	basalt
		Ts	sandstone, siltstone
Palaeozoic		Pp	pelitic schist
		Pm	psammitic schist
		Pt	green schist (tuff, tuff breccia)
		Pl	limestone
		Pa	calcareous schist
		Xa	andesite
Pre-Cambrian		Xl	limestone
		Xt	tuff, tuff breccia, lapilli tuff
Intrusive rock		Gr	granite, diorite
		Po	porphyrite
		Do	dolerite
			fault
			unconformity
			stratigraphic boundary

+2000^m -2000^m 8°25' -1000^m 8°24' 0^m 31°05' +1000^m 8°23' +2000^m +2000^m

ANZIG FAULT



+1000^m

31°04'

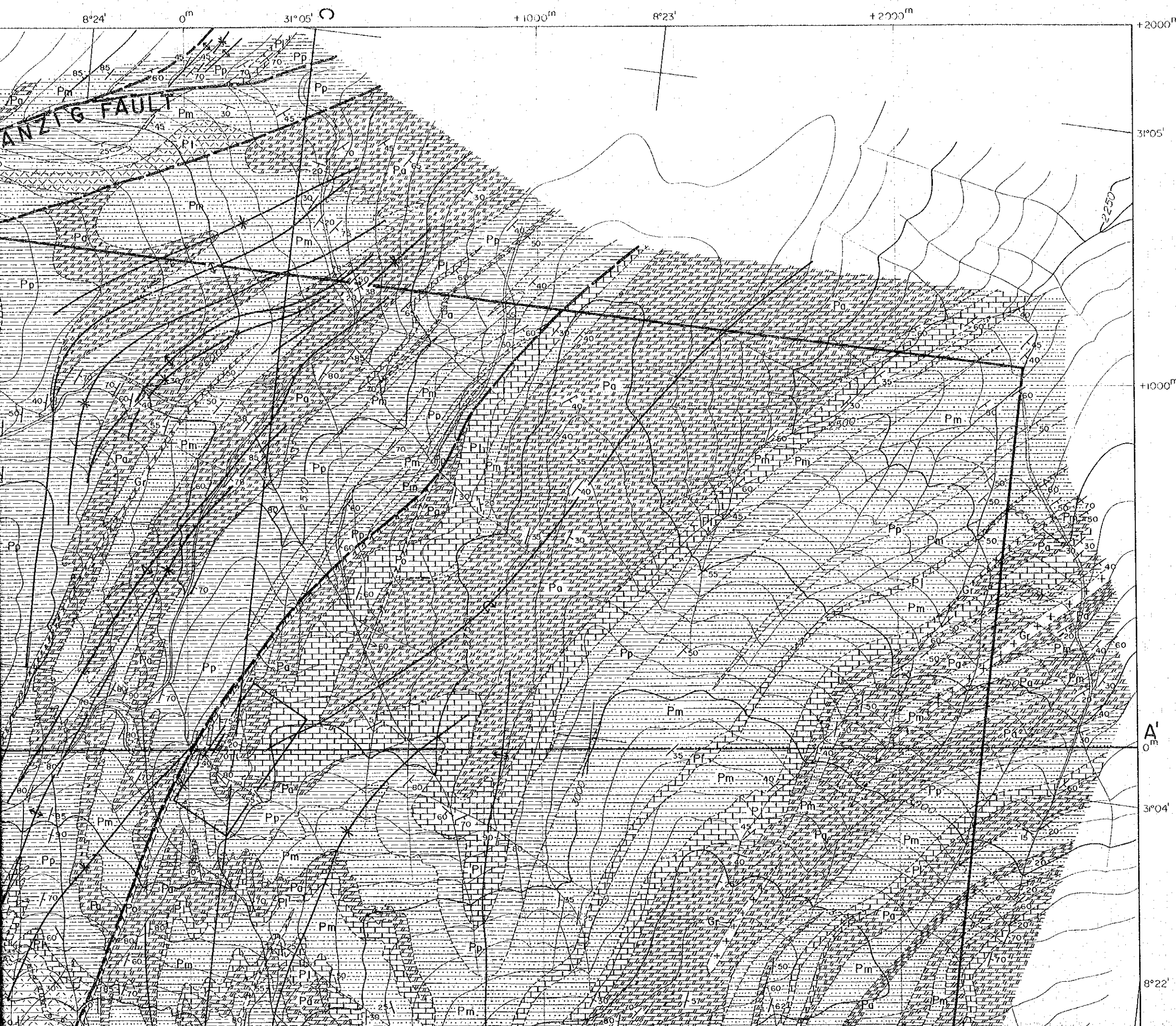
A₀^m

+1000^m

31°05'

A'₀^m

8°22'

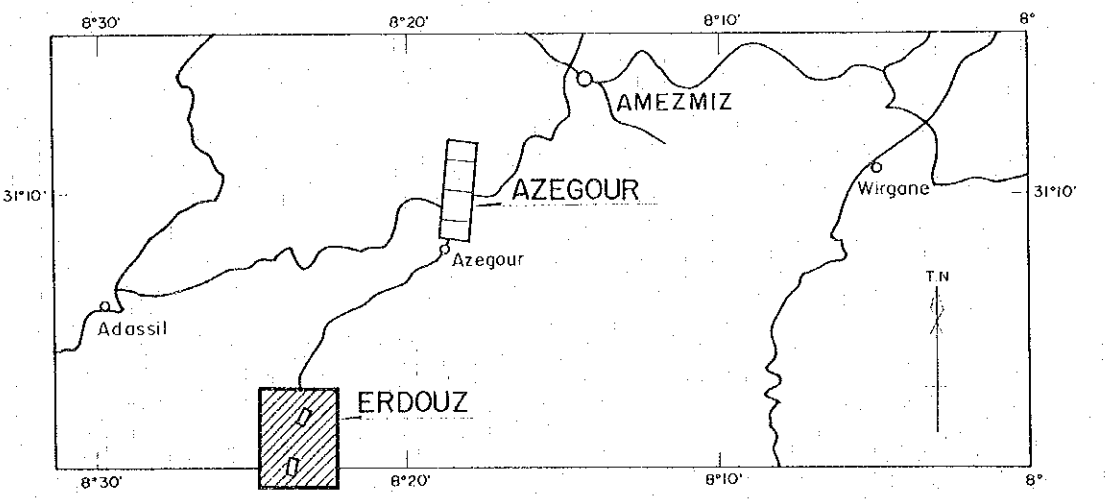


PL. 3

GEOLOGICAL SURVEY
OF
HAUT ATLAS OCCIDENTAL AREA, MOROCCO
(PHASE I)

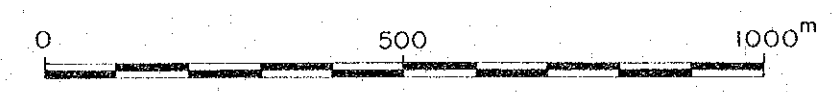
GEOLOGICAL MAP OF
ERDOUZ SECTOR

国際協力事業団
11636
図書資料室蔵書



JAPAN INTERNATIONAL COOPERATION AGENCY
METAL MINING AGENCY OF JAPAN
JANUARY 1984
Prepared by MINDECO

Scale 1 : 10,000



31°04'
A₀^m

8°25'
-1000^m

31°03'

-2000^m

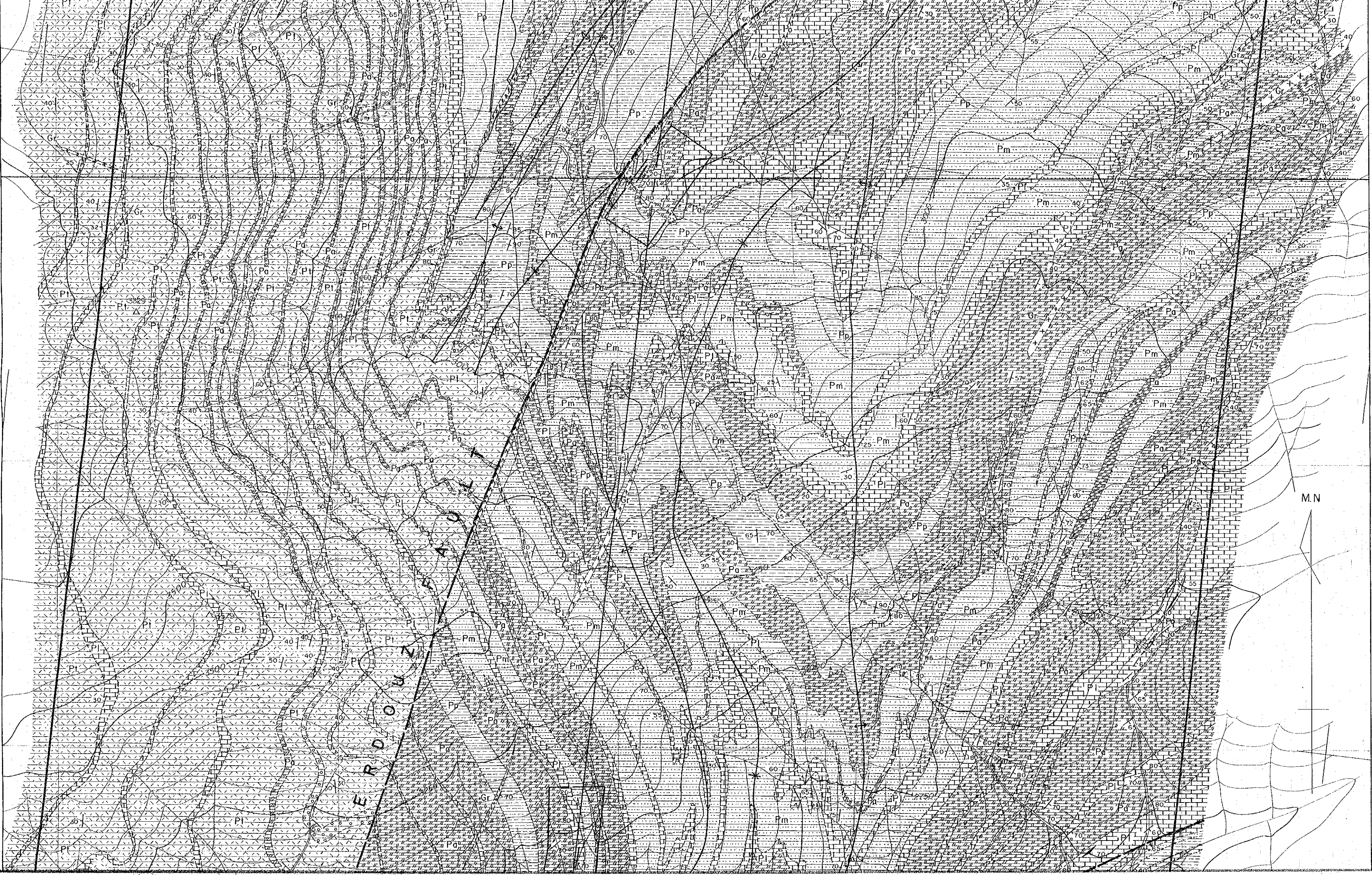
A'₀^m

31°04'

8°22'

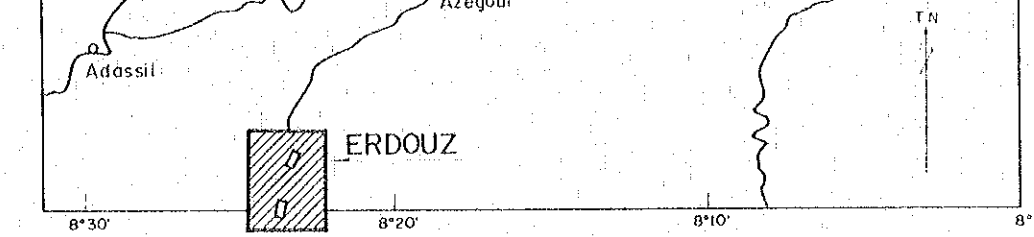
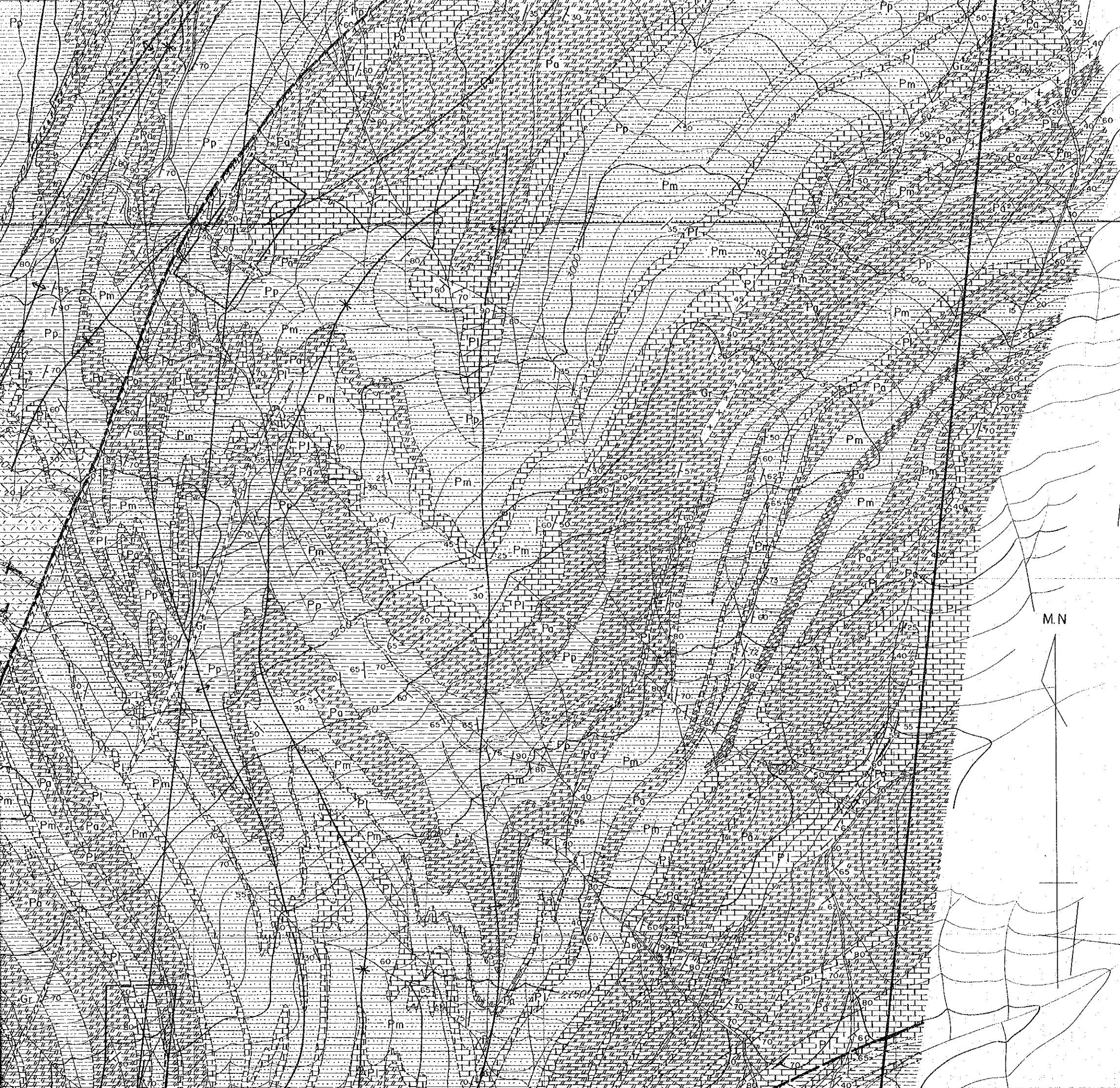
-1000^m

-2000^m
31°03'

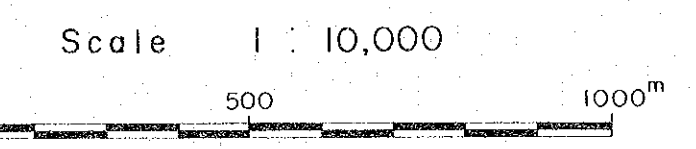


ERDOUZI

M.N.

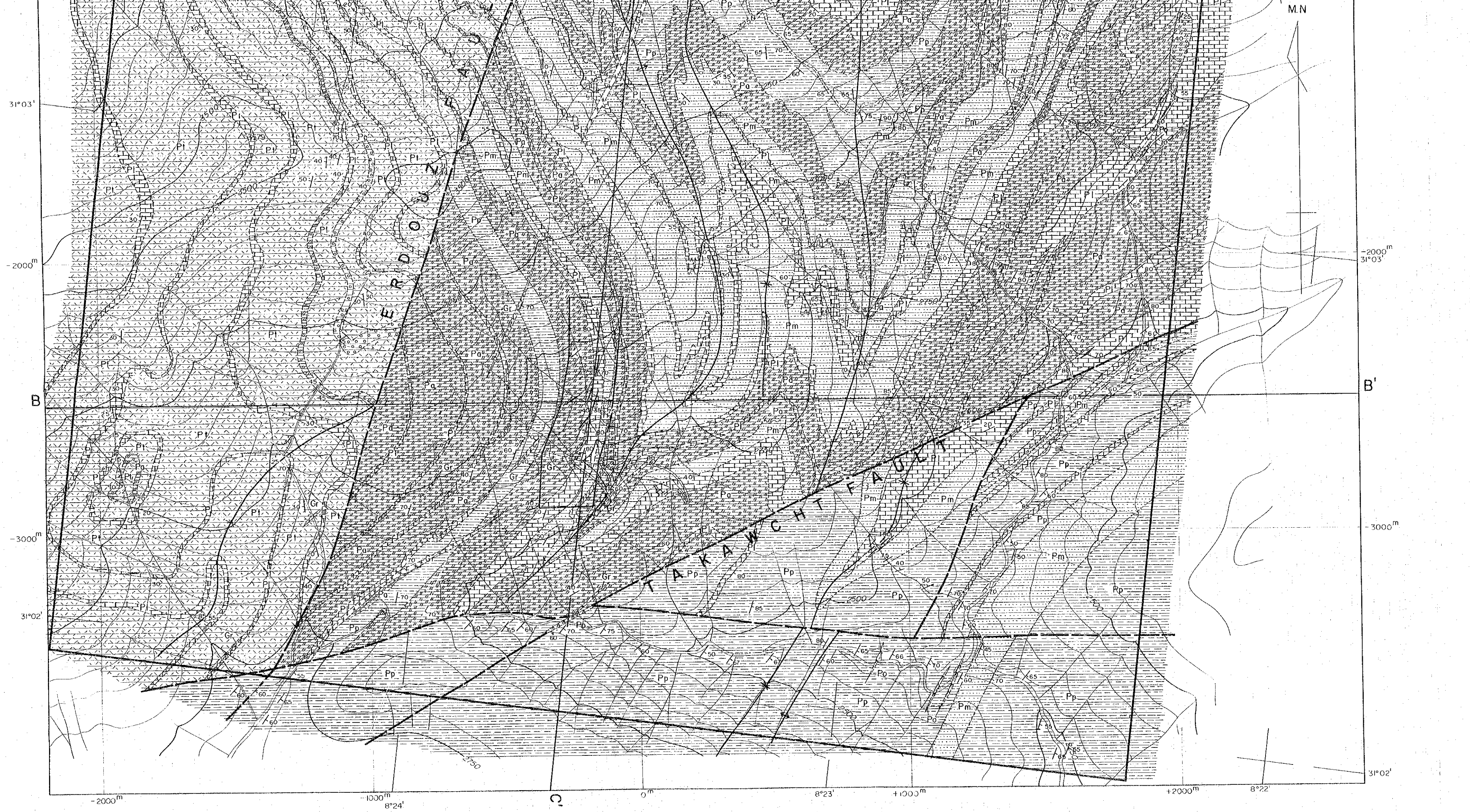


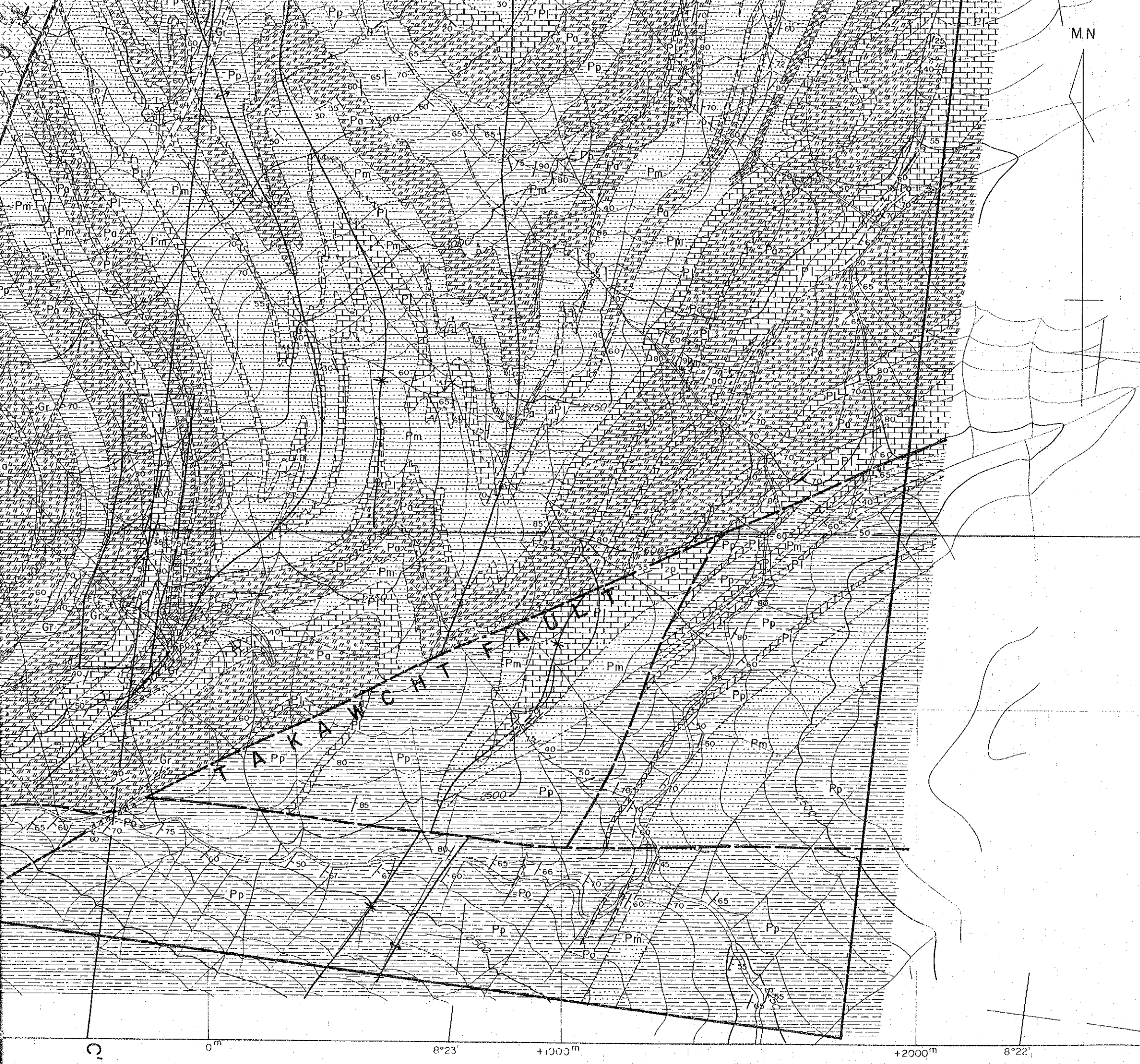
JAPAN INTERNATIONAL COOPERATION AGENCY
 METAL MINING AGENCY OF JAPAN
 JANUARY 1984
 Prepared by MINDECO



LEGEND

- | | | |
|----------------|--|---------------------------------------|
| Cambrian | | Pt green schist (tuff & tuff breccia) |
| | | Pc conglomerate |
| | | Pp pelitic schist |
| | | Pm psammitic schist |
| | | Pa calcareous schist |
| | | Pl limestone |
| Intrusive rock | | Gr granite |
| | | Po porphyrite |
| | | vein |

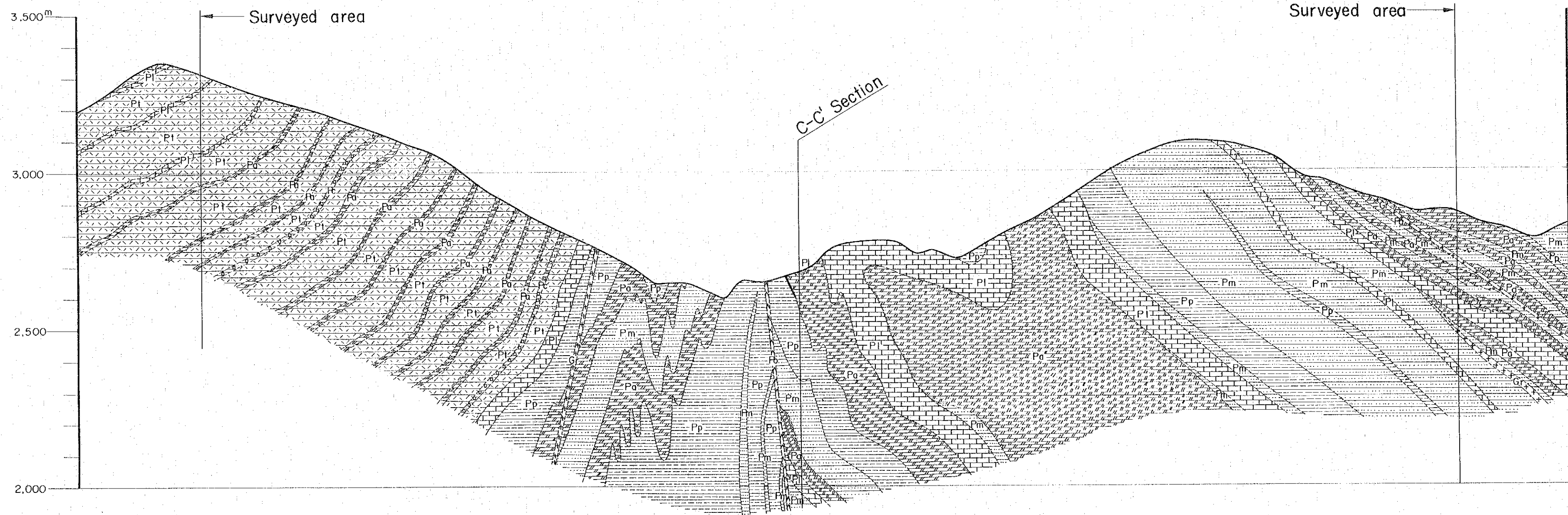




LEGEND

- | | |
|----------------|--|
| | Pt green schist (tuff & tuff breccia) |
| | Pc conglomerate |
| | Pp pelitic schist |
| | Pm psammitic schist |
| | Pa calcareous schist |
| | Pl limestone |
| Cambrian | |
| | Gr granite |
| Intrusive rock | |
| | Po porphyrite |
| | vein |
| | fault |
| | anticlinal axis / synclinal axis / overturned fold |
| | bedding plane |

A ~ A' Section



B ~ B' Section