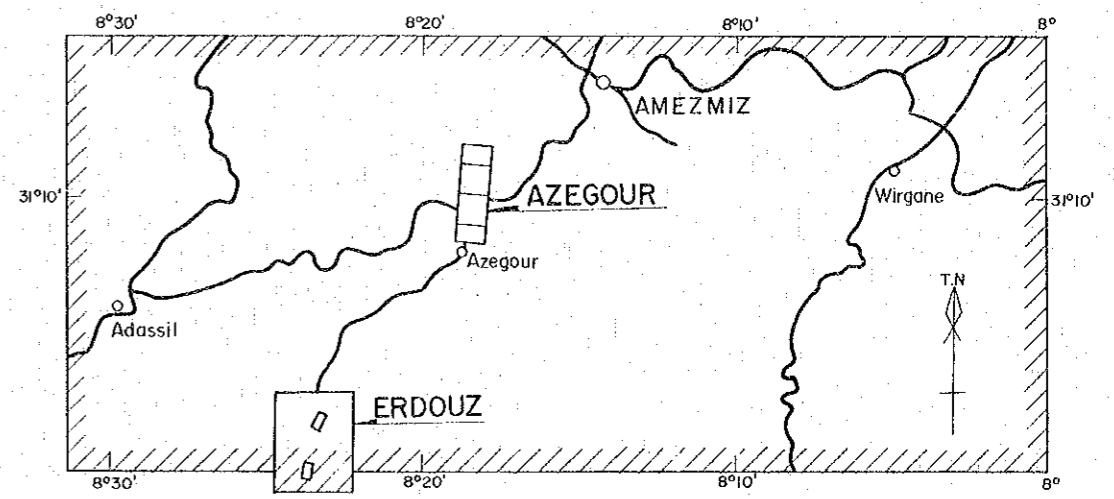


GEOLOGICAL SURVEY
OF
HAUT ATLAS OCCIDENTAL AREA, MOROCCO
(PHASE I)

GEOLOGICAL MAP OF
NORTHERN AREA

国際協力事業団
11636
図書資料室蔵書



JAPAN INTERNATIONAL COOPERATION AGENCY
METAL MINING AGENCY OF JAPAN

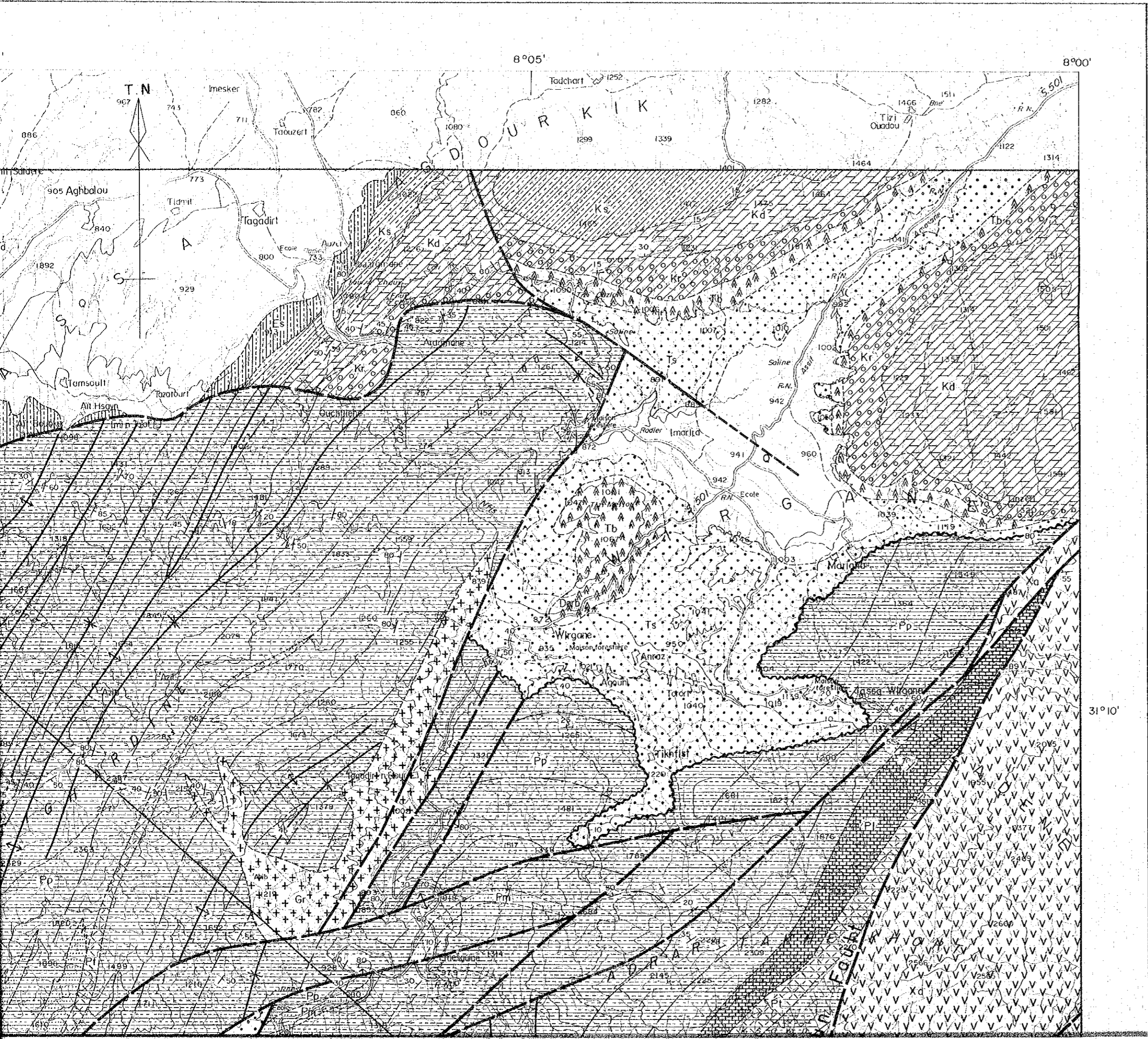
JANUARY 1984

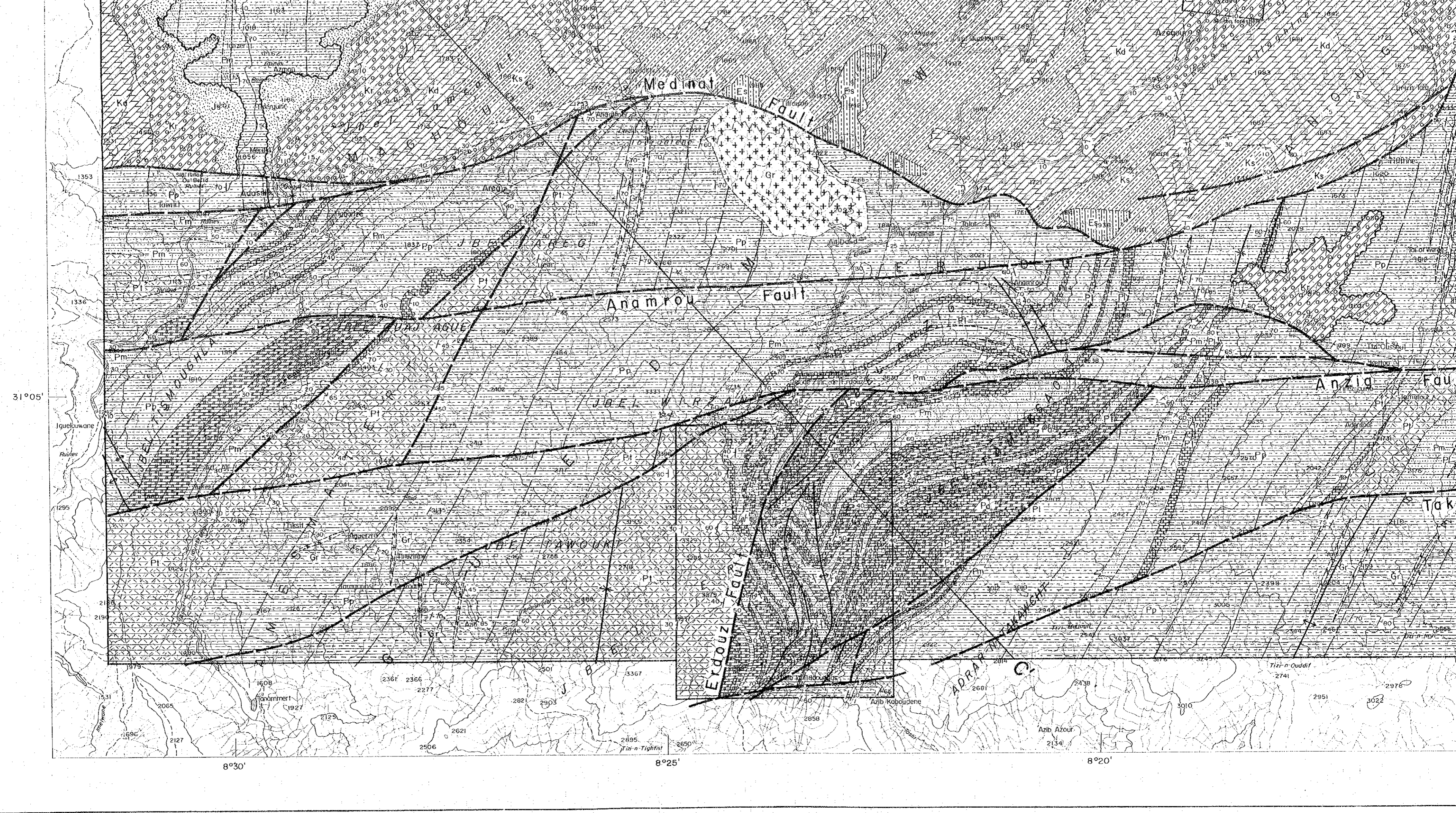
Prepared by MINDECO

Scale 1 : 50,000



LEGEND





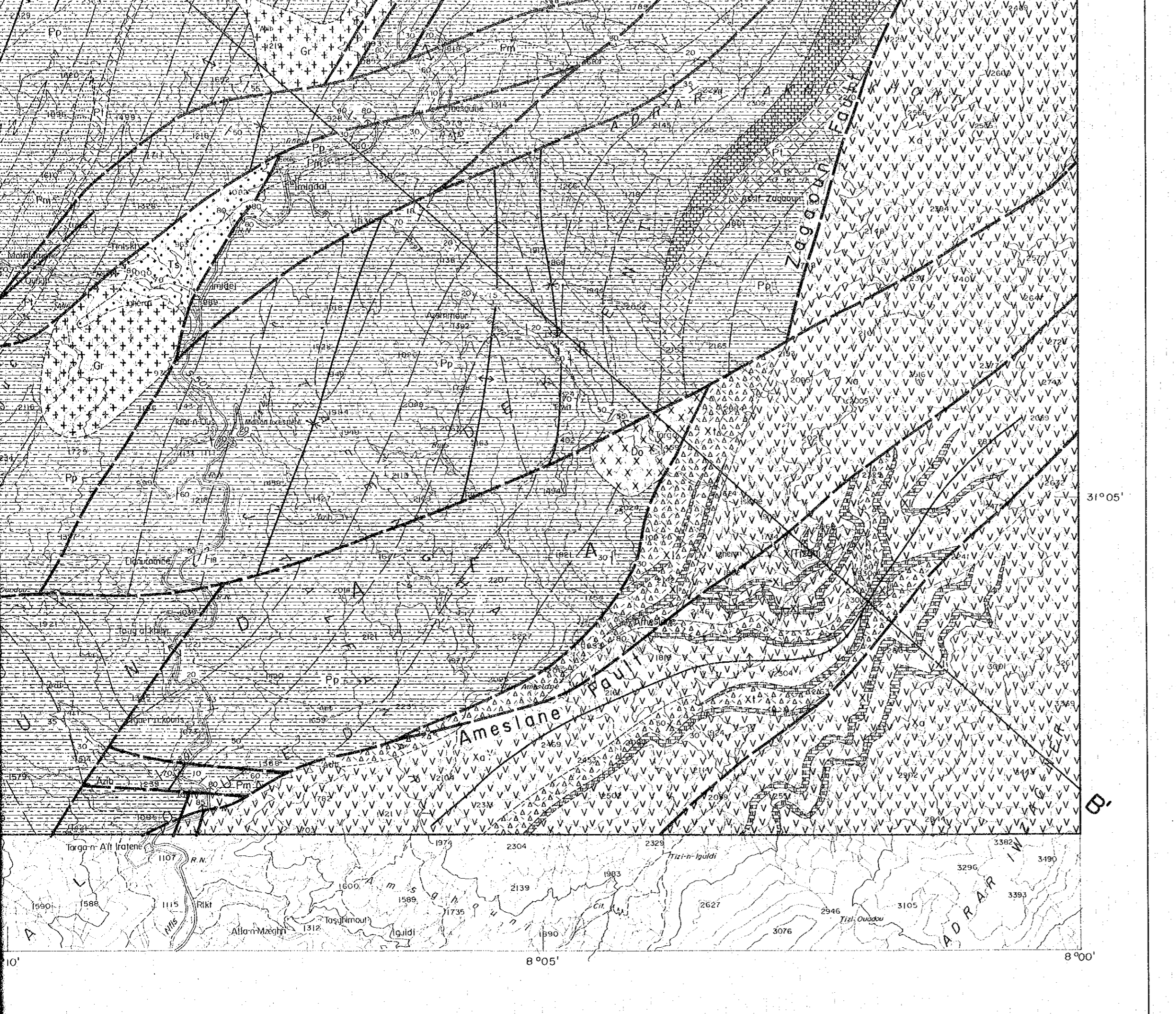


8°20'

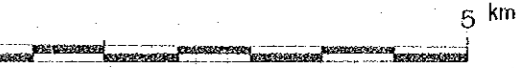
8°15'

8°10'

8°05'



Scale 1 : 50,000



LEGEND

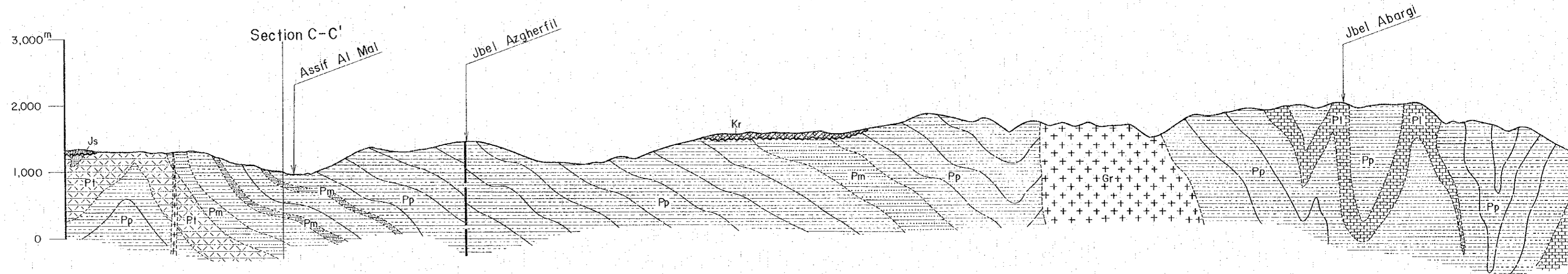
- | | | | |
|----------------|-------|----|---|
| Quaternary | □ | Q | sand , gravel , travertine |
| Tertiary | ▨ | Es | sandstone |
| Cretaceous | ▩ | Ks | sandstone , siltstone |
| | ▧ | Kd | dolomite , siltstone , sandstone |
| | ▦ | Kr | red sandstone |
| Jurassic | ▤ | Js | sandstone , siltstone |
| Triassic | ▲▲▲ | Tb | basalt |
| | ●●● | Ts | sandstone , siltstone |
| Palaeozoic | ▨ | Pp | pelitic schist |
| | ▩ | Pm | psammitic schist |
| | ▧ | Pt | green schist (tuff, tuff breccia) |
| | ▦ | Pl | limestone |
| | ▩ | Pa | calcareous schist |
| | ▤ | Xa | andesite |
| | ▦ | Xl | limestone |
| Pre - Cambrian | ▧ | Xt | tuff , tuff breccia, lapilli tuff |
| Intrusive rock | ++++ | Gr | granite , diorite |
| | ▲▲▲ | Po | porphyrite |
| | ××× | Do | dolerite |
| | --- | | fault |
| | ~~~~~ | | unconformity |
| | /// | | anticlinal / synclinal axis / overturned fold |
| | ~~~~~ | | stratigraphic boundary |
| | ↘ | | bedding plane |

31°05'

8°00'

8°05'

A - A'



B - B'

