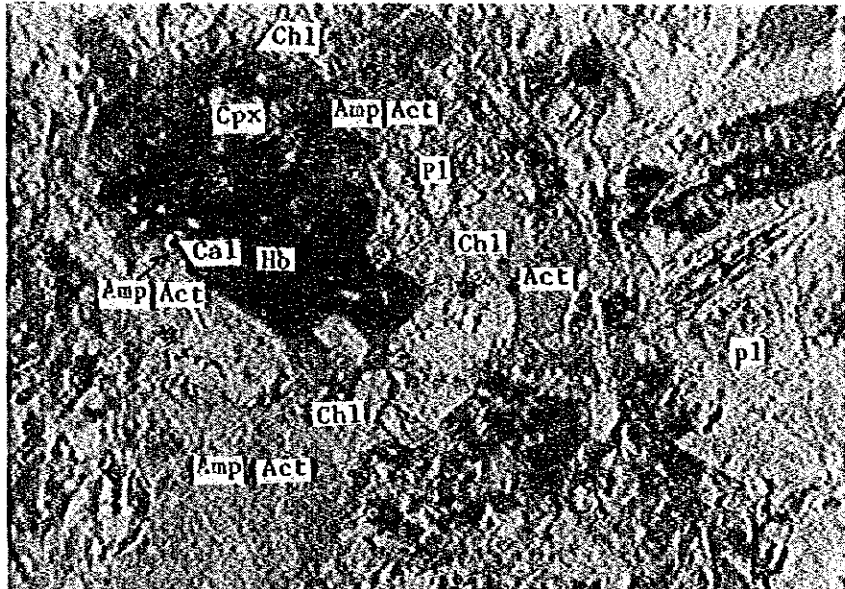
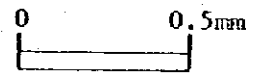


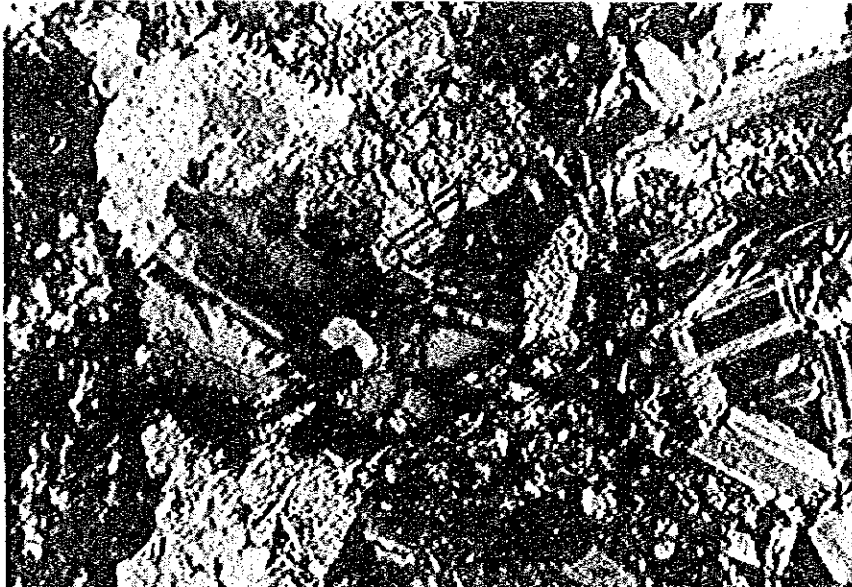
(3) GR-17



open nicol



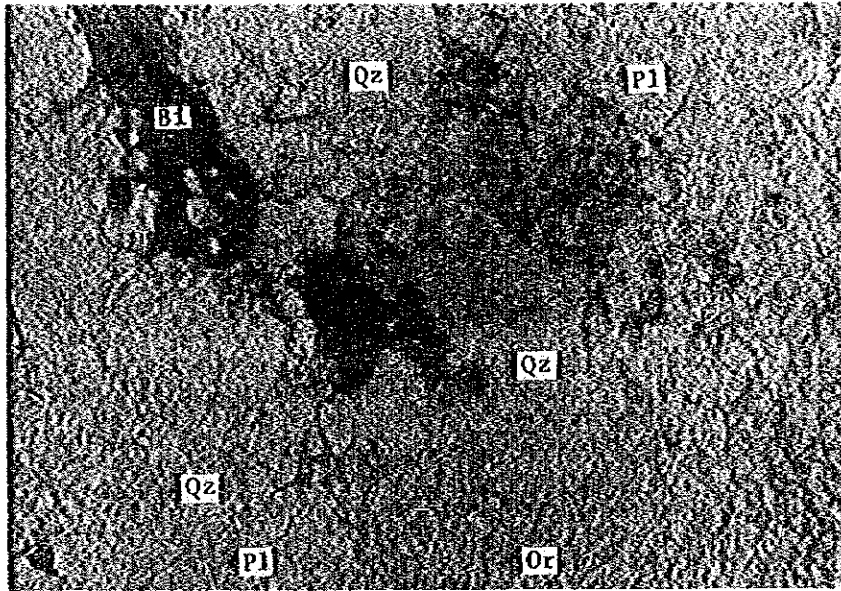
(4) GR-17



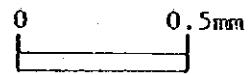
crossed nicols



(5) GR-19



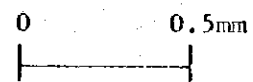
open nicol



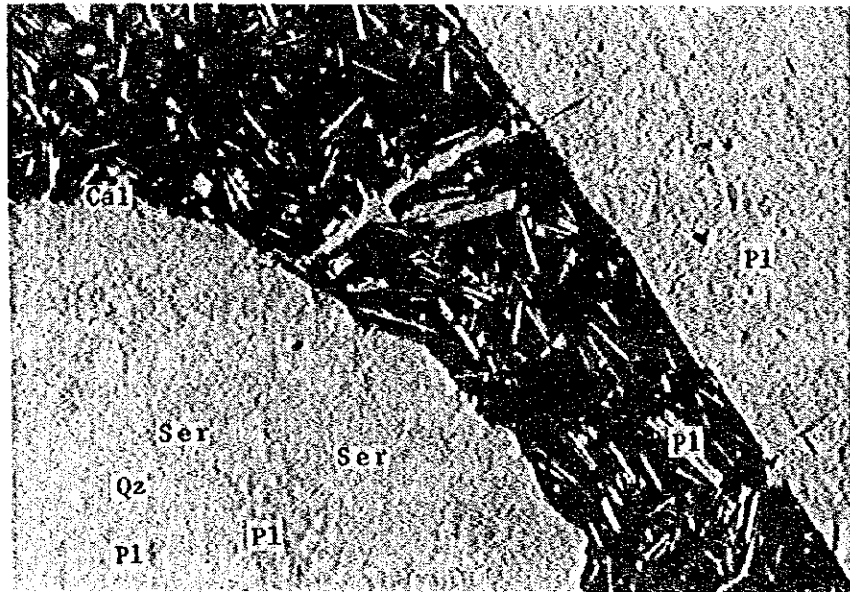
(6) GR-19



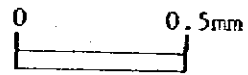
crossed nicols



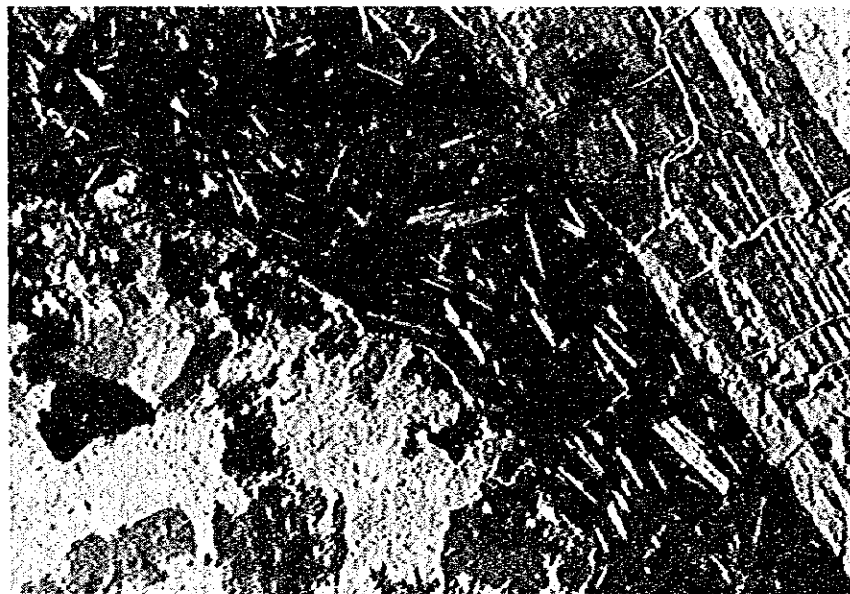
(7) GR-76



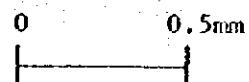
open nicol



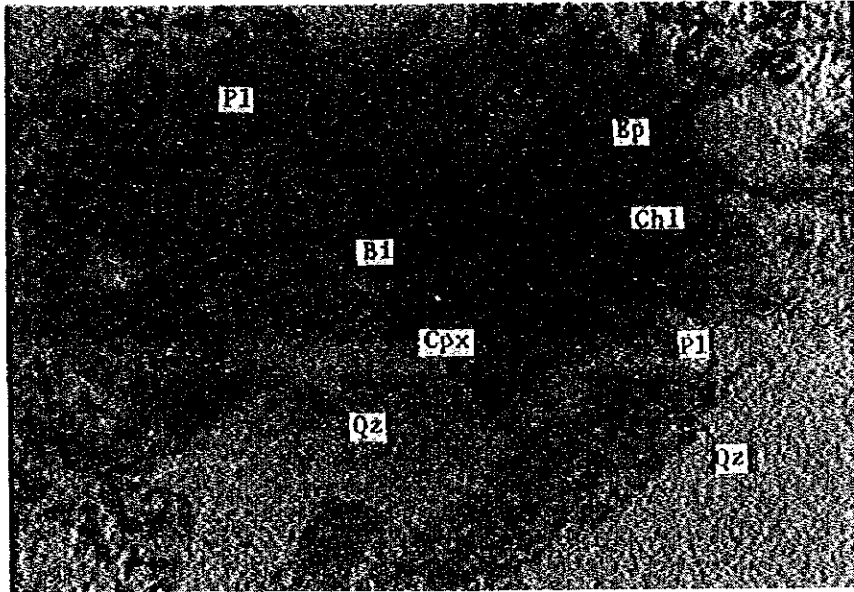
(8) GR-76



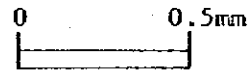
crossed nicols



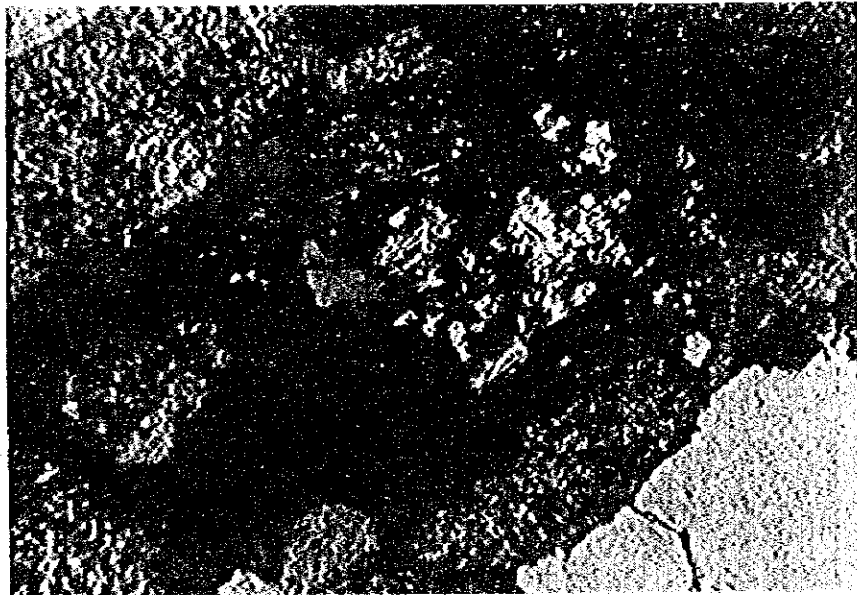
(9) GK-21



open nicol



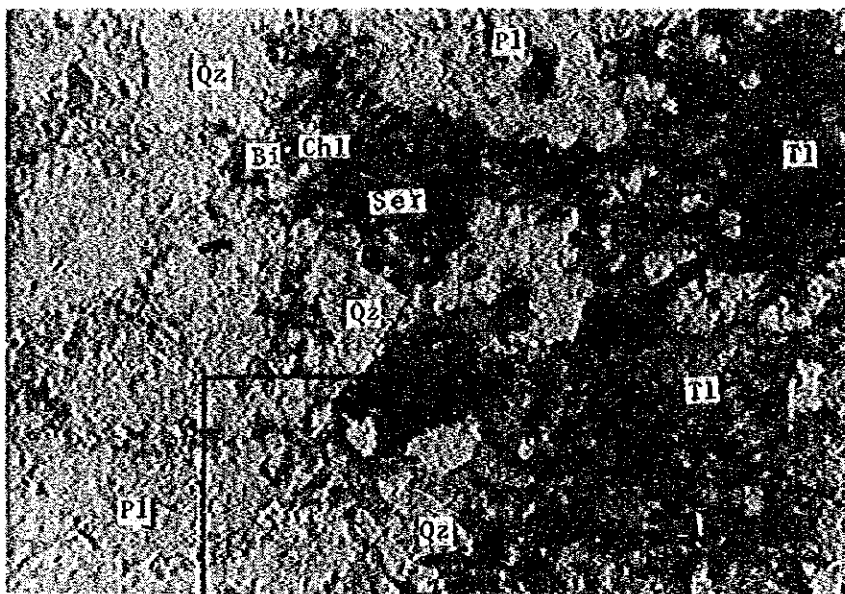
(10) GK-21



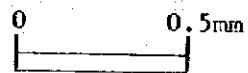
crossed nicols



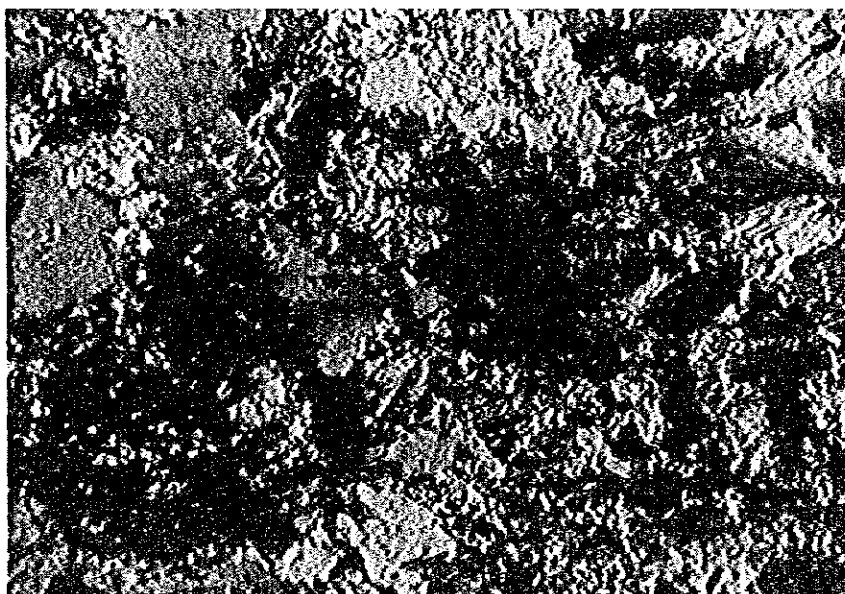
(11) GK-105



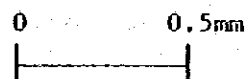
open nicol



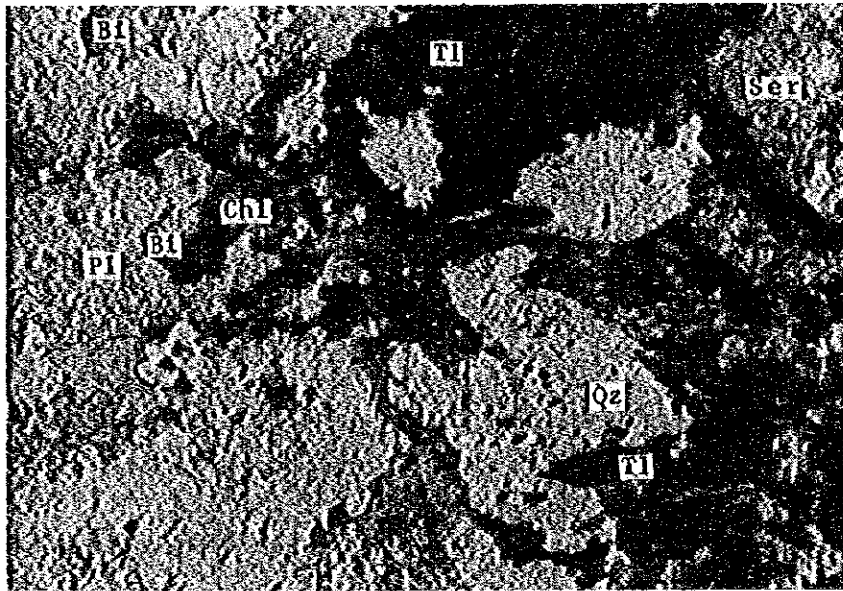
(12) GK-105



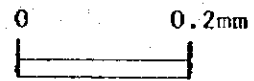
crossed nicols



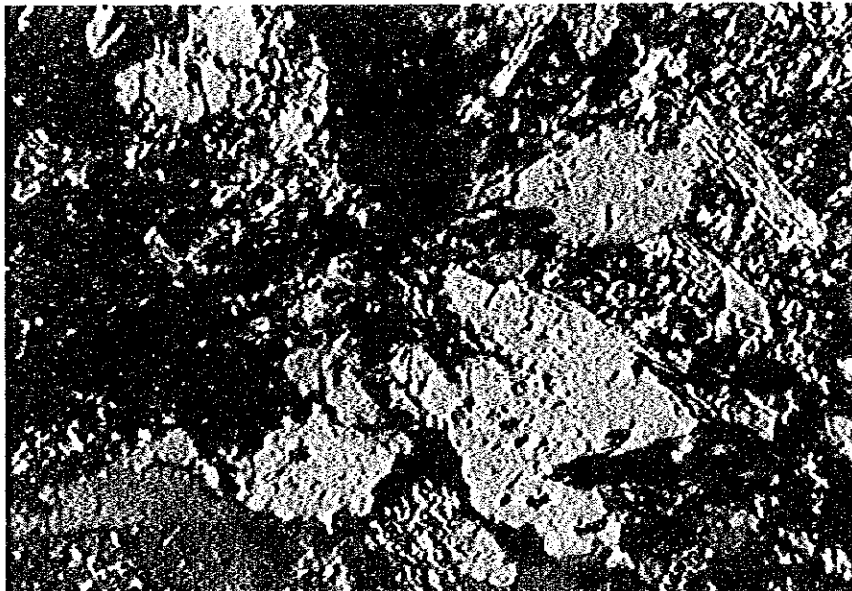
(13) GK-105



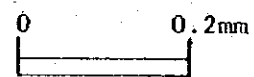
open nicol



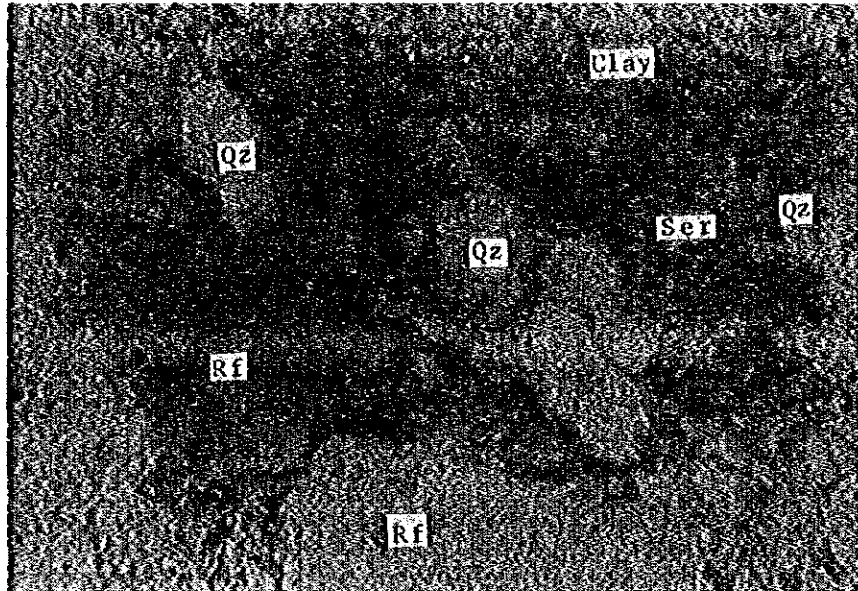
(14) GK-105



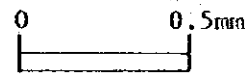
crossed nicols



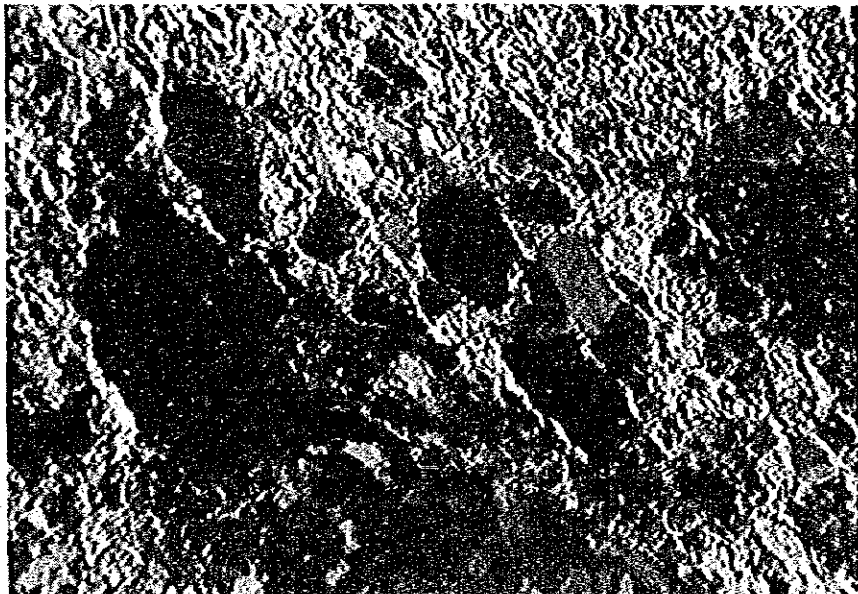
(15) GK-111



open nicol



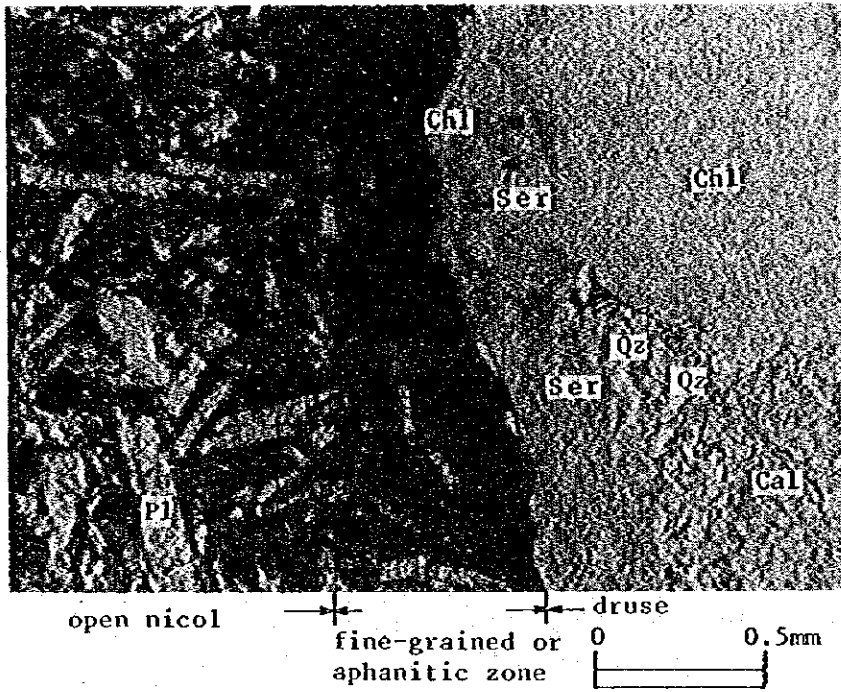
(16) GK-111



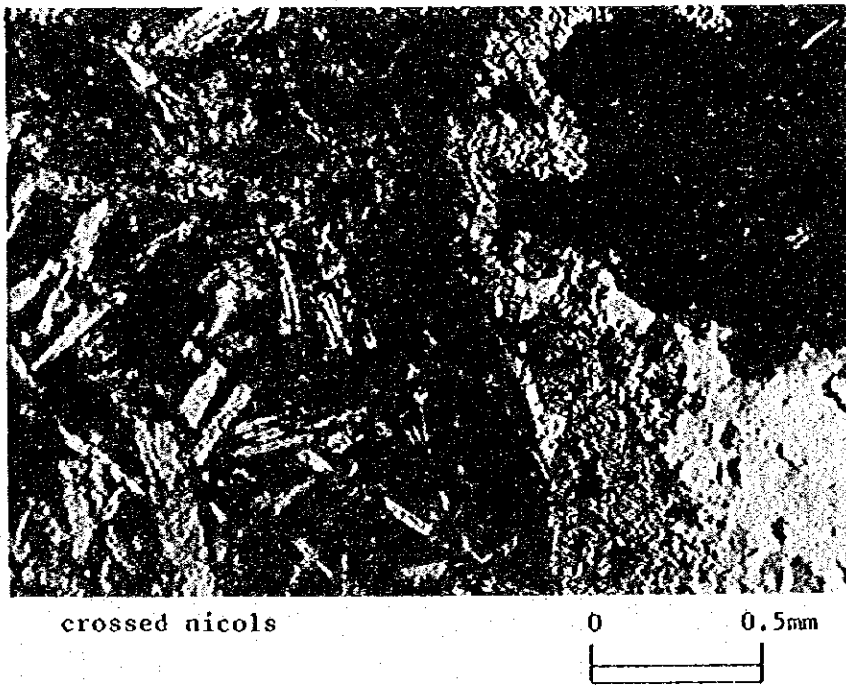
crossed nicols



(17) GK-114

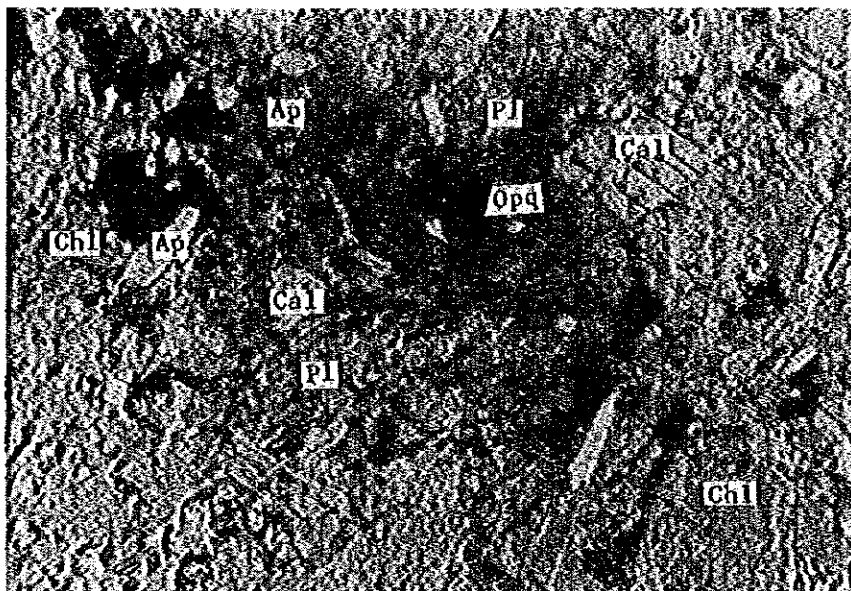


(18) GK-114

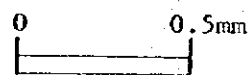




(19) GN-117



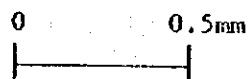
open nicol



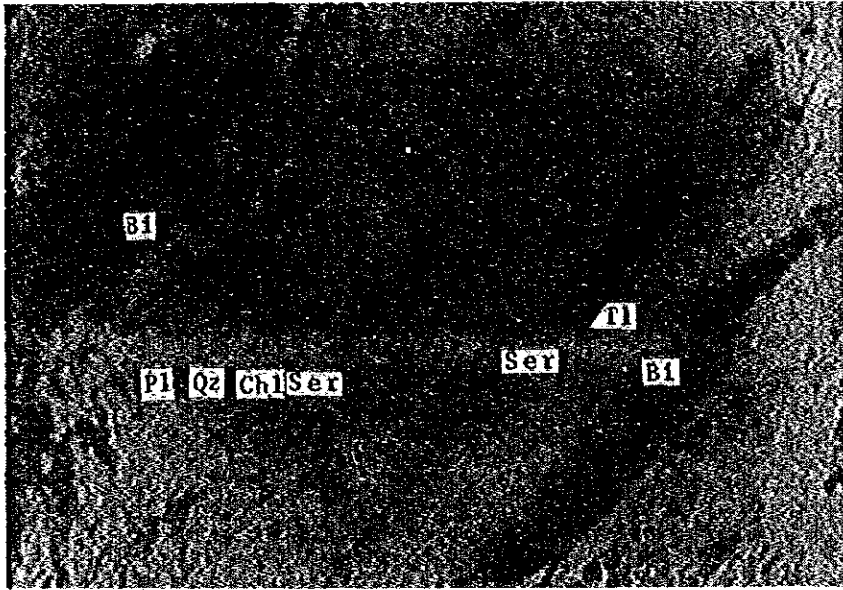
(20) GN-117



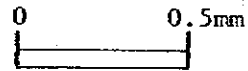
crossed nicols



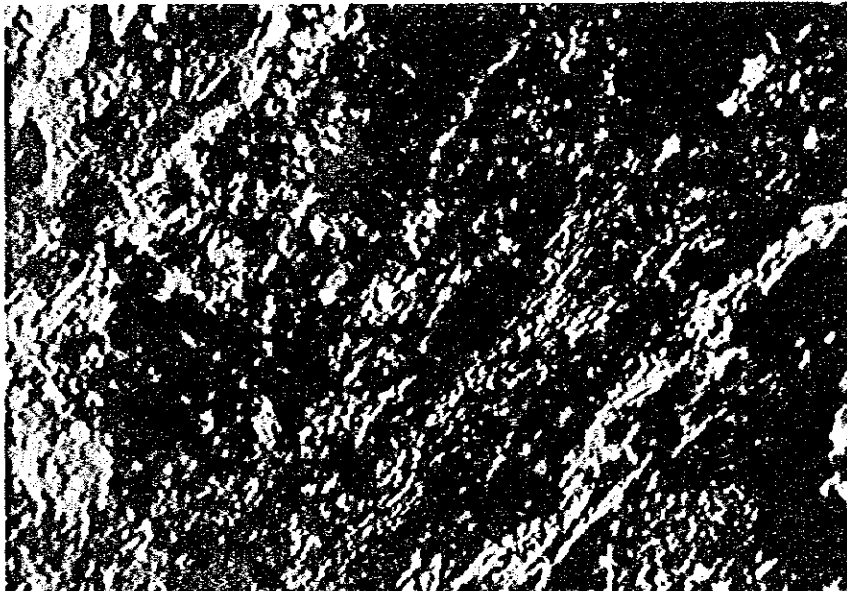
(21) GN-133



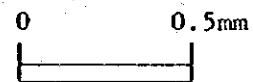
open nicol



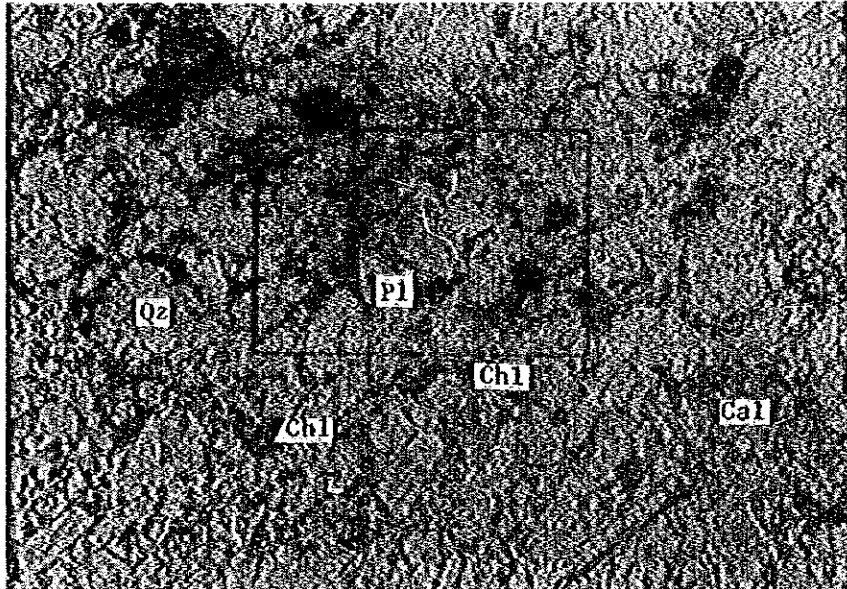
(22) GN-133



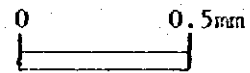
crossed nicols



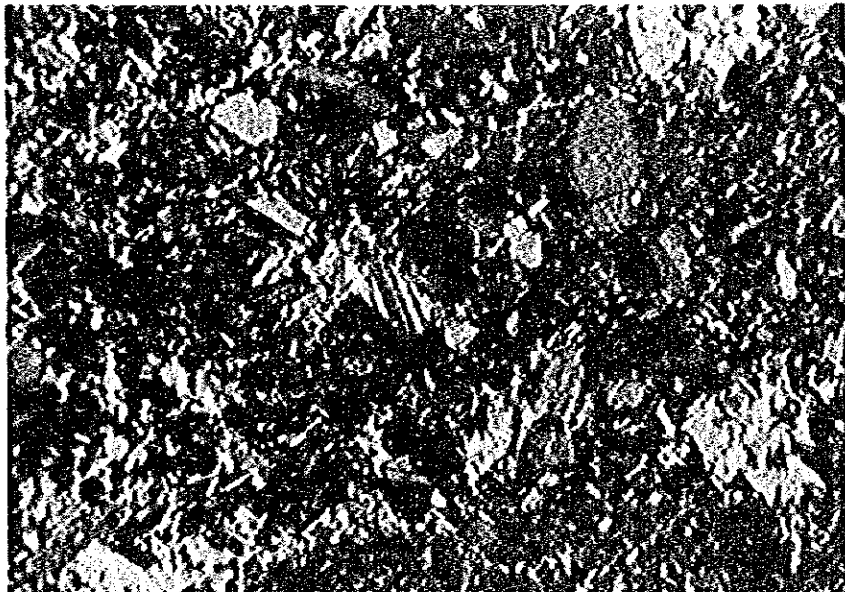
(23) GN-162



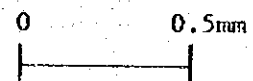
open nicol



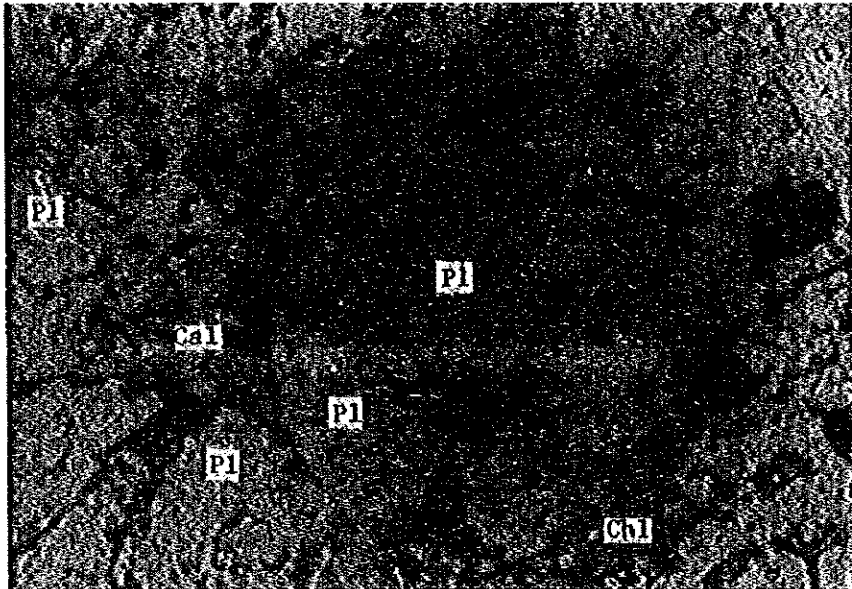
(24) GN-162



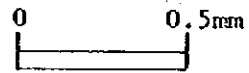
crossed nicols



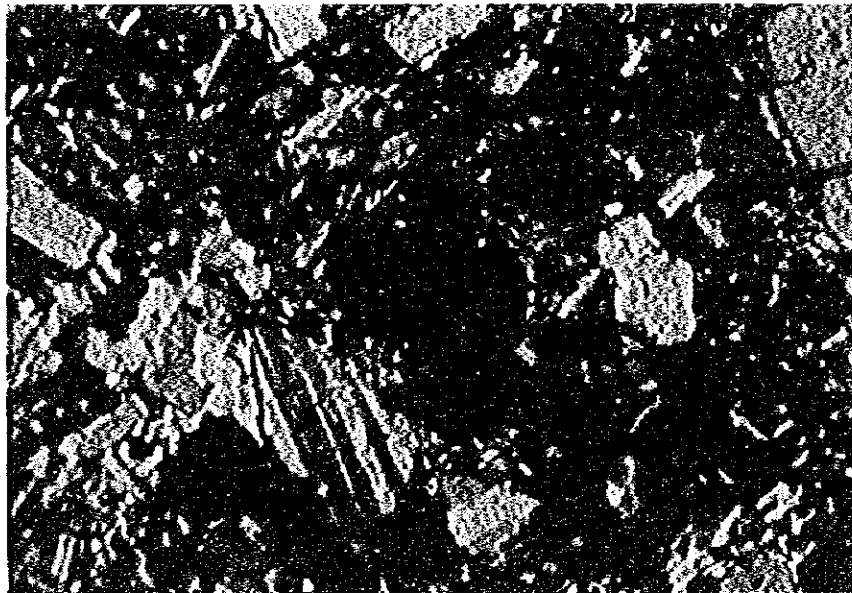
(25) GN-162



open nicol



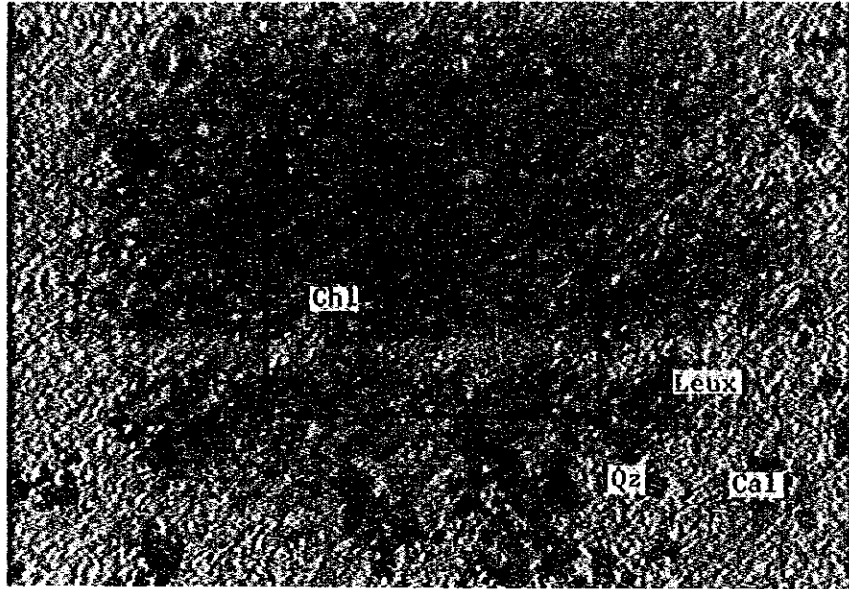
(26) GN-162



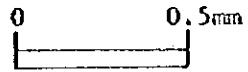
crossed nicols



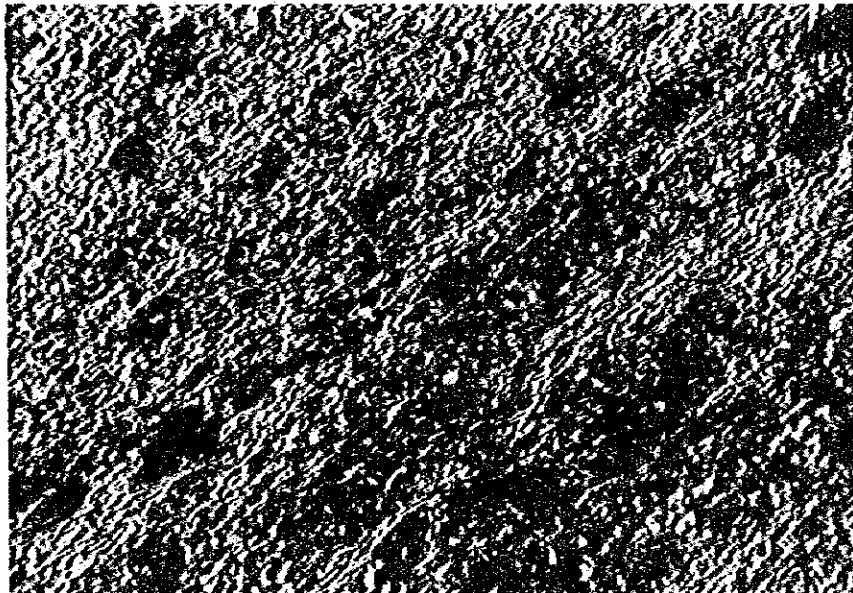
(27) GR-14



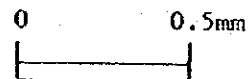
open nicol



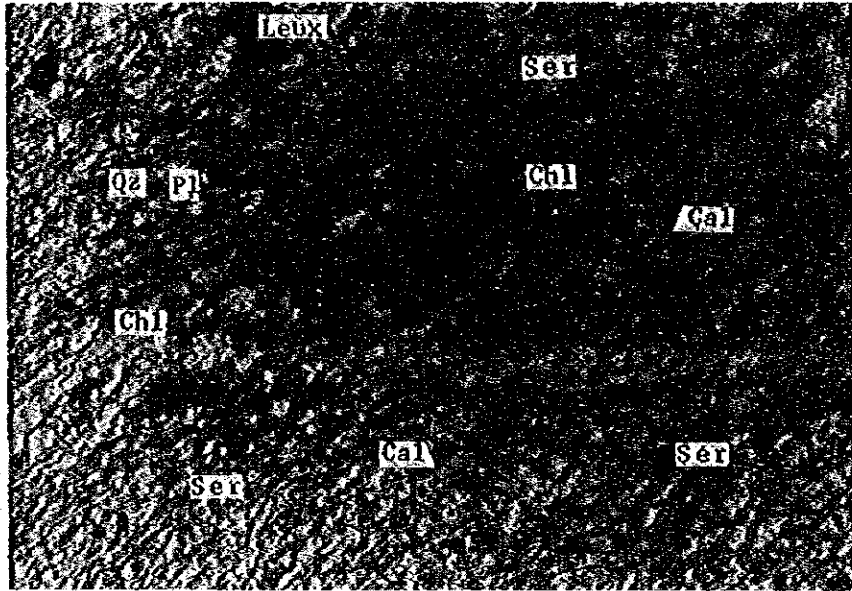
(28) GR-14



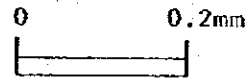
crossed nicols



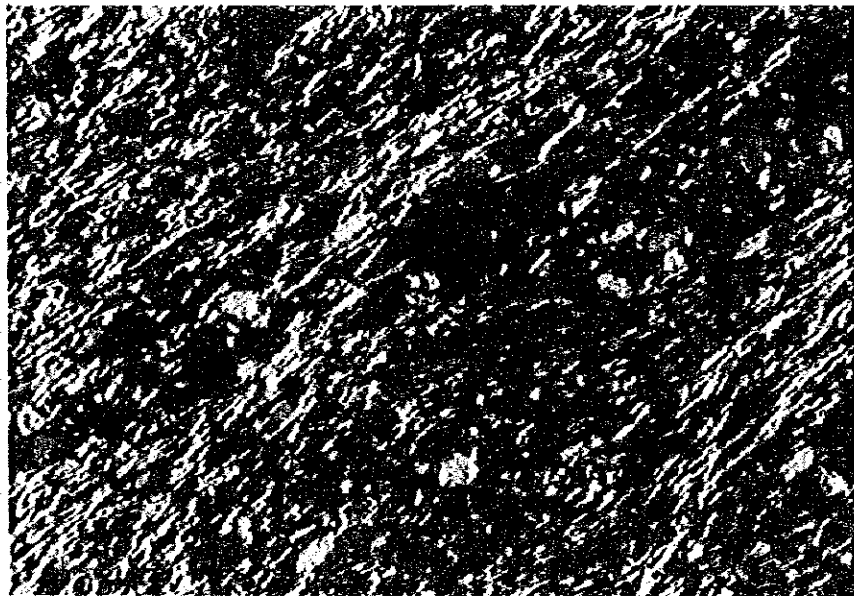
(29) GR-14



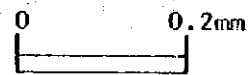
open nicol



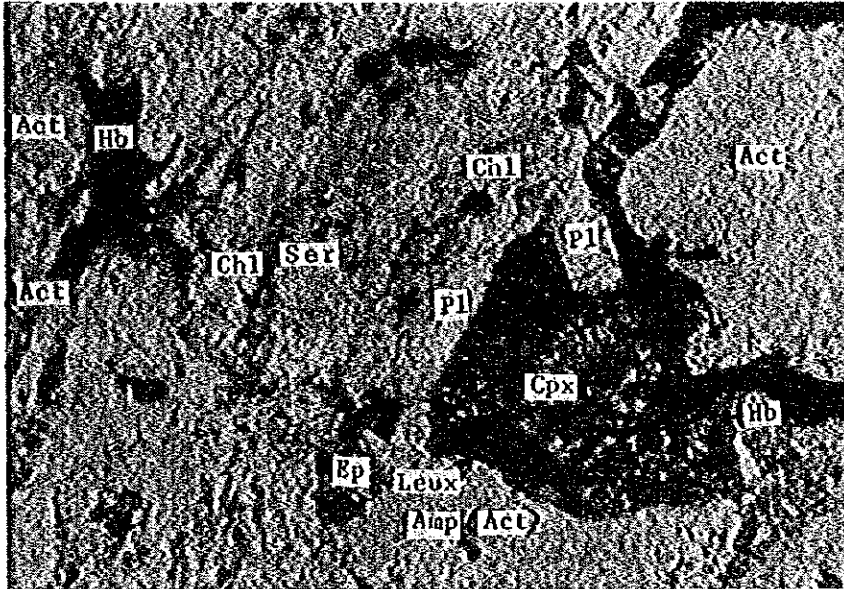
(30) GR-14



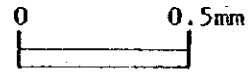
crossed nicols



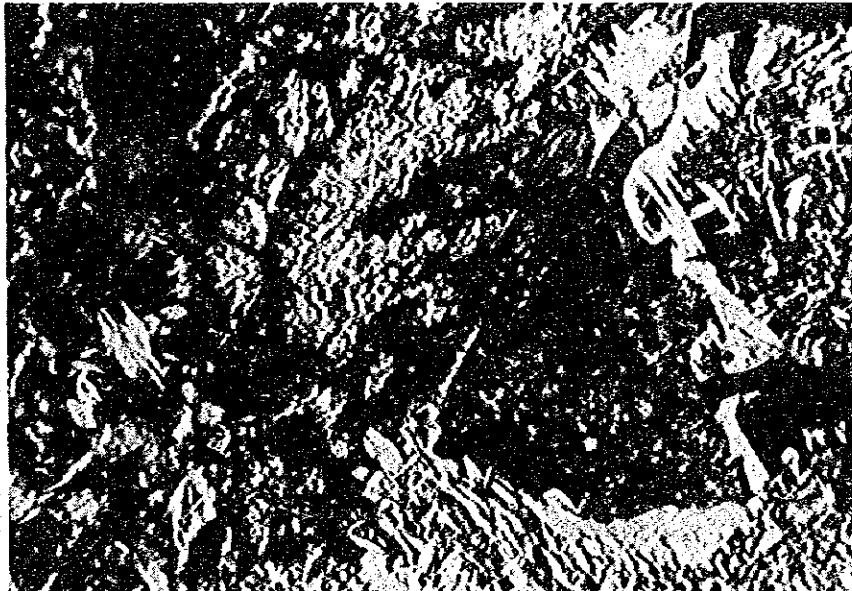
(31) GR-45



open nicol



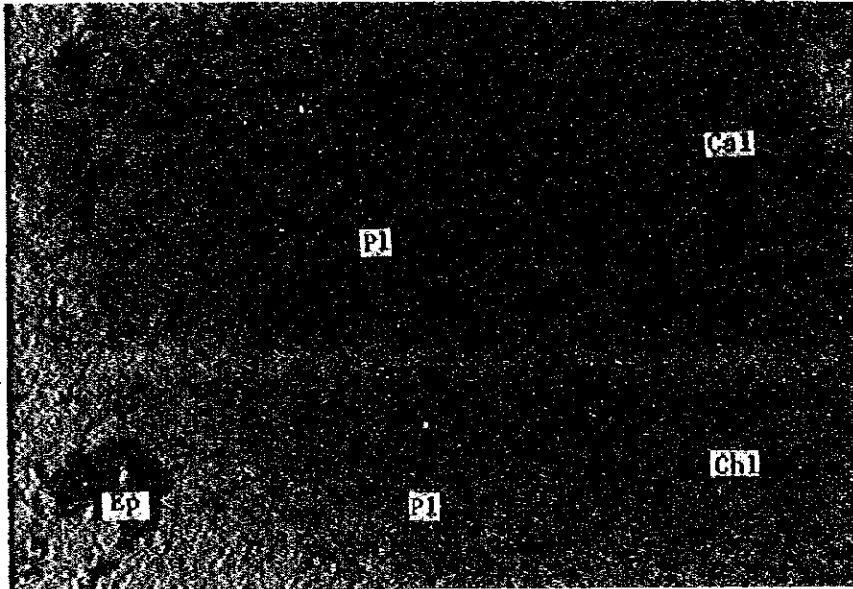
(32) GR-45



crossed nicols



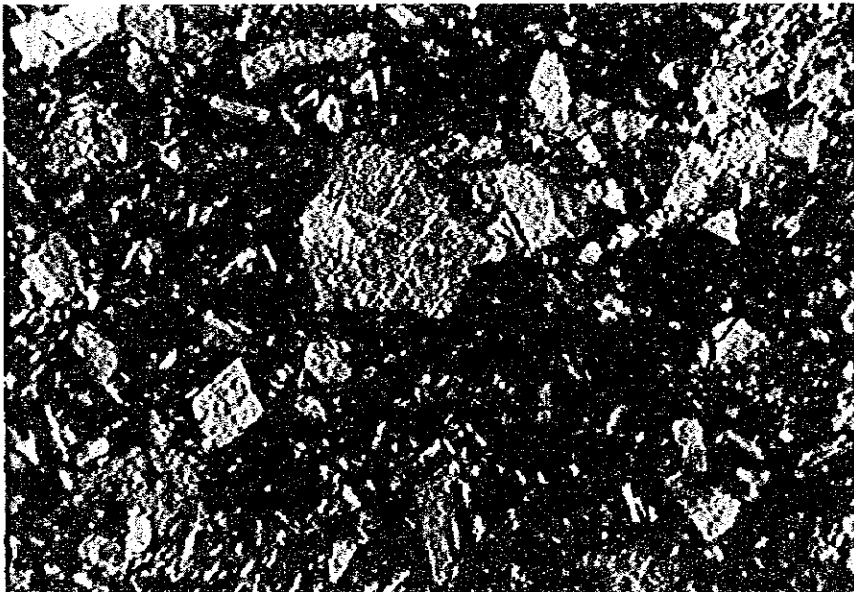
(33) GR-50



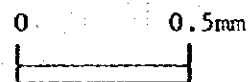
open nicol



(34) GR-50

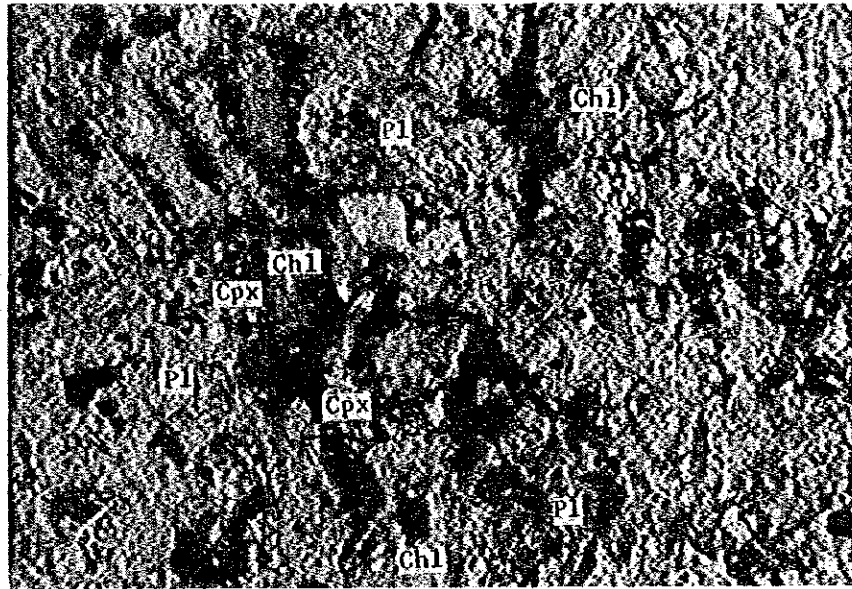


crossed nicols

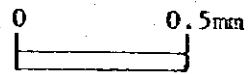




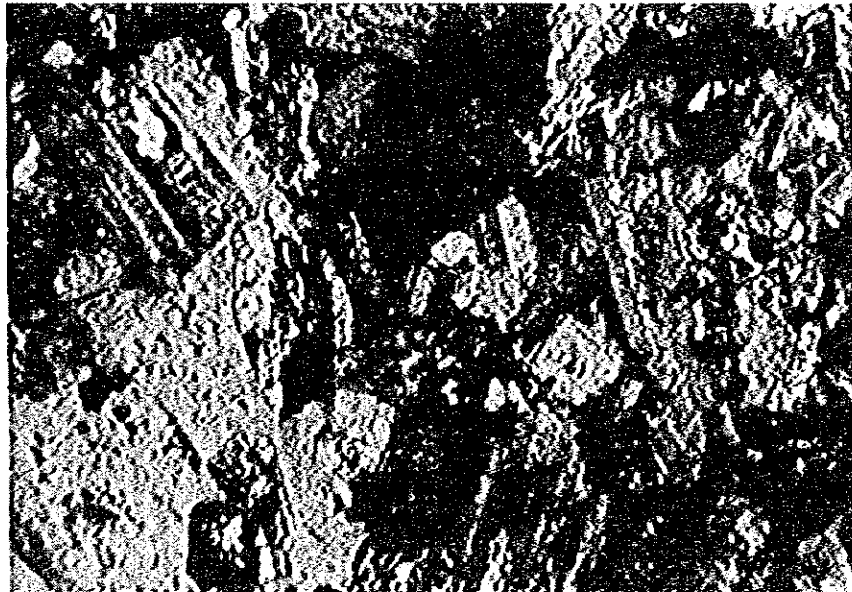
(35) GN-61



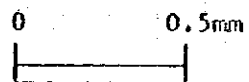
open nicol



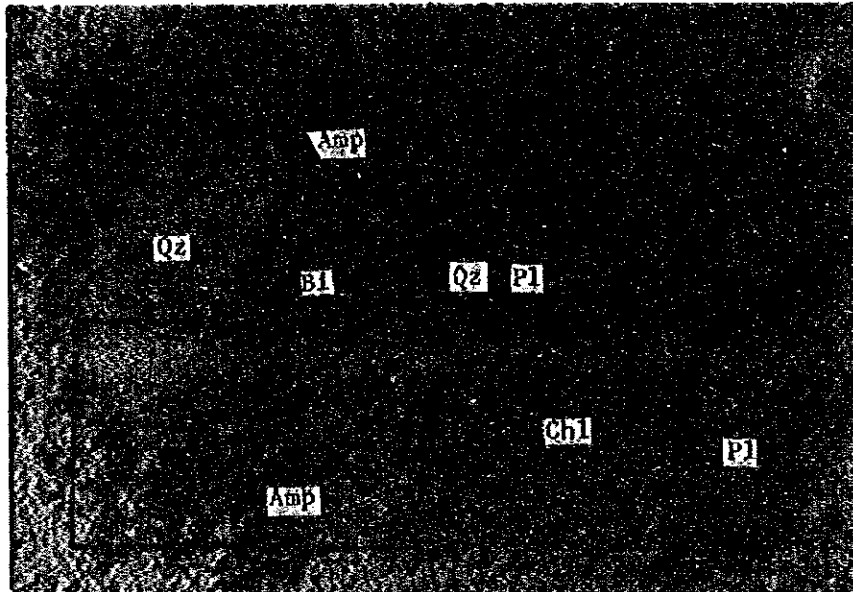
(36) GN-61



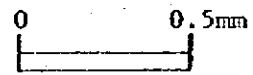
crossed nicols



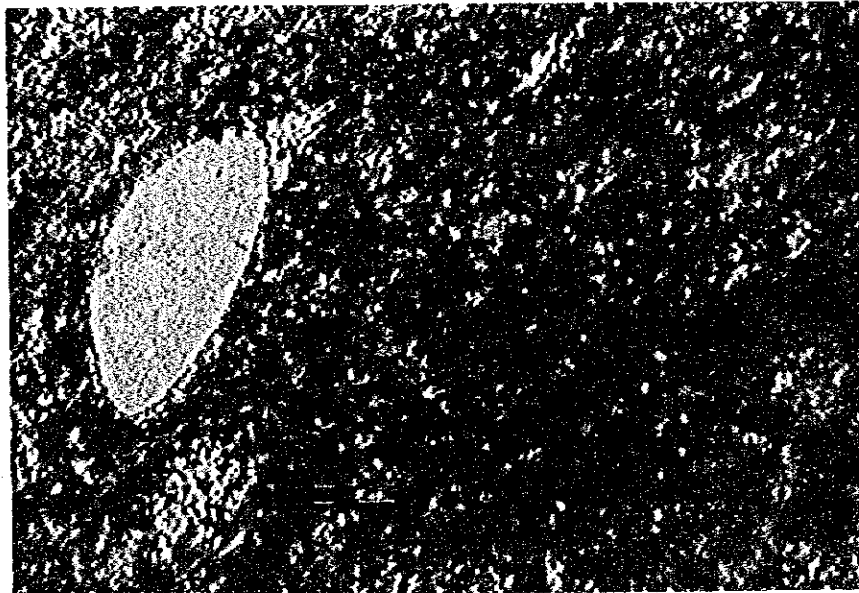
(37) GR-56



open nicol



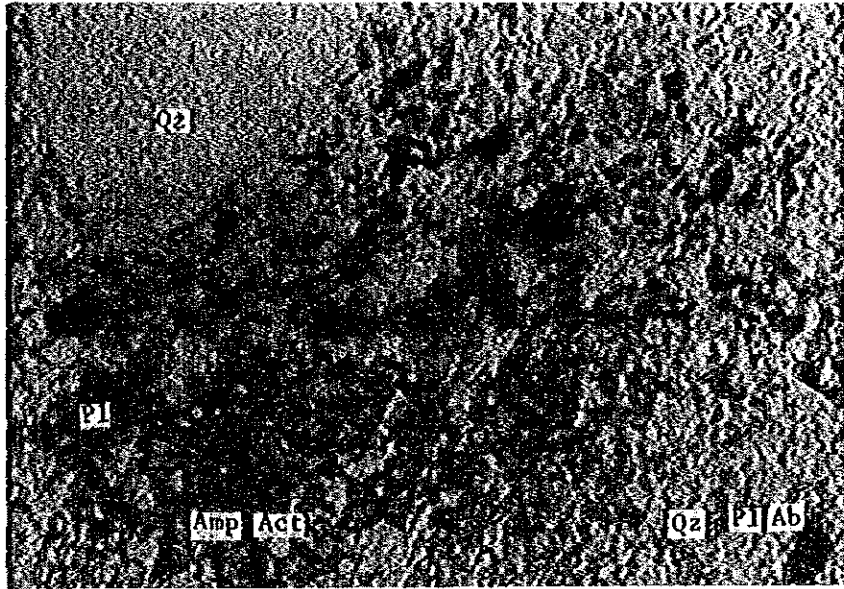
(38) GR-56



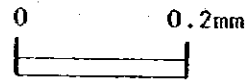
crossed nicols



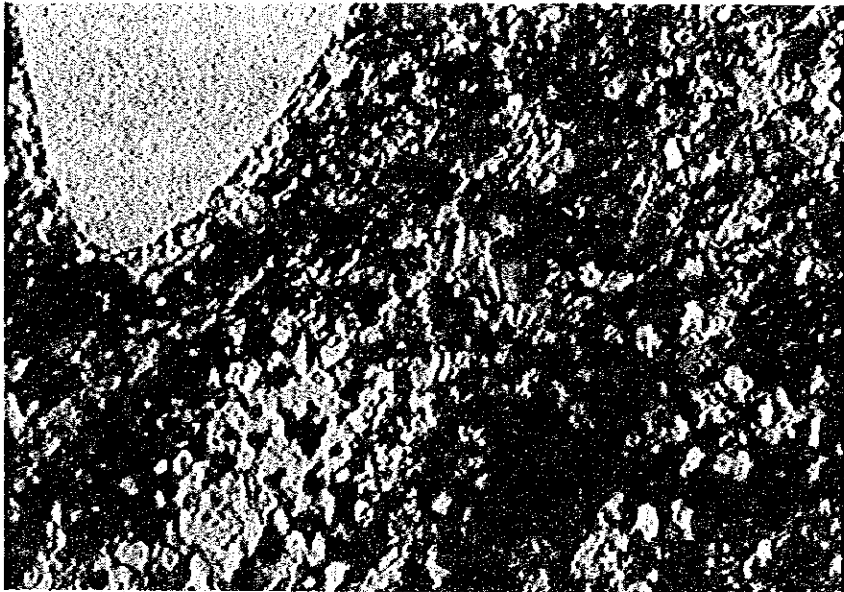
(39) GR-56



open nicol



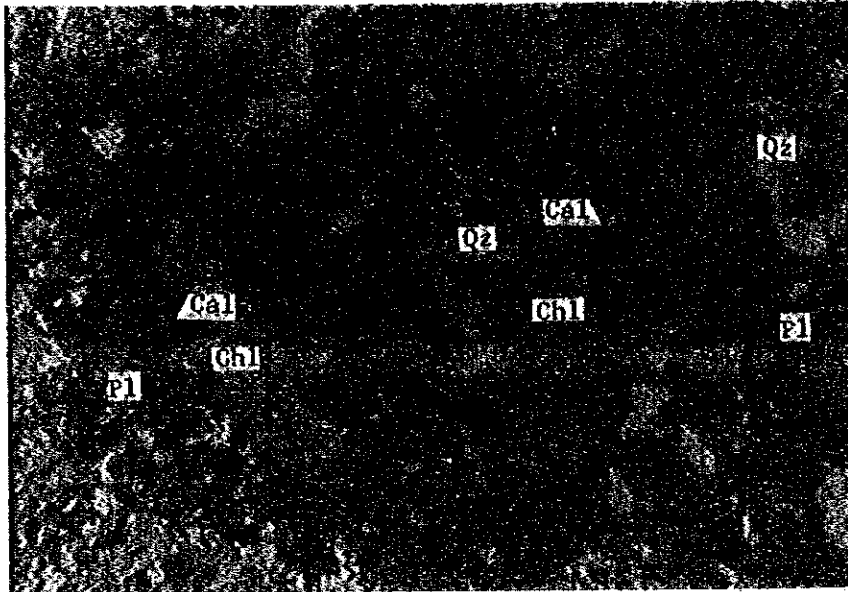
(40) GR-56



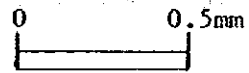
crossed nicols



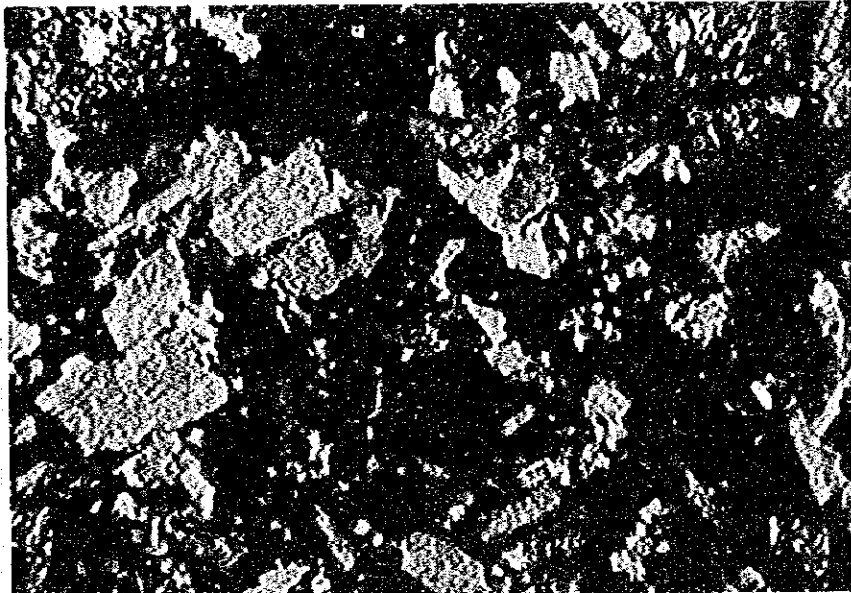
(41) GR-59



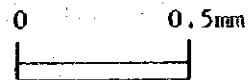
open nicol



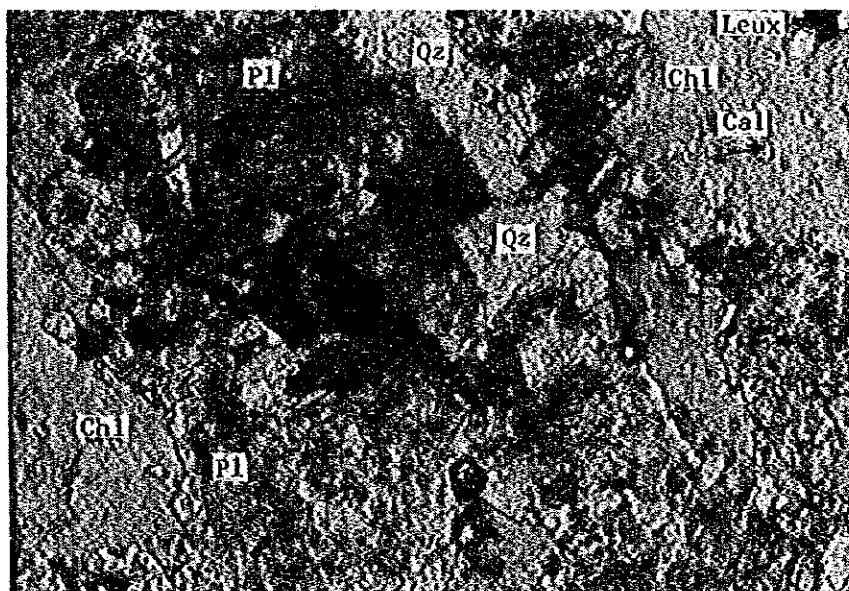
(42) GR-59



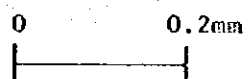
crossed nicols



(43) GR-59



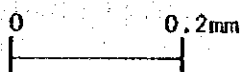
open nicol



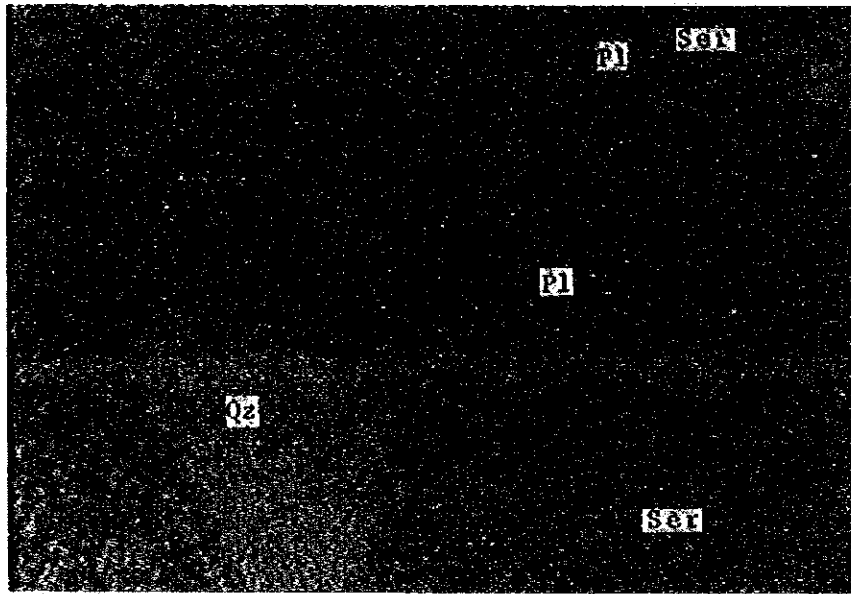
(44) GR-59



crossed nicols



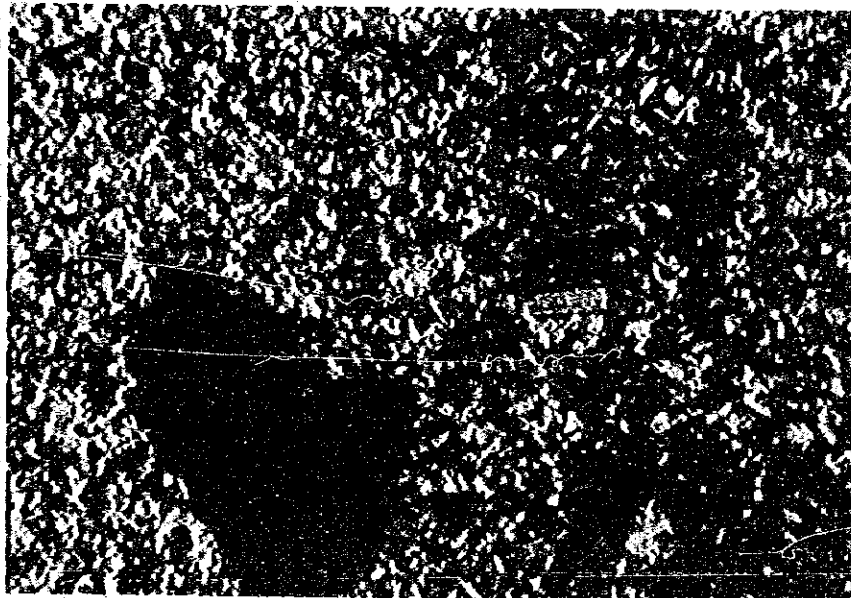
(45) GR-60



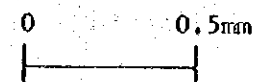
open nicol



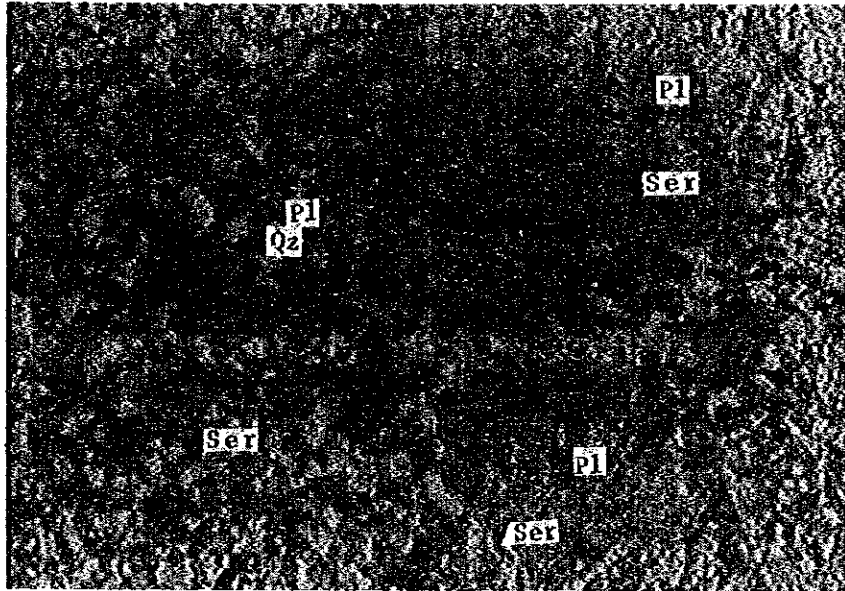
(46) GR-60



crossed nicols



(47) GR-60



open nicol



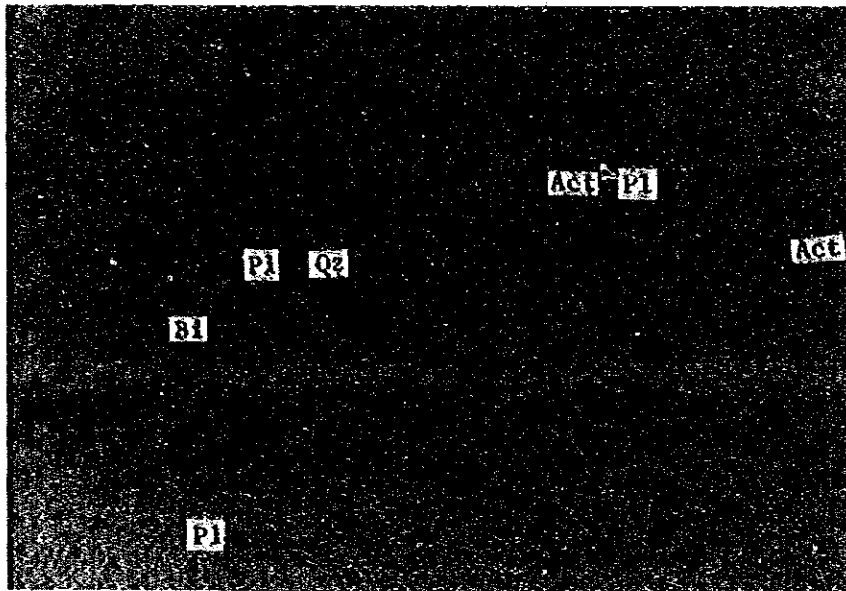
(48) GR-60



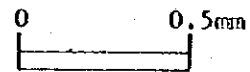
crossed nicols



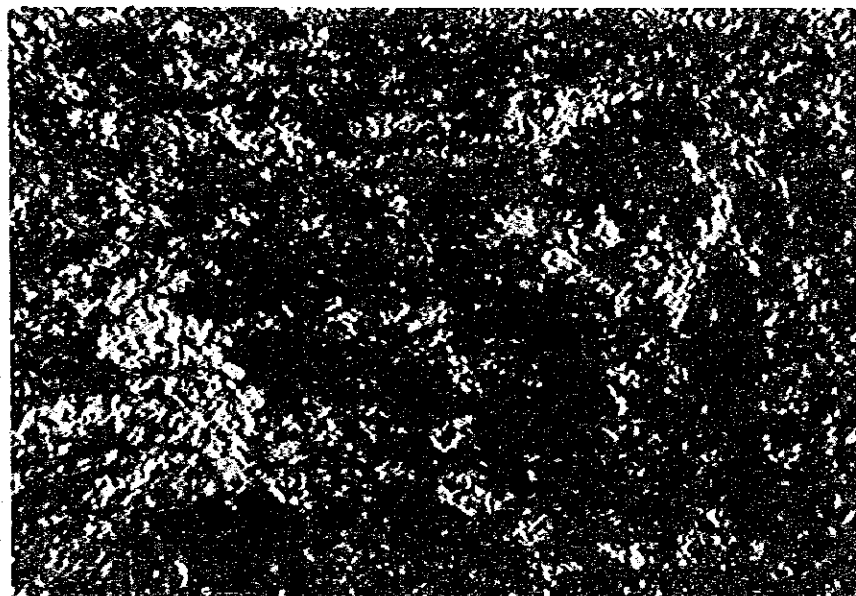
(49) GK-77



open nicol



(50) GK-77

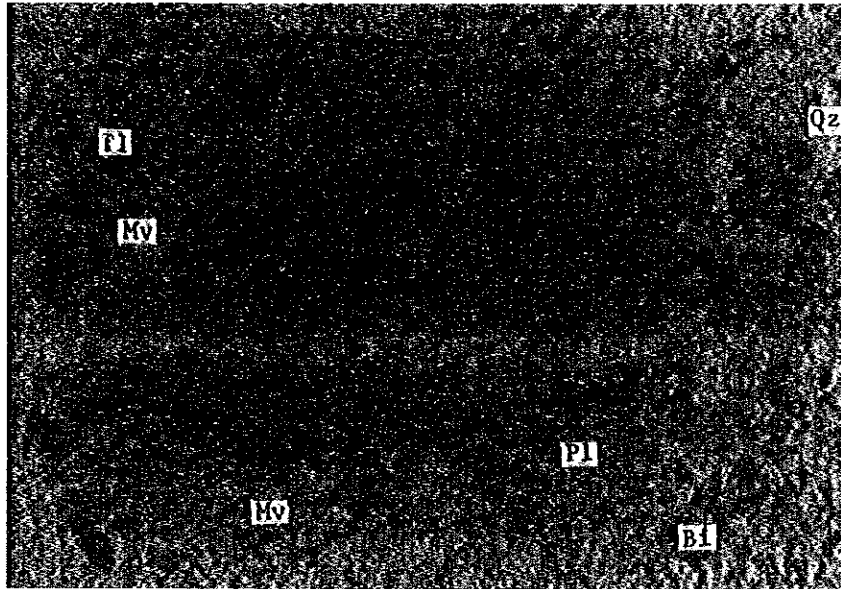


crossed nicols

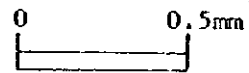




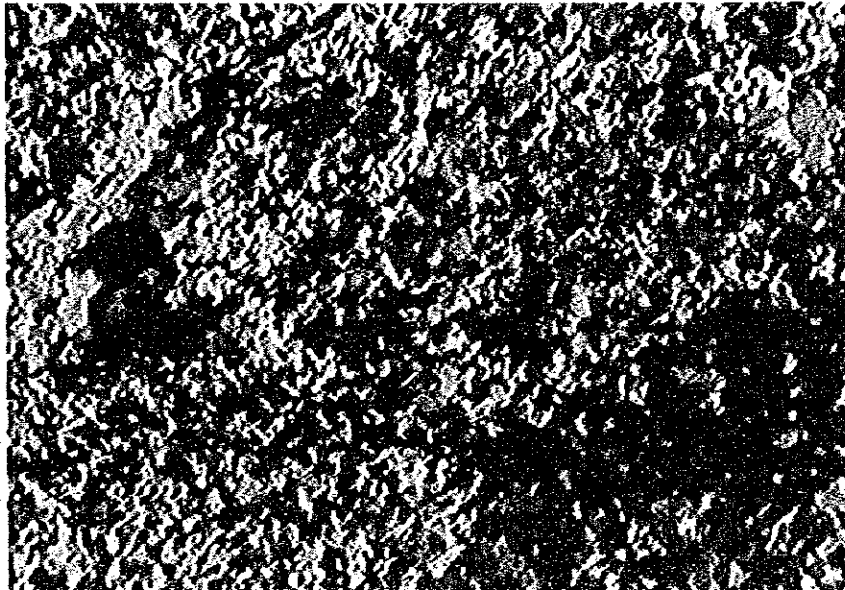
(51) GN-63A



open nicol



(52) GN-63A



crossed nicols

