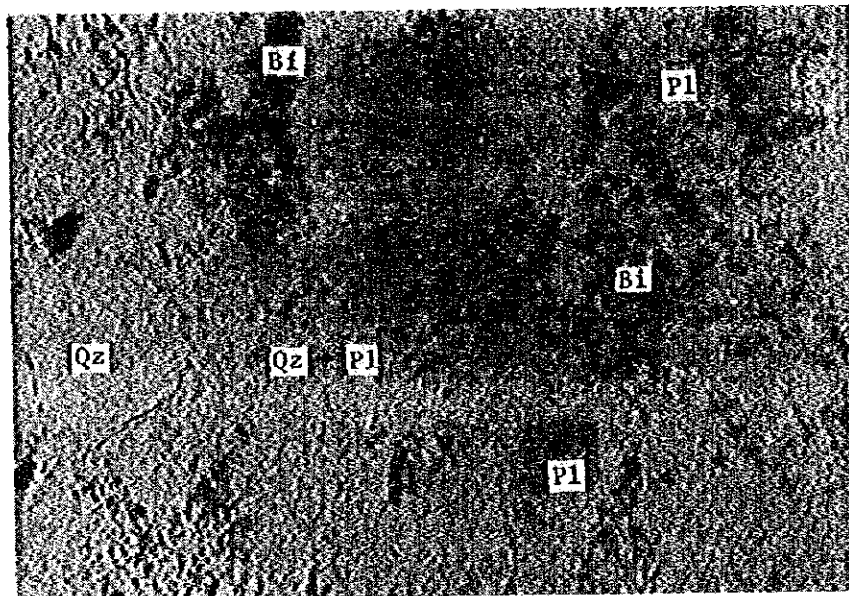


(57) GN-94



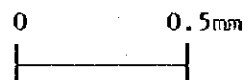
open nicol



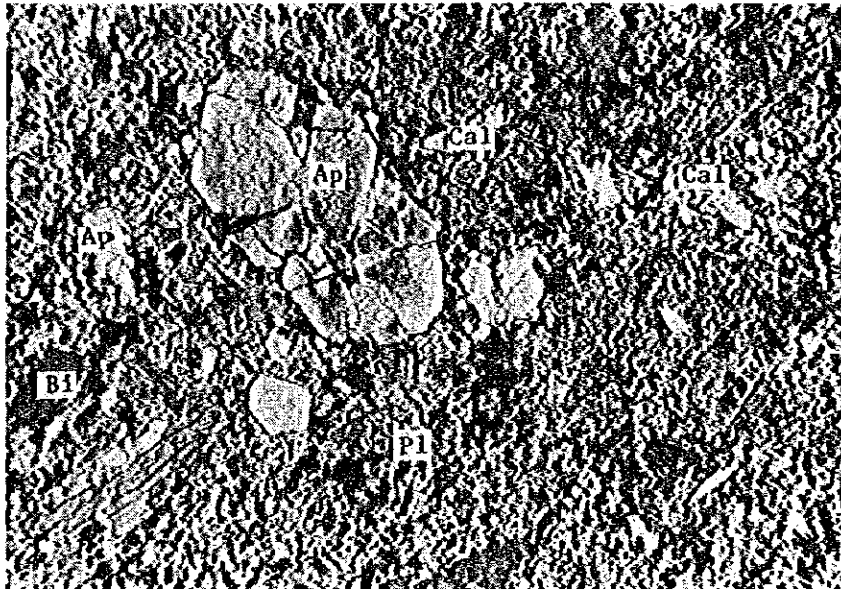
(58) GN-94



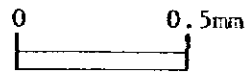
crossed nicols



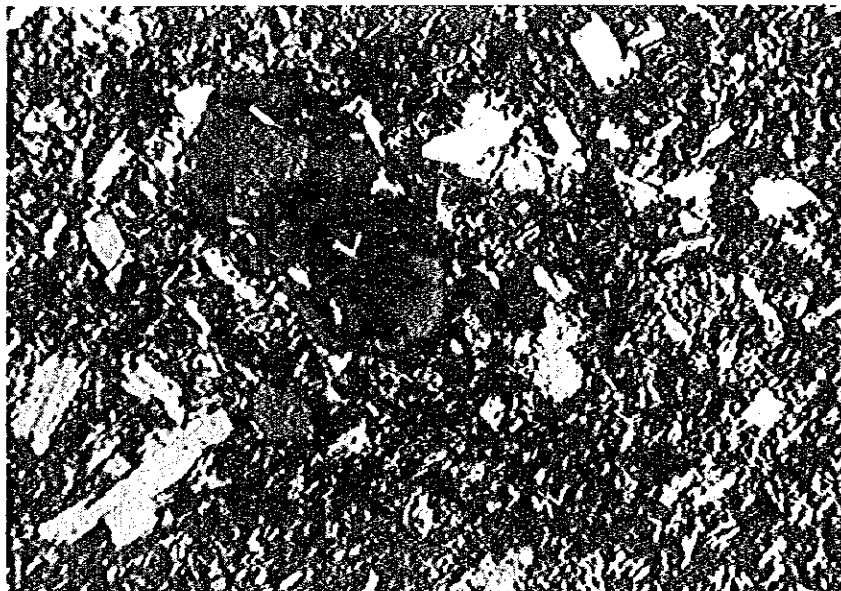
(59) GN-116A



open nicol



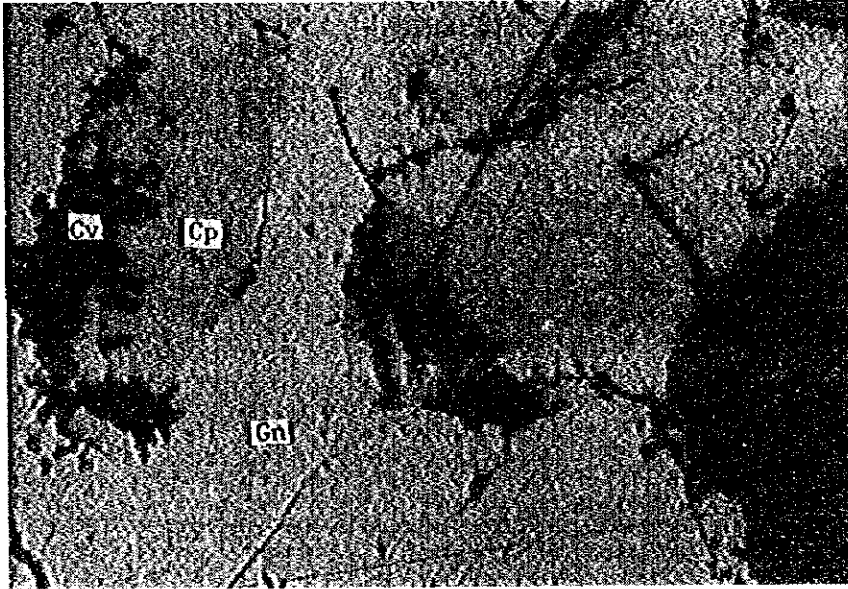
(60) GN-116A



crossed nicols



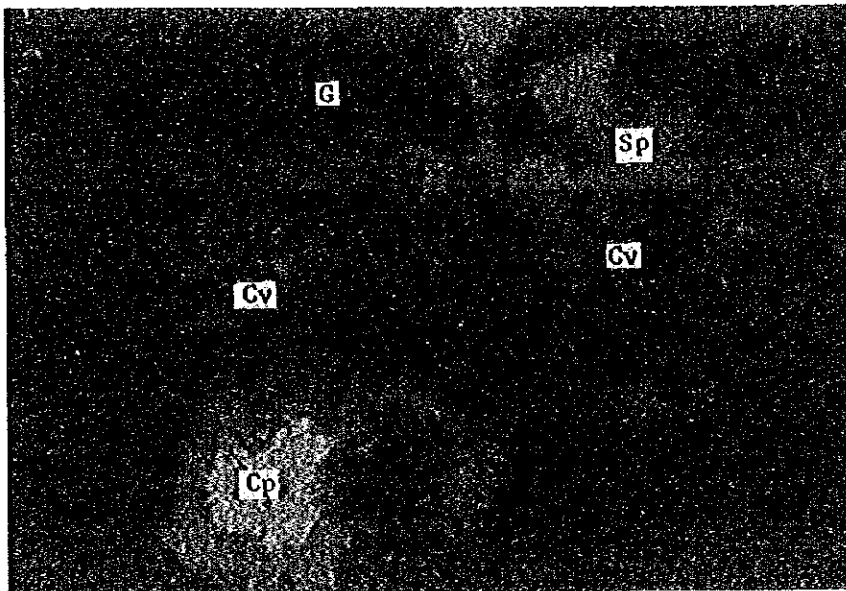
(61) MR-21



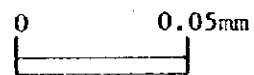
open nicol



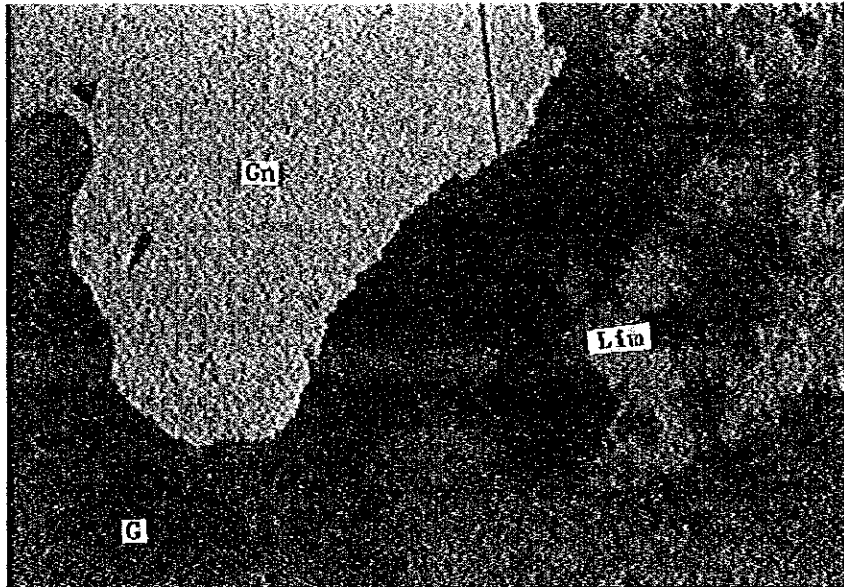
(62) MR-26



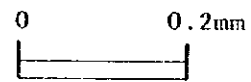
open nicol



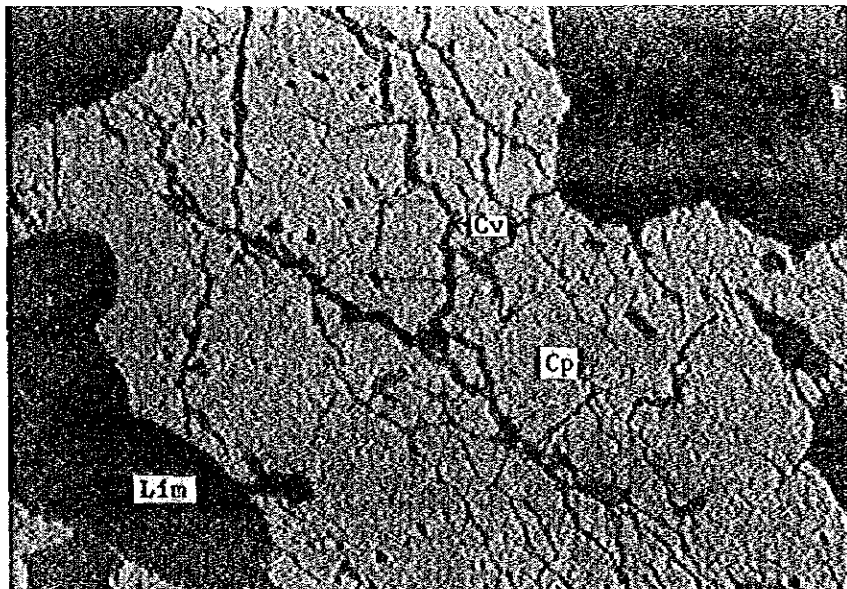
(63) GK-8



open nicol



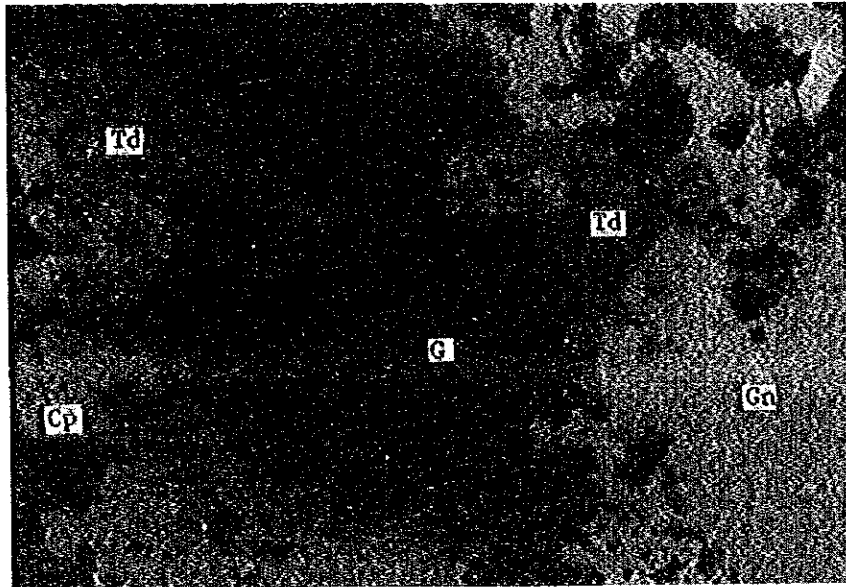
(64) GK-120



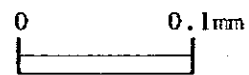
open nicol



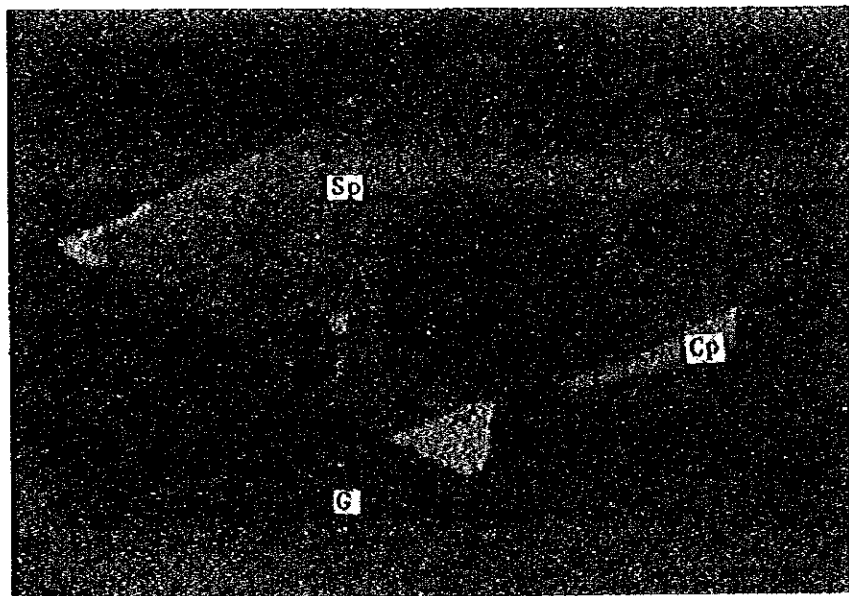
(65) GN-131



open nicol



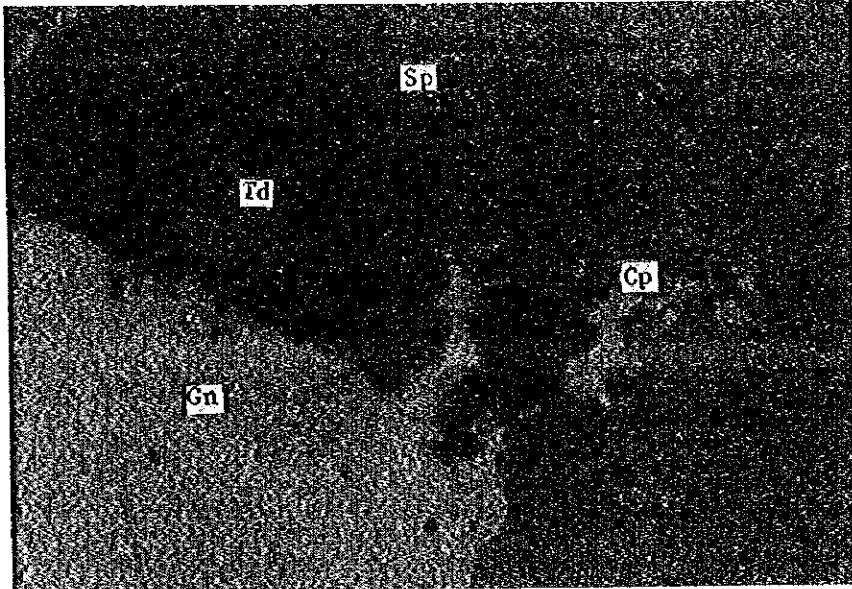
(66) GN-131



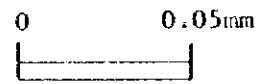
open nicol



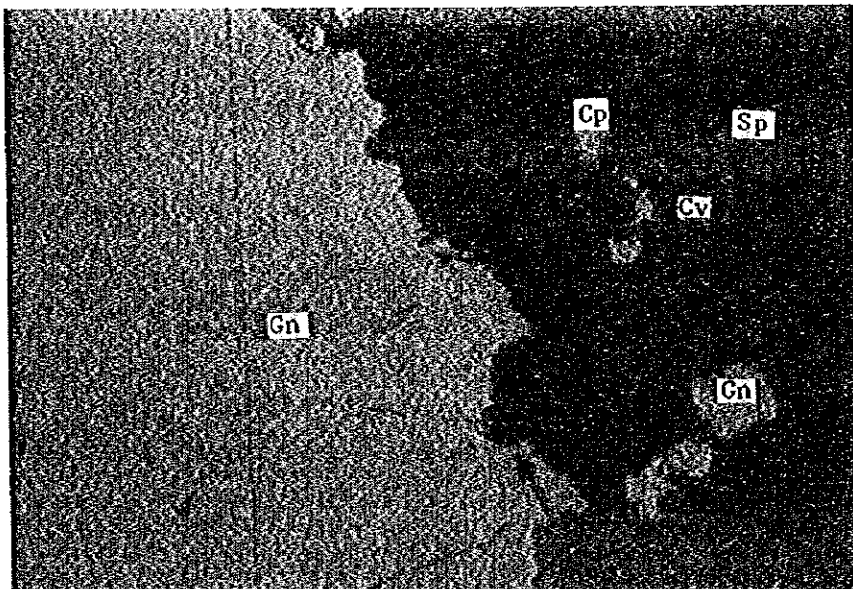
(67) GN-131



open nicol

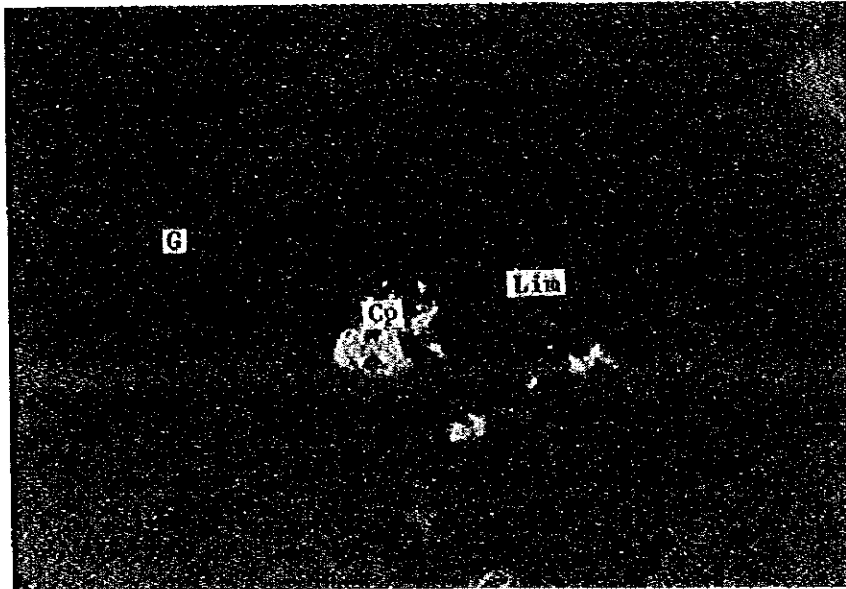


(68) MW-1

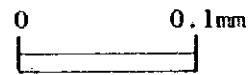


open nicol

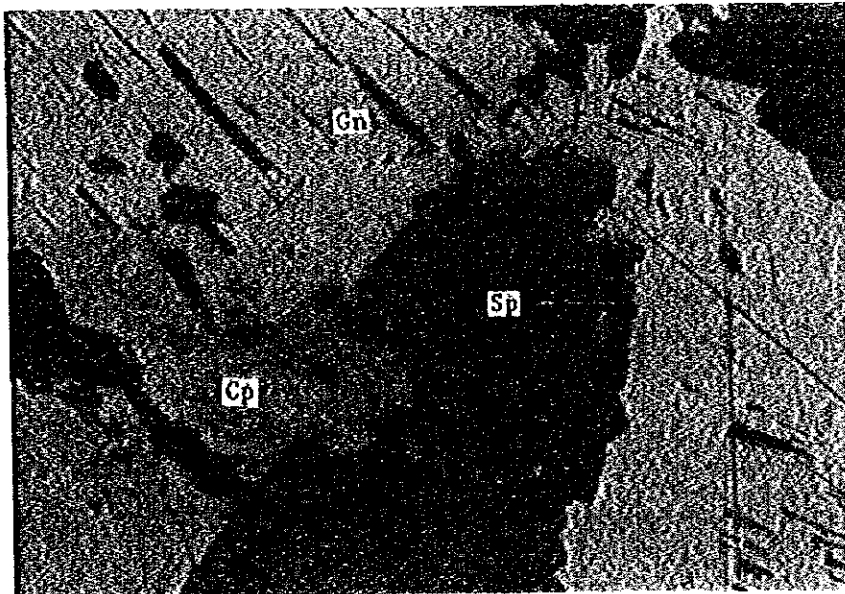
(69) GN-156



open nicol



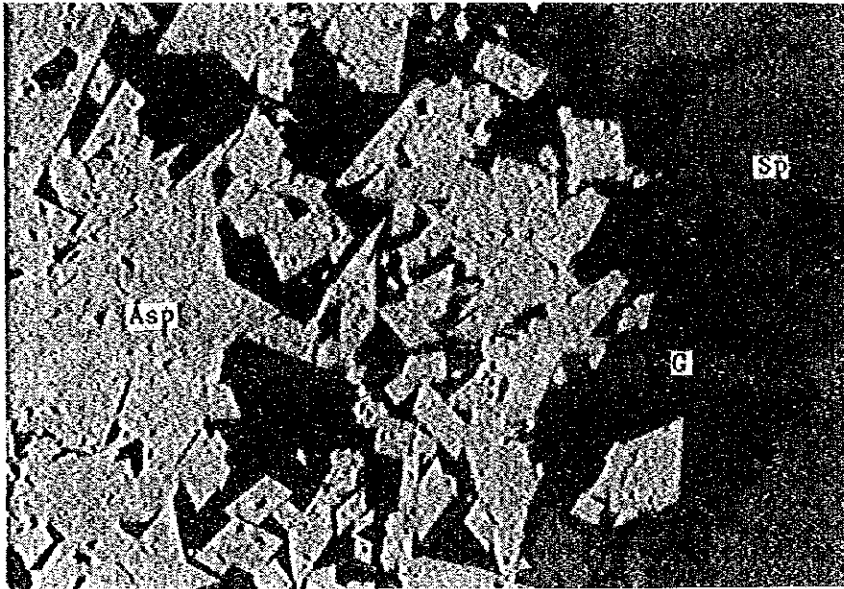
(70) GN-157



open nicol



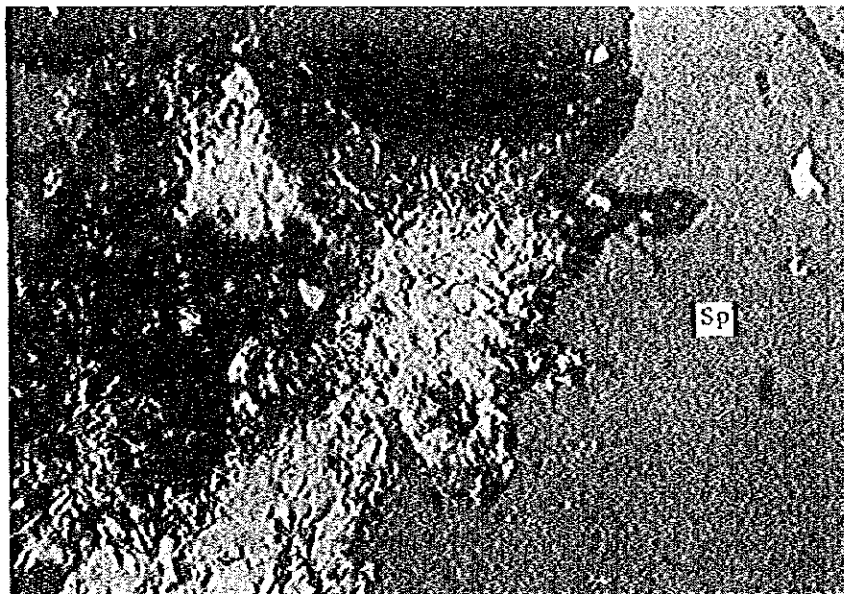
(71) GN-167



open nicol

0 0.1mm

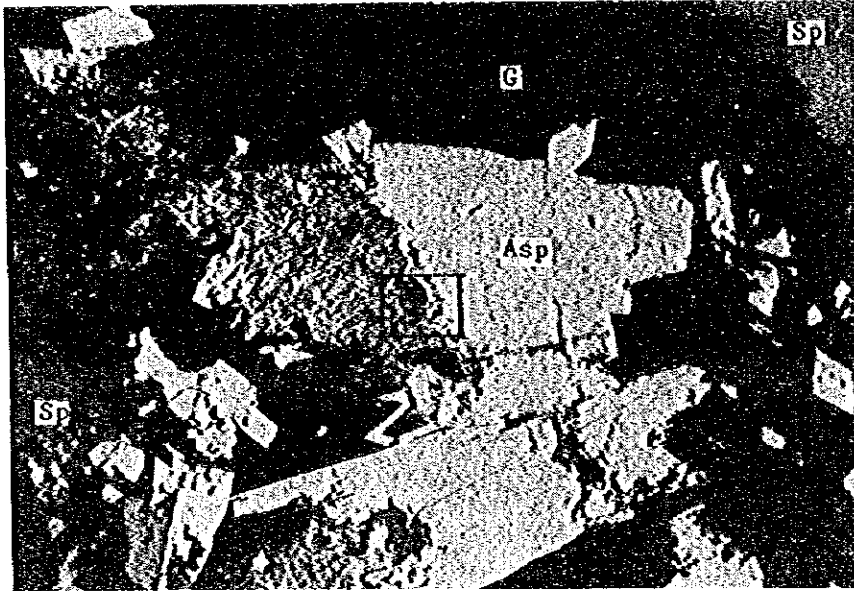
(72) GN-167



open nicol

0 0.05mm

(73) GN-167

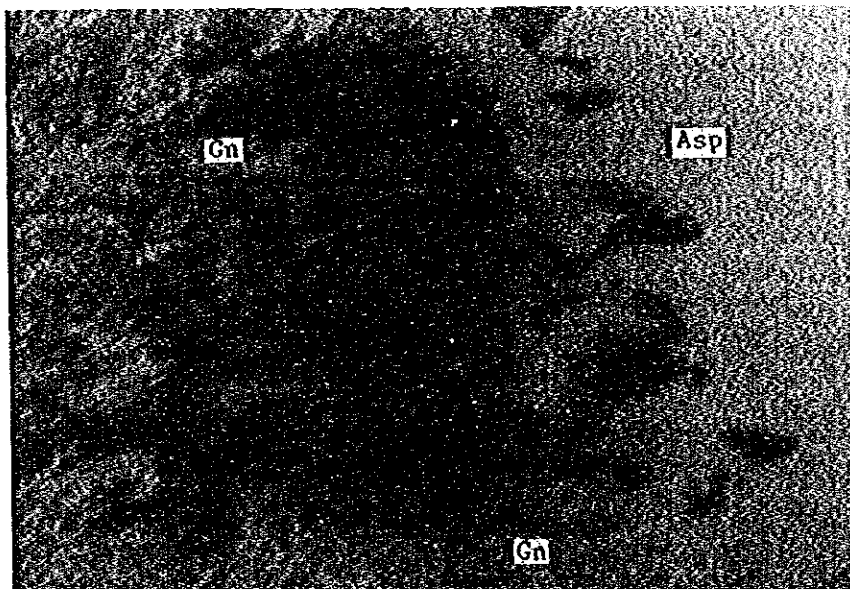


open nicol

0 0.2mm

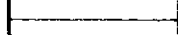


(74) GN-167

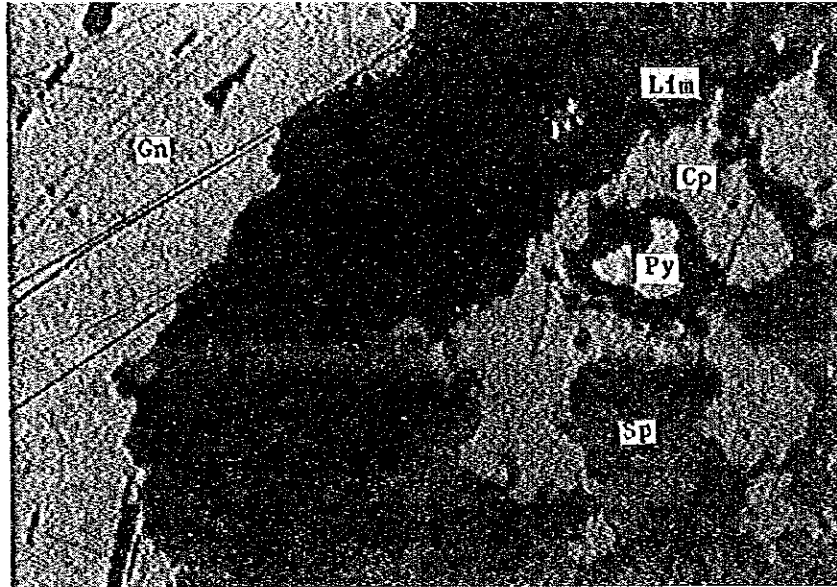


open nicol
Enlarged above

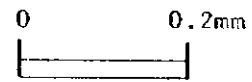
0 0.02mm



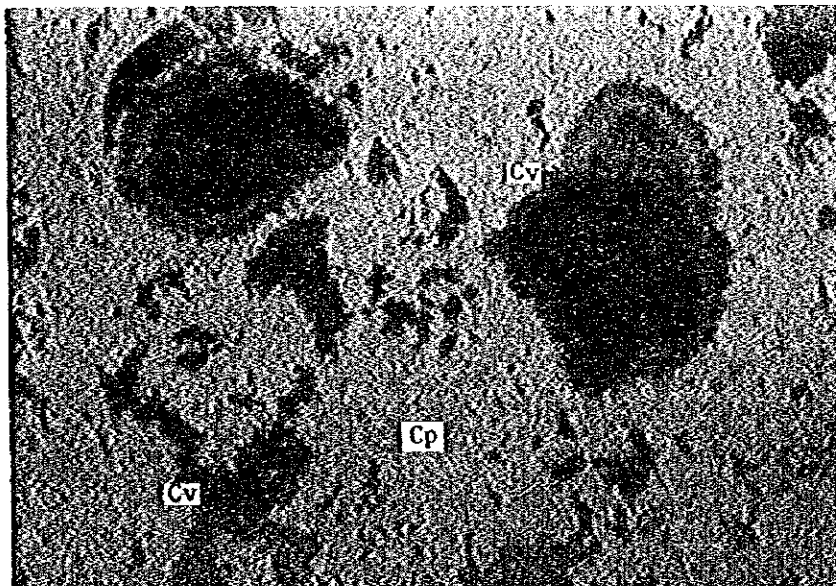
(75) MW-1



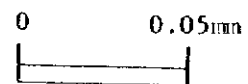
open nicol



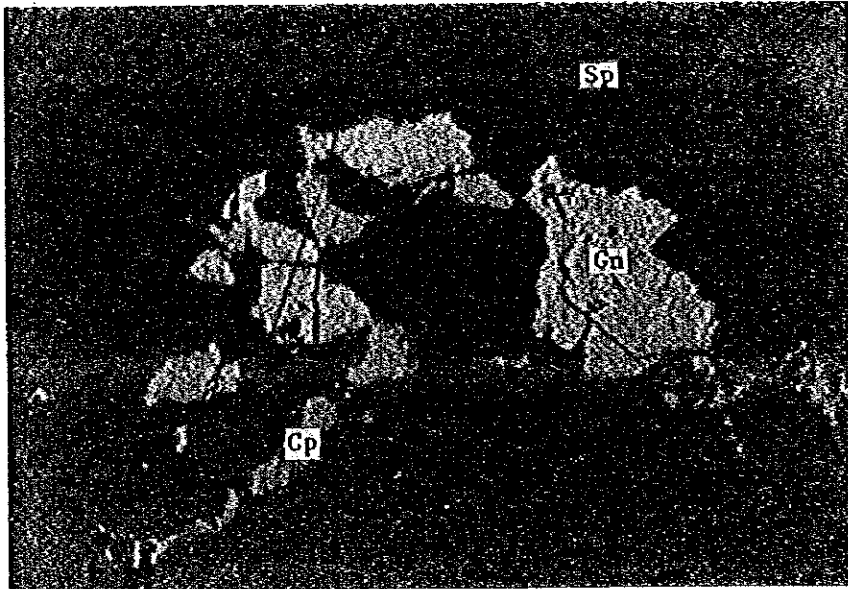
(76) MW-5



open nicol



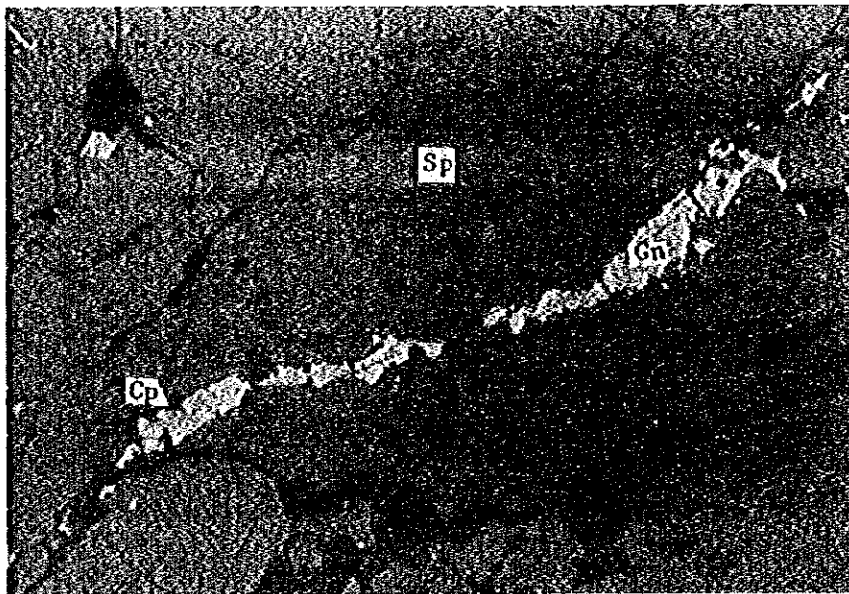
(77) GK-72



open nicol



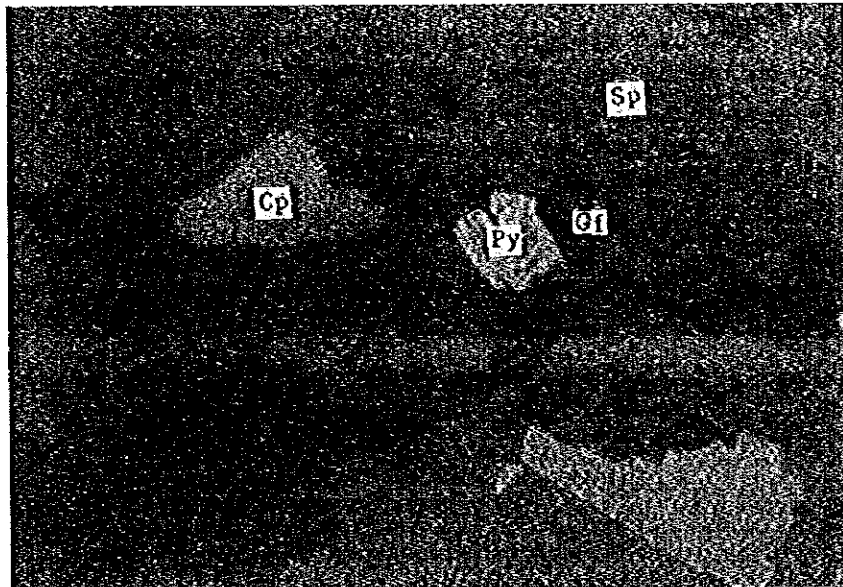
(78) GK-90




open nicol



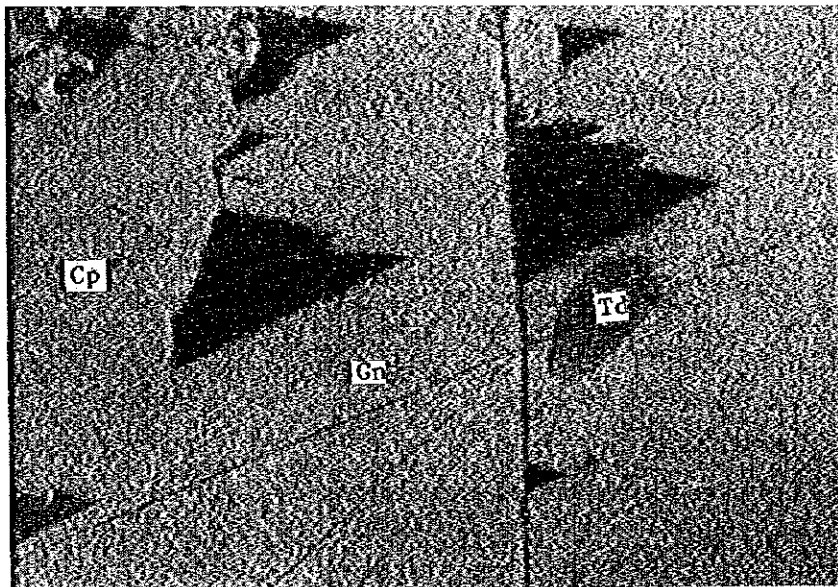
(79) GK-90




open nicol

0 0.05mm


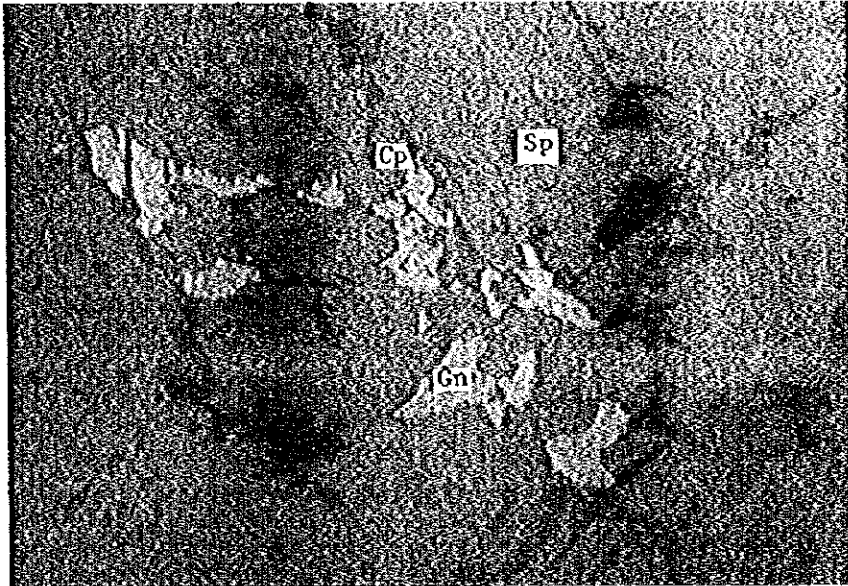
(80) GK-90



open nicol

0 0.05mm


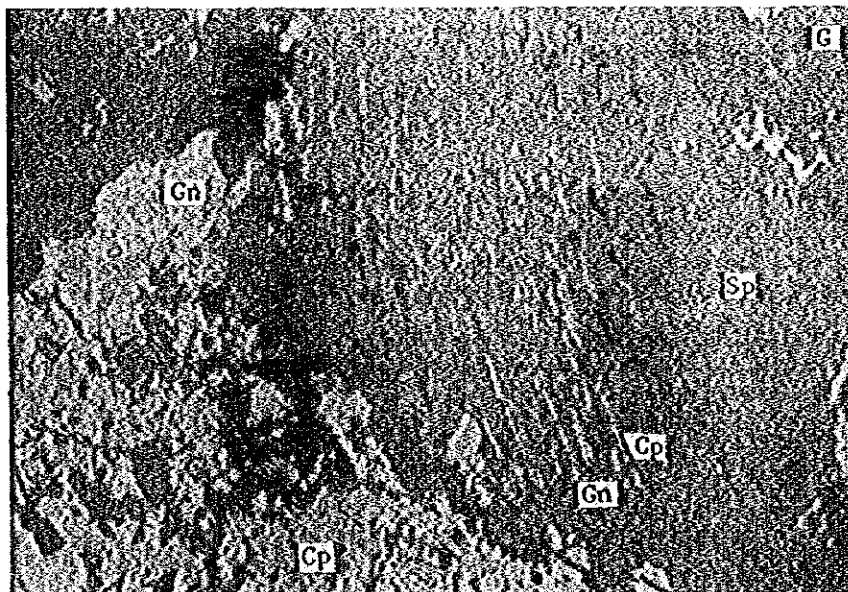
(81) GK-90



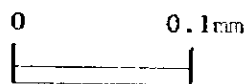
open nicol



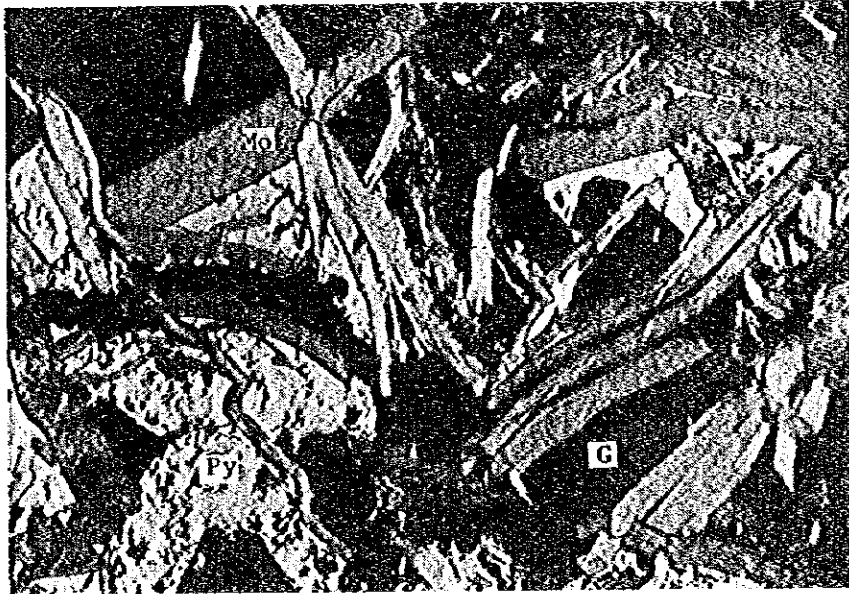
(82) GN-52



open nicol



(83) GN-73



open nicol



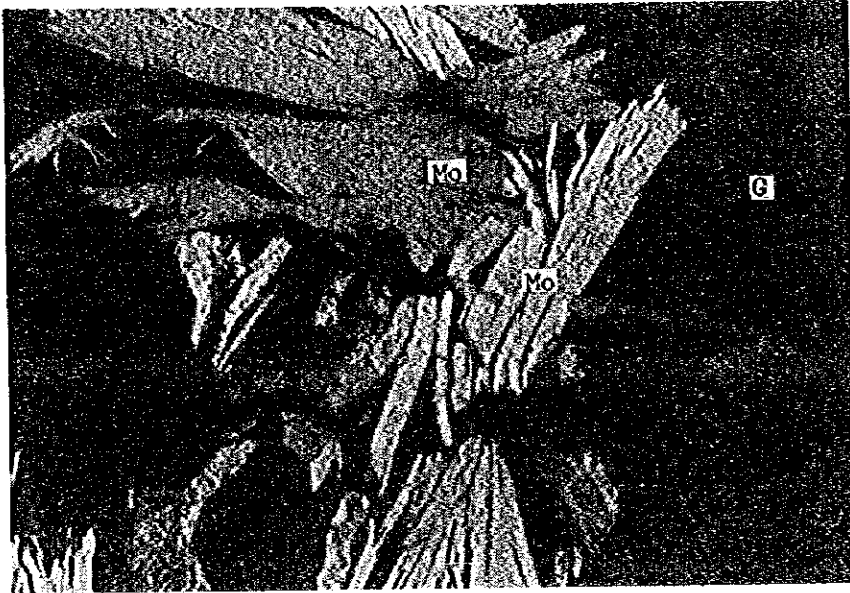
(84) GN-76



open nicol



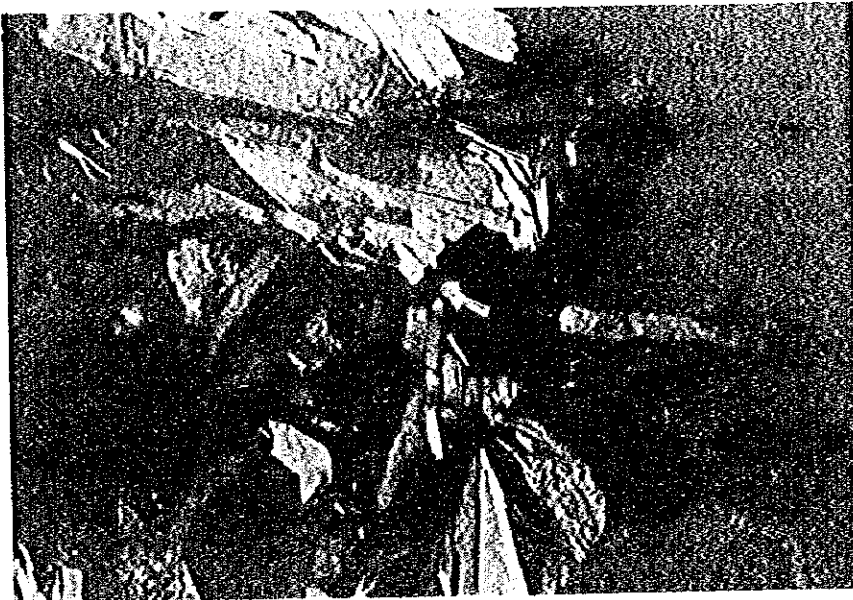
(85) GH-4



crossed nicols



(86) GH-4



open nicol

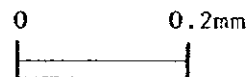
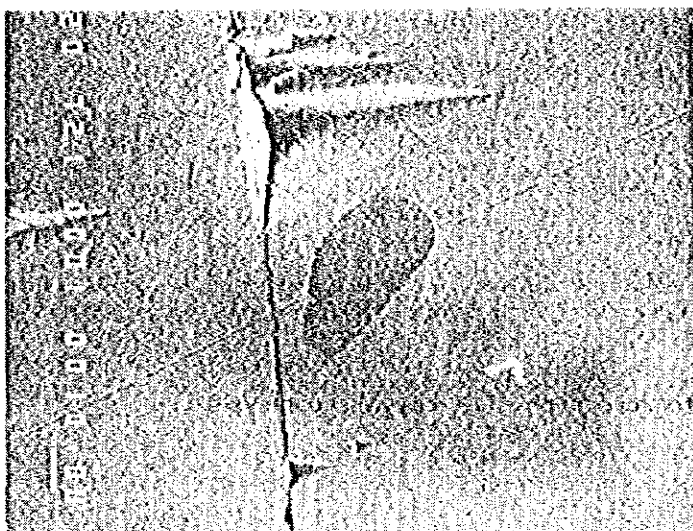
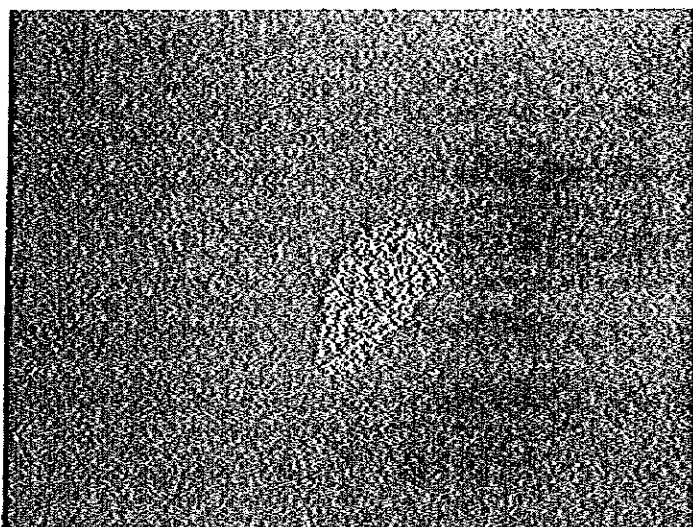


Table 10 Photomicrograph of X-ray Microanalysis

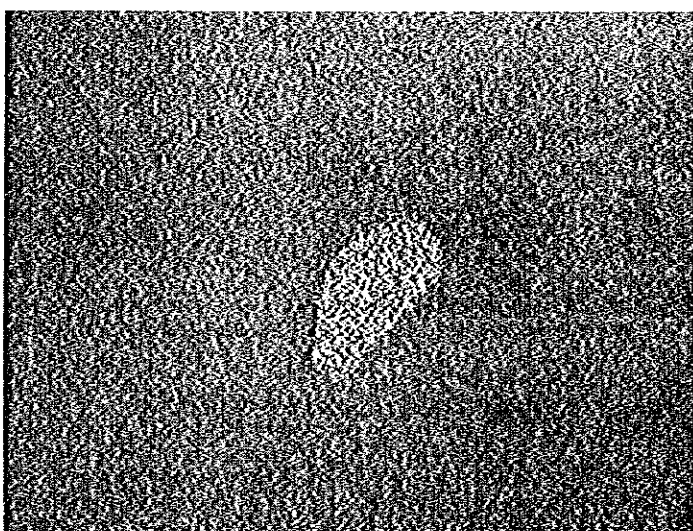
(1)



Absorbed electron image
Freibergite(center)is
enclosed in galena crystal.




Ag X-ray image

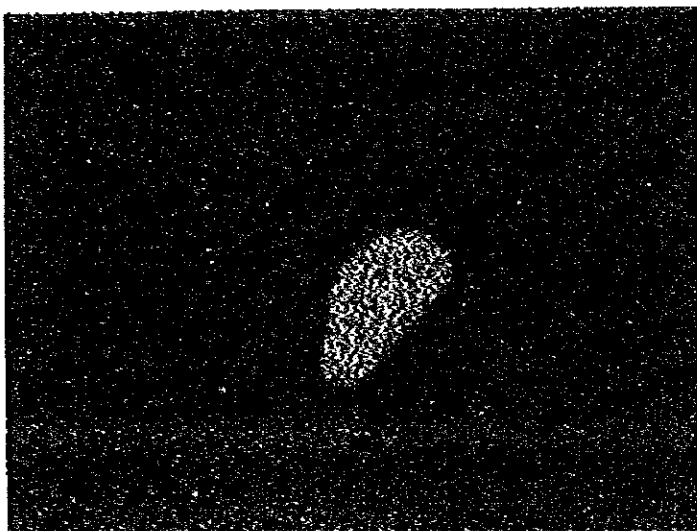


Cu X-ray image

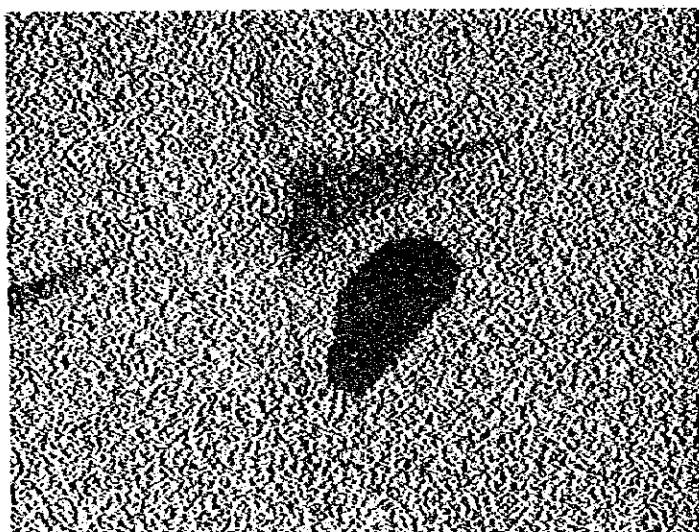
Sample No. : GK-90
Locality : Erdouz
Accel. volt. : 20 KV
Absorb. elect. : 0.04 μ A

0 0.05mm


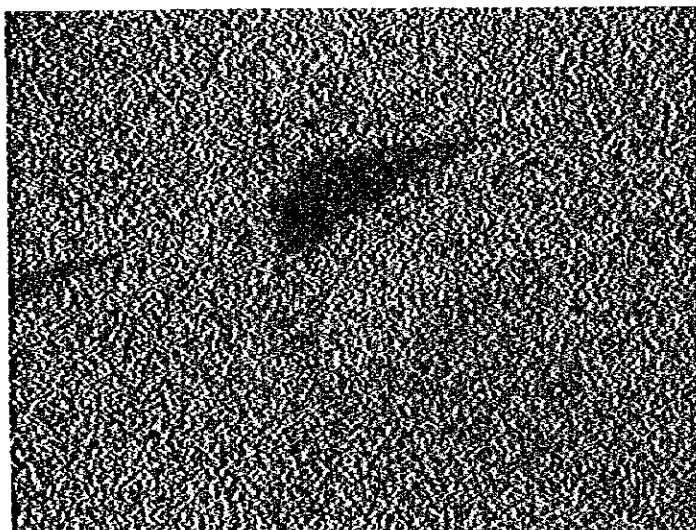
(2)



Sb X-ray image

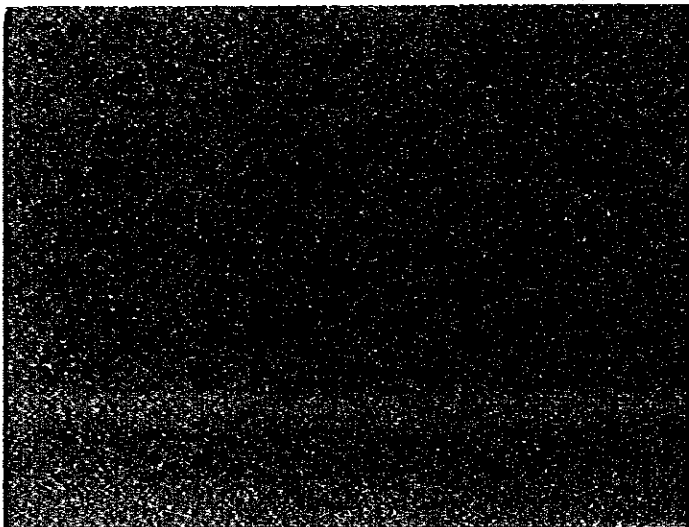


Pb X-ray image



S X-ray image

(3)



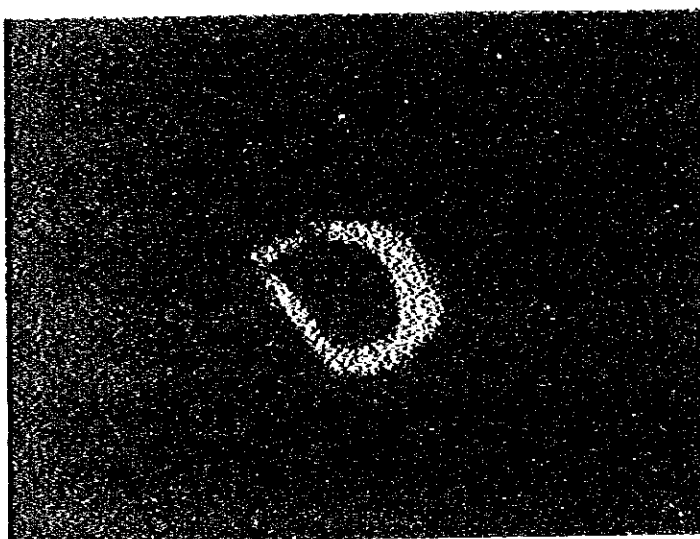
As X-ray image

(1)

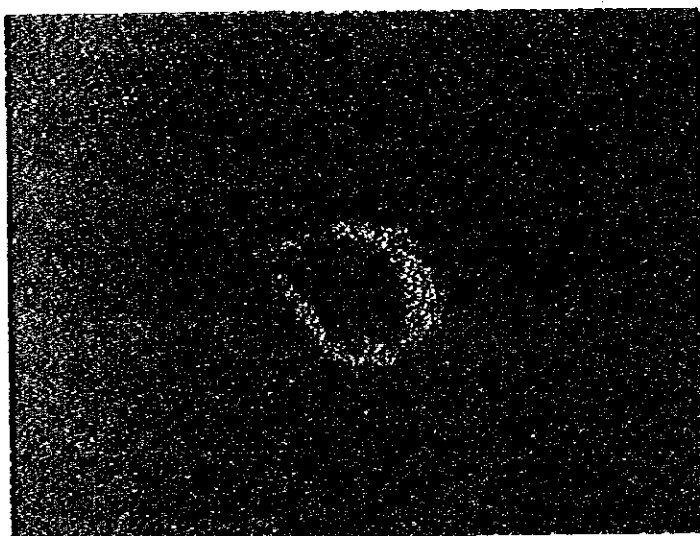


Absorbed electron image

Gersdorffite(center) is
observed surrounding pyrite
core in sphalerite crystal.



Ni X-ray image



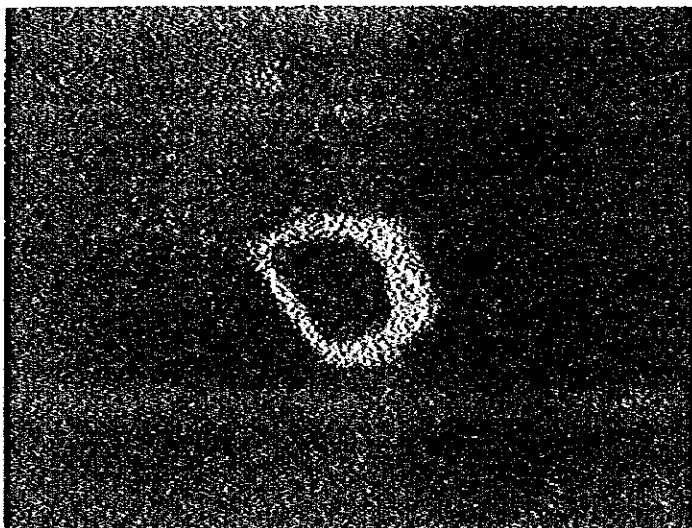
Co X-ray image

Sample No. : GK-90
Locality : Erdouz
Accel. volt. : 20 KV
Absorb. elect. : 0.04 μ A

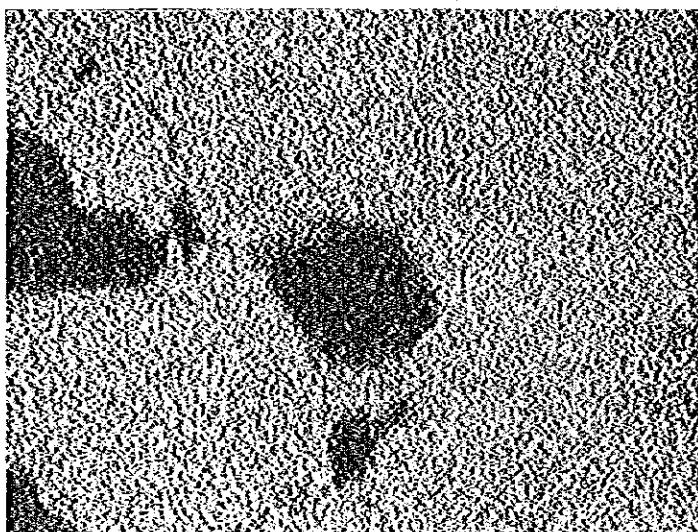
0 0.05mm

A horizontal scale bar with a vertical tick at the left end labeled '0' and a vertical tick at the right end labeled '0.05mm'.

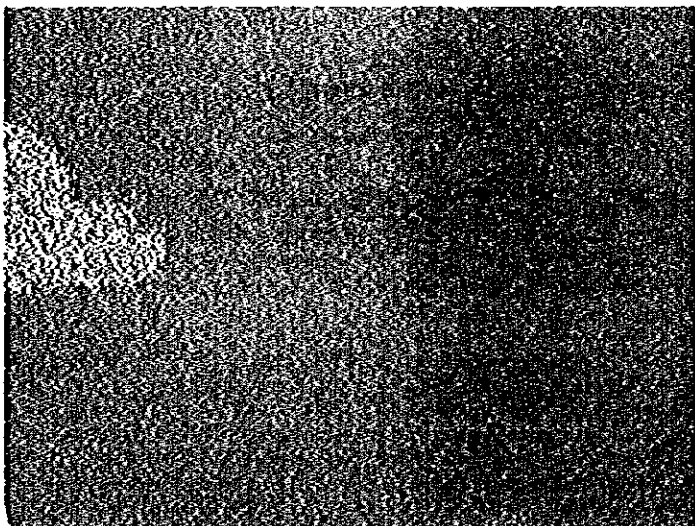
(2)



As X-ray image



Zn X-ray image



Cu X-ray image