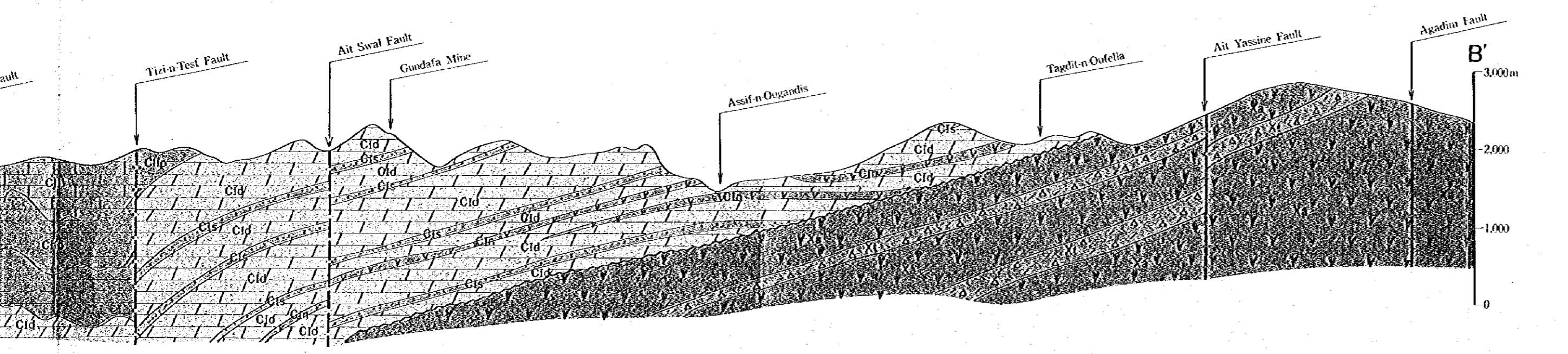


CIV Formation	CIVm	psammitic schist
	CIVp	pelitic schist
	CIVl	limestone
	CIVt	green schist (tuff, tuff breccia)
CIII Formation	CIIIa	andesite, tuff, tuff breccia
	CIIIb	psammitic schist
	CIIIc	pelitic schist
	CIIIl	limestone
CII Formation	CIIa	calcareous schist
	CIIb	green schist (tuff, tuff breccia)
	CIIc	psammitic schist
	CIIp	pelitic schist
CI Formation	CIIl	limestone
	CIIt	green schist (tuff, tuff breccia)
	CIIn	andesite, tuff, tuff breccia
	CIs	siltstone, sandstone
Pre-Cambrian	CIn	andesite, tuff, tuff breccia
	CIl	limestone
	CId	dolomite
	CIc	conglomerate
Intrusive rock	Xa	andesite
	Xt	tuff, lapilli tuff, tuff breccia
	Gr	granite, diorite
	Po	porphyrite
	Do	dolerite
	— — —	fault
	~~~~~	unconformity
	///	anticlinal axis/synclinal axis/overtured fold
	---	stratigraphic boundary
	/	bedding plane
	●	mineral indication



1911