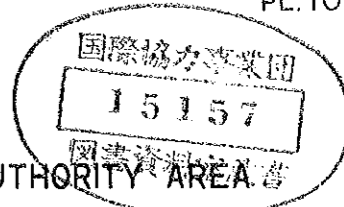


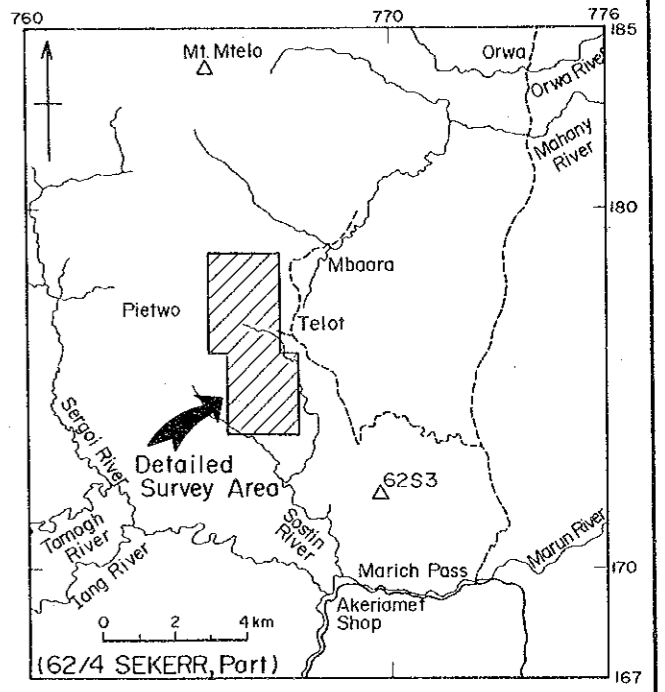
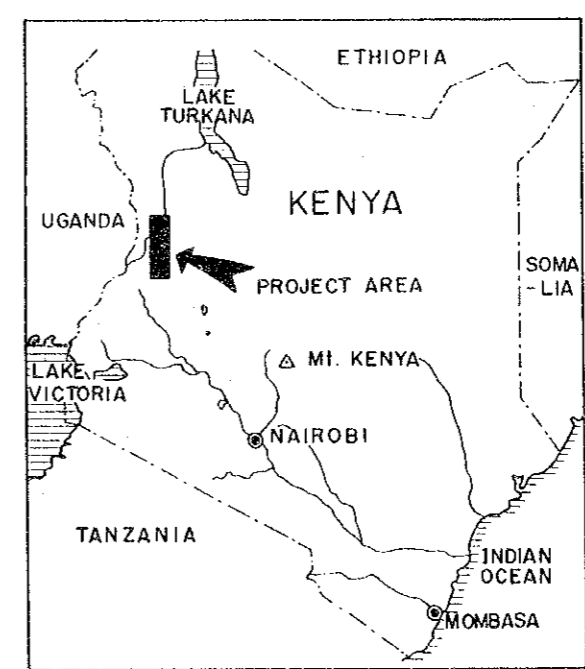
MINERAL EXPLORATION  
 IN  
 THE KERIO VALLEY DEVELOPMENT AUTHORITY AREA  
 (PHASE II)



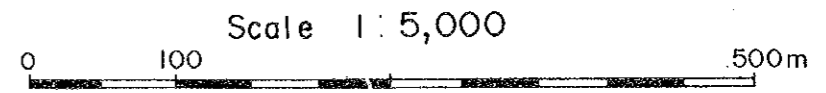
LOCATION MAP OF GEOCHEMICAL SAMPLES  
 TESTED SAMPLES, PITS AND TRENCHES

DETAILED SURVEY AREA

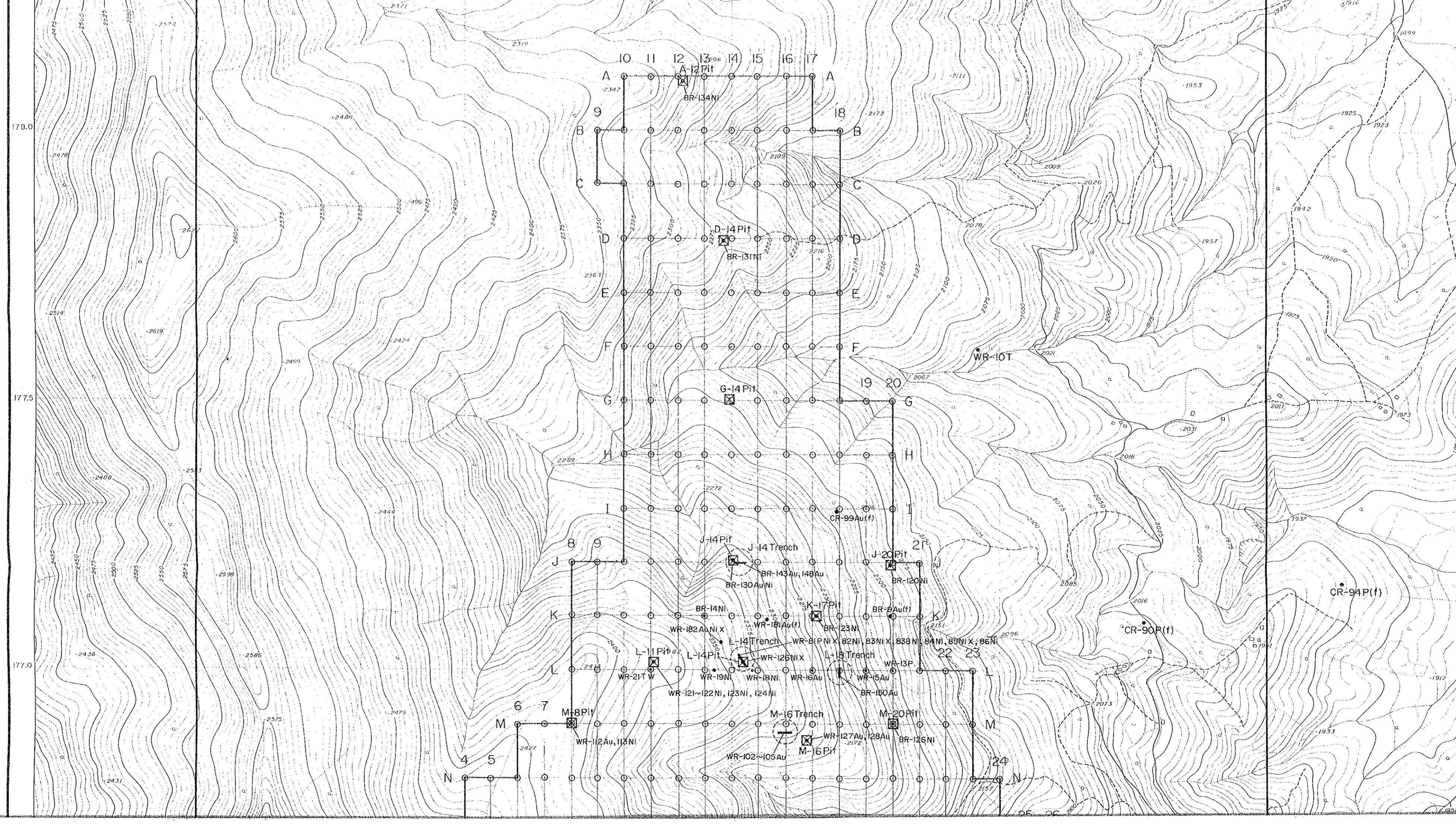
LOCATION INDEX



JAPAN INTERNATIONAL COOPERATION AGENCY  
 METAL MINING AGENCY OF JAPAN  
 December 1984







178.0

177.5

177.0

10 11 12 13 14 15 16 17

A A

B B

C C

D D

E E

F F

G G

H H

I I

J J

K K

L L

M M

N N

A-12 Pit

BR-134 Ni

D-14 Pit

BR-131 Ni

G-14 Pit

J-14 Pit

J-14 Trench

BR-143 Au, 148 Au

BR-130 Au/Ni

L-14 Pit

WR-121 Ni, 122 Ni, 123 Ni, 124 Ni

M-8 Pit

WR-112 Au, 113 Ni

WR-102 Ni, 105 Au

J-20 Pit

BR-120 Ni

BR-14 Ni

WR-182 Au/Ni X

WR-19 Ni

WR-18 Ni

WR-16 Au

WR-127 Au, 128 Au

M-16 Pit

WR-126 Ni

19 20

G G

H H

I I

J J

K K

L L

M M

N N

21 22

K K

L L

M M

N N

23 24

N N

WR-10T

CR-90 P(f)

CR-94 P(f)

2489

2496

2474

2444

2538

2566

2479

2427

2111

2172

2189

2175

2150

2125

2100

2075

2067

2067

2075

2050

2025

2000

2005

2016

2096

2151

2096

2073

2172

2157

1953

1925

1923

1942

1957

1950

1975

2021

2016

2031

2011

1973

1961

1960

1939

2016

1912

1933

1953

1953

1953

1953

1916

1999

1900

1925

1923

1899

1942

1957

1950

1975

2021

2016

2031

2011

1973

1961

1960

1939

2016

1912

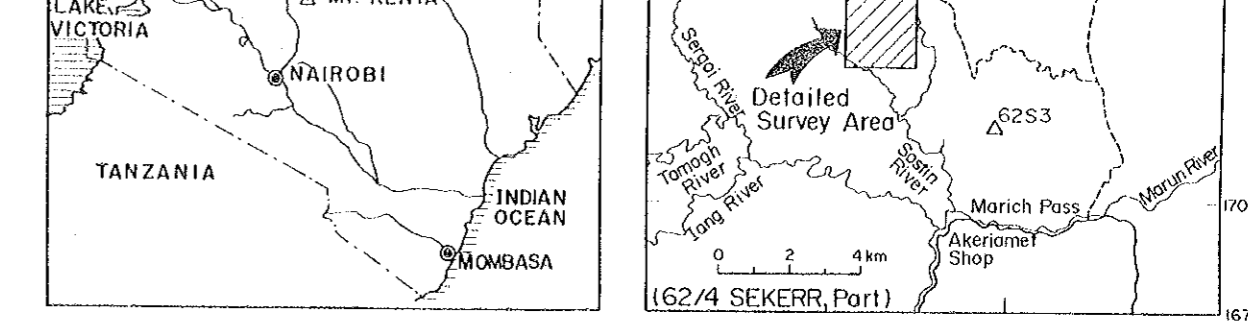
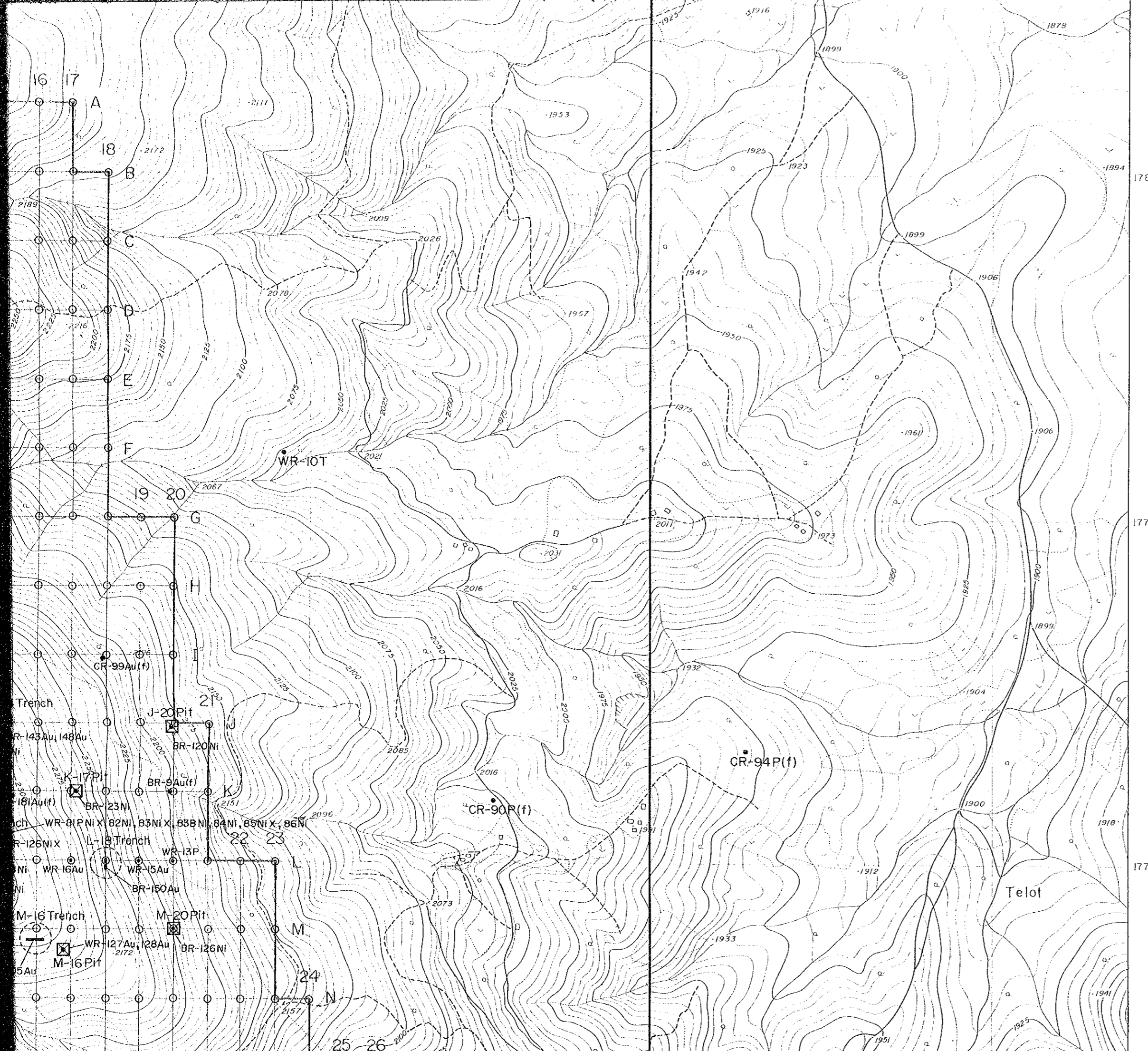
1933

1953

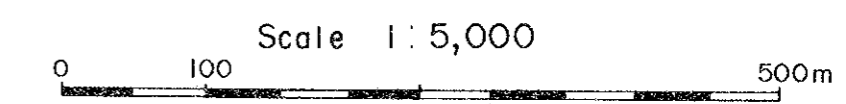
1953

1953

1953



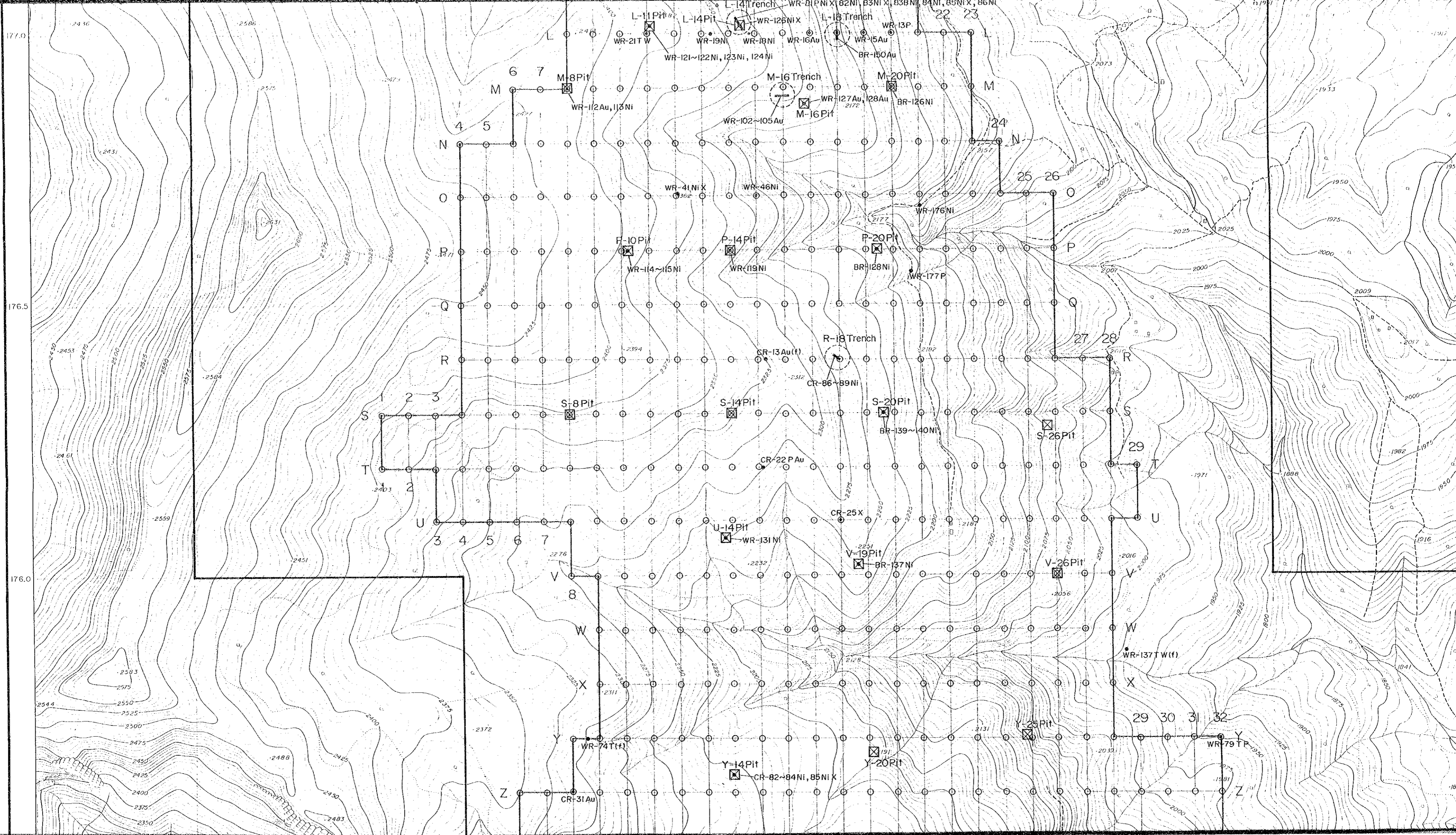
JAPAN INTERNATIONAL COOPERATION AGENCY  
 METAL MINING AGENCY OF JAPAN  
 December 1984

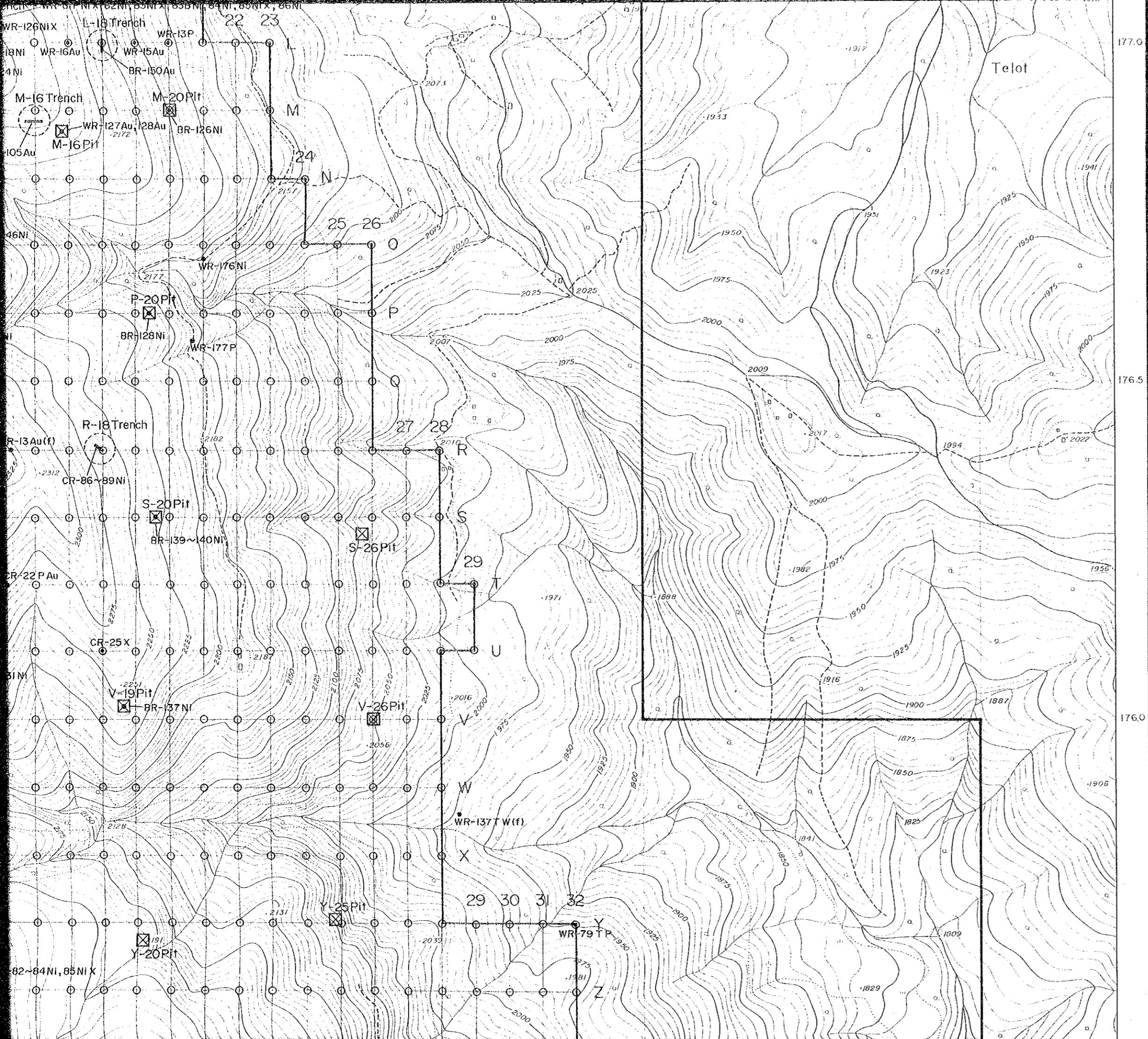


### LEGEND

- ☒ Pit
- ⊖ Trench
- Soil sample  
(Sample number is given by the name of E-W line and the number of N-S line like A-15)
- BR-93 Sampling site and sample number for following tests
  - T : Thin section
  - P : Polished section
  - Au : Chemical analysis of mineralized sample for Au and Ag
  - Ni : Chemical analysis of mineralized sample for Ni, Cr, Co, Fe, MgO and SiO<sub>2</sub>
  - W : Chemical analysis of whole rock







BR-93 Sampling site and sample number for following tests

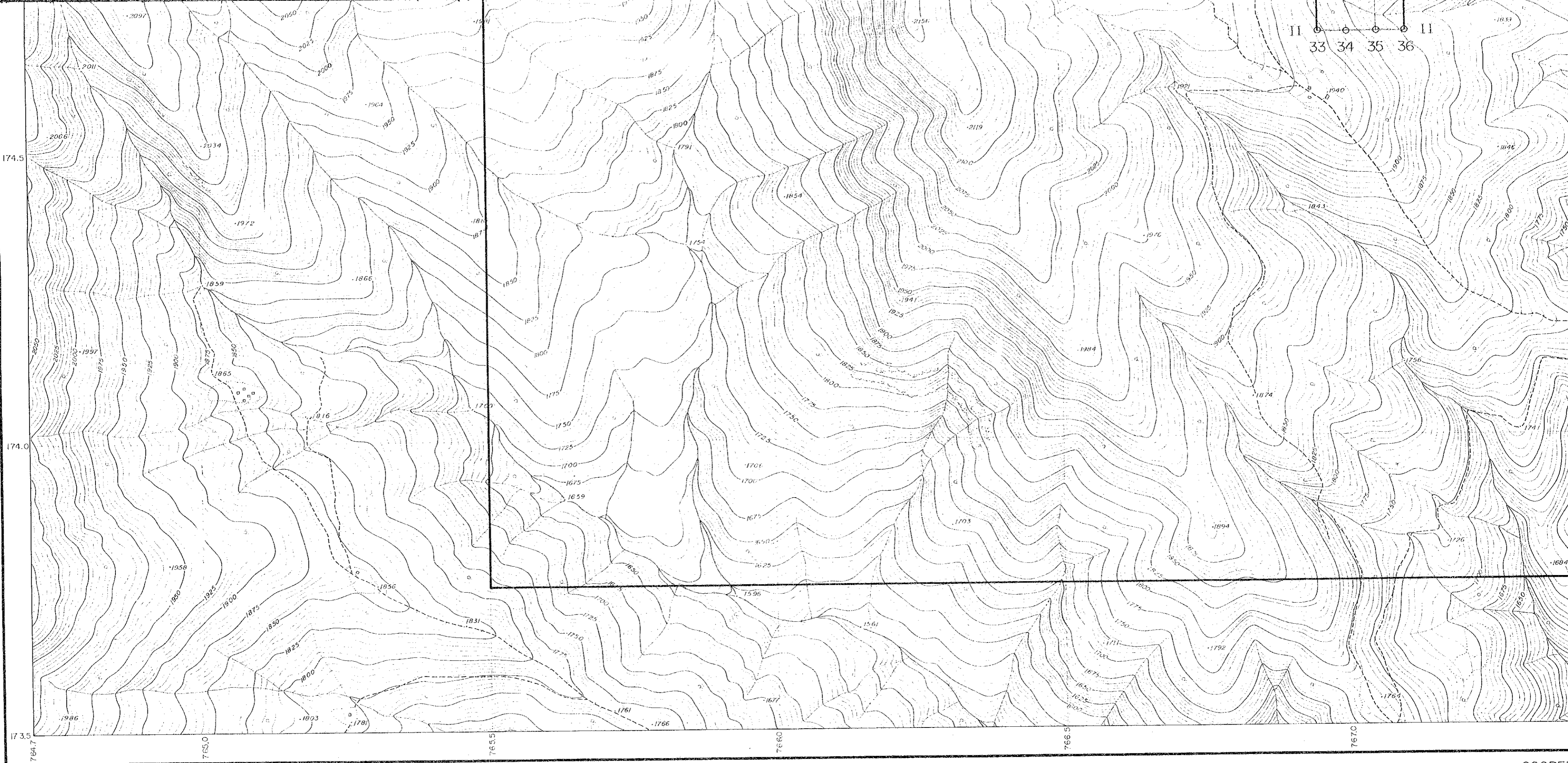
- T : Thin section
- P : Polished section
- Au : Chemical analysis of mineralized sample for Au and Ag
- Ni : Chemical analysis of mineralized sample for Ni, Cr, Co, Fe, MgO and SiO<sub>2</sub>
- W : Chemical analysis of whole rock
- X : X-ray diffractive analysis
- (f) : float











II 33 34 35 36 II

174.5

174.0

173.5

765.0

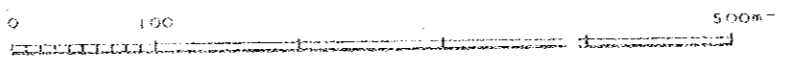
765.5

766.0

766.5

767.0

1:5,000



COOPER  
IN THE  
AUTHOR





JCA