

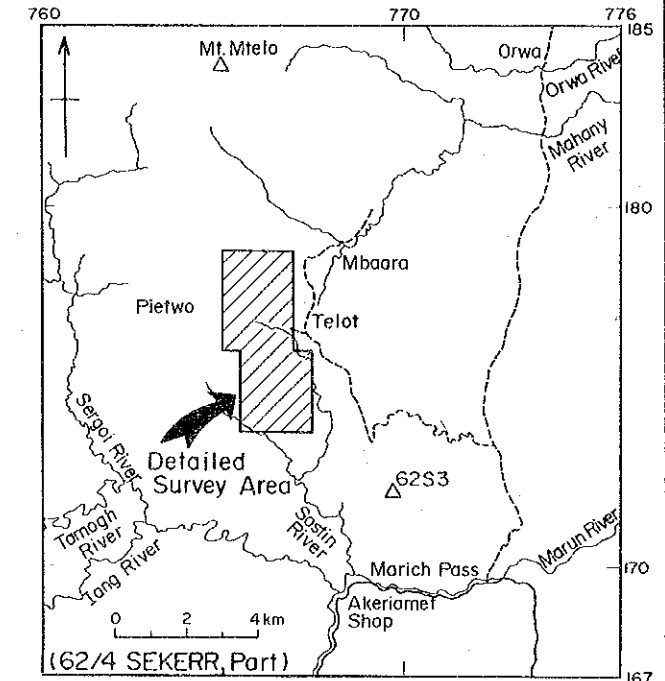
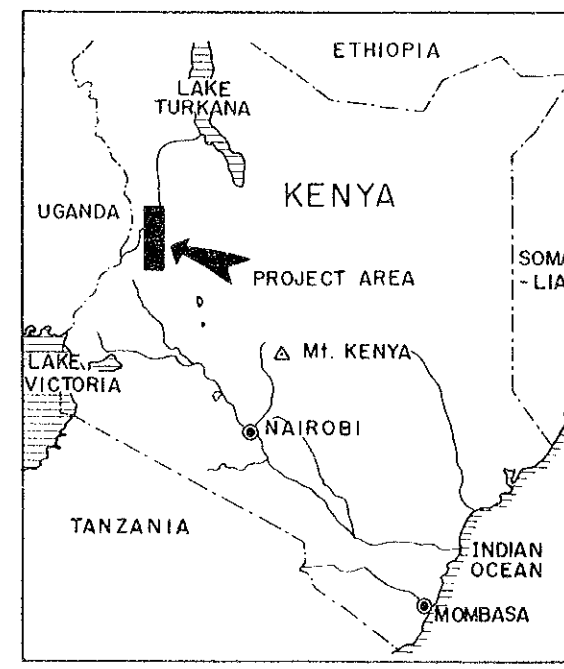
国際協力事業団  
15157  
図書資料室蔵書

MINERAL EXPLORATION  
IN  
THE KERIO VALLEY DEVELOPMENT AUTHORITY AREA  
(PHASE II)

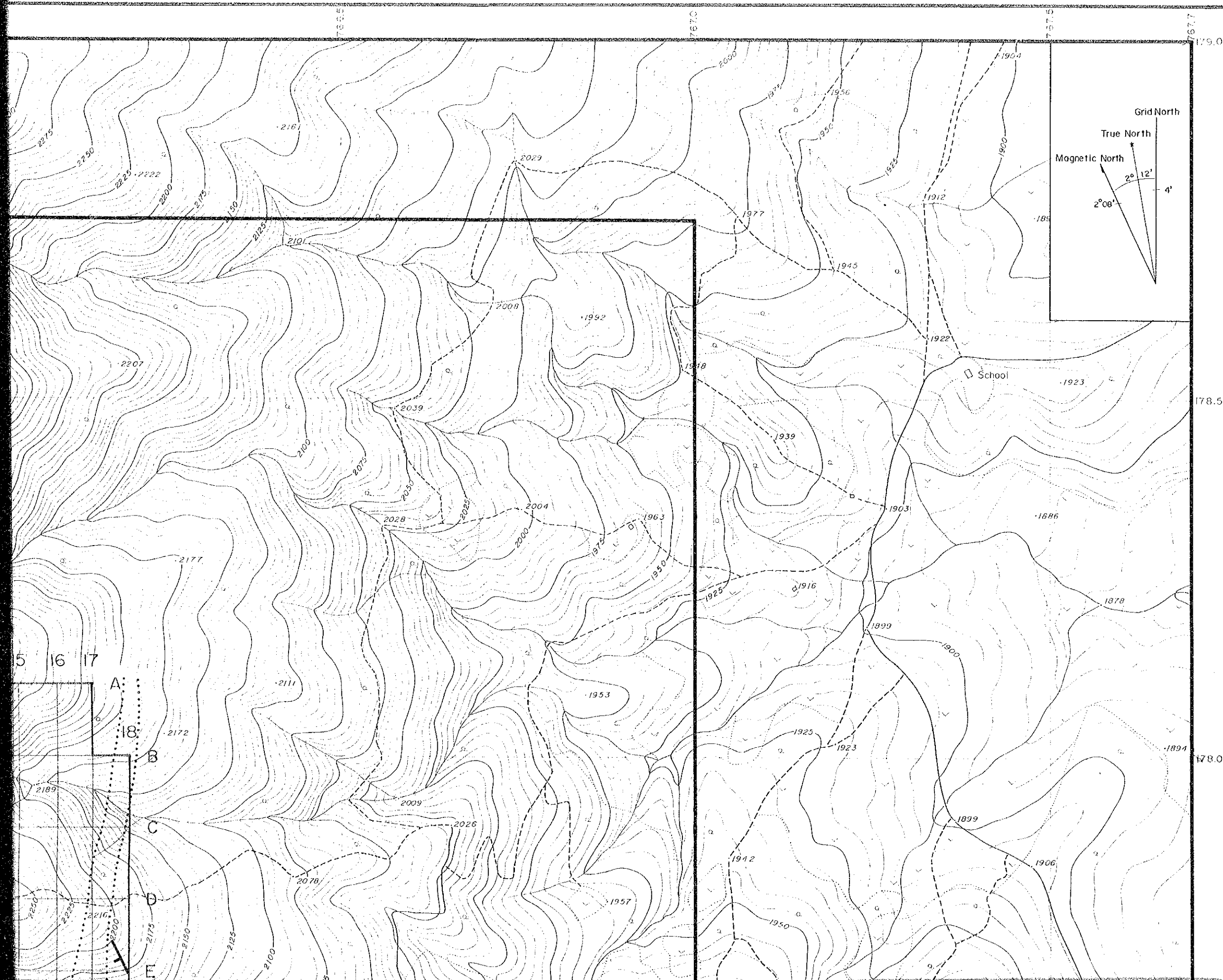
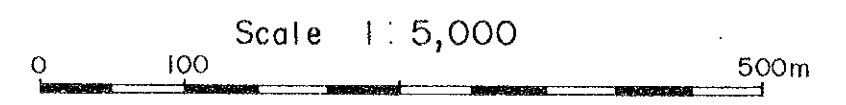
INTERPRETATION MAP FOR THE RESULT OF  
GEOCHEMICAL SURVEY

DETAILED SURVEY AREA

LOCATION INDEX



JAPAN INTERNATIONAL COOPERATION AGENCY  
METAL MINING AGENCY OF JAPAN  
December 1984

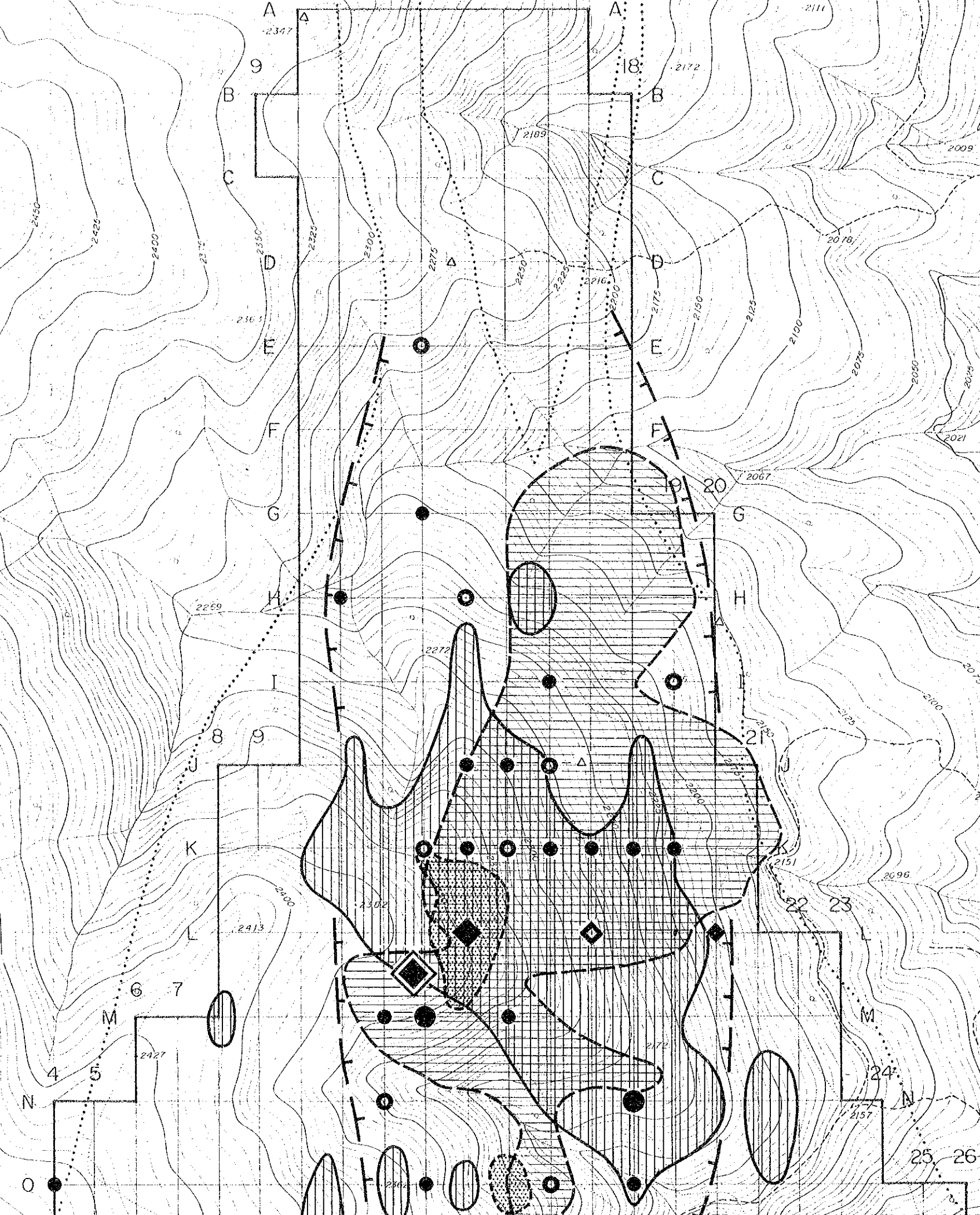


178.0

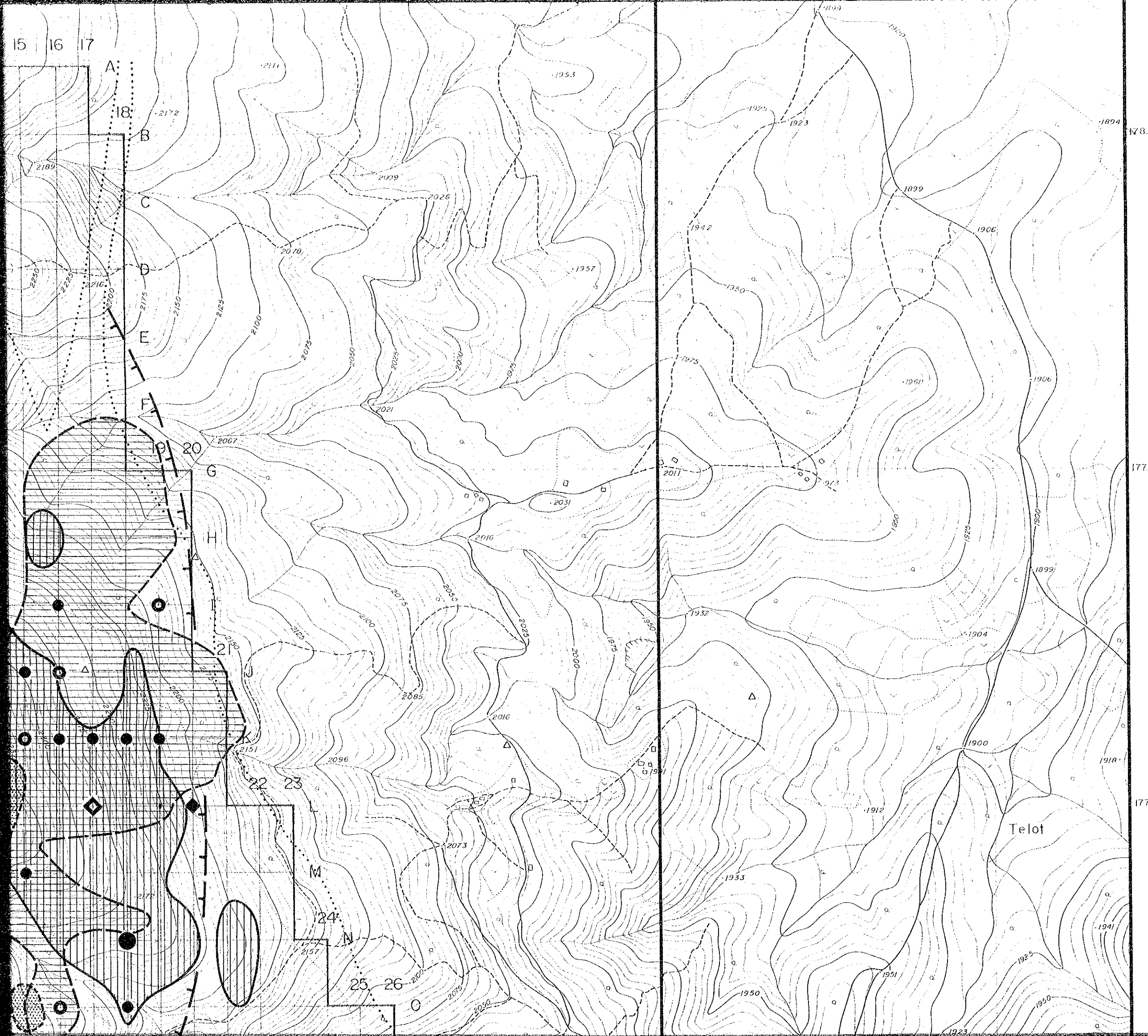
177.5

177.0

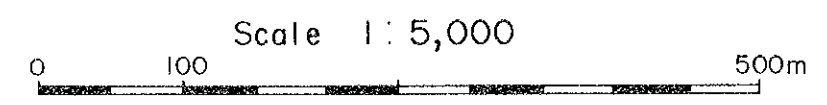
10 11 12 13 14 15 16 17







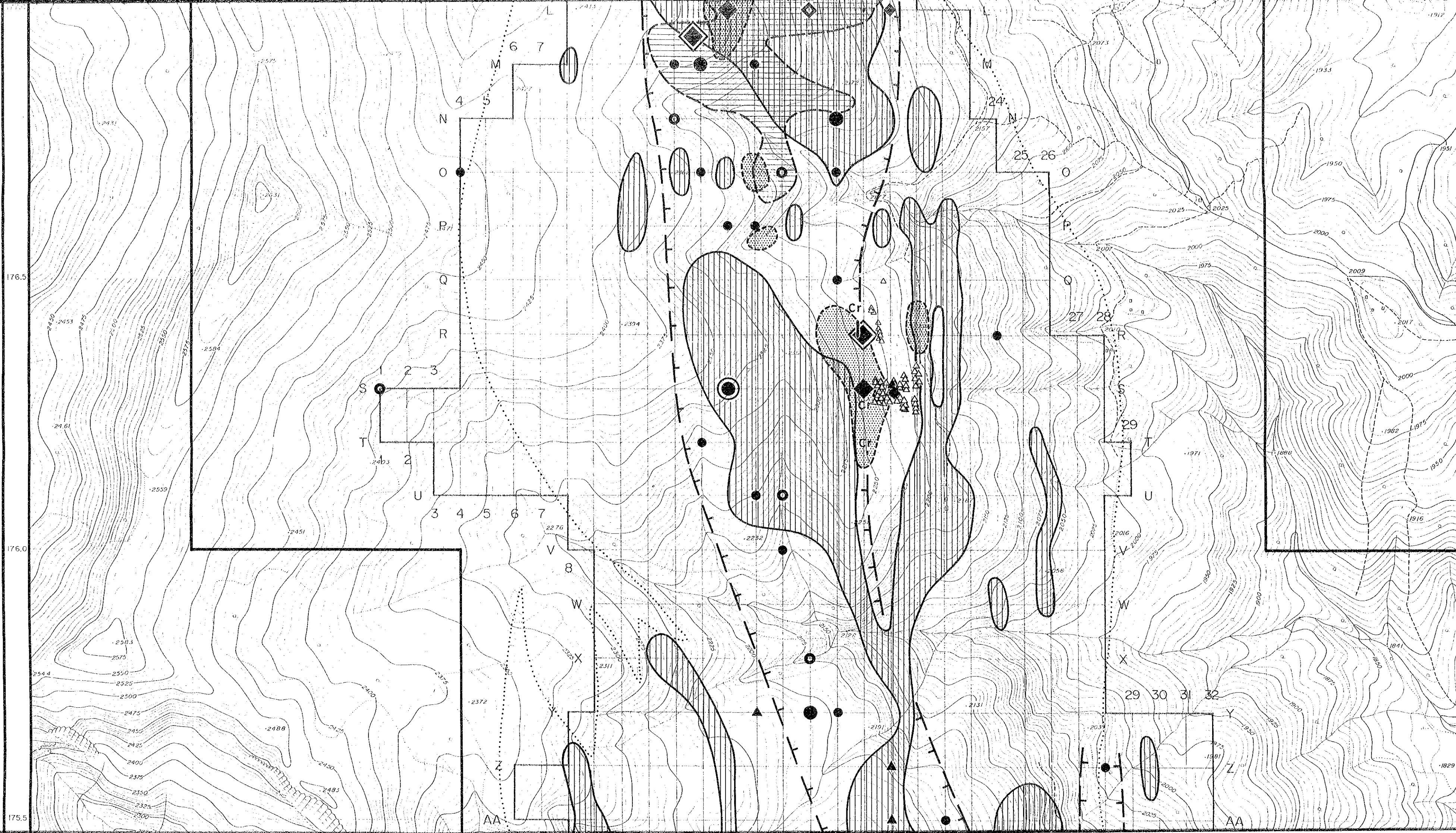
JAPAN INTERNATIONAL COOPERATION AGENCY  
METAL MINING AGENCY OF JAPAN  
December 1984



### LEGEND

unit : ppm

ELEMENT	Grade	ANOMALIES	HIGH-BACKGROUND VALUE
Au (max = 0.75)	AA	● ≥ 0.75 (n=1)	
	A	0.75 > ● ≥ 0.40 (n=3)	0.12 > ● ≥ 0.01 (n=29)
	B	0.40 > ● ≥ 0.12 (n=12)	
Ni (max = 10,000)	AA	◆ ≥ 8,811 (n=3)	
	A	8,811 > ◆ ≥ 7,128 (n=3)	5,370 > ◆ ≥ 4,665 (n=3)
	B	7,128 > ◆ ≥ 5,370 (n=1)	
Cr (max = 5,500)	No anomalies		6,150 > ▲ ≥ 4,762 (n=12)



176.5

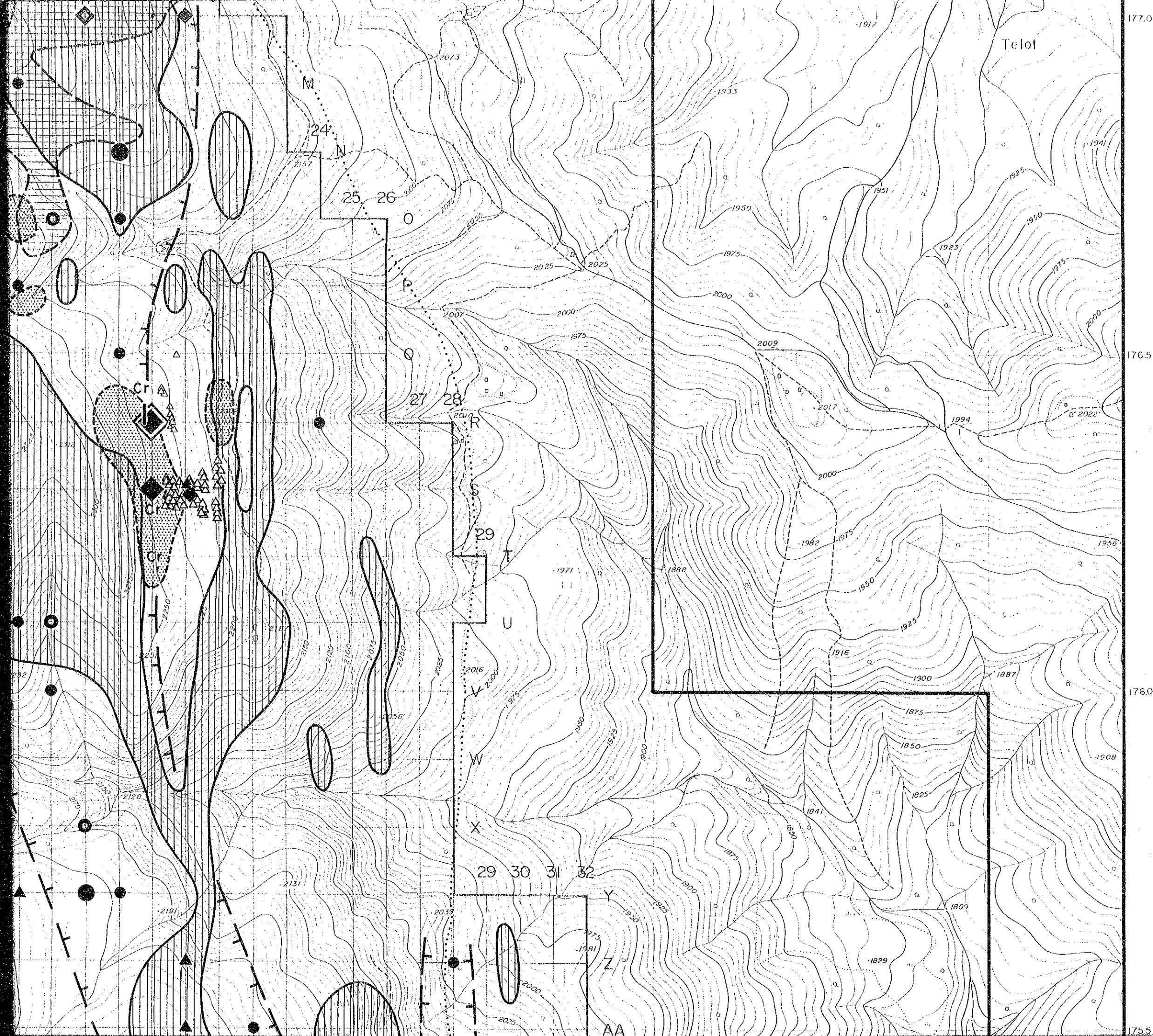
176.0

175.5

AA

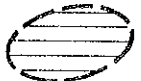



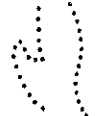
AA





Ni (max = 10,000)	A	8,811 > $\blacklozenge$ $\geq$ 7,128 (n=3)	5,370 > $\blacklozenge$ $\geq$ 4,665 (n=3)
	B	7,128 > $\blacklozenge$ $\geq$ 5,370 (n=1)	
Cr (max = 5,500)	No anomalies		6,150 > $\blacktriangle$ $\geq$ 4,762 (n=12)

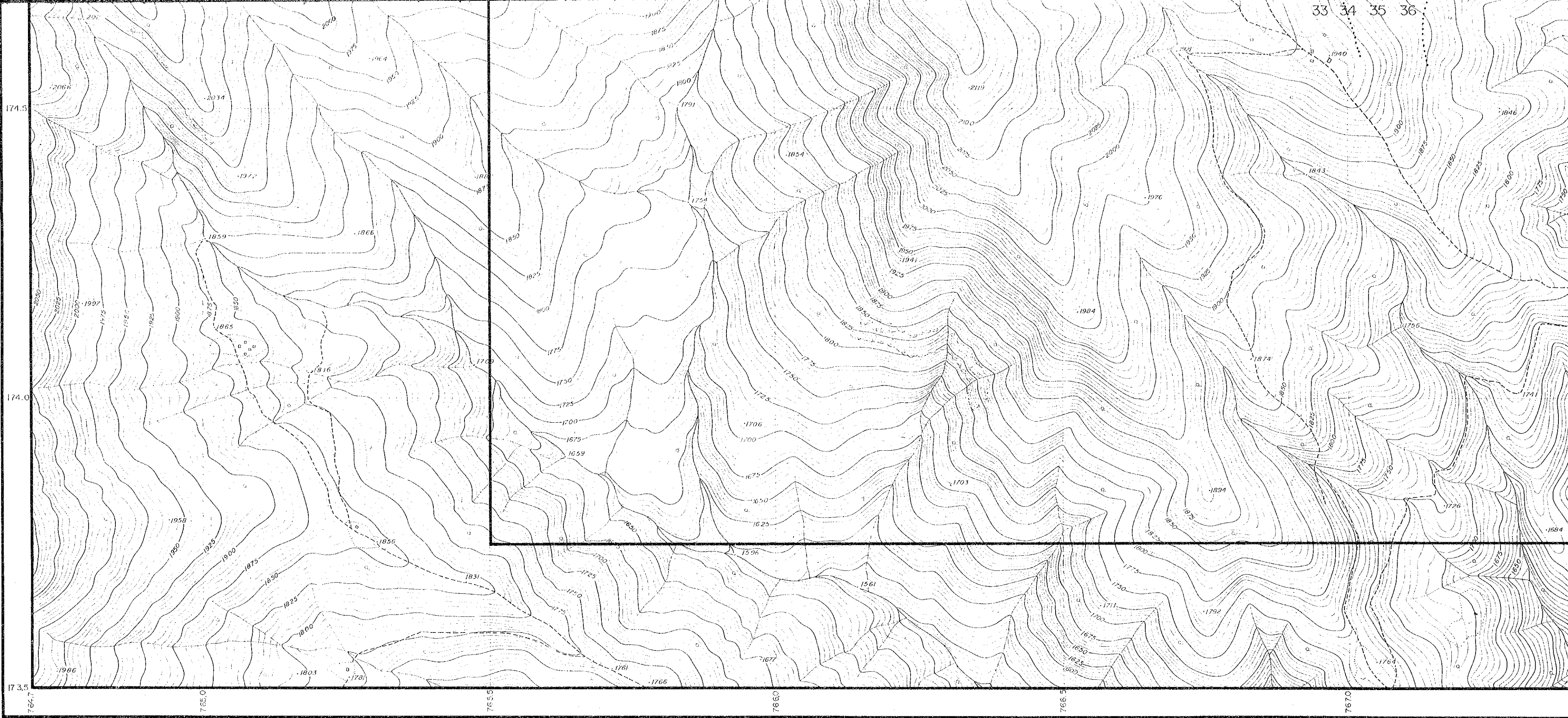
(n) Number of Samples

-  Digged area for eluvial gold
-  Silicified rock zone
-  Area of nickel mineralization observed
- Cr/** Chromite ore deposit
- $\Delta$  Floats and stockpile of chromite
-  Inferred zone of gold mineralization
-  Outline of Telot serpentinite body with talc schist



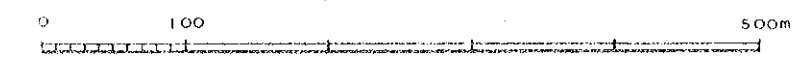




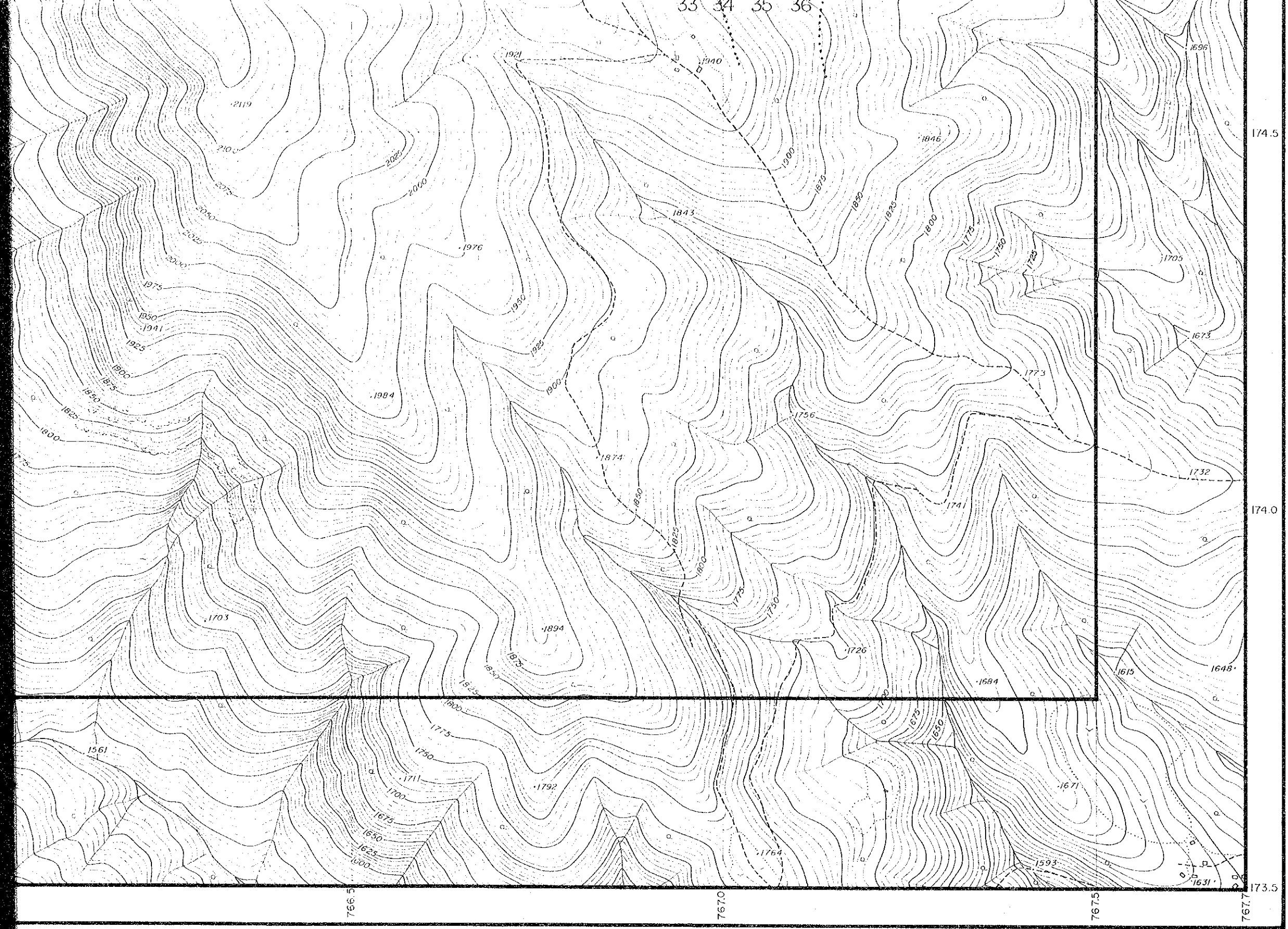


33 34 35 36

1:5,000



COOPER  
IN THE K  
AUTHOR



1:5,000

500m

COOPERATIVE MINERAL EXPLORATION  
IN THE KERIO VALLEY DEVELOPMENT  
AUTHORITY AREA