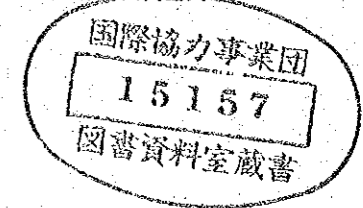


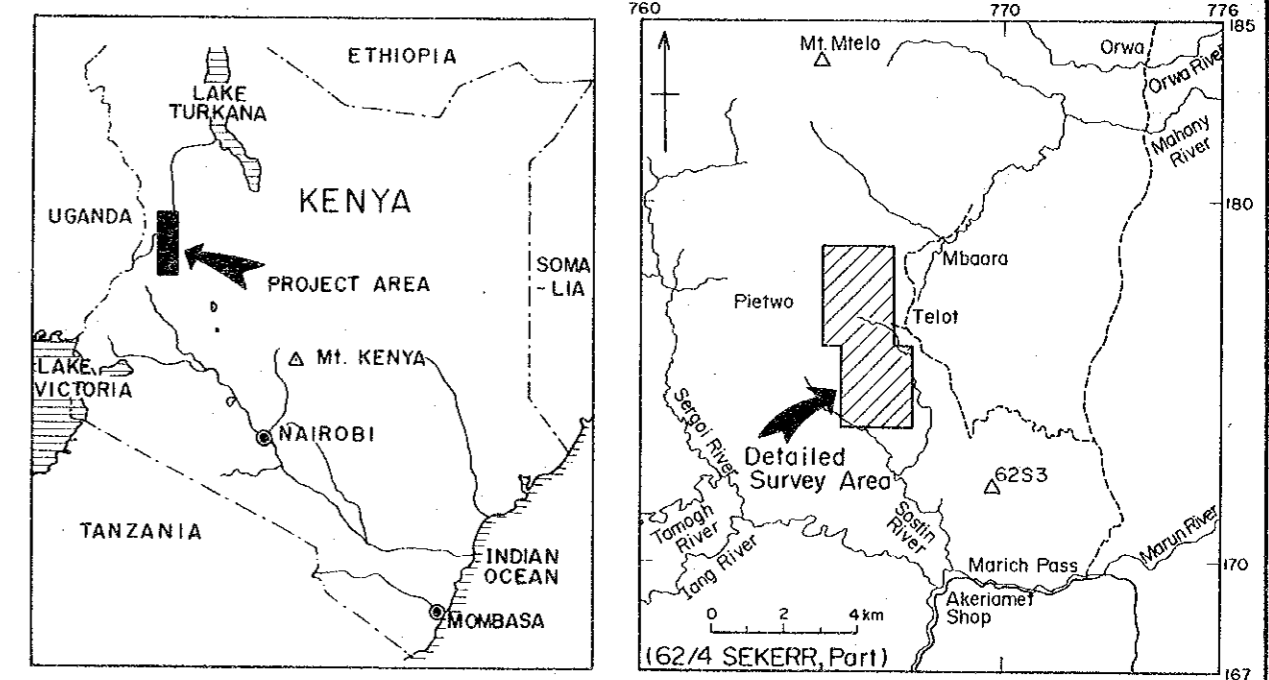
MINERAL EXPLORATION  
IN  
THE KERIO VALLEY DEVELOPMENT AUTHORITY AREA  
(PHASE II)



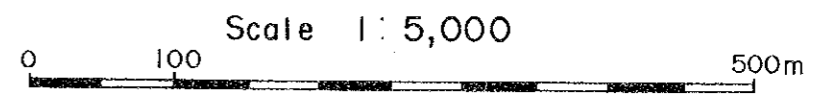
GEOLOGICAL MAP

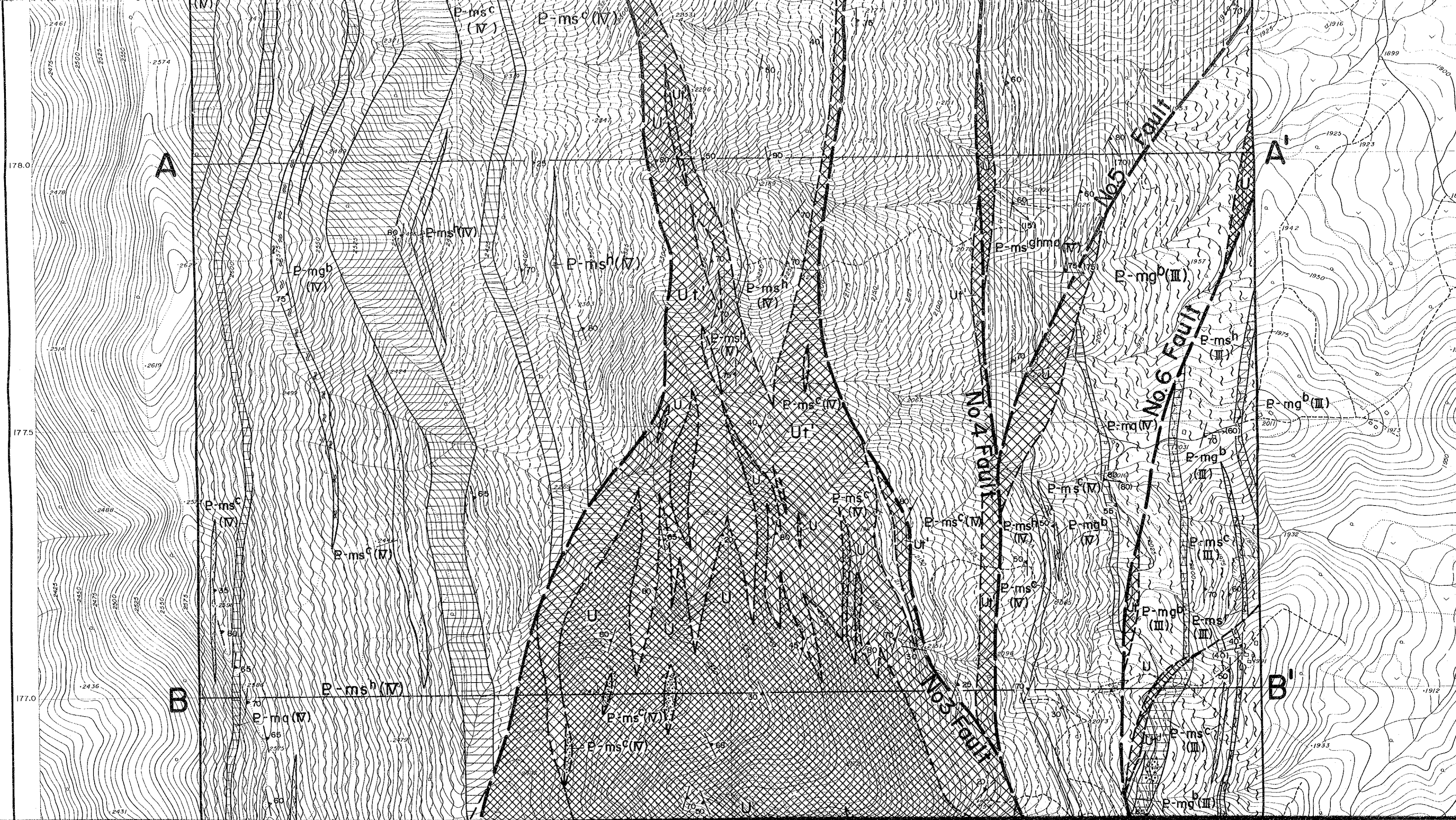
DETAILED SURVEY AREA

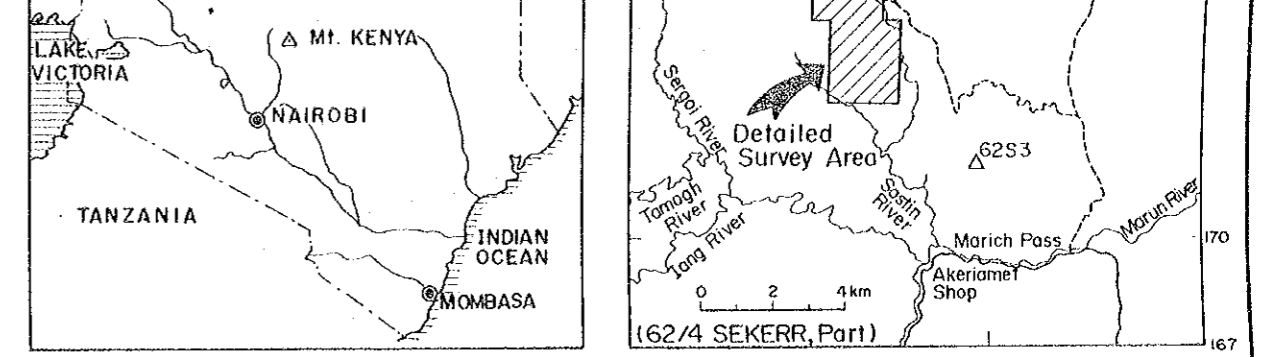
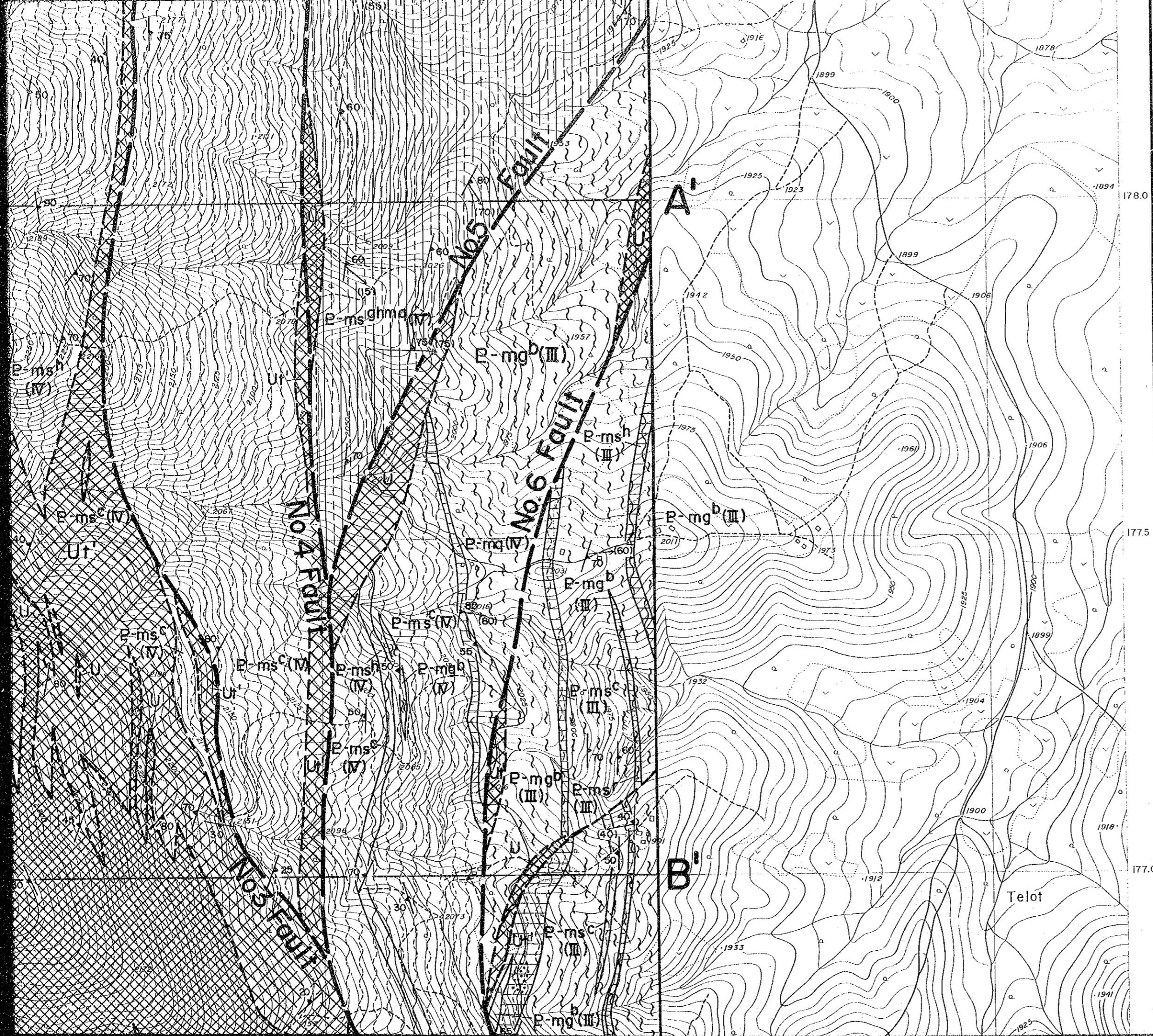
LOCATION INDEX



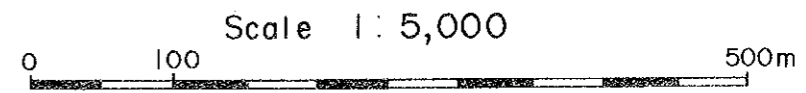
JAPAN INTERNATIONAL COOPERATION AGENCY  
METAL MINING AGENCY OF JAPAN  
December 1984







JAPAN INTERNATIONAL COOPERATION AGENCY  
 METAL MINING AGENCY OF JAPAN  
 December 1984



### LEGEND

Mozambique belt rocks (Proterozoic)	M I IV	P-ms <sup>c</sup> (IV)	Actinolite-chlorite schist, magnetite-chlorite schist (dotted part), including subordinate hornblende schist
		P-ms <sup>h</sup> (IV)	Hornblende schist, hornblende gneiss
		P-ms <sup>ghmq</sup> (IV)	Pophyroblastic garnet and hornblende-bearing muscovite-quartz schist
		P-mq(IV)	Quartzite, quartz schist, psammitic schist
		P-mg <sup>b</sup> (IV)	Biotite gneiss, hornblende-biotite gneiss with subordinate garnet-biotite schist
	M I III	P-ms <sup>c</sup> (III)	Actinolite-chlorite schist, magnetite-chlorite schist (dotted part), including subordinate hornblende schist
		P-ms <sup>h</sup> (III)	Hornblende schist, hornblende gneiss
		P-mq(III)	Quartzite
		P-mg <sup>b</sup> (III)	Biotite gneiss, muscovite-biotite gneiss

177.0  
176.5  
176.0

B

B'

C

C'

P-ms<sup>h</sup>(IV)

P-mq(IV)

P-ms<sup>c</sup>(IV)

P-ms<sup>c</sup>(IV)

P-ms<sup>c</sup>(IV)

P-mq(IV)

P-ms<sup>c</sup>(IV)

P-ms<sup>c</sup>(III)

P-mq(III)

P-mq(III)

P-mq(III)

P-ms<sup>c</sup>(III)

P-mq(IV)

P-ms<sup>c</sup>(IV)

P-ms<sup>c</sup>(IV)

P-ms<sup>c</sup>(IV)

P-ms<sup>c</sup>(IV)

P-ms<sup>c</sup>(IV)

P-ms<sup>c</sup>(IV)

P-ms<sup>c</sup>(IV)

P-ms<sup>c</sup>(IV)

P-ms<sup>c</sup>(IV)

P-ms<sup>c</sup>(IV)

P-ms<sup>c</sup>(IV)

P-ms<sup>c</sup>(IV)

P-ms<sup>c</sup>(IV)

P-ms<sup>c</sup>(IV)

P-mq(IV)

P-ms<sup>c</sup>(IV)

P-ms<sup>c</sup>(IV)

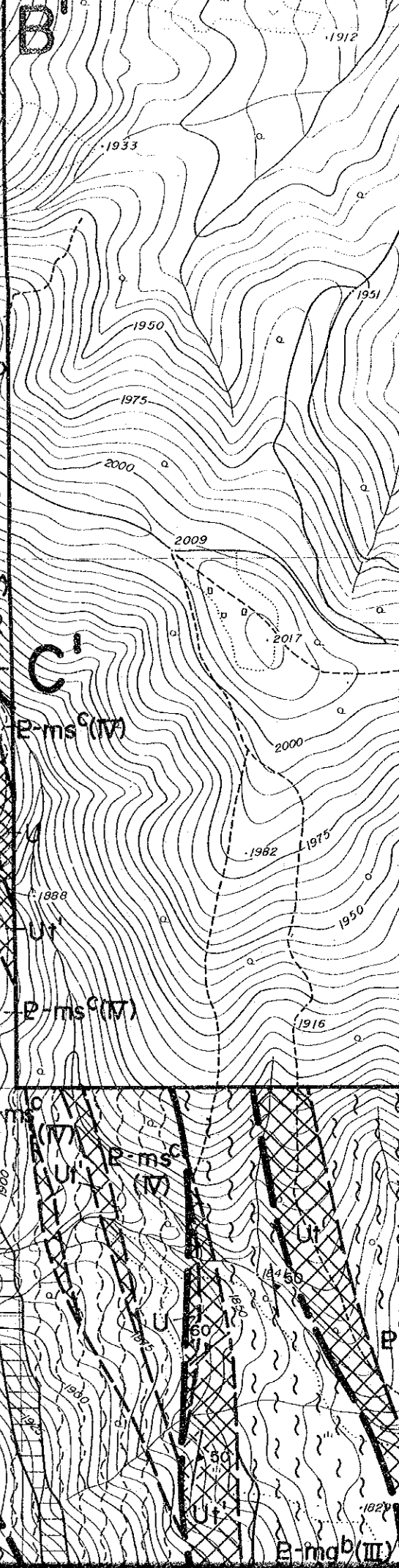
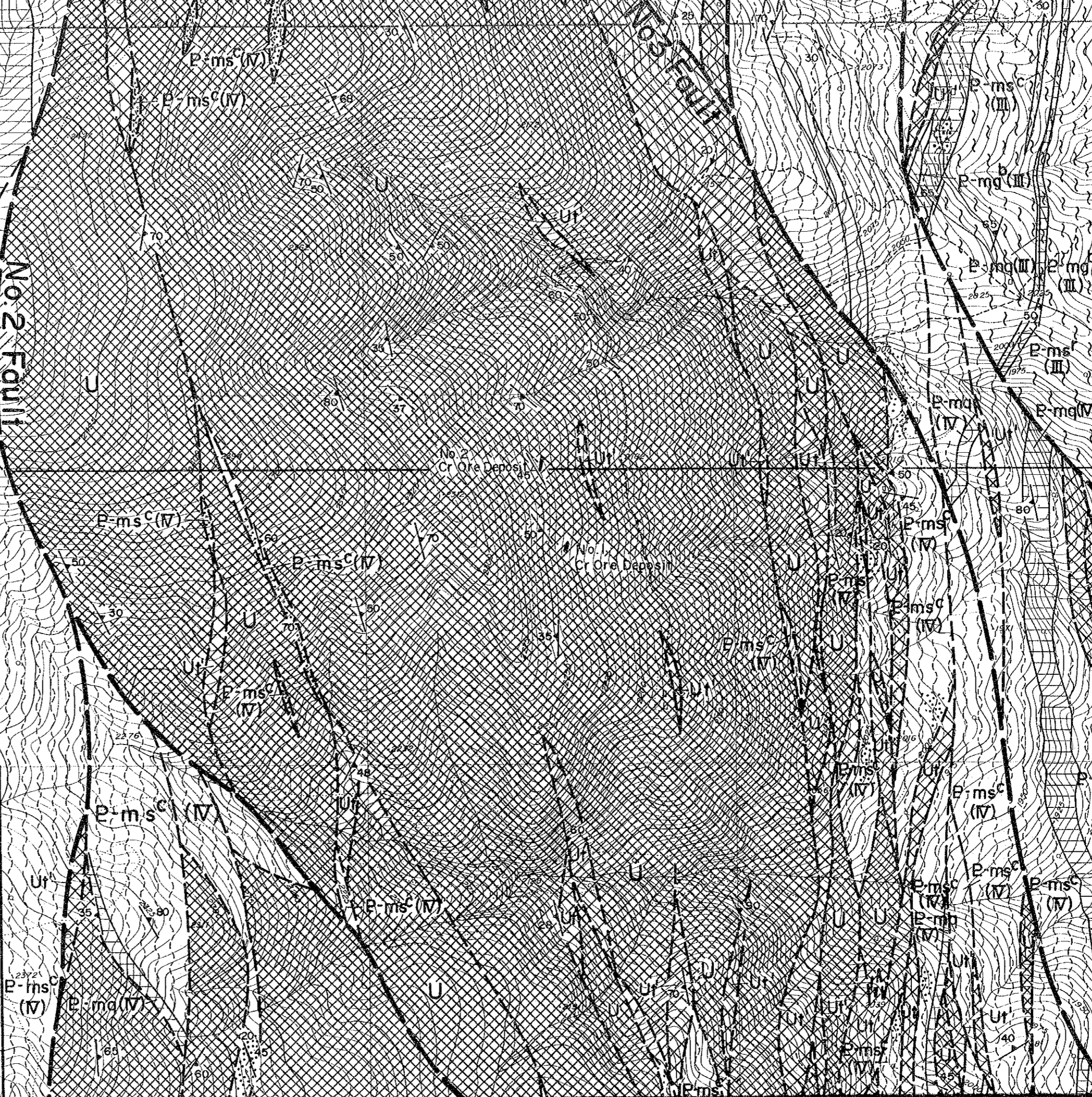
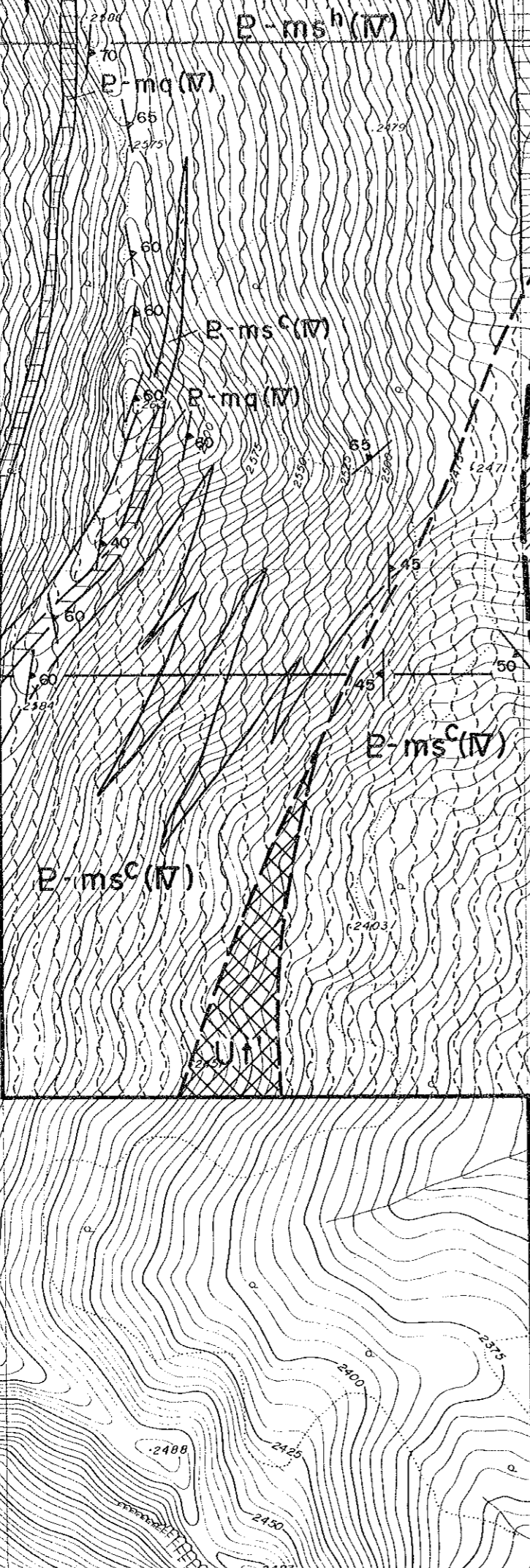
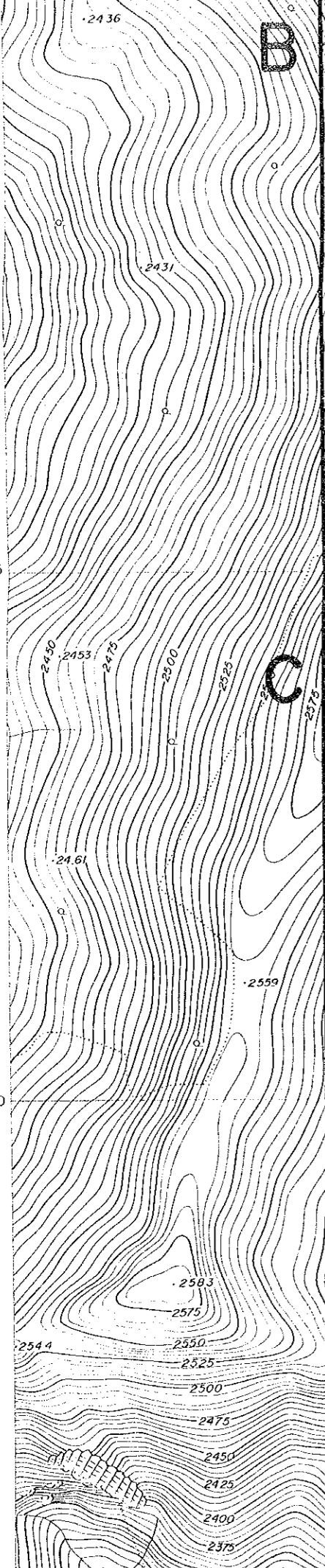
P-ms<sup>c</sup>(IV)

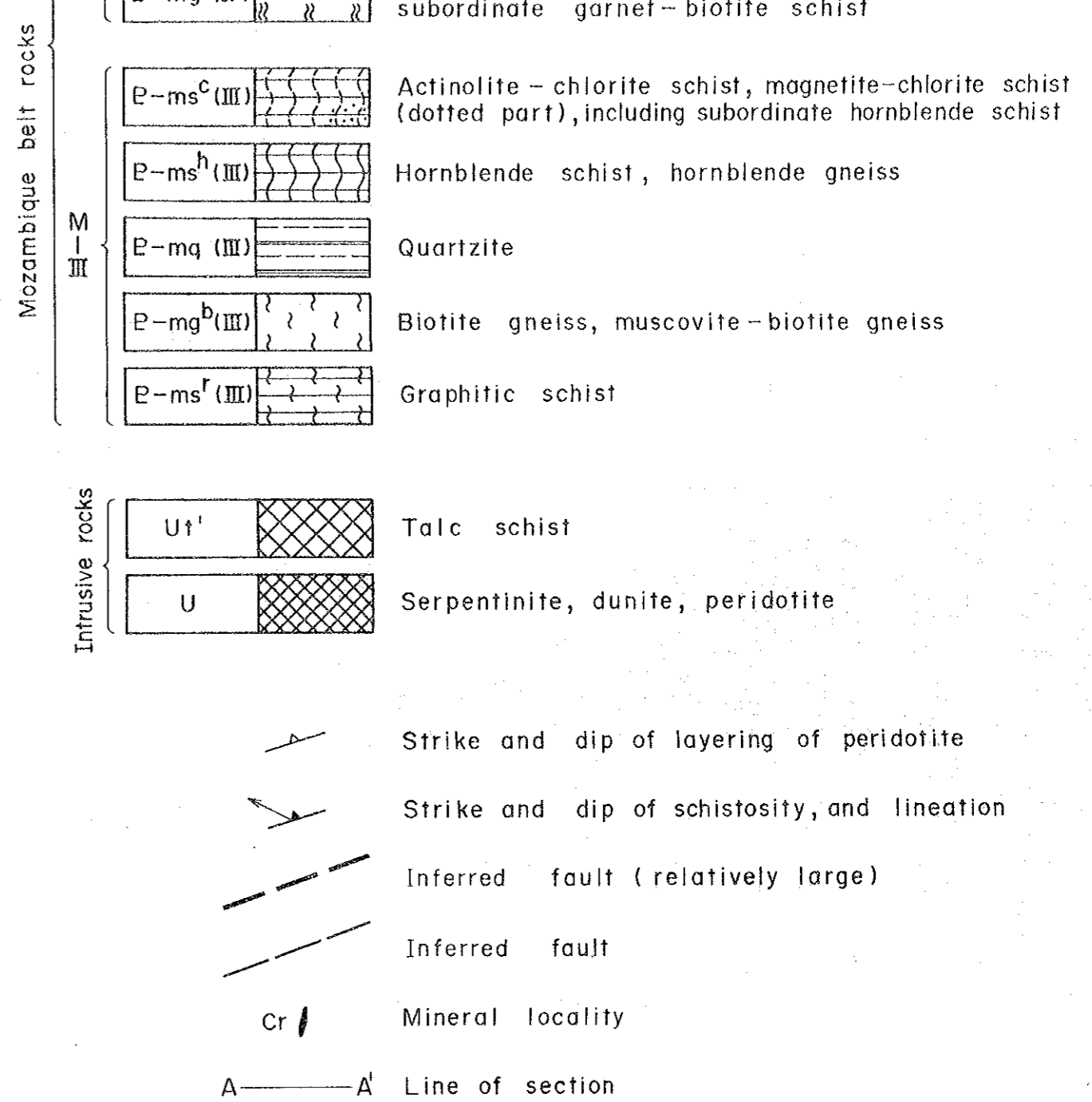
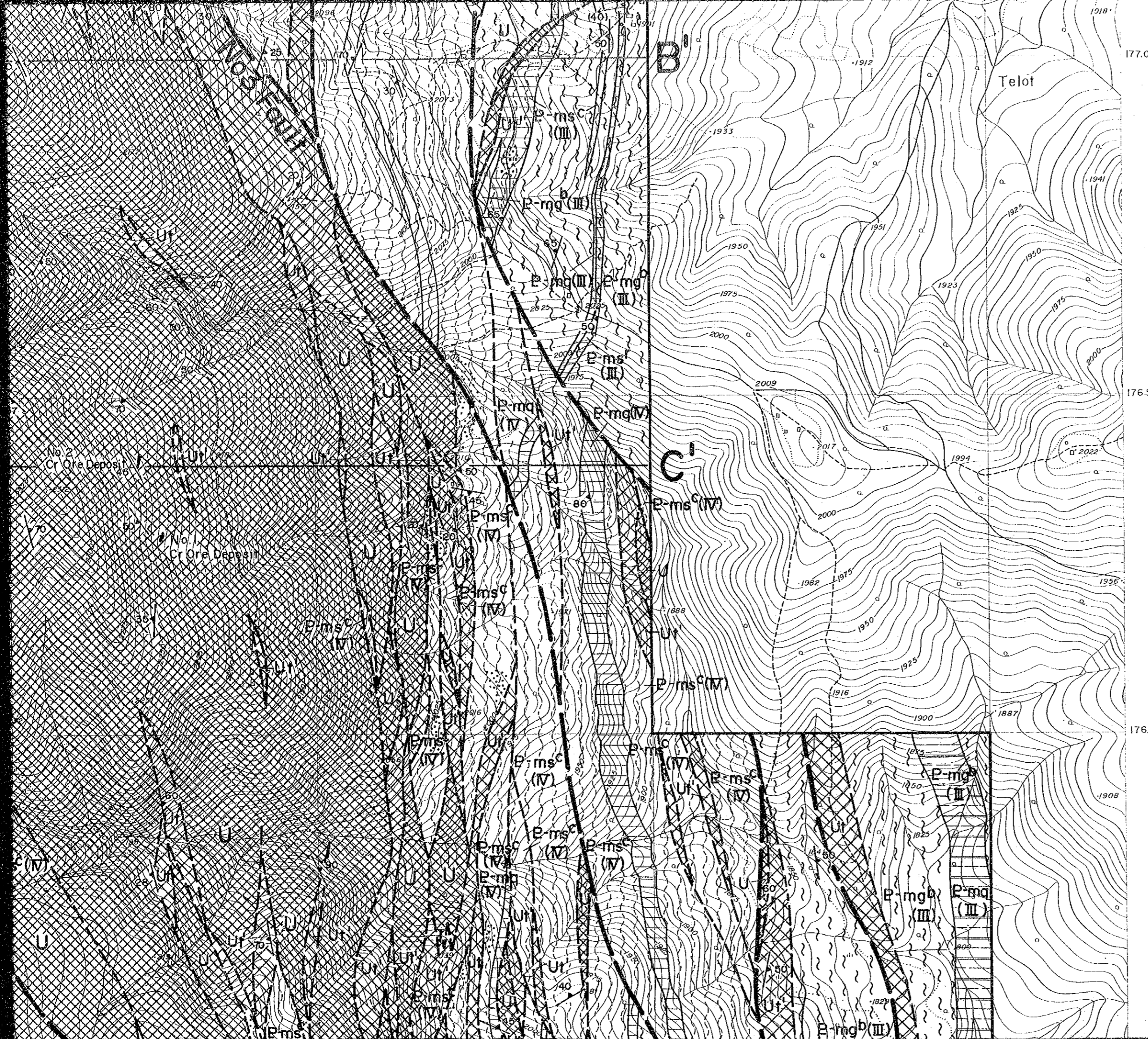
P-mqb(III)

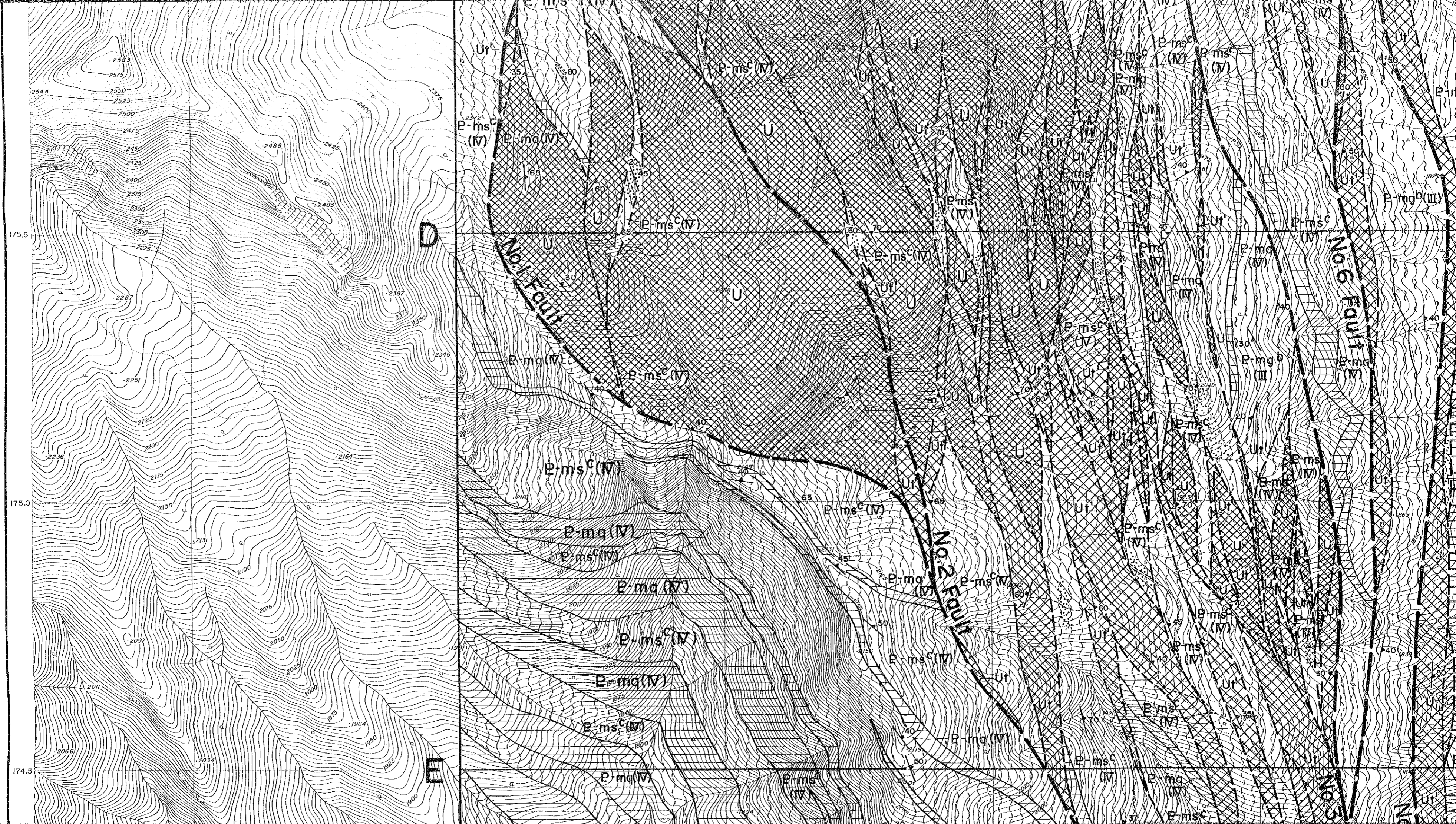
No 2 Fault

No 2 Cr Ore Depos

No 2 Cr Ore Depos

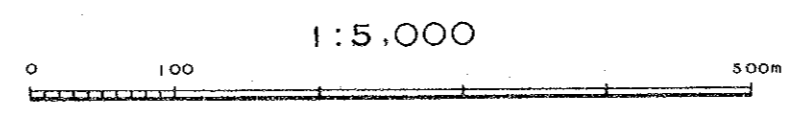
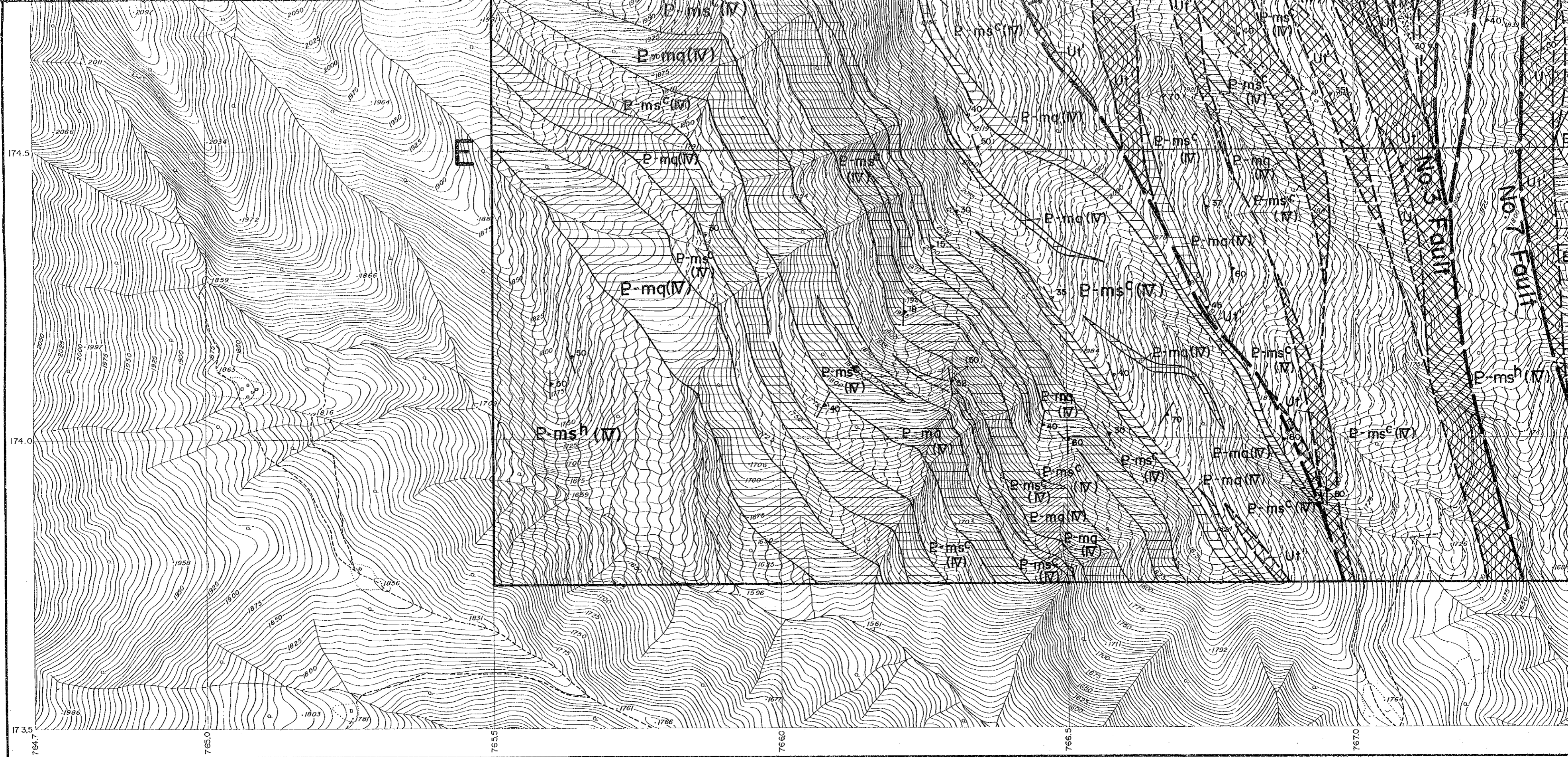




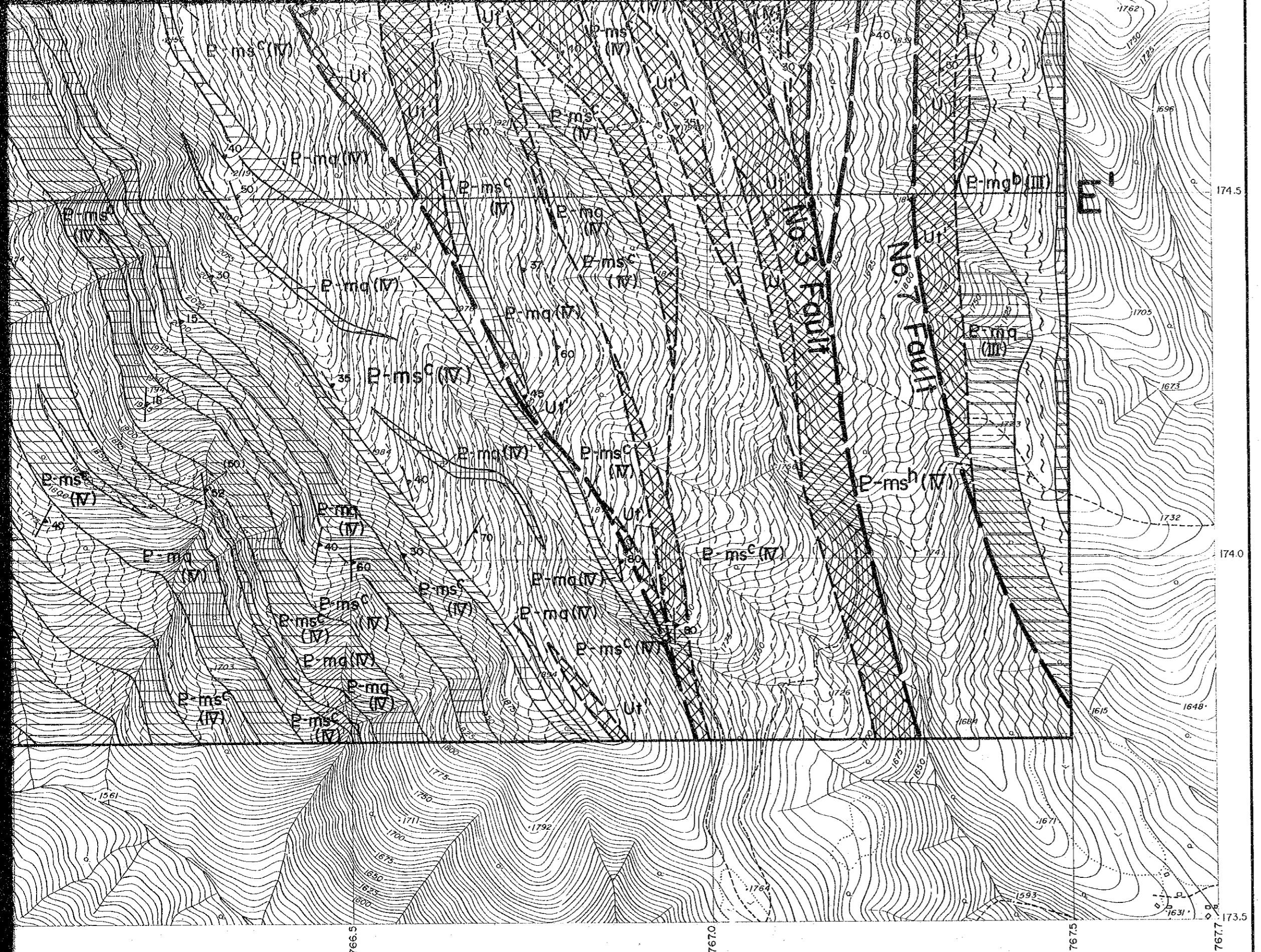




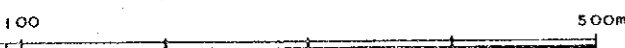




COOPER  
IN THE  
AUTHOR



1:5,000



COOPERATIVE MINERAL EXPLORATION  
IN THE KERIO VALLEY DEVELOPMENT  
AUTHORITY AREA