

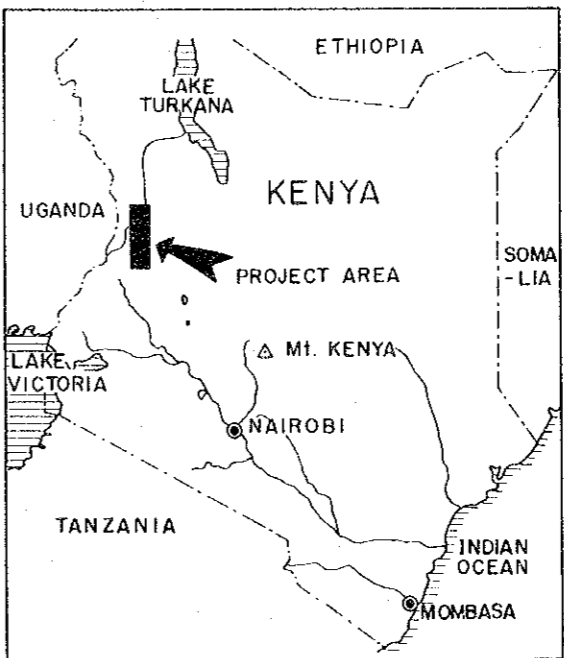
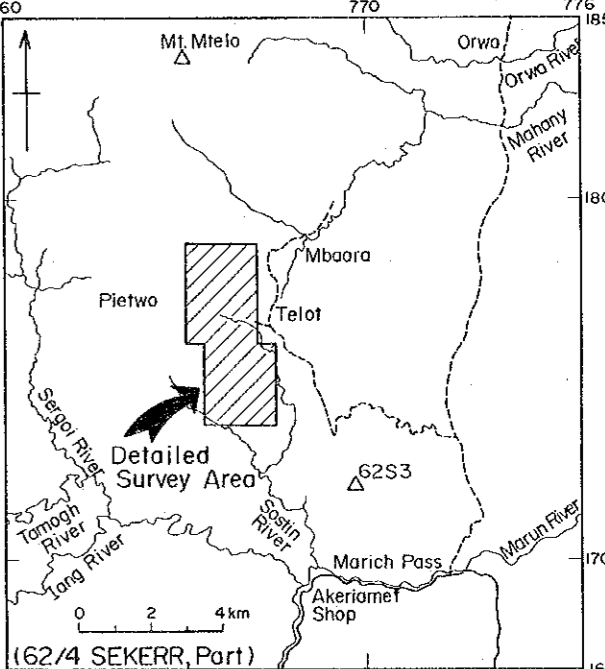
国際協力事業団 PL. 2-1
15157
図書資料室蔵書

MINERAL EXPLORATION
IN
THE KERIO VALLEY DEVELOPMENT AUTHORITY AREA
(PHASE II)

GEOLOGICAL MAP (NORTHERN PART)


DETAILED SURVEY AREA

LOCATION INDEX

JAPAN INTERNATIONAL COOPERATION AGENCY
METAL MINING AGENCY OF JAPAN
December 1984

Scale 1 : 2,500



178.0

177.5

A

2478

2514

2619

2627

2489

P-mgb (IV)

P-msh (IV)

P-msh (IV)

2575

2550

2525

2500

2425

2400

2350

2303

80

2499

2424

b

2296

2347

2319

80

50

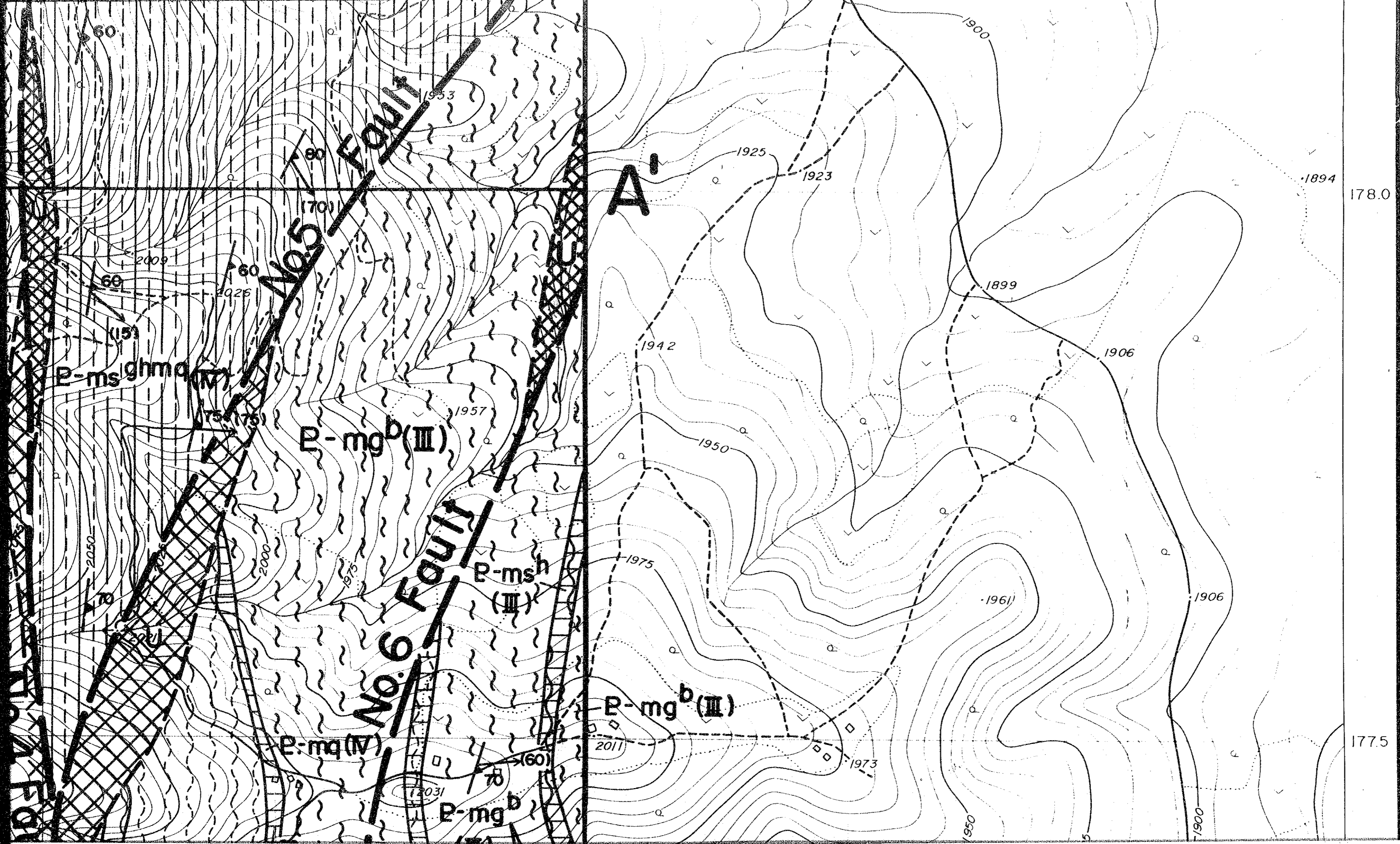
2000

U1

U1

U1

U1



Mozambique belt rocks (Proterozoic)

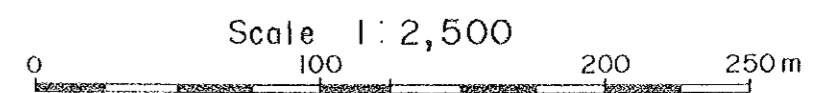
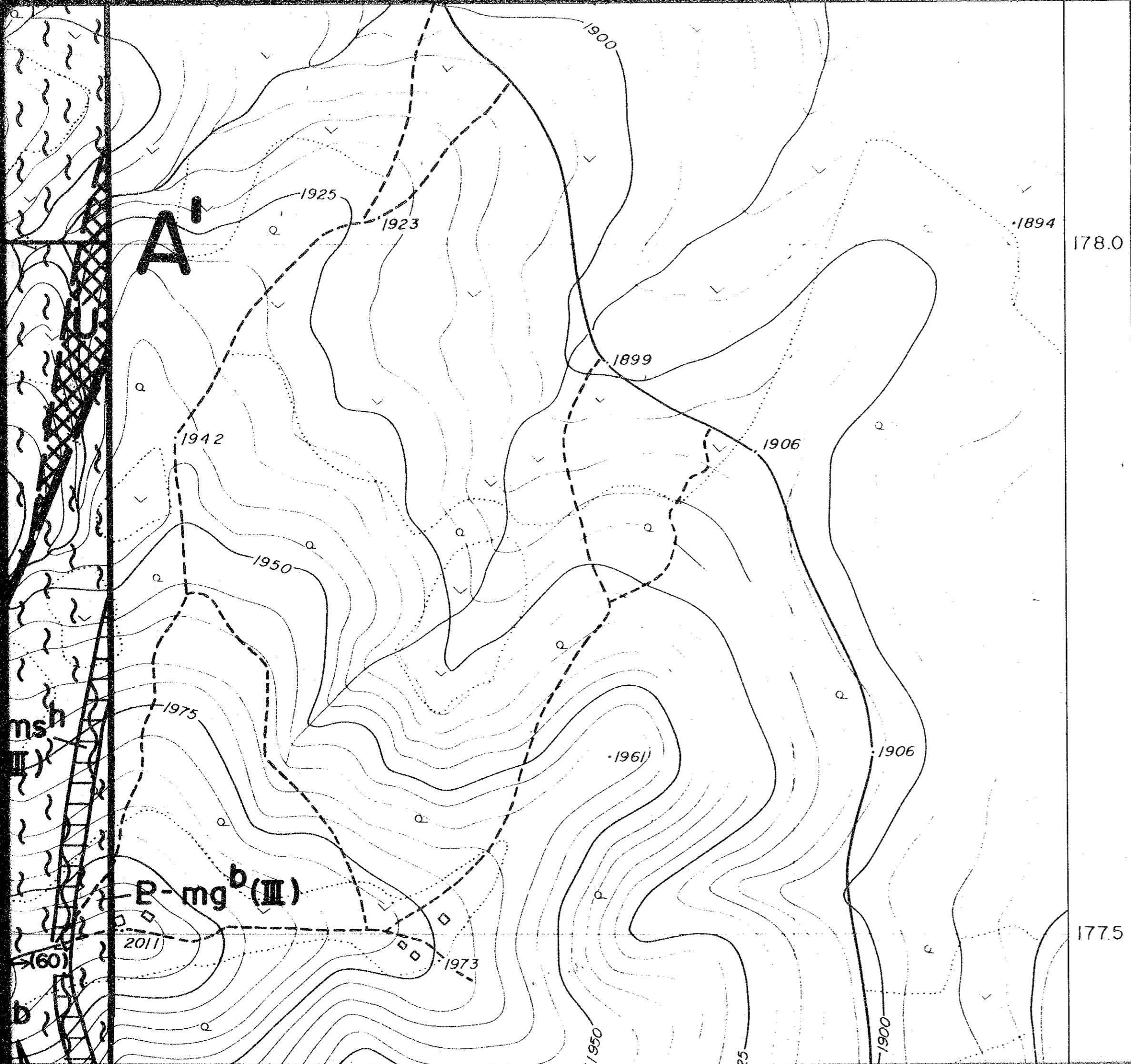
- M-IV {
 - P-ms^c ()
 - P-ms^h ()
 - P-ms^{gh} ()
 - P-mq ()
 - P-mg^b ()
- M-M {
 - P-ms^c ()
 - P-ms^h ()
 - P-mq ()
 - P-mg^b ()
 - P-ms^f ()

Intrusive rocks

- Ut'
- U

178.0

177.5

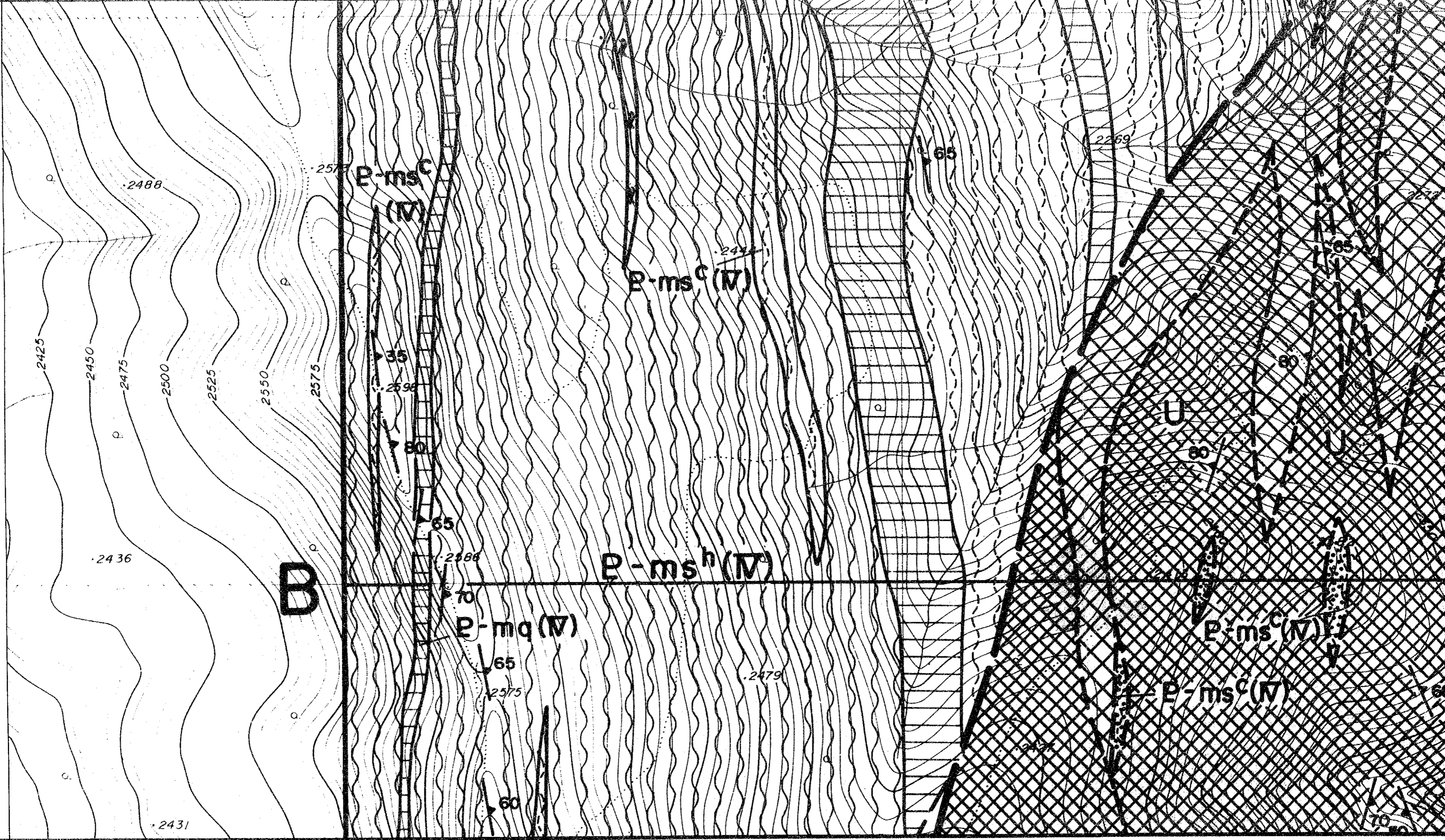


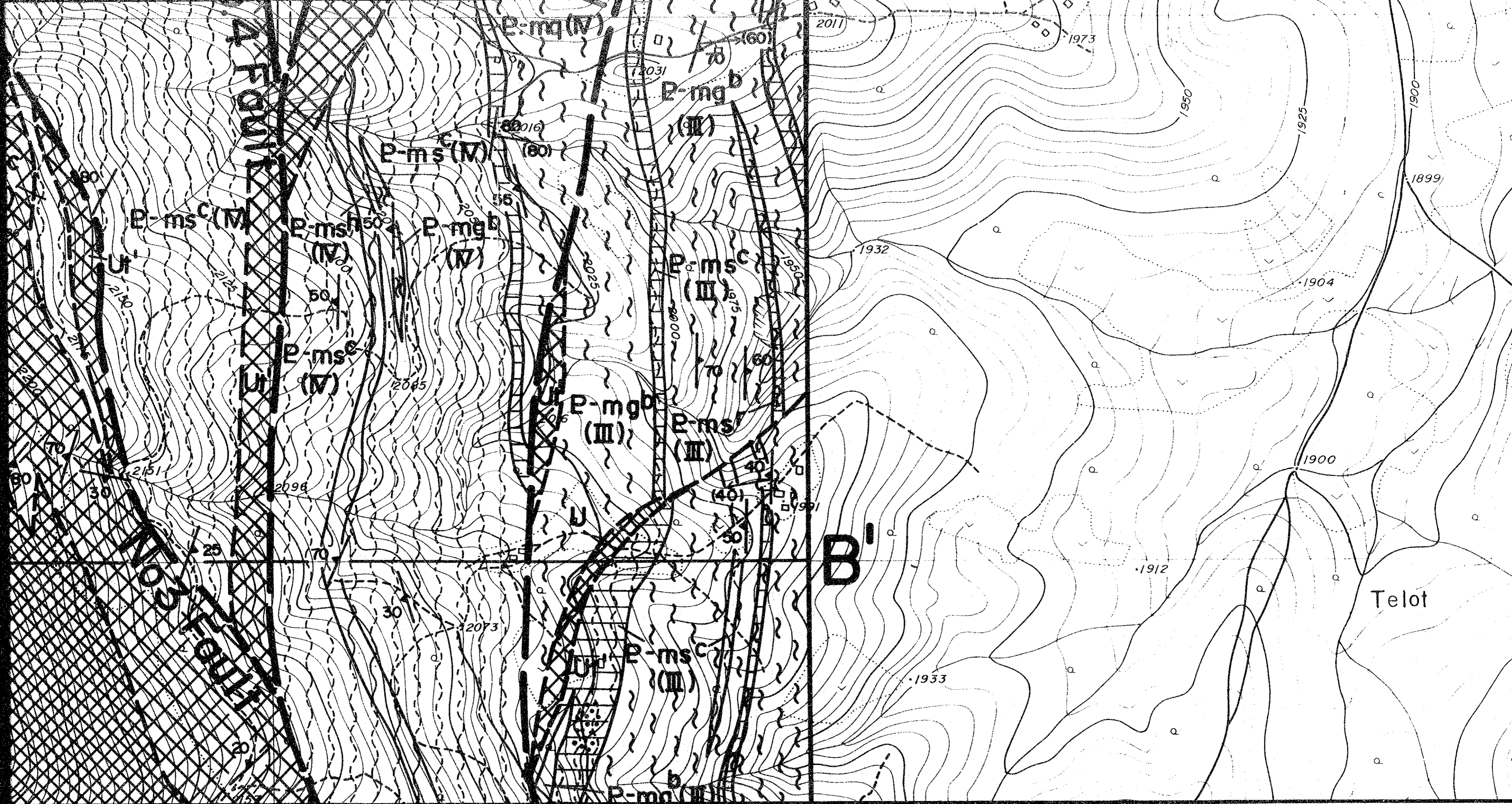
LEGEND

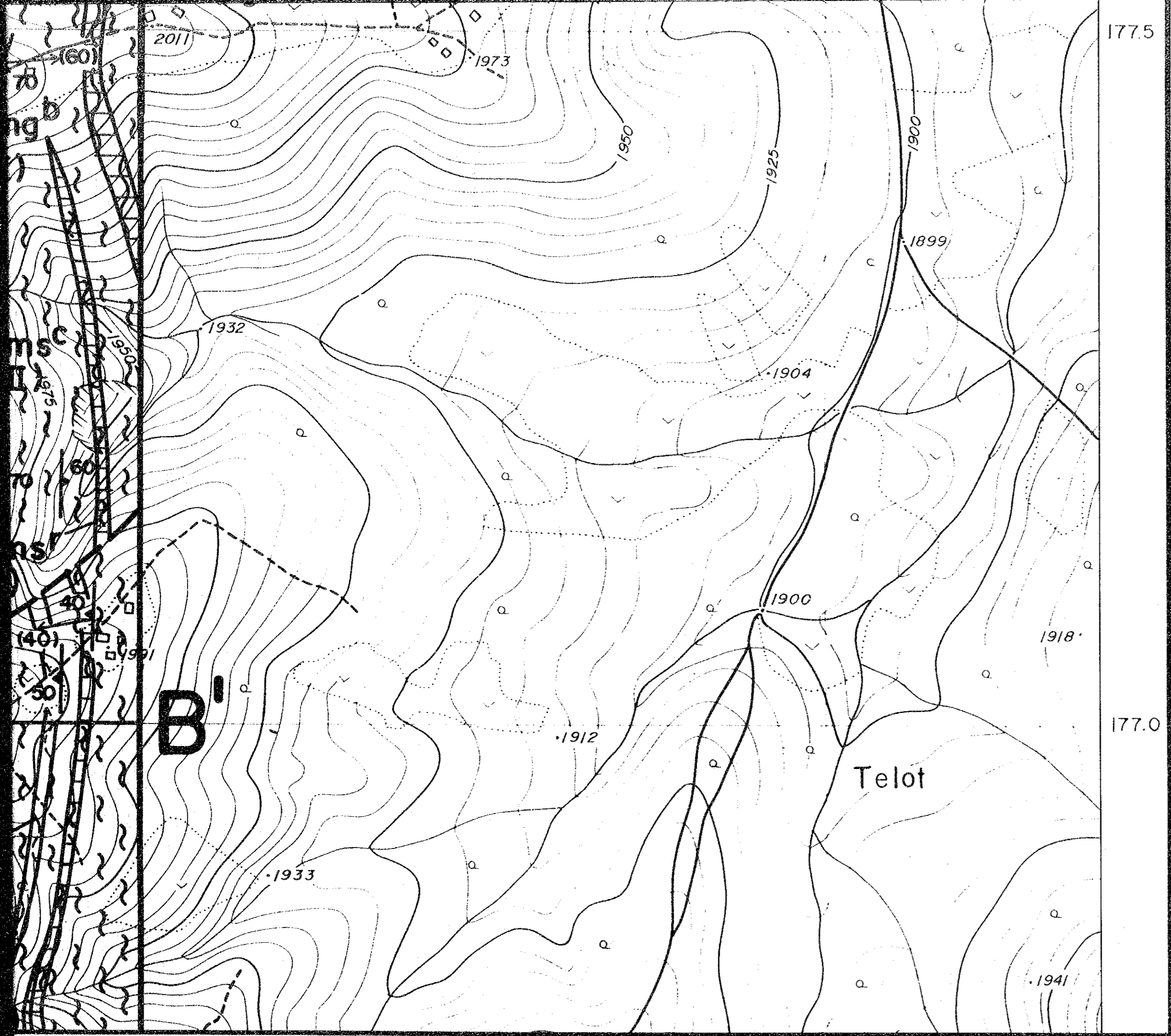
Mozambique belt rocks (Proterozoic)	M-IV		P-ms ^c (IV)	Actinolite-chlorite schist, magnetite-chlorite schist (dotted part), including subordinate hornblende schist
			P-ms ^h (IV)	Hornblende schist, hornblende gneiss
			P-ms ^{ghmq} (IV)	Pophyroblastic garnet and hornblende-bearing muscovite-quartz schist
			P-mq(IV)	Quartzite, quartz schist, psammitic schist
			P-mg ^b (IV)	Biotite gneiss, hornblende-biotite gneiss with subordinate garnet-biotite schist
	M-III		P-ms ^c (III)	Actinolite-chlorite schist, magnetite-chlorite schist (dotted part), including subordinate hornblende schist
			P-ms ^h (III)	Hornblende schist, hornblende gneiss
			P-mq(III)	Quartzite
			P-mg ^b (III)	Biotite gneiss, muscovite-biotite gneiss
			P-ms ^r (III)	Graphitic schist
Intrusive rocks		Ut'	Talc schist	
		U	Serpentinite, dunite, peridotite	
			Strike and dip of layering of peridotite	
			Strike and dip of schistosity, and lineation	
			Inferred fault (relatively large)	

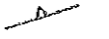



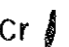
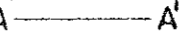
177.5

177.0







-  Strike and dip of layering of peridotite
-  Strike and dip of schistosity, and lineation
-  Inferred fault (relatively large)
-  Inferred fault
-  Mineral locality
-  Line of section