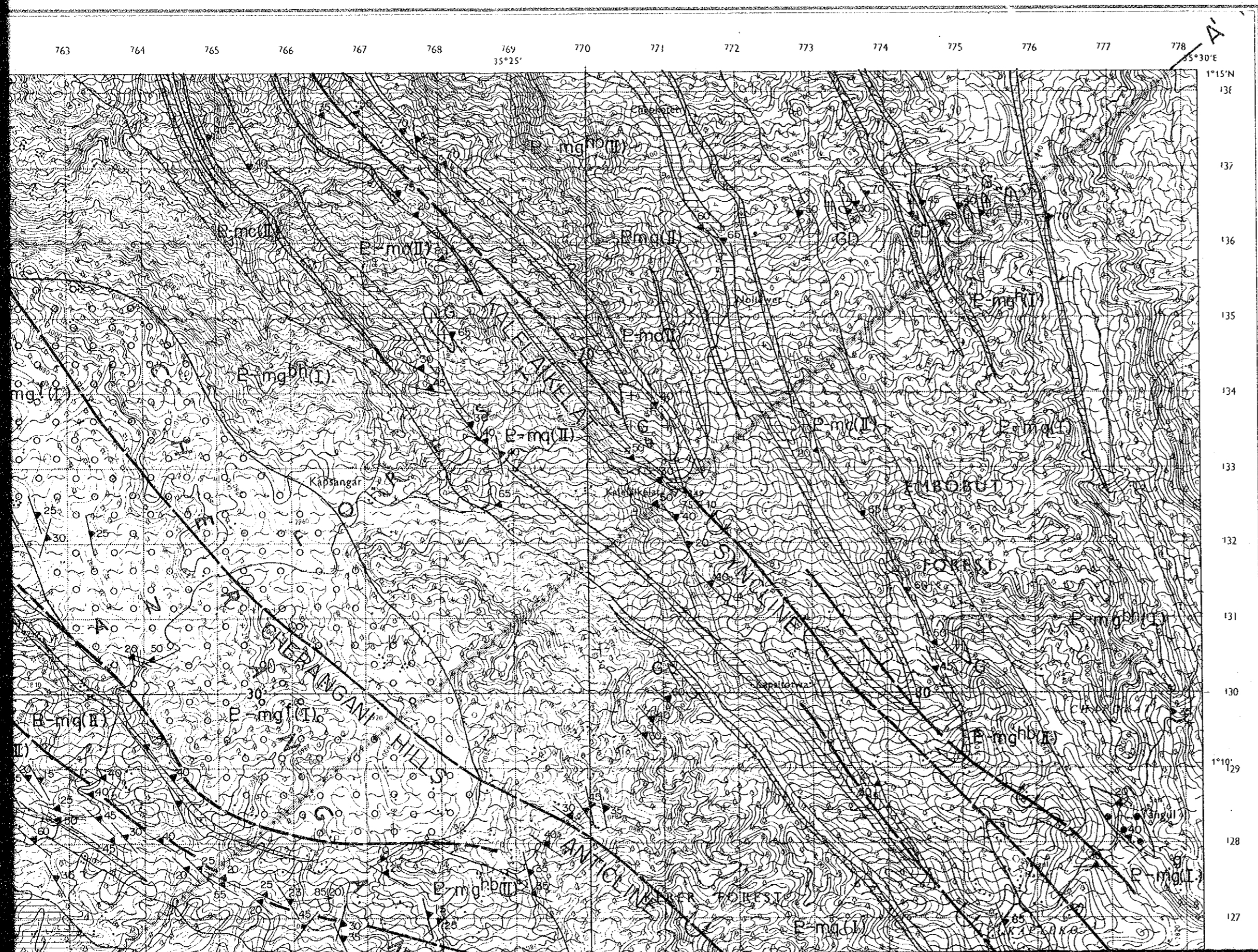


CHERANGANI

Series Y731(D.O.S 423)
 Sheet 75/4
 Edition 3-D.O.S. 1975



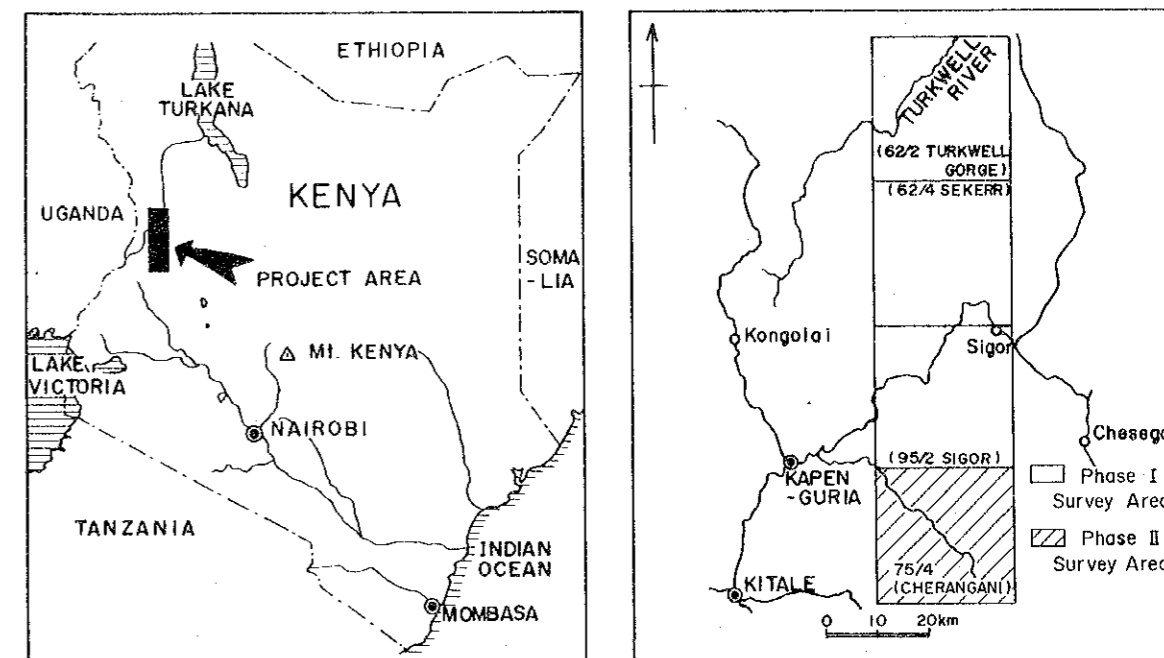
MINERAL EXPLORATION
 IN
 THE KERIO VALLEY DEVELOPMENT AUTHORITY AREA
 (PHASE II)

国際協力事業団
 15157
 図書資料室蔵書

GEOLOGICAL MAP AND SECTIONS (CHERANGANI)

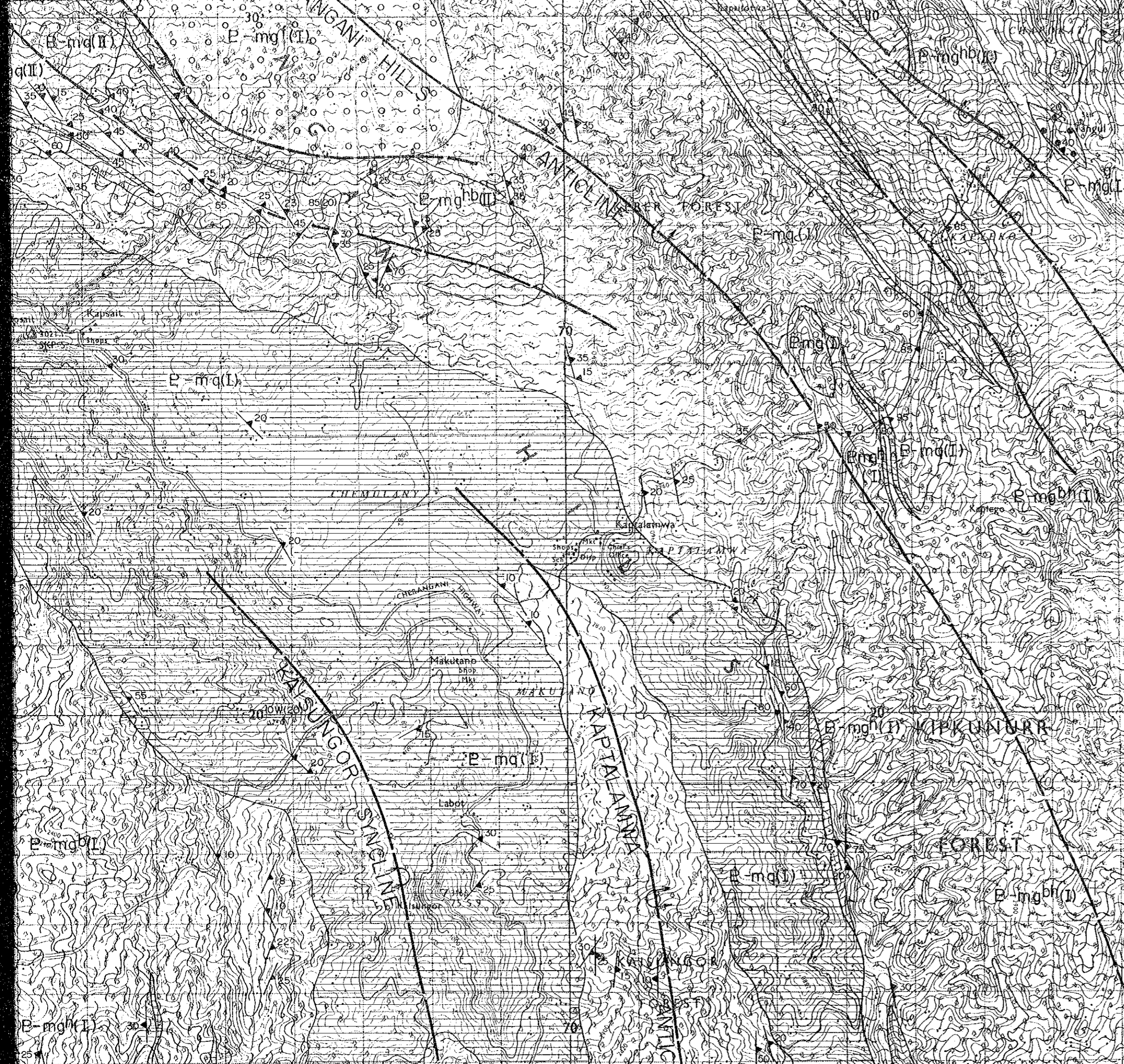
REGIONAL SURVEY AREA

LOCATION INDEX



JAPAN INTERNATIONAL COOPERATION AGENCY
 METAL MINING AGENCY OF JAPAN
 December 1984

Scale 1:50,000



TANZANIA

INDIAN OCEAN

MOMBASA

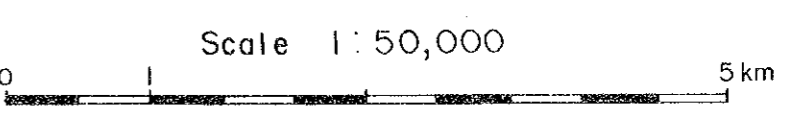
KITALE

75/A (CHERANGANI)

0 10 20km

Phase II Survey Area

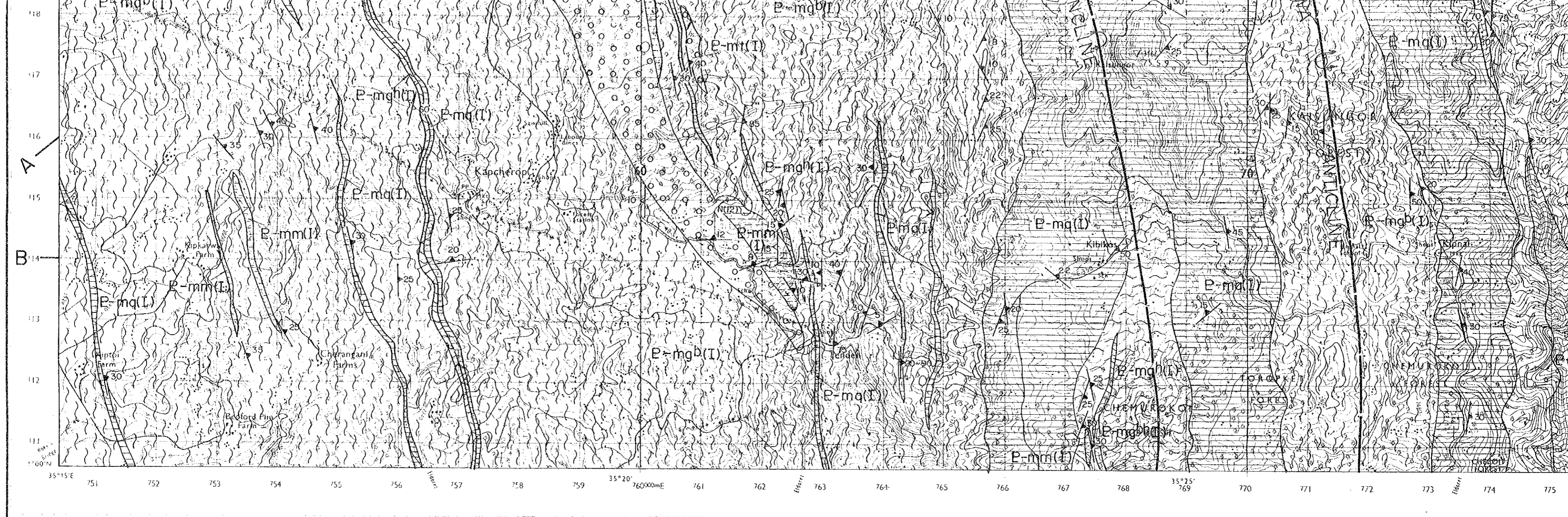
JAPAN INTERNATIONAL COOPERATION AGENCY
METAL MINING AGENCY OF JAPAN
December 1984



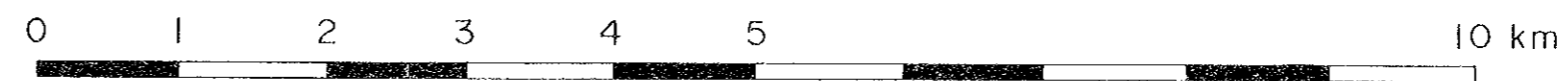
LEGEND

Mozambique Belt Rocks	M-II Formation	E-mg ^{hb} (II)	Hornblende gneiss with subordinate Biotite gneiss, Hornblende - biotite gneiss
		E-mq(II)	Quartzite
		E-mc(II)	Crystalline limestone
	M-I Formation	E-mg ^{hb} (I)	Biotite gneiss with subordinate hornblende-biotite gneiss
		E-mg ^b (I)	Biotite gneiss
		E-mq(I)	Quartzite
		E-mg ^h (I)	Hornblende gneiss
		E-mg ^f (I)	Potash-feldspar porphyroblast gneiss
		E-mg ^g (I)	Garnet porphyroblast gneiss
		E-mm(I)	Migmatite
	Intrusive Rocks	E-mt(I)	Calc-silicate granulite
		G	Granite
		GD	Granodiorite

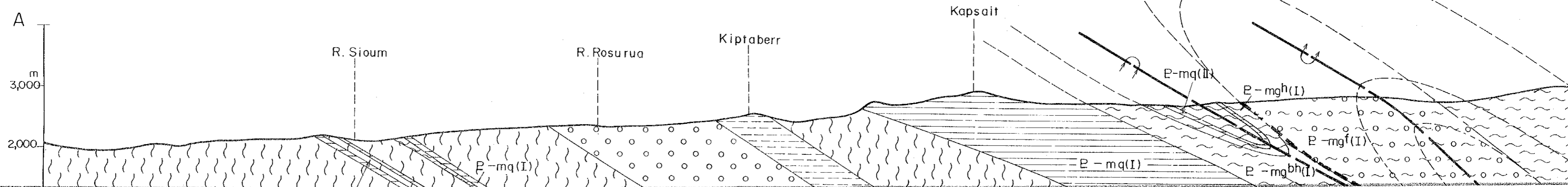
Inferred overturned anticlinal axis

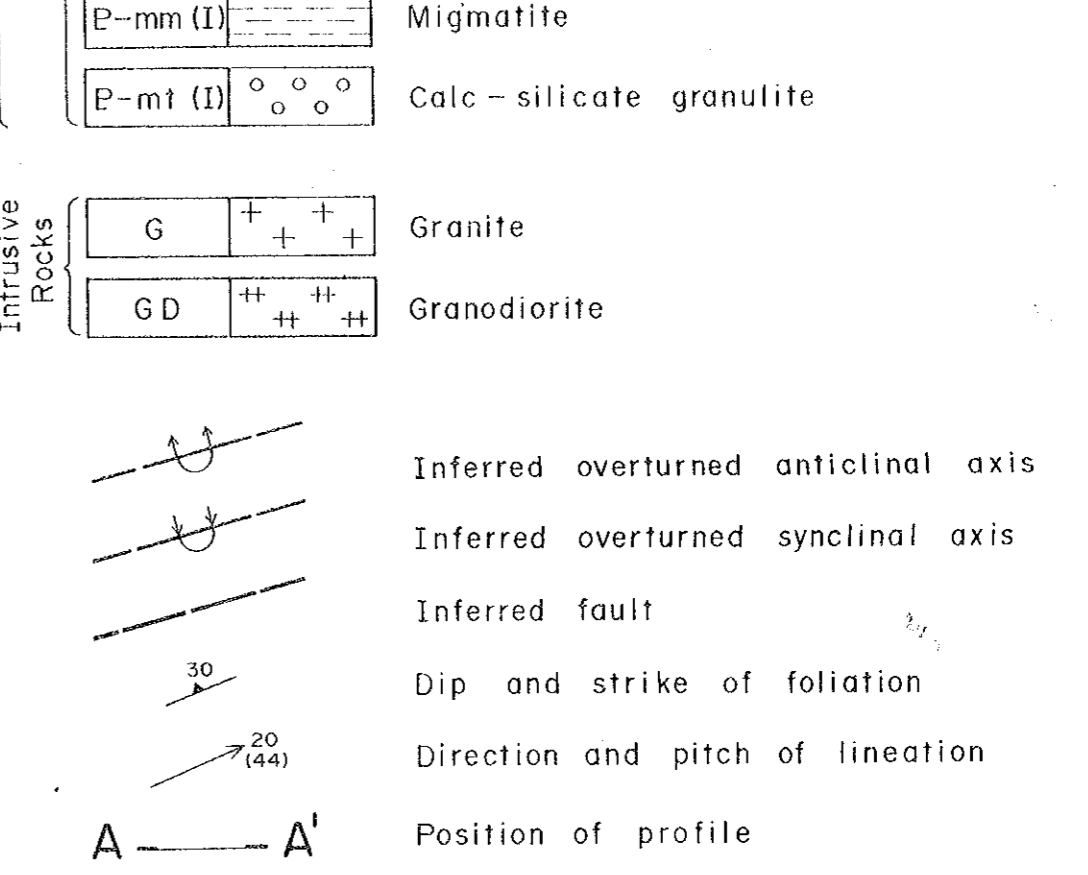
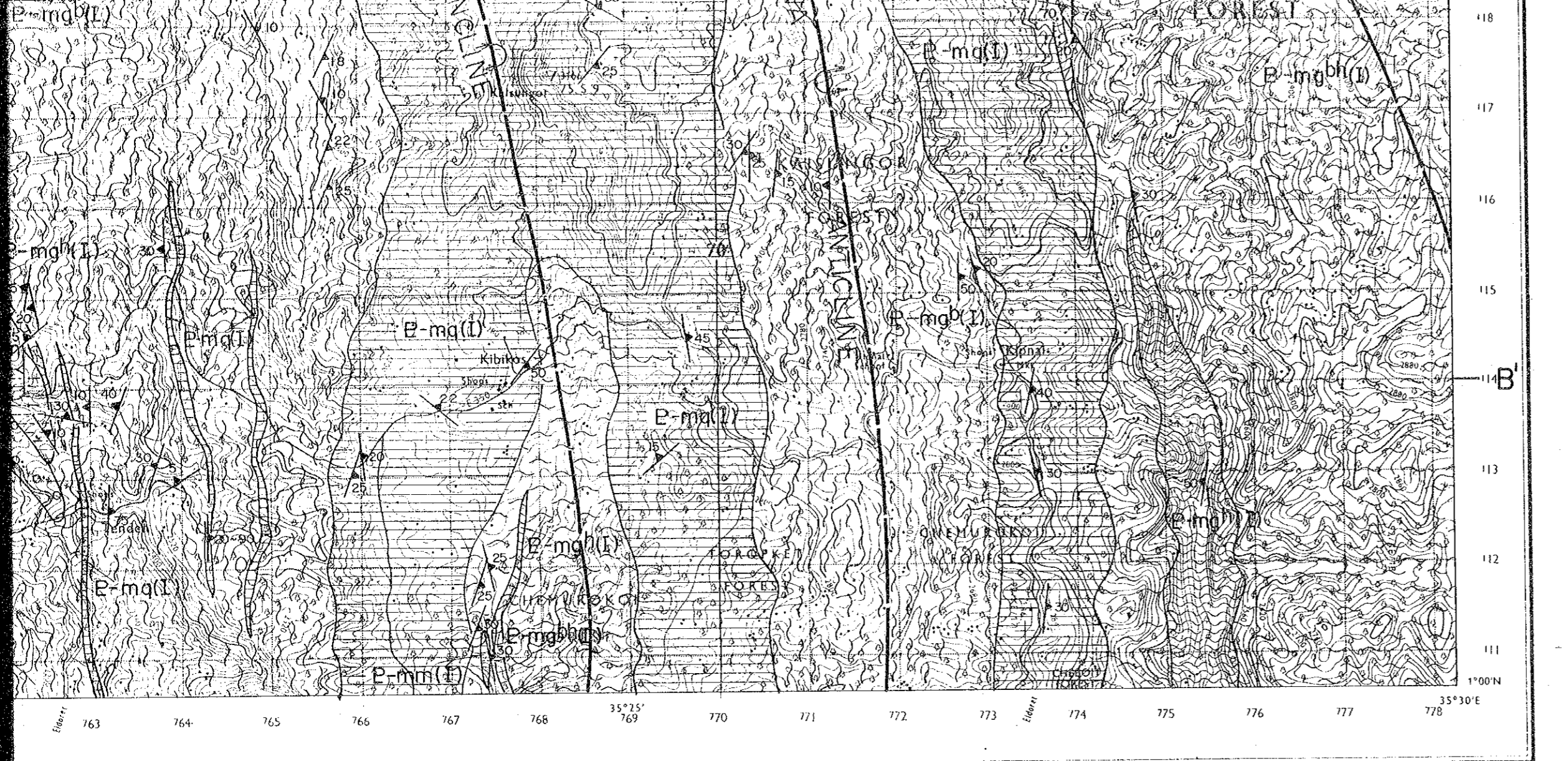


Scale 1 : 50,000



SECTION ALONG A-A'

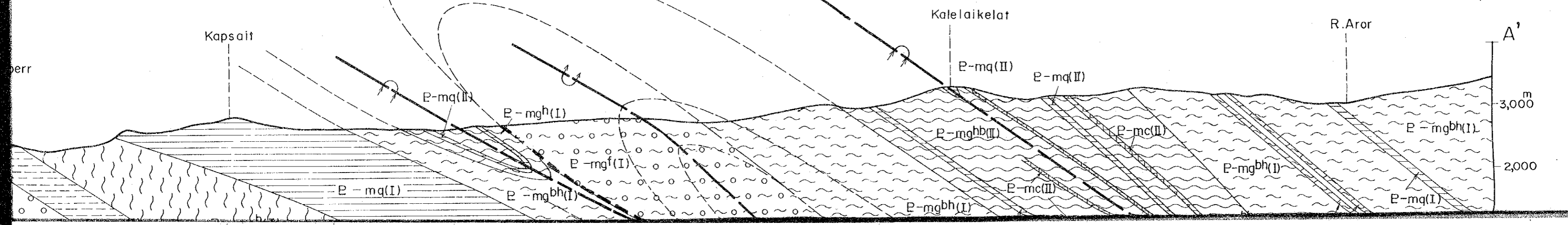


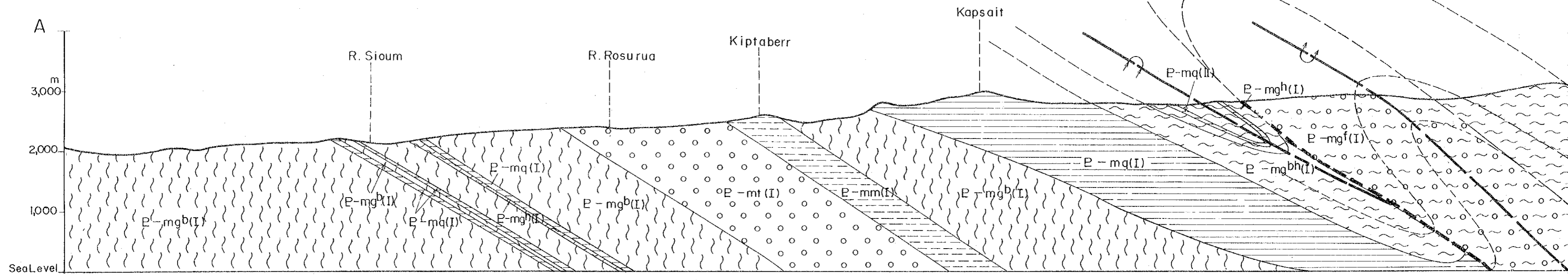


Scale 1 : 50,000

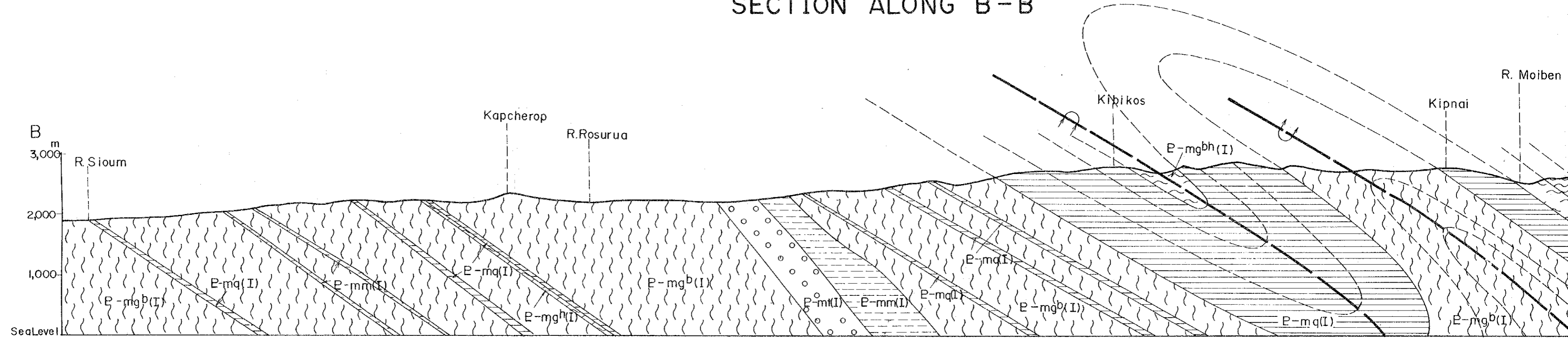


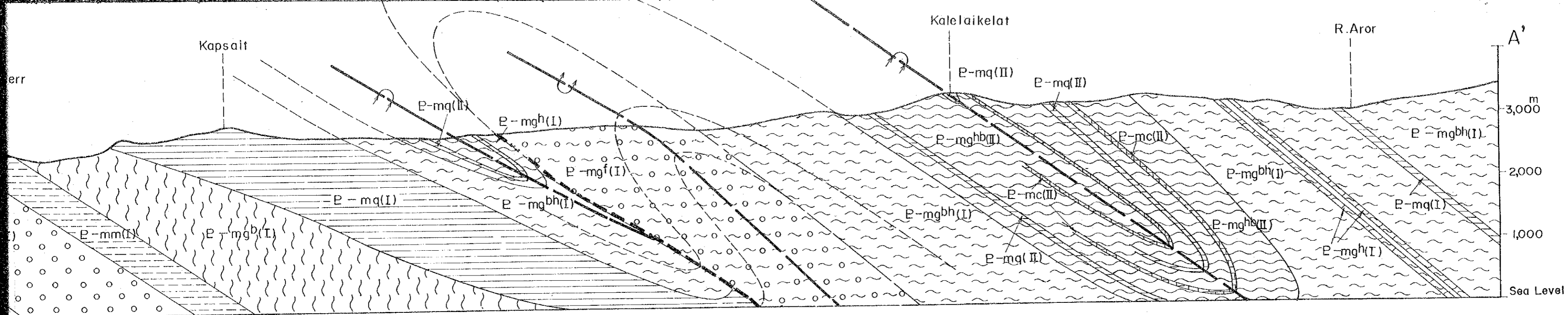
CROSS SECTION ALONG A-A'





SECTION ALONG B-B'





CROSS SECTION ALONG B-B'

