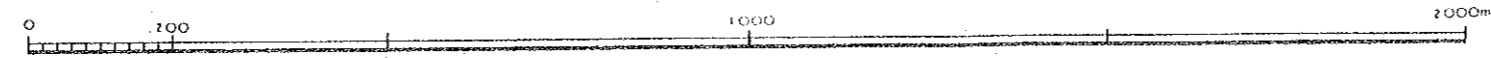
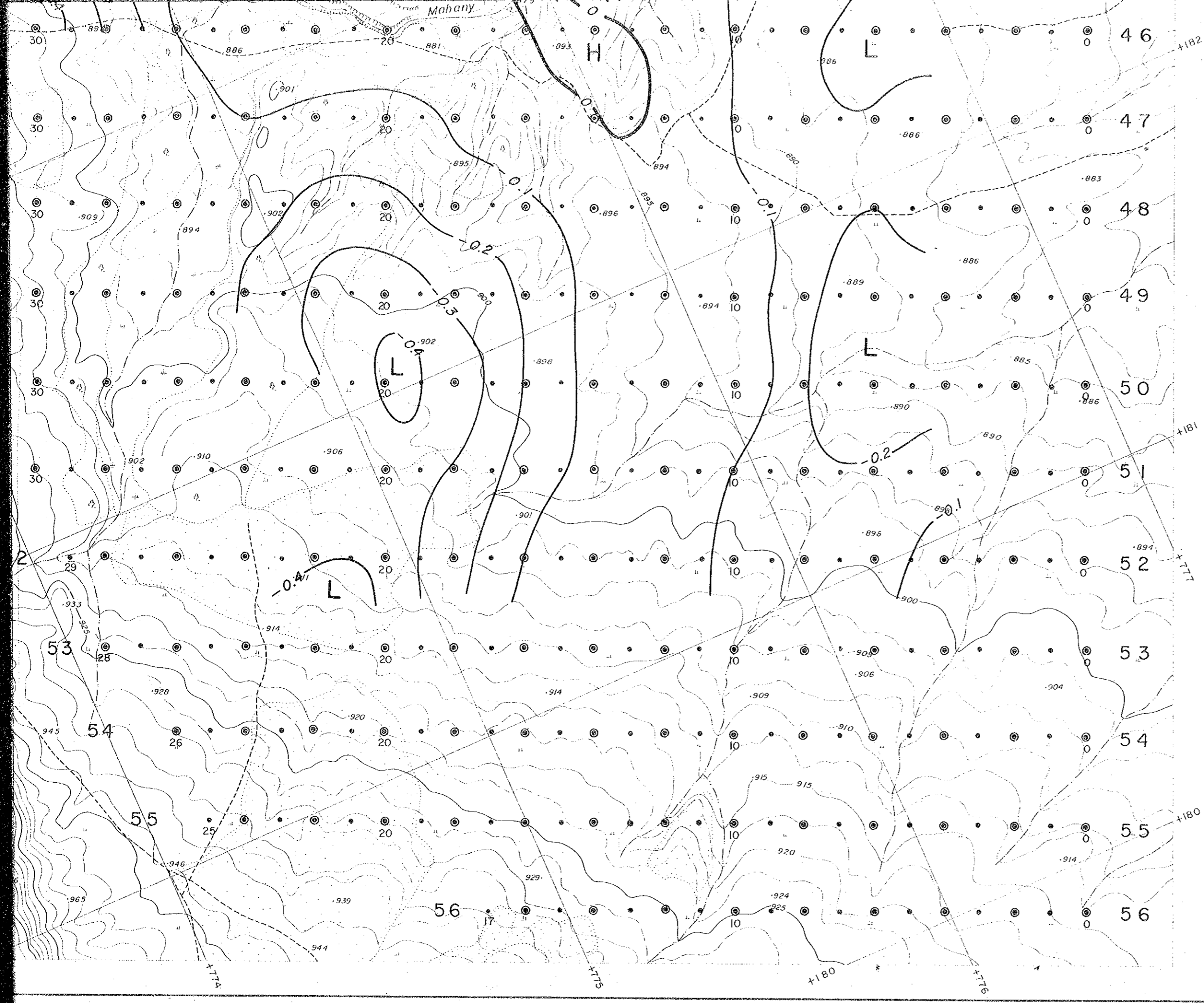


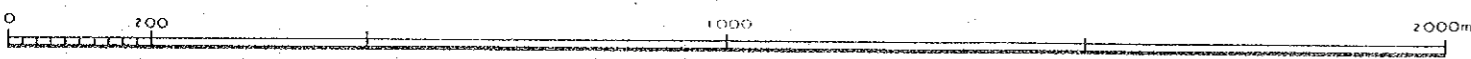
1:10,000



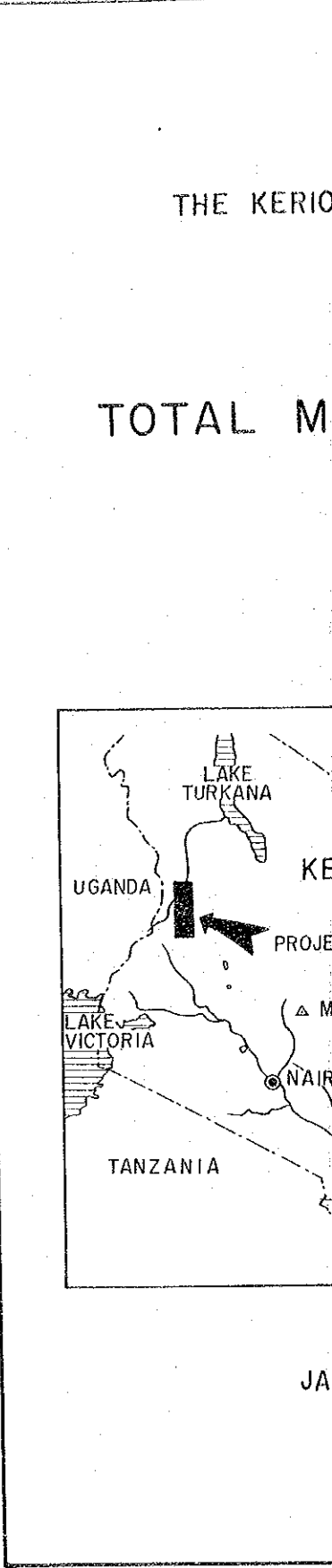
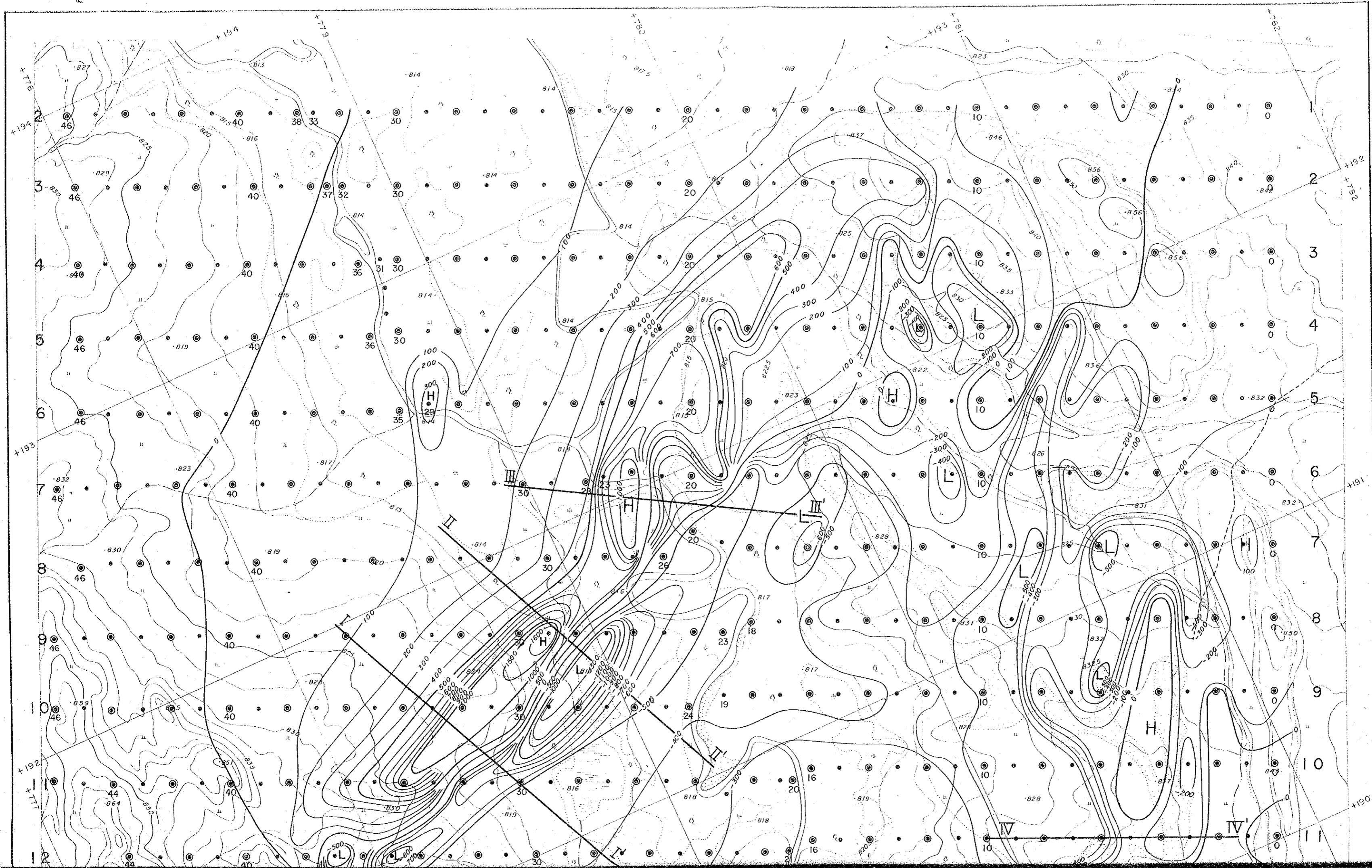
COOPERATIVE MINERAL EXPLORATION
IN THE KERIO VALLEY DEVELOPMENT
AUTHORITY AREA



1:10,000



COOPERATIVE MINERAL EXPLORATION
IN THE KERIO VALLEY DEVELOPMENT
AUTHORITY AREA

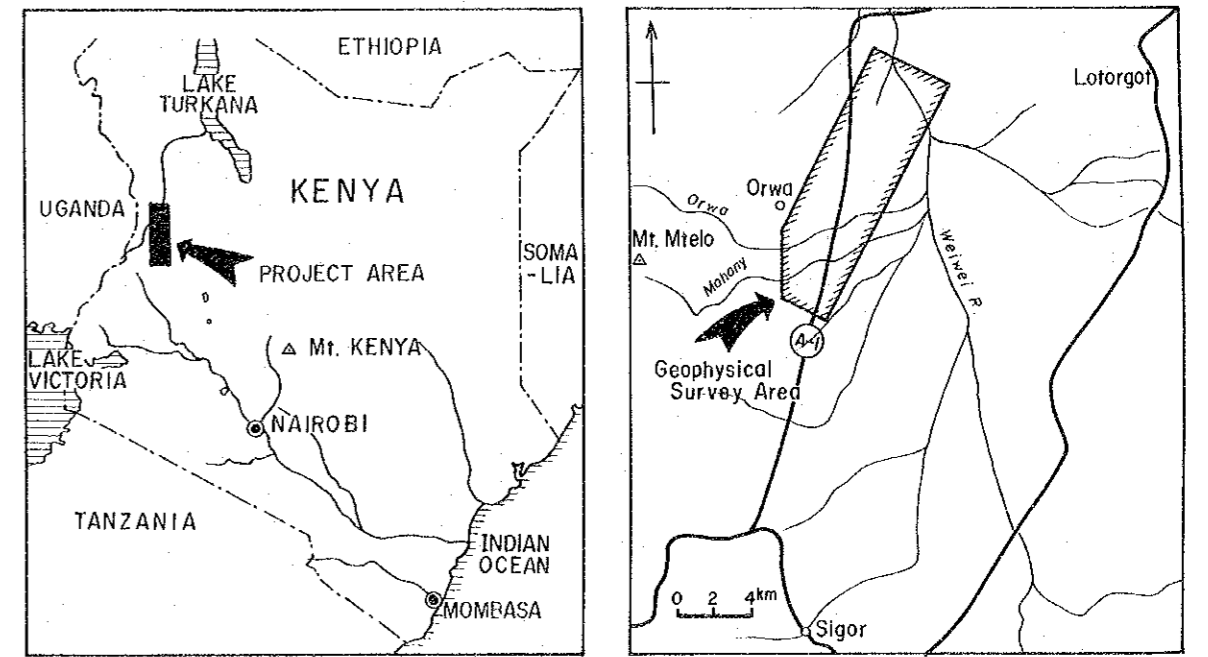


MINERAL EXPLORATION
IN
THE KERIO VALLEY DEVELOPMENT AUTHORITY AREA
(PHASE III)

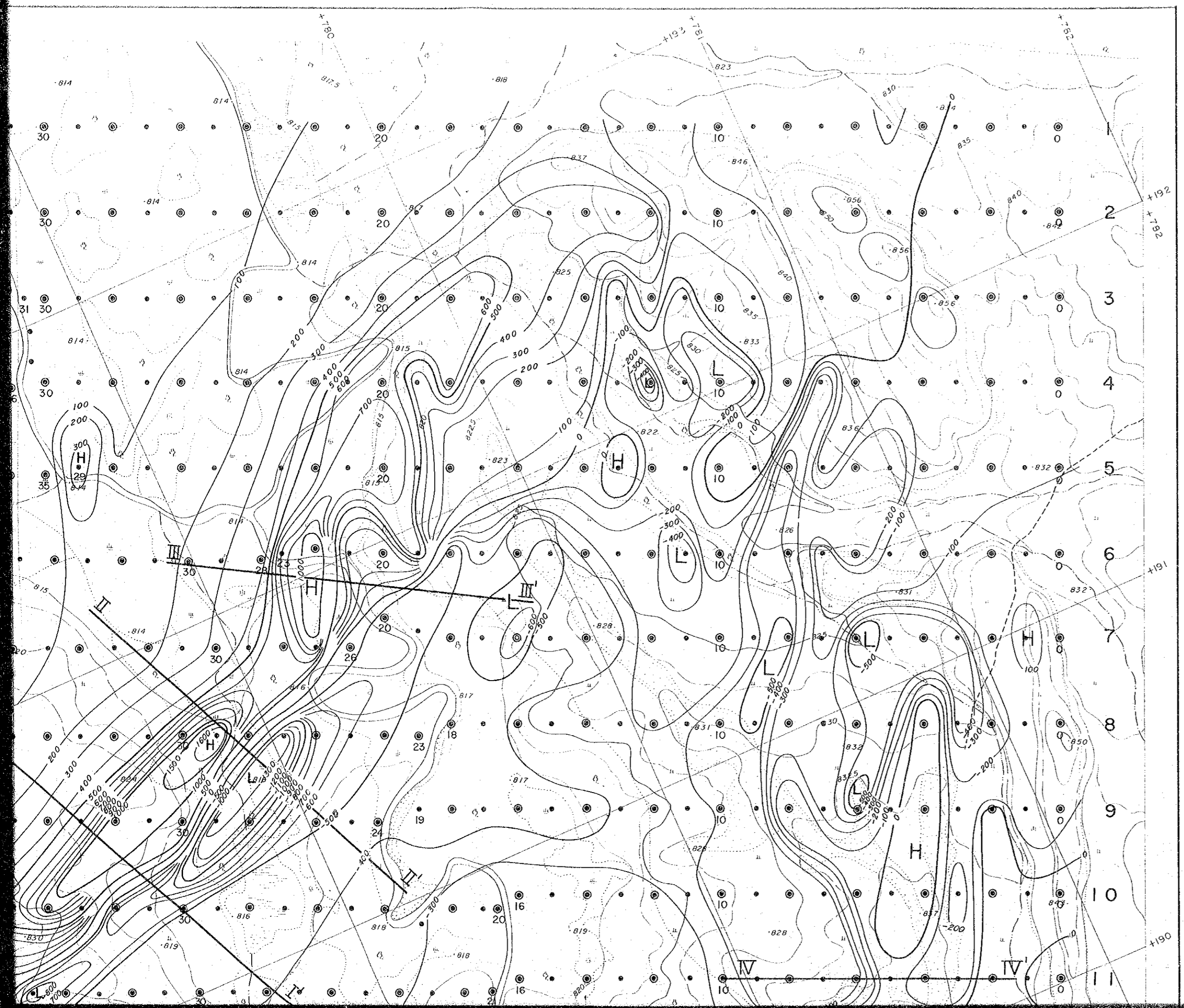
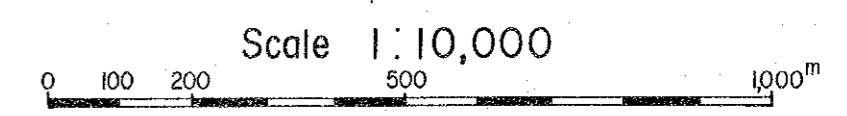
TOTAL MAGNETIC INTENSITY MAP

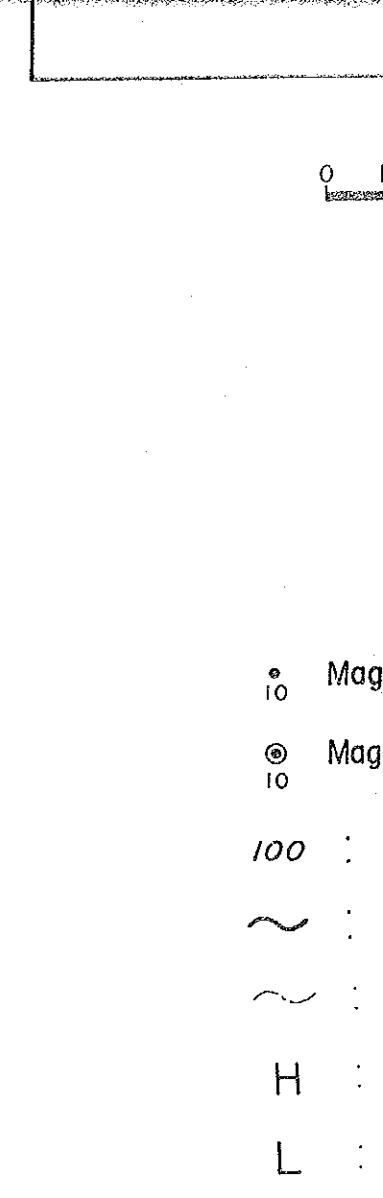
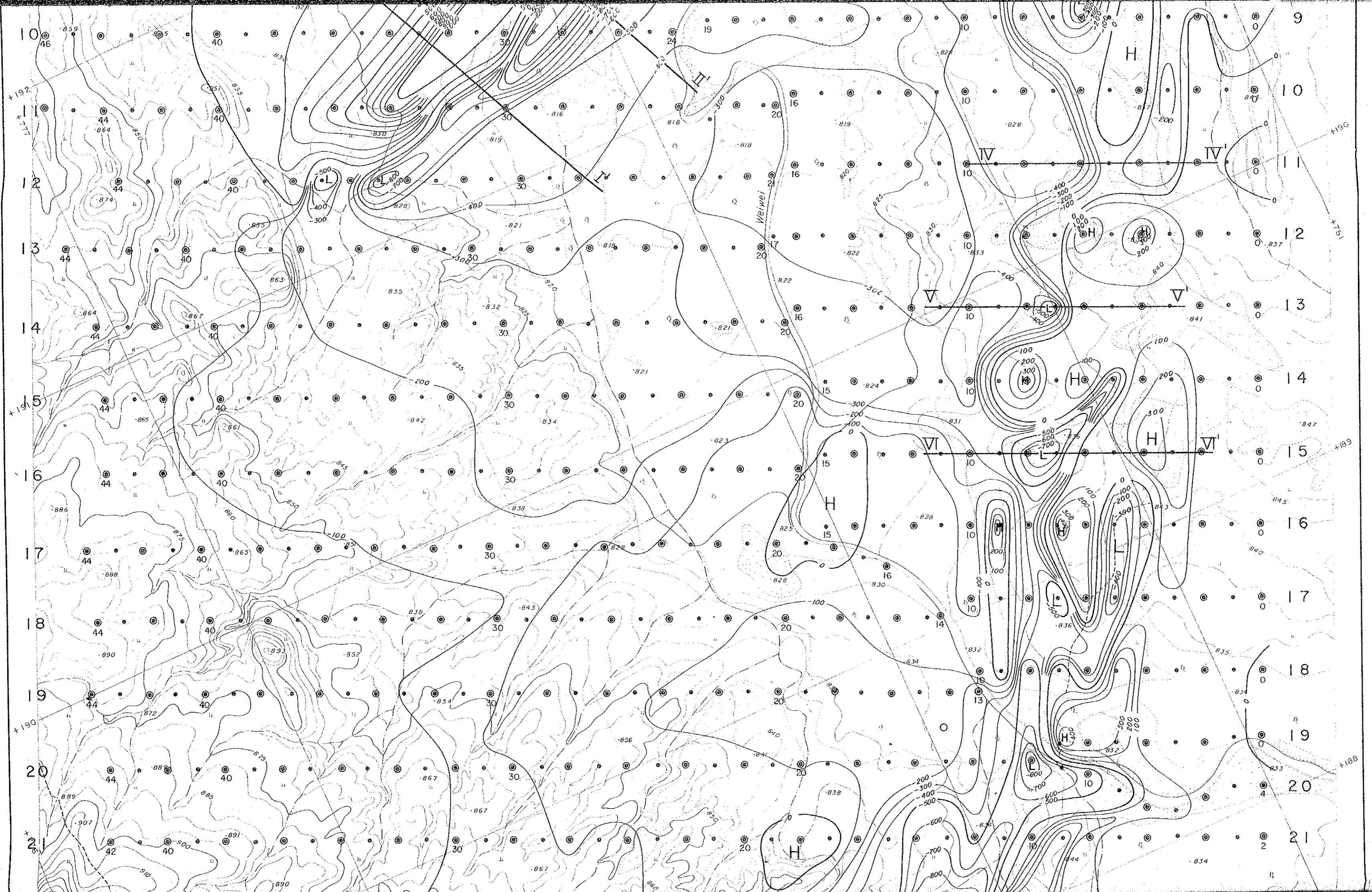
国際協力事業団
12643
図書資料室蔵書

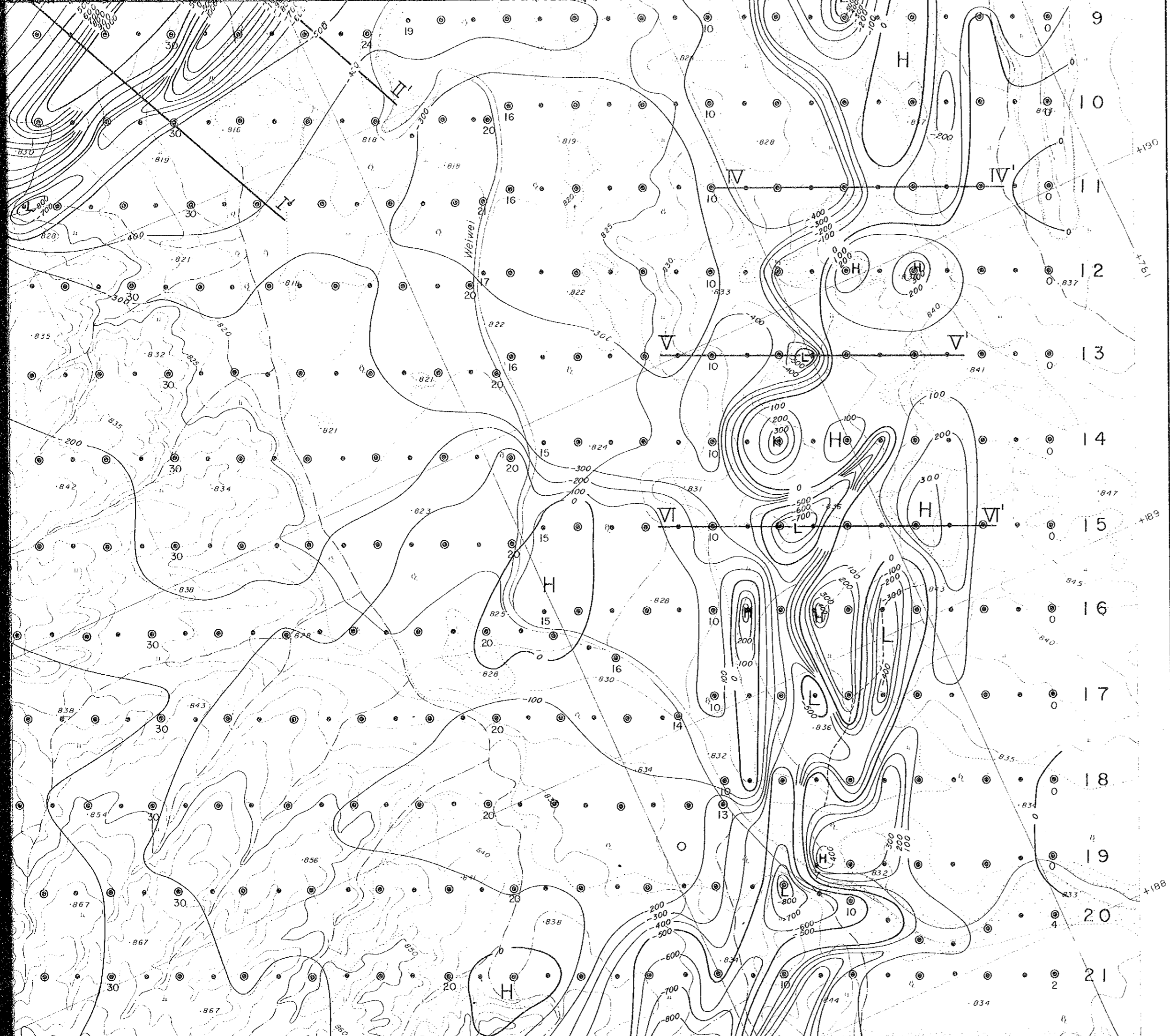
LOCATION INDEX



JAPAN INTERNATIONAL COOPERATION AGENCY
METAL MINING AGENCY OF JAPAN
December 1985



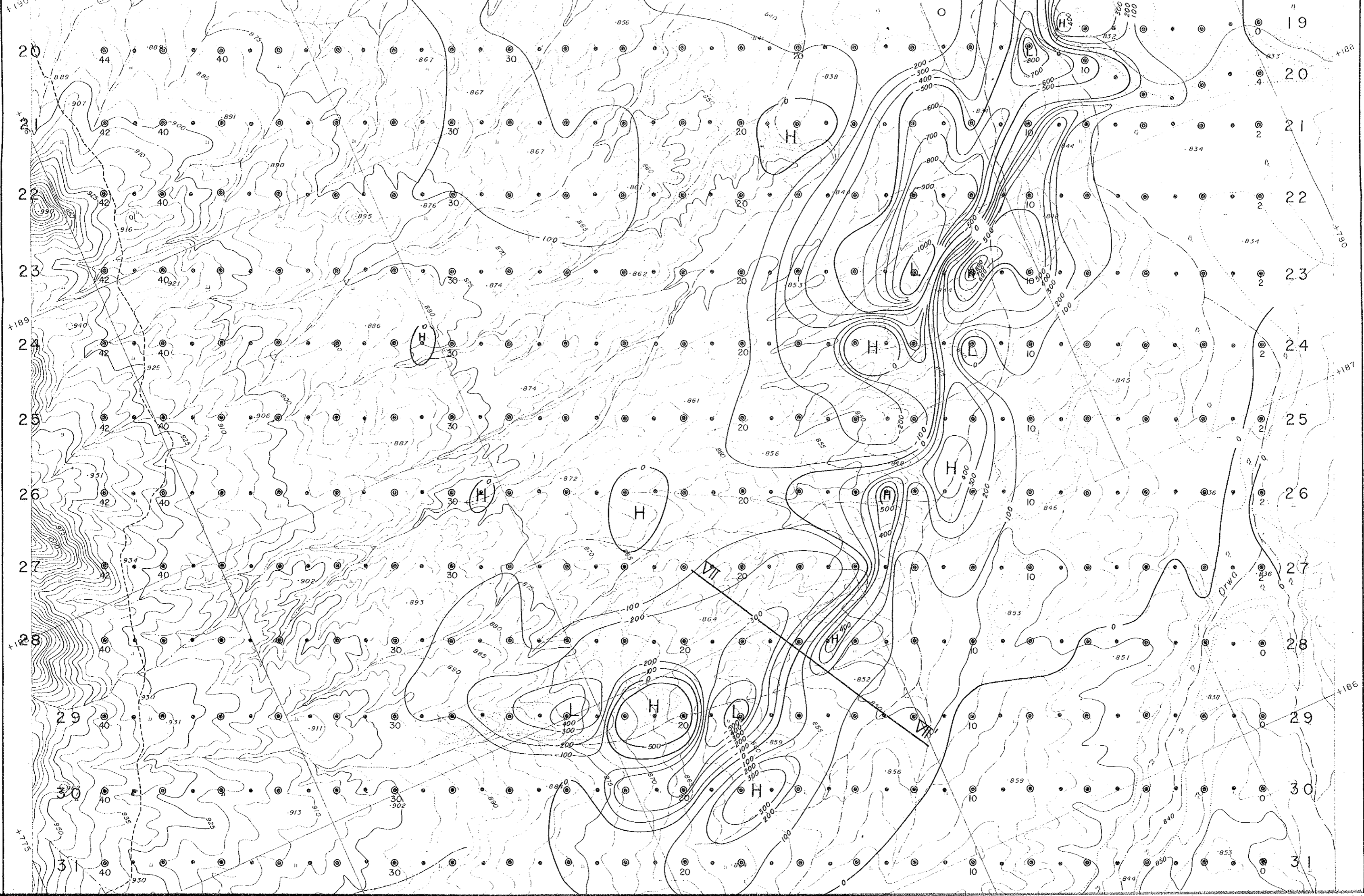


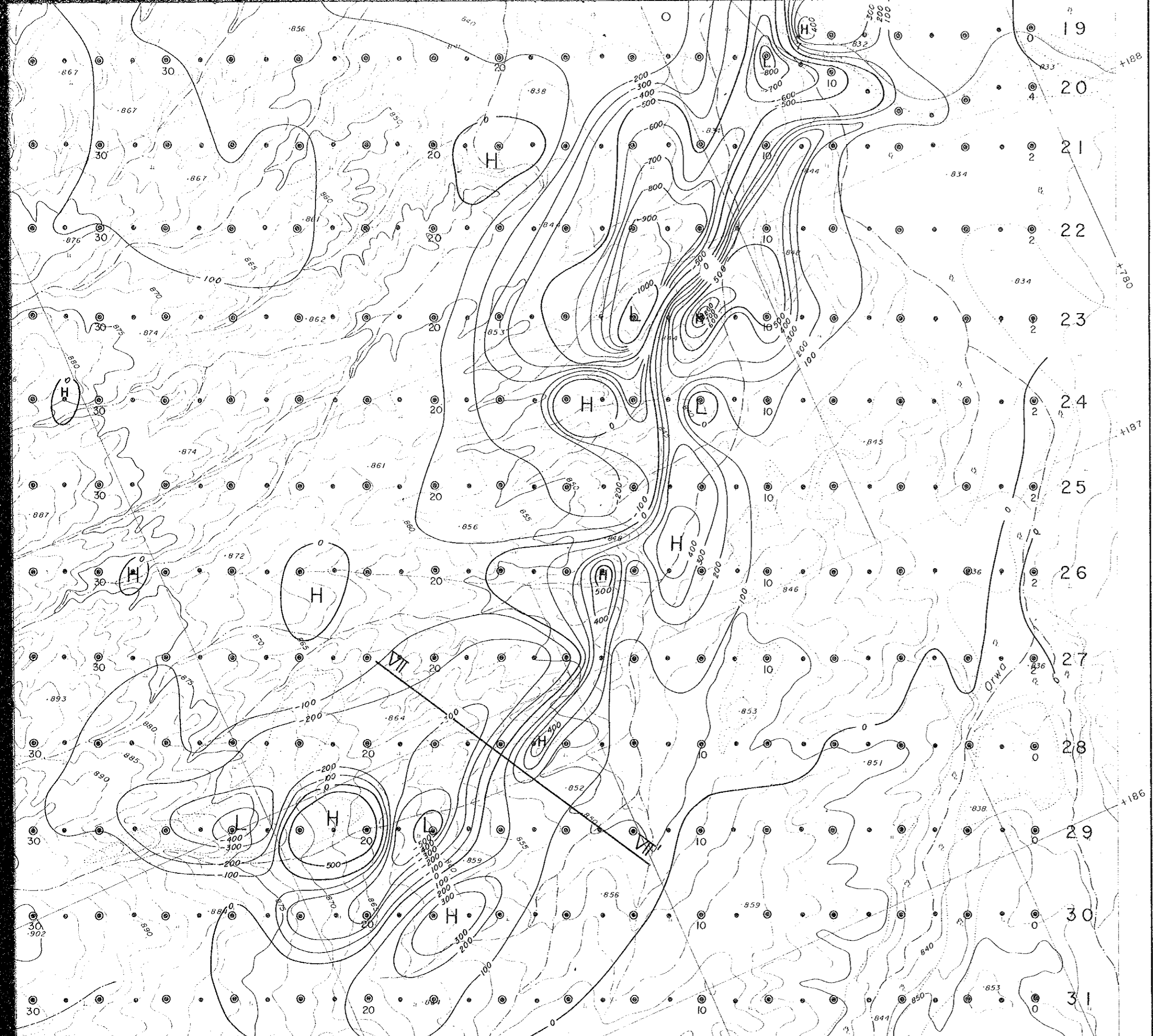


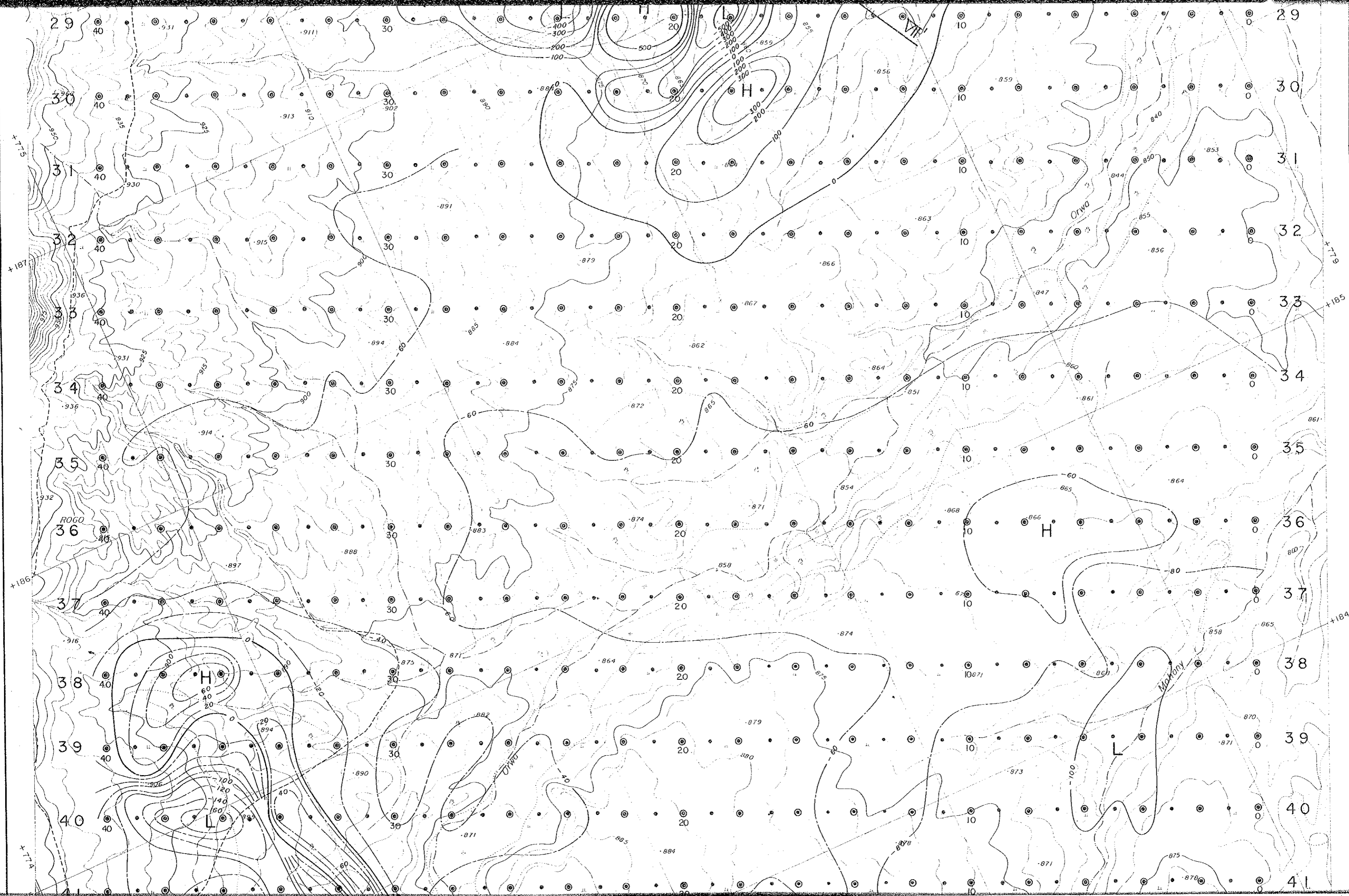
Scale 1:10,000
 0 100 200 500 1000^m

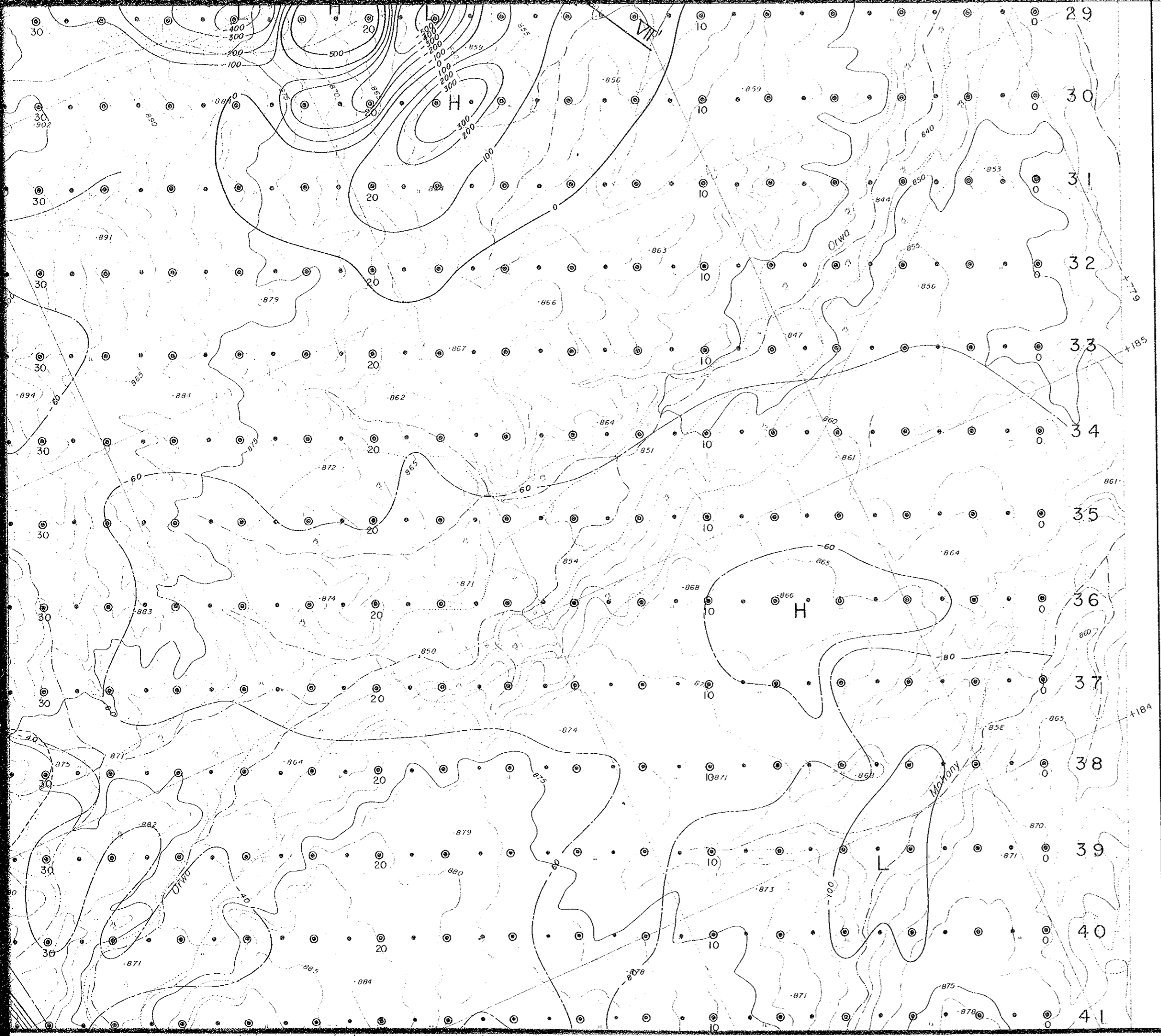
LEGEND

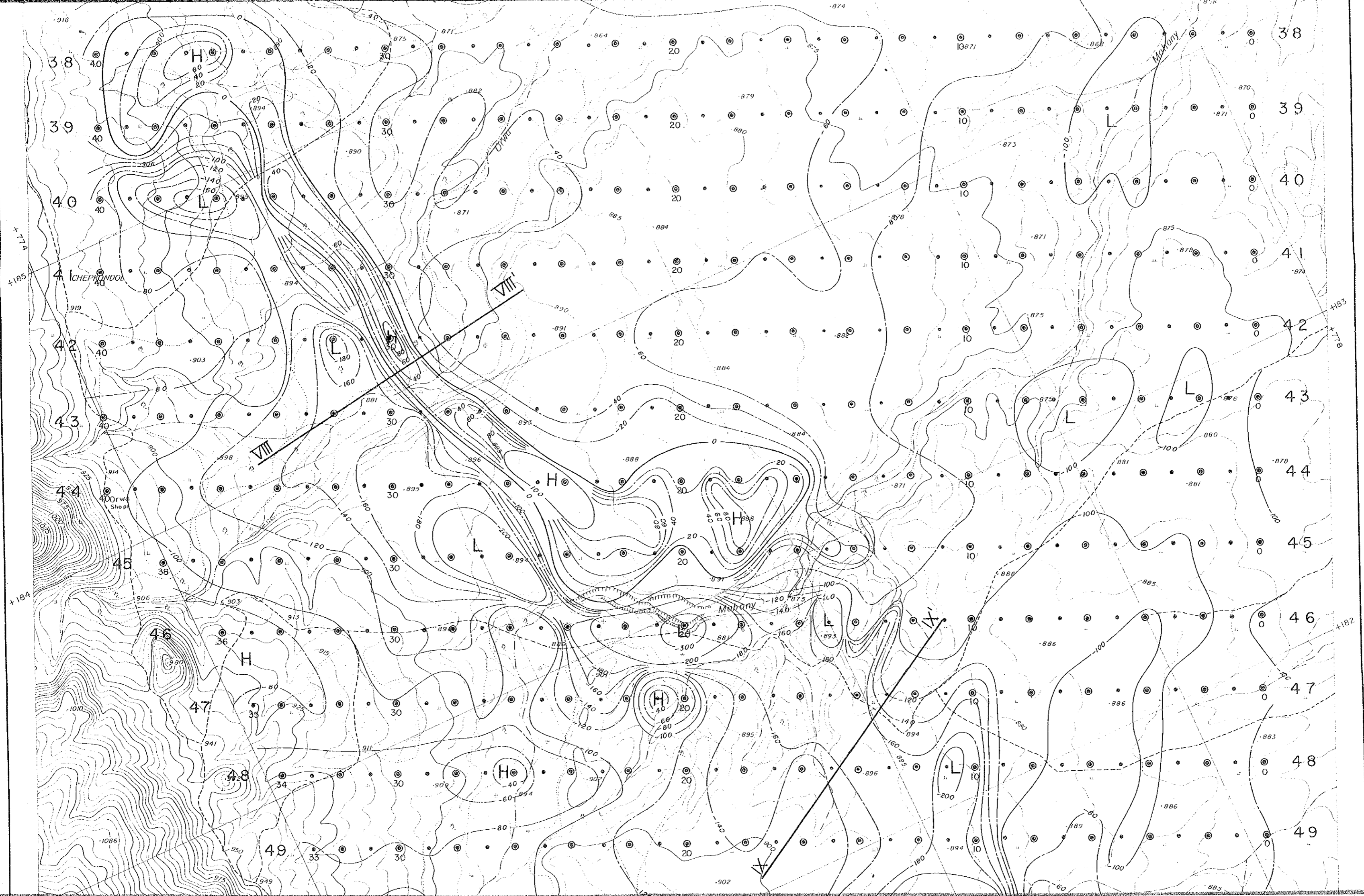
- Magnetic Observation Point and its Number
- ⊙ Magnetic and Gravity Observation Point and its Number
- 100 : (34 000 + 100) nT
- ~ : 100 nT
- ~ : 20 nT
- H : High Anomaly
- L : Low Anomaly

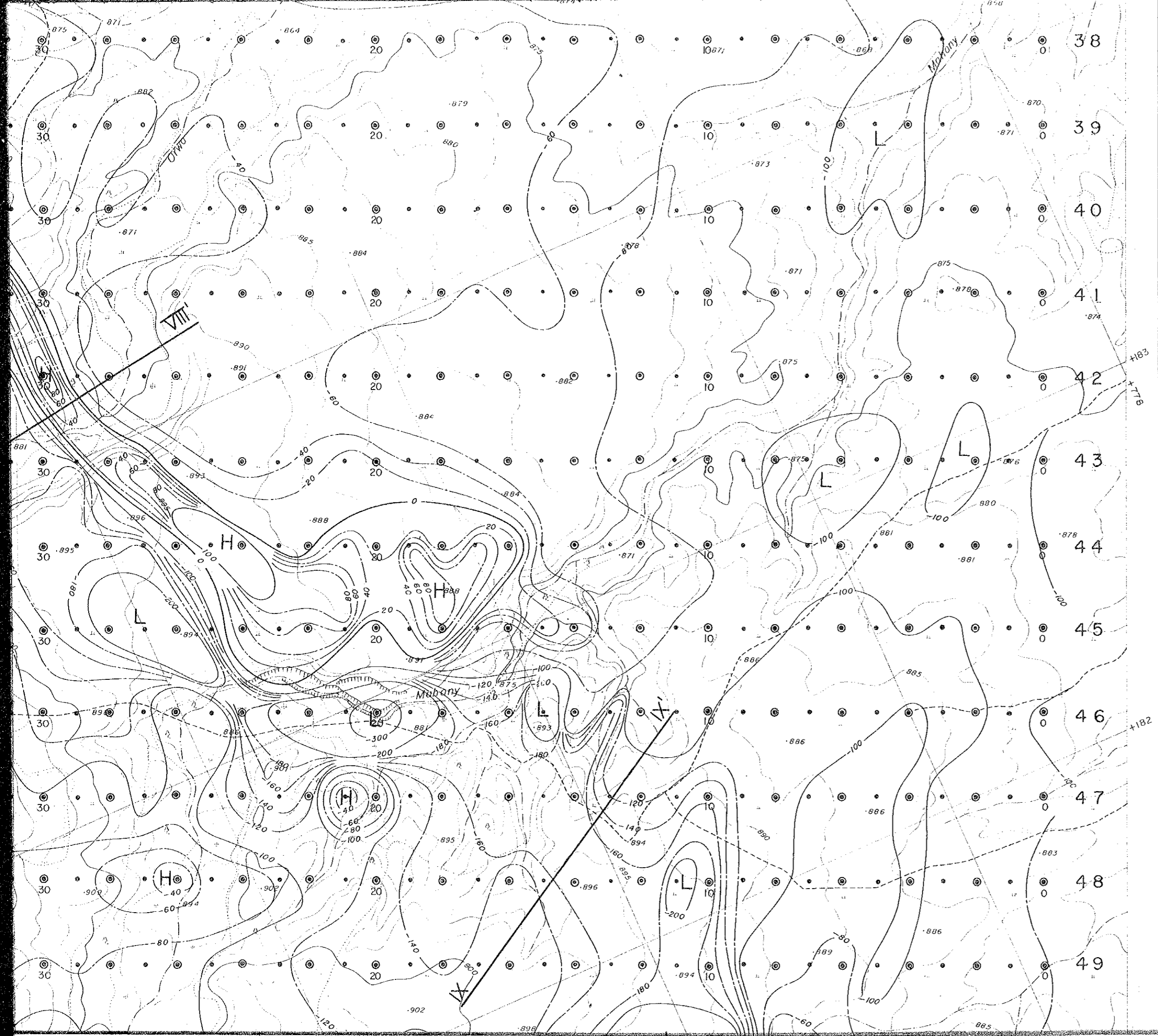


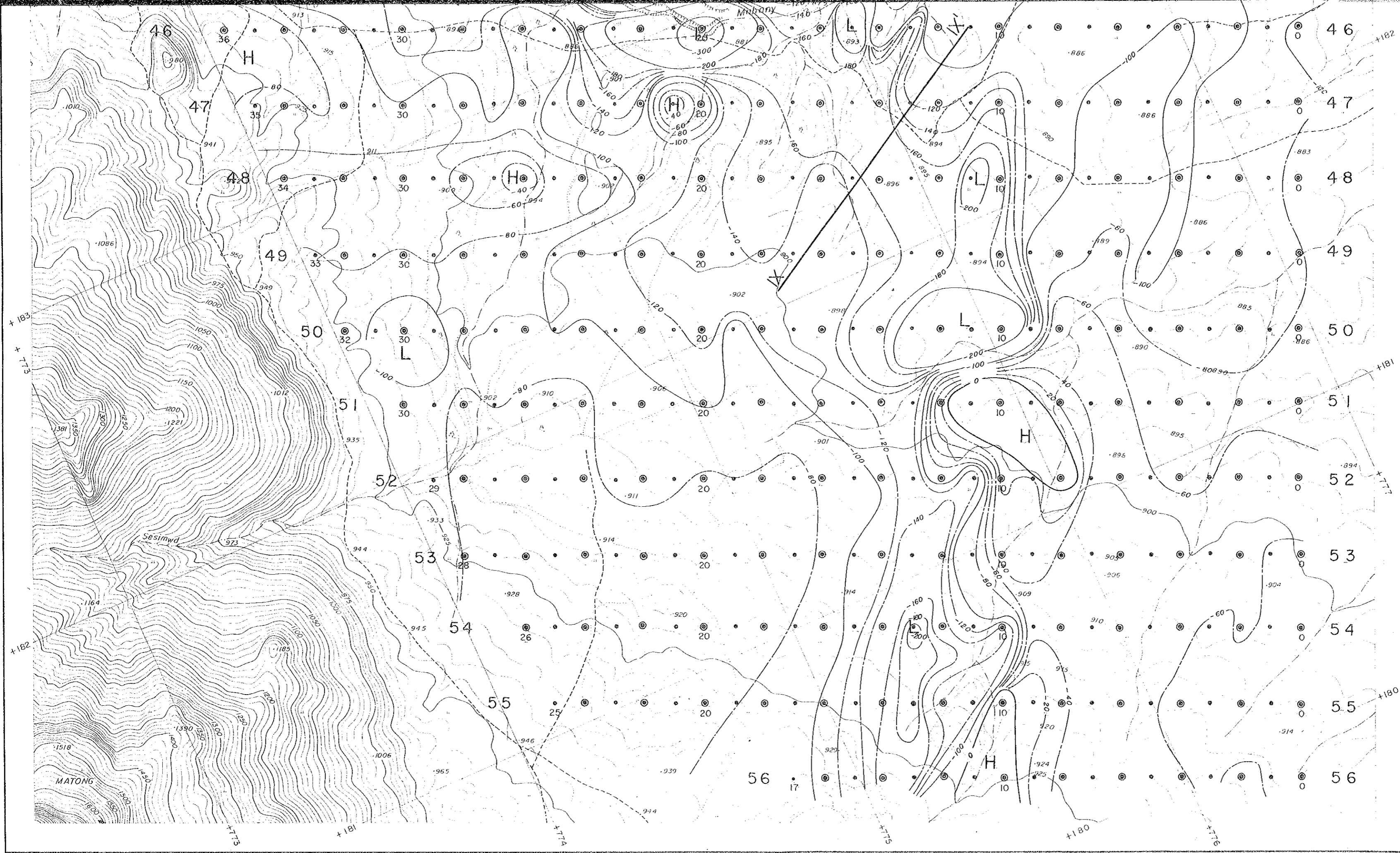




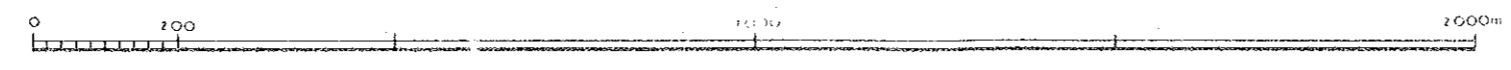




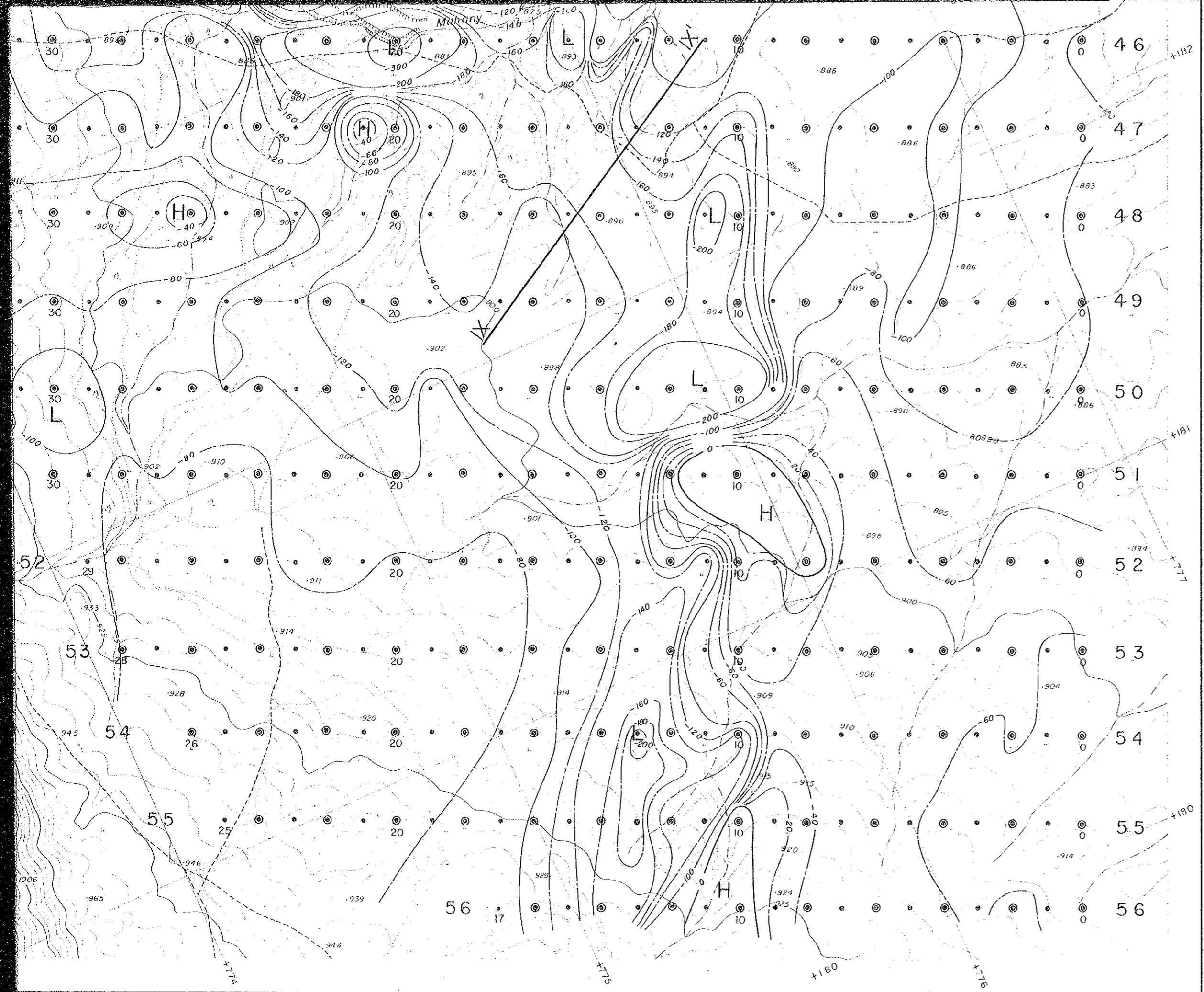




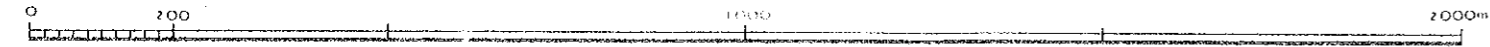
1:10,000



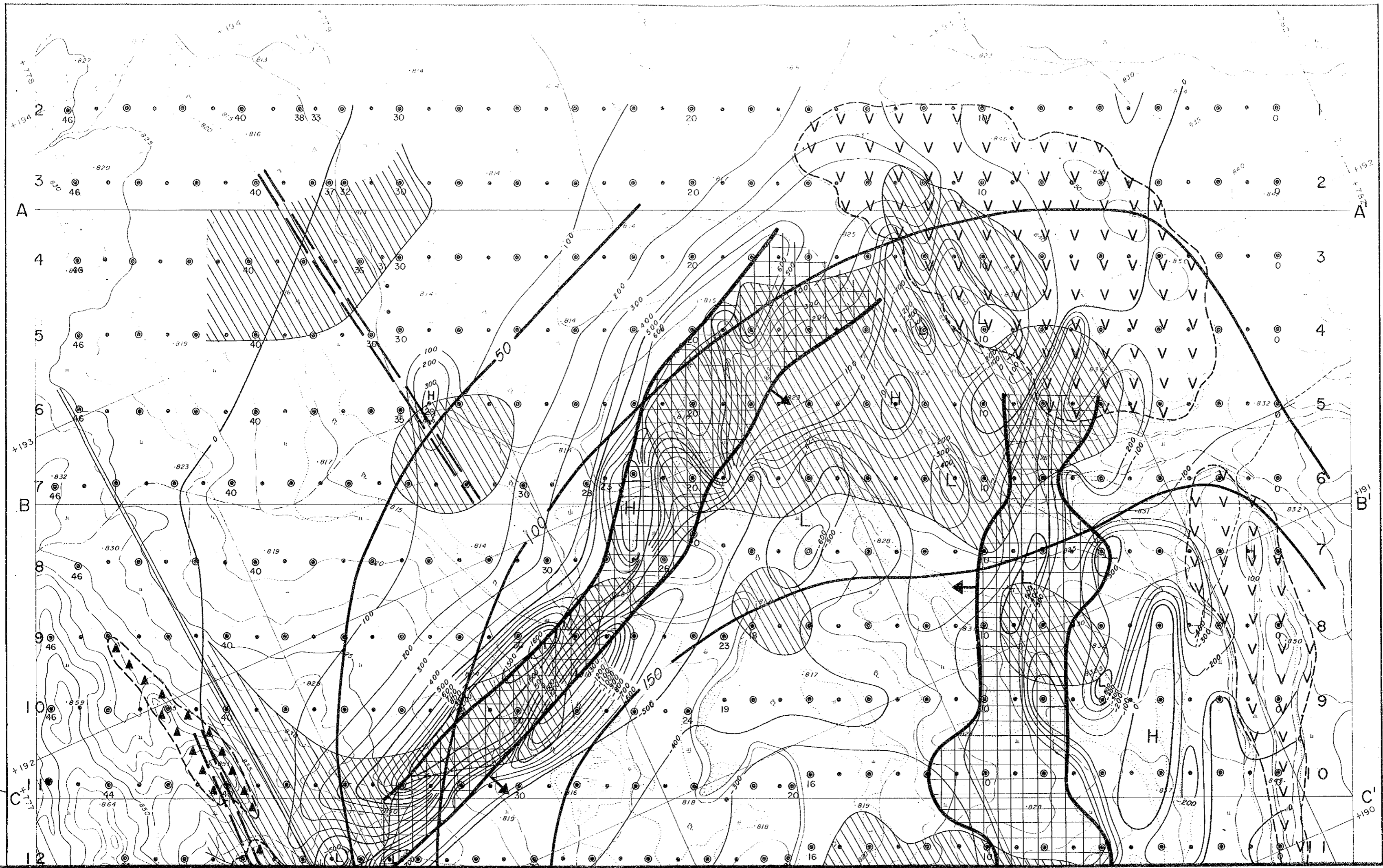
COOPERATIVE MINERAL EXPLORATION
IN THE KERIO VALLEY DEVELOPMENT
AUTHORITY AREA



1:10,000

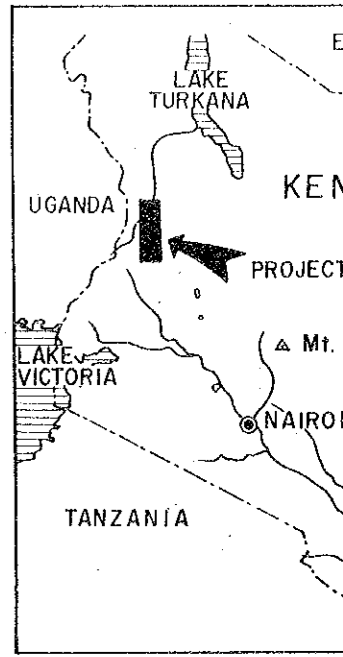


COOPERATIVE MINERAL EXPLORATION
IN THE KERIO VALLEY DEVELOPMENT
AUTHORITY AREA



THE KERIO

IN



JAPA

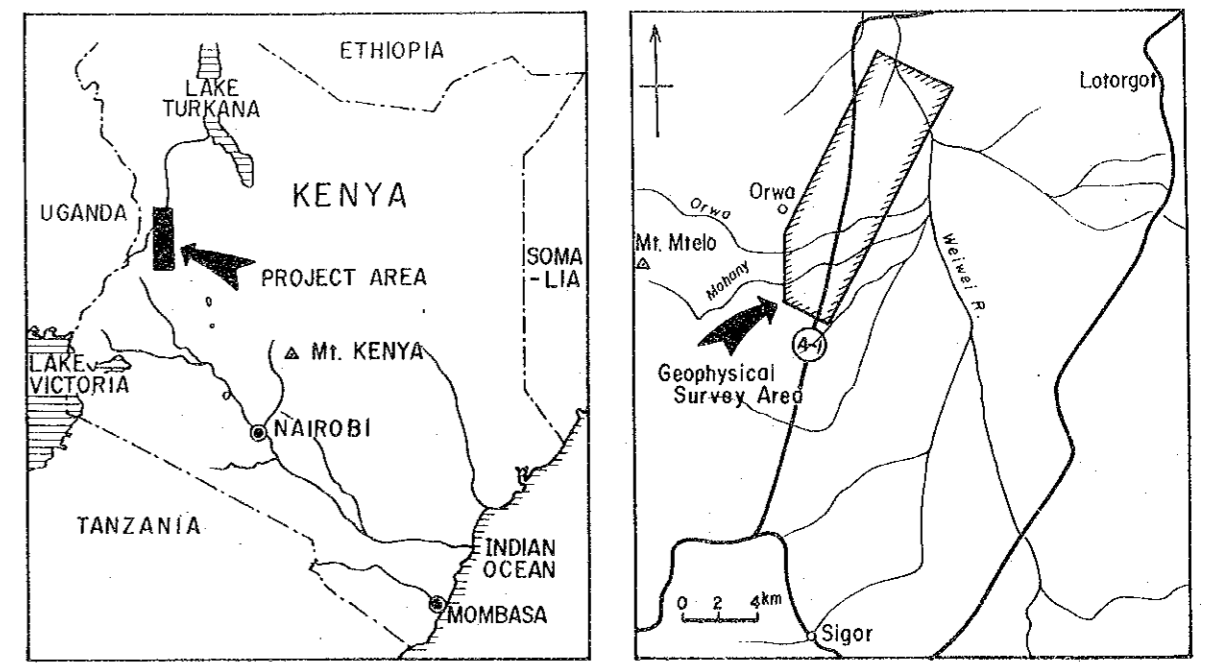
0 100

MINERAL EXPLORATION
IN
THE KERIO VALLEY DEVELOPMENT AUTHORITY AREA
(PHASE III)

INTERPRETATION MAP

国際協力事業団
12643
図書資料室蔵書

LOCATION INDEX



JAPAN INTERNATIONAL COOPERATION AGENCY
METAL MINING AGENCY OF JAPAN
December, 1985

