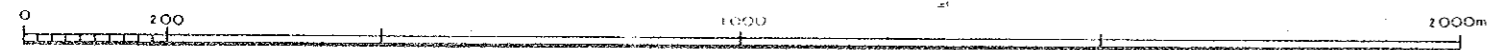
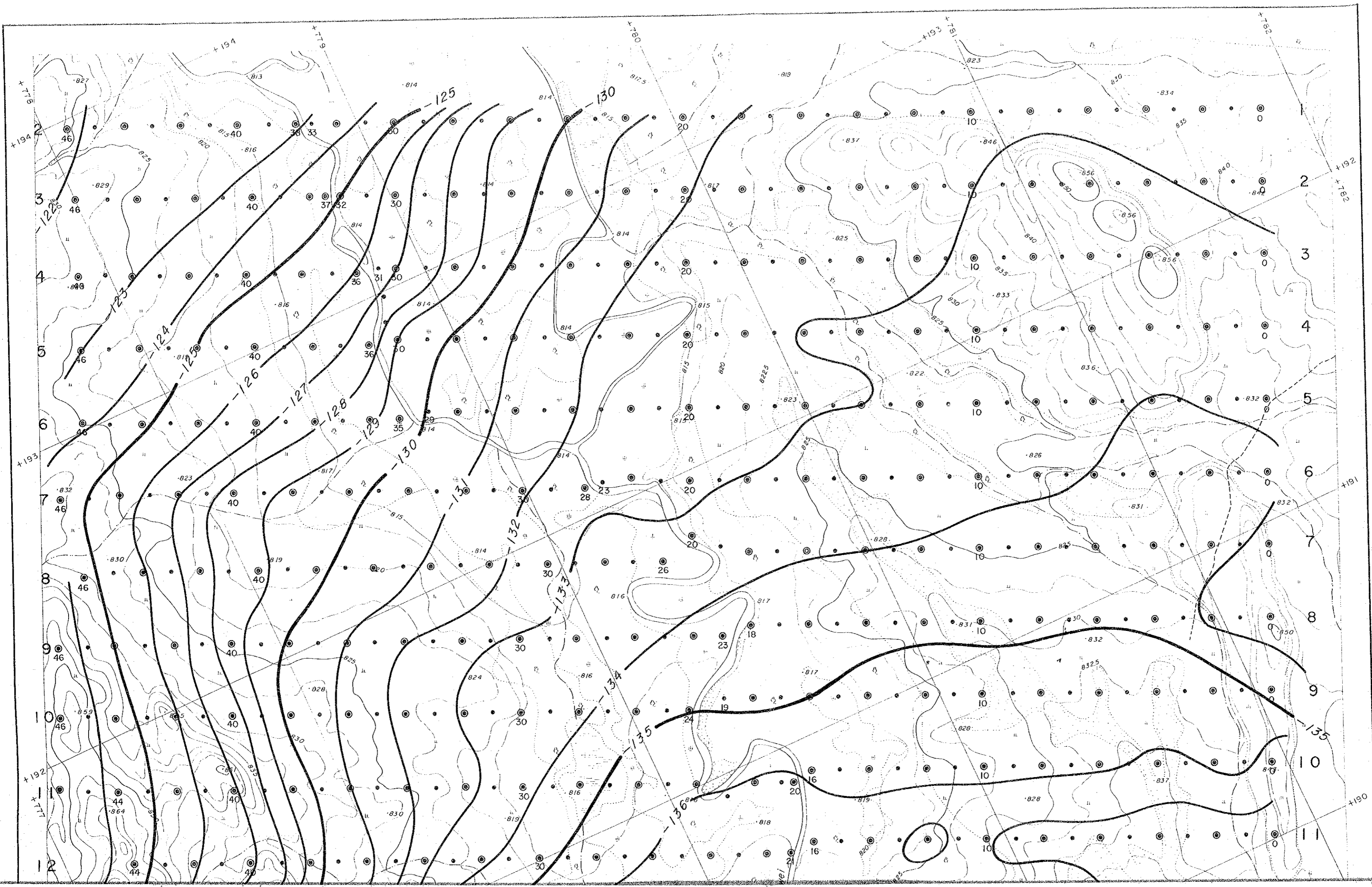


1 : 10,000

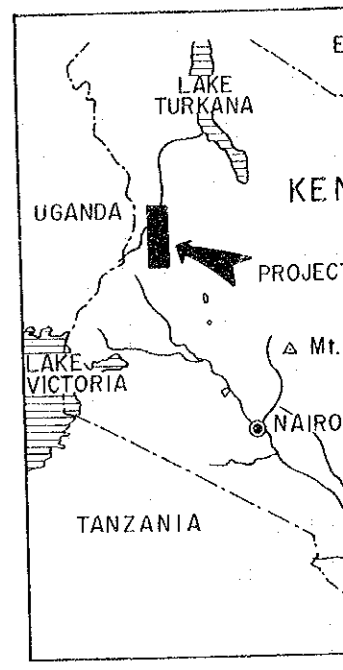


COOPERATIVE MINERAL EXPLORATION  
IN THE KERIO VALLEY DEVELOPMENT  
AUTHORITY AREA



THE KERIO V

BOUGU



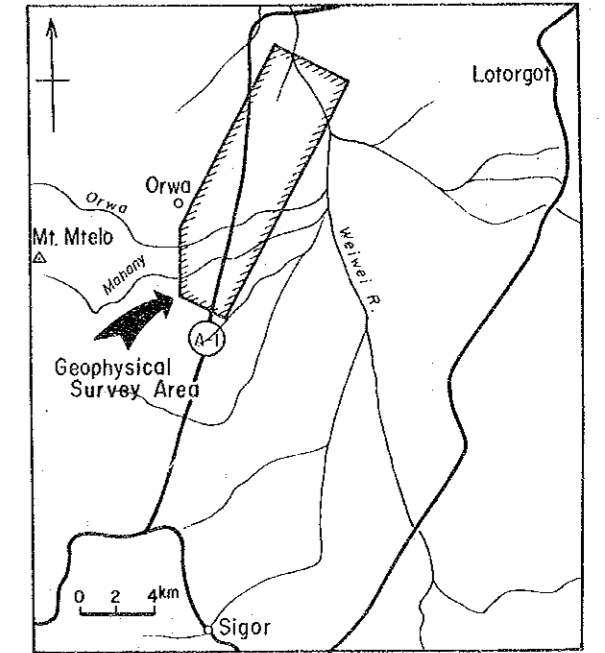
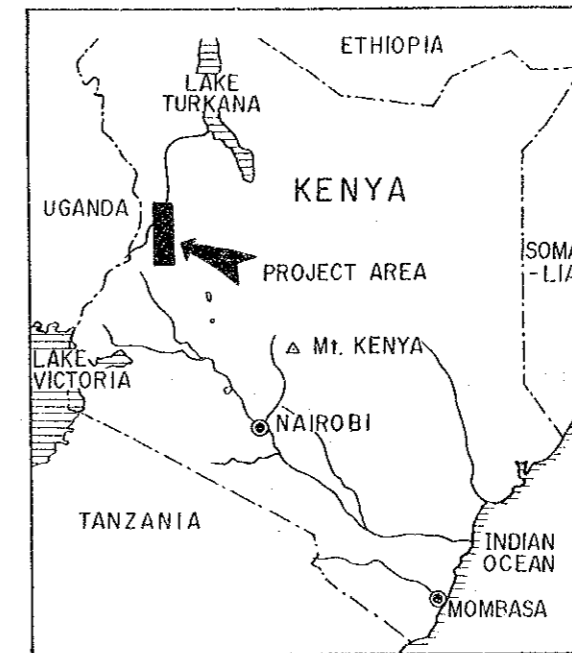
0 100

MINERAL EXPLORATION  
IN  
THE KERIO VALLEY DEVELOPMENT AUTHORITY AREA  
(PHASE III)

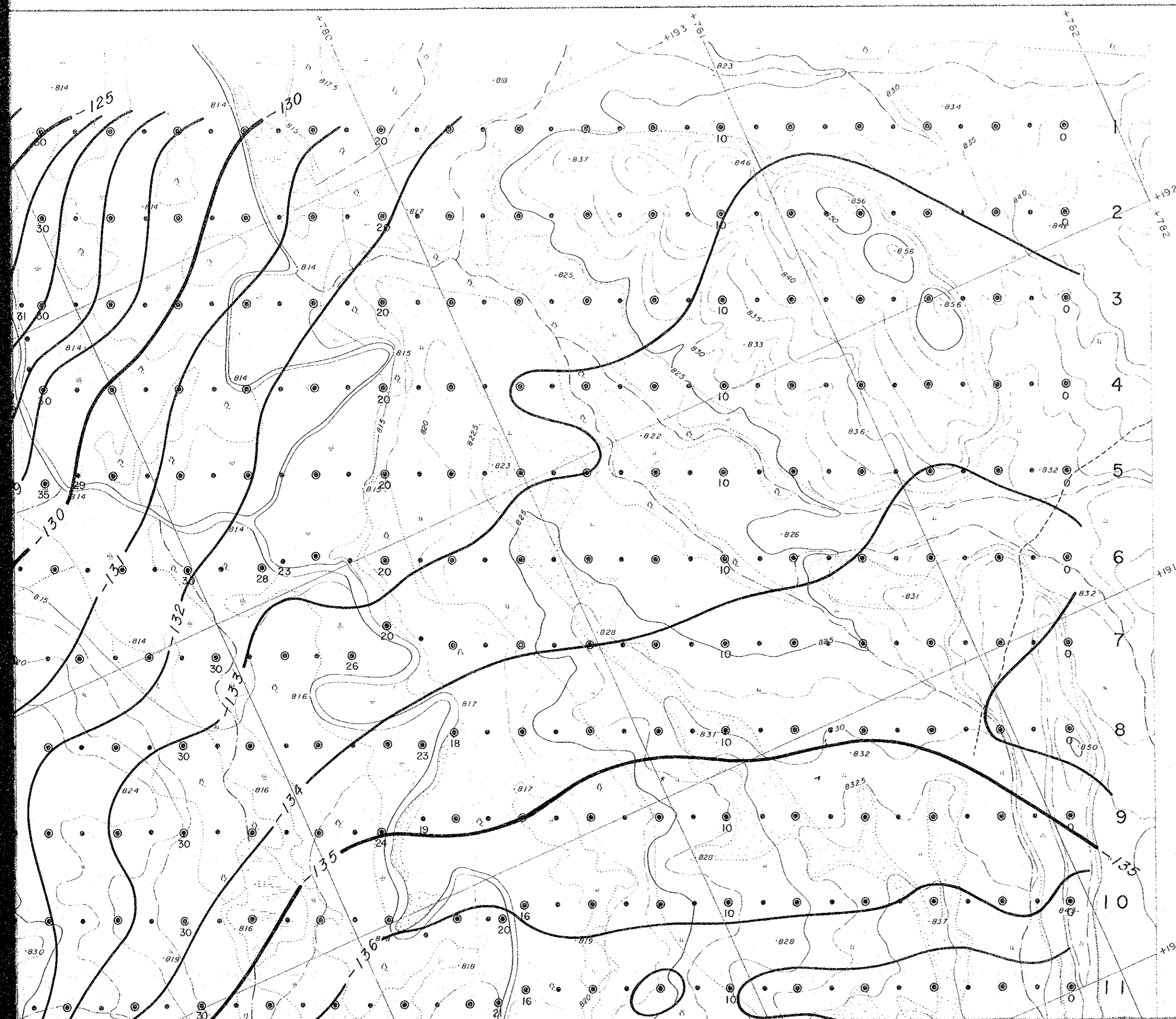
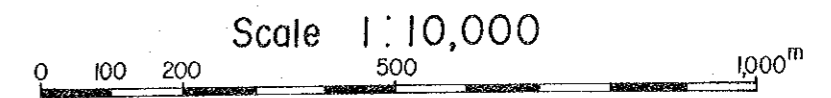
BOUGUER ANOMALY MAY  
( $P=2.6$ )

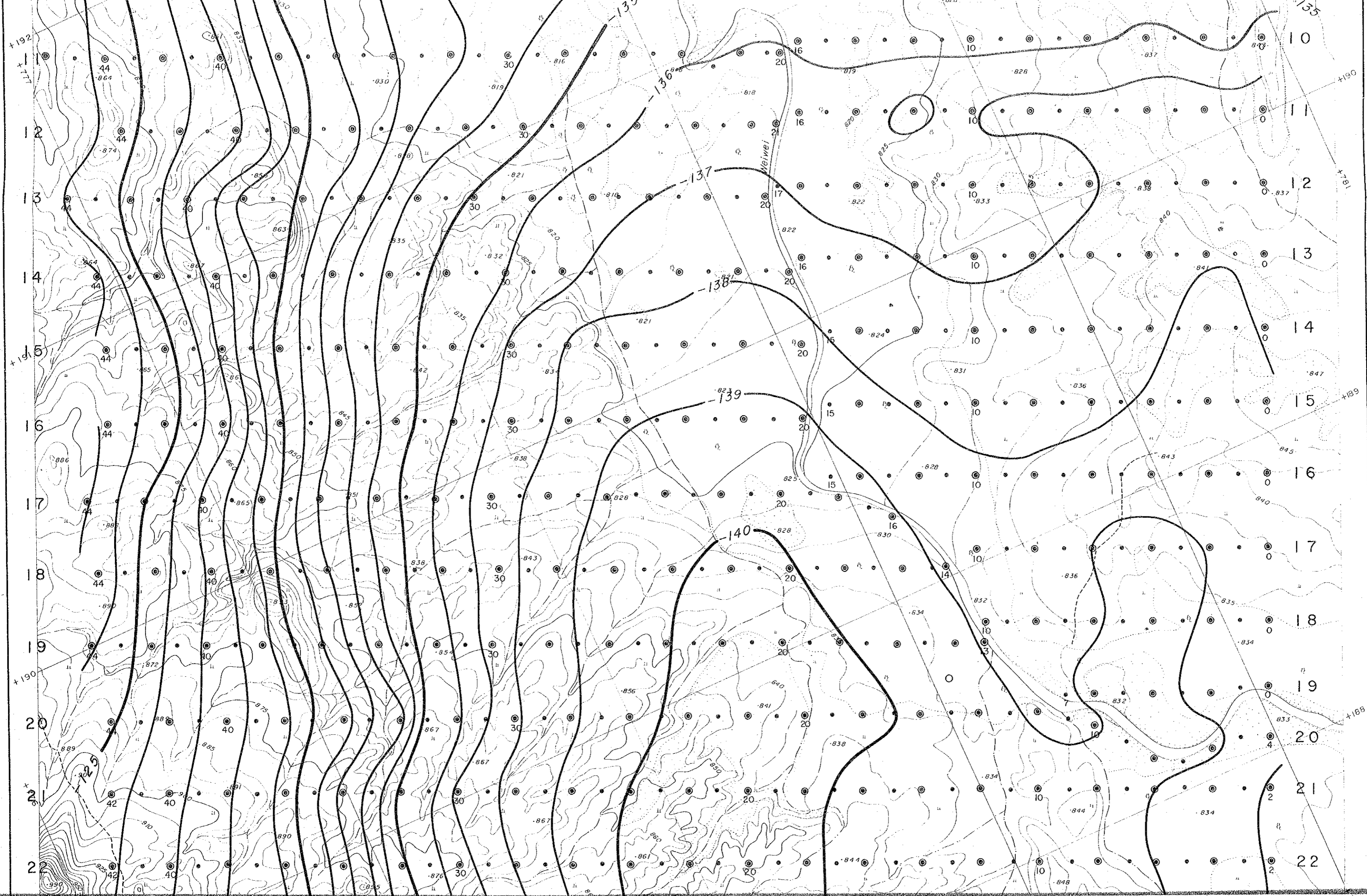
国際協力事業団  
12643  
図書資料室蔵書

LOCATION INDEX



JAPAN INTERNATIONAL COOPERATION AGENCY  
METAL MINING AGENCY OF JAPAN  
December 1985

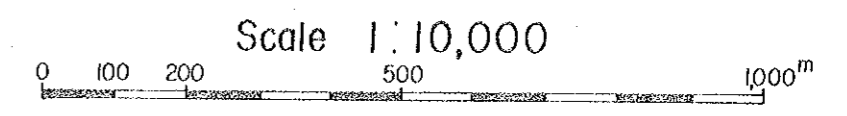
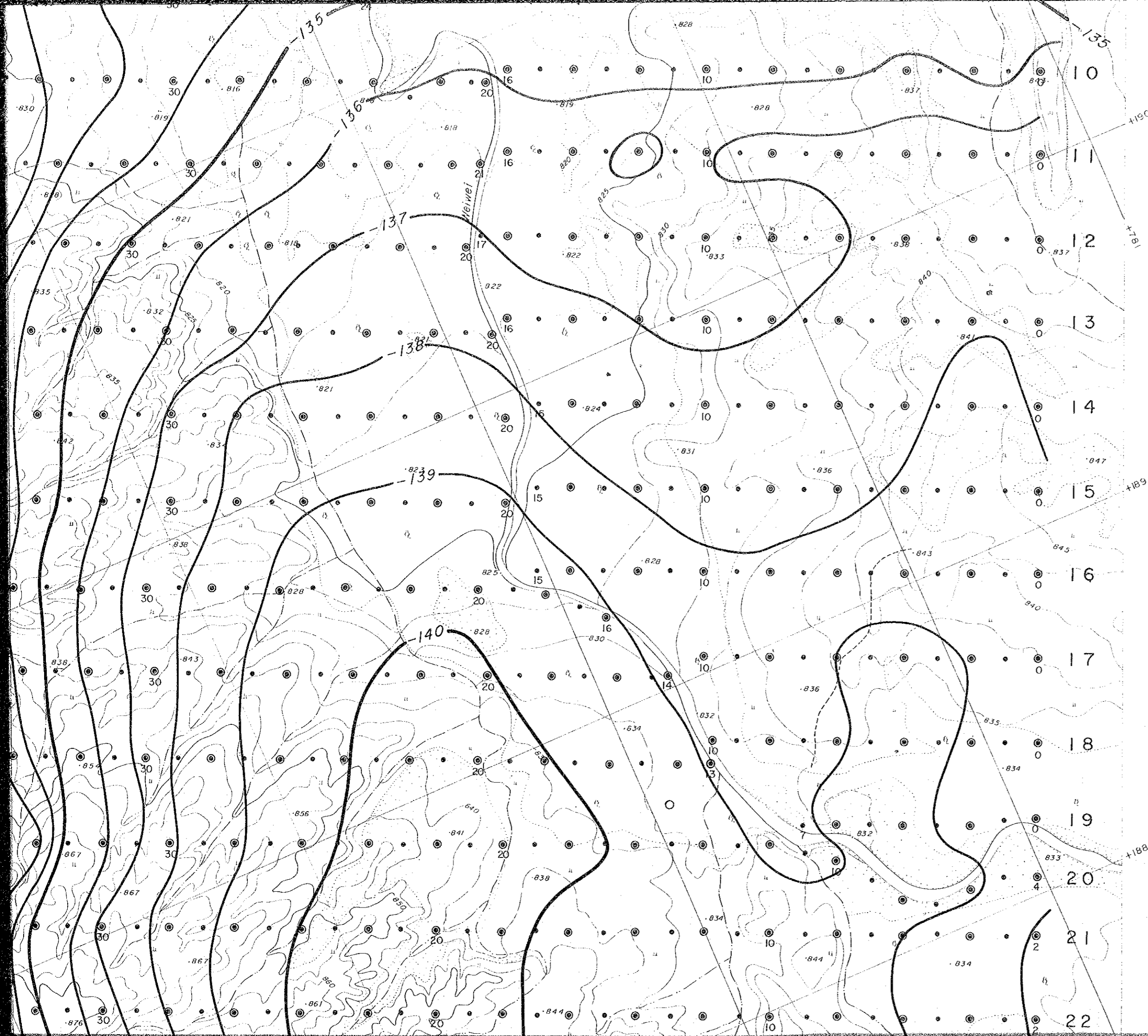




• 10 Magne

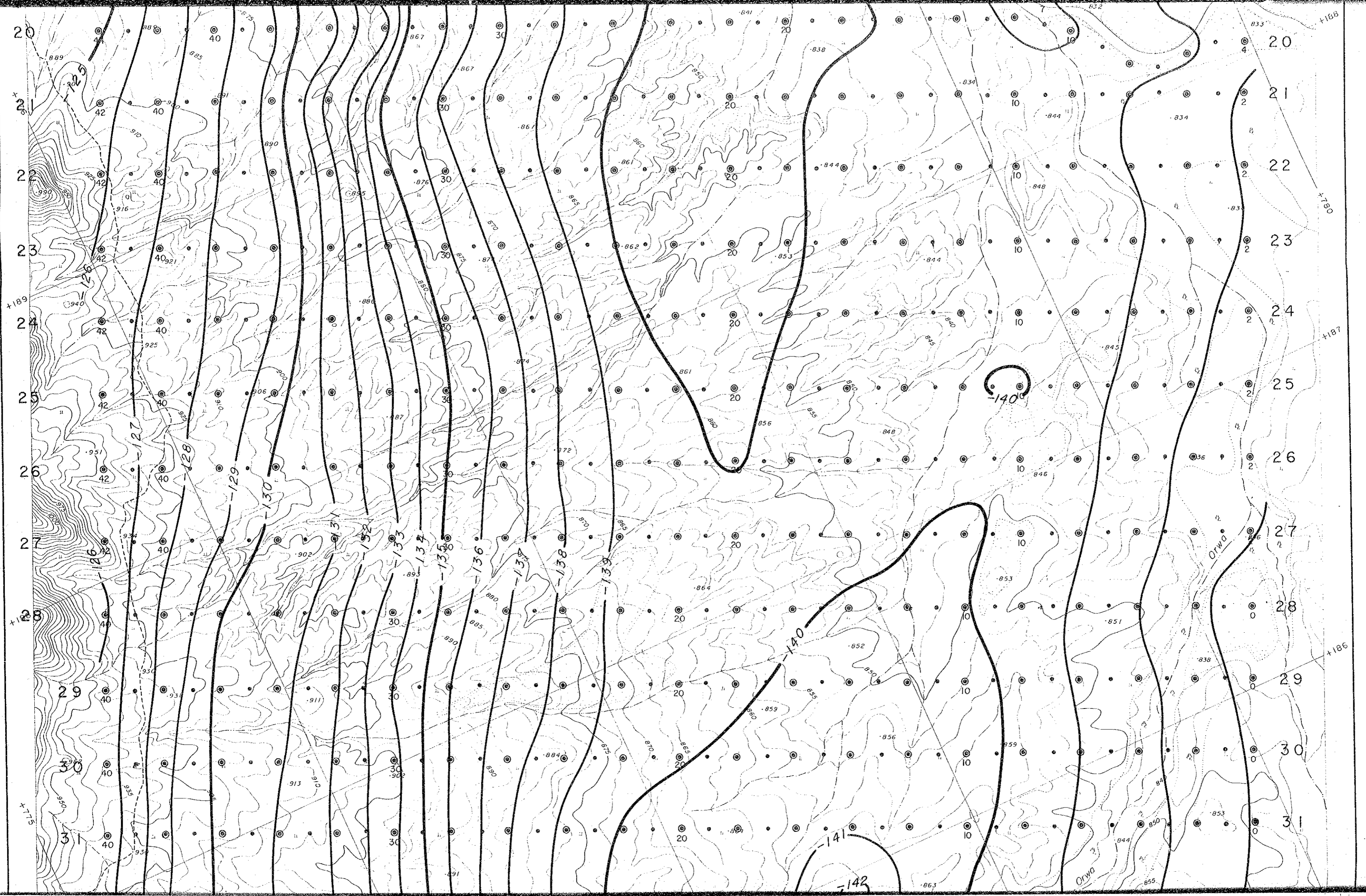
⊙ 10 Magne

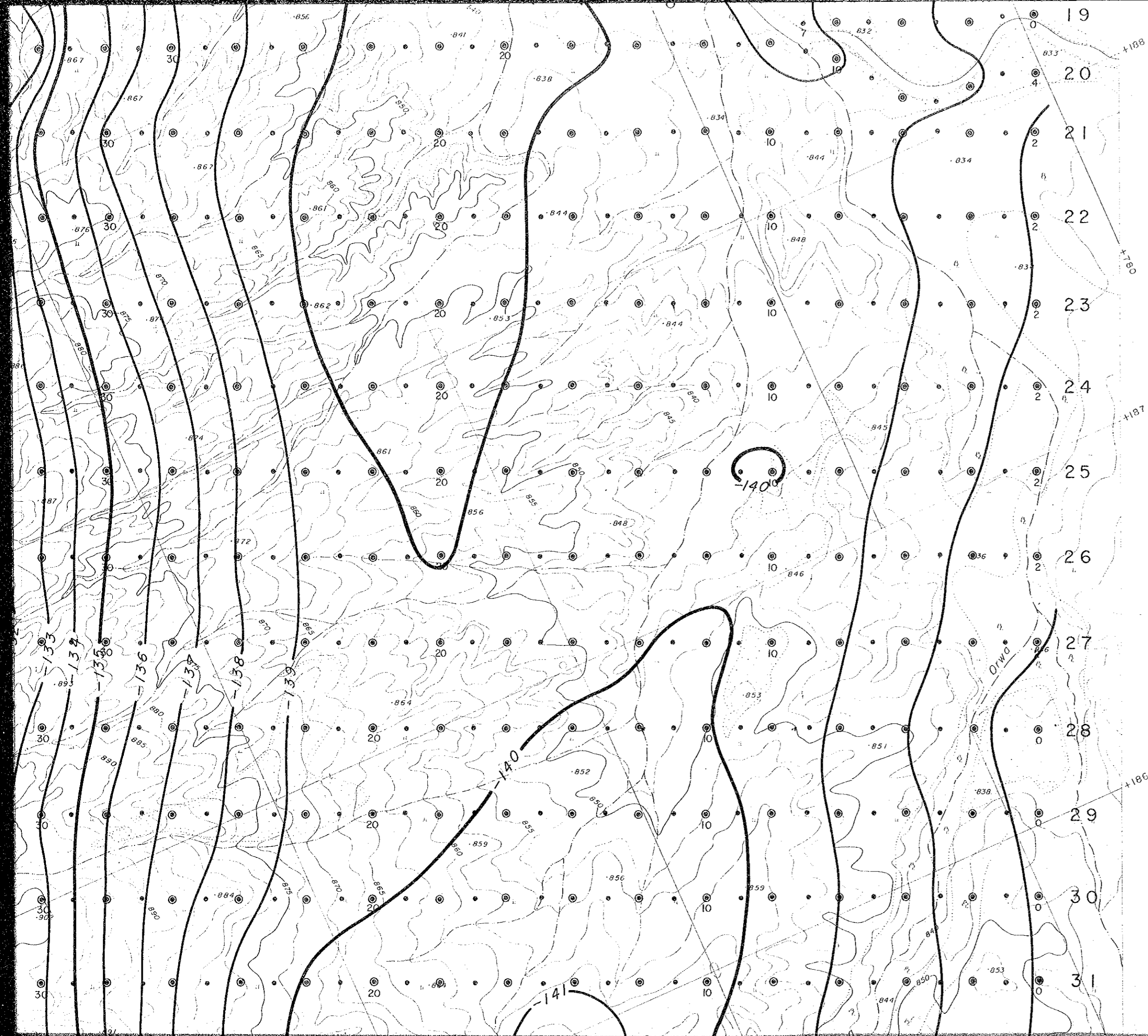


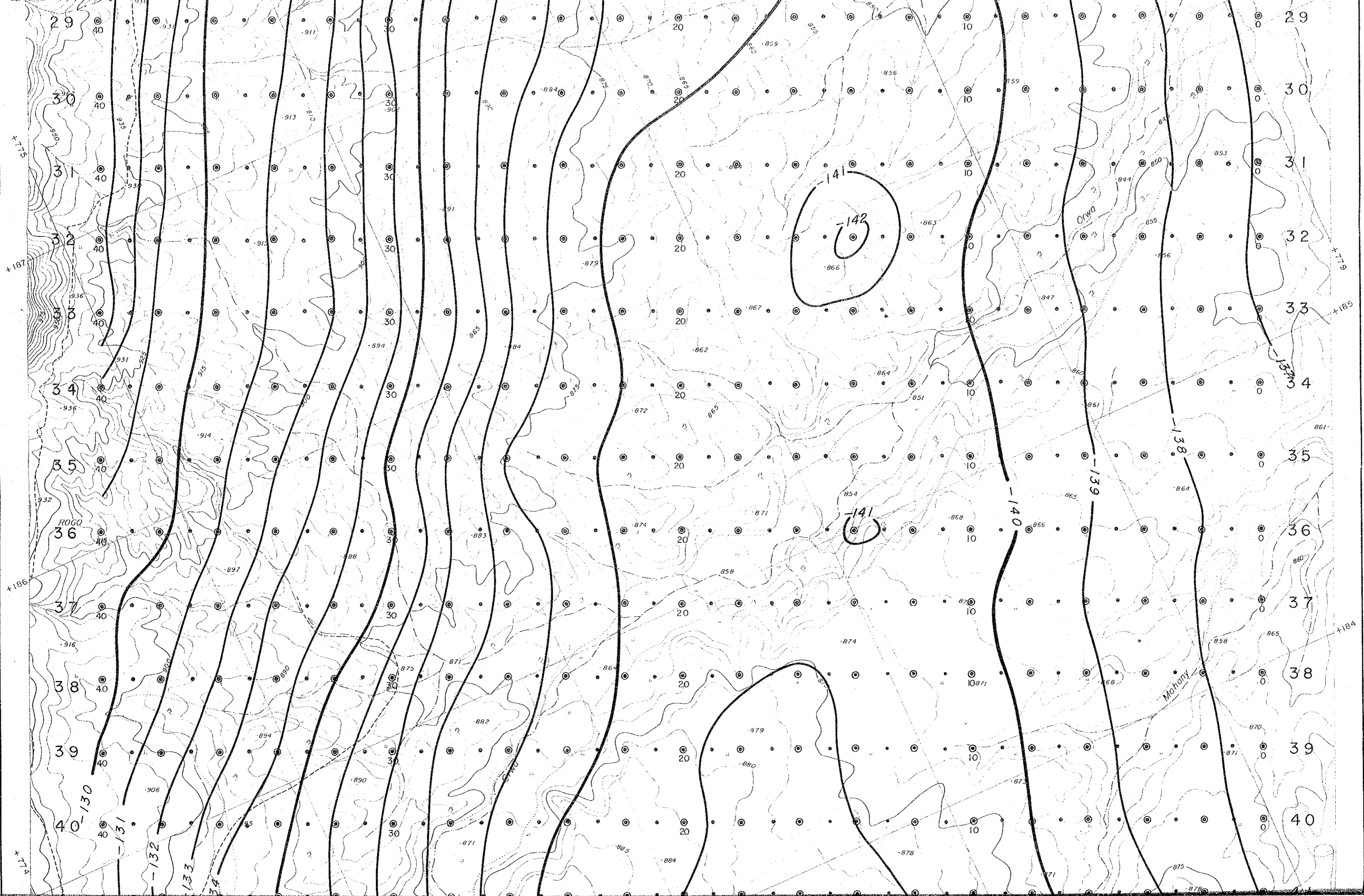


LEGEND

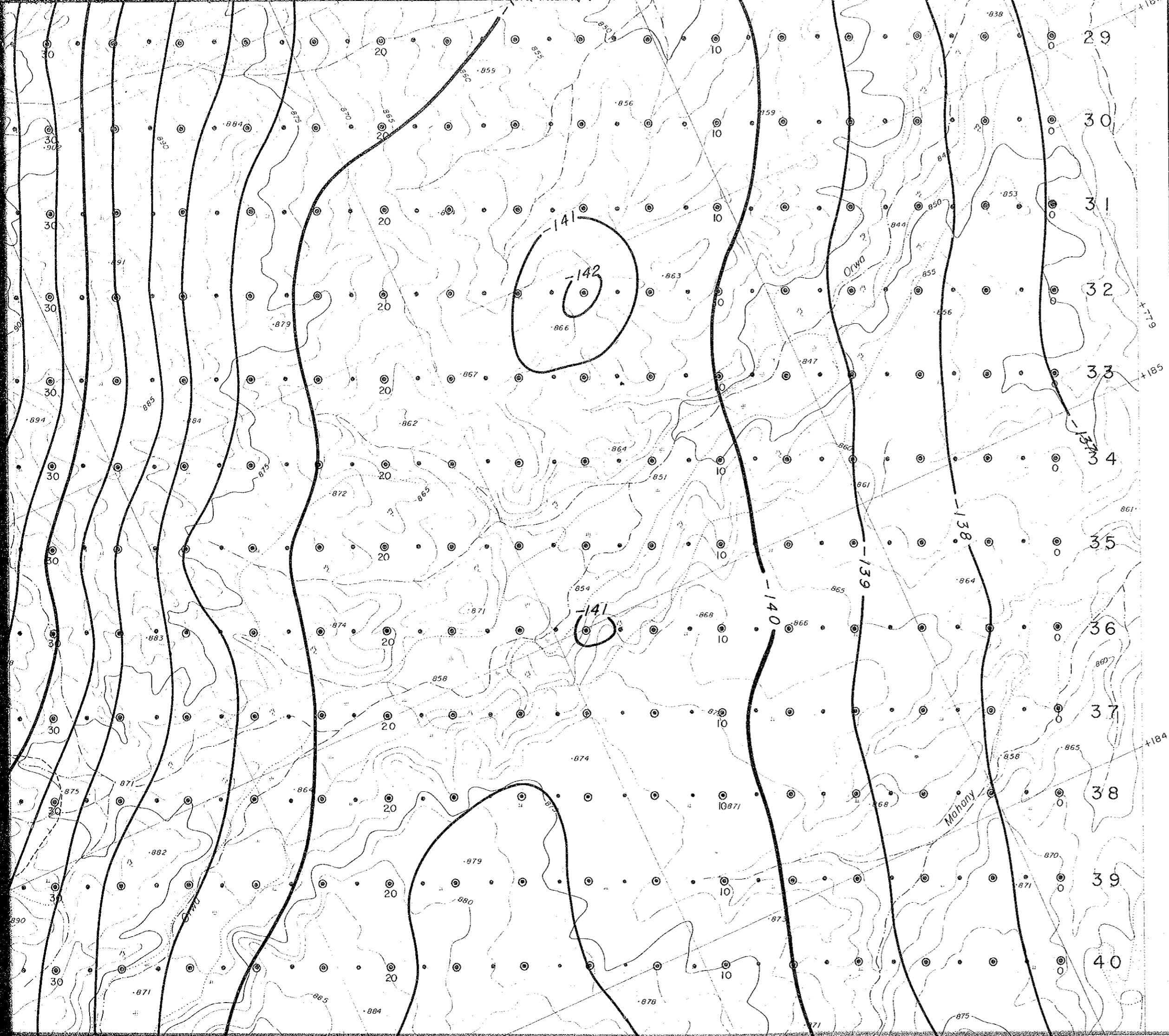
- ⊙ Magnetic Observation Point and its Number
- ⊙<sub>10</sub> Magnetic and Gravity Observation Point and its Number
- ~ 1 mgal
- ~ 5 mgal

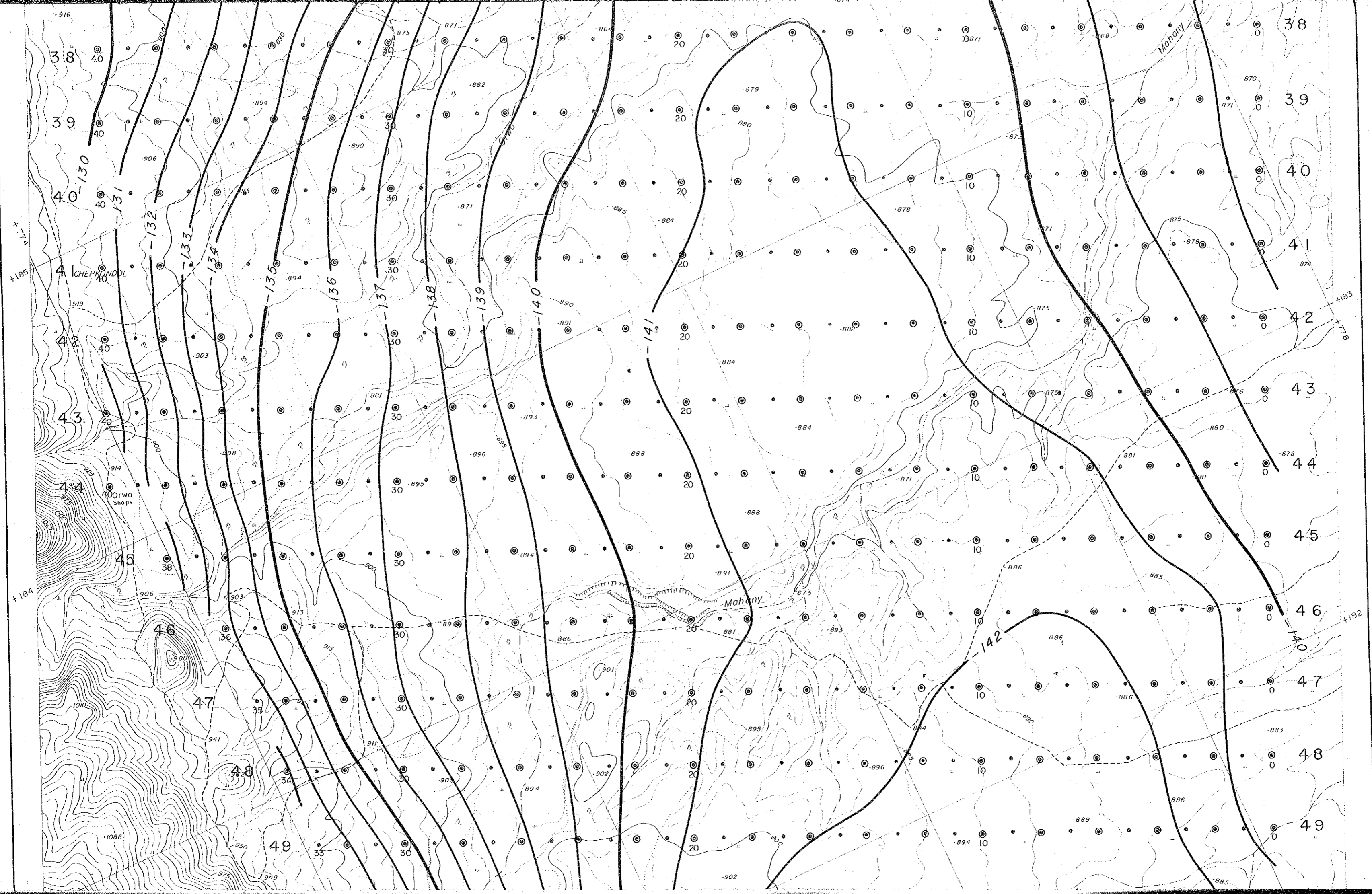


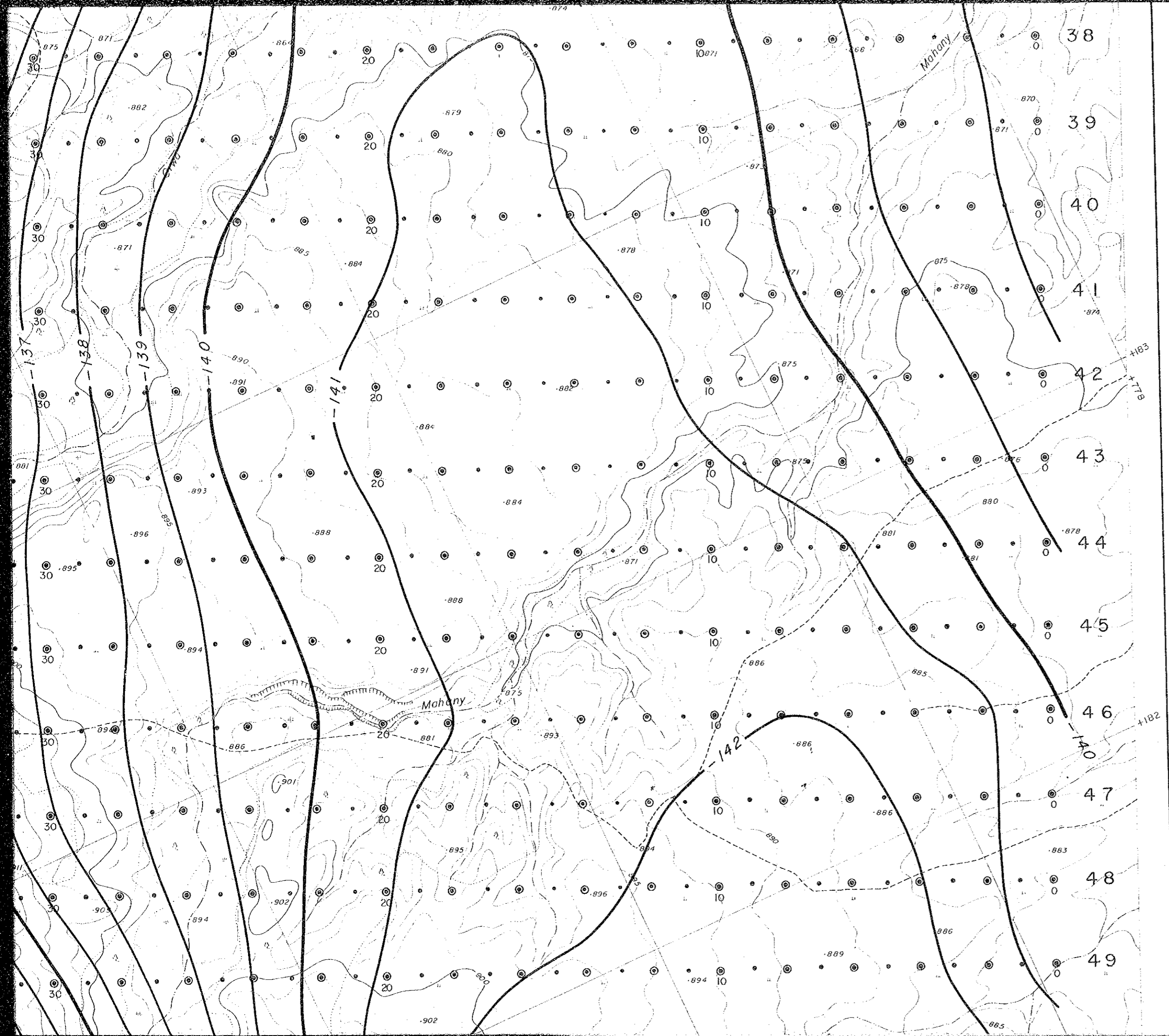


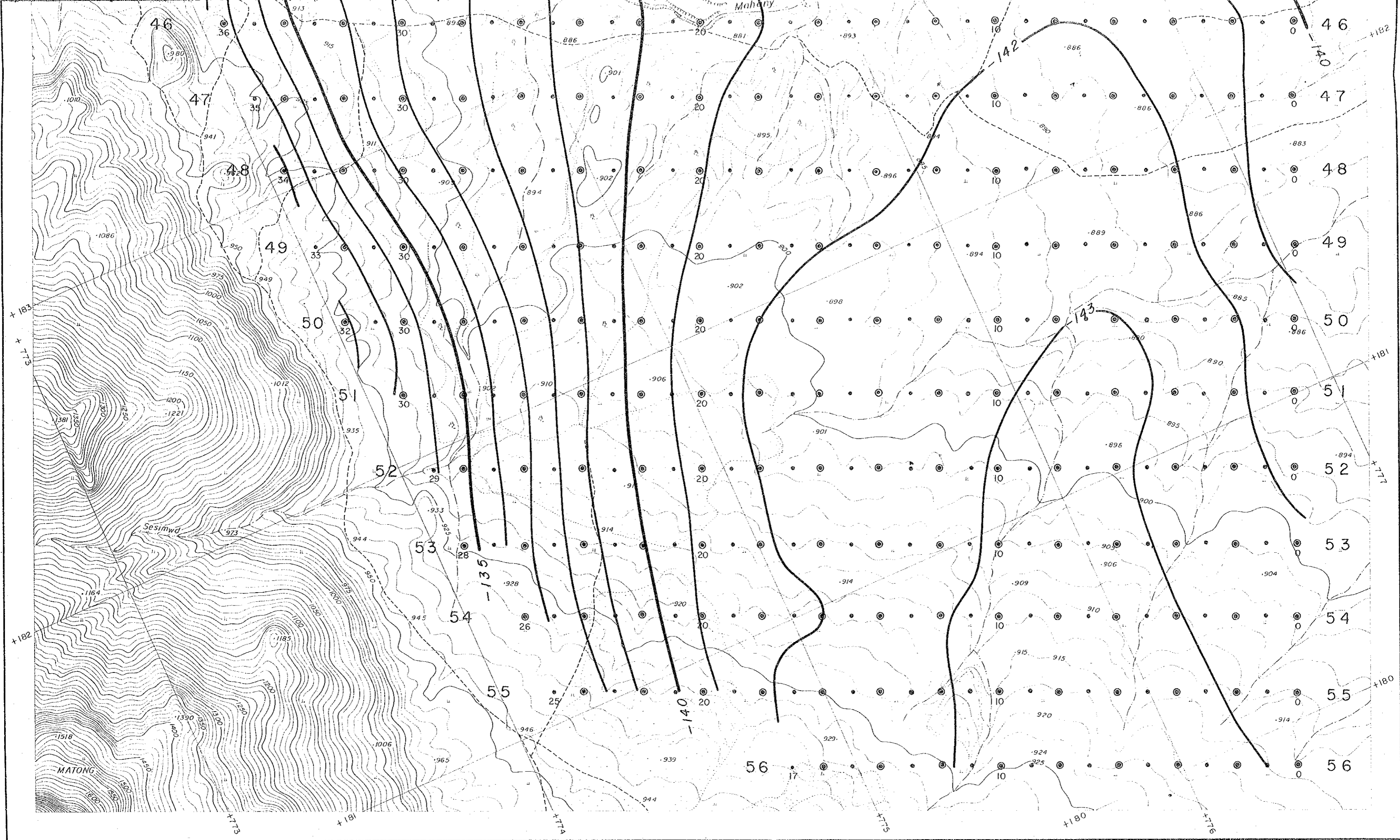




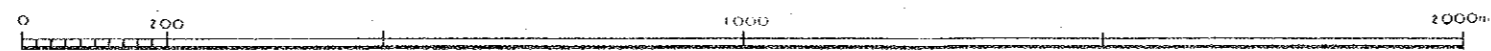




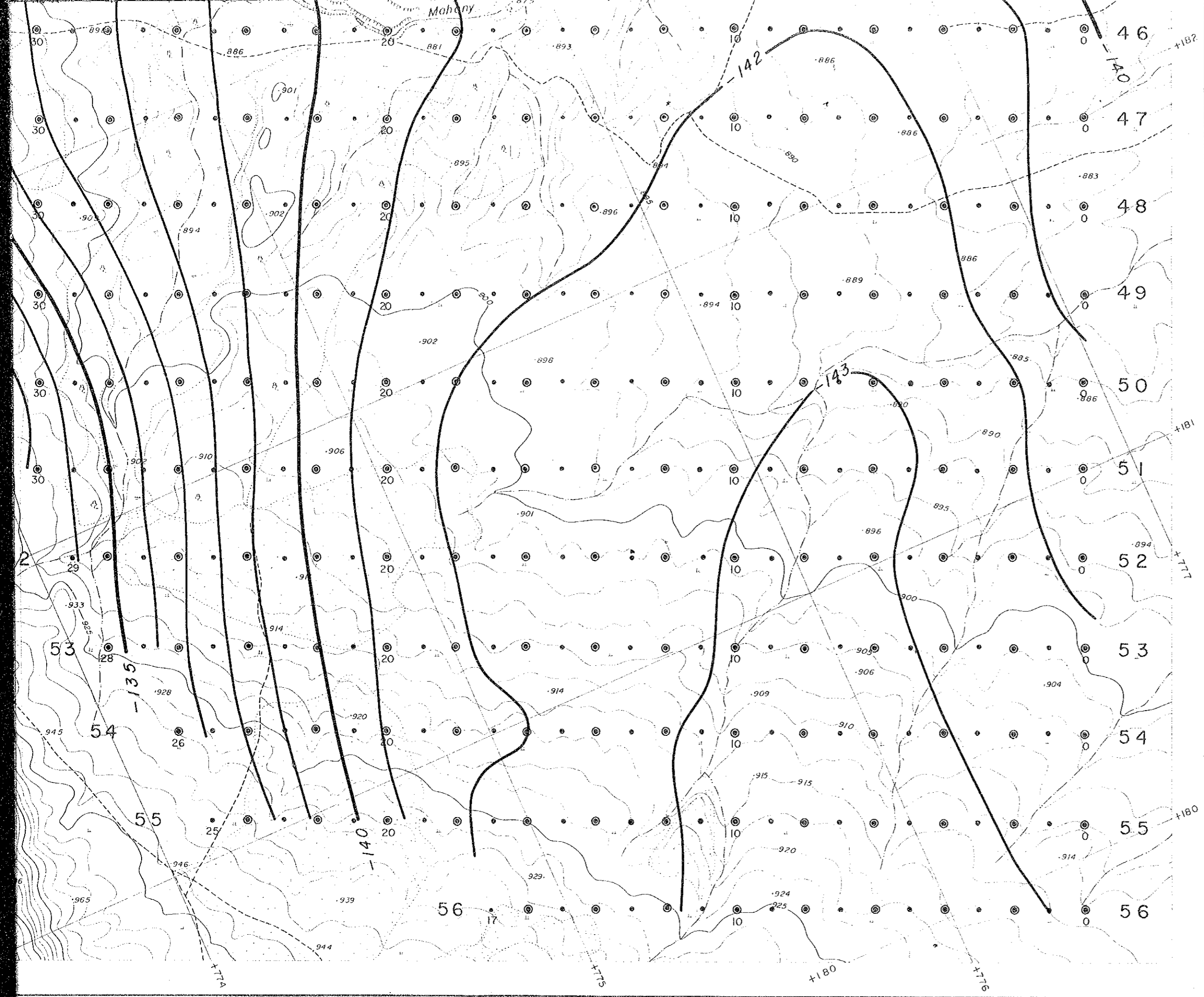




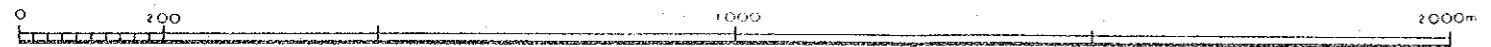
1:10,000



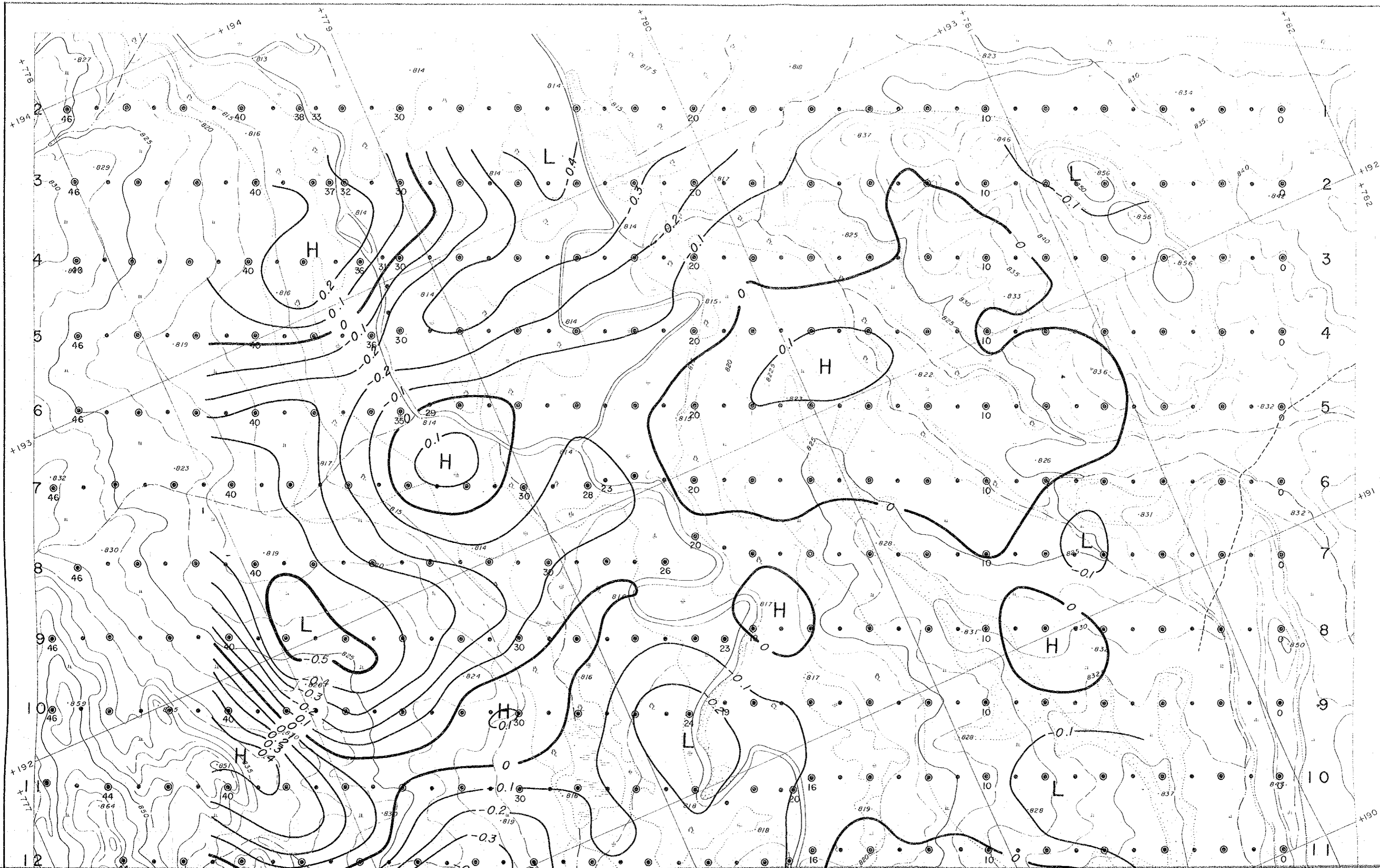
COOPERATIVE MINERAL EXPLORATION  
IN THE KERIO VALLEY DEVELOPMENT  
AUTHORITY AREA



1:10,000

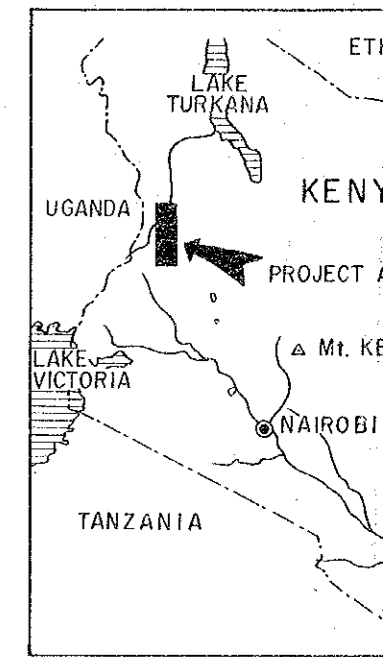


COOPERATIVE MINERAL EXPLORATION  
IN THE KERIO VALLEY DEVELOPMENT  
AUTHORITY AREA



THE KERIO V

R



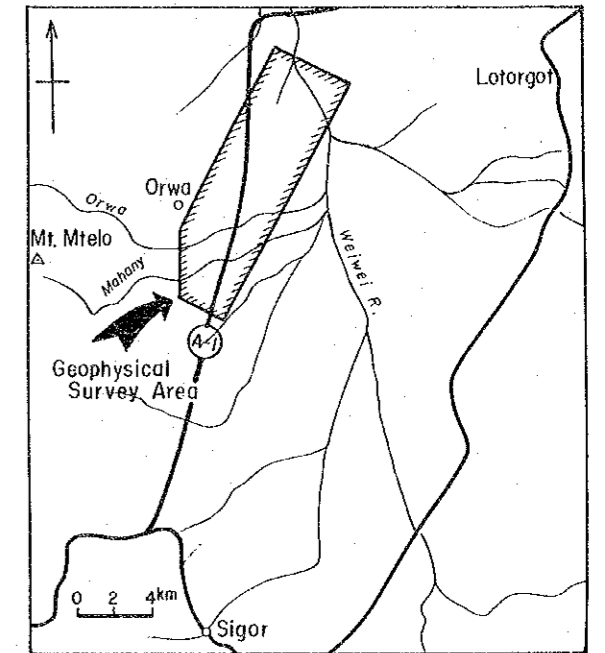
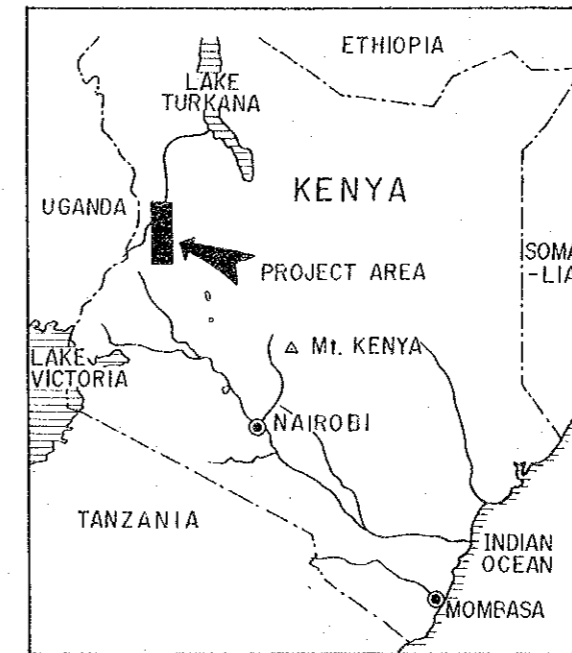
0 100 200

MINERAL EXPLORATION  
IN  
THE KERIO VALLEY DEVELOPMENT AUTHORITY AREA  
(PHASE III)

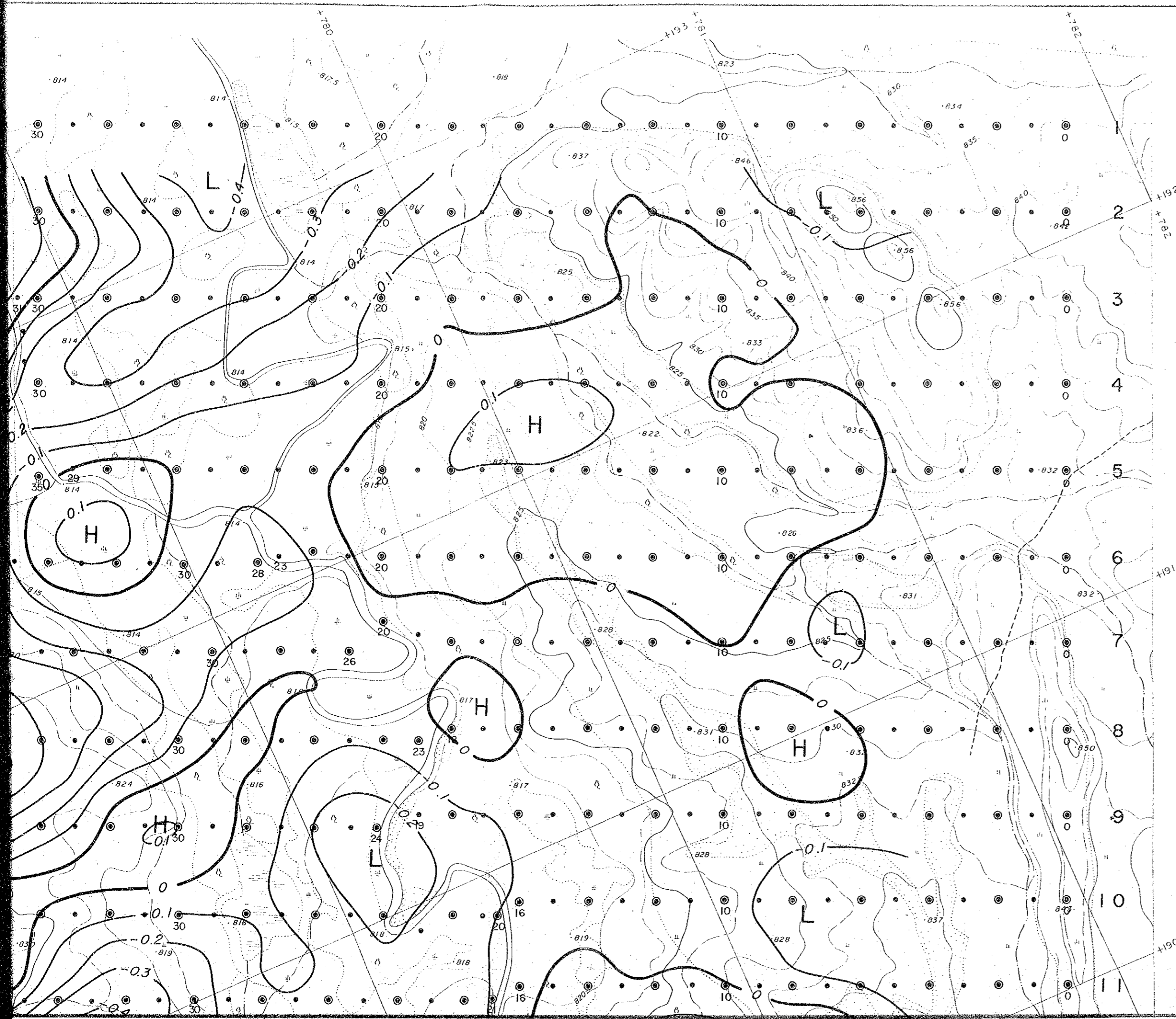
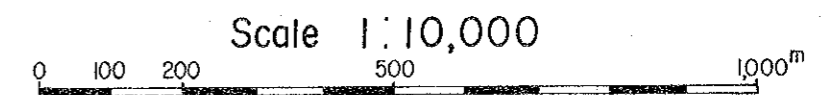
RESIDUAL MAP

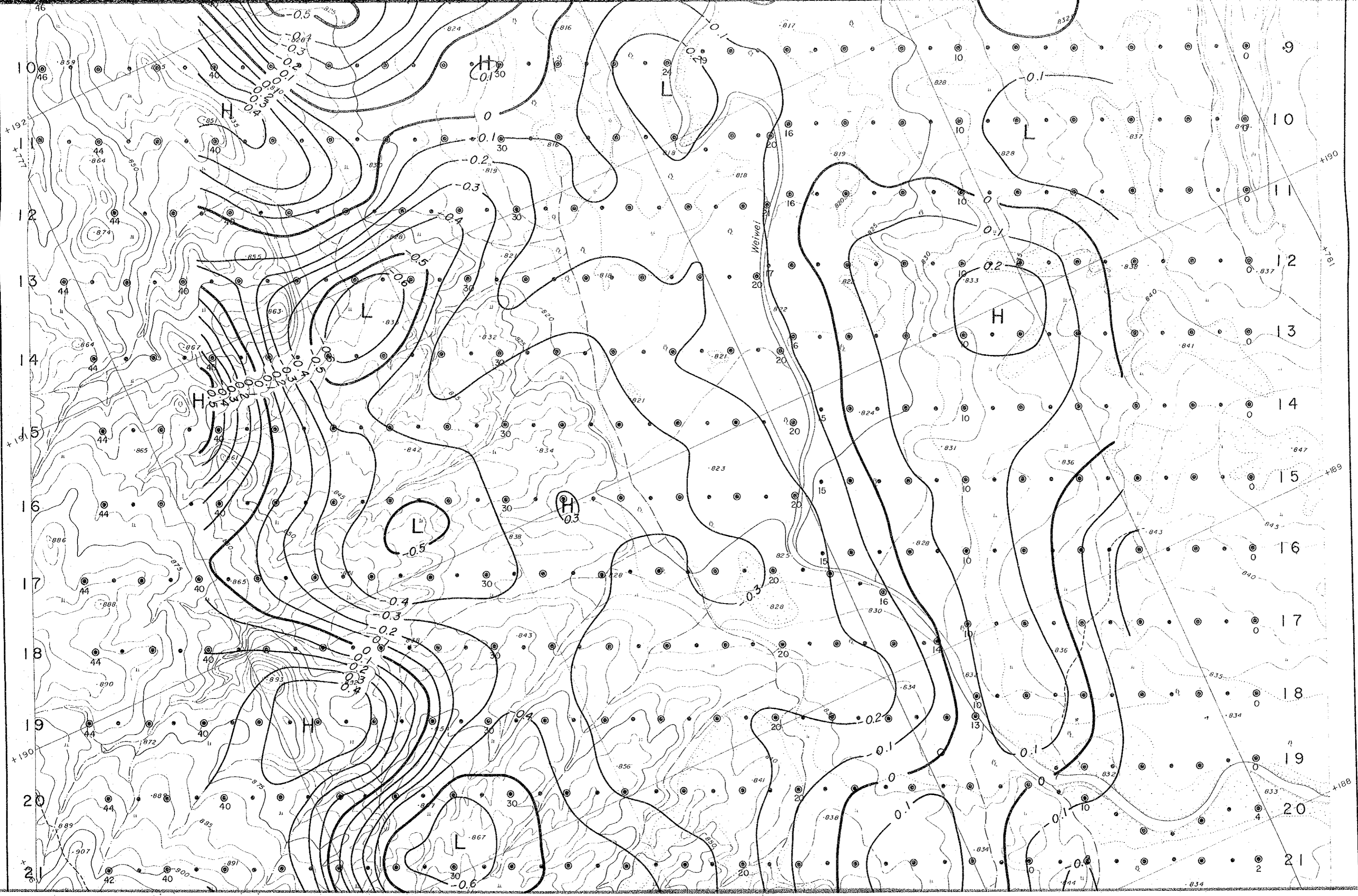
国際協力事業団  
12643  
図書資料室蔵書

LOCATION INDEX



JAPAN INTERNATIONAL COOPERATION AGENCY  
METAL MINING AGENCY OF JAPAN  
December 1985





0 100 200

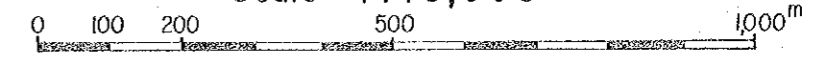
• Magnetic

⊙ Magnetic



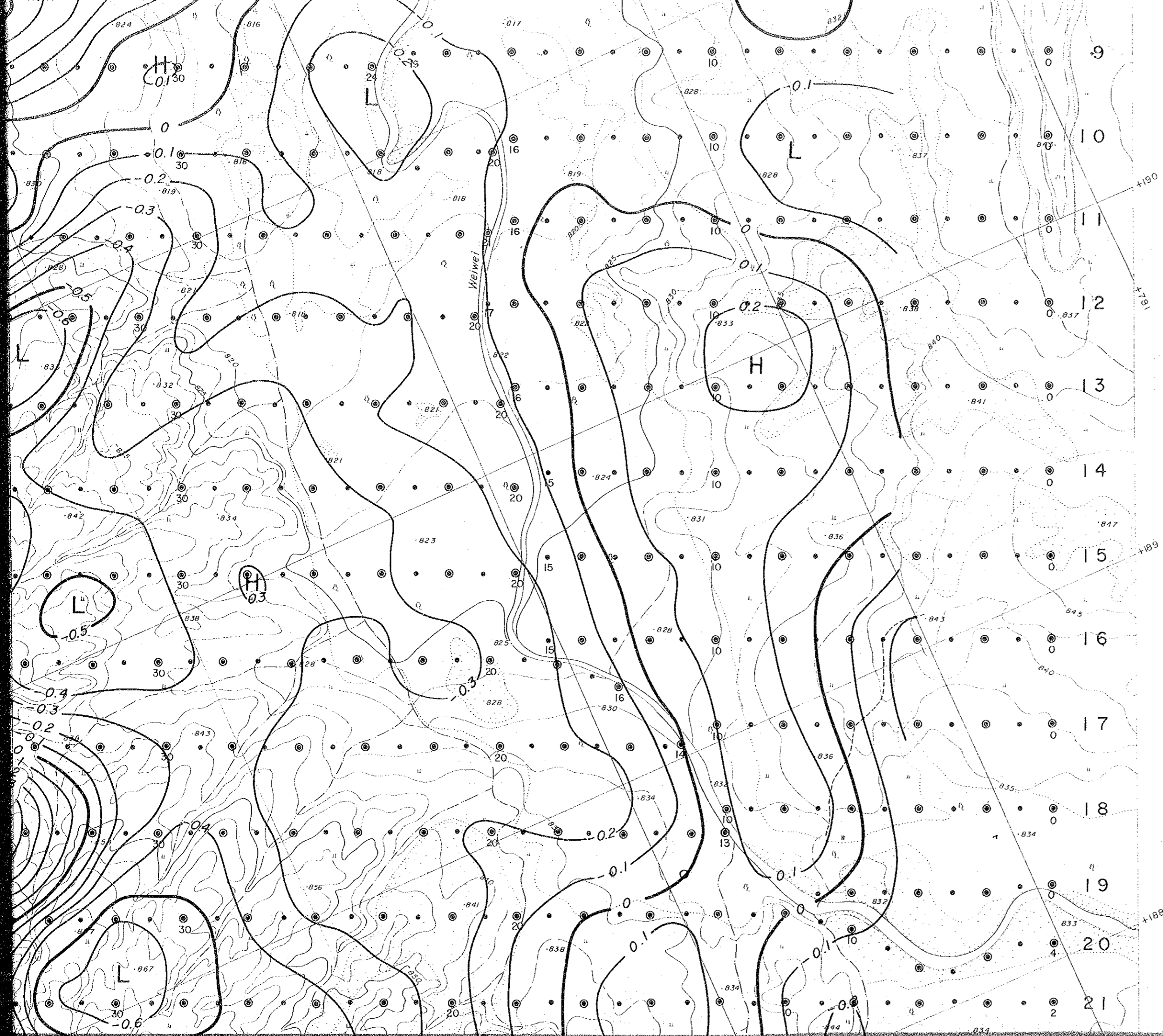


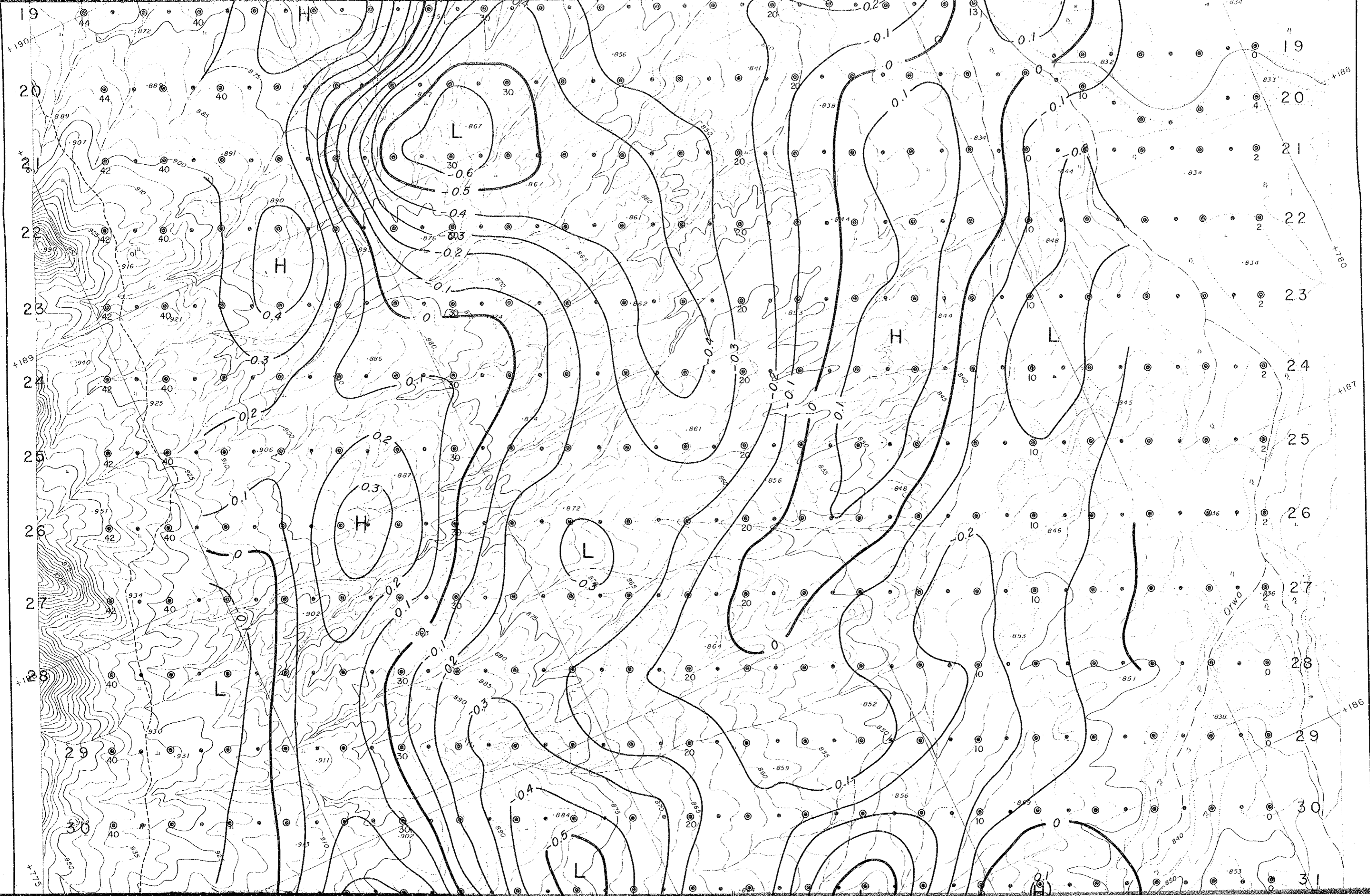
Scale 1:10,000

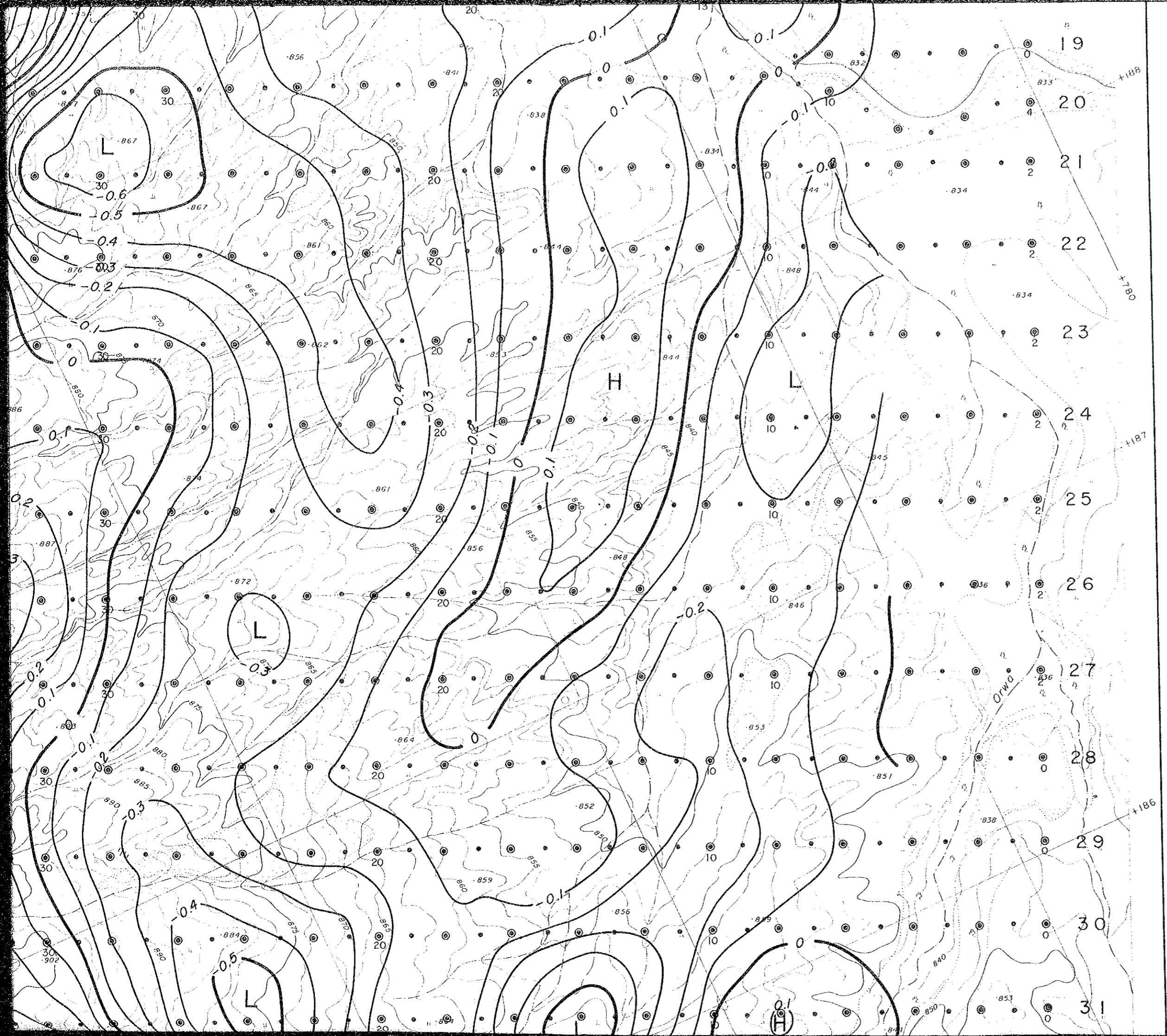


### LEGEND

- ⊙ Magnetic Observation Point and its Number
- ⊕ Magnetic and Gravity Observation Point and its Number
- ~ 0.1 mgal
- ~ 0.5 mgal







19

20

21

22

23

24

25

26

27

28

29

30

31

+188

+180

+187

+186

Orwa

(T)

