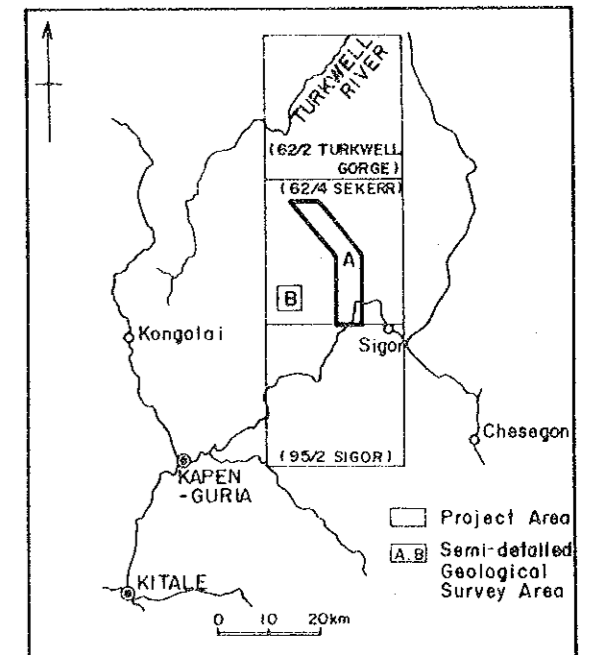
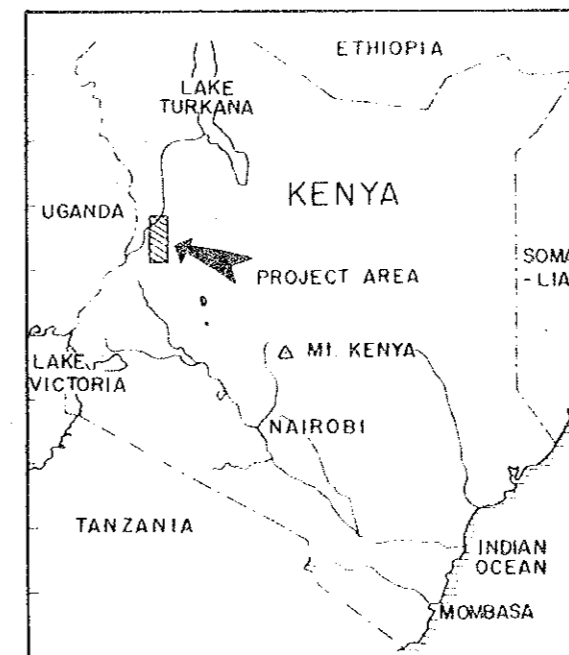


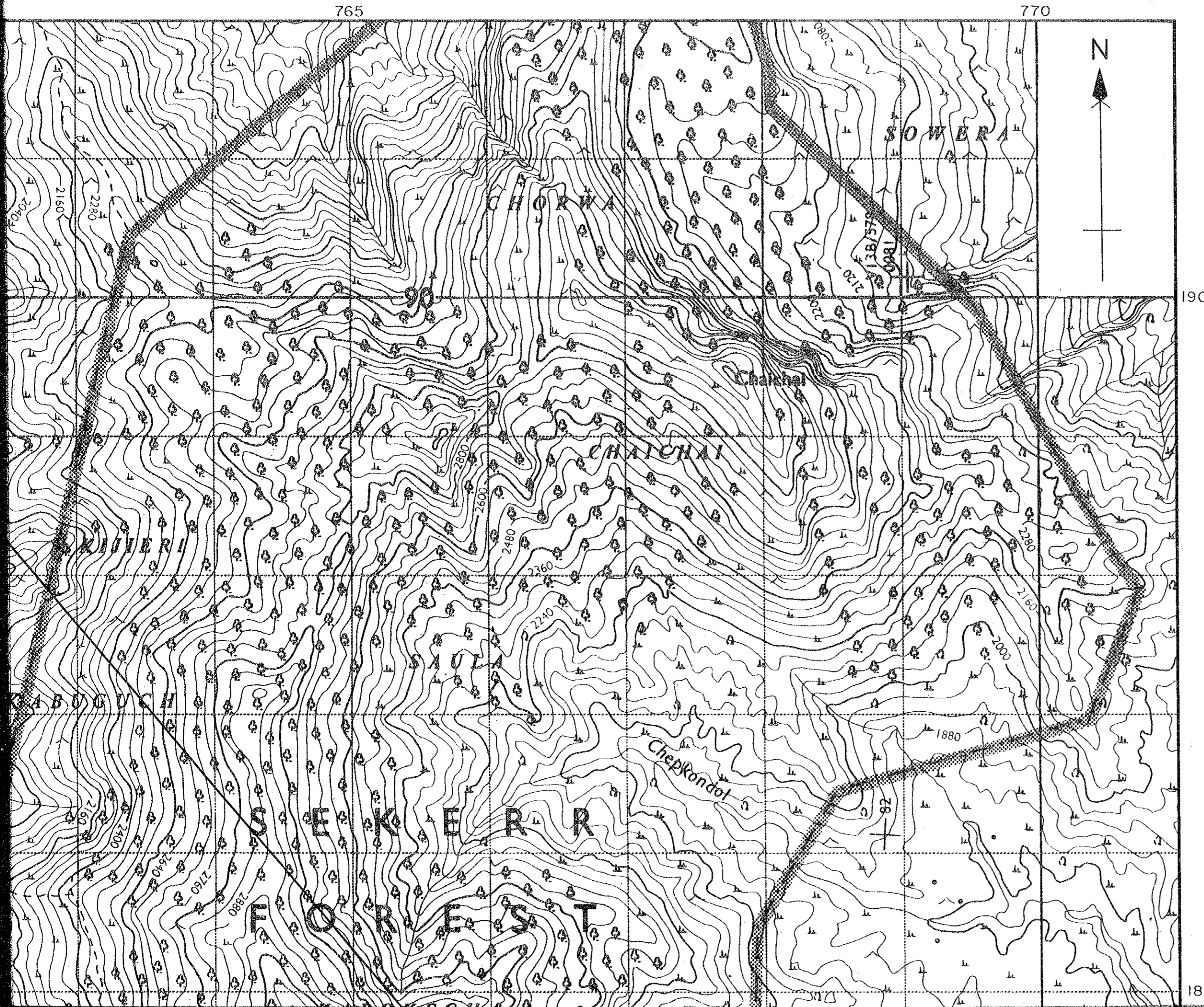
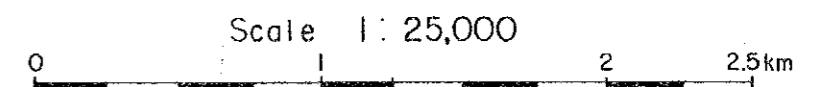
MINERAL EXPLORATION
IN
THE KERIO VALLEY DEVELOPMENT AUTHORITY AREA
(PHASE I)

LOCATION MAP OF SOIL
SAMPLES, SEMI-DETAILED
SURVEY AREA A

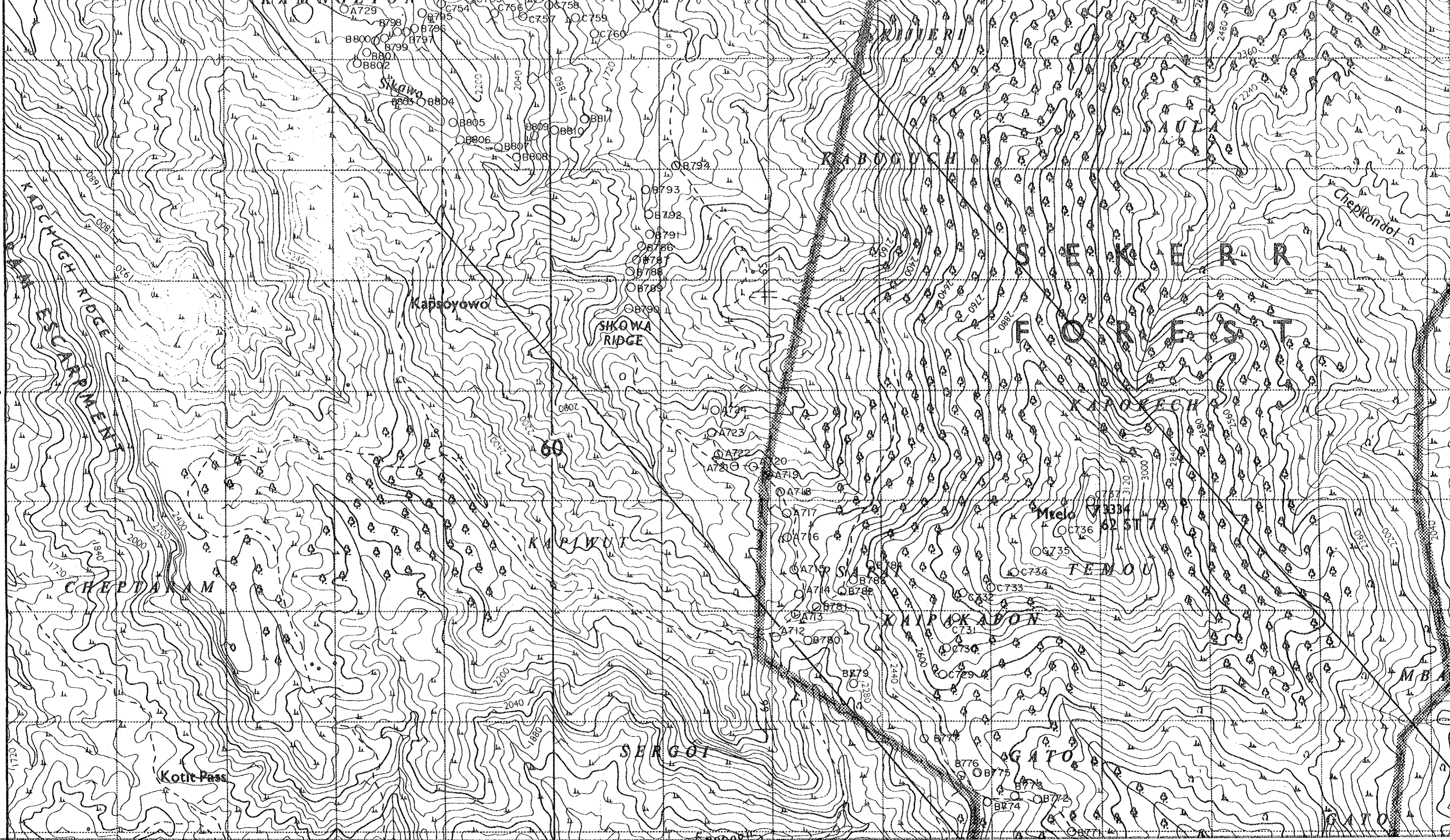
LOCATION INDEX

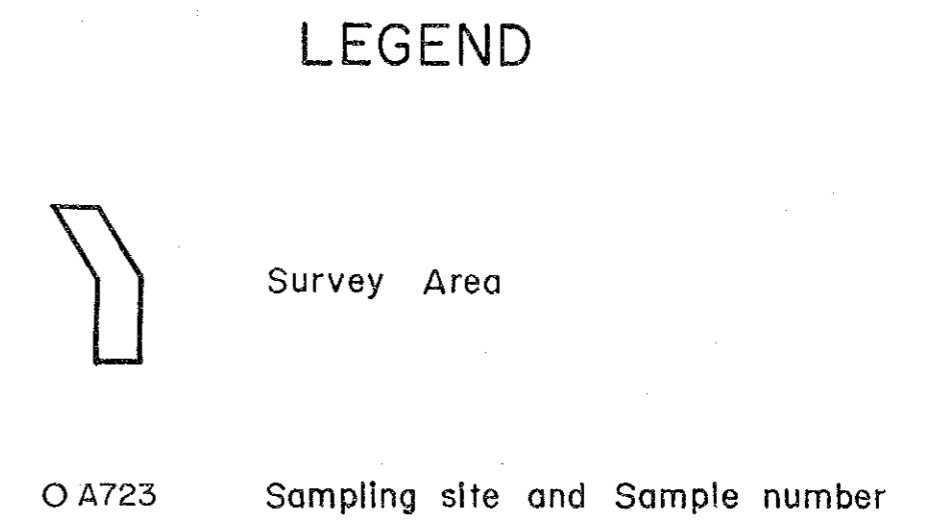
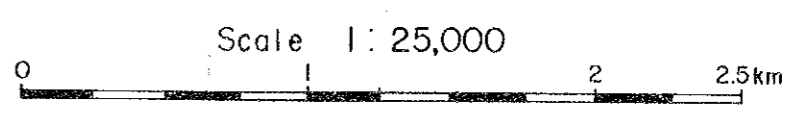
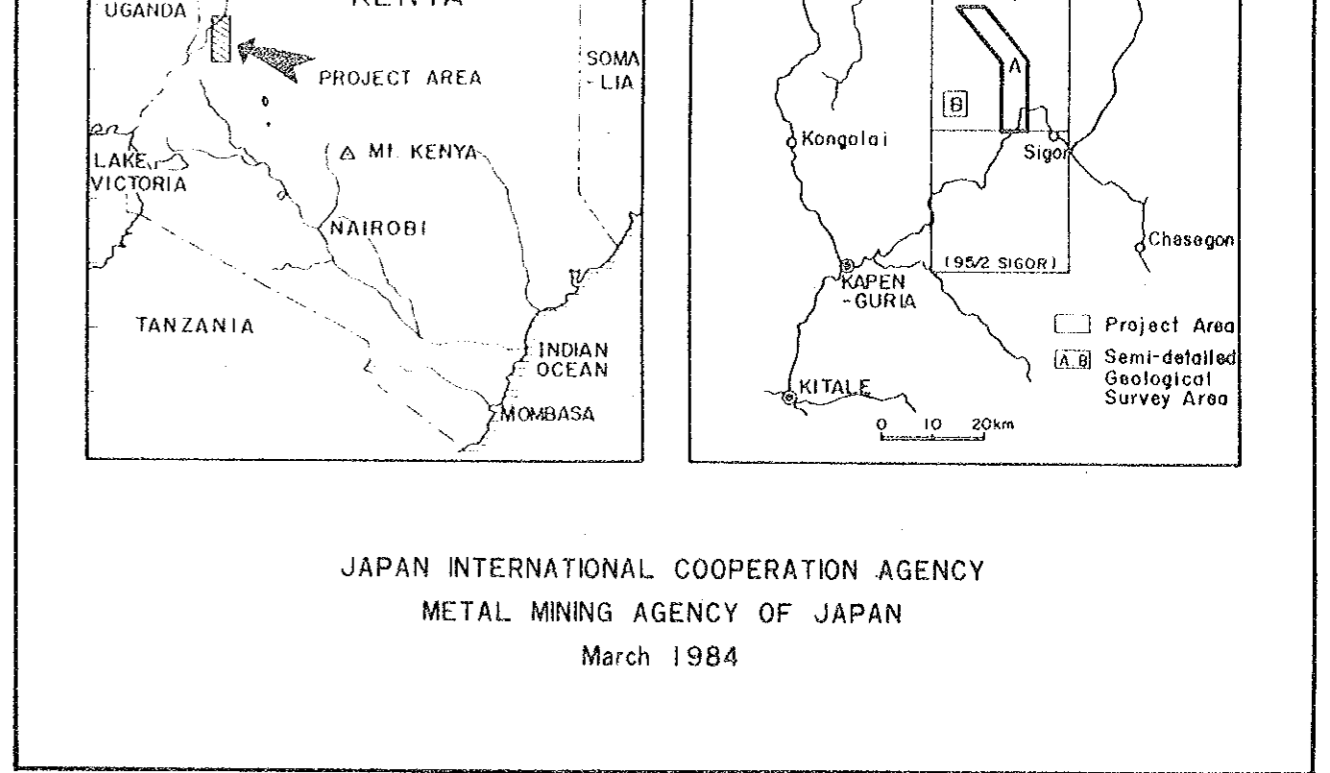
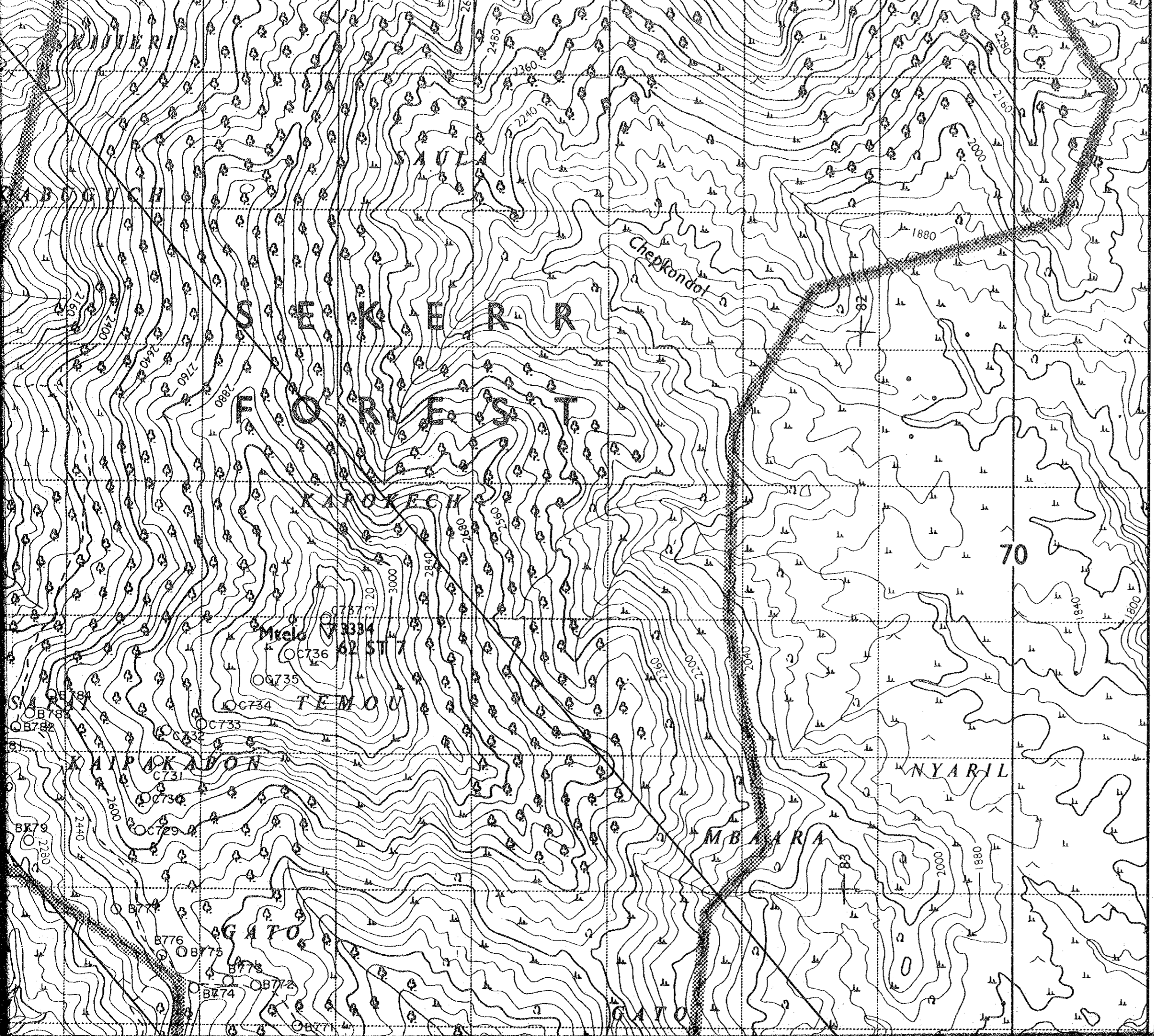


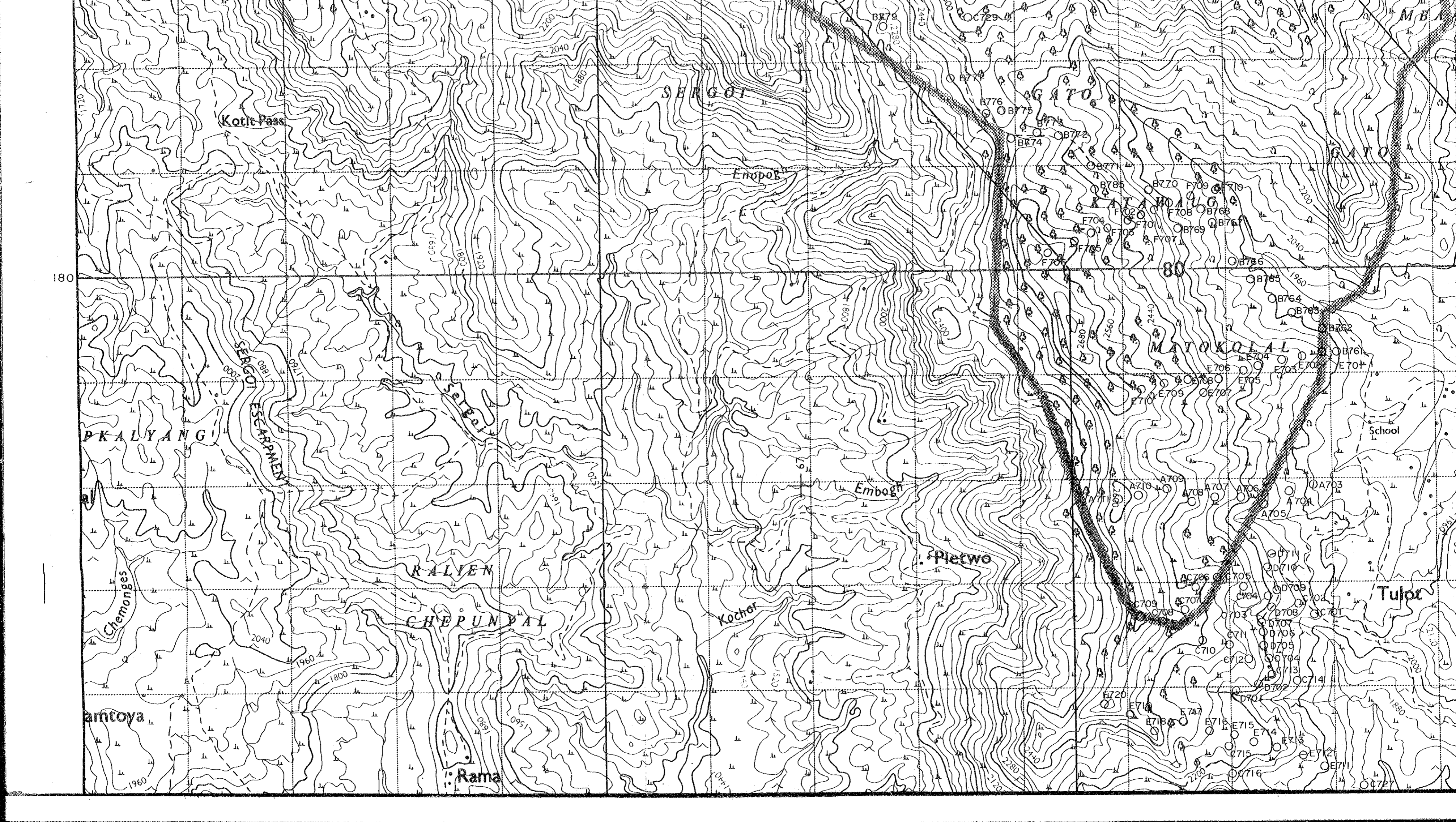
JAPAN INTERNATIONAL COOPERATION AGENCY
METAL MINING AGENCY OF JAPAN
March 1984



185







Kotic Pass

SENGCOI

Enopob

AGAYO

AGAYO

180

80

PKALYANG

SENGCOI
ESAPPAEN

MAYOKOLAL

School

Emboh

Pletwo

Tuloc

RAIYEN

CHEPUNDAL

Kochar

Chemonges

amtoya

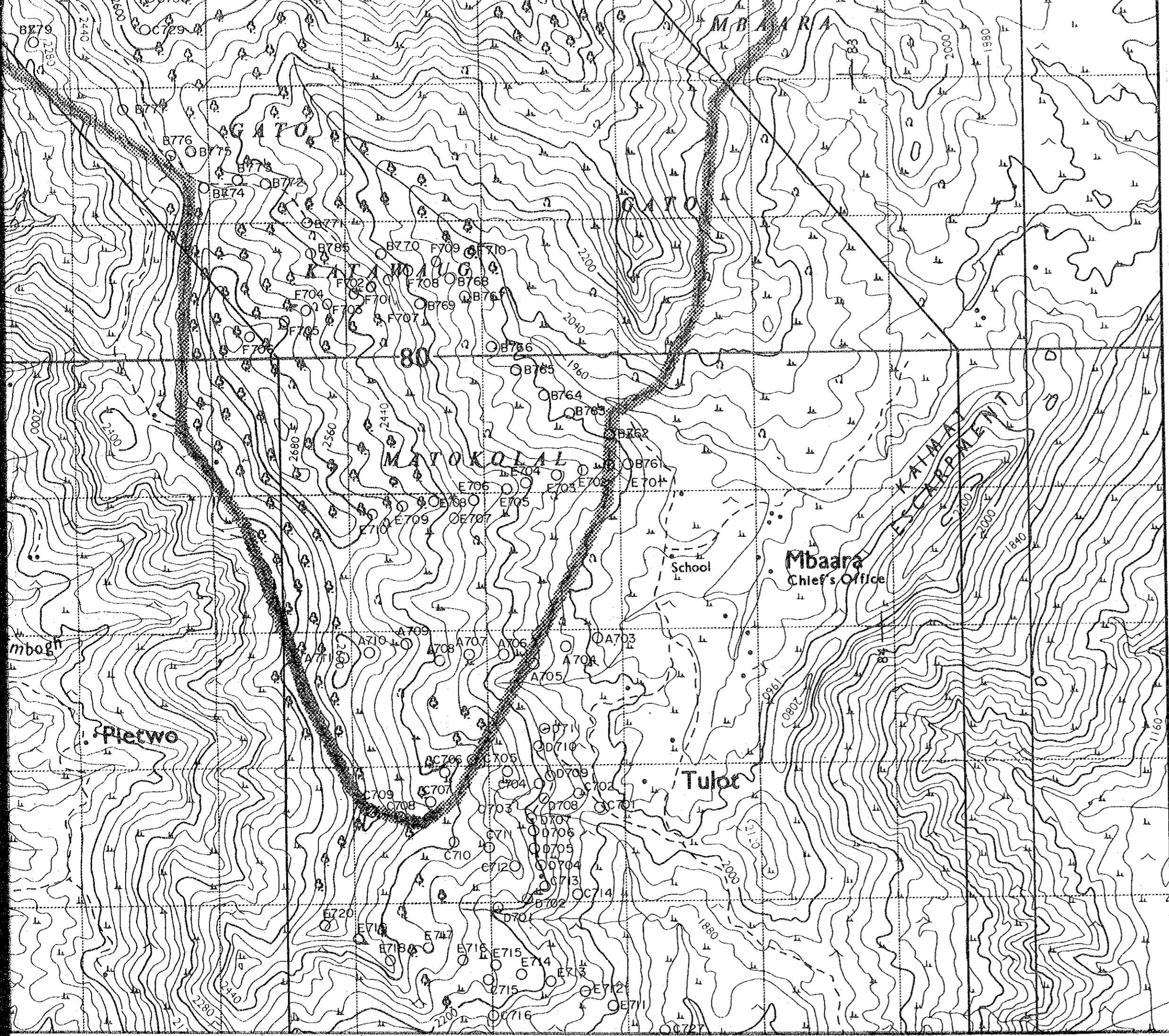
Rama

1960

2000

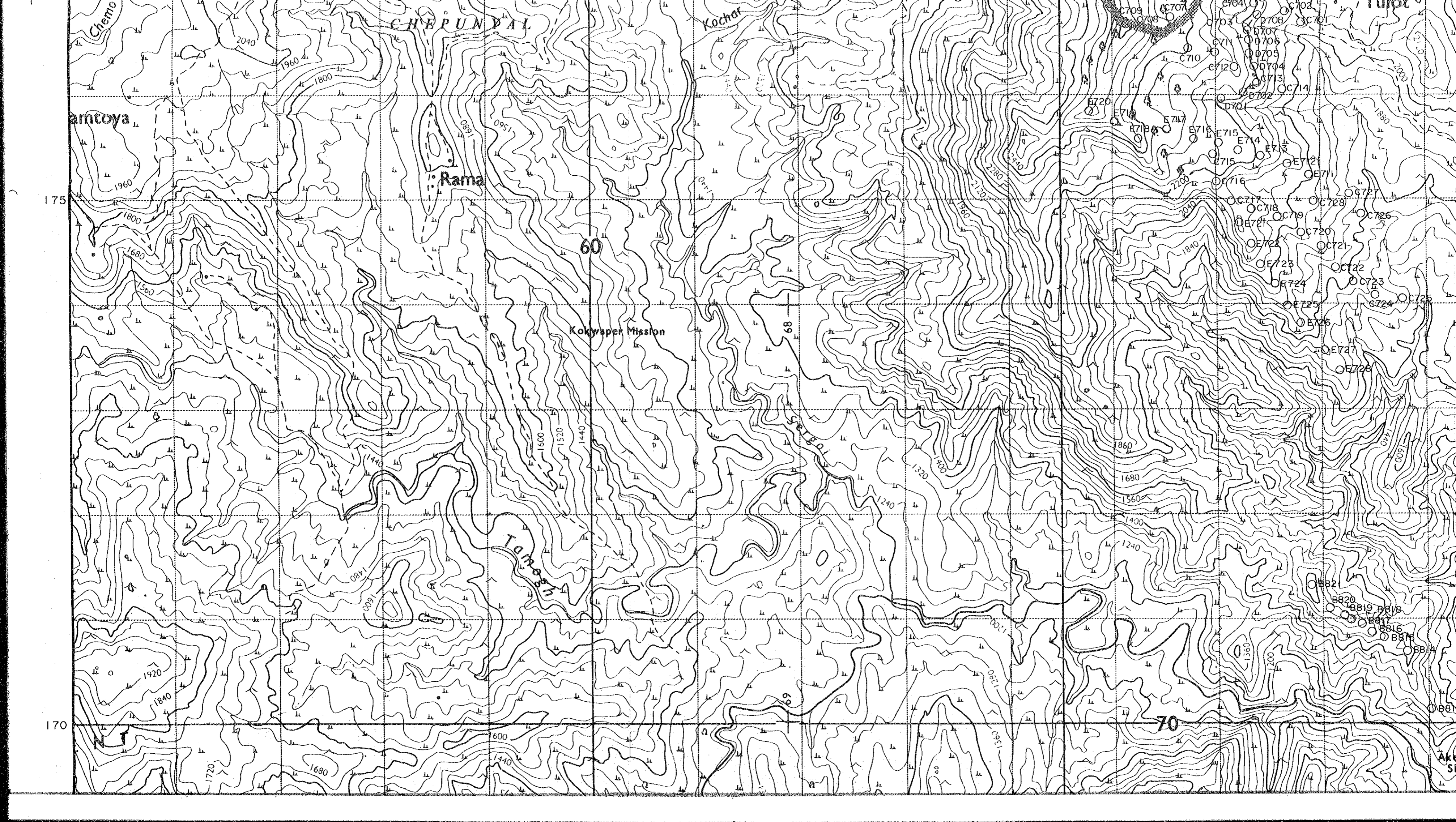
1880

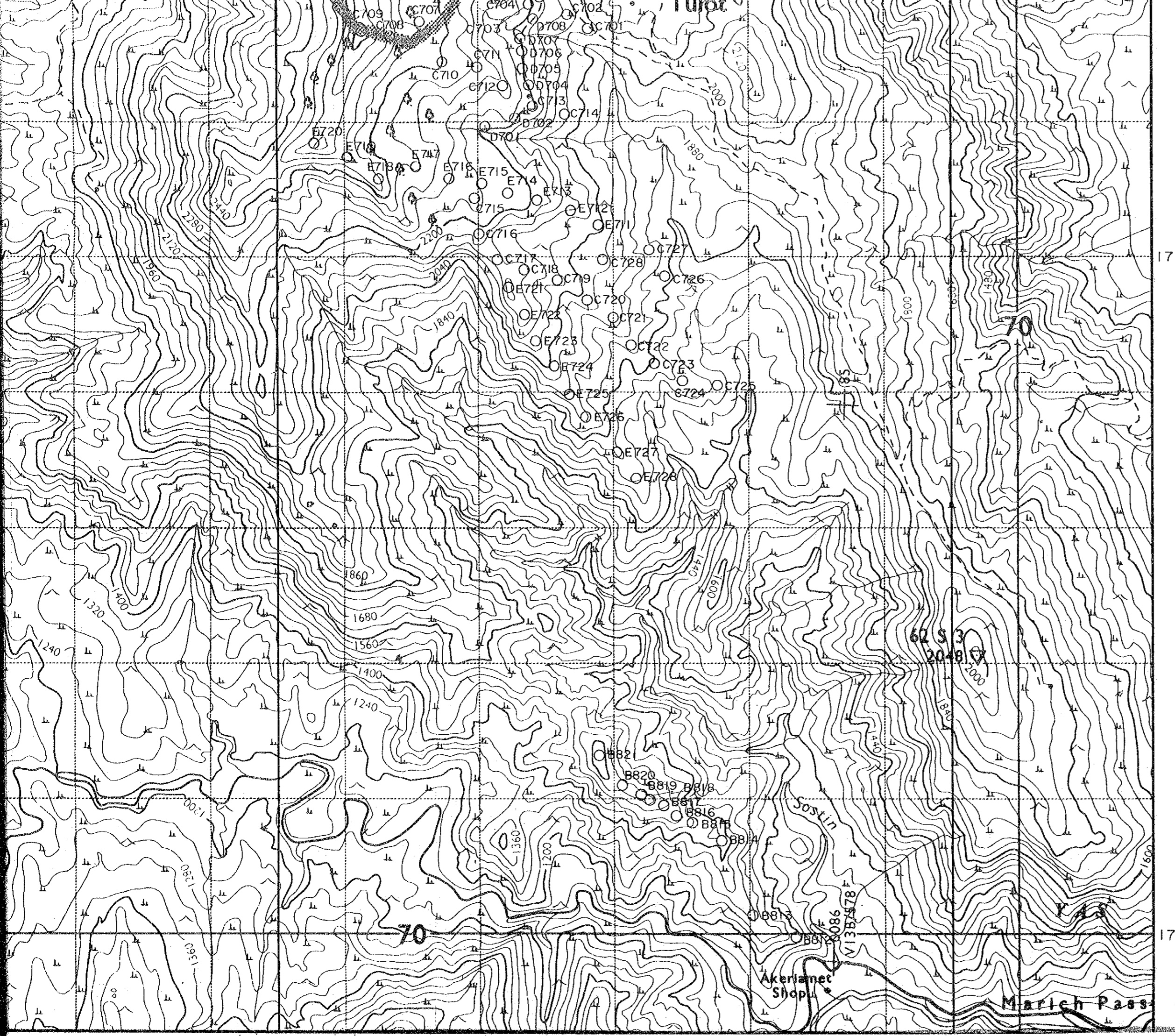
1960



180

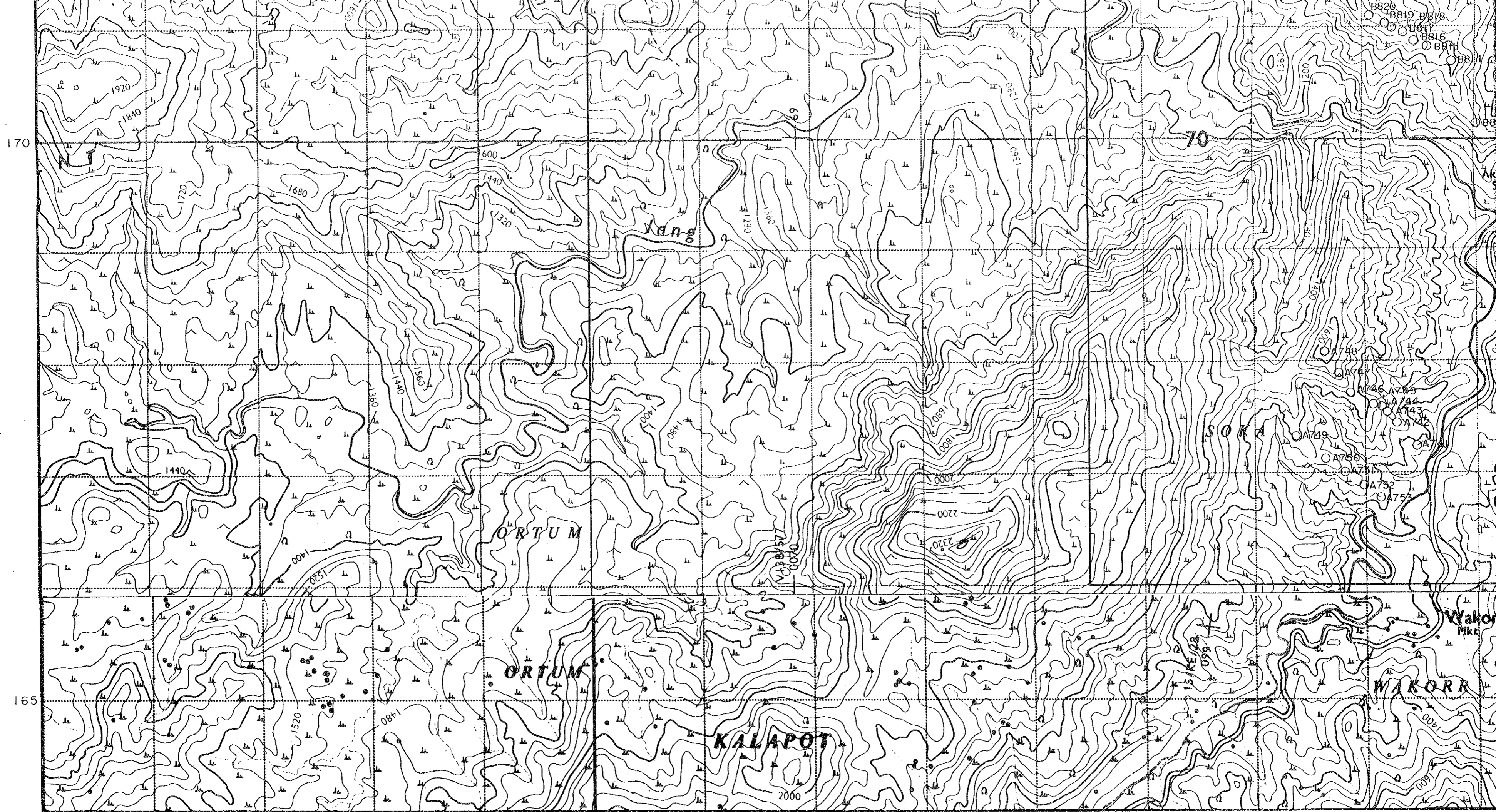
175





175

170



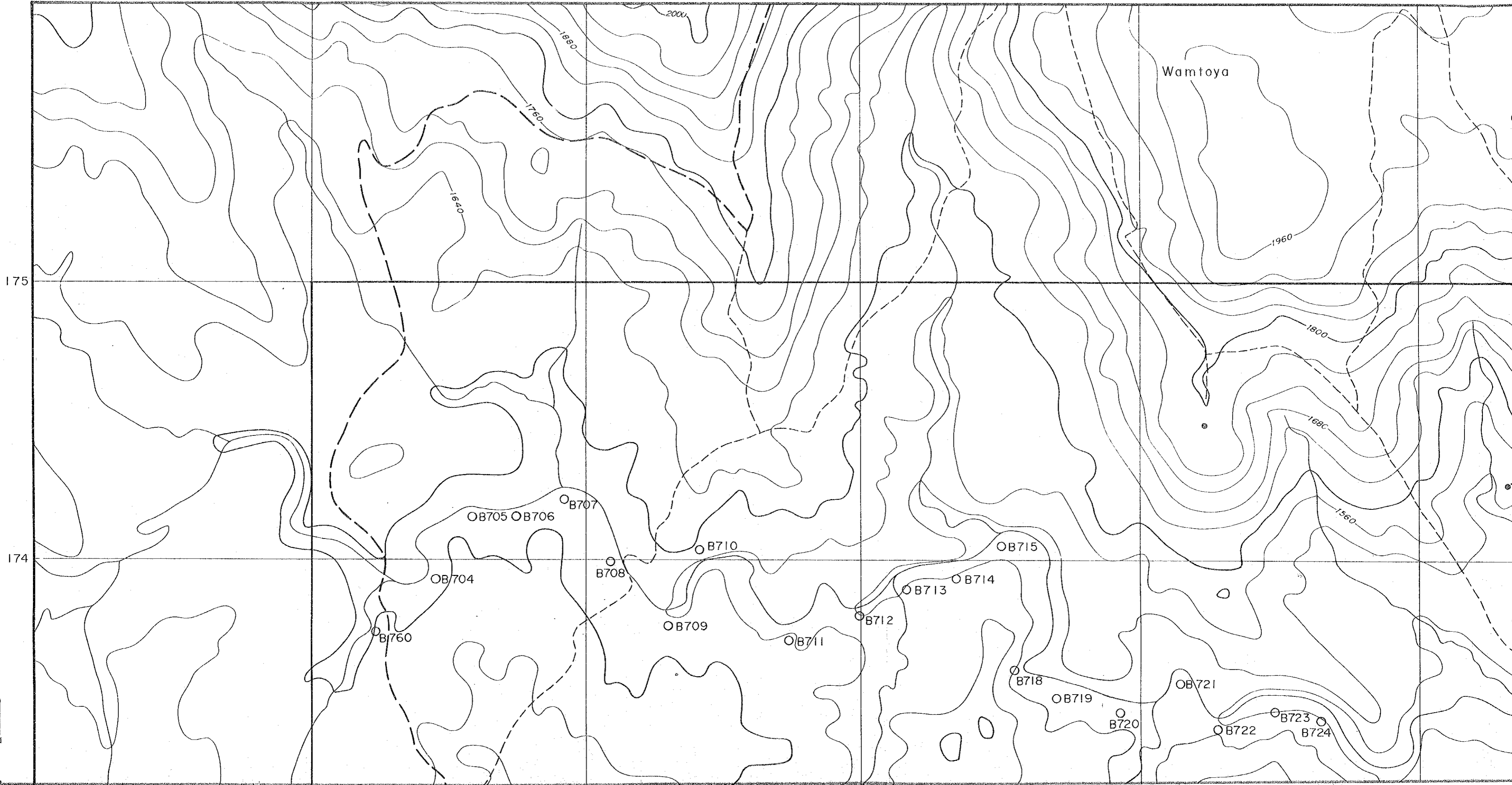


765

770

170

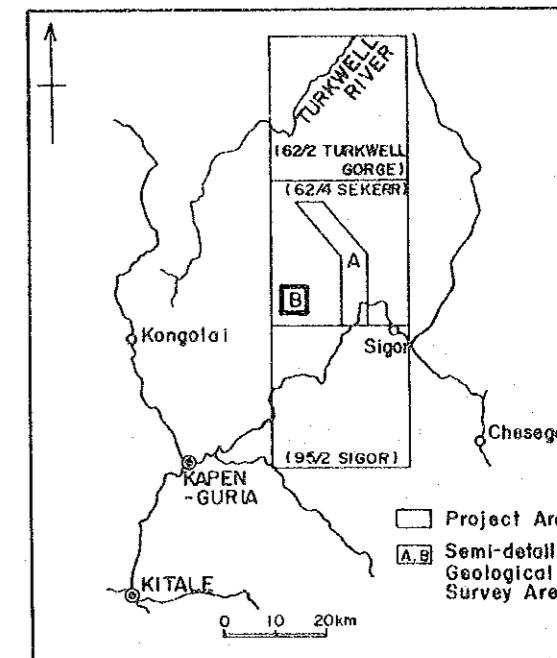
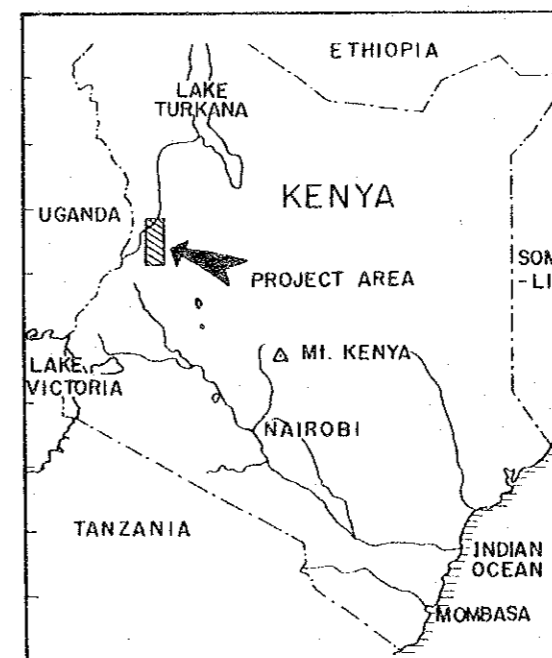
165



MINERAL EXPLORATION
IN
THE KERIO VALLEY DEVELOPMENT AUTHORITY AREA
(PHASE I)

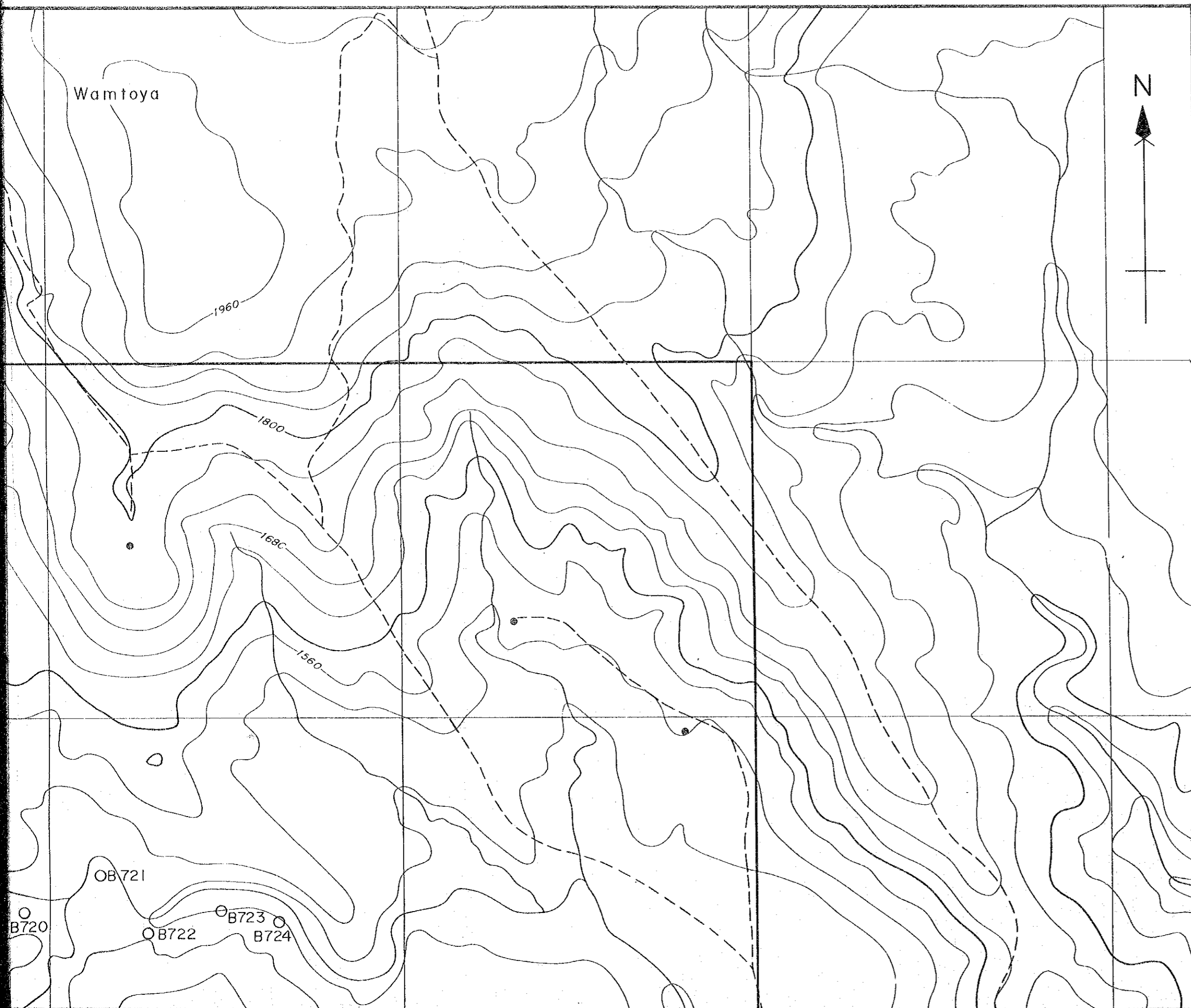
LOCATION MAP OF SOIL
SAMPLES, SEMI-DETAILED
SURVEY AREA B

LOCATION INDEX



JAPAN INTERNATIONAL COOPERATION AGENCY
METAL MINING AGENCY OF JAPAN
March 1984

Scale 1:10,000

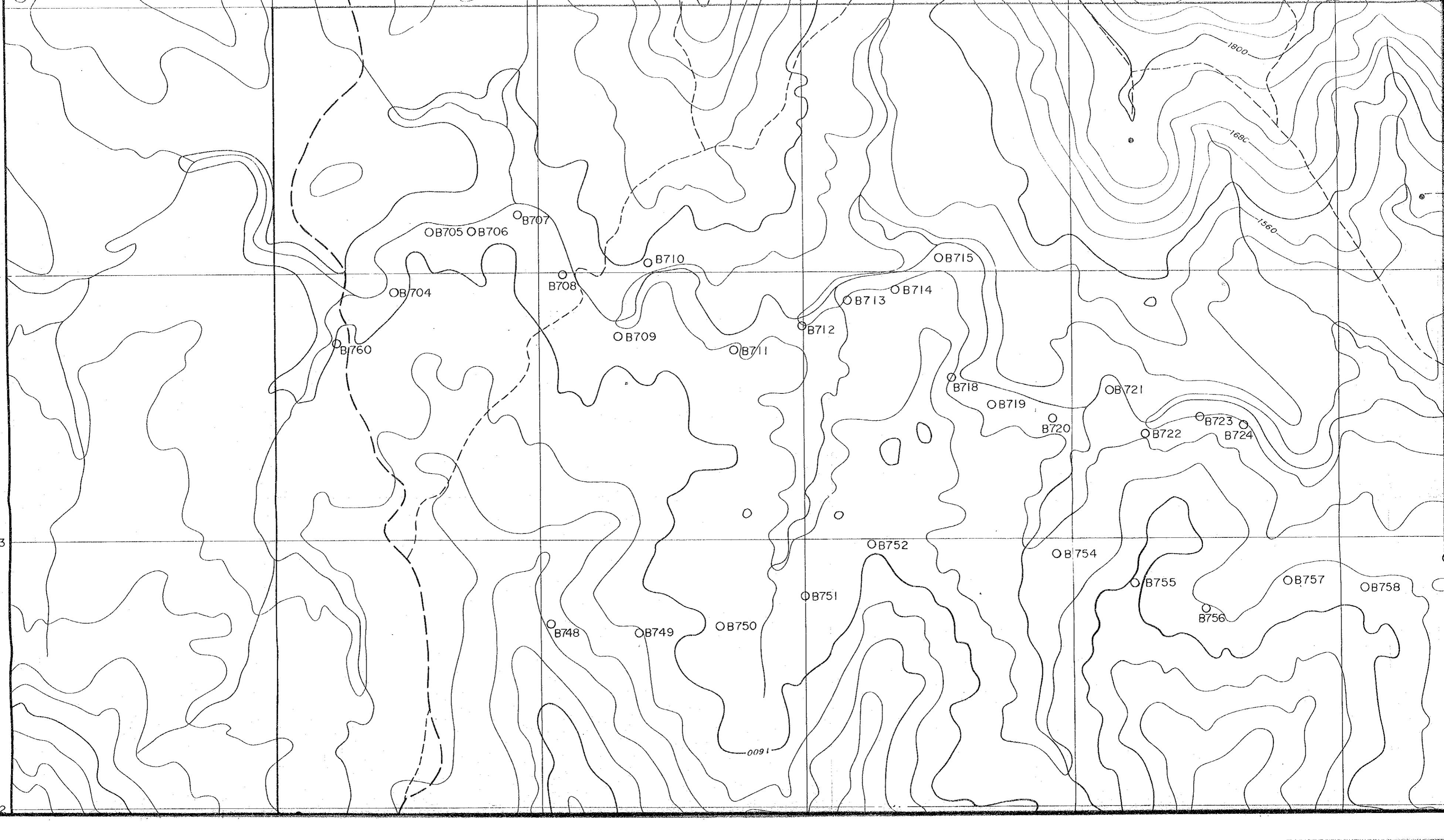


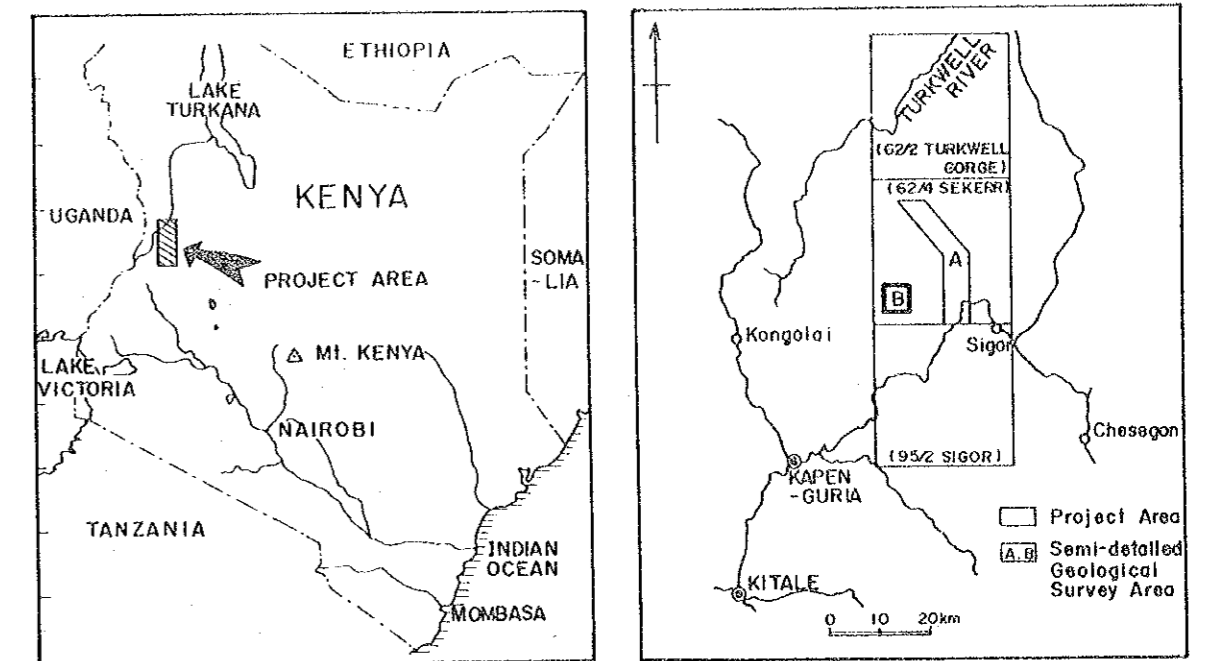
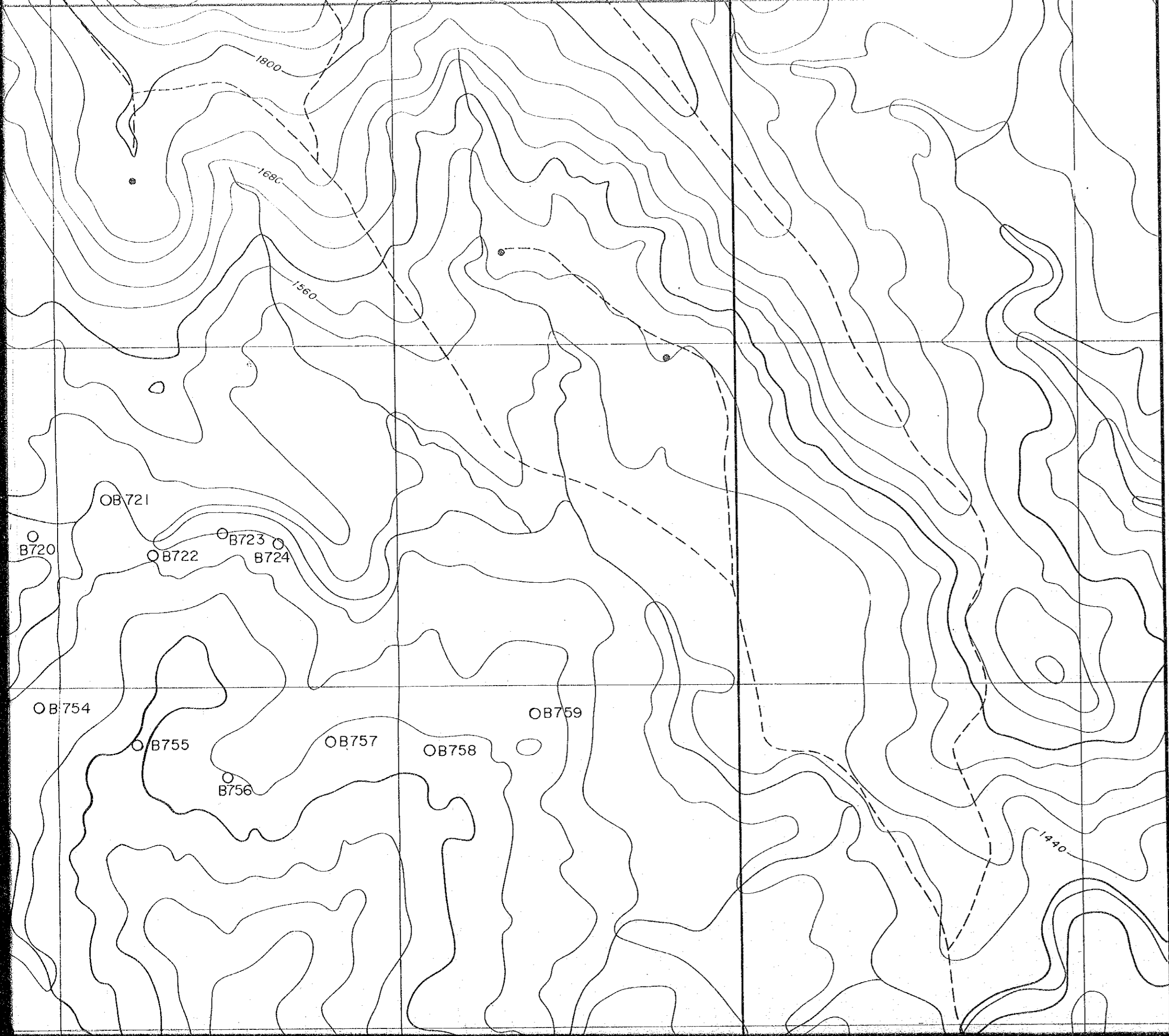
175

174

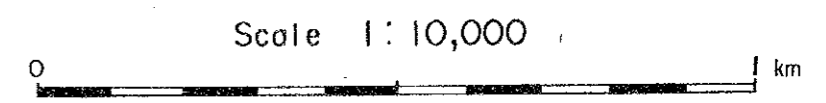
173

172

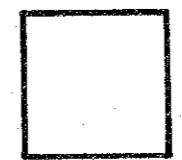




JAPAN INTERNATIONAL COOPERATION AGENCY
 METAL MINING AGENCY OF JAPAN
 March 1984



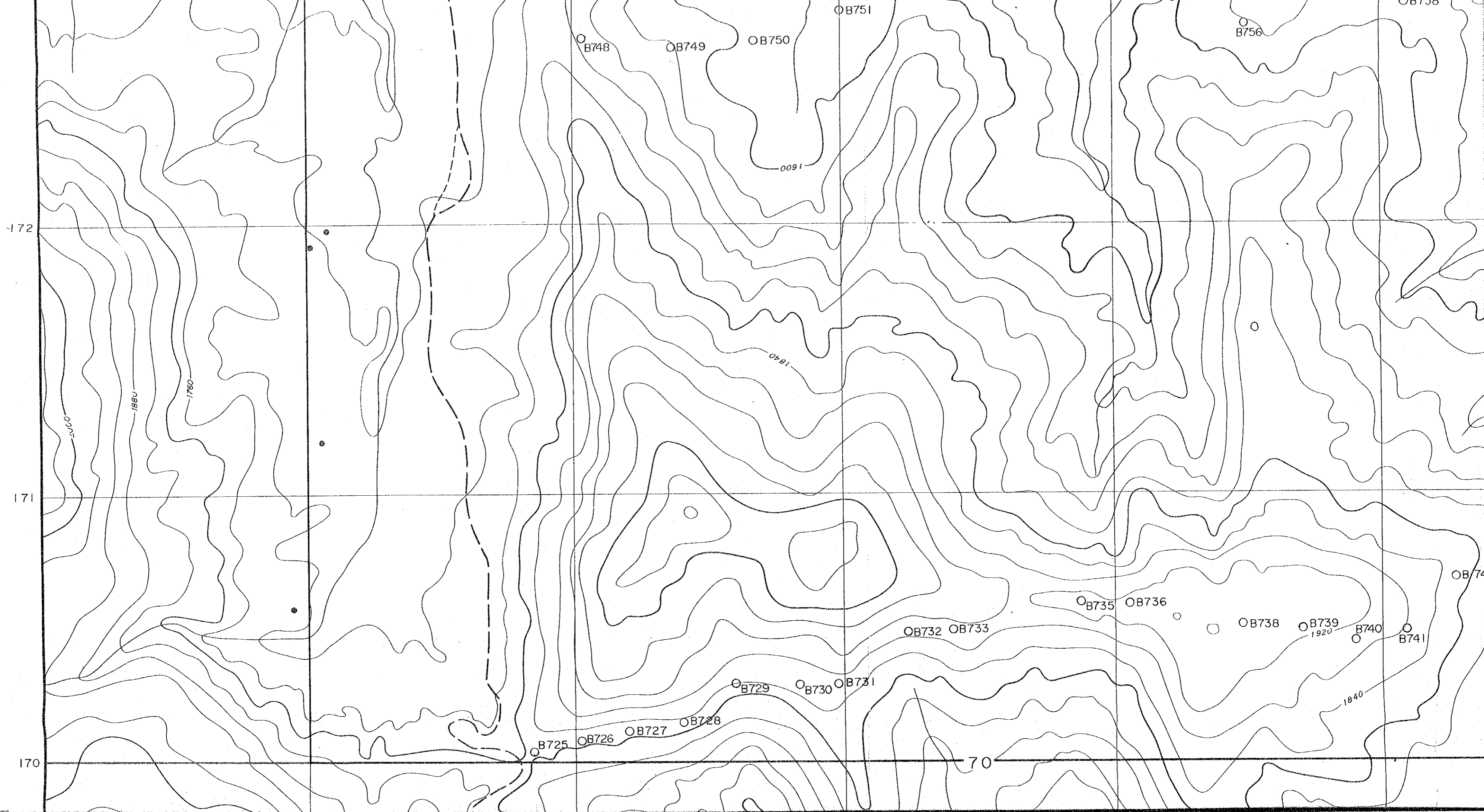
LEGEND

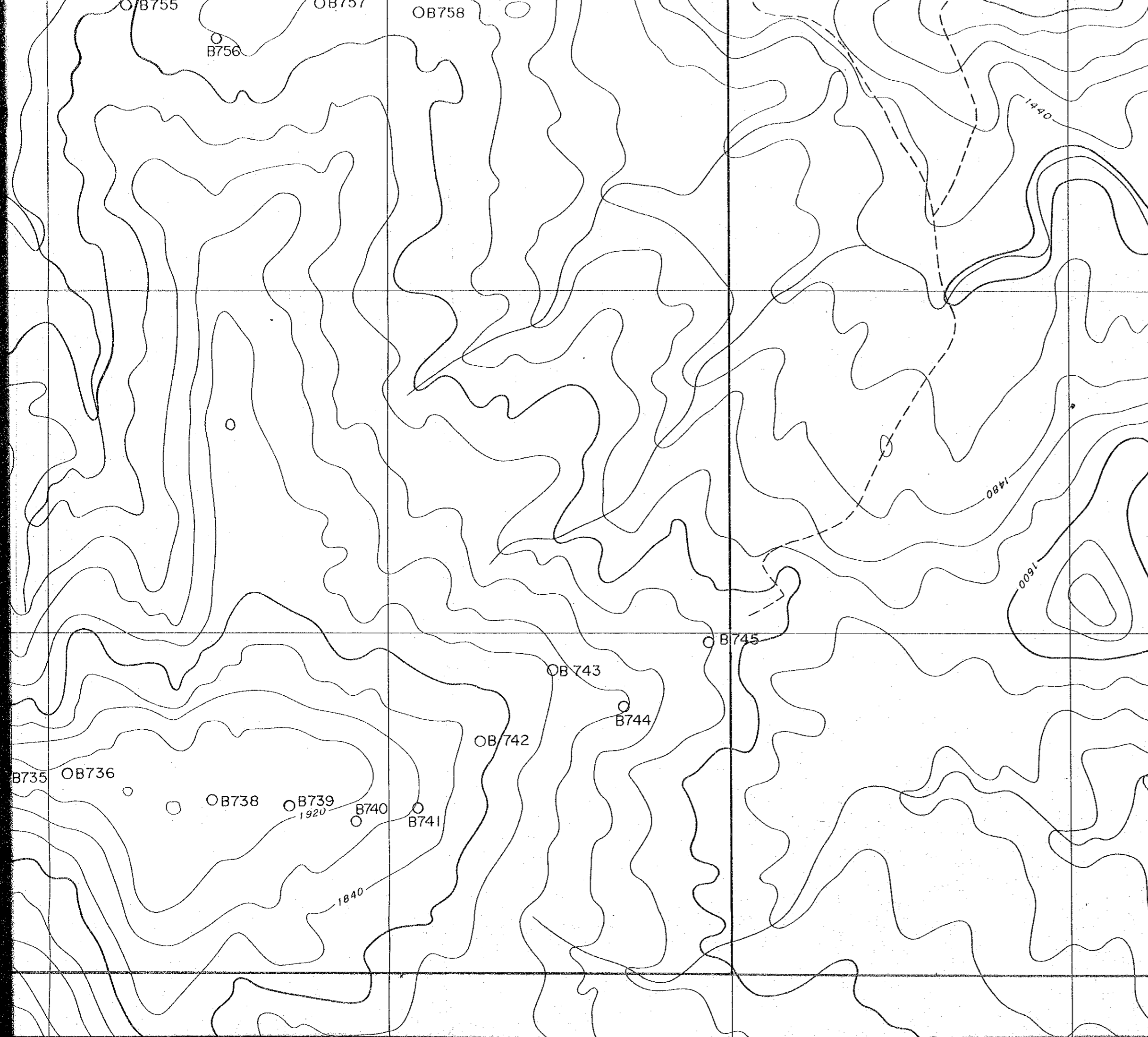


Survey Area

OB723

Sampling site and Sample number

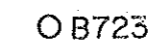




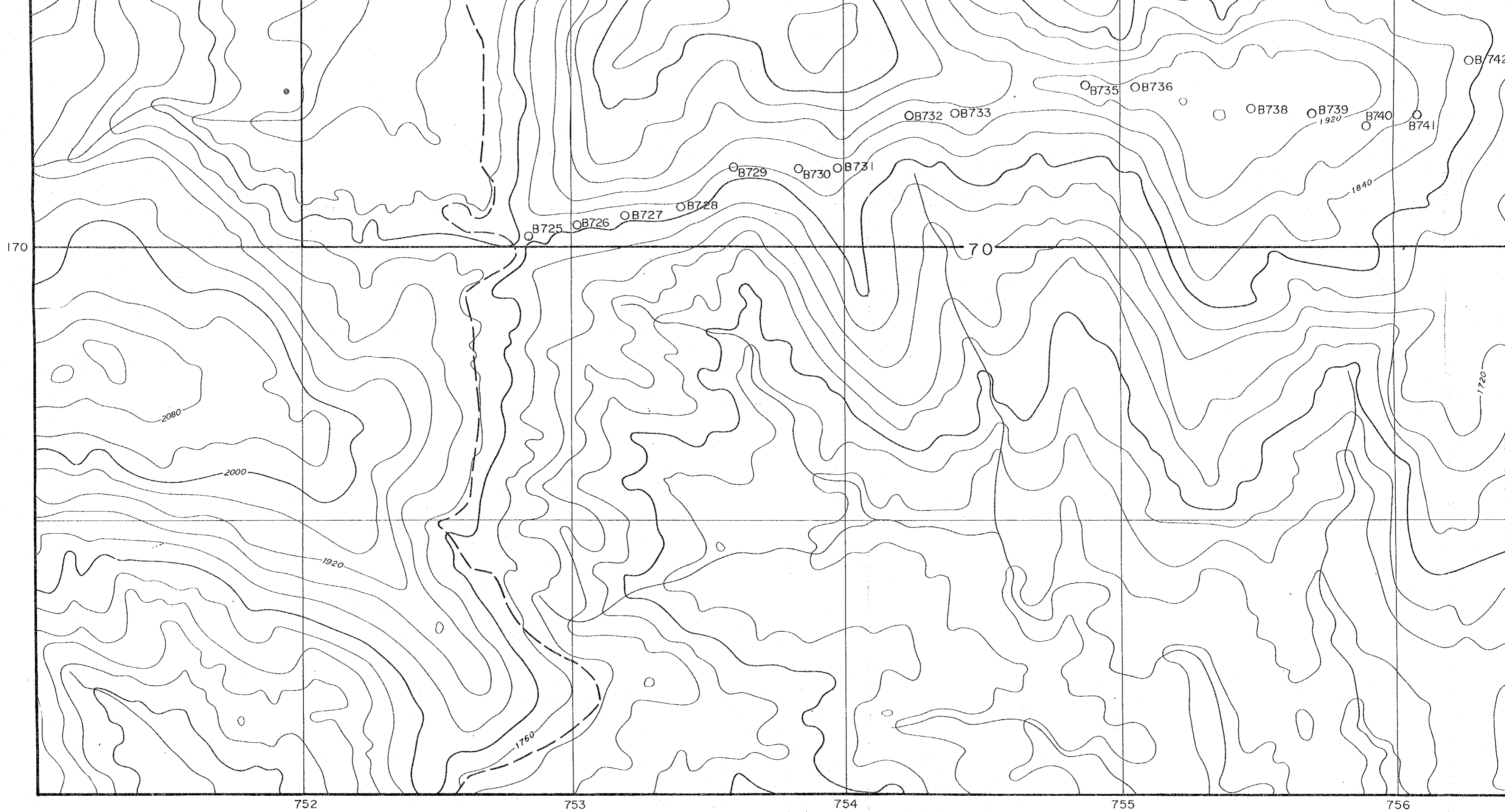
LEGEND



Survey Area



OB723 Sampling site and Sample number



170

70

2080

2000

1920

1760

1840

1720

752

753

754

755

756

OB725

OB726

OB727

OB728

OB729

OB730

OB731

OB732

OB733

OB735

OB736

OB738

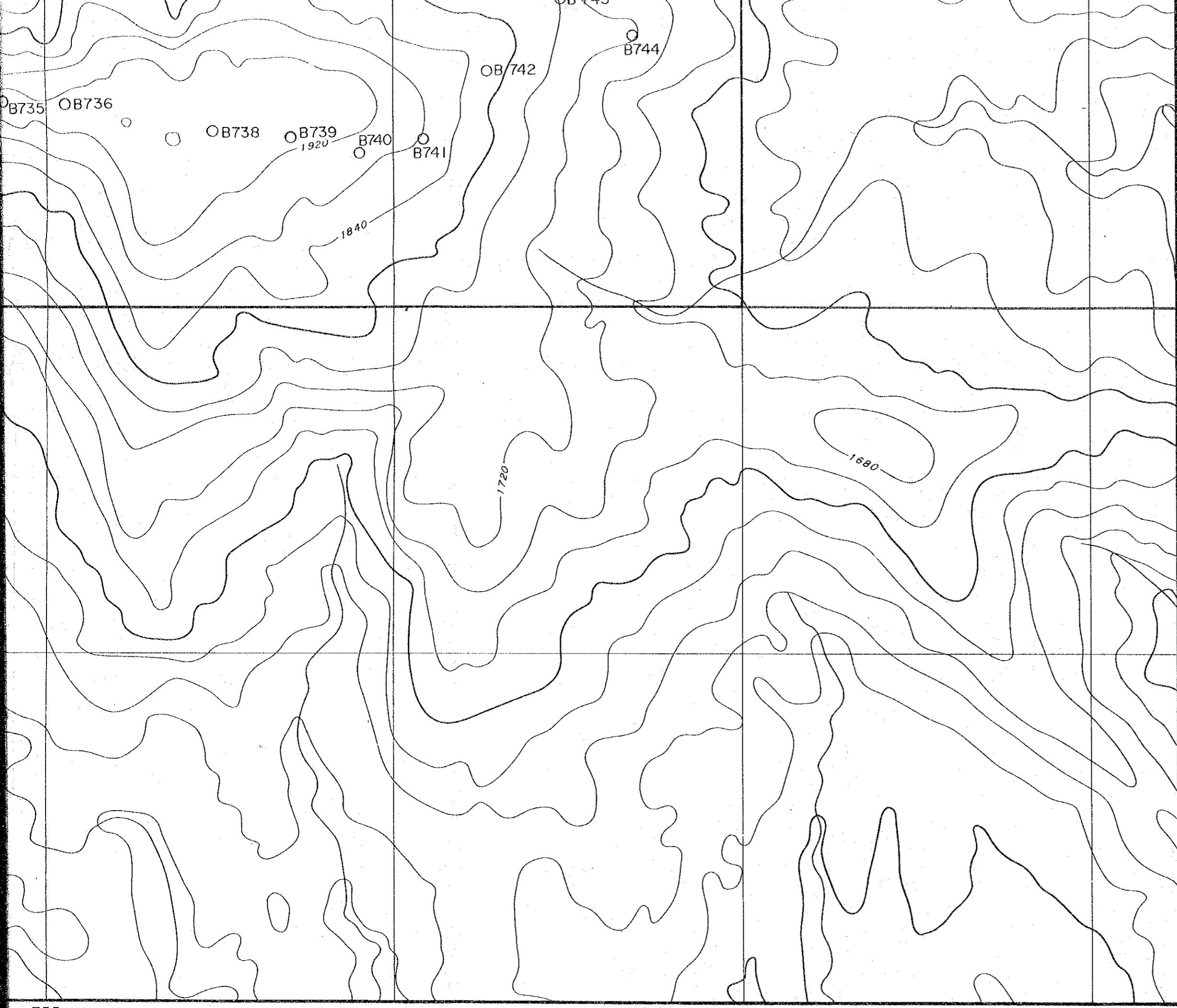
OB739

1920

B740

B741

OB742



755

756

757

OB735

OB736

OB738

OB739
1920

B740

B741

OB742

OB743

B744

1840

1720

1680

ROCK AND
MINERALIZED
SAMPLES

* TAKE ROCK & / OR
MINERALIZED SAMPLE
IF NEEDED

(M)

1

SAMPLES

2

* AFTER, FIELDWORK OF
A DAY;

(1) EXAMINE NOS. OF
SAMPLES

(2) OBSERVE & CORRECT
DESCRIPTION, IF NEEDED

(M)

3

4

* PLOT SAMPLE LOCATION

REVIEW MAP & NOTES

* AFTER, FIELDWORK OF A DAY;
 (1) EXAMINE NOS. OF SAMPLES
 (2) OBSERVE & CORRECT DESCRIPTION, IF NEEDED
 (M)

* FILL-UP "ROCK SAMPLE LIST"
 * MARK ITEMS TO BE TESTED (M)
 * CUT SAMPLE ?

* STORE SAMPLES IN STORAGE

* OBSERVE OCCASIONALLY, WHEN NEEDED (M)

* STORE SAMPLES IN STORAGE

* SELECT TYPES OF TESTS

X-RAY DIF. POLISH, THIN SECTIONS

CHEMICAL ANALYSIS

* SHIP SAMPLES TO GEOSURVEY (L)

* ASSAY (GEOSURVEY)

* CUT SAMPLES BY DIAMOND SAW (H)

* STORE SAWED SAMPLES TEMPORARILY IN STORAGE SHELVES (H)

* SELECT SAMPLES (L, M)

* SELECT WHERE THE TESTS WILL BE DONE (L)
 JPN MGD

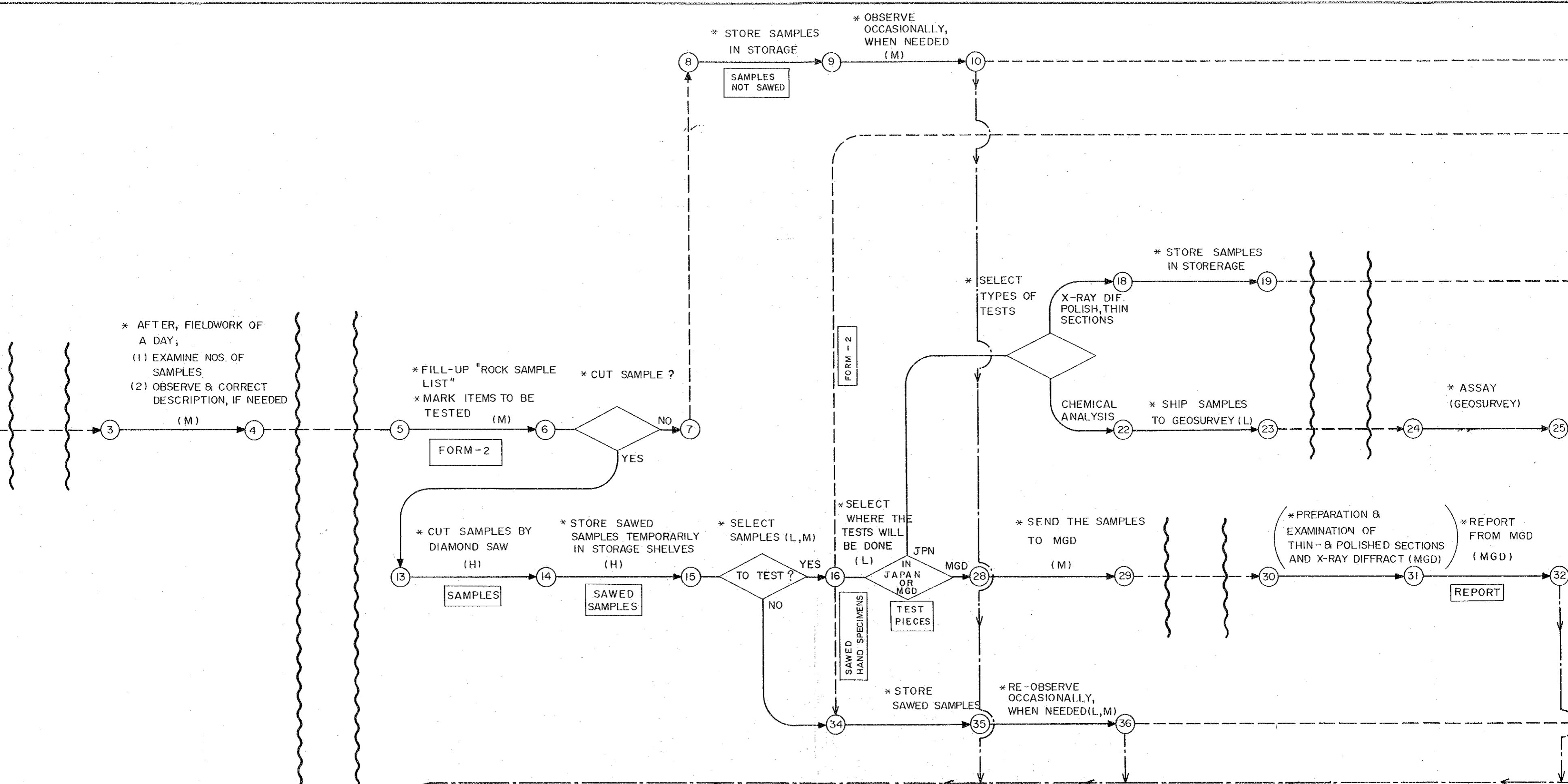
* SEND THE SAMPLES TO MGD (M)

* PREPARATION & EXAMINATION OF THIN- & POLISHED SECTIONS AND X-RAY DIFFRACT (MGD)

* REPORT FROM MGD (MGD)

* REVIEW MAPS & NOTES

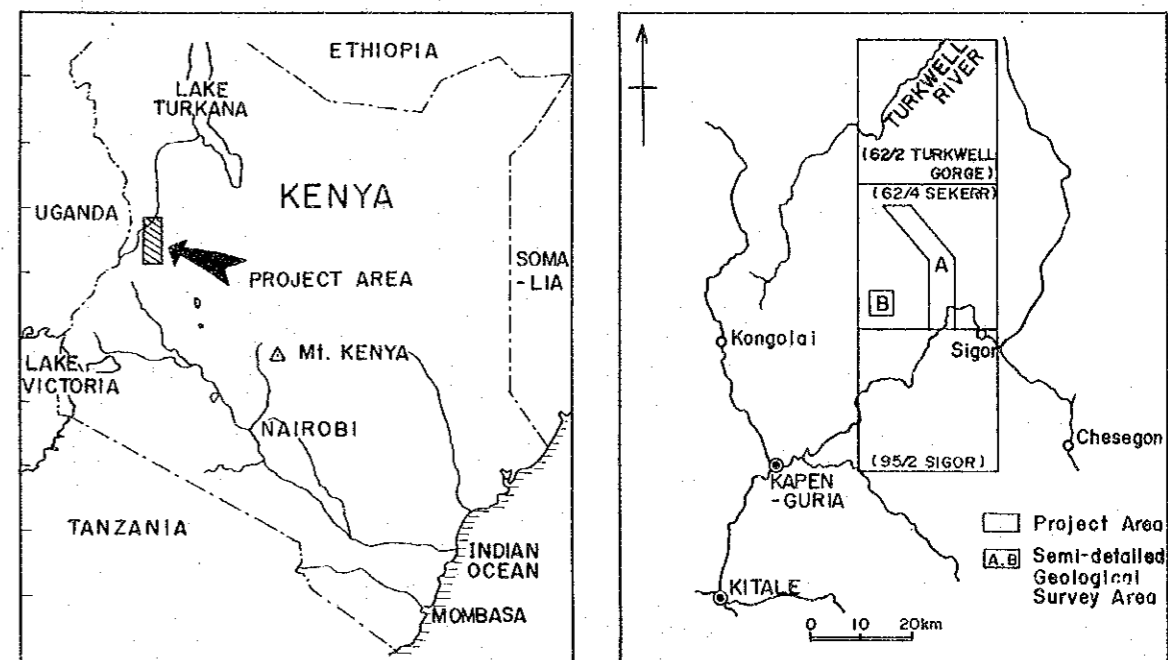
* PLOT GEOLOGY & WRITE



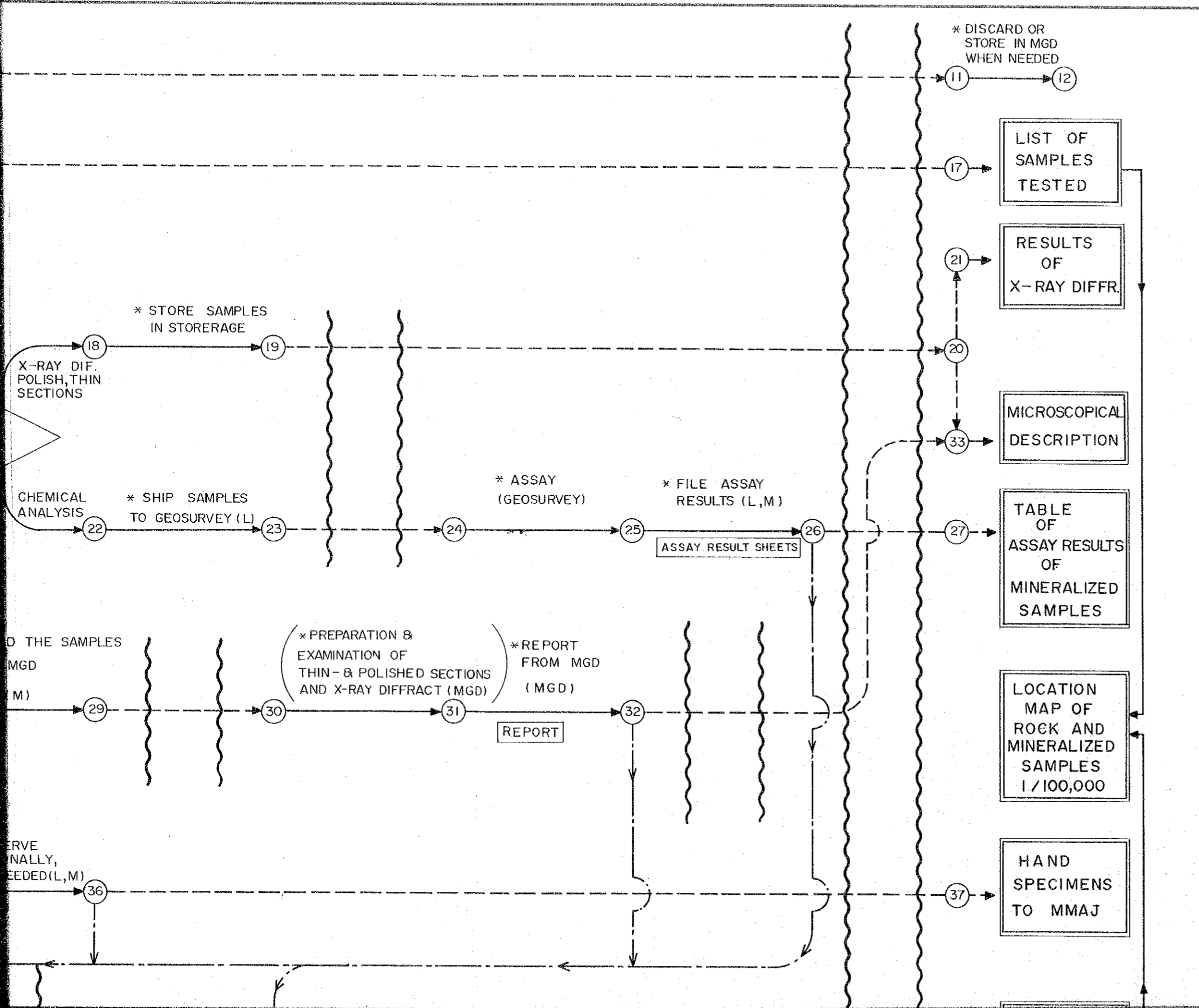
MINERAL EXPLORATION
IN
THE KERIO VALLEY DEVELOPMENT AUTHORITY AREA
(PHASE I)

FLOW CHART OF
JOB IN KENYA

LOCATION INDEX



JAPAN INTERNATIONAL COOPERATION AGENCY
METAL MINING AGENCY OF JAPAN
March 1984



ROCK AND
MINERALIZED
SAMPLES

GEOLOGICAL
DATA

AIR PHOTOS

