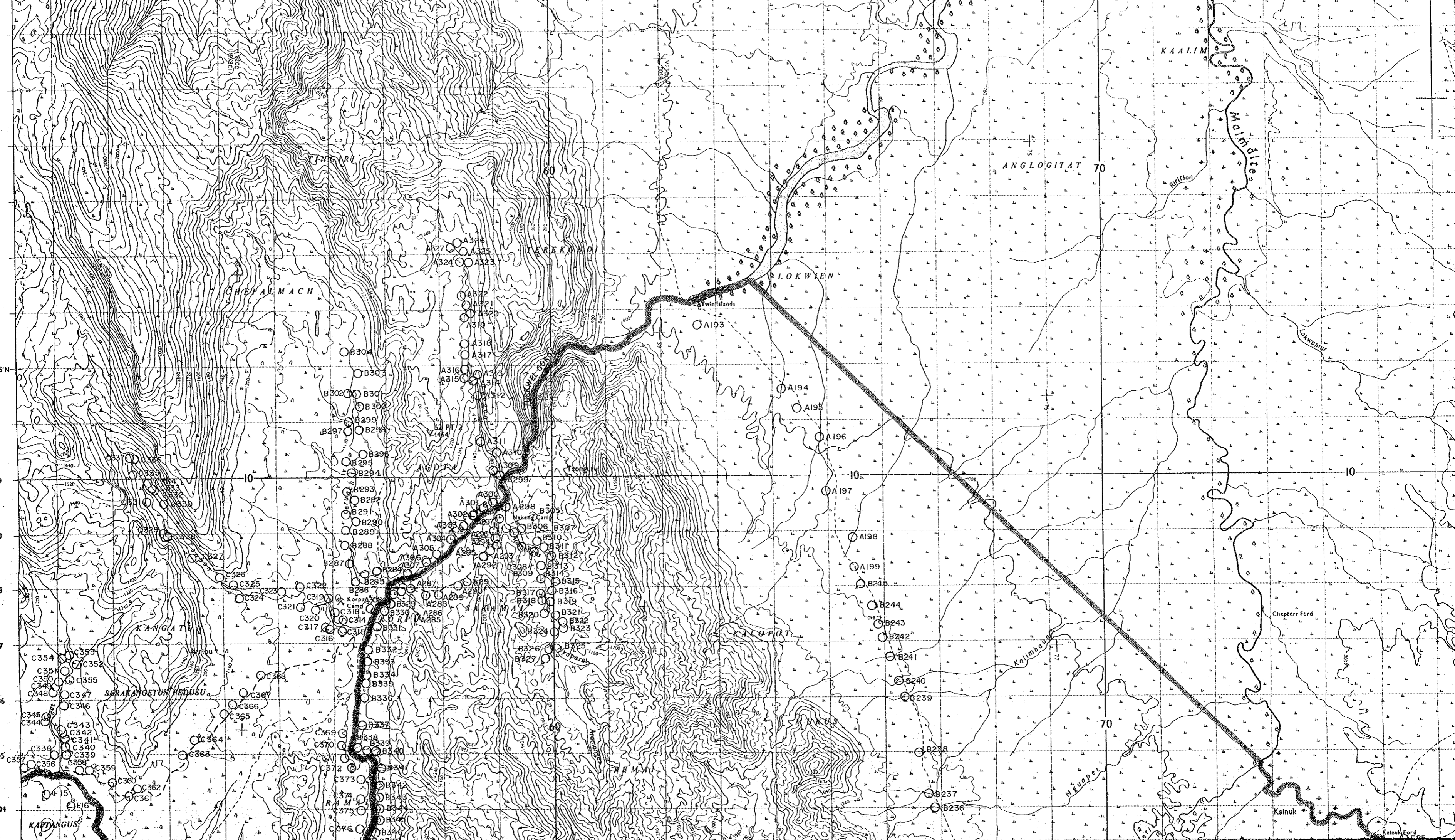
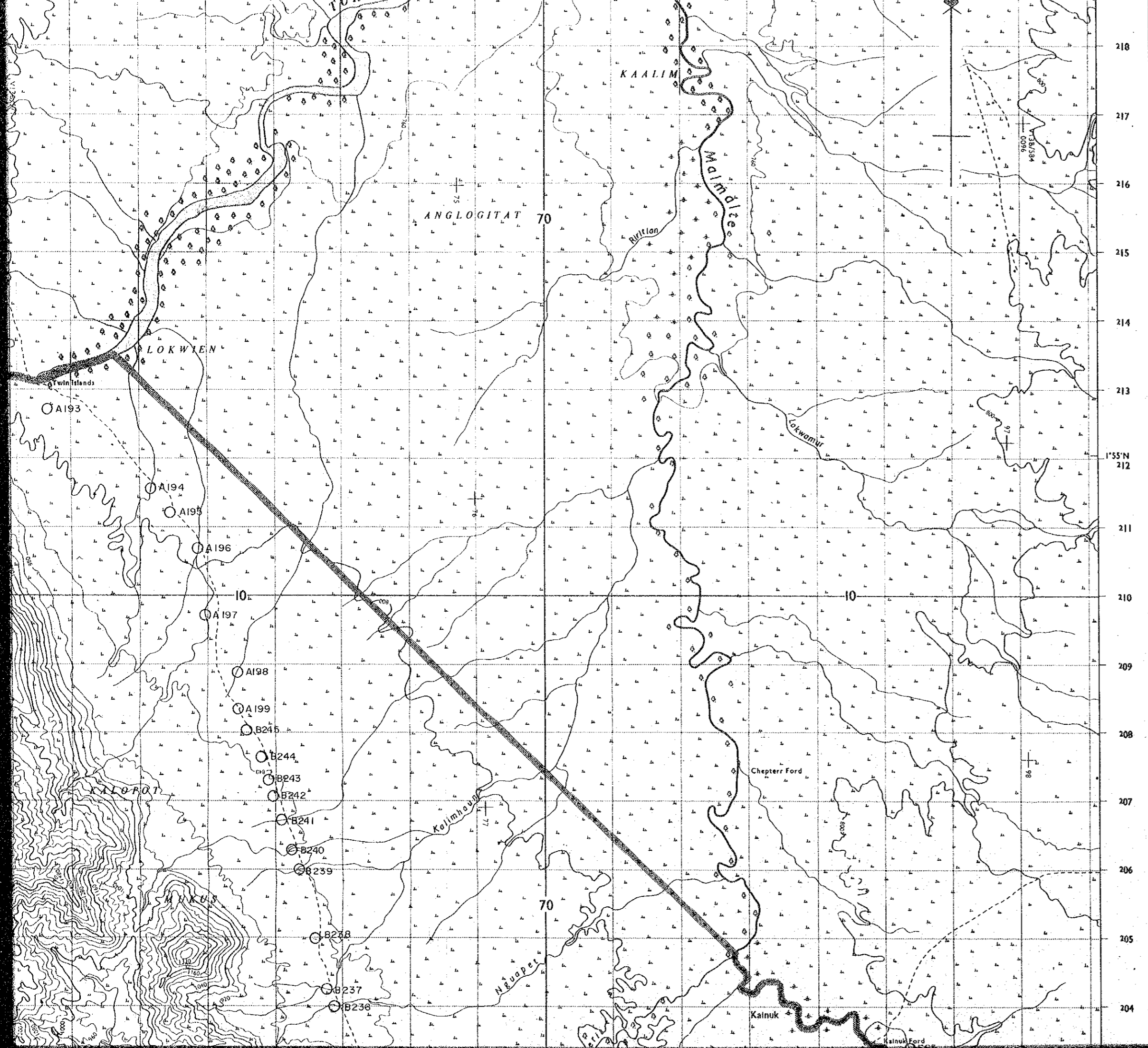


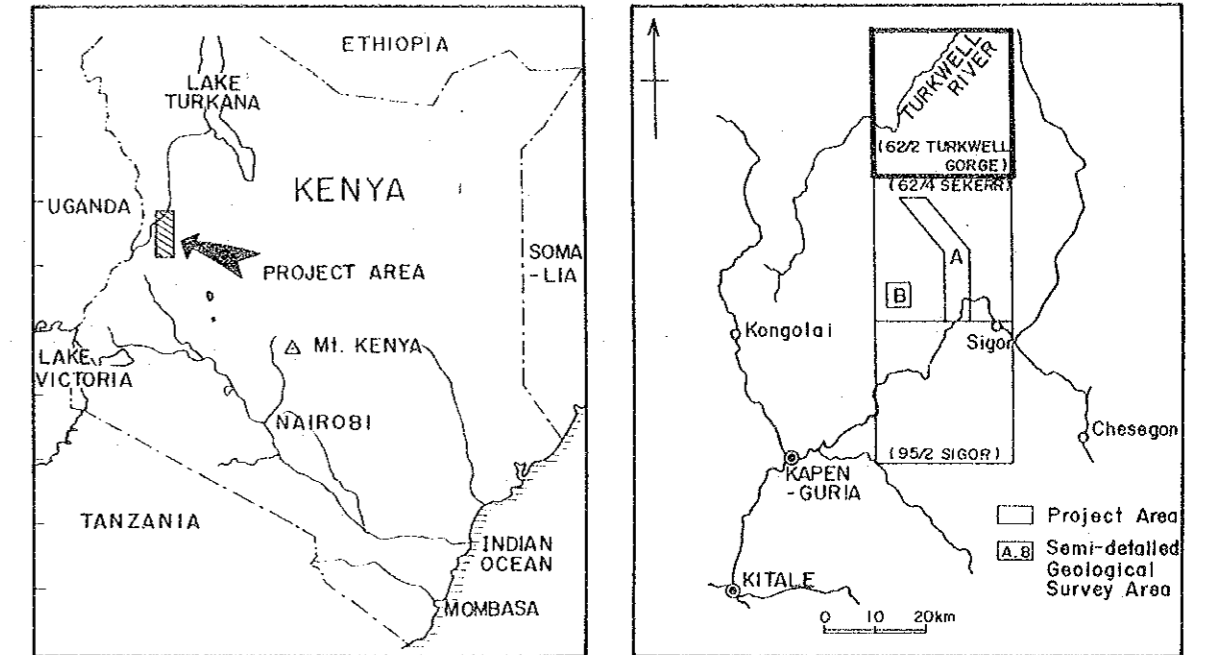
218
217
216
215
214
213
212
211
210
209
208
207
206
205
204



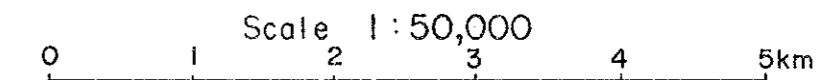
SEDIMENTS SAMPLES, REGIONAL SURVEY AREA (TURKWEL GORGE)



LOCATION INDEX

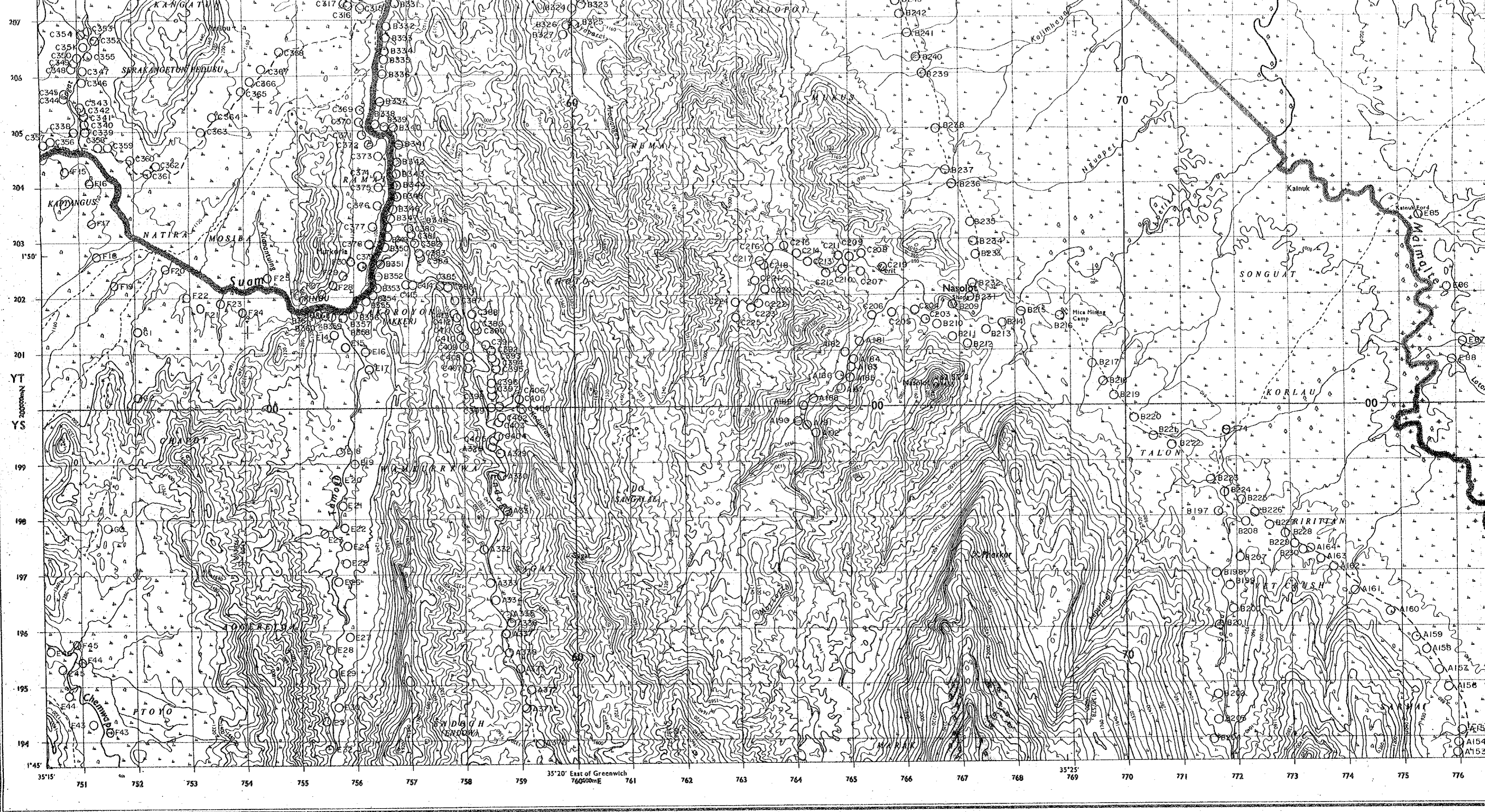


JAPAN INTERNATIONAL COOPERATION AGENCY
METAL MINING AGENCY OF JAPAN
March 1984



LEGEND

○ B236 Sampling site and Sample number



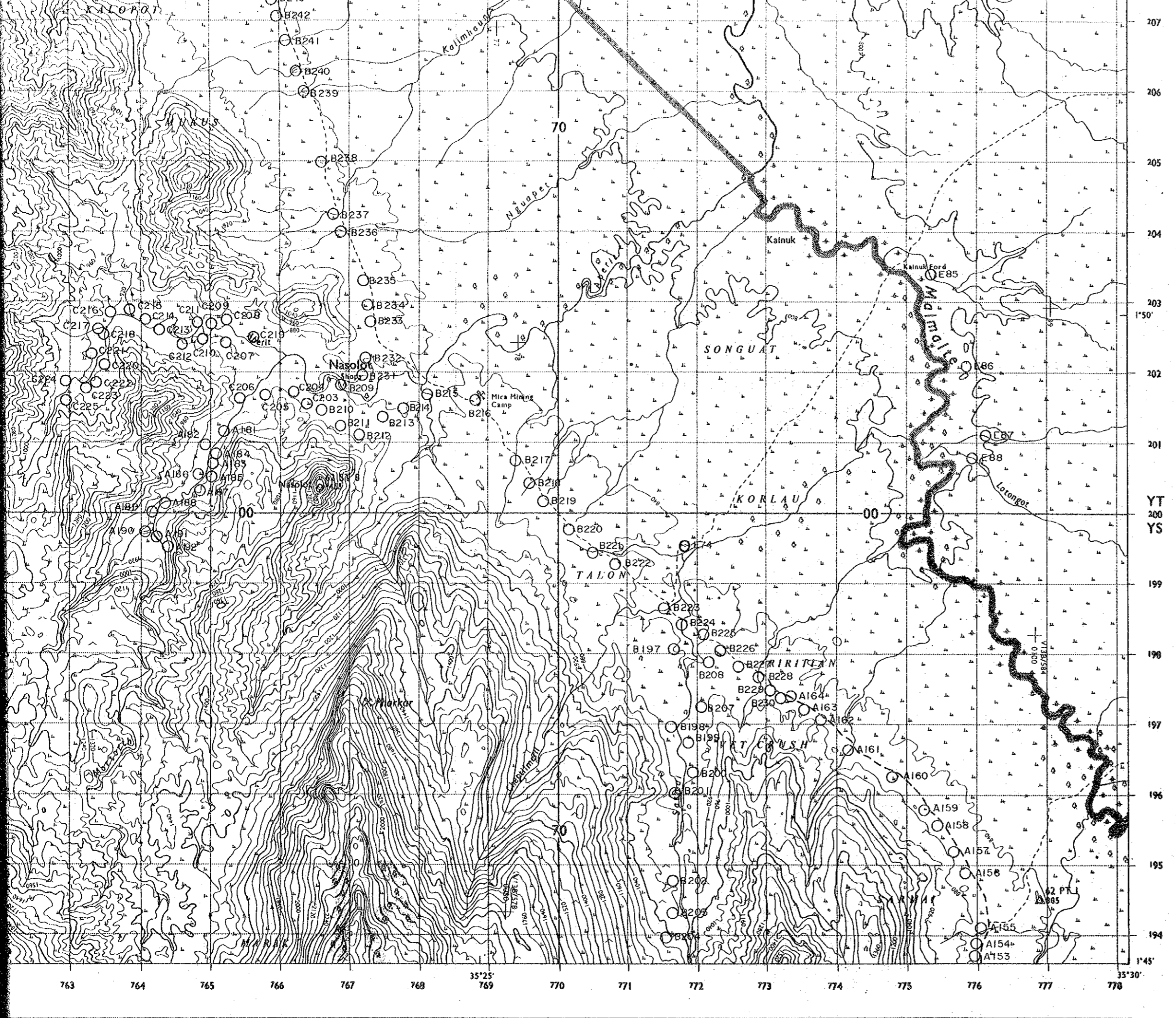
207
206
205
204
203
1'50"
202
201
YT
200
YS
199
198
197
196
195
194
1'45"

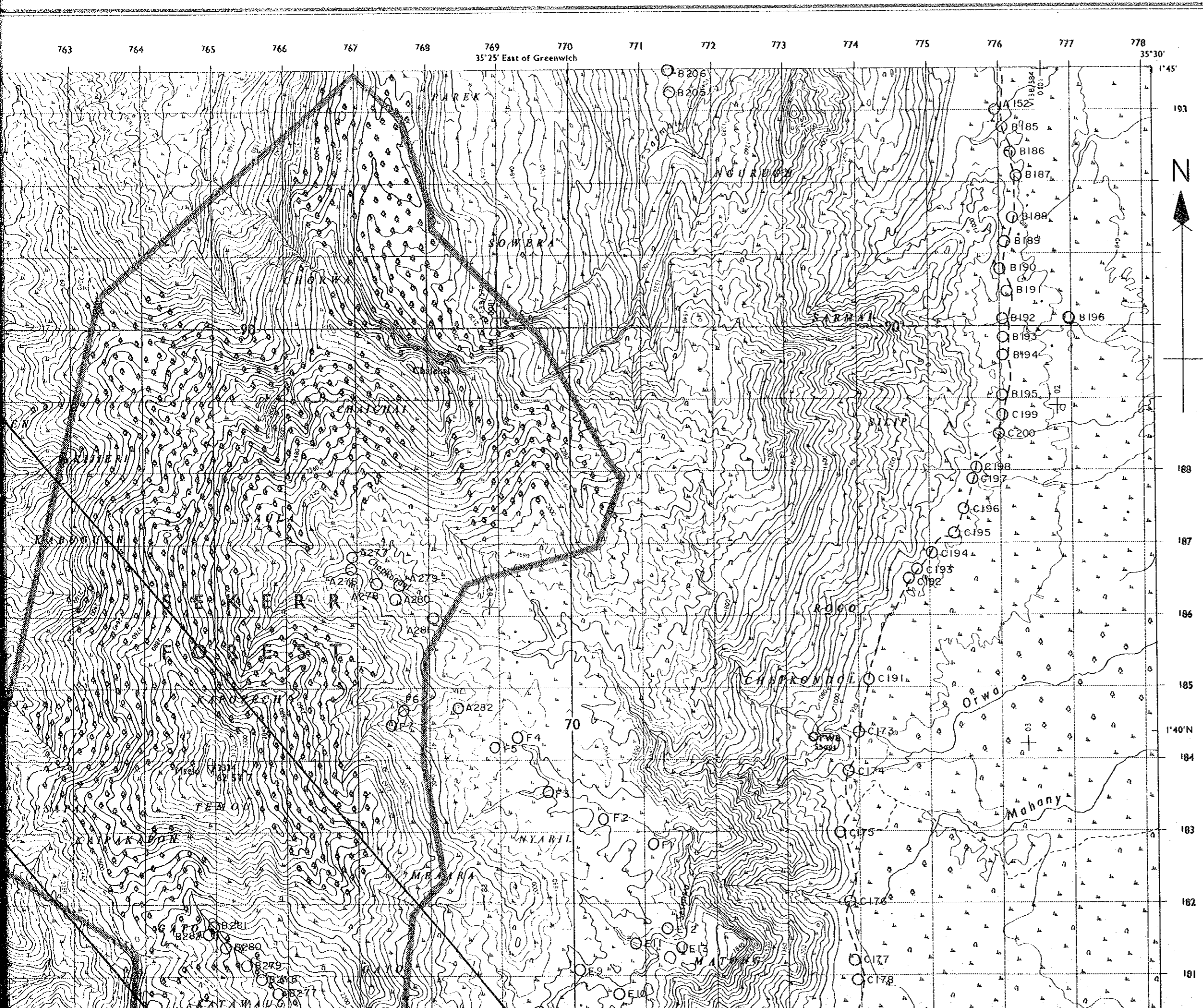
35°15' 751 752 753 754 755 756 757 758 759 35°20' East of Greenwich 760 761 762 763 764 765 766 767 768 35°25' 769 770 771 772 773 774 775 776

LEGEND

○ B236

Sampling site and Sample number

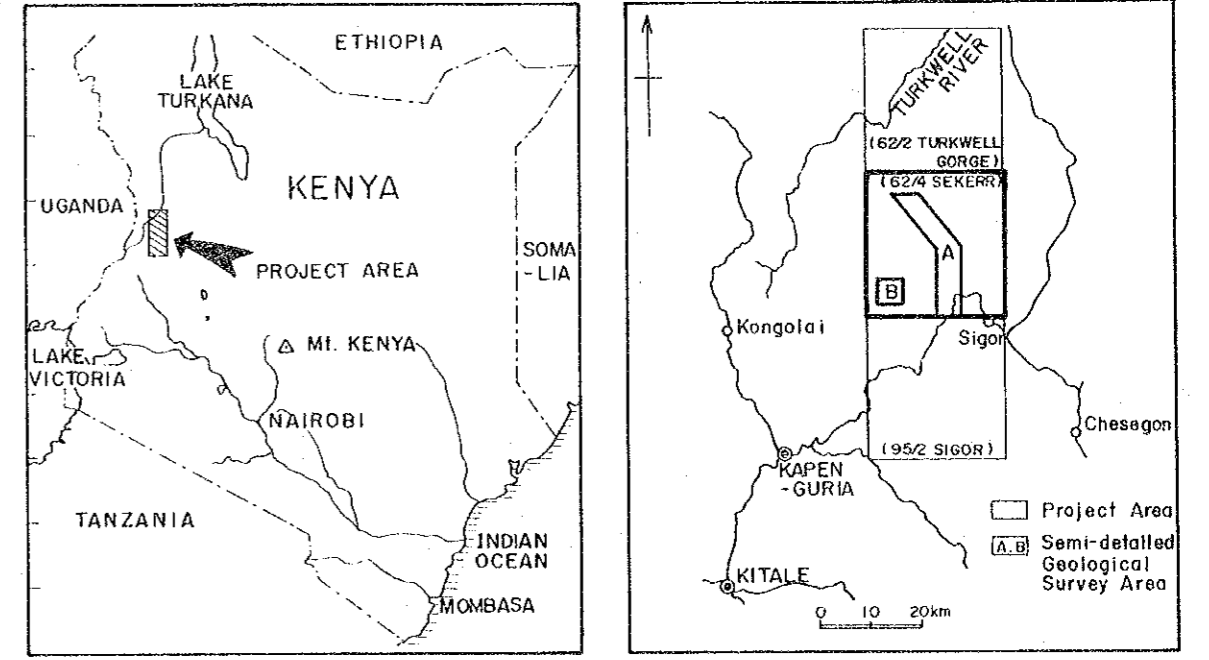




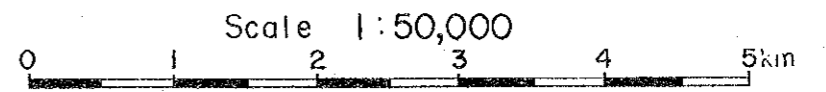
MINERAL EXPLORATION
IN
THE KERIO VALLEY DEVELOPMENT AUTHORITY AREA
(PHASE I)

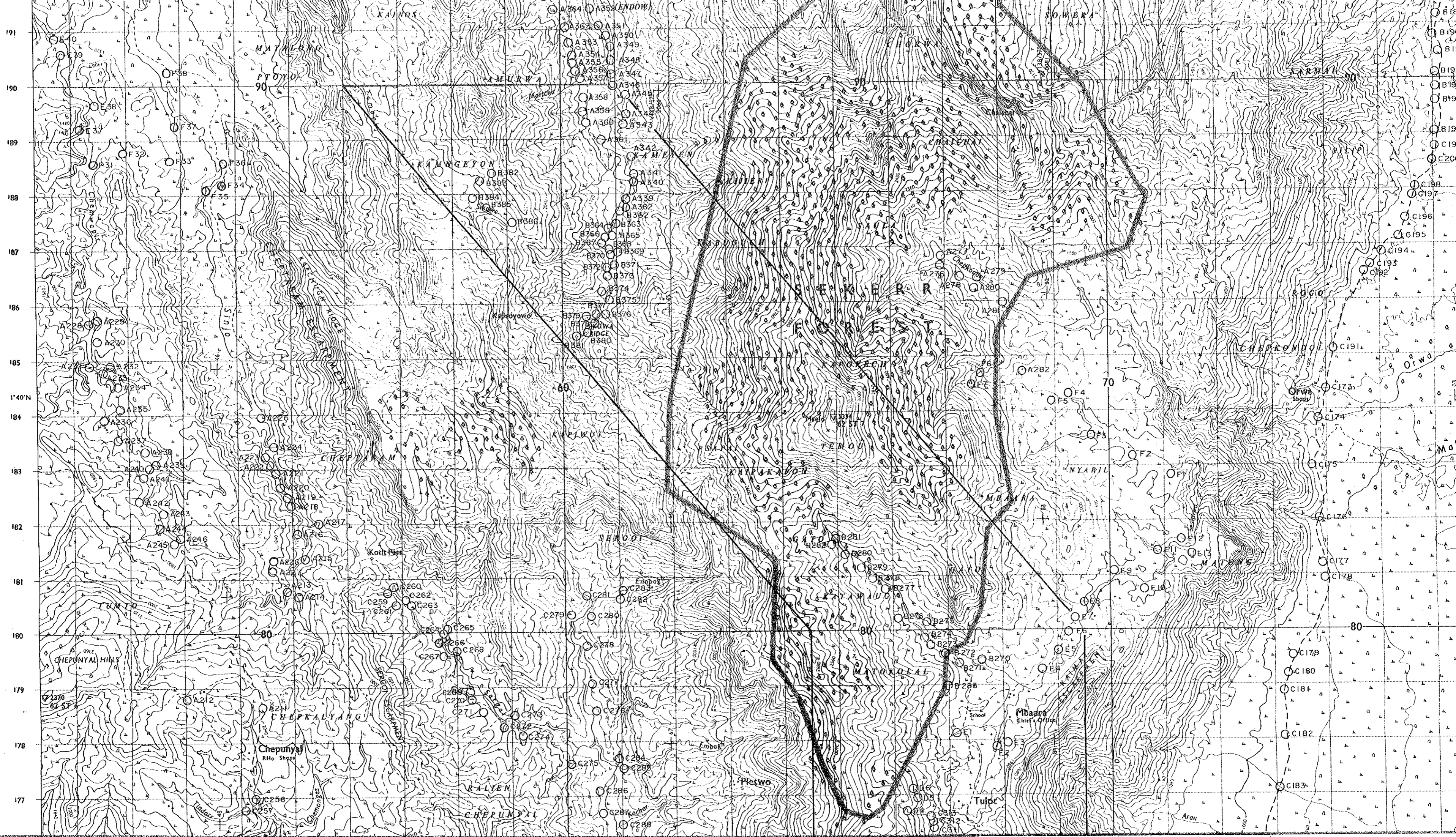
LOCATION MAP OF STREAM
SEDIMENTS SAMPLES, REGIONAL
SURVEY AREA (SEKERR)

LOCATION INDEX

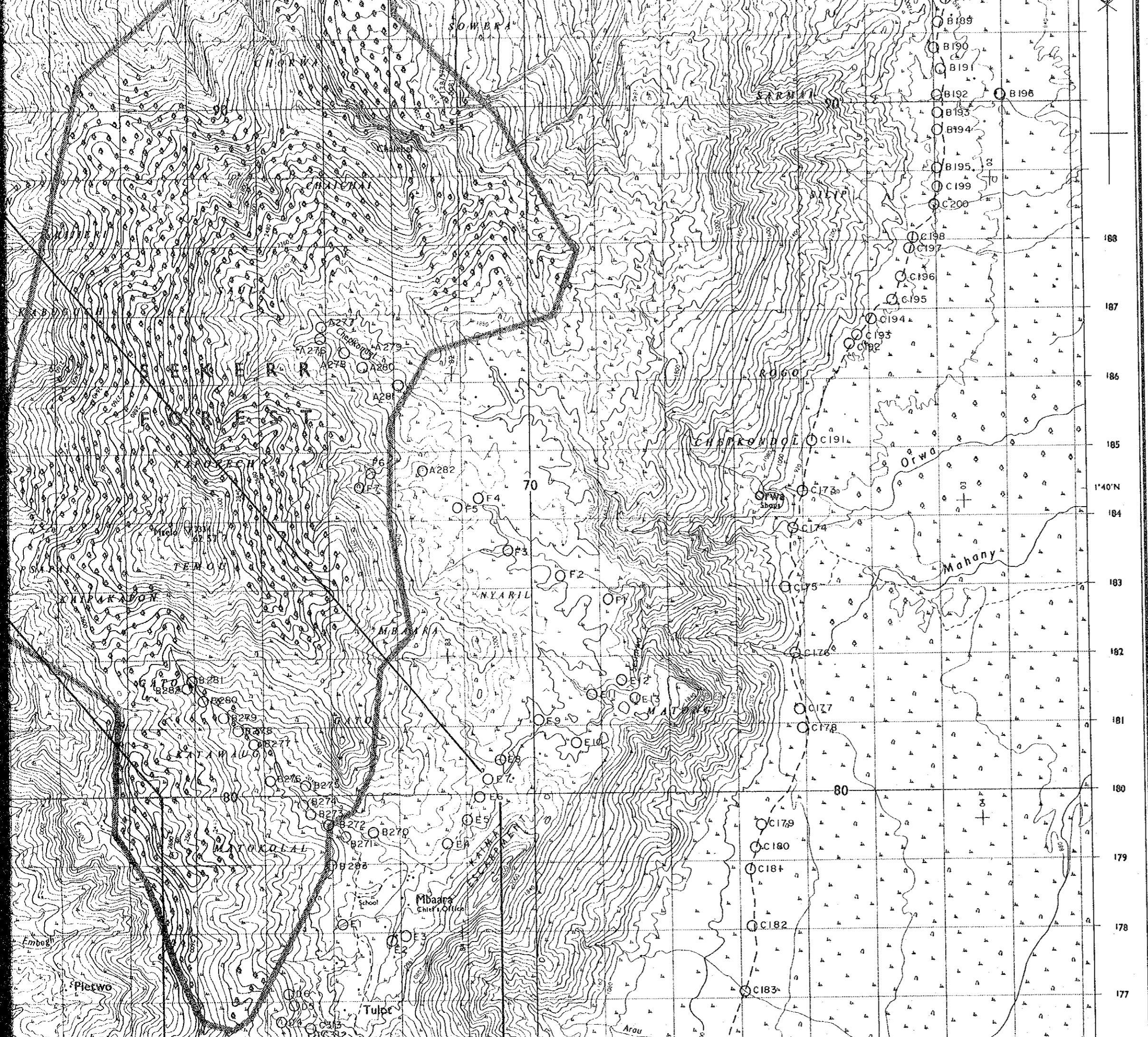


JAPAN INTERNATIONAL COOPERATION AGENCY
METAL MINING AGENCY OF JAPAN
March 1984

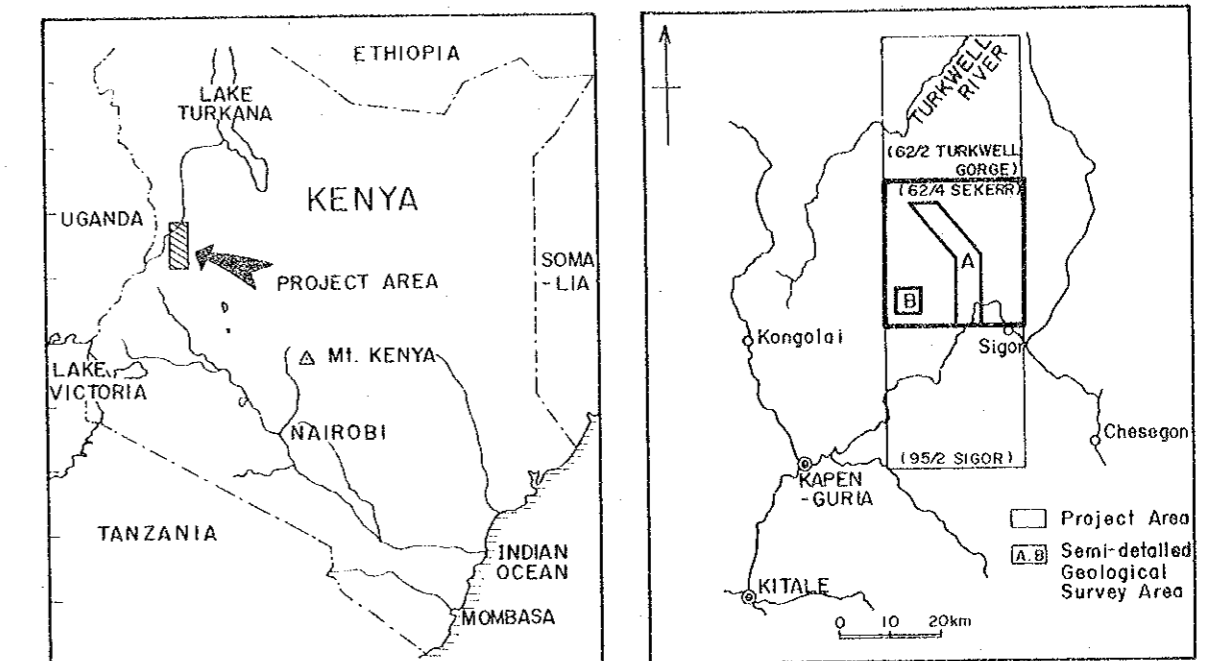




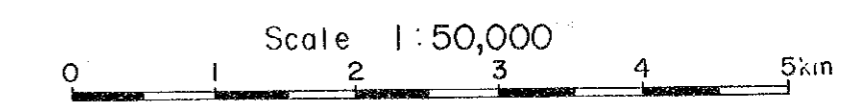
LOCATION MAP OF STREAM SEDIMENTS SAMPLES, REGIONAL SURVEY AREA (SEKERR)



LOCATION INDEX

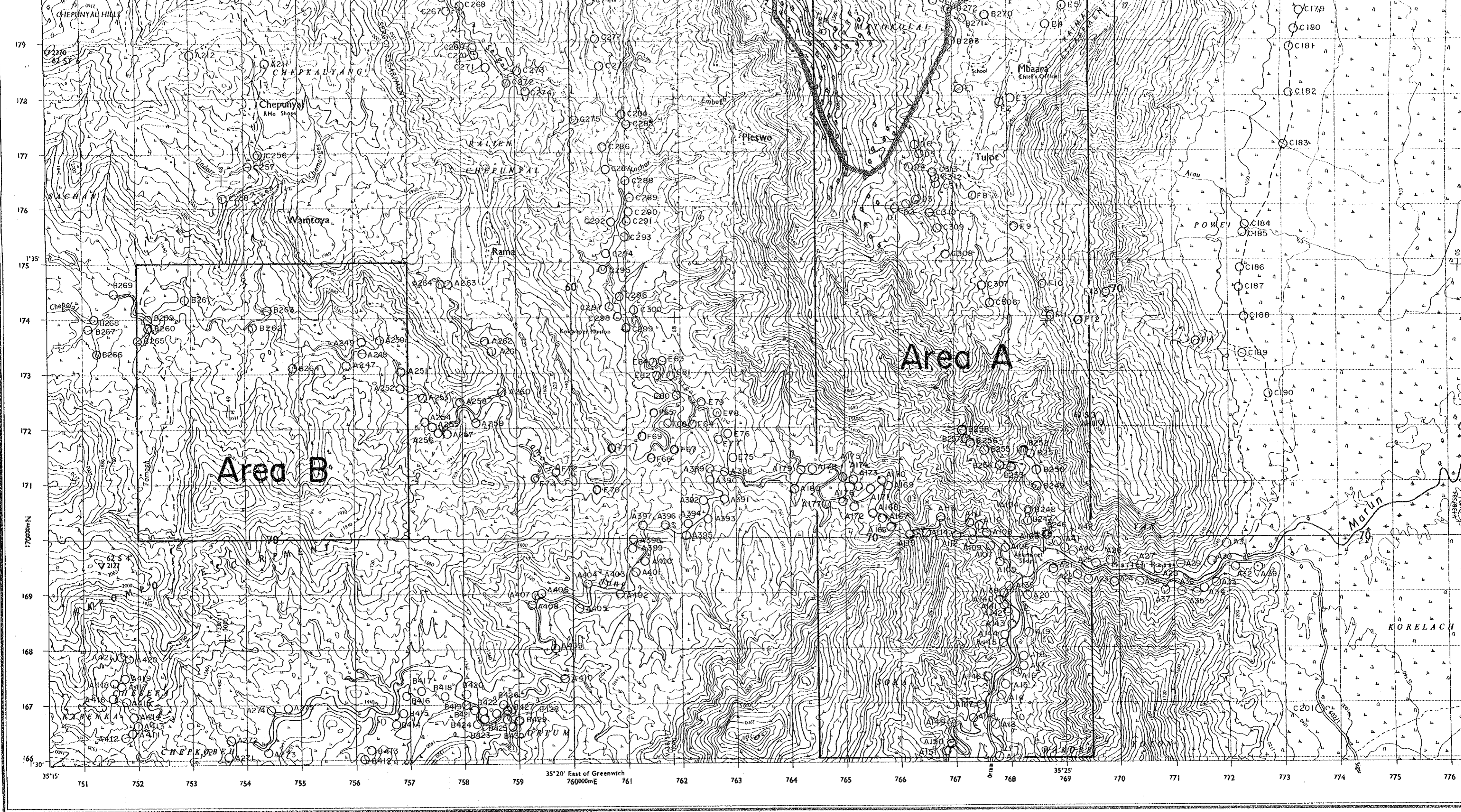


JAPAN INTERNATIONAL COOPERATION AGENCY
METAL MINING AGENCY OF JAPAN
March 1984



LEGEND

○ B272 Sampling site and Sample number



Area B

Area A

Chepunya

Rama

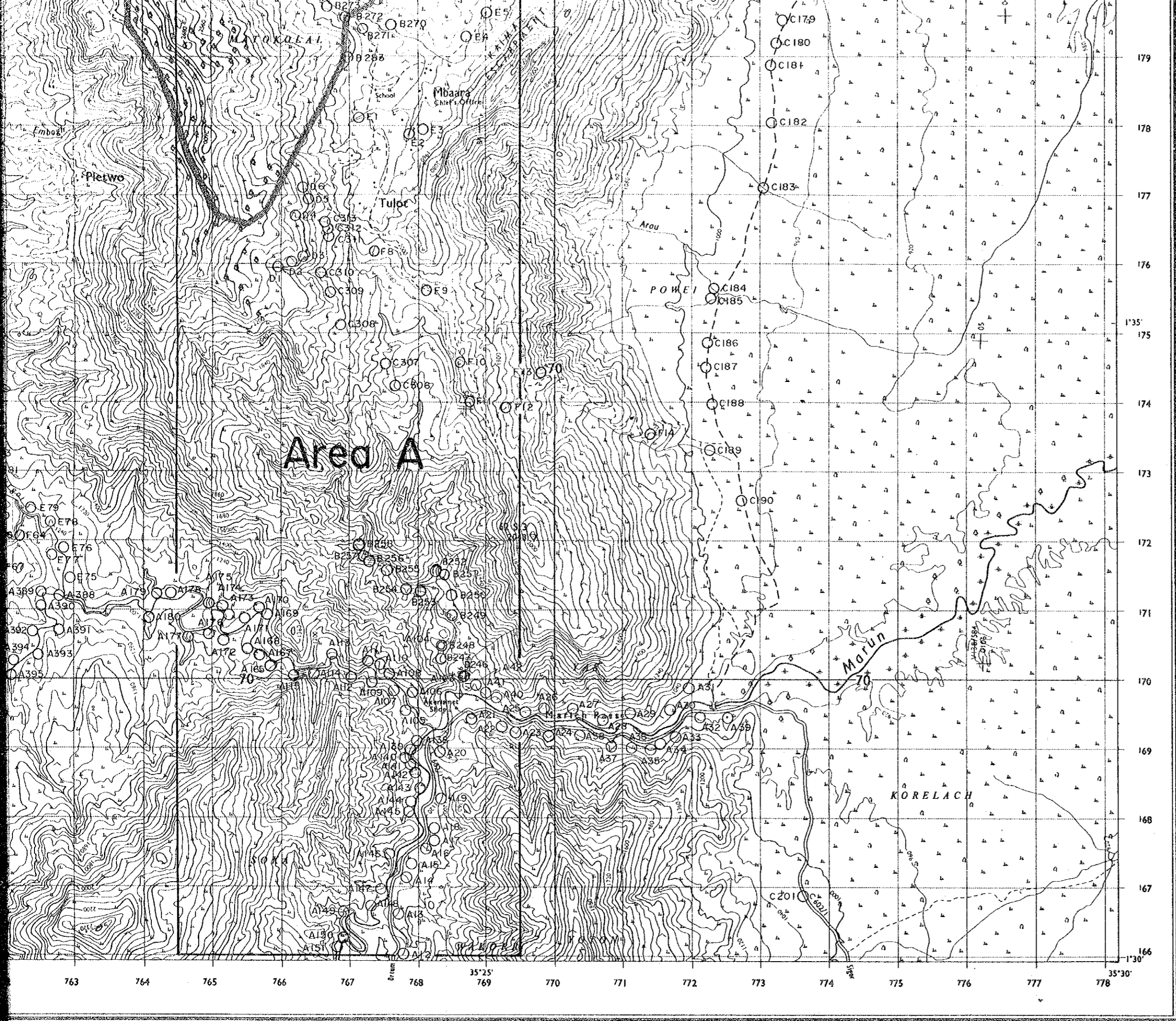
Mbaara

Marun

KORELACH

179
178
177
176
175
174
173
172
171
170000m N
169
168
167
166

35°15' 751 752 753 754 755 756 757 758 759 35°20' East of Greenwich 760000m E 761 762 763 764 765 766 767 768 35°25' 769 770 771 772 773 774 775 776



LEGEND

○ B272 Sampling site and Sample number