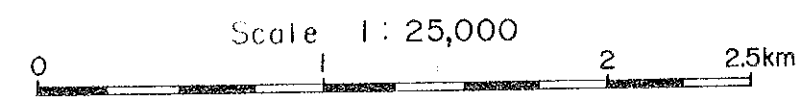


Regional maps showing the project area's location in East Africa. The left map shows the area around Lake Victoria, with labels for UGANDA, TANZANIA, and SOMALIA. The right map shows a more detailed view of the project area, including locations like KONGOLA, SIGOI, CHASOGON, KAPEN-GURIA, and KITALE. A legend indicates the Project Area and Semi-detailed Geological Survey Area.

JAPAN INTERNATIONAL COOPERATION AGENCY  
METAL MINING AGENCY OF JAPAN  
March, 1984

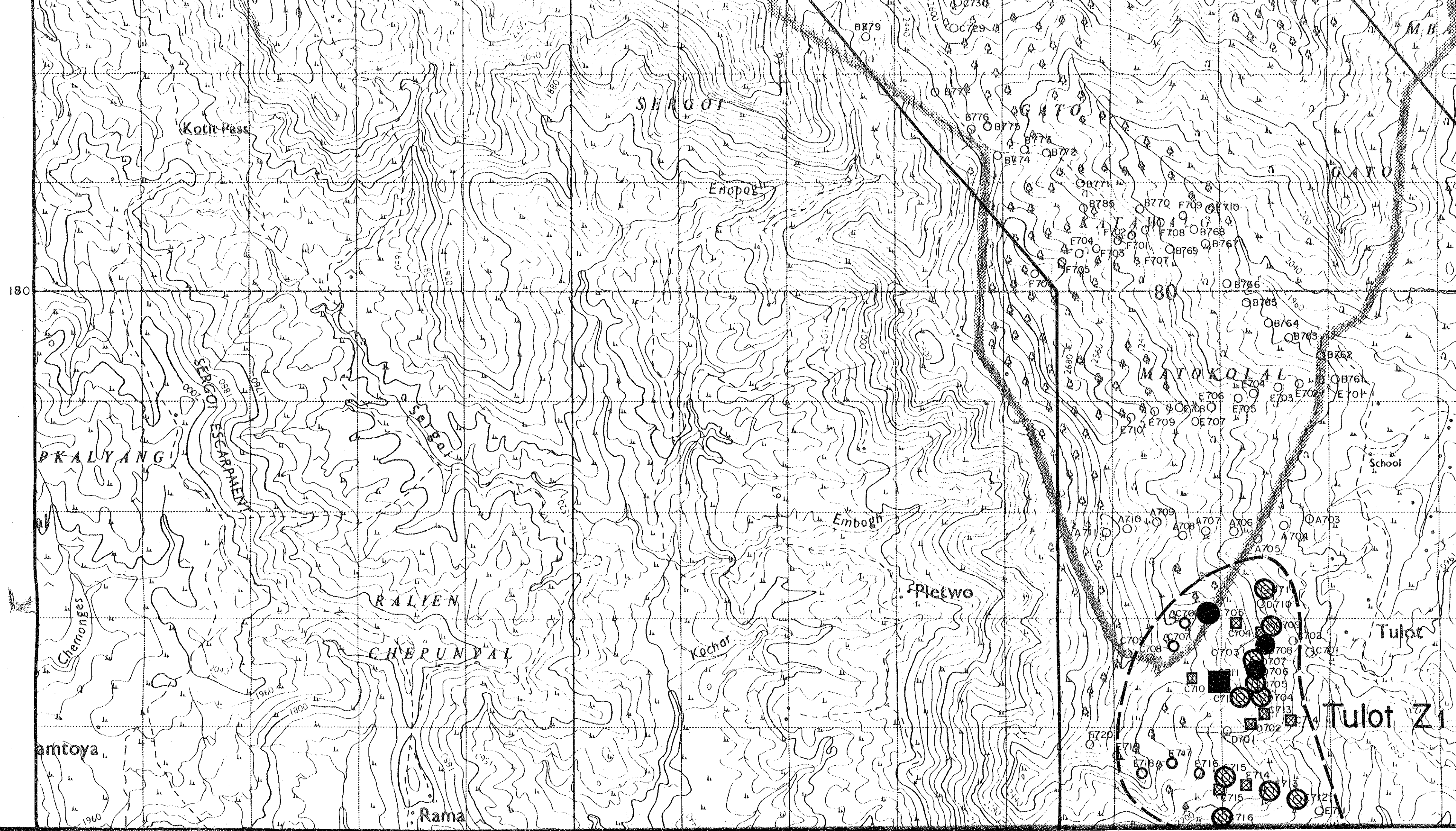


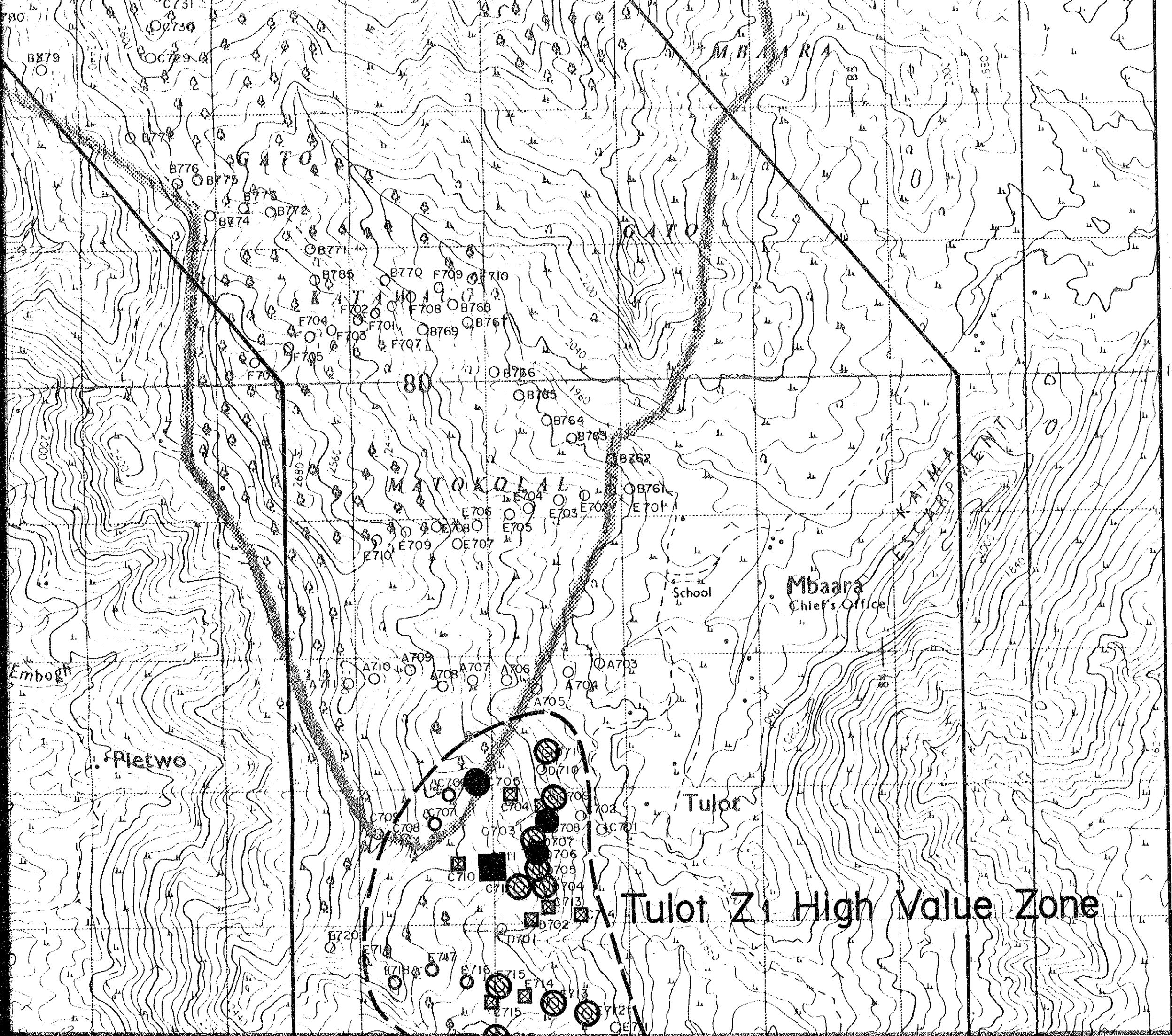
185

LEGEND

Symbol	Number of Samples	Range of Z <sub>1</sub> scores
■	1	$\geq 4.05$ ( $\equiv \bar{X} + 2\sigma$ )
●	3	$4.05 > \geq 3.50$ ( $\equiv \bar{X} + \sigma$ )
⊘	12	$3.50 > \geq 2.95$ ( $\equiv \bar{X}$ )
⊠	13	$2.95 > \geq 2.40$ ( $\equiv \bar{X} - \sigma$ )
○	7	$2.40 > \geq 1.70$ ( $\equiv 99\%$ level value of high Z <sub>1</sub> value population)







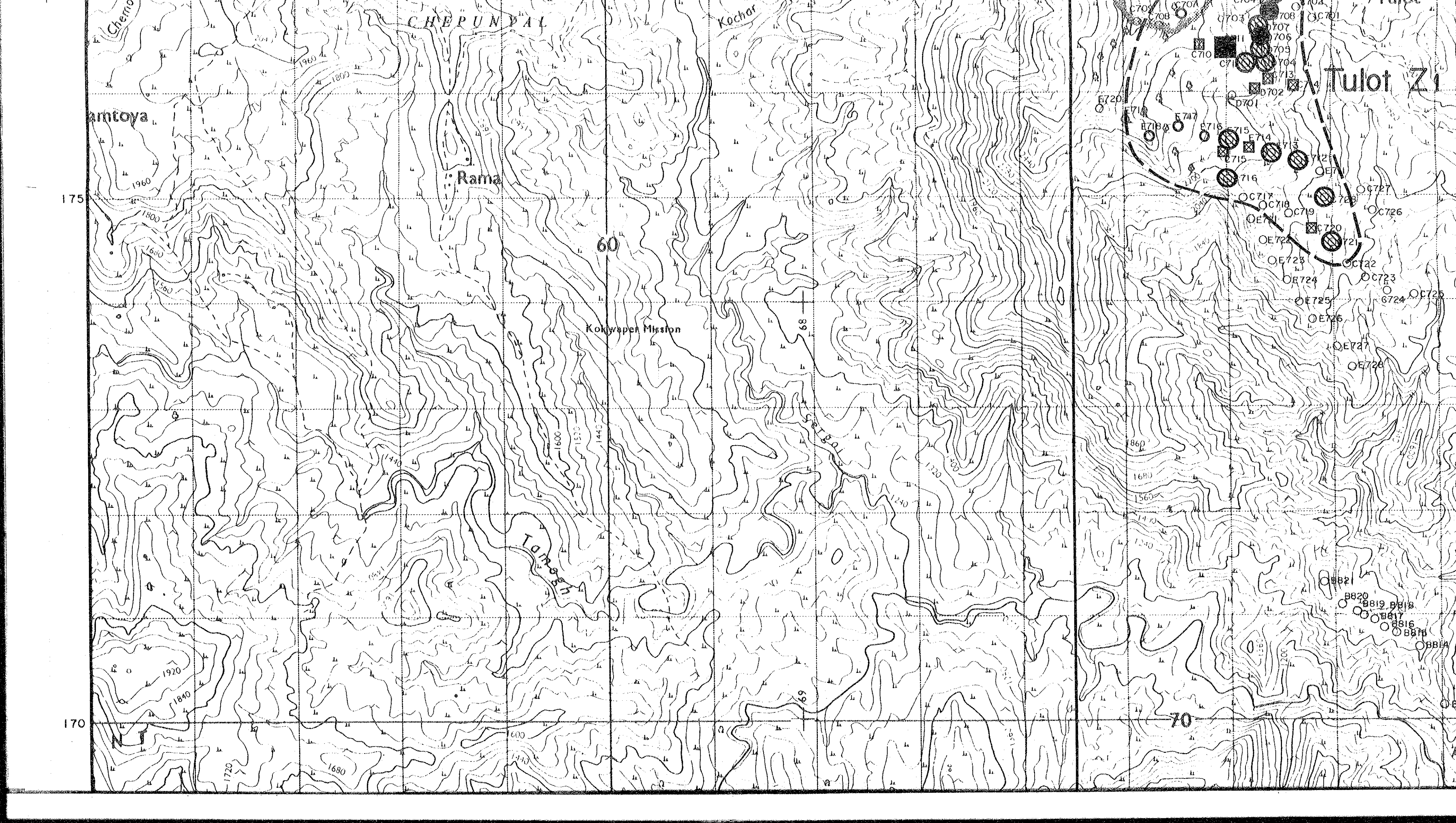
	1	$\geq 4.05$	( $\approx \bar{X} + 2\sigma$ )
	3	$4.05 > \geq 3.50$	( $\approx \bar{X} + \sigma$ )
	12	$3.50 > \geq 2.95$	( $\approx \bar{X}$ )
	13	$2.95 > \geq 2.40$	( $\approx \bar{X} - \sigma$ )
	7	$2.40 > \geq 1.70$	(= 99% level value of high Z1 value population)



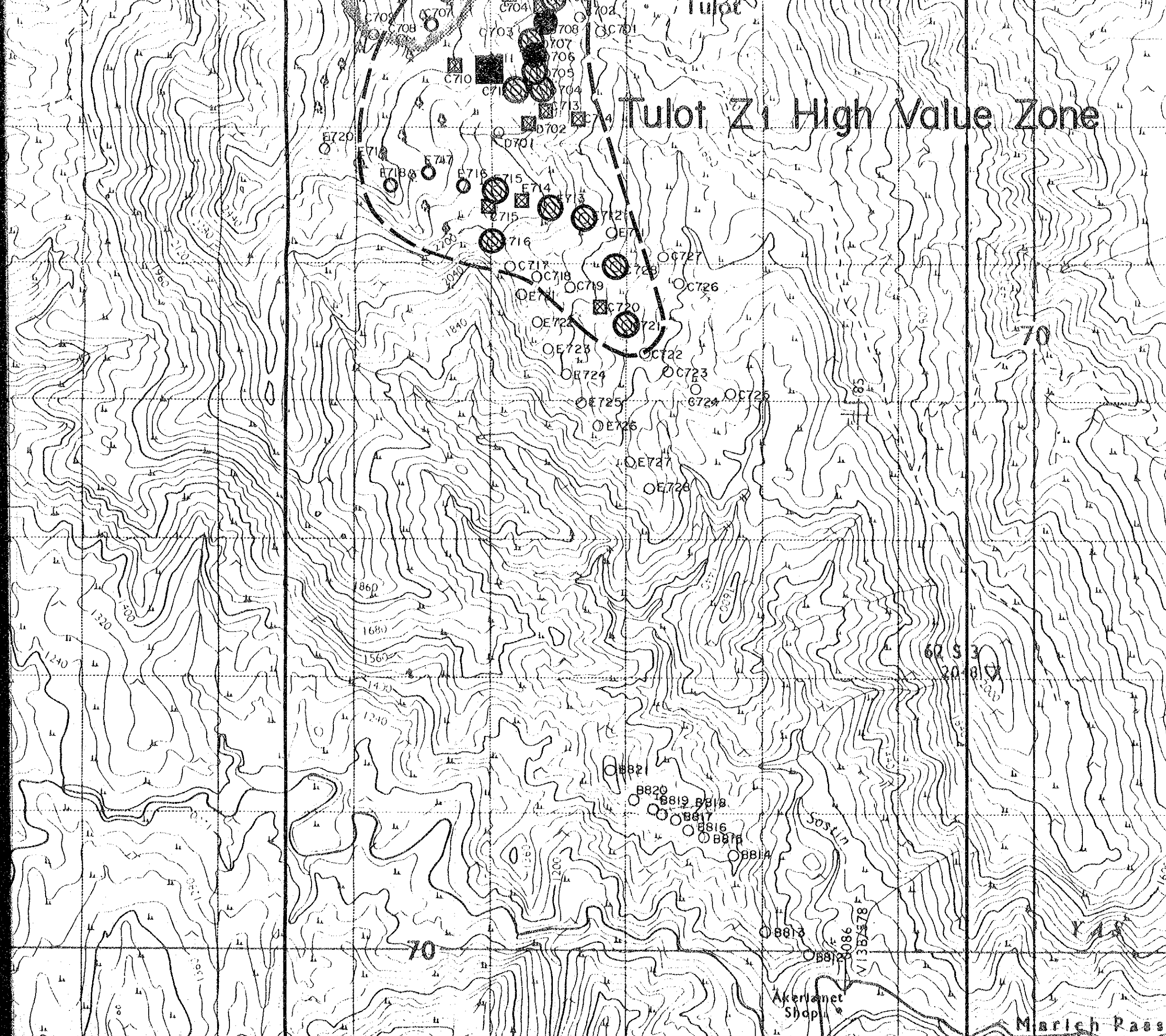
Z1 High Value Zone

Tulot Z1 High Value Zone





# Tulot Z1 High Value Zone



175

170

Marich Pass



170

70

Kang

ORTUM

SOKA

ORTUM

KALAPOT

WAKORR

Wakor  
Pkt

1920  
1840

1720

1680

1440

1400

1520

1480

1600

1500

1400

1300

1200

1100

1000

900

800

1700

1600

1500

1400

1300

1200

1100

1000

900

1800

1700

1600

1500

1400

1300

1200

1100

1000

1900

1800

1700

1600

1500

1400

1300

1200

1100

2000

1900

1800

1700

1600

1500

1400

1300

1200

2100

2000

1900

1800

1700

1600

1500

1400

1300

0A748

0A747

0A746

0A745

0A744

0A743

0A742

0A749

0A750

0A751

0A752

0A753

0A387

0A388

0A389

0A390

0A391

0A392

0A393

0A394

0A395

0A396

0A397

0A398

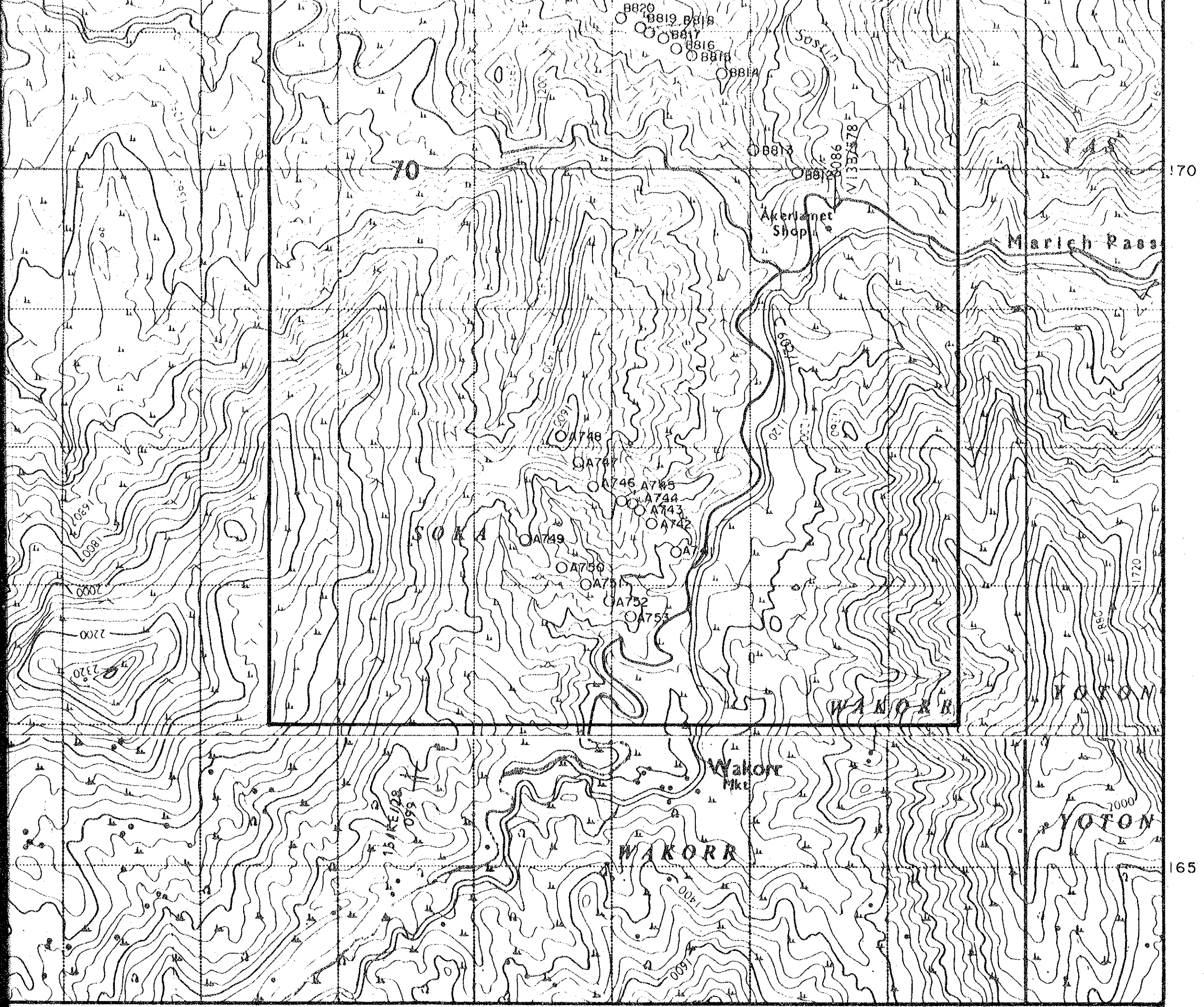
0A399

0A400

755

760

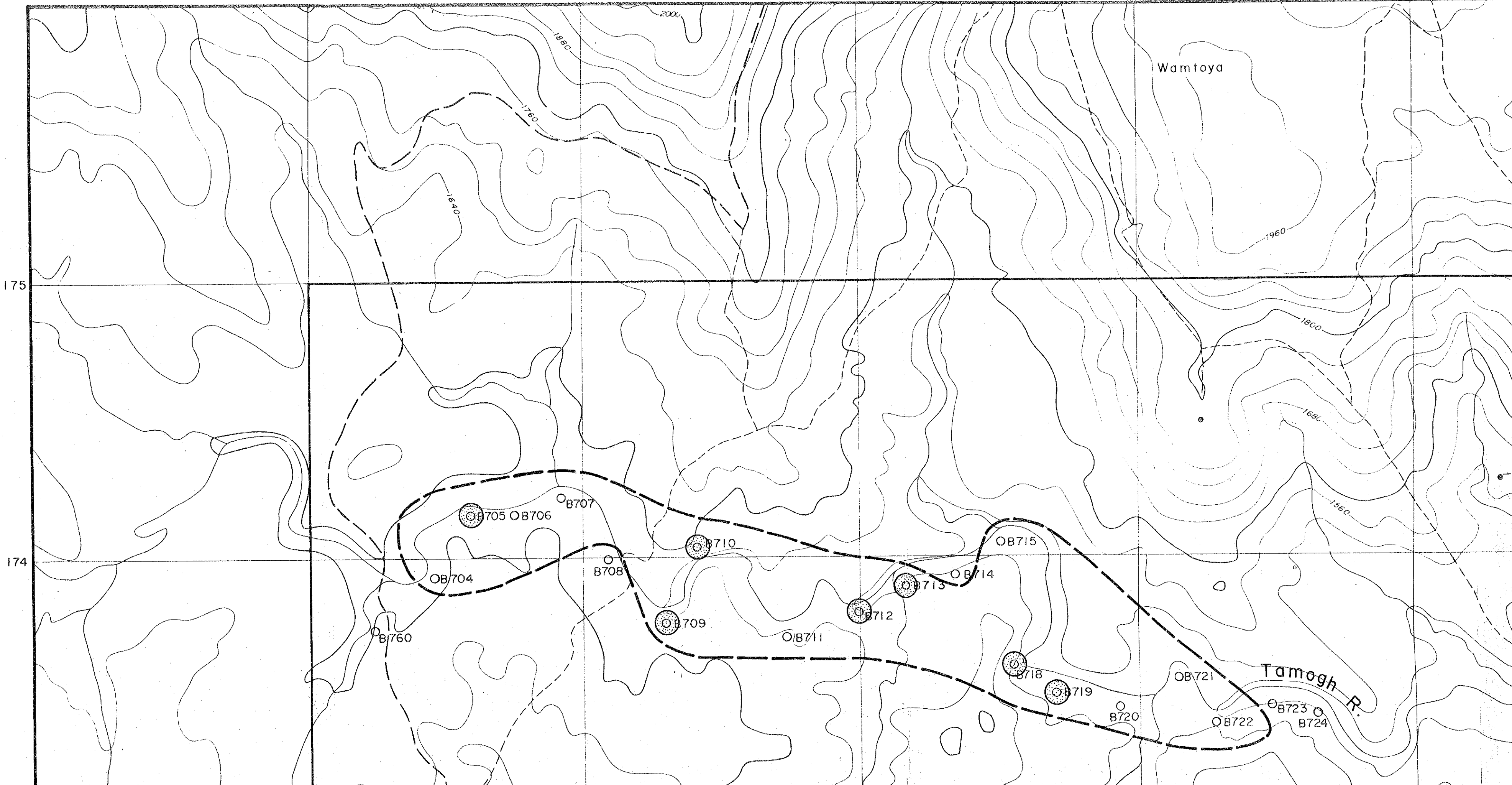
765



765

770





Wamtoya

1960

1800

1680

1550

175

174

OB707

OB705 OB706

OB704

B708

OB710

OB709

OB711

OB712

OB713

OB714

OB715

OB718

OB719

B720

OB721

OB722

OB723

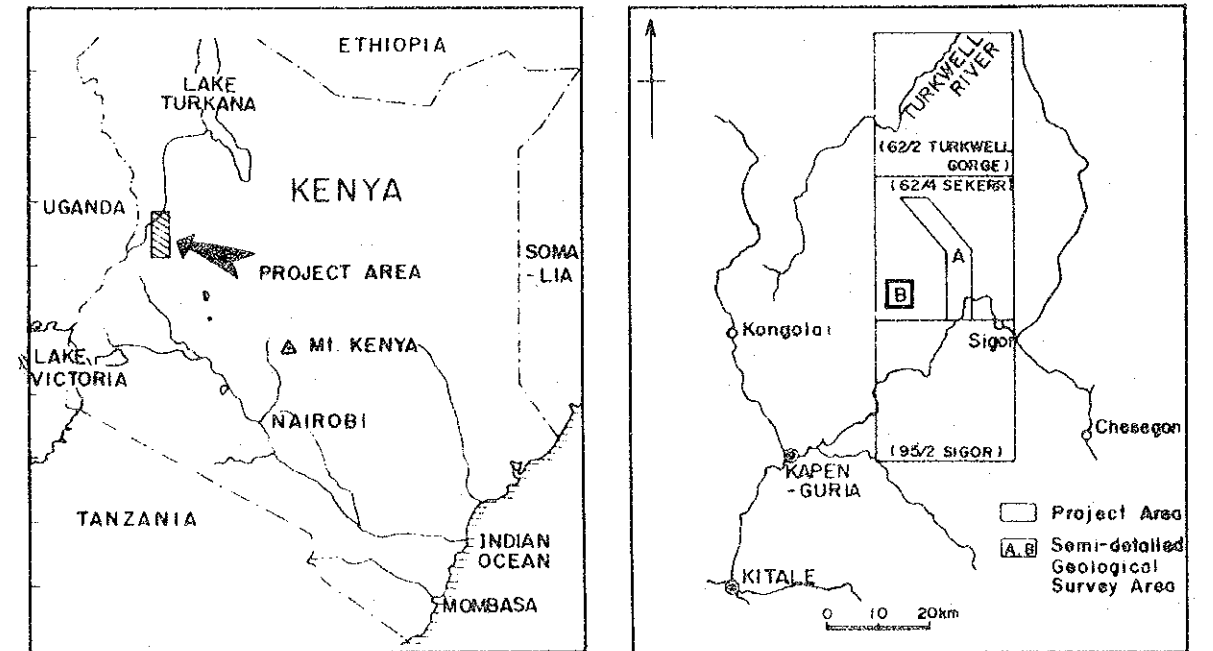
B724

Tamogh R.

MINERAL EXPLORATION  
IN  
THE KERIO VALLEY DEVELOPMENT AUTHORITY AREA  
(PHASE I)

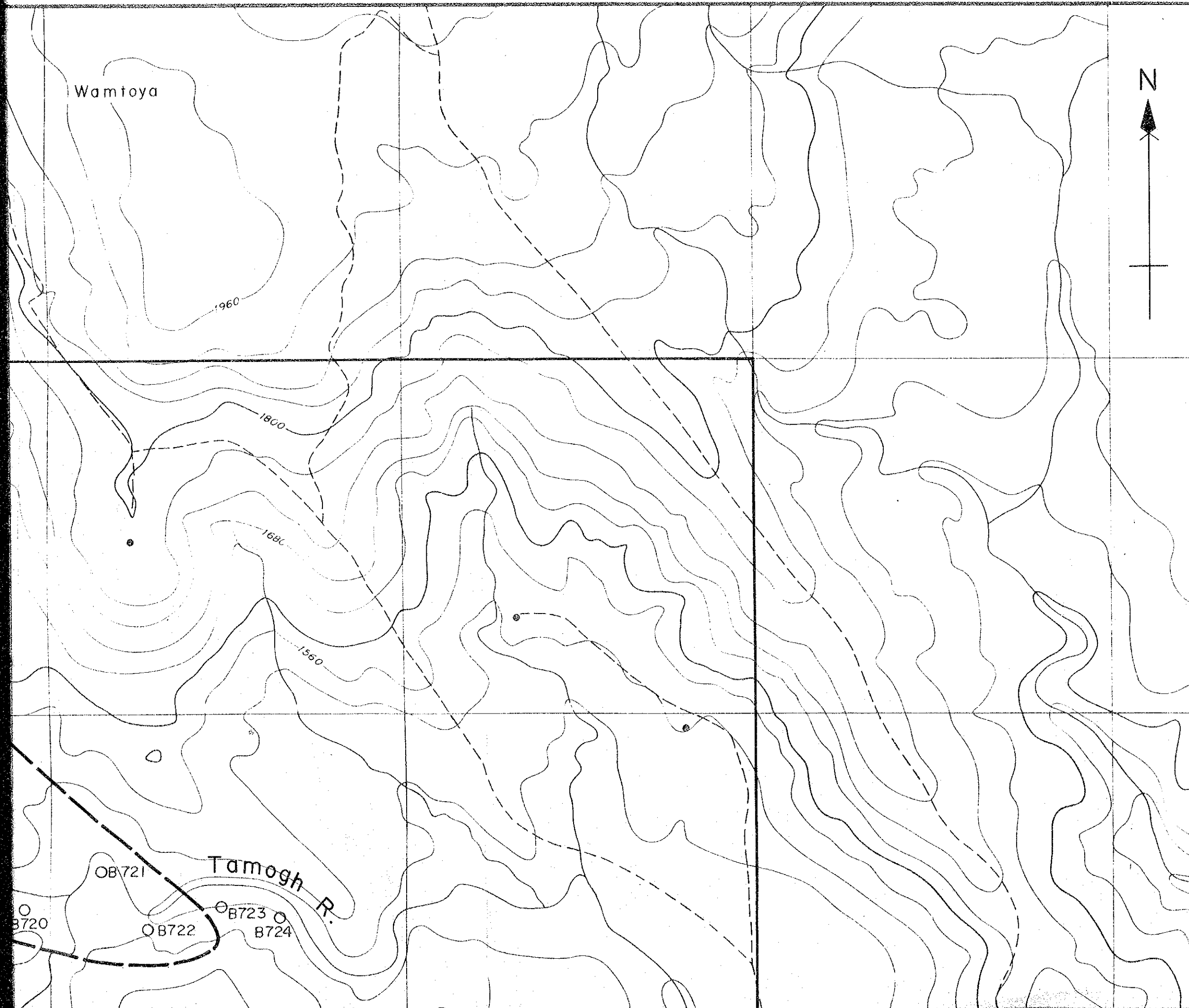
GEOCHEMICAL ANOMALY MAP,  
SEMI-DETAILED  
SURVEY AREA B

LOCATION INDEX

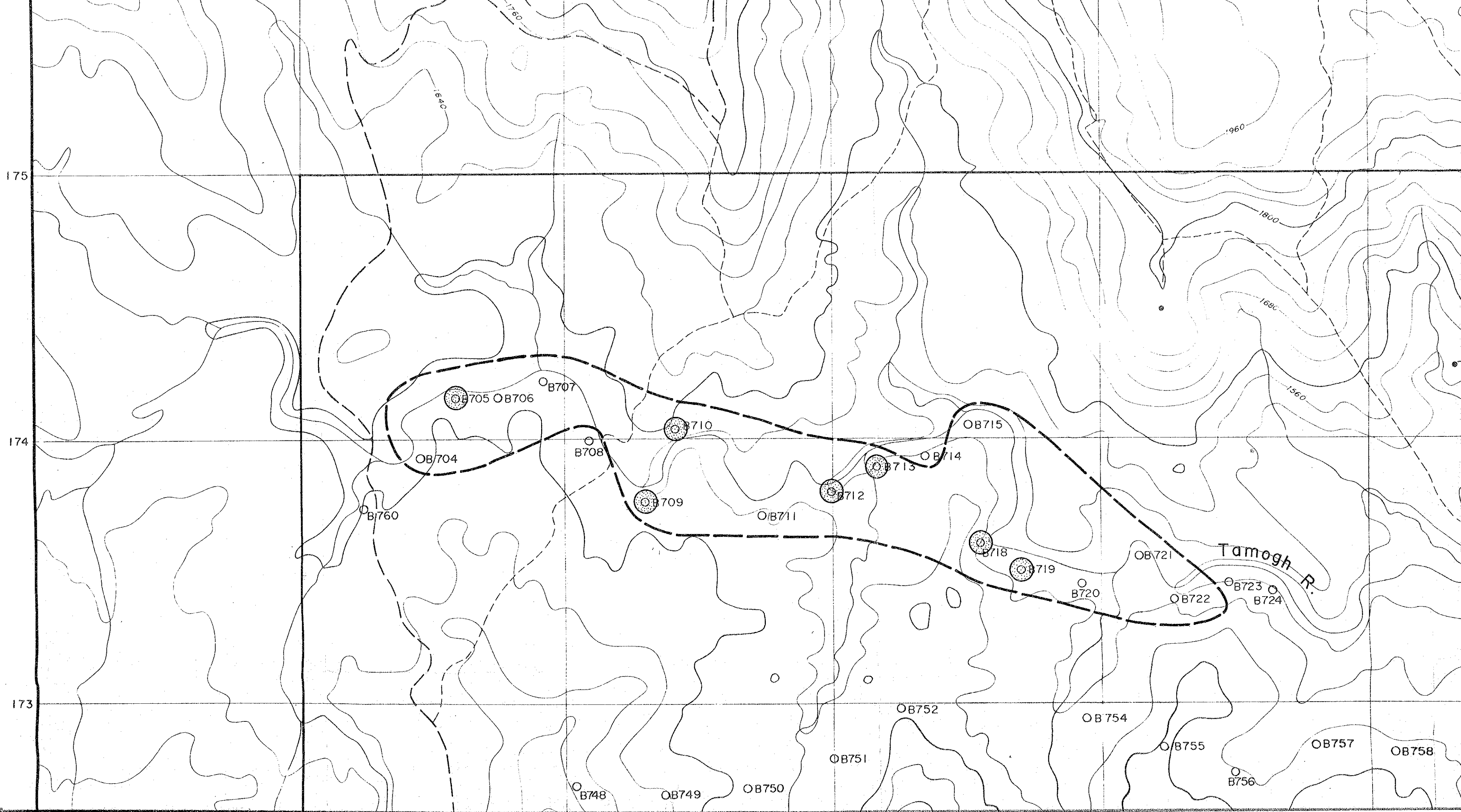


JAPAN INTERNATIONAL COOPERATION AGENCY  
METAL MINING AGENCY OF JAPAN  
March 1984

Scale 1:10,000  
0 1 km

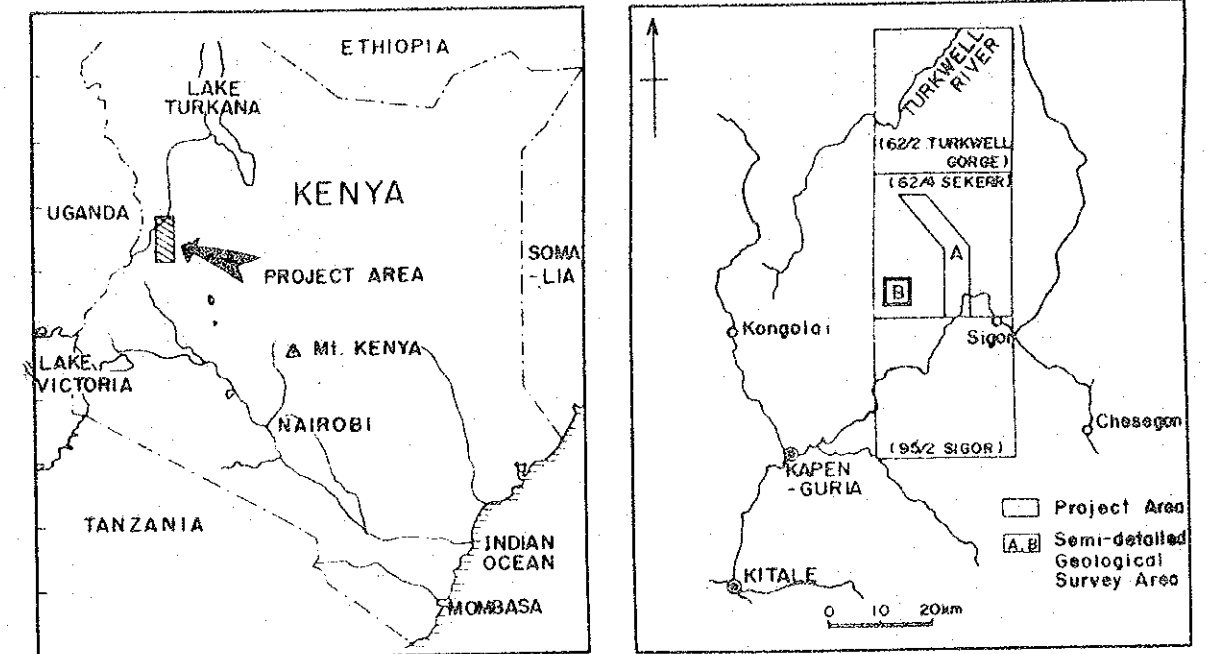






# GEOCHEMICAL ANOMALY MAP, SEMI-DETAILED SURVEY AREA B


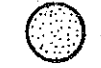

LOCATION INDEX

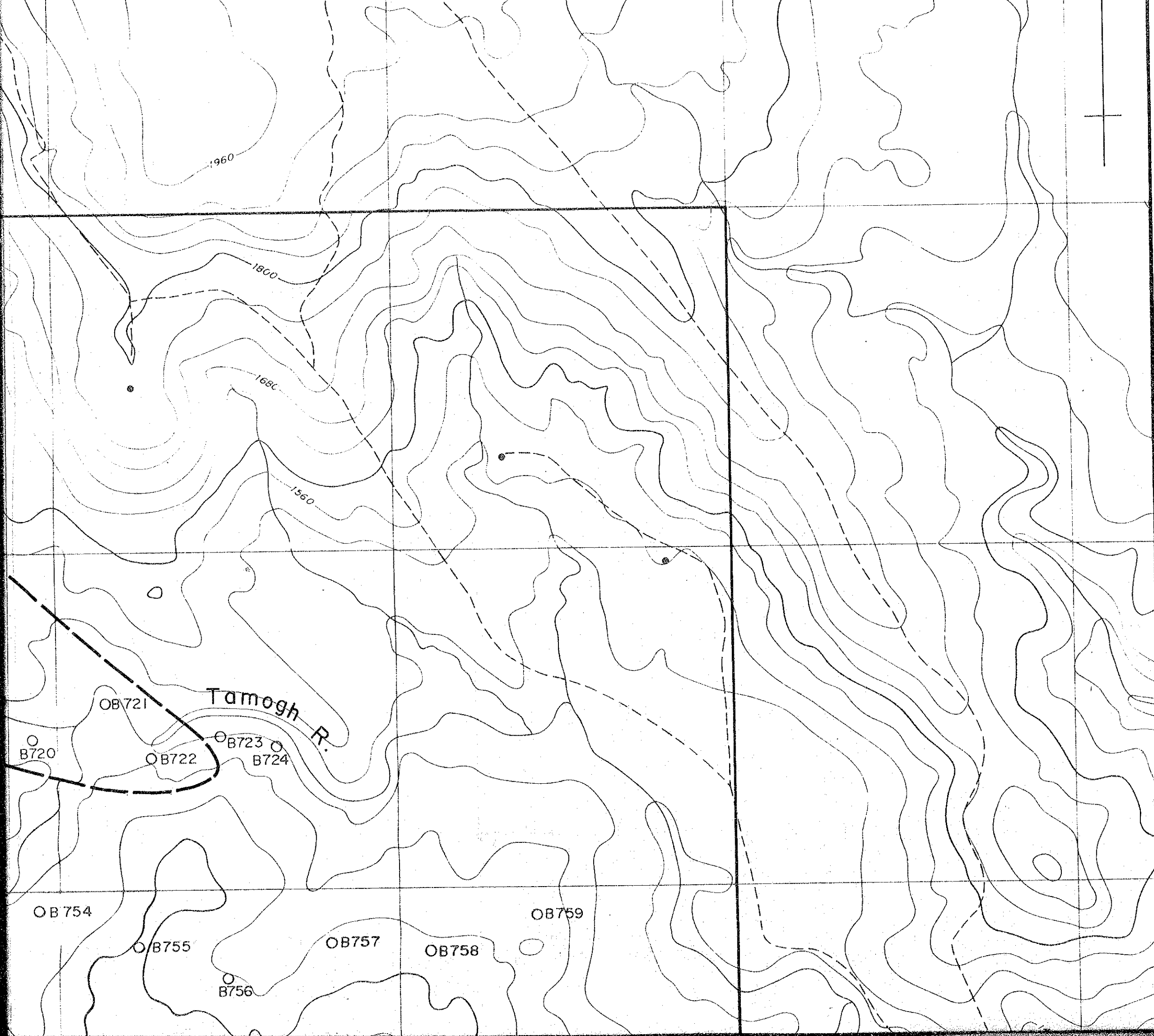


JAPAN INTERNATIONAL COOPERATION AGENCY  
METAL MINING AGENCY OF JAPAN  
March 1984

Scale 1:10,000  
0 1 km

## LEGEND

- W :  Anomalous Sample  $\geq 16$  ppm
- Li :  High-Content Samples  $\geq 5.7$  ppm ( $\bar{X} + \sigma$ )
-  High Li Content Zone  $\geq 5$  ppm

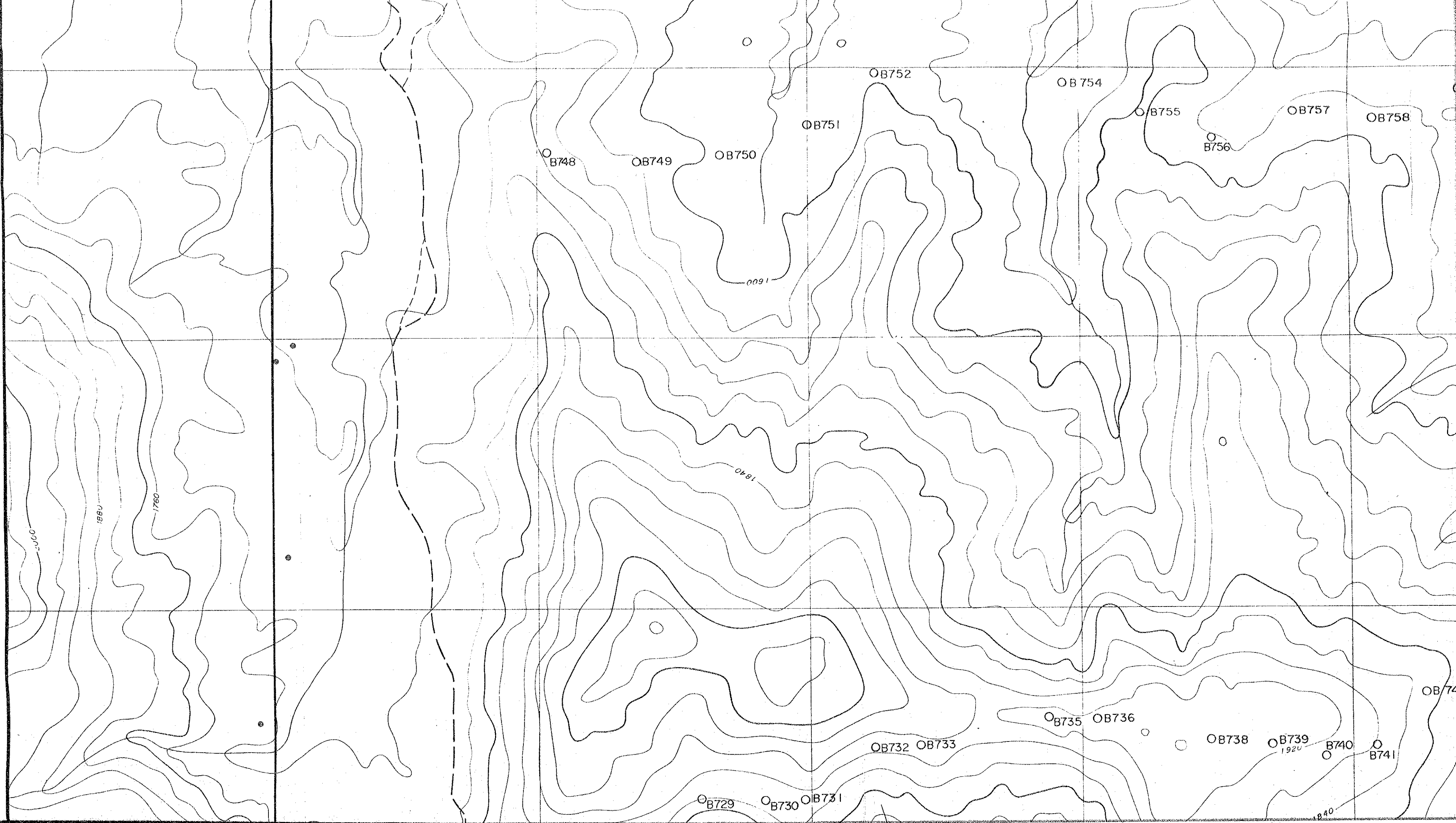


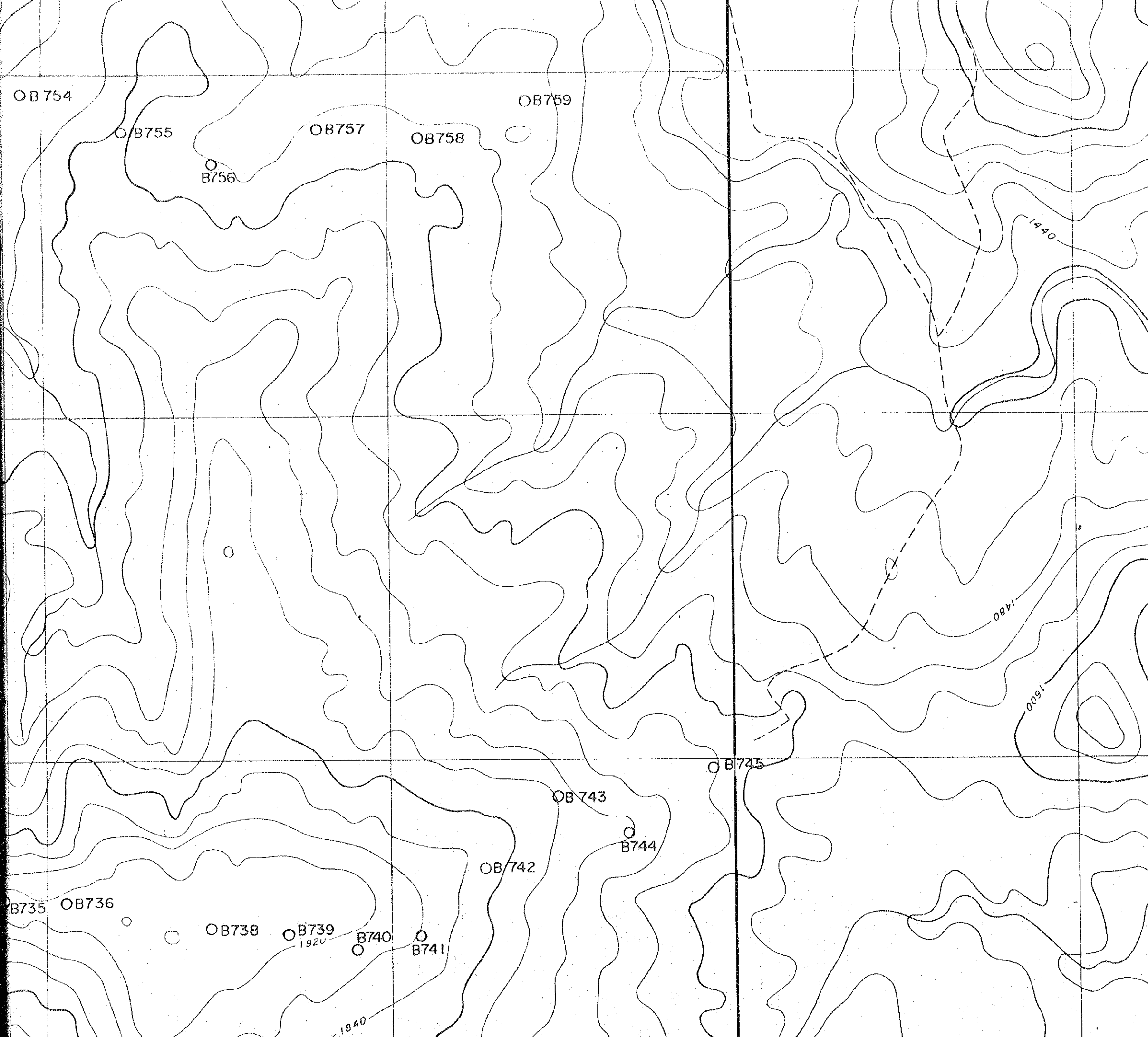


173




172

171





### LEGEND

- W :  Anomalous Sample  $\geq 16$  ppm
- Li :  High-Content Samples  $\geq 5.7$  ppm ( $\bar{X} + \sigma$ )
-  High Li Content Zone  $\geq 5$  ppm

### Assay Results of Soil Samples

Unit : ppm

	SAMPLE No.	Nb	Ta	Sn	W	Li	F
1	B704	<10	<2	1	<2	5	47
2	B705	<10	<2	<1	3	6	66
3	B706	<10	<2	<1	<2	5	37
4	B707	<10	<2	1	3	5	26
5	B708	<10	<2	1	<2	4	103
6	B709	<10	2	4	2	7	140
7	B710	<10	<2	<1	<2	6	85
8	B711	<10	<2	<1	4	5	119
9	B712	<10	<2	1	2	6	117
10	B713	<10	<2	<1	<2	6	125
11	B714	<10	<2	1	<2	3	70
12	B715	<10	2	1	<2	5	84
13	B718	<10	2	1	2	7	109
14	B719	<10	<2	1	<2	8	110
15	B720	<10	<2	1	<2	5	116
16	B721	<10	<2	3	<2	5	157
17	B722	<10	<2	<1	<2	5	184
18	B723	<10	<2	<1	<2	2	64
19	B724	<10	<2	1	<2	2	90
20	B725	<10	<2	1	16	4	147
21	B726	<10	<2	1	<2	3	96
22	B727	<10	<2	<1	<2	2	170
23	B728	<10	<2	<1	<2	2	104
24	B729	<10	<2	<1	2	5	127
25	B730	<10	<2	<1	<2	4	89
26	B731	<10	<2	<1	<2	3	140
27	B732	<10	<2	<1	2	3	80
28	B733	<10	<2	<1	<2	3	67
29	B735	<10	<2	<1	<2	3	46
30	B736	<10	<2	<1	<2	2	62



170

70

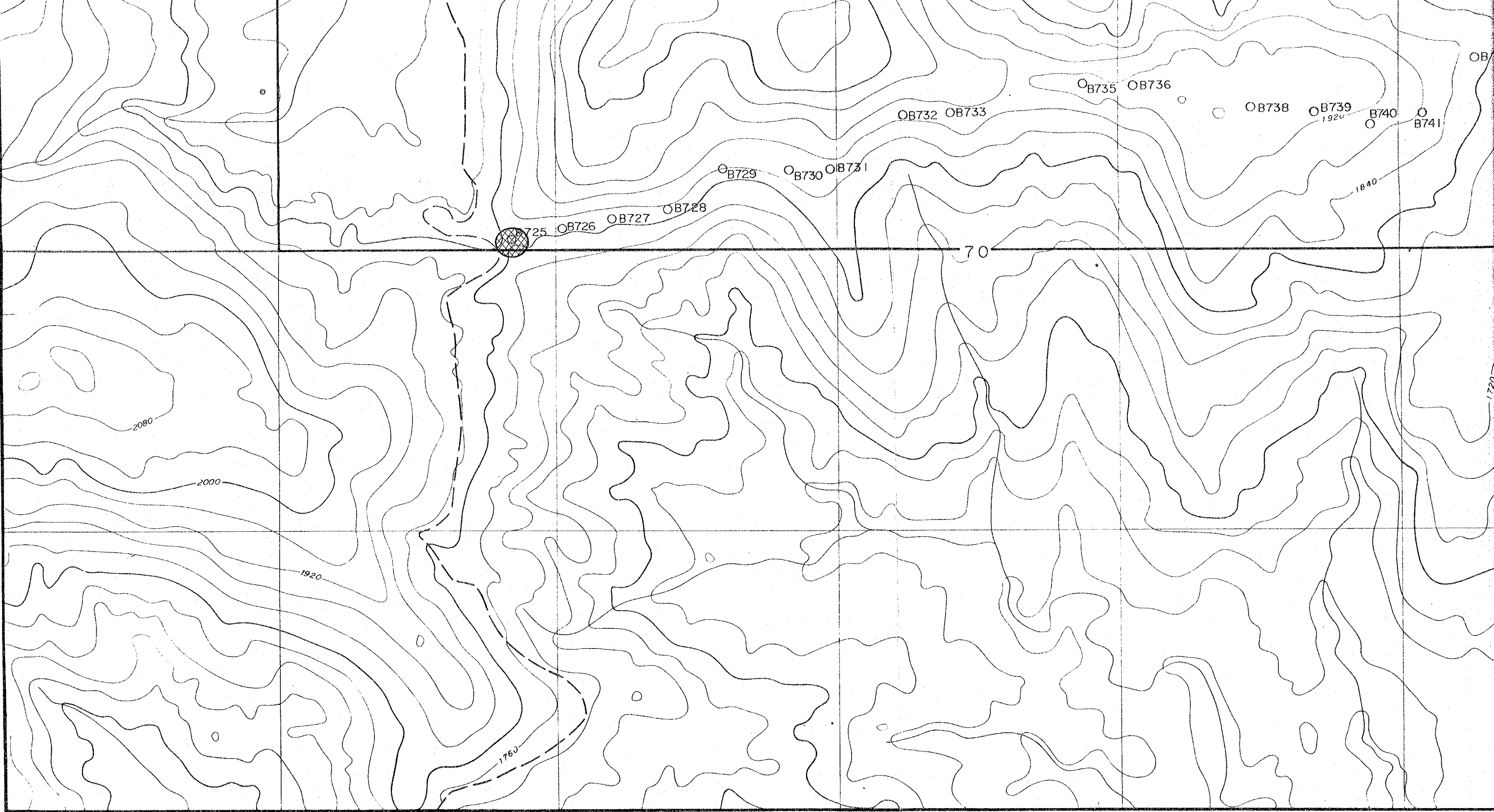
752

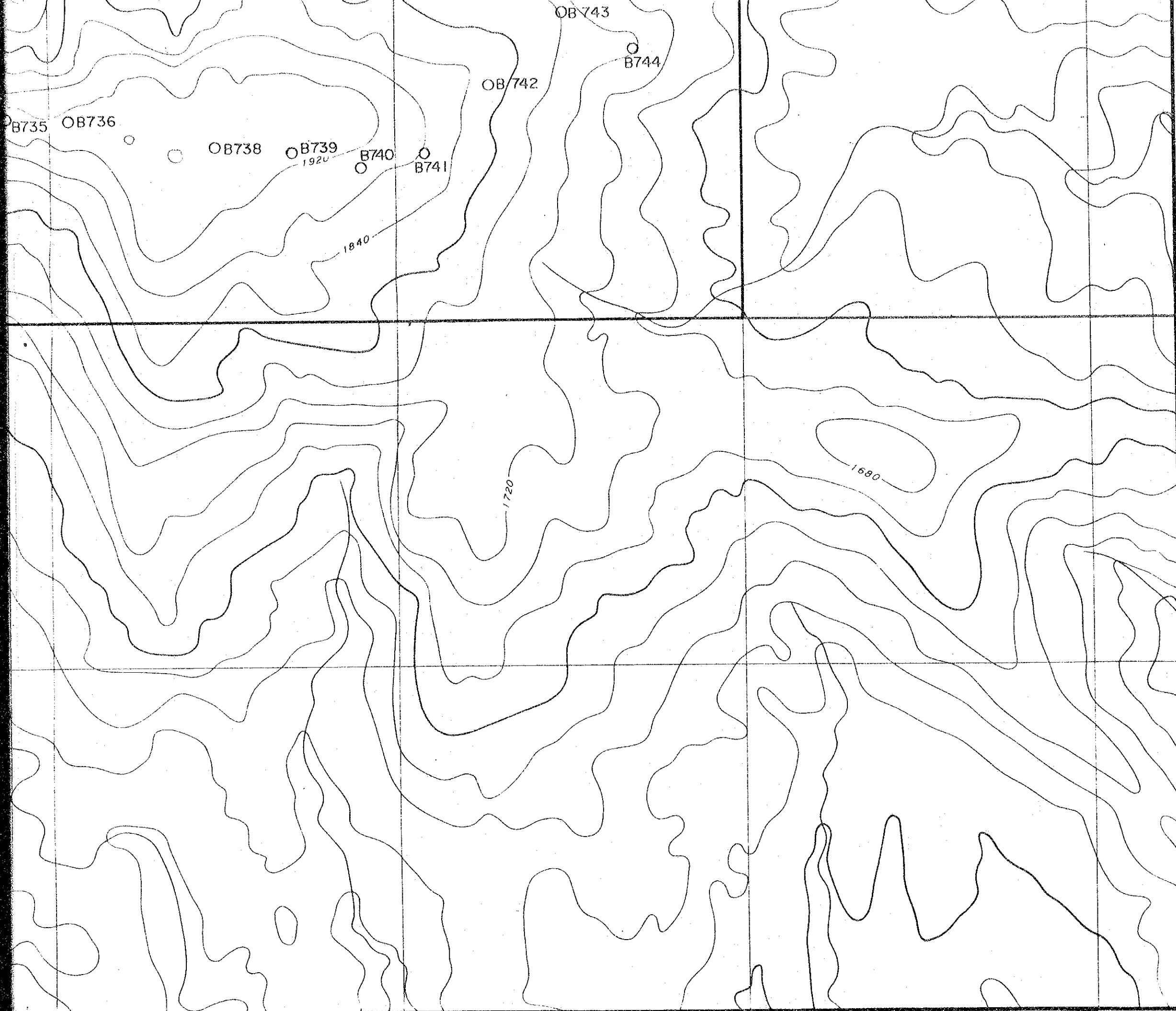
753

754

755

756



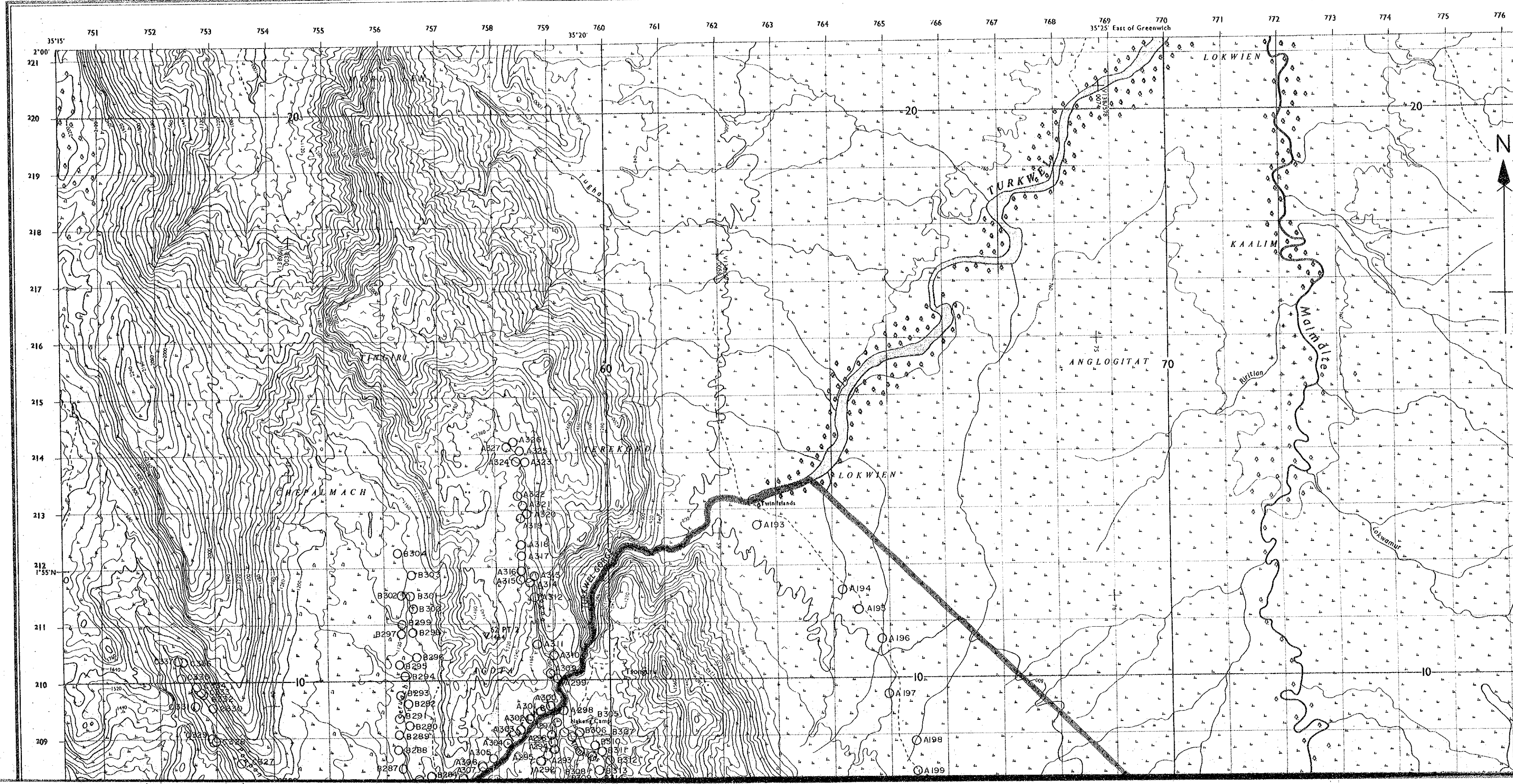


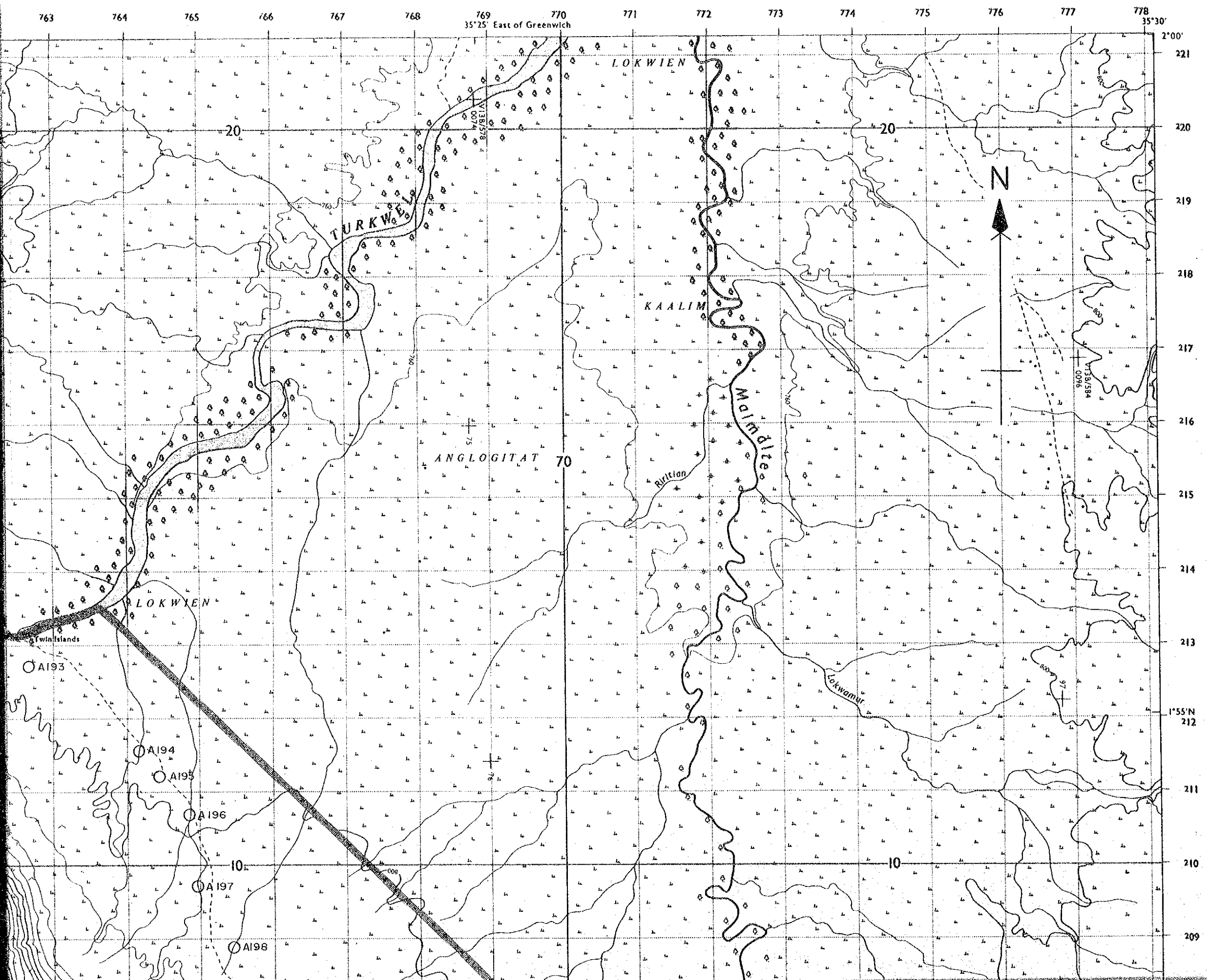
19	B724	<10	<2	<1	<2	2	147
20	B725	<10	<2	1	16	4	96
21	B726	<10	<2	1	<2	3	170
22	B727	<10	<2	<1	<2	2	104
23	B728	<10	<2	<1	<2	2	127
24	B729	<10	<2	<1	2	5	89
25	B730	<10	<2	<1	<2	4	140
26	B731	<10	<2	<1	<2	3	80
27	B732	<10	<2	<1	2	3	67
28	B733	<10	<2	<1	<2	3	46
29	B735	<10	<2	<1	<2	3	62
30	B736	<10	<2	<1	<2	2	45
31	B738	<10	<2	<1	<2	2	82
32	B739	<10	<2	<1	<2	1	70
33	B740	<10	<2	<1	<2	3	58
34	B741	<10	<2	1	<2	4	129
35	B742	<10	<2	<1	<2	1	66
36	B743	<10	<2	<1	<2	1	39
37	B744	<10	<2	<1	<2	2	84
38	B745	<10	<2	<1	<2	<1	34
39	B748	<10	<2	<1	<2	1	38
40	B749	<10	<2	<1	<2	<1	74
41	B750	<10	<2	<1	<2	2	99
42	B751	<10	<2	<1	<2	1	119
43	B752	<10	<2	3	<2	1	82
44	B754	<10	<2	<1	<2	2	74
45	B755	<10	<2	<1	<2	2	116
46	B756	<10	<2	<1	<2	4	138
47	B757	<10	<2	<1	<2	2	38
48	B758	<10	2	<1	<2	6	81
49	B759	<10	<2	<1	<2	<1	107
50	B760	<10	<2	<1	<2	2	

○ B 712 Sample Number and Location



# TURKWEL GORGE

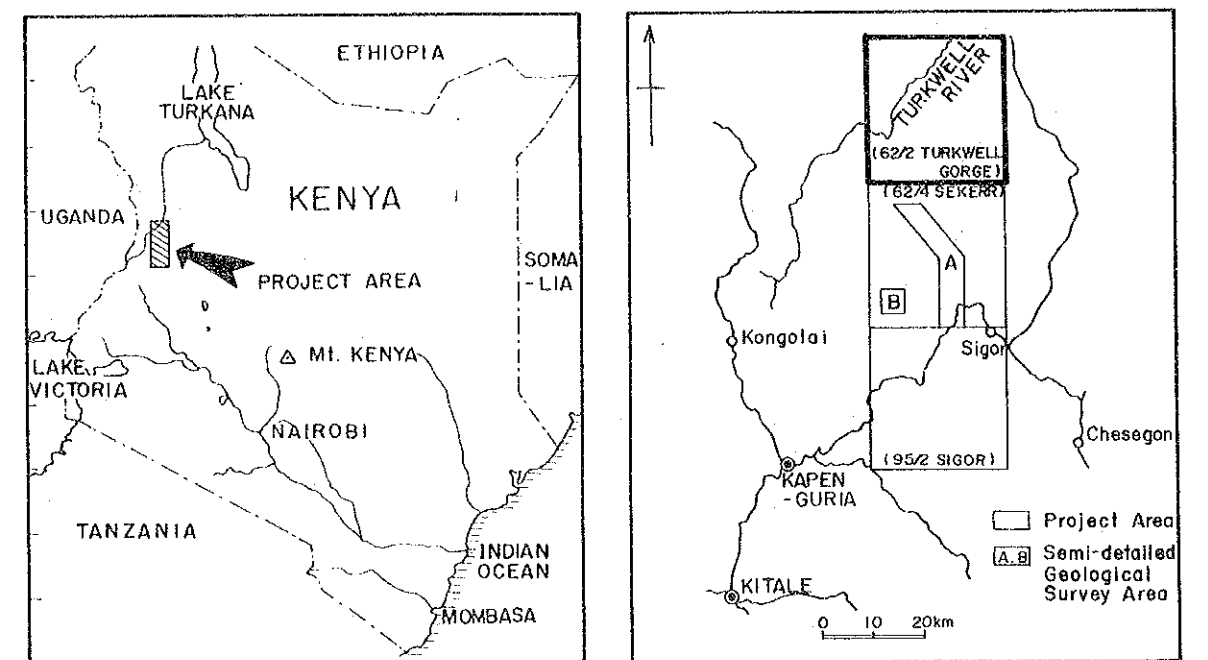




MINERAL EXPLORATION  
IN  
THE KERIO VALLEY DEVELOPMENT AUTHORITY AREA  
(PHASE I)

LOCATION MAP OF STREAM  
SEDIMENTS SAMPLES, REGIONAL  
SURVEY AREA (TURKWEL GORGE)

LOCATION INDEX



JAPAN INTERNATIONAL COOPERATION AGENCY  
METAL MINING AGENCY OF JAPAN  
March 1984

