

PL II

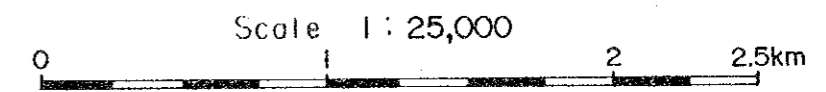
MINERAL EXPLORATION
IN
THE KERIO VALLEY DEVELOPMENT AUTHORITY AREA
(PHASE I)

GEOCHEMICAL ANOMALY MAP, SEMI-DETAILED SURVEY AREA A

LOCATION INDEX

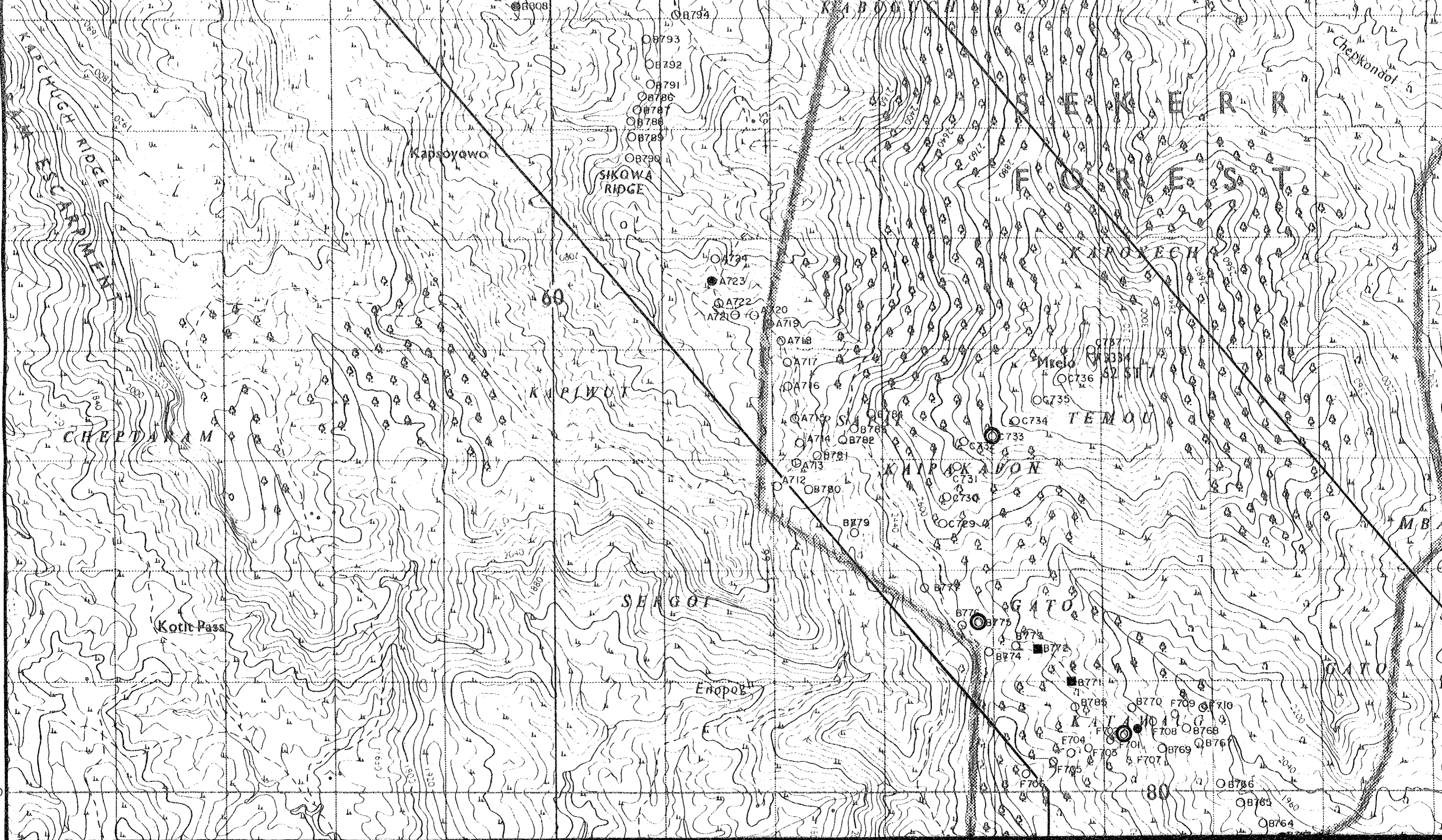
JAPAN INTERNATIONAL COOPERATION AGENCY
METAL MINING AGENCY OF JAPAN
March 1984

Scale 1:25,000

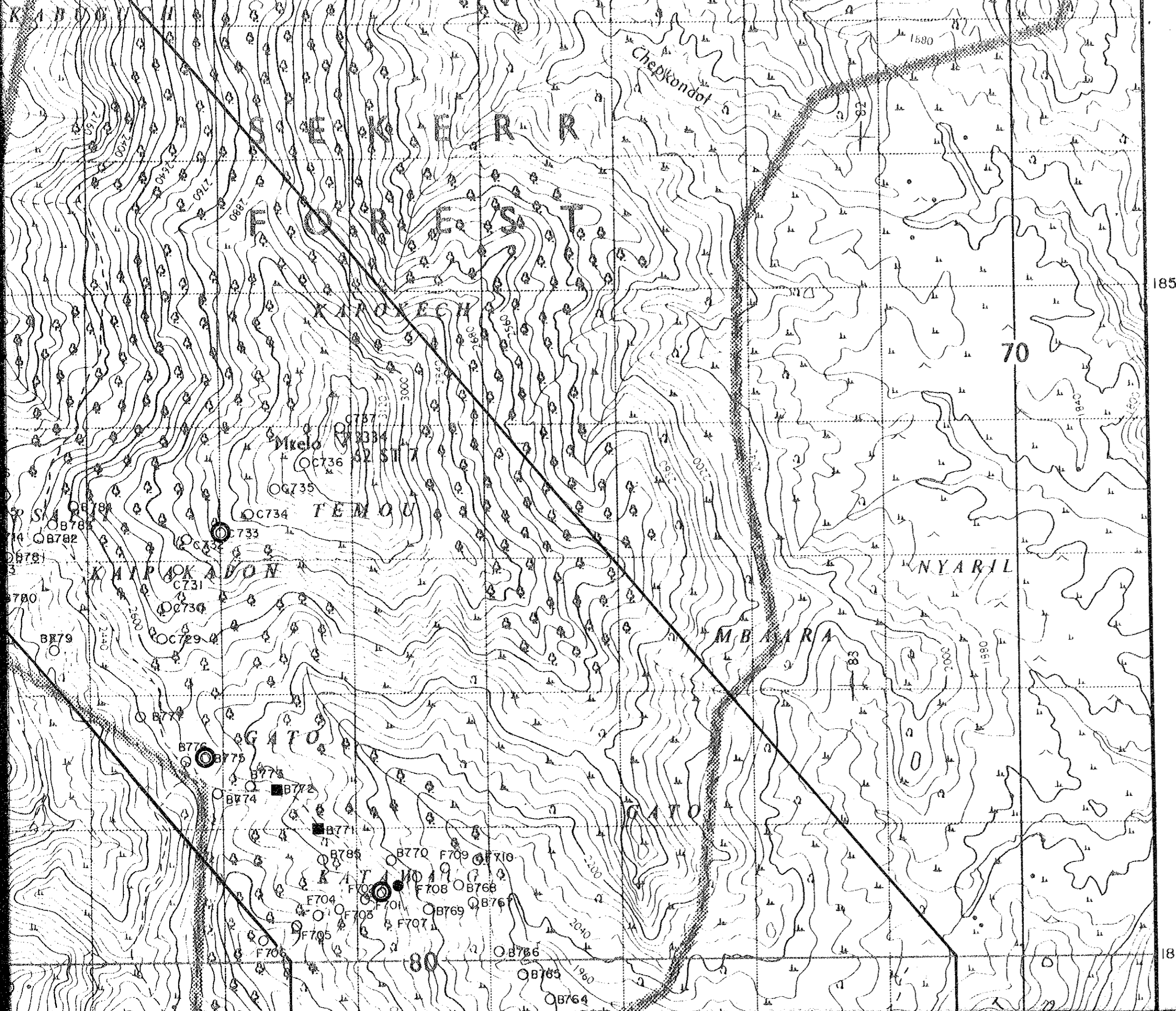
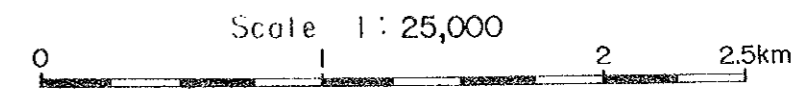


185







180

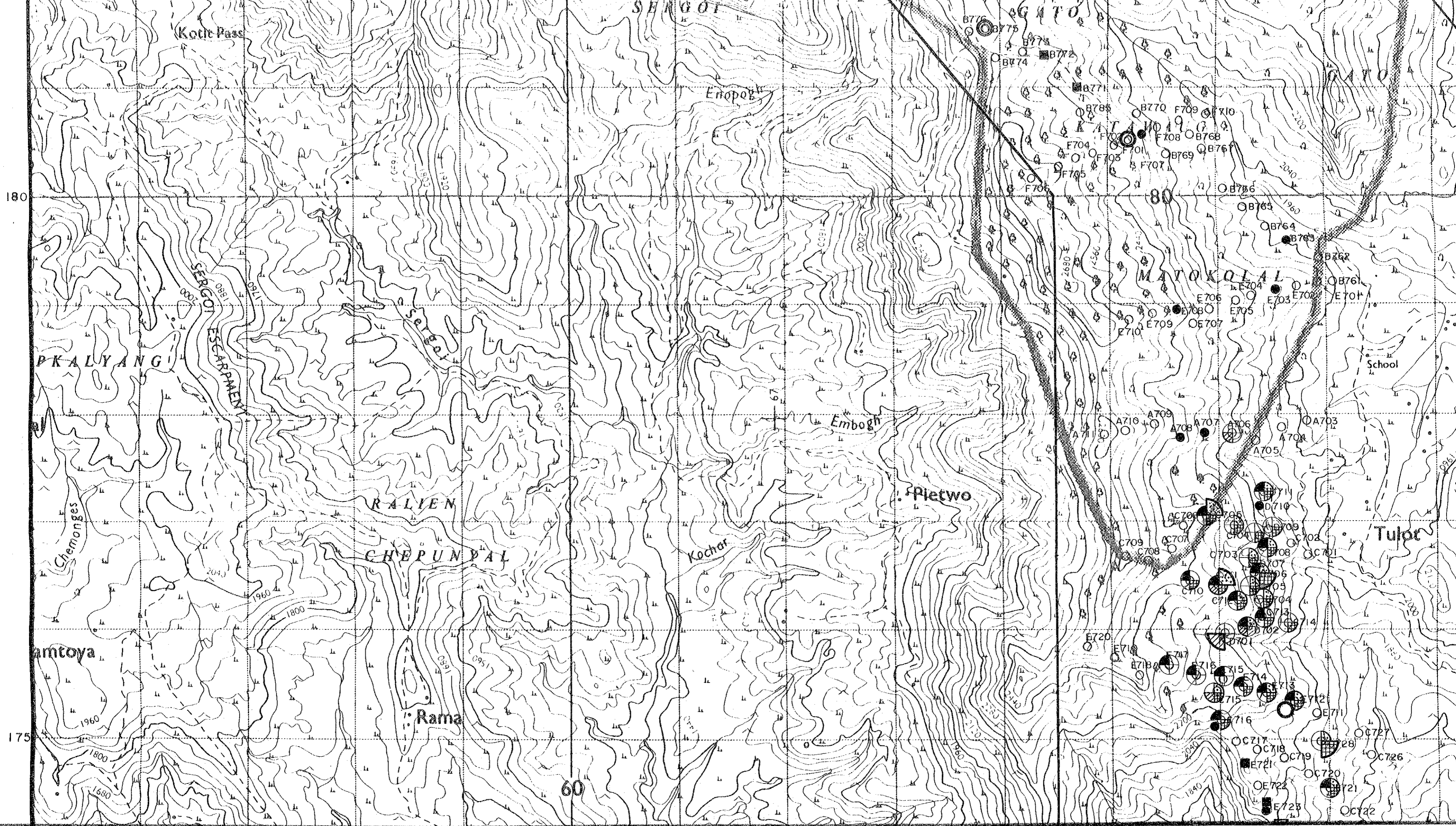


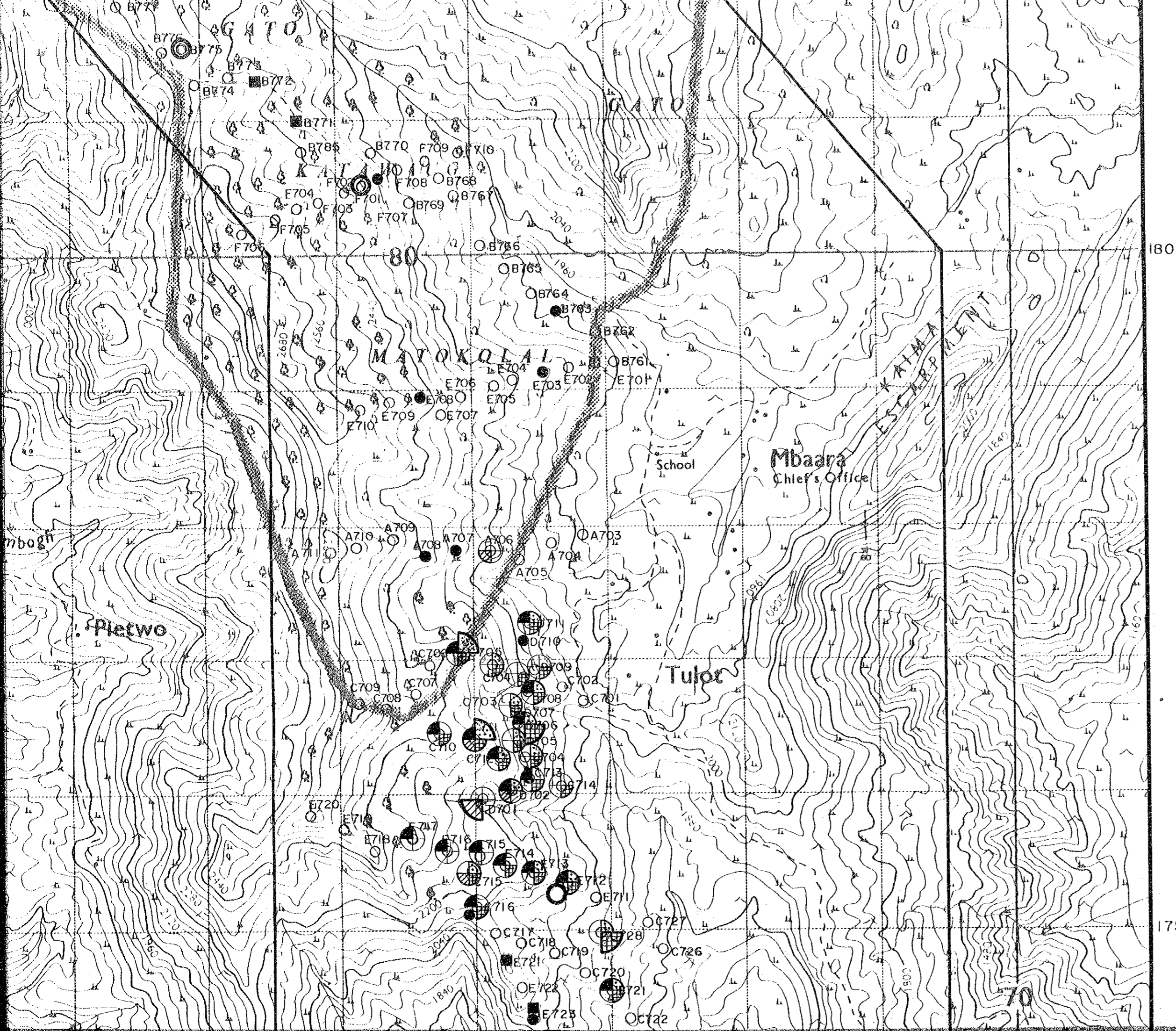
JAPAN INTERNATIONAL COOPERATION AGENCY
 METAL MINING AGENCY OF JAPAN
 March 1984



LEGEND

- 
Anomalies
- 
High-Content Value
- 
Pt Anomalies
- 
Pt High-Content Value
- 
V Anomalies
- 
V High-Content Value





- Pt Anomalies
- Pt High-Content Value
- V Anomalies
- V High-Content Value

Element	Anomalies	High-Content Value
Cr ppm	$\geq 5,919$ (n=0)	$5,919 > \geq 2,891$ (n=20)
Ni ppm	$\geq 6,022$ (n=2)	$6,022 > \geq 2,520$ (n=22)
Co ppm	≥ 211 (n=2)	$211 > \geq 151$ (n=15)
Au ppb	≥ 120 (n=1)	$120 > \geq 30$ (n=4)
Pt ppb	≥ 100 (n=4)	$100 > \geq 50$ (n=13)
V ppm	≥ 446 (n=1)	$446 > \geq 344$ (n=8)

n : number of samples

antoya

Rama

Kokwaper Mission

Tamessu

Xang

175

170

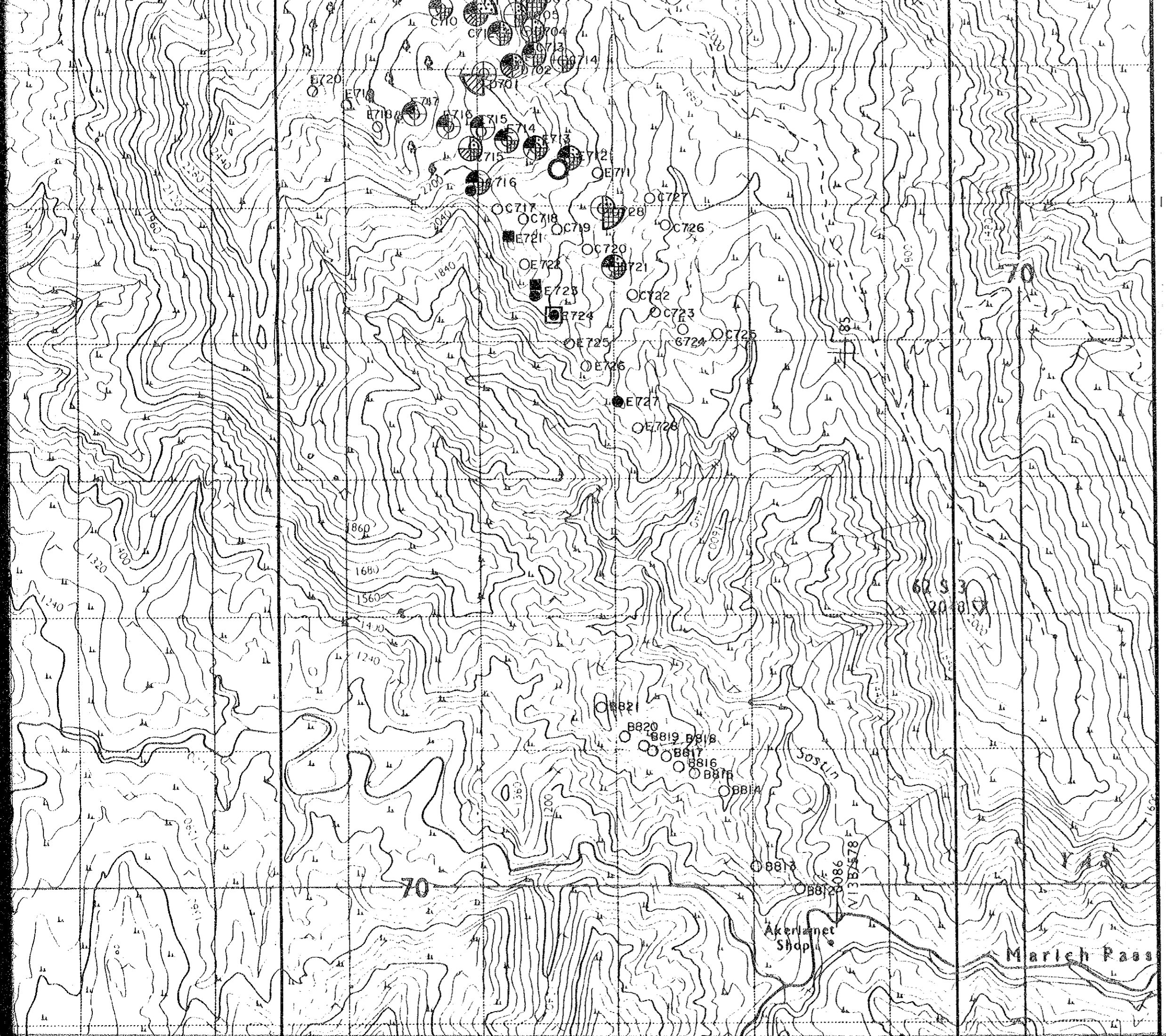
60

68

69

70





175

170

Akerlannet Shop

Marleh Pass

170

70

Xang

ORTUM

ORTUM

KALAPOT

SOKA

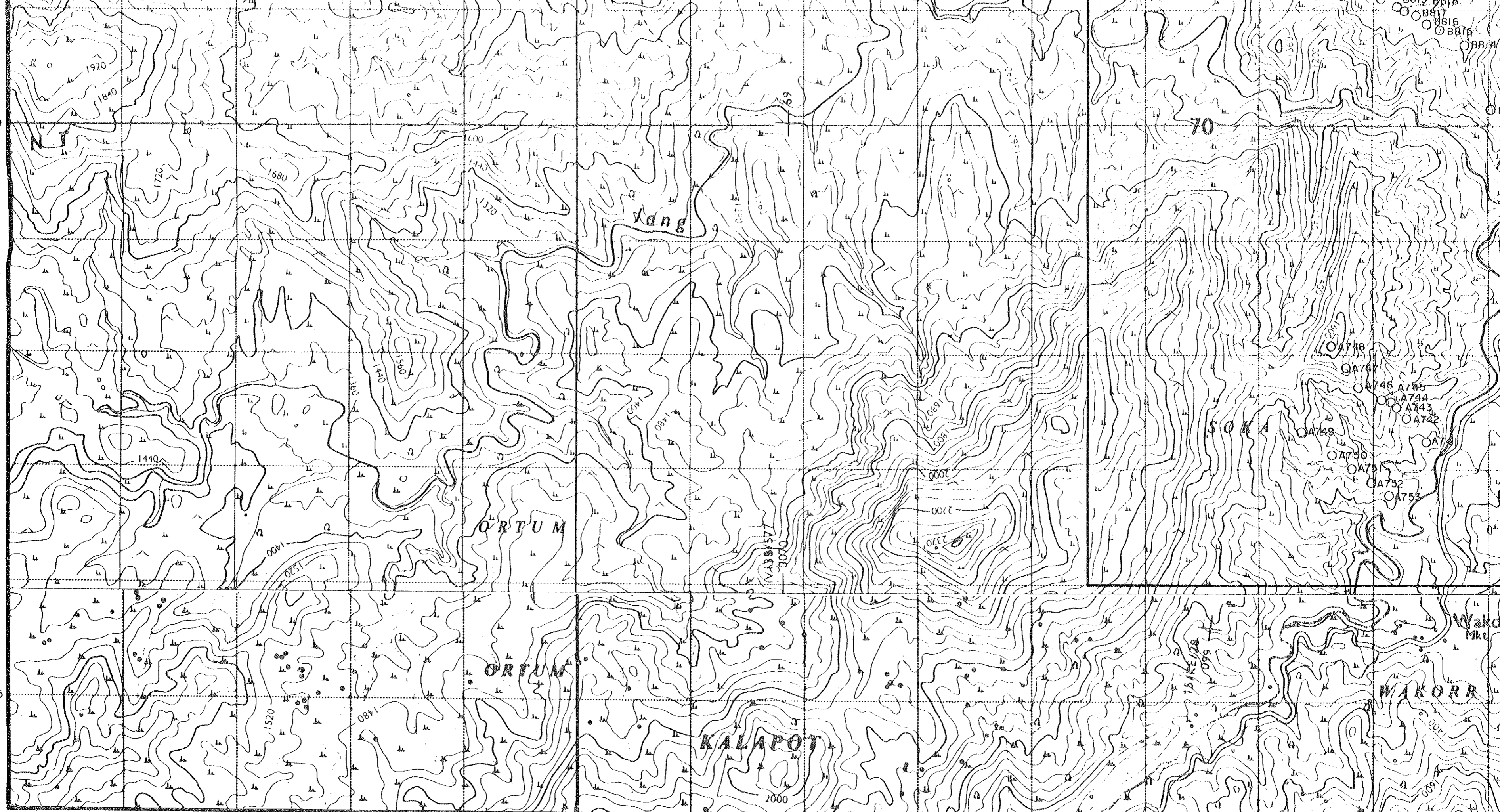
WAKORR

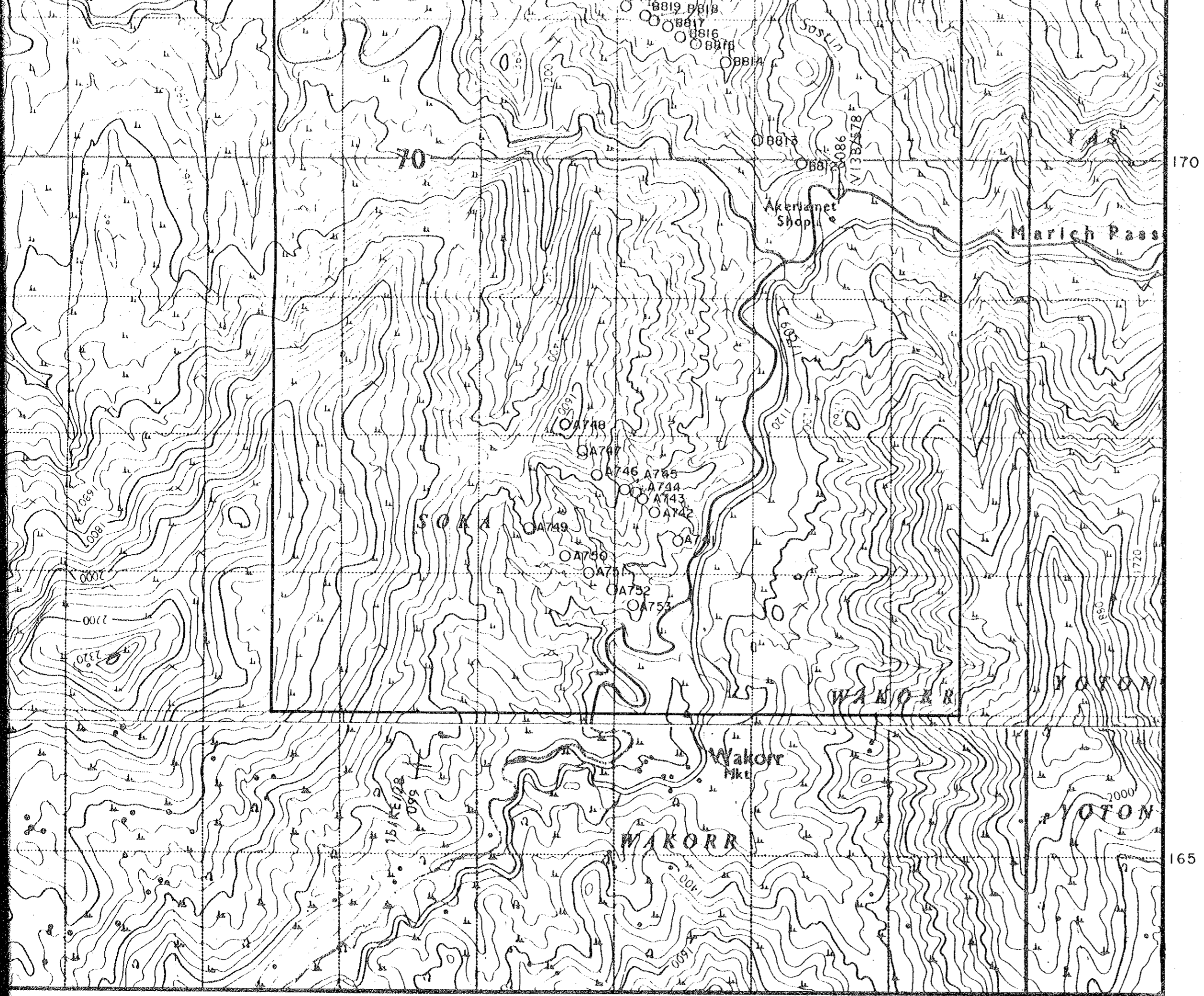
Wakorr
Mkt

755

760

765





765

770

ENDOGH
(ENDOW)

KAINOS

AMURWA

CHORWA

Maficho

Kamngeyon Zi High Value Zone

KAMNGEYON

KAMMEN

KUMERI

ENATONAI

Sikawa

KABOOV

KAPCHUGH RIDGE

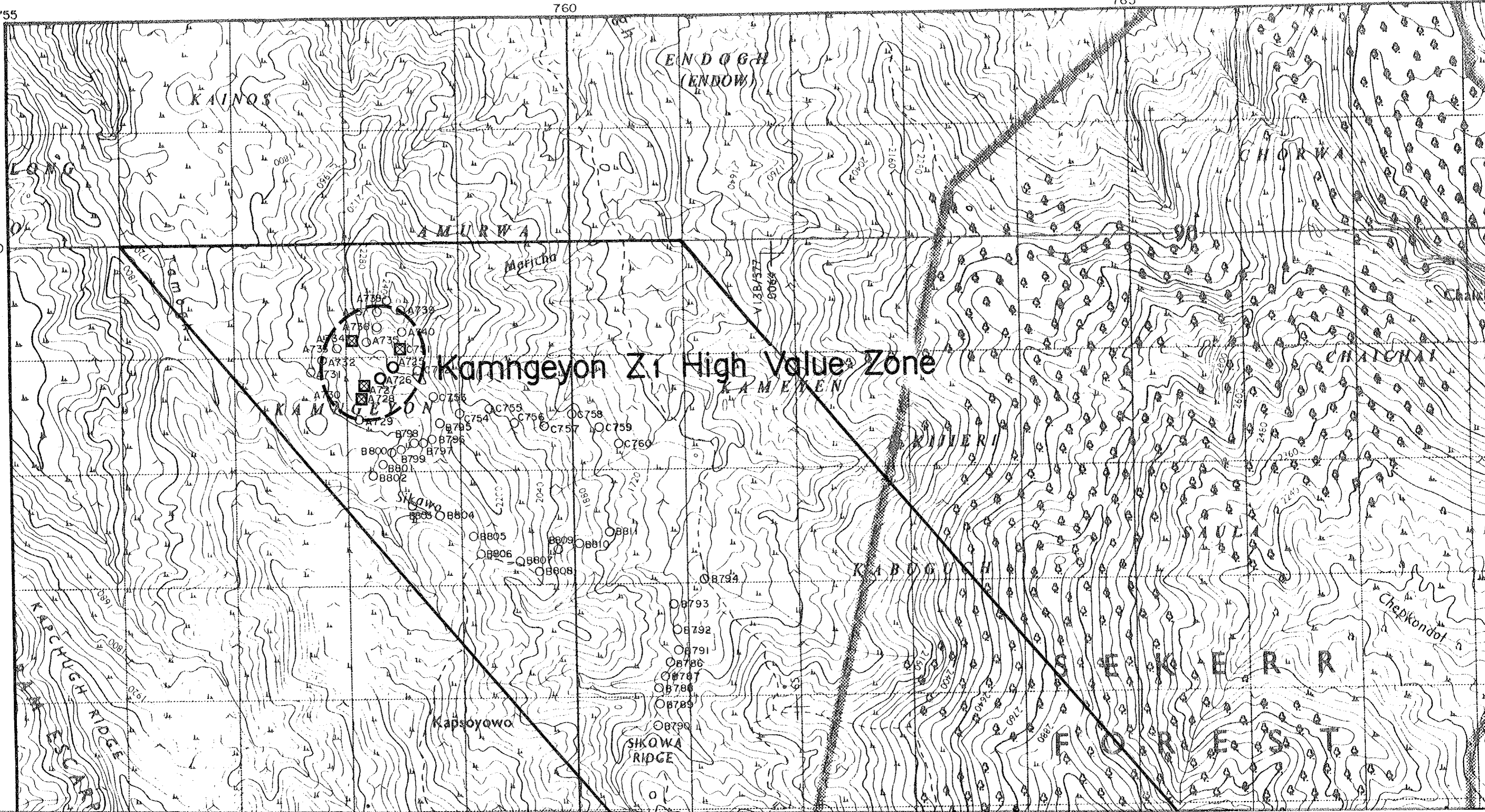
Kapsoyowa

SHQWA
RIDGE

FEKERR

FEFFEST

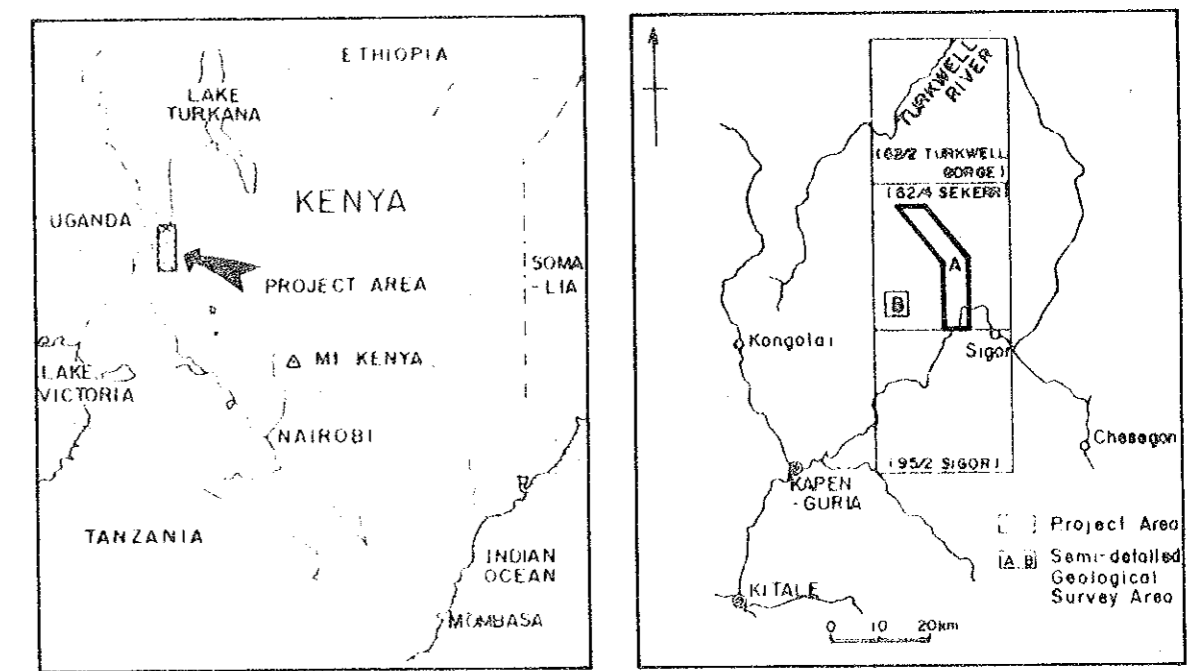
Chepkondol



MINERAL EXPLORATION
 IN
 THE KERIO VALLEY DEVELOPMENT AUTHORITY AREA
 (PHASE I)

**GEOCHEMICAL MAP FOR
 PRINCIPAL COMPONENT Z1,
 SEMI-DETAILED SURVEY AREA A**

LOCATION INDEX



JAPAN INTERNATIONAL COOPERATION AGENCY
 METAL MINING AGENCY OF JAPAN
 March, 1984

