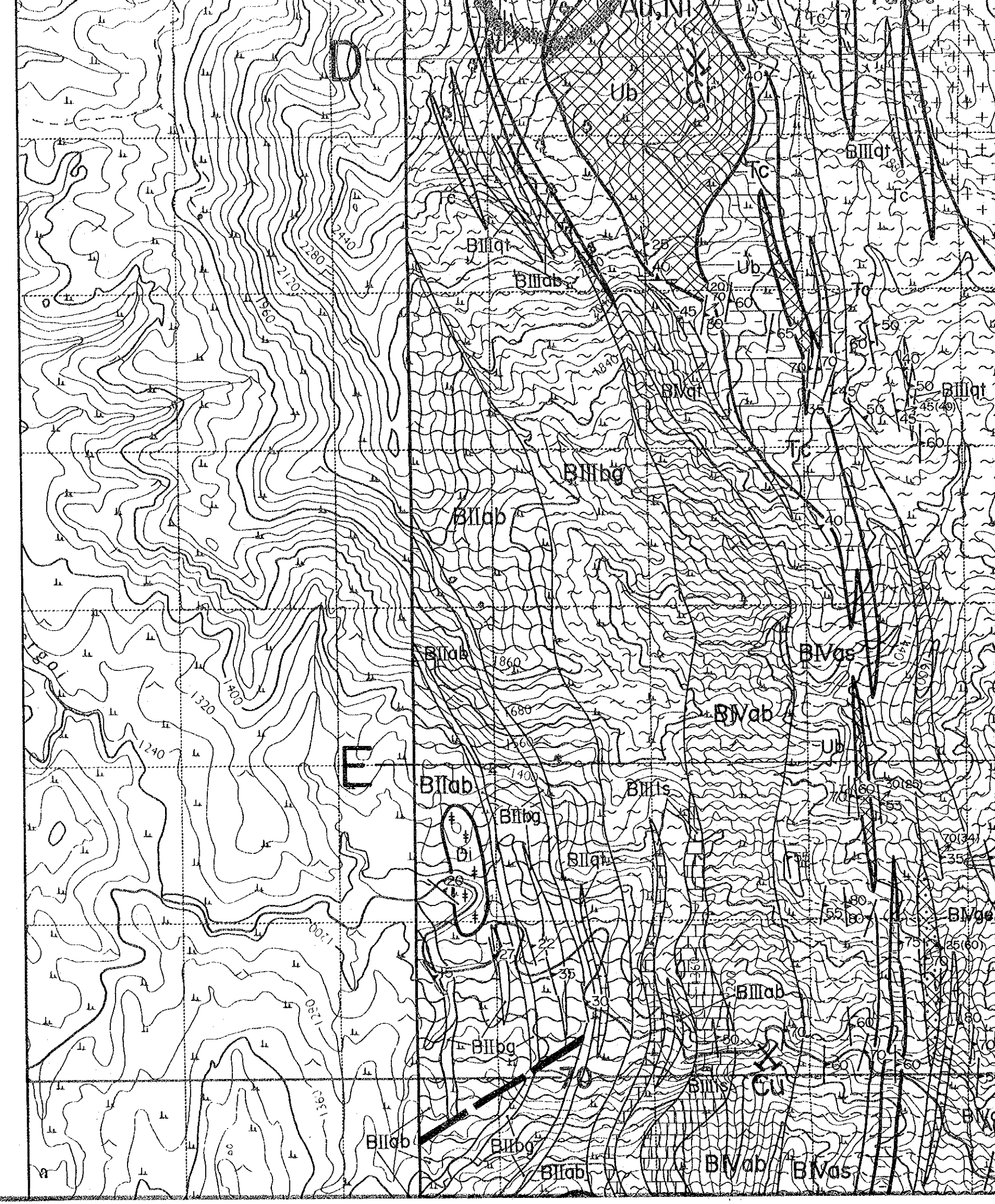
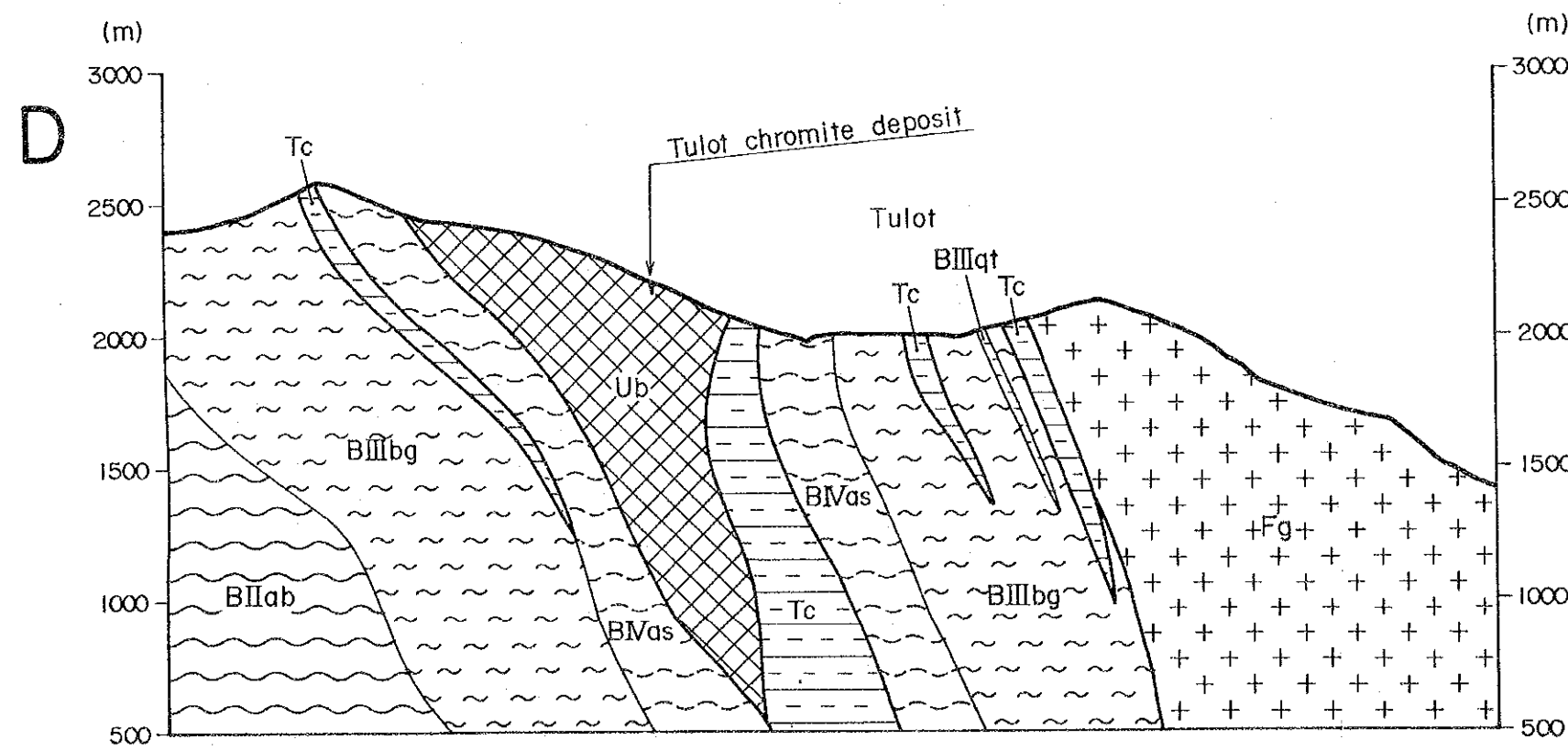
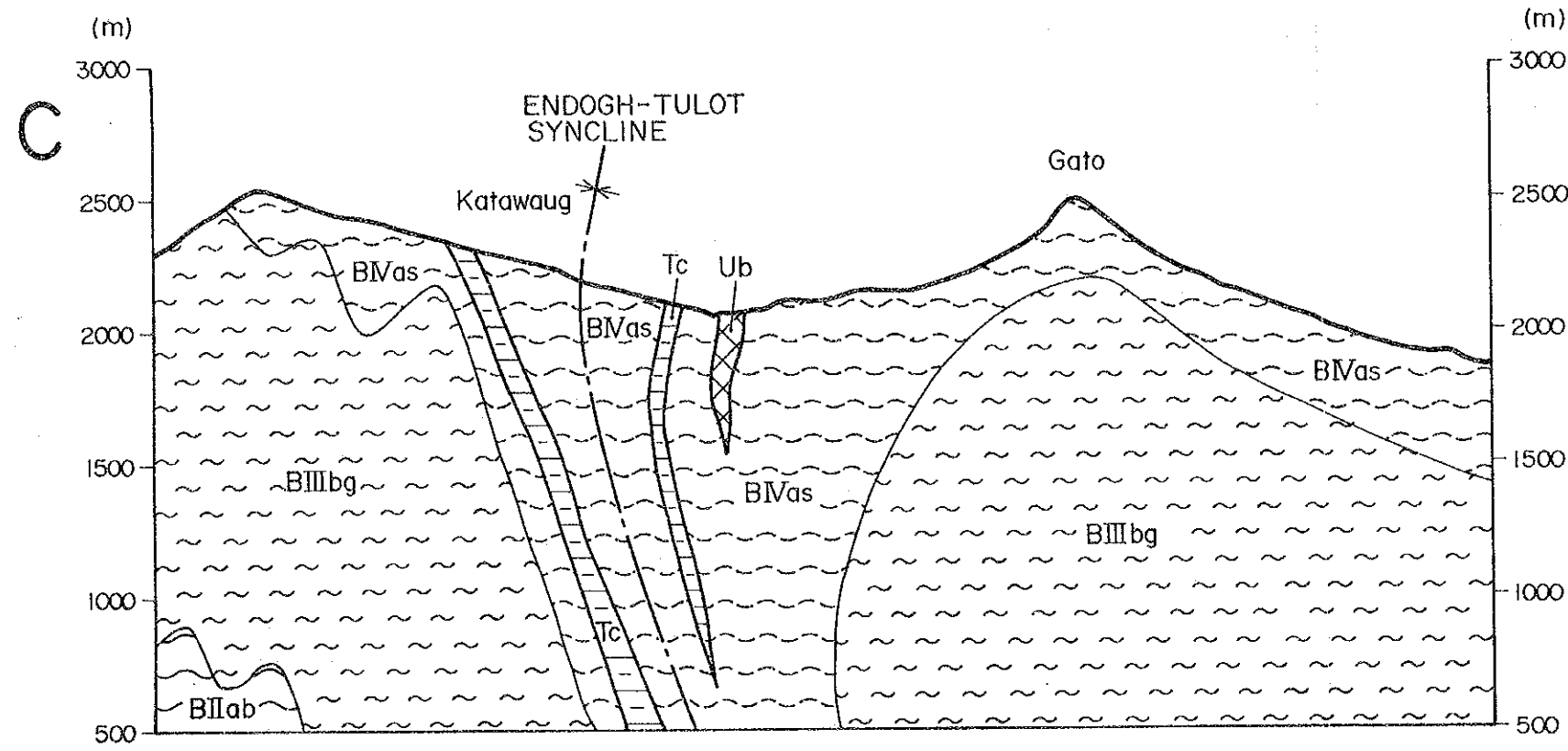
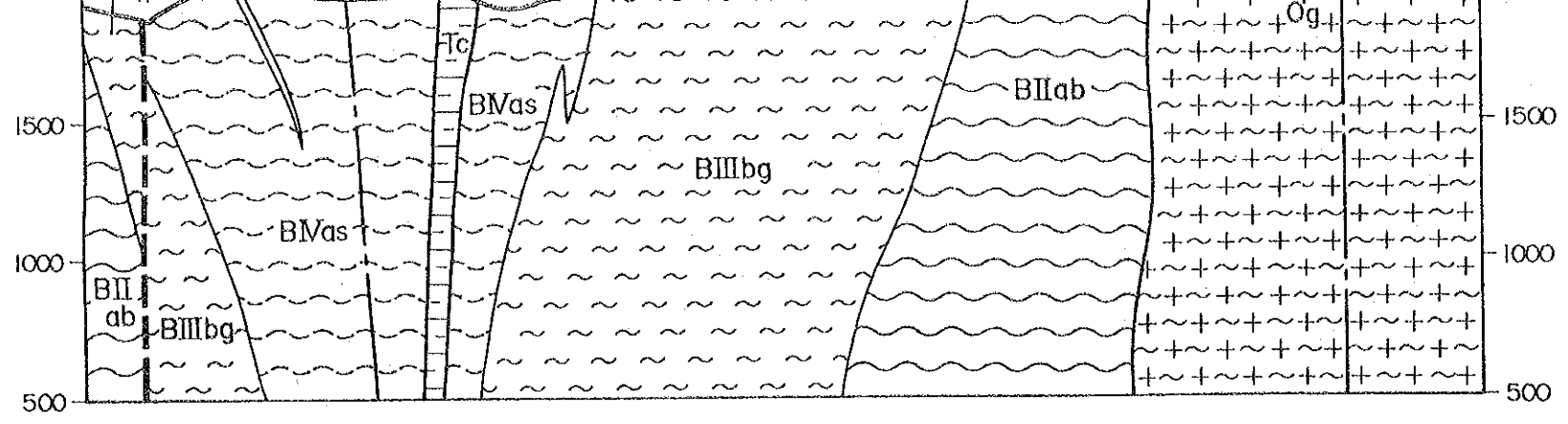
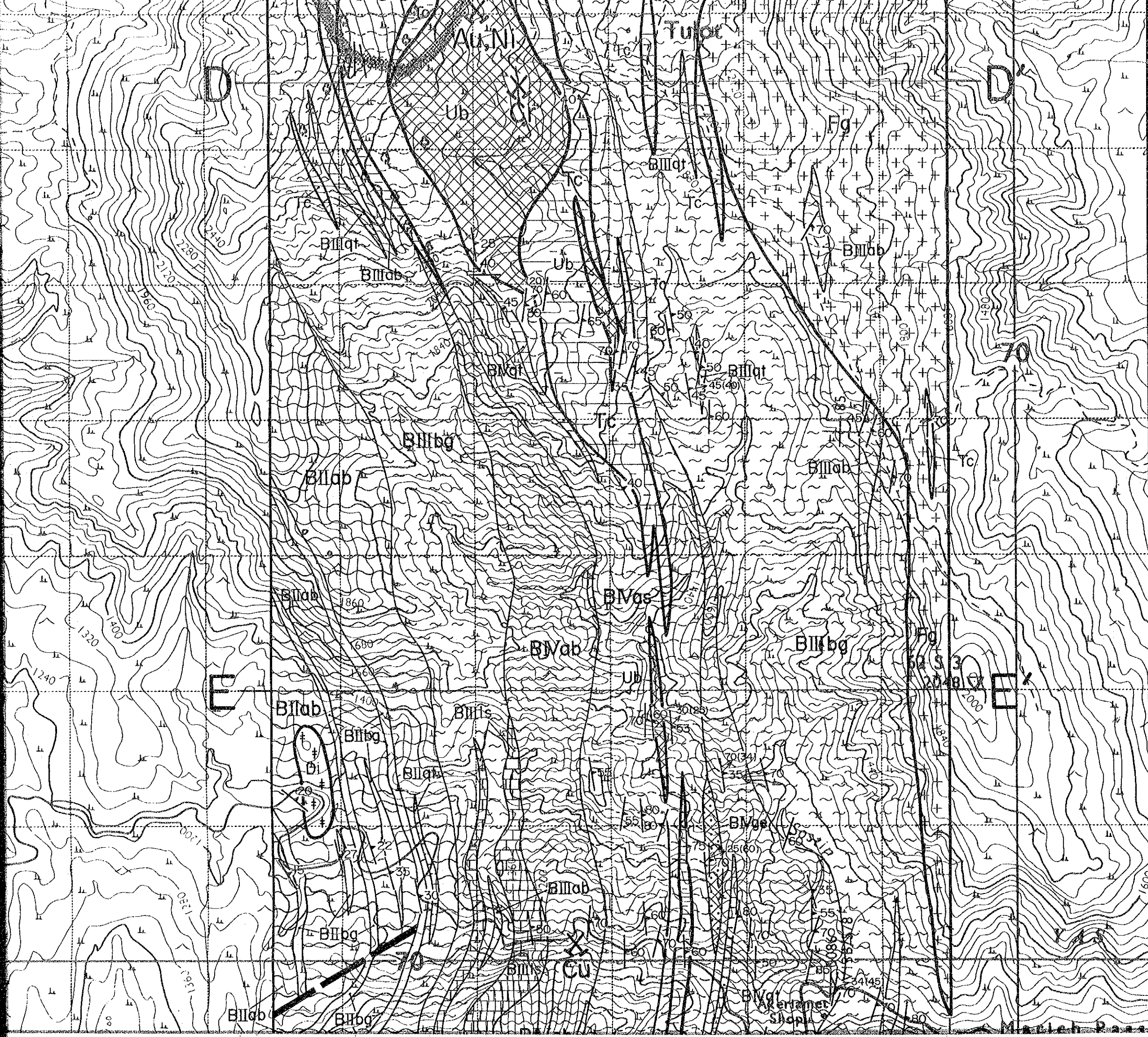


Basement System (Pre-Cambrian)

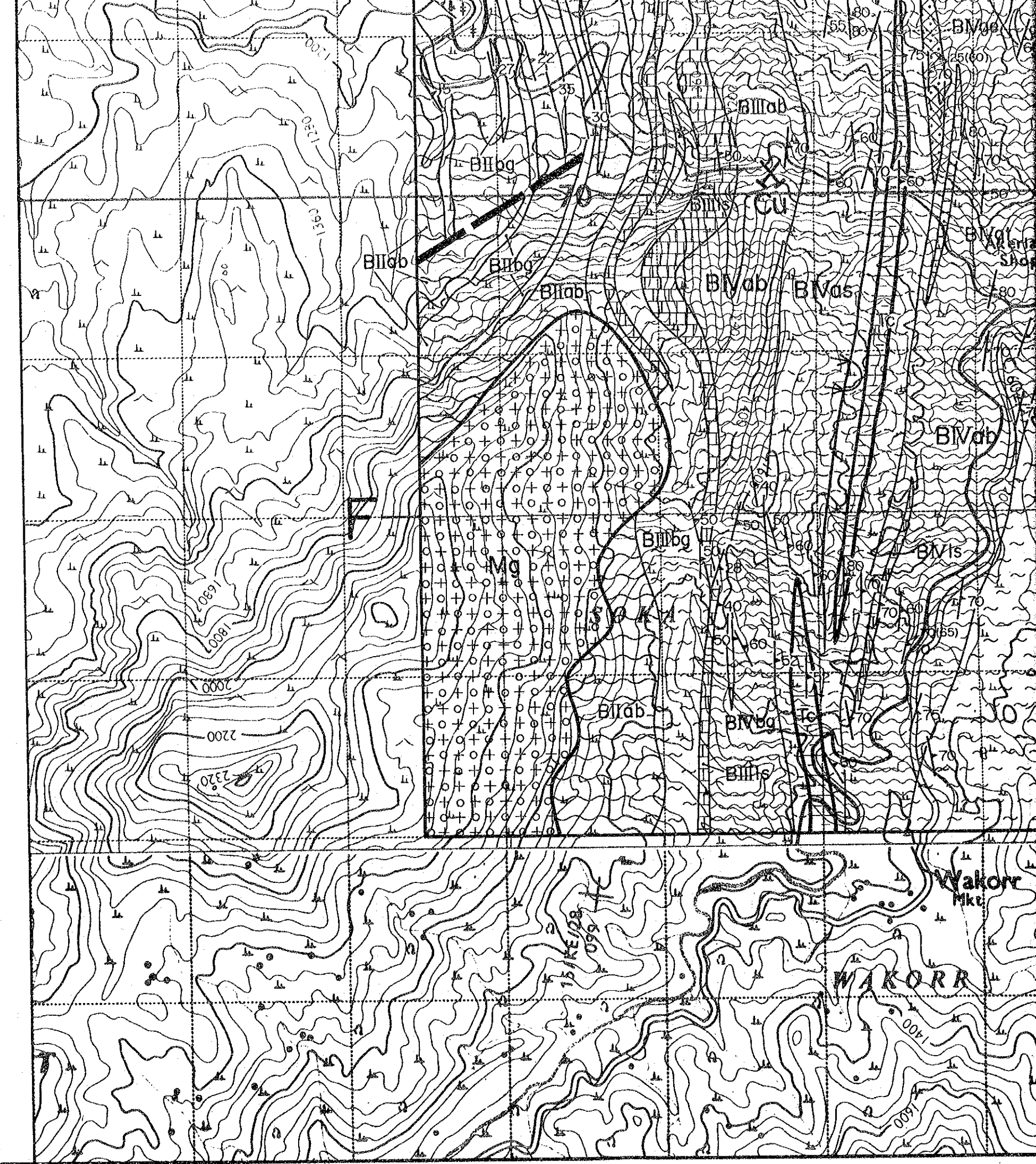
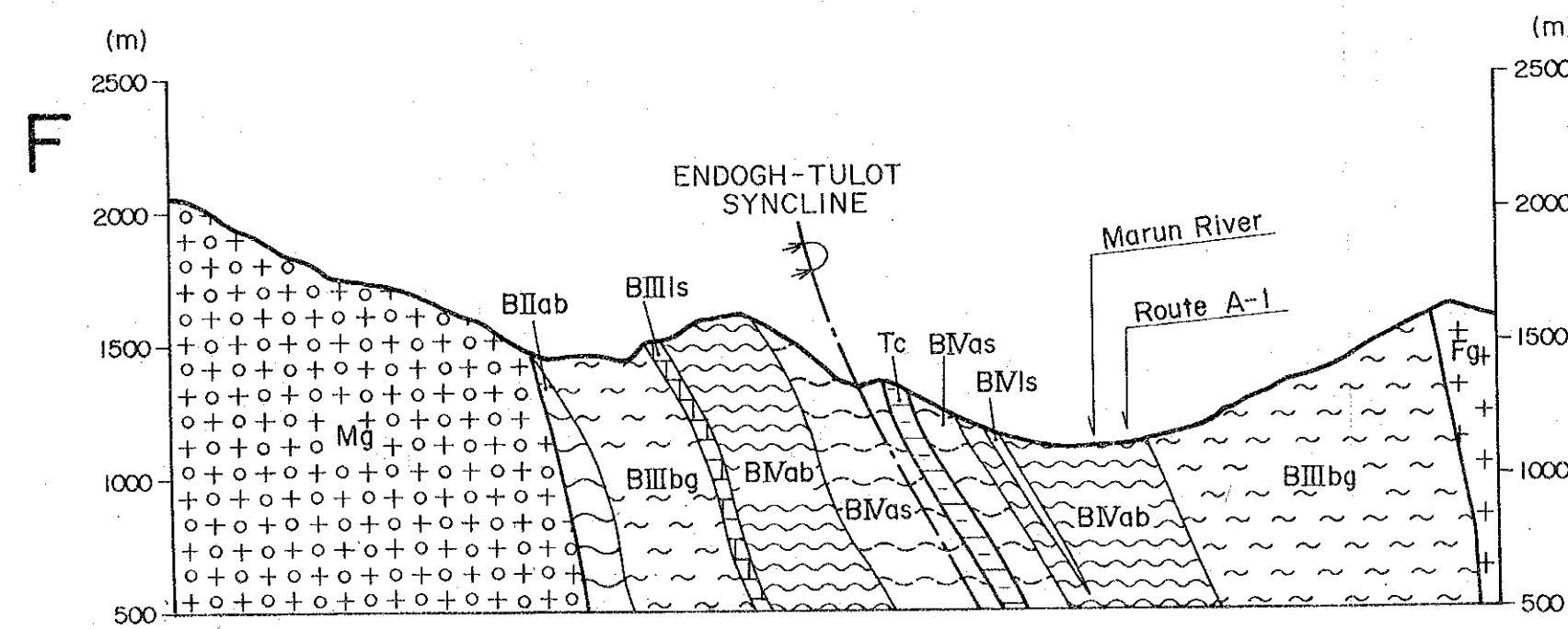
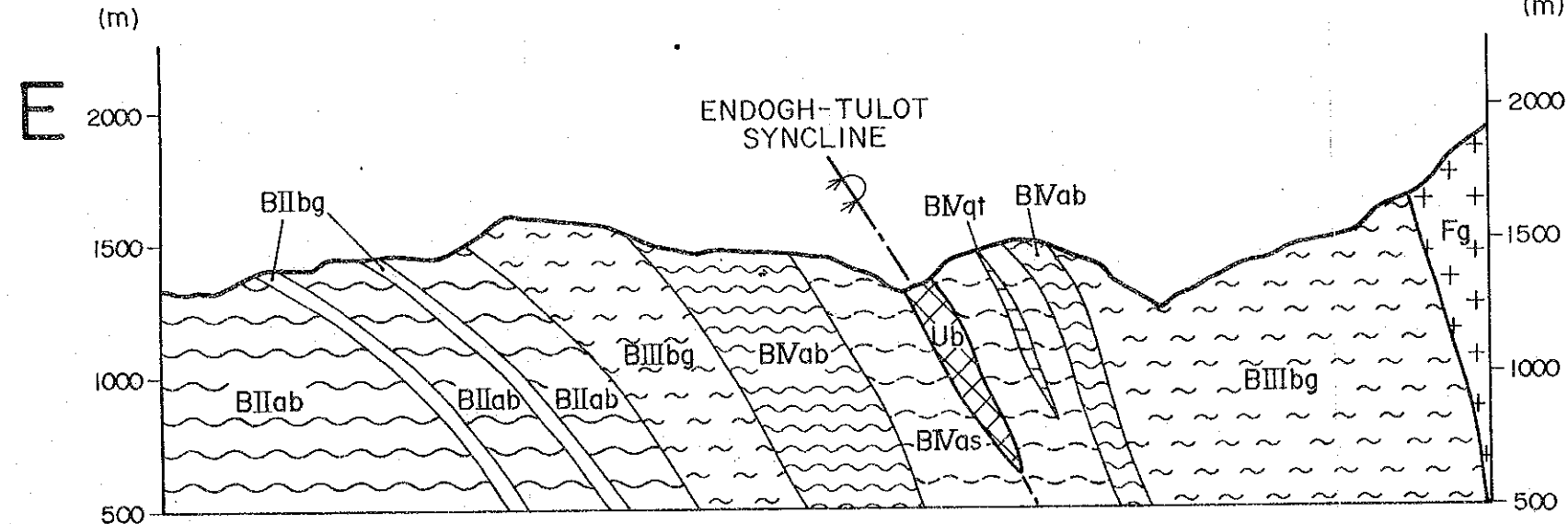
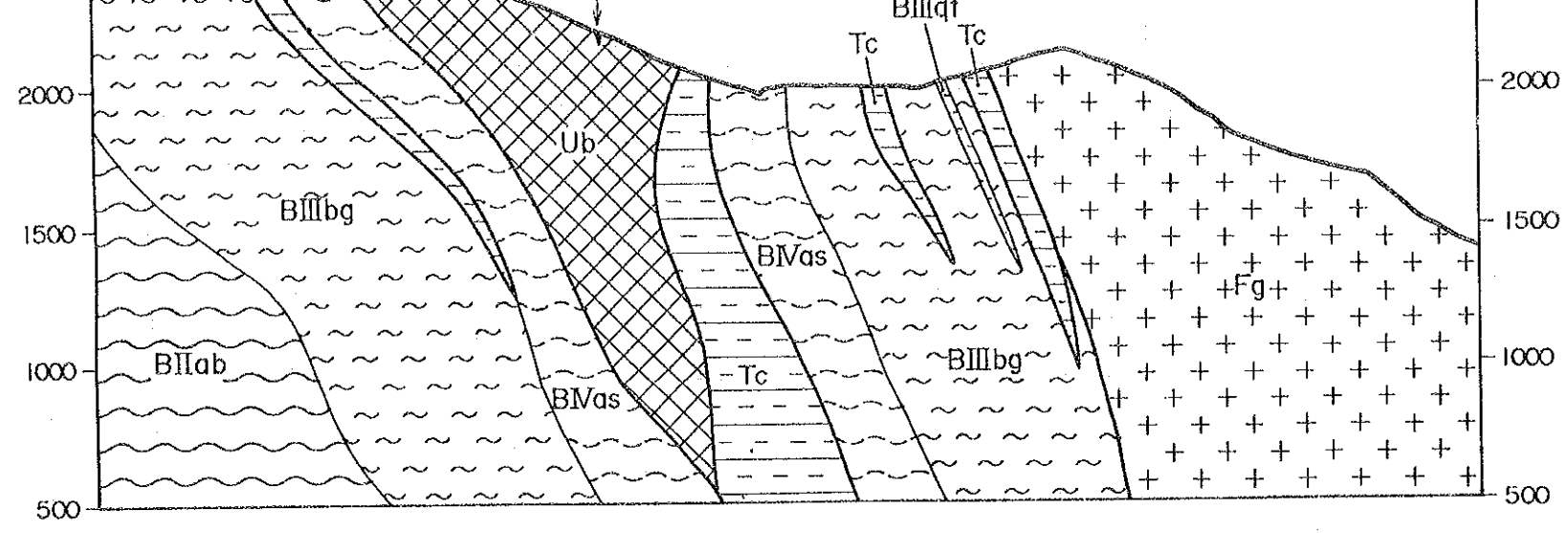
Basement IV	BIVbg		Biotite gneiss
	BIVls		Crystalline limestone
	BIVqt		Quartzite, Quartz schist
	BIVge		Garnet-enstatite porphyroblastic rock
Basement III	BIIIbg		Biotite gneiss with subordinate Hornblende-biotite gneiss, Amphibolite, Quartzite
	BIIIab		Amphibolite
	BIIIqt		Quartzite, Psammitic schist
Basement II	BIIIls		Crystalline limestone
	BIIab		Amphibolite, Hornblende gneiss with subordinate Biotite gneiss, Chlorite-actinolite schist
	BIIbg		Biotite gneiss
Intrusive Rocks	BIIqt		Quartzite, Psammitic schist
	Fg		Foliated Biotite-muscovite granite with subordinate Pegmatite, Aplite
	Mg		Migmatitic granite
	Og		Orthogneiss
	Di		Metadiorite
	Tc		Talc schist
	Ub		Serpentinite, Dunite, Peridotite
Gb		Metagabbro	

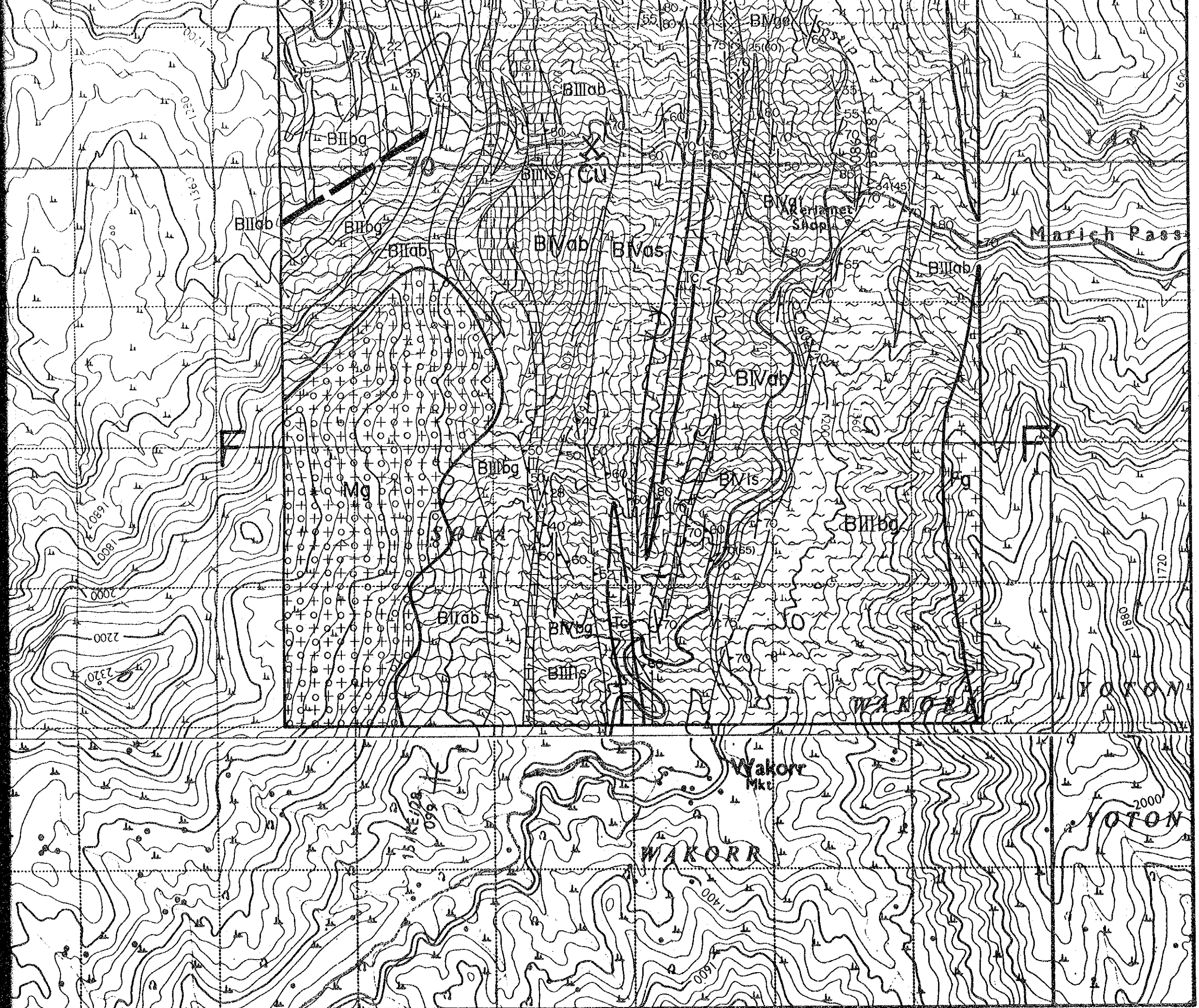
Strike and dip of foliation and lineation

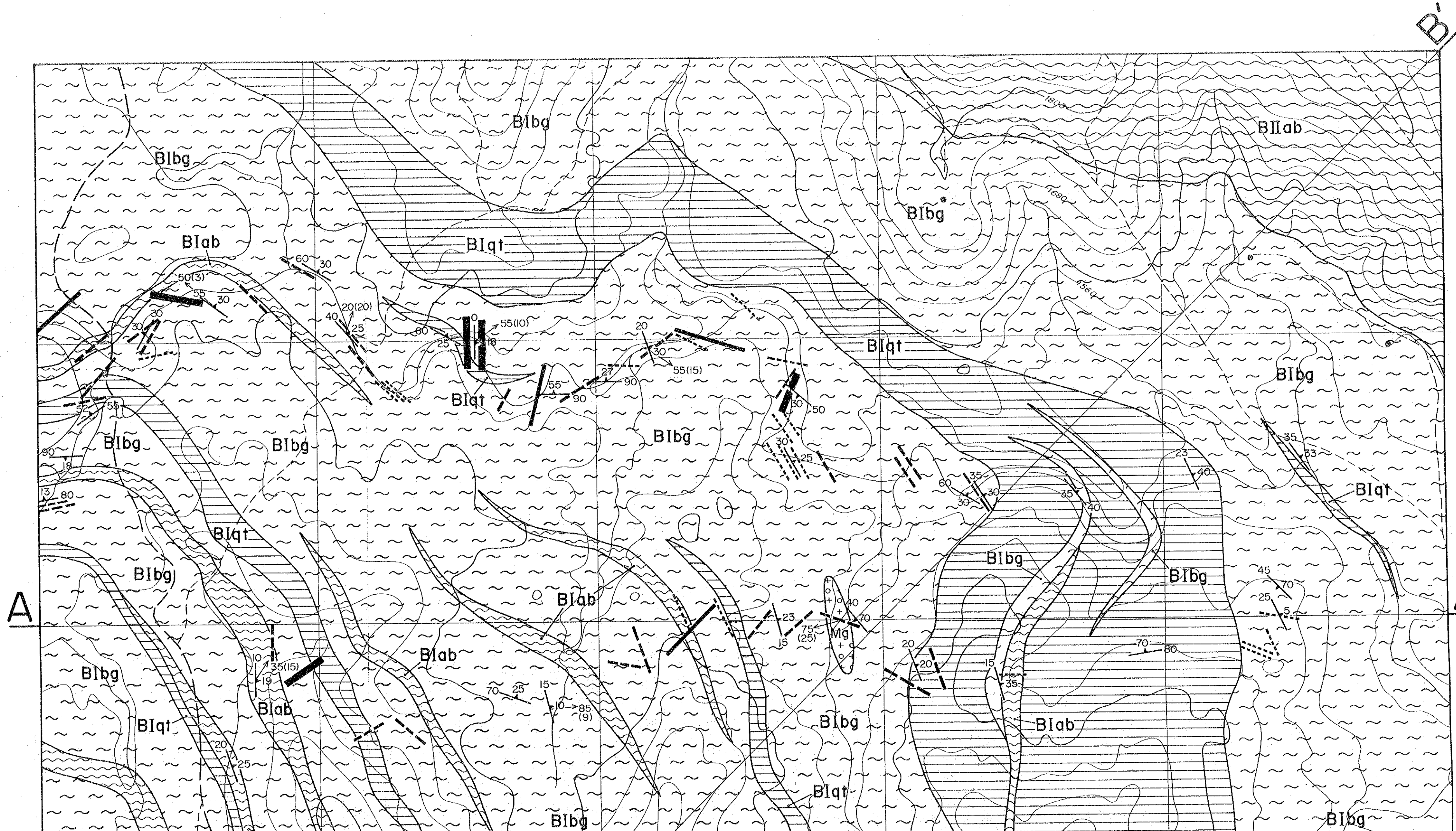




- Intrusive
- Di Metadiorite
 - Tc Talc schist
 - Ub Serpentinite, Dunite, Peridotite
 - Gb Metagabbro
- Strike and dip of foliation and lineation
 - Anticlinal axis
 - Synclinal axis
 - Overturned synclinal axis
 - Inferred fault
 - Cr Mineral occurrence
 - A—A' Position of profile



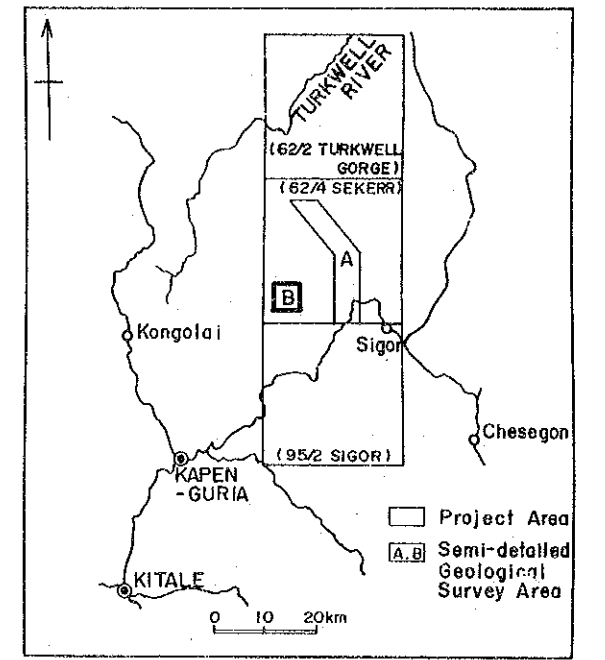
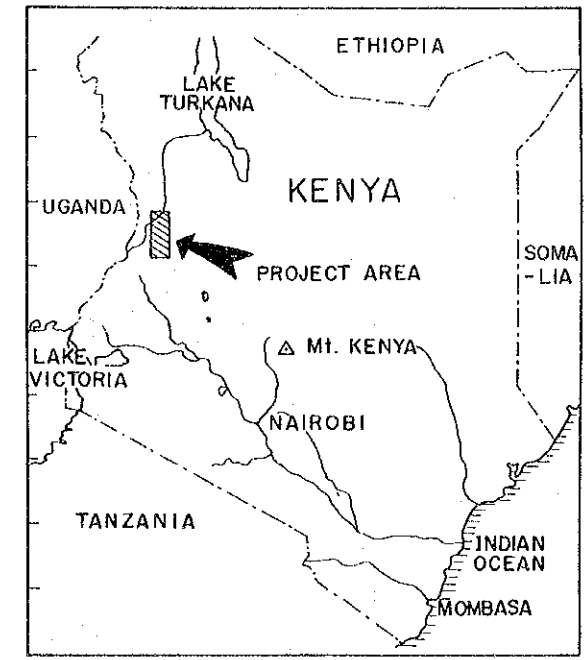




MINERAL EXPLORATION
IN
THE KERIO VALLEY DEVELOPMENT AUTHORITY AREA
(PHASE I)

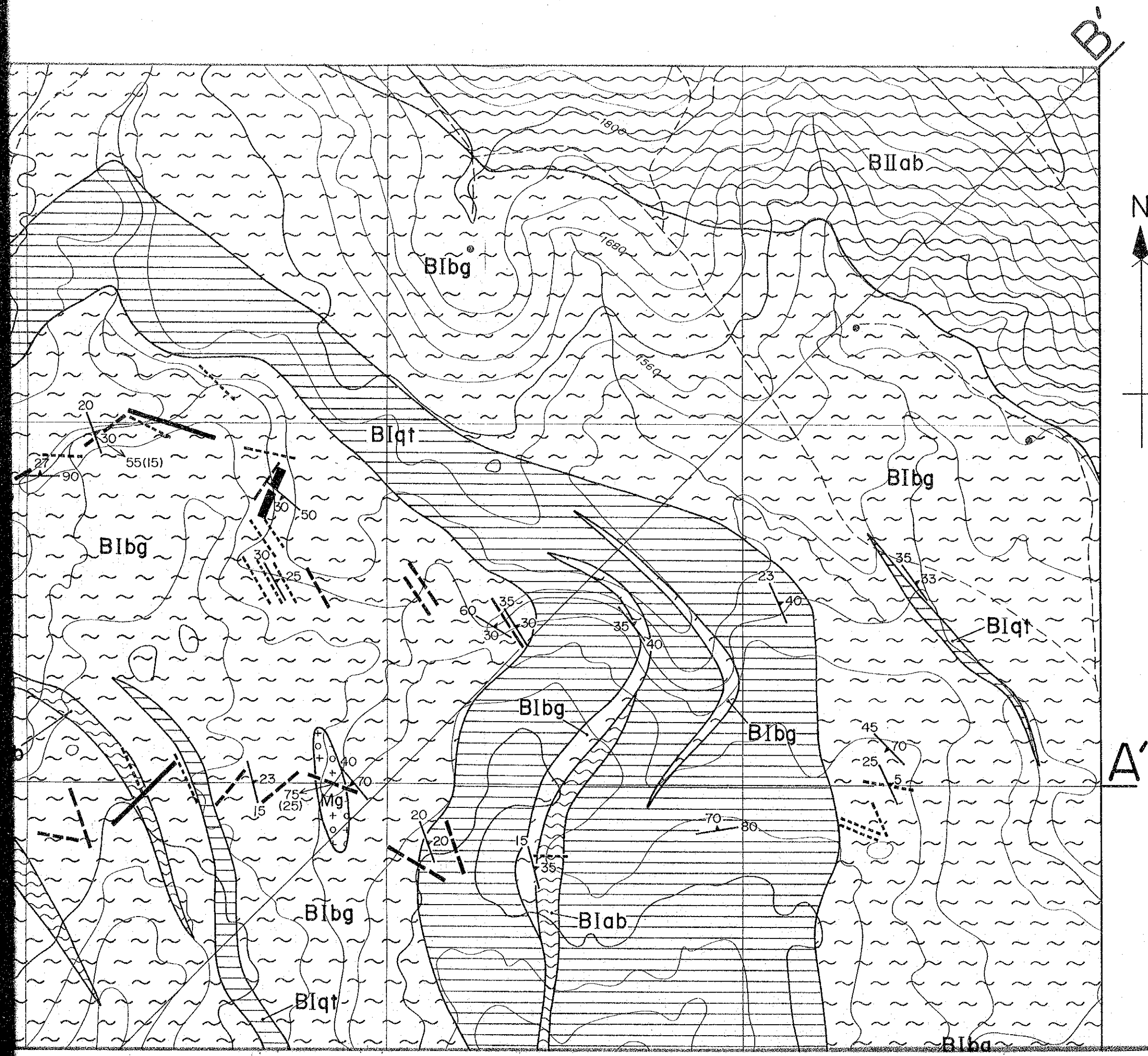
GEOLOGICAL MAP AND
PROFILES, SEMI-DETAILED
SURVEY AREA B

LOCATION INDEX



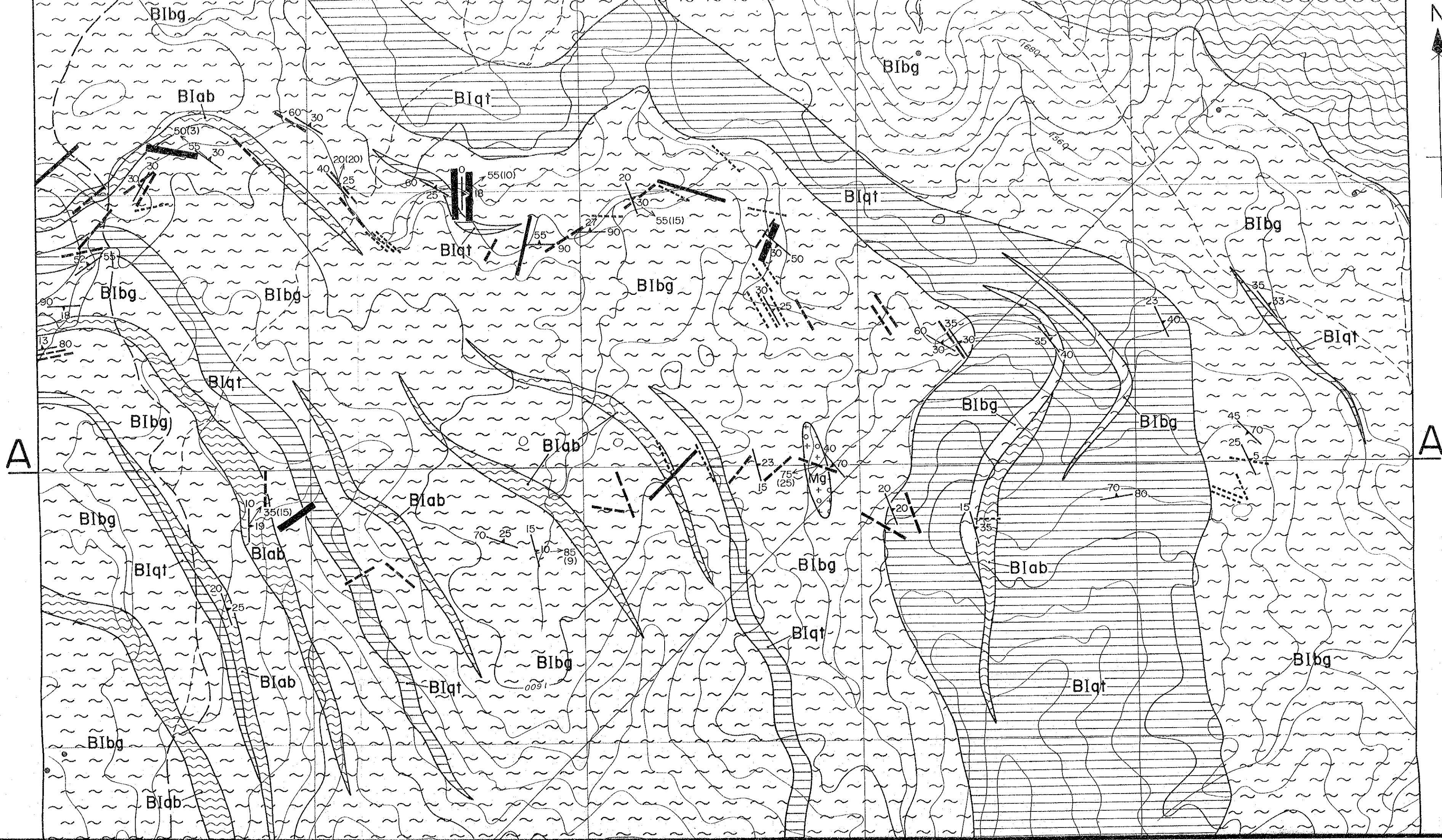
JAPAN INTERNATIONAL COOPERATION AGENCY
METAL MINING AGENCY OF JAPAN
March 1984

Scale 1:10,000
0 1 km



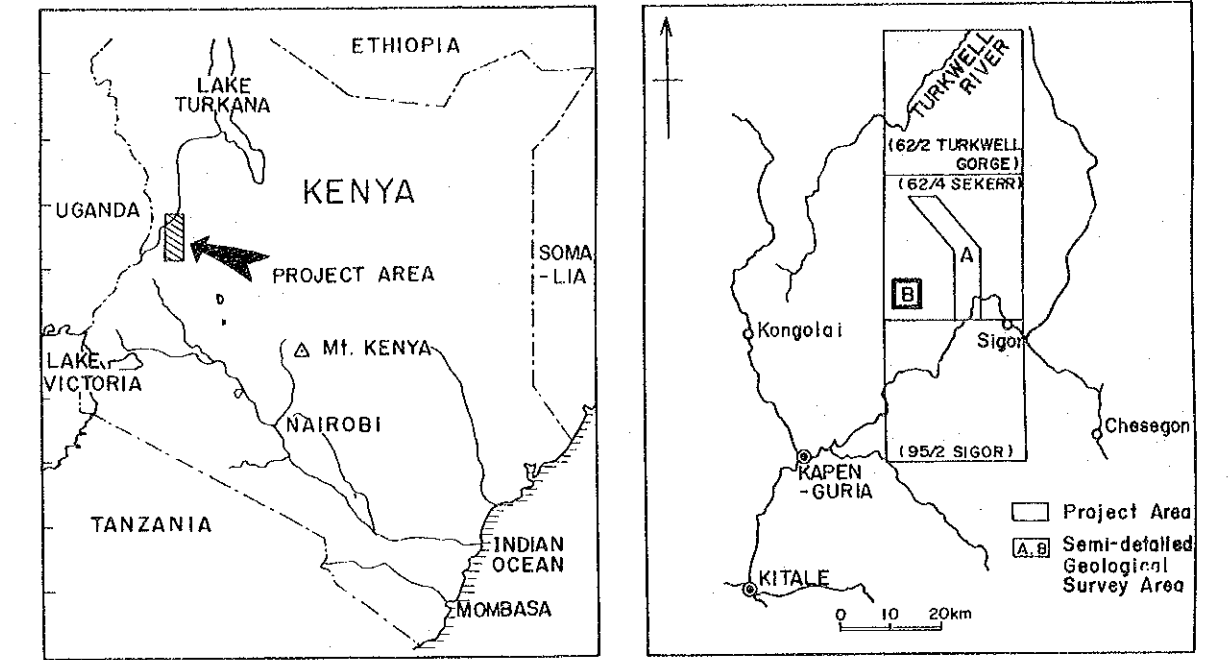
A'

B'

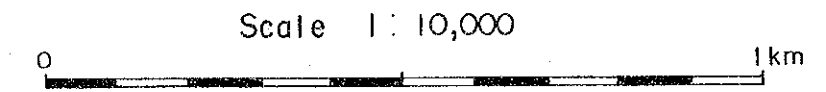


GEOLOGICAL MAP AND PROFILES, SEMI-DETAILED SURVEY AREA B

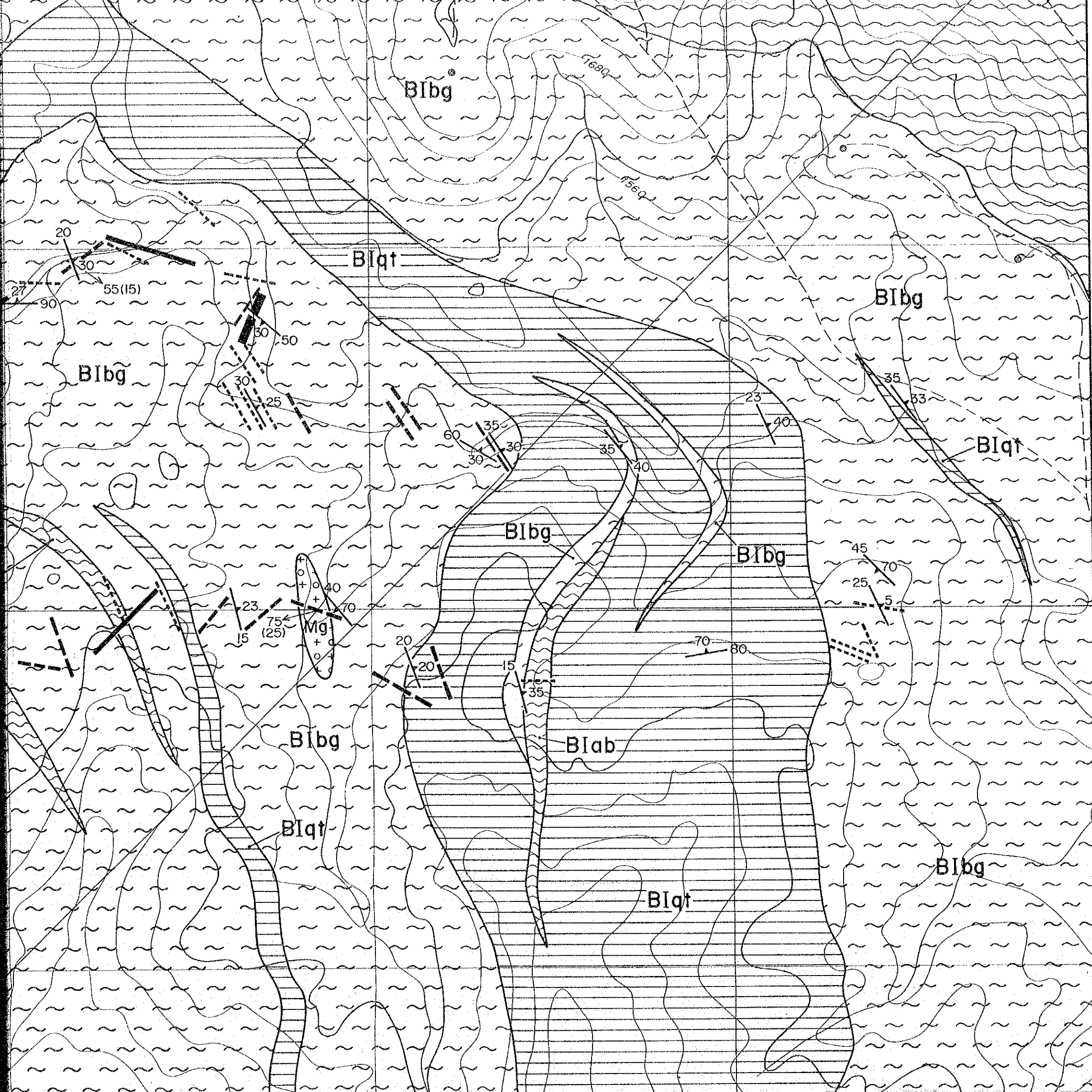
LOCATION INDEX

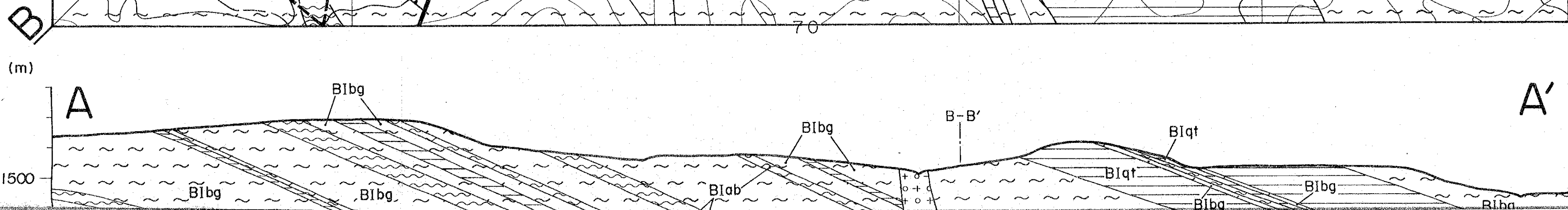
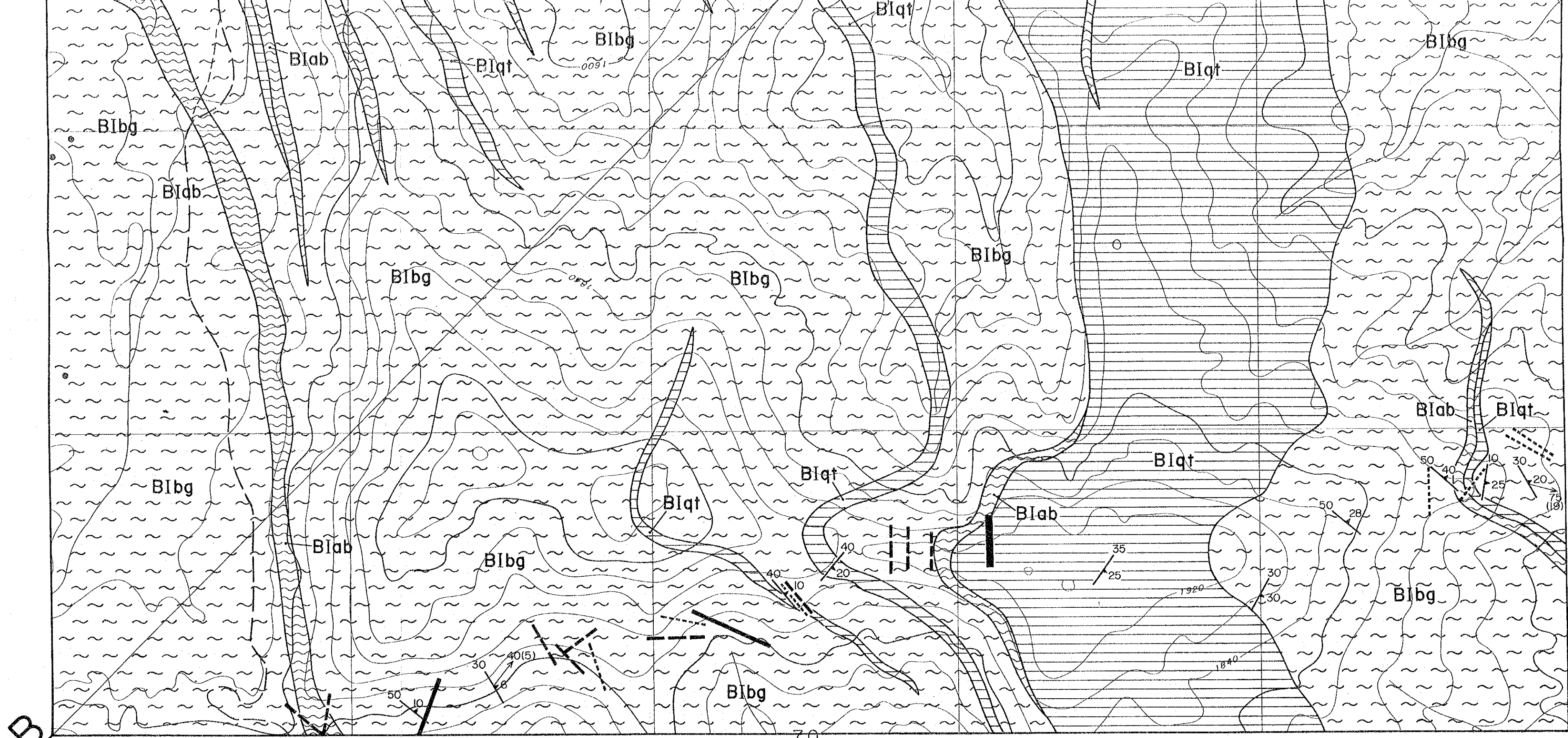


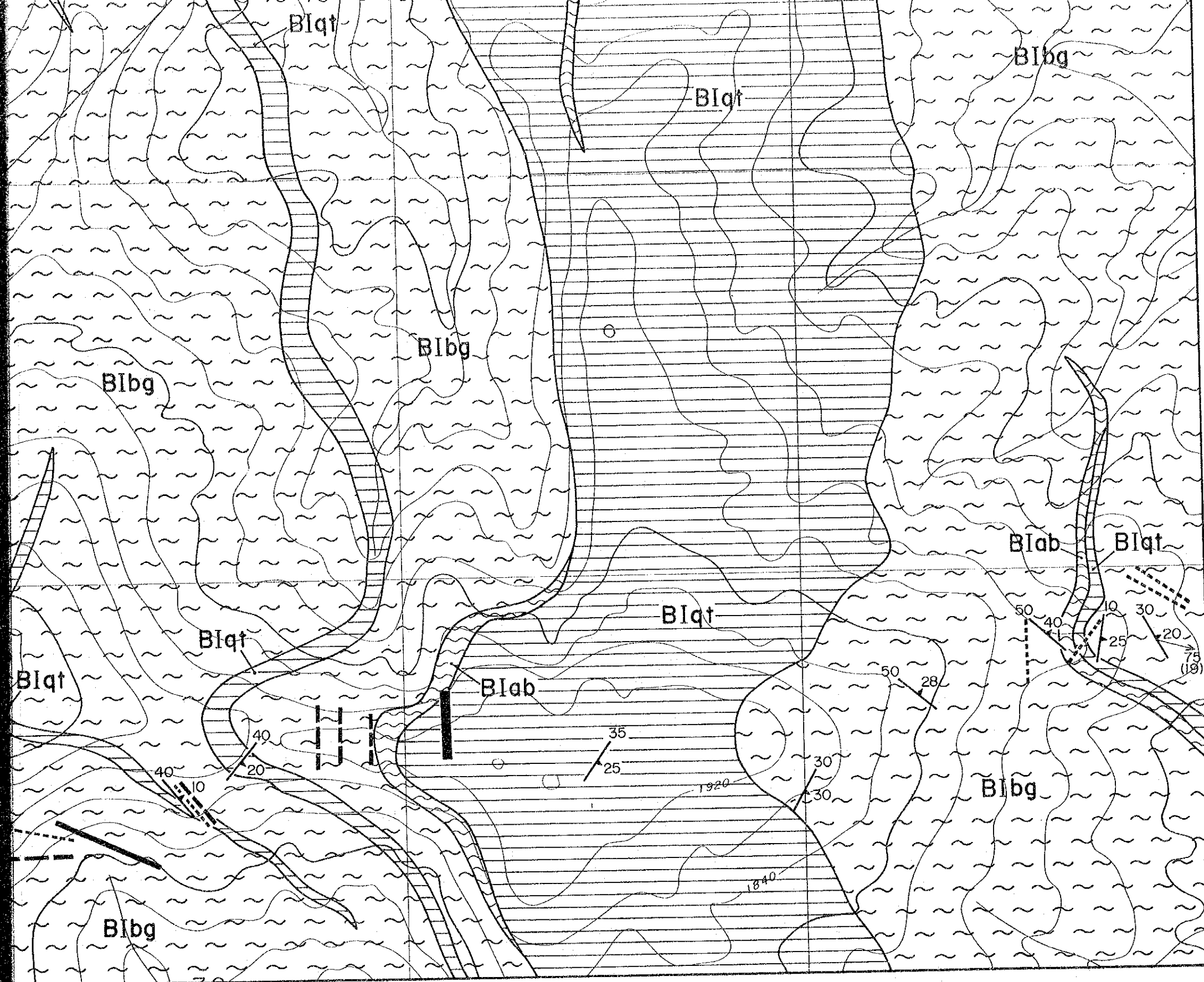
JAPAN INTERNATIONAL COOPERATION AGENCY
METAL MINING AGENCY OF JAPAN
March 1984



LEGEND

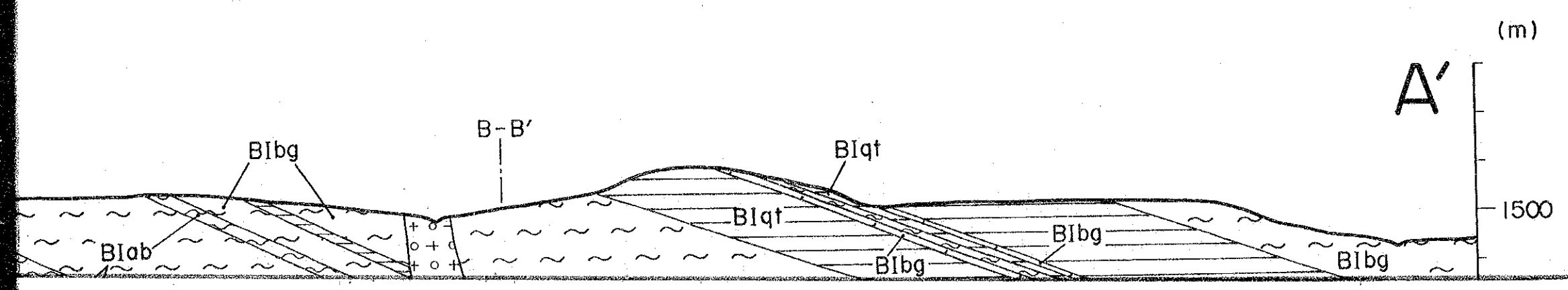


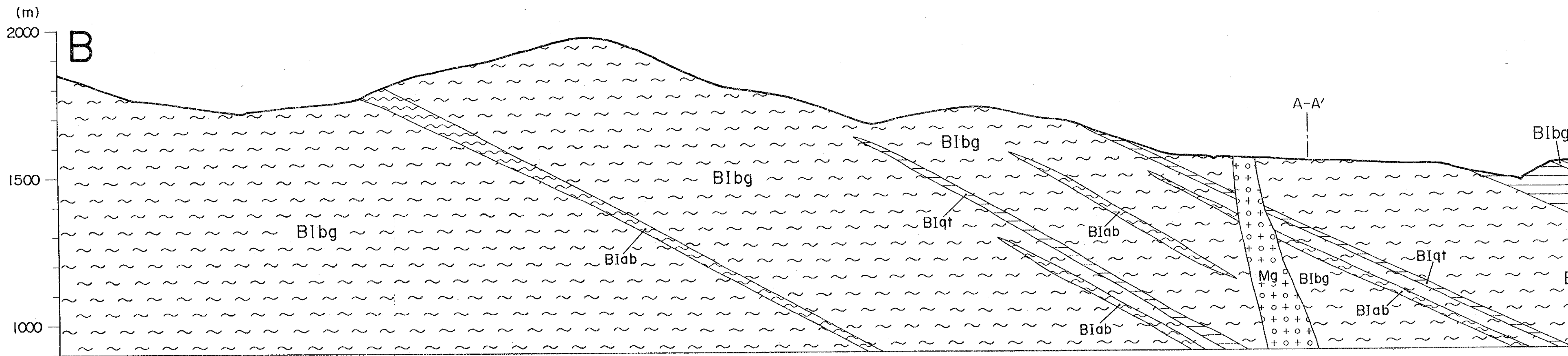
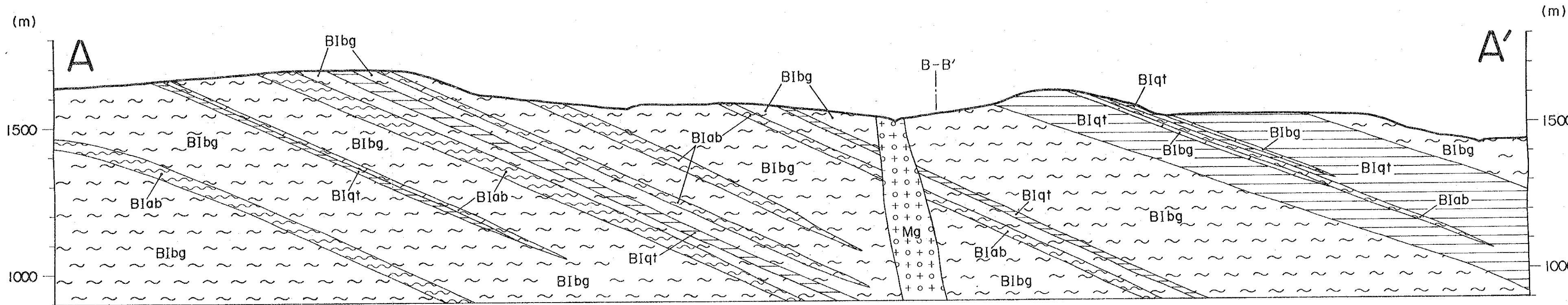
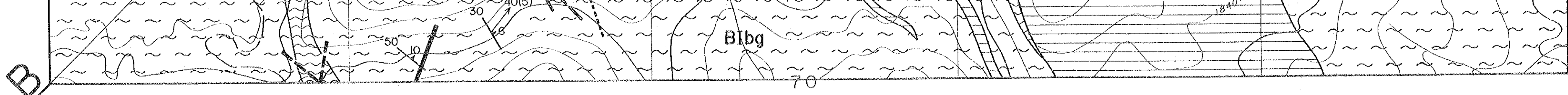


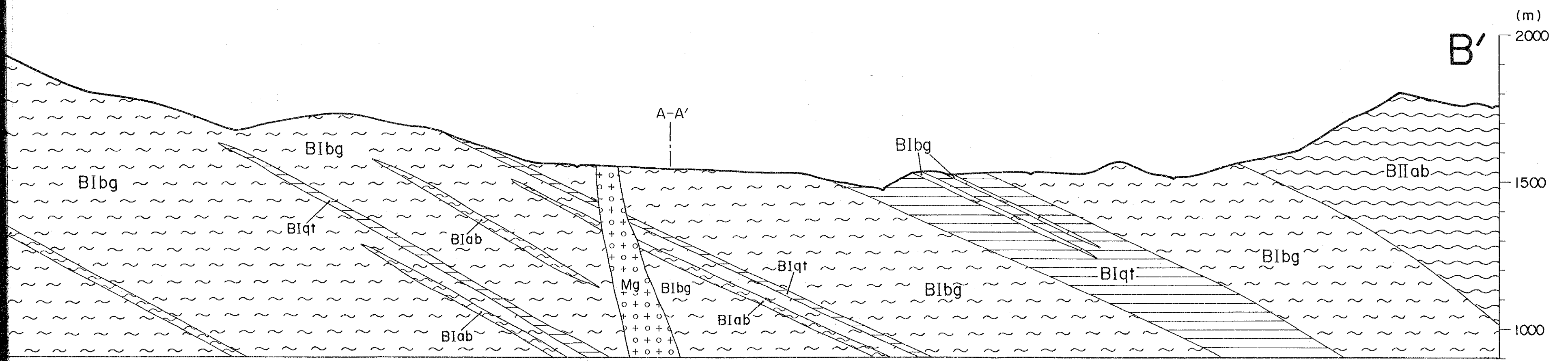
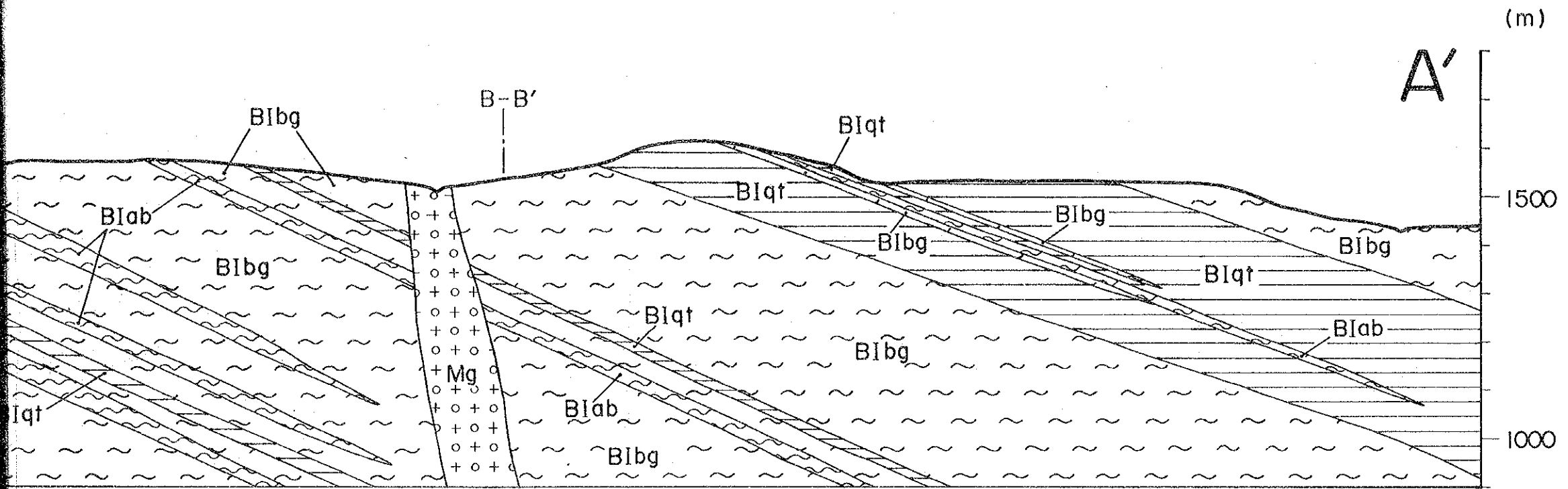
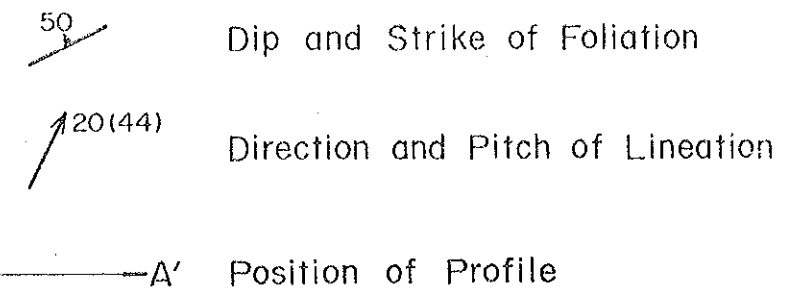
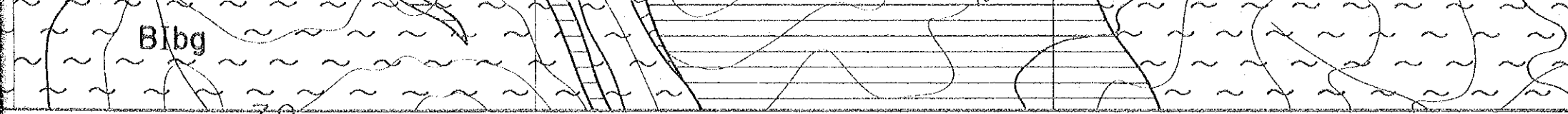


LEGEND

- Basement system (Pre-cambrian)
- Basement II
 - BIab Amphibolite, Hornblende gneiss
 - BIqt Quartzite, Muscovite Quartzite
 - Basement I
 - BIab Amphibolite, Hornblende gneiss
 - BIbg Biotite gneiss
- Migmatite
- Mg
- Intrusive rock
- $10\text{ m} \leq T < 15\text{ m}$
 - $5\text{ m} \leq T < 10\text{ m}$
 - $1\text{ m} \leq T < 5\text{ m}$
 - $T < 1\text{ m}$
- Pegmatite (T: Thickness)
- Dip and Strike of Foliation
- Direction and Pitch of Lineation
- A—A' Position of Profile



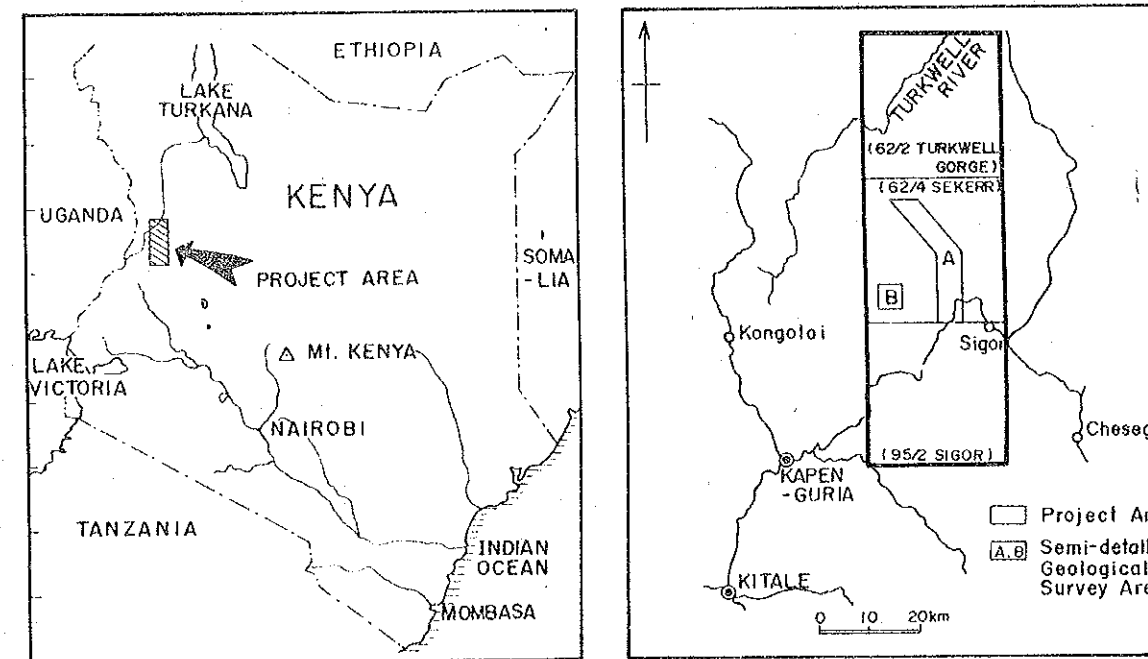




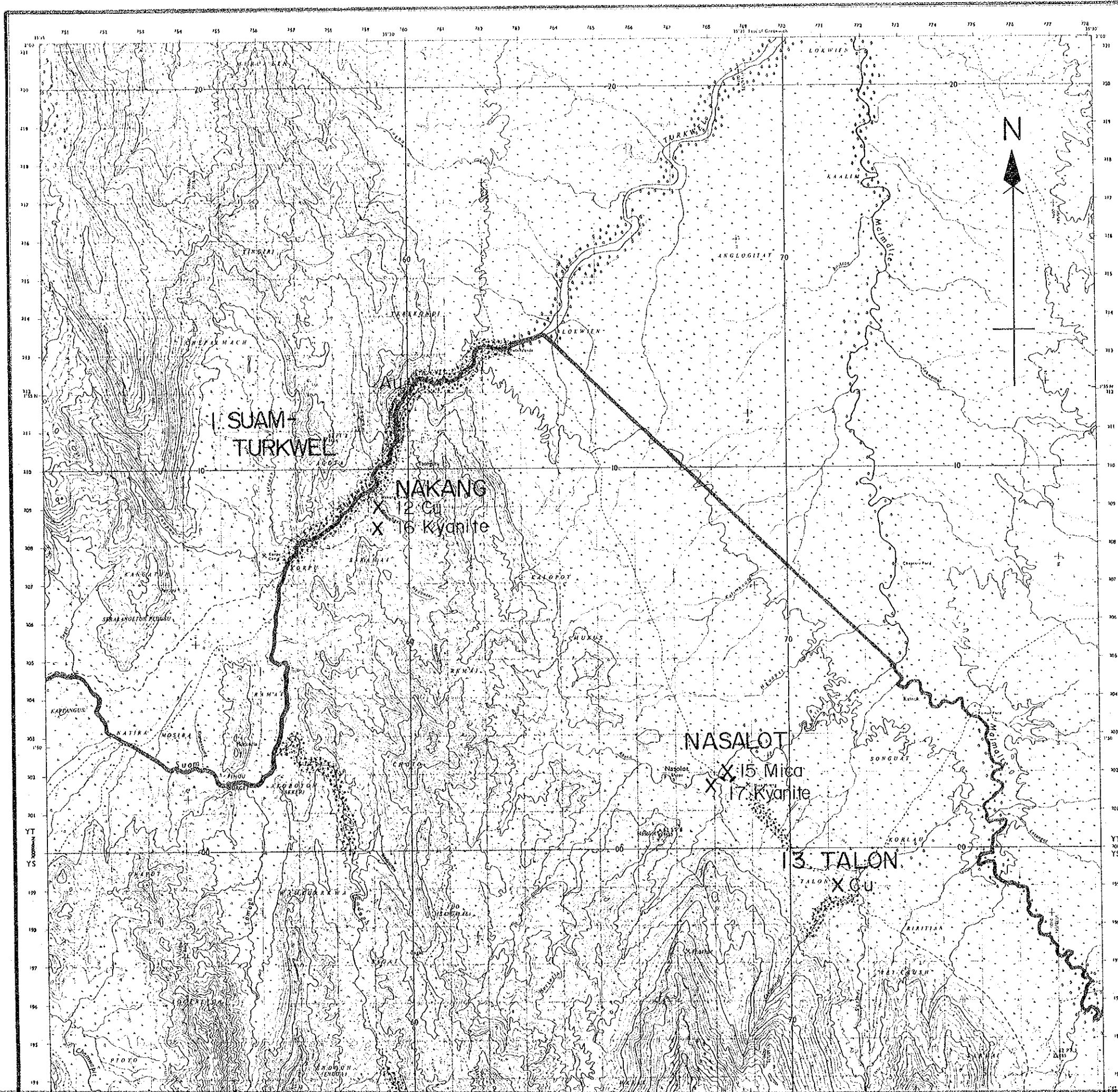
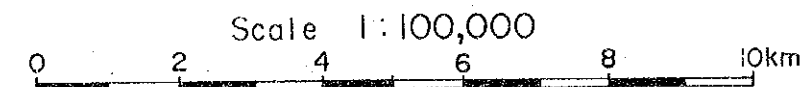
MINERAL EXPLORATION
IN
THE KERIO VALLEY DEVELOPMENT AUTHORITY AREA
(PHASE I)

MAP SHOWING
MINERAL OCCURRENCE

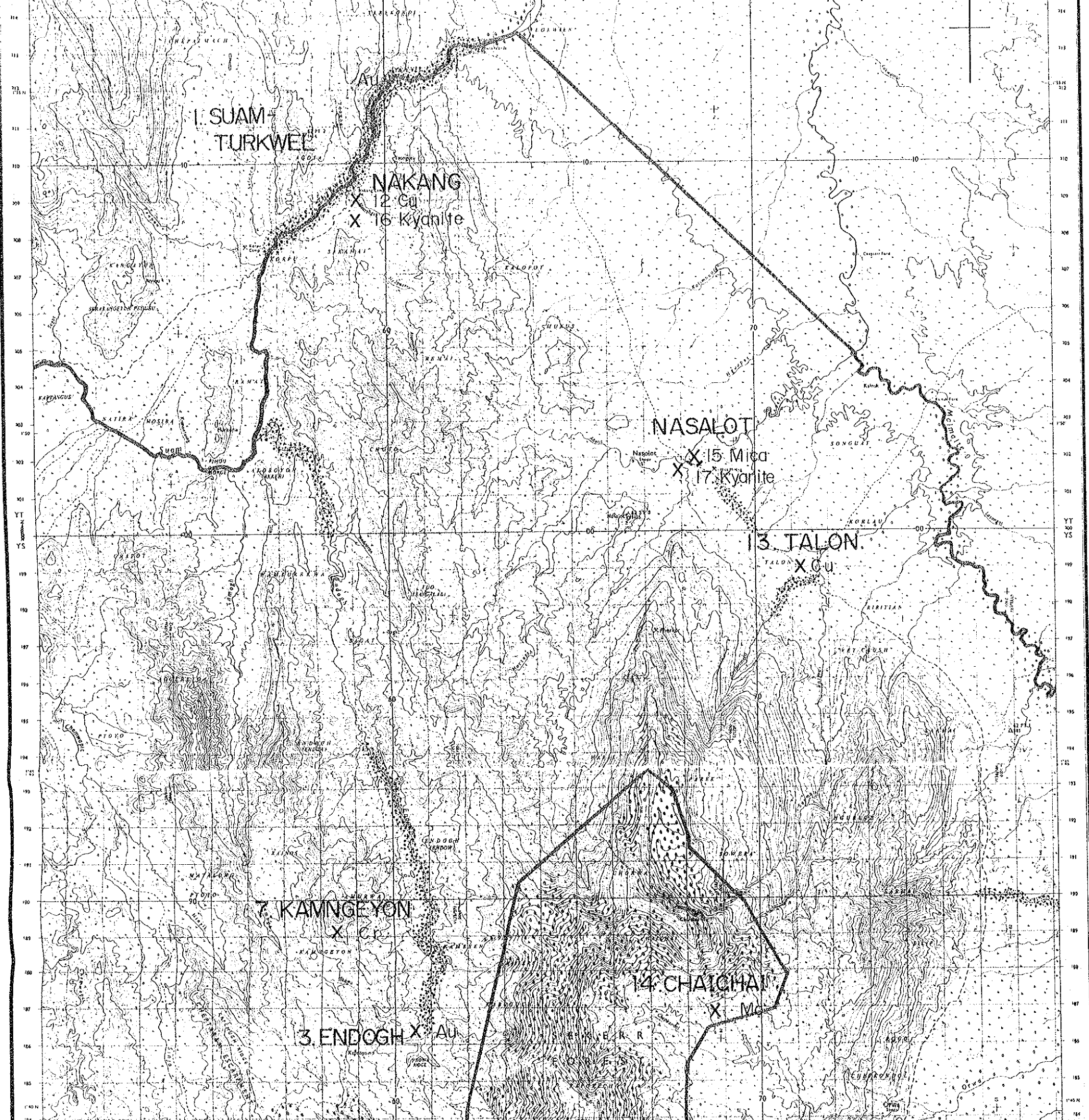
LOCATION INDEX



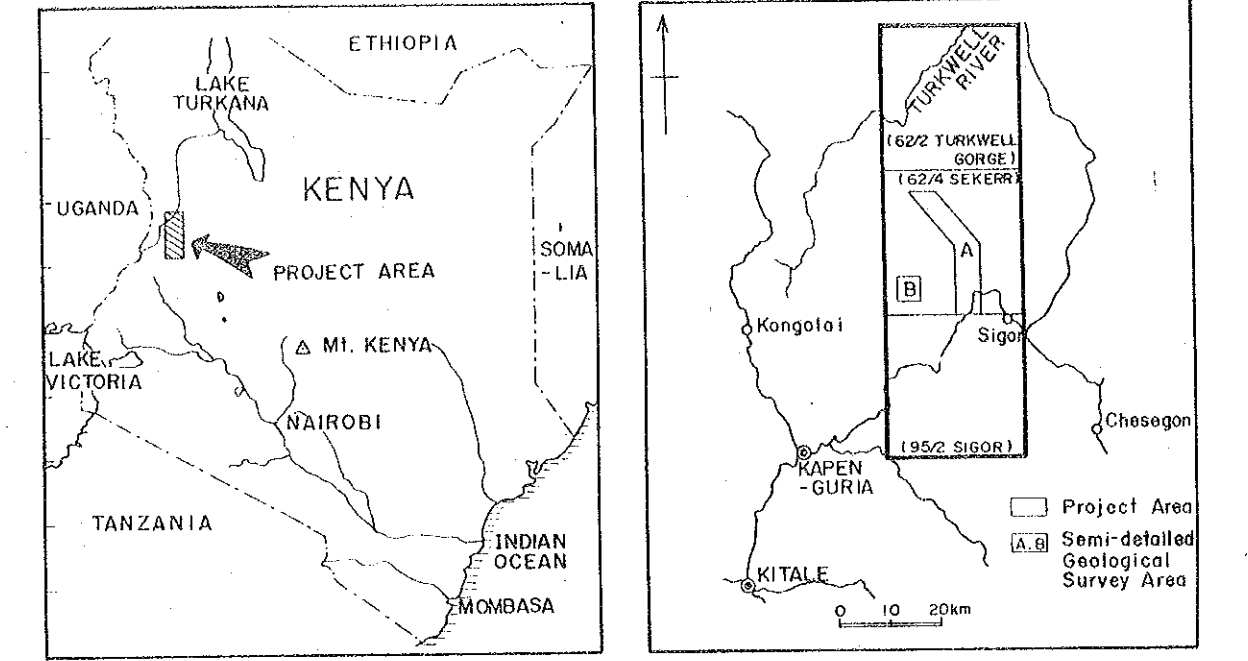
JAPAN INTERNATIONAL COOPERATION AGENCY
METAL MINING AGENCY OF JAPAN
March 1984



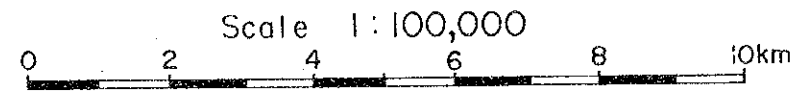
MINERAL OCCURRENCE



LOCATION INDEX



JAPAN INTERNATIONAL COOPERATION AGENCY
 METAL MINING AGENCY OF JAPAN
 March 1984



LEGEND

Au panning location