

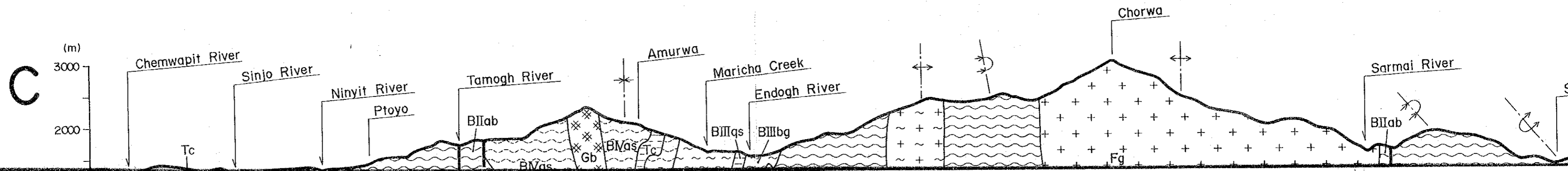
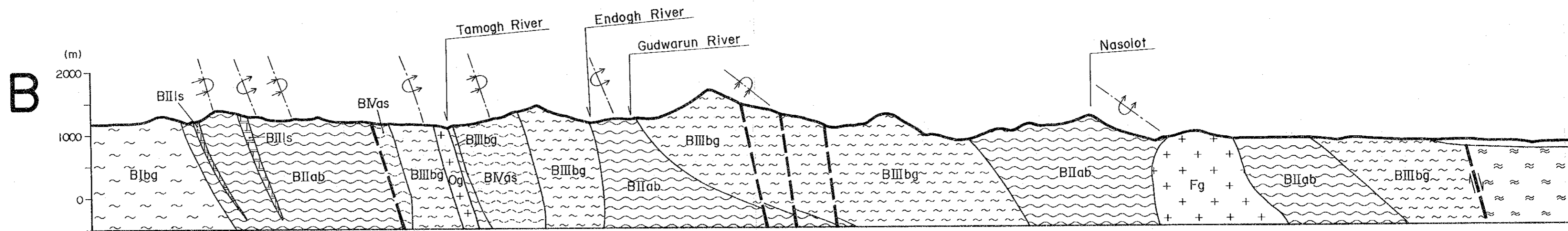
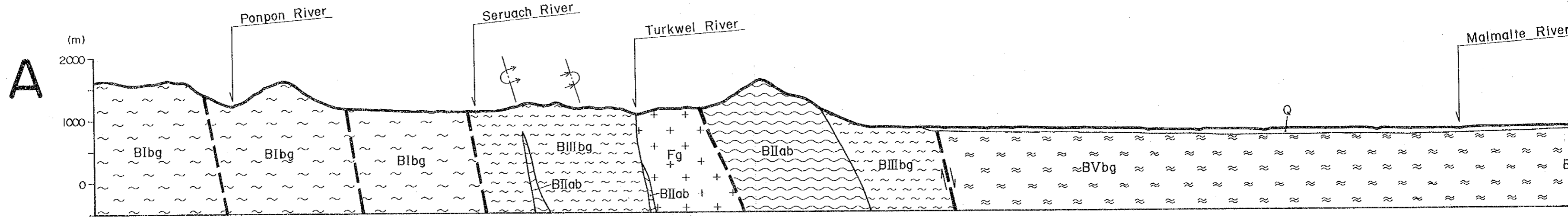
G'

151
150
149
148
147
146
145
144
143
142
141
140
139
1°15'N
35°25' 769
35°30' 778

762 763 764 765 766 767 768 770 771 772 773 774 775 776 777 778

Quaternary	Q	Soil, Sand and Gravel	
Basement System (Pre-Cambrian)	Basement V	BVbg	Biotite gneiss
		BVIs	Crystalline limestone
		BVAs	Actinolite-Chlorite schist, Tremolite schist, Chlorite schist
		BVab	Amphibolite, Hornblende gneiss
	Basement III	BIIIms	Biotite-Muscovite and Biotite-Muscovite-Hornblende schist
		BIIIbg	Biotite gneiss with subordinate Hornblende Biotite gneiss, Amphibolite
		BIIIqs	Quartz Schist, Quartzite
		BIIIIs	Crystalline limestone
	Basement II	BIIpg	Porphyroblastic gneiss
		BIIab	Amphibolite, Hornblende gneiss with subordinate Biotite gneiss
BIIqt		Quartzite, Quartz schist	
BIIIs		Crystalline limestone	
Basement I	BIbg	Biotite gneiss, Hornblende-Biotite gneiss with subordinate Hornblende gneiss	
	BIqt	Quartzite with subordinate Amphibolite	
Intrusive rocks	Fg	Foliated Granite	
	Og	Granitoid Orthogneiss	
	Mg	Migmatitic type Granite, Migmatite	
	Di	Biotite-Hornblende Diorite, Epi Diorite, Meta Diorite	
	Gb	Gabbro, Meta Gabbro	
	Ub	Ultrabasic rock, Serpentinite	
	Tc	Talc schist	

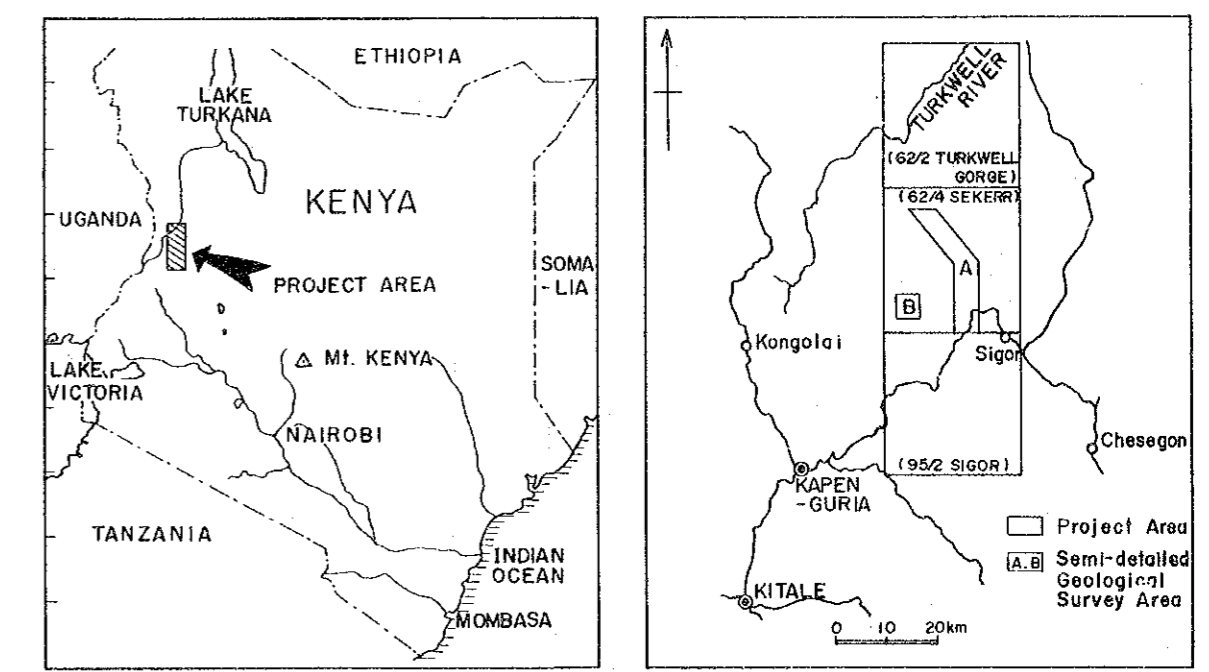
	Anticlinal axis		Inferred fault
	Overturned Anticlinal axis		Concealed fault
	Synclinal axis		Closed mine
	Overturned Synclinal axis		Ore showing
	Dip and strike of foliation		Position of Profile
	Direction and pitch of lineation		



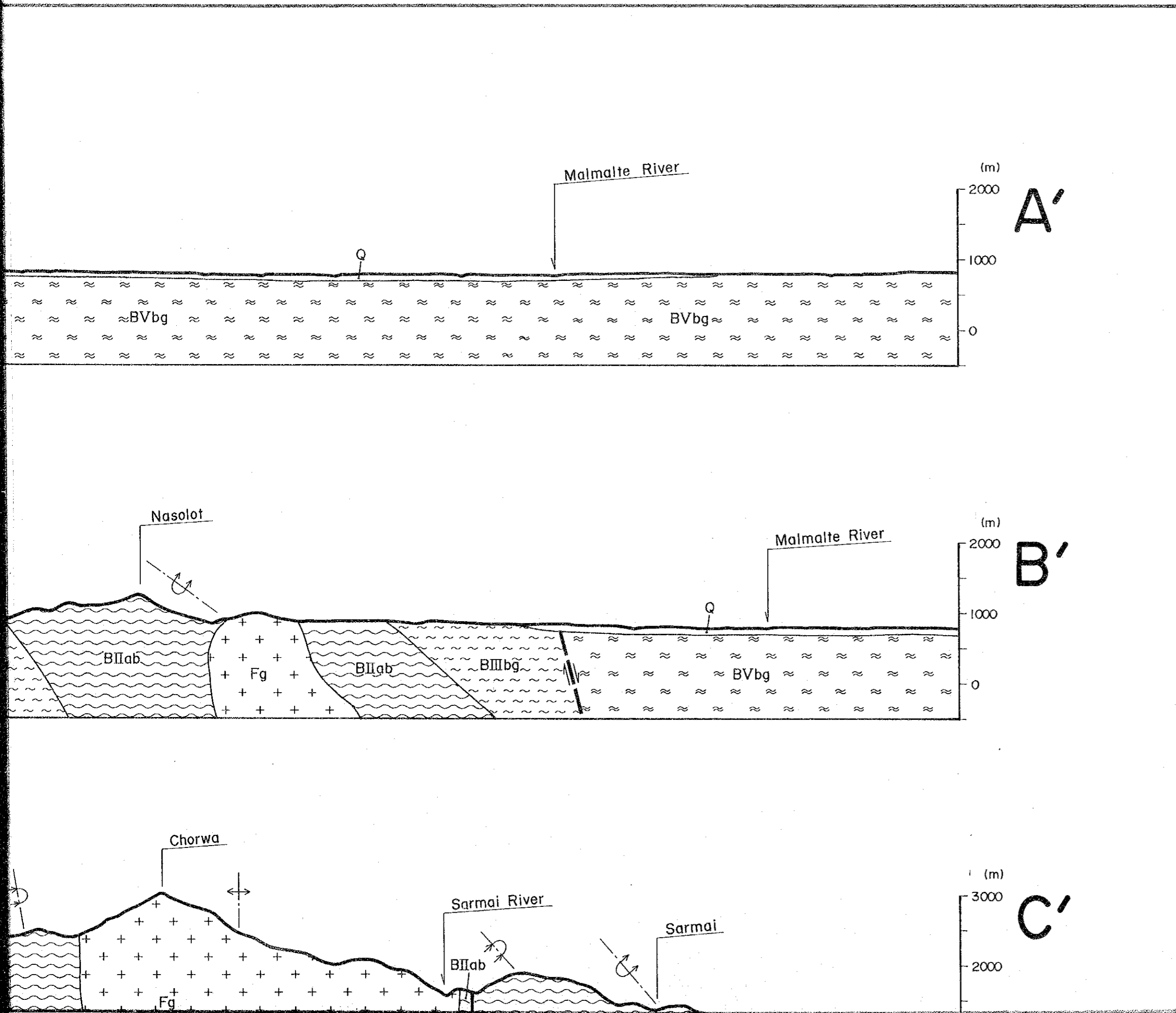
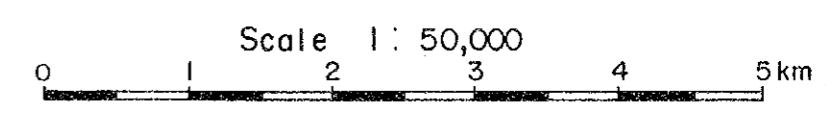
MINERAL EXPLORATION
IN
THE KERIO VALLEY DEVELOPMENT AUTHORITY AREA
(PHASE I)

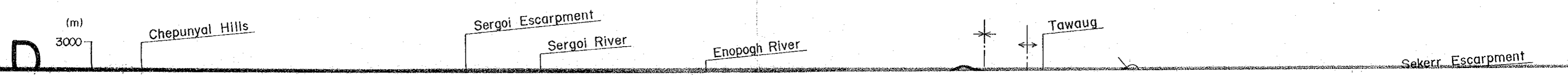
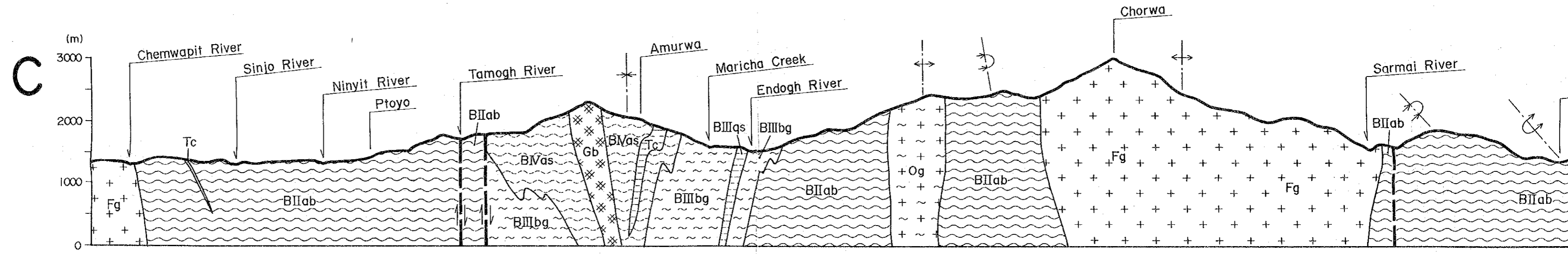
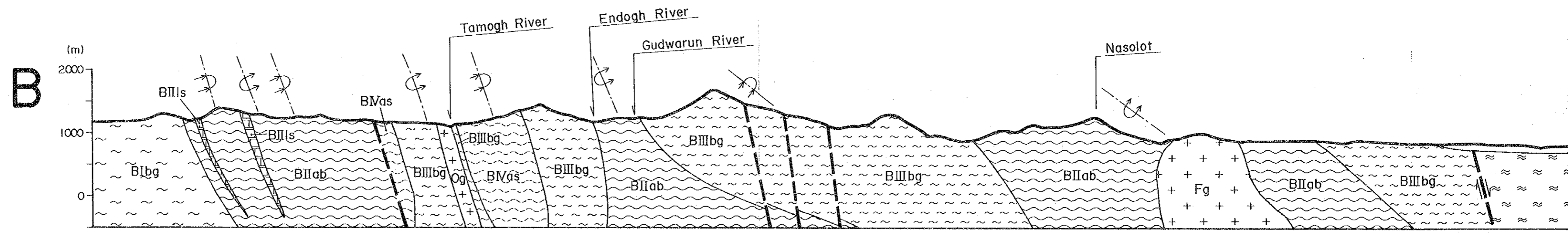
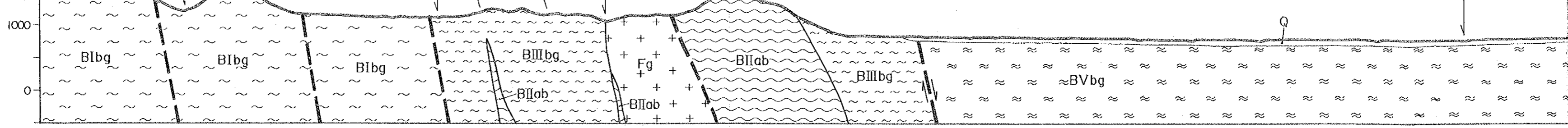
GEOLOGICAL SECTIONS,
REGIONAL SURVEY AREA

LOCATION INDEX

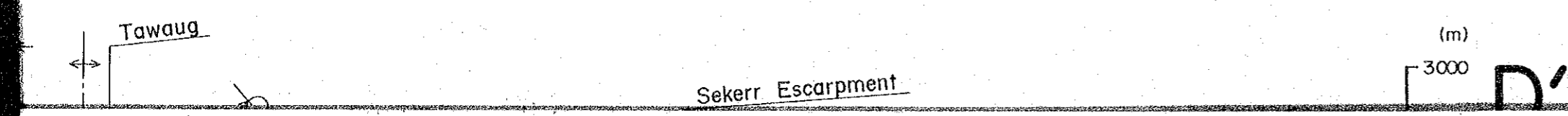
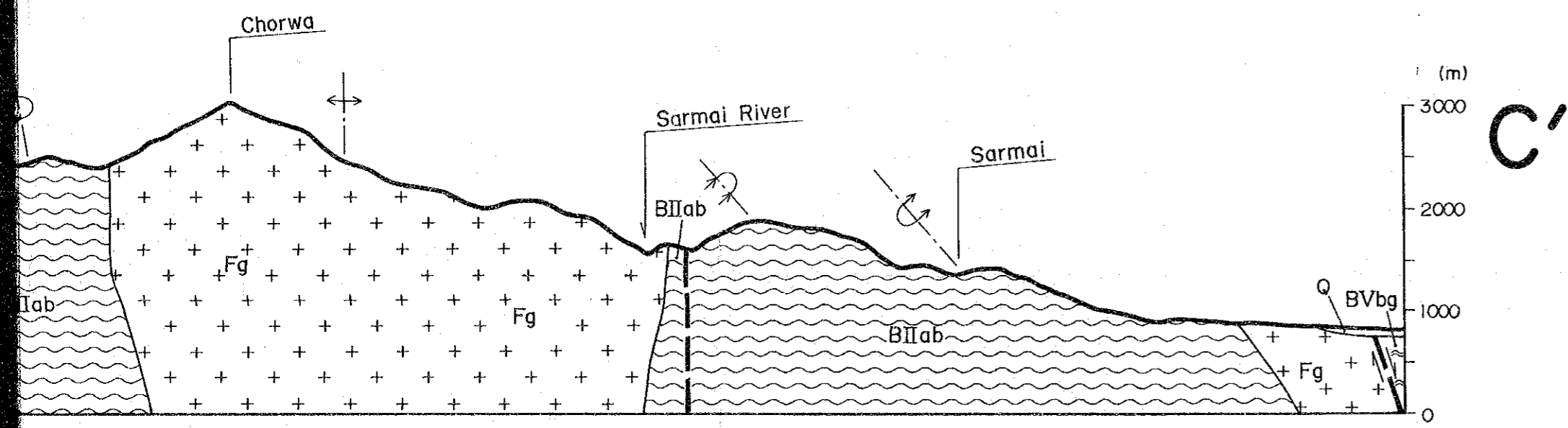
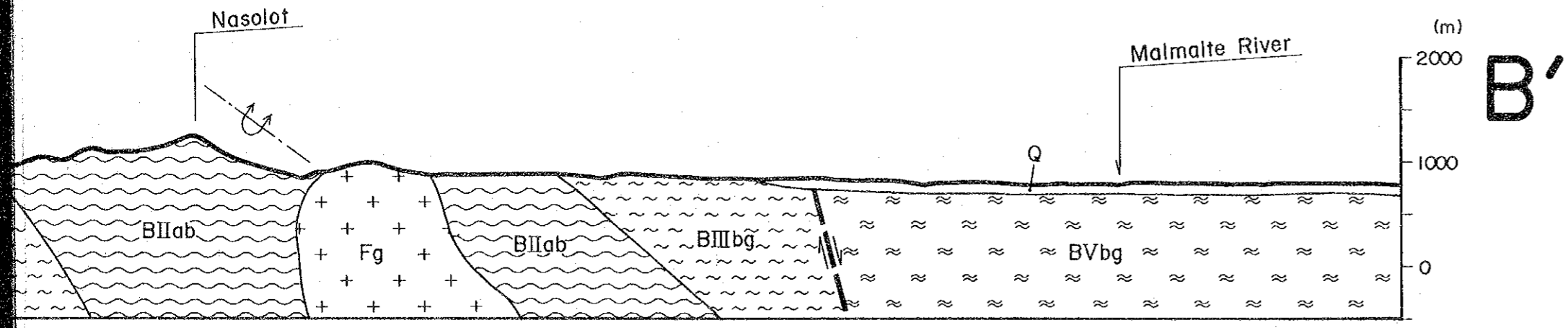
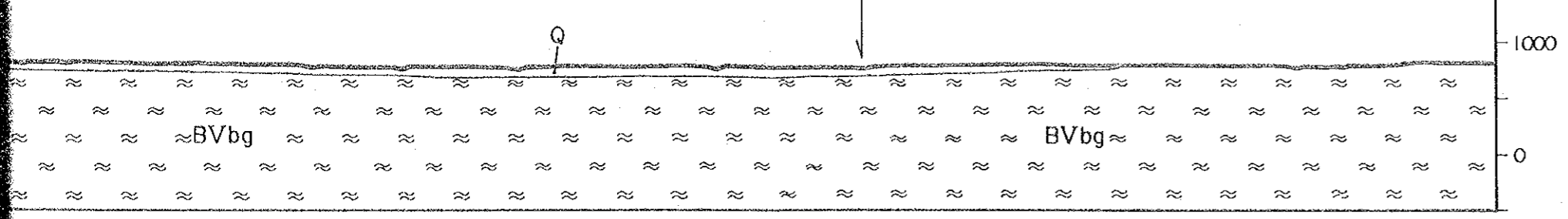


JAPAN INTERNATIONAL COOPERATION AGENCY
METAL MINING AGENCY OF JAPAN
March 1984

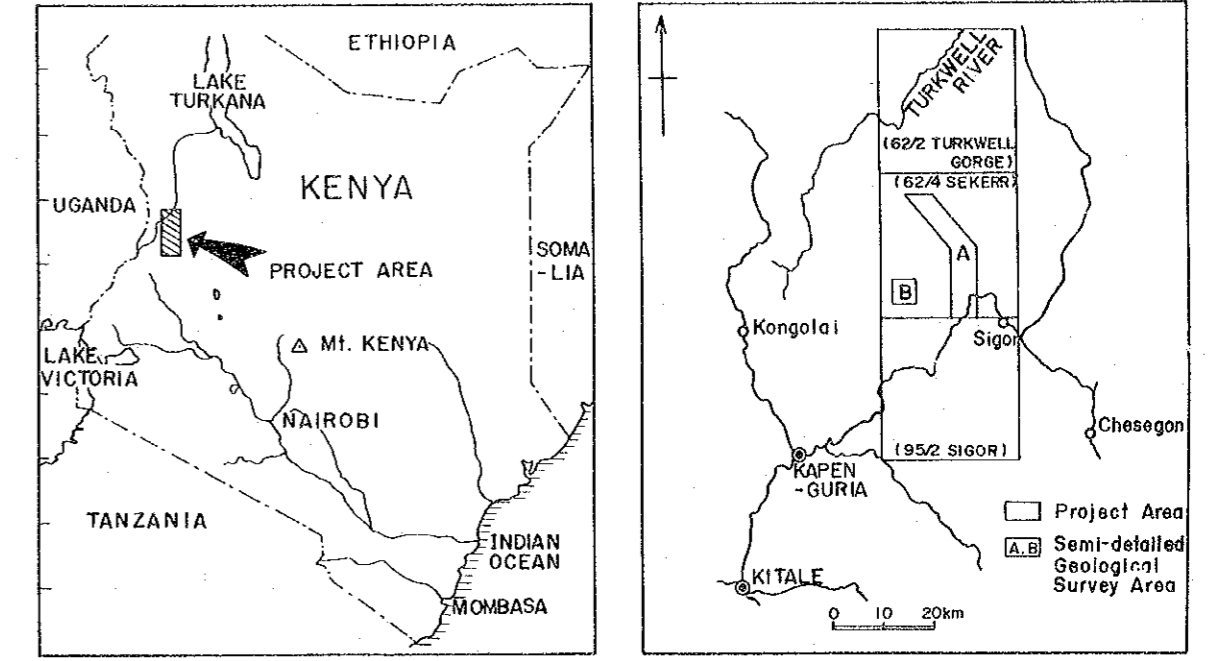




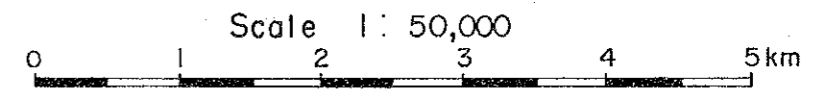
GEOLOGICAL SECTIONS, REGIONAL SURVEY AREA



LOCATION INDEX

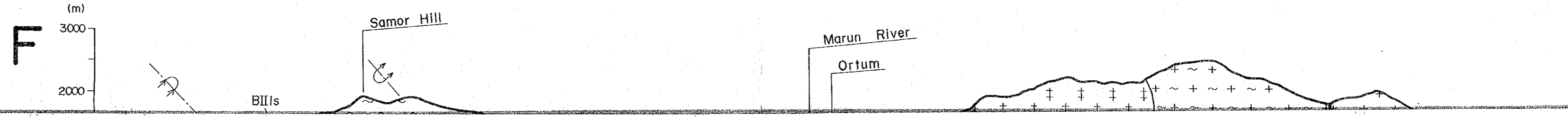
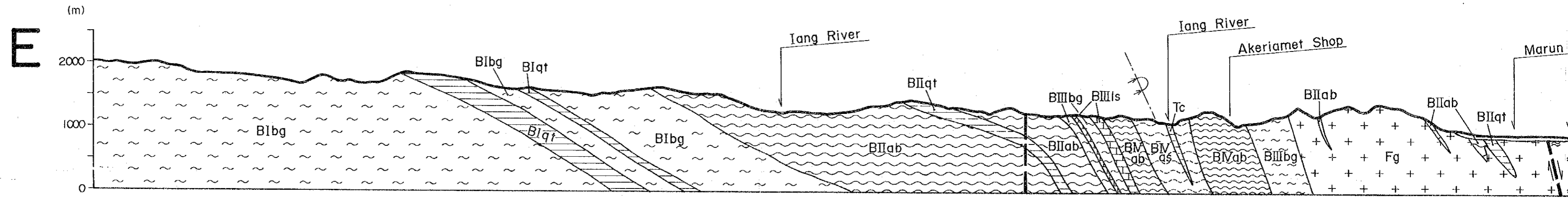
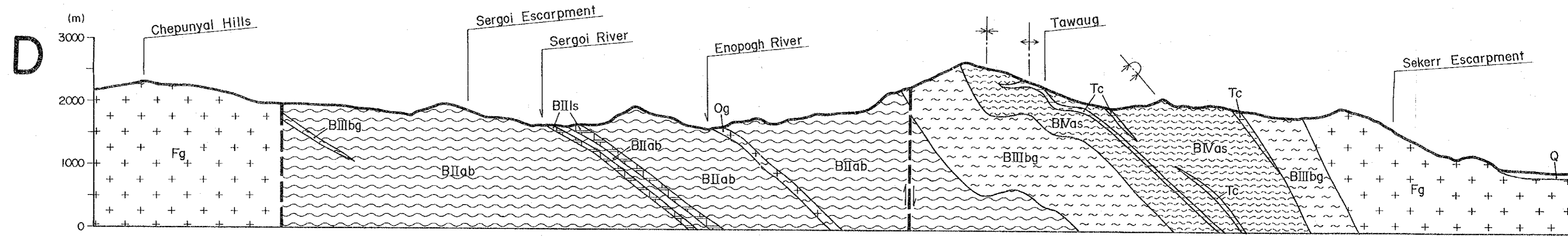
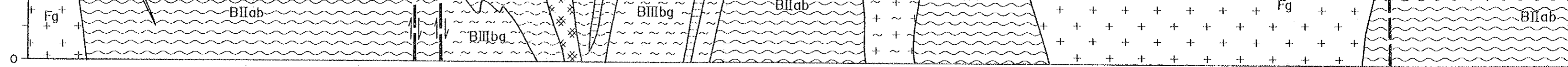


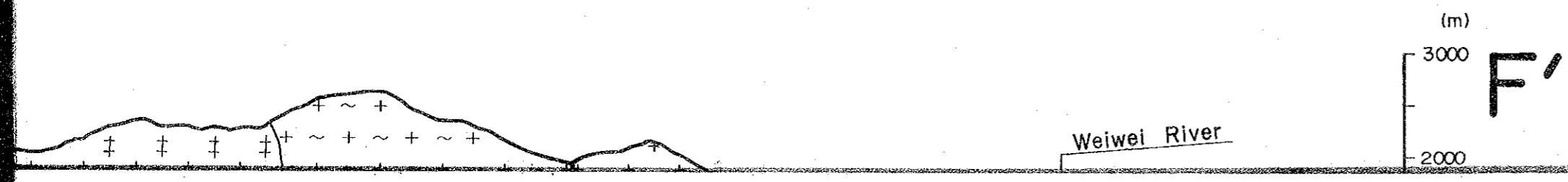
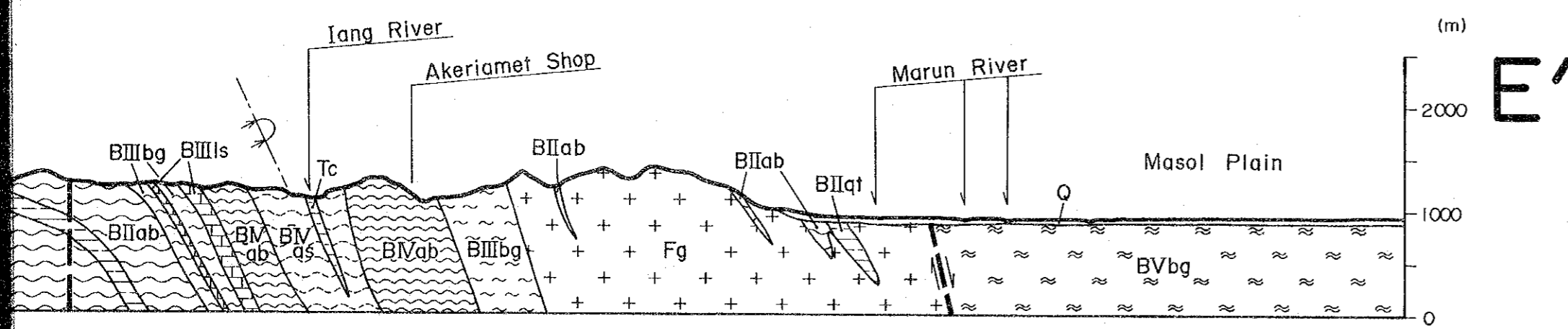
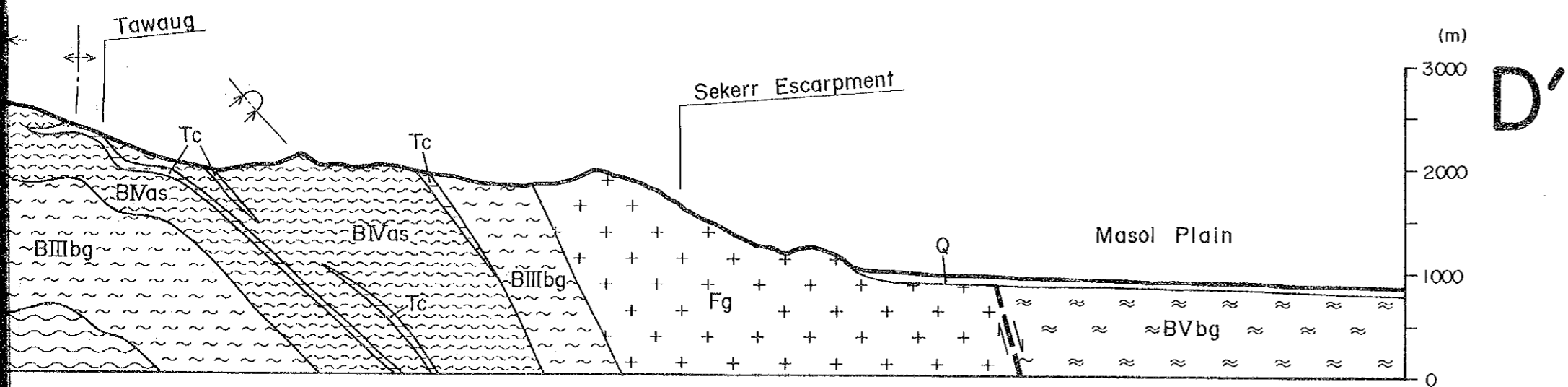
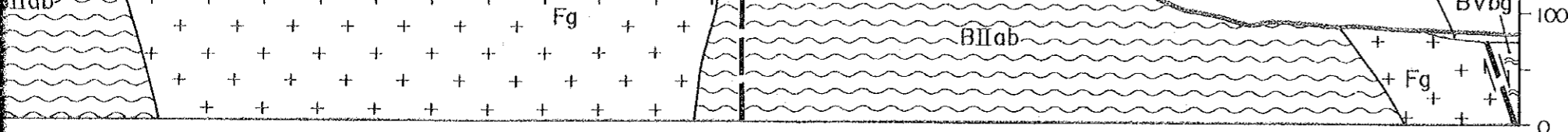
JAPAN INTERNATIONAL COOPERATION AGENCY
METAL MINING AGENCY OF JAPAN
March 1984



LEGEND

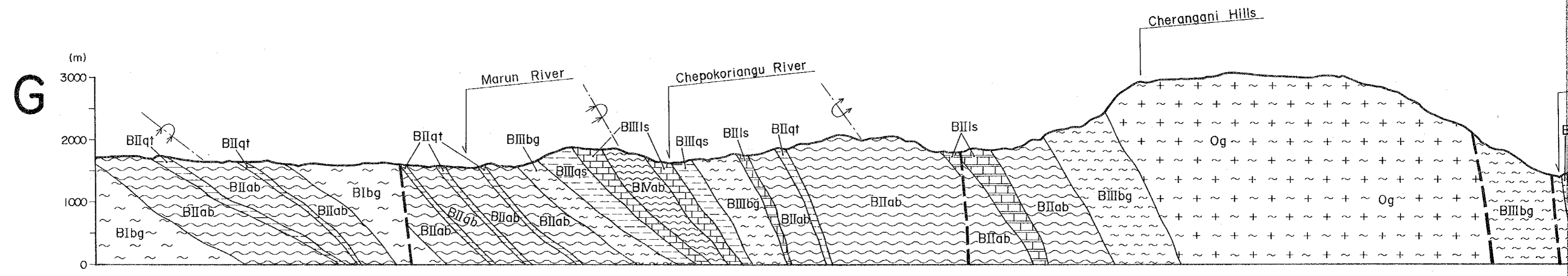
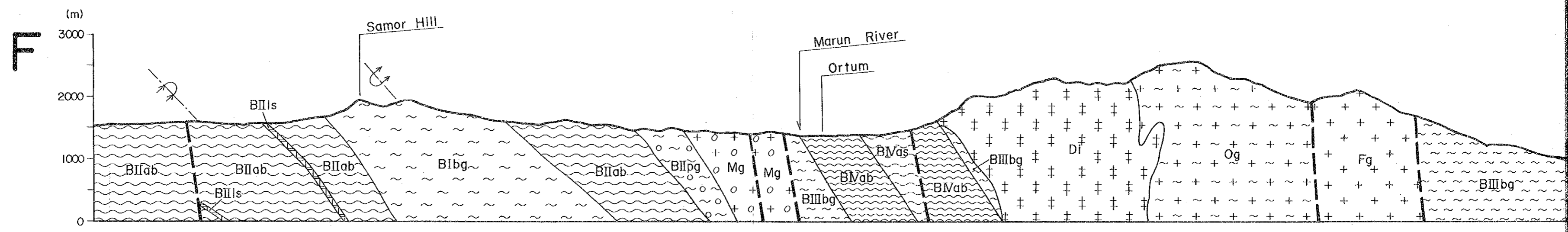
Quaternary	Q	Soil, Sand and Gravel
Basement	BVbg	Biotite gneiss
	BVls	Crystalline limestone

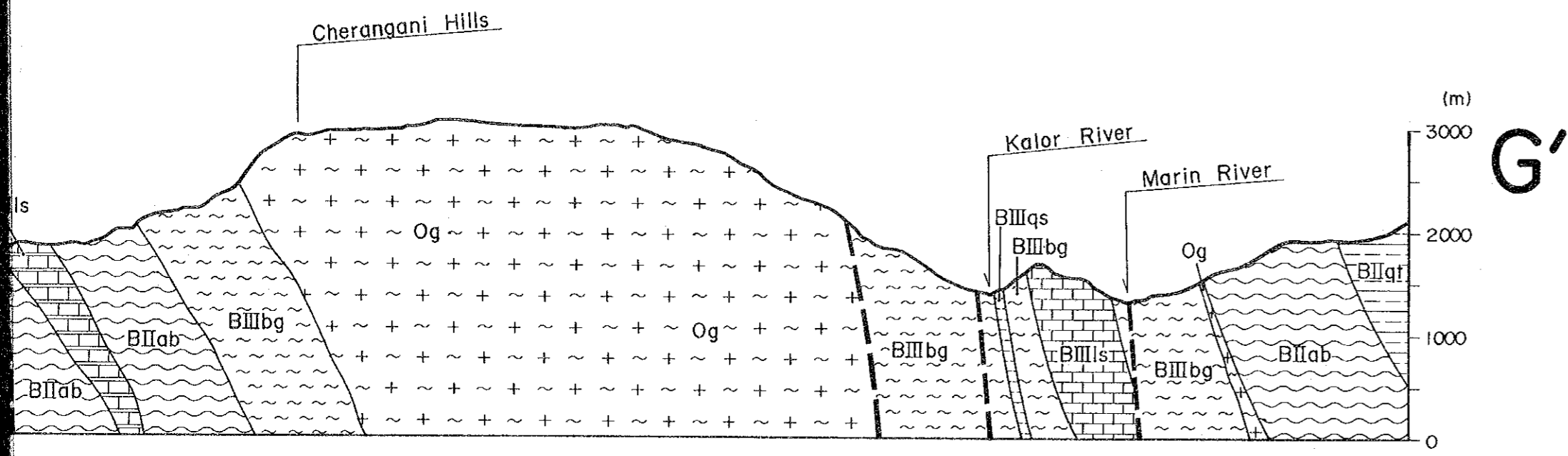
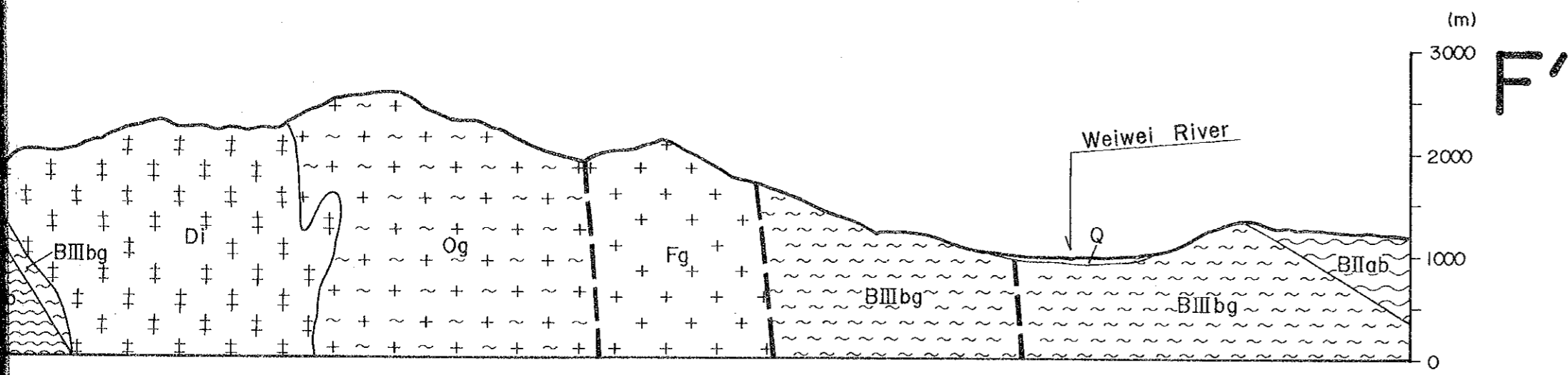
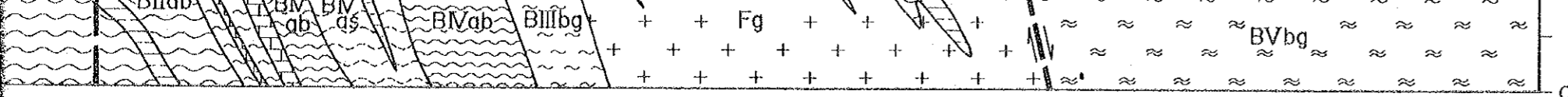




LEGEND






Quaternary	Q	Soil, Sand and Gravel	
Basement System (Pre-Cambrian)	Basement V	BVbg	Biotite gneiss
		BVls	Crystalline limestone
	Basement IV	BVas	Actinolite-Chlorite schist, Tremolite schist, Chlorite schist
		BVab	Amphibolite, Hornblende gneiss
	Basement III	BIIIms	Biotite-Muscovite and Biotite-Muscovite-Hornblende schist
		BIIIbg	Biotite gneiss with subordinate Hornblende Biotite gneiss, Amphibolite
		BIIIqs	Quartz Schist, Quartzite
		BIIIls	Crystalline limestone
	Basement II	BIIpg	Porphyroblastic gneiss
		BIIab	Amphibolite, Hornblende gneiss with subordinate Biotite gneiss
BIIqt		Quartzite, Quartz schist	
Basement I	BIIls	Crystalline limestone	
	BIbg	Biotite gneiss, Hornblende-Biotite gneiss with subordinate Hornblende gneiss	
	BIqt	Quartzite with subordinate Amphibolite	
Intrusive rocks	Fg	Foliated Granite	
	Og	Granitoid Orthogneiss	
	Mg	Migmatitic type Granite, Migmatite	
	Di	Biotite-Hornblende Diorite, Epi Diorite, Meta Diorite	
	Gb	Gabbro, Meta Gabbro	
	Ub	Ultrabasic rock, Serpentinite	
	Tc	Talc schist	
	- - - - -	Inferred fault	





Intrusive rocks

Og	~ + ~	Granitoid or Migmatites
Mg	+ o + o + o	Migmatitic type Granite, Migmatite
Di	† † † ‡ ‡ ‡	Biotite-Hornblende Diorite, Epi Diorite, Meta Diorite
Gb	× × × × × ×	Gabbro, Meta Gabbro
Ub	▨ ▨ ▨ ▨ ▨ ▨	Ultrabasic rock, Serpentine
Tc	— — — — — —	Talc schist

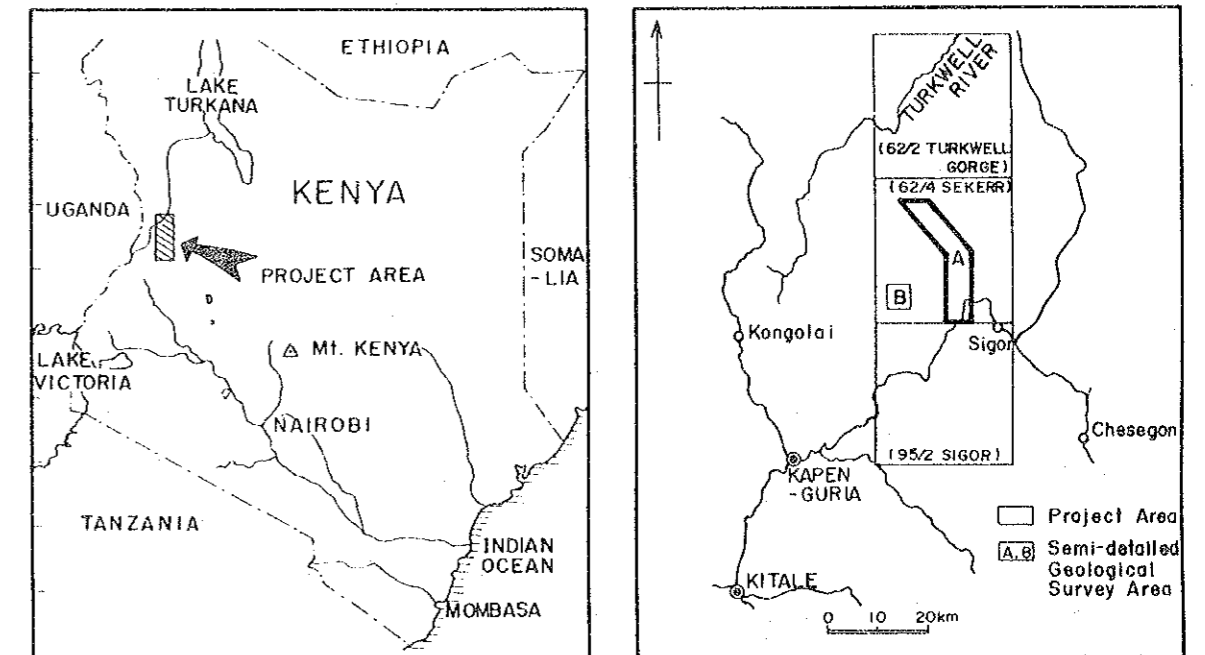
-  Inferred fault
-  Anticlinal axis
-  Overturned Anticlinal axis
-  Synclinal axis
-  Overturned Synclinal axis



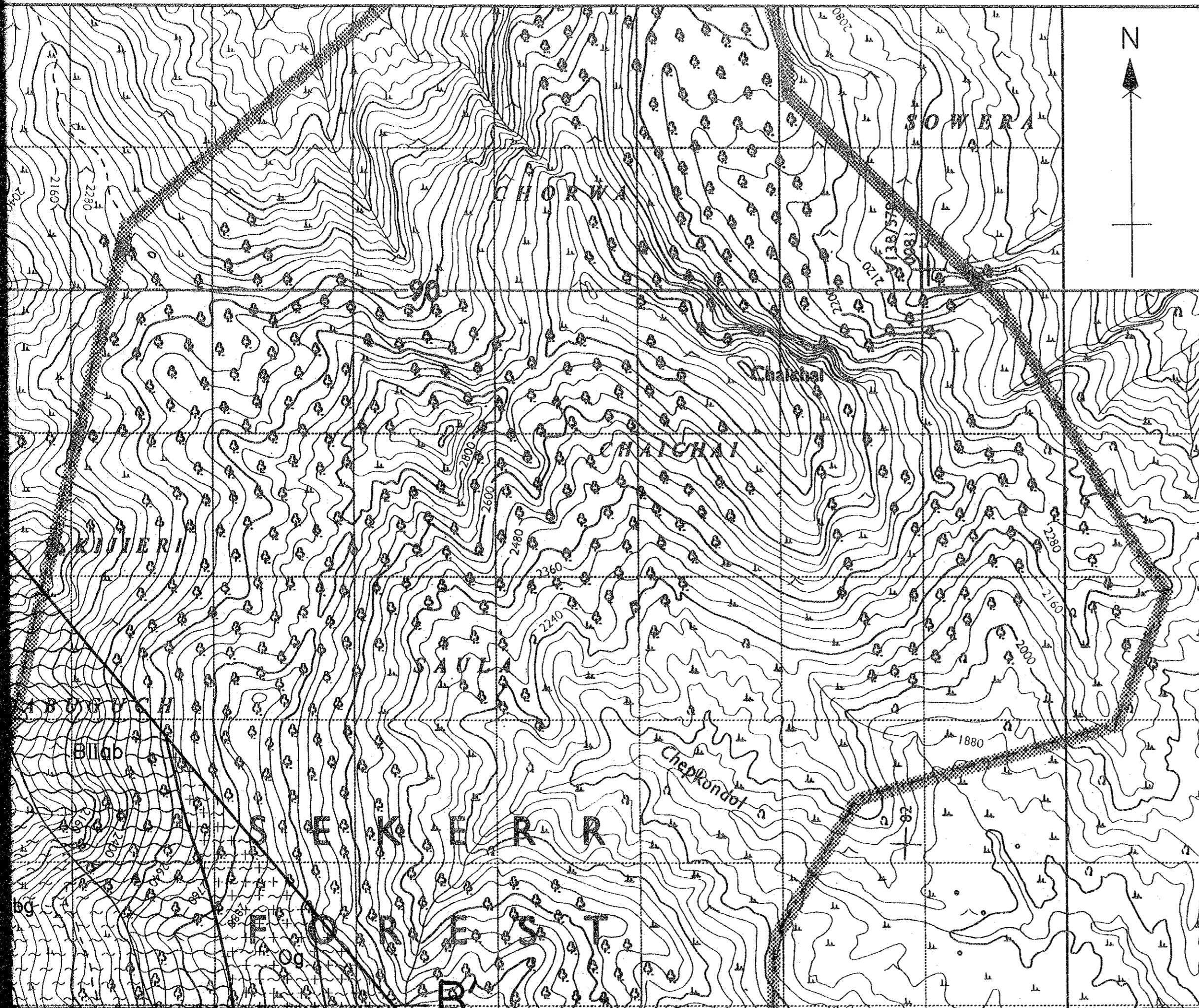
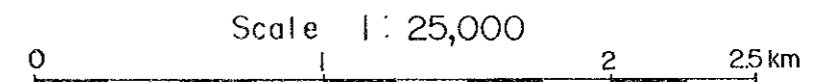
MINERAL EXPLORATION
IN
THE KERIO VALLEY DEVELOPMENT AUTHORITY AREA
(PHASE I)

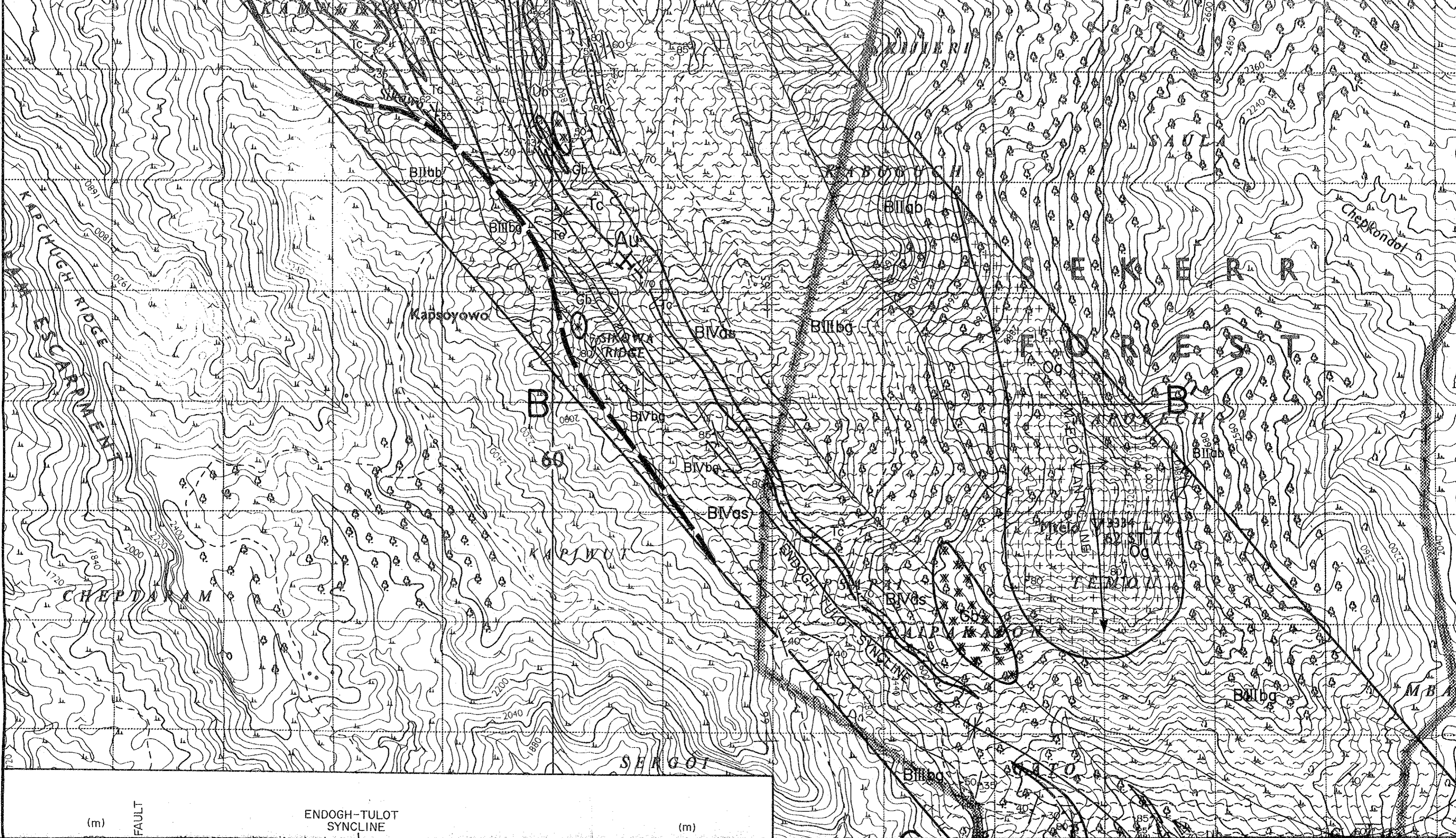
GEOLOGICAL MAP AND PROFILES, SEMI-DETAILED SURVEY AREA

LOCATION INDEX



JAPAN INTERNATIONAL COOPERATION AGENCY
METAL MINING AGENCY OF JAPAN
March 1984



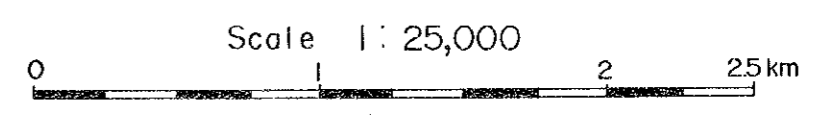
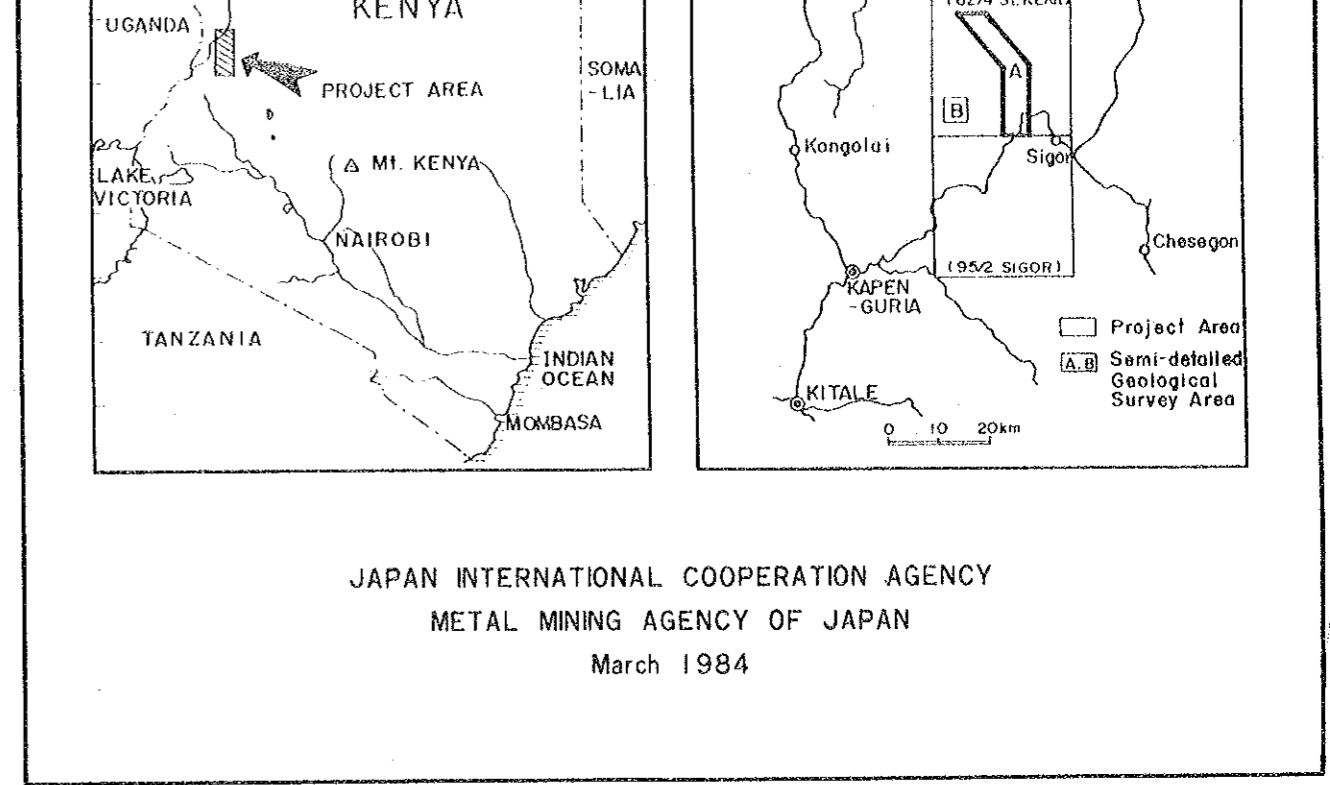
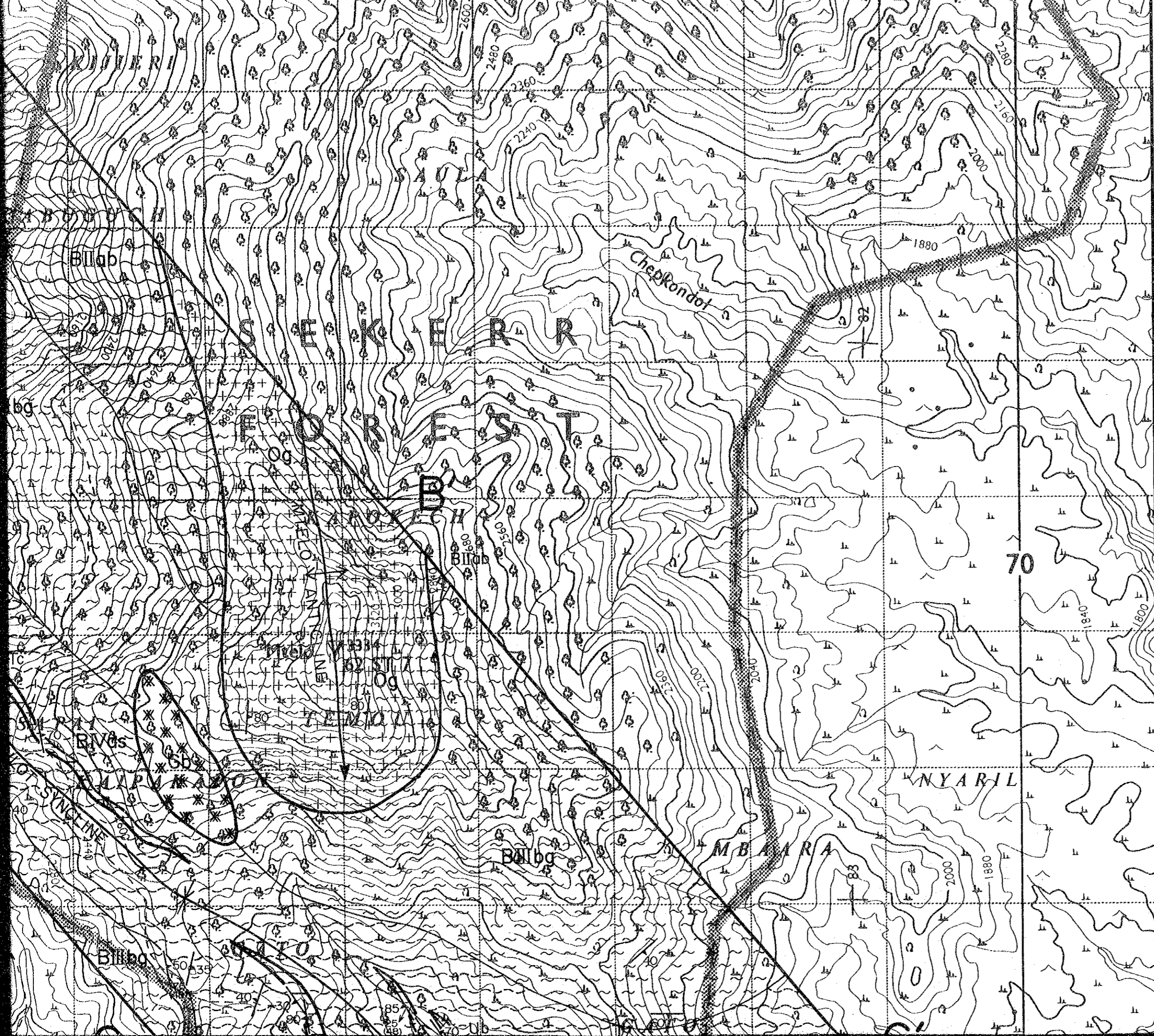


(m)

FAULT

ENDOGH-TULOT
SYNCLINE

(m)



LEGEND

(Pre - Cambrian)	Basement IV	BIVas		Chlorite schist, Chlorite-actinolite schist Tremolite schist with subordinate Amphibolite, Quartz schist, Biotite gneiss
		BIVab		Amphibolite with subordinate Quartzite, Biotite gneiss
		BIVbg		Biotite gneiss
		BIVls		Crystalline limestone
		BIVqt		Quartzite, Quartz schist
		BIVge		Garnet-enstatite porphyroblastic rock

