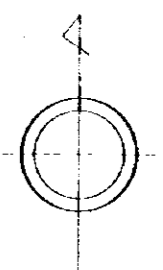
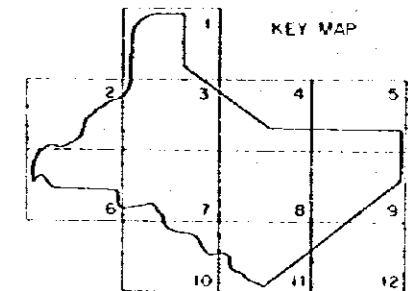


HOSANIA VALLEY PROJECT AREA



REFERENCE

- Levelling heights 13.43
- Contours — 300 —
— 325 —
- Levelling Bench Mark [o]
- Main road — — — —

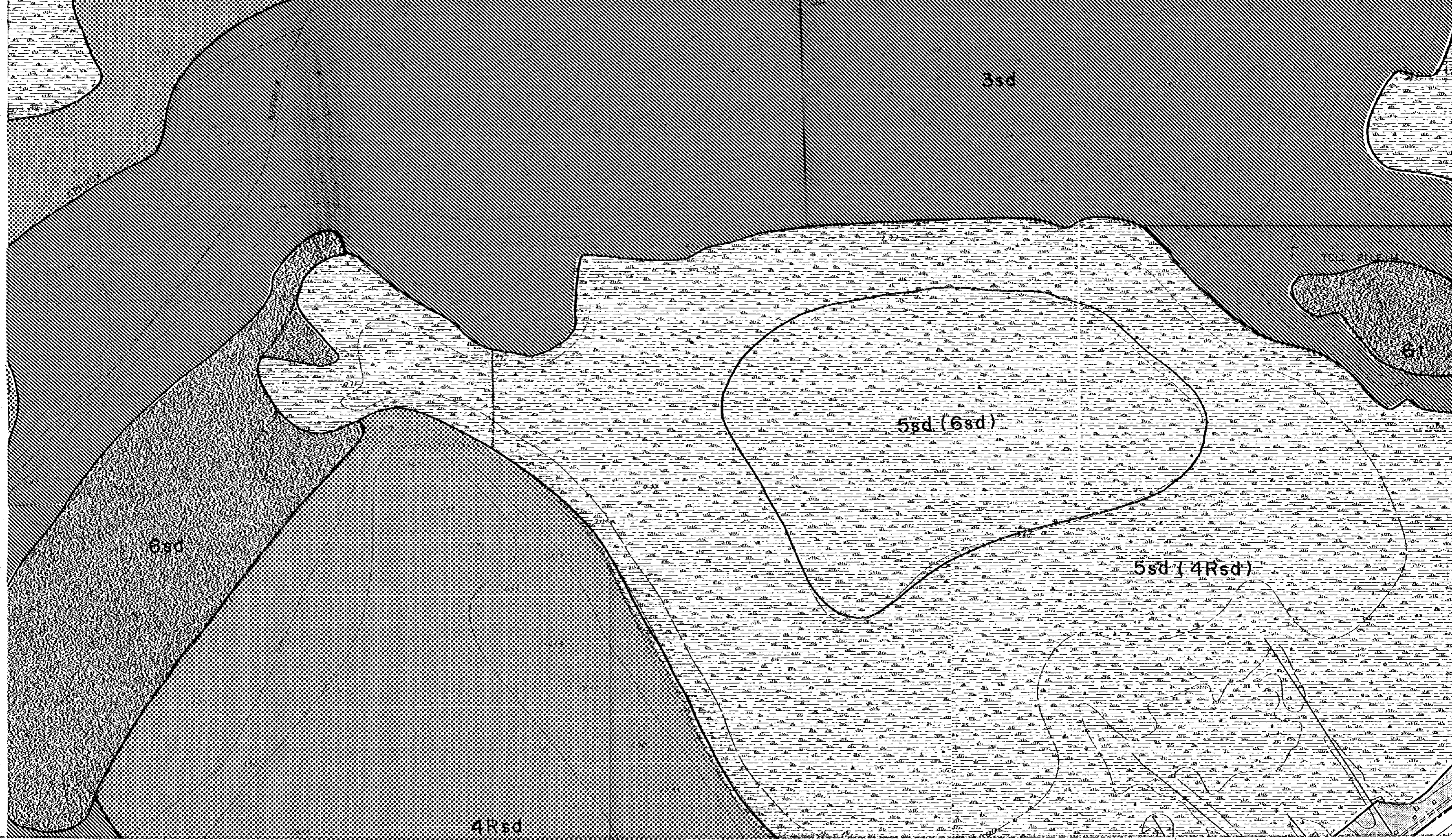
3sd

5sd (6sd)

5sd (4Rsd)

6sd

4Rsd



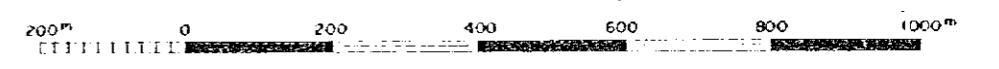


REFERENCE

- Levelling heights 1743
- Contours 300
 325
- Levelling Bench Mark □
- Main road ————
- Car tracks - - - - -
- Irrigation canal = = = = =
- Private canal ————
- Marsh area ◉

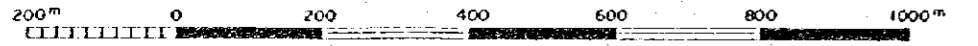


SCALE 1 : 10,000





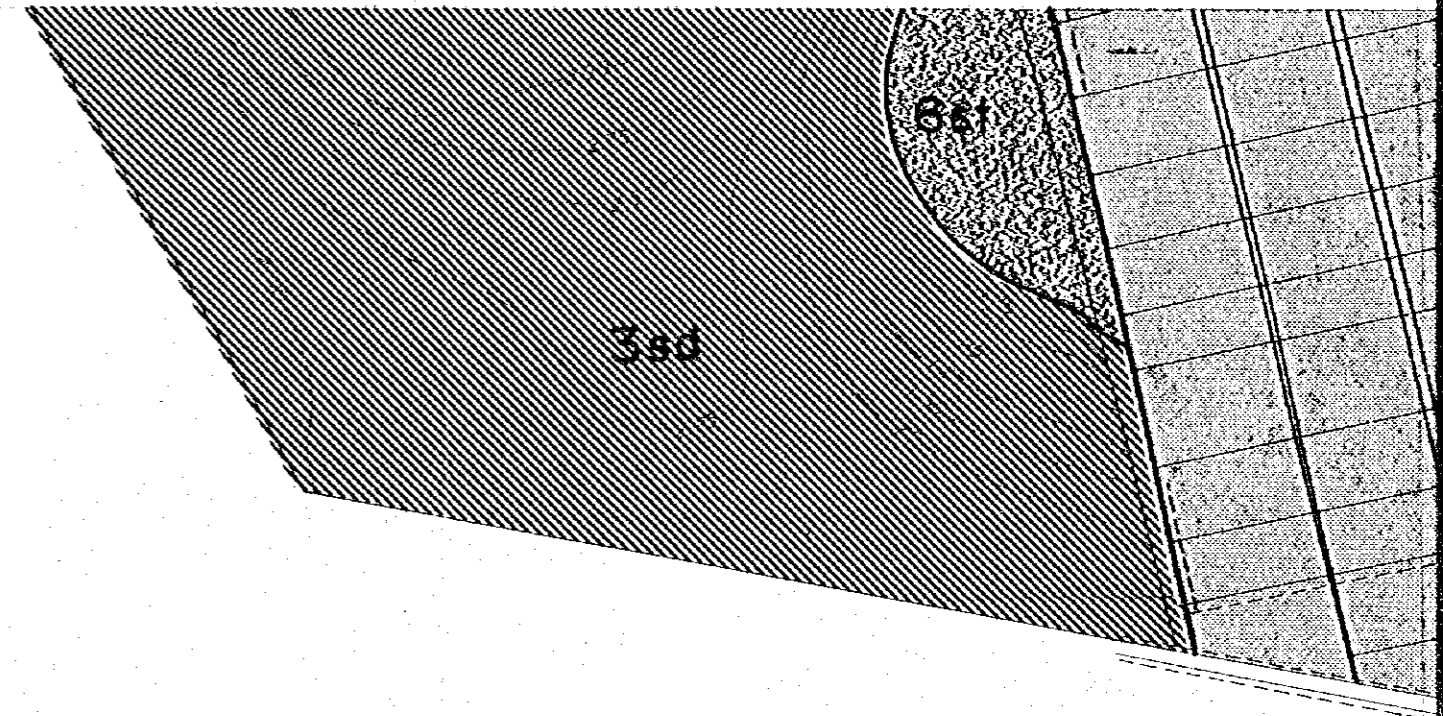
SCALE 1:10,000



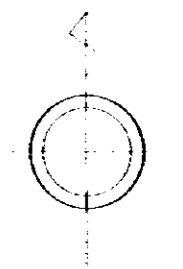
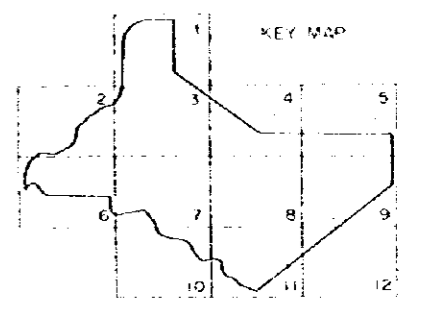
10745

SHEET $\frac{10}{12}$ EGYPT - SCALE 1:10,000

SOUTH HOSANIA VALLEY PROJECT

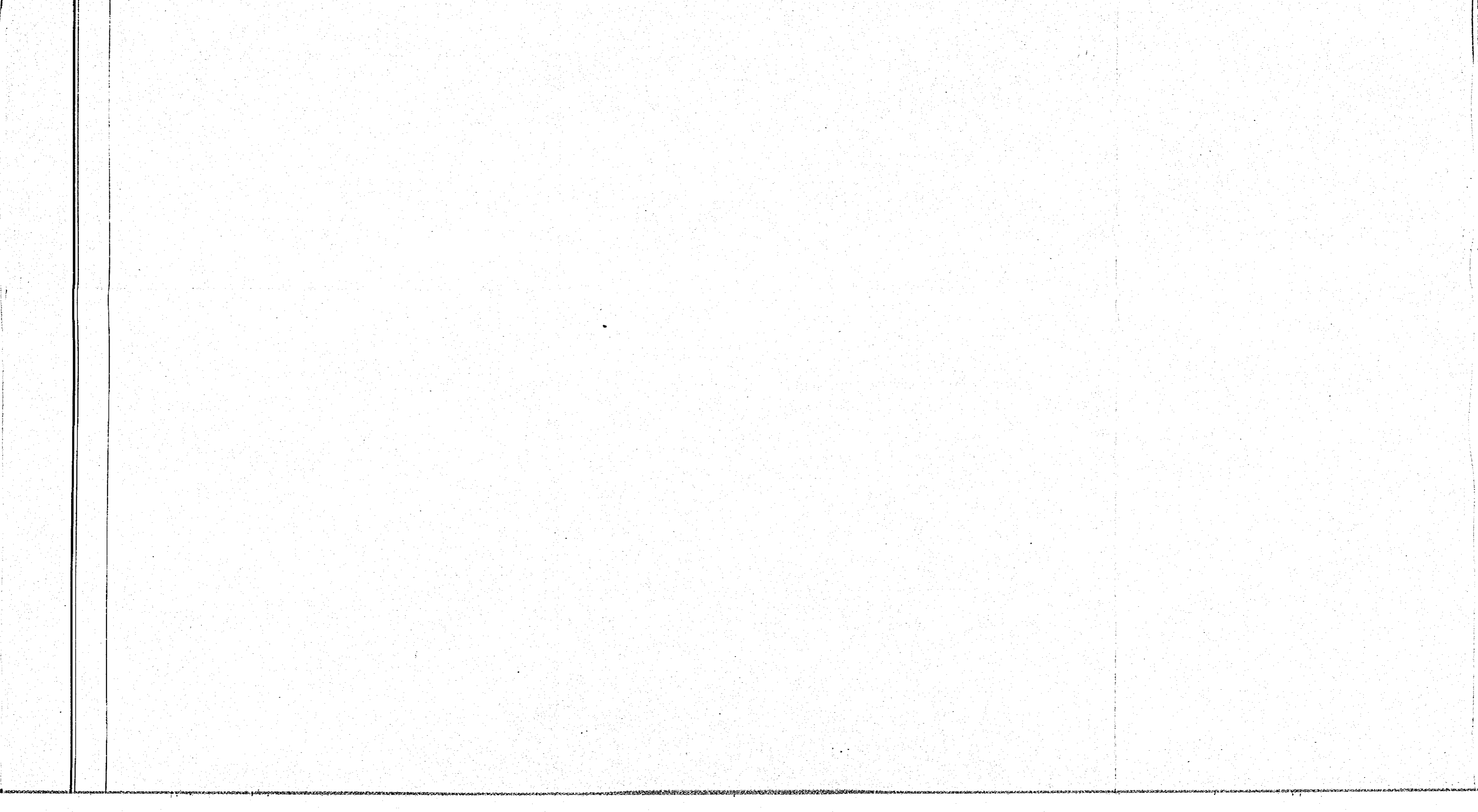


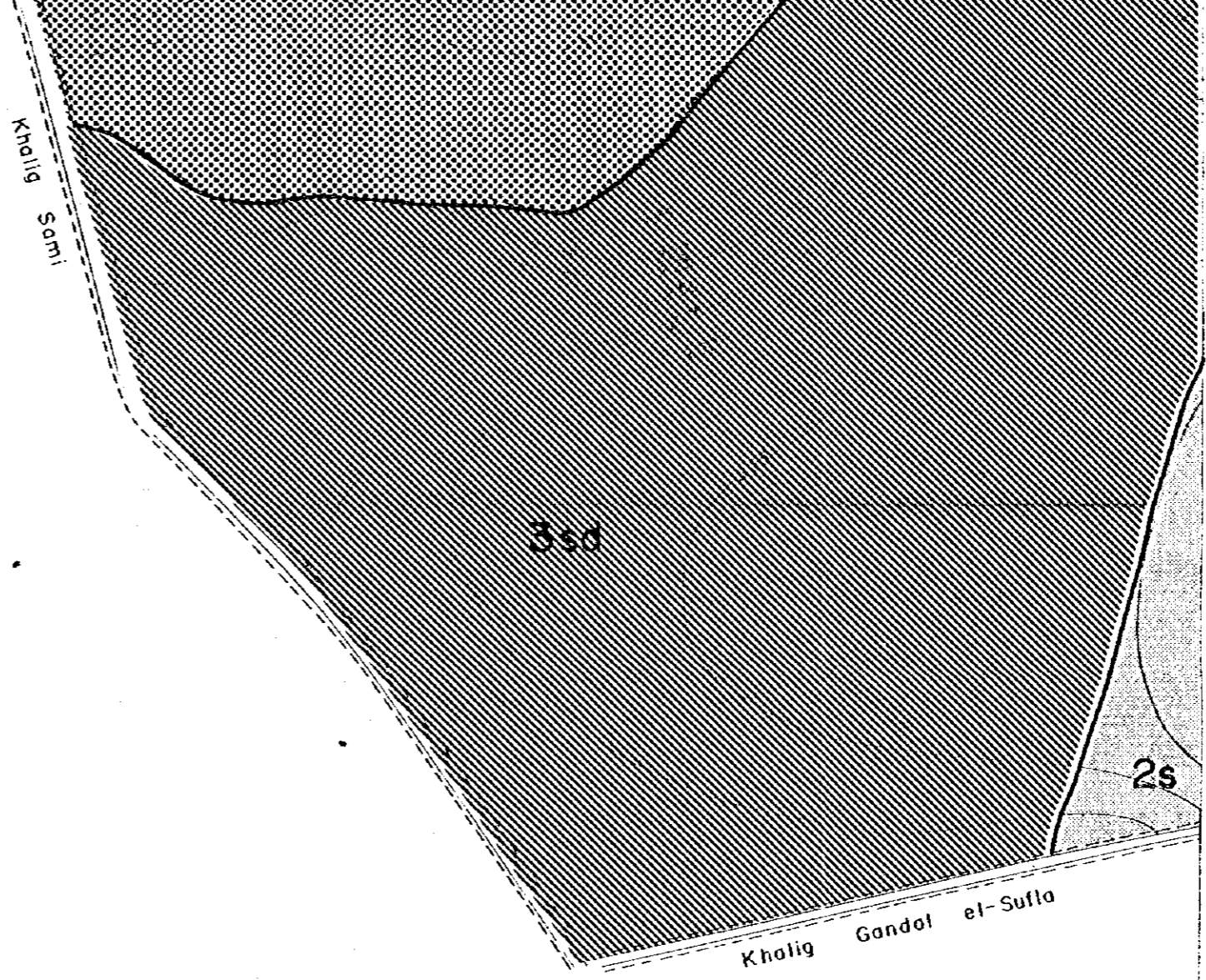
HOSANIA VALLEY PROJECT AREA




REFERENCE

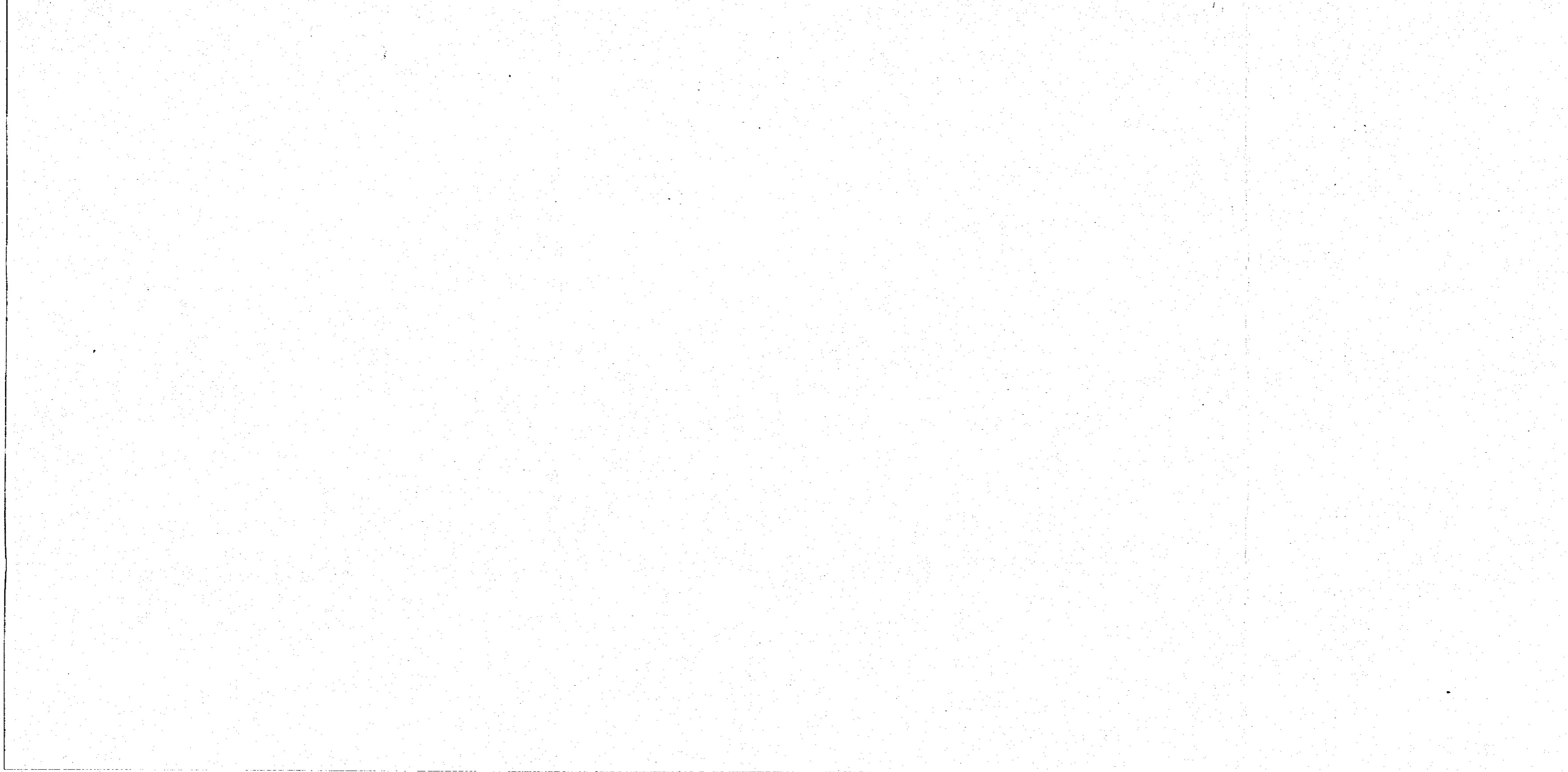
- Leveling heights - 13 43
- Contours $\text{---} 300 \text{---}$
 $\text{---} 325 \text{---}$
- Leveling Bench Mark [o]
- Main road $\text{---} \text{---} \text{---}$





REFERENCE

- Levelling heights -13.43
- Contours ~~300~~
 ~~325~~
- Levelling Bench Mark [a]
- Main road - - - - -
- Car tracks - - - - -
- Irrigation canal = = = = =
- Private canal ————
- Marsh area 



SCALE 1:10,000



SCALE 1:10,000

