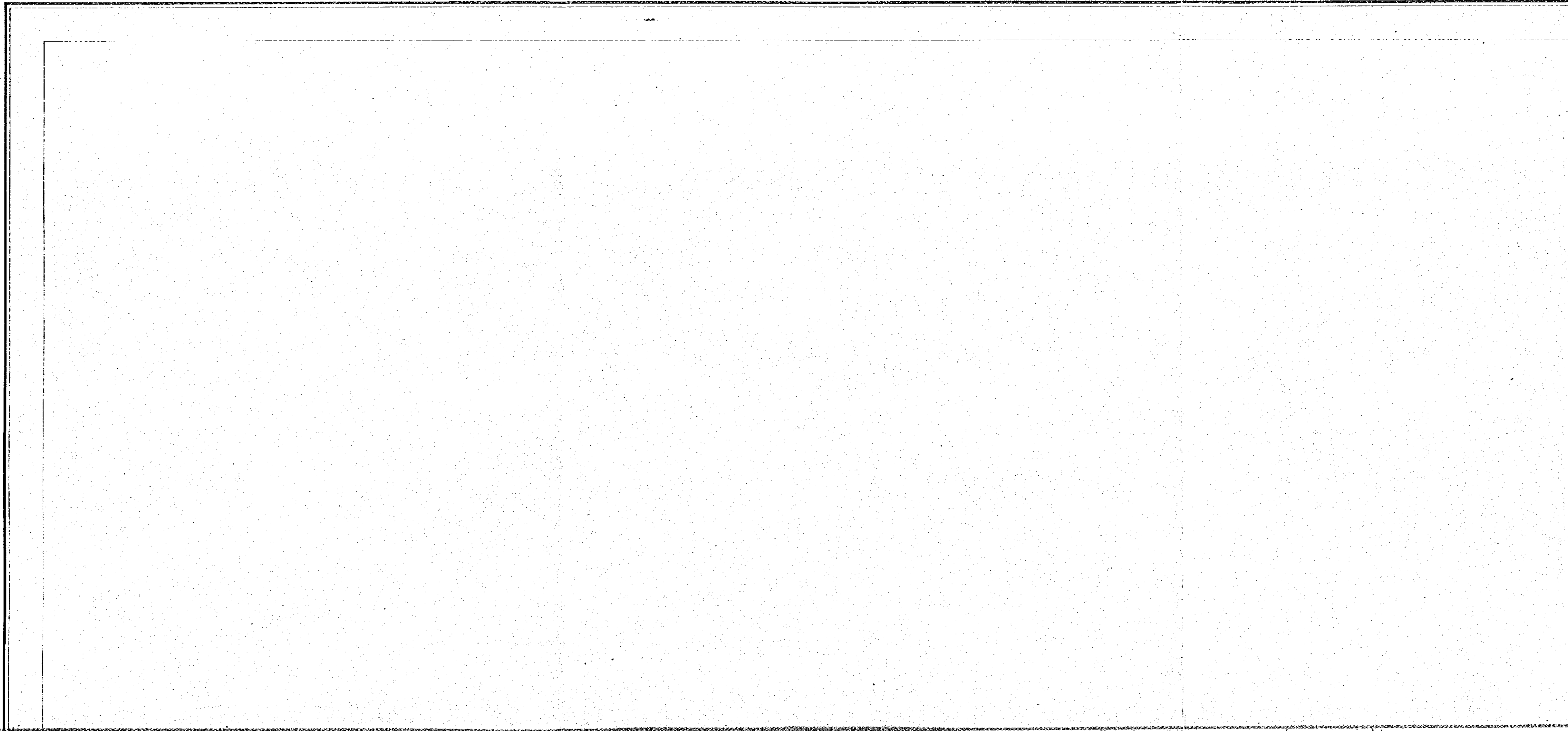


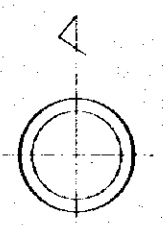
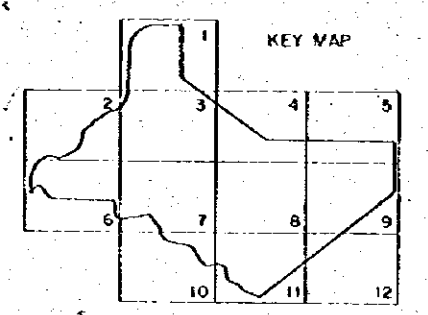
SHEET  $\frac{5}{12}$  EGYPT - SCALE 1:10,000

10745

SOUTH HOSANIA VALLEY PROJECT



# OSANIA VALLEY PROJECT AREA



## REFERENCE

- Levelling heights     13 43
- Contours             300  
                           325
- Levelling Bench Mark     □
- Main road             - - - -
- Car tracks             - - - -

PLAN OF EL-SALAM CANAL



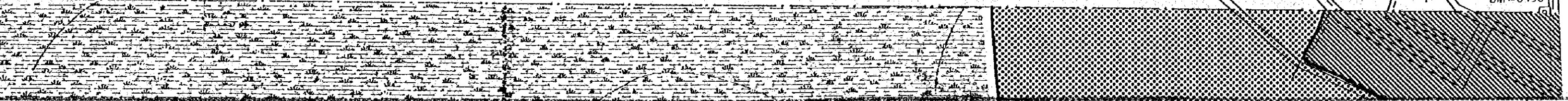
REFERENCE

- Levelling heights     13.43
- Contours             ~~300~~  
                           ~~325~~
- Levelling Bench Mark     □
- Main road             - - - -
- Car tracks             - - - -
- Irrigation canal         = = = =
- Private canal          ————
- Mash area             ◐

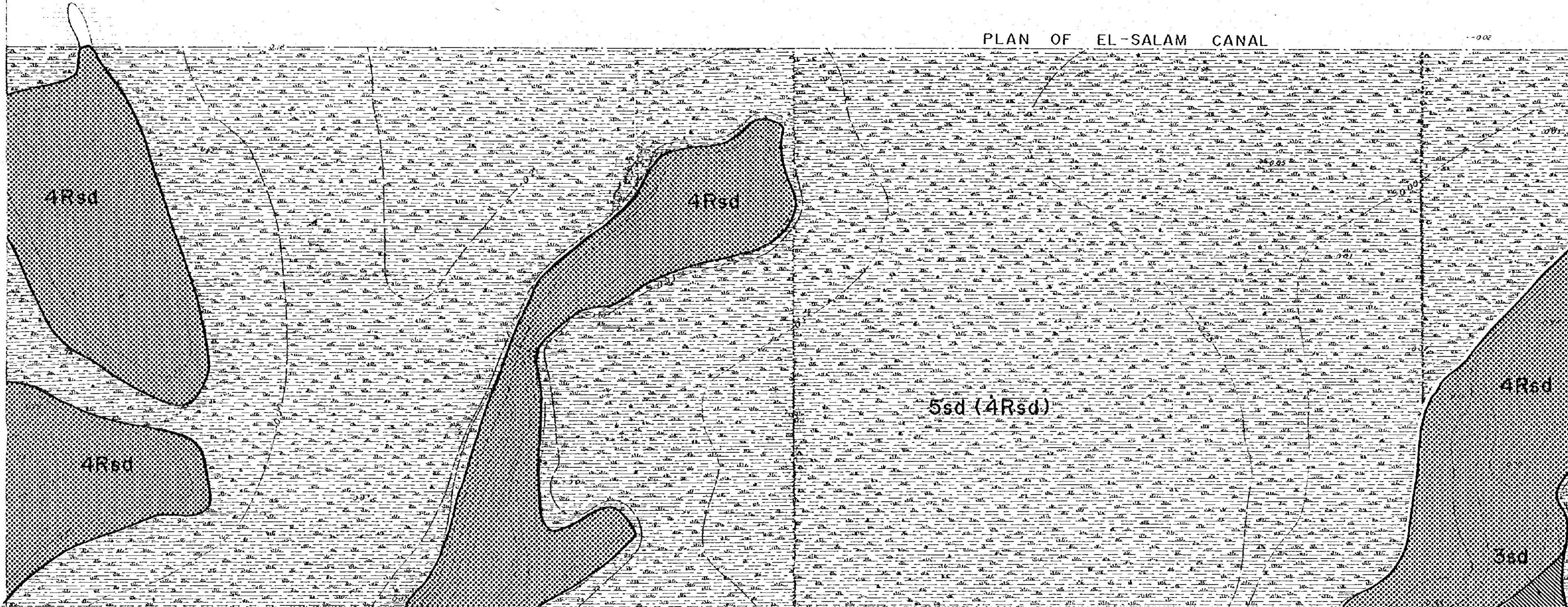
AN OF EL-SALAM CANAL

-0.02

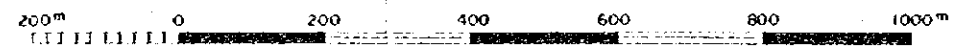
BM=0196



PLAN OF EL-SALAM CANAL



SCALE 1:10,000

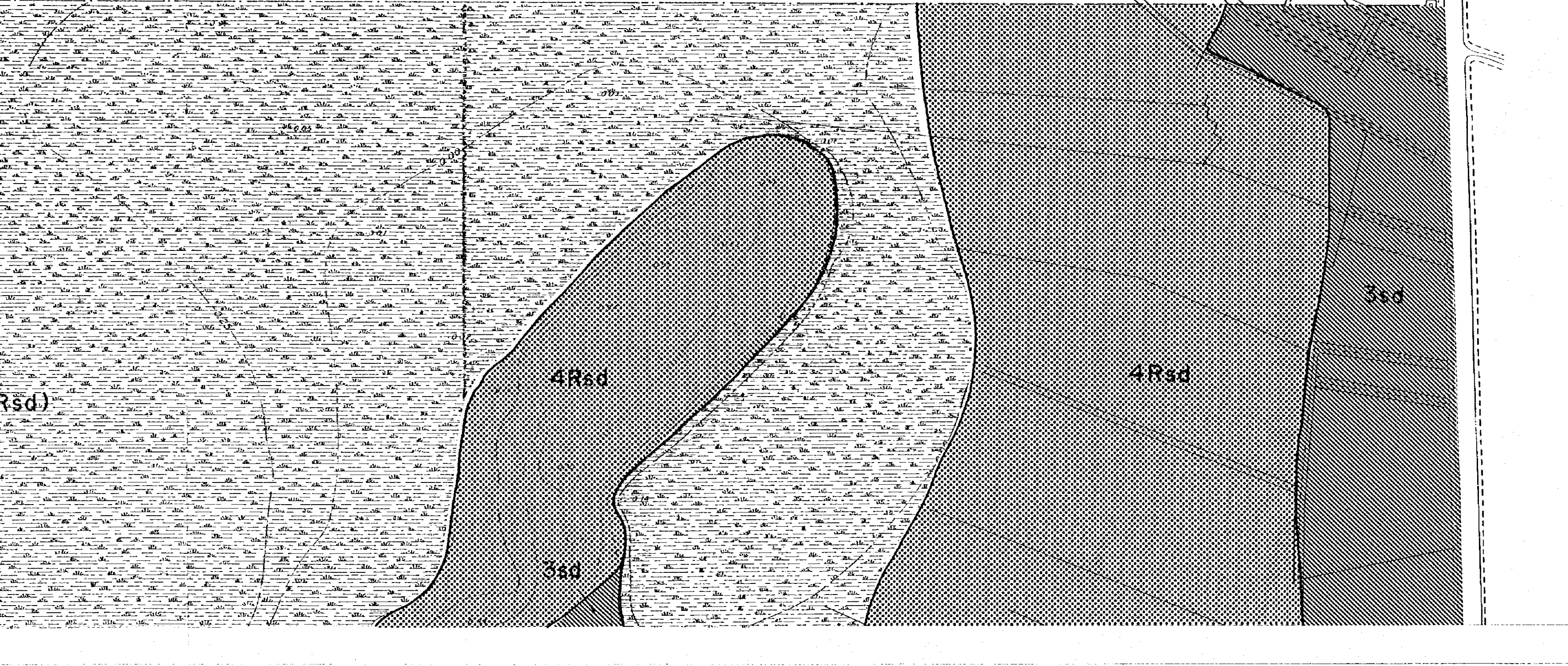




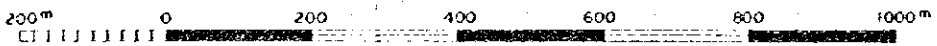
AN OF EL-SALAM CANAL

002

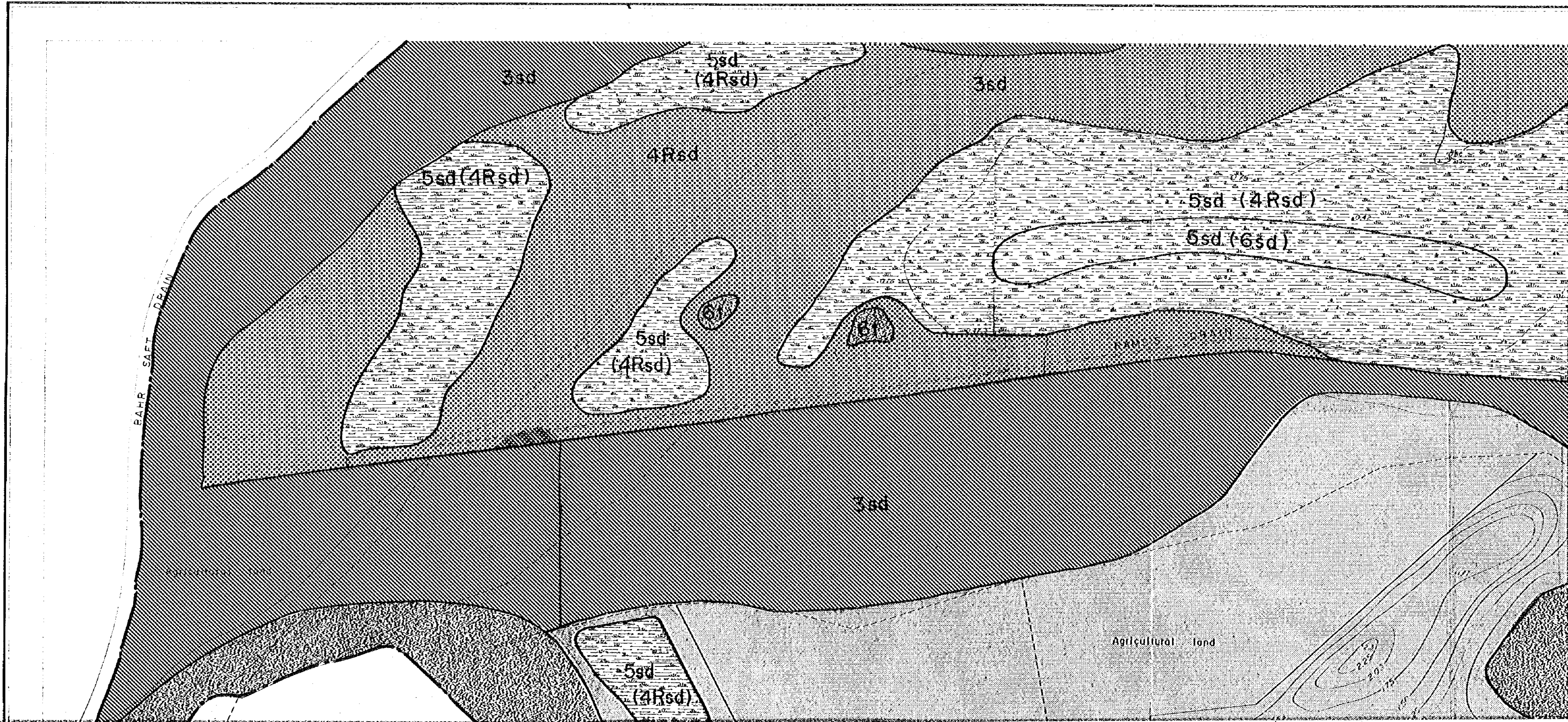
BM = 0.196



SCALE 1:10,000

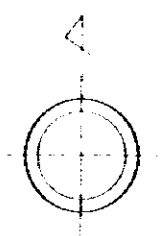
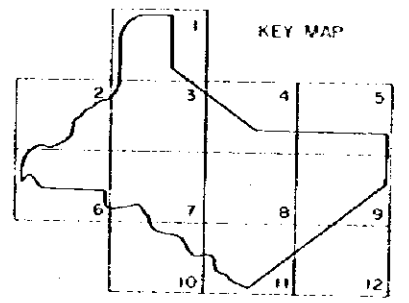
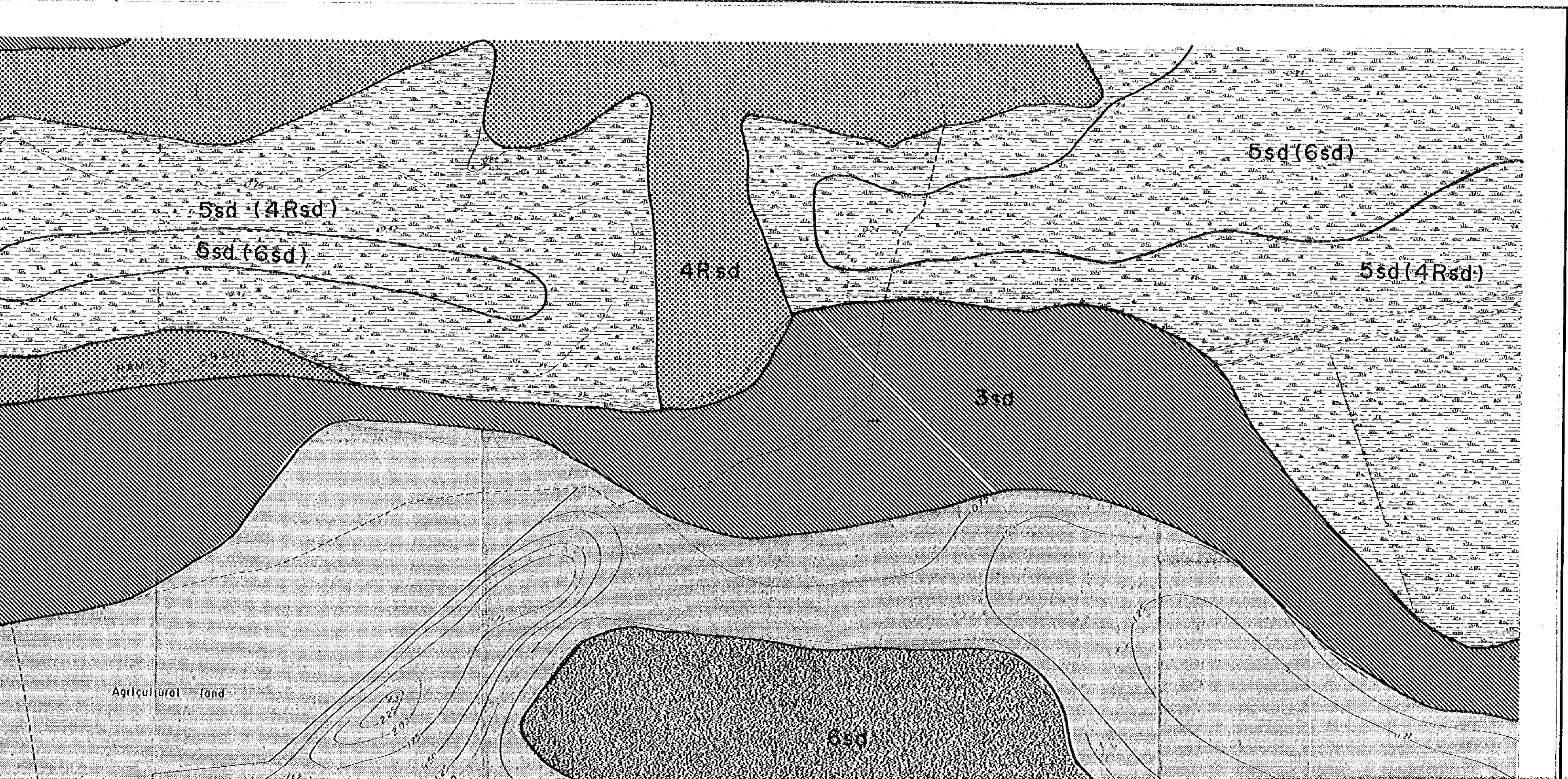








# HOSANIA VALLEY PROJECT AREA



## REFERENCE

- Levelling heights      13 43
- Contours                300  
                             325
- Levelling Bench Mark    [□]
- Main road                - - - - -



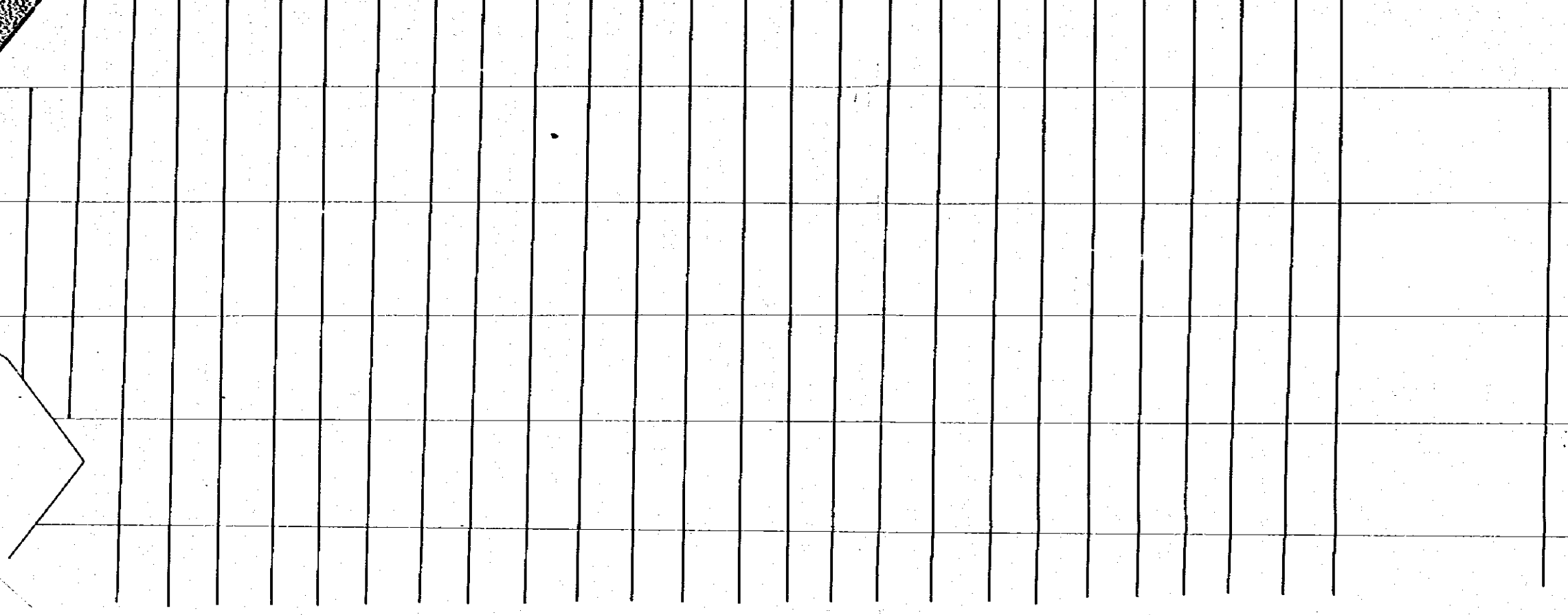
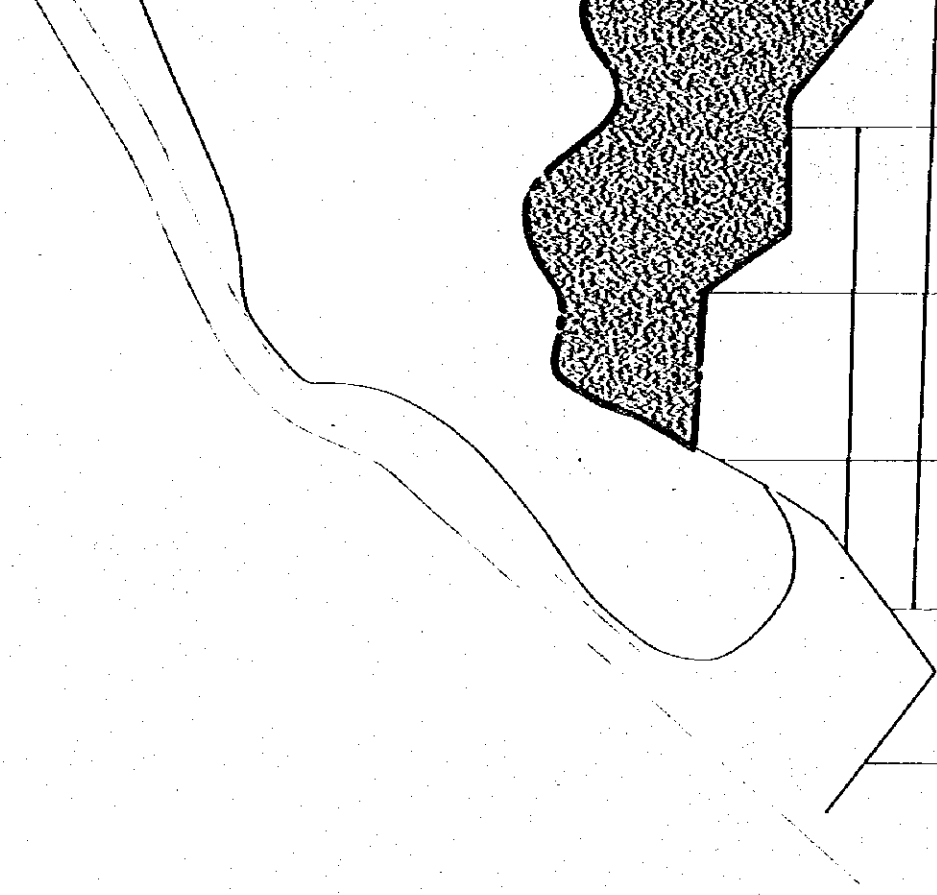






REFERENCE

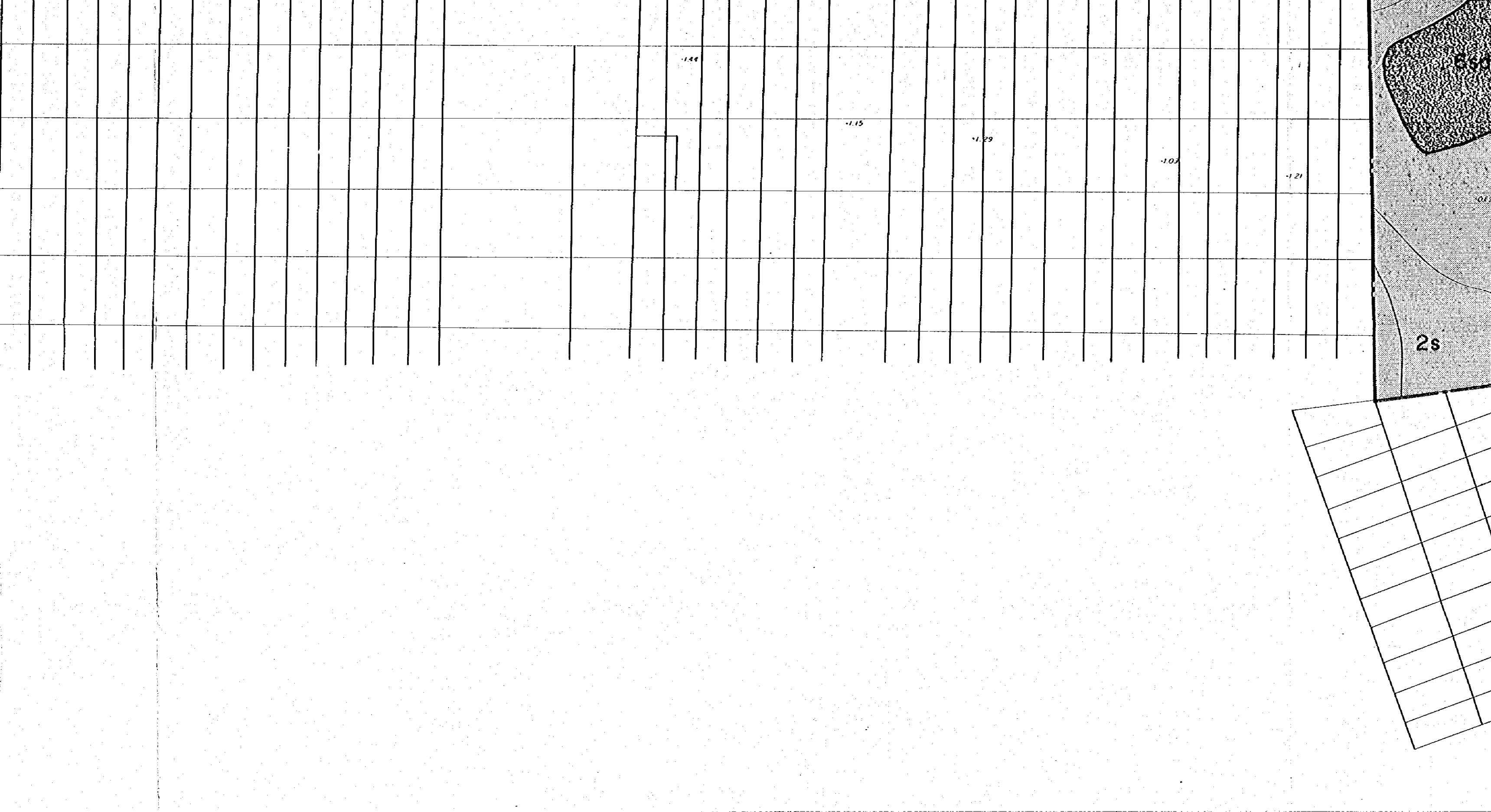
- Levelling heights      13.43
- Contours                300  
                             325
- Levelling Bench Mark    [a]
- Main road                - - - - -
- Car tracks                . . . . .
- Irrigation canal        = = = = =
- Private canal            - - - - -
- Marsh area              [hatched pattern]



SCALE 1 : 10,000







SCALE 1:10,000

