

446.000 447.000 448.000 449.000 450.000 451.000 452.000 453.000

3314.000 3314.000

3313.000 3313.000

3312.000 3312.000

3311.000 3311.000

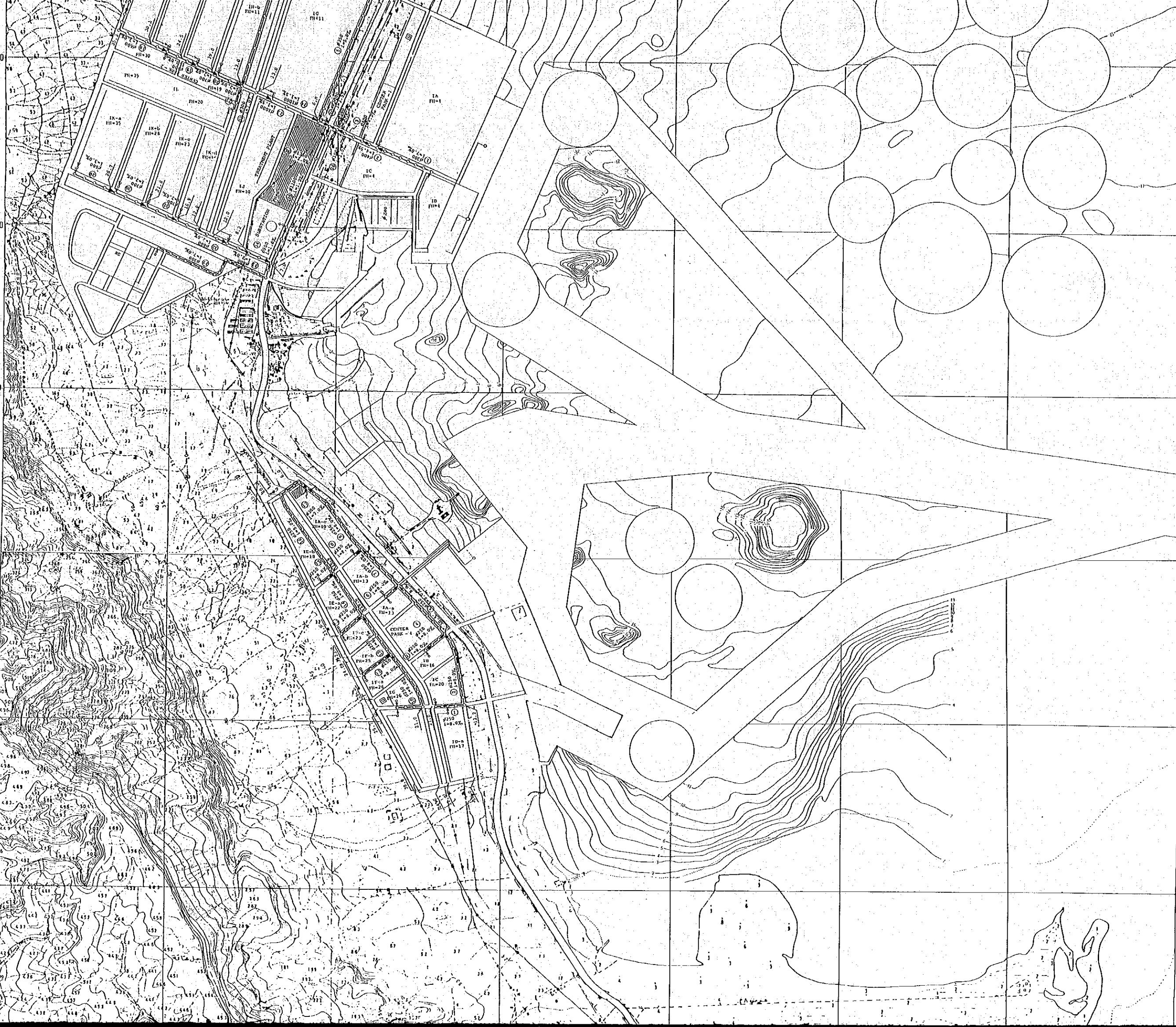
3310.000 3310.000

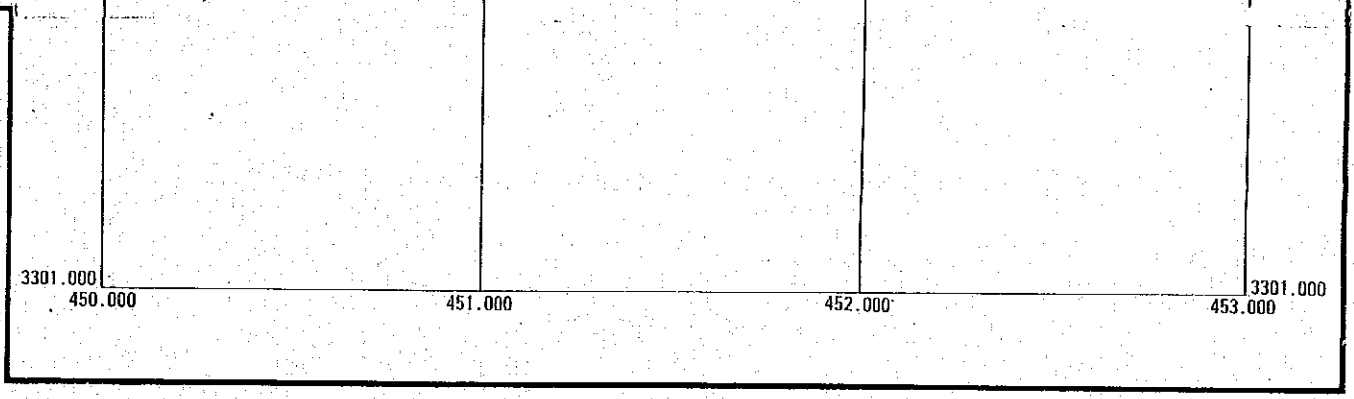
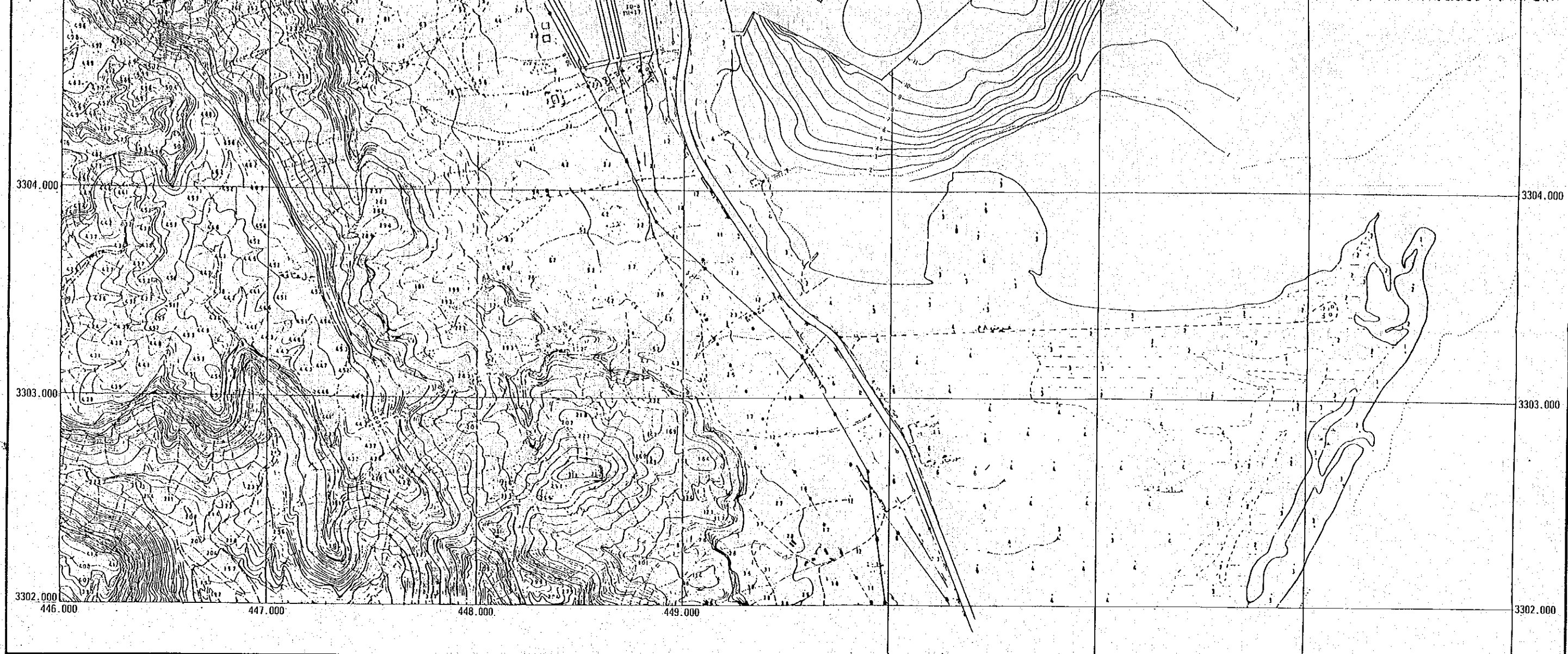
3309.000 3309.000



3309.000
3308.000
3307.000
3306.000
3305.000
3304.000

3309.000
3308.000
3307.000
3306.000
3305.000
3304.000





LEGEND

- IAa NUMBER OF BLOCK
- FH=13 FORMATION HEIGHT
- ② ROUTE NUMBER OF SEWER
- SEWER PIPES
- MANHOLE
- φ250 PIPE DIAMETER(MM)
- 1=8.0% HYDRAULICK GRADIENT
- UTILITY SPACE

Fig.8
LAYOUT PLAN FOR SEWERAGE SYSTEM (1995)

JAPAN INTERNATIONAL COOPERATION AGENCY

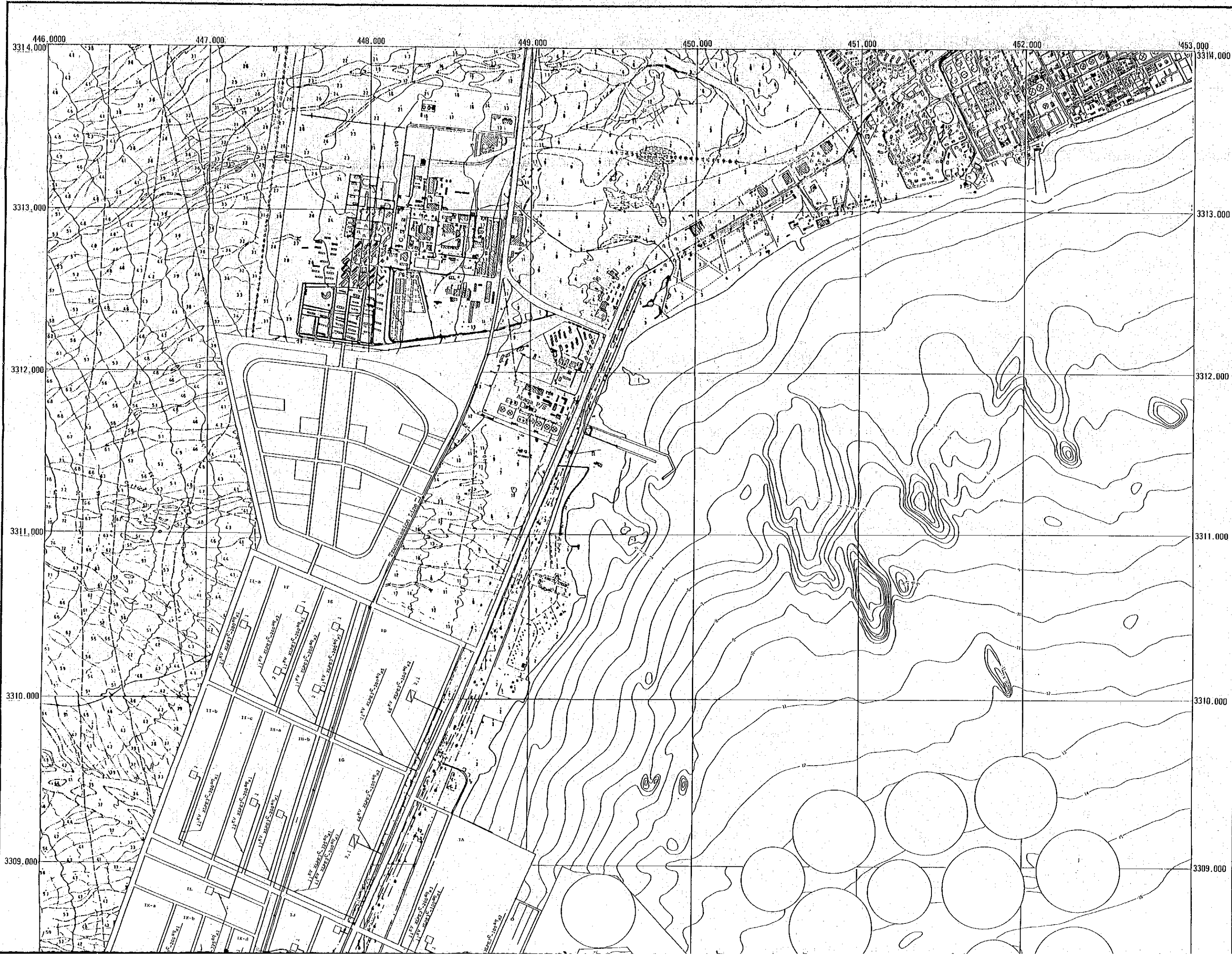
SCALE 1 : 10,000

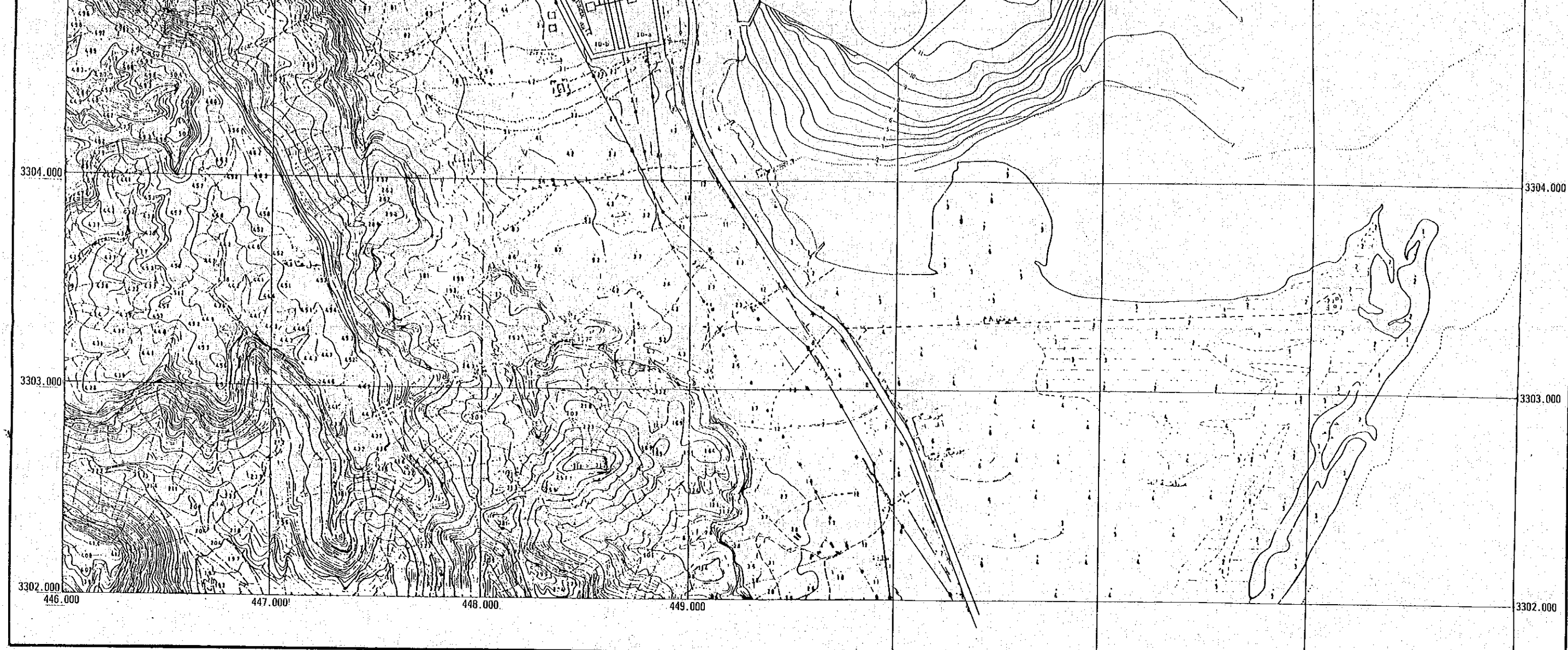
0 100 200 1,000m

国際協力事業団
15192
国書資料室蔵書

SUEZ BAY COASTAL AREA DEVELOPMENT PLAN

ARAB REPUBLIC OF EGYPT





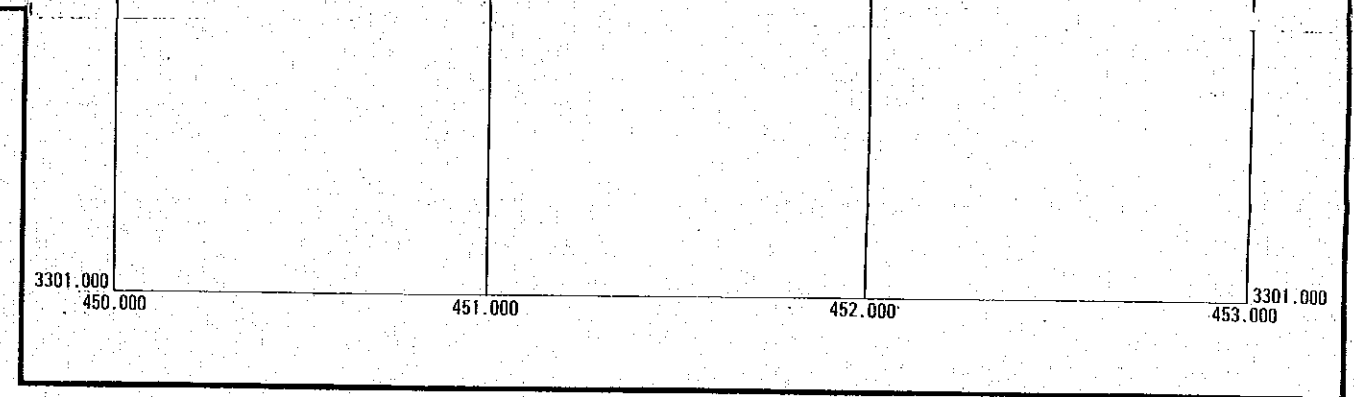
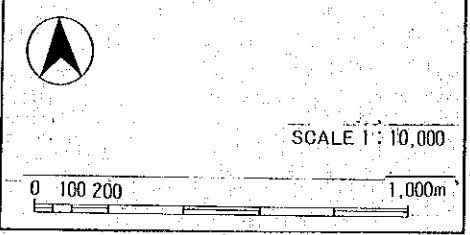
LEGEND

	200KV/66KV/11KV MAIN SUBSTATION		11KV XLPE3C-325SQ5
	66KV/11KV SECONDARY SUBSTATION		11KV XLPE3C-200SQ3
	11KV/0.38KV SUBSTATION		66KV XLPE3C-100SQ4
	TRANSMISSION LINE		11KV XLPE3C-325SQ1
			11KV XLPE3C-200SQ10
			11KV XLPE3C-100SQ1
			11KV XLPE3C-325SQ1
			11KV XLPE3C-200SQ2
			11KV XLPE3C-100SQ1
			11KV XLPE3C-60SQ1

IA-a NUMBER OF BLOCK

Fig.9
LAYOUT PLAN FOR POWER SUPPLY SYSTEM (1995)

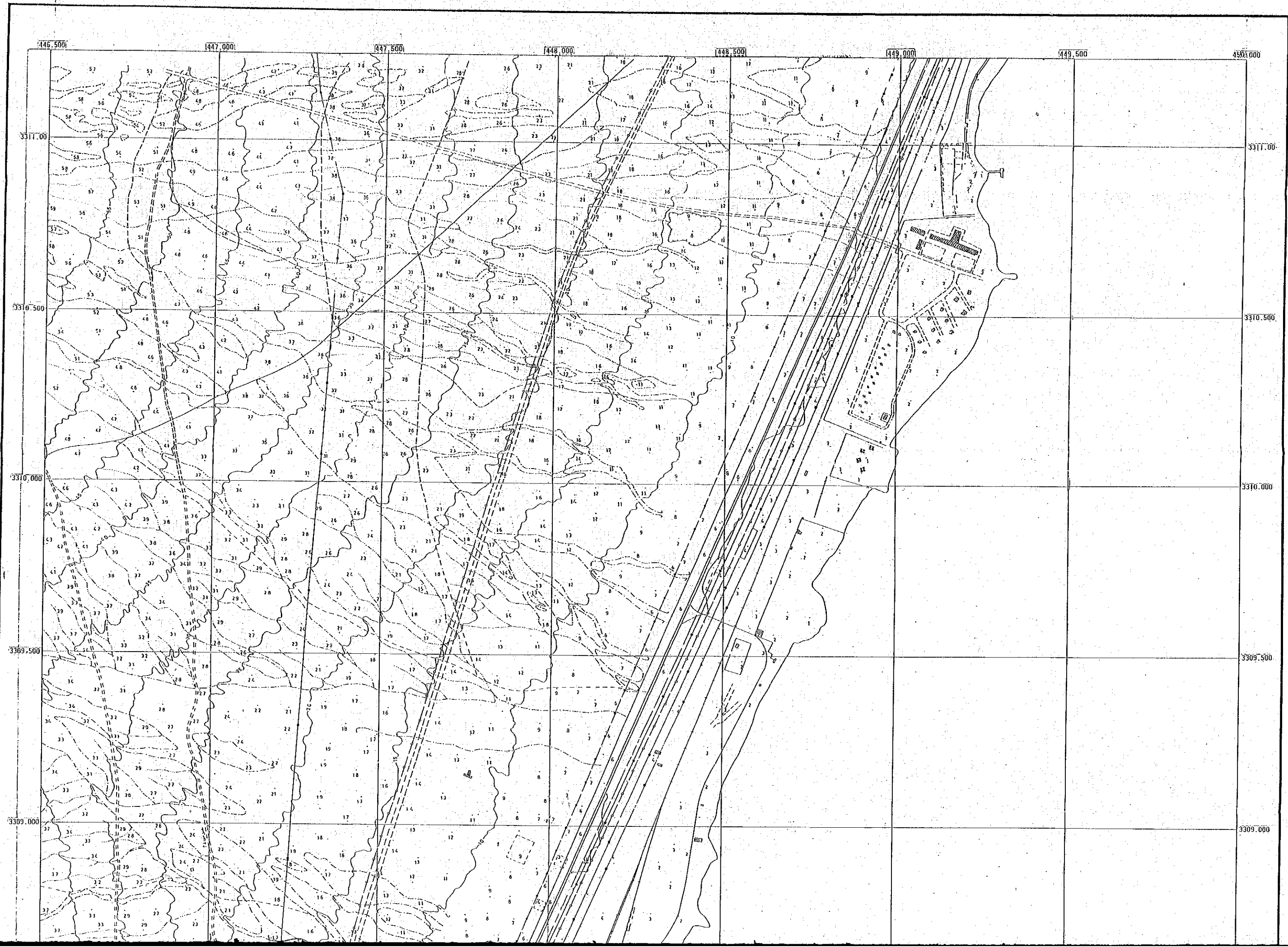
JAPAN INTERNATIONAL COOPERATION AGENCY

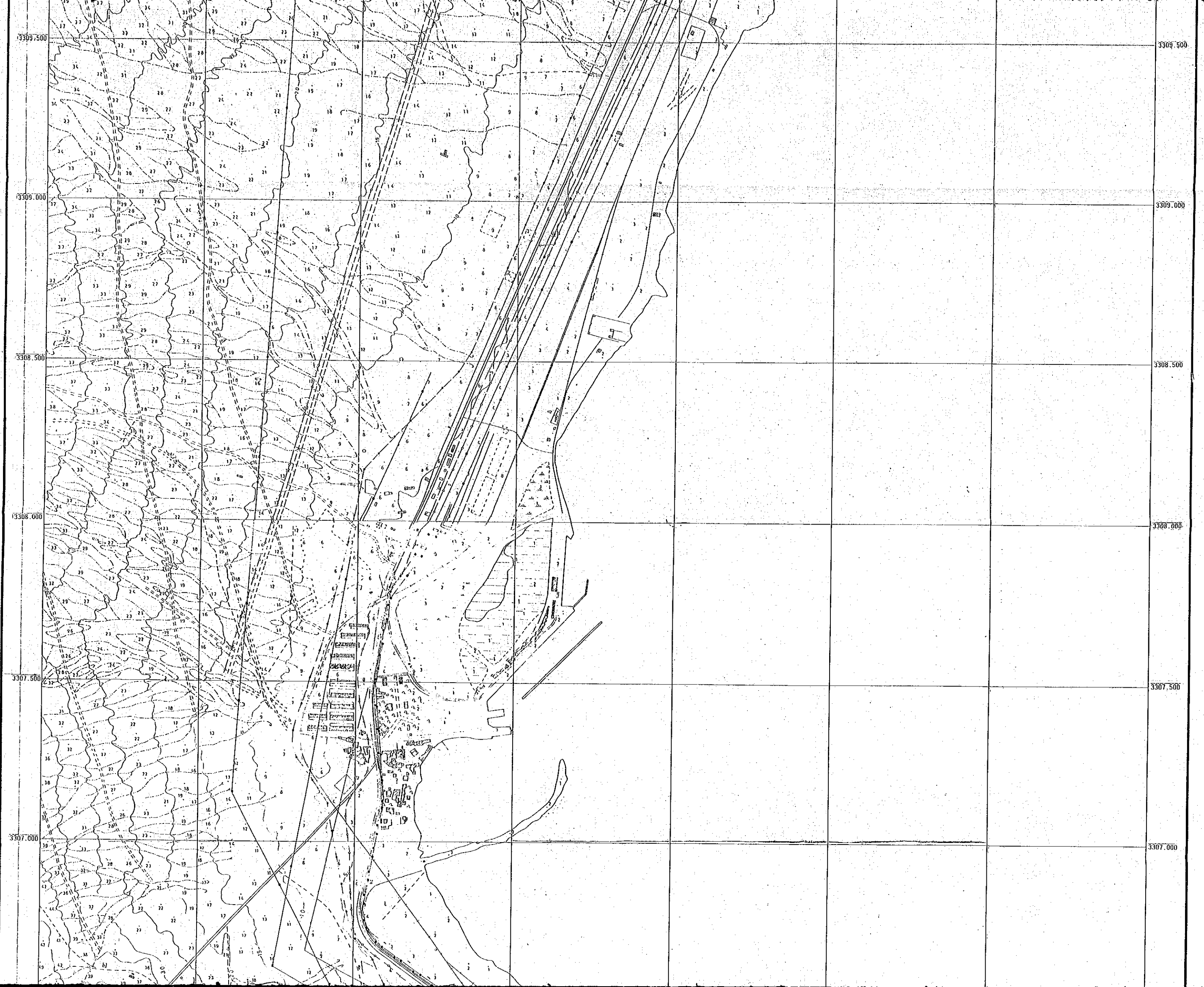


國際協力事業団
15192
図書資料室蔵書

SUEZ BAY COASTAL AREA DEVELOPMENT PLAN

ARAB REPUBLIC OF EGYPT

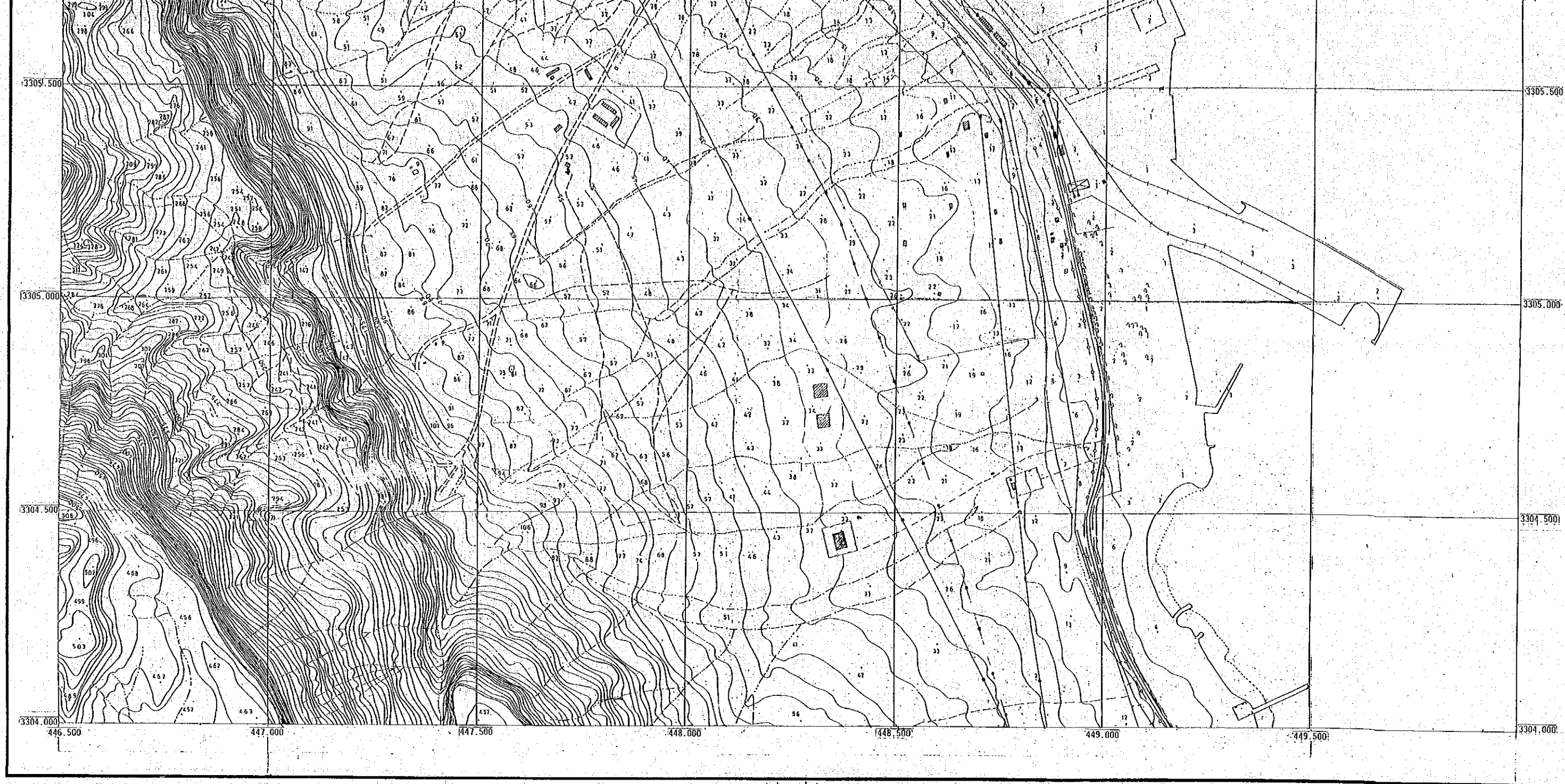




3307.500
3307.000
3306.500
3306.000
3305.500
3305.000

3307.500
3307.000
3306.500
3306.000
3305.500
3305.000





LEGEND

	SPOTHEIGHT(LEVEL)		ASPHALT ROAD
	CONTOUR LINES		MAIN TRACK
	SCRUB-PALMS-TREE		TRACK
	WIDE WADI		RAIL WAY
	NARROW WADI		CANAL OR DRAIN
	CULTIVATED LAND		CANAL OR DRAIN
	WELLS		POWERTRANS LINE
	OILTANK-WATER TANK		OIL PIPE LINE
	LAKE		EMBEDED OIL PIPE LINE
	FENCES		WATER PIPE LINE
	BUILTUP AREAS		EMBEDED WATER PIPE LINE
			TELEPHONE LINE

Fig.10
TOPOGRAPHICAL MAP

JAPAN INTERNATIONAL COOPERATION AGENCY

SCALE 1 : 5,000
0 50 500m

国際協力事業団
15192
国名漢字変換書

**SUEZ BAY
COASTAL AREA
DEVELOPMENT PLAN**

ARAB REPUBLIC OF EGYPT

