

#### 建築設計エンジニア：1名

これに対し、調査団より、通常この種のプロジェクトにおいて認められるカウンタパート研修受入れは、1～2名である旨コメントしておいた。しかしながら、本件調査が野外スタジオ等を含むセンター全体の一般的レイアウト等を含み、通常の放送関係開発調査より調査範囲が広いこと、及びERTUよりカウンタパート3名を受入れ、日本における作業に参加させる事により本件調査の円滑な実施が期待出来る事を考慮すると、ERTUの希望に出来る限り沿うよう配慮する必要があると考える。

#### 4-4 本格調査実施方法

##### 1. 事前準備

本件の調査範囲は、新テレビ・センターのスタジオ部分の建設計画に限られず、先述の如く、全体の一般的レイアウトを含むものであり、エジプト側は昭和61年度の円借款の申請に間に合わせたいとして、この調査を短期間で完了させてほしいとの強い希望を持っている。従って、ERTU側もJICAの必要とする資料の提供に積極的に協力する構えで居り、事前調査団が提出した質問状に対する回答の一部は既に出てきており、残りは在カイロJICA事務所を通じて近々届くことになっているので、これらの回答の十分な吟味と、今後調査を必要とする項目の洗い出し等を行い、調査内容、調査順序等について具体的に纏めておくことが望ましい。

##### 2. 現地調査

現地調査は、事前に準備した調査順序にもとづき、必要な調査を行うと共に、エジプト側カウンタパートとの討議等を通じ、彼等の考えを的確に把握、分析する。調査に必要な公式書類、資料等の殆どがアラビア語であるので出来得る限り関係者との質疑応答のなかで必要なデータ、情報等を収集する事を心掛けるべきである。

##### 3. 国内作業

現地調査で収集した資料、協議結果の詳細な解析作業と全体的分析作業を行い報告書をまとめる。

#### 4-5 本格調査実施に係わる提言

今回、事前調査団はERTUの「新テレビ・センター建設計画」構想について時間の許す限りに於いて多角的な調査を実施した。その結果、ERTU自体の体質改善と体制整備に係わる自主努力の必要がある事を痛感した。しかし、彼等にしてみれば改善・整備の為に具体的方法に関する実務知識と経験不足のため成果を上げ得ない、と言うことがある事も事実である。従って今度の本格調査を通して彼等に対し努力目標を提示しその方向付け、効果的実践方法を指導して行くことが必要である。このような方法をとる事に依って、この種の技術移転の実施は

もとよりプロジェクトへの参加感を持たせる事が出来、技術協力の効果をより高める事が期待出来ると思慮される。以上の他、本格調査に当たって特に留意すべき幾つかの点を以下に述べる。

1. 本件計画調査に際しては、今後のエジプト経済・社会等の発展動向に関する十分な分析に基づき、合理的、かつ実現性の高いものに纏めるよう留意する必要がある。
2. エジプト側が力を入れている教育・文化番組の制作・放送を主体とする調査であるので、教育・文化省の考え方も十分聴取する必要がある。
3. 新テレビ・センター全体のレイアウト、スタジオ・コンプレックスの建築デザイン、センター全体及びコンプレックス内部の動線設計等については、エジプトの国情（社会、労働慣行等）あったものとする事が望ましく、この面の十分な分析、調査が必要である。
4. エジプト側としては、新テレビ・センターは、独立採算制を維持したいとの希望を有している。これを踏まえて、新テレビ・センターで制作した番組の外国への販売、教育・文化番組の放送に対する教育・文化省からの補助金収入の可能性等、各種の収入源の確保と業務の効率的運営による支出の抑制について、種々の角度から検討する必要がある。



添 付 資 料



SUPPLEMENTARY TERMS OF REFERENCE

FOR

NEW TELEVISION CENTER AT 6TH OCTOBER CITY

FOR

EDUCATIONAL AND CULTURAL TV PROGRAM



**EGYPTIAN RADIO & TELEVISION UNION**

CAIRO- EGY PT

1. BACKGROUNDS OF THE PROJECT IN RELATION WITH  
GENERAL TV EXPANSION PLAN IN EGYPT

Egyptian Radio and TV Union (ERTU) is now making transmission by its 1st and 2nd channel for total about 20 hours per day. Number of viewers in Egypt has been steeply increased up to 27 million with 4.3 million TV receivers, while the number is still increasing year by year.

By this way, television has become very popular in Egypt, not only to cover major cities but almost throughout the country, even in the rural areas having 2 percent of population, which plays a greatly important role in the people's life, social and national income.

While the demand for various programs specially own-made educational and cultural TV programs become strong, existing TV program production facilities are not enough or capable to cope with such demand in satisfactory manner.

In order to meet these demands and realize effective TV operation, ERTU has made the following expansion plan for TV Broadcasting:

- (1) Expansion of TV transmitting network covering the whole country. (This has been almost completed for 1st and 2nd channel.)
- (2) Construction of new TV program production center to enrich educational and cultural TV programs.
- (3) The possibility of establishing a new TV channel in the future keeping pace with the increase of TV programs specially for educational or cultural purposes.

The project which we have requested the Japanese Government to execute the feasibility study on a grant basis is above item (2).

## 2. OBJECTIVES OF FEASIBILITY STUDY

The scope of the project and the objectives of Feasibility Study will be basically limited to the New TV Center to be constructed at 6th October City.

However, study would be necessary in relation to ERTU's total Organization and facilities ( existing TV transmitting network etc.) for examination of the effect brought by this project.

We expect that the Feasibility Study shall include consideration of the following items:

### (1) Technical and Operational Feasibility

Check of the whole facilities to be included in the New TV Center project, which are described in the Terms of Reference, by the view points of scale of studios, scope of equipments, staffing program and project schedule etc. and recommendation of Alternatives.  
It should include the basic design.

### (2) Financial Study

Examination of the expected financial conditions of the New TV Center as self-dependent unit of ERTU, and check of income and outgo in relation with the total scale of the project.

Main items of income and outgo are expected as follows:



- (Income) a. Governmental sources
- b. Sales of programs
- c. Others
- (Outgo) a. Project cost
- b. Program production cost
- c. Personnel expenses
- d. Other operational cost

It is expected to include the recommendation and suggestion for establishing an effective organization from economical and operational point of view.

### (3) Economic Analysis

Study about economic effect, namely how much impact this project will give to increase G N P of the country.

In this respect, the effect should be studied by the increase of educational and cultural TV programs which can be received by 27 million people through the existing 1st and 2nd channel TV transmitting network, and also can be delivered by other new method of distribution.

The method which ERTU is now planning to distribute those educational and cultural TV programs are as follows:

- a) Additional transmitting hours on 1st and 2nd channel which is expected about 10 hours per day.
  - Educational TV program for the working students to be transmitted in early time in the morning.
  - Schooling for groups of students using TV programs.
- b) The possibility of new educational channel in future covering the whole country.

- c) Batch system of Educational TV programs in tapes to schools, institutions and also to foreign countries.

## ANNEXES

- Annex 1 Project objectives and features for the new TV center of the 6th October City dated Feb. 4, 1984.
- Annex 2 Development Survey Questionnaire delivered through the Egyptian Ministry of Planning and International Cooperation in March, 1984.
- Annex 3 General Maps
- Location of the 6th October City on Egypt map.
  - Location of new TV center at the 6th October City map.
  - ERTU TV Transmitting Network including TV transmitters and microwave network. (This network distributes TV Program 1 and Program 2 and sound broadcast programs.)
- Annex 4 Background General Information based on ERTU Information Bank 1982/83.

EGYPTIAN RADIO AND TELEVISION UNION (ERTU)

NEW T.V. CENTRE AT 6th OCTOBER CITY

=====

Project Objectives And Features

-----

Introduction :

The new T.V. Centre will be one part of new educational T.V. Broadcasting network for promoting educational and culture programmes and to contribute in developing living standards throughout the Country.

This centre also has to support the Egyptian production of drama, varieties, children and other programmes necessary to cover exchange and marketing increase of demand.

The transmission part of the above network will be included within ERTU plans for expanding of transmitting facilities.

Main Objectives :

- 1) Construction of a completely equipped T.V. Production studio complex.
- 2) Establishing a new economically self dependent Unit to run the project on the basis of most effective management and operation concepts. This unit will be a new division within ERTU organization.

Production Prospectives :

For prefeasibility study purposes, the yearly production rates can be assumed as follows :

- a) For educational programmes.

An estimate of 1500 Hour / Year with an ultimate expansion possibility of up to 2400 Hour / Year.

- b) For Drama and varieties programmes.

An estimate of 600 Hour / Year with an ultimate expansion possibility of up to 1000 Hour / Year.

These rates are preliminary estimates which shall be verified by the study.

**Project Main Features :**  
-----

**\* Location :**  
-----

The assigned project location-which already secured by ERTU-will be in 6th October City, at about 25Km to the west of Cairo.

**\* Area :**  
-----

Site area will be two square kilometers.

**TIME FRAME :**  
=====

**Phase One (3Year Period) :**  
-----

To implement the project infra structure and 40 % of production facilities .

**Phase Two (3Year Period) :**  
-----

To implement the remaining 60% of production facilities:

**Project Main Facilities :**  
-----

**a) Studio Complex :**  
-----

This will include the following :

**1) The T.V. Studios.**

- \* Drama production studios.
- \* Educational Studios .
- \* Varieties studios.
- \* Transmission studios.

**2) Technical Services.**

- \* VTR recording and Editing services.
- \* Animation centre.
- \* Marionette centre.
- \* Dubbing and sound sync. Studios.
- \* Photographic and Film developing centre.
- \* Libraries for video and audio tapes.
- \* Maintenance labs.

**3) Production Services :**

This will comprise:

- \* Stores for wood, clothes accessories...etc.
- \* Workshops for scenaries (wooden, plastic,...etc).

**4) Transmission and communication system.**

b) Administrative Buildings

c) Power House and General Services :

- \* City mains systems.
- \* Power generator plant for emergency use.
- \* Air conditioning system.
- \* Security and alarm systems.
- \* Central time system.
- \* Telephone and communication system.

d) General Purposes Facilities :

This will include :

- \* Field production areas (parts of cities, forests, deserts, villages, children gardens, etc).

These areas will also be used for recreation and tourist attraction, as additional source of income.

- \* Parking areas,
- \* Residence centre for staff and visitors.

Proposed Working Plan:

This will include the attached proposed bar chart for project general time scale and the expected phases of the study.

A) Proposed Time Scale.

Activity	Time (Years)							Notes	
	1984	1985	1986	1987	1988	1989	1990		1991
1) Feasibility Studies	One Year								
2) Specifications and design.		6 M							
3) Tendering and contracting.		6 M							
4) Phase One Construction.				3 Year					Starting production with 40% capacity.
5) Phase Two Construction.						3 Year			Full production capacity.

**B) Expected Phases Of Feasibility Study:**  
=====

These phases will include the following :

- 1) Local survey, inquiries, and questionnaires.
- 2) Data Analysis.
- 3) Final Definition of direct tangible project objectives.
- 4) Preliminary Alternatives and Recommended Solutions.
- 5) Final detailed study and Recommendations.

PROPOSAL FOR DEVELOPMENT SURVEY  
TO BE CARRIED OUT BY THE JAPANESE  
GOVERNMENT DURING JAPANESE FY 1983.

=====

A. Title of the project.

- \* New Television Centre, at 6th October City.

B. Requesting body of the project.

- \* Ministry of Information, Egyptian Government.

C. Executive body of the project

- \* Egyptian Radio & T.V. Union (E.R.T.U.), Cairo.

I. Summary of the project.

1] Objective and contents of the project

(Surveys for formulating the Master plan, carrying out Feasibility Study and laying out the Basic Design).

- \* Establishment of new Educational T.V. Broadcasting Network.

Survey, Feasibility study and Basic Design to be made by specialised Japanese Consulting Organisation.

2] Order of priority among the projects with justification.

- \* One of the important projects to promote the Educational and culture standards in Egypt.

3] Expected starting period and duration of survey.

- \* During 1984, for One Year.

4] Estimated cost of the project and the sources of financing (foreign and local currency portions).

- \* This to be defined by feasibility studies.

\* Preliminary studies estimate this cost by about 30 to 40 million egyptian pounds, 50% of which is in foreign currency.

- \* The financing hoped to be through foreign cooperation programs.



5) History of the request

Previous steps, if any, to carry out the project, i.e., if any previous requests have been submitted to any external source for the same purpose?

\* No .

6) Were or are there any assistance from other countries or international organizations extended to associated projects ?

\* No , up till now

7) Providing basic data and materials, such as topographical maps and meteorological tables etc., prepared by the Egyptian side covering the location of the project in question.

\* Attached a map for the location

II. Background of the request

In case the proposed project is included in the national development plan, please indicate;

1) The official title of the development plan :

\* 5 Year plan of 1982 - 1987 for E.R.T.U., and will be continued in 87 - 92 plan.

\* Code number in the 82/87 plan is ( 12003 )

2) Objectives and contents of the plan

\* Projects necessary to support and expand Radio & T.V. Services among the whole land of Egypt.

And also to cover expanding requirements for

Educational, Children, Drama, and Variety programs!

3) Duration of the plan

\* 5 Years

4) Rank of the proposed project among others included in the plan

\* One of the most important projects in the plan.

5) Are there any assistance requested from other countries of multilateral organisations to be extended to the projects of the plan ?

\* No, up till now

## Information Bank

The Egyptian Radio started transmission for the first time on 31<sup>st</sup> May, 1934 with two programmes only : The General Arabic Programme and the Local European Programme, in collaboration with Marconi Company provided that the views expressed be those of the government. In 1947, the Egyptian Government took over the administration of the Egyptian Broadcasting Service.

The six local broadcasting networks comprise 14 local stations. The seventh network, that of overseas programmes, comprises 38 services. Transmission hours in the year 1982-83 totalled 71262 hrs. 50 min. at a daily average of 195 hrs. 14 min.

The daily average transmission of the local networks is 143 hrs. 55 min. distributed over various targeted items.

Entertainment 46.33 % ; culture and religion 33.09 % ; news 9.35 % ; advertisements 0.22 % ; and services 7.01 % .

The daily average transmission of the seventh overseas network is 51 hrs. 19 min. It transmits in 31 languages to 9 geographical zones all over the world with the following distribution of items :

Entertainment 30.73 % ; Culture & Religion 40.09 % ;

News 26.50 % ; Teaching Arabic through English 2.68 % .

News bulletins, both local and overseas, total 57, together with 67 news summaries on both Radio & T.V.

Studios number 43 for Radio and 12 for T.V., serving all purposes.

Nation-wide surveys in 1983 show that more than 98 % of radio listeners have been regular audience for over 15 years.

The Radio library contains some half a million tapes on which rare and important material is recorded, representing a rich broadcasting heritage. The T.V. Library contains 3000 foreign films and serials.

Programmes represent 29,12 % of the total number of Radio transmission hours whereas the percentage rises to 44,66 % on the T.V. AS for the sum total of all kinds of programmes and material, the differential co-efficient between Radio & T.V. reached 41,10 % in 1982/83, a fact which indicates that each of the two media has its own particular character as far as the type of programmes is concerned.

A follow-up was effected on 30,734 hours of Radio transmission at a daily average of 61 hours (58,50 % of the total number of transmission hours). 1307 analytical reports were submitted with a view to promoting radio service, both in form and substance.

\*\*\*\* \* \* \* \* \*

Television started transmission in July 1960. Transmission hours totalled 9002 hrs. 18 min. in 1982/93, at a daily average of 24 hrs. 40 min. 45,40 % of which was on Channel 1, and 45,60 % on Channel 2.

The distribution of programmes was at the following ratios:

Entertainment and Drama	42.37 %	Cultural & Religion Prog.	27.24 %
News	11.47 %	Services	10.81 %
Educational Prog.	5.17 %	Advertisements	2.94 %

The average viewing hours for every person are 3 hrs. 49 min. daily. Two-thirds of viewers watch Channel 1, and one-third watches Channel 2. T.V. productions in 1982/83 cost L.E.6.833,183 and were shot in studios 1,2,5,6 & 10 with an aggregate duration of 310 hours.

In addition, a number of T.V. films was produced as follows :

18 T.V. films                      26 documentary films about celebrated personalities;  
36 documentaries about monuments and antiquities, four of which  
were co-productions.

In the same year, Egyptian T.V. projected 759 foreign films, 148 foreign serials, 226 long and documentary Egyptian films, 9 musicals, 7 T.V. soirées, 68 Egyptian serials, and 32 plays in Arabic translated from international literature.

The rate of foreign programmes telecast on Egyptian T.V. is 28.82 % of the total, 13.04 % of which are on Channel 1, and 47.65 % on Channel 2.

During the month of Ramadan, transmission hours are more than any ordinary month ( here May 1983 ) by 12.51 %. Channel 1 transmits more than channel 2 by 17.63 %.

Follow-up was effected on 93,01 % of T.V. transmission hours (8373 hrs.). 931 reports were submitted to the top administration with suggestions for the improvement and development of programmes, both in form and substance.

The Federation's revenues in 1982/83 amounted to L.E. 47,000,000, 24 % more than the previous fiscal year 1981/82.

Revenues accrued from advertisements and marketing reached L.E. 23,000,000, while expenses on informational - educational services and electricity fees reached L.E. 24,000,000.

Income from Radio & T.V. advertisements reached L.E. 17 million, 7 % of which came from Radio. Local advertisements represent 85 % of all broadcast advertisements.

Channel 1 telecasts 80 % of all T.V. advertisements, while the Middle East service broadcasts 95 % of all Radio advertisements.

The total income of marketing amounts to L.E. 6 million, 89 % of which comes from T.V., 4.2. % from Radio, and the rest from commissions and marketing services. Marketing hours in 1982/83 reached 5612 hrs.

The T.V. deals with 20 advertising agencies, whereas direct dealings between advertisers and the Federation's advertising sector did not exceed 3 % .

Current rates of advertisements :

<u>Duration ( seconds )</u>	<u>ordinary time</u>	<u>privileged time</u>
10	150	220
20	220	320
30	300	450
40	400	670
50	500	800

The 1982/83 revenue of Sawt El-Kahira ( the Voice of Cairo ) co. for Audio-Visuals reached L.E. 4,358,000, being the price of 2,724,780 cassette tapes, 44, 311 records, in addition to the assembly of sets.

The Radio & T.V. Federation uses the computer and microfilm systems to cope with recent technological developments.

The Federation staff members till 30th June, 1983 reached 14875 persons, 31.16 % of whom are females. The break-down of those members in the Federation's various sectors is as follows :

Engineering	37.83 %
Administration & Secretariat	9.69 %
T.V.	27.90 %
Radio	21.83 %
Financial Affairs	2.75 %

The Federation's Public Service Bureau received 339 complaints and queries, 124 of which have been resolved, while the rest are under consideration. The Bureau will publish a guide-book for the staff and clients of each sector, with a view to facilitating procedures and dealings.

The Medical Care Fund was visited by 49508 patients, 6600 ( 13.33 % ) of whom were referred to specialists.

The Federation's In-Service Training Institutes held 68 courses during 1982/83 attended by 1816 trainees, 10.64 % of whom are Federation staff members.

A specialized research team undertakes periodical field studies to gauge opinions of listeners and viewers, the more watched channels and the follow-up of programme evaluation. The results of those surveys constitute major criteria in programme planning with a view to improving the quality of programmes, both in form and substance. The research team sometimes collaborates with other specialized centres - such as the National Centre for Social and Criminal Research and the Middle East Consultant Group ( MEG ) - in conducting joint research work related to Radio and T.V.

In 1982/83 the News & Information Dept. received more than one million cables from 30 local, Arab and international news agencies. Important cables are translated and submitted to the Federation's top officials. There is a listening-in section which monitors 23 radio stations and writes some 10,000 circulars, commentaries and political analyses which are distributed to competent in the Radio, T.V. and Ministry of Information.



The Egyptian Radio and T.V. Federation is full or associate member of 8 regional and international unions. It participates in their conferences and General Assembly meetings so as to develop all our information media, to promote cooperation and friendship, to boost the exchange of expertise in the domains of Radio and T.V., to get acquainted with the latest technological developments, and to explore the possibilities of signing agreements and implementing protocols in the field of information

These Unions are :

- |  |                |
|--|----------------|
| 1- Arab States Broadcasting Union.           | ( A.S.B.U. )   |
| 2- African Nations Radio & T.V. Union.       | ( U.R.T.N.A. ) |
| 3- Asian Broadcasting Union.                 | ( A.B.U. )     |
| 4- European Broadcasting Union.              | ( E.B.U. )     |
| 5- International Radio & T.V. Organization.  | ( O.I.R.T. )   |
| 6- International Broadcasting Institute .    | ( I.B.I )      |
| 7- International Electricity Centre.         | ( I.E.C. )     |
| 8- Islamic States Broadcasting Organization. | ( I.S.B.O. )   |

Expenditures on Radio Engineering investment projects amounted to L.E. 40 million in 1982/83 .

Radio Engineering stations number 92 with a total capacity of 9031 Kilowatts .

T.V. Stations number 50 with a total capacity of 258.2 Kilowatts .

\*\*\*\*\*

THE RADIO & TELEVISION FEDERATION'S  
ORGANIZATIONAL FRAMEWORK

According to Law No. 13 of 1979

---

The President of the Board of Trustees

---

The President of the Board of Trustees shall supervise the affairs of the Federation and its various Sectors, as well as coordination between them. He shall ascertain that functions are performed adequately and ensure the implementation of the Board's resolutions. He shall also define the responsibilities of Sector heads. He shall preside over the Board of Trustees and the Federation's General Assembly Meetings, and shall represent the Federation at conferences and sign contracts on its behalf. In addition he shall assume all other responsibilities as provided in Article 9 of Law No. 13 of 1979.

Public Figures Members of the Board  
of Trustees

---

A) Composition :

---

- \* A number of public figures engaged in intellectual, religious, artistic and scientific activities shall be appointed as members, provided that they constitute a numerical majority on the Board.
- \* Appointed heads of the Federation's main Sectors.
- \* Head of the State Information Service.

B) Responsibilities

---

- 1- Laying down the Federation's general policies, approving future plans, and drafting alternatives to ensure that the two services (Radio & T.V.) be a platform for free opinion as well as opposing views.

2. Cherishing spiritual and moral precepts, promoting intellectual, artistic and literary standards, elaborating, and deepening the concept of democracy.
3. Ensuring adequate performance in both Radio & T.V. services.
4. Following up & evaluating the Federation's Sectors and Organs.

( Article 6 of Law No 13/1979 )

#### Appointed Members of the Board of Trustees

##### A) Composition

The Board of Trustees, headed by the President of the Board, shall also include in its membership the appointed heads of the Federation's main Sectors, namely

- \* Head of the Financial & Economic Affairs Sector;
  - \* Head of the Radio Sector;
  - \* Head of the Television Sector;
  - \* Head of the Radio Engineering Sector;
  - \* Secretary-General of the Radio & Television Federation;
  - \* Chairman of Sawt El- Kahira Co. for Audio-Visuals;
- and \*
- \* A number of Federation employees to be appointed by a Board resolution

responsibilities :

An appointed member on the Board of Trustees shall undertake the administration of one of the Federation's Sectors in accordance with the policies, rules and decisions laid down by the Board.

He shall assume all financial and administrative responsibilities necessary for the discharge of his duties.

He shall submit a detailed and comprehensive monthly report on the activities within his sector to the Board.

He may delegate one or more officials to perform some of his duties.

He shall implement the Board's decisions and policies, in addition to setting the regulations organizing work in his respective sector.

He shall set up a Committee of the chiefs of the Sector's Departments to assist him in running daily business and to propose plans of action in conformity with the Board's decisions.

## Membership of the Federation's General Assembly

---

### Composition :

- A General Assembly for the Federation shall be formed under the chairmanship of the President of the Board of Trustees.
- The General Assembly shall consist of :
  - \* Members of the Board of Trustees ;
  - \* The Minister in charge of Radio & Television Federation Affairs ;
  - \* The Minister of Economy ;
  - \* The Minister of Foreign Trade ;
  - \* The Minister of Planning ;
  - \* The Minister of Finance ;
  - \* The Minister of Social Affairs ;
  - \* The Minister of Foreign Affairs ;
  - \* The Minister of Education ;
  - \* The Minister of Culture ;
  - \* The Minister of People's Assembly Affairs ;
  - \* The Minister of Health ;
  - \* The Minister of Youth ;
  - \* The Minister of Communications ;
  - \* The Deputy of the Holy Azhar ;

and a number of persons experienced in the spheres of information and related activities, to be appointed by a Prime Minister's decree.

Responsibilities :

1. Approval of the Annual Report on the activities of the Federation and its affiliated companies.
2. Approval of the Auditor's Report .
3. Endorsement of the Federation's General Budget.
4. Appointment of the Auditor and Fixing his remuneration.
5. Authorization of the use of allotments for purposes other than those to which they are allocated in the Federation's budget.
6. Approval of the annual budget, the final accounts, profit-and-loss accounts, and determination of reserves, allocations and profit distribution.
7. Approval of the increase of the Federation's capital and determination of financing sources.
8. Approval of proposals to establish or share in joint ventures, to merge or liquidate companies owned by the Federation.

( Article 29 of Law No. 13/1979)

# EGYPT T.V.

7 T.V — Sets: 3.850.000 (incl. 350.000 Colour sets) — Colour: SECAM. System: B.  
 EGYPTIAN RADIO AND T.V. CORPORATION (Gov.)  
 Addr: T.V Bldg, Cornish El-Nil, Cairo tel: 757155  
 Cable: Cibrotev. Telex: 92152 Karadun.  
 L.P.: Chmn of TV Prgr Sector: Samia Sadek, Chmn of economic  
 Sector: Mohamed Abd-El-Fatah

Stations	KW	Pol	Stations	KW	P
1st Prgr	ch (ERP)				
DAMIETTA	4 0.9/0.09	H	QUSEIR	7 50.2/5.02	H
CAIRO	5 200/20	H	MAHALLA	8 1600/160	H
PORT SAID	5 10/1	V	EL-MINYA	8 165/165	V
NAG-HAMADI	5 6/0.6	H	IDFO	8 23/2.3	H
ASWAN	5 10/1	H	QENA	9 30/3	H
SIDI BARRANI	5 11.2/1.12	H	SALUM	9 6.9/0.69	H
HURGHADA	5 89/8.9	V	RAS GHARIB	9 66.4/6.64	H
ALEXANDRIA	6 110/11	H	ASSUIT	10 61/6.1	H
BENI-ALI	6 8/0.8	V	KOM-OMBO	10 40/4	H
ISNA	6 18/1.8	H	MATRUH	10 51.9/5.19	H
EL-ARISH	6 182/18.2	V	EL-KHARGA	10 10/1	V
SUEZ	7 20/2	H	ISMAILIA	11 260/26	V
SOHAG	7 52/5.2	H	BENI SUEF	11 80/8	V
EL-DABA	7 2.95/0.295	H	LUXOR	11 19/1.9	H
			SAFAGA	11 50.2/5.02	V

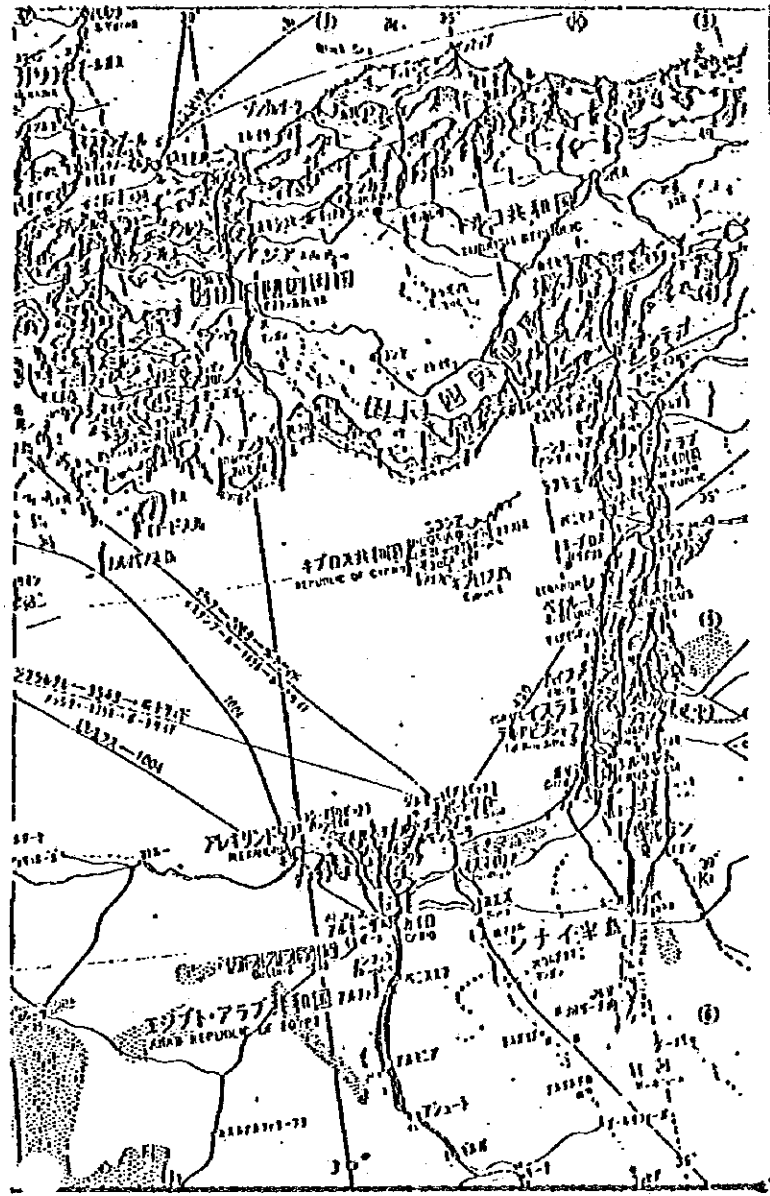
D. Prgr: 800 - 1100, 1300 (Fri, Sun 700) - 2100.

Stations	KW	Stations	KW	
2nd Prgr	Ch (ERP)	Pol	Ch (ERP)	
DAMIETTA	2 0.9/0.09	H	CAIRO	9 200/20
SUEZ	5 20/2	H	ISMAILIA	9 260/26
EL-MINYA	5 165/16.5	V	BENI-ALI	9 8/0.8
ASSIUT	6 61/6.1	H	ISNA	9 18/1.8
QENA	6 30/3	H	ASWAN	9 10/1
PORT SAID	7 10/1	V	MAHALLA	10 1600/160
BENI-SUEF	7 80/8	V	EL-ARISH	10 182/18.2
LUXOR	7 40/4	H	ALEXANDRIA	11 110/11
KOM-OMBO	7 40/4	H	SOHAG	11 52/5.2
NAG-HAMADI	8 6/0.6	H	IDFO	11 23/2.3

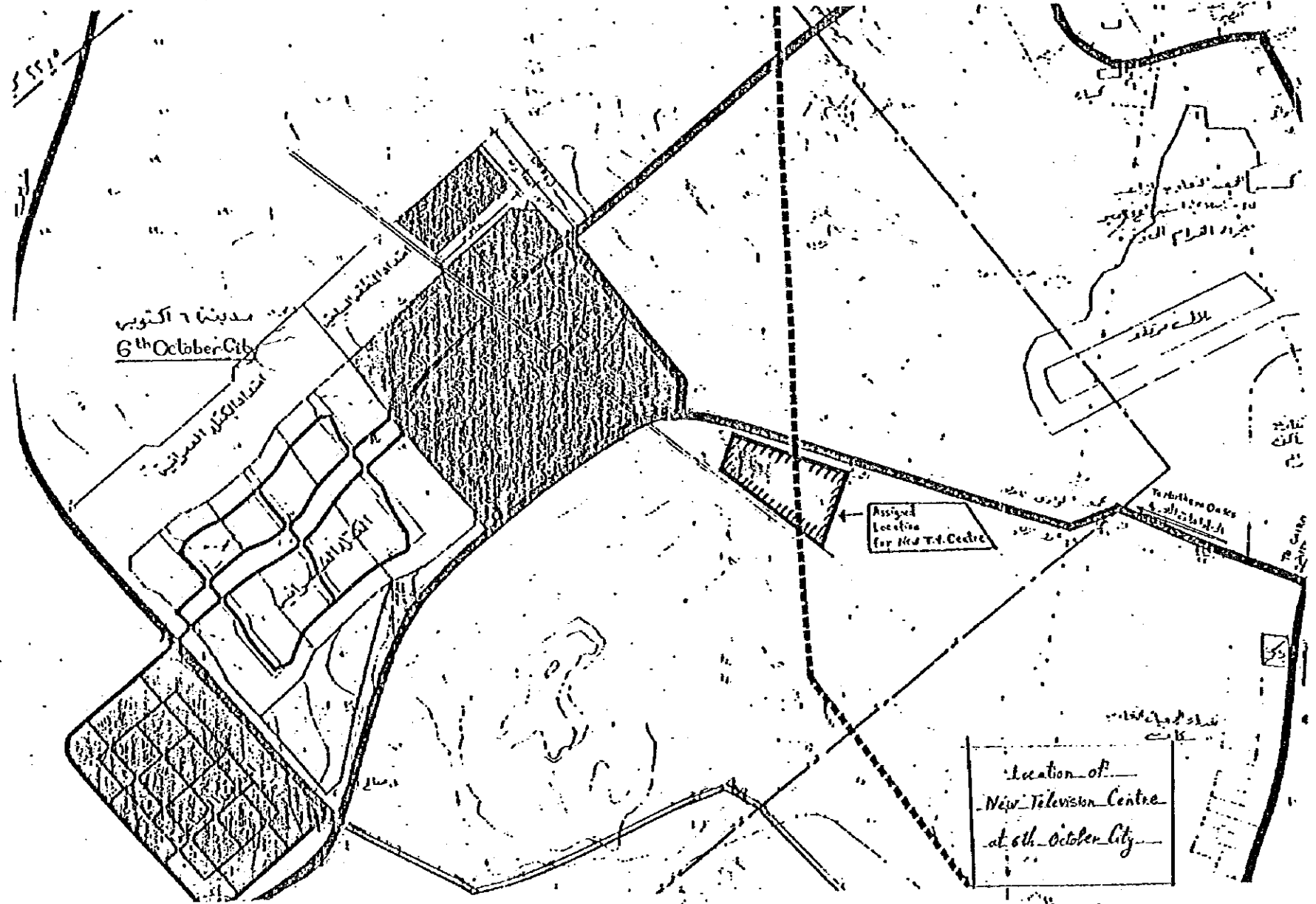
D. Prgr: 1100 (Sun, Fri 700) - 2130.



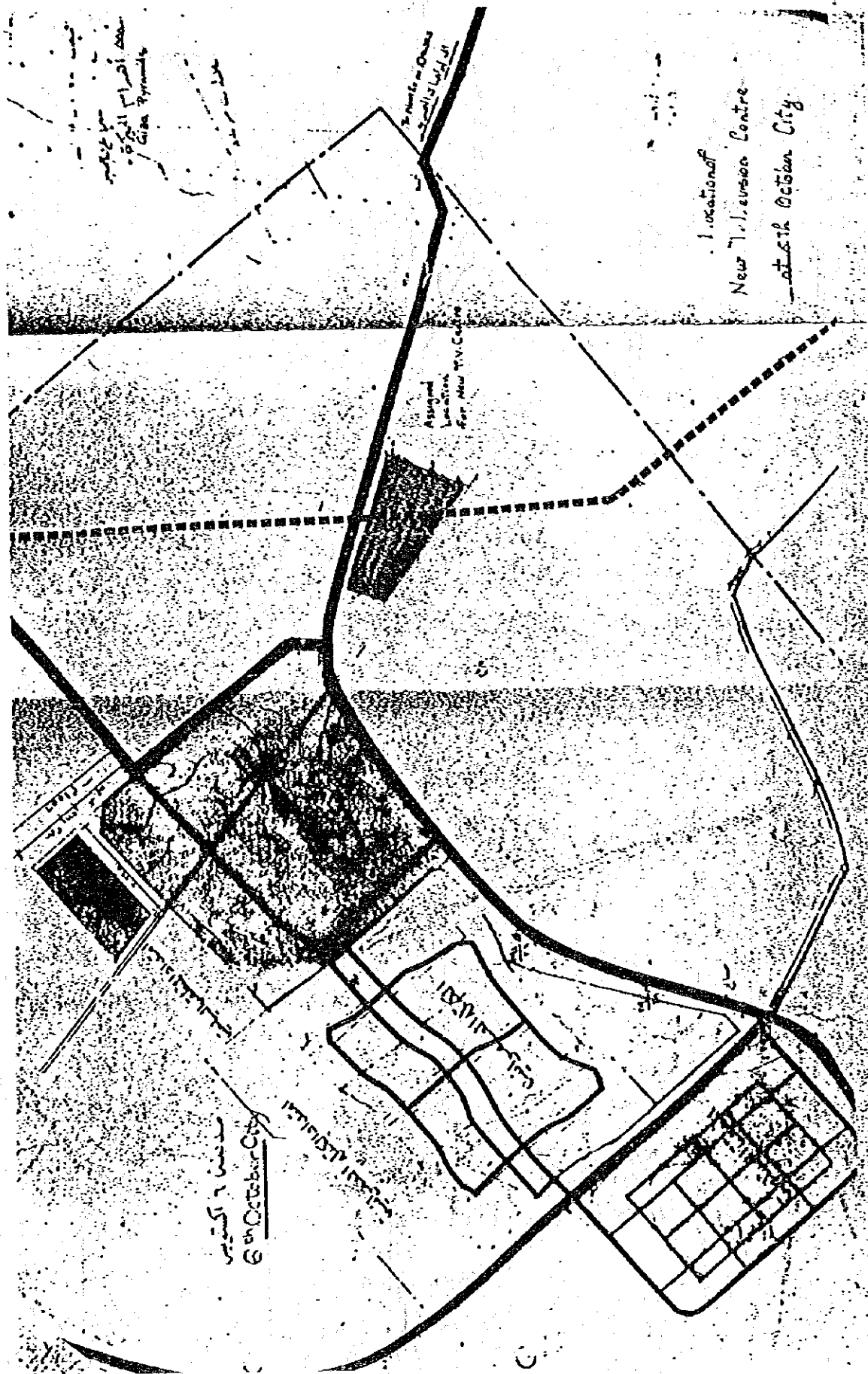


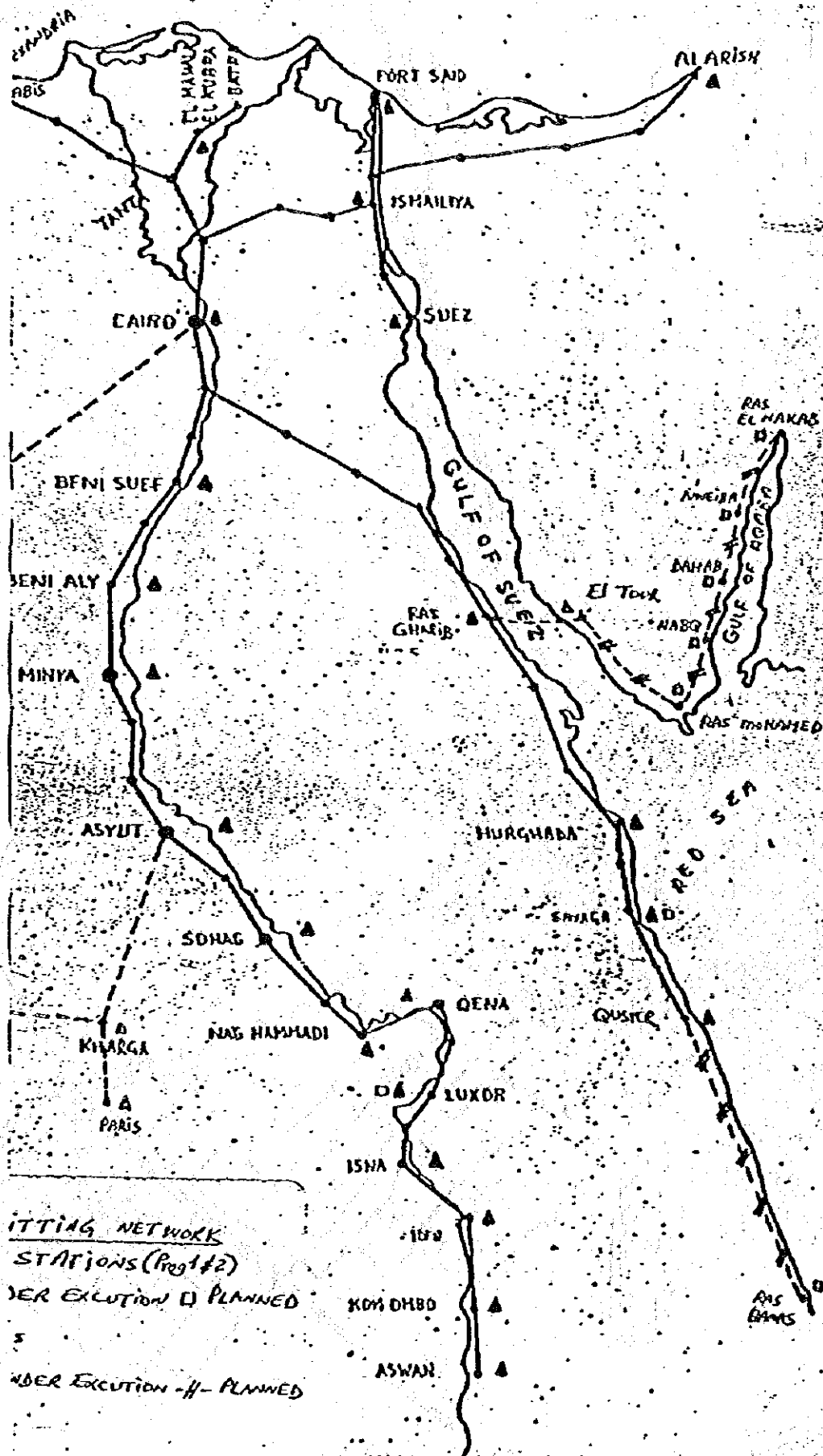


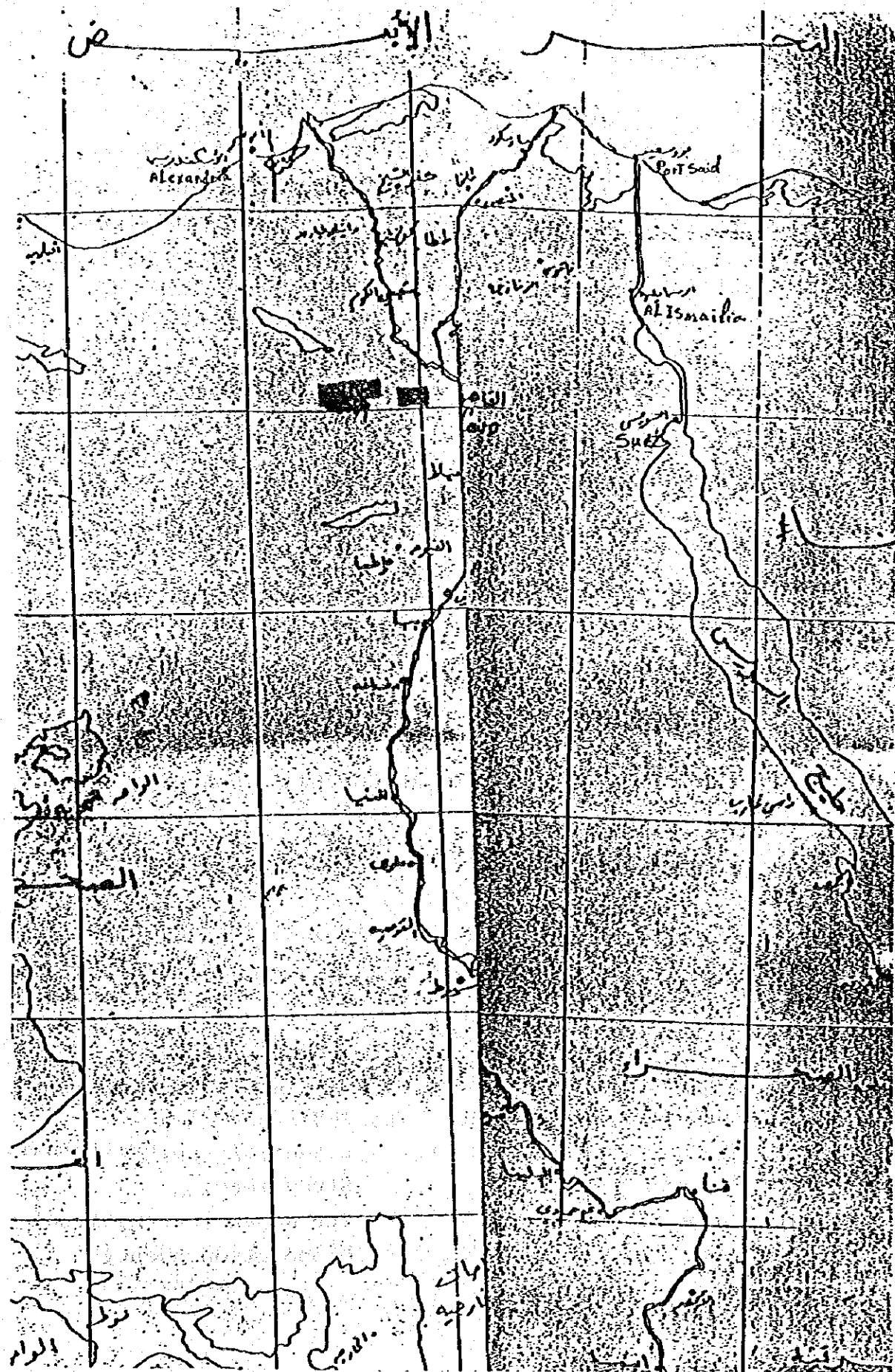
カイロ西20 Km











SCOPE OF WORK  
FOR  
THE STUDY  
ON  
THE NEW TELEVISION CENTER AT 6TH OCTOBER CITY  
FOR  
PROMOTING EDUCATIONAL AND CULTURAL TV PROGRAM  
IN  
THE ARAB REPUBLIC OF EGYPT

AGREED UPON BETWEEN  
EGYPTIAN RADIO AND TELEVISION UNION  
AND  
THE JAPAN INTERNATIONAL COOPERATION AGENCY

Cairo, 25 February, 1985

*Hussein Mohamed Enan*

HUSSEIN MOHAMED ENAN  
President,  
Egyptian Radio and  
Television Union

23/2/1985

*Ichiro Shoji*

ICHIRO SHOJI  
Leader of the Preliminary  
Study Team,  
The Japan International  
Cooperation Agency

## I. INTRODUCTION

In response to the request of the Government of the Arab Republic of Egypt (hereinafter referred to as "Egypt"), the Government of Japan has decided to implement the study on the New Television Center at the 6th October City (hereinafter referred to as "the Study") in accordance with Agreement on Technical Cooperation between the Government of Japan and the Government of Egypt signed on June 15th, 1983.

The Japan International Cooperation Agency (hereinafter referred to as "JICA"), the official agency responsible for the implementation of the technical cooperation programs of the Government of Japan, will undertake the Study in close cooperation with Egyptian Radio and Television Union (hereinafter referred to as "ERTU") and the authorities concerned of the Government of Egypt.

The present document sets forth the Scope of Work with regard to the Study.

## II. OBJECTIVES OF THE STUDY

The objective of the Study is to draw up a plan of a new TV program production center which shall promote educational and cultural programs and contribute to development of living standard throughout the country.

The plan consists of the following items;

- (1) To formulate a plan of a new TV program production center which shall be constructed in the 6th October City including basic design and preparation of an implementation schedule.
- (2) To recommend its effective operation and management system

### III. OUTLINE OF THE STUDY

#### 1. Study area

The 6th October City

#### 2. Contents of the Study

##### A. Data collection, Analysis and Field survey

The team shall carry out data collection, analysis and field survey on the following items;

- (1) Socio-economy
- (2) Present condition of TV broadcasting
- (3) Present program production plan and system
- (4) Present condition and program production system of educational and cultural TV program
- (5) Financial condition of ERTU
- (6) Existing TV program production facilities
- (7) Topographic condition and infrastructure in the construction site
- (8) Construction method and material

##### B. Planning, Designing and Recommendation

Based on the results of above studies, the following items shall be undertaken by the Team.

- (1) Review of the existing conceptual TV Broadcasting plan
- (2) Formulation of an educational and cultural program production plan
- (3) Basic design of the new TV program production center
- (4) Cost estimate of construction and operation
- (5) Preparation of an implementation schedule
- (6) Recommendation of an effective operation and management system of the new TV center
- (7) Financial analysis and social appraisal of the project

### IV. SCHEDULE OF STUDY

The Study shall be undertaken in accordance with the attached tentative schedule.



V. REPORTS

JICA shall prepare and submit the following reports in English to the Government of Egypt.

1. Inception report (20 copies)  
at the beginning of the work in Egypt
2. Progress report (20 copies)  
at the end of the work in Egypt
3. Interim report (20 copies)  
within two and a half (2.5) months after completion of  
the work in Egypt
4. Draft final report (20 copies)  
within four and a half (4.5) months after completion  
of the work in Egypt
5. Final report (50 copies)  
within two (2) months after receiving the comments  
on the Draft Final Report

VI. UNDERTAKING OF THE GOVERNMENT OF EGYPT

The Government of Egypt will accord privileges, immunities and other benefits to the Japanese study team (hereinafter referred to as "the Team") in accordance with the Agreement on Technical Cooperation between the Government of Japan and the Government of the Arab Republic of Egypt.

1. To facilitate smooth conduct of the Study, The Government of Egypt shall take necessary measures:

- 1) to inform the members of the Team of safety requirements in the course of the Study, and take precautions when it is required

- 2) to permit the members of the Team to enter, leave and sojourn in Egypt for the duration of their assignment therein, and exempt them from consular fees
- 3) to exempt the members of the Team from taxes, duties and any other charges on equipment, machinery and other materials brought into Egypt for the conduct of the Study as deemed necessary by ERTU
- 4) to exempt the members of the Team from income tax and other charges of any kind imposed on or in connection with any emolument or allowance paid to the members of the Team for their services in connection with the implementation of the Study
- 5) to provide necessary facilities to the Team for remittance as well as utilization of the funds introduced into Egypt from Japan in connection with the implementation of the Study
- 6) to secure permission for entry into any area deemed necessary for the conduct of the Study
- 7) to secure permission to take all permissible data and documents (including photographs) related to the Study out of Egypt to Japan by the Team
- 8) to provide medical services as needed, its expenses will be chargeable on the members of the Team

2. The Government of Egypt shall bear claims, if any arises, against the members of the Team resulting from, occurring in the course of, or otherwise connected with the discharge of their duties in the implementation of the Study, except when such claims arise from gross negligence or wilful misconduct on the part of the members of the Team.

3. ERTU shall act as counterpart agency to the Team and also coordinating body in relation with other organizations concerned for the smooth implementation of the Study.
4. ERTU shall, at its own expense, provide the Team with the following, in cooperation with other relevant organizations:
  - 1) . available data and information related to the Study
  - 2) . counterpart personnel
  - 3) . suitable office space with usual facilities in Cairo
  - 4) . appropriate number of vehicles with drivers
  - 5) . credentials or identification cards

#### VII. UNDERTAKING OF JICA

For the implementation of the Study, JICA shall take the following measures;

- 1) to dispatch, at its own expense, the Team to Egypt,
- 2) to bring, at its own expense, the equipment, machinery, and materials found necessary to carry out the Study and found not available in Egypt. These items will remain the Japanese Side property,
- 3) to pursue technology transfer to the Egyptian counterpart personnel in the course of the Study

#### VIII. CONSULTATION

JICA and ERTU shall consult with each other in respect of any matter that may arise from or in connection with the Study.

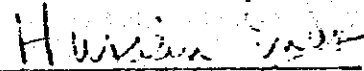
TENTATIVE STUDY SCHEDULE

Month	1	2	3	4	5	6	7	8	9	10
Item										
Work in Egypt	▨	▨			▨		▨			
Work in Japan										
Report	* Inception Report		* Progress Report		* Interim Report		* Draft Final Report		* Final Report	

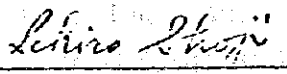
資料-3 Minutes of Meeting

MINUTES OF MEETING  
FOR  
THE STUDY  
ON  
THE NEW TELEVISION CENTER AT 6TH OCTOBER CITY  
FOR  
PROMOTING EDUCATIONAL AND CULTURAL TV PROGRAM  
IN  
THE ARAB REPUBLIC OF EGYPT

Cairo, 25 February, 1985

  
\_\_\_\_\_  
HUSSEIN MOHAMED ENAN  
President,  
Egyptian Radio and  
Television Union

20/2/1985

  
\_\_\_\_\_  
ICHIRO SHOJI  
Leader of the Preliminary  
Study Team,  
The Japan International  
Cooperation Agency

The Japanese Preliminary Study Team (hereinafter referred to as "the Team") organized by the Japan International cooperation Agency (hereinafter referred to as "JICA") visited the Arab Republic of Egypt from 17th to 26th of February, 1985. The Team paid a courtesy call on Mr. Hussein Enan, President of Egyptian Radio and Television Union (hereinafter referred to as "ERTU") and had a series of discussion with the authorities concerned of ERTU. (List of participants in the discussions is attached as Annex 1)

As a result of meetings which were held in a most friendly atmosphere, both sides agreed on the Scope of Work for the Study on the New Television Center at 6th October City for promoting educational and cultural TV programs in the Arab Republic of Egypt.

The record of the meeting is as follows:

- 1) Mr. Enan explained to the Team the importance of this Study. He said that a New Television Center is required so that ERTU can make, by its own staff, educational and cultural programs which meet ERTU standard and will contribute to diminish illiteracy.
- 2) The Team submitted a draft of the Scope of Work and explained it to ERTU. The Scope of Work was agreed with minor modifications.
- 3) In the course of discussions, ERTU requested to the Team that a certain number of ERTU counterpart personnel should be given an opportunity to participate in the work in Japan for facilitating earlier completion of the Study. The Team promised that it will convey the request of ERTU to the Government of Japan.
- 4) The Team and ERTU agreed that data required for the Study should be identified and collected in the earliest occasion to serve the smooth implementation of the Study.

- 5) The Team visited the existing broadcasting facilities of ERTU and the planned site of the New TV Center at 6th October City.
- 6) The Team and ERTU came to an understanding on the Study as follows:
  - (1) Basic design does not include detailed design which is necessary for preparing a tender document.
  - (2) It is required for the completion of the Study on schedule that ERTU should provide the JICA full-scale Study Team with topographic data of the study site by the beginning of the Study and with subsoil survey results of the study site as soon as possible after ERTU receives from Japan the information on specifications of the subsoil survey required for the Study.
- 7) ERTU requested that the Study should include the basic design for the whole Center (studio buildings, open areas and services).

The Team stated the understanding of the Government of Japan as follows:

  - (1) The basic design of this Study should be undertaken concerning studio and other related buildings including the equipment and system needed.
  - (2) A general layout of the New TV Center as a whole would also be included in the Study.
- 8) ERTU submitted to the Team a paper which contains its views and comments on the New TV Center at 6th October City.

## List of Participants

### E R T U

Mr. Farouk Ibrahim Ali	Chairman of Broadcast Engineering Sector
Mr. Mahmoud Khattab	Chief Director of Studio Projects
Mr. Sami Mohamed Eadawi	General Director for Architect Design
Mr. Abdel Fattah Tonami	General Director for Film and Recording Projects, and the Executive Manager of the Project.

### JICA Team

Mr. Ichiro Shoji	Leader
Mr. Hiroji Minoura	Member
Mr. Masayuki Hirata	Member
Mr. Haruo Kurakata	Member
Mr. Ryota Ono	Member



**ERTU PAPER ON ITS  
VIEWS & COMMENTS ON THE NEW T.V. CENTRE  
AT 6TH OCTOBER CITY**

---

- 1) The study should include the basic design for the whole New T.V. Centre (Studio buildings, open areas, & services).
- 2) The study should be basically limited to the New T.V. Center, noting that the necessary data from the existing facilities of ERTU will be used only for guide and reference in the study.
- 3) The facilities of the New T.V. Centre should be studied for maximum utilisation to enable this centre to be an economically independent unit of ERTU, i.e. it must - at least be able to run itself, to refund its capital expenses and to enable to cover future operation, running expenses and replacement of equipment.
- 4) It must be considered that the production of this centre will:
  - \* be transmitted to about 99% of the Egyptian population, using the existing two transmission networks.
  - \* Give addition 10 hours of transmission in the average to the existing two T.V. Programs.
  - \* Give a supply of production to the 3rd T.V. Network under study now.
  - \* Be distributed to schools, institutes, public, and foreign countries in the form of recorded tape programmes.
- 5) ERTU and Ministry of Information makes the educational and cultural programs and transmits it on air, with consultation and cooperation with the Ministiries of Education and culture.
- 6) The New T.V. Centre will be used to produce the planned number of hours mentioned in the terms of reference submitted to JICA. This number represents:
  - Replacement of majority of the programs produced outside ERTU.
  - Moving part of the present production in the existing T.V. Centre which suffers from lack of proper production facilities.
  - The planned increase in production size, based on the requirements of the existing T.V. Network, and the New T.V. Network under study.

7) ERTU raised the points of :

- Egyptian counterpart should participate the study work in Egypt and Japan in the appropriate time and for the suitable periods, to excute the study in the planned time or earlier if possible .
- Training for junior Egyptian staff in different activities of the project in Japan (Engineering, Management, program production, ..etc) is requested, in order to have a suitable staff helping in excution of the project and then in its running effeciently.

8) The remaining Answers to the questionnaire by JICA will be for warded as soon as possible .

S. Badlani

Tobani

Elkhatib

F. I. Ali

25/3/1985

QUESTIONNAIRE

1. National Development plan
  - 1) Long-term National Development Plan
  - 2) Role of TV broadcasting in the National Development Plan.
  - 3) Education and the role of educational TV broadcasting in Egypt.
2. Present education system and future policy.
3. Educational network plan
4. Education and information industries in Egypt and future forecast.
5. population coverage and land coverage on the existing TV networks and future plan.
6. Numbers of TV receiver distributed and future forecast.
7. Present programme composition and its future plan
  - 1) percentage of self-production programmes.
  - 2) Ratio on the programme categories.
  - 3) Ratio of live and recorded programmes and actual broadcasting hours.
  - 4) Characteristics for each TV networks.
  - 5) Ratio of studio utilization in a day (including data as to how many programmes to be produced in a studio per day.
8. Present conditions of existing facilities (including numbers, passing ages, etc.)
  - 1) programme production facilities.
  - 2) Transmitting facilities and output power
  - 3) Programme transmission facilities and system.
  - 4) Other relevant facilities.
9. Present staffing situation for each categorized activities.
10. Revenue and expenditure of ERTU for the past 10 - 15 years and future forecast.
  - 1) Developmental budget.
  - 2) Operational budget.
  - 3) Subsidy by the Government.
  - 4) Income from commercial broadcasting.
  - 5) Income from programme sales.

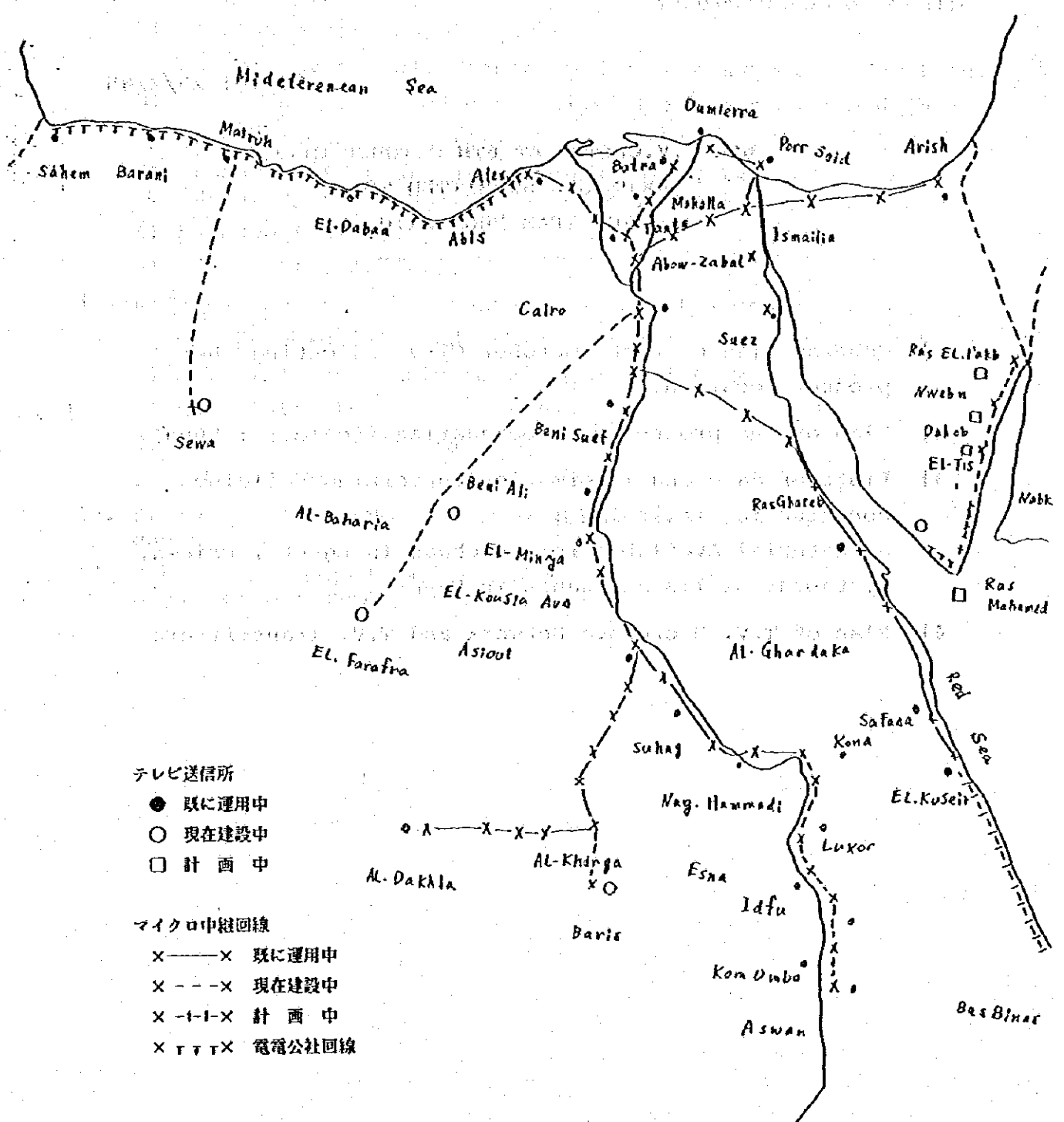
11. General statistics
  - 1) Population in school age
  - 2) Numbers of school, teacher and data concerning education.
  - 3) Annual budget for educational sector and economic data.
  - 4) Electric power services.
  - 5) Standard prices of various entertainments, i.e., show, drama, opera, concert, varieties, sport event and so on.
  - 6) Meteorological data.
  - 7) Other relevant data.
12. Data and informations concerning building construction.
  - 1) Topographic data and subsoil survey result at the Site.
  - 2) Materials available to be purchased in Egypt.
  - 3) Material prices.
  - 4) Labourer's skill and wage in Egypt.
  - 5) Other relevant data.
13. Duties, taxes, laws and legislations for the project execution.
14. Other reference data and informations, such as maps, organization chart, etc.

Cairo: 25/2/85

NEW T.V.CENTER AT 6TH OCTOBER CITY  
DOCUMENTS SUBMITTED TO  
JICA TEAM FROM BRTU

---

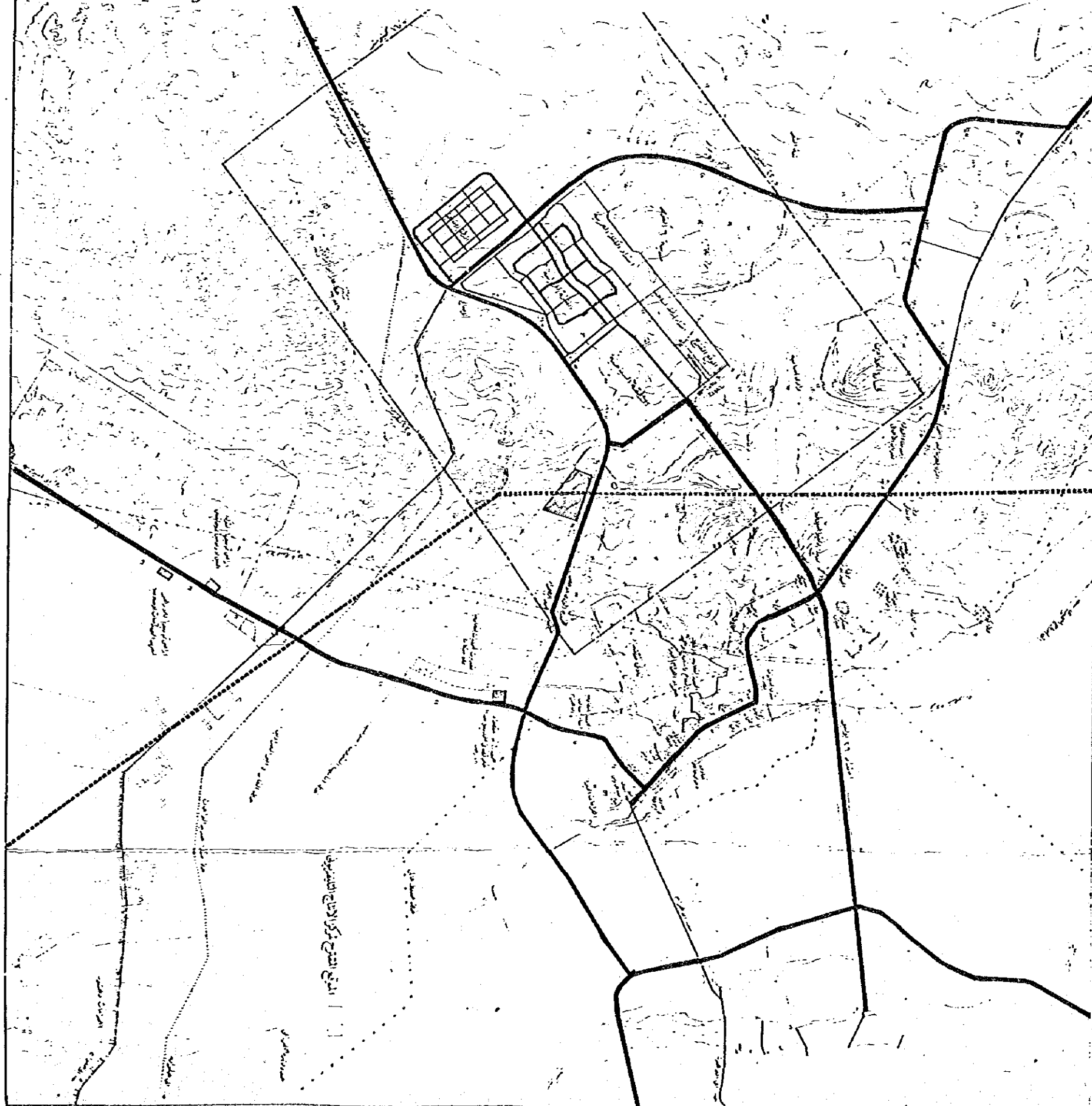
- 1] General plan of 6 the October City indicating the project location.
- 2] Plan of the project site boundaries.(Scale 1 : 5000).
- 3] Lists of date and information concerning building construction including :
  - a) Material Available for purchase in Egypt , Prices.
  - b) Labour skills and wages in Egypt .
- 4] Plan of T.V. Microwave Network and T.V. Transmitters.



テレビ送信所所在地とマイクロ中継回線網



1] General plan of 6-th October City indicating the project location.



وزارة التخطيط والتنمية الاقتصادية

المدينة الجديدة - القاهرة

موقع

مدينة ٦ أكتوبر

على طريق القاهرة - الإسماعيلية - السويس

١:١

مختص بالمشروعات

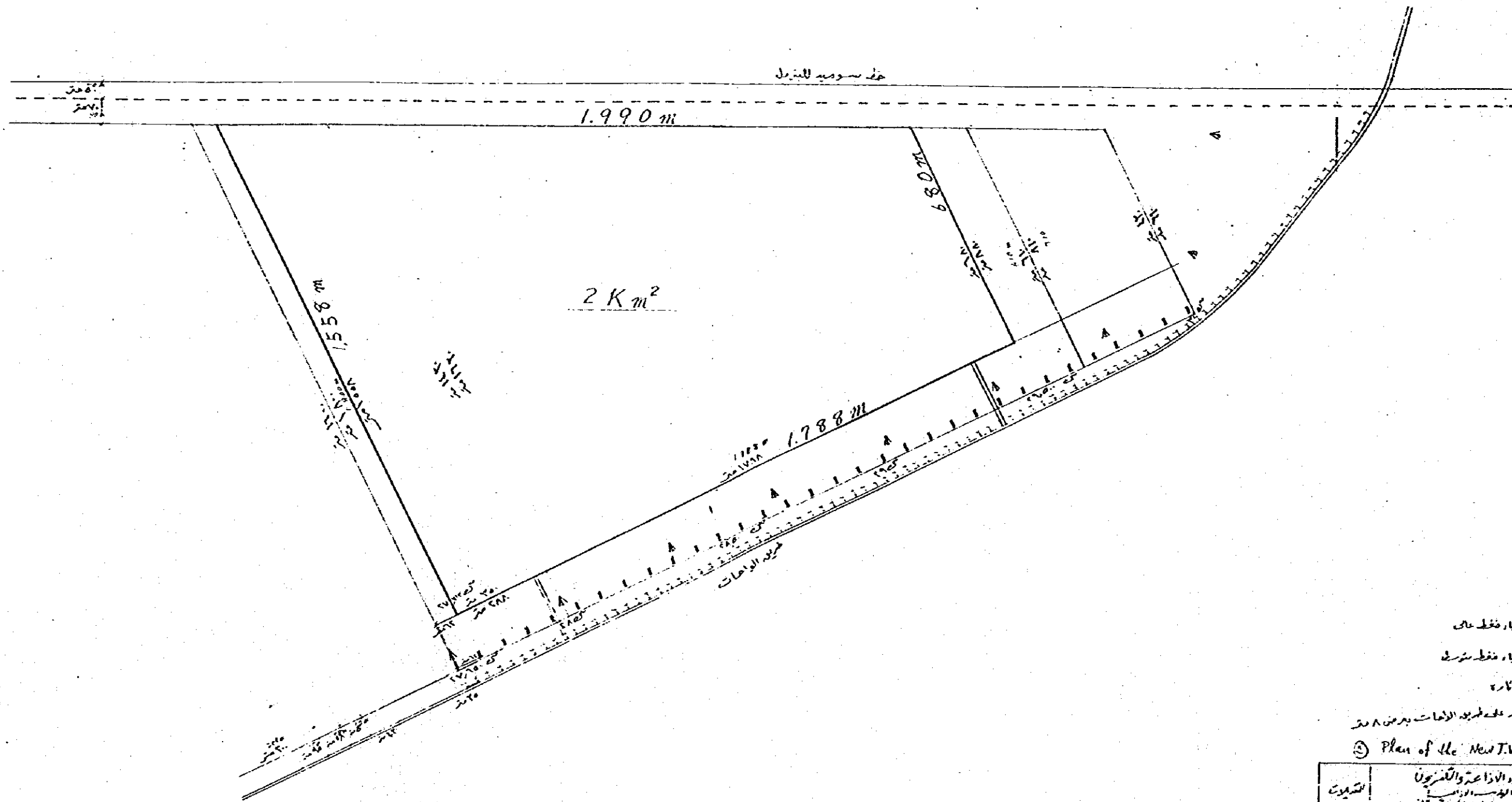
General Plan

114 October

103



2] Plan of the project site boundaries.



- A راج كوراء فقط على
- I راج كوراء فقط مشترك
- 7 عامود نارة

= طريقه متعلقه على طريقه الامارات برصم 8 متر

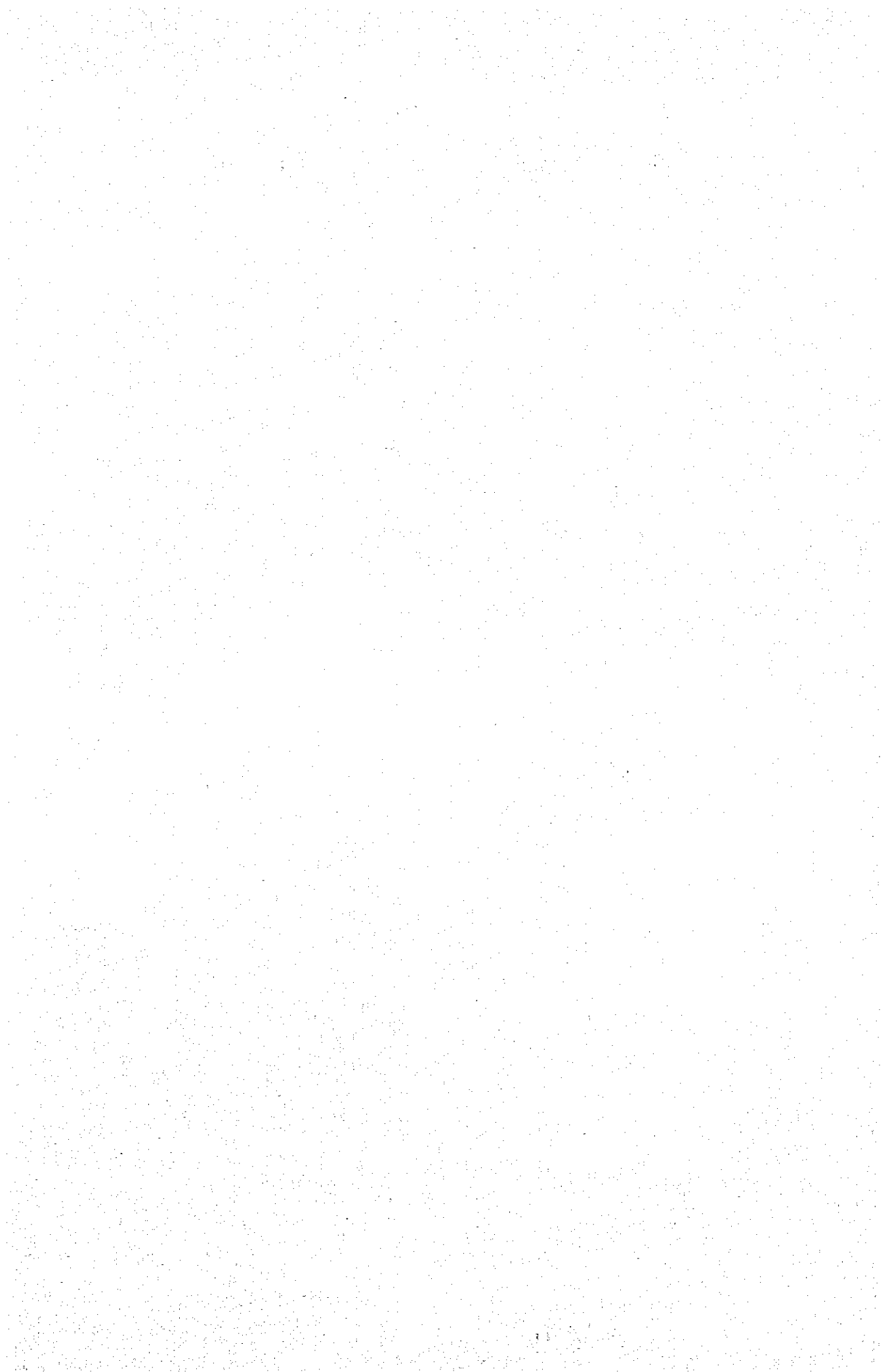
③ Plan of the New TV. Center in 1971

رقم الوحدة	اتحاد الأذاعة والتلفزيون الوحدانية المبرم والبناء وتشروعاته	التعليقات
	الموقع المقترح لمركز الاذاعة والتلفزيون بمدينة الكويت	
تم اصدار المخطط رقم 1000 في 10/10/1971 1/10000 مقياسه		









JICA