

Section 5 Project Implementation Structure

5.1 Implementing Organization

If this project is brought to the stage of implementation, the YFA will have full responsibility for planning, implementation, and continuing operations. It will carry out planning, handle all administrative details, and manage the project after completion. At the construction stage, the Public Utilities and Contracts Section of the Division of Planning, Management, and Statistics will be responsible for the technical phases, including construction and structural checks, approvals, and inspections.

5.2 Implementing Plan

5.2.1 Implementation Method

With respect to the construction of the fishing port facilities, upon the exchange of official documents between the Government of Japan and the FSM Government, an Consultant Contract will be concluded between the FSM and a Consultant of Japanese nationality.

The Consultant will then immediately prepare the required tender drawings, specifications, cost estimates, and tender documents and, with the approval of the FSM Government, will prequalify bidders, issue requests for bids, evaluate the bids received, and then select the Contractor.

The construction project would be implemented as a general contract, based on a contract between the FSM Government and the selected Contractor.

5.2.2 Construction Plan

The subject construction plan will incorporate mooring facilities, slipway, and a fishery complex and workshop.

(1) Types of Construction:

The construction projects under this plan are as follows:

(a) Mooring Wharf:

Dredging

Steel sheet pile

Installation of concrete

Backfilling

Paving

Incidental work

(b) Slipway:

Fabrication of concrete beams and slabs

Dredging and leveling work

Installation of concrete beams and slab

Laying of rails

Paving

Incidental work

(2) Procurement of Materials:

The major materials to be used in this project are steel and concrete. The only material that can be procured locally is fine aggregate (coral sand) for concrete use. All other stone materials, including coarse aggregate must be brought in from outside; the same is true for the main pieces of equipment. Thus, it is essential that the procurement and shipment plans be carefully worked out.

(3) Construction Yard:

A large yard area will be required for stocking construction materials and fabricating the concrete blocks. This area can be located within the planned site area but, to avoid interference

with other construction operations, a layout plan, including a works progress plan, will be required.

(4) Works Progress Plan; Quality:

The progress and quality of the construction program will be subject to the influences of temperature, rainfall, wave action, and other meteorological and oceanographic conditions.

There is no need to concern ourselves with wave action at the site but, since the area is tropical and, therefore, subject to sudden squalls during the rainy season, it would be desirable to avoid this season for the fabrication of the concrete. Also, considering the extreme high temperature, careful attention must be given to quality control of concrete.

(5) Construction Activity:

Under present conditions in Yap, apart from fine aggregate (coral sand) for concrete use, all building materials will have to be brought in from outside. Coarse aggregate (gravel), as in the case of the works facilities, must be procured from nearby countries, such as Palao and Saipan. Other materials, in the interest of quality, price, and freight cost, will be sourced in Japan.

As to the procurement of labor, while unskilled labor is locally available, it will be difficult to locate technicians on the island able to work with steel frames and other related equipment. It will be necessary, therefore, to work on the assumption that such skilled labor will be dispatched from Japan.

5.3 Supervisory Plan

Upon the conclusion of a Consultant Agreement with the FSM Government, the Consultant will conduct a local survey, including a boring survey, and hold final discussions with the Yap State Government. It will then prepare design drawings, specifications and other tender documents,

prequalify the biddings, call for bids, evaluate the bids, and select the Contractor. After concluding a construction contract with the Government of FSM, the Consultant will check shop drawings in Japan, supervise construction at supplying factories, make an on-the-spot inspection of the products.

A supervisory technician will be sent to Yap at the start of local construction who will personally supervise the coordination work of the contractor, supervise actual construction, conduct various inspections, and prepare a supervision report. The supervisory work on Yap will focus essentially on the works and construction.

5.4 Implementing Stages

The implementing stages may be broadly classified into material procurement and local construction. Material procurement will be made from both Japan and neighboring countries. The procurement of these materials and the times of shipment must be closely coordinated with progress of the local construction work. How to avoid scheduling disruptions due to delays in procurement and shipment will be a key factor in the smooth implementation of the construction program. We have worked out an appropriate construction schedule, by type of construction, as shown below:

(1) Civil Works:

Following are the approximate number of months required for the main works involved in the subject program:

	<u>Number of Months</u>
Preparations and procurement within Japan	2
Preparations and procurement in neighboring countries	2
Shipment and customs clearance	1
Preparatory work	1
Wharf work	2
Backfilling work	1.5

Slipway work	2.3
Ramp work	1
Paving	1.2
Cleaning	1

(2) Building Works:

The facilities included in the construction plan comprise a workshop and fishery complex. The approximate times required for each phase are shown below:

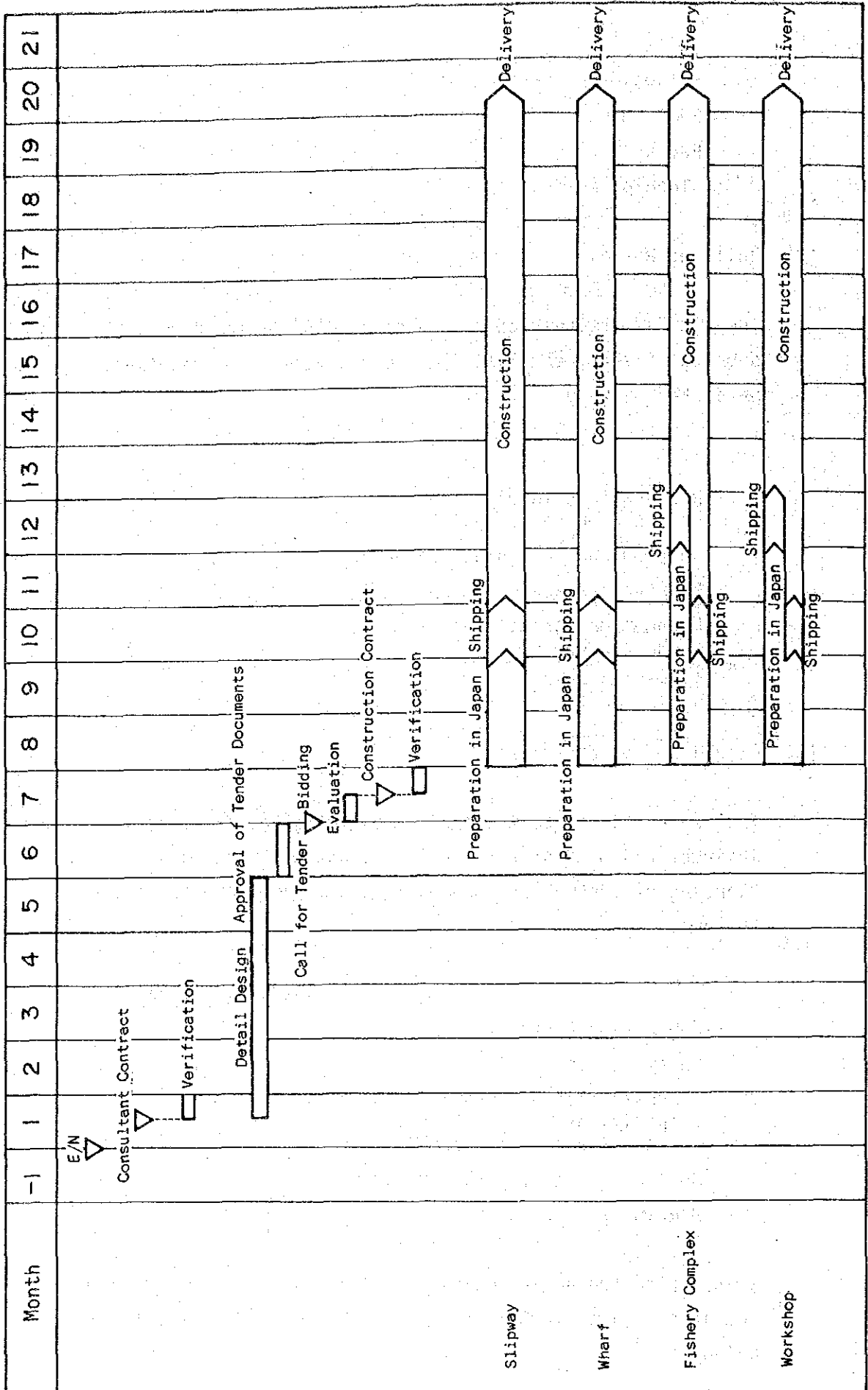
	<u>Number of Months</u>
Preparations in Japan and neighboring countries	4
Shipment and customs clearance	1
Preparatory works in Yap	1
Foundation works; main structure works	4
Finishing work	4

(3) Detail Design and Bidding:

This work relates to the period following the exchange of E/N and includes all phases from the Consultant Contract to bidding and awarding of contracts. Approximate time requirements are as follows:

	<u>Number of Months</u>
Consultant Contract	0.5
Detail Design --	
Preparation of Detail Design Plan, specifications, contract forms, and other bidding documents	4.5
Soil survey in Yap (boring survey)	2.0
Bidding and award of contracts	1.0

Summarizing the above, we have concluded that the approximate period required to implement the program would be 20 months, as outlined below:



Section 6 Supervisory and Operating Plan

6.1 Personnel Plan

Following are the personnel requirements for management and operation of the Fishery Complex:

	<u>No. of Persons</u>
<u>Staff for the ice-making plant, freezer, and refrigerator</u>	
Ice shipment	2
Deicing	1
Ice storage	1
	} (in 2 shifts)
<u>Processing staff</u>	
Processing workers	5
Total	<u>9 + 4 (night shift)</u>
	13

For the ice-plant requirements, it will be possible to use workers at the existing YFA facility. With regard to the processing workers, these can be easily recruited, since no particular skill is required.

There will be separate staff requirements for freezer and electrical technicians but, at present, such personnel are already employed in the existing workshop. Thus, no additional recruitment will be required for the new facilities.

The technical staff required to operate and manage the Workshop would be as follows:

	<u>No. of Persons</u>
Rigging; FRP hull construction	2
Engine and outboard repairs	3
Electrician	1
Freezer	1
Total	<u>7</u>

Two of the required personnel are already employed in the existing workshop. We believe that the other 5 persons can easily be drawn from the planned recruitment lists that have already been prepared by YFA.

The repair requirements for the outboard engines and freezing equipment can be amply met within existing skill levels. However, there will be a compelling need to develop manpower resources and improve technical levels in anticipation of a future trend toward larger fishing vessels, with particular respect to repair capabilities for diesel engines, auxiliary engines, and hulls.

6.2 Operating Costs

6.2.1 Fishery Complex

(1) Power Costs:

The following table summarizes the power capacities and daily requirements for the various items of equipment contained in the Fishery Complex:

Ice unit		
27 KW x 0.75 (load factor) x 24 hours	=	486 KWH/day
Ice Storage		
3 KW x 0.75 x 24 hours	=	54 KWH/day
Quick-freezer		
10 KW x 0.75 x 24 hours	=	180 KWH/day
Freezer		
4.5 KW x 0.75 x 24 hours	=	81 KWH/day
Refrigerator		
2 KW x 0.75 x 24 hours	=	36 KWH/day
Lighting		
2 KW x 2 hours	=	4 KWH/day
Outlets		
12 locations x 1 KW x 0.1 x 1 hour	=	<u>1.2 KWH/day</u>
Total		842.2 KWH/day

Accordingly,

$$842 \text{ KWH/day} \times 250 \text{ days} = 210,500 \text{ KWH/year.}$$

At 17 cents per KWH --

$$210,500 \text{ KWH} \times \$0.17 = \$35,785/\text{year}$$

(2) Water Costs:

The water requirements to produce 5 tons of ice per day would be about 7.5 tons per day. Accordingly,

$$7.5 \text{ tons} \times 250 \text{ days} = 18.75 \text{ tons/year.}$$

Water rates are: 50 cents/19 m³. Thus,

$$18.75 \text{ m}^3 \times \$0.5 / 19 = \$50/\text{per year.}$$

(3) Labor Cost:

As shown in the Personnel Plan, the only new employees required for the Fishery Complex would be 5 workers in the processing section.

Accordingly,

$$5 \text{ workers} \times \$1.25/\text{hour} \times 8 \text{ hours} \times 250 \text{ days} = \$12,500$$

(4) Annual Operating Costs for the Fishery Complex:

Power	\$ 35,785
Water	50
Labor	<u>12,500</u>
Total	\$ 48,335

At the present time, YFA sells ice to registered fishermen in 55 kg blocks at a price of 55 cents per block. Assuming this price is maintained, annual revenues from ice sales may be anticipated as follows:

$$\frac{\$0.5}{55 \text{ kg}} \times 5,000 \text{ kg} \times 250 \text{ days} = \$11,363/\text{year}$$

It is anticipated that the shortfall between costs and revenue will, for the time being, be covered out of the YFA budget. However, looking toward the future, it would be desirable for this to be covered by sales and service revenues. The following program might be considered as one means of accomplishing this objective.

Ice Sales Revenue:

At a price of 1.5 cents/kg,

$$1.5 \text{ cents} \times 5,000 \text{ kg} \times 250 \text{ days} = \$18,750/\text{year}$$

Revenue from Cold Storage Services:

At a charge of 1 cent per kg per day,

$$1 \text{ cent} \times 3,300 \text{ kg} \times 40\% \text{ (utilisation ratio)} \times 250 \text{ days} = \$3,300/\text{year}$$

Contract Processing Revenue:

At a contract processing charge of 5 cents per kg,

$$5 \text{ cents} \times 3,300 \text{ kg} \times 0.4 \times 250 \text{ days} = \$16,500/\text{year}$$

Revenue from Freezer Storage:

At a charge of 1 cent per kg per day,

$$1 \text{ cent} \times 4,388 \text{ kg} \times 250 \text{ days} = \$10,970/\text{year}$$

Total revenues from the above activities would come to \$49,520/year. After deducting operating expenses, a net profit of \$1,185 per year could be earned.

The charges for refrigeration and freezer storage and contract production services would be added on to the price of the fish. However, until the domestic distribution structure develops to a certain stage, in order to encourage distribution based on low fish prices, YFA might elect to absorb these operating costs as a matter of policy, in which case it would be necessary for the Yap State Government to provide commensurate budgetary support to this organization.

6.2.2 The Workshop

(1) Power:

The following table summarizes the power capacities and daily requirements for the various types of equipment contained in the Workshop:

Outlets		
15 locations x 1 KW x 0.1 x 8 hours	=	12 KWH/day
Lighting		
3 KW x 2 hours	=	6 KWH/day
Searchlight		
4 KW x 2 hours x 0.1	=	0.8 KWH/day
Machinery		
12 KW x 0.2 x 8 hours	=	<u>19.2 KWH/day</u>
	Total	38 KWH/day

Accordingly,

$$38 \text{ KWH/day} \times 250 \text{ days} = 9,500 \text{ KWH/day}$$

At 17 cents per KWH,

$$9,500 \text{ KWH} \times \$0.17 = \$1,615/\text{year}$$

(2) Labor:

Five persons are to be recruited for the Workshop. Thus,

$$5 \text{ persons} \times \$1.50/\text{hour} \times 8 \text{ hours} \times 250 \text{ days} = \$15,000/\text{year}$$

(3) Supplies and Replacement Parts:

The cost of supplies and replacement parts for the various repair operations will be borne by the beneficiary. Thus, these need not be considered here.

(4) Total Annual Operating Costs for the Workshop:

Power	\$ 1,615
Labor	<u>15,000</u>
Total	\$ 16,615

Section 7 Project Evaluation

Fishery resources are the most promising of Yap's resources. While these are used by foreign fishing vessels, the Yap fishing industry has not yet developed to the point of being able to effectively utilize these fishing resources. Despite the fact that fishing activity has been an important part of the traditional lifestyle of Yap's subsistence economy, imported canned and frozen fish have begun to make inroads into Yap tables and, for this reason, it has become essential to develop fishing as an industry and thereby increase fish production.

In order to increase production, it will be necessary to develop fishing grounds outside the reef and, for this, vessel motorization is clearly essential. Powered vessels, in turn, will require fuel, for which payment must be made in cash. Accordingly, in order to boost fishery production, it becomes necessary to develop a commercial fishery.

The factors that most inhibit the development of such a commercial fishery are the undeveloped stage of the Yap fish market and the inadequate supply of distribution and fishery infrastructure.

The subject plan is intended to provide Yap with a distribution infrastructure, in the form of ice-making, refrigeration, and freezing facilities as well as facilities for landing catches and supplying fuel and ice, along with fishing industry infrastructure in the form of shiprepair facilities, and, through these facilities, to improve the capabilities of YFA and promote the development of a commercial fishery and fish market.

If, through implementation of this project, it is possible to develop a fishing facility consolidating the various functions of YFA, which has responsibility for fishery development in Yap State, particularly for that of a commercial fishery, we may expect, through the efforts of the Authority, a stabilized supply of fish products, based on freezer and refrigeration facilities; enhanced supply capability via ice, fuel and water-supply facilities; and effective maintenance of the factors of

production through shiprepair facilities.

By means of the above facilities, the project will, in our view, contribute to the development of a commercial fishery and of a local fish market structure. We feel, therefore, that there is ample justification for the Government of Japan extending cooperation to this project in the form of a grant-in-aid.

Section 8 Conclusions and Recommendations

The State of Yap is placing particular emphasis in its fishery development policies on a strengthening of the capabilities of YFA with a view toward developing a small-scale commercial fishery, together with an industrial fishery, and thereby displacing food imports with local fish production and establishing, in the process, a self-sufficient fishing industry.

Fishing is an integral part of the lifestyle of the Yap people, and fish has traditionally been an important part of their diet, while fish resources are also abundant in the area. While the basic conditions for the development of a fishing industry are thus clearly present, the industry has failed to develop, owing to the following circumstances. The major share of the State's economic activity is still bound up within the framework of a subsistence economy, and so fishing activity has been carried out as a part of this subsistence economy rather than for the production of commercial products. As a result, a market to distribute fish catches has been slow to develop, while there has been a lack of the basic infrastructure to support the small cadre of commercial fishermen that have just begun to emerge, such as mooring, fish landing, supply, and vessel repair facilities.

As a result, the Yap State Government feels that it is a matter of urgent priority, for purposes of expanding fish production, to implement a YFA plan to construct in Colonia a Fishery Complex, composed of a freezer, refrigerator, and ice-making facilities, and a Fishing Port, comprising mooring, supply, and repair facilities.

If this plan is executed, not only will YFA be in a position to more effectively land the catches from its fishing vessels and supply and repair these vessels but, by promoting the development of a distribution mechanism to handle catches from other small-scale commercial fishermen, achieve a growth in fish production as well. This expansion in domestic supply could be expected to result in a steady displacement of food imports and so lead to the development of a viable fishing industry.

With regard to the maintenance and operating costs of the Fishery Complex and Workshop, while personnel requirements would increase beyond present levels, it is expected that these can be met from the YFA budget.

The operation of the Fishery Complex and Workshop can be successfully implemented within the existing capabilities of YFA so that no particular difficulties are anticipated in this respect. However, it would be desirable to further refine technical levels in the future by making use of the technical training programs offered by various countries.

For the above reasons, the Basic Design Study Team has concluded that YFA's plan to construct a Fishing Complex and Fishing Port at Colonia would bring manifold benefits to the local economy and that there would be ample justification in the Government of Japan extending a grant-in-aid.

In order to more effectively utilize, in future years, the facilities to be provided under this program, develop the fish distribution structure, and increase fish production, we feel that consideration should be given to the following points;

(1) Harmonizing the Plan with Yap's Traditional Society:

Yap's economy and society are presently in a transitional stage between a subsistence and a money economy. The State's traditional society has, up to now, been dominated by a subsistence economy. To permit commercial products to penetrate such a society will require a persistent and dedicated effort. We believe that only by generating the desire to improve living standings among the members of this traditional society and cultivating in them the will to increase production, and by providing the necessary assistance in a form that will respond to these needs, will it be possible to achieve social progress in harmony with the traditional society.

(2) Efforts to Raise Technical Standards:

As previously noted, it will be possible to operate the facilities provided in this plan within the present technical capabilities of YFA. In order to give full play to the facilities in future years, however, there will be a need to upgrade the technological skill levels of the supervisory and operating technicians and of the line workers. It would be helpful, in this connection, to nurture such technical personnel by utilizing the training programs offered by other foreign countries.

APPENDIX

Appendix I

MINUTES OF DISCUSSIONS
ON
THE SMALL-SCALE FISHERIES DEVELOPMENT PROJECT
AND
FISHING HARBOUR PREPARATION PROJECT

In response to the request made by the Government of the Federated States of Micronesia for the Small-Scale Fisheries Development Project and Fishing Harbour Preparation Project (hereinafter referred to as "the Projects"), the Government of Japan decided to conduct a Basic Design Study and the Japan International Cooperation Agency (hereinafter referred to as "JICA") has sent to Micronesia the team headed by Mr. Noboru Oshima, Deputy Director, Fishing Port Planning Div., Fishing Port Department, The Fisheries Agency, from September 30th to October 23rd, 1985.

The Team has carried out a field survey, held a series of discussions, and exchanged views with the authorities concerned of the Government of the Federated States of Micronesia.

As a result of the study and discussions, both parties have agreed to recommend to their respective Governments to examine the results of the study attached herewith towards the realization of the Project.

Pohnpei, October 18, 1985

Noboru Oshima

Noboru Oshima
Team Leader
Japanese Study Team
JICA

Masao Nakayama

Masao Nakayama
Chief, International Affairs
Department of External Affairs
Federated States of Micronesia

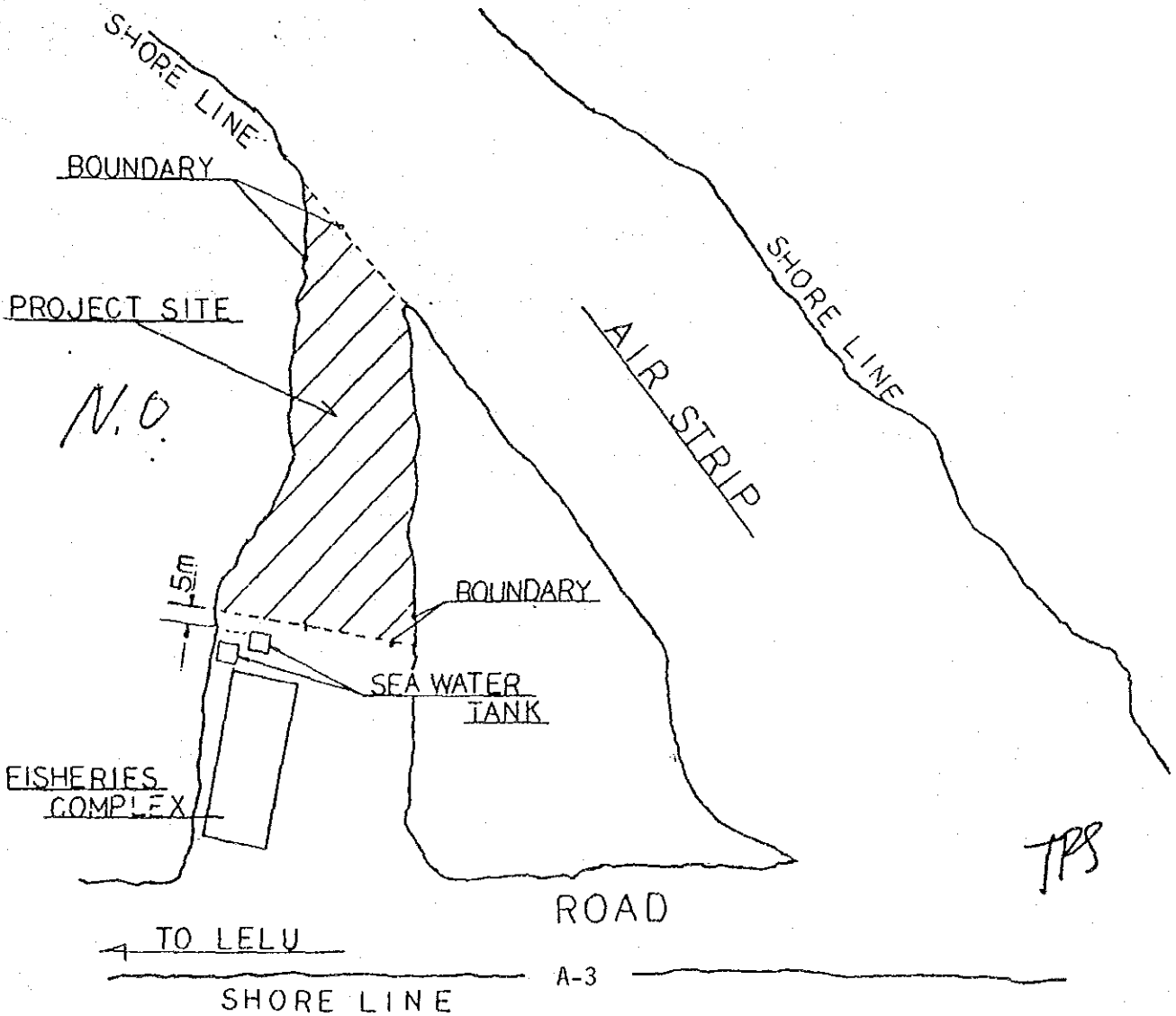
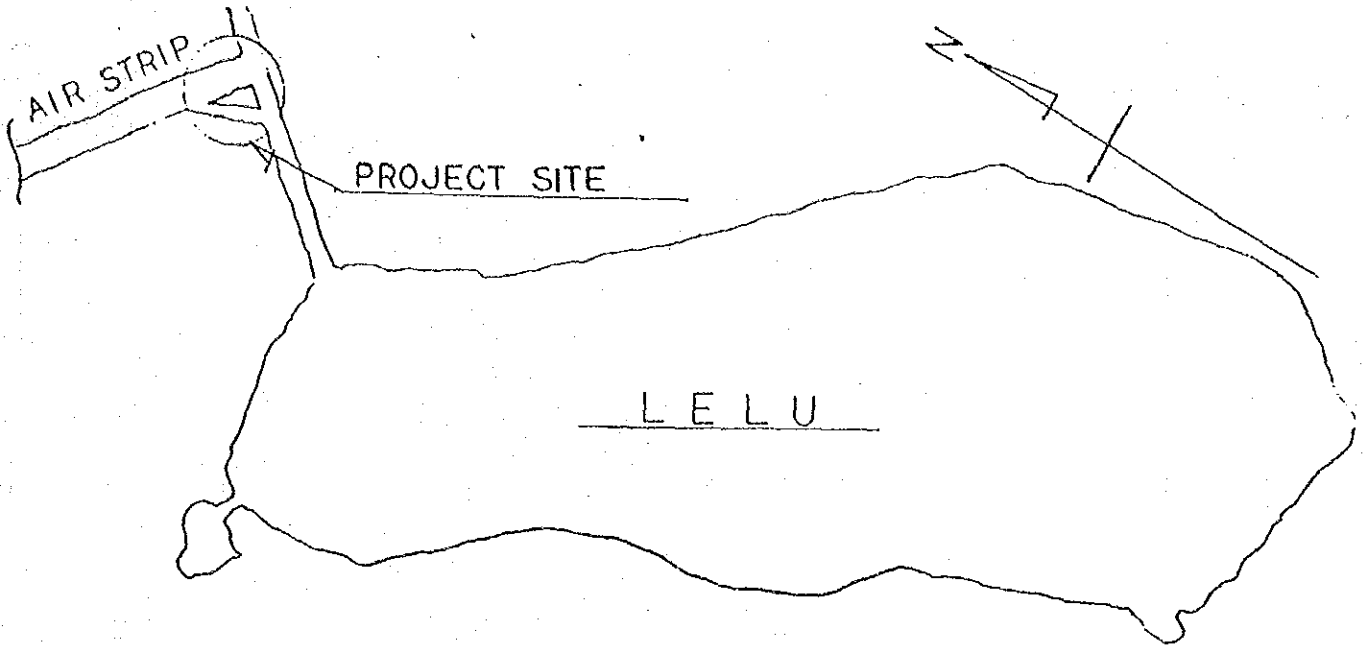
ATTACHMENTS

1. The objectives of the Projects are:
 - to provide fishing equipment, a boat and facilities for developing small-scale fisheries in Kosrae State, and
 - to construct a fishing port and ancillary facilities and to provide necessary equipment for developing fisheries in Yap State.
2. The executing agencies for the Projects will be:
 - Division of Marine Resources, Department of Conservation and Development of Kosrae State, and
 - Yap Fishing Authority of Yap State.
3. The above agencies will take necessary measures to administer the respective facilities and the former agency will be responsible for adequate distribution of the equipment purchased under the Project.
4. The proposed sites of the Projects in Kosrae and Yap have been acquired by the Governments of Yap and Kosrae (hereinafter referred to as "the Project sites") as attached in Annex-1 and Annex-2 respectively.
5. The Japanese Study Team will convey to the Government of Japan the desire of the Government of the Federated States of Micronesia that the former takes necessary measures to cooperate in implementing the Projects and provides necessary facilities and other items as listed in Annex-3 within the scope of Japanese economic cooperation in grant form.
6. The Government of the Federated States of Micronesia has understood Japan's Grant Aid system explained by the Team which includes a principle of use of a Japanese consultant firm and Japanese general contractor for implementation of the Projects.
7. The Government of the Federated States of Micronesia will take necessary measures as listed in Annex-4 on condition that Grant Assistant by the Government of Japan is extended to the Projects.

N.O

TPS

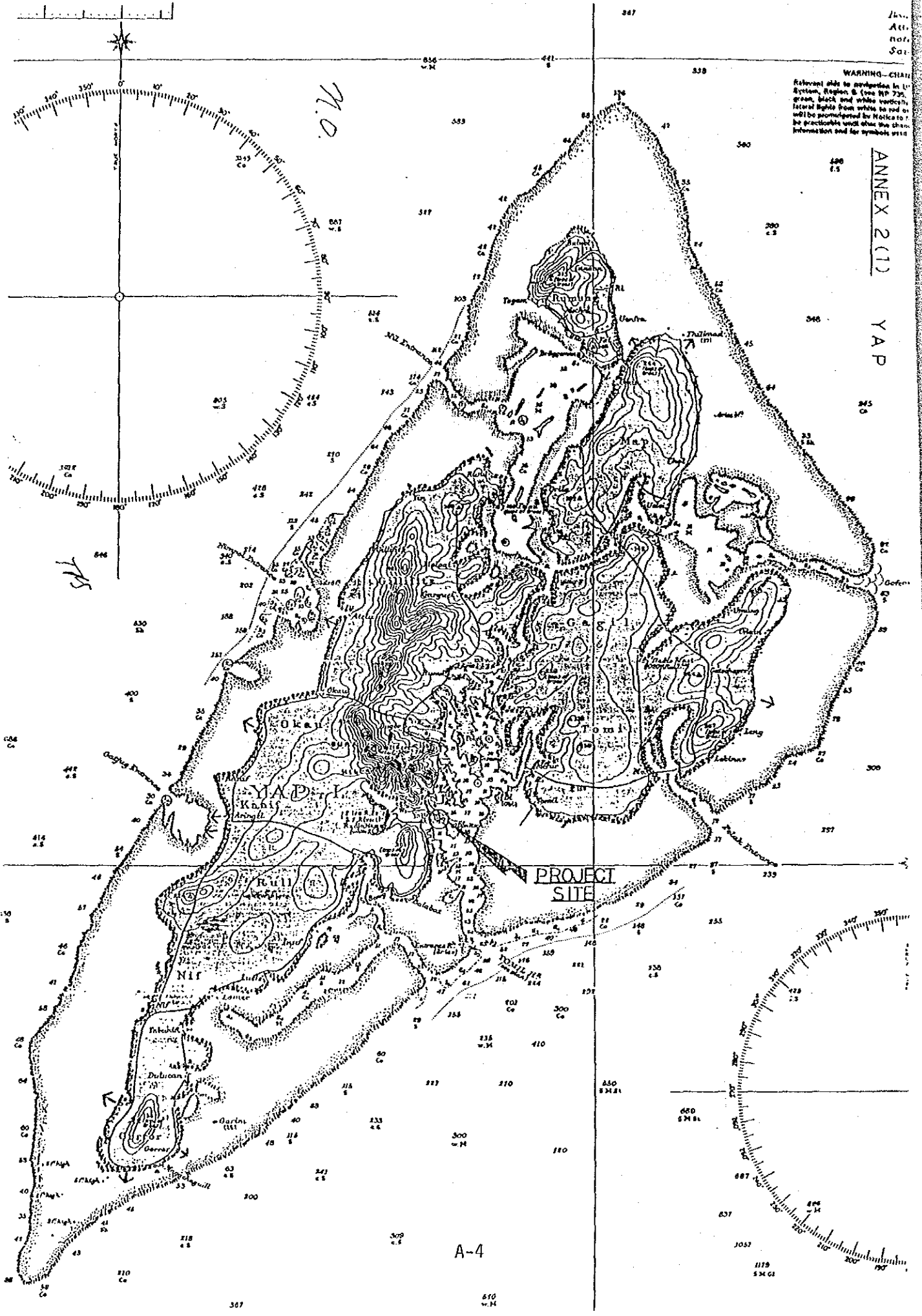
ANNEX 1 KOSRAE



WARNING-CHART
Refer to slide to projection in U.S. System, Region 8 (see RP 739, green, black and white vertically lateral right from white to red) will be photographed by Helio to 7. be practicable until after the chart information and for symbols 1111

ANNEX 2(1)

YAP



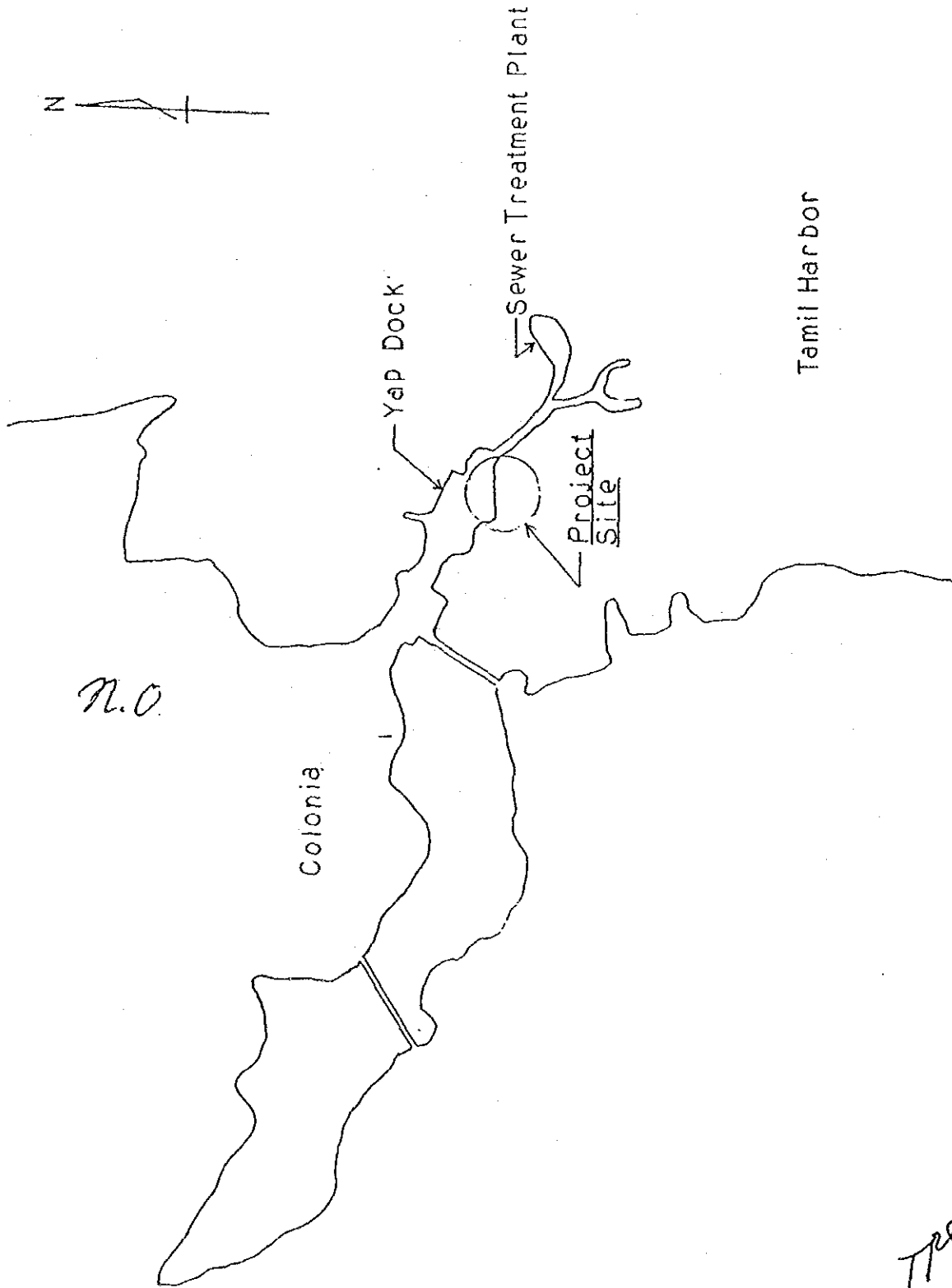
M.O.

MS

PROJECT SITE

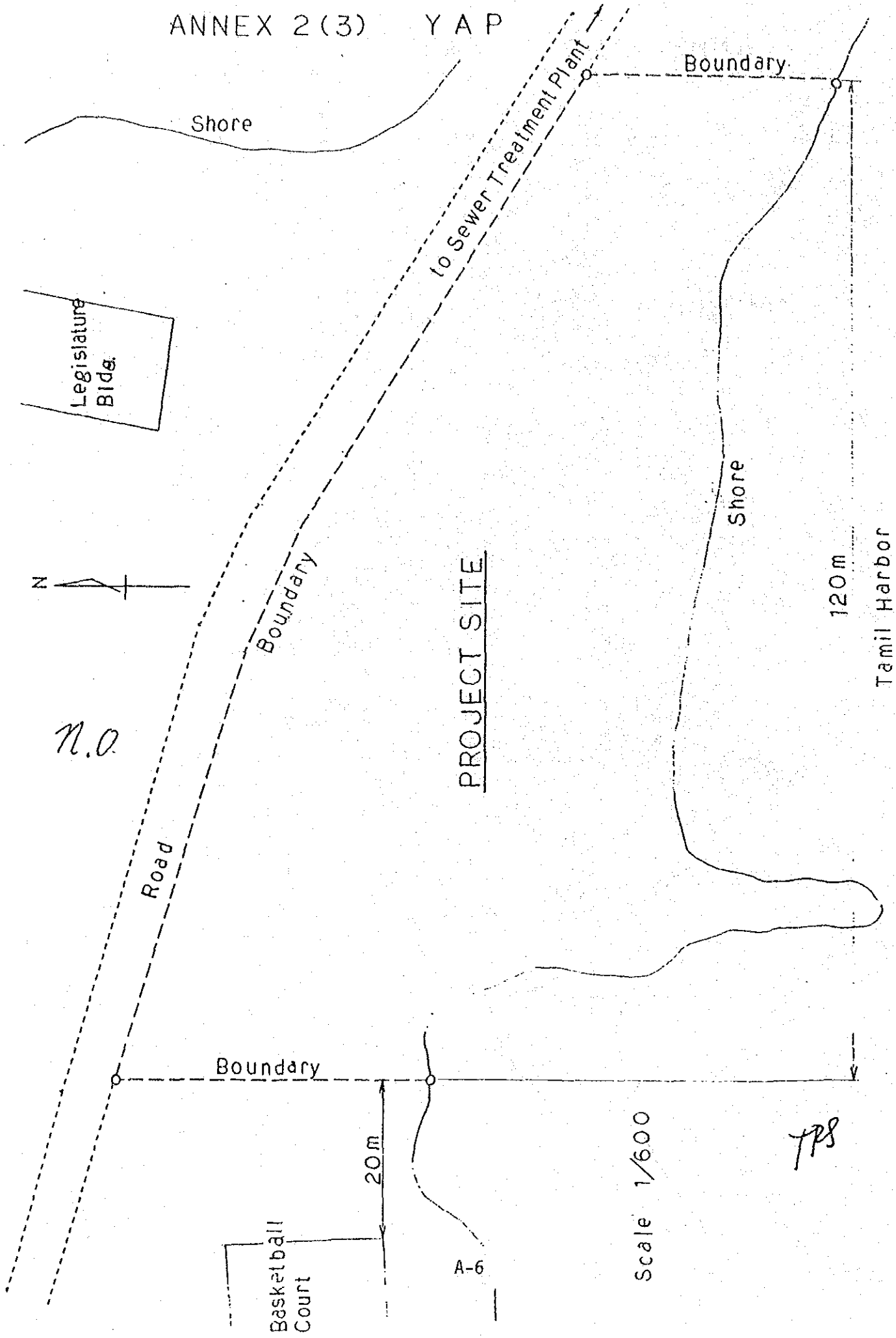
A-4

ANNEX 2(2) Y A P

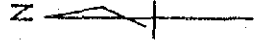


TPS

ANNEX 2 (3) Y A P



Legislature Bldg.



n.o.

Road

Boundary

to Sewer Treatment Plant

Boundary

Shore

120m

Tamil Harbor

PROJECT SITE

Boundary

20m

Basketball Court

A-6

Scale 1/600

TPS

ANNEX-3

Items required by the Government of the Federated States of
Micronesia whose cost will be borne by the Government of Japan:

KOSRAE Fishing equipment, boat and facilities for the Division of
Marine Resources and local fishermen in Kosrae
One pole and line fishing boat
Small FRP boats
Outboard engines
Fishing gear
Workshop
Necessary equipment for the above
Others

YAP Fishing port, ancillary facilities and necessary equipment
for the fishing boats of Yap Fishing Authority and local
fishermen in Yap.
Wharf
Slipway
Workshop
Equipment for the above
Cold Storage
Refrigerator
Ice making machine
Ice storage
Others

N.O.

TAS

ANNEX-4

Following arrangements will be required to be taken by the Governments of the Federated States of Micronesia and the States of Kosrae and Yap:

1. To carry out site preparation such as clearing, filling, leveling and removing of shipwrecks and debris prior to commencement of construction works.
2. To provide facilities for distribution of electricity, water supply, fuel supply, drainage, telephone lines and other incidental facilities to the proposed sites.
3. To ensure prompt unloading, tax exemption, customs clearance at ports of disembarkation in Micronesia and prompt internal transportation therein of the products under the grant.
4. To exempt Japanese nationals from customs duties, internal taxes and other fiscal levies which may be imposed in Micronesia with respect to the supply of the products and services under the verified contracts.
5. To accord Japanese nationals whose services may be required in connection with the supply of the products and the services under the verified contract such facilities as may be necessary for their entry into Micronesia and stay therein for the performance of their work.
6. To maintain and use properly and effectively the facilities constructed and equipment purchased under the grant.
7. To bear all the expenses other than those to be borne by the grant, necessary for construction of the facilities as well as for local transportation and the installation of the equipment.
8. To furnish general furniture for the facilities.
9. If and when the products, purchased by the grant from the Government of Japan, are sold or leased to fishermen, the Government of Kosrae and Yap agree to the principles that any funds received from the sale or lease of equipment or the use of facilities shall be used for the purpose of fishing development and maintenance of the equipment purchased by the Grant from the Government of Japan, and copies of the annual financial audits of the Governments of Kosrae and Yap will be provided to the Government of Japan.

N.O

TTS

Appendix II

SURVEY TEAM MEMBERS

A GROUP

1. Mr. Noboru OSHIMA
Team Leader
Deputy Director,
Fishing Port Planning Division,
Fishing Port Department,
Fisheries Agency,
Ministry of Agriculture, Forestry
and Fisheries
2. Mr. Minami NAGAI
Project Coordinator
Planning Division,
Grant Aid Planning and Survey Department,
Japan International Cooperation
Agency (JICA)
3. Mr. Kuniaki TAKAHASHI
Planner, Fisheries Development
Fisheries Engineering Co., Ltd.

B GROUP

1. Mr. Toshiya OGASAWARA
Facilities Designer
Fisheries Engineering Co., Ltd.
2. Mr. Shigeki ISHIKAWA
Civil Engineer
Fisheries Engineering Co., Ltd.

C GROUP

1. Mr. Hiroshi KONISHI
Fishing Boat Planner
International Division,
Oceanic Fisheries Department,
Fisheries Agency, MAFF
2. Mr. Takafumi TOSHIHARA
Fishing Gear Engineer
Fisheries Engineering Co., Ltd.
3. Mr. Akio YAMADA
Fishing Boat Designer
Fisheries Engineering Co., Ltd.

Appendix III

SURVEY ITINERARY

Day		Date	Itinerary & Description	
A.B	C		A Group: Mr. Oshima Mr. Nagai Mr. Takahashi B Group: Mr. Ogasawara Mr. Ishikawa	C Group: Mr. Konishi Mr. Toshihara Mr. Yamada
1		Sept. 30 (Mon.)	Tokyo $\xrightarrow{CO-562}$ Guam	
2		Oct. 1 (Tue.)	Discussion with Japanese Consulate Guam $\xrightarrow{CO-562}$ Ponape	
3		Oct. 2 (Wed.)	Discussion with FSM Government	
4		Oct. 3 (Thu.)	Discussion with DEA and Marine Resources	
5	1	Oct. 4 (Fri.)	Ponape $\xrightarrow{CO-557}$ Guam Discussion within the Team	Tokyo $\xrightarrow{CO-562}$ Guam
6	2	Oct. 5 (Sat.)	Guam $\xrightarrow{CO-550}$ Yap Visit to the Site	Discussion within the Group
7	3	Oct. 6 (Sun.)	Studying information	Guam $\xrightarrow{CO-520}$ Ponape
8	4	Oct. 7 (Mon.)	Discussion with Yap Governor and YFA	Discussion with FSM Government
9	5	Oct. 8 (Tue.)	Field survey; Discussion with YFA and Public Works	Ponape $\xrightarrow{512}$ Kosrae Discussion with Kosrae Government
10	6	Oct. 9 (Wed.)	Discussion with Yap Fishing Activity; Sound survey	Discussion with Kosrae Marine Resources

Day		Date	Itinerary & Description	
11	7	Oct. 10 (Thu.)	Discussion within the Groups; Preparing data and information	Study of Kosrae fishing activity; Discussion with Marine Resources
12	8	Oct. 11 (Fri.)	Discussion with Yap Government; Site survey	Discussion with Kosrae Government Kosrae $\xrightarrow{511}$ Ponape
13	9	Oct. 12 (Sat.)	Yap $\xrightarrow{CO-553}$ Guam	Discussion within the Group
14	10	Oct. 13 (Sun.)	Guam $\xrightarrow{CO-520}$ Ponape	Discussion within the Group
15	11	Oct. 14 (Mon.)	Discussion within the Team Preparing draft of minutes	
16	12	Oct. 15 (Tue.)	Discussion with Kosrae Governor	
17	13	Oct. 16 (Wed.)	Discussion on the minutes with FSM Government	
18	14	Oct. 17 (Thu.)	Discussion on the minutes with FSM Government	
			A group C Group	B Group
19	15	Oct. 18 (Fri.)	Conclusion of Minutes of discussion Ponape $\xrightarrow{CO-557}$ Guam Report of survey results to Japanese Consulate	Study of construction condition (Ponape)
20	16	Oct. 19 (Sat.)	Guam $\xrightarrow{CO-6563}$ Tokyo	Study of construction condition (Ponape)
21		Oct. 20 (Sun.)		Ponape $\xrightarrow{CO-557}$ Guam

Day	Date	Itinerary & Description
22	Oct. 21 (Mon.)	Study of construction machinery and material
23	Oct. 22 (Tue.)	Study of construction machinery and material
24	Oct. 23 (Wed.)	Guam — CO-561 → Tokyo

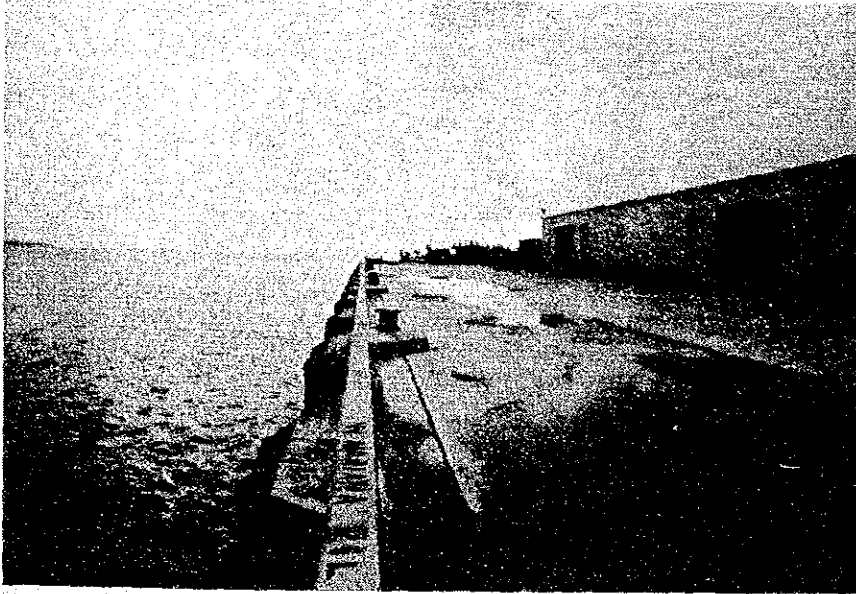
Appendix IV

DISCUSSANTS

NAME	ORGANIZATION	TITLE
FSM GOVERNMENT		
Mr. ASTERIO TAKESY	Department of External Affairs (DEA)	Deputy Secretary
Mr. DAVID NEVITT	Office of the Attorney General (OAG)	Attorney General
Mr. JAHN SOHL	Office of Planning & Statistics	Director
Ms. PATRICIA CROYLE	OPS	Architect
Mr. MICHAEL GAWEL	Department of Resources & Development	Chief, Marine Resources
Mr. TADAO SIGRAH	DEA	Deputy Chief, Asian Affairs
Mr. BERNARD THOULOG	DEA	Foreign Service Officer
Mr. JAMES A. MOVICK	DEA	Deputy Chief, Multilateral Affairs
Mr. MIKE A. McCOY	Micronesian Maritime Authority	Executive Director
Mr. LALLY BERTONCINI	OTG	Chief, Div. of Law

NAME	ORGANIZATION	TITLE
YAP STATE GOVERNMENT		
The Hon. JOHN A. MANGFEL		Governor
The Hon. HILARY TACHELIOL		Lt. Governor
The Hon. PETRUS TUN		Special Consultant to Governor
Mr. SAM FALANRUW	Department of Resources & Development	Director
Mr. CLEMENT MULALAP	Office of the Attorney General	Deputy Attorney General
Mr. "REB" REBEULUCH	Yap Fishing Authority	Asst. Manager
Mr. BRIAN FARLEY		Special Asst. to Governor
Mr. MIKE RODY	Office of Planning, Budget and Statistics	Acting Director
KOSRAE STATE GOVERNMENT		
The Hon. YOSHIO P. GEORGE		Governor
The Hon. MOSES T. MACKWELUNG		Lt. Governor
Mr. GERSON JACKSON	Department of Conservation & Development	Director
Mr. AREN PALIK	Department of Planning & Statistics	Chief
Mr. MICHAEL WHITE	Div. of Marine Resources	Chief

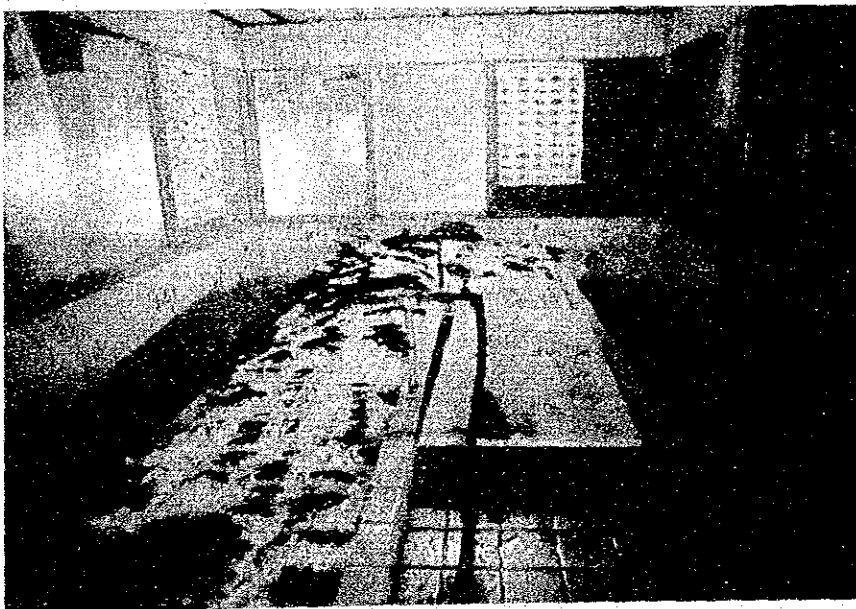
Appendix V



Commercial Dock



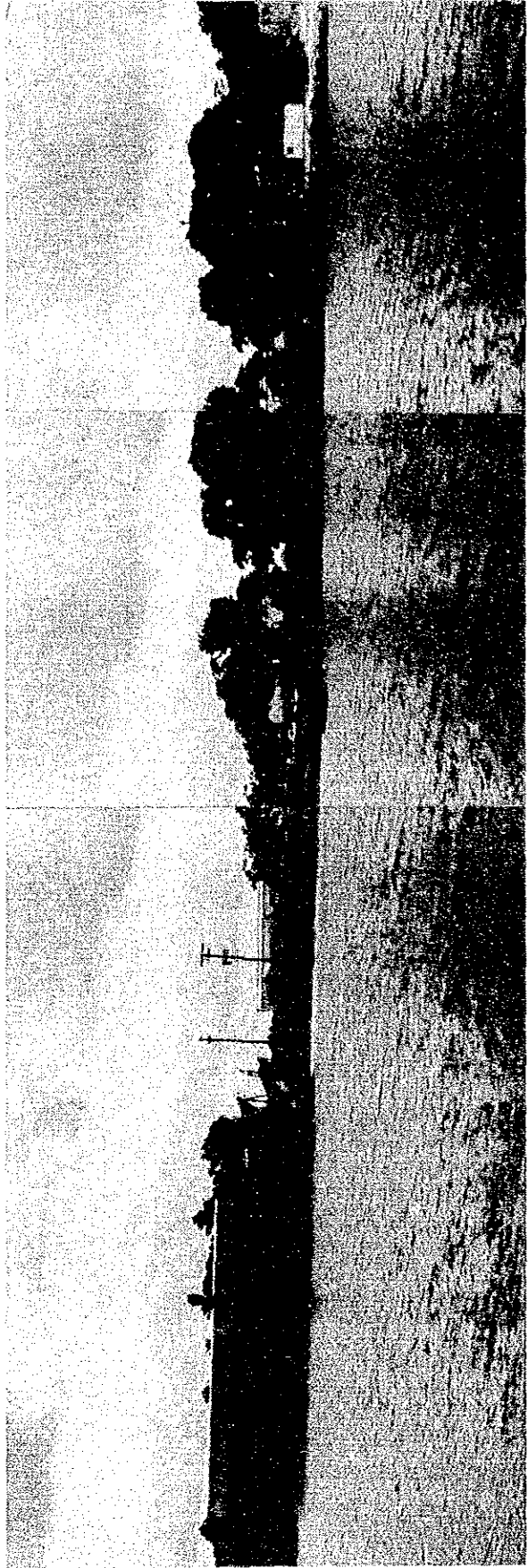
Old Dock &
YFA's 30 GT Vessels



Fish Market



Proposed Site for Fishing Port



Proposed Site for Fishing Port (View from the Sea)

Appendix VI

YAP FISHING AUTHORITY
MONTHLY FINANCIAL STATEMENTS
AUGUST 31, 1985

P.O. BOX 338 YAP STATE
Yap State, Federated States of Micronesia
Western Caroline Islands 96943

YAP FISHING AUTHORITY
 Yap State, Federated States of Micronesia
 Western Caroline Islands 96943

BALANCE SHEET
 August 31, 1985

A S S E T S

Current:

Cash on hand and in bank:

Petty cash fund	\$ 500.00
Change fund	15.00
Current Account No. 073-1	410.04
Current Account No. 636-5	265.01
Savings Account No. 1412	30,674.04

Accounts Receivable:

Trade - Net of \$1,280.91 Allow- ance for Doubtful Accounts	15,703.49
Employees	3,380.46
Loans receivable	500.00
Inventory	30,526.67
Deposits and prepayments	<u>1,225.41</u>

Total Current Assets \$ 83,200.12

Fixed:

Buildings	\$ 65,852.50
Dock Extension	41,743.27
Land transportation equipment	20,342.00
Water transportation equipment	216,655.29
Refrigeration equipment	97,980.60
Office equipment	20,048.25
Communications equipment	50,935.91
Store equipment	263.95
Marine equipment	54,351.18
Shop equipment and tools	1,005.13
Office furniture and fixtures	4,541.26
Store furniture and fixtures	369.90
House furniture and fixtures	449.00
Other capital assets	<u>5,213.91</u>
Total - At Cost	\$ 579,752.15
Less: Accumulated Depreciation	<u>130,809.67</u>

Net Book Value 448,942.48

TOTAL ASSETS \$ 532,142.60

=====

LIABILITIES AND FUND EQUITY

Liabilities:

Accounts payable:

Trade	\$ 1,440.93
Others	101.29
Withheld tax payable	806.48
SSS Premiums payable	757.98
Deposits and payable	165.00
Insurance payable	28.42
Accrued expenses	<u>1,872.20</u>

Total Liabilities \$ 5,172.30

Fund Equity:

Contributions	\$ <u>160,000.00</u>
Retained Earnings - Unrestricted:	
Balance at August 31, 1985	206,123.47
Add: Net Income - Exhibit " B "	160,846.83
Adjusted Retained Earnings	<u>\$ 366,970.30</u>

Total Fund Equity 526,970.30

TOTAL LIABILITIES AND FUND EQUITY \$ 532,142.60

=====

Exhibit "A"

elb/10-11-85

YAP FISHING AUTHORITY
Yap State, Federated States of Micronesia
Western Caroline Islands 96943

STATEMENT OF OPERATIONS
For Eleven Months Ended August 31, 1985

Income:

Appropriations:	
Yap State Legislative Fund	\$ 125,000.00
FSM Congress Matching Fund	250,000.00
Total Appropriations	<u>\$ 375,000.00</u>

Commercial Operations:

Operating Income:

Sales	\$ 51,607.20
Service	1,272.21
Rent	2,932.50
Charter	17,750.00
Registration fees	80.00
Total	<u>\$ 73,641.91</u>

Less: Direct Operating Expenses:

Cost of Sales	\$ 52,724.72
Marine supplies expense	9,584.52
Freight-out	1,439.16
Freight-in	478.08
Store supplies expense	141.04
Commissions expense	191.13
Installation costs	7,190.82
Refrigeration expenses	1,015.98
Gasoline expenses	18,592.87
Total	<u>\$ 91,358.32</u>

Gross Loss from Commercial Operations (17,716.41)

TOTAL INCOME \$ 357,283.59

Less: Administrative and General Expenses:

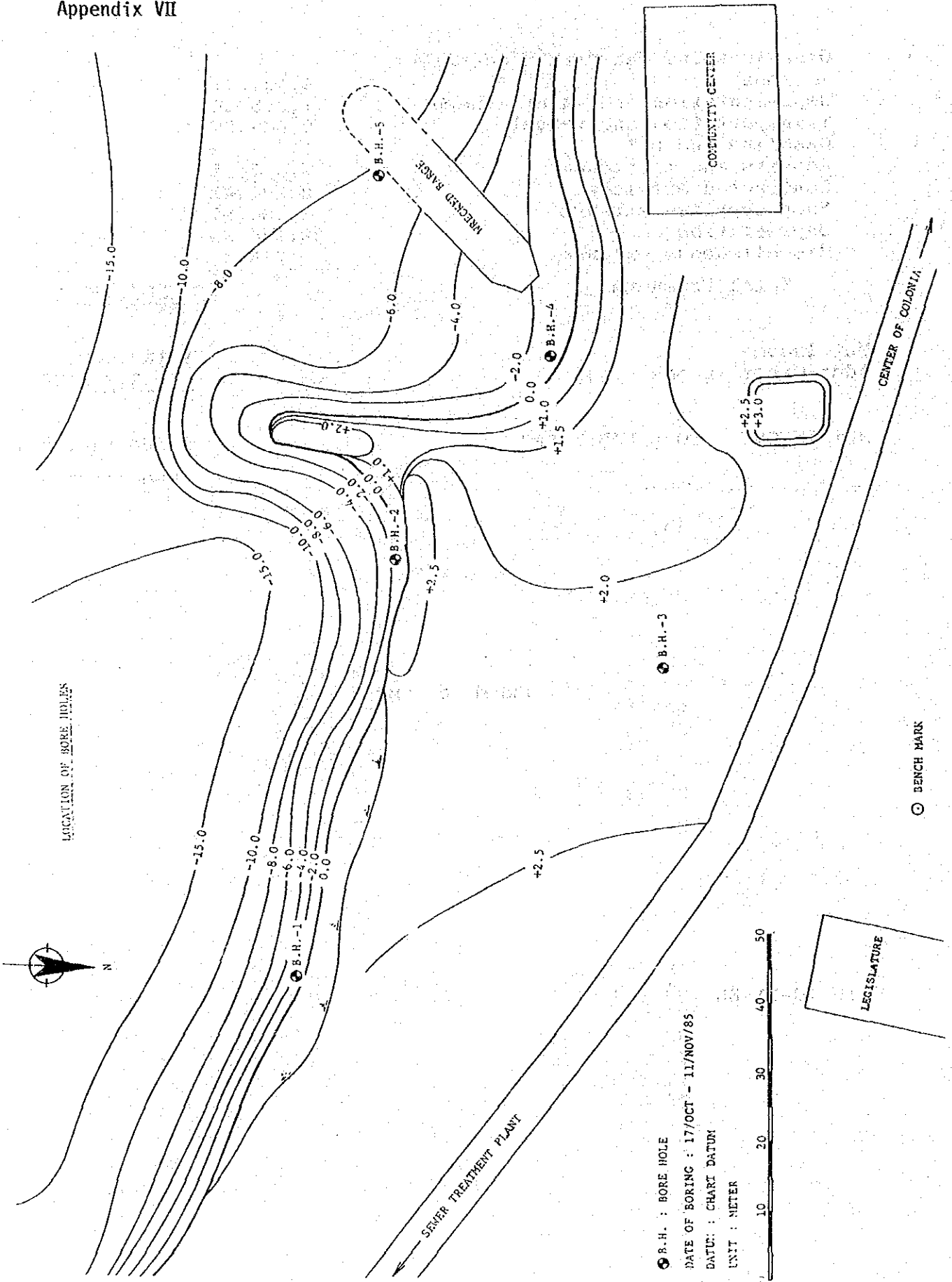
Salaries and wages	\$ 91,127.32
Overtime expense	3,938.62
Allowances and benefits	9,959.16
Per diem and bonus	9,241.30
Training and scholarship	4,463.13
SSS Premiums Contribution	1,565.77
Repatriation expenses	4,673.22
Office supplies expense	3,093.85
Interest and bank charges	410.36
Books and periodicals	781.42
Postage, telephone and telegraph	6,959.46
Freight and handling	326.56
Rent expense	2,272.50

Donations and charitable contributions	4,431.39	
Representation and entertainment	1,318.30	
Transportation and travel	9,568.87	
Gasoline and oil	1,404.79	
Repairs and maintenance	7,007.18	
Contracted services	2,297.83	
Shop supplies expense	490.97	
Depreciation	39,134.89	
Miscellaneous expenses	216.44	
Total Expenses		<u>204,683.15</u>
Net Income		\$ 152,600.44
Add: Other Income		<u>8,246.39</u>
NET INCOME - TO EXHIBIT "A"		\$ 160,846.83
		=====

Exhibit "B"

elb/10-11-85

Appendix VII



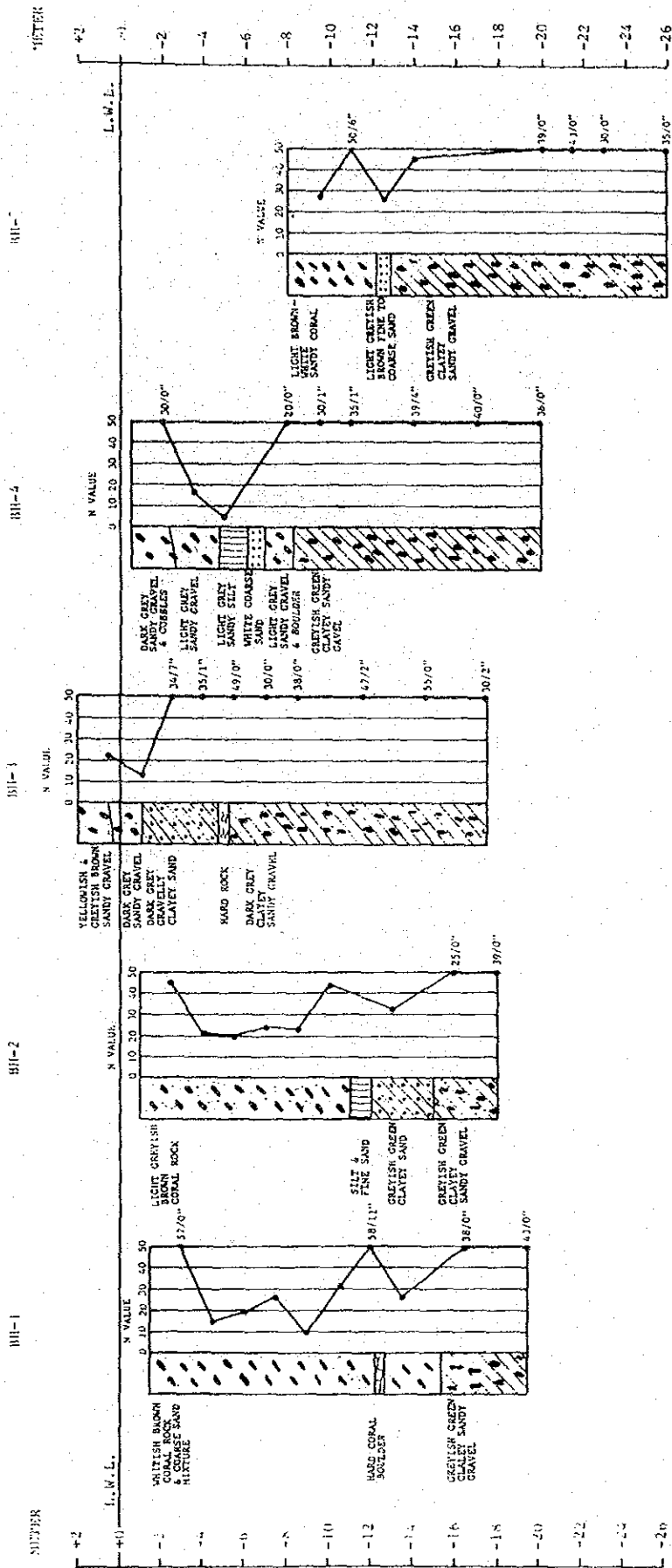
● B.H. : BORE HOLE

DATE OF BORING : 17/OCT - 11/NOV/85

DATUM : CHART DATUM

UNIT : METER

BORING LOGS



BH- : BORE HOLE NUMBER
 A/B : A : NUMBER OF BLOWS
 B : DEPTH OF PENETRATION (INCH)
 DATE OF BORING : 17/OCT - 11/NOV/85

JICA