

HOLE NO. 0041
 AREA LUBHUKU
 DATE DRILLED NOV. 4, 1981 - DEC. 4, 1981
 TOTAL DEPTH 235.48 m
 ELEVATION +272.3 m
 COORDINATE X++294,000 Y--77,430

JAPAN INTERNATIONAL COOPERATION AGENCY
 Borehole Log DD41
 Date: Sep. 1982 Prepared by: Y. Takahashi, J. Higashimura

Depth of Borehole (Stratim)	Apparent Thickness of Stratim	True Thickness of Stratim (M)	Dip Column of Stratim	Rock Description
3.00				SP
6.00				sandstone, medium to coarse grained, weathered
16.00				sandstone, medium to coarse grained, weathered
24.00				sandstone, medium to coarse grained, weathered
25.00				sandstone, medium to coarse grained, weathered
26.00				sandstone, medium to coarse grained, weathered
28.00				sandstone, medium to coarse grained, weathered
29.00				sandstone, medium to coarse grained, weathered
33.00				sandstone, coarse grained
35.00				sandstone, fine grained and shale, carbonaceous
38.00				shale, sandy, sandstone and dolerite
40.00				shale, sandy
41.20				shale, sandy
42.10				shale, sandy
43.20				shale, sandy
44.40				shale, sandy
45.40				shale, sandy
46.40				shale, sandy
47.40				shale, sandy
48.40				shale, sandy
49.40				shale, sandy
50.40				shale, sandy
51.40				shale, sandy
52.40				shale, sandy
53.40				shale, sandy
54.40				shale, sandy
55.40				shale, sandy
56.40				shale, sandy
57.40				shale, sandy
58.40				shale, sandy
59.40				shale, sandy
60.40				shale, sandy
61.40				shale, sandy
62.40				shale, sandy
63.40				shale, sandy
64.40				shale, sandy
65.40				shale, sandy
66.40				shale, sandy
67.40				shale, sandy
68.40				shale, sandy
69.40				shale, sandy
70.40				shale, sandy
71.40				shale, sandy
72.40				shale, sandy
73.40				shale, sandy
74.40				shale, sandy
75.40				shale, sandy
76.40				shale, sandy
77.40				shale, sandy
78.40				shale, sandy
79.40				shale, sandy
80.40				shale, sandy
81.40				shale, sandy
82.40				shale, sandy
83.40				shale, sandy
84.40				shale, sandy
85.40				shale, sandy
86.40				shale, sandy
87.40				shale, sandy
88.40				shale, sandy
89.40				shale, sandy
90.40				shale, sandy
91.40				shale, sandy
92.40				shale, sandy
93.40				shale, sandy
94.40				shale, sandy
95.40				shale, sandy
96.40				shale, sandy
97.40				shale, sandy
98.40				shale, sandy
99.40				shale, sandy
100.40				shale, sandy
101.40				shale, sandy
102.40				shale, sandy
103.40				shale, sandy
104.40				shale, sandy
105.40				shale, sandy
106.40				shale, sandy
107.40				shale, sandy
108.40				shale, sandy
109.40				shale, sandy
110.40				shale, sandy
111.40				shale, sandy
112.40				shale, sandy
113.40				shale, sandy
114.40				shale, sandy
115.40				shale, sandy
116.40				shale, sandy
117.40				shale, sandy
118.40				shale, sandy
119.40				shale, sandy
120.40				shale, sandy
121.40				shale, sandy
122.40				shale, sandy
123.40				shale, sandy
124.40				shale, sandy
125.40				shale, sandy
126.40				shale, sandy
127.40				shale, sandy
128.40				shale, sandy
129.40				shale, sandy
130.40				shale, sandy
131.40				shale, sandy
132.40				shale, sandy
133.40				shale, sandy
134.40				shale, sandy
135.40				shale, sandy
136.40				shale, sandy
137.40				shale, sandy
138.40				shale, sandy
139.40				shale, sandy
140.40				shale, sandy
141.40				shale, sandy
142.40				shale, sandy
143.40				shale, sandy
144.40				shale, sandy
145.40				shale, sandy
146.40				shale, sandy
147.40				shale, sandy
148.40				shale, sandy
149.40				shale, sandy
150.40				shale, sandy

Non-Core Drilling

JAPAN INTERNATIONAL COOPERATION AGENCY
 Borehole Log DD43
 Date: 4/1/83
 Scale: 1:200
 Drawn: 1983, prepared by: [signature]

HOLE NO. : DD43
 AREA : LUBHUKU
 DATE DRILLED : NOV. 23, 1981, DEC. 7, 1981 - JAN. 16, 1981
 TOTAL DEPTH : 320.13 m
 ELEVATION : +280.2 m
 COORDINATE : X = 2,941,000 Y = 78,790

Depth of Bore hole (m)	Apparent Thickness of Strata (M)	True Thickness of Strata (M)	Dip Column of Strata (M)	Rock Description
2.00				soil and clay, brown
5.00				sandstone, medium grained, weathered brownish grey
10.00				shale, weathered
15.00				sandstone, medium grained, weathered
31.00				shale, dark grey
33.00				shale and sandstone, fine grained
35.00				shale, dark grey
36.84				shale with thin sandstone beds, weathered
38.00				
49.80				shale with thin sandstone beds
50.24				sandstone, coarse grained, with brownish, conchoidal fracture, contains a few pebbles of quartz, calcareous, micaceous, silty, shaly, weathered
51.33				sandstone, coarse grained, with brownish, conchoidal fracture, micaceous, silty, shaly, weathered
52.31				sandstone, fine grained, light grey
55.32				sandstone, very fine grained, micaceous with shaly, irregularly cleaved
57.70				shale with weathered beds at the bottom, slumping
58.74				sandstone, medium grained, white
59.28				shale with thin sandstone beds, weathered
59.50				sandstone, fine grained, with horizontal shaly, irregularly cleaved, shaly, clay
61.86				sandstone, medium grained with fragments of shale and shaly
61.83				
66.30				shaly, medium grained, at the bottom, with shaly breccias
68.32				shaly, clay
68.66				transverse coarse grained with conchoidal fracture, white
69.32				sandstone, very fine grained, silty, shaly, grey
70.08				sandstone, very fine grained, silty, shaly, irregularly cleaved
70.30				shale with shaly sandy
70.50				
80.43				sandstone, coarse grained, hard, shaly, white
80.63				shaly, conchoidal
82.33				sandstone, coarse grained, white
83.50				sandstone, coarse grained, with shaly, irregularly cleaved
84.90				sandstone, very fine grained, shaly, sandy
85.47				sandstone, coarse grained
86.04				sandstone, very fine grained, light grey
87.02				shale with fragments of shaly
87.23				sandstone, coarse grained
89.30				sandstone, fine grained to shaly, sandy with pieces of conchoidal fracture
89.36				shaly, clay
91.33				shaly, coarse grained
93.23				sandstone, fine to medium grained with shaly, irregularly cleaved
94.04				sandstone, coarse grained, shaly, sandy, irregularly cleaved
94.35				sandstone, fine grained, shaly
95.01				shale with shaly
95.02				sandstone with fragments of shaly
95.32				sandstone, fine grained, light grey
96.30				sandstone, medium grained
96.36				shaly
96.82				sandstone, fine grained
97.02				shaly, silty, grained, dark green
97.45				sandstone, fine grained, conchoidal
97.83				shaly, clay, shaly
98.48				sandstone, coarse grained
99.58				shaly, coarse grained
99.82				sandstone, fine grained, with pieces of conchoidal fracture
100.67				shaly, coarse grained, shaly
101.12				shaly, coarse grained, shaly
102.72				sandstone, medium grained, shaly, some breccias of shaly and weathered limestone
106.24				shaly with sandstone fragments, shaly, or more shaly
107.45				
121.32				sandstone, medium grained, micaceous, white to light grey
134.05				
138.37				sandstone, medium grained, slumping with breccias of shaly, sandstone
139.10				shaly, coarse grained, shaly
139.33				sandstone, coarse grained, shaly, breccias of shaly, shaly, shaly
139.58				sandstone, medium grained, shaly, micaceous, shaly, shaly, shaly
140.00				shaly, coarse green
142.84				sandstone, fine grained, conchoidal
145.72				sandstone, medium grained, white
166.94				sandstone, fine grained, micaceous, intermediate shaly, cross-bedded

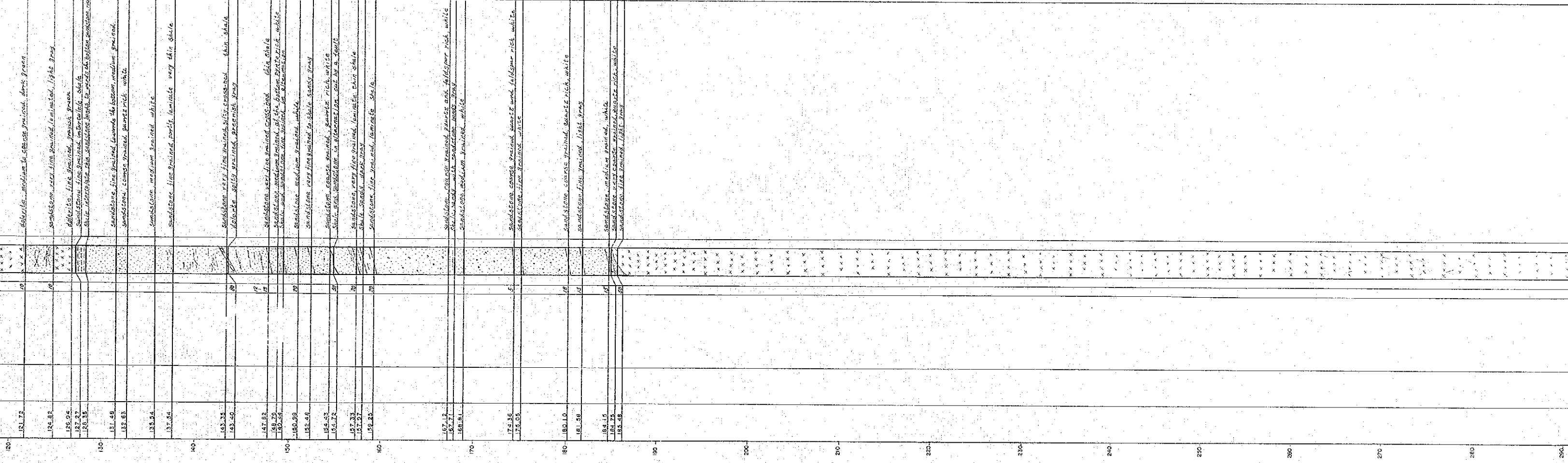
Non-Core Drilling

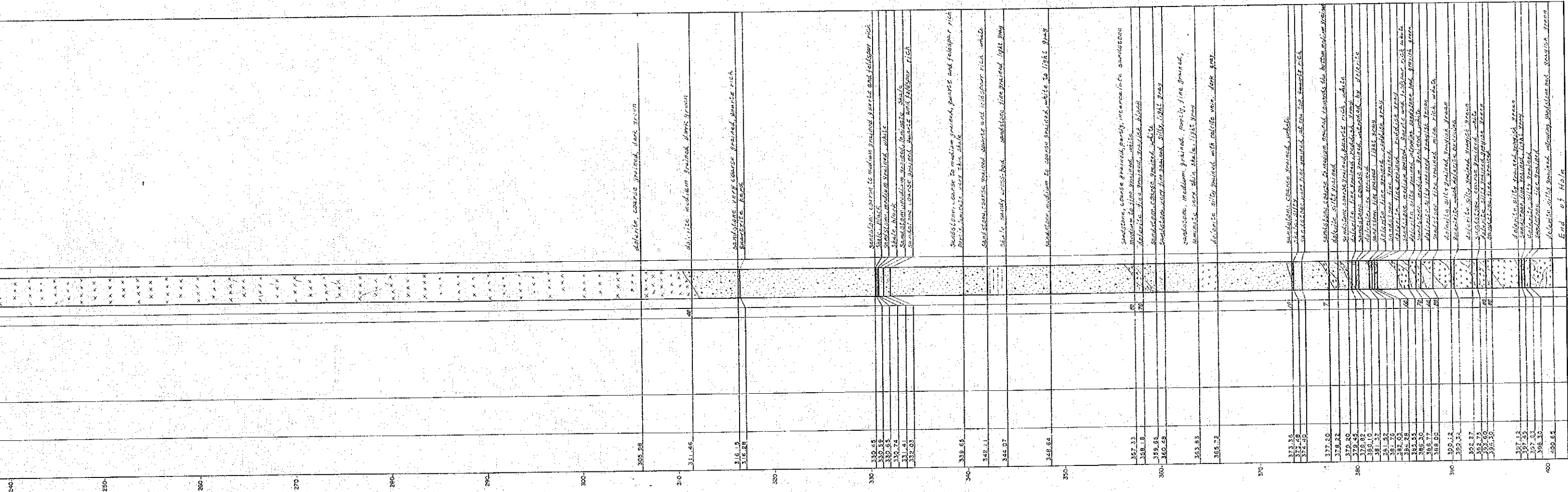
HOLE NO. 0045
 AREA LUBHUKU
 DATE DRILLED NOV.9-NOV.20,1981 DEC.8,1981-JAN.16,1982
 TOTAL DEPTH 400.65m
 ELEVATION +249.1m
 COORDINATE X=+2,941,000 Y=-80,960

JAPAN INTERNATIONAL COOPERATION AGENCY
 Borehole Log 0045
 Date 4w Scale 1:200
 Date Sep 1982 Prepared by I. Hatake & H. Hasegawa

Depth of Bore Hole (Strat.) (m)	Apparent Thickness of Strata (M) (Strat. Section)	True Thickness of Strata (M) (Strat. Section)	Dip Column of Strat. Section	Rock Description
1.00				Shale, brown
5.00				Shale, brown
10.00				Dark tan sandstone, fine grained, weathered sandstone, medium grained
11.00				
28.00				Sandstone, fine grained, weathered, yellowish gray
28.00				Sandstone, coarse grained, weathered
28.00				Sandstone, medium to coarse grained, weathered
30.00				Sandstone, very fine to fine grained, brownish gray
31.00				Sandstone, medium grained
32.00				Sandstone, very fine grained, weathered, brown
34.00				Sandstone, medium to coarse grained, light gray
34.38				Sandstone, coarse grained, weathered
35.00				Sandstone, coarse grained
35.98				Shale, weathered, tan, brown, dark gray
36.28				Shale, weathered, tan, brown, dark gray
37.15				Sandstone, medium to medium fine grained, weathered, gray
39.37				Sandstone, fine grained, weathered, gray
39.37				Sandstone, coarse grained, quartz and feldspar rich
39.30				
42.15				Shale and sandstone in alternation, dark gray, coarse brown
43.00				Sandstone, coarse grained, quartz, feldspar and feldspar rich, weathered
45.45				Sandstone, very fine grained, with thin shale, impure, gray, light gray
47.30				Shale, intercalated thin sandstone, dark gray
50.70				Shale & shale, sandy, at the bottom, intercalate, dark gray
52.25				Sandstone, medium grained, white, coarse brown
56.10				Sandstone, fine grained, micaceous, light gray
57.33				Shale and sandstone fine grained in alternation
58.70				Shale, intercalate thin sandstone, dark gray
59.50				Shale, gray, at the bottom, sandstone, dark gray
60.30				Shale and sandstone, fine grained in alternation, dark gray
61.70				Sandstone, fine to very fine grained, micaceous, light gray
63.95				Shale & shale, sandy, intercalate thin sandstone, dark gray
70.15				Sandstone, coarse to medium grained in parts, quartz and feldspar rich
70.75				Shale, weathered, brown, dark gray
71.45				Shale, weathered, brown, dark gray
72.65				Sandstone, very fine grained, coarse brown
75.37				Sandstone, medium to coarse, yellowish, white
77.82				Shale, sandy to sandstone, very fine grained, micaceous, brownish gray
78.70				Shale, fine grained, brown, dark gray
79.10				Shale, weathered, brown, dark gray
79.70				Shale & shale, sandy, intercalate thin sandstone, brown, dark gray
80.65				Sandstone, coarse to medium grained, in parts, quartz
82.98				Sandstone, fine grained
83.72				Shale, weathered, brown, dark gray
84.07				Shale, sandy, brown, dark gray
85.20				Sandstone, fine to very fine grained, micaceous, brownish gray
86.70				Sandstone, medium grained, white
89.50				
92.90				Sandstone, fine grained, intercalate very thin carbonaceous shale, brownish gray
94.50				Sandstone, medium grained, white
102.65				Sandstone, fine grained, with very thin shale, light gray
104.65				Sandstone, medium grained, with thin shale, white to light gray
107.37				Sandstone, medium to coarse grained, white
107.50				Sandstone, fine grained, at the top of the shale, light gray
108.30				Sandstone, medium grained, white
109.00				Sandstone, medium grained, white
111.27				Sandstone, medium grained, partly coarse grained, white
112.25				Sandstone, fine grained, light gray
112.42				Sandstone, very fine grained, light gray
112.92				Sandstone, fine grained, dark gray
121.72				Sandstone, medium to coarse grained, dark brown
124.82				Sandstone, very fine grained, brownish, light gray
126.94				Sandstone, fine grained, grayish green
127.27				Sandstone, fine grained, intercalate, shale
128.35				Shale, intercalate thin sandstone, brown, in middle of the bottom sandstone, dark gray
131.48				Sandstone, fine grained, towards the bottom, medium grained
132.63				Sandstone, coarse grained, quartz rich, white
135.54				Sandstone, medium grained, white
137.35				Sandstone, fine grained, partly laminar, very thin shale
143.35				Sandstone, very fine grained, white, towards the bottom
143.62				Sandstone, very fine grained, quartz rich, white
147.92				Sandstone, very fine grained, quartz rich, white
148.79				Sandstone, very fine grained, quartz rich, white

NON-CORE DRILLING





End of Hole

247.80					
248.50					
249.50					
250.50					
251.50					
252.50					
253.50					
254.50					
255.50					
256.50					
257.50					
258.50					
259.50					
260.50					
261.50					
262.50					
263.50					
264.50					
265.50					
266.50					
267.50					
268.50					
269.50					
270.50					
271.50					
272.50					
273.50					
274.50					
275.50					
276.50					
277.50					
278.50					
279.50					
280.50					
281.50					
282.50					
283.50					
284.50					
285.50					
286.50					
287.50					
288.50					
289.50					
290.50					
291.50					
292.50					
293.50					
294.50					
295.50					
296.50					
297.50					
298.50					
299.50					
300.50					
301.50					
302.50					
303.50					
304.50					
305.50					
306.50					
307.50					
308.50					
309.50					
310.50					
311.50					
312.50					
313.50					
314.50					
315.50					
316.50					
317.50					
318.50					
319.50					
320.50					
321.50					
322.50					
323.50					
324.50					
325.50					
326.50					
327.50					
328.50					
329.50					
330.50					
331.50					
332.50					
333.50					
334.50					
335.50					
336.50					
337.50					
338.50					
339.50					
340.50					
341.50					
342.50					
343.50					
344.50					
345.50					
346.50					
347.50					
348.50					
349.50					
350.50					
351.50					
352.50					
353.50					
354.50					
355.50					
356.50					
357.50					
358.50					
359.50					
360.50					
361.50					
362.50					
363.50					
364.50					
365.50					
366.50					
367.50					
368.50					
369.50					
370.50					
371.50					
372.50					
373.50					
374.50					
375.50					
376.50					
377.50					
378.50					
379.50					
380.50					
381.50					
382.50					
383.50					
384.50					
385.50					
386.50					
387.50					
388.50					
389.50					
390.50					
391.50					
392.50					
393.50					
394.50					
395.50					
396.50					
397.50					
398.50					
399.50					
400.50					
401.50					
402.50					

284 N. 116 E 1/4 Sec 11
 116 E 1/4 Sec 11
 116 E 1/4 Sec 11

JAPAN INTERNATIONAL COOPERATION AGENCY
 Borehole Log DD50
 Date: 1982.1.15
 Scale: 1:200
 Prepared by: Tamotsu Hatakeyama

HOLE NO. DD50
 AREA LUBHUKU
 DATE DRILLED JAN. 15, 1982 - FEB. 3, 1982
 TOTAL DEPTH 426.19 m
 ELEVATION +291.4 m
 COORDINATE X = +2,931,000, Y = -80,000

Depth of Bore Hole (Strata) (M)	Apparent Thickness of Sirata (M)	True Thickness of Sirata (M)	Dip Column of Sirata (M)	Rock Description
4.00				Silt, unstratified, brown
7.00				Sandstone, medium, brown, weathered
12.00				Argillaceous sandstone, to medium grained, weathered, brownish grey
13.00				Thin, dark brown
14.00				Silt, weathered, brownish grey
19.00				Silt, dark grey
23.00				Silt, carbonaceous
24.00				Silt, dark grey
26.73				Silt, carbonaceous and coal bright
28.45				Coal, carbonaceous
29.76				Coal, dark, bright, coal and silt, carbonaceous
30.00				Silt, carbonaceous
30.84				Coal, dark, bright, coal and silt
30.90				Silt, carbonaceous, dark, coal
31.70				Silt, carbonaceous
33.42				Silt, carbonaceous, dark, coal, silt, brown, coal, silt
35.35				Silt, carbonaceous
37.42				Silt, dark grey
38.55				Silt, some at the bottom, carbonaceous, very fine grained, dark grey
42.62				Carbonaceous coarses, present in parts, quartz and dolomite, red, white
43.89				Silt, carbonaceous and coal, silt, brown, bright coal
45.38				Silt, carbonaceous, with thin, bright coal
45.82				Coal, dark, bright, coal and silt, carbonaceous
46.24				Silt, carbonaceous, with thin, coal, brown
46.24				Coal, dark, brown, silt, coal
48.22				Silt, carbonaceous, with silt, coal, silt, brown, coal
49.07				Silt, carbonaceous, with silt, coal, silt, brown, coal
49.70				Silt, carbonaceous, with silt, coal, silt, brown, coal
50.48				Coal, dark, bright, coal and silt, carbonaceous
51.04				Silt, carbonaceous
53.30				Silt, carbonaceous
57.20				Silt, very, fine grained, dark grey (1.0m carbonaceous)
58.40				Silt, carbonaceous
58.60				Silt, carbonaceous, with thin, bright, coal, brown
60.61				Silt, coal
60.90				Silt, carbonaceous
61.60				Silt, carbonaceous
64.00				Silt, very, fine grained, dark grey
64.93				Silt, carbonaceous, with thin, bright, coal, brown
66.16				Coal, dark, bright, coal and silt, carbonaceous
67.70				Silt, sand, micaceous, dark grey
69.00				Sandstone, medium grained
72.87				Sandstone, coarse grained, white
73.31				Coal, dark, brown, silt, coal
73.81				Silt, carbonaceous, with thin, coal, silt, brown
74.31				Silt, carbonaceous, with thin, coal, silt, brown
75.34				Silt, carbonaceous, with thin, coal, silt, brown
80.13				Silt, sand, fine
82.85				Sandstone, fine grained, and silt, in alternation
85.88				Sandstone, medium grained, cross-bedded, very thin, silt, coal
88.07				Sandstone, medium grained, and coarse grained, in alternation
89.10				Coal, dark, brown, silt, coal, silt, brown
89.65				Silt, carbonaceous, with thin, coal, silt, brown
90.18				Sandstone, coarse grained, with carbonaceous silt
91.62				Silt and sandstone, very fine grained, in alternation, silt, coal
95.93				Sandstone, medium grained, partly, indurated, dark
96.92				Sandstone, coarse grained, white
103.02				Silt, indurated, thin, silt, (1.0m carbonaceous)
107.47				Sandstone, medium grained, white
109.32				Silt, indurated, thin, carbonaceous
118.04				Sandstone, fine grained, dark grey
131.50				Silt, carbonaceous, with thin, coal, silt, brown
133.25				Silt, carbonaceous, with thin, coal, silt, brown
135.27				Silt, carbonaceous, with thin, coal, silt, brown
140.95				Silt, carbonaceous, with thin, coal, silt, brown
140.95				Silt, carbonaceous, with thin, coal, silt, brown
141.82				Sandstone, medium grained, white, indurated, white
144.36				Sandstone, medium grained, with thin, silt, coal, silt, brown, white

Dip Logging
 Non-Cole

10

20

30

40

50

60

70

80

90

100

110

120

130

140

130	131.85	XXXX	dark, upright, thin, conditions, dark grey
	132.25	XXXX	conditions, medium ground, white
	133.67	XXXX	
140	140.05	XXXX	dark, upright, thin, conditions, dark grey
	140.55	XXXX	conditions, medium ground, white
	141.82	XXXX	
	144.15	XXXX	
150	155.85	XXXX	dark, upright, thin, conditions, dark grey
	156.05	XXXX	conditions, medium ground, white
	158.24	XXXX	
	159.00	XXXX	
	159.50	XXXX	
	160.32	XXXX	
	161.00	XXXX	
	163.00	XXXX	
	163.17	XXXX	
	164.02	XXXX	
	164.23	XXXX	
	167.12	XXXX	
	168.10	XXXX	
	169.75	XXXX	
	169.92	XXXX	
170	170.80	XXXX	dark, upright, thin, conditions, dark grey
	170.87	XXXX	conditions, medium ground, white
	180.13	XXXX	
	181.52	XXXX	
	182.52	XXXX	
	185.02	XXXX	
180	191.55	XXXX	dark, upright, thin, conditions, dark grey
	192.05	XXXX	conditions, medium ground, white
	196.51	XXXX	
190	201.22	XXXX	dark, upright, thin, conditions, dark grey
	203.64	XXXX	conditions, medium ground, white
	204.82	XXXX	
	205.43	XXXX	
	208.80	XXXX	
	210.68	XXXX	
	211.68	XXXX	
	212.20	XXXX	
	212.63	XXXX	
	212.70	XXXX	
	212.92	XXXX	
	215.31	XXXX	
	217.56	XXXX	
	218.61	XXXX	
	219.21	XXXX	
	219.62	XXXX	
	221.42	XXXX	
200	225.77	XXXX	dark, upright, thin, conditions, dark grey
	225.87	XXXX	conditions, medium ground, white
	226.11	XXXX	
	229.12	XXXX	
	229.70	XXXX	
	230.75	XXXX	
	231.50	XXXX	
	238.15	XXXX	
210	241.19	XXXX	dark, upright, thin, conditions, dark grey
	241.82	XXXX	conditions, medium ground, white
	242.37	XXXX	
	244.97	XXXX	
	245.10	XXXX	
	245.91	XXXX	
	246.91	XXXX	
	247.92	XXXX	
	248.92	XXXX	
	251.09	XXXX	
	252.44	XXXX	
	253.14	XXXX	
	255.84	XXXX	
220	259.57	XXXX	dark, upright, thin, conditions, dark grey
	260.16	XXXX	conditions, medium ground, white
	261.61	XXXX	
	266.11	XXXX	
	269.07	XXXX	
230	271.51	XXXX	dark, upright, thin, conditions, dark grey
	272.36	XXXX	conditions, medium ground, white
	272.58	XXXX	
	274.30	XXXX	
	277.75	XXXX	
240	280.51	XXXX	dark, upright, thin, conditions, dark grey
	281.34	XXXX	conditions, medium ground, white
	282.33	XXXX	
	283.76	XXXX	
	283.89	XXXX	
	284.61	XXXX	
	285.70	XXXX	
	287.16	XXXX	
	287.58	XXXX	
	288.00	XXXX	
	289.23	XXXX	
	289.59	XXXX	
	289.24	XXXX	
	290.58	XXXX	
250	303.80	XXXX	dark, upright, thin, conditions, dark grey
	304.50	XXXX	conditions, medium ground, white

JAPAN INTERNATIONAL COOPERATION AGENCY
 Borehole Log D051
 Date: 4.98 Scale: 1:200
 Date: Sep 1982 Project: Sphinctero-Metamorphic

HOLE NO.: D051
 AREA: LUBHUKU
 DATE DRILLED: OCT. 2, 1981 - OCT. 31, 1981
 TOTAL DEPTH: 441.39 m
 ELEVATION: +266.0 m
 COORDINATE: X=+2,935,000, Y=-78,001

Depth of Borehole (Strat.)	True Thickness of Strata (M.)	Dip Column of Strat. Section	Rock Description
5.00			SOIL
13.00			sandstone, very fine grained, silty, weathered.
14.00			sandstone, medium grained, weathered.
15.00			sandstone, coarse grained, weathered.
17.60			sandstone, fine grained, weathered.
19.60			COAL
24.68			sandstone, medium grained, coarse sandstone, fine grained.
25.80			shale, sandy, to sandstone, very fine grained.
26.30			shale, sandy, to sandstone, very fine grained.
27.68			shale, sandy, to sandstone, very fine grained.
33.60			sandstone, coarse grained, sandy, to sandstone, very fine grained.
35.00			sandstone, coarse grained, sandy, to sandstone, very fine grained.
37.90			sandstone, fine grained, sandy, to sandstone, very fine grained.
39.10			shale, sandy, to sandstone, very fine grained.
40.25			shale, sandy, to sandstone, very fine grained.
40.70			shale, sandy, to sandstone, very fine grained.
43.60			shale, sandy, to sandstone, very fine grained.
47.70			shale, sandy, to sandstone, very fine grained.
48.30			shale, sandy, to sandstone, very fine grained.
48.80			shale, sandy, to sandstone, very fine grained.
49.05			shale, sandy, to sandstone, very fine grained.
49.97			shale, sandy, to sandstone, very fine grained.
52.01			shale, sandy, to sandstone, very fine grained.
54.50			shale, sandy, to sandstone, very fine grained.
56.33			shale, sandy, to sandstone, very fine grained.
58.87			shale, sandy, to sandstone, very fine grained.
59.31			shale, sandy, to sandstone, very fine grained.
59.60			shale, sandy, to sandstone, very fine grained.
60.18			shale, sandy, to sandstone, very fine grained.
65.70			shale, sandy, to sandstone, very fine grained.
67.30			shale, sandy, to sandstone, very fine grained.
68.80			shale, sandy, to sandstone, very fine grained.
70.25			shale, sandy, to sandstone, very fine grained.
74.20			shale, sandy, to sandstone, very fine grained.
74.50			shale, sandy, to sandstone, very fine grained.
76.88			shale, sandy, to sandstone, very fine grained.
77.37			shale, sandy, to sandstone, very fine grained.
79.86			shale, sandy, to sandstone, very fine grained.
80.80			shale, sandy, to sandstone, very fine grained.
81.69			shale, sandy, to sandstone, very fine grained.
82.09			shale, sandy, to sandstone, very fine grained.
102.50			shale, sandy, to sandstone, very fine grained.
111.10			shale, sandy, to sandstone, very fine grained.
117.20			shale, sandy, to sandstone, very fine grained.
129.10			shale, sandy, to sandstone, very fine grained.
134.70			shale, sandy, to sandstone, very fine grained.
136.66			shale, sandy, to sandstone, very fine grained.
139.55			shale, sandy, to sandstone, very fine grained.
141.40			shale, sandy, to sandstone, very fine grained.
142.00			shale, sandy, to sandstone, very fine grained.
142.83			shale, sandy, to sandstone, very fine grained.
143.42			shale, sandy, to sandstone, very fine grained.
143.97			shale, sandy, to sandstone, very fine grained.
144.37			shale, sandy, to sandstone, very fine grained.
144.95			shale, sandy, to sandstone, very fine grained.

182.40	110			adulter. fine grained to silty with coarse
111.10				shale, fine grained, bluish, dark green.
117.20				shale, medium to coarse, grained, dark grey.
129.10				shale, very fine grained, brownish grey.
134.20				shale, coarse grained, dark grey.
138.86				shale, very fine grained, brownish grey.
139.35				shale, coarse grained, dark grey.
141.40				shale, fine grained, brownish grey.
142.80				shale, medium grained, muddy, coarse grained with carbonaceous shale irregularly
142.83				shale, fine grained, brownish grey.
143.95				shale, very fine grained, brownish grey.
144.87				shale, coarse grained, dark grey.
145.85				shale, medium grained, dark grey.
146.42				shale, very fine grained, brownish grey.
147.95				shale, coarse grained, dark grey.
148.02				shale, medium grained, dark grey.
149.11				shale, very fine grained, brownish grey.
149.33				shale, coarse grained, dark grey.
149.30				shale, medium grained, dark grey.
154.93				shale, coarse grained, dark grey.
156.54				shale, medium grained, dark grey.
158.89				shale, coarse grained, dark grey.
159.66				shale, very fine grained, brownish grey.
163.23				shale, medium to coarse grained, dark grey.
163.84				shale, coarse grained, dark grey.
165.27				shale, very fine grained, brownish grey.
168.64				shale, coarse grained, dark grey.
168.95				shale, medium grained, dark grey.
170.92				shale, very fine grained, brownish grey.
170.92				shale, coarse grained, dark grey.
174.50				shale, medium grained, dark grey.
174.72				shale, very fine grained, brownish grey.
175.02				shale, coarse grained, dark grey.
178.30				shale, medium grained, dark grey.
179.74				shale, very fine grained, brownish grey.
182.60				shale, coarse grained, dark grey.
184.20				shale, medium grained, dark grey.
188.50				shale, very fine grained, brownish grey.
188.82				shale, coarse grained, dark grey.
195.70				shale, medium grained, dark grey.
198.00				shale, very fine grained, brownish grey.
199.92				shale, coarse grained, dark grey.
200.22				shale, medium grained, dark grey.
202.24				shale, very fine grained, brownish grey.
202.37				shale, coarse grained, dark grey.
203.23				shale, medium grained, dark grey.
204.50				shale, very fine grained, brownish grey.
206.82				shale, coarse grained, dark grey.
208.32				shale, medium grained, dark grey.
209.82				shale, very fine grained, brownish grey.
210.24				shale, coarse grained, dark grey.
212.17				shale, medium grained, dark grey.
212.91				shale, very fine grained, brownish grey.
213.23				shale, coarse grained, dark grey.
214.23				shale, medium grained, dark grey.
214.49				shale, very fine grained, brownish grey.
215.81				shale, coarse grained, dark grey.
216.87				shale, medium grained, dark grey.
218.13				shale, very fine grained, brownish grey.
219.81				shale, coarse grained, dark grey.
217.88				shale, medium grained, dark grey.
222.23				shale, coarse grained, dark grey.
223.94				shale, very fine grained, brownish grey.
224.82				shale, medium grained, dark grey.
229.45				shale, very fine grained, brownish grey.
229.62				shale, coarse grained, dark grey.
232.76				shale, medium grained, dark grey.
232.86				shale, very fine grained, brownish grey.
232.91				shale, coarse grained, dark grey.
233.38				shale, medium grained, dark grey.
238.00				shale, very fine grained, brownish grey.
239.39				shale, coarse grained, dark grey.
245.79				shale, medium grained, dark grey.
250.93				shale, very fine grained, brownish grey.
252.70				shale, coarse grained, dark grey.
252.89				shale, very fine grained, brownish grey.
253.23				shale, medium grained, dark grey.
253.58				shale, very fine grained, brownish grey.
254.20				shale, coarse grained, dark grey.
256.10				shale, medium grained, dark grey.
257.87				shale, very fine grained, brownish grey.
261.15				shale, coarse grained, dark grey.
263.89				shale, very fine grained, brownish grey.
264.60				shale, medium grained, dark grey.
266.71				shale, very fine grained, brownish grey.
269.47				shale, coarse grained, dark grey.
267.12				shale, very fine grained, brownish grey.
266.18				shale, medium grained, dark grey.
270.04				shale, very coarse grained, dark grey.
271.18				shale, fine grained, brownish grey.
274.18				shale, coarse grained, dark grey.
274.93				shale, very fine grained, brownish grey.
276.20				shale, medium grained, dark grey.
276.00				shale, very fine grained, brownish grey.
276.27				shale, coarse grained, dark grey.

