

200- 200.70  
 201.00  
 202.00  
 203.00  
 204.00  
 205.00  
 206.00  
 207.00  
 208.00  
 209.00  
 210.00  
 211.00  
 212.00  
 213.00  
 214.00  
 215.00  
 216.00  
 217.00  
 218.00  
 219.00  
 220.00  
 221.00  
 222.00  
 223.00  
 224.00  
 225.00  
 226.00  
 227.00  
 228.00  
 229.00  
 230.00  
 231.00  
 232.00  
 233.00  
 234.00  
 235.00  
 236.00  
 237.00  
 238.00  
 239.00  
 240.00  
 241.00  
 242.00  
 243.00  
 244.00  
 245.00  
 246.00  
 247.00  
 248.00  
 249.00  
 250.00  
 251.00  
 252.00  
 253.00  
 254.00  
 255.00  
 256.00  
 257.00  
 258.00  
 259.00  
 260.00  
 261.00  
 262.00  
 263.00  
 264.00  
 265.00  
 266.00  
 267.00  
 268.00  
 269.00  
 270.00  
 271.00  
 272.00  
 273.00  
 274.00  
 275.00  
 276.00  
 277.00  
 278.00  
 279.00  
 280.00  
 281.00  
 282.00  
 283.00  
 284.00  
 285.00  
 286.00  
 287.00  
 288.00  
 289.00  
 290.00  
 291.00  
 292.00  
 293.00  
 294.00  
 295.00  
 296.00  
 297.00  
 298.00  
 299.00  
 300.00  
 301.00  
 302.00  
 303.00  
 304.00  
 305.00  
 306.00  
 307.00  
 308.00  
 309.00  
 310.00  
 311.00  
 312.00  
 313.00  
 314.00  
 315.00  
 316.00  
 317.00  
 318.00  
 319.00  
 320.00  
 321.00  
 322.00  
 323.00  
 324.00  
 325.00  
 326.00  
 327.00  
 328.00  
 329.00  
 330.00  
 331.00  
 332.00  
 333.00  
 334.00  
 335.00  
 336.00  
 337.00  
 338.00  
 339.00  
 340.00  
 341.00  
 342.00  
 343.00  
 344.00  
 345.00

JAPAN INTERNATIONAL COOPERATION AGENCY  
 Borehole Log DD7  
 Date: 49 Scale: 1:200  
 Date: Sep. 1982 Prepared by: Yamane, Hideo

HOLE NO. DD7  
 AREA LUBHUKU  
 DATE DRILLED JAN. 25, 1982 - FEB. 10, 1982  
 TOTAL DEPTH 340.4 m  
 ELEVATION +270.0 m  
 COORDINATE X = 2853.000, Y = 77.000

NON - CORE DRILLING

Depth of Bore hole (Strat.)	Apparent Thickness	True Thickness of Strata (M)	Dip Corner of Strat. Section	Rock Description
1.00				
3.00				Sandstone, medium to coarse grained, medium bedded.
7.00				Sandstone, fine grained, medium bedded, silty.
9.00				Sandstone, fine grained, medium bedded, silty.
17.00				Sandstone, fine to medium grained, medium bedded, silty.
19.00				Sandstone, fine to medium grained, medium bedded, silty.
20.00				Sandstone, medium grained, medium bedded, silty.
21.00				Sandstone, medium grained, medium bedded, silty.
25.00				Sandstone, fine grained, silty.
27.00				Sandstone, fine to medium grained, silty, white.
28.00				Sandstone, fine grained, silty, white.
28.30				Sandstone, fine grained, silty, white.
29.50				Sandstone, fine grained, silty, white.
30.72				Sandstone, coarse grained, silty.
31.43				Sandstone, coarse grained, silty.
31.60				Sandstone, coarse grained, silty.
34.40				Sandstone, fine grained, silty, white, light gray.
38.46				Sandstone, coarse grained, in the middle part, irregular silty and very fine grained sandstone.
39.00				Sandstone, medium grained, silty, white.
39.30				Sandstone, medium grained, silty, white.
41.04				Sandstone, fine grained, silty, intermediate coarse grained sandstone with calcareous streaks.
42.00				Sandstone, coarse grained, silty.
43.00				Sandstone, coarse grained, silty.
43.60				Sandstone, coarse grained, silty.
44.61				Sandstone, coarse grained, silty.
45.23				Sandstone, coarse grained, silty.
45.19				Sandstone, coarse grained, silty.
46.74				Sandstone, coarse grained, silty.
47.82				Sandstone, coarse grained, silty.
48.63				Sandstone, coarse grained, silty.
50.10				Sandstone, fine grained, silty, white.
50.85				Sandstone, medium grained, silty, white.
51.20				Sandstone, medium grained, silty, white.
55.55				Sandstone, fine grained, silty, white.
59.41				Sandstone, fine grained and silty, in a transition zone sandstone, coarse grained, silty, white.
59.77				Sandstone, coarse grained, silty, white.
60.55				Sandstone, coarse grained, silty, white.
61.63				Sandstone, coarse grained, silty, white.
61.80				Sandstone, coarse grained, silty, white.
66.33				Sandstone, coarse grained, silty, white.
67.35				Sandstone, coarse grained, silty, white.
68.49				Sandstone, coarse grained, silty, white.
69.30				Sandstone, coarse grained, silty, white.
69.82				Sandstone, coarse grained, silty, white.
71.11				Sandstone, coarse grained, silty, white.
71.68				Sandstone, coarse grained, silty, white.
71.85				Sandstone, coarse grained, silty, white.
72.52				Sandstone, coarse grained, silty, white.
72.57				Sandstone, coarse grained, silty, white.
72.63				Sandstone, coarse grained, silty, white.
72.82				Sandstone, coarse grained, silty, white.
74.73				Sandstone, coarse grained, silty, white.
76.09				Sandstone, coarse grained, silty, white.
79.53				Sandstone, medium grained, silty, light gray.
85.41				Sandstone, fine grained and silty, in transition sandstone, silty, white.
85.79				Sandstone, fine grained, silty, white.
87.29				Sandstone, medium grained, silty, white.
88.35				Sandstone, medium grained, silty, white.
88.73				Sandstone, medium grained, silty, white.
89.59				Sandstone, medium grained, silty, white.
95.05				Sandstone, medium grained, silty, white.
95.05				Sandstone, medium grained, silty, white.
98.55				Sandstone, fine grained, silty, white.
100.71				Sandstone, fine grained, silty, white.
101.00				Sandstone, fine grained, silty, white.
102.63				Sandstone, fine grained, silty, white.
103.07				Sandstone, fine grained, silty, white.
103.80				Sandstone, fine grained, silty, white.
105.68				Sandstone, fine grained, silty, white.
119.80				Sandstone, fine grained, silty, white.
135.70				Sandstone, coarse grained, silty, white.
136.50				Sandstone, coarse grained, silty, white.
137.05				Sandstone, coarse grained, silty, white.
138.32				Sandstone, coarse grained, silty, white.
150.00				Sandstone, coarse grained, silty, white.
150.50				Sandstone, coarse grained, silty, white.
151.40				Sandstone, coarse grained, silty, white.
155.00				Sandstone, coarse grained, silty, white.
156.50				Sandstone, coarse grained, silty, white.
158.58				Sandstone, coarse grained, silty, white.
159.00				Sandstone, coarse grained, silty, white.
159.50				Sandstone, coarse grained, silty, white.
160.00				Sandstone, coarse grained, silty, white.

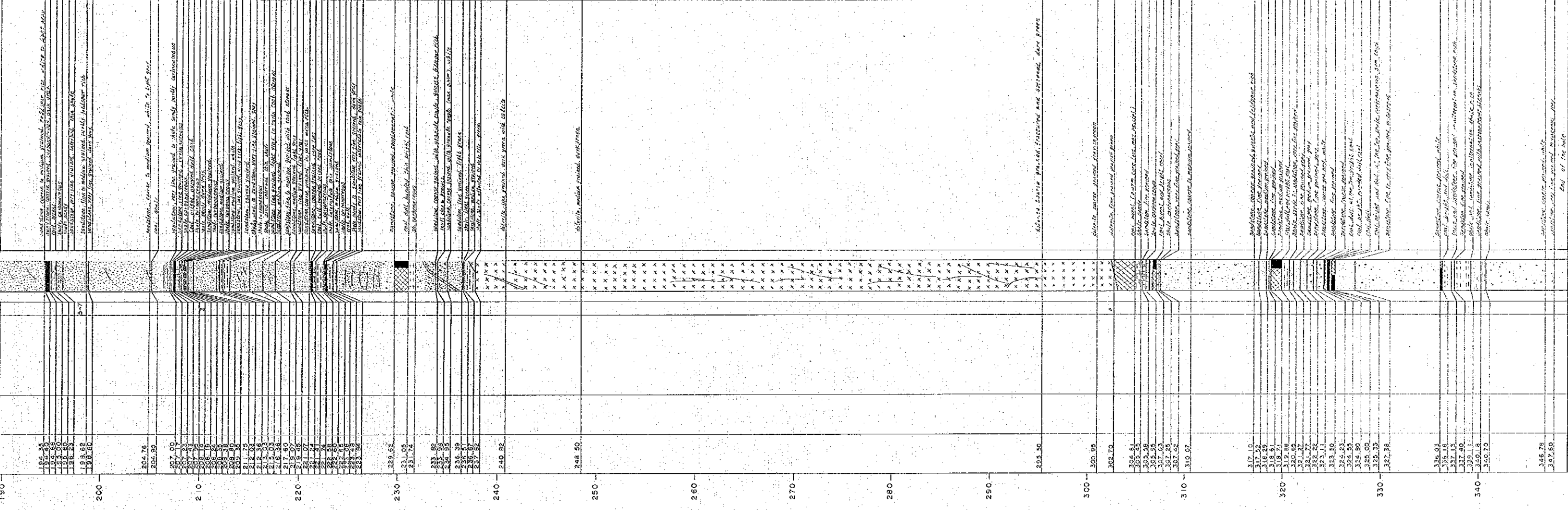












and some layers of middle Devonian, chiefly the D. and E. stages.

These layers are chiefly composed of sandstone and shale, with occasional thin layers of limestone.

The thickness of these layers varies from a few feet to several feet.

The rocks are generally well bedded and show signs of folding.

The fossils are small and consist of corals, graptolites, and other marine life.

The thickness of these layers is about 100 feet.

The rocks are composed of sandstone and shale.

The fossils are small and consist of corals, graptolites, and other marine life.

The thickness of these layers is about 100 feet.

The rocks are composed of sandstone and shale.

The fossils are small and consist of corals, graptolites, and other marine life.

The thickness of these layers is about 100 feet.

The rocks are composed of sandstone and shale.

The fossils are small and consist of corals, graptolites, and other marine life.

The thickness of these layers is about 100 feet.

The rocks are composed of sandstone and shale.

The fossils are small and consist of corals, graptolites, and other marine life.

The thickness of these layers is about 100 feet.

The rocks are composed of sandstone and shale.

The fossils are small and consist of corals, graptolites, and other marine life.

The thickness of these layers is about 100 feet.

The rocks are composed of sandstone and shale.

The fossils are small and consist of corals, graptolites, and other marine life.

The thickness of these layers is about 100 feet.

The rocks are composed of sandstone and shale.

The fossils are small and consist of corals, graptolites, and other marine life.

The thickness of these layers is about 100 feet.

The rocks are composed of sandstone and shale.

The fossils are small and consist of corals, graptolites, and other marine life.

The thickness of these layers is about 100 feet.

The rocks are composed of sandstone and shale.

The fossils are small and consist of corals, graptolites, and other marine life.

The thickness of these layers is about 100 feet.

The rocks are composed of sandstone and shale.

The fossils are small and consist of corals, graptolites, and other marine life.

The thickness of these layers is about 100 feet.

The rocks are composed of sandstone and shale.

The fossils are small and consist of corals, graptolites, and other marine life.

The thickness of these layers is about 100 feet.

The rocks are composed of sandstone and shale.

The fossils are small and consist of corals, graptolites, and other marine life.

The thickness of these layers is about 100 feet.

The rocks are composed of sandstone and shale.

The fossils are small and consist of corals, graptolites, and other marine life.

The thickness of these layers is about 100 feet.

The rocks are composed of sandstone and shale.

The fossils are small and consist of corals, graptolites, and other marine life.

The thickness of these layers is about 100 feet.

The rocks are composed of sandstone and shale.

The fossils are small and consist of corals, graptolites, and other marine life.

190  
200  
210  
220  
230  
240  
250  
260  
270  
280  
290  
300  
310  
320  
330  
340

JAPAN INTERNATIONAL COOPERATION AGENCY

HOLE NO. D09

AREA LUBUKU

DATE DRILLED JAN. 18, 1982 - FEB. 16, 1982

TOTAL DEPTH 395.40 m

ELEVATION +248.9 m

COORDINATE X++2932.900, Y++79.000

Borehole Log D09

Scale 1:100  
Date 1982  
Prepared by [unintelligible]

Depth of Borehole (Strata m)	Apparent Thickness of Strata (m)	True Thickness of Strata (m)	Do. Count of Strata Section	Rock Description
0.00				Sandstone very coarse grained, quartz and feldspar rich
9.00				Sandstone medium grained, weathered.
11.00				Silt. and sandstone, medium grained silt. rich
13.00				Sandstone, coarse grained and silt. sandstone rich, gray
15.00				Silt. gray.
22.23				Silt.
26.03				Silt. mottled thin sandstone dark gray
31.21				Silt. interbedded thin sandstone bands, dark gray
33.82				dolomite, medium grained, dark green
35.95				dolomite, silt. grained, dark gray
46.72				Silt. partly with thin sandstone bands, dark gray
50.18				sandstone, fine grained, with thin carbonaceous matter, impure, light gray
52.57				sandstone, fine grained, micaceous, light gray
62.50				Sandstone, fine to very fine grained, partly interbedded very thin silt. streaks, light gray
63.80				Sandstone, medium grained, in part, partly and dolomite, silt. with
68.75				sandstone, very fine to fine grained, interbedded silt. light gray
67.20				dolomite, silt. grained, dark green
98.57				dolomite, fine to silt. grained, gray
98.91				sandstone, fine grained, micaceous, silt.
103.14				dolomite, fine grained, gray
104.17				Sandstone, medium grained, micaceous, gray
106.67				Sandstone, fine grained, micaceous, bluish gray
106.66				Sandstone, coarse grained, micaceous, red, white
109.10				Sandstone, fine grained, bluish gray, coarse grained
110.03				Sandstone, medium to coarse grained, bluish gray, mic.
111.80				Sandstone, fine grained, with coarse, red, bluish gray
114.72				dolomite, fine to silt. grained, dark, bluish gray
118.40				dolomite, fine to medium grained, bluish gray
117.48				dolomite, silt. grained, dark gray
117.68				dolomite, medium grained, bluish green
121.75				dolomite, fine to silt. grained, bluish gray, coarse grained
123.19				dolomite, medium grained, bluish gray
150.82				dolomite, medium to coarse grained, dark green
157.28				dolomite, silt. grained, bluish gray

Non-Core Drilling

104.17	Sandstone, medium grained, quartz rich	XXXX
104.07	Sandstone, fine grained, laminated, bluish gray	XXXX
104.06	Sandstone, coarse grained, quartz rich, white	XXXX
104.10	Sandstone, fine grained, bluish gray, coarse broken	XXXX
110.03	Sandstone, medium to coarse grained, quartz rich, white	XXXX
111.80	Sandstone, fine grained, with calcite vein, bluish gray	XXXX
112.72	dolomite, fine to silty grained, dark grayish green	XXXX
116.40	dolomite, fine to medium grained, grayish green	XXXX
117.48	dolomite, silty grained, dark gray	XXXX
117.89	dolomite, medium grained, grayish green	XXXX
121.73	dolomite, fine to silty grained, bluish gray, coarse broken	XXXX
123.19	dolomite, medium grained, grayish green	XXXX
127.20	dolomite, fine to medium grained, dark green	XXXX
127.21	dolomite, silty grained, bluish gray	XXXX
137.30	Sandstone, fine grained, brownish light gray	XXXX
139.10	Sandstone, fine grained, and silty, in exposures, sandstone, etc.	XXXX
169.68	Sandstone, medium to fine grained, bluish gray	XXXX
169.75	dolomite, fine grained, dark gray	XXXX
169.80	Sandstone, fine grained	XXXX
204.48	dolomite, medium grained, grayish green	XXXX
207.66	dolomite, fine grained, grayish green	XXXX
209.03	dolomite, silty grained, grayish green	XXXX
209.23	Sandstone, very fine grained, light gray	XXXX
211.48	dolomite, silty grained, light brown	XXXX
212.40	dolomite, silty grained, medium dark green	XXXX
212.47	dolomite, silty grained, medium dark green	XXXX
213.38	Sandstone, coarse grained, quartz and calcite, rich white	XXXX
213.94	Sandstone, coarse grained, with calcite, etc.	XXXX
215.02	Sandstone, fine grained, calcite, etc. at the top, such rich	XXXX
216.18	dolomite, medium grained, bluish gray	XXXX
217.75	dolomite, fine grained, bluish gray	XXXX
219.45	dolomite, medium grained, bluish gray	XXXX
220.42	dolomite, coarse grained, white	XXXX
220.56	dolomite, coarse grained, white	XXXX
220.56	dolomite, coarse grained, white	XXXX
225.82	Sandstone, fine to very fine grained, early, laminae thin, calcite, light gray	XXXX
226.12	Sandstone, coarse grained, quartz and calcite, rich, white	XXXX
230.83	Slate, with sandstone bands, dark gray (over core 100)	XXXX
231.25	Sandstone, coarse grained, quartz and calcite, rich, white	XXXX
245.44	dolomite, fine grained, dark green	XXXX
245.45	dolomite, fine grained, dark green	XXXX
245.46	dolomite, fine grained, dark green	XXXX
245.47	dolomite, fine grained, dark green	XXXX
245.48	dolomite, fine grained, dark green	XXXX
245.49	dolomite, fine grained, dark green	XXXX
245.50	dolomite, fine grained, dark green	XXXX



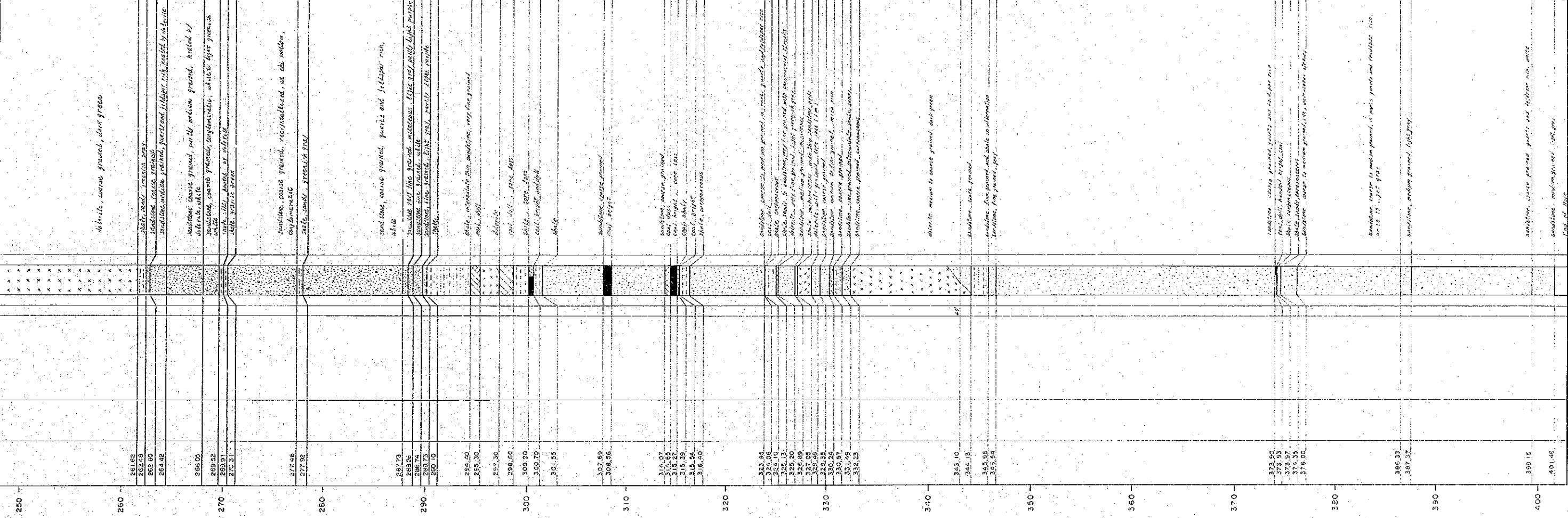
HOLE NO. : DD 10  
 AREA : LUBHUKU  
 DATE DRILLED : FEB 17 - MAR 8 1981  
 TOTAL DEPTH : 401.46 m  
 ELEVATION : 266.20 m  
 COORDINATE : X = 5,934,680, Y = 76,720

Scale 1:200  
 Date Sep. 1982 Prepared by Japanese Hydrogeology

Depth of Borehole (m)	Apparent Thickness of Strata (m)	True Thickness of Strata (m)	Dip Column of Strat. Section	Rock Description
0				
5.10				silt, weathered
7.40				sandstone, fine grained, silty, micaceous, weathered
10.00				sandstone, coarse grained, weathered
12.68				sandstone, very fine grained, silty, weathered
16.24				silt, weathered
19.48				sandstone, coarse grained
20.81				sandstone, fine grained, micaceous, with, irregularly
23.95				silt, interbedded with sandstone, fine grained
25.29				silt, sand, in the lower part, interbedded sandstone
27.12				sandstone, very fine grained, micaceous, very, a bit, fine
28.79				sandstone, medium grained, with, thin, micaceous, interstratified
30.30				sandstone, medium grained, with, thin, micaceous, interstratified
31.15				silt, in the lower part, weathered, coarse grained
33.93				silt, clay
35.10				sandstone and silt, in alternation
36.00				sandstone, fine grained, silty, fine
51.30				quartzite, fine grained, fine
51.80				quartzite, coarse grained, with
52.34				quartzite, coarse grained, with
53.67				quartzite, fine grained, with, micaceous, medium grained, weathered
54.34				quartzite, fine grained, with, micaceous, medium grained, weathered
54.98				quartzite, fine grained, with, micaceous, medium grained, weathered
55.30				quartzite, fine grained, with, micaceous, medium grained, weathered
55.70				quartzite, fine grained, with, micaceous, medium grained, weathered
55.95				quartzite, fine grained, with, micaceous, medium grained, weathered
56.94				quartzite, medium grained, with, micaceous, coarse, with
58.24				quartzite, coarse grained, with, micaceous, coarse, with
58.57				quartzite, coarse grained, with, micaceous, coarse, with
61.35				quartzite, coarse grained, with, micaceous, coarse, with
61.82				quartzite, coarse grained, with, micaceous, coarse, with
63.86				quartzite, coarse grained, with, micaceous, coarse, with
64.54				quartzite, coarse grained, with, micaceous, coarse, with
66.88				quartzite, coarse grained, with, micaceous, coarse, with
67.26				quartzite, coarse grained, with, micaceous, coarse, with
68.87				quartzite, coarse grained, with, micaceous, coarse, with
71.85				quartzite, medium grained, with, micaceous, coarse, with
73.25				quartzite, coarse grained, with, micaceous, coarse, with
74.00				quartzite, coarse grained, with, micaceous, coarse, with
74.00				quartzite, coarse grained, with, micaceous, coarse, with
75.74				quartzite, medium grained, with, micaceous, coarse, with
77.57				quartzite, medium grained, with, micaceous, coarse, with
77.74				quartzite, medium grained, with, micaceous, coarse, with
78.72				quartzite, medium grained, with, micaceous, coarse, with
79.58				quartzite, medium grained, with, micaceous, coarse, with
80.48				quartzite, medium grained, with, micaceous, coarse, with
81.11				quartzite, medium grained, with, micaceous, coarse, with
85.25				quartzite, medium grained, with, micaceous, coarse, with
86.07				quartzite, medium grained, with, micaceous, coarse, with
85.30				quartzite, fine grained, with, micaceous, coarse, with
90.45				quartzite, medium grained, with, micaceous, coarse, with
90.95				quartzite, medium grained, with, micaceous, coarse, with
91.00				quartzite, medium grained, with, micaceous, coarse, with
92.85				quartzite, coarse grained, with, micaceous, coarse, with
93.90				quartzite, coarse grained, with, micaceous, coarse, with
95.00				quartzite, coarse grained, with, micaceous, coarse, with
96.30				quartzite, coarse grained, with, micaceous, coarse, with
96.70				quartzite, coarse grained, with, micaceous, coarse, with
101.00				quartzite, coarse grained, with, micaceous, coarse, with
102.00				quartzite, coarse grained, with, micaceous, coarse, with
104.85				quartzite, coarse grained, with, micaceous, coarse, with
104.87				quartzite, coarse grained, with, micaceous, coarse, with
105.72				quartzite, coarse grained, with, micaceous, coarse, with
112.63				quartzite, coarse grained, with, micaceous, coarse, with
113.10				quartzite, coarse grained, with, micaceous, coarse, with
114.87				quartzite, coarse grained, with, micaceous, coarse, with
115.09				quartzite, coarse grained, with, micaceous, coarse, with
115.25				quartzite, coarse grained, with, micaceous, coarse, with
115.72				quartzite, coarse grained, with, micaceous, coarse, with
116.50				quartzite, coarse grained, with, micaceous, coarse, with
117.35				quartzite, coarse grained, with, micaceous, coarse, with
118.84				quartzite, coarse grained, with, micaceous, coarse, with
120.25				quartzite, coarse grained, with, micaceous, coarse, with
121.00				quartzite, coarse grained, with, micaceous, coarse, with
123.80				quartzite, coarse grained, with, micaceous, coarse, with
123.80				quartzite, coarse grained, with, micaceous, coarse, with
126.84				quartzite, coarse grained, with, micaceous, coarse, with
128.36				quartzite, coarse grained, with, micaceous, coarse, with
139.49				quartzite, coarse grained, with, micaceous, coarse, with
139.86				quartzite, coarse grained, with, micaceous, coarse, with
141.48				quartzite, coarse grained, with, micaceous, coarse, with
142.68				quartzite, coarse grained, with, micaceous, coarse, with
143.06				quartzite, coarse grained, with, micaceous, coarse, with
143.98				quartzite, coarse grained, with, micaceous, coarse, with
144.89				quartzite, coarse grained, with, micaceous, coarse, with
145.97				quartzite, coarse grained, with, micaceous, coarse, with
146.84				quartzite, coarse grained, with, micaceous, coarse, with
148.82				quartzite, coarse grained, with, micaceous, coarse, with
149.76				quartzite, coarse grained, with, micaceous, coarse, with
149.89				quartzite, coarse grained, with, micaceous, coarse, with
150.89				quartzite, coarse grained, with, micaceous, coarse, with
151.51				quartzite, coarse grained, with, micaceous, coarse, with
151.97				quartzite, coarse grained, with, micaceous, coarse, with
152.85				quartzite, coarse grained, with, micaceous, coarse, with







HOLE NO. DD 11  
 AREA LUBRUKU  
 DATE DRILLED FEB. 23 - MAR. 14  
 TOTAL DEPTH 322.85m  
 ELEVATION + 274.20m  
 COORDINATE X=12,937,220, Y=76,040

JAPAN INTERNATIONAL COOPERATION AGENCY  
 Borehole Log DD 11  
 Scale 1 : 200  
 Date May, 1981 Prepared by I. Hasegawa

Depth of Borehole (M)	Apparent Thickness of Strata (M)	True Thickness of Strata (M)	Dip Column of Strata Section	Rock Description
0				
7.30				shale
29.50				shale, coarse grained, sandstone, yellowish gray
36.80				shale, fine grained, dark gray
37.00				shale, medium grained, sandy, brownish, light gray
44.95				shale, indurated, sandstone, dark gray
45.10				shale, like sandstone, light gray
46.00				shale, like sandstone, light gray
50.05				shale, very fine grained with calcareous streaks
50.58				shale, like sandstone, light gray
51.60				shale, like sandstone, light gray
54.50				shale, like sandstone, light gray
54.80				shale, like sandstone, light gray
54.85				shale, like sandstone, light gray
55.10				shale, like sandstone, light gray
58.00				shale, like sandstone, light gray
59.30				shale, like sandstone, light gray
63.80				shale, like sandstone, light gray
64.10				shale, like sandstone, light gray
65.15				shale, like sandstone, light gray
66.80				shale, like sandstone, light gray
68.60				shale, like sandstone, light gray
69.00				shale, like sandstone, light gray
69.75				shale, like sandstone, light gray
69.90				shale, like sandstone, light gray
70.85				shale, like sandstone, light gray
72.90				shale, like sandstone, light gray
73.25				shale, like sandstone, light gray
73.87				shale, like sandstone, light gray
74.05				shale, like sandstone, light gray
74.70				shale, like sandstone, light gray
76.70				shale, like sandstone, light gray
77.80				shale, like sandstone, light gray
79.85				shale, like sandstone, light gray
81.80				shale, like sandstone, light gray
83.80				shale, like sandstone, light gray
84.70				shale, like sandstone, light gray
85.35				shale, like sandstone, light gray
86.30				shale, like sandstone, light gray
89.20				shale, like sandstone, light gray
89.80				shale, like sandstone, light gray
90.50				shale, like sandstone, light gray
92.50				shale, like sandstone, light gray
93.80				shale, like sandstone, light gray
95.00				shale, like sandstone, light gray
96.70				shale, like sandstone, light gray
97.75				shale, like sandstone, light gray
98.00				shale, like sandstone, light gray
99.10				shale, like sandstone, light gray
99.85				shale, like sandstone, light gray
100.85				shale, like sandstone, light gray
101.30				shale, like sandstone, light gray
101.60				shale, like sandstone, light gray
103.90				shale, like sandstone, light gray
105.50				shale, like sandstone, light gray
110.45				shale, like sandstone, light gray
111.80				shale, like sandstone, light gray
112.35				shale, like sandstone, light gray
119.85				shale, like sandstone, light gray
121.80				shale, like sandstone, light gray
122.90				shale, like sandstone, light gray
124.05				shale, like sandstone, light gray
127.25				shale, like sandstone, light gray
129.10				shale, like sandstone, light gray
130.00				shale, like sandstone, light gray
131.30				shale, like sandstone, light gray
132.00				shale, like sandstone, light gray
133.00				shale, like sandstone, light gray
133.95				shale, like sandstone, light gray
134.75				shale, like sandstone, light gray
136.35				shale, like sandstone, light gray
137.50				shale, like sandstone, light gray
137.80				shale, like sandstone, light gray
138.70				shale, like sandstone, light gray
140.40				shale, like sandstone, light gray
141.85				shale, like sandstone, light gray
143.30				shale, like sandstone, light gray
143.60				shale, like sandstone, light gray
144.05				shale, like sandstone, light gray
144.10				shale, like sandstone, light gray
144.20				shale, like sandstone, light gray
144.25				shale, like sandstone, light gray
144.30				shale, like sandstone, light gray
144.35				shale, like sandstone, light gray
144.40				shale, like sandstone, light gray
144.45				shale, like sandstone, light gray
144.50				shale, like sandstone, light gray
144.55				shale, like sandstone, light gray
144.60				shale, like sandstone, light gray
144.65				shale, like sandstone, light gray
144.70				shale, like sandstone, light gray
144.75				shale, like sandstone, light gray
144.80				shale, like sandstone, light gray
144.85				shale, like sandstone, light gray
144.90				shale, like sandstone, light gray
144.95				shale, like sandstone, light gray
145.00				shale, like sandstone, light gray
145.05				shale, like sandstone, light gray
145.10				shale, like sandstone, light gray
145.15				shale, like sandstone, light gray
145.20				shale, like sandstone, light gray
145.25				shale, like sandstone, light gray
145.30				shale, like sandstone, light gray
145.35				shale, like sandstone, light gray
145.40				shale, like sandstone, light gray
145.45				shale, like sandstone, light gray
145.50				shale, like sandstone, light gray



HOLE NO. DD13  
 AREA LUBHUKU  
 DATE DRILLED OCT. 7 1981 - NOV. 19 1981  
 TOTAL DEPTH 421.15 m  
 ELEVATION -248.7 m  
 COORDINATE X = 2,937,000 Y = 78,200

JAPAN INTERNATIONAL COOPERATION AGENCY  
 Borehole Log DD13  
 Drs. 41     Scale 1:200  
 Date Sep. 1982     Prepared by: Kawachi, Hideo

Depth of Borehole	Apparent Thickness of Strata	True Thickness of Strata (M)	Dip or Slant Section	Rock Description
2.00				sandstone, medium to coarse grained, white
5.00				shale, weathered
8.00				sandstone, medium grained and shale
7.00				shale
3.00				shale and sandstone
10.00				sandstone, coarse grained
11.00				sandstone, coarse grained
13.00				shale and sandstone, sandstone rich
17.00				shale
18.00				sandstone, fine grained and shale, sandstone rich
21.00				shale with sandstone
22.00				sandstone, medium grained
23.00				sandstone, coarse grained, grayish yellow
25.00				sandstone, coarse grained
26.00				shale, black
29.00				sandstone, coarse grained
31.54				sandstone, coarse grained with shale
33.87				sandstone, coarse grained to medium grained and shale in alternation
36.56				shale, coarse to fine, irregular sandstone, coarse grained
38.00				sandstone, coarse grained, black, fine
38.79				shale, coarse grained, black, fine, alternating
50.72				sandstone, medium to coarse grained, white
66.55				shale with very thin sandstone bands, very gray
67.55				shale sandy, grayish white
68.18				shale, fine grained, very gray
70				XXXX
71				XXXX
72				XXXX
73				XXXX
74				XXXX
75				XXXX
76				XXXX
77				XXXX
78				XXXX
79				XXXX
80				sandstone, coarse grained, dark gray
81				shale, headed by siltstone, grayish gray
82				
83				
84				
85				
86				
87				
88				
89				
90				shale with very thin sandstone beds
91				
92				
93				
94				
95				
96				
97				
98				
99				
100				sandstone, fine to medium grained, interbedded thin shale
101				shale and sandstone, fine grained in alternation, shale rich
102				sandstone, coarse grained, medium to coarse grained, shale, irregular
103				shale, coarse grained, grayish gray
104				shale, headed by siltstone, grayish gray
105				
106				
107				
108				
109				
110				
111				
112				
113				
114				
115				
116				
117				
118				
119				
120				
121				
122				
123				
124				
125				
126				
127				
128				
129				
130				
131				
132				
133				
134				
135				
136				
137				
138				
139				
140				
141				
142				
143				
144				
145				
146				
147				
148				
149				
150				
151				
152				
153				
154				
155				

Non-Core Drilling

