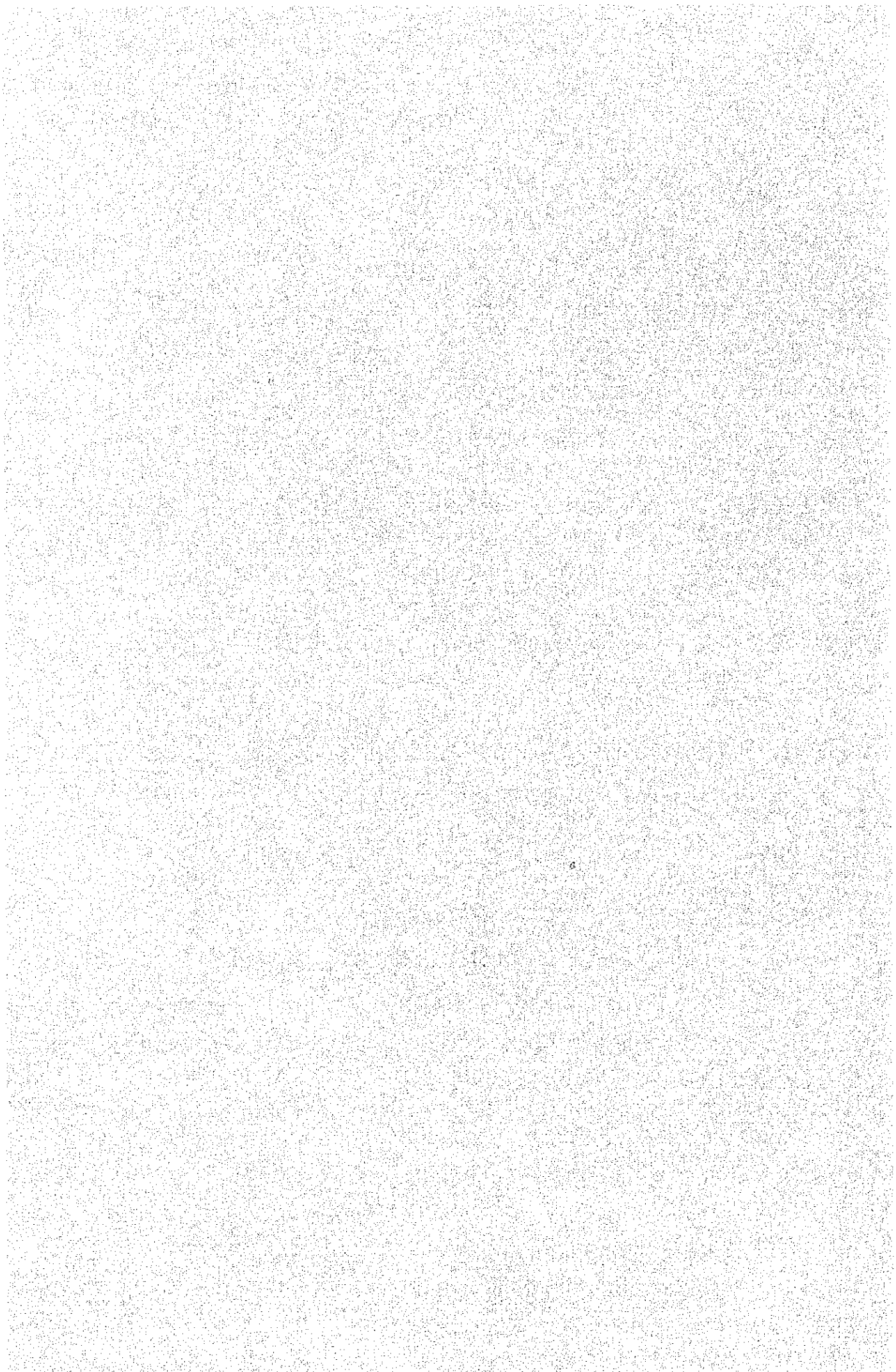


APPENDIX



Appendix 1 List of Preliminary Survey Team Members

Leader	Atsushi HATAKENAKA	Economic Cooperation Bureau, Ministry of Foreign Affairs
Member	Toshio KOBAYASHI	Minister's Secretariat, Ministry of Posts and Telecommunications
Member	Katsuhiko Oshima	Grant Aid Department, Japan International Corporation Agency (JICA)
Member	Hideto Yuu	Engineering Headquarters, Japan Broadcasting Corporation (NHK)

Appendix 2 List of Members and Itinerary of  
of Basic Design Study Team

Leader	Mitsuaki YAMAGATA	Economic Cooperation Bureau, Ministry of Foreign Affairs
Member	Teishiro TAKEYAMA	Radio Regulatory Bureau, Ministry of Posts and Telecommunications
Member	Akitoshi ASANO	Engineering Headquarters, Japan Broadcasting Corporation (NHK)
Member	Toshio SATO	Engineering Headquarters, NHK
Member	Jiro ONO	All Japan Television Co., Ltd.
Member	Hiroimi KISHIMOTO	Yokokawa Architects and Engineers Inc.

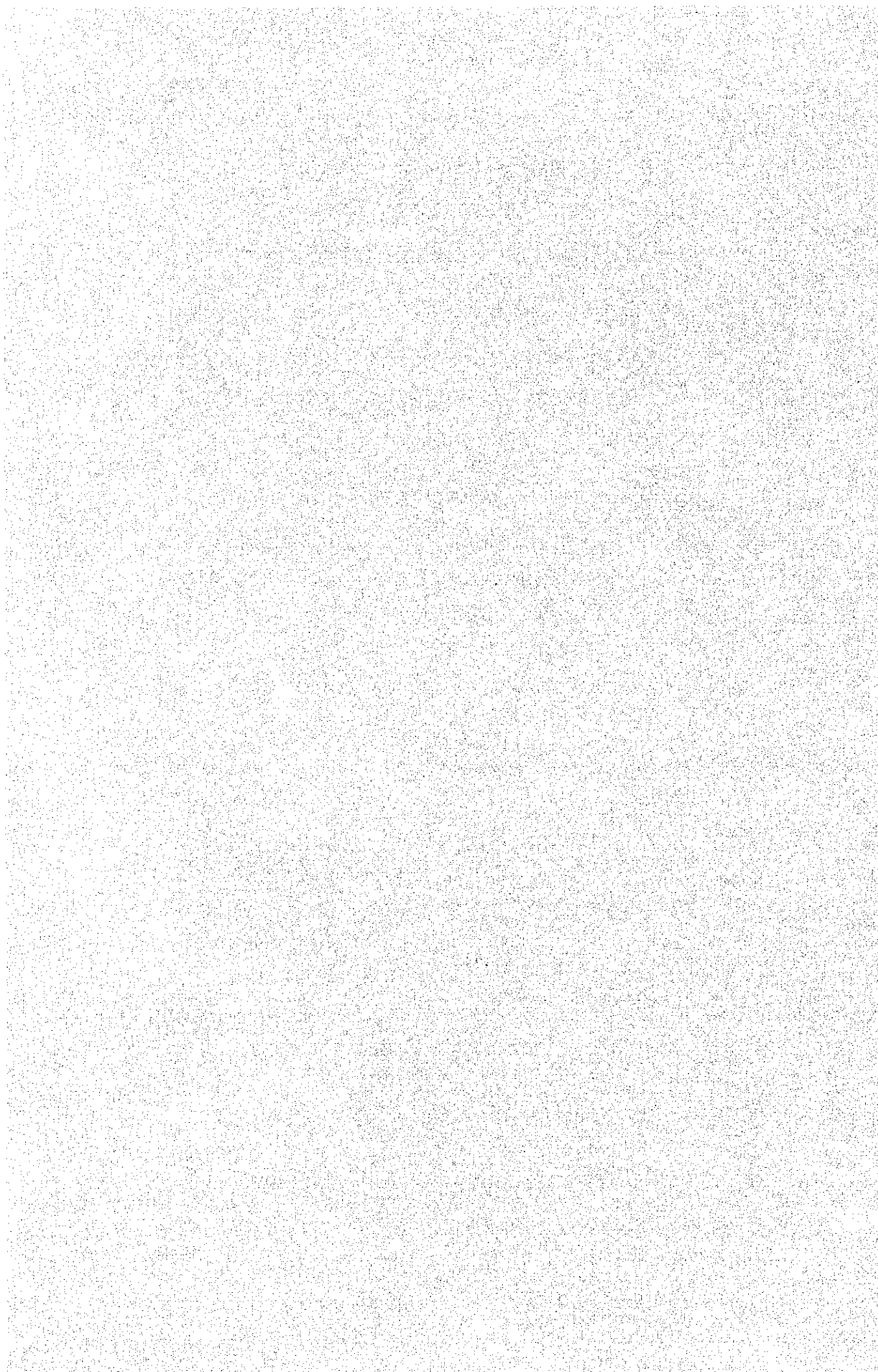
The itinerary of the basic design study team was as follows.

March 21 Leave Narita. Arrive in Bangkok.  
 22 Leave Bangkok and arrive in Rangoon.  
 Courtesy call to Japanese Embassy in Rangoon.  
 23 Courtesy call to the Ministry of Planning  
 and Finance and Ministry of Information.  
 First meeting at IBD.  
 24 Inspection of and meeting at earth station.  
 Meeting on programme production at IBD.  
 25 Meeting on studios, system converter, and  
 receiver at IBD. Meeting at Construction  
 Corporation (CC).  
 26 Meeting on broadcast equipment, power and  
 technical cooperation at IBD. Meeting at CC.  
 27 National military day  
 28 Holiday } Preparation of minutes  
 29 Meeting on broadcasting equipment and receivers  
 at IBD. Exchange of minutes.  
 30 Survey at relay spots. Survey of building.  
 Team Leader Yamagata leaves Burma for Japan.  
 31 Meeting on operation at IBD. Meeting at CC.  
 Survey on programme production. Soil survey.  
 April 1 Final meeting on school educational broadcasting  
 and distribution of receivers at IBD.

April 2 Report to the Japanese Embassy.  
Leave Rangoon. Stay in Bangkok.

3 Leave Bangkok. Arrive at Narita.

**ANNEX**





MINUTES OF DISCUSSION  
BETWEEN  
JAPANESE BASIC DESIGN SURVEY TEAM  
AND  
BURMESE TEAM ON THE "PROJECT FOR  
THE EXPANSION OF TV FACILITIES  
IN  
THE SOCIALIST REPUBLIC OF THE UNION OF BURMA"

\*\*\*\*\*



Agreed minutes of discussion

In response to the request made by the Government of Burma for the basic design study on the project for the expansion of TV facilities in the Socialist Republic of the Union of Burma (hereinafter referred to as "the Project"), the Government of Japan has dispatched, through the Japan International Cooperation Agency, a survey team headed by Mr. Yamagata to carry out the basic design survey from March 21, 1982.

The team has conducted field survey and held a series of discussions and exchanged views with the Burmese authorities concerned as to the Project.

Both parties have agreed to recommend to their respective Governments to examine the results of the survey attached herewith toward the realization of the Project.

March 29, 1982.

.....  
.....  
.....

Mitsuaki Yamagata  
Leader of the Japanese  
Basic Design Survey Team

.....  
.....  
.....

U Tin Aung Tun  
Director General, IBD  
Leader of the Burmese Team  
Ministry of Information

...the ... of ...  
...the ... of ...  
...the ... of ...  
...the ... of ...

...the ... of ...  
...the ... of ...  
...the ... of ...  
...the ... of ...

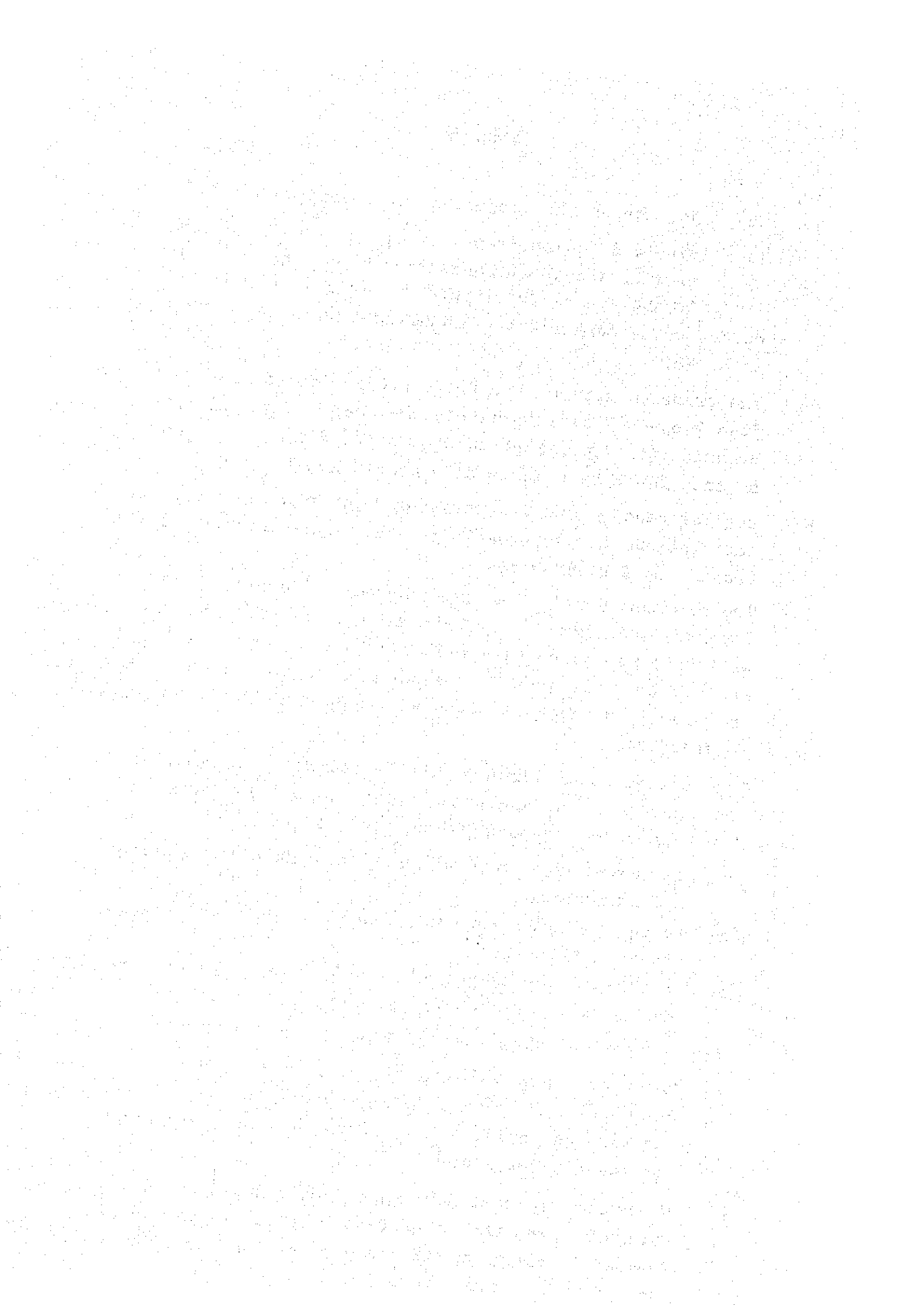
...the ... of ...  
...the ... of ...  
...the ... of ...  
...the ... of ...

...the ... of ...  
...the ... of ...  
...the ... of ...  
...the ... of ...

...the ... of ...  
...the ... of ...  
...the ... of ...  
...the ... of ...

## MINUTES

1. The objective of the Project is to provide a studio building, facilities and equipment necessary for TV broadcasting in order to increase the broadcasting hours with the view to economic and social development as well as to promote educational, moral, and cultural standards of the general public in Burma.
2. The proposed site of the Project (hereinafter referred to as "the Project Site") is within the compound of Information and Broadcasting Department Headquarters, Prome Road, Rangoon, Burma. The site plan is attached in Annex I.
3. The Information and Broadcasting Department, the Ministry of Information, is responsible for the implementation of the Project on Burmese side.
4. The Japanese Survey Team will convey the desire of the Government of Burma to the Government of Japan that the latter will take necessary measures to cooperate in implementing the Project and will provide the building and other items as listed in Annex II within the scope of Japanese economic cooperation in grant form.
5. The Government of Burma will take necessary measures on condition that the grant assistance by the Government of Japan is to be extended to the Project:
  - (a) to provide data and information necessary for design and construction,
  - (b) to secure lands necessary for the construction of the studio building,
  - (c) to carry out site preparation such as clearing, leveling etc. before commencement of the construction,
  - (d) to provide other items listed in Annex III,
  - (e) to ensure prompt unloading and customs clearance in Burma of imported materials and equipment for the construction and also to facilitate the internal transportation for these materials,
  - (f) to exempt Japanese nationals from customs duties, internal taxes and other fiscal levies which may be imposed in Burma on the occasion of the supply of goods and services for construction,

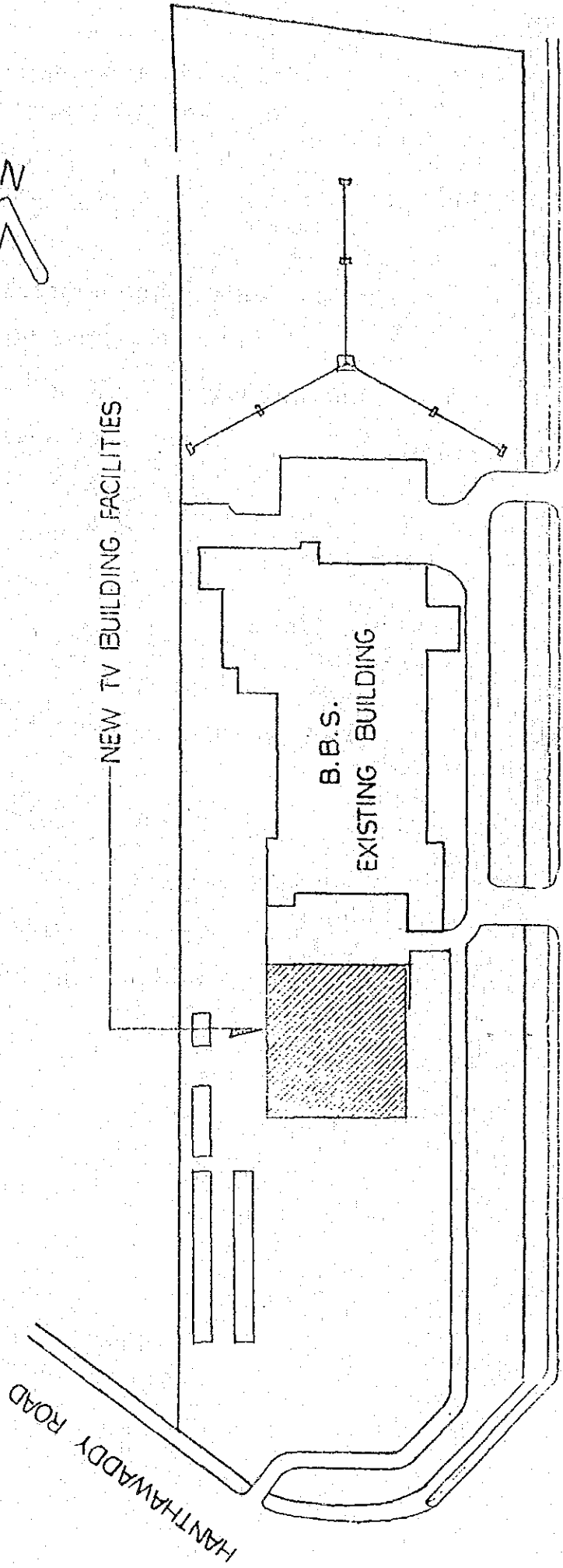
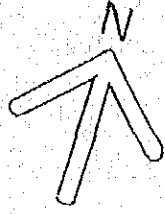


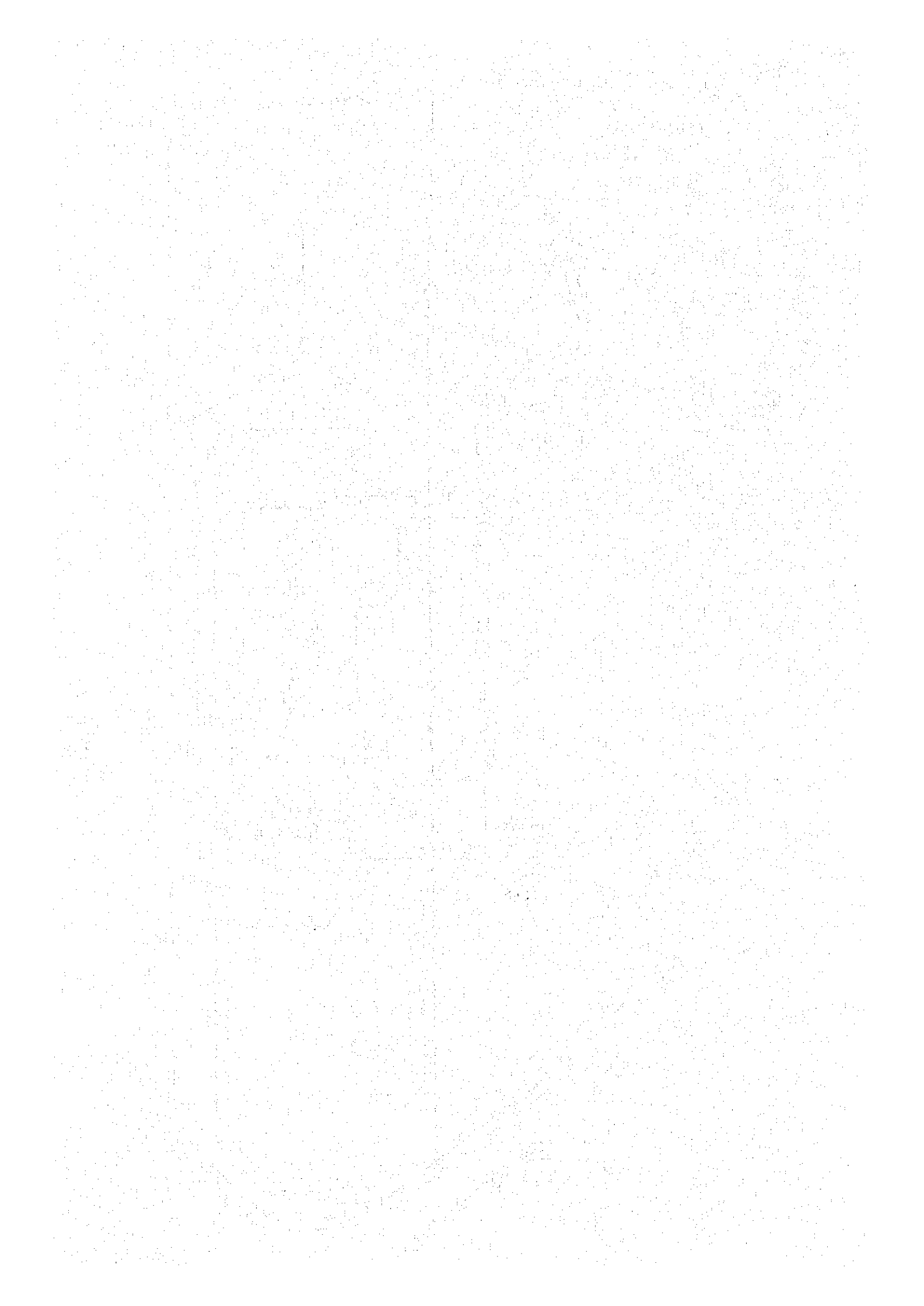
- (g) to provide and accord necessary permissions, licences and other authorization required for carrying out the Project and
- (h) to bear all the expenses, other than those to be borne by the grant assistance, necessary for the execution of the Project.





Annex I





Items requested by the Government of Burma the cost of which will be borne by the Government of Japan

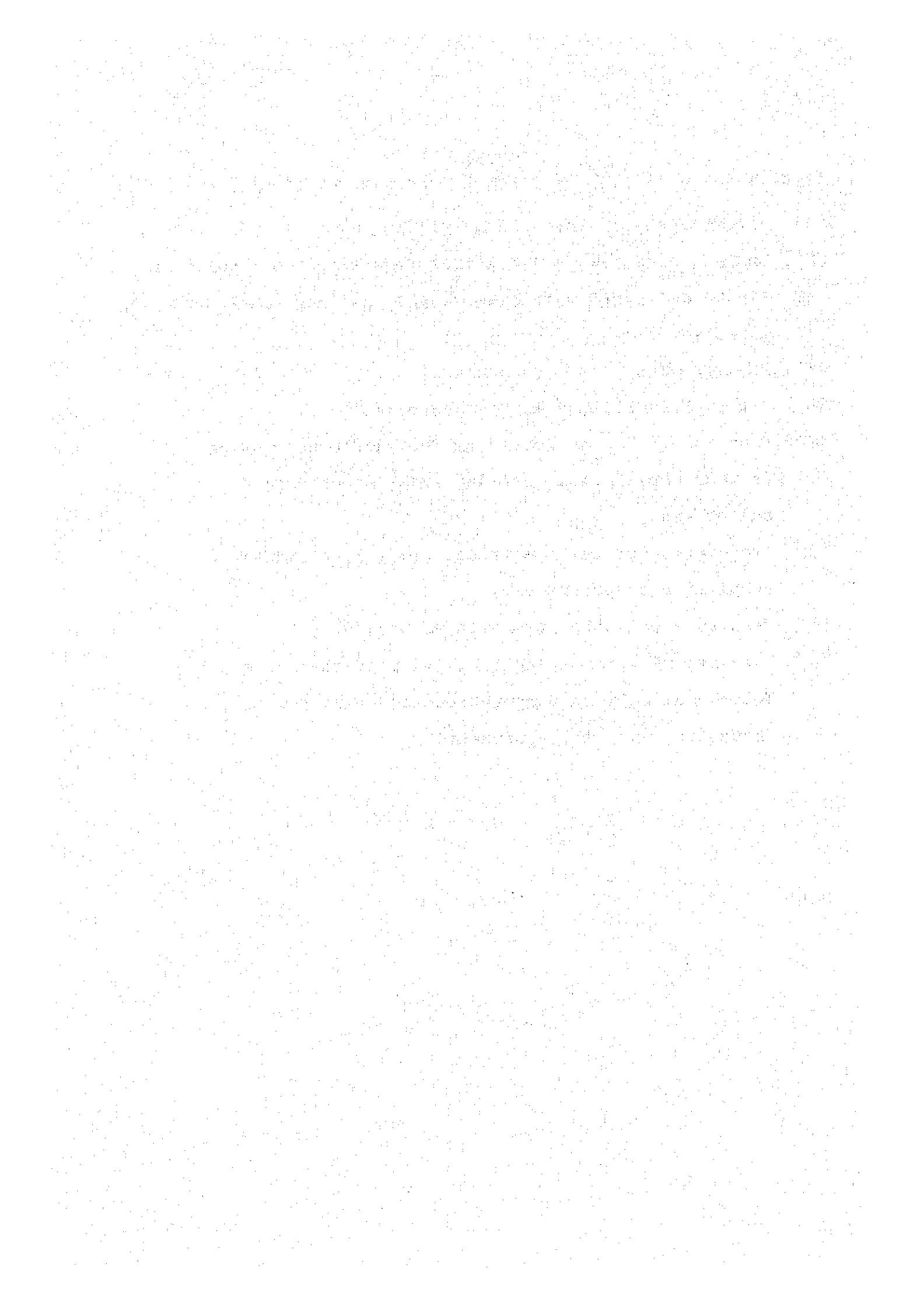
- (1) A studio building consisting of following rooms:
  - (a) Studio suites.
  - (b) Rooms related to programme production.
  - (c) Master control room .
  - (d) Rooms for the ancillary equipment .
  - (e) Other necessary rooms .
  
- (2) Facilities and equipment :
  - (a) Studio suite equipment.
  - (b) Recording & playback equipment .
  - (c) Master control equipment .
  - (d) Power supply equipment except engine generator.
  - (e) Telecine equipment .
  - (f) Outside Broadcasting Van .
  - (g) System converter for international programmes with programme link equipment.
  - (h) Other necessary equipment for TV broadcasting .



Annex III

Items whose cost will be borne by the Government of Burma;

- (1) Water supply to the studio building.
- (2) Drainage and sewage facilities from the studio building.
- (3) Electrical power main line to the existing studio building sub-station.
- (4) Telephone line and equipment.
- (5) External facilities and landscaping.
- (6) Provision of space necessary for such construction as temporary office, working area, stock yards and others.
- (7) Arrangement of the electrical power line and water supply for temporary use.
- (8) Furniture and other utensils as necessary.
- (9) Preparatory work at the facilities of the Posts and Telecommunications Corporation necessary for the installation of the equipment.



MINUTES OF DISCUSSION  
ON  
THE PROJECT FOR EXPANSION OF  
TV FACILITIES IN THE SOCIALIST REPUBLIC OF THE UNION OF BURMA

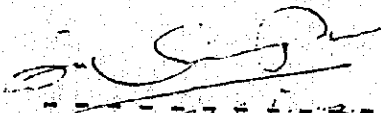
A mission dispatched by the Japan International Cooperation Agency (JICA) visited Burma from 13th to 18th June 1982 for the purpose of submission and explanation of the Draft Final Report of the Basic Design Study on the Project for Expansion of TV Facilities (the Project).

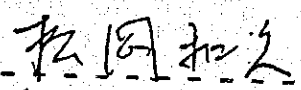
The Mission had series of discussions with the Foreign Economic Relations Department of the Ministry of Planning and Finance, the Information and Broadcasting Department (IBD) of the Ministry of Information, Construction Corporation, Heavy Industries Corporation, Electric Power Corporation, Post and Telecommunication Corporation and other authorities concerned of the Government of Burma.

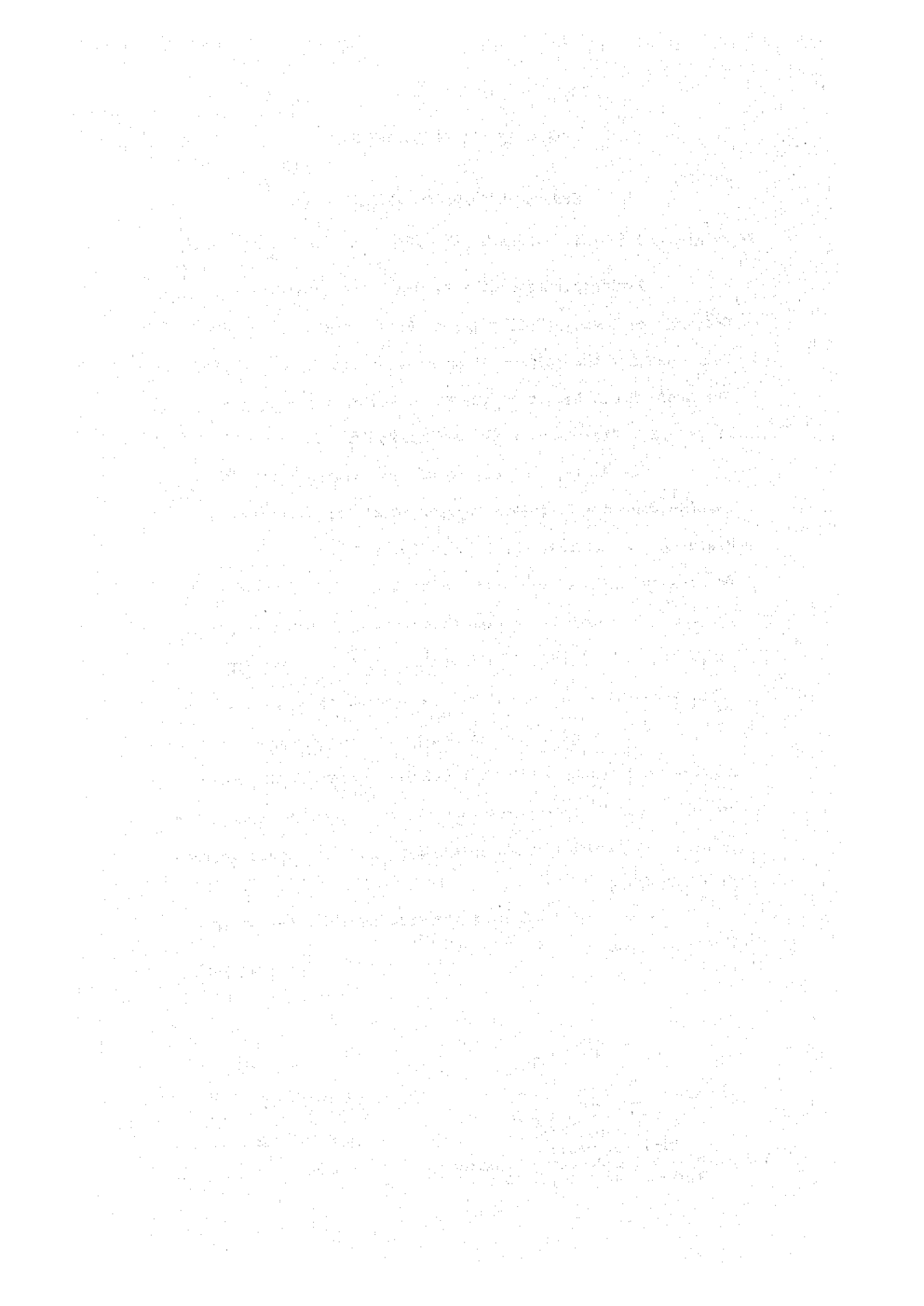
Both parties have agreed to recommend their respective Governments and authorities concerned to examine the major points of understanding reached between them, which is attached to the minutes as Annex 1, for the implementation of the Project.

A list of participants during the discussions is shown in Annex 2.

18th June 1982  
Rangoon

  
-----  
(U TIN AUNG TUN)  
Director General  
Information & Broadcasting Department  
Ministry of Information

  
-----  
(KASUHISA MATSUOKA)  
Leader  
JICA Mission





MAJOR POINTS OF UNDERSTANDING

I. Basic Design

The Burmese side was satisfied with the basic design proposed in the Draft Final Report. Appropriate alterations agreed during discussions will be incorporated in the Final Report as follows:-

- (1) Basic design of air conditioning and ventilation system.
- (2) Basic design of infrastructure facilities such as for water supply, drainage, sewage, telephone and electric power.
- (3) Basic design of outdoor works.
- (4) Installation of universal converter at the Post and Telecommunication Corporation Earth Station at Toegyaungalay and provision of modules for NTSC System at back haul link from Toegyaungalay to Regional Centre.
- (5) To provide microwave link between Regional centre and IBD.

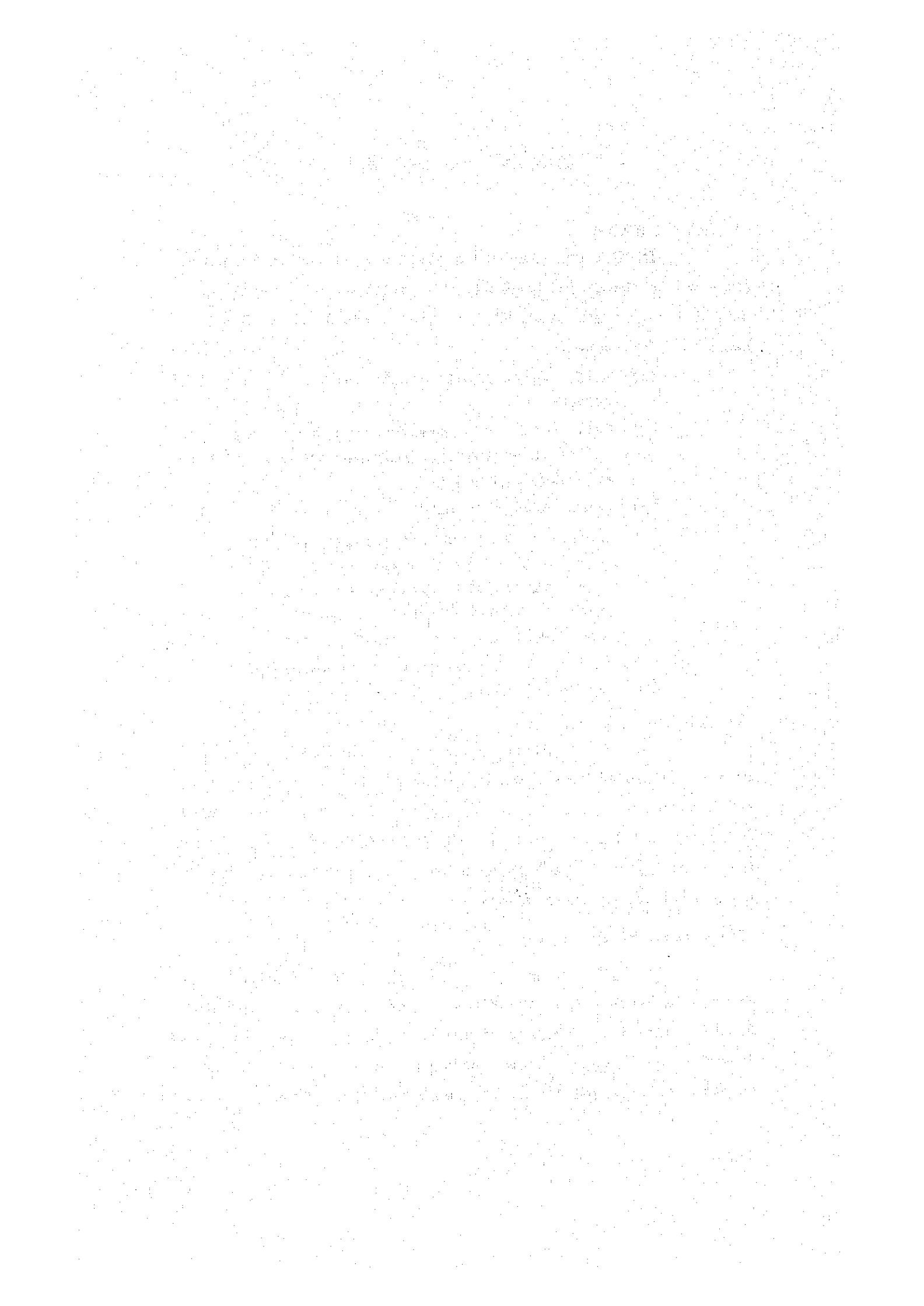
II. Executing Agency

The IBD is the executing agency for the Project and is responsible for the implementation of the preparatory works and construction works of the Project. The IBD will establish a Project Management Office in the IBD Headquarters and appoint a well qualified Project Manager and adequate staff for the implementation of the Project.

III. Consulting Services

Both parties agreed on the urgent need to appoint one or more Japanese consulting firms to participate in the Basic Design Study of the Project after the signing of the Exchange of Note for the Project between the two Governments, in view of shortage of time and for smooth implementation of the Project.

車 7



IV. Construction Schedule

Both parties will try their best to complete the Project as early as possible. To accelerate the construction works the draft documents of detail engineering services should be submitted by the middle of September 1982.

V. Burmese Contribution to the Project

The IBD shall execute in a timely manner their contribution items described as follows:-

1. Preparatory Works.

1-1. Submission of soil investigation report including boring data, soil bearing capacity, soil mechanical testing data by the end of June 1982, and groundwater level in the rainy season by the end of August 1982.

1-2. Preparation of the topographical map of construction site at a scale of 1:200 or nearest with level of 10 metre grids by the end of July 1982.

1-3. Provision of space necessary for such construction as temporary office, working area, stock yard and others, by the end of November 1982.

1-4. Provision of temporary electric power of 400V 50KVA, water supply and drainage facilities for construction works, by the end of November 1982.

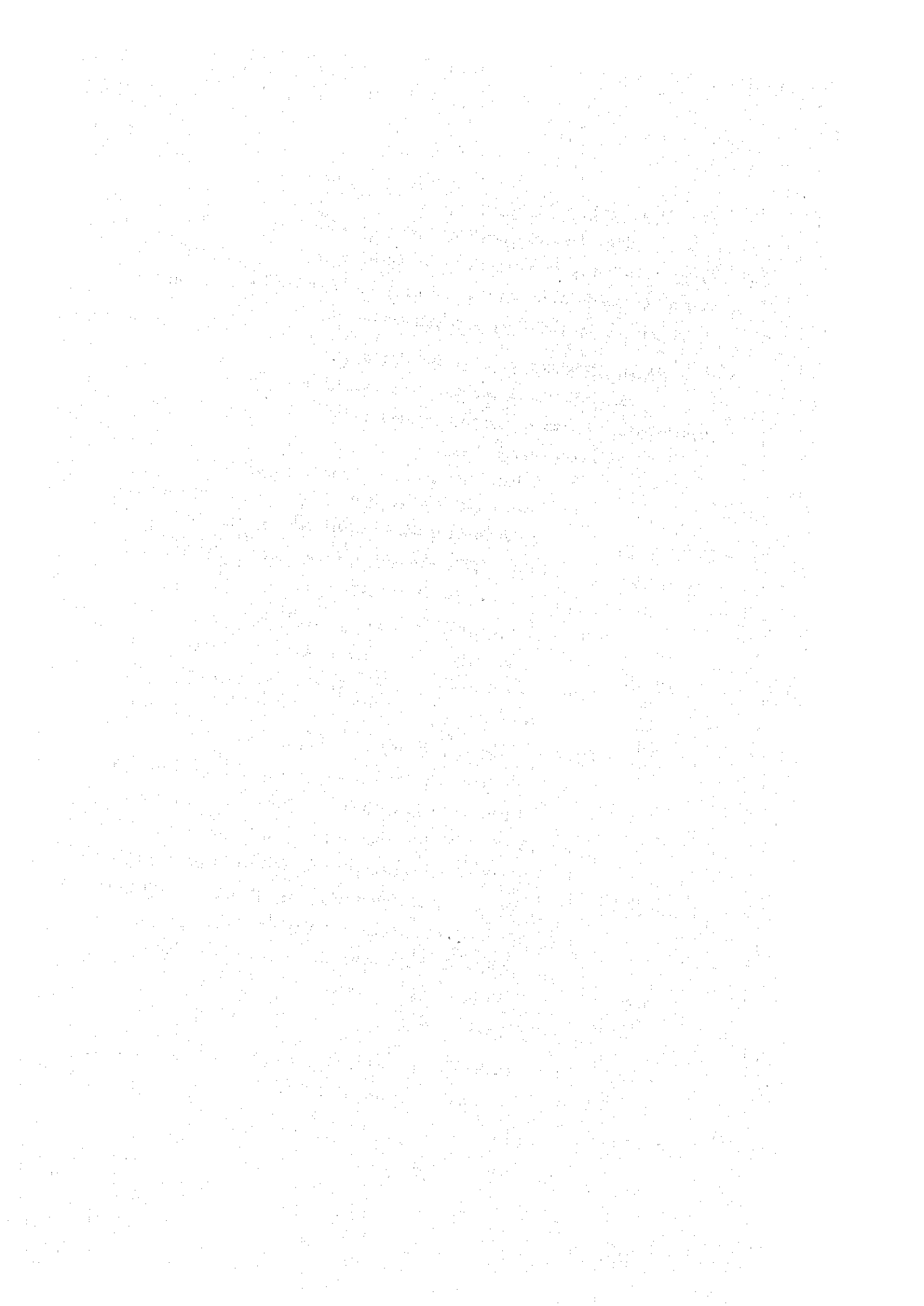
1-5. Removal of trees and the existing garage, and ground leveling of construction site by the end of November 1982.

2. Construction Works.

2-1. Electricity supply works with 6.6KV and 1000KVA

2-2. Telephone incoming works

Handwritten marks, possibly initials or a signature, located at the bottom right of the page.



- 2-3. Water supply works
- 2-4. Septic tank construction works
- 2-5. Outdoor works such as landscaping  
(Details will be discussed during the detailed design activities))

- 3. Installation of furniture and utensils
- 4. Arrangement to procure cement, aggregates and bricks (Details will be discussed during detailed design activities)
- 5. Arrangement of vehicles for transportation from Rangoon port to the Site.
- 6. IBD must pay all duties and taxes imposed on the equipments and materials imported from Japan.

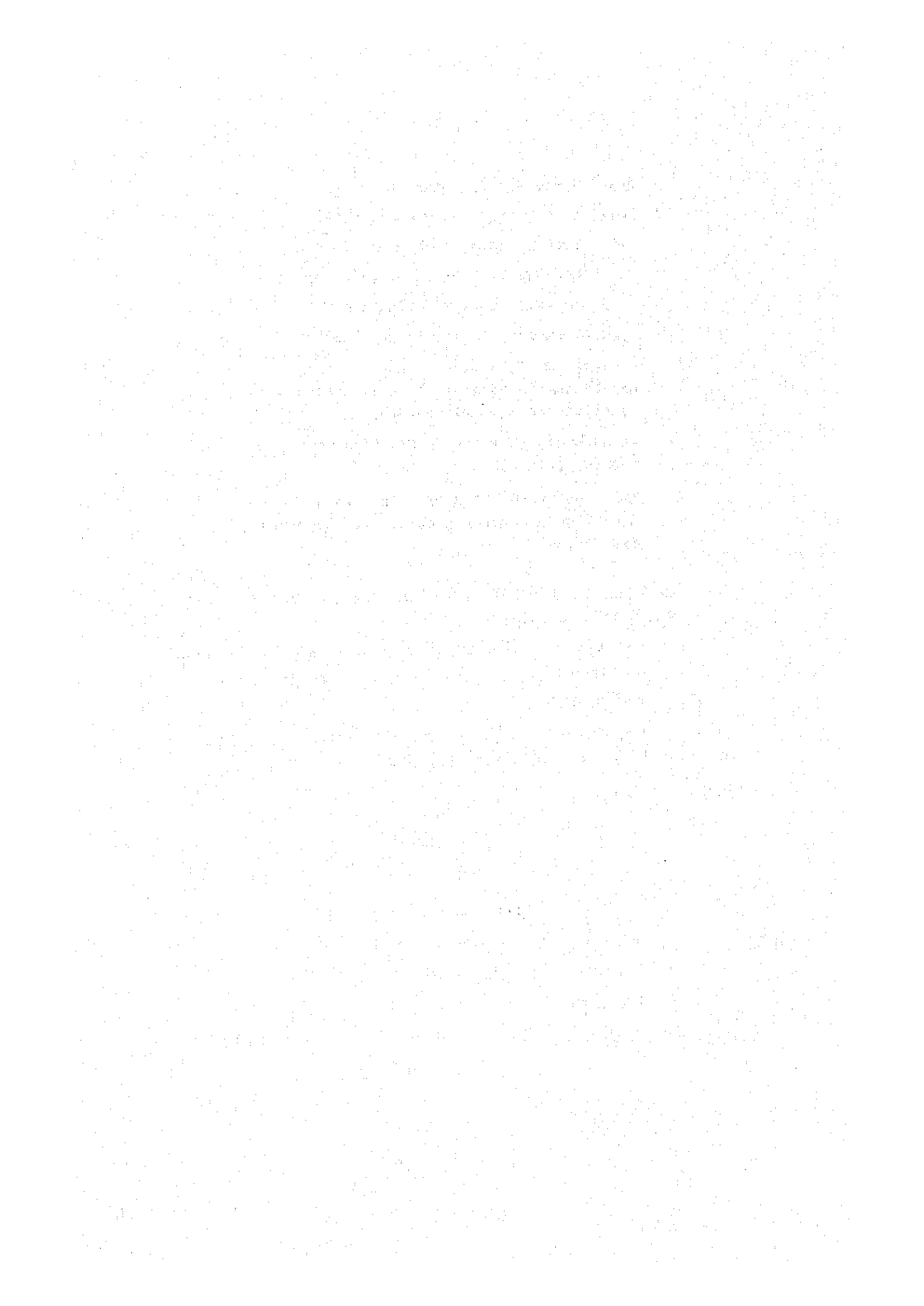
VI. Construction of Covered Way from the Existing Building to the New Building

Burmese side requested the construction of covered way to connect between existing and new buildings under Japanese Grant Aid.

Japanese side replied that the matter would be conveyed to the authorities concerned.

=====

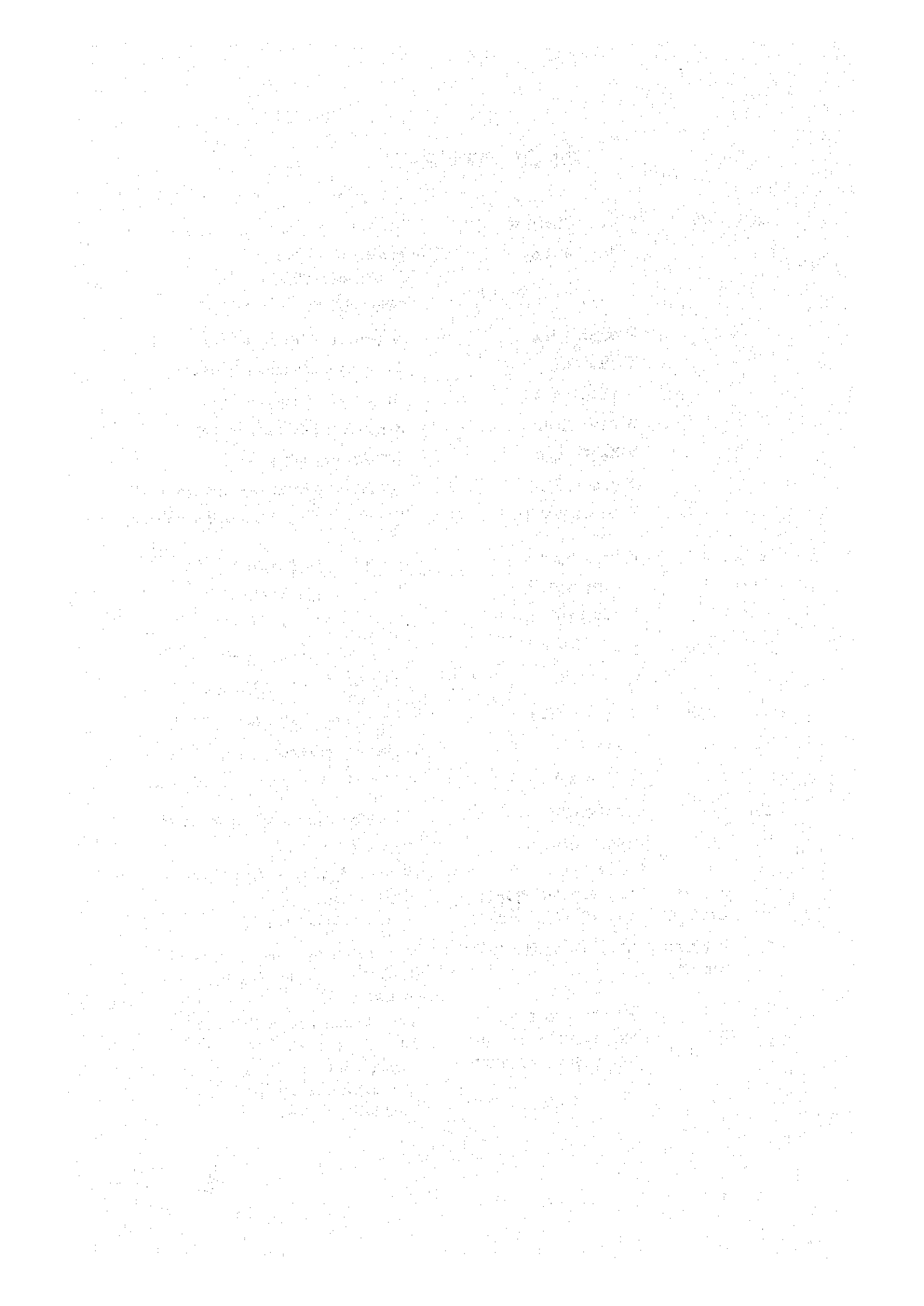
Handwritten marks, possibly initials or a signature.



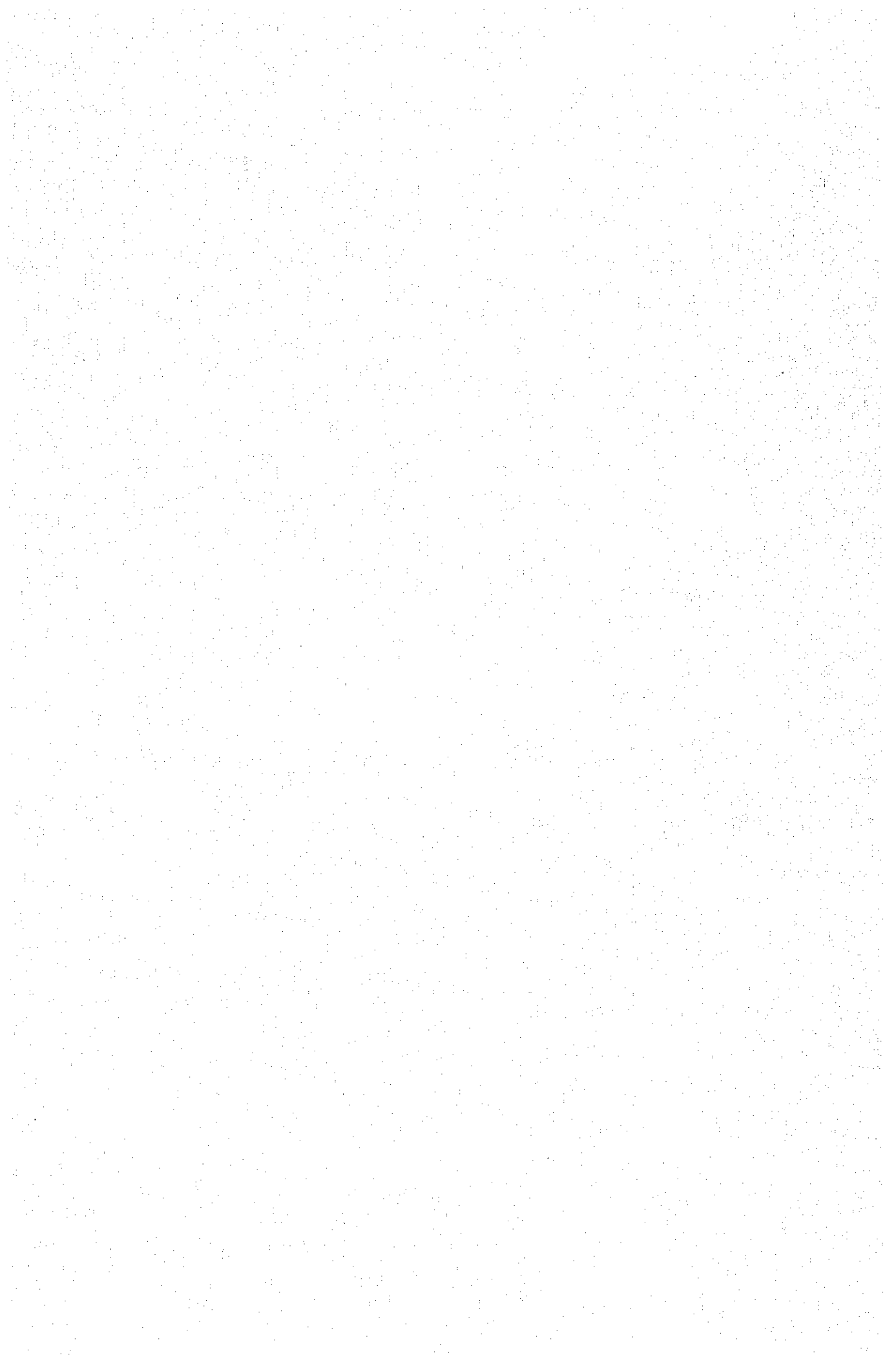
LIST OF PARTICIPANTS

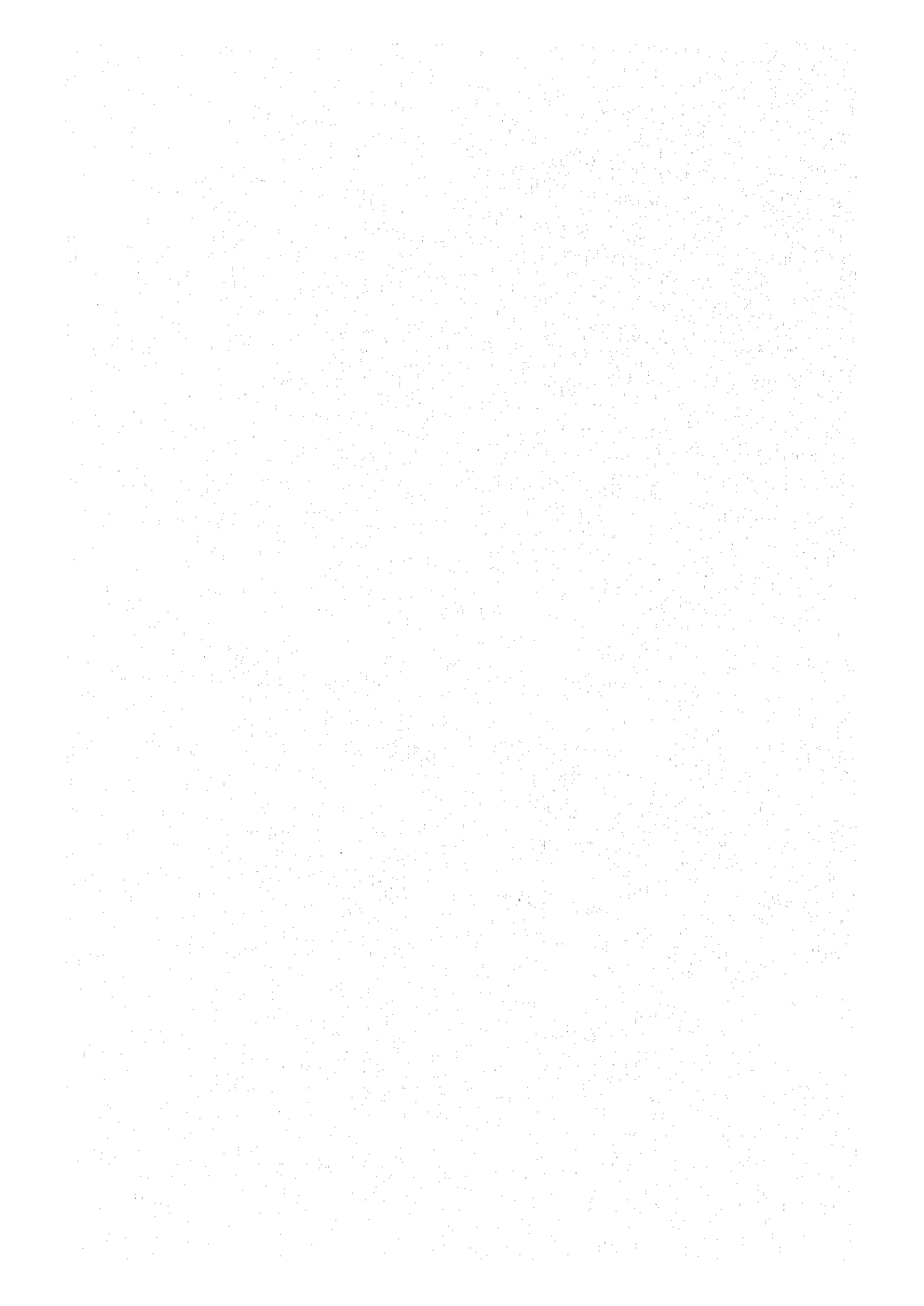
1.	IBD	U Tin Aung Tun	Director-General
		U Htin Aung	Planning-Officer Representative of the Ministry of Information.
		U Kyaw Mian	Director (Broadcasting)
		U Win Swe	Director (Administration)
		U Aung Khin	Director (Engineering)
		U Tin Aung	Additional Director (TV)
		U Ke-Ke-Gyi	Deputy Director (TV)
		U Nyi Win	Senior Supervisory Engineer(TV)
		U Mg Mg Sint	Deputy Director(Administration)
2.	G.O	U Thaa Aye	Director of Engineer (Works)
		U Aung Myint	S.O.I (Architect)
		U Win Kyu	S.O.I (Q/S Research)
3.	EPC	U Ba Thee	Assistant Chief Engineer
		U Oha Myint	Executive Engineer
4.	FEED	U Myint Aung	Additional Director
5.	PTG	U Tha Tun	General Manager
		U Sein Win	Project Engineer(Long Distance)
6.	MFA	U Ba Thwin	Director, Economic Division
7.	HIO	Capt. Thaa Win	Project Engineer
		U Min Swe	Deputy Assistant Director
8.	JAPANESE EMBASSY	MR. HITOSHI HONDA	First Secretary
		MR. KEIICHI TAKEDA	Extra Chancellor
9.	MISSION MEMBERS	MR. KAZUHISA MATSUOKA	Deputy Chief, Basic Design Division, Grant Aid Department, J.I.O.A.
		MR. TOSHIO SATO	(TV emission facilities)NHK
		MR. AKIHISA ASANO	(Architectural Planning)NHK
		MR. HIROMI KISHIMOTO	(Architectural Design) Ikegawa Architects and Engineers, Inc.

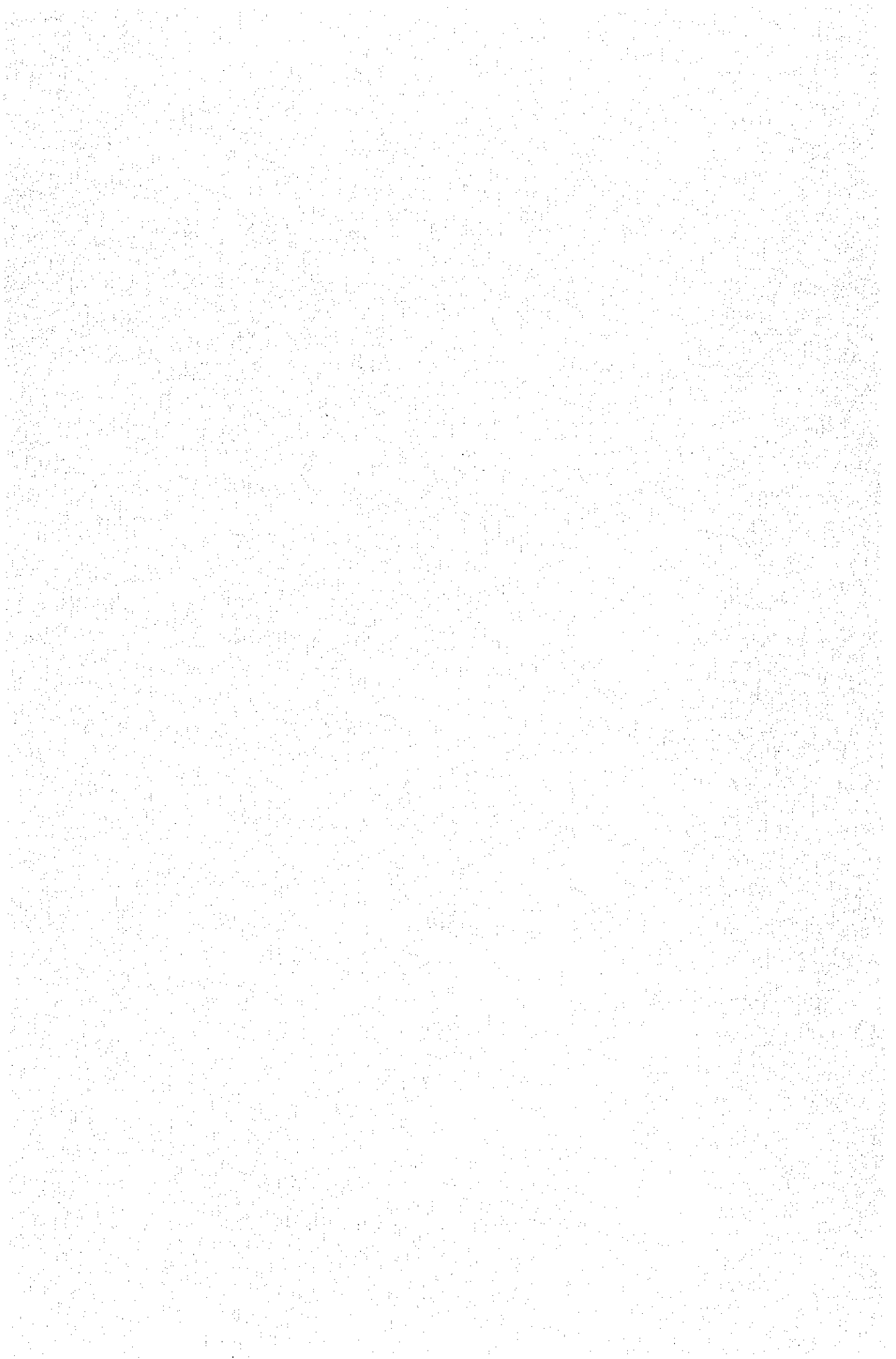
✱ 7











JICA