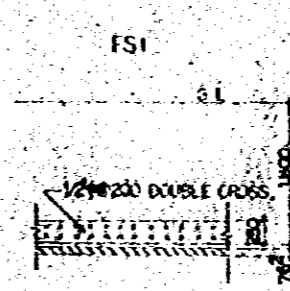
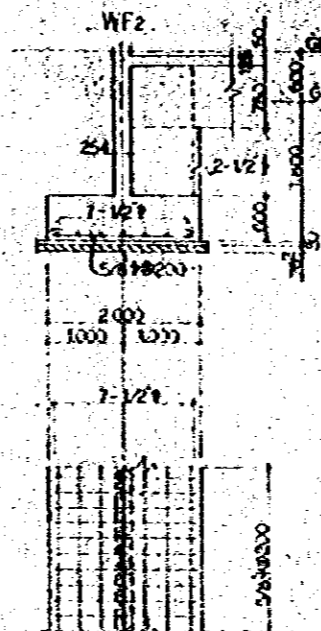
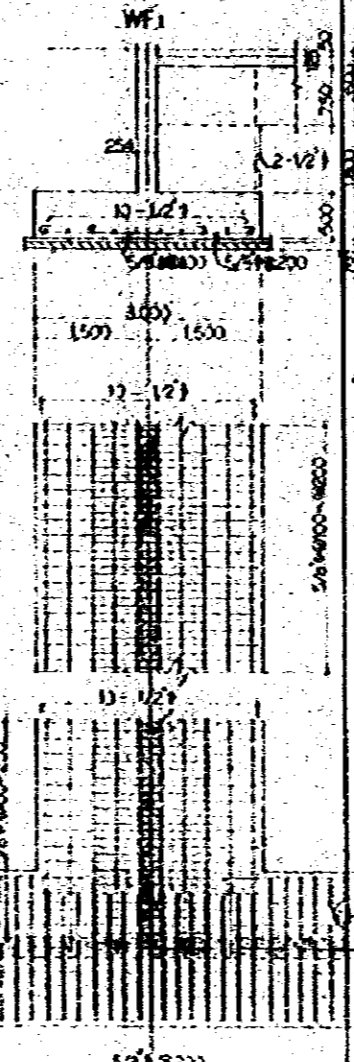
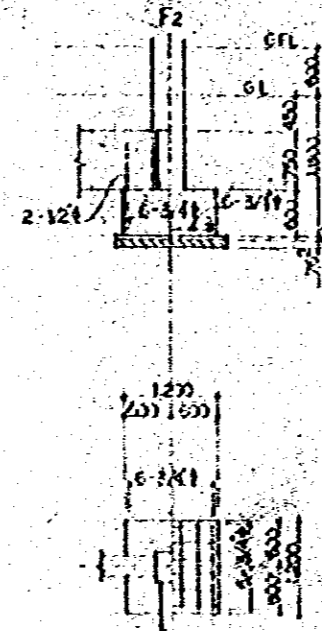
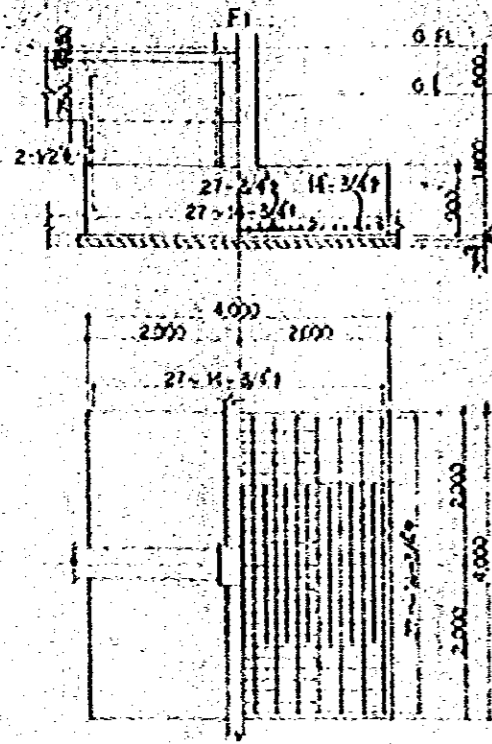


FOUNDATION SCHEDULE SCALE 1:50



COLUMN SCHEDULE SCALE 1:50

MARK	C1	C2
SECTION		
MARK	A-VI	B-VI

COLUMN SCHEDULE (UNLESS OTHERWISE NOTED)

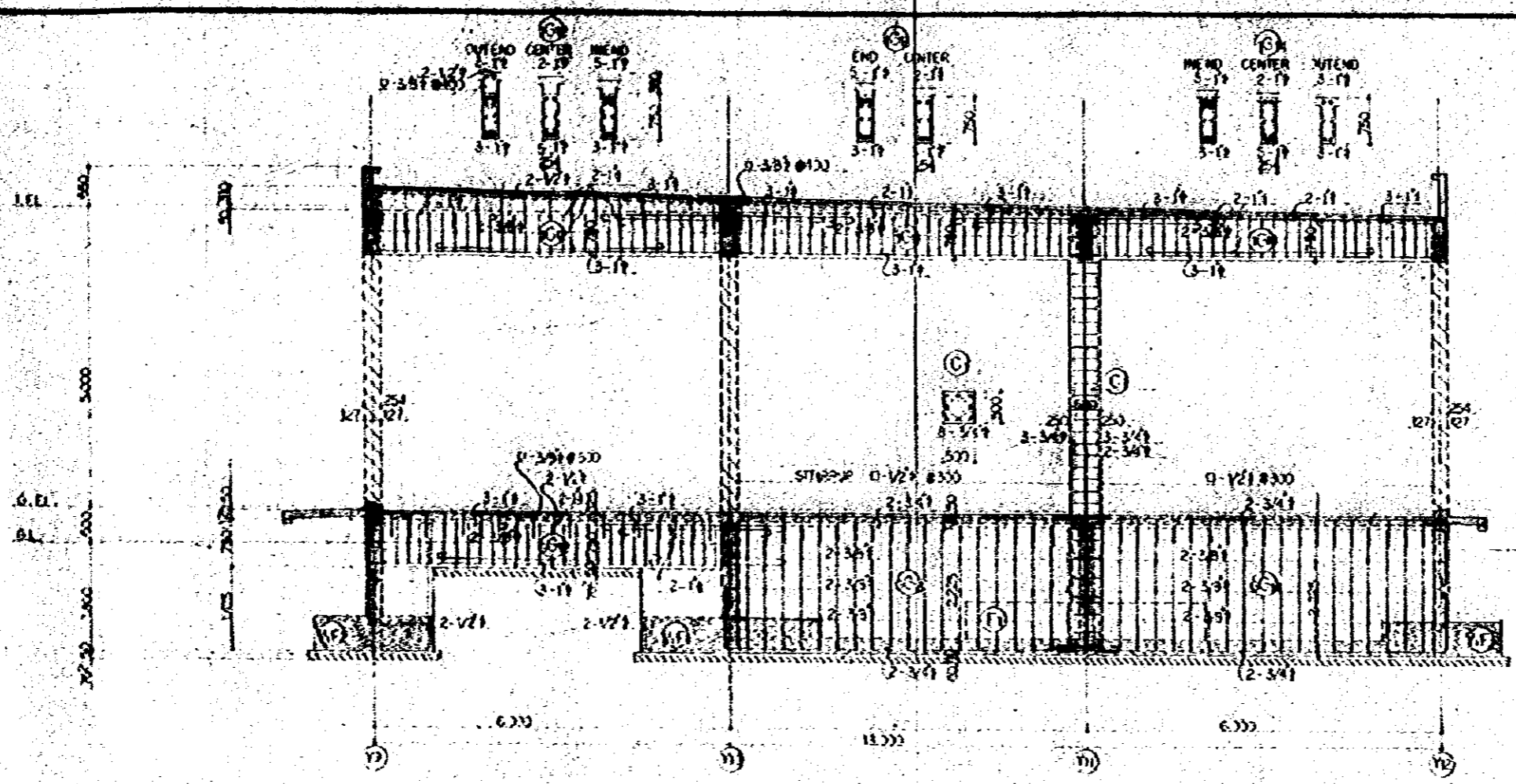
MARK	GENERAL	PANEL JAIL
AUG. MARK	0-3 1/2 @ 200	0-3 1/2 @ 200

GIRDER SCHEDULE SCALE 1:50

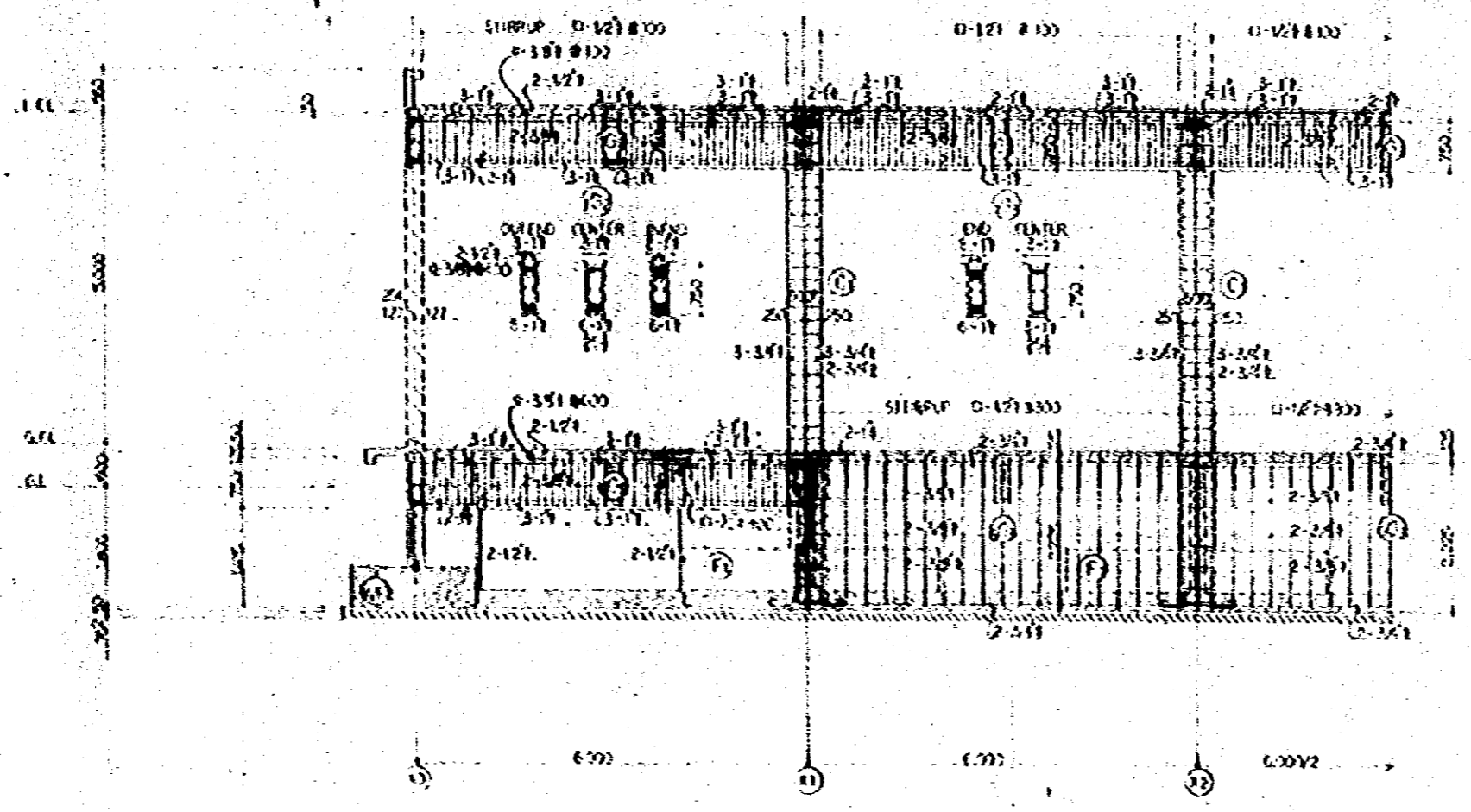
SECTION	UNLESS OTHERWISE NOTED	G11			G2. 1A			G3		G4			G5			G6			G7	
		OUT END	CENTER	IN END	END	CENTER	IN END	OUT END	CENTER	IN END	OUT END	CENTER	IN END	OUT END	CENTER	IN END	OUT END	CENTER	IN END	
SECTION																				
TOP FLANGE	2-3/4" x 1/4"	2-3/4" x 1/4"	2-3/4" x 1/4"	2-3/4" x 1/4"	2-3/4" x 1/4"	2-3/4" x 1/4"	2-3/4" x 1/4"	2-3/4" x 1/4"	2-3/4" x 1/4"	2-3/4" x 1/4"	2-3/4" x 1/4"	2-3/4" x 1/4"	2-3/4" x 1/4"	2-3/4" x 1/4"	2-3/4" x 1/4"	2-3/4" x 1/4"	2-3/4" x 1/4"	2-3/4" x 1/4"	2-3/4" x 1/4"	
WEBS	2-3/4" x 1/4"	2-3/4" x 1/4"	2-3/4" x 1/4"	2-3/4" x 1/4"	2-3/4" x 1/4"	2-3/4" x 1/4"	2-3/4" x 1/4"	2-3/4" x 1/4"	2-3/4" x 1/4"	2-3/4" x 1/4"	2-3/4" x 1/4"	2-3/4" x 1/4"	2-3/4" x 1/4"	2-3/4" x 1/4"	2-3/4" x 1/4"	2-3/4" x 1/4"	2-3/4" x 1/4"	2-3/4" x 1/4"	2-3/4" x 1/4"	
BOTTOM FLANGE	2-3/4" x 1/4"	2-3/4" x 1/4"	2-3/4" x 1/4"	2-3/4" x 1/4"	2-3/4" x 1/4"	2-3/4" x 1/4"	2-3/4" x 1/4"	2-3/4" x 1/4"	2-3/4" x 1/4"	2-3/4" x 1/4"	2-3/4" x 1/4"	2-3/4" x 1/4"	2-3/4" x 1/4"	2-3/4" x 1/4"	2-3/4" x 1/4"	2-3/4" x 1/4"	2-3/4" x 1/4"	2-3/4" x 1/4"	2-3/4" x 1/4"	

SUB BEAM CANTILEVER SCHEDULE SCALE 1:50

SECTION	UNLESS OTHERWISE NOTED	B1			B2		B3			B4		C1		C2	
		OUT END	CENTER	IN END	END	CENTER	OUT END	CENTER	IN END	END	CENTER	OUT END	IN END	OUT END	
SECTION															
TOP FLANGE	2-3/4" x 1/4"	2-3/4" x 1/4"	2-3/4" x 1/4"	2-3/4" x 1/4"	2-3/4" x 1/4"	2-3/4" x 1/4"	2-3/4" x 1/4"	2-3/4" x 1/4"	2-3/4" x 1/4"	2-3/4" x 1/4"	2-3/4" x 1/4"	2-3/4" x 1/4"	2-3/4" x 1/4"	2-3/4" x 1/4"	
WEBS	2-3/4" x 1/4"	2-3/4" x 1/4"	2-3/4" x 1/4"	2-3/4" x 1/4"	2-3/4" x 1/4"	2-3/4" x 1/4"	2-3/4" x 1/4"	2-3/4" x 1/4"	2-3/4" x 1/4"	2-3/4" x 1/4"	2-3/4" x 1/4"	2-3/4" x 1/4"	2-3/4" x 1/4"	2-3/4" x 1/4"	
BOTTOM FLANGE	2-3/4" x 1/4"	2-3/4" x 1/4"	2-3/4" x 1/4"	2-3/4" x 1/4"	2-3/4" x 1/4"	2-3/4" x 1/4"	2-3/4" x 1/4"	2-3/4" x 1/4"	2-3/4" x 1/4"	2-3/4" x 1/4"	2-3/4" x 1/4"	2-3/4" x 1/4"	2-3/4" x 1/4"	2-3/4" x 1/4"	



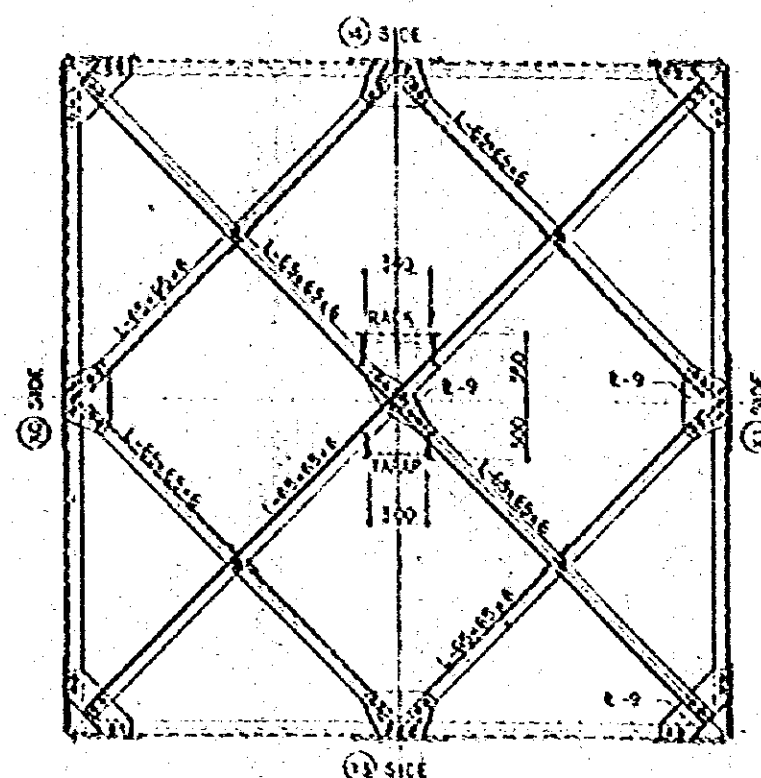
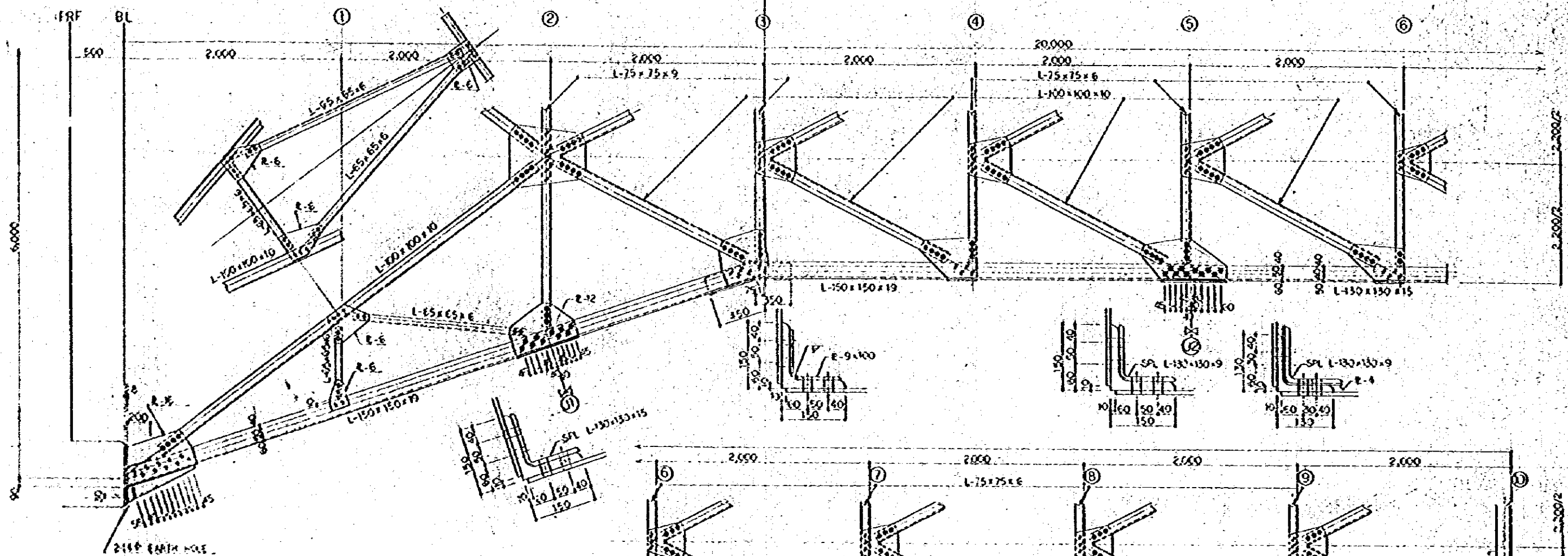
(2) FRAMING DETAIL S 1:50



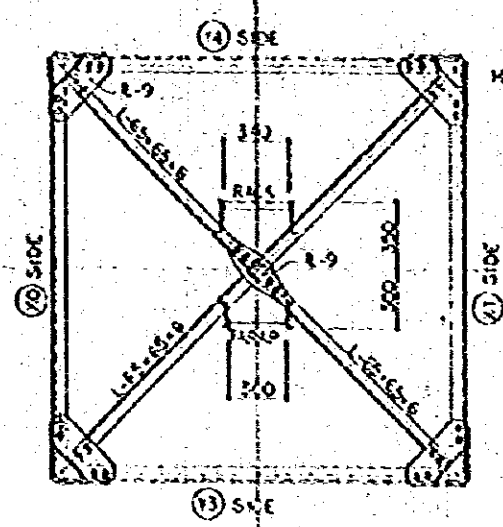
(3) FRAMING DETAIL S 1:50

UNLESS OTHERWISE NOTED.

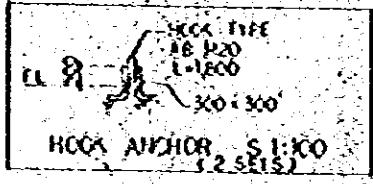
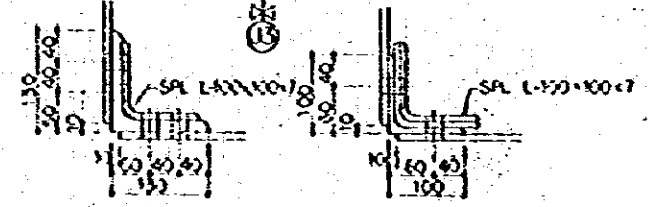
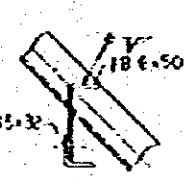
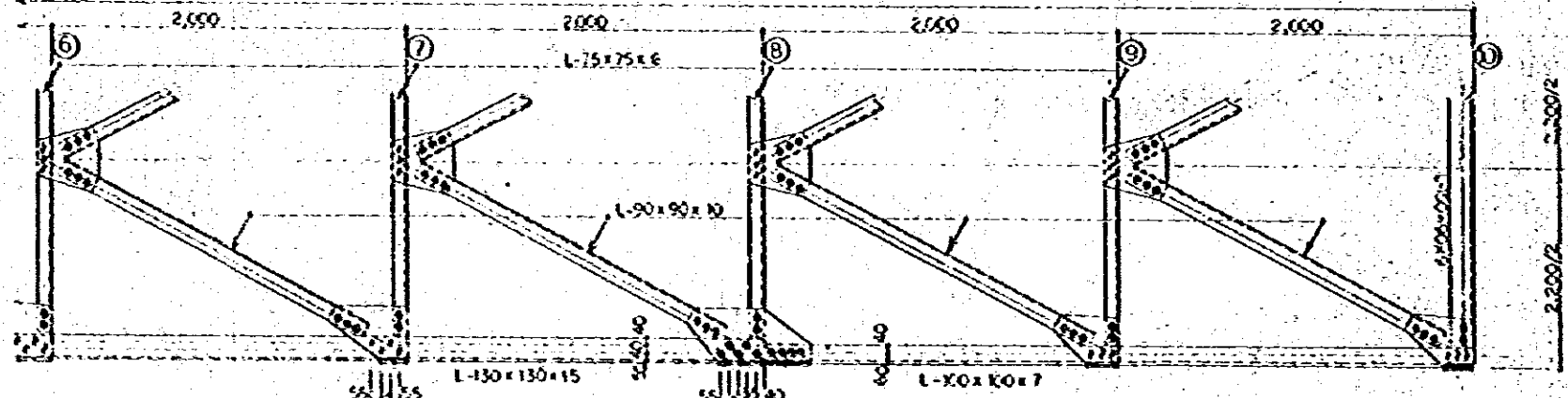
GENERAL:	STIRRUP	Ø-3Ø1Ø300
	SPWEL	Ø-3Ø1Ø300
COLUMN:	GENERAL	PANEL ZONE
	HOOP	Ø-3Ø1Ø200
	ALL HOOP	Ø-2Ø1Ø300



SECTION-2 S 1:20



SECTION-5-10 S 1:20



GENERAL NOTE (UNLESS OTHERWISE NOTED)

1 SURFACE TREATMENT: ZN PLATING

2 VERTICAL R. --- R-9 HORIZONTAL R. --- R-6

3 ANGLE GAGE LINE

L 150	--- 75	L 125	--- 75
L 100	--- 60	L 90	--- 50
L 75	--- 40	L 65	--- 35
L 50	--- 30		

NO.	FINISH	END CLEARANCE
1	M16	55
2	M20	65
3	M16	35
4	M20	45

NO.	CLASS	SIZE	NO.	CLASS	SIZE
1	M16	55	1	M16	35
2	M20	65	2	M20	45
3	M16	35	3	M16	35
4	M20	45	4	M20	45
5	M16	35	5	M16	35
6	M20	45	6	M20	45
7	M16	35	7	M16	35
8	M20	45	8	M20	45

6 EXPT. N.T. SHALL BE DOUBLE N.TS.

STEEL STRUCTURE STANDARD

GENERAL NOTE

MATERIAL
STEEL 88 (HS 6301) PLATE STEEL E
SAFE STEEL HLE
SHEET STEEL CHR

88 (HS 6301) STEEL PIPE
SAFE STEEL HLE
SOP 2 (HS 6301) PLATE SOP

COUPLER HIGH TENSION BOLT (HS 6110) TYPE 2-A
(USUAL CHECK POSSIBLE TYPE)
BOLT SS 41 (HS 6301) DOUBLE NUTS
NUT OR BOLT SS 41 (HS 6301) DOUBLE NUTS
AS STAINCORATED GALV.

WELDING STEEL CHECK 540
PIPE PIPE
TURN BANGLE (US A 5040 TYPE 1)
WIRE MESH (US G 3551)

CHANGE AND REVISION OF DESIGN
BY WORKING MACHINE OR MATERIAL HANDLING AND SUPPORTING
CONSTRUCTION, SOME MEMBER MAY BE REVISED.

STANDARD SPECIFICATION
UNLESS NOTED IN DRAWING SPEC. FABRICATING, RIVETING, BOLTING,
WELDING, PAINTING, ALL EFFECTS OF STEEL SETTING OF ANCHOR BOLTS
ARE ADDITIONAL TO MASS OF SPACE OR POST-HEARD FOR EFFECTS
ARE INCLUDED FOR CONTRACT.

WORKING DRAWING APPROVAL OF SUPERVISOR, LOCAL OFFICE IS
PERMITTED.)
1. PREVIOUS TO SOME CONSTRUCTION SPACE, BUILDER SHALL OFFER DRAWING FOR
APPROVAL.

A. PROGRESS SCHEDULE
B. FABRICATING (WITH REFERENCE TO DRAWING)
C. MATERIAL ORDERING AND PROGRESS SCHEDULE
D. CERTIFICATES OF WELDERS INCLUDING OUT OF CRYER.

2. AFTER SOME CONSTRUCTION SPACE, BUILDER SHALL OFFER REPORT FOR
APPROVAL.
L. STEEL TENSION P. STEEL BENDING
Q. STEEL IMPACT R. ACCOMPLISHED PART TEST REPORT/CHECK REPORT
I. RIVET MATERIAL J. BOLT AND NUT MATERIAL K. WELDING TEST REPORT BY SUPERVISOR HAVE.

**1. HIGH TENSION BOLT AND OTHER SIMILAR
WELDED JOINTS OF STEEL**

A	B		C		D		E		F	
	1	2	3	4	5	6	7	8	9	10
45	22	10	12	15	18	22	28	35	45	55
45	20	10	12	15	18	22	28	35	45	55
57	30	15	18	22	28	35	45	55	70	85
65	35	18	22	28	35	45	55	70	85	105
75	45	25	30	38	48	60	75	95	120	150
85	55	30	38	48	60	75	95	120	150	185
100	65	35	45	55	70	90	115	145	185	235
125	85	45	55	70	90	115	145	185	235	295
150	105	55	70	90	115	145	185	235	295	375
175	135	70	90	115	145	185	235	295	375	475
200	165	85	110	140	180	230	290	370	470	595

1. E-50 CASE, 202AS
RIVETS & BOLT ARE USED
WITH SUPERVISOR'S APPROVAL.

A	B		C		D		E		F	
	1	2	3	4	5	6	7	8	9	10
21	10	5	6	8	10	12	15	18	22	28
23	11	5	6	8	10	12	15	18	22	28
24	12	6	8	10	12	15	18	22	28	35
25	13	6	8	10	12	15	18	22	28	35
26	14	7	9	11	14	17	21	26	33	41
27	15	7	9	11	14	17	21	26	33	41
28	16	8	10	12	15	18	22	28	35	43
29	17	8	10	12	15	18	22	28	35	43
30	18	9	11	14	17	21	26	33	41	50
31	19	9	11	14	17	21	26	33	41	50
32	20	10	12	15	18	22	28	35	43	53
33	21	10	12	15	18	22	28	35	43	53
34	22	11	14	17	21	26	33	41	50	60
35	23	11	14	17	21	26	33	41	50	60
36	24	12	15	18	22	28	35	43	53	65
37	25	12	15	18	22	28	35	43	53	65
38	26	13	16	20	25	31	39	49	61	75
39	27	13	16	20	25	31	39	49	61	75
40	28	14	17	21	26	33	41	50	60	75
41	29	14	17	21	26	33	41	50	60	75
42	30	15	18	22	28	35	43	53	65	80
43	31	15	18	22	28	35	43	53	65	80
44	32	16	19	24	30	37	46	57	70	85
45	33	16	19	24	30	37	46	57	70	85
46	34	17	20	25	31	39	49	61	75	90
47	35	17	20	25	31	39	49	61	75	90
48	36	18	21	26	33	41	50	60	75	95
49	37	18	21	26	33	41	50	60	75	95
50	38	19	22	28	35	43	53	65	80	100
51	39	19	22	28	35	43	53	65	80	100
52	40	20	23	29	36	45	56	69	85	105
53	41	20	23	29	36	45	56	69	85	105
54	42	21	24	30	38	47	58	72	88	110
55	43	21	24	30	38	47	58	72	88	110
56	44	22	25	31	39	49	60	75	90	115
57	45	22	25	31	39	49	60	75	90	115
58	46	23	26	32	40	50	62	77	95	120
59	47	23	26	32	40	50	62	77	95	120
60	48	24	27	33	41	51	63	79	97	125
61	49	24	27	33	41	51	63	79	97	125
62	50	25	28	34	42	52	64	80	98	130
63	51	25	28	34	42	52	64	80	98	130
64	52	26	29	35	43	53	65	81	100	135
65	53	26	29	35	43	53	65	81	100	135
66	54	27	30	36	44	54	66	82	102	140
67	55	27	30	36	44	54	66	82	102	140
68	56	28	31	37	45	55	67	83	104	145
69	57	28	31	37	45	55	67	83	104	145
70	58	29	32	38	46	56	68	84	106	150
71	59	29	32	38	46	56	68	84	106	150
72	60	30	33	39	47	57	69	85	108	155
73	61	30	33	39	47	57	69	85	108	155
74	62	31	34	40	48	58	70	86	110	160
75	63	31	34	40	48	58	70	86	110	160
76	64	32	35	41	49	59	71	87	112	165
77	65	32	35	41	49	59	71	87	112	165
78	66	33	36	42	50	60	72	88	114	170
79	67	33	36	42	50	60	72	88	114	170
80	68	34	37	43	51	61	73	89	116	175
81	69	34	37	43	51	61	73	89	116	175
82	70	35	38	44	52	62	74	90	118	180
83	71	35	38	44	52	62	74	90	118	180
84	72	36	39	45	53	63	75	91	120	185
85	73	36	39	45	53	63	75	91	120	185
86	74	37	40	46	54	64	76	92	122	190
87	75	37	40	46	54	64	76	92	122	190
88	76	38	41	47	55	65	77	93	124	195
89	77	38	41	47	55	65	77	93	124	195
90	78	39	42	48	56	66	78	94	126	200
91	79	39	42	48	56	66	78	94	126	200
92	80	40	43	49	57	67	79	95	128	205
93	81	40	43	49	57	67	79	95	128	205
94	82	41	44	50	58	68	80	96	130	210
95	83	41	44	50	58	68	80	96	130	210
96	84	42	45	51	59	69	81	97	132	215
97	85	42	45	51	59	69	81	97	132	215
98	86	43	46	52	60	70	82	98	134	220
99	87	43	46	52	60	70	82	98	134	220
100	88	44	47	53	61	71	83	99	136	225
101	89	44	47	53	61	71	83	99	136	225
102	90	45	48	54	62	72	84	100	138	230
103	91	45	48	54	62	72	84	100	138	230
104	92	46	49	55	63	73	85	101	140	235
105	93	46	49	55	63	73	85	101	140	235
106	94	47	50	56	64	74	86	102	142	240
107	95	47	50	56	64	74	86	102	142	240
108	96	48	51	57	65	75	87	103	144	245
109	97	48	51	57	65	75	87	103	144	245
110	98	49	52	58	66	76	88	104	146	250
111	99	49	52	58	66	76	88	104	146	250
112	100	50	53	59	67	77	89	105	148	255
113	101	50	53	59	67	77	89	105	148	255
114	102	51	54	60	68	78	90	106	150	260
115	103	51	54	60	68	78	90	106	150	260
116	104	52	55	61	69	79	91	107	152	265
117	105	52	55	61	69	79	91	107	152	265
118	106	53	56	62	70	80	92	108	154	270
119	107	53	56	62	70	80	92	108	154	270
120	108	54	57	63	71	81	93	109	156	275
121	109	54	57	63	71	81	93	109	156	275
122	110	55	58	64	72	82	94	110	158	280
123	111	55	58	64	72	82	94	110	158	280

JICA