

GIRDER SCHEDULE (1) SCALE 1:50

SECTION	UNLESS OTHERWISE NOTED	G1			G2			G3			G4			G5(SA)				G6				G7			G8(A)		G9		
		1/25 END	CENTER	1/25 END	END	CENTER	END	1/25 END	CENTER	1/25 END	END	CENTER	END	1/25 END	CENTER	1/25 END	END	CENTER	1/25 END	END	CENTER	1/25 END	END	CENTER	1/25 END	END	CENTER	1/25 END	
PR SECTION																													
1 SECTION																													
2 SECTION																													
3 SECTION																													
4 SECTION																													

GIRDER SCHEDULE (2) SCALE 1:5

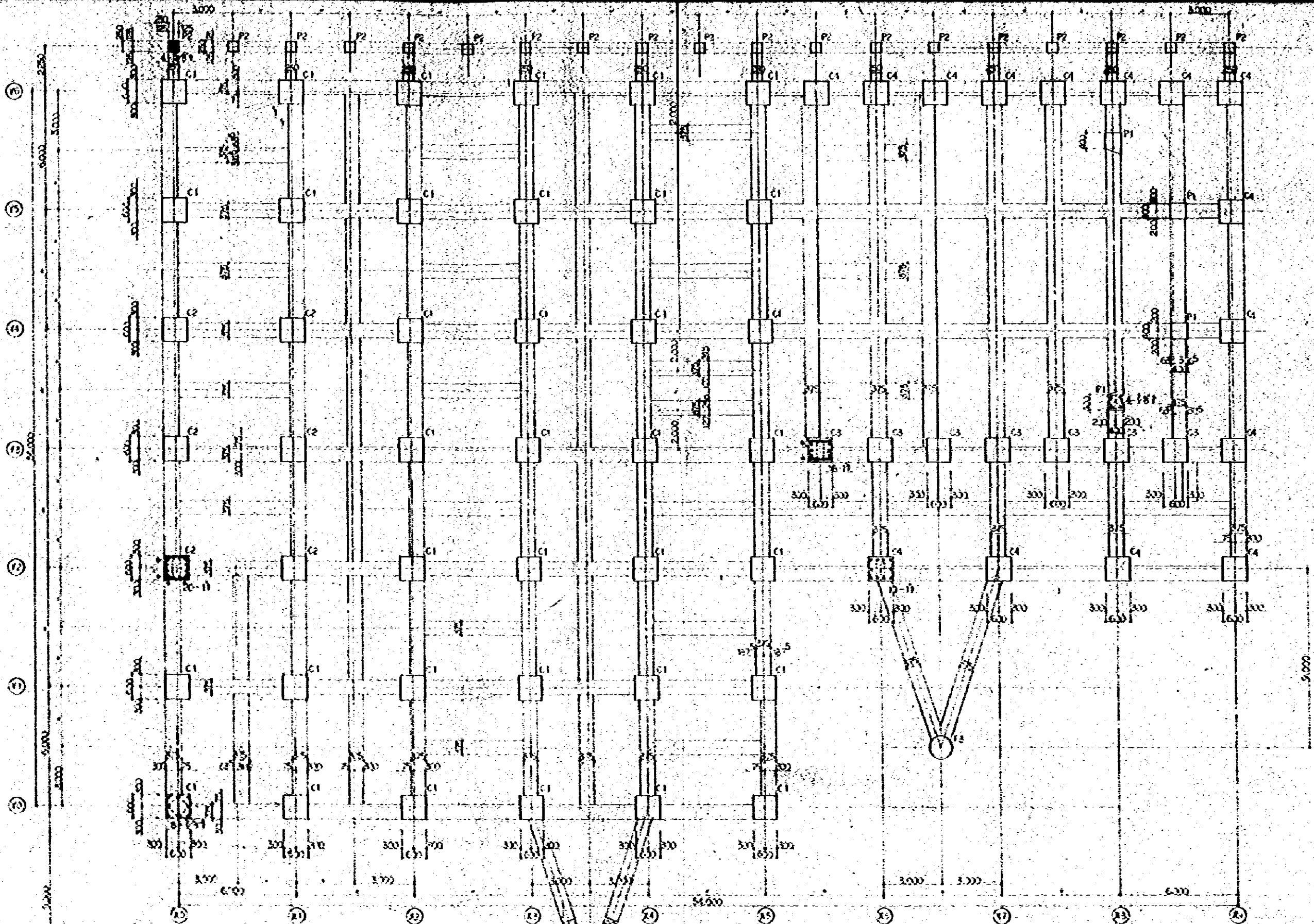
SECTION	UNLESS OTHER WISE NOTED.	G11			G12			G13			G14			G15			G16			G17			G18			G19											
		END	CENTER	END	END	CENTER	END	END	CENTER	END	END	CENTER	END	ENTER	END	END	END	CENTER	END	END	END	CENTER	END	END	END	CENTER	END	END	END	CENTER	END	END					
FR SECTION		X						X						X			X			X			X			X			X			X					
TOP BOTTOM E.P.C. SLIPER SPACE	2-114 0-1/2" 200 2-234 300				2-114 2-114						2-114 2-114																										
R SECTION														X									X									X					
TOP BOTTOM E.P.C. SLIPER SPACE	2-361 0-1/2" 200 2-354 300	1-7/8 3-7/8 5-7/8 2-7/8 2-7/8			2-7/8 2-7/8 2-7/8			1-3/4 2-1/4 3-1/4 2-1/4 2-1/4			2-1/4 2-1/4 2-1/4			6-1/4 5-1/4 5-1/4 6-1/4 6-1/4 6-1/4						3-7/8 2-7/8 3-7/8 3-7/8 2-7/8 2-7/8			7-1/4 3-1/4 7-1/4 3-1/4 4-1/4 4-1/4			4-3/4 4-3/4 4-3/4			2-3/4 2-3/4			2-3/4 2-3/4					
2 SECTION														X									X						X								
TOP BOTTOM E.P.C. SLIPER SPACE	2-361 0-1/2" 200 2-354 300	2-114 2-114 2-114			2-114 2-114			2-114 2-114 2-114			2-114 2-114 2-114						2-114 2-114 2-114			2-114 2-114 2-114						2-114 2-114 2-114			2-114 2-114 2-114								
1 SECTION																	X									X						X					
TOP BOTTOM E.P.C. SLIPER SPACE	2-361 0-1/2" 200 2-354 300	2-114 2-114 2-114			2-114 2-114			2-114 2-114 2-114			2-114 2-114 2-114			2-114 2-114 2-114			2-114 2-114 2-114			2-114 2-114 2-114			2-114 2-114 2-114			2-114 2-114 2-114			2-114 2-114 2-114								
G SECTION																										X						X					
TOP BOTTOM E.P.C. SLIPER SPACE	2-361 0-1/2" 200 2-354 300	2-114 2-114 2-114			2-114 2-114			2-114 2-114 2-114			2-114 2-114 2-114			2-114 2-114 2-114			2-114 2-114 2-114			2-114 2-114 2-114			2-114 2-114 2-114			2-114 2-114 2-114			2-114 2-114 2-114								

SUB BEAM SCHEDULE SCALE 1:50

SECTION	UNLESS OTHERWISE NOTED	B1			B2			B3			B4			B5			B6			B7			B8			B9	
		END	CENTER	OUTEND	END	CENTER	OUTEND	END	CENTER	OUTEND	END	CENTER	IN END	END	CENTER	OUTEND	END	CENTER	IN END	END	CENTER	OUTEND	END	CENTER	IN END	END	CENTER
SECTION 1	UNLESS OTHERWISE NOTED	2-11	2-11	2-11	3-11	2-11	3-11	3-11	2-11	3-11	3-11	2-11	3-11	3-11	2-11	3-11	3-11	2-11	3-11	3-11	2-11	3-11	3-11	2-11	3-11	3-11	2-11
SECTION 2	UNLESS OTHERWISE NOTED	2-11	2-11	2-11	3-11	2-11	3-11	3-11	2-11	3-11	3-11	2-11	3-11	3-11	2-11	3-11	3-11	2-11	3-11	3-11	2-11	3-11	3-11	2-11	3-11	3-11	2-11
SECTION 3	UNLESS OTHERWISE NOTED	2-11	2-11	2-11	3-11	2-11	3-11	3-11	2-11	3-11	3-11	2-11	3-11	3-11	2-11	3-11	3-11	2-11	3-11	3-11	2-11	3-11	3-11	2-11	3-11	3-11	2-11

CANTILEVER SCHEDULE SCALE 1:50

SECTION	UNLESS OTHERWISE NOTED	C01		C02		C03		C04		C05		C06		C07		C08	
		END	CENTER	END	CENTER	END	CENTER	END	CENTER	END	CENTER	END	CENTER	END	CENTER	END	CENTER
SECTION 1	UNLESS OTHERWISE NOTED	2-11	2-11	3-11	2-11	3-11	2-11	3-11	2-11	3-11	2-11	3-11	2-11	3-11	2-11	3-11	2-11
SECTION 2	UNLESS OTHERWISE NOTED	2-11	2-11	3-11	2-11	3-11	2-11	3-11	2-11	3-11	2-11	3-11	2-11	3-11	2-11	3-11	2-11



OF COLUMN BOTTOM SCHEDULE

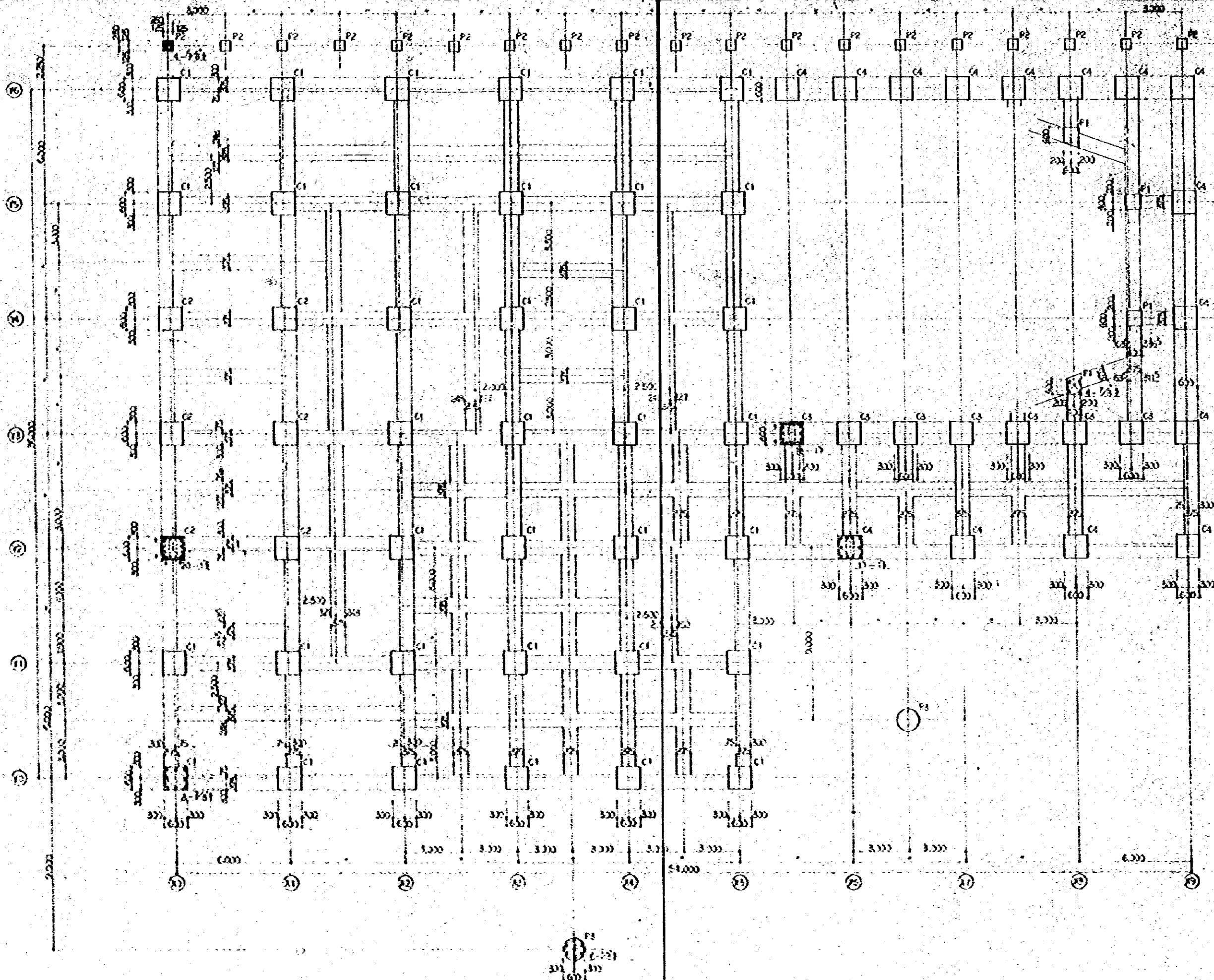
GENERAL NOTE OF COLUMN SCHEDULE.

NO. 1	NO. 2	NO. 3
1000	1000	1000
1000	1000	1000

* CLEARANCE 40.

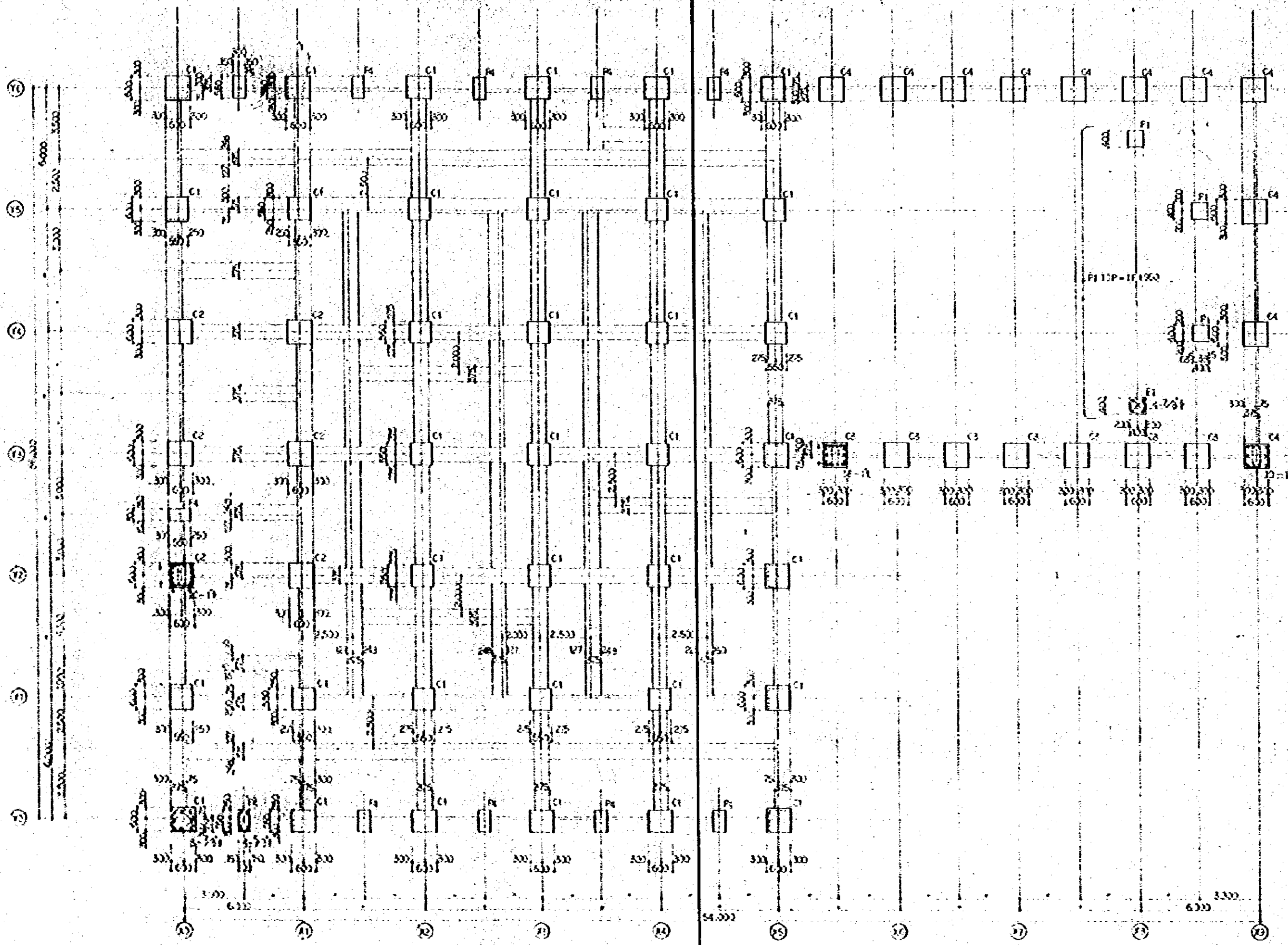
S. 1:50

NATIONAL BROADCASTING BOARD OF THE PHILIPPINES	5-01-11
COLUMN SCHEDULE (1)	1-50
FEB 1951	



OF COLUMN(S) SCHEDULE S. 1:50

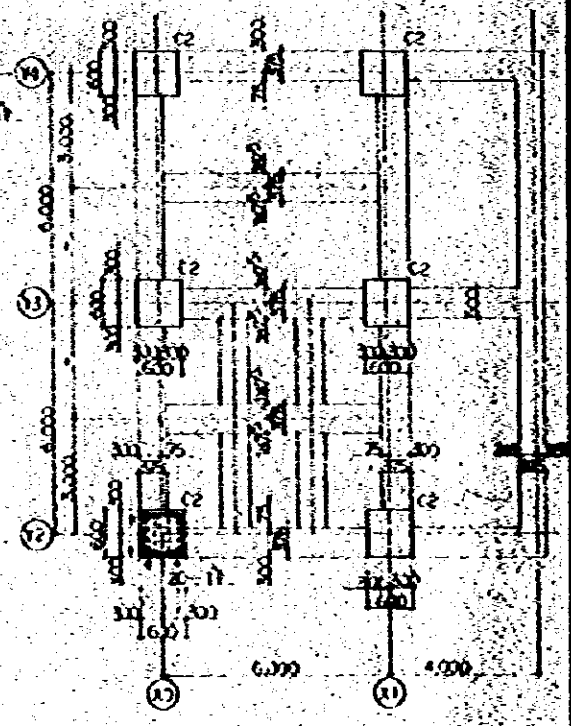
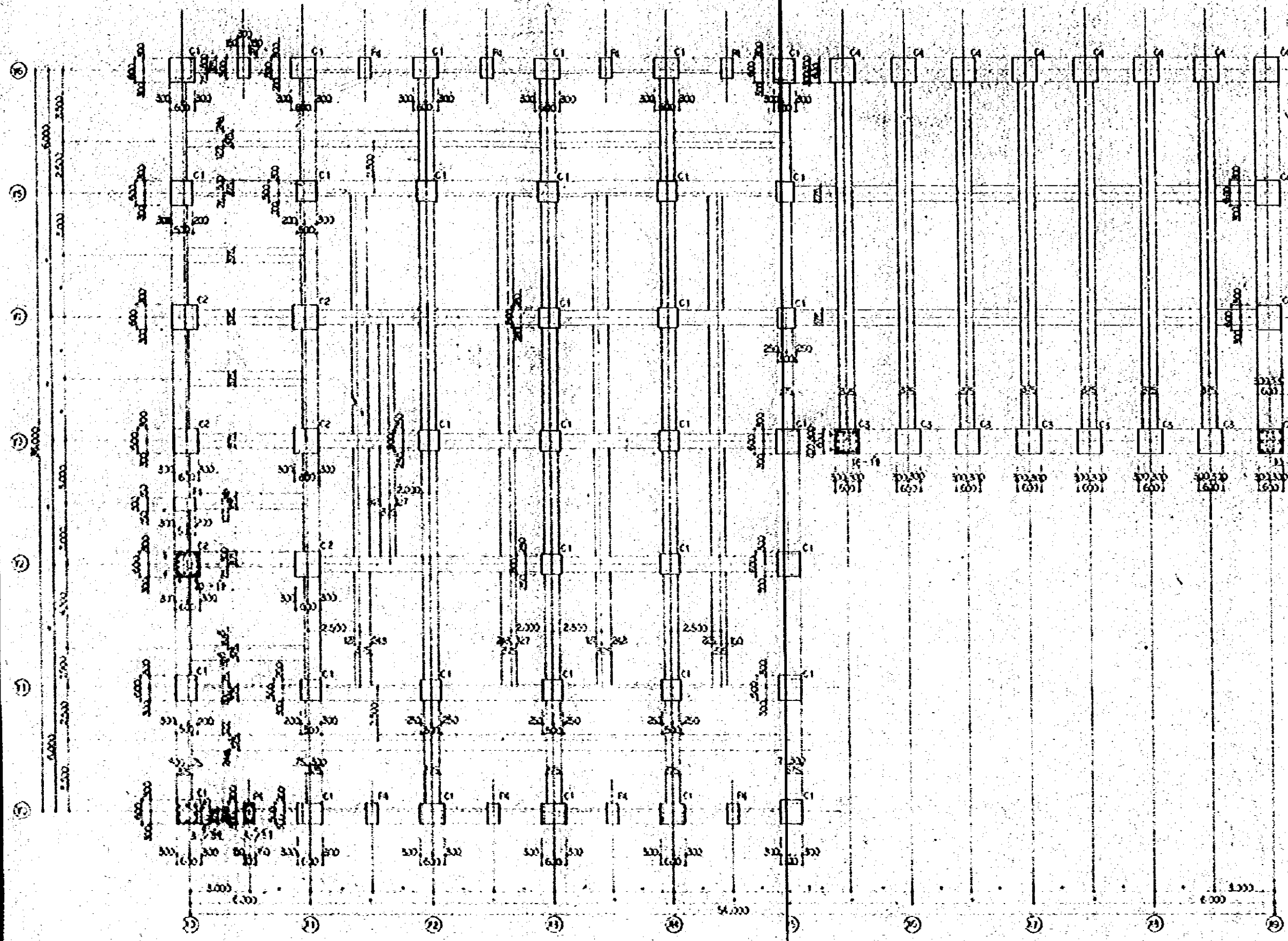
NATIONAL BROADCASTING HOUSE OF ROAD DEVELOPMENT		1-41-18
COLUMN SCHEDULE (2)		1:50
Drawn by <i>[Signature]</i>	Checked by <i>[Signature]</i>	H.E.
J.P. HAN ENGINEERING CONSULTANTS CO., LTD.		



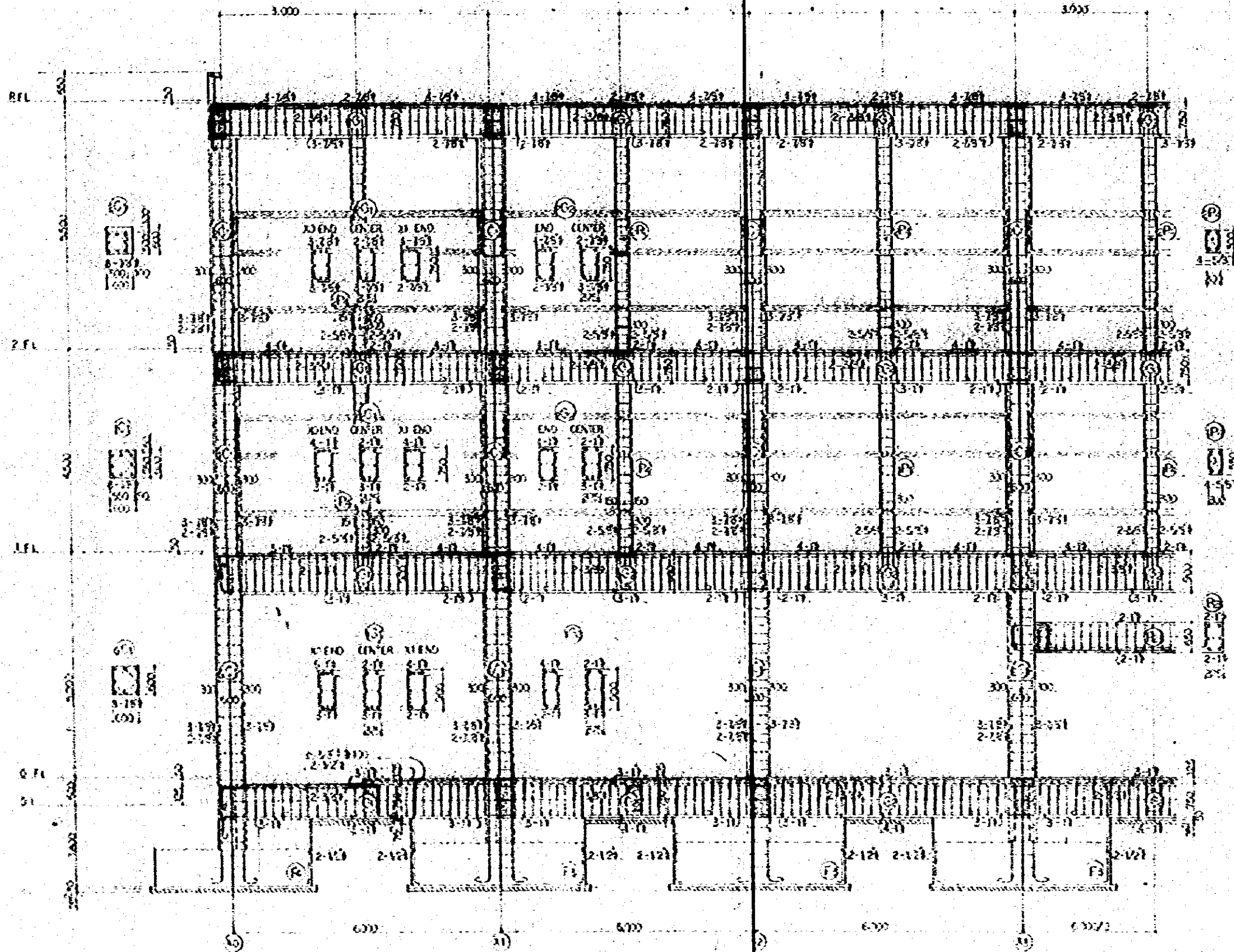
1F COLUMN SCHEDULE

S 1:50

NATIONAL BROADCASTING HOUSE OF RADIO BANGLADESH	3-01-13
COLUMN SCHEDULE (13)	1:50
DATE: FEB 68	BY: [Signature]
J.E.C. JAPAN ENGINEERING CONSULTANTS CO., LTD.	



NATIONAL BROADCASTING HOUSE OF SAPO BUILDING		5-20-58
COLUMN SCHEDULE (41)		1:50
Designed by	Checked by	FIG. 11
SEIJI JAPAN ENGINEERING CONSULTANTS CO., LTD.		



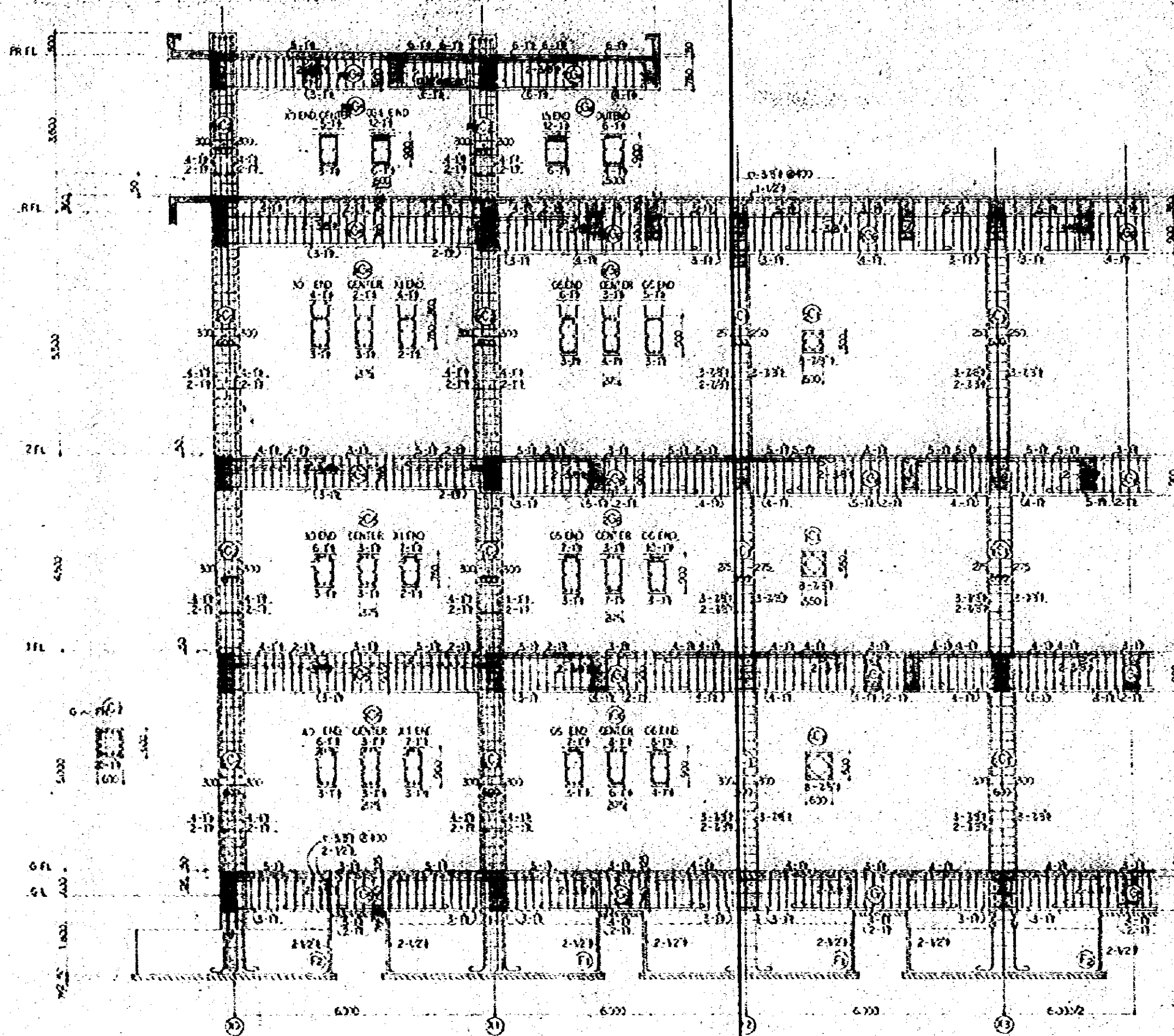
① LINE DETAIL

SCALE 1:50

UNLESS OTHERWISE NOTED.

COL. X 10'-1"	GENERAL	FR. 23E.
HOCP	O-351 8200	O-351 8300
A.X. HOCP	O-X-351 8300	
C.P. SLAB REIN.		
STAIR	O-351 8200	
SPACER	O-351 8300	

NATIONAL BROADCASTING HOUSE OF BIRMINGHAM	3-21-21
FRAME DETAIL (1)	1:50
J. S. JOHNSON ENGINEERING CONSULTANTS, INC.	

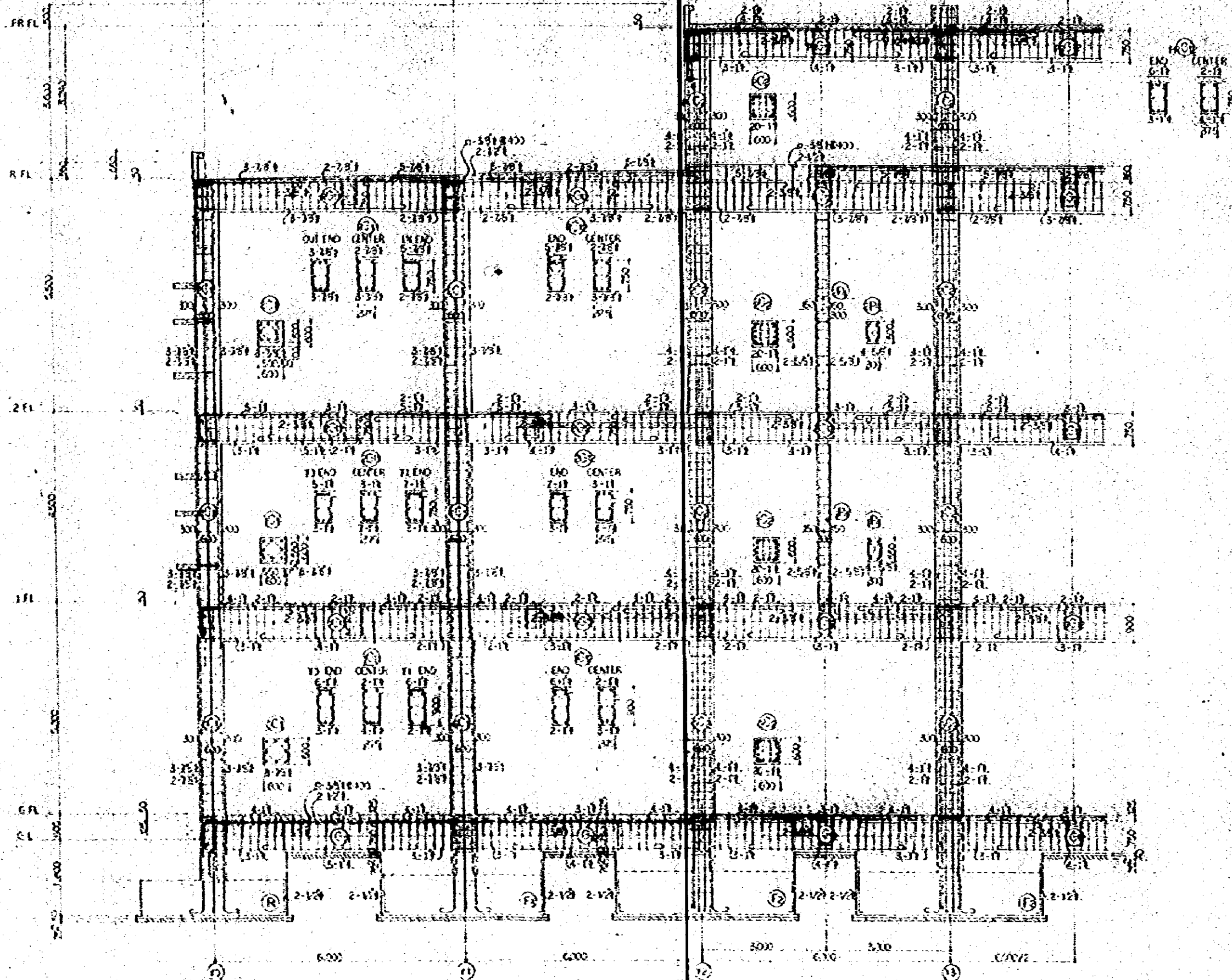


⑬ LINE DETAIL SCALE 1:50

UNLESS OTHERWISE NOTED.

COLUMN	GENERAL	PANEL JOINT
MOCP	U-351 0400	U-251 0200
AIR MOCP	U-351 0400	
SPICER		
STAMP	U-351 0400	
SPICER	U-351 0400	

NATIONAL BROADCASTING BOARD OF RADIO EQUIPMENT	8-01-22
FRAME DETAIL (2)	1:50
FEB 1933	
JAPANESE ENGINEERING CONSULTANTS CO., LTD.	

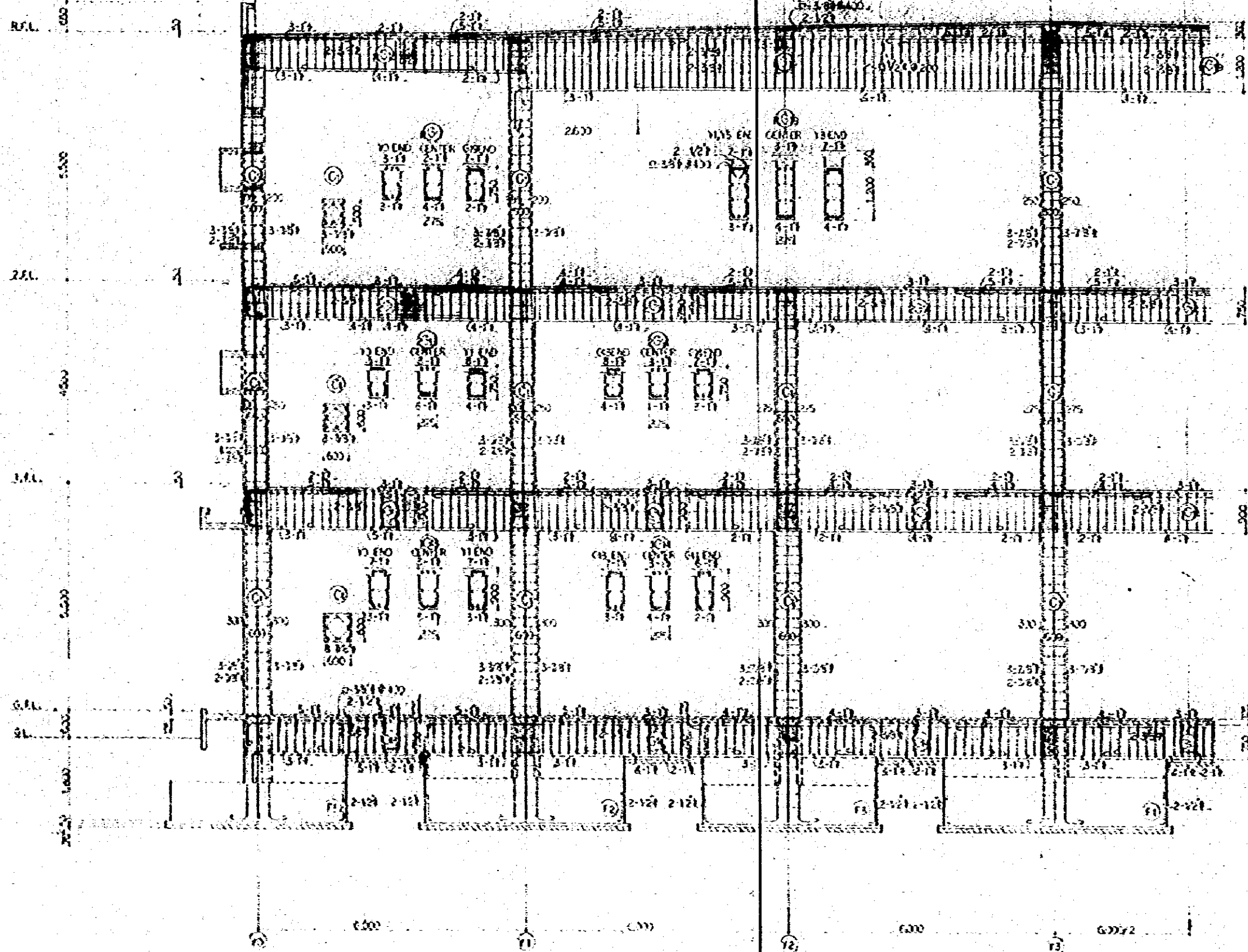


LINE DETAIL SCALE 1:50

UNLESS OTHERWISE NOTED.

GROUP	GENERAL	FACE TYPE
COLUMN	D-3518200	D-3518300
HOIST	D-3518200	D-3518300
AUX. HOIST	D-3518200	D-3518300
GROUP		
STRUT	H-3518200	
SPACER	F-3518300	


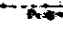
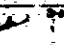
NATIONAL BROADCASTING NUMBER OF RADIO BROADCASTING	3-11-23
FRAME DETAIL (3)	1:50
DATE	FEB 52
JAPAN ENGINEERING CONSULTANTS CO., LTD.	

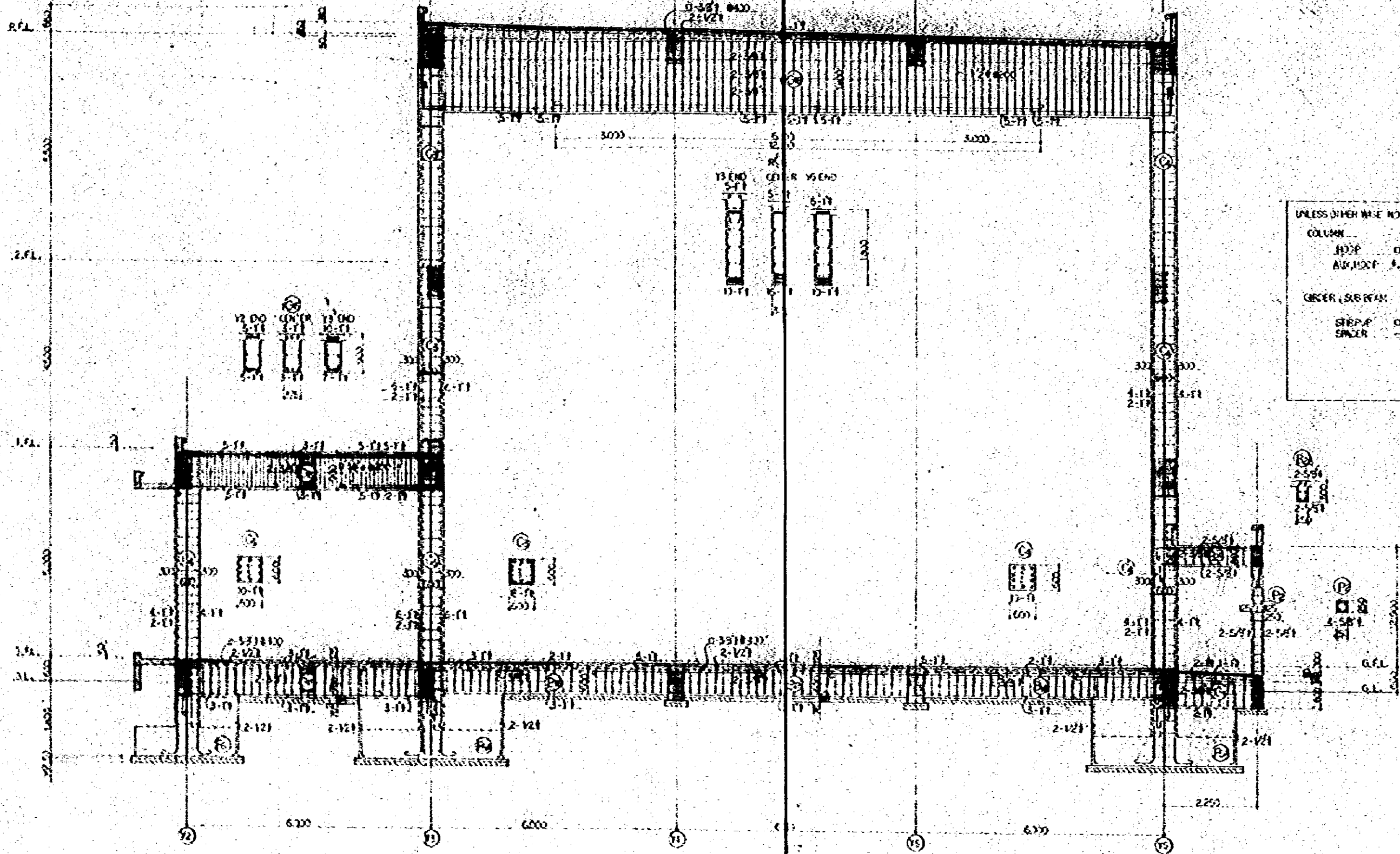


② LINE DETAIL

SCALE 1:50

UNLESS OTHERWISE NOTED.		
COLUMN	GENERAL	PIPE SIZE
HOOP	Ø 351.800	Ø 351.800
AIR HOOP	Ø 351.800	
CAPSCREW		
STOP P.	Ø 351.800	
SPACER	Ø 351.800	

NATIONAL BROADCASTING HOUSE OF RADIO EQUIPMENT		2-01-24
FRAME DETAIL	(4)	1:50
  		FEI 57
JEC JAPAN ENGINEERING CONSULTANTS CO., LTD.		



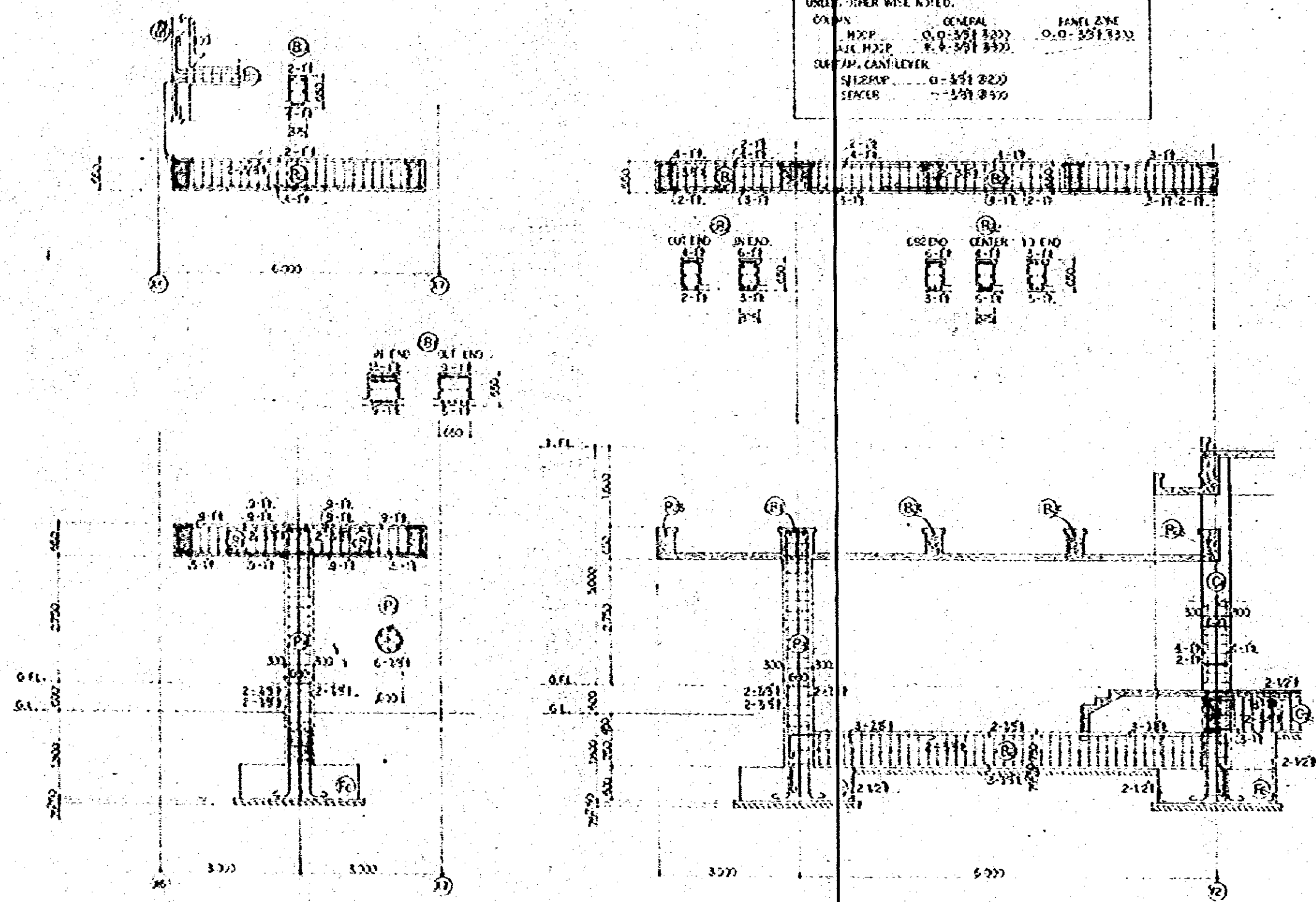
UNLESS OTHER WISE NOTED:

COLUMN	GENERAL	FRAME ZONE
HOOP	Ø-351 Ø300	Ø-371 Ø300
AUX. HOOP	Ø-351 Ø300	
GIRDER, SUB BEAM		
STRIP	Ø-351 Ø300	
SMOOR	Ø-371 Ø300	

Ⓣ LINE DETAIL SCALE 1:50

REVISION	DATE	BY
FRAME DETAIL	151	1:50

UNLESS OTHERWISE NOTED.		
COLUMN	GENERAL	PANEL ZONE
MOOP	O.O-351 822	O.O-351 830
AIR MOOP	R.V-351 830	
CURTAIN WALL		
SLIDER	O-351 820	
SEALER	R-351 830	

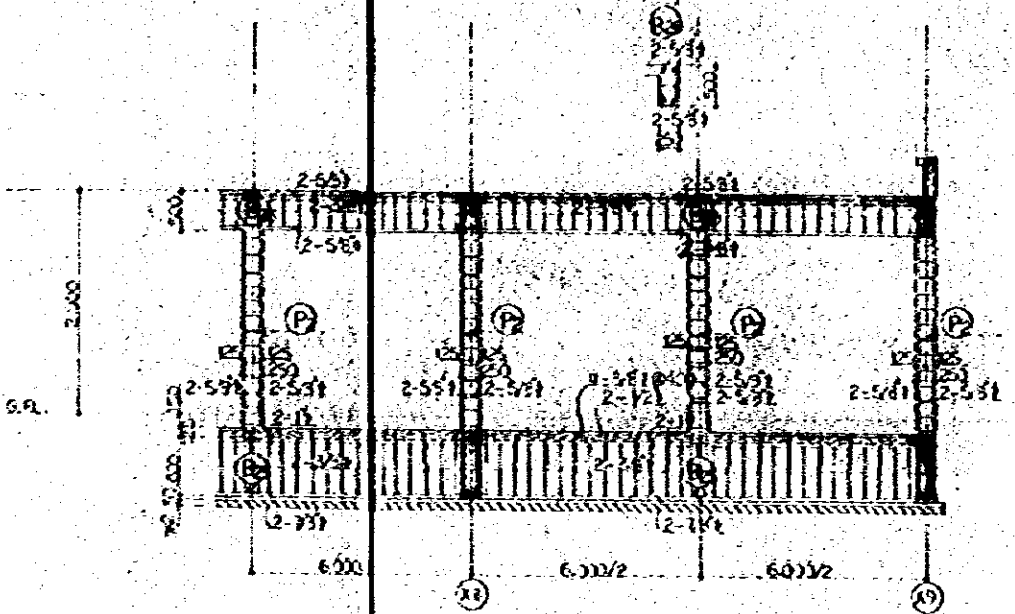


ENTRANCE EYES FRAME DETAIL SCALE 1:50

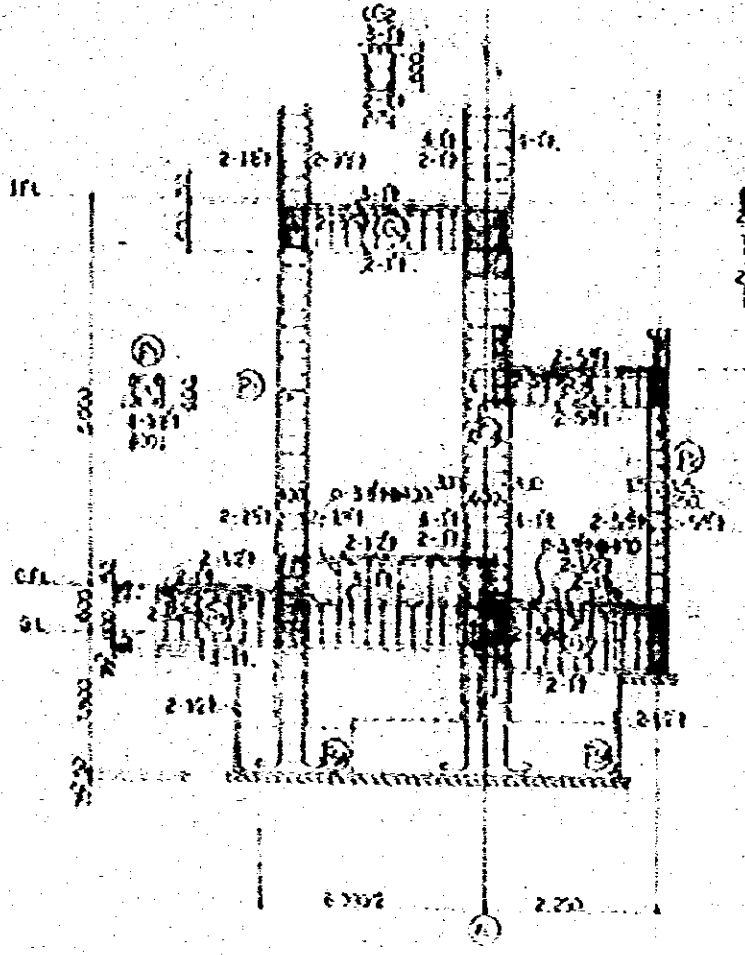
NATIONAL ENGINEERING CONSULTANTS OF JAPAN		3-01-20
FRAME DETAIL	(6)	1:50
JAPAN ENGINEERING CONSULTANTS OF JAPAN		FEB 68

UNLESS OTHERWISE NOTED.

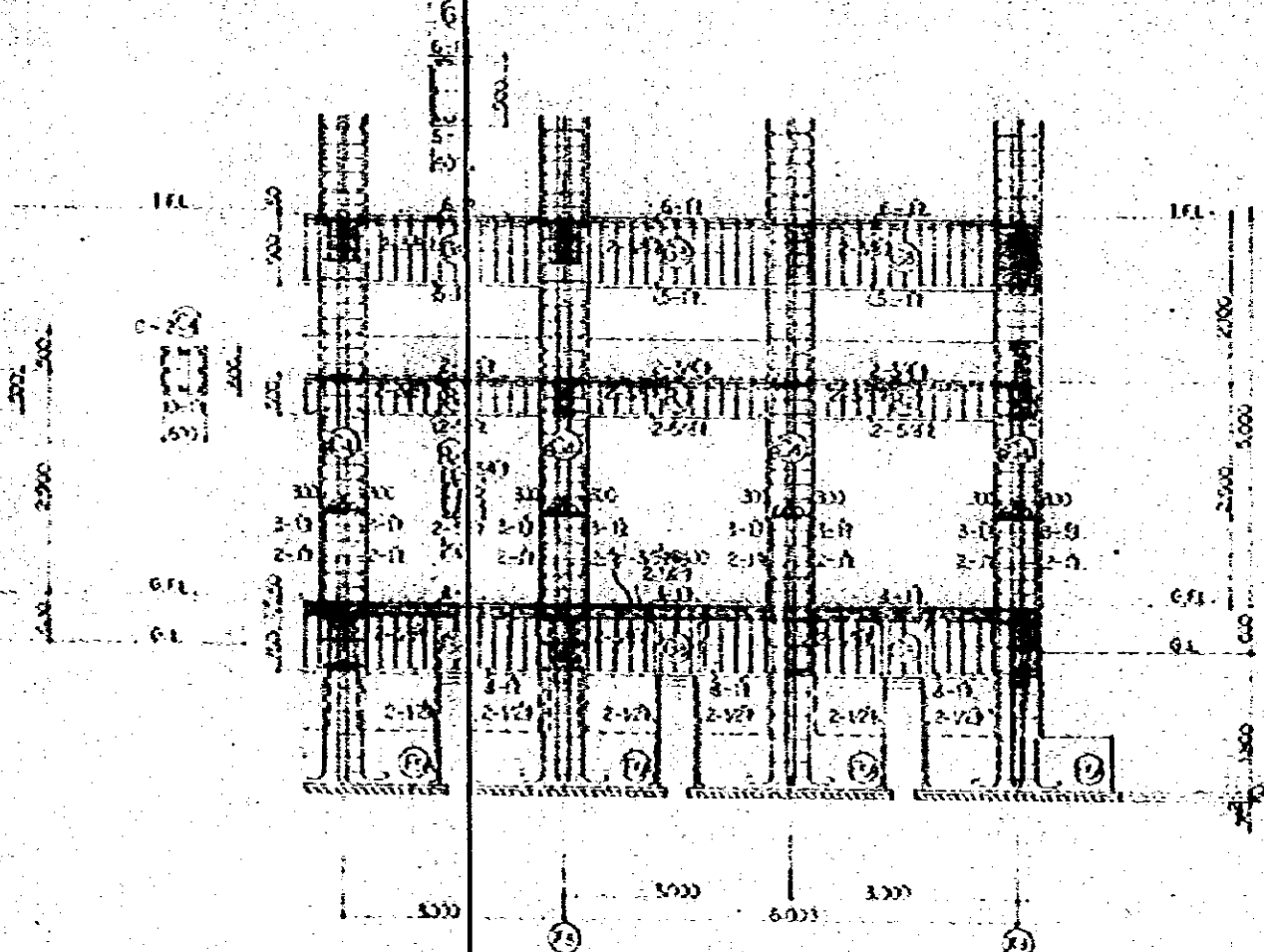
COLUMN, WALL	GENERAL	RAV. LINE
NO. 1	0-3513200	0-3513300
NO. 2	4-4-3513300	
CORNER, BEAM		
SPACER	0-3513200	
SPACER	--3513300	



(2) LINE DETAIL SCALE 1:50

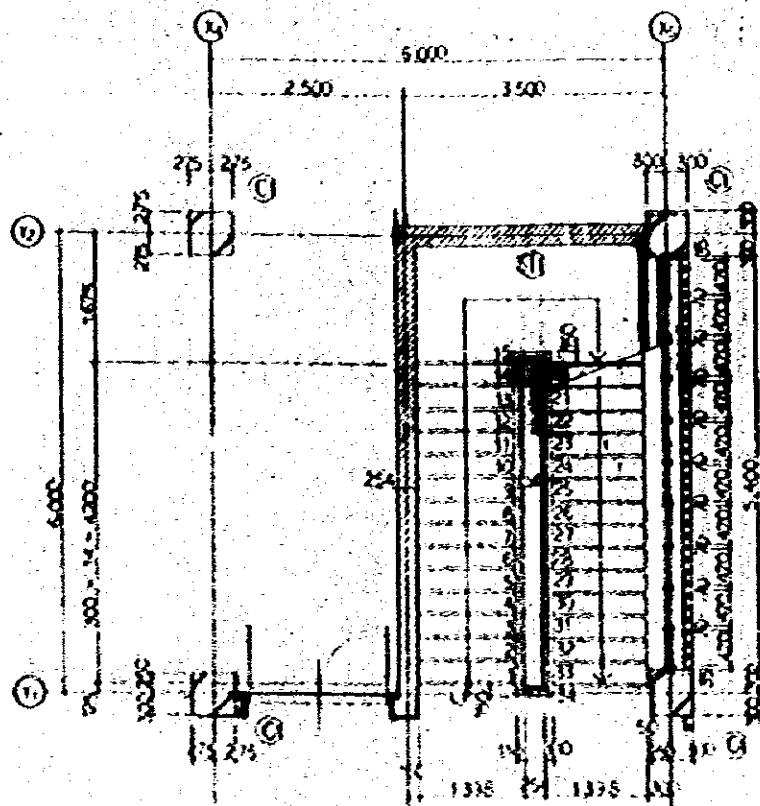


(1) LINE DETAIL SCALE 1:50

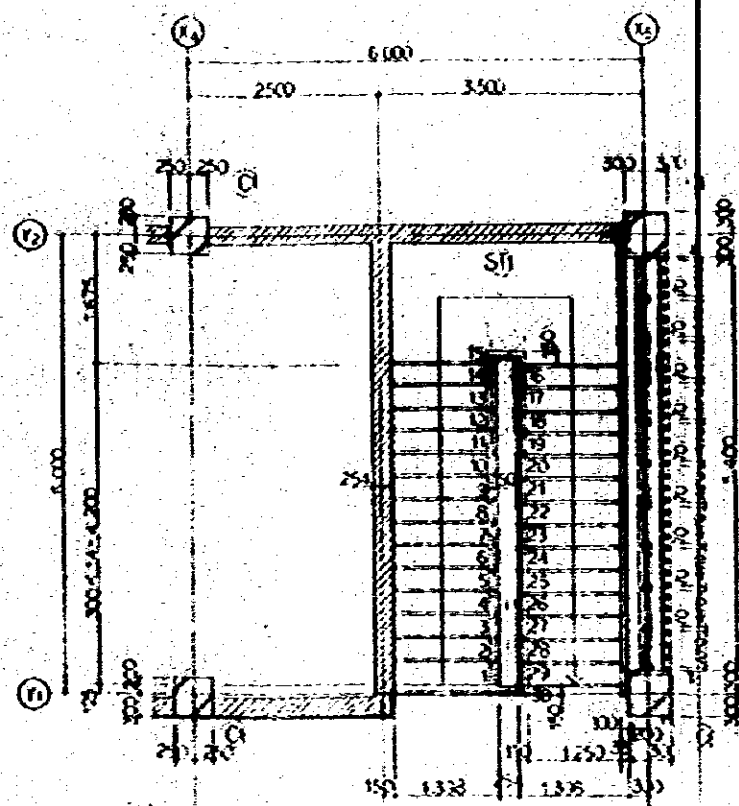


(3) LINE DETAIL SCALE 1:50

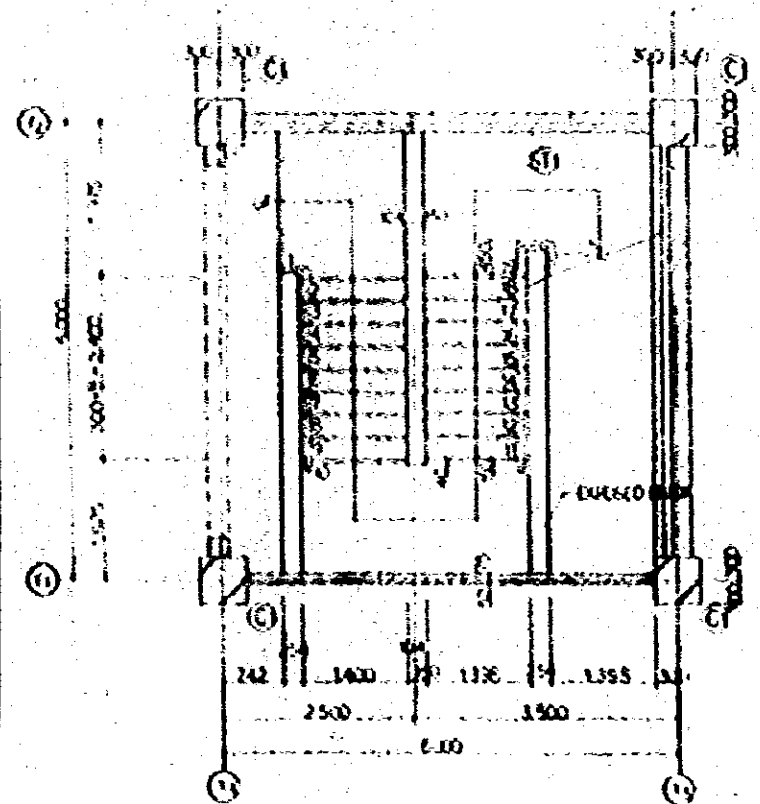
NATIONAL BROADCASTING BOARD OF RADIO BROADCASTERS	8-01-21
FRAME DETAIL (7)	13 50
Drawn by [Signature]	Checked by [Signature]
DATE APRIL ENGINEERING COMPANY, INC., LTD.	



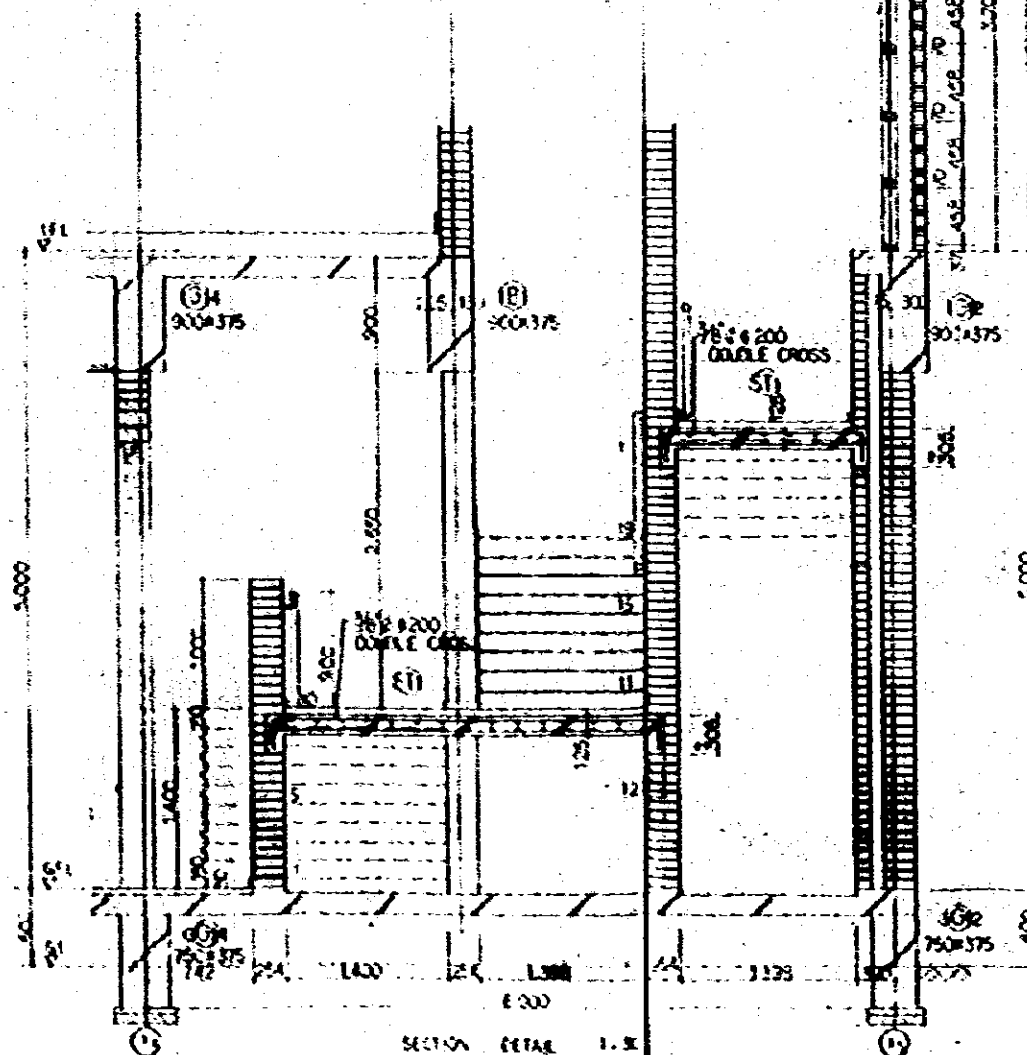
1st PLAN 1:50



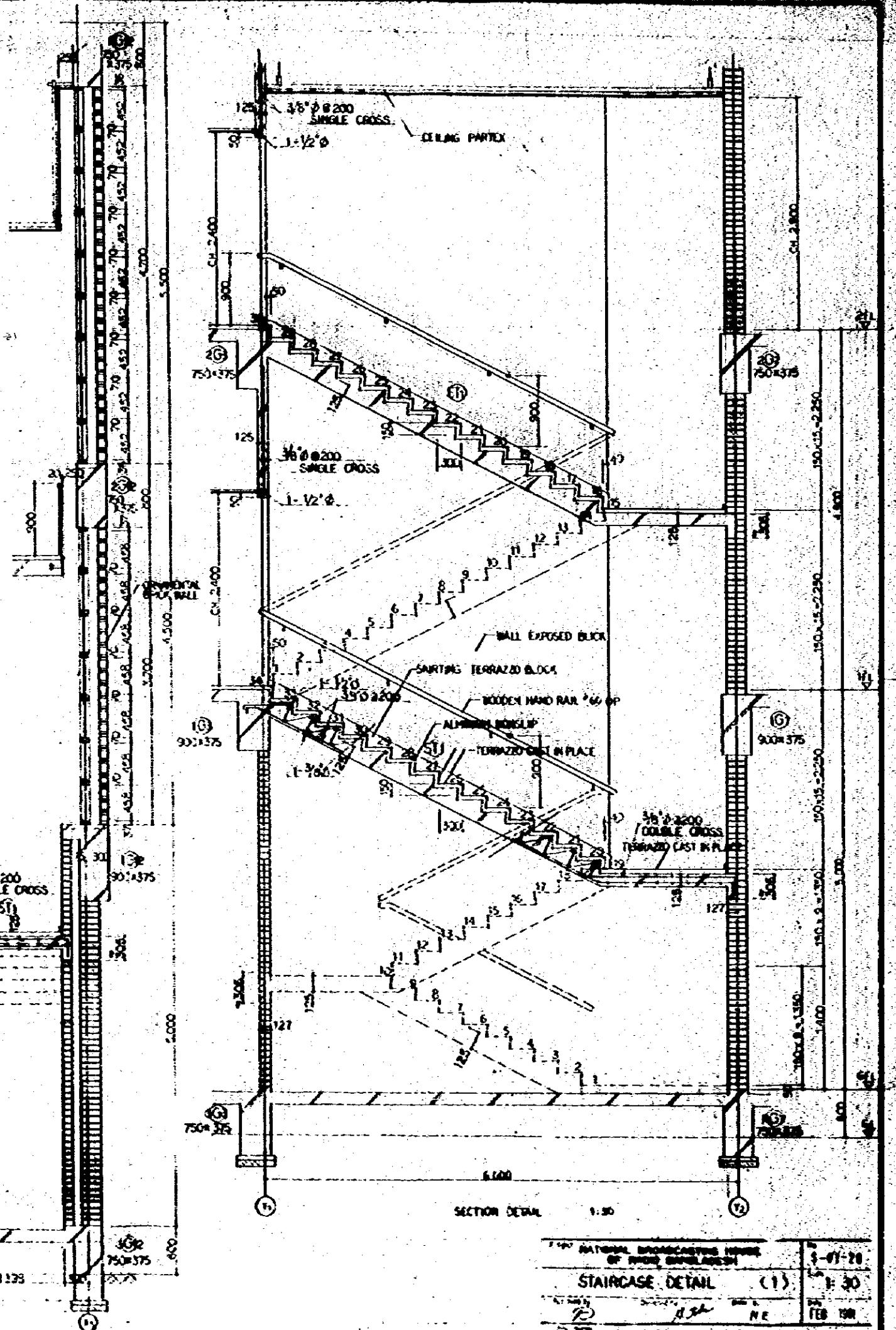
2nd PLAN 1:50



6th PLAN 1:50

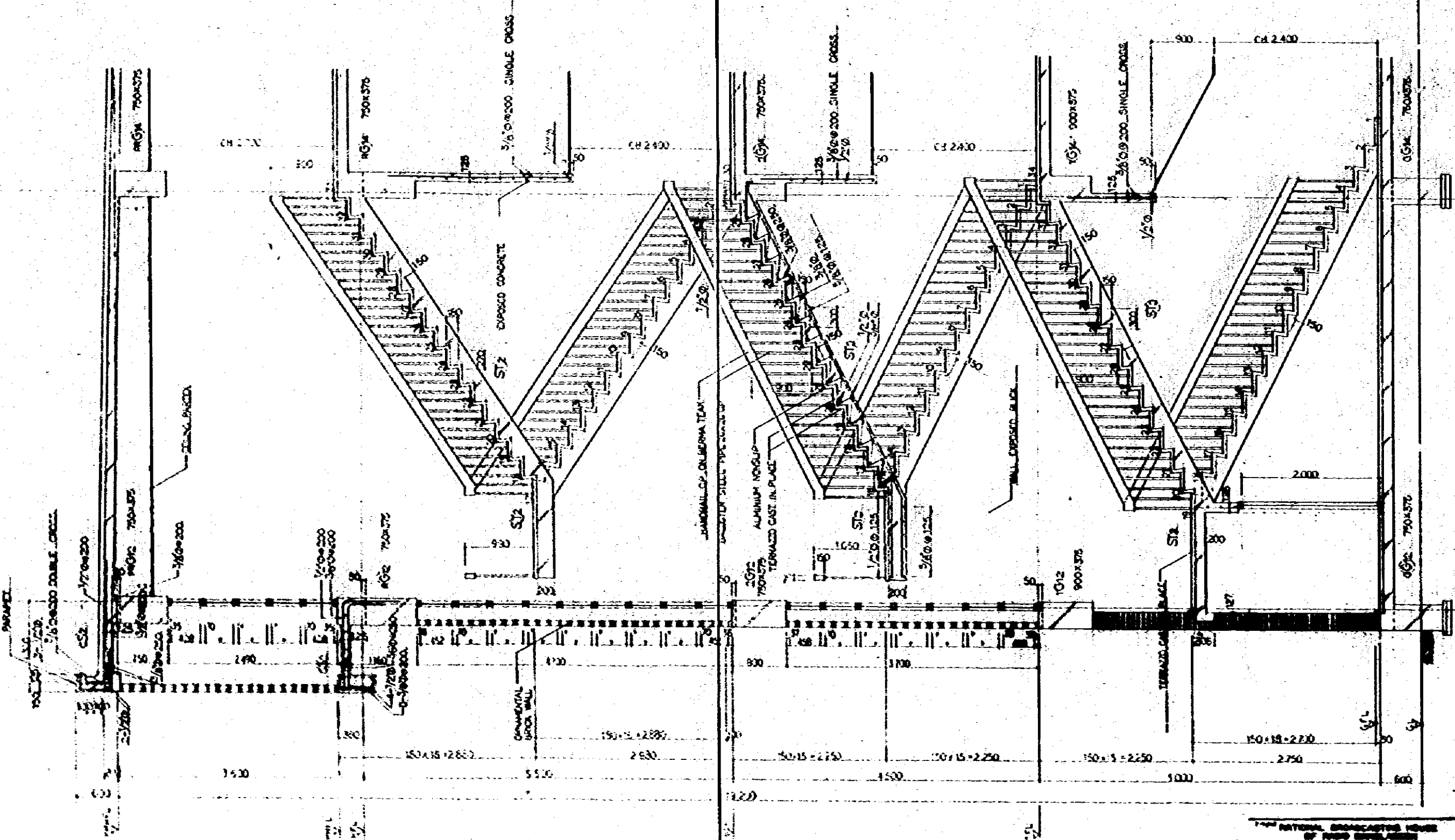


SECTION DETAIL 1:50

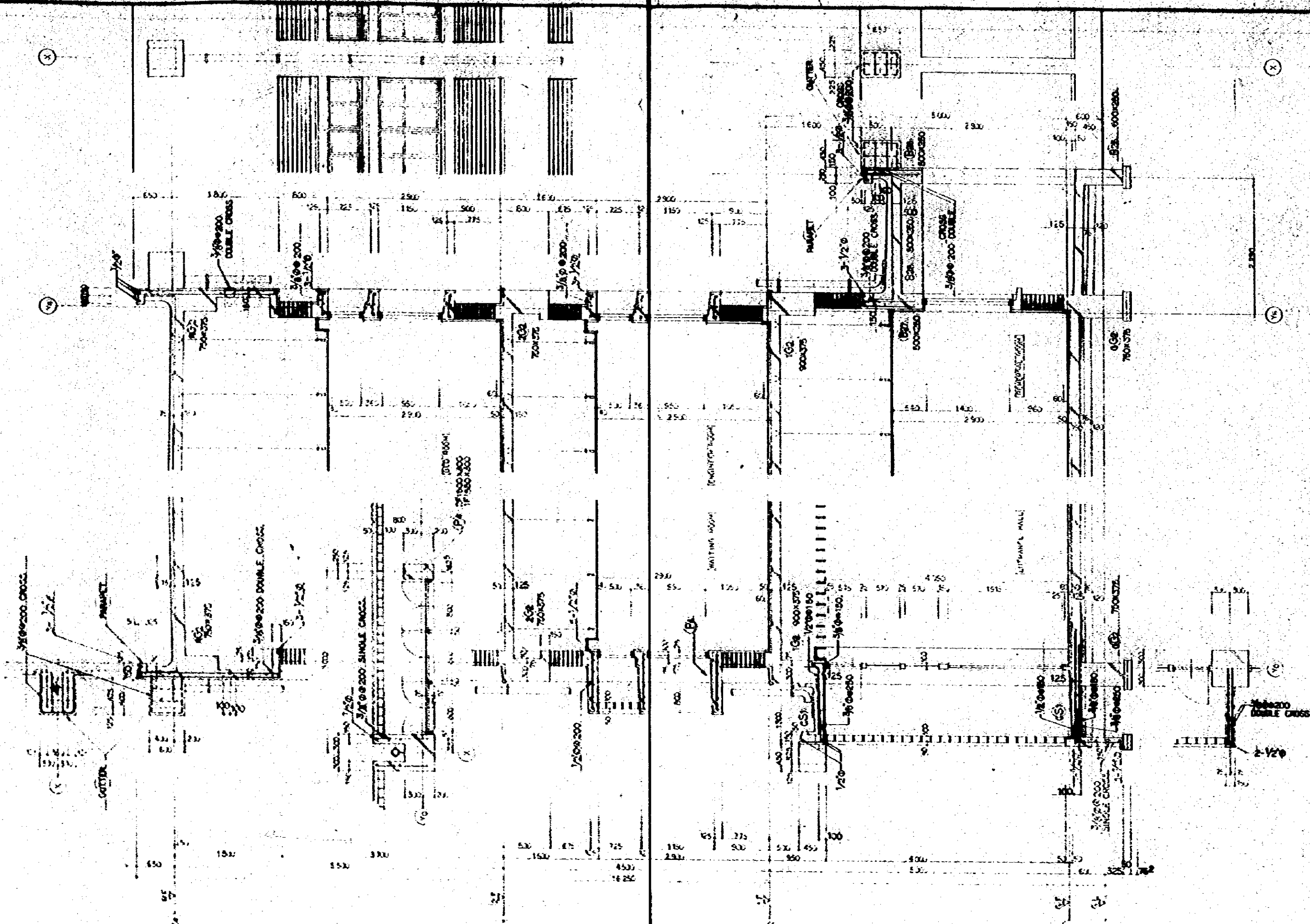


SECTION DETAIL 1:50

NATIONAL ARCHITECTURAL INSTITUTE OF JAPAN		1-47-28 1:50 FEB 1981
STAIRCASE DETAIL (1)		1:50
JAPAN ENGINEERING CONSULTANTS CO., LTD.		N.E.

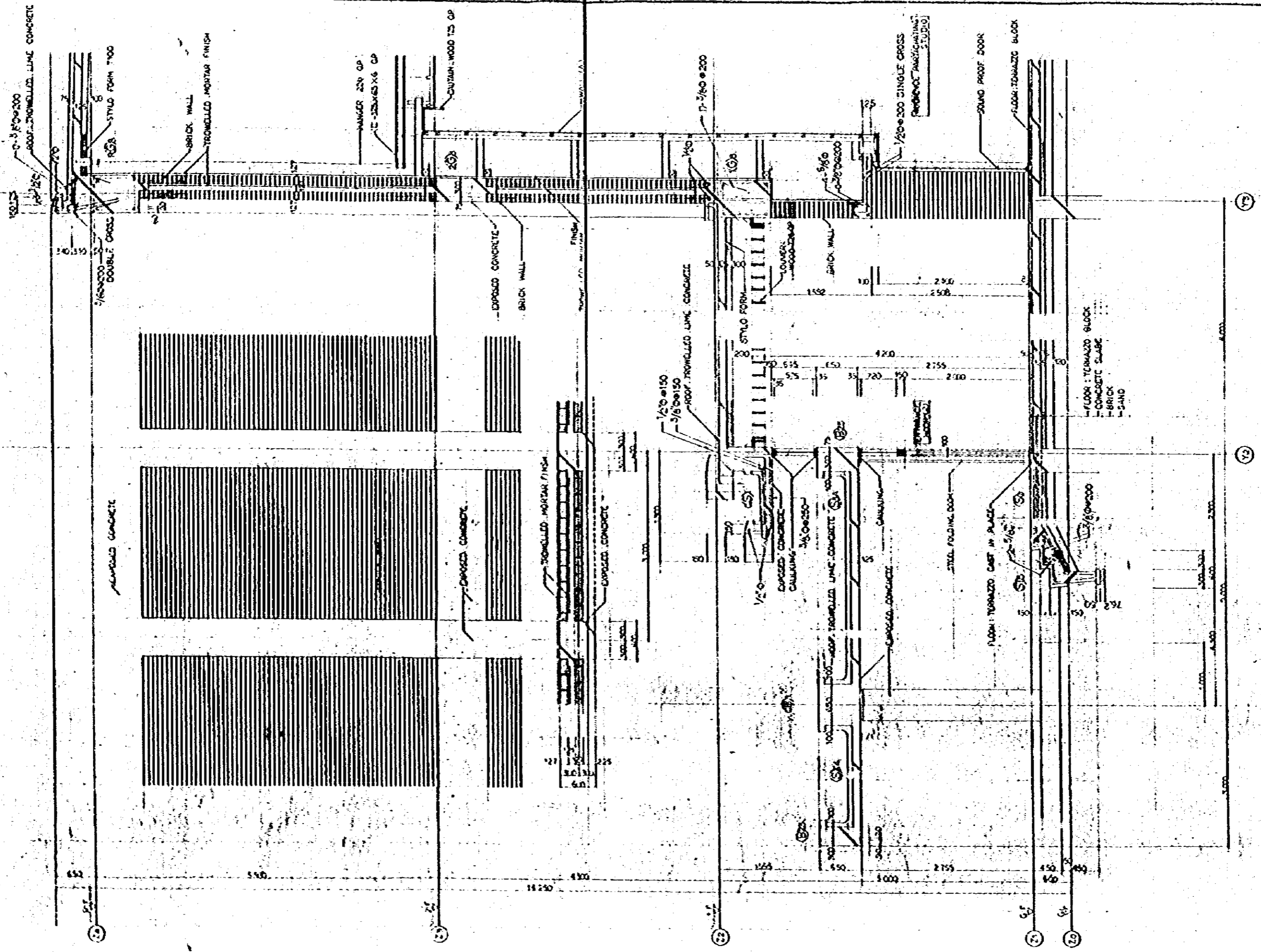


NATIONAL BROADCASTING HOUSE
 OF JAPAN BUILDINGS
STAIRCASE DETAIL (2)
 1:30
 FEB 58
 JECB JAPAN ENGINEERING CONSULTANTS CO., LTD.

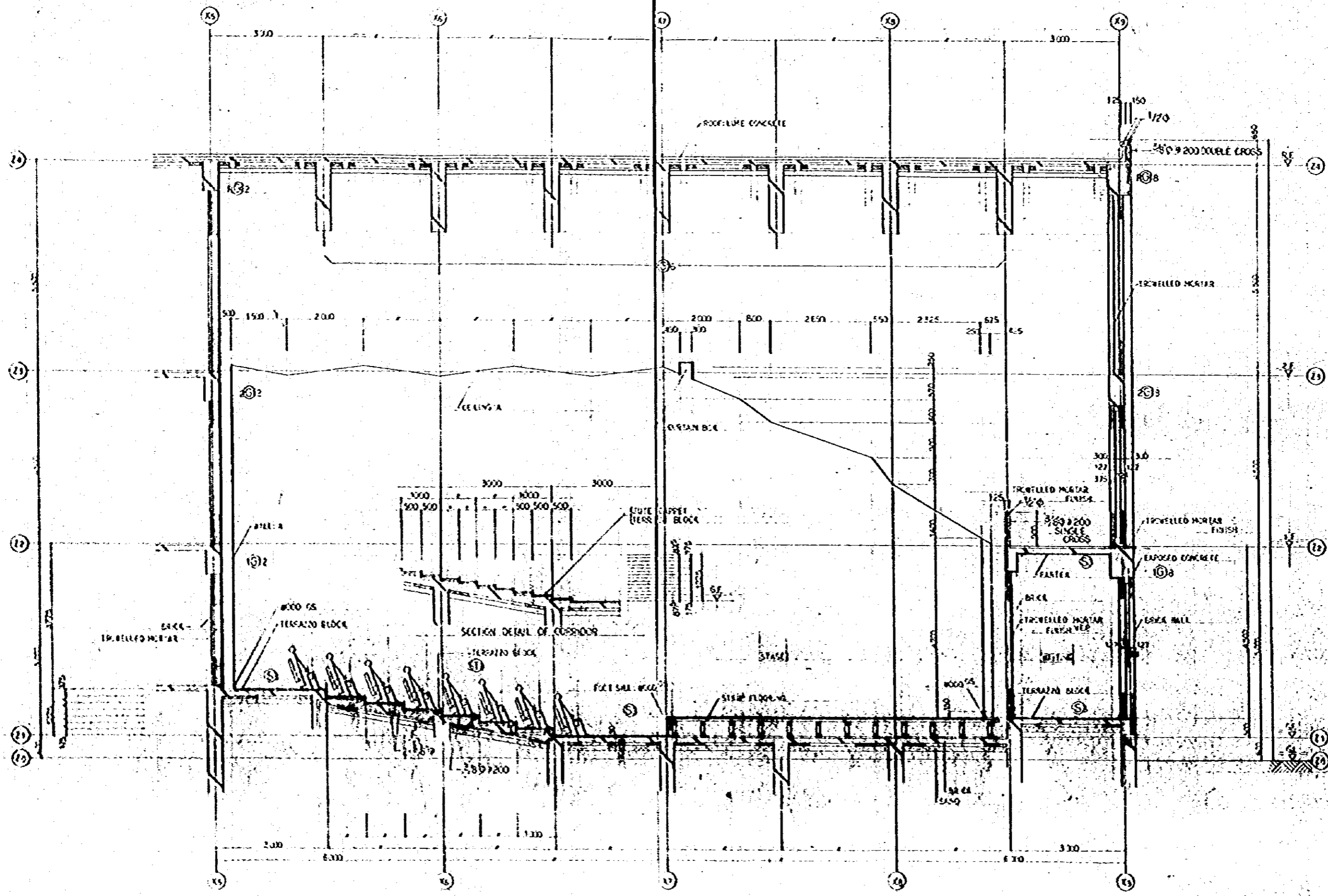


SECTION DETAIL 9-V50

NATIONAL BROADCASTING HOUSE OF BIRD SHANAGORI		5-61-30
FACADE DETAIL (1)		1:30
HE		FEB 52
JAPAN ENGINEERING CONSULTANTS CO., LTD.		

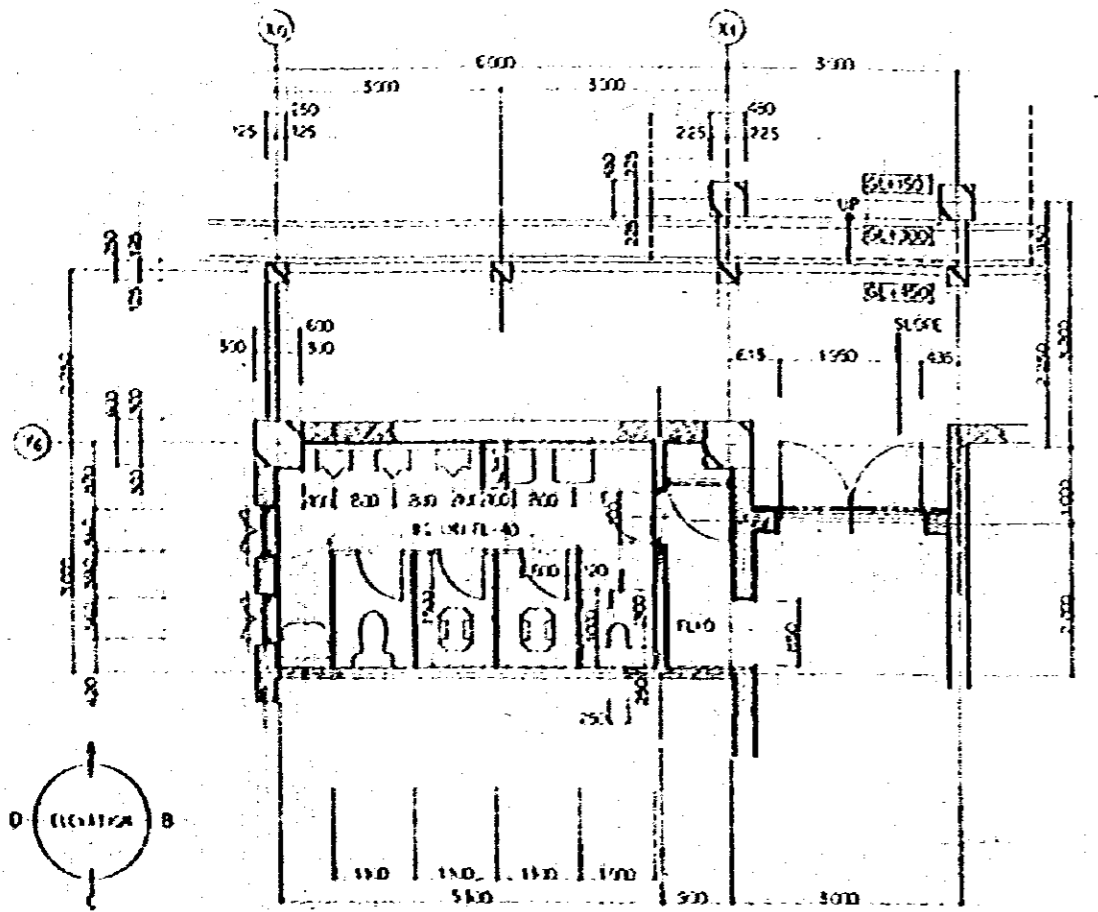


NATIONAL BROADCASTING HOUSE OF RADIO BANGLADESH		5-91-91
FACADE DETAIL (2)		1:30
DATE	SCALE	DATE
1972	1/20	FEB 1972
JAPAN ENGINEERING CONSULTANTS CO., LTD.		

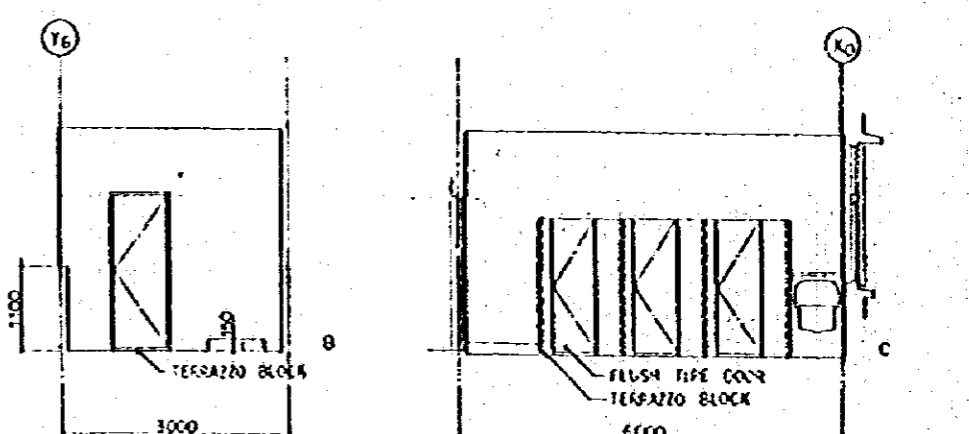
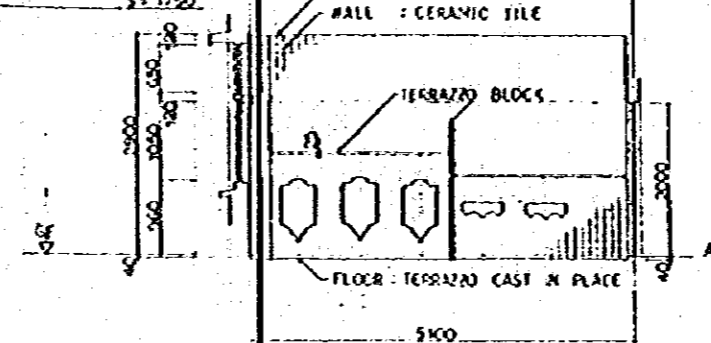


SECTION DETAIL OF AUDIENCE PARTICIPATING STUDIO 3-550

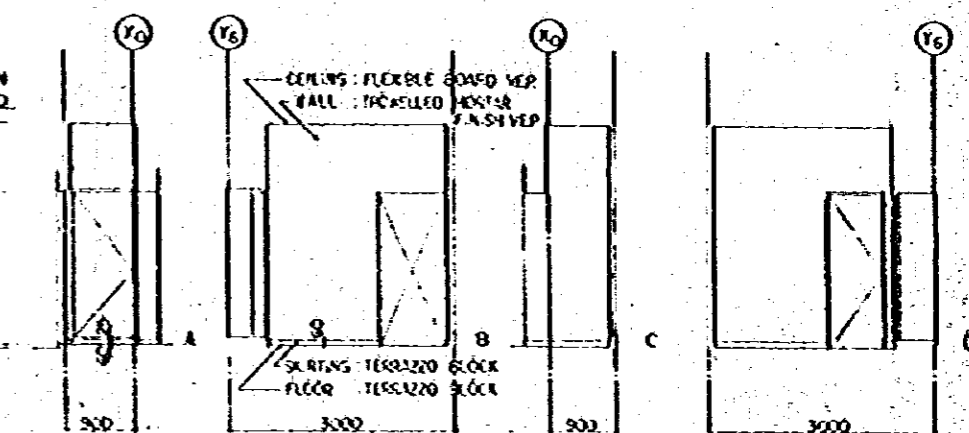
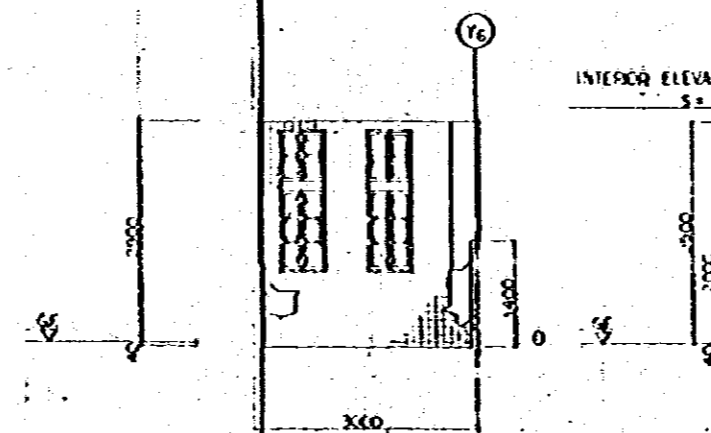
NATIONAL BROADCASTING HOUSE			
OF RADIO BANGLADESH			
SECTION DETAIL			(11)
Scale	1:100	DATE	FEB 59
Author	J.E.	DR	J.E.
JAPAN ENGINEERING CONSULTANTS CO., LTD.			



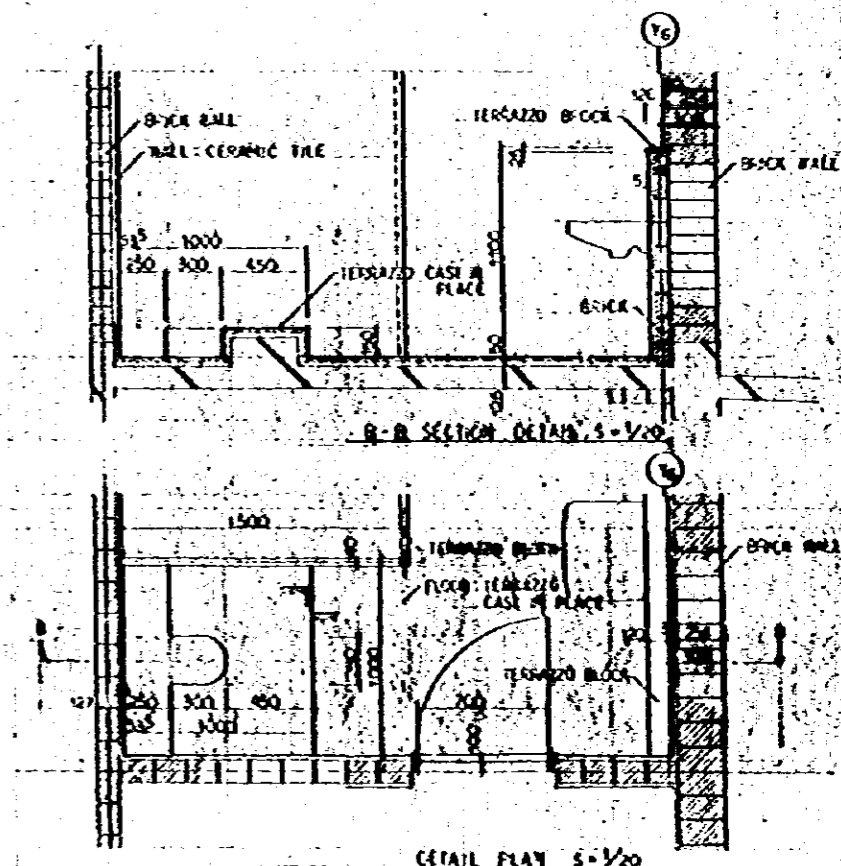
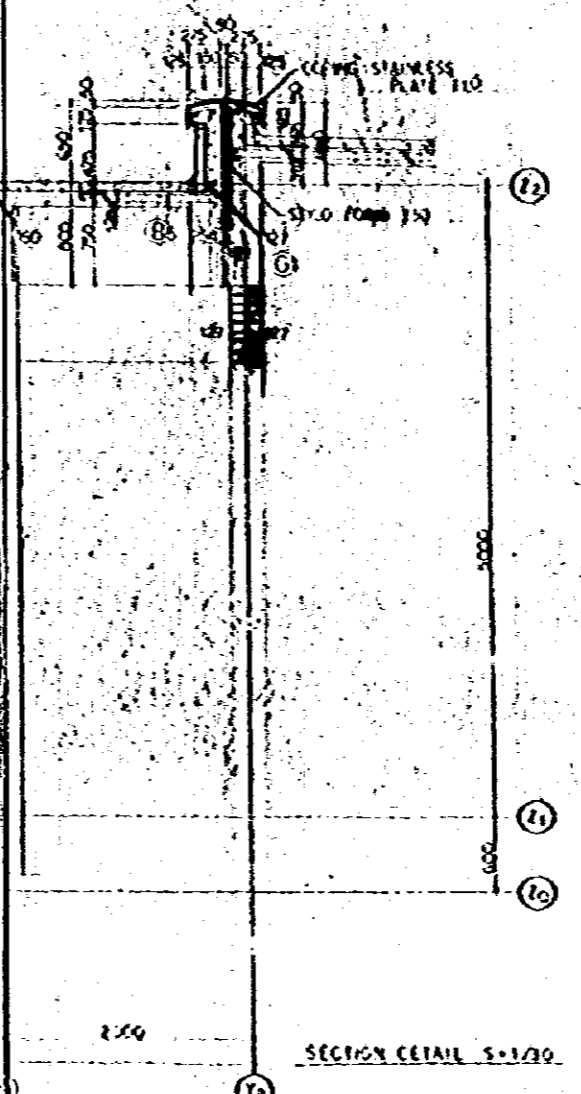
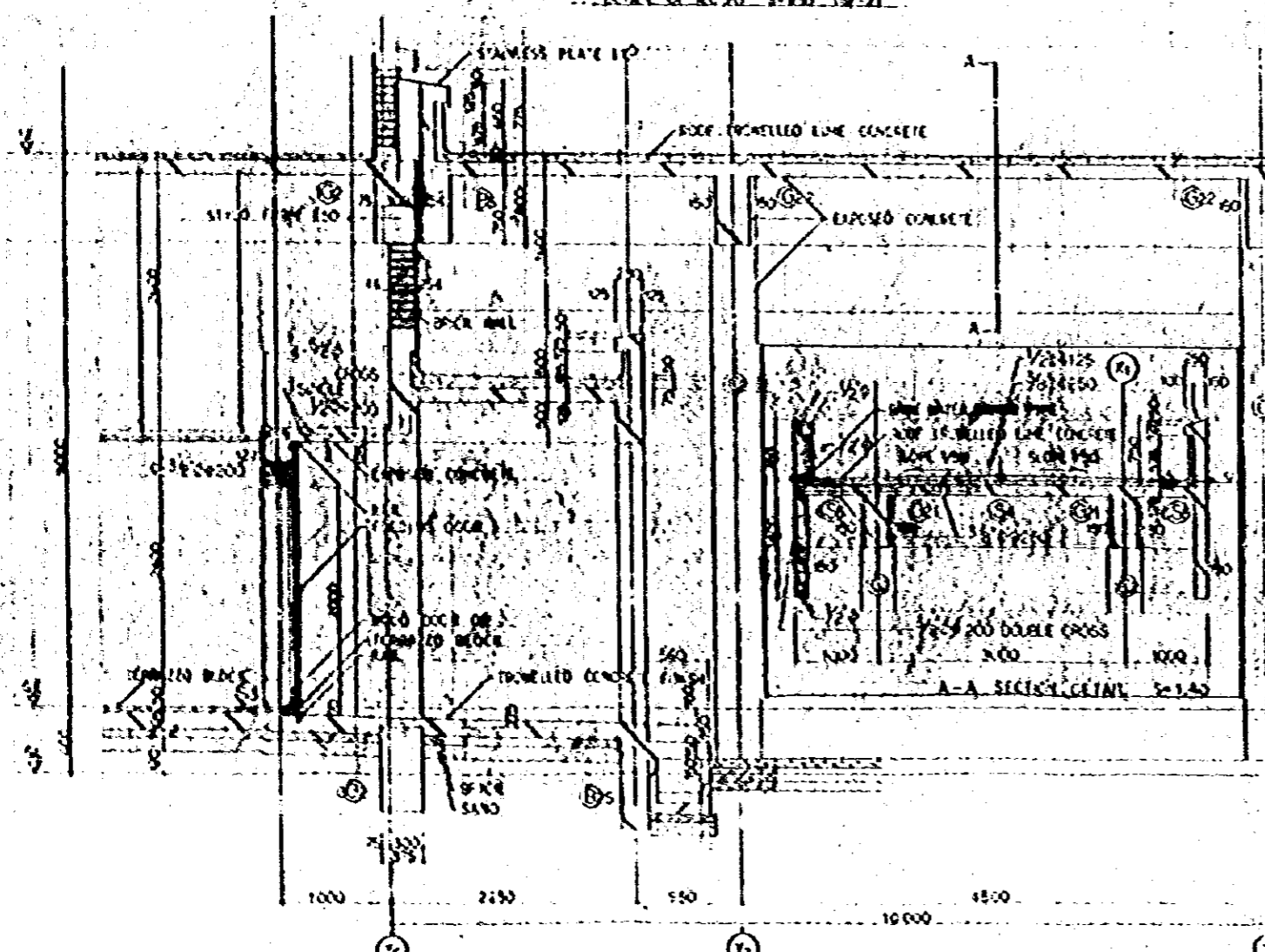
NC(1) INTERIOR ELEVATION
S=1/50



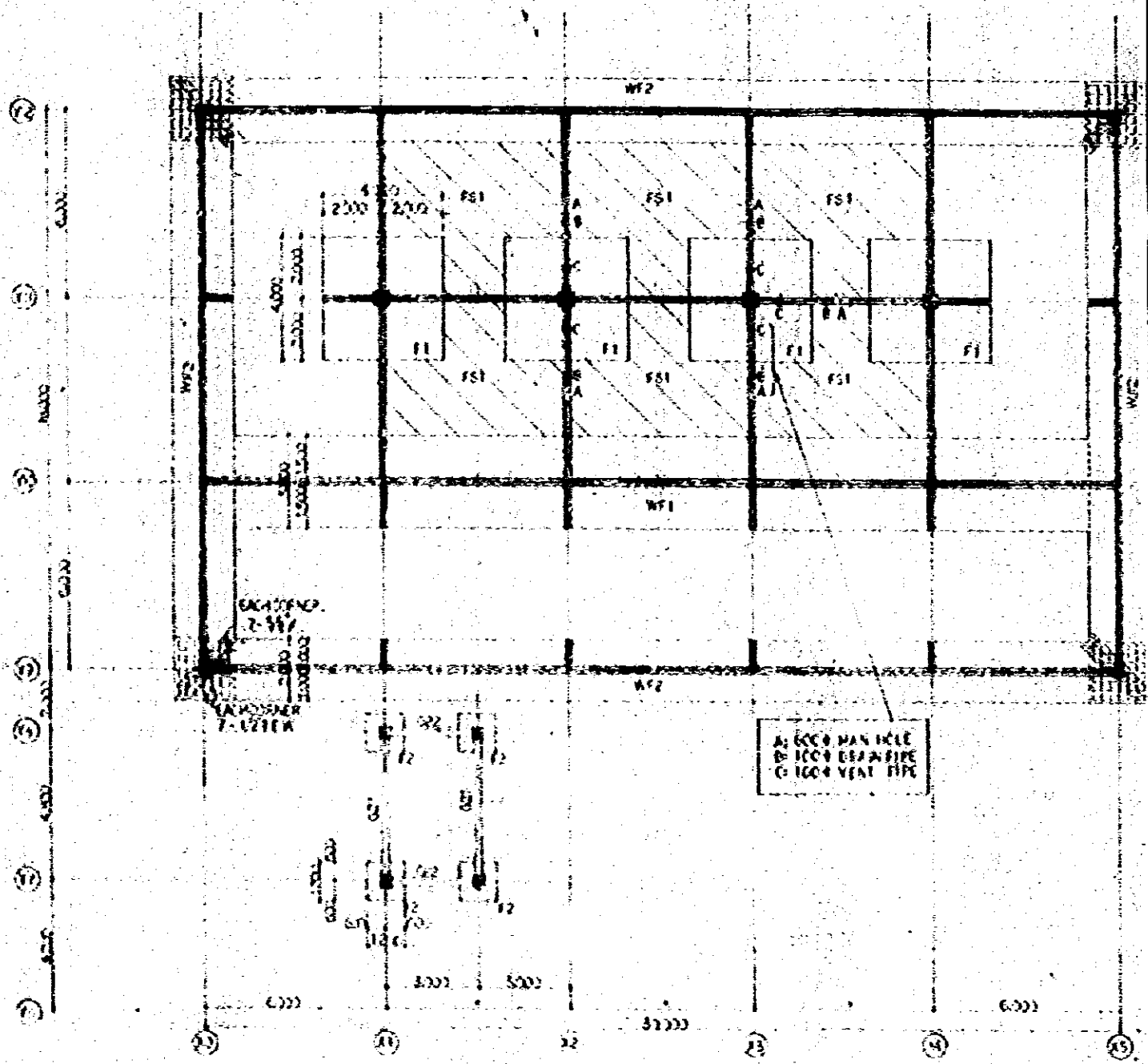
INTERIOR ELEVATION
S=1/50



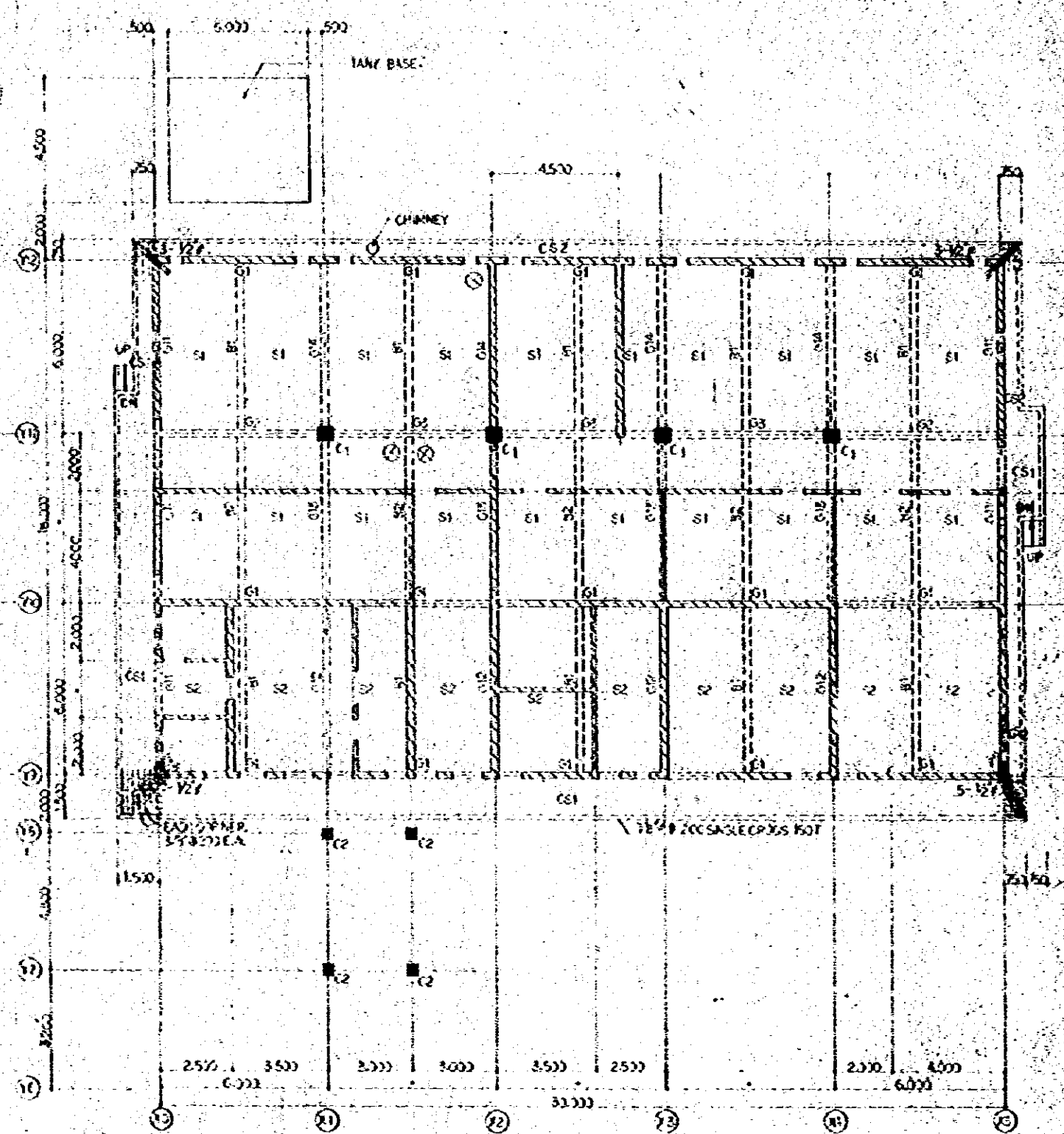
DETAIL OF RC(2) S=1/50 (54-2)



NATIONAL BROADCASTING HOUSE OF RADIO BANGLADESH		S-01-31
SECTION DETAIL (2)		1/50
DATE	DESIGNER	SCALE
11.1.58	H. E.	1/50
J.E.C. JAPAN ENGINEERING CONSULTANTS CO., LTD.		

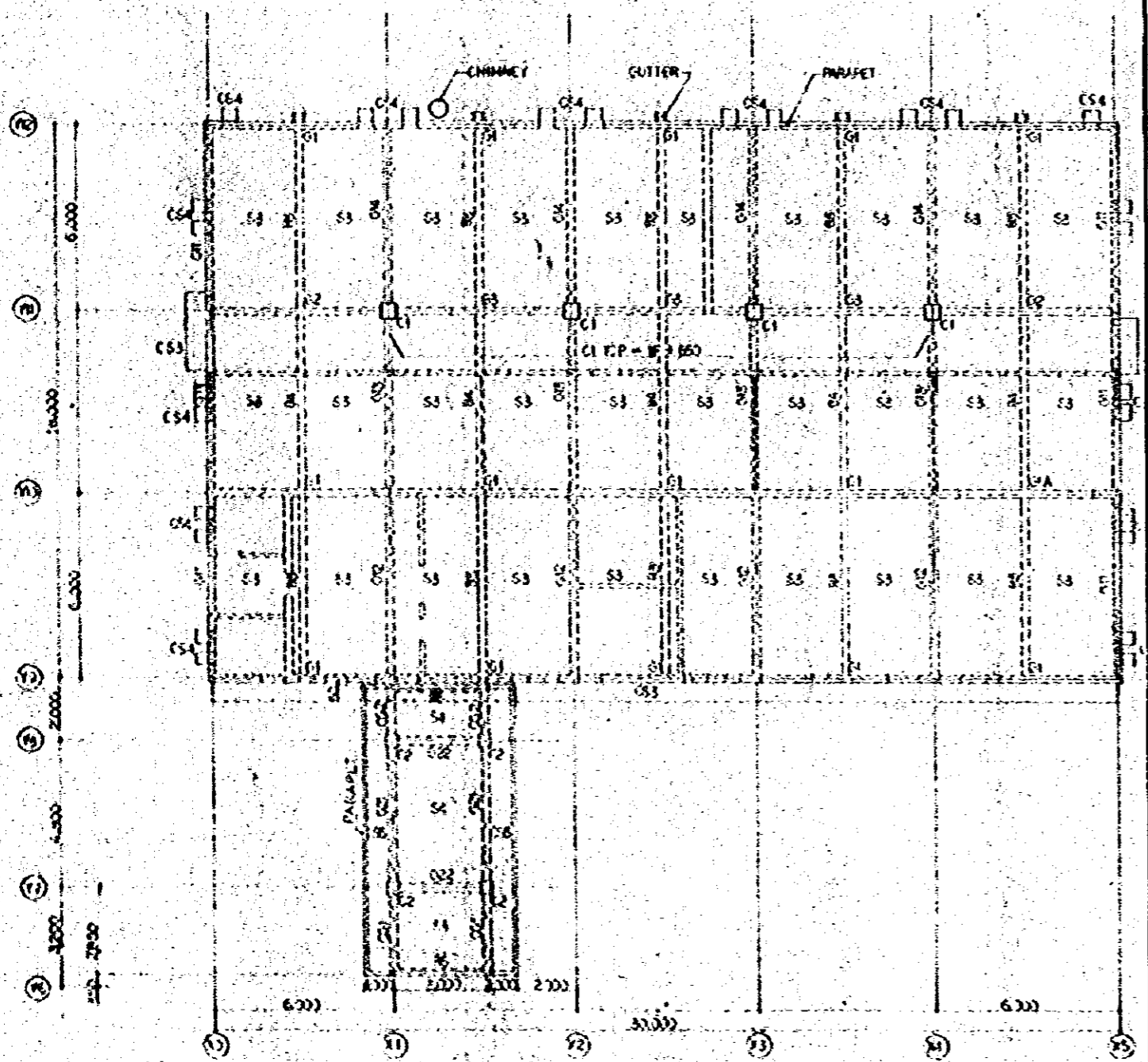


FOUNDATION FLAT S 1-100



GE FRAMES FLAT S 1-100

FEDERAL BROADCASTING HOUSE OF P.O. BANGLADESH		5-07-01
ANNEX (1)		1100
DATE 12/11/00		FED. HSE.
P.L. ENGINEERING & ARCHITECTURE CO. LTD.		



REF. DRAWING PLAN S 1:100

NATIONAL ENGINEERING INSTITUTE OF BANGLADESH		1-22-88
ANNEX	(2)	1:100
DATE: 12 FEB 88		12 FEB 88
BY: [Signature]		