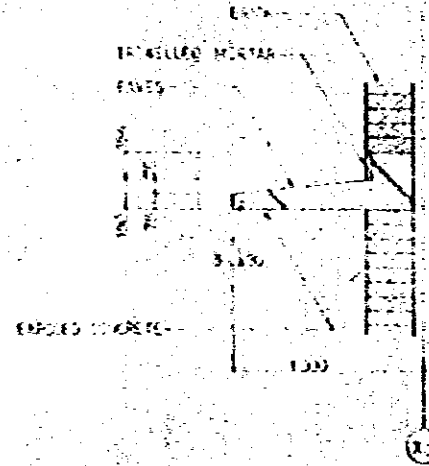
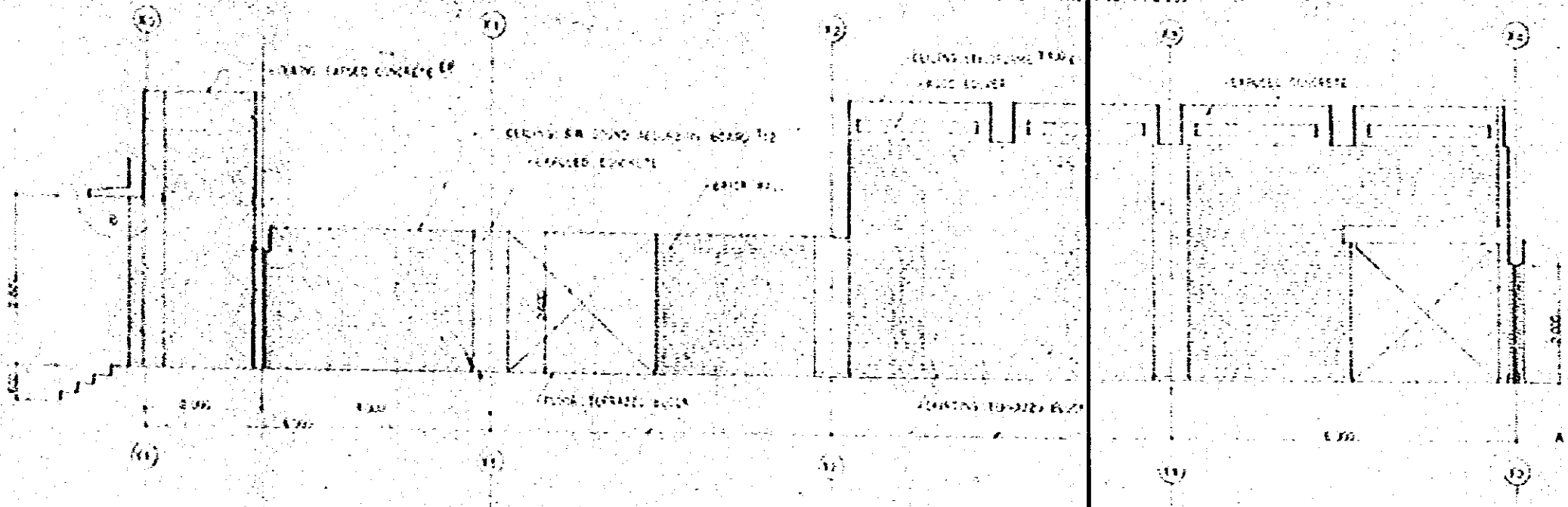


ENTRANCE HALL INTERIOR ELEVATION (1/50)

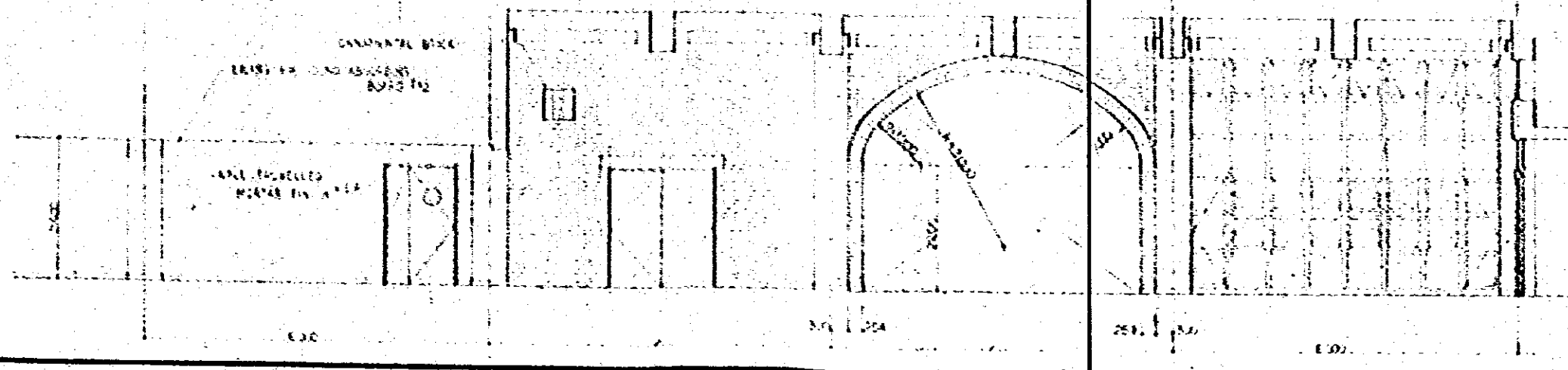
ENTRANCE HALL

ELEVATION OF ENTRANCE HALL (1/50)

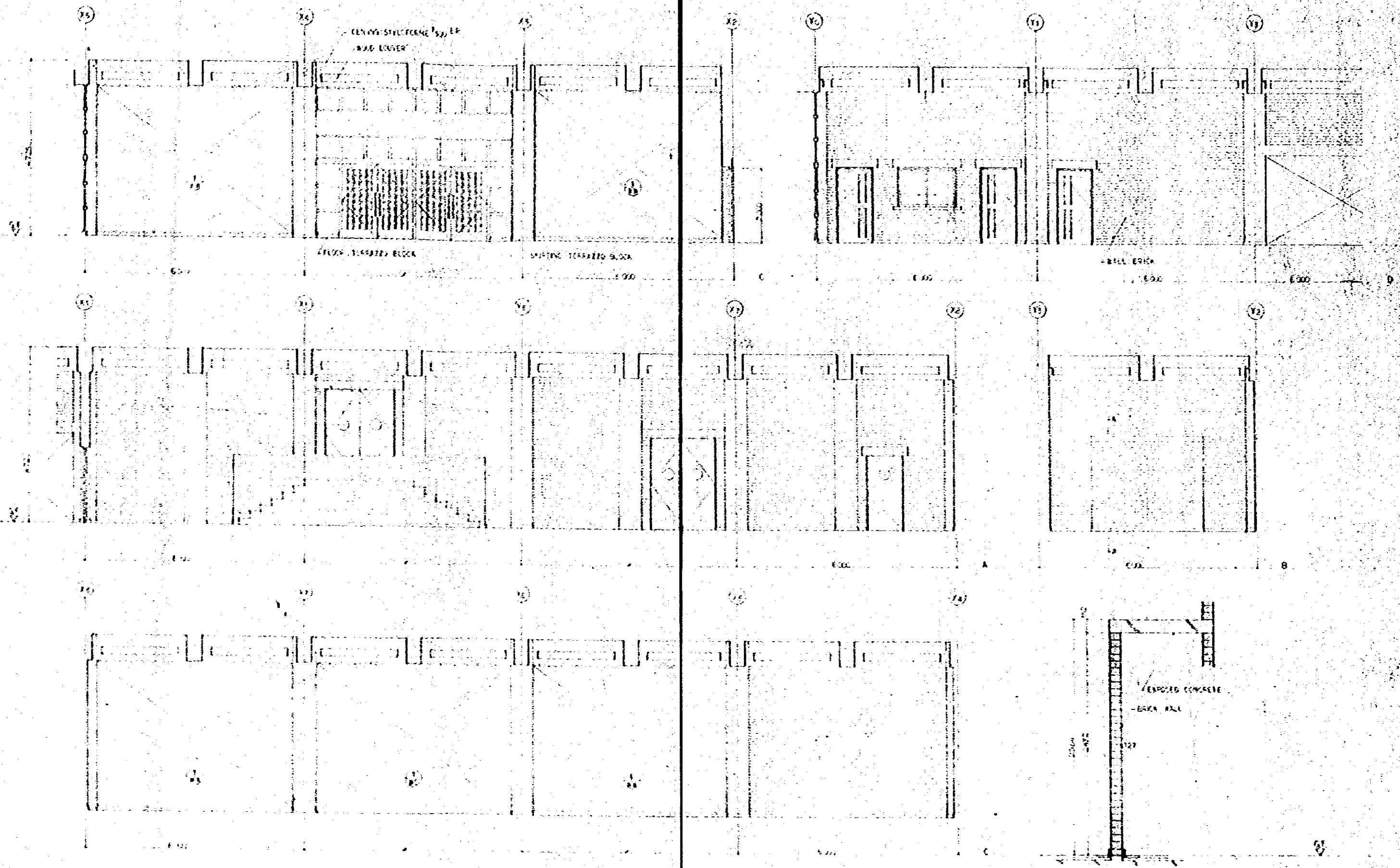
A-A SECTION DETAIL (1/20)



DETAIL OF WINDOW (1/20)

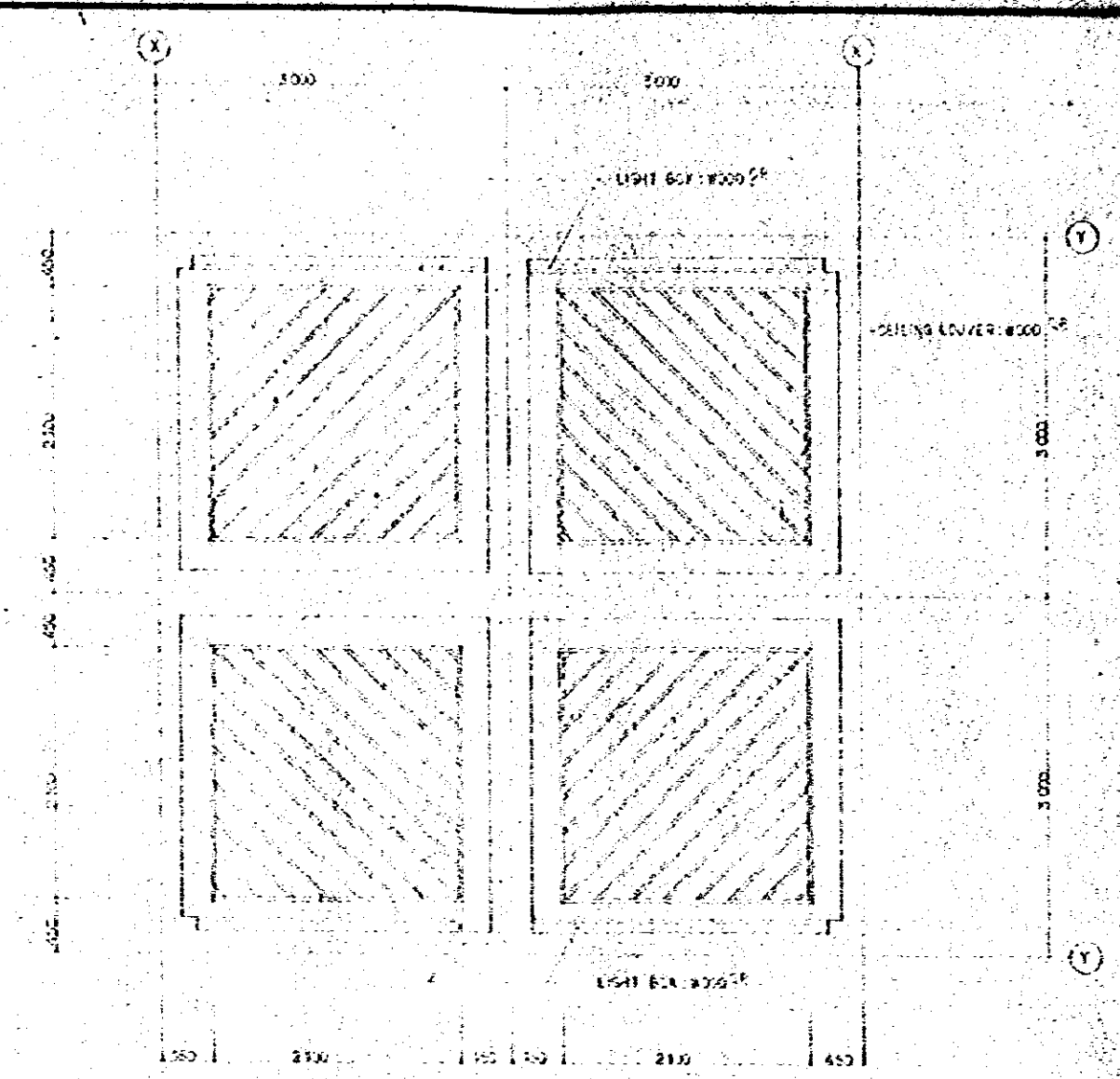
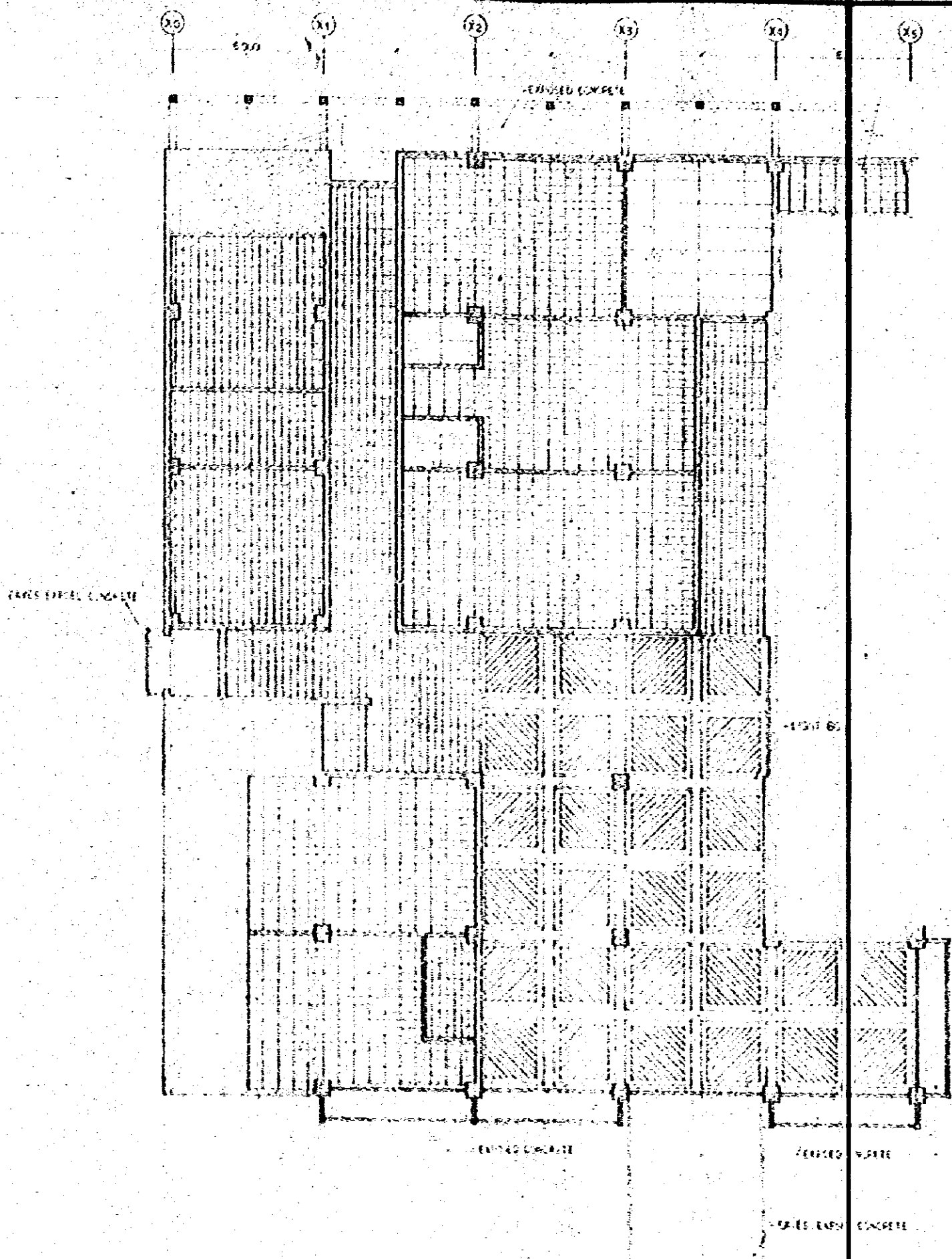


ENTRANCE HALL INTERIOR ELEVATION S-150



A-A SECTION DETAIL S-150

Project	NATIONAL BROADCASTING HOUSE OF RADIO BROADCASTING	Scale	1/50
Drawing No.	ENTRANCE HALL INTERIOR ELEVATION	Date	1/20
Designer	(Signature)	Checker	K.C.
Drawn	(Signature)	Scale	1/50
D73 JAPAN ENGINEERING CONSULTANTS CO., LTD.			

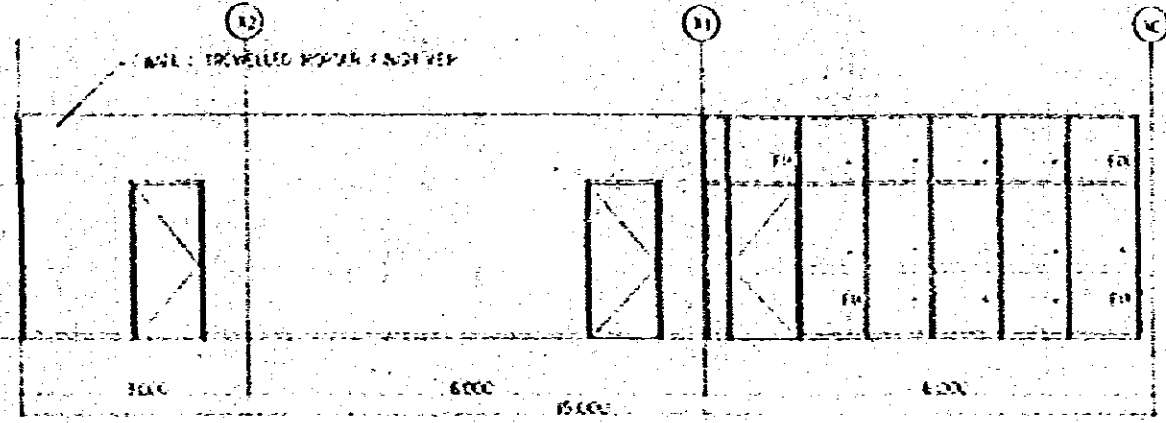
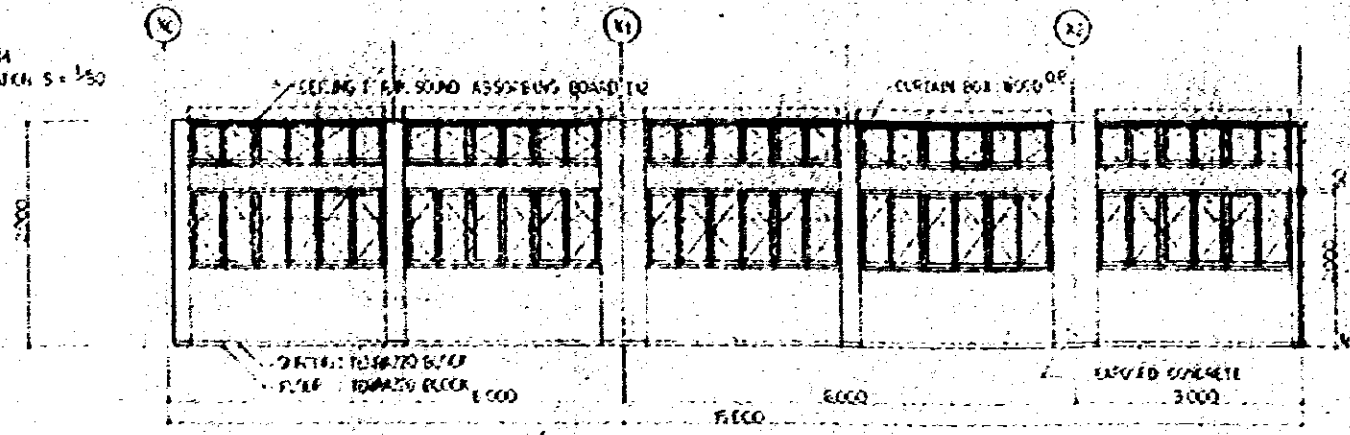


DETAIL OF CEILING LOWER & LIGHT BOX 5-5000

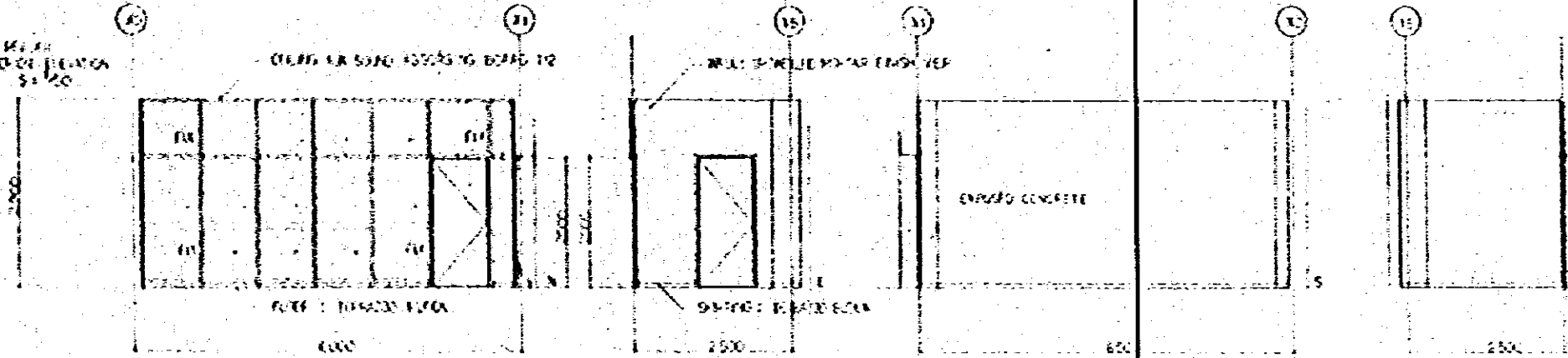
NATIONAL BROADCASTING HOUSE OF RANGOON		NO. R-01-03
REFLECTED CEILING PLAN OF GROUND FLOOR		SCALE 1/25
DETAIL OF CEILING LOWER & LIGHT BOX		DATE FEB 1950
		BY K.S.
BY HAN ENGINEERING CONSULTANTS CO., LTD.		



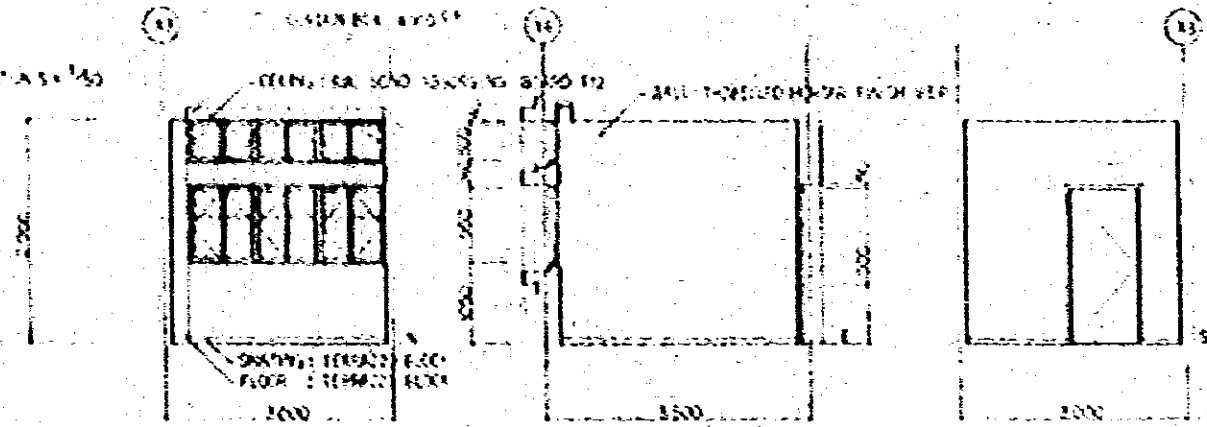
NEWS STAFF ROOM  
INTERIOR ELEVATION S-150



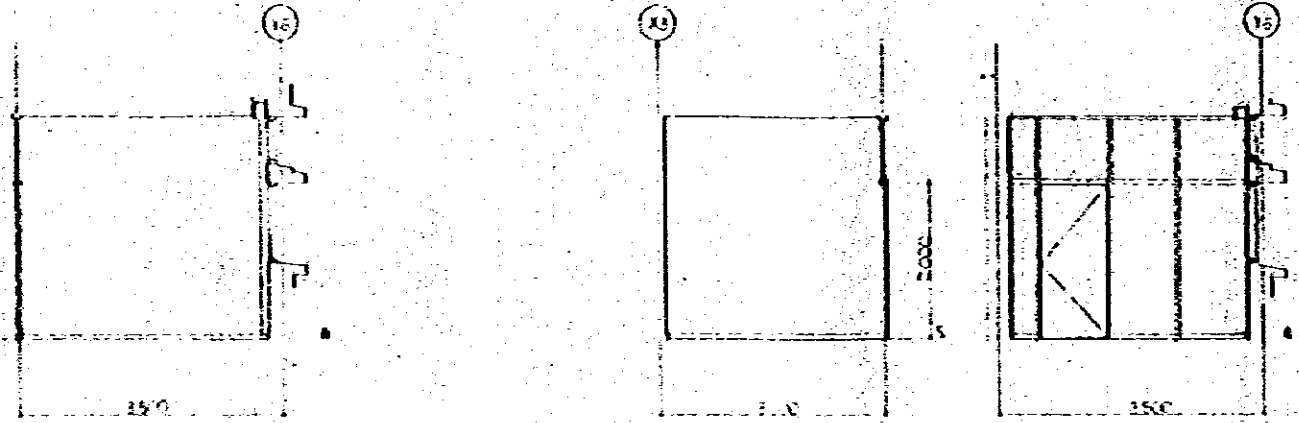
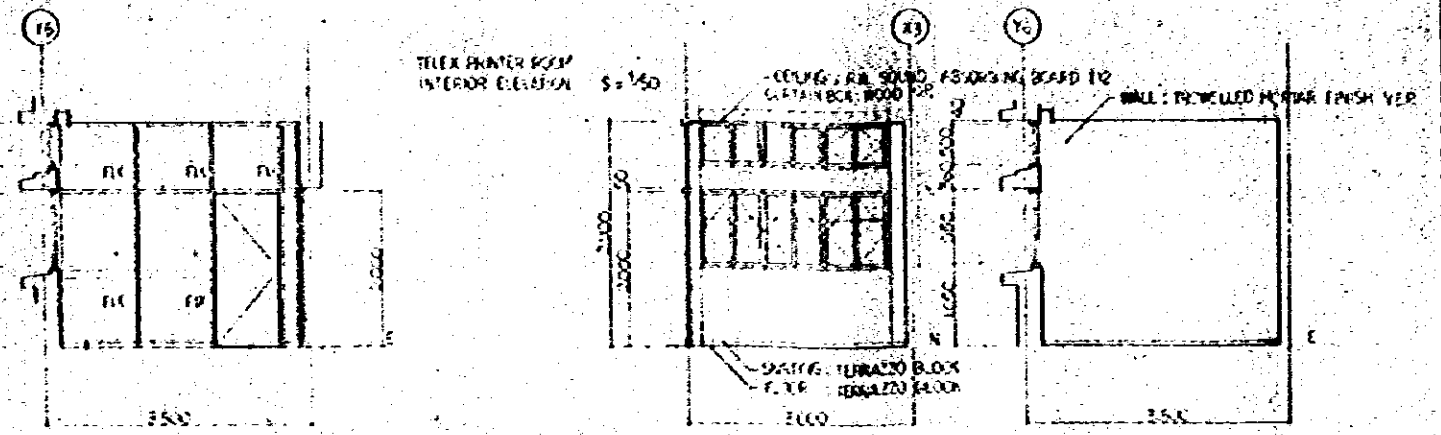
NEWS EDITOR AND HEAD  
WRITING ROOM INTERIOR ELEVATION  
S-150



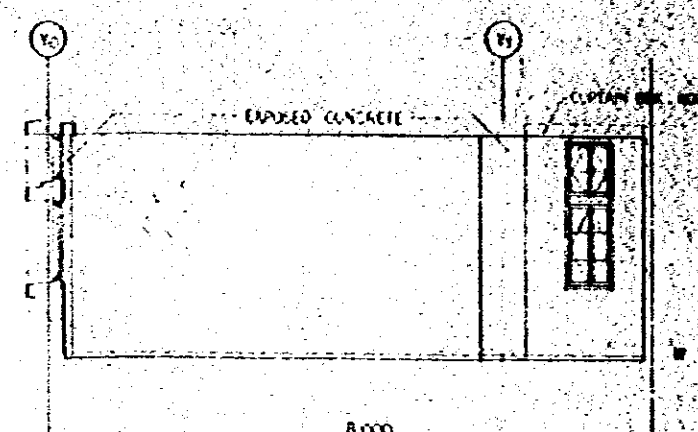
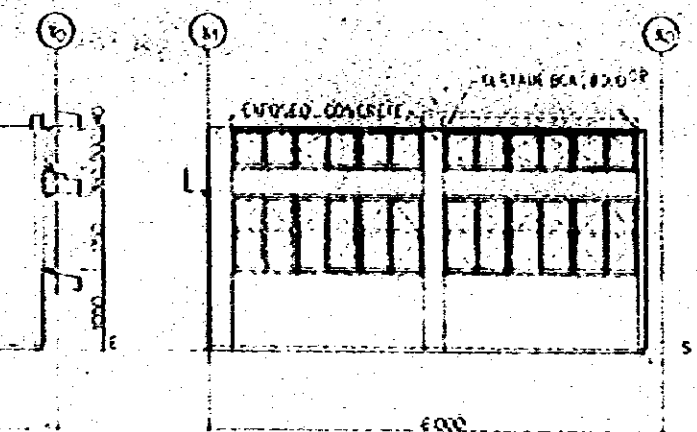
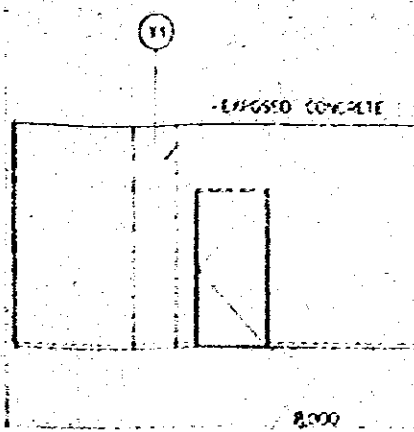
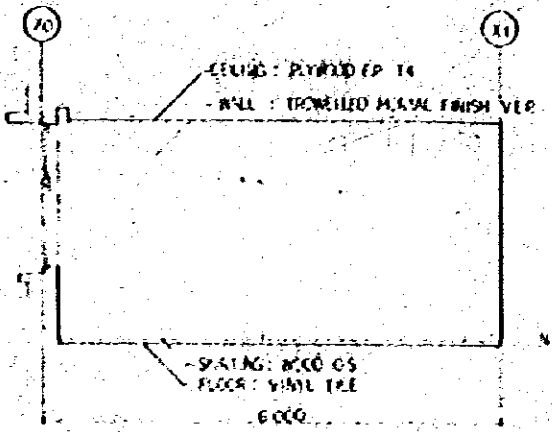
ENGINEER ROOM  
INTERIOR ELEVATION S-150



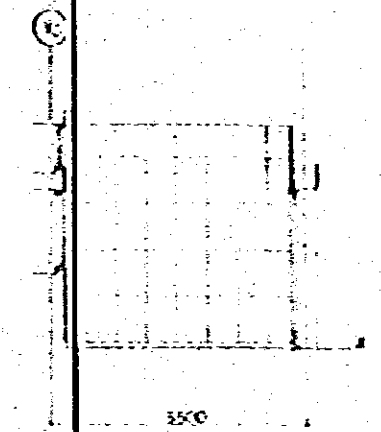
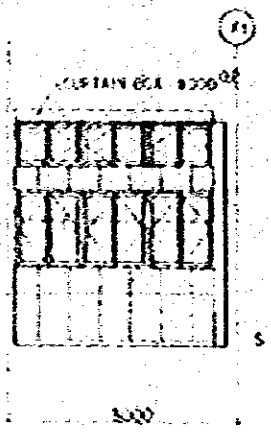
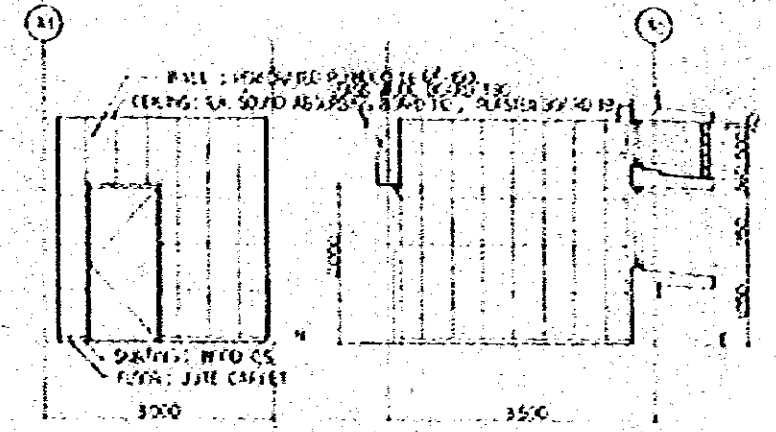
TELEX PRINTER ROOM  
INTERIOR ELEVATION S-150



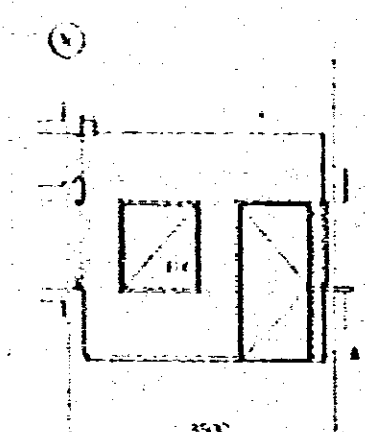
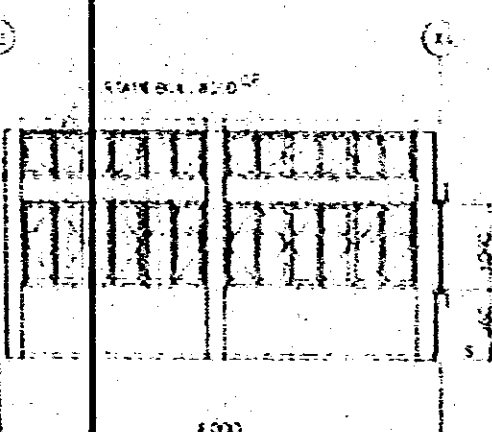
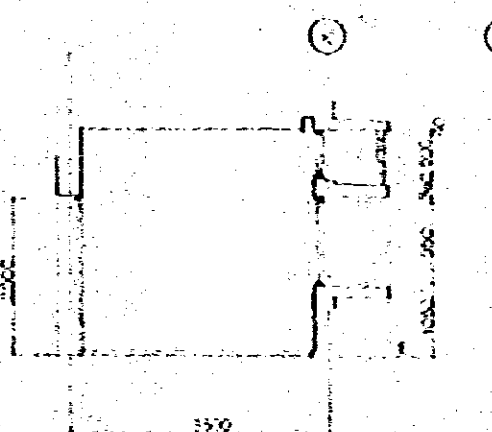
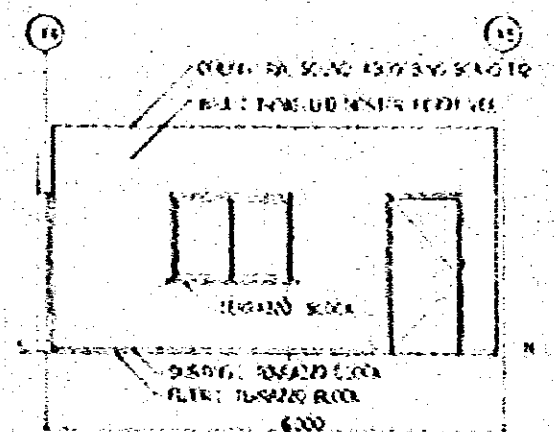
TAKE LIBRARY  
INTERIOR ELEVATION S-150

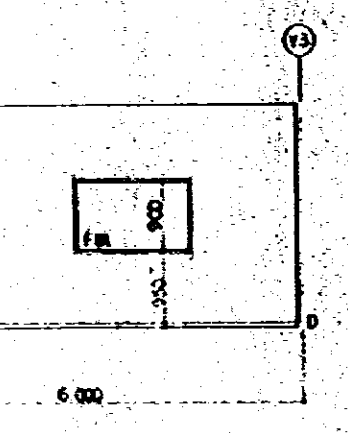
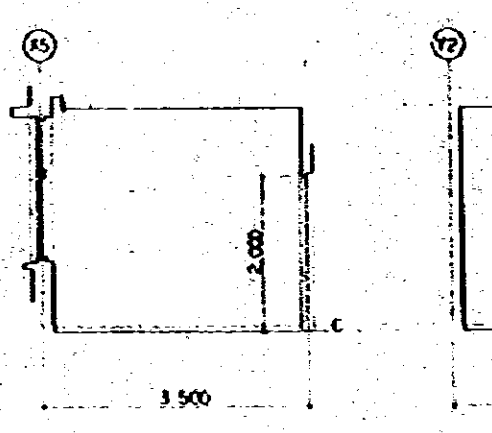
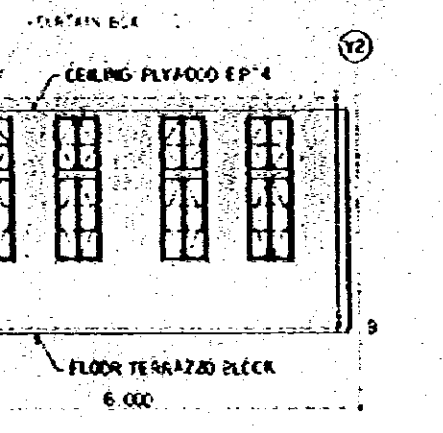
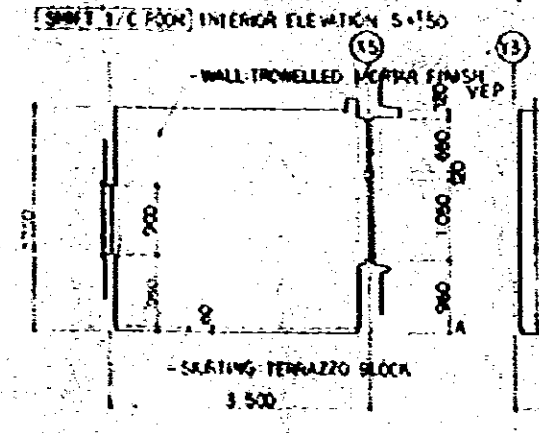
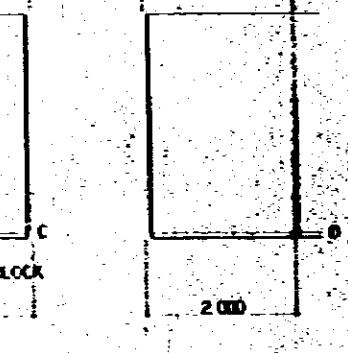
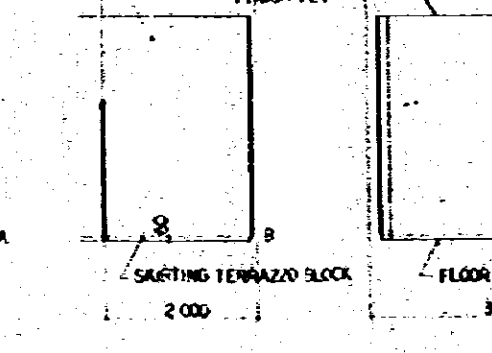
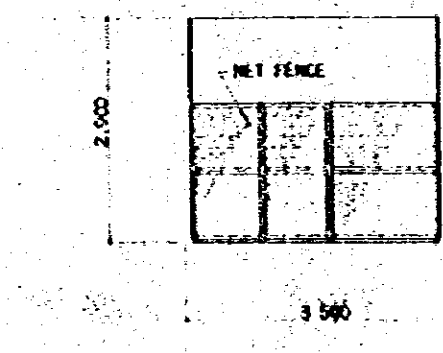
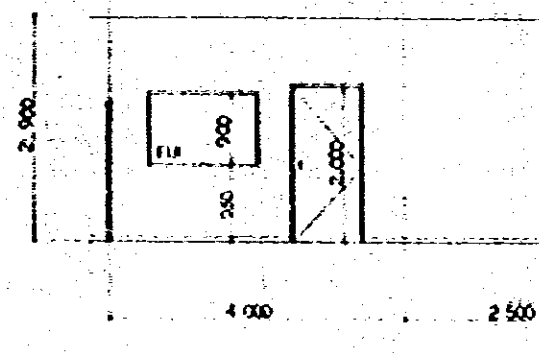
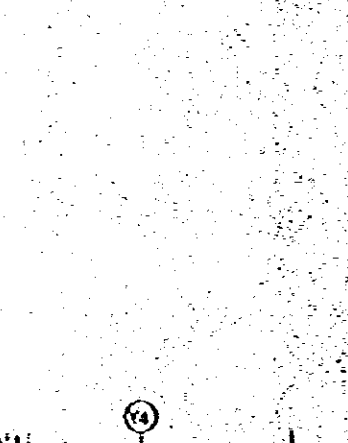
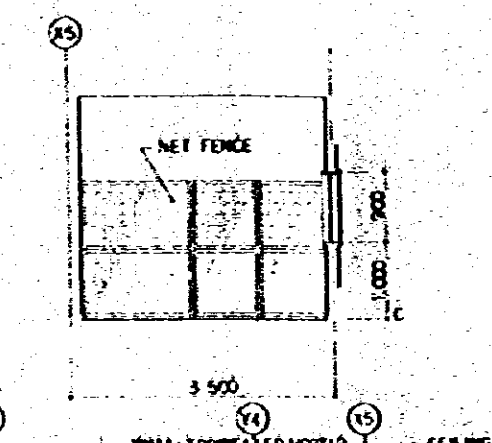
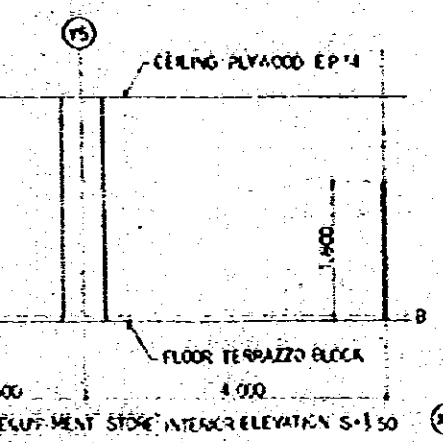
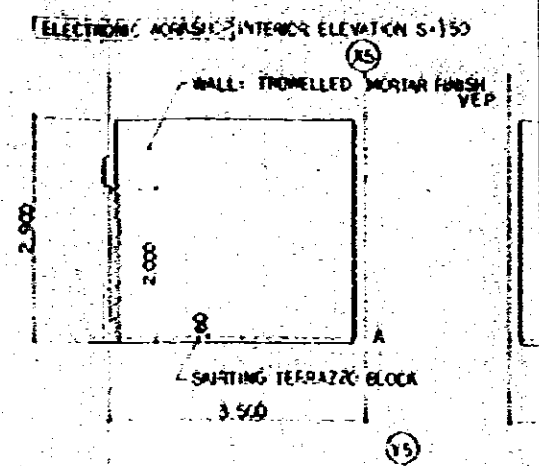
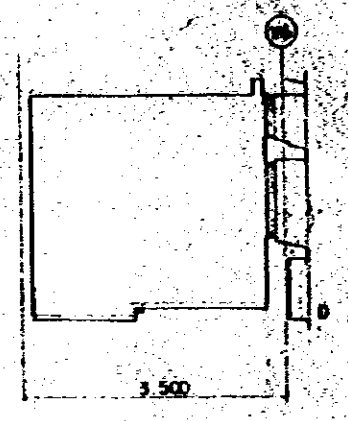
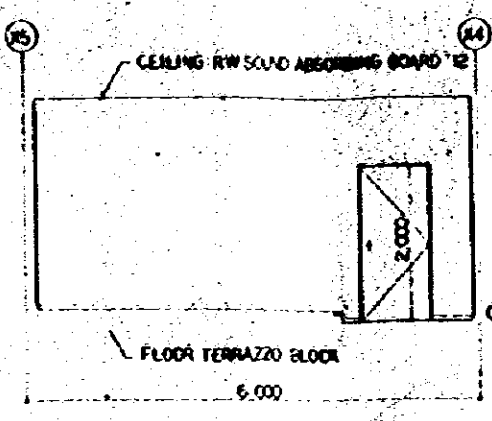
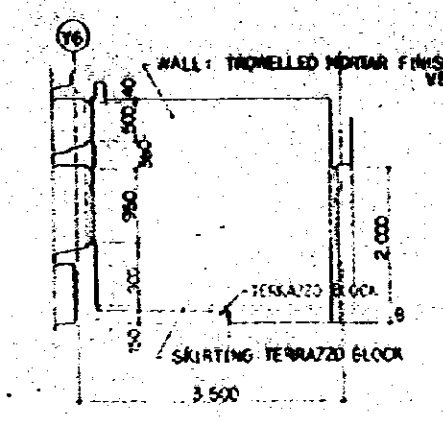
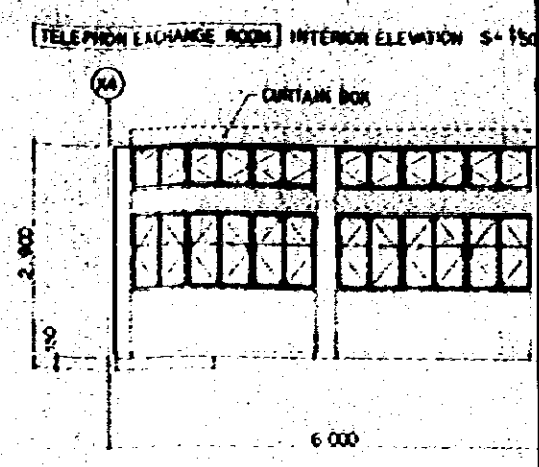
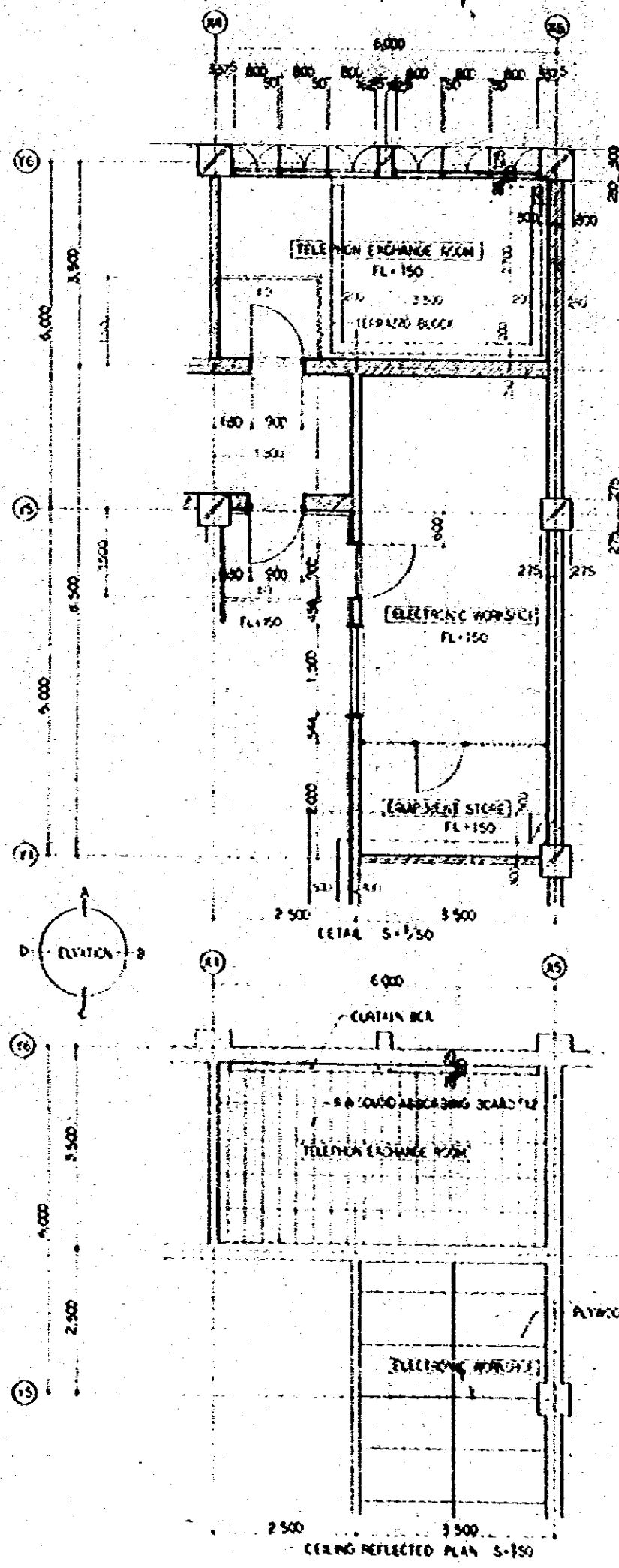


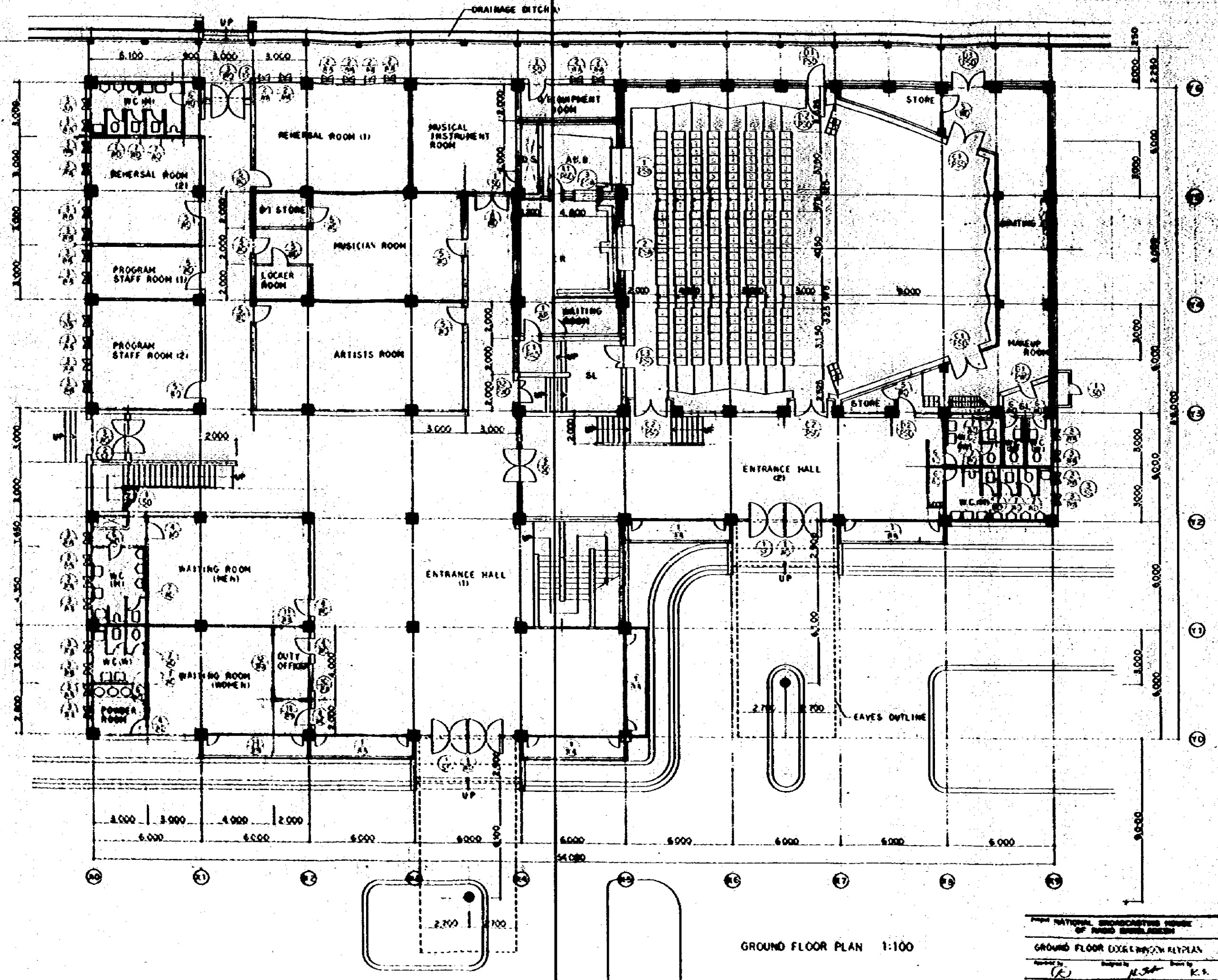
LOBBY WITH  
INTERIOR ELEVATION S-160



ENTRANCE ROOM  
INTERIOR ELEVATION S-170



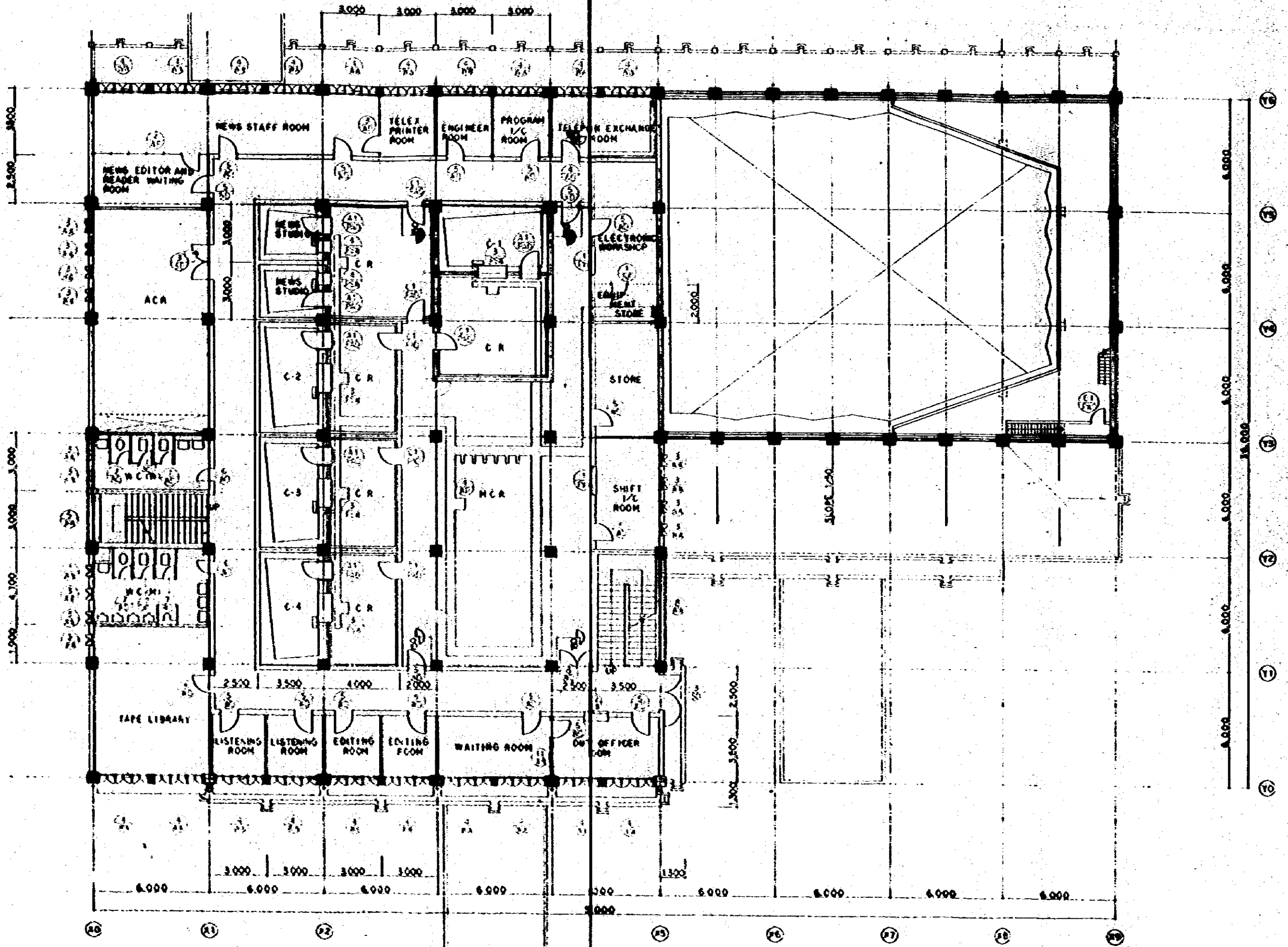




GROUND FLOOR PLAN 1:100

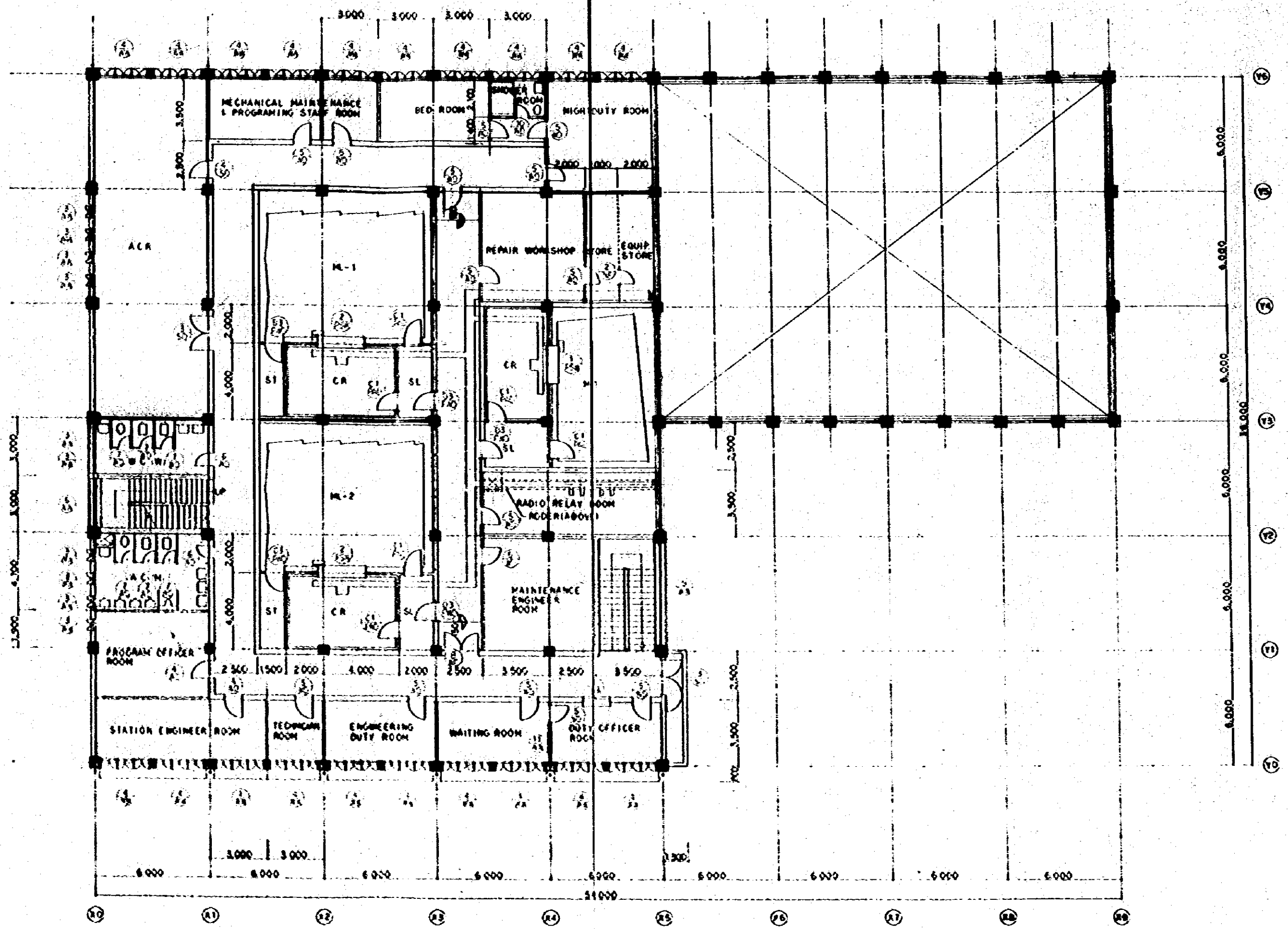
Project NATIONAL BROADCASTING HOUSE OF PUBLIC BROADCASTING	No. A-91-54
GROUND FLOOR LAYOUT ARCHITECTURAL PLAN	Scale 1:100
Designed by <i>(Signature)</i>	Checked by <i>(Signature)</i>
Drawn by <i>(Signature)</i>	Date FEB 38
J.E.C. JAPAN ENGINEERING CONSULTANTS CO., LTD.	





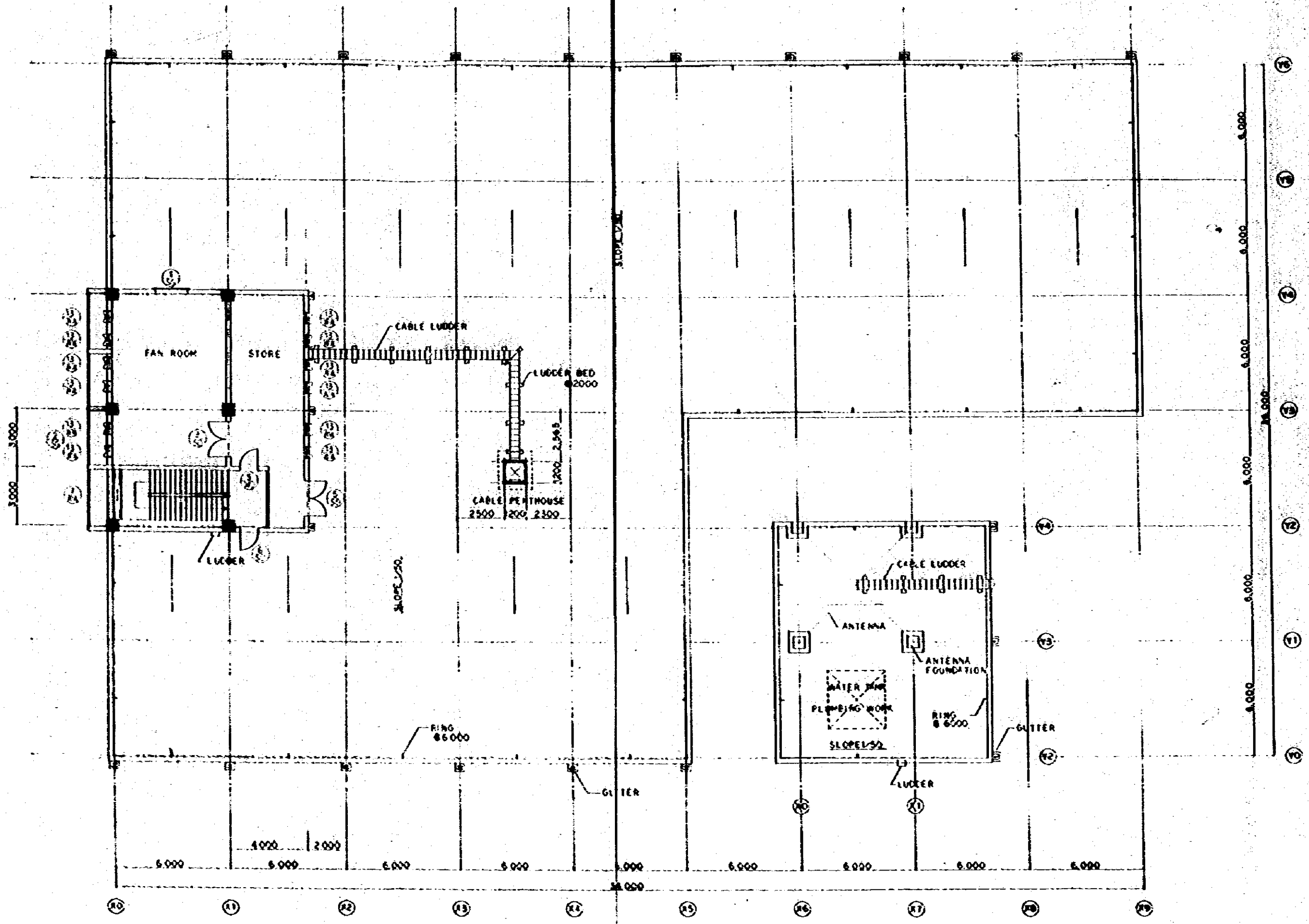
1ST FLOOR PLAN 1:100

Project NATIONAL BROADCASTING HOUSE OF RADIO BRUNEI		Drawn by A-01-85
1ST FLOOR ELECTRICAL PLAN		Scale 1:100
Approved by <i>[Signature]</i>	Designed by <i>[Signature]</i>	Drawn by <i>[Signature]</i>
JUNE JAPAN ENGINEERING CONSULTANTS CO., LTD.		FEB 1974



2ND FLOOR PLAN 1:100

Project	NATIONAL BROADCASTERS HOUSE OF RADIO BRNO	Drawn	A-01-56
Plan	2ND FLOOR DETAILED PLAN	Scale	1:100
Author	<i>[Signature]</i>	Checked	<i>[Signature]</i>
Date	1956	Sheet	1 of 3
J. V. B. ARCHITECTS & ENGINEERS CONSULTANTS CO., LTD.			

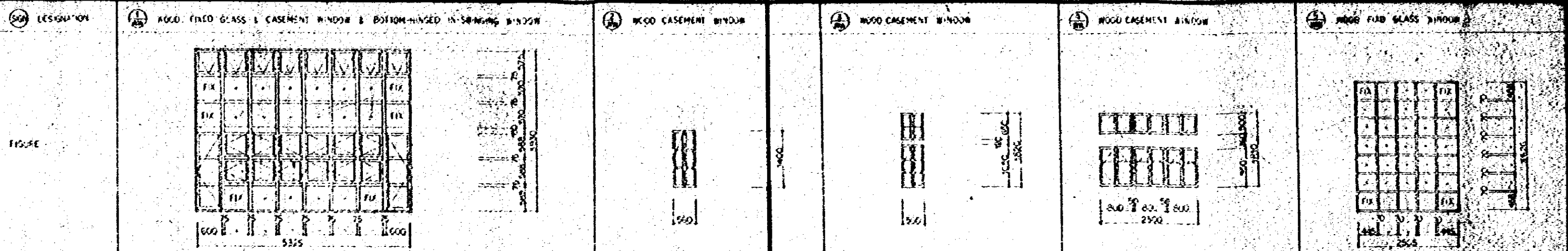


ROOF FLOOR PLAN 1:100

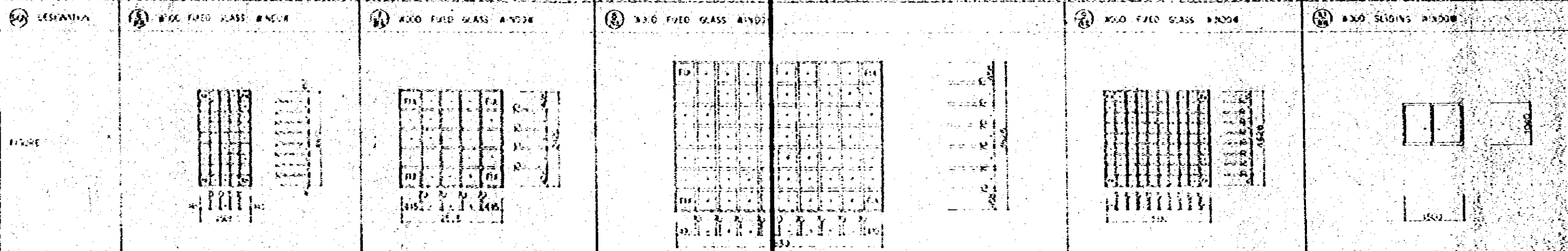
PENTHOUSE ROOF FLOOR PLAN 1:100

NATIONAL BROADCASTING HOUSE OF RADIO BROADCASTING		4-01-97
ROOF FLOOR	DOORINVOCA	Scale 1:100
PENTHOUSE ROOF FLOOR	FELPLAN	DATE FEB 1968
Drawn by	Checked by	Scale
J.E.C. JAPAN ENGINEERING CONSULTANTS CO., LTD.		

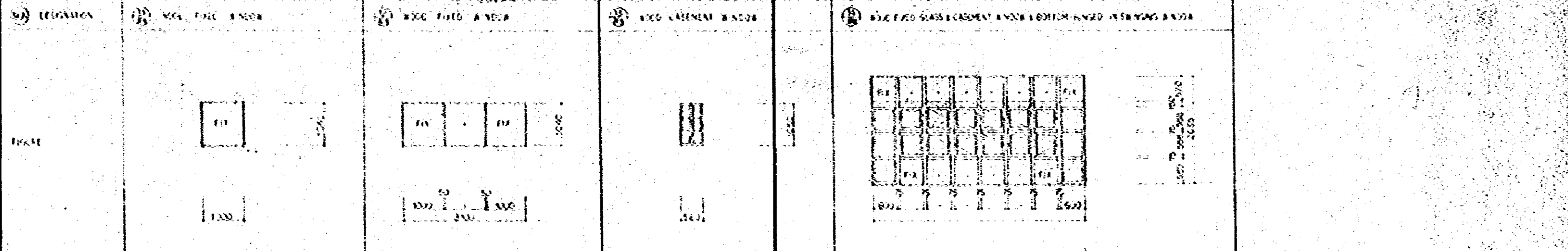
DESIGNATION	WOOD GLASS DOOR & FIXED GLASS WINDOW	WOOD GLASS DOOR	WOOD GLASS DOOR	VENEERED FLUSH DOOR	VENEERED FLUSH DOOR	
FIGURE						
NUMBER	2	40	40	2	40	
GLASS	WIRE TRANSPARENT GLASS 16B	CP	WIRE TRANSPARENT GLASS 16B	CP	WIRE TRANSPARENT GLASS 16B	
HARDWARE	FLOOR HINGE, CYLINDRICAL LOCK, STAINLESS STEEL PUSH BAR, FULL BAR	FLAME-100	SAME AS LEFT	SAME AS LEFT	SAME AS LEFT	
REMARKS						
DESIGNATION	VENEERED FLUSH DOOR	VENEERED FLUSH DOOR	VENEERED FLUSH DOOR	WIRE FLUSH DOOR	VENEERED FLUSH DOOR	STEEL GATE
FIGURE						
NUMBER	11	35	21	35	3	35
GLASS	OPAZE GLASS 15	PLYWOOD CP	PLYWOOD CP	PLYWOOD CP	PERFORATED PLYWOOD CP	PERFORATED PLYWOOD CP
HARDWARE	HINGE EC, STAINLESS STEEL PUSH BAR	FLAME EC, STAINLESS STEEL PUSH BAR	FLAME EC, STAINLESS STEEL PUSH BAR	FLAME EC, STAINLESS STEEL PUSH BAR	FLAME EC, STAINLESS STEEL PUSH BAR	FLAME EC, STAINLESS STEEL PUSH BAR
REMARKS	FRAME ALUMINUM VENTILATION LOCKER ALUMINUM FIRE AREA 50%	FRAME ALUMINUM VENTILATION LOCKER ALUMINUM FIRE AREA 50%	FRAME ALUMINUM VENTILATION LOCKER ALUMINUM FIRE AREA 50%	FRAME ALUMINUM VENTILATION LOCKER ALUMINUM FIRE AREA 50%	FRAME ALUMINUM VENTILATION LOCKER ALUMINUM FIRE AREA 50%	FRAME ALUMINUM VENTILATION LOCKER ALUMINUM FIRE AREA 50%
DESIGNATION	STEEL GATE	STEEL FOLDING DOOR	STEEL FOLDING DOOR	STEEL FOLDING DOOR	STEEL FOLDING DOOR	
FIGURE						
NUMBER	1	50	50	50	50	
GLASS	CP	CP	CP	CP	CP	
HARDWARE		CYLINDER LOCK, RAIL, HINGE, FULL BAR	CYLINDER LOCK, RAIL, HINGE, FULL BAR	CYLINDER LOCK, RAIL, HINGE, FULL BAR	CYLINDER LOCK, RAIL, HINGE, FULL BAR	
REMARKS		FLAME EC, STAINLESS STEEL PUSH BAR	FLAME EC, STAINLESS STEEL PUSH BAR	FLAME EC, STAINLESS STEEL PUSH BAR	FLAME EC, STAINLESS STEEL PUSH BAR	



NUMBER	FINISH	5	100	8	43	43	40	40	40	40	1	100
GLASS	FINISH	WIRED TRANSPARENT GLASS T&B	CP	WIRED OPQUE GLASS T&B	CP	WIRED OPQUE GLASS T&B	CP	WIRED OPQUE GLASS T&B	CP	WIRED OPQUE GLASS T&B	WIRED TRANSPARENT GLASS T&B	CP
HANGING		H/MS TRANSM CATCH CASEMENT KEEPER CASEMENT FASTENERS TRANSOM CATCH		H/MS CASEMENT FASTENERS CASEMENT W/LOCK BARREL EXT		SAME AS LEFT		SAME AS LEFT				
REMARKS												



NUMBER	FINISH	7	100	8	100	9	100	10	100	11	40	
GLASS	FINISH	WIRED TRANSPARENT GLASS T&B	CP	WIRED TRANSPARENT GLASS T&B	CP	WIRED TRANSPARENT GLASS T&B	CP	WIRED TRANSPARENT GLASS T&B	CP	WIRED TRANSPARENT GLASS T&B	TRANSPARENT GLASS T&B	CP
HANGING												CRECENT
REMARKS												



NUMBER	FINISH	12	100	13	100	14	100
GLASS	FINISH	TRANSPARENT GLASS T&B	CP	TRANSPARENT GLASS T&B	CP	WIRED TRANSPARENT GLASS T&B	CP
HANGING				H/MS CASEMENT FASTENERS CASEMENT KEEPER BARREL EXT		H/MS TRANSM CATCH CASEMENT FASTENERS	
REMARKS							

DESIGNATION	WOOD FIXED GLASS PARTITION & FLUSH DOOR		WOOD FIXED GLASS PARTITION & FLUSH DOOR		WOOD FIXED GLASS PARTITION & FLUSH DOOR		WOOD FIXED GLASS PARTITION & FLUSH DOOR		
NUMBER	THICKNESS	1	60	1	60	1	60	1	60
GLASS	FINISH	TRANSPARENT GLASS IS		GRADE GLASS IS		GRADE GLASS IS		GRADE GLASS IS	
PACKAGE		AND CYLINDER LOCK HINGE CC		SAME AS LEFT		SAME AS LEFT		SAME AS LEFT	
REMARKS									

DESIGNATION	NET FENCE		NET FENCE		STEEL FLUSH DOOR		STEEL FLUSH DOOR		
NUMBER	THICKNESS	1	60	1	50	3	65 FLAME-100	1	65 FLAME-100
GLASS	FINISH	CP		CP		CP		CP	
PACKAGE		HINGE CASEMENT FASTENERS RUSH & STAPLE FAC LOCK		SAME AS LEFT		ANGLE CYLINDER LOCK HINGE		CYLINDER LOCK FLOOR HINGE STAINLESS FLUSH ESC. PULL BAR	
REMARKS									

DESIGNATION	STEEL FLUSH DOOR		STEEL FLUSH DOOR		STEEL FLUSH DOOR		STEEL FLUSH DOOR		
NUMBER	THICKNESS	5	65 FLAME-100	1	65 FLAME-100	1	65 FLAME-100	1	65 FLAME-100
GLASS	FINISH	CP		CP		CP		CP	
PACKAGE		ANGLE CYLINDER LOCK HINGE FLUSH EXT CC		ANGLE CYLINDER LOCK HINGE CC		ANGLE CYLINDER LOCK HINGE CC		SAME AS LEFT	
REMARKS									

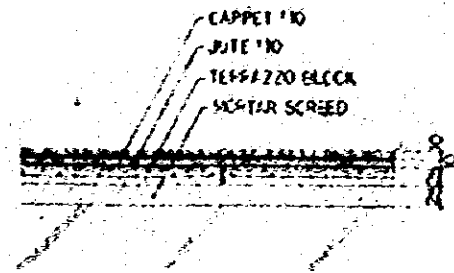
NATIONAL BROADCASTING HOUSE OF JAPAN BANGALORE  
 00000000000000000000  
 JEP JAPAN ENGINEERING CONSULTANTS CO., LTD.

DESIGNATION	SOUND PROOF DOOR	SOUND PROOF DOOR	SOUND PROOF DOOR	SOUND PROOF DOOR	SOUND PROOF DOOR	SOUND PROOF DOOR	SOUND PROOF DOOR
FIGURE							
NUMBER	2	2	1	1	1	2	1
GLASS	TRANSPARENT GLASS 16+16	TRANSPARENT GLASS 16+16	TRANSPARENT GLASS 16+16	TRANSPARENT GLASS 16+16	TRANSPARENT GLASS 16+16	TRANSPARENT GLASS 16+16	TRANSPARENT GLASS 16+16
FINISH	STEEL VINYL CLUTH	STEEL VINYL CLUTH	STEEL VINYL C	STEEL VINYL C	STEEL CL	STEEL VINYL CLUTH	STEEL SP
HARDWARE	NO 2470 150-2	NO 2470 150-2	NO 2470 150-2	NO 2470 150-2	NO 2470 NO 1184	NO 2470 150-2	NO 2470 NO 1184
REMARKS	C TYPE	C TYPE	C TYPE	C TYPE	D TYPE	D TYPE	D TYPE
DESIGNATION	SOUND PROOF DOOR	SOUND PROOF DOOR	SOUND PROOF DOOR	SOUND PROOF DOOR	SOUND PROOF DOOR		
FIGURE							
NUMBER	1	1	2	2	1	5	
GLASS	TRANSPARENT GLASS 16+16	TRANSPARENT GLASS 16+16	TRANSPARENT GLASS 16+16	TRANSPARENT GLASS 16+16	TRANSPARENT GLASS 16+16	TRANSPARENT GLASS 16+16	
FINISH	ALUMINA	ALUMINA	FLUORIN	FLUORIN	FLUORIN CP	FLUORIN CP	
HARDWARE	NO 2470 NO 1184	NO 2470 NO 1184	NO 2470 NO 1184 DOOR CHECK	NO 2470 NO 1184 DOOR CHECK	NO 2470 NO 1184 DOOR CHECK	NO 2470 NO 1184 DOOR CHECK	
REMARKS							
DESIGNATION	SOUND PROOF WINDOW	SOUND PROOF WINDOW	SOUND PROOF WINDOW	SOUND PROOF WINDOW	SOUND PROOF WINDOW		
FIGURE							
NUMBER	2	2	2	2	5	2	
GLASS	TRANSPARENT GLASS 16+16	TRANSPARENT GLASS 16+16+16	TRANSPARENT GLASS 16+16	TRANSPARENT GLASS 16+16	TRANSPARENT GLASS 16+16	TRANSPARENT GLASS 16+16	
FINISH	WAS DOF	STEEL CP	STEEL CP	STEEL CP	STEEL CP	STEEL CP	
HARDWARE							
REMARKS	C TYPE	A TYPE	B TYPE	B TYPE	B TYPE	B TYPE	

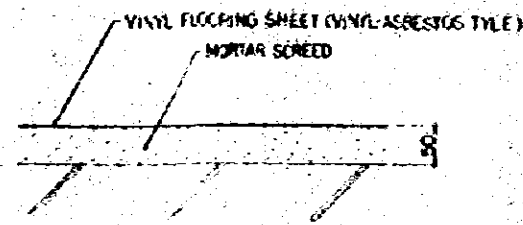
NATIONAL BROADCASTING HOUSE OF RADIO BROADCASTING  
 COOPERATION SCHEME  
 1950  
 FEB 1951  
 JAPAN ENGINEERING CONSULTANTS CO., LTD.

STANDARD DETAIL OF FLOORS

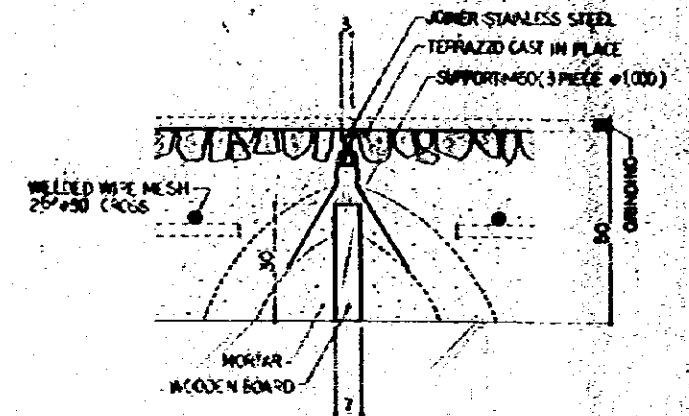
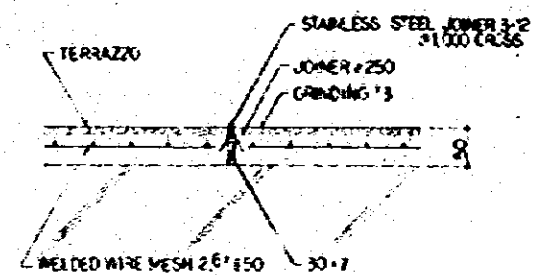
CARPET



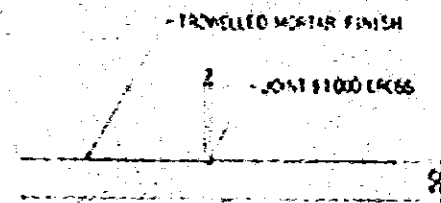
VINYL FLOORING SHEET (VINYL-ASBESTOS TILE)



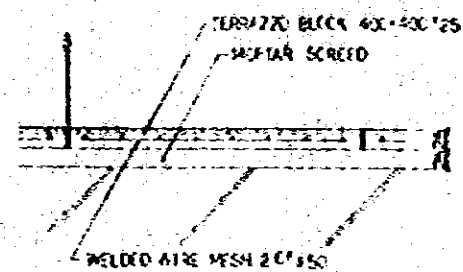
TERRAZZO CAST IN PLACE



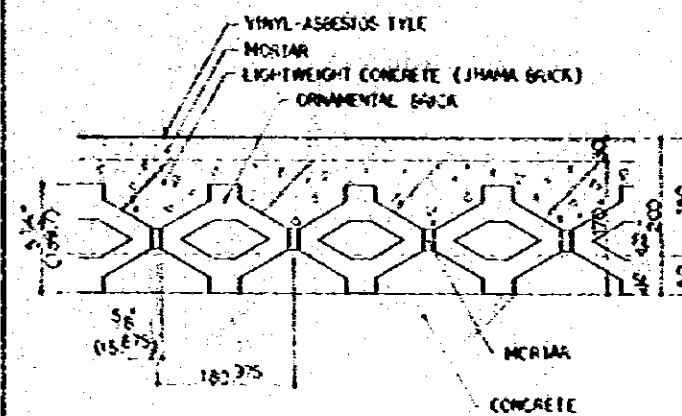
TROWELLED MORTAR FINISH



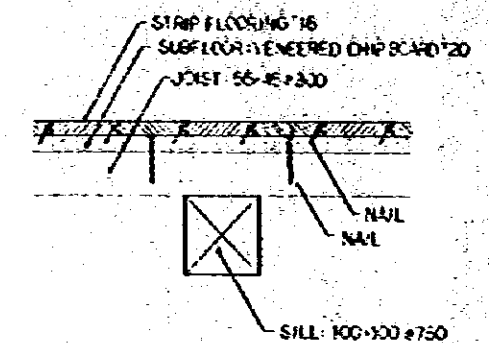
TERRAZZO BLOCK



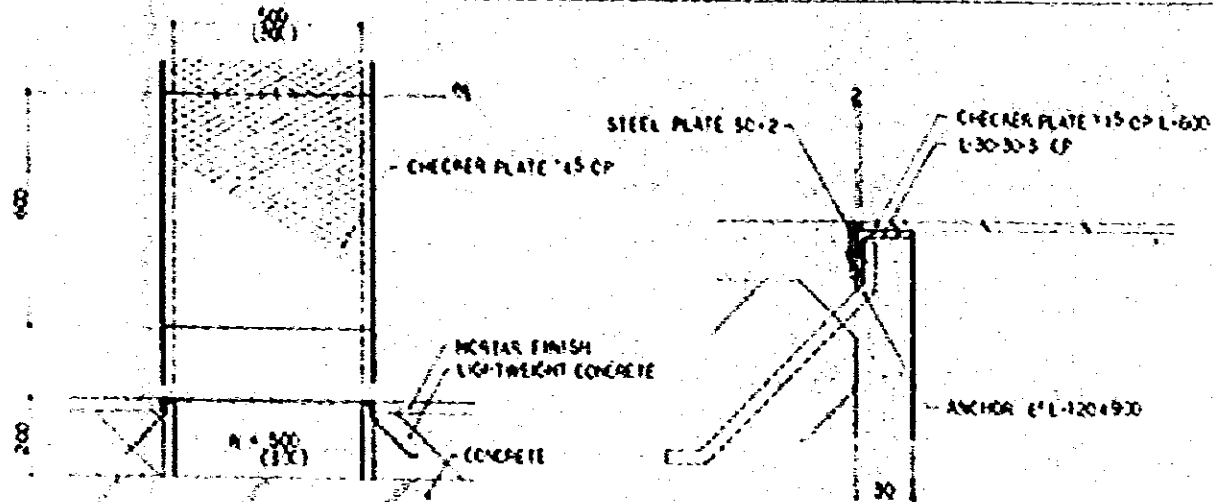
LIGHTWEIGHT CONCRETE



STRIP FLOORING



CAELE FIT

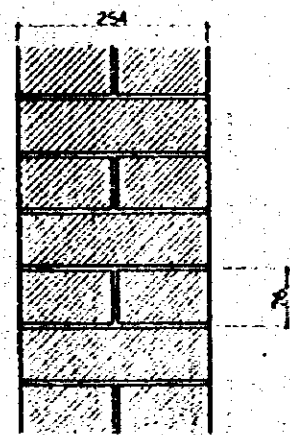




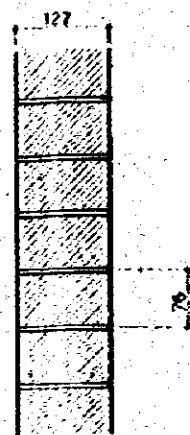


STANDARD DETAIL OF WALLS

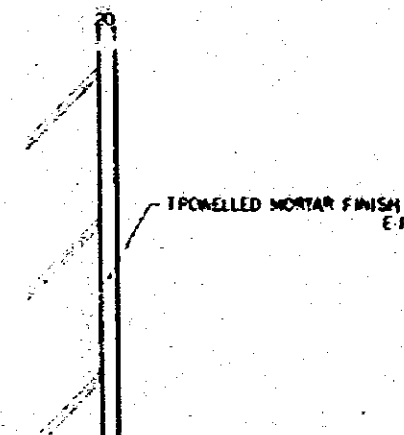
BRICK



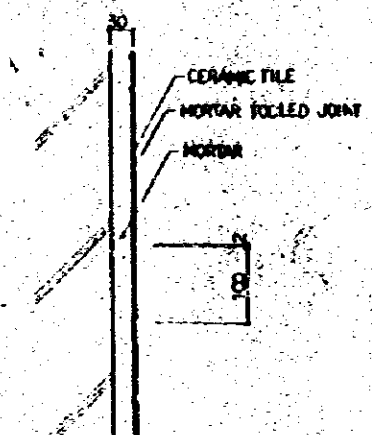
BRICK



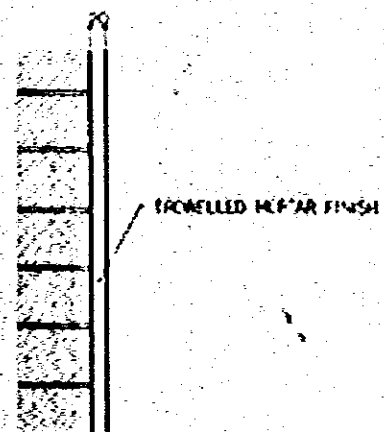
MORTAR EP



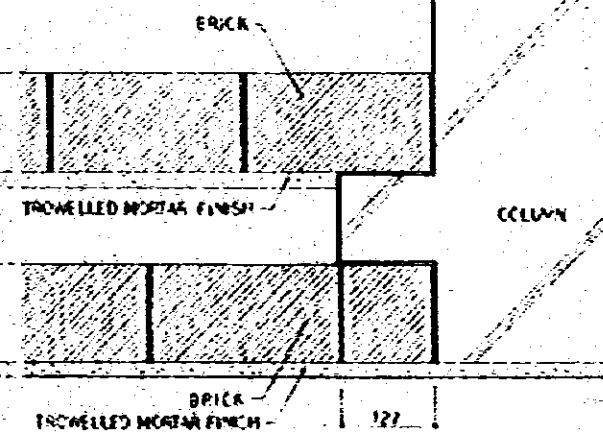
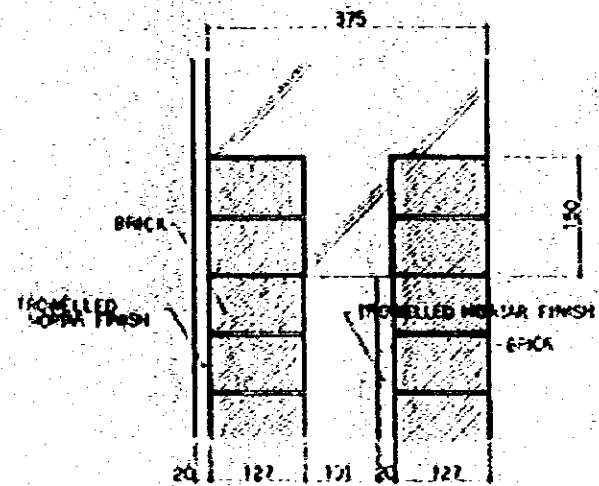
CERAMIC TILE



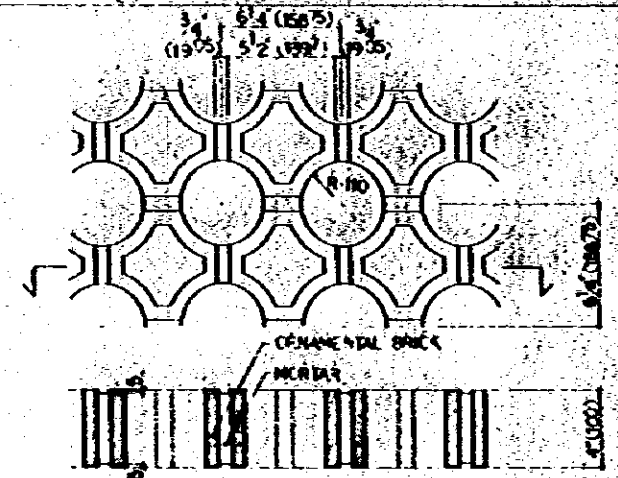
BRICK MORTAR



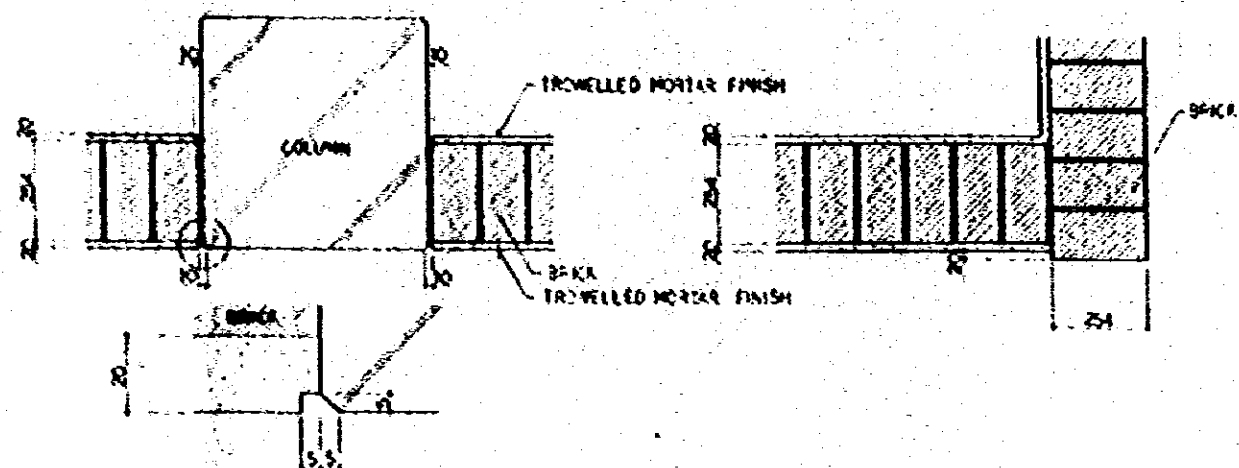
BRICK-BRICK MORTAR



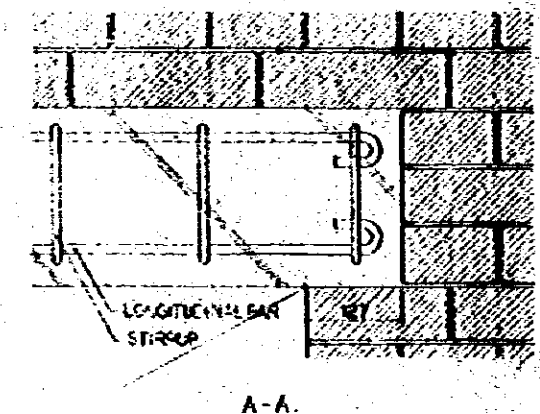
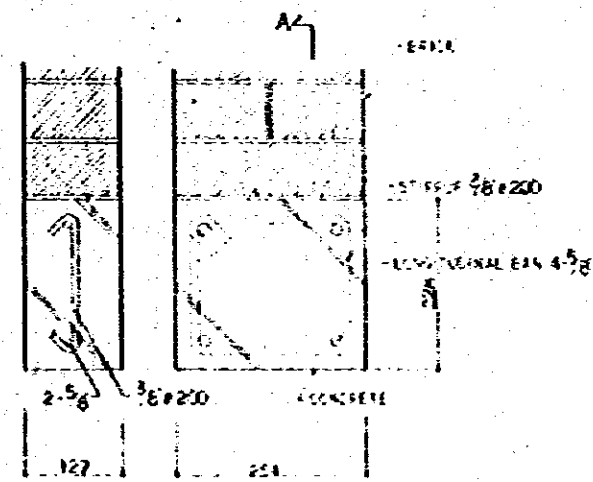
ORNAMENTAL BRICK



BRICK MORTAR



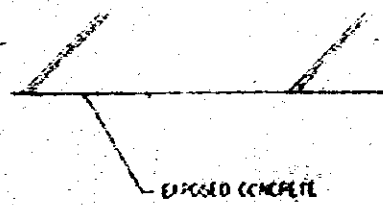
HEAD



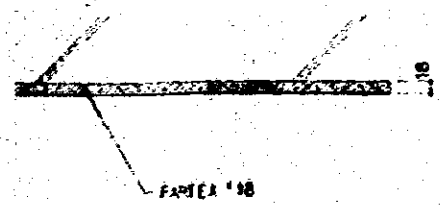
A-A

STANDARD DETAIL OF CEILING

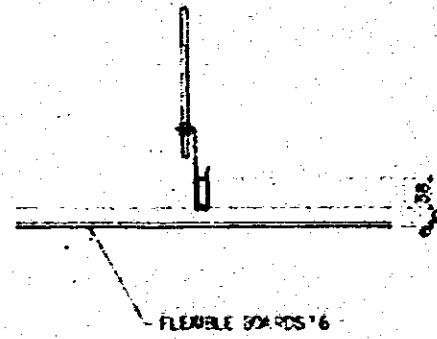
EXPOSED CONCRETE



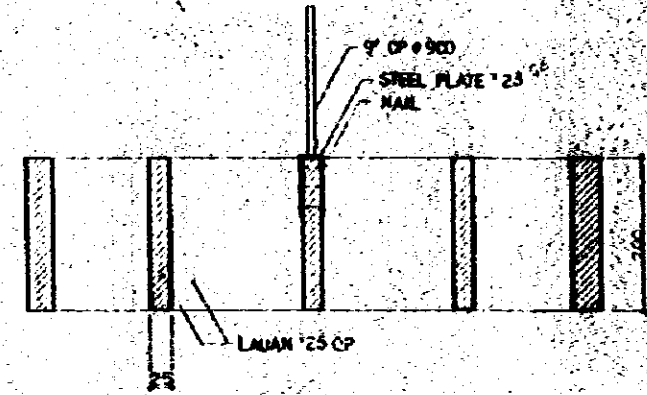
PARTEX



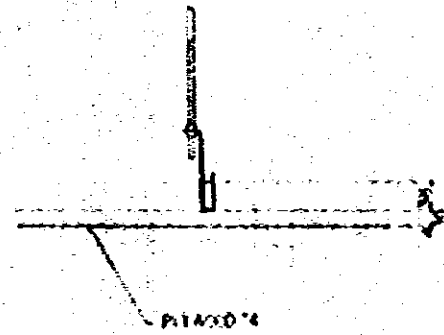
FLEXIBLE BOARDS



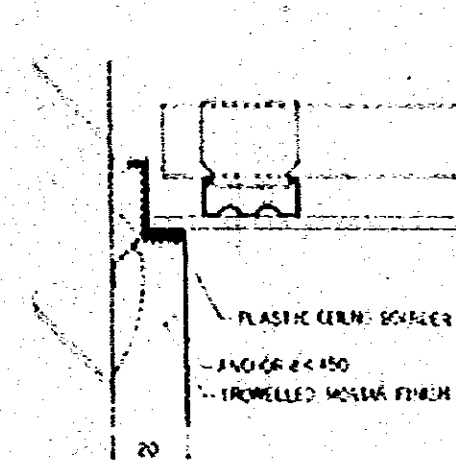
WOOD LOUVER



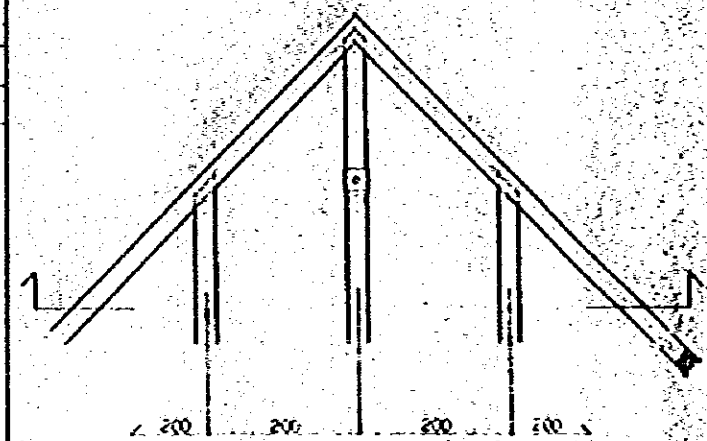
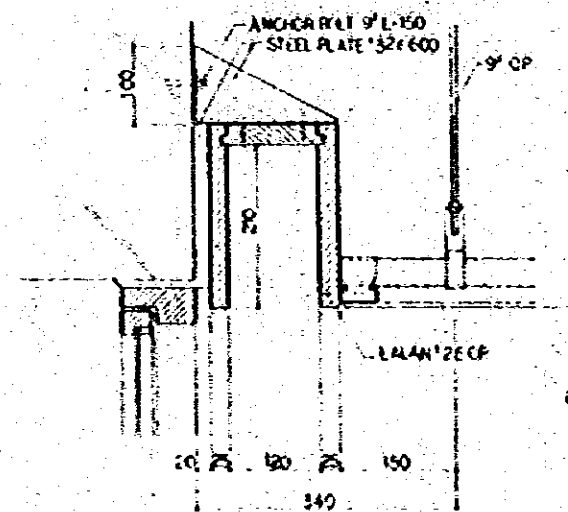
PLYWOOD EP



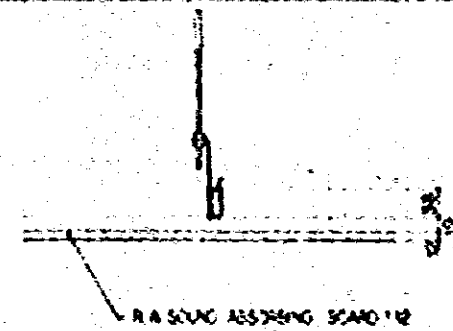
CEILING BOFFICE



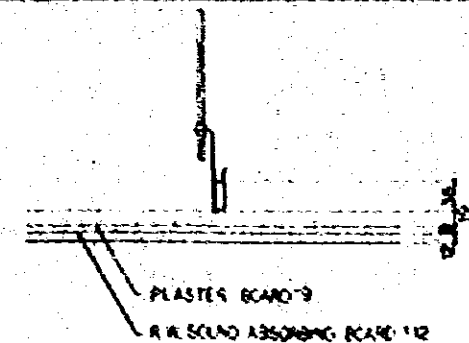
CURTAIN BOX



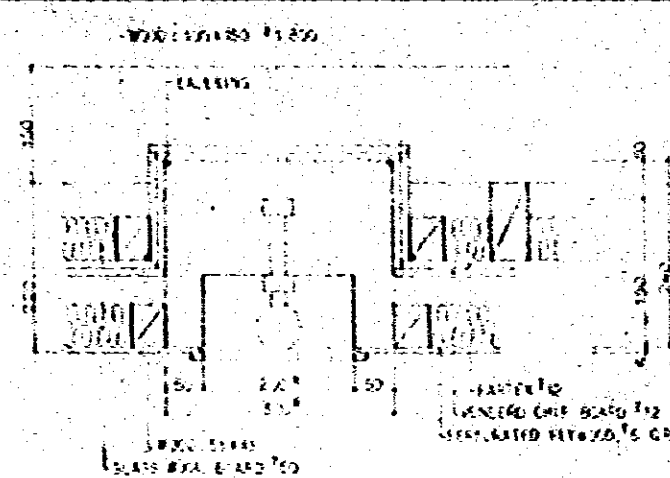
R.W. SOUND ABSORBING BOARD



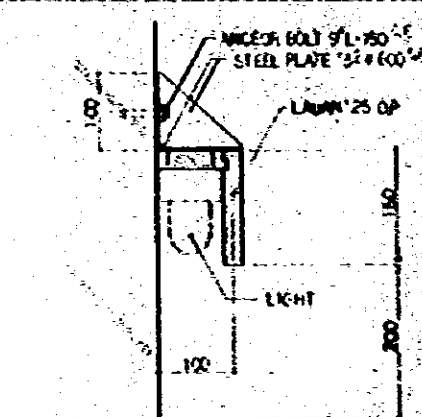
PLASTER BOARD - R.W. SOUND ABSORBING BOARD



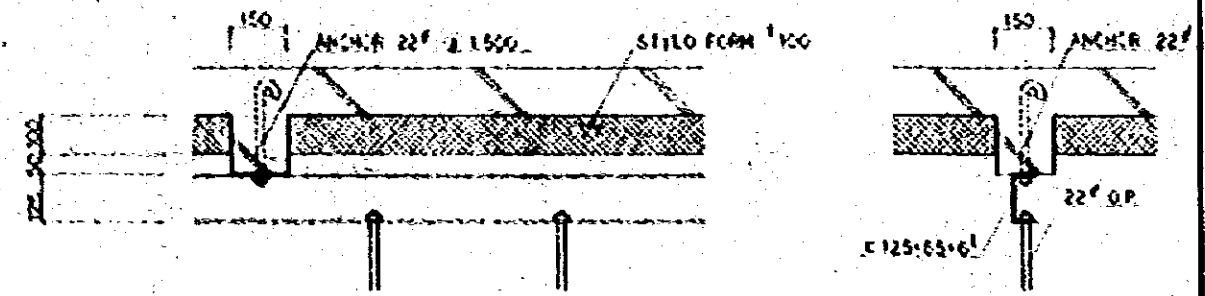
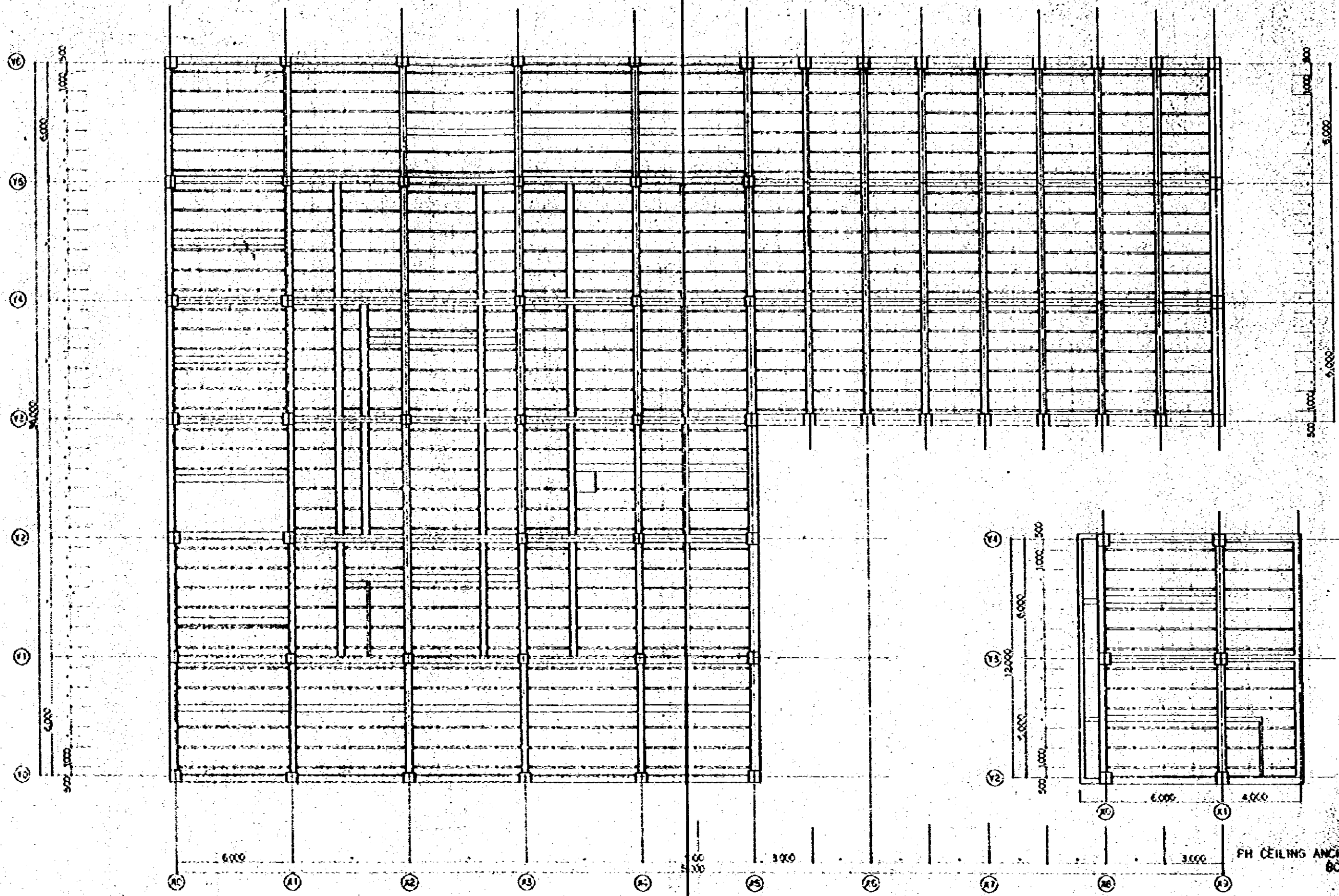
LIGHT BOX



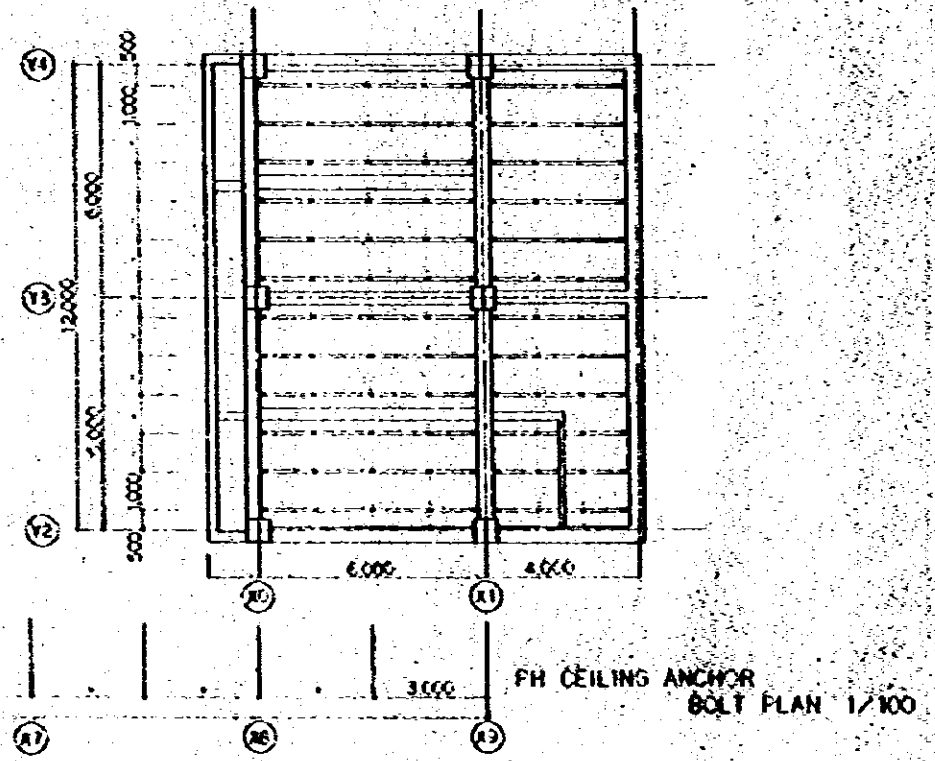
LIGHT BOX (ENTRANCE HALL)



ANCHOR BOLT	2	P.C.S.
NEED STUDS	2	"
EIGHT WAY STUDS - 1	2	"
" - 2	2	"
" - 3	2	"
" - 1	2	"
TECHN. LAMP STUDS - 1	16	"
" - 2	16	"
MEDIUM STUDS - 1	5	"

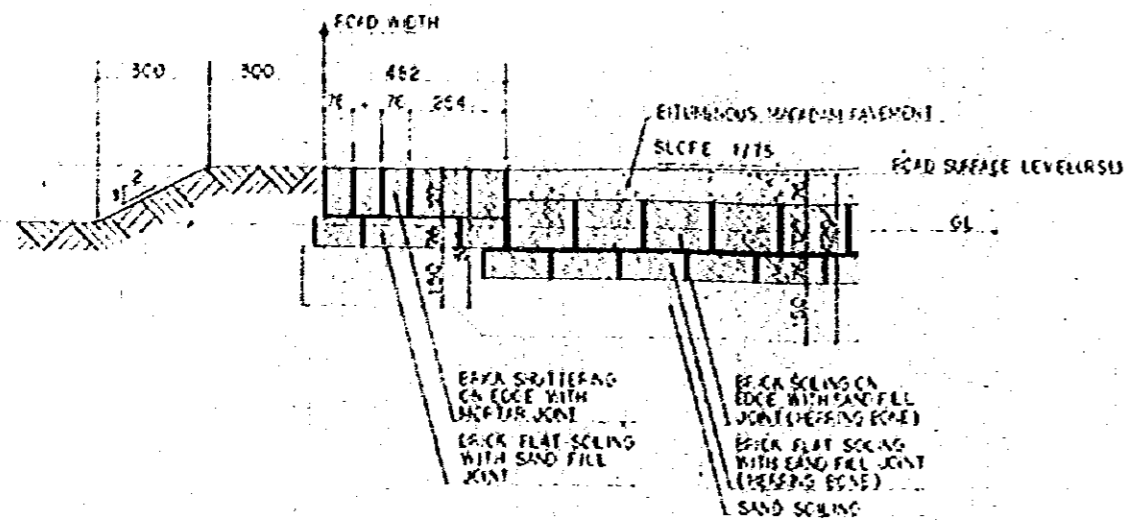


SECTION DETAIL 1/10

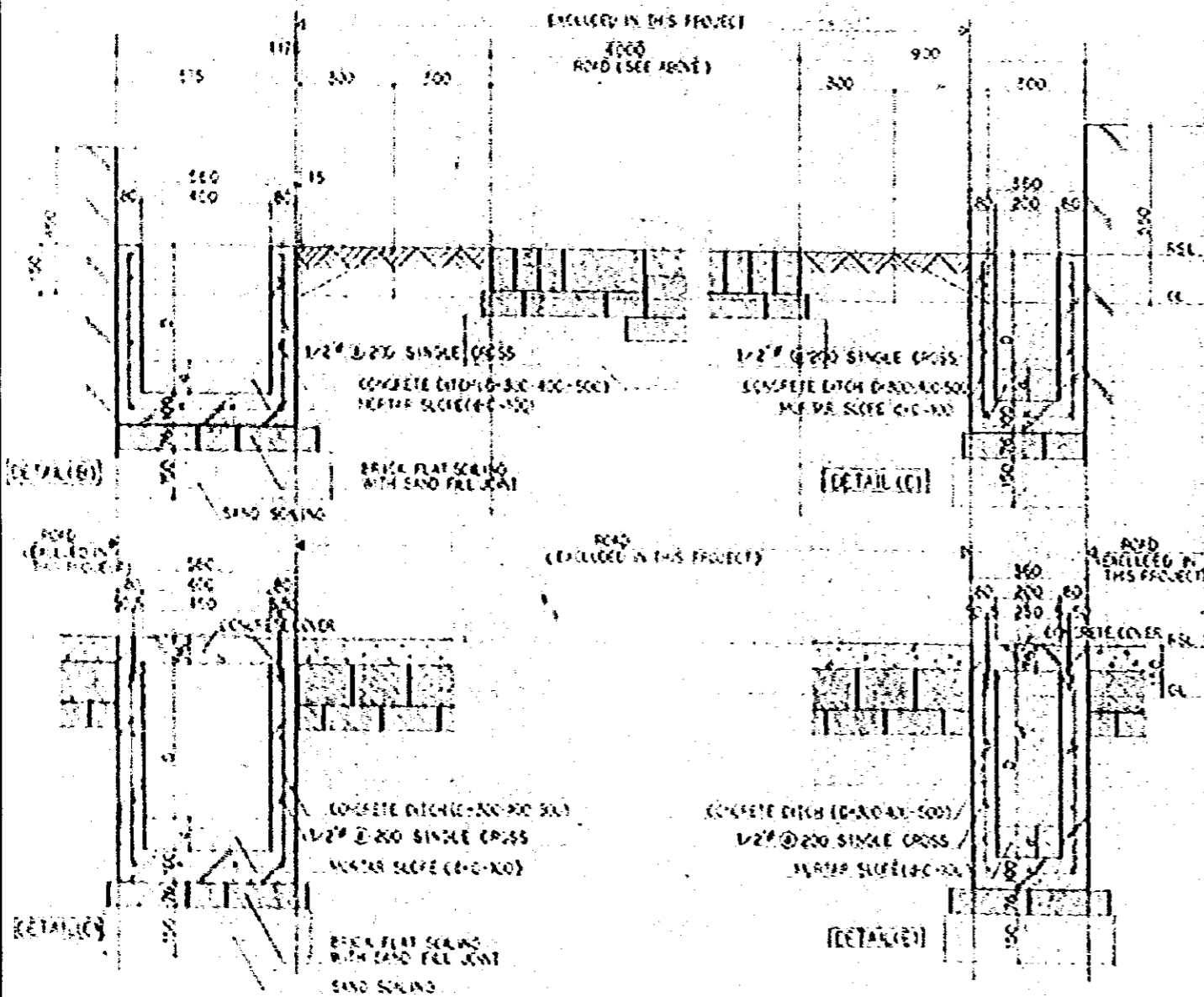


Project		A-01-66
CEILING ANCHOR BOLT PLAN		1:100
Approved by	Designed by	Checked by
JEC		JEP
JEC JAPAN ENGINEERING CONSULTANTS CO., LTD.		





**ROAD SECTION 1/10 (DETAIL A)**  
 REMARKS: ROAD CONSTRUCTION SHALL NOT BE INCLUDED IN THIS PROJECT

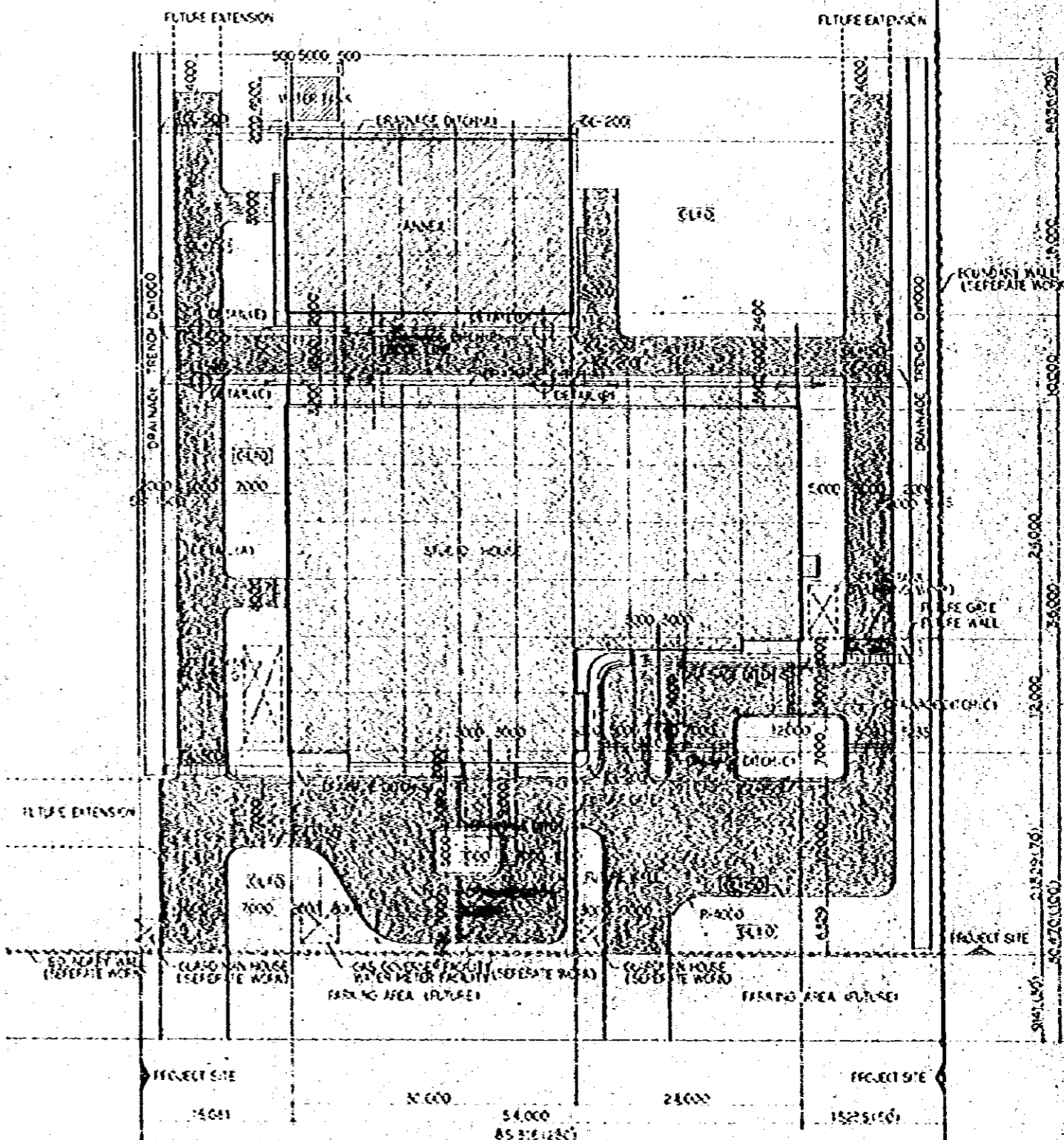


**[DRAINAGE DITCH (BY 1/10)]**

**[DRAINAGE DITCH (BY 1/10)]**

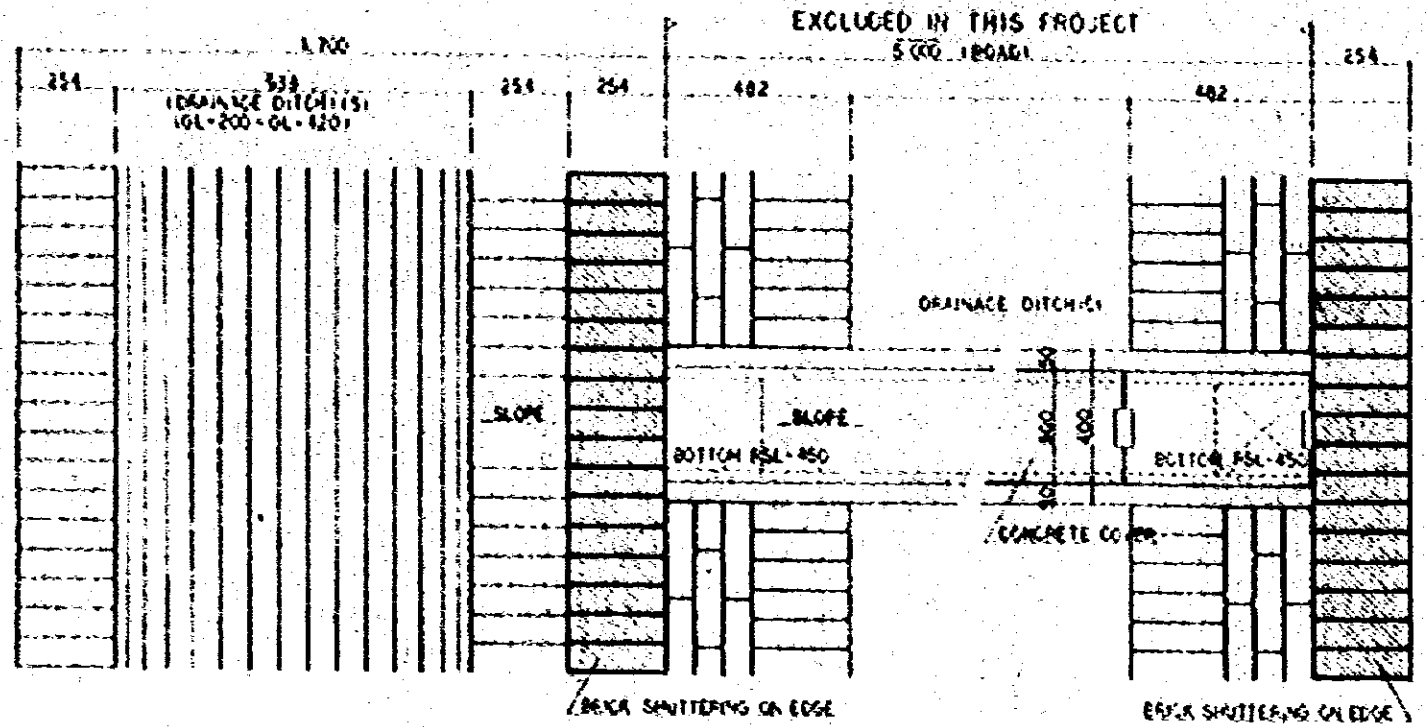
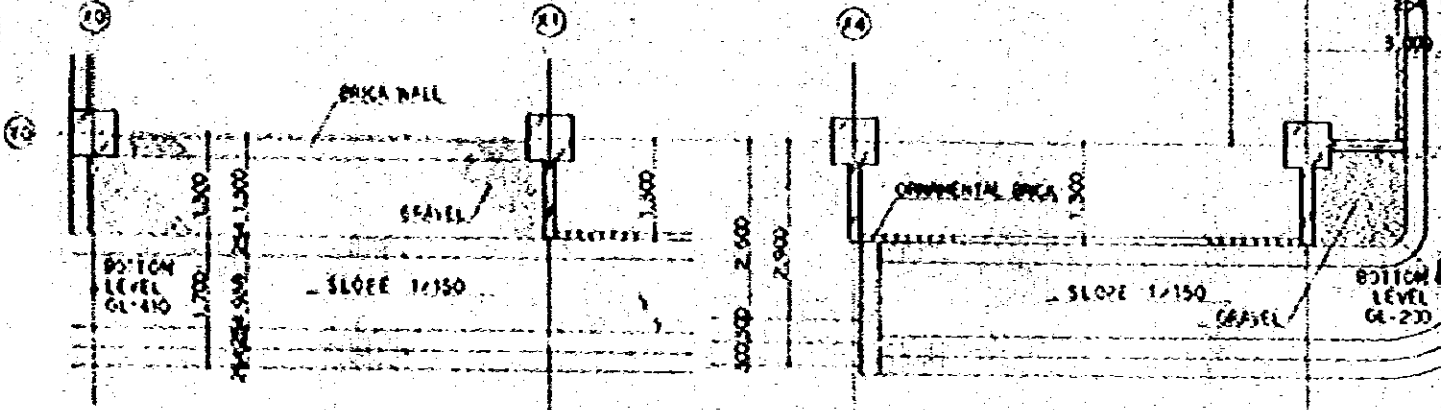
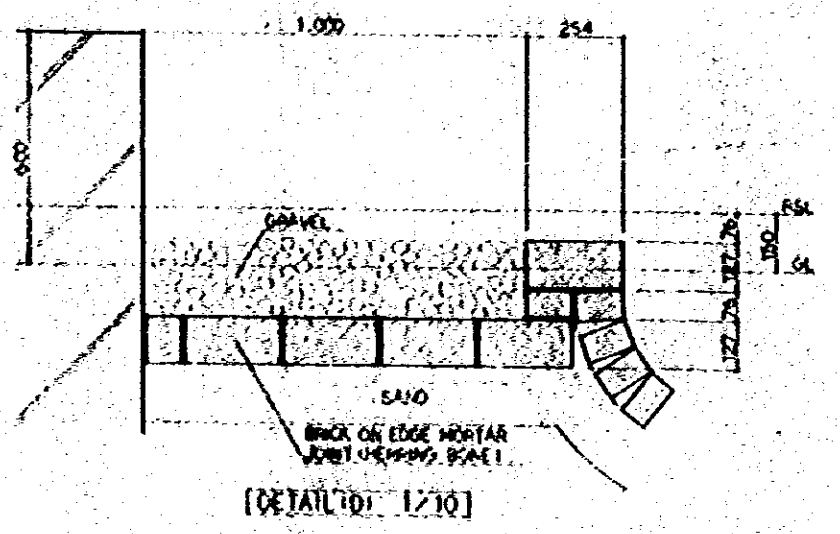
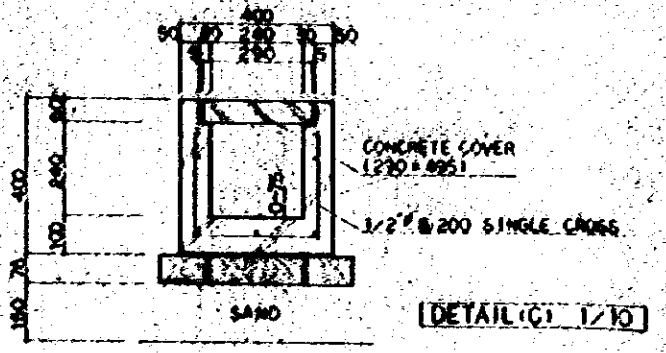
**REMARKS**

- 1) [ ] SHOWS FOUNDS, WHICH SHALL NOT BE INCLUDED IN THIS PROJECT.
- 2) [ ] SHOWS DRAINAGE DITCH WITH CONCRETE COVER.
- 3) CL SHALL BE FORMATION LEVEL (24'55").  
 ROAD SURFACE LEVEL (RSL) = CL - 150

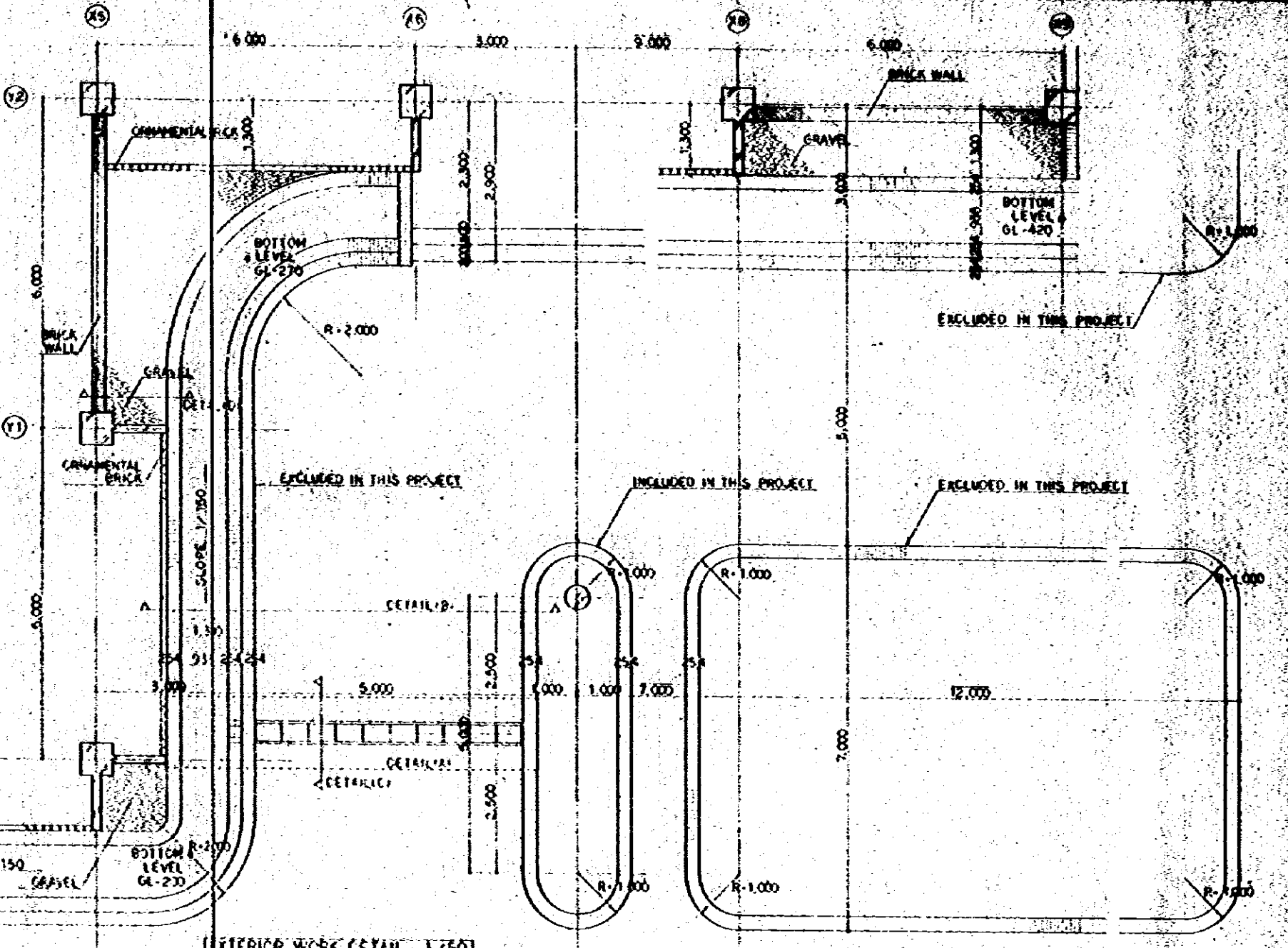


**BLOCK PLAN (EXTERIOR VIEW) 1/300**

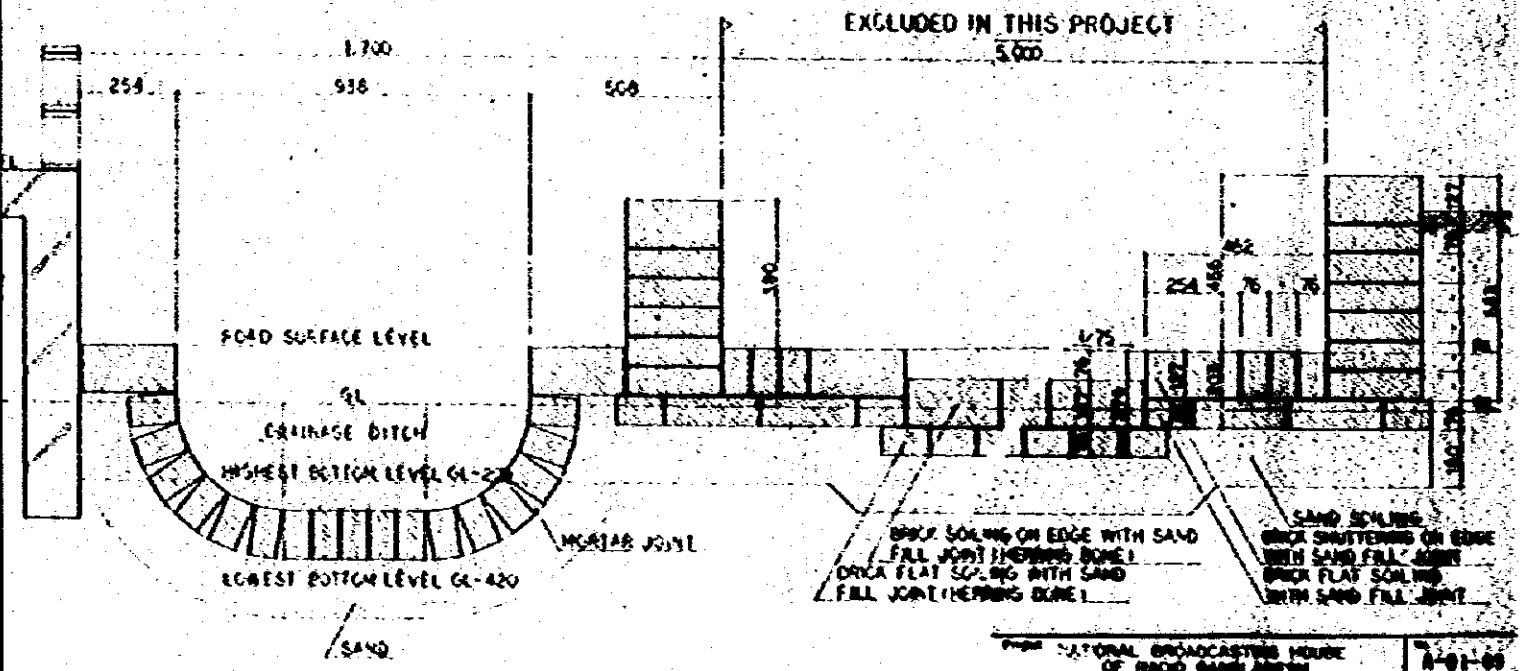
Prepared by NATIONAL BROADCASTERS HOUSE OF RADIO BANGLADESH		7-01-66
BLOCK PLAN EXTERIOR VIEW DETAIL 1/10		Scale 1:300
Checked by (C)	Drawn by (S)	Date 11-01-66
ENGINEERING CONSULTANTS CO. LTD.		



[DETAIL (A) 1/10]



[EXTERIOR WORK DETAIL 1/50]



[DETAIL (B) 1/10]

NATIONAL BROADCASTING HOUSE OF RADIO BAVILABESH		A-01-00
EXTERIOR WORK DETAIL (2)		FEB 1970
JYEC JAPAN ENGINEERING CONSULTANTS CO., LTD.		

