

NATIONAL BROADCASTING HOUSE  
OF RADIO BANGLADESH

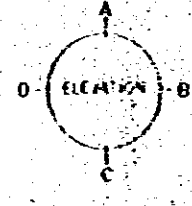
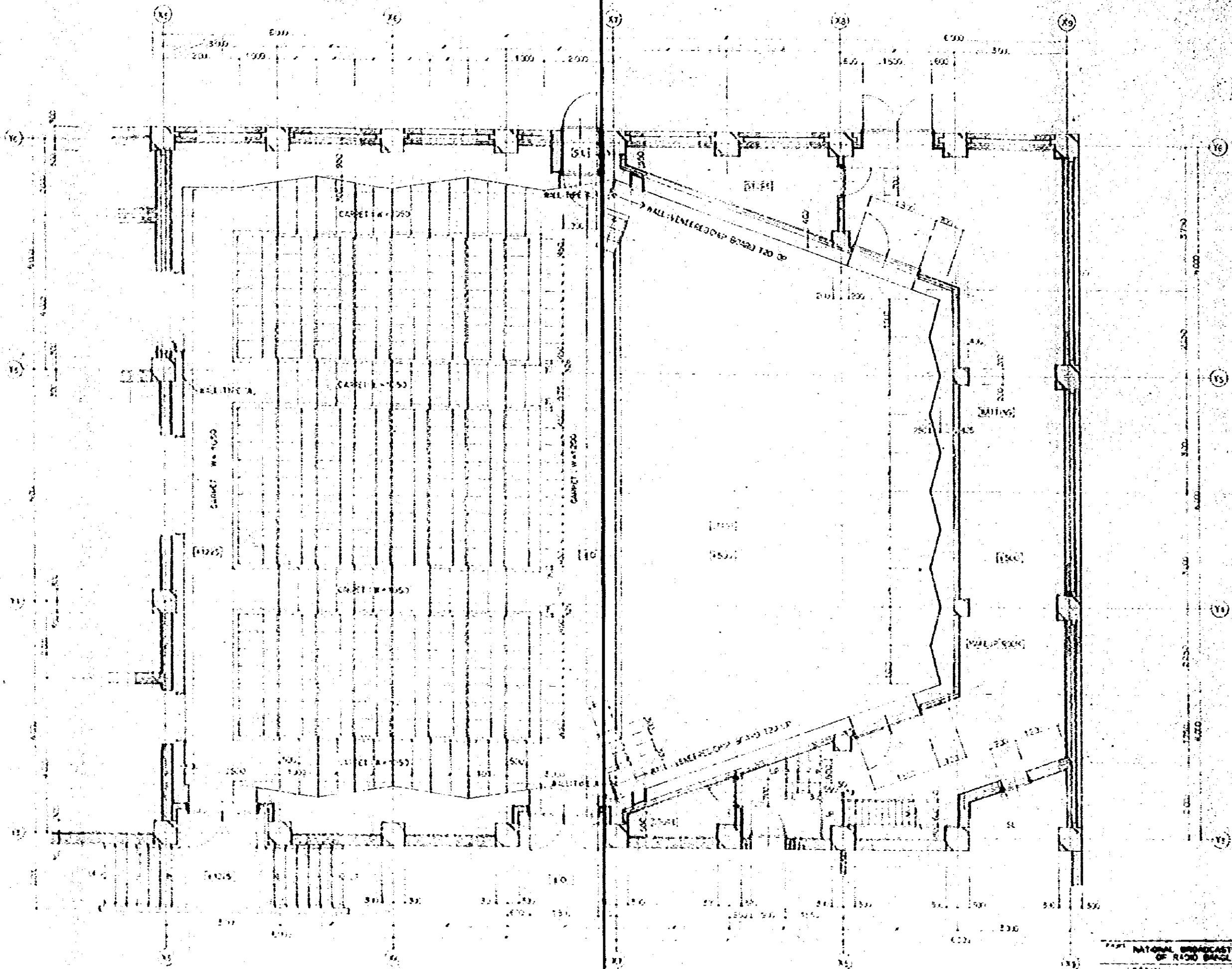
DETAIL I INTERIOR ELEVATION  
OF ROOM

DATE: 1971  
X.S.

100 FEB 1971

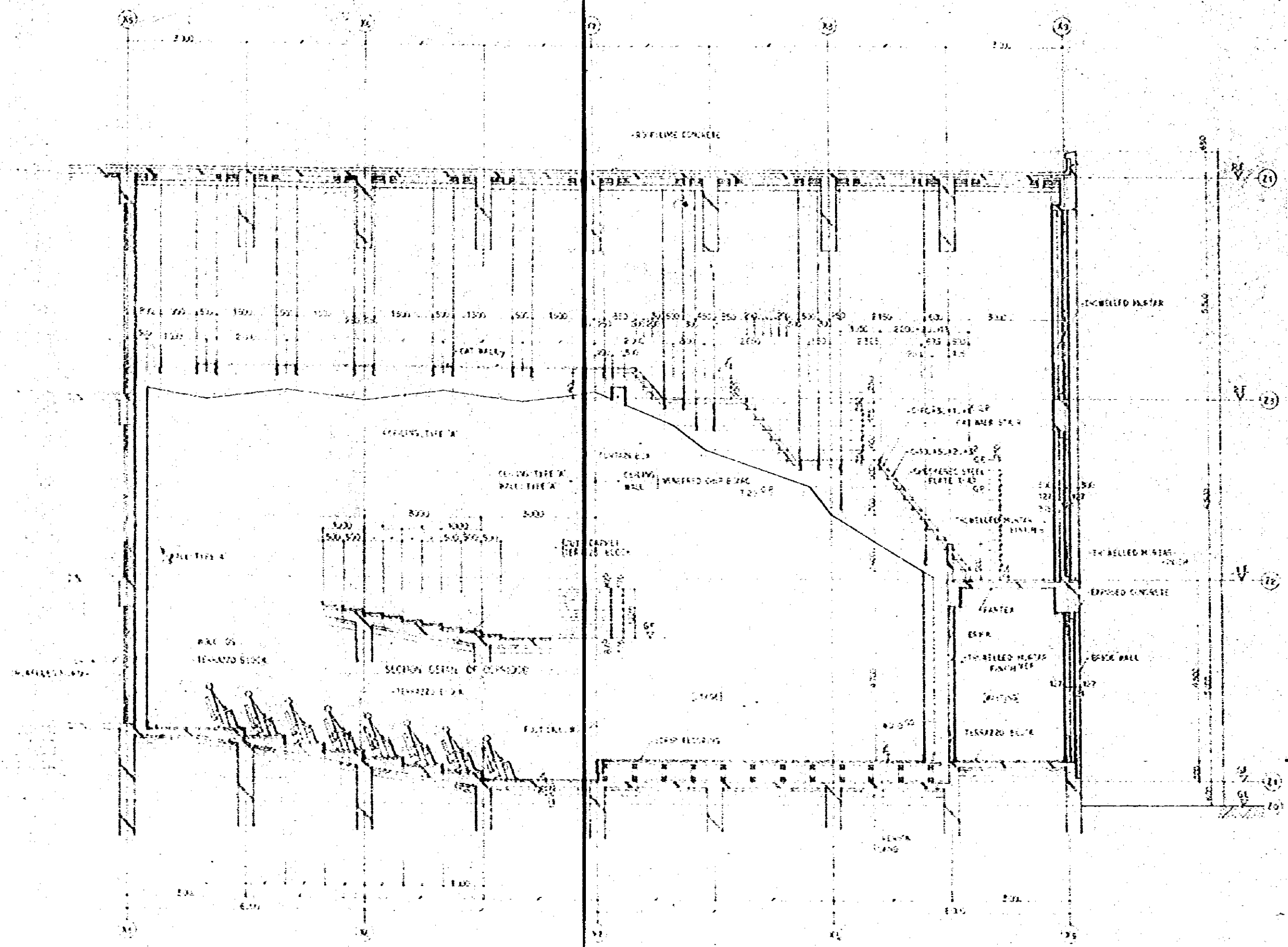
SAFI ENGINEERING CONSULTANTS CO., LTD.





DETAIL OF A GENCE PARTICIPATING STUDIO 3-150

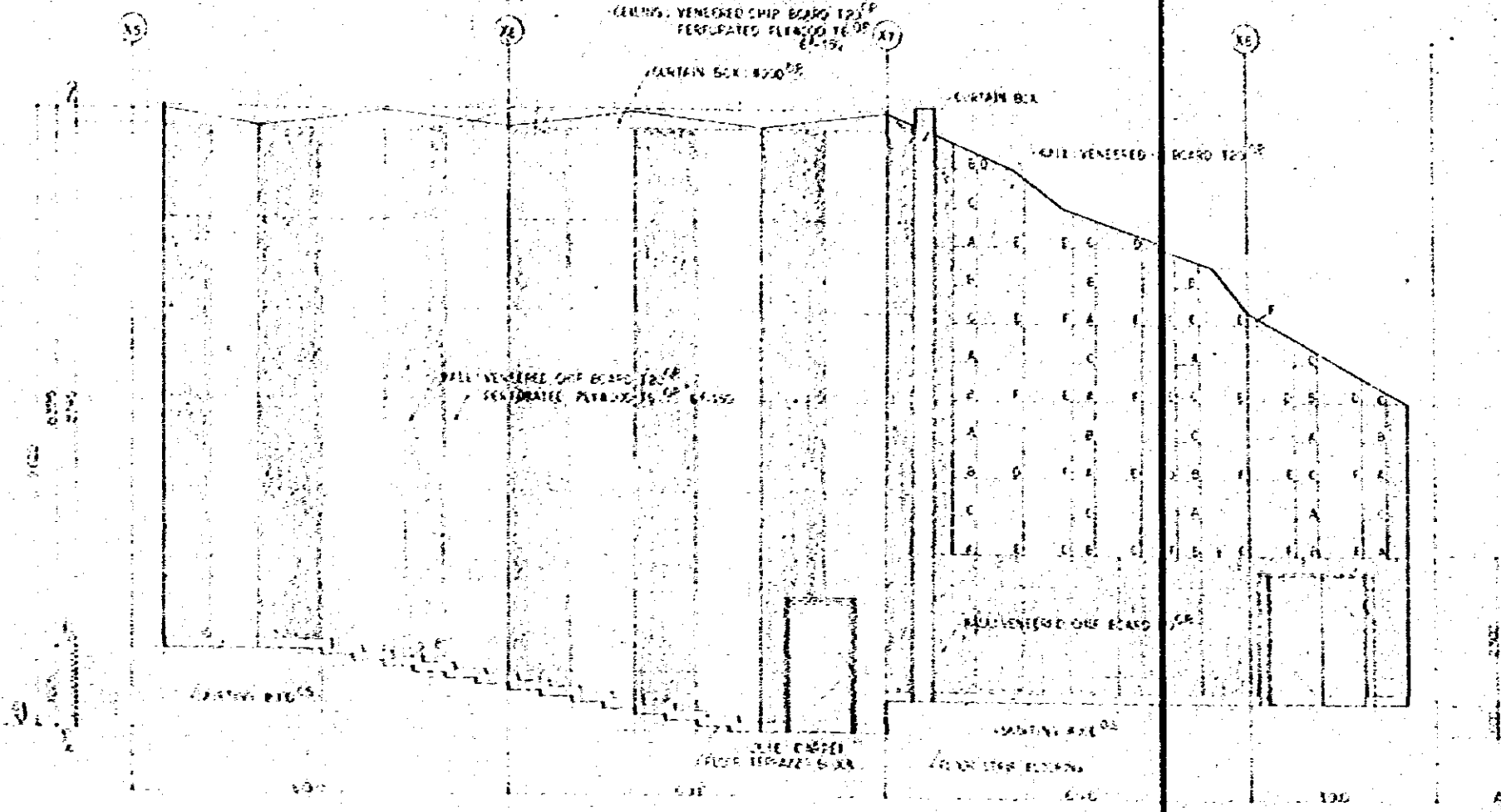
PART NATIONAL BROADCASTING HOUSE OF RADIO BANGLADESH		A-21-23
DETAIL OF A GENCE PARTICIPATING STUDIO		1:50
DATE: 1958		REV: 01
DRAWN BY: J. H. H.		CHECKED BY: H. S.
DESIGNED BY: J. H. H.		
SCALE: AS SHOWN		
ENGINEERING CONSULTANTS CO., LTD.		



SECTION DETAIL OF FACIENCE PARTICIPATING STUDIO

NATIONAL BROADCASTING HOUSE OF RADIO BANGALORE	A-01-28
SECTION DETAIL OF FACIENCE PARTICIPATING STUDIO	SCALE 1/20
DATE	FEB 58
DESIGNED BY	K.S.
DRN	JAN ENGINEERING CONSULTANTS CO., LTD.

AUDIENCE PARTICIPATING STUDIO INTERIOR ELEVATION S-1550, 501

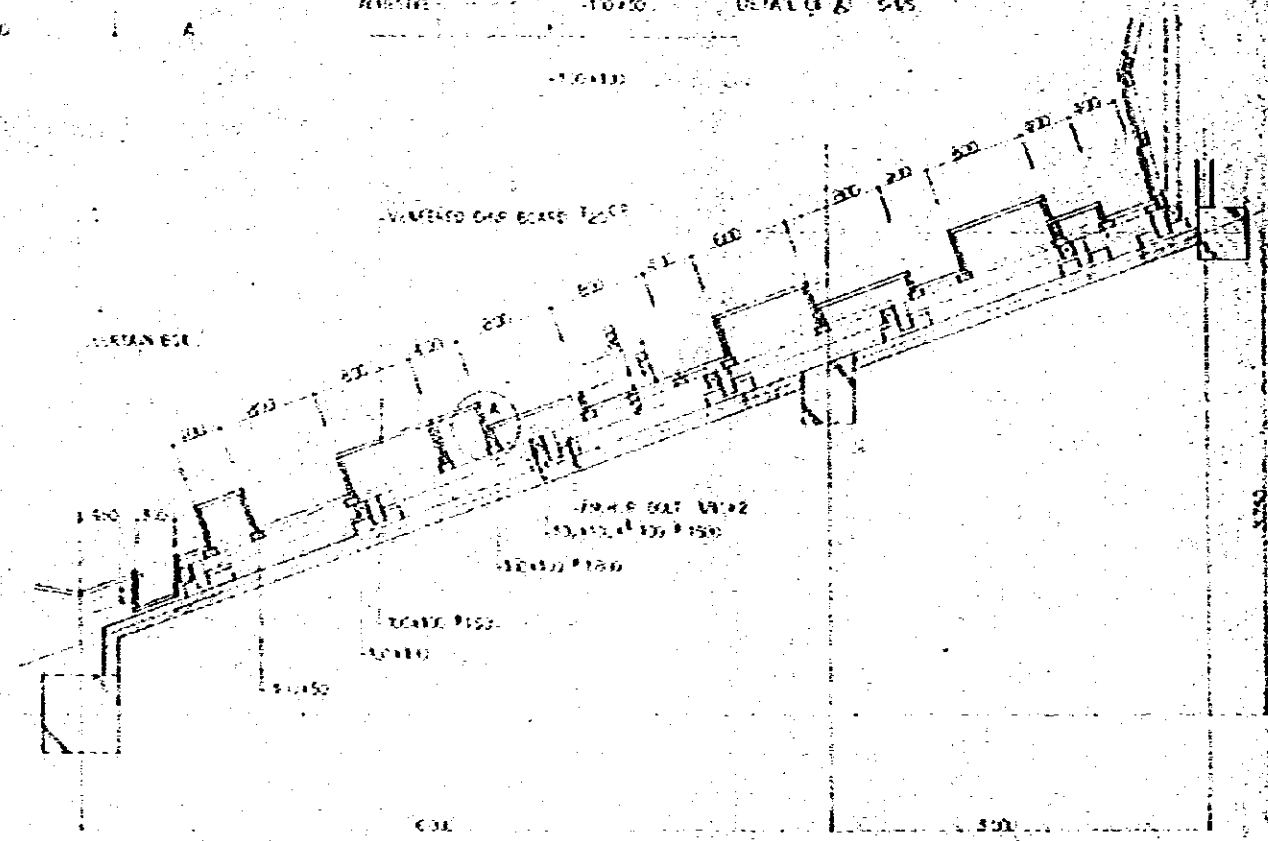
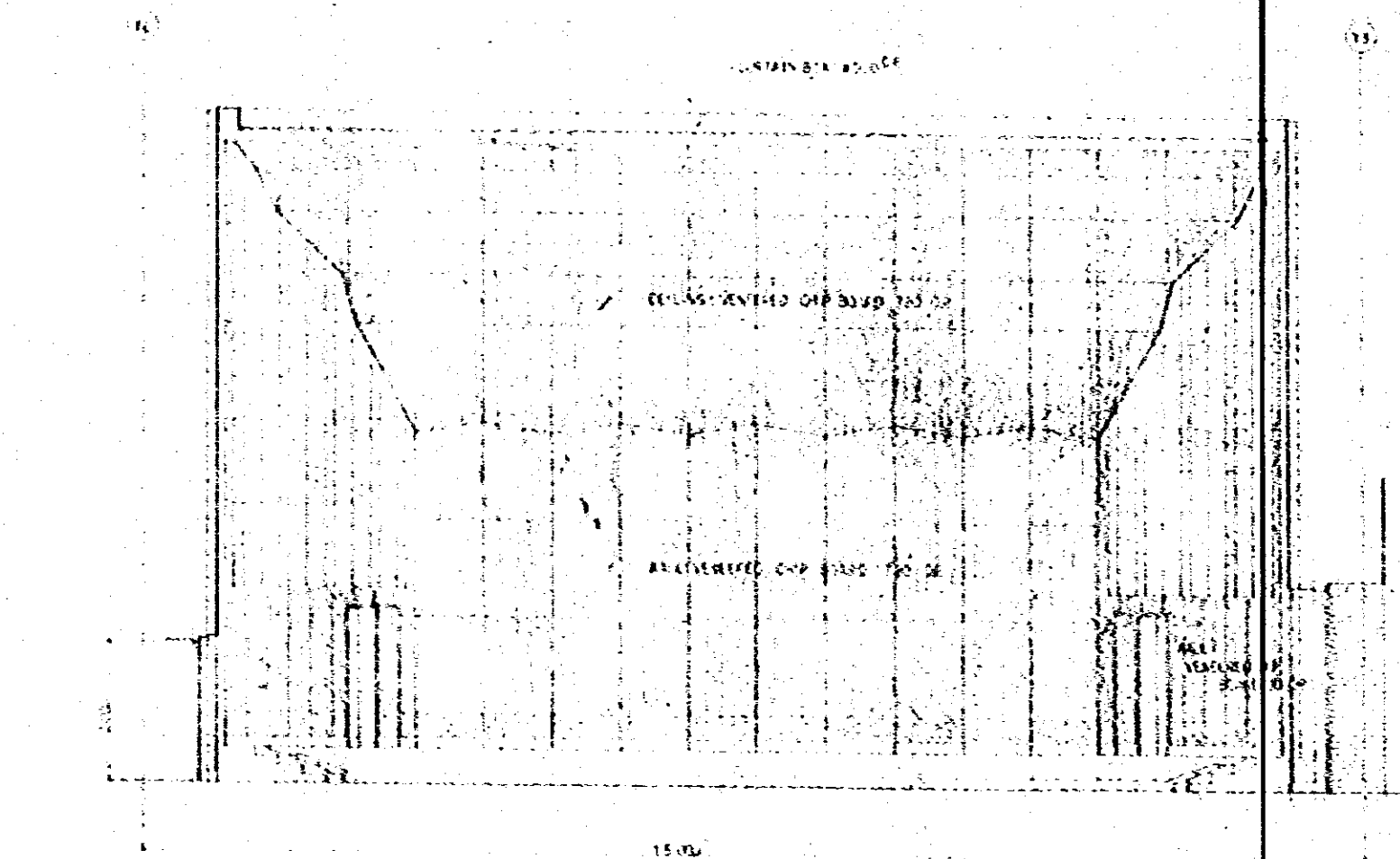
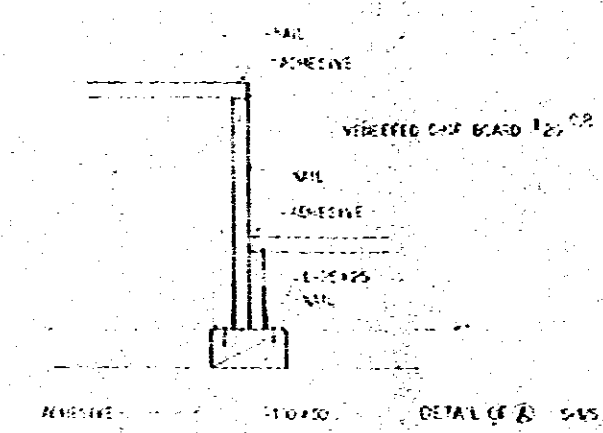


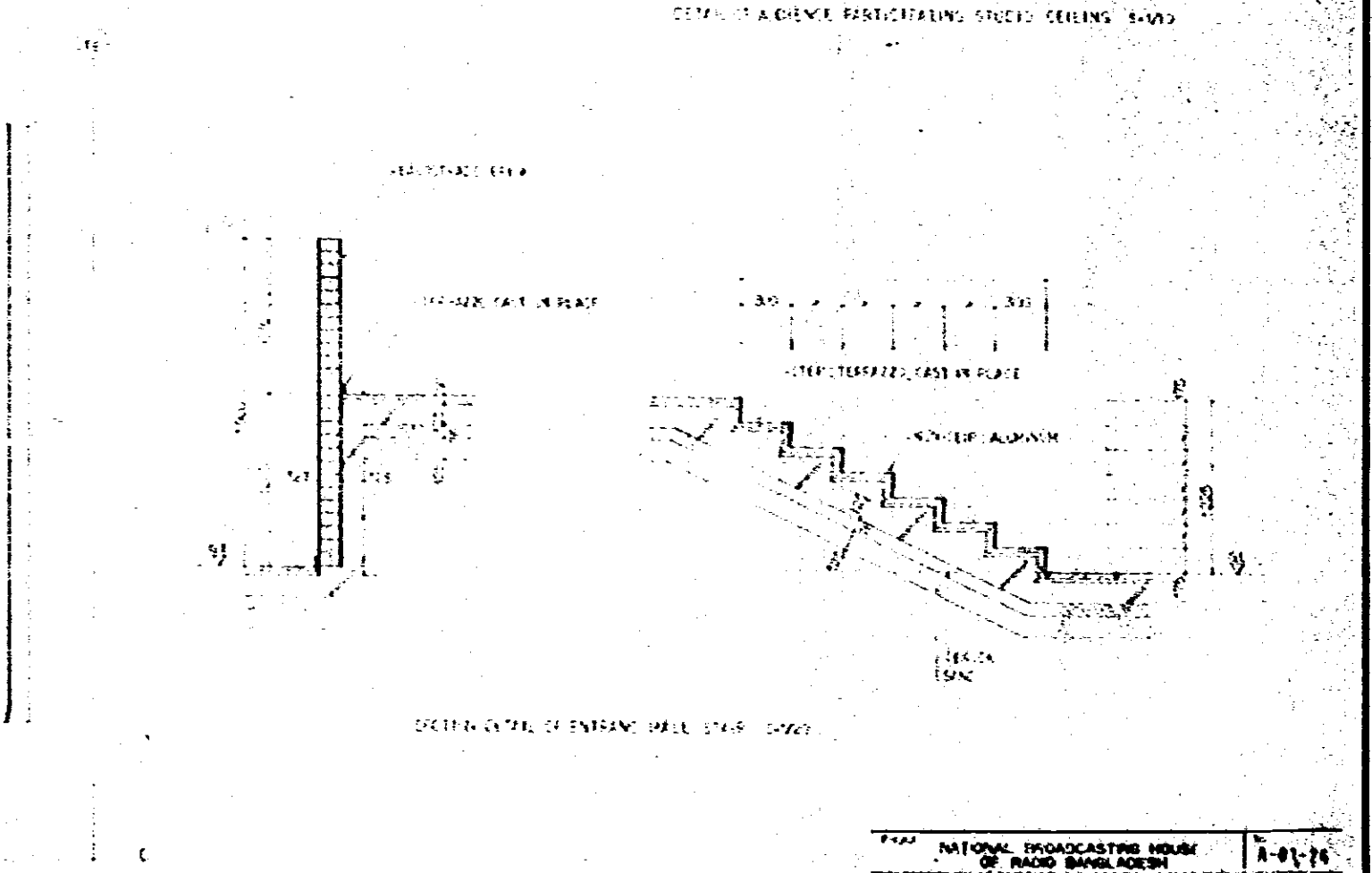
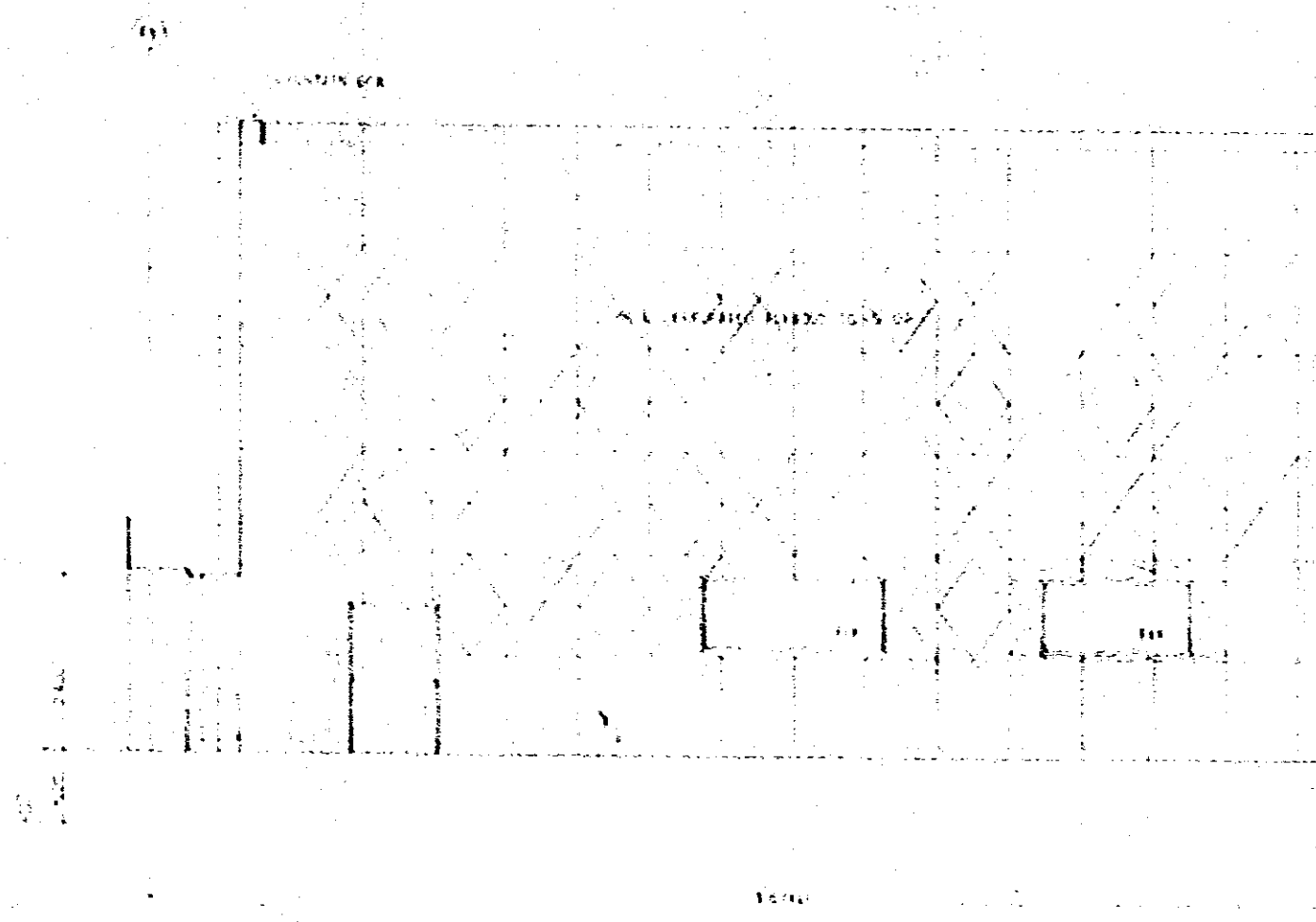
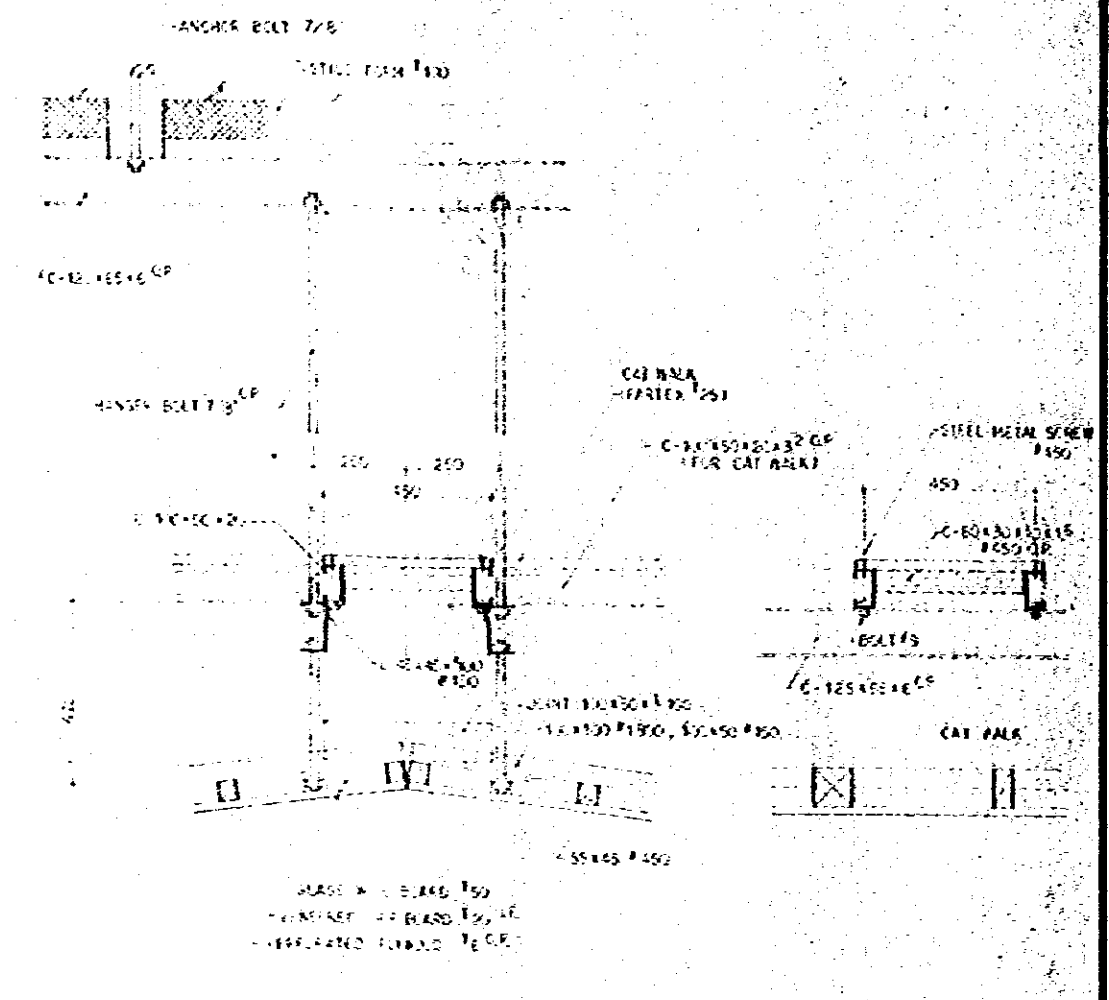
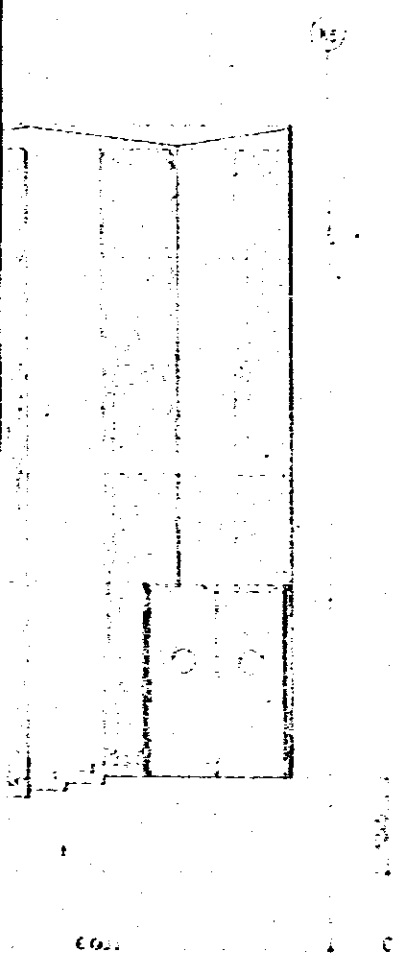
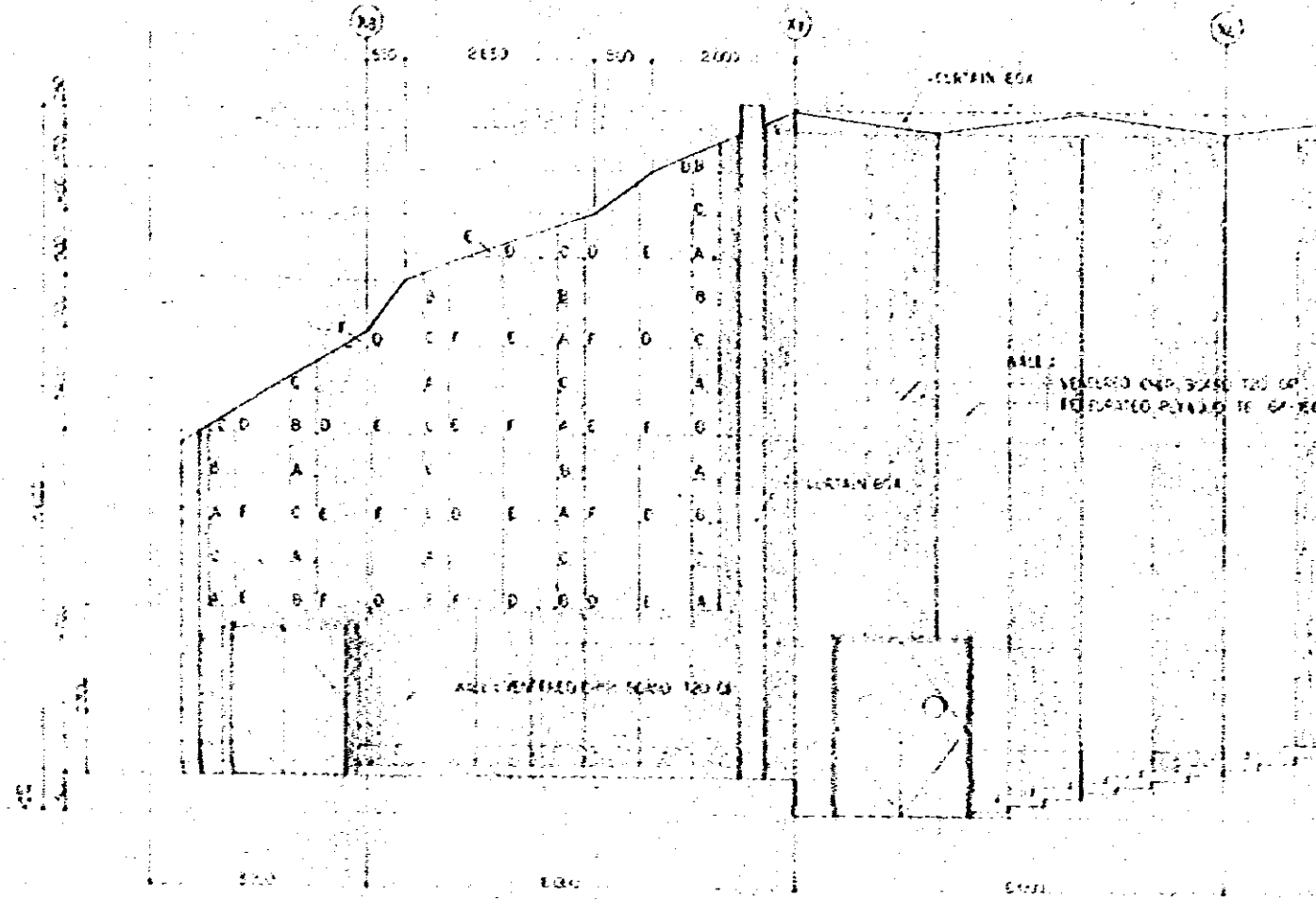
PERFERS

- A - 400 X 600 X 10<sup>4</sup>
- B - 400 X 600 X 12<sup>4</sup>
- C - 400 X 600 X 15<sup>4</sup>
- D - 800 X 1200 X 10<sup>4</sup>
- E - 800 X 1200 X 12<sup>4</sup>
- F - 800 X 1200 X 15<sup>4</sup>

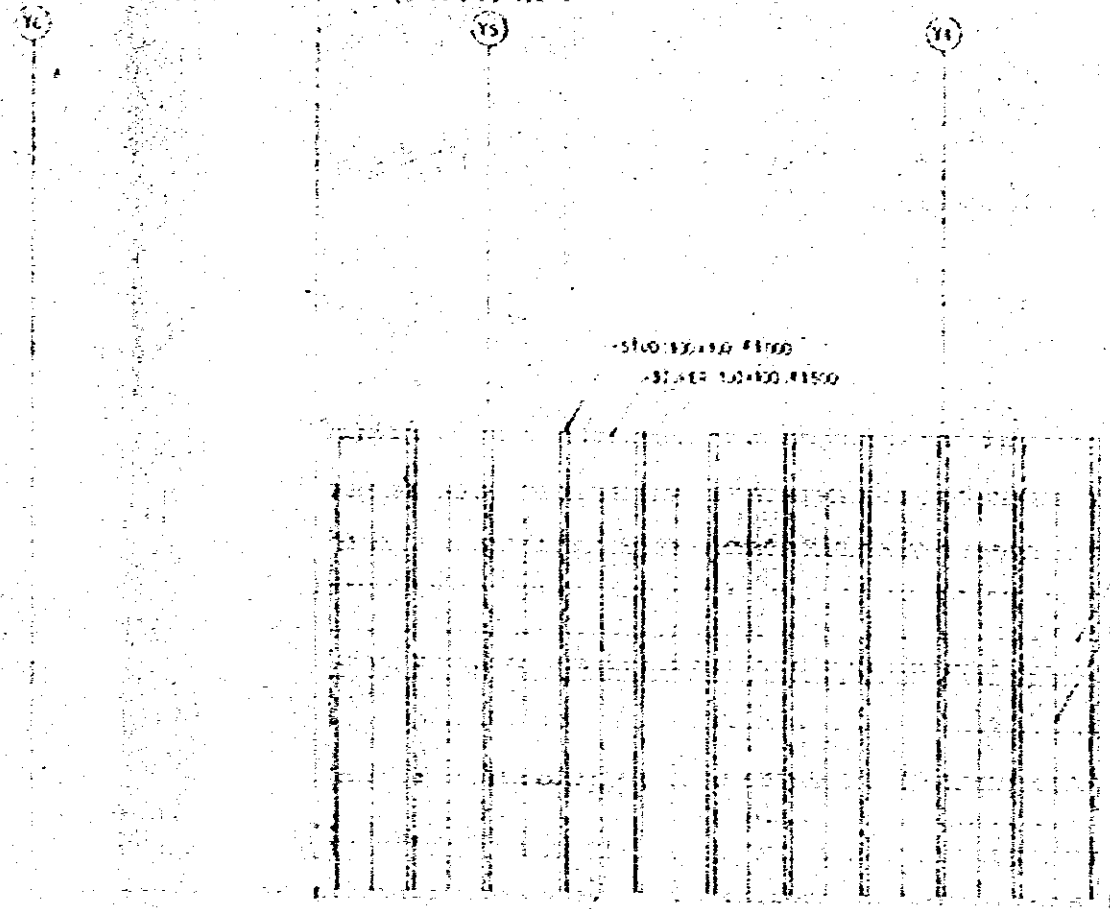
CEILING WALL FINISH

- R - VENEERED CHIP BOARD 125 CP 1000 X 1400
- Q - PERFORATED PLYWOOD 16 CP 150 GP 1000 X 1400
- M - " " " " " " 1200 X 1800
- N - " " " " " " 1000 X 1400

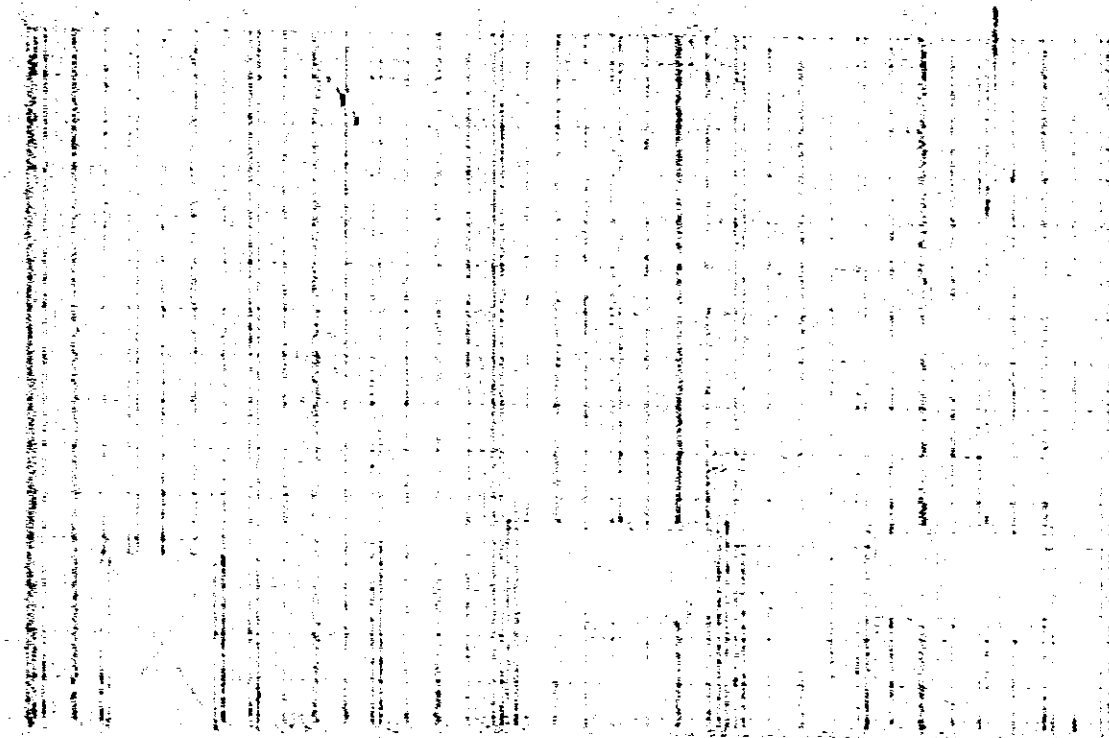




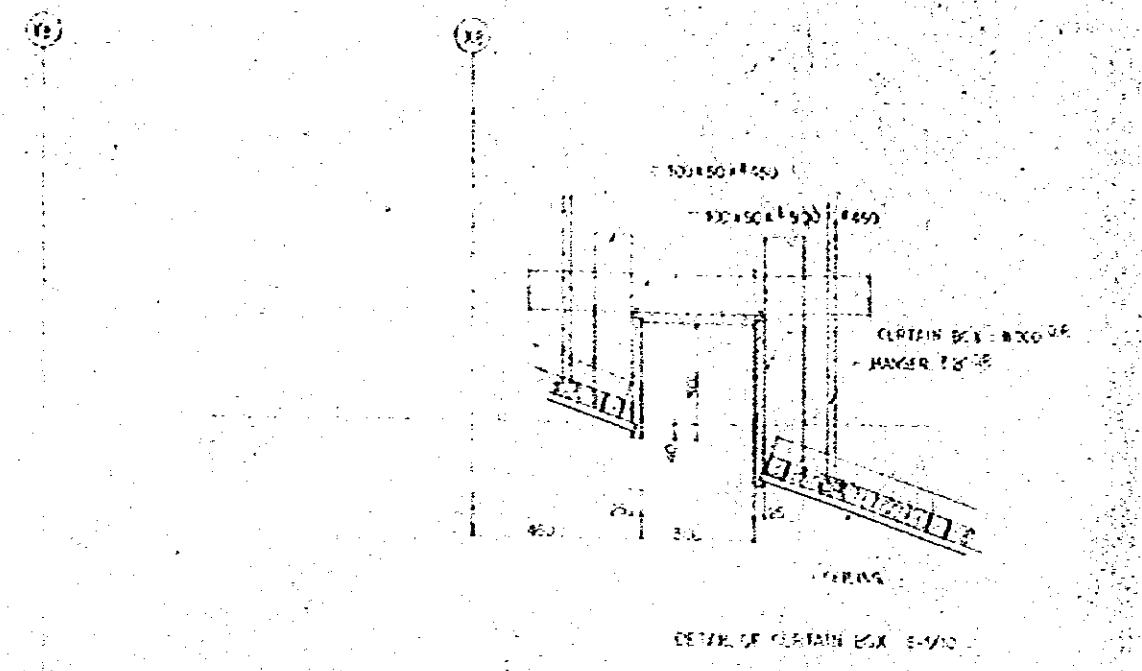




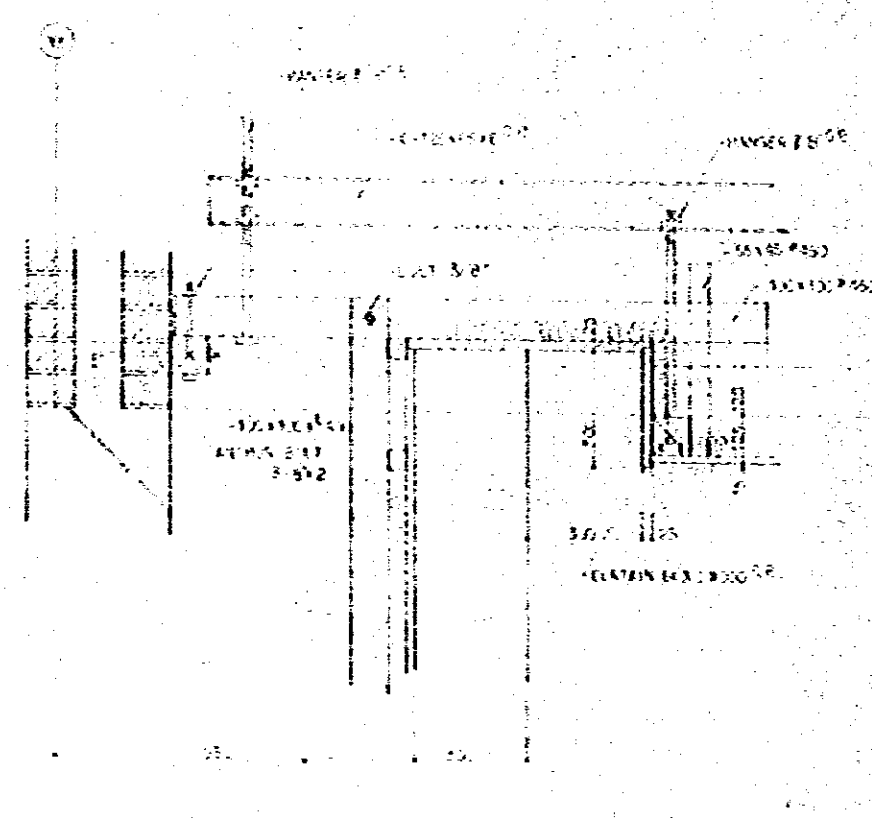
1800 2200 2300 2400



1800 2200 2300 2400



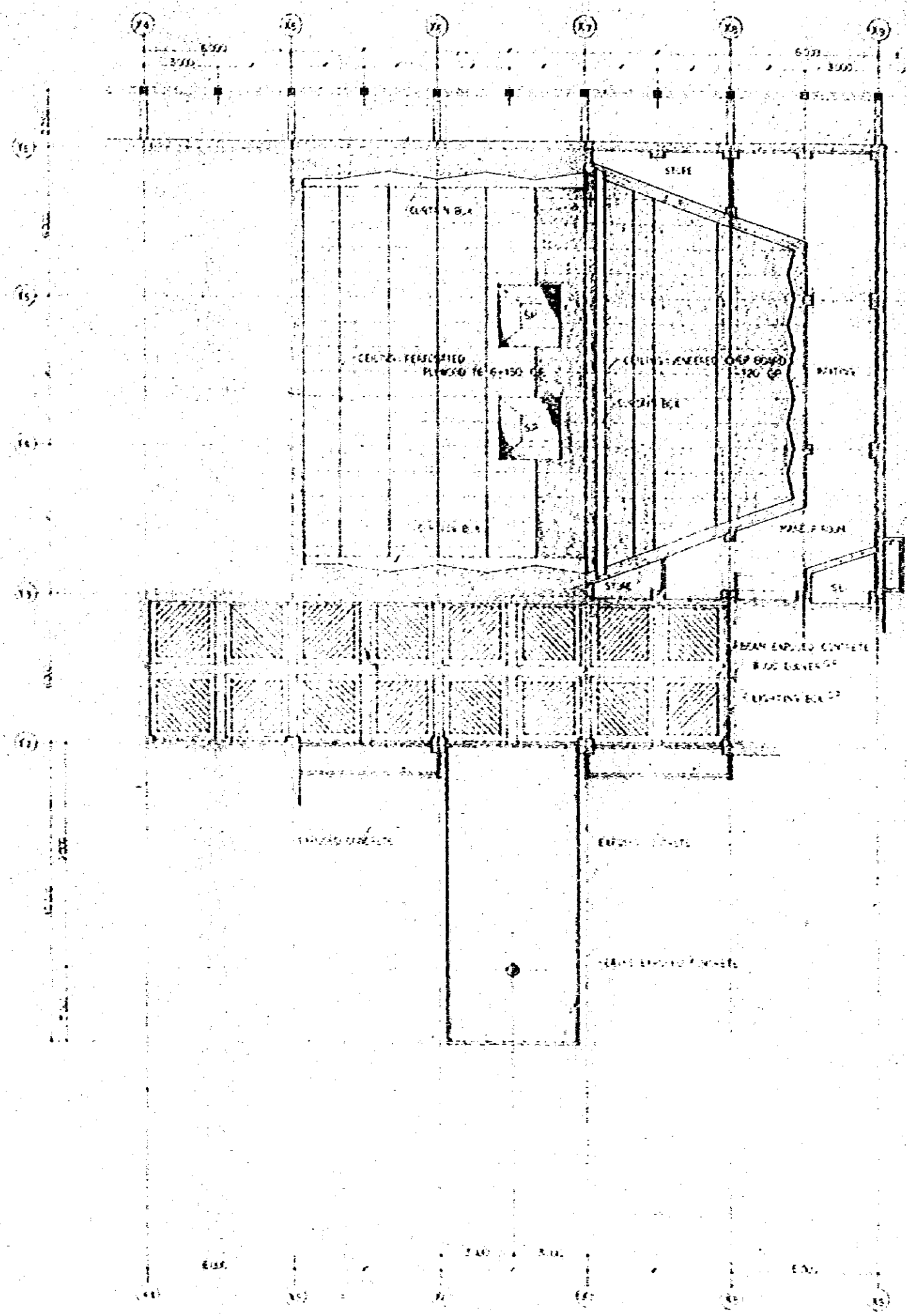
1800 2200 2300 2400



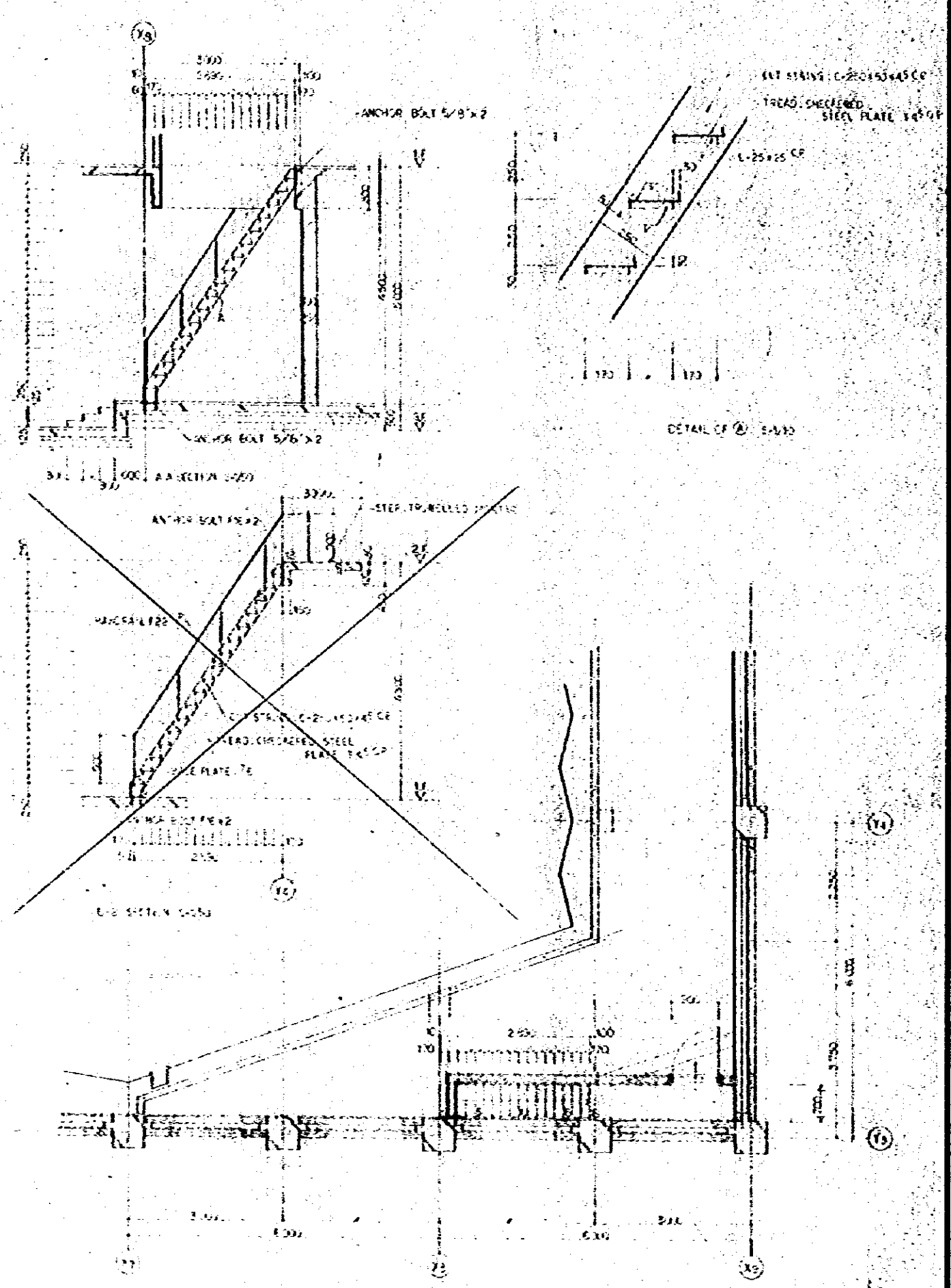
1800 2200 2300 2400







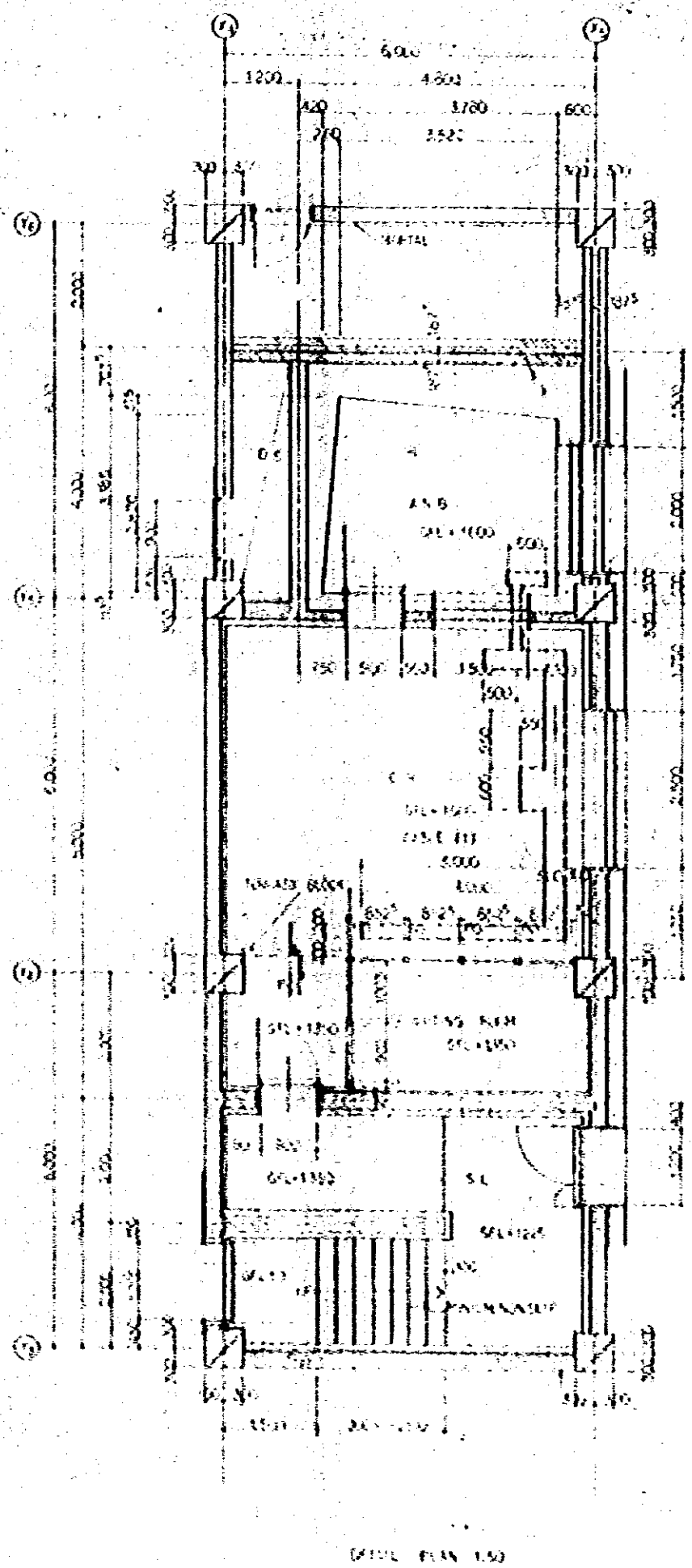
SELECTED CEILING PLAN OF AUDIENCE PARTICIPATING STAGE & TRANCE HALL S-500



DETAIL OF STAIR S-500

FROM NATIONAL BROADCASTING HOUSE OF RADIO BANGLADESH		A-01-30
PERFECTED CEILING PLAN OF AUDIENCE PARTICIPATING STAGE & TRANCE HALL S-500		DATE: 1970 12/15
J.E.P.C. ENGINEERING CONSULTANTS CO., LTD.		FEB 1971

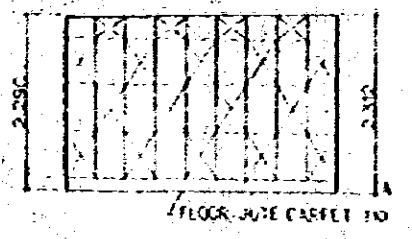




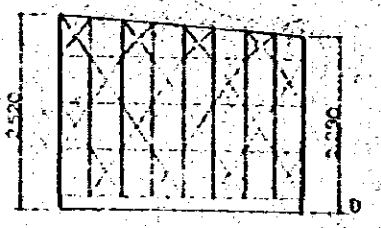
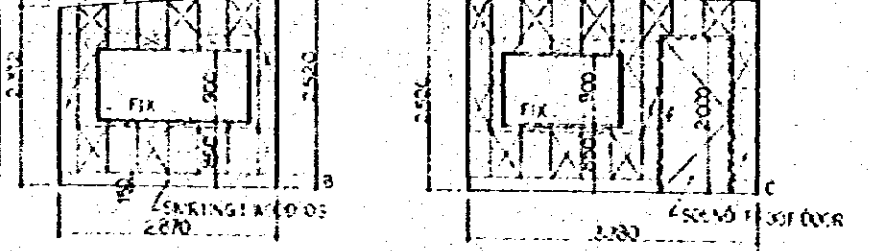
DETAIL PLAN 1:50

INTERIOR ELEVATION 1:50

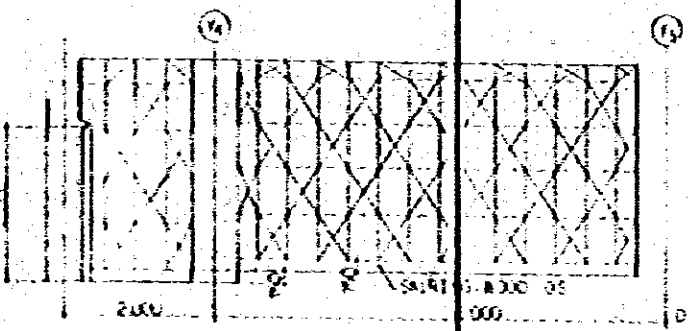
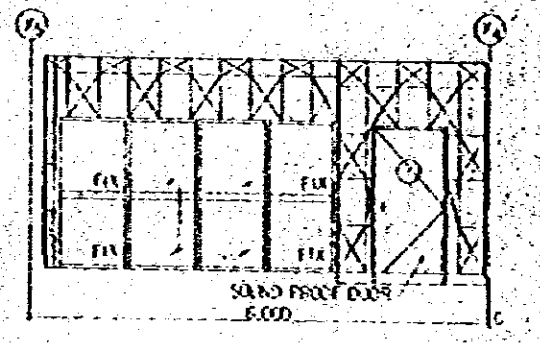
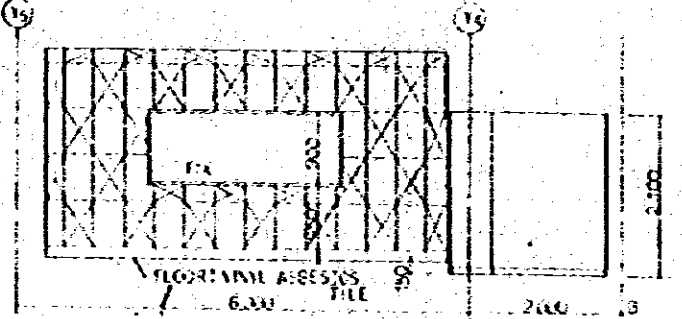
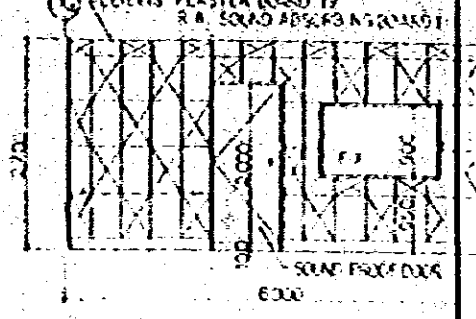
[AVANCE BOOTH]



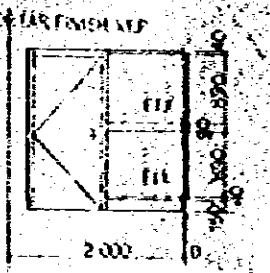
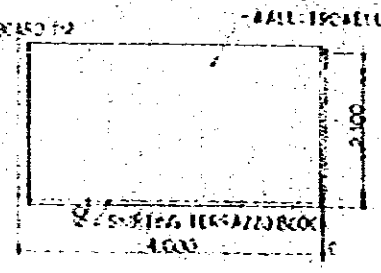
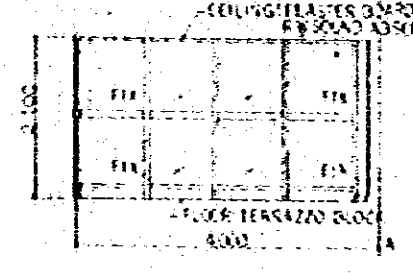
CEILING: PERFORATED PLYWOOD 16 011



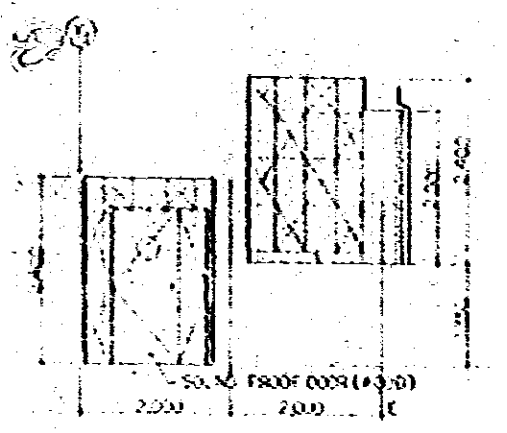
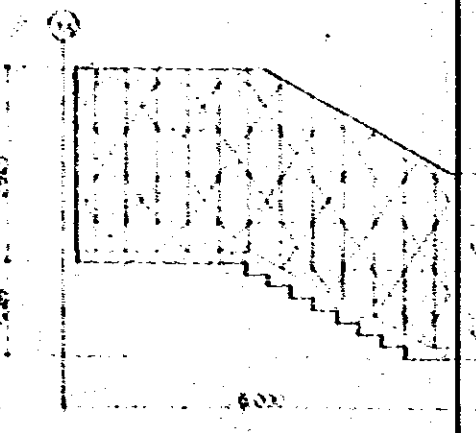
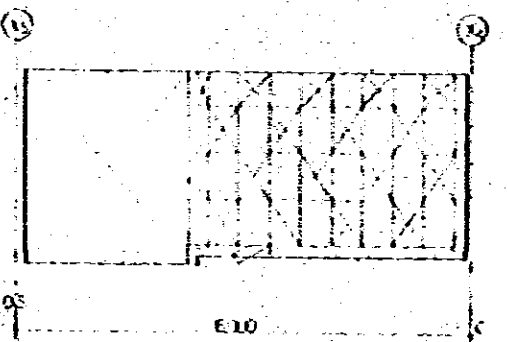
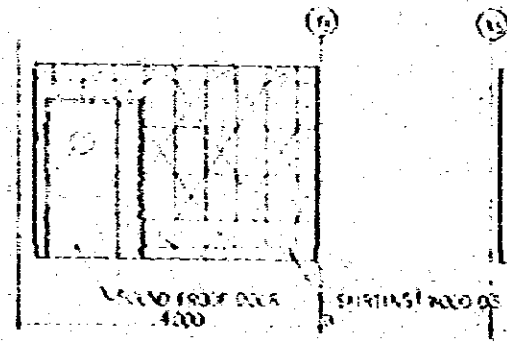
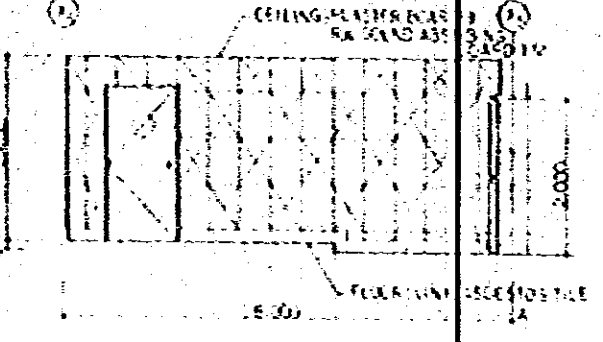
[CONTROL ROOM]



[STUDIO ROOM]

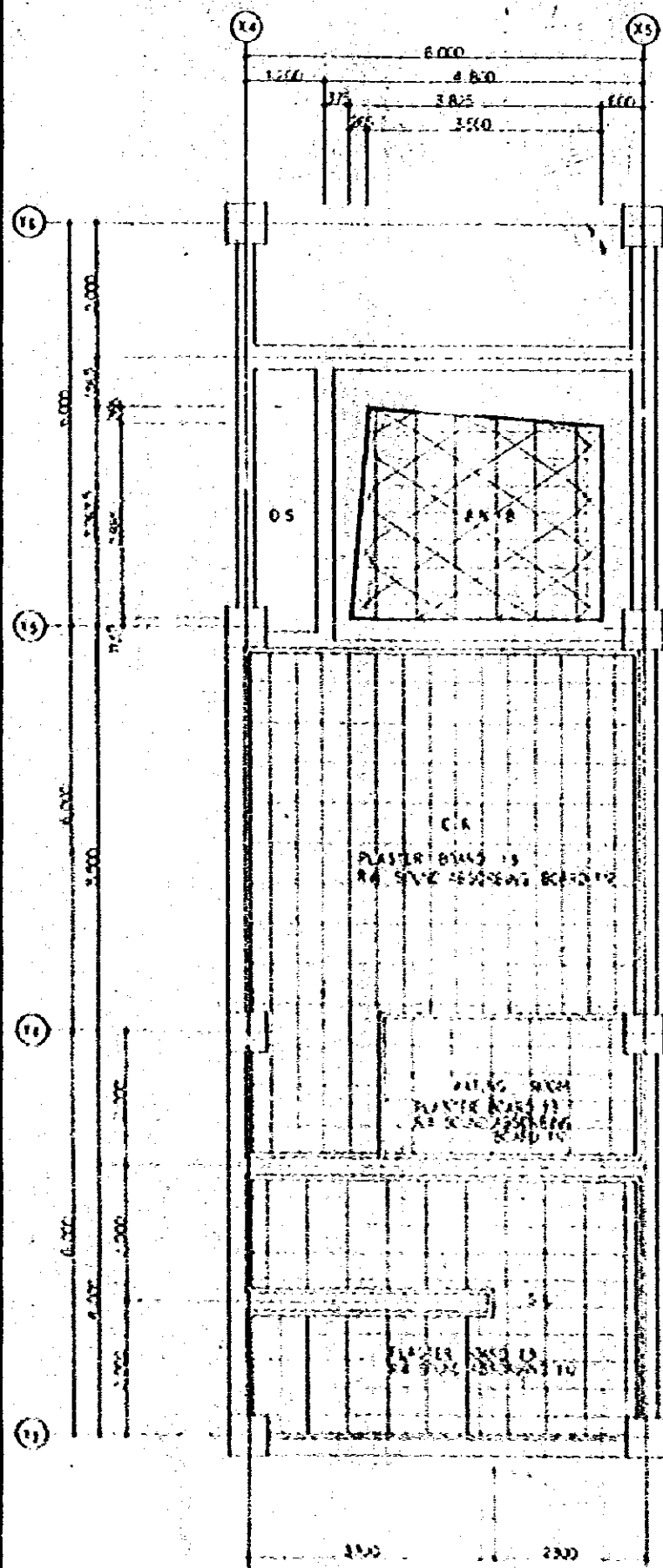


[STUDIO ROOM]



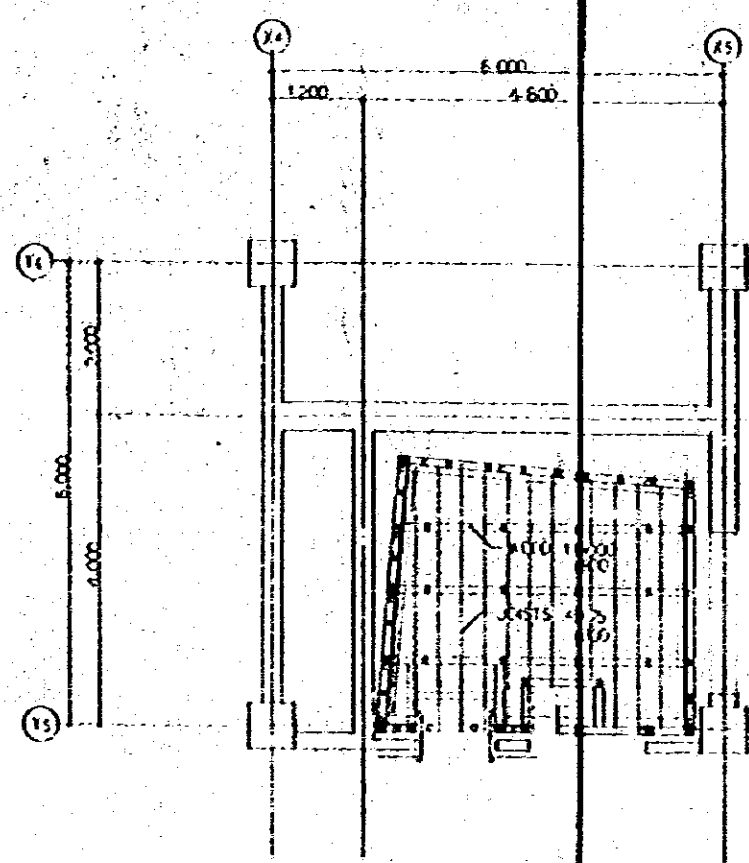
WALL FINISH

- PERFORATED PLYWOOD 16 011 60-150 400-200
- PERFORATED PLYWOOD 16 011 90-20 400-200



REFLECTED CEILING PLAN 1:50

- FINISHED FLOOR TO OF 11-50 400x600
- FINISHED FLOOR TO OF 11-20 400x600

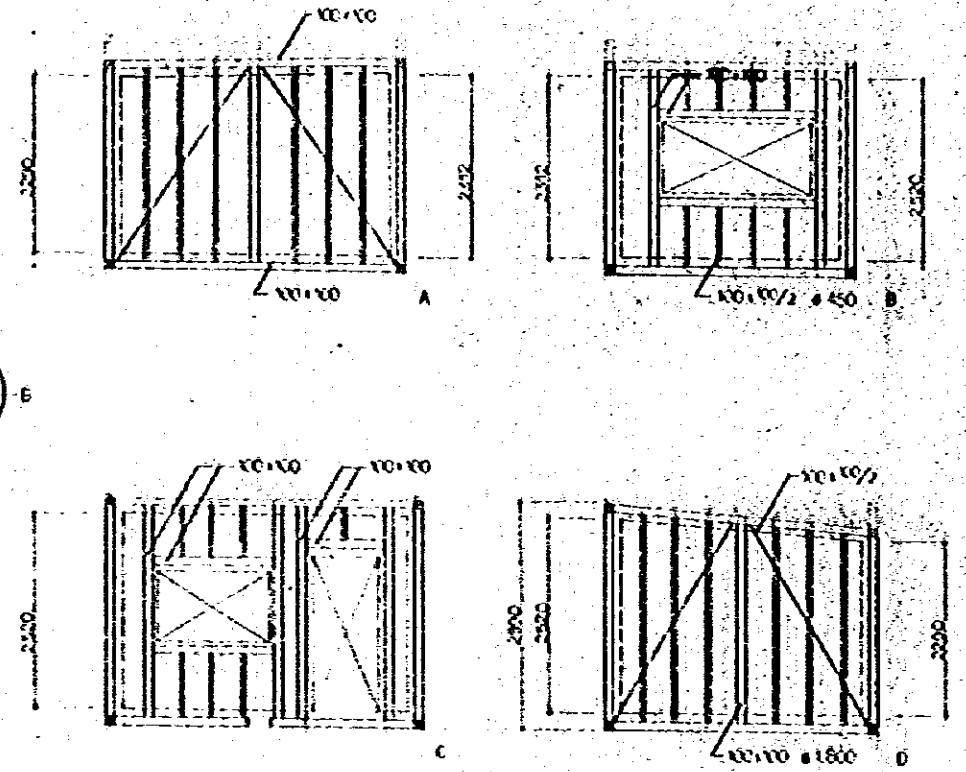


FRAMING PLAN 1:50

VIBRATION PROOF ALBUM

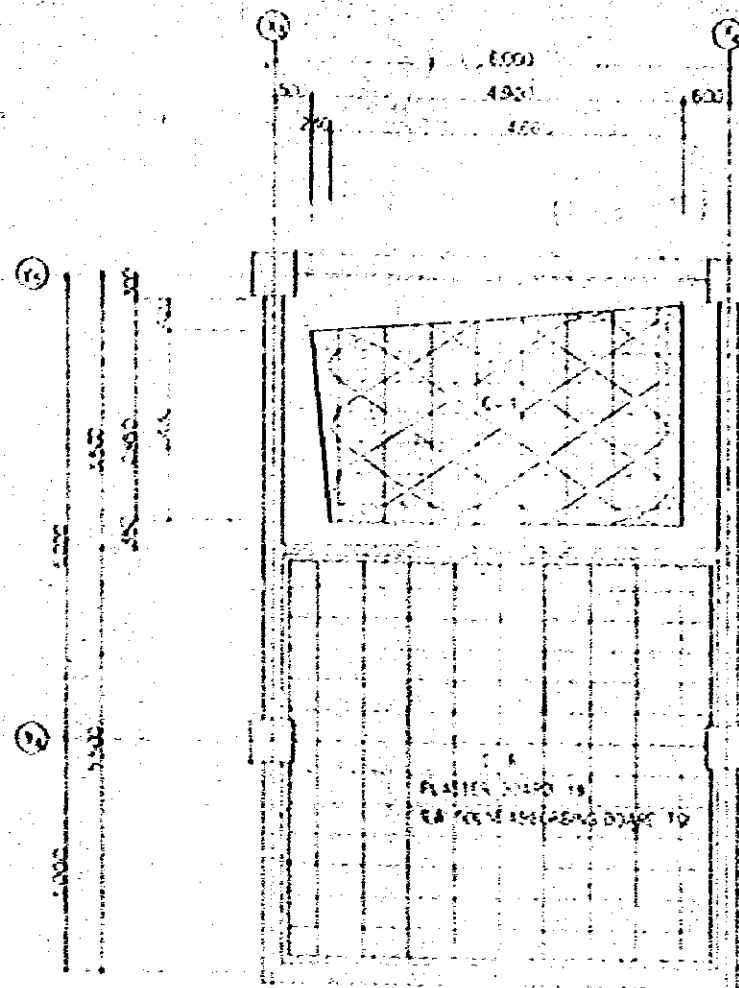
SYMBOL	TYPE	FCS
8	TYPE-40	14
9	TYPE-70	13

AN B. FRAME WORK ELEVATION LIST 1:50



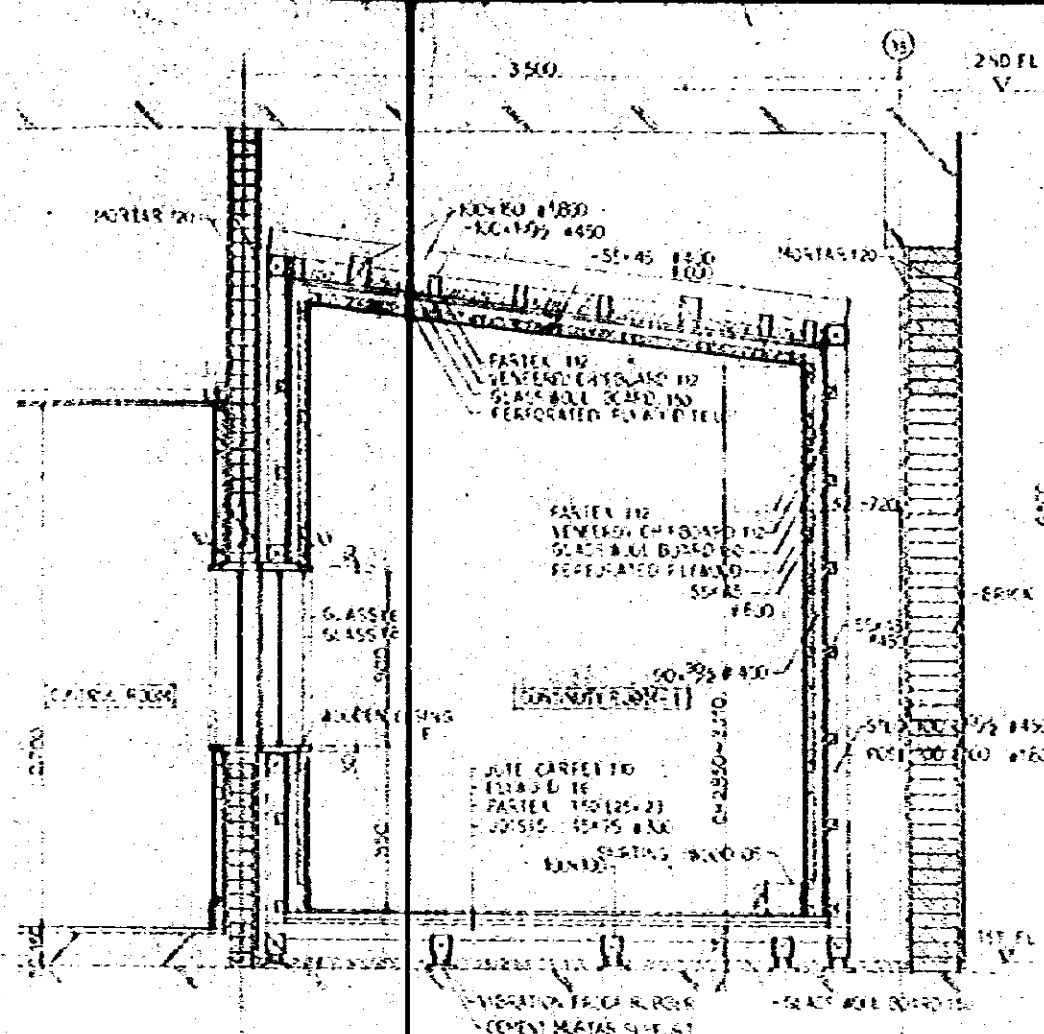




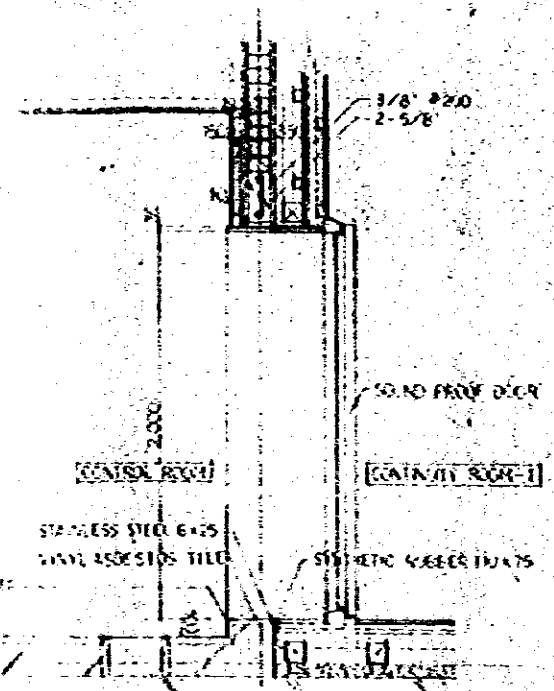


SELECTIVE CEILING PLAN 1:50

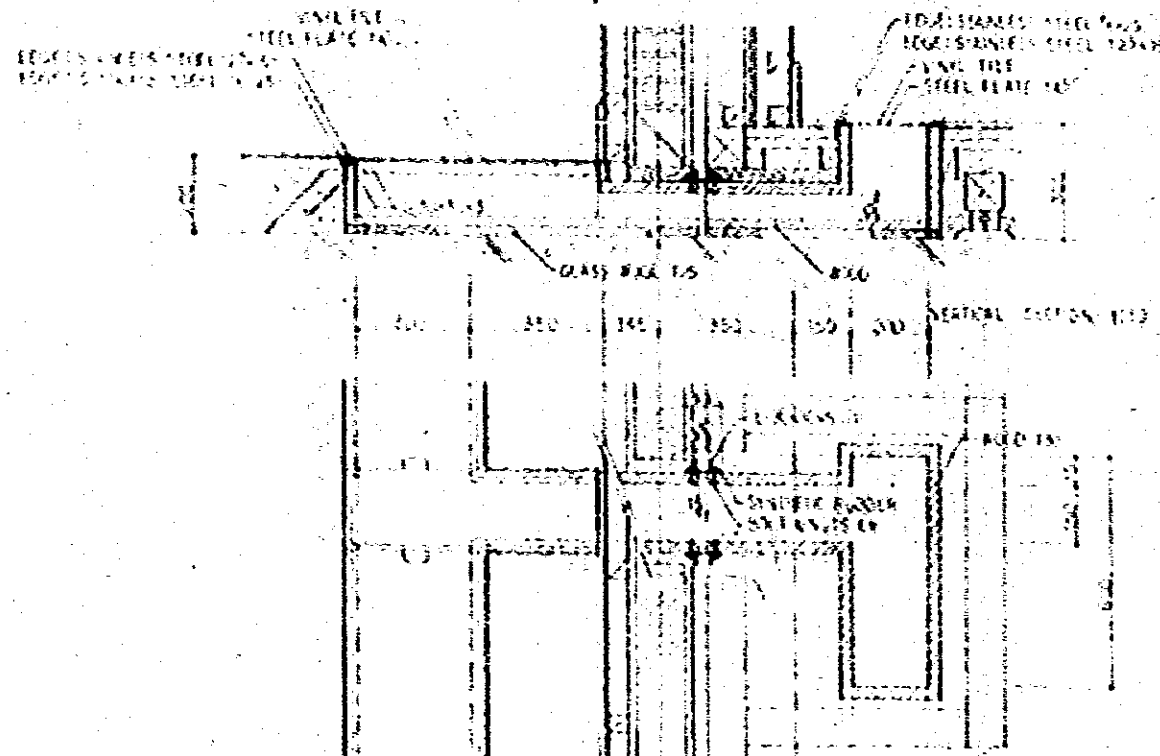
  PERFORATED FILM OF 81-150  
  PERFORATED FILM OF 81-20



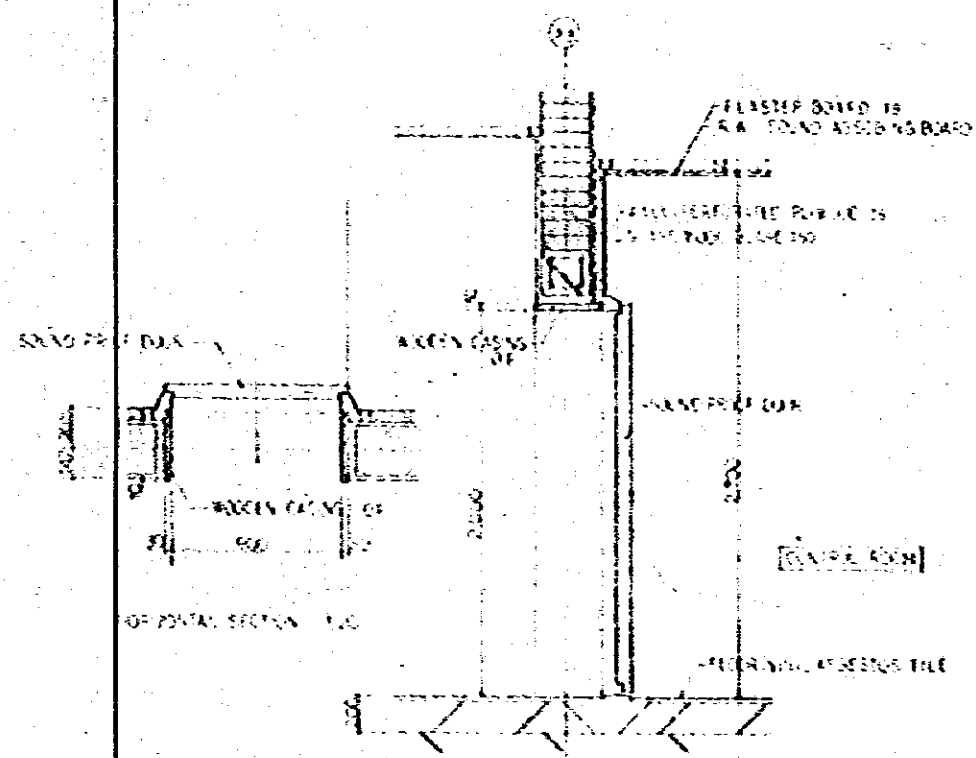
VERTICAL SECTION 1:20



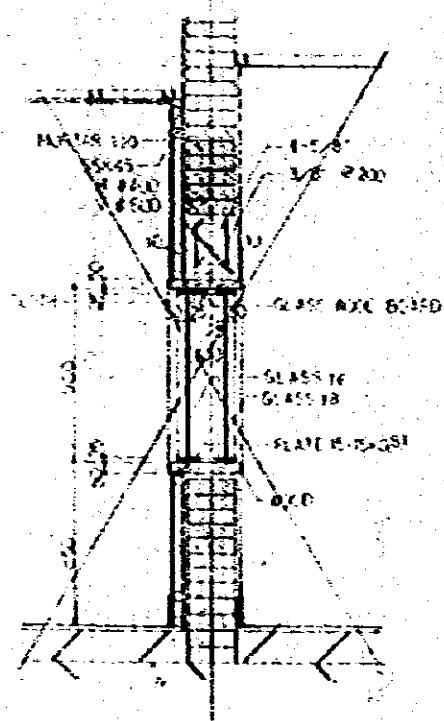
VERTICAL SECTION



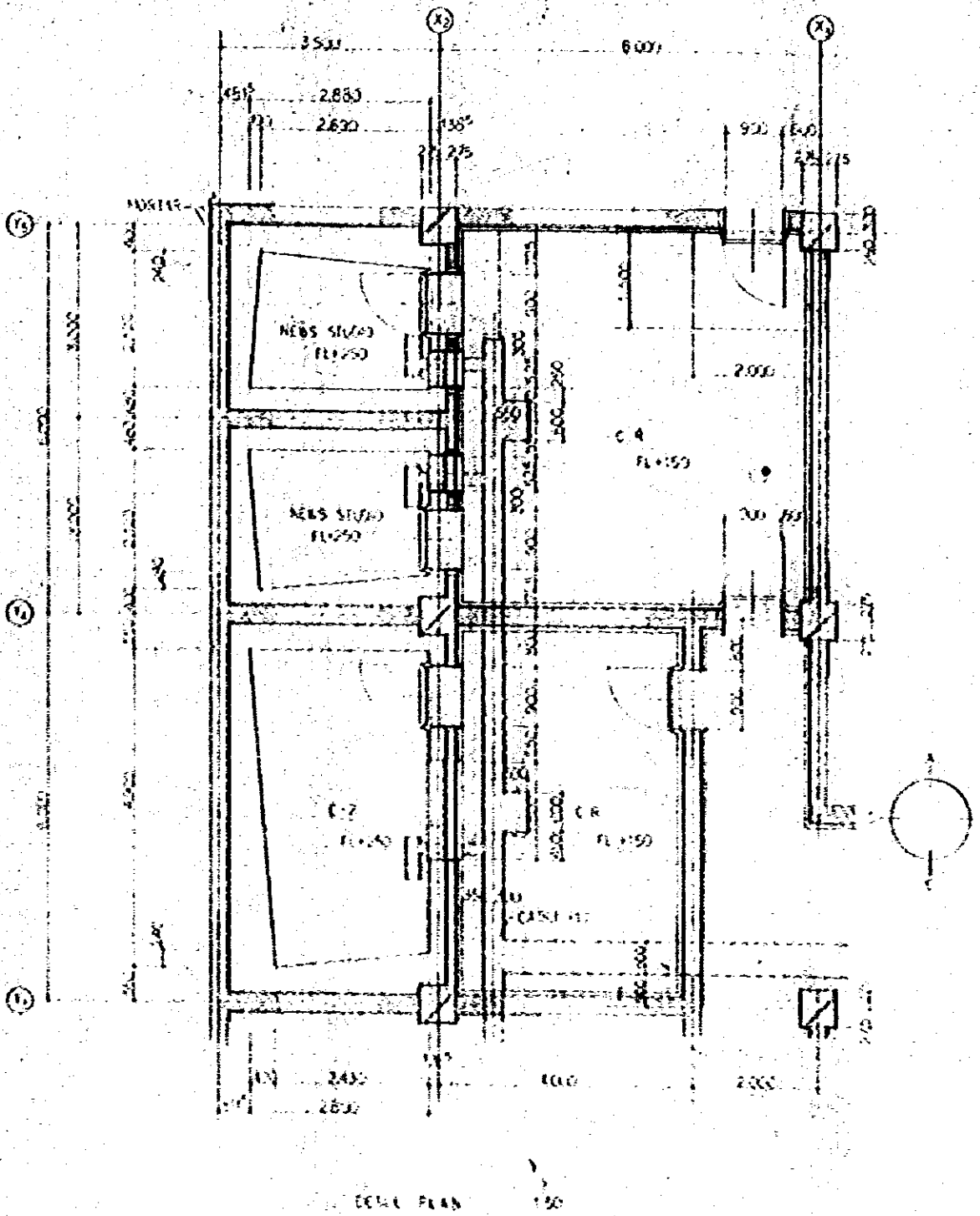
CONTINUITY ROOM VERTICAL SECTION 1:10



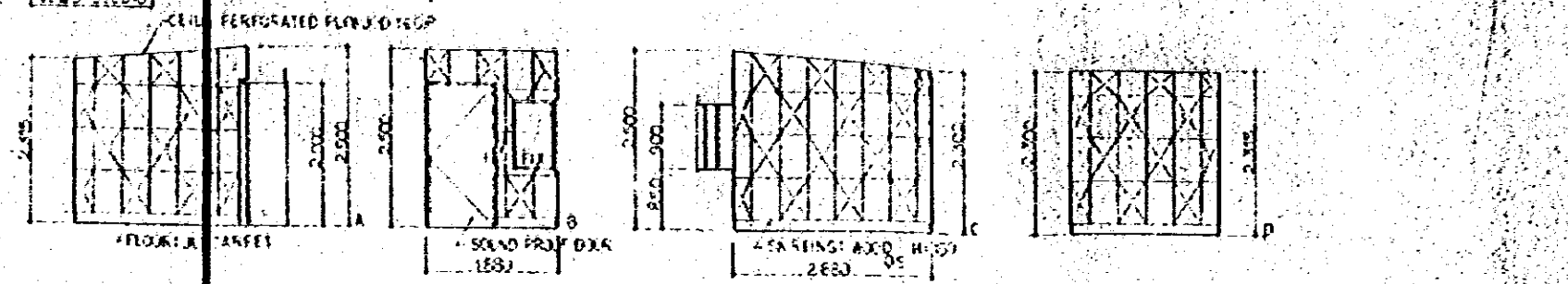
VERTICAL SECTION 1:20



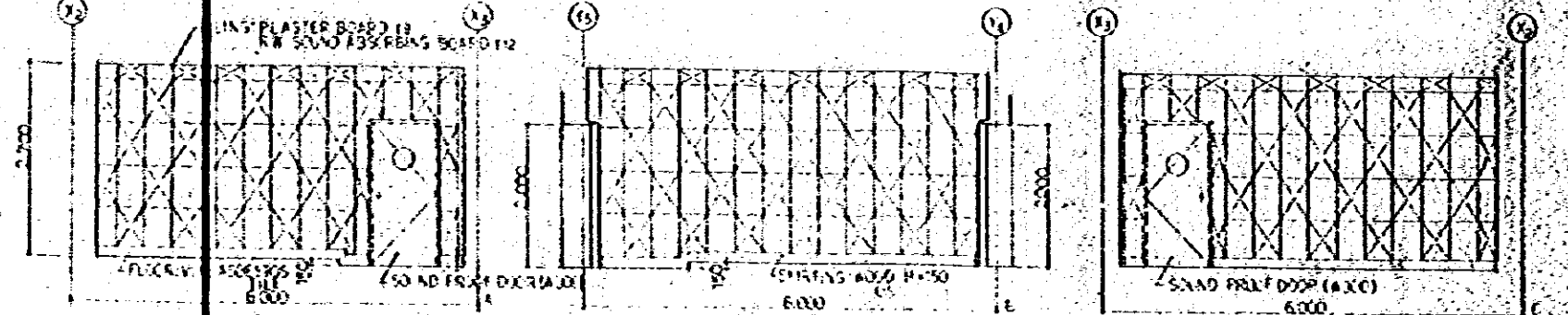




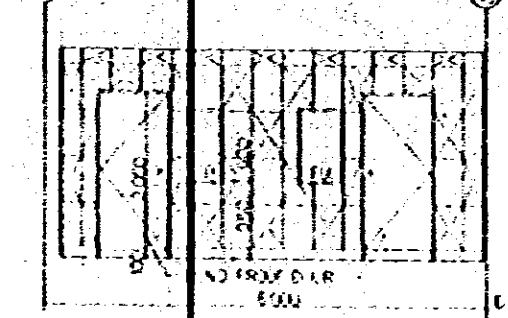
INTERIOR ELEVATION 1  
[NEWS STUDIO]



INTERIOR ELEVATION 2  
[NEWS STUDIO]

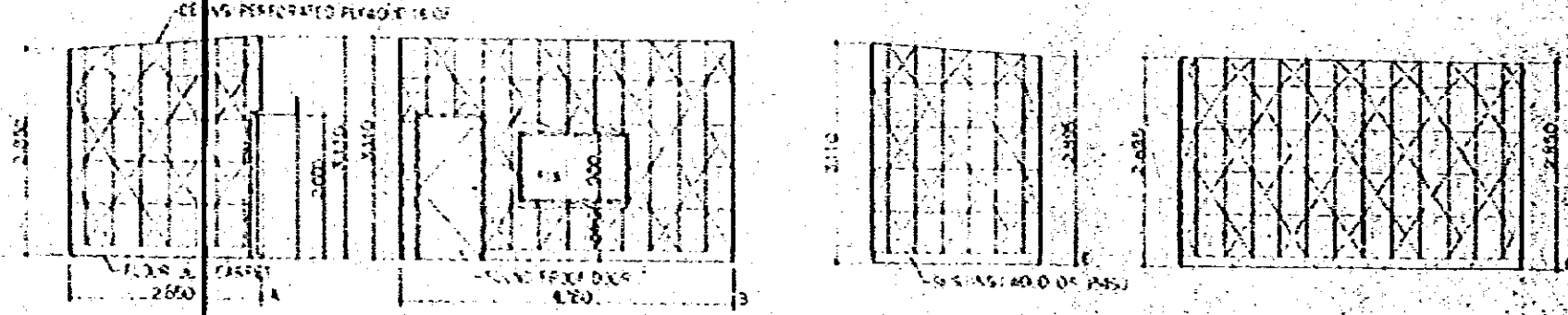


INTERIOR ELEVATION 3  
[NEWS STUDIO]

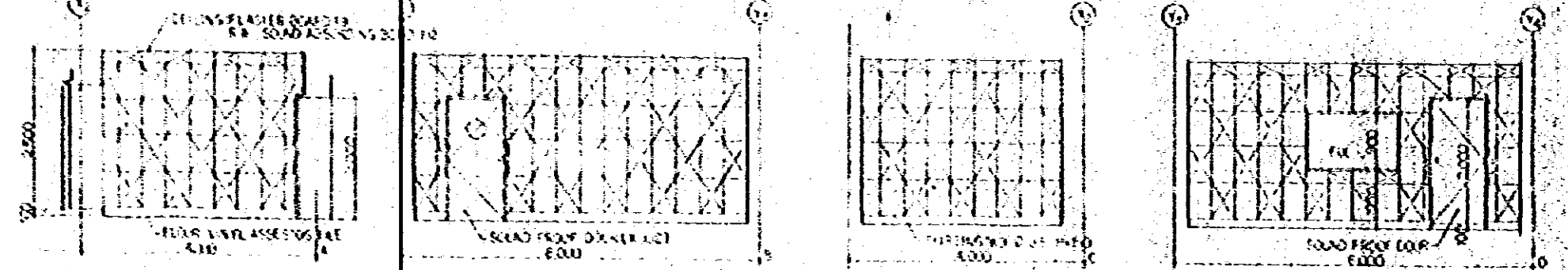


- WALL FINISH
- PERFORATED FLANGE 16 EI-150 43x60
  - PERFORATED FLANGE 16 EI-20 43x60

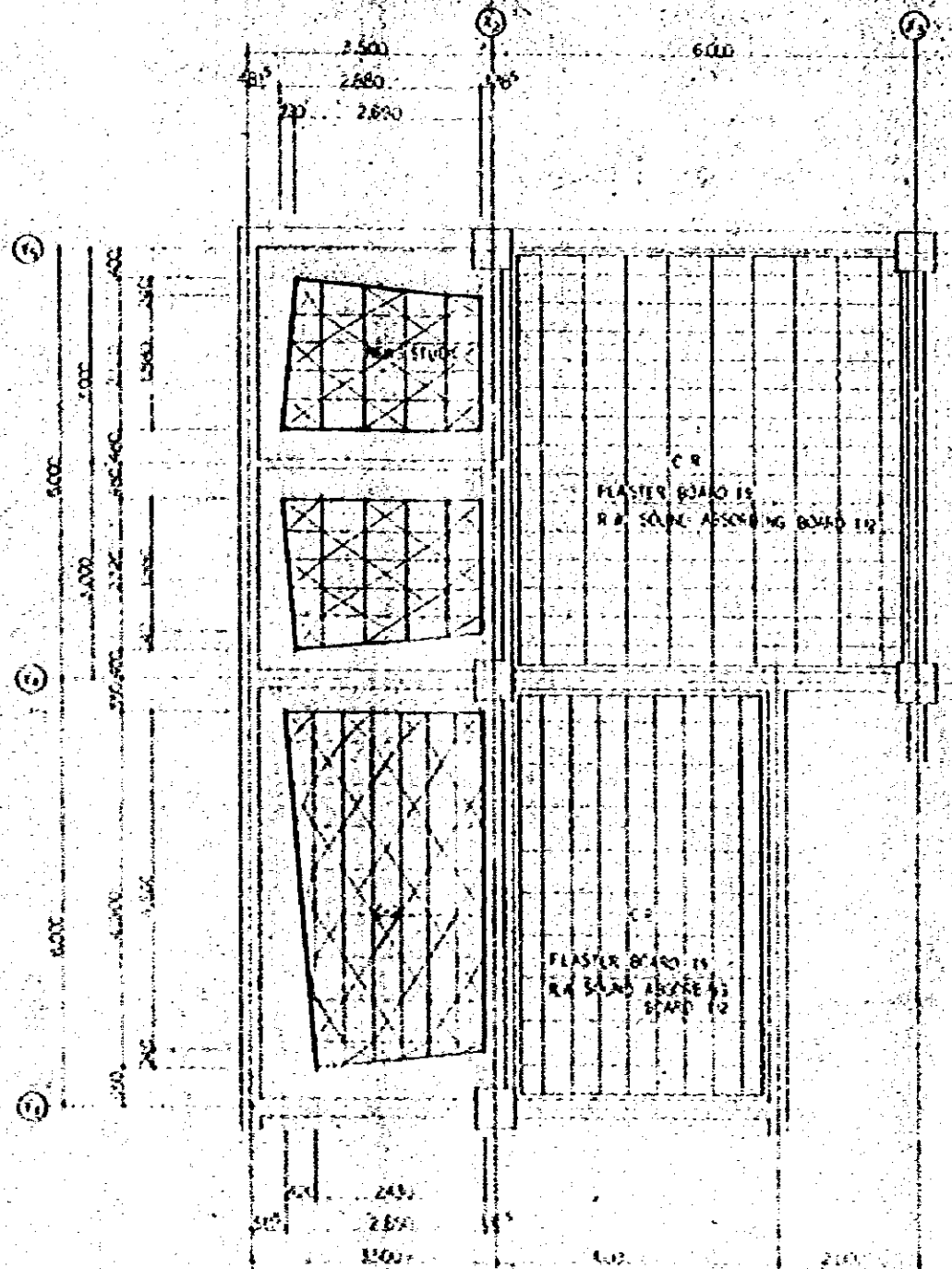
INTERIOR ELEVATION 4  
[NEWS STUDIO]



INTERIOR ELEVATION 5  
[NEWS STUDIO]



INTERNATIONAL BROADCASTING CORPORATION  
 RADIO BROADCAST BUILDING  
 DETAIL PLAN & INTERIOR ELEVATION  
 OF CONTROL ROOM - 2 ETC.  
 DRAWN BY: [Signature]  
 CHECKED BY: [Signature]  
 DATE: [Date]  
 D.P.C. DESIGN ENGINEERING CONSULTANTS LTD.

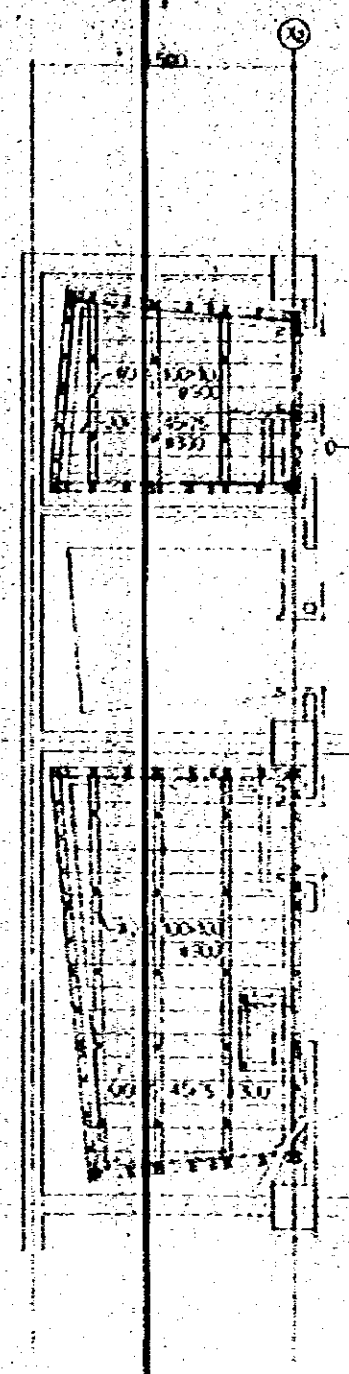


PLASTER BOARD IS  
R. R. SOME ASSUMING BOARD IS

PLASTER BOARD IS  
R. R. SOME ASSUMING BOARD IS

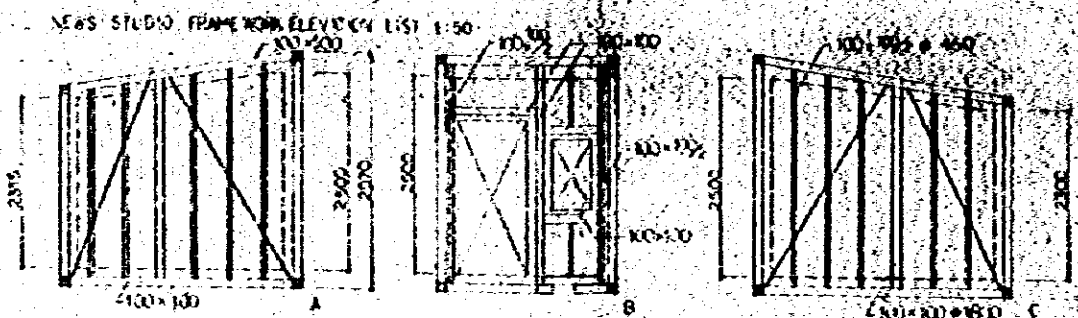
REFLECTED CEILING PLAN 1:20

- PERFORATED FRAME NO. 84-100 4X-100
- PERFORATED FRAME NO. 91-20 4X-100

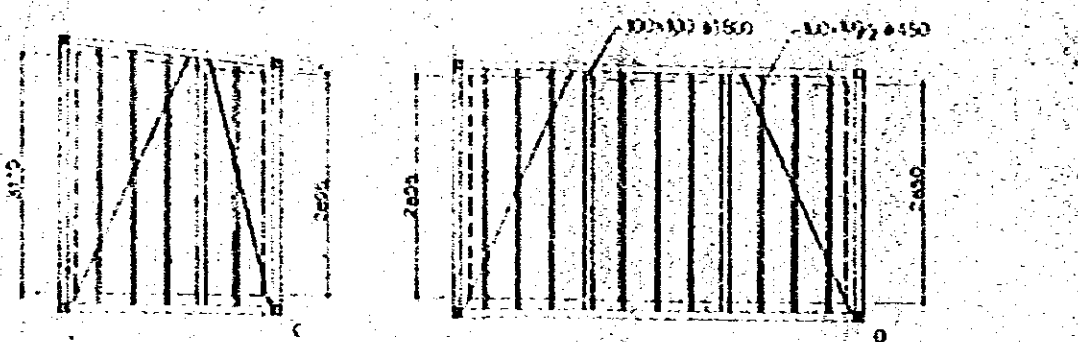
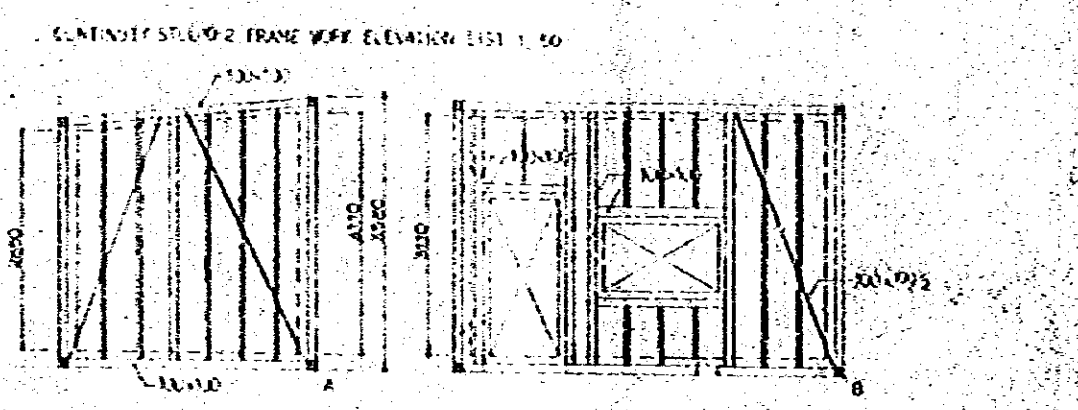


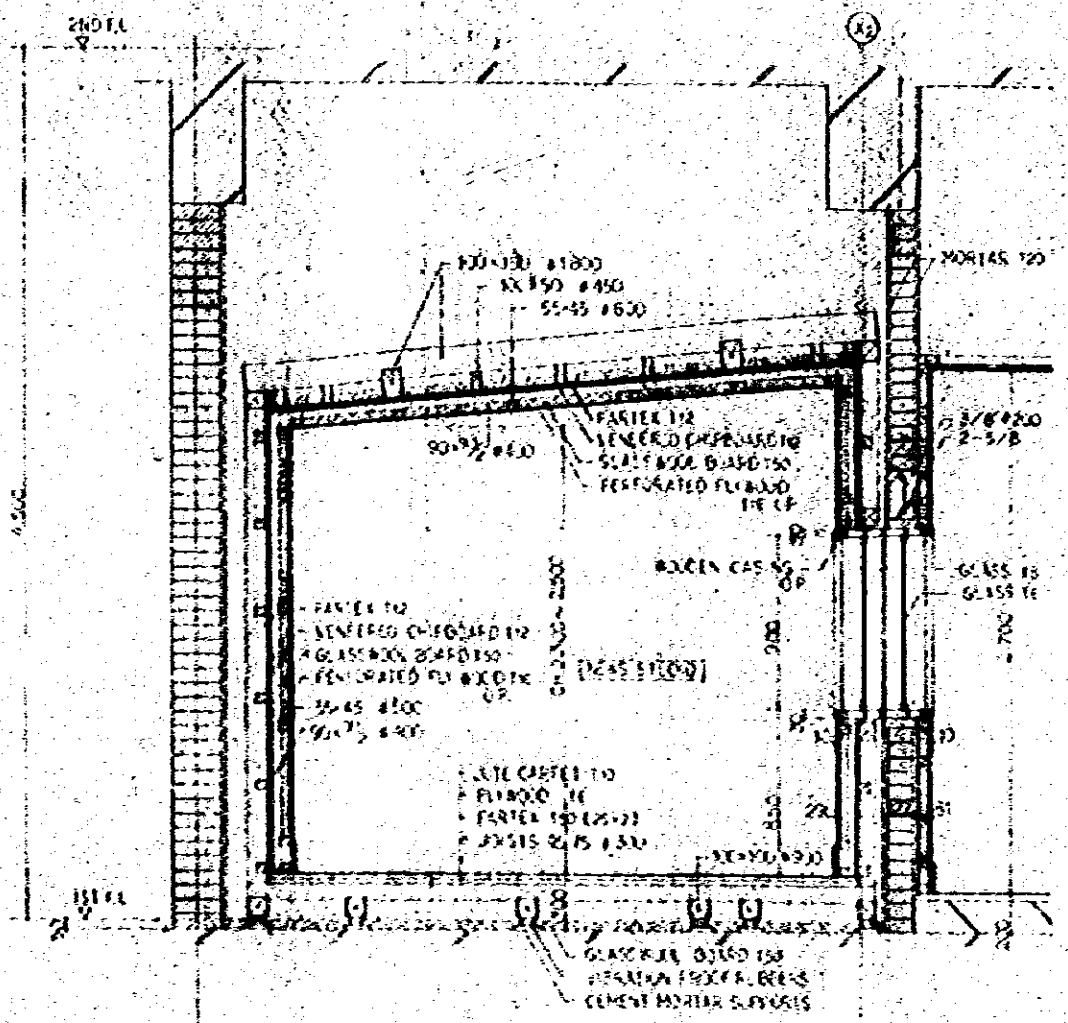
FRAMING PLAN 1:50

VIBRATION PROOF RUBBERS			
SYMBOL	TYPE	PCS	
●	MED-55	8	
○	MED-70	15	

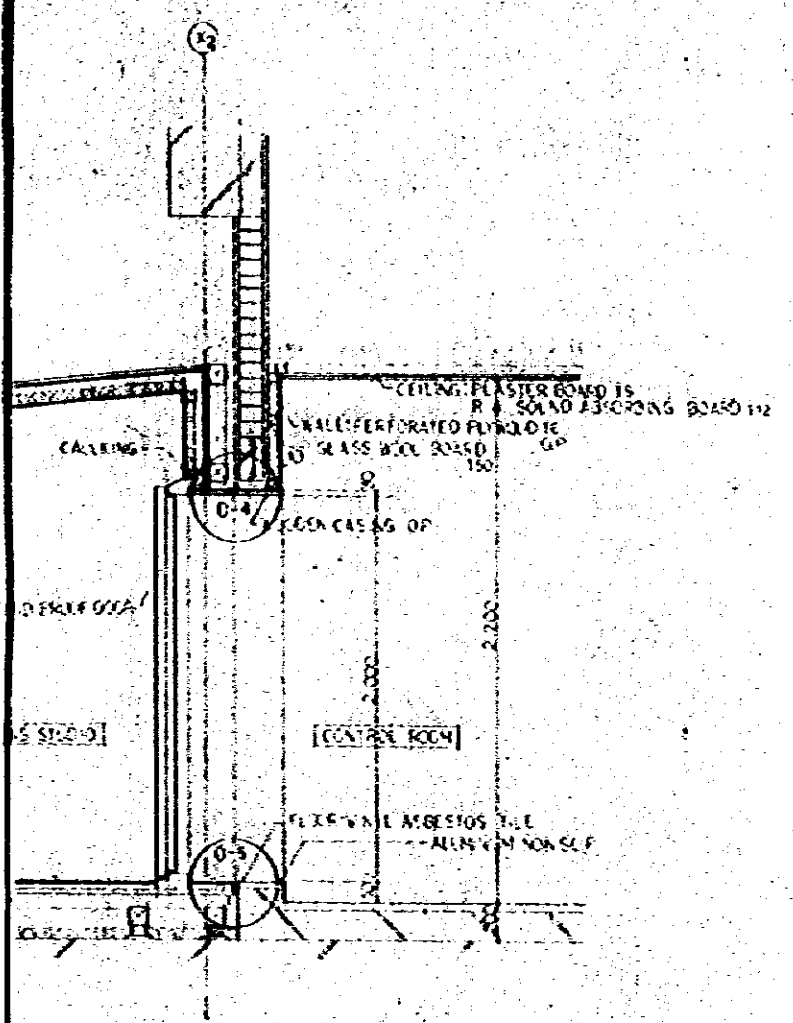


VIBRATION PROOF RUBBERS			
SYMBOL	TYPE	PCS	
●	MED-55	8	
○	MED-70	15	

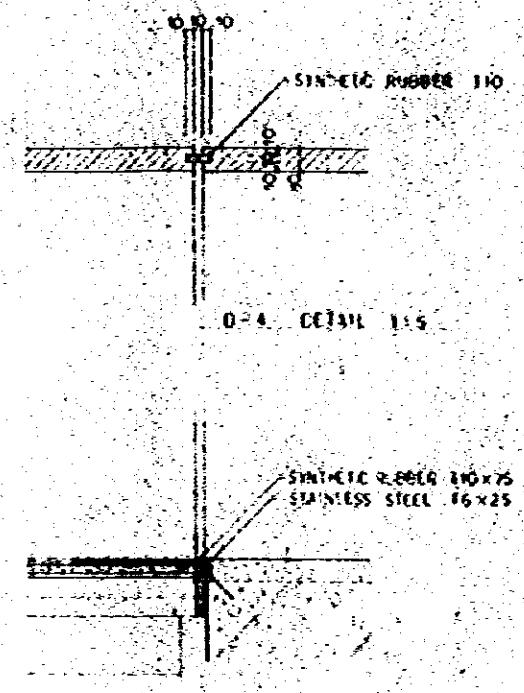




VERTICAL SECTION 1120

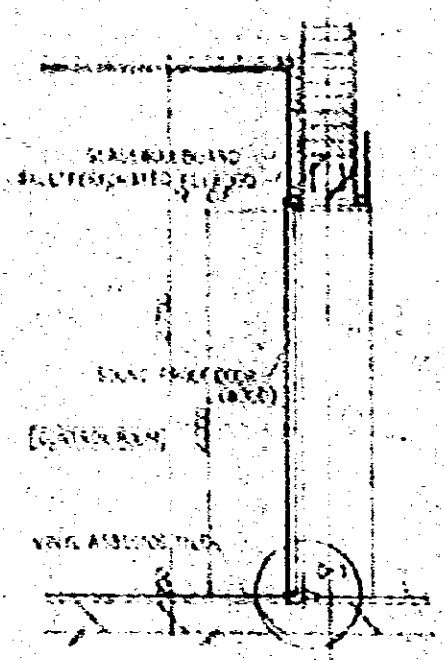


VERTICAL SECTION 1120

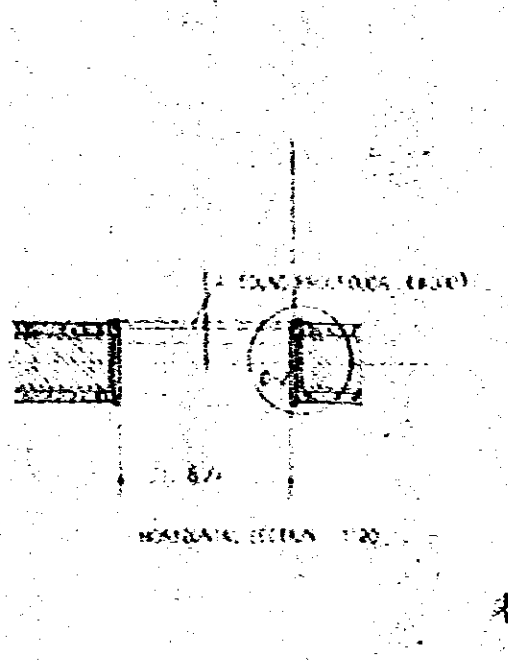


0-4 DETAIL 115

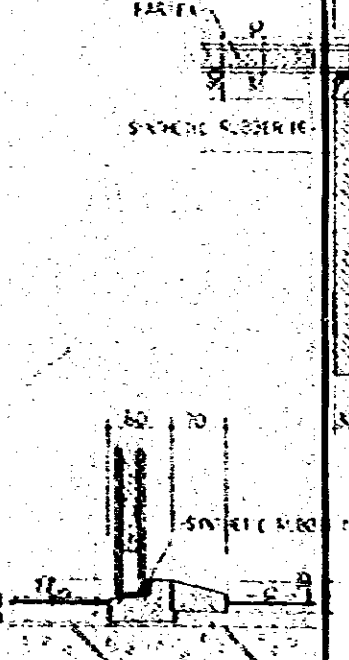
0-5 DETAIL 115



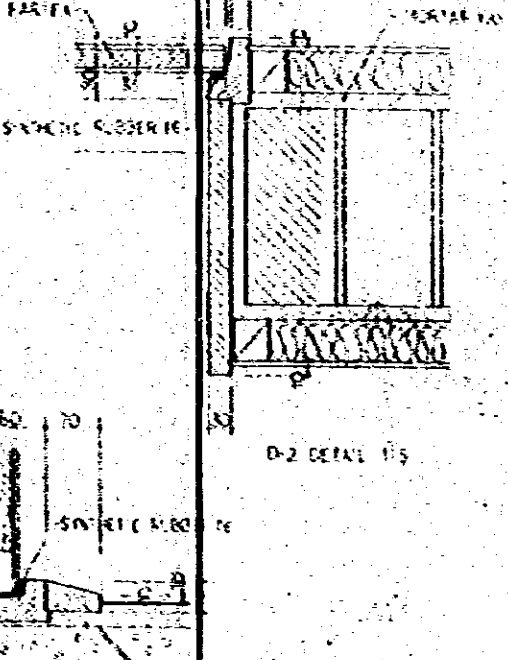
VERTICAL SECTION 1120



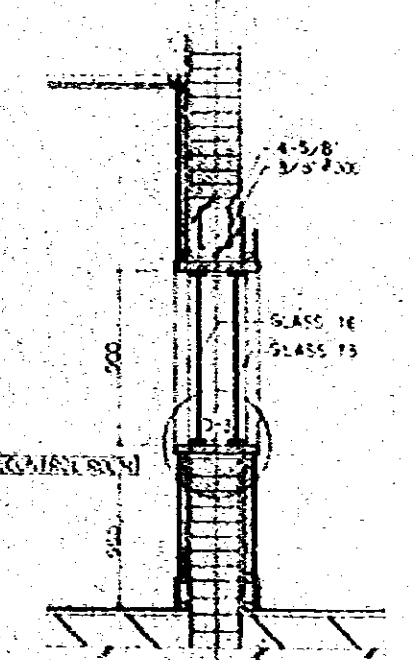
HORIZONTAL SECTION 1120



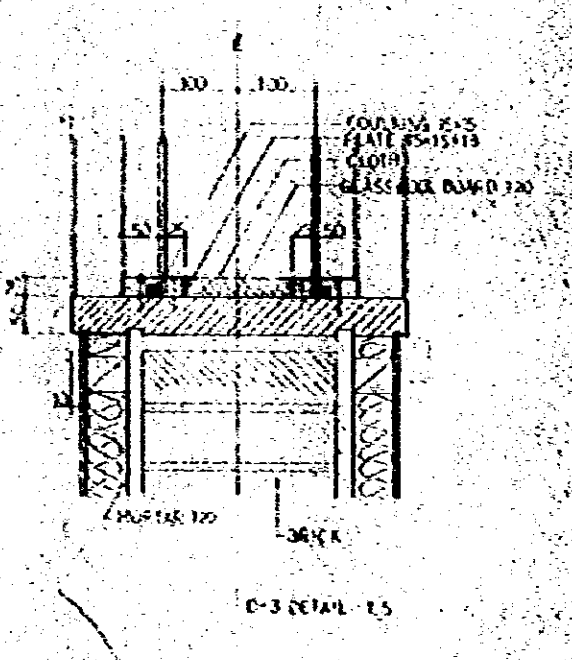
0-1 DETAIL 115



0-2 DETAIL 115



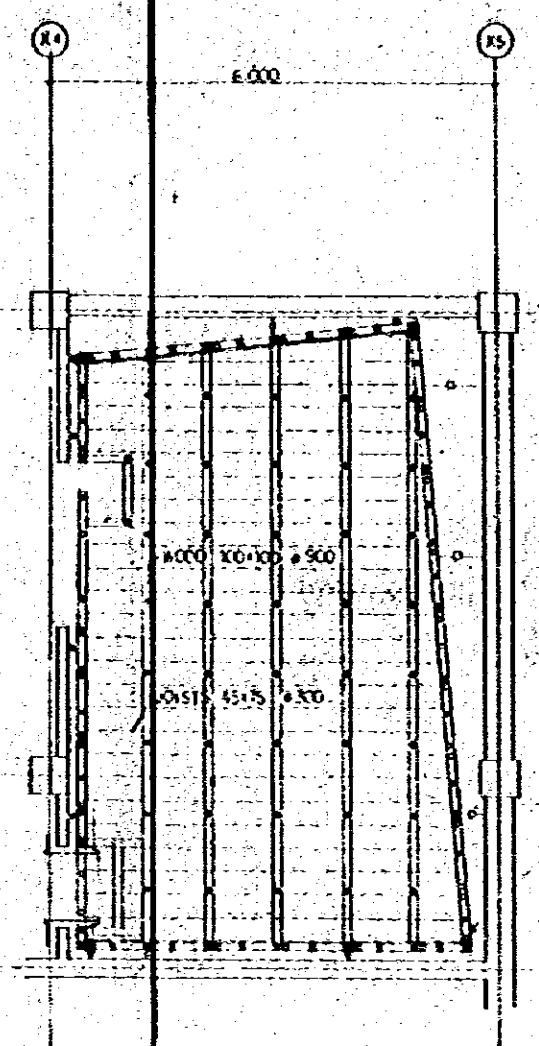
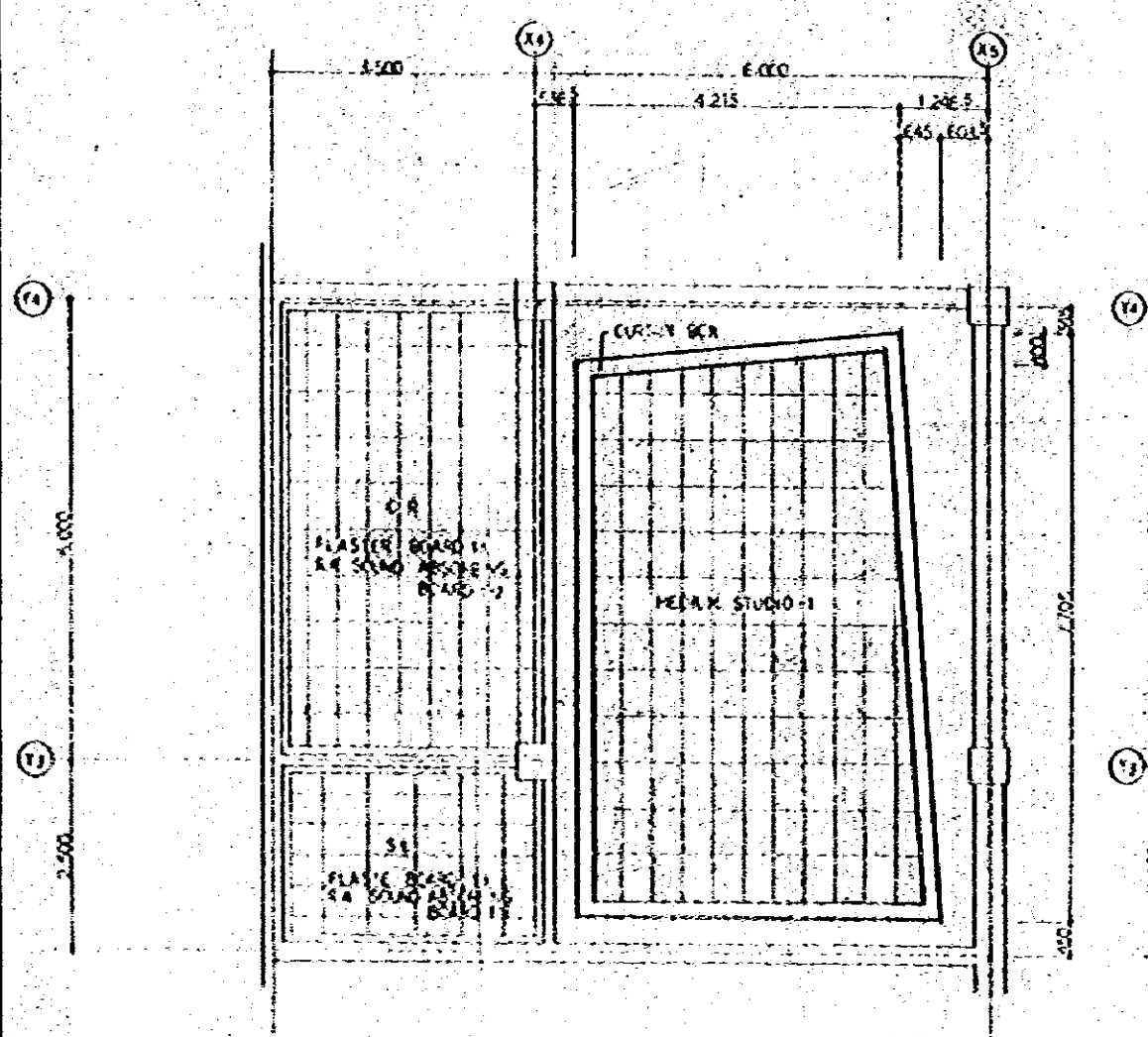
VERTICAL SECTION 1120



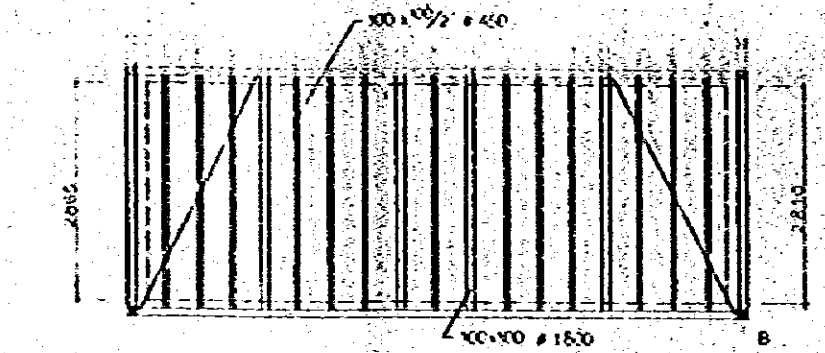
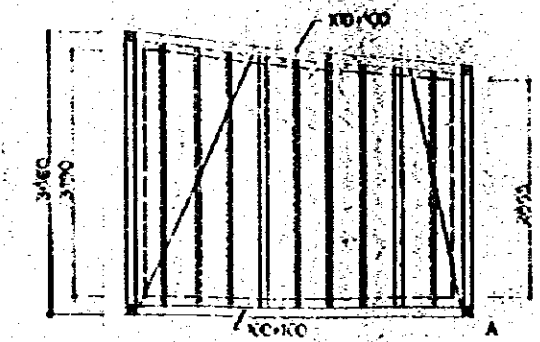
0-3 DETAIL 115

Project	NATIONAL BROADCASTING HOUSE OF RADIO BUREAU (NHK)	Date	8-27-39
Vertical Section	OF NEWS STUDIO	Scale	1/20
Drawn by	K.S.	Checked by	K.S.
JECB JAPAN ENGINEERING CONSULTANTS CO., LTD.			





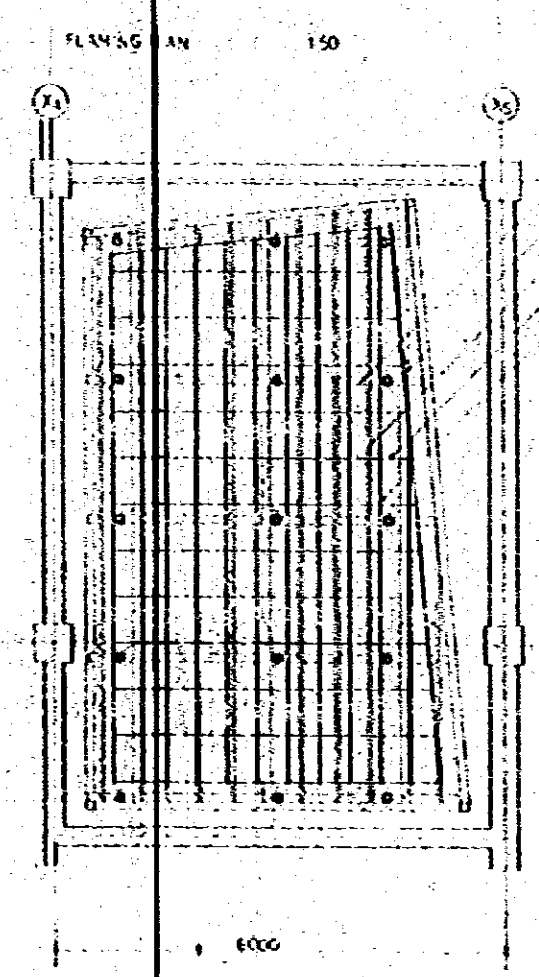
MEDIUM STUDIO-1 FRAME WORK ELEVATION LIST 1150



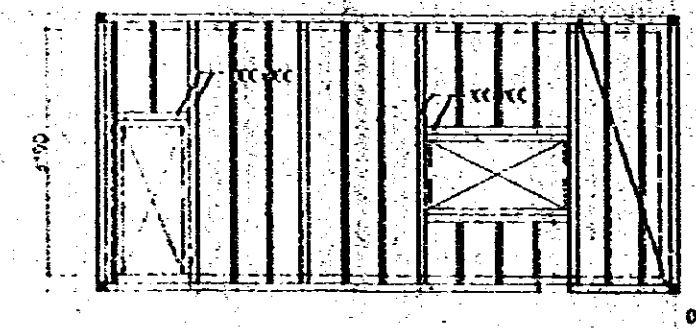
REFLECTED CEILING PLAN 1150

- PULVERIZED FIBER BOARD EA-150 40x600
- VENEERED OAK BOARD EA-CP 40x600

VIBRATION PROOF FLUSERS		
SYMBOL	TYPE	PCS
●	MEOL-55	42
○	MEOL-70	31
△	MIO-RC-20H	10
□	MS-6E	15

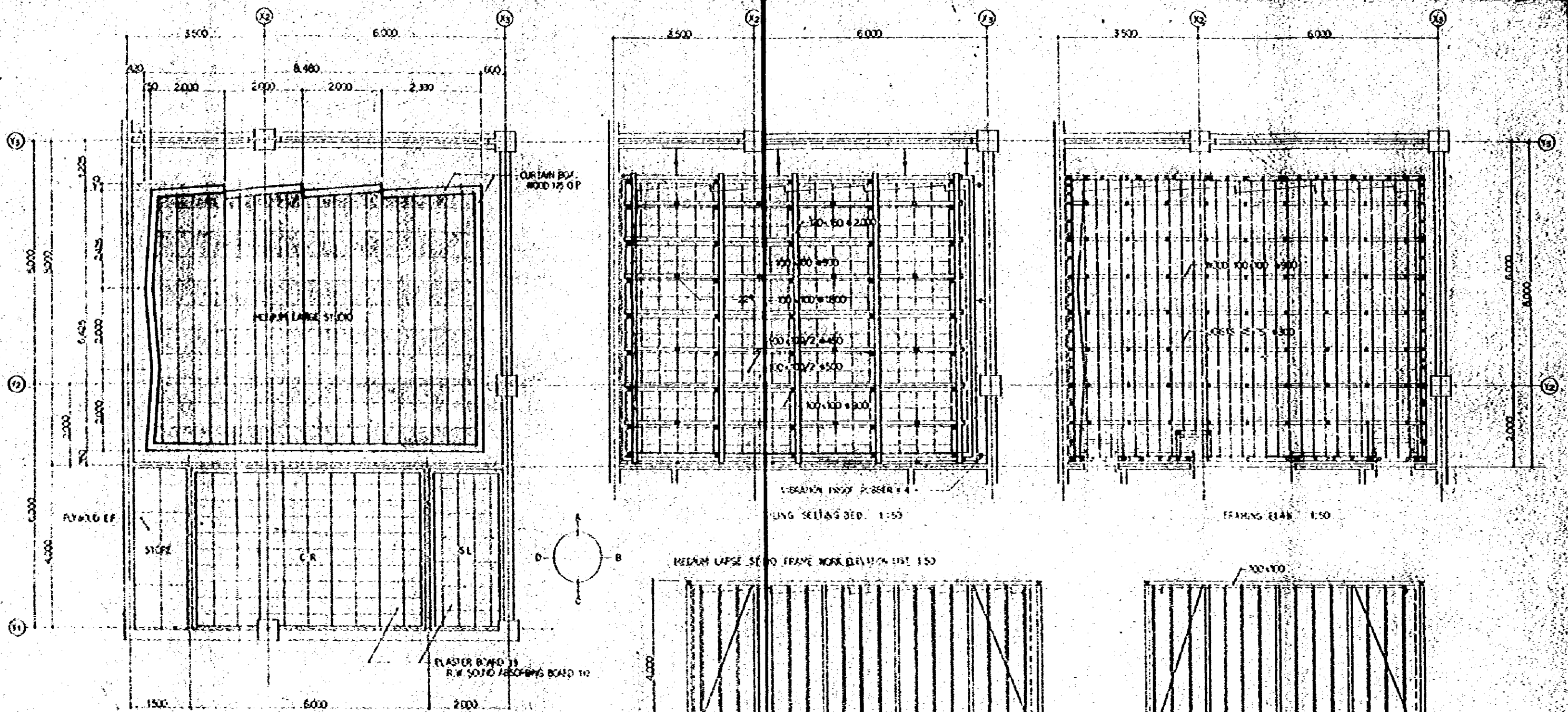


- 150 x 150 @ 12.0
- 100 x 150 @ 12.0
- 100 x 100/2 @ 15.0
- 50 x 90/2 @ 10.0
- 55 x 15 @ 15.0



CEILING FRAMEWORK 1150

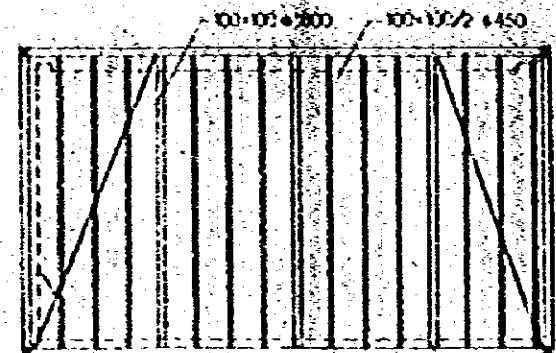
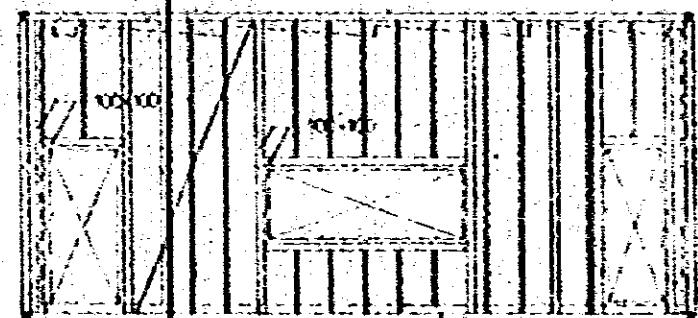
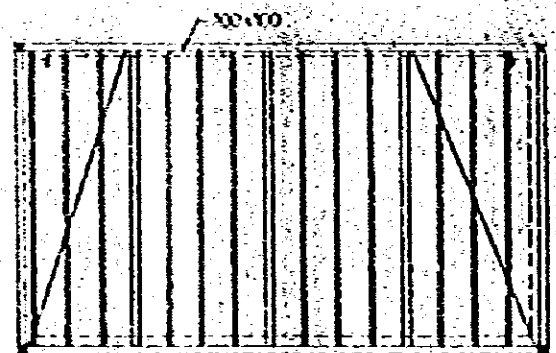
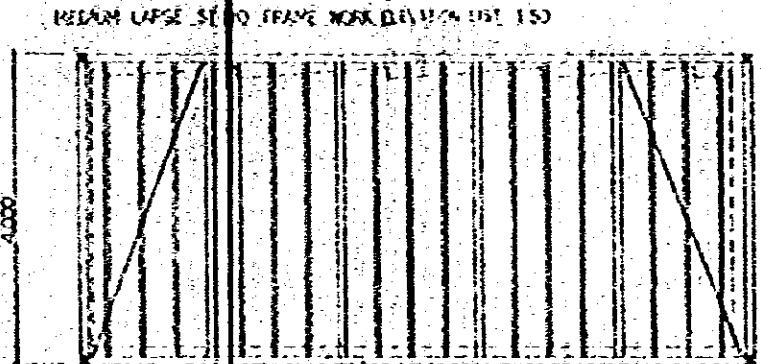


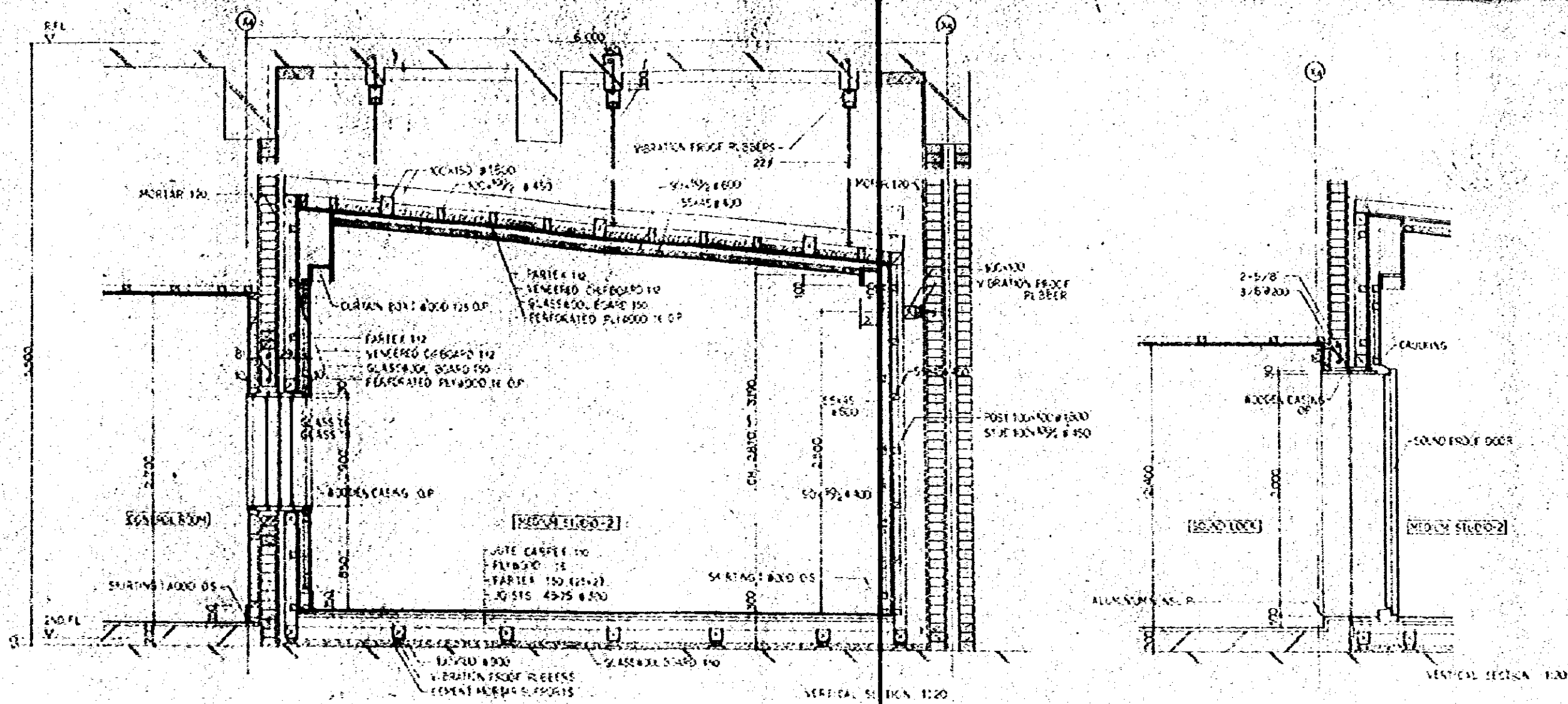


REFLECTED CEILING PLAN 1:50

  REFLECTED PLASTER TO OP (L. 20 400x600)  
  VENEERED G.P. BOARD 1/2\"/>

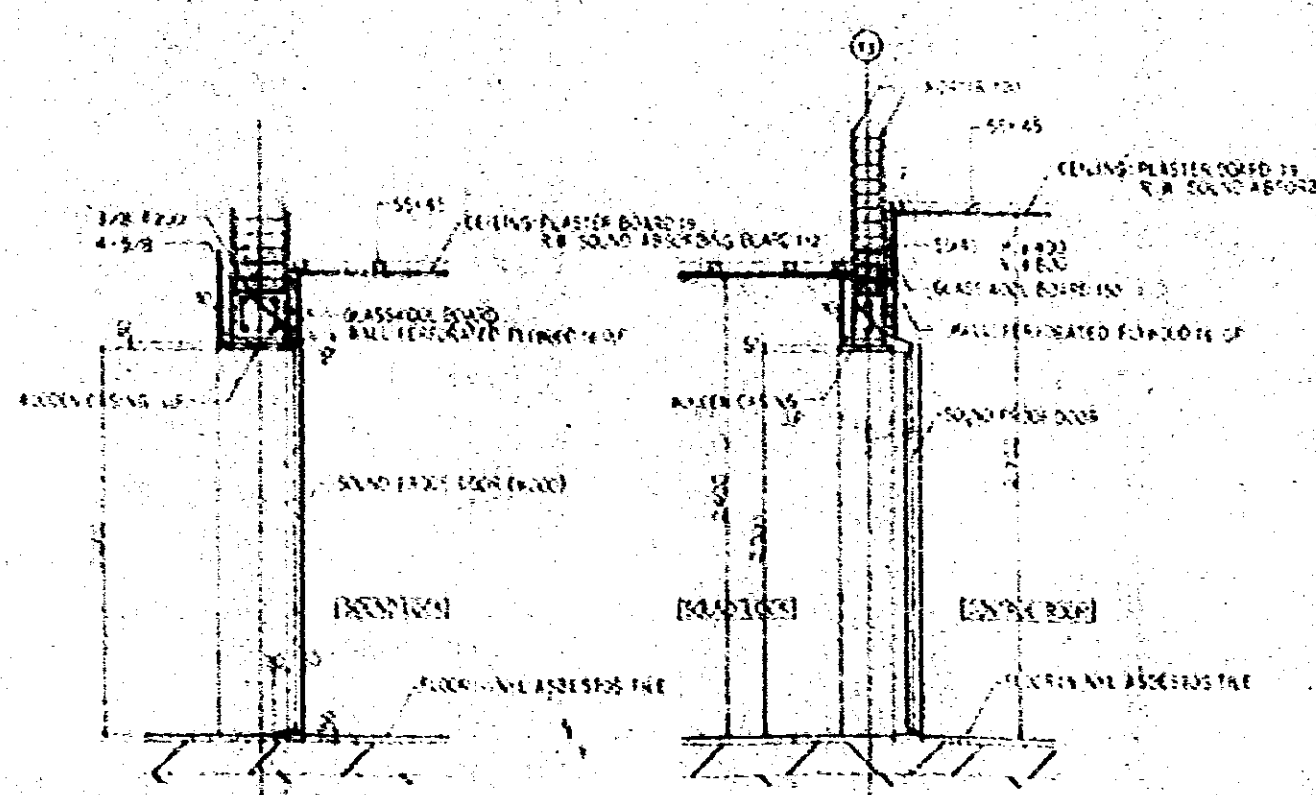
VIBRATION PROOF MATTRES		
SIZE	TYPE	PCS
•	MED - 55	65
•	MED - 50	31
•	MED - 60-20	12
•	ISO - AC	15





VERTICAL SECTION 1:20

VERTICAL SECTION 1:20

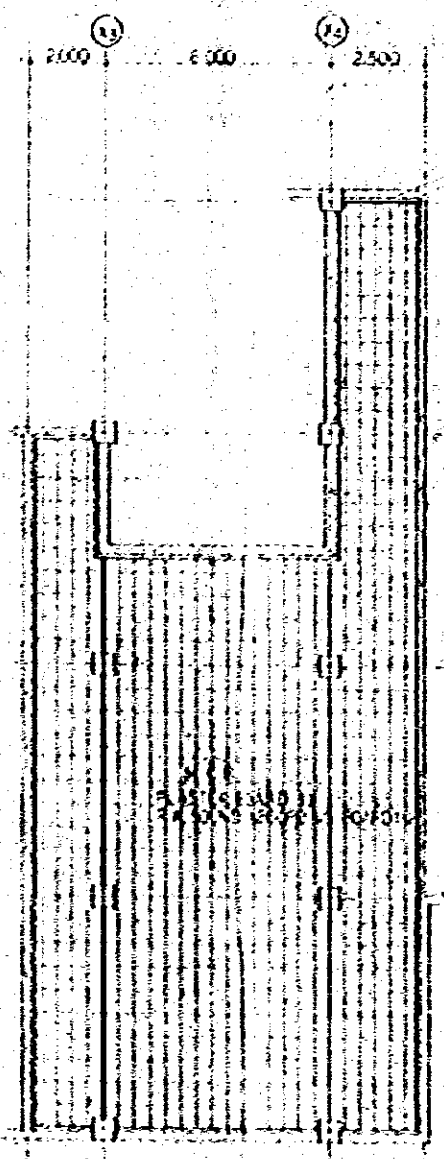


VERTICAL SECTION 1:20

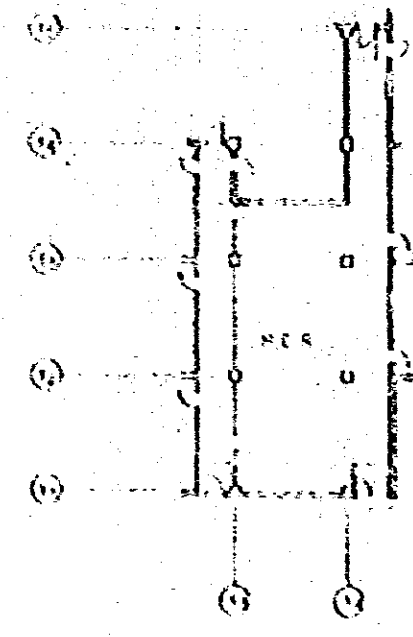
Project	NATIONAL BROADCASTING HOUSE OF RADIO BANGKOK	Sheet No.	A-01-44
Section	VERTICAL SECTION OF MEDIUM STUDIO	Date	1/20
Scale	1:20	Drawn by	KS
Checked by	(Signature)	Approved by	(Signature)
DBE JAPAN ENGINEERING CONSULTANTS CO., LTD.			





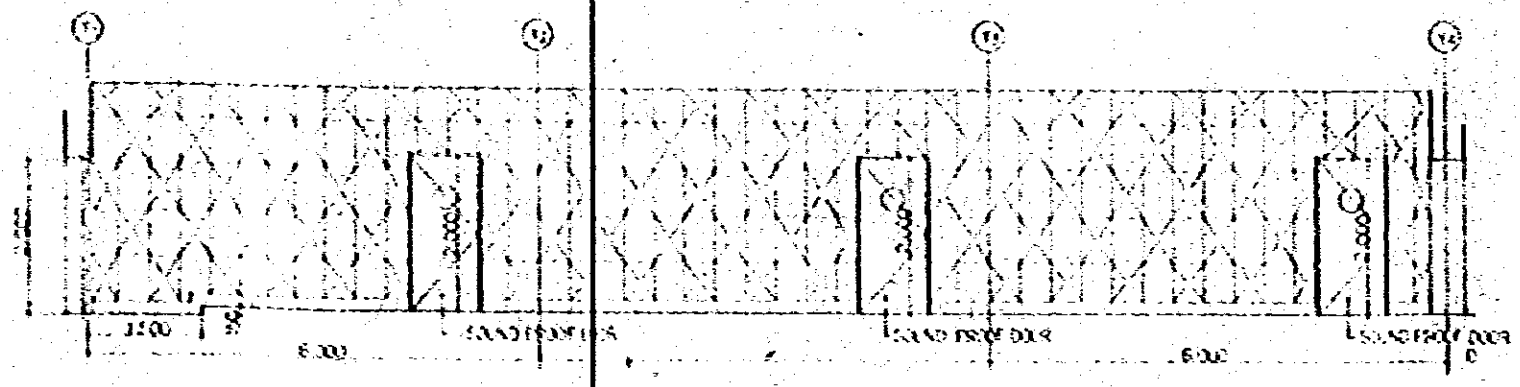
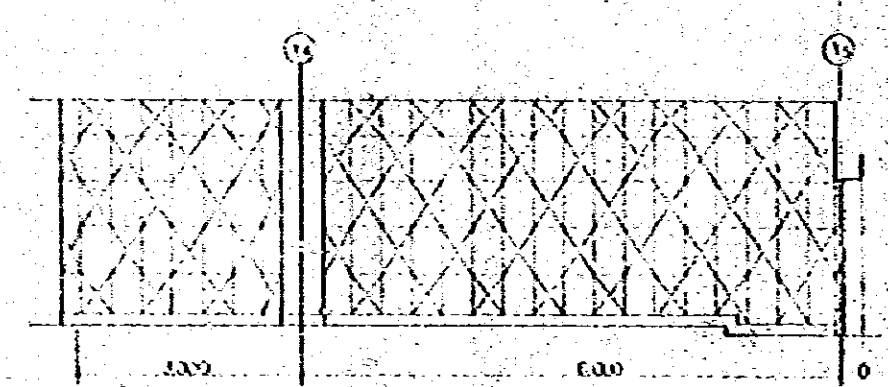
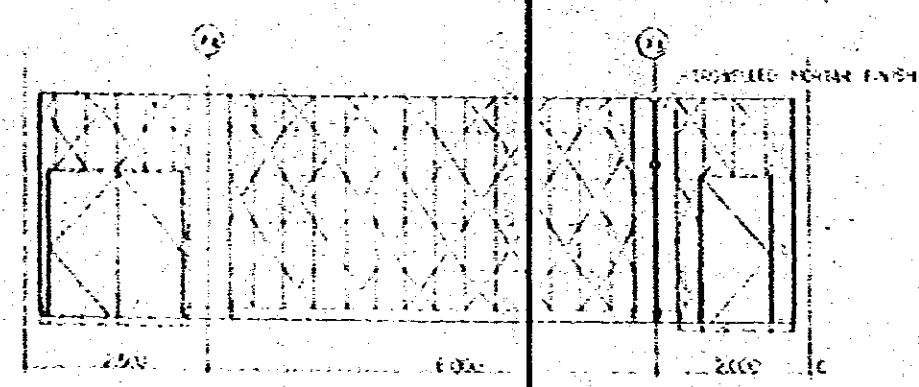
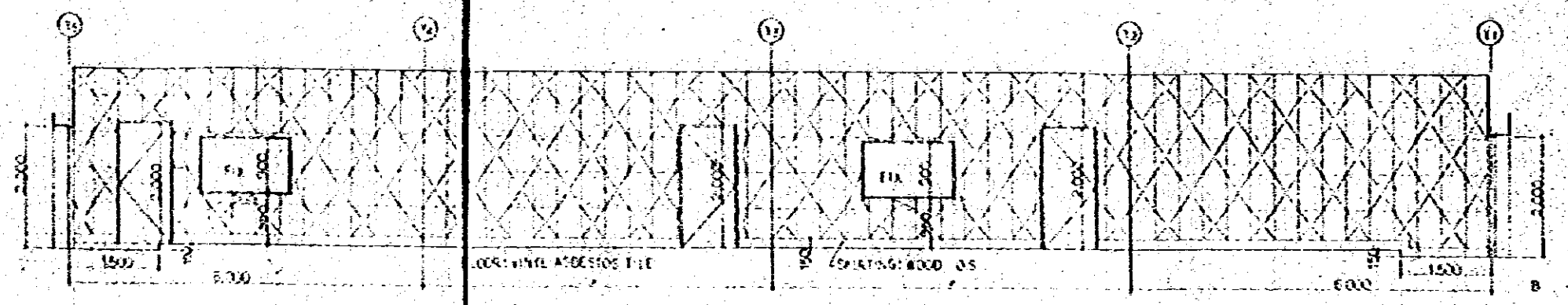
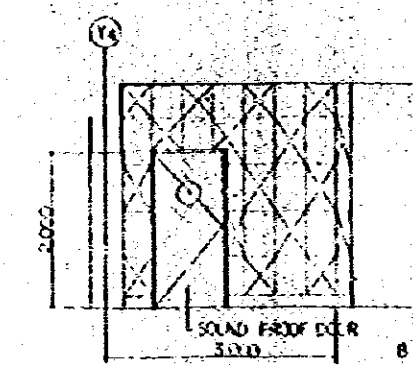
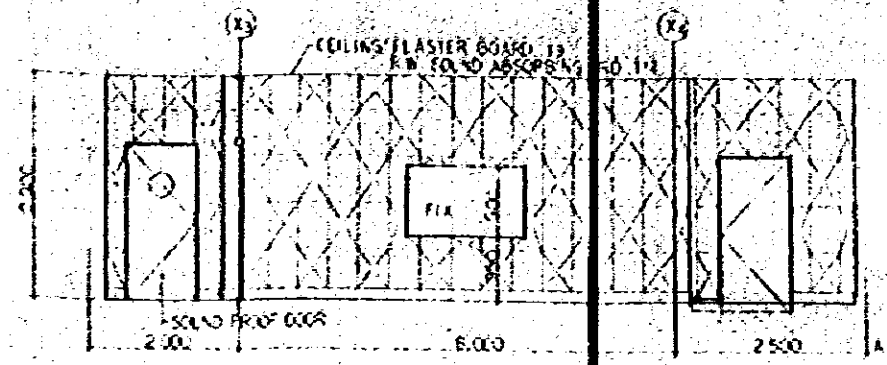


REFLECTED CEILING PLAN 1:50



SEE PLAN

MASTER CONTROL ROOM INTERIOR ELEVATION 1:50



- ALL FINISH
- PERFORATED PLASTERBOARD TO BS-150 300x600 OF
  - PERFORATED PLASTERBOARD TO BS-20 400x600 OF