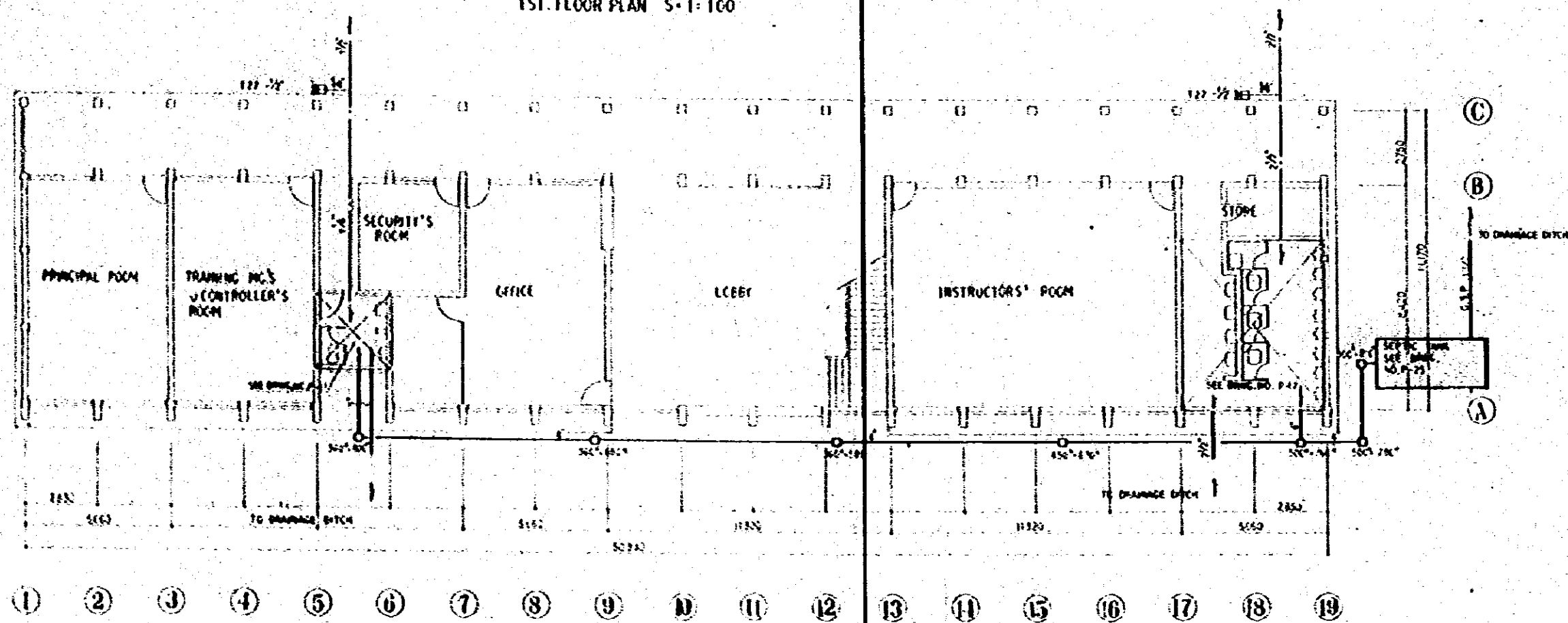


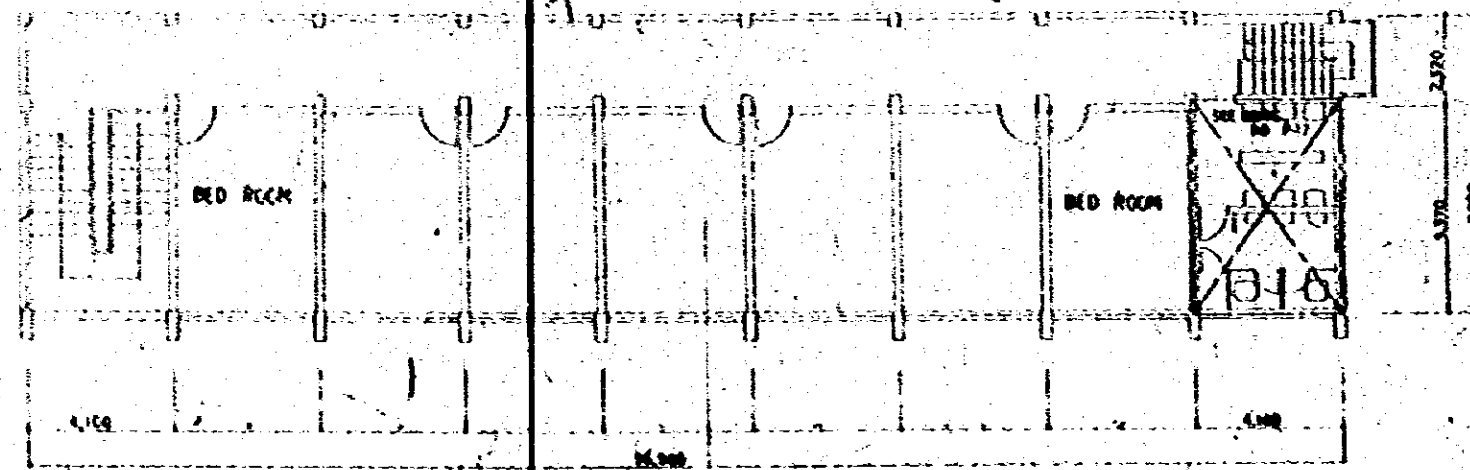
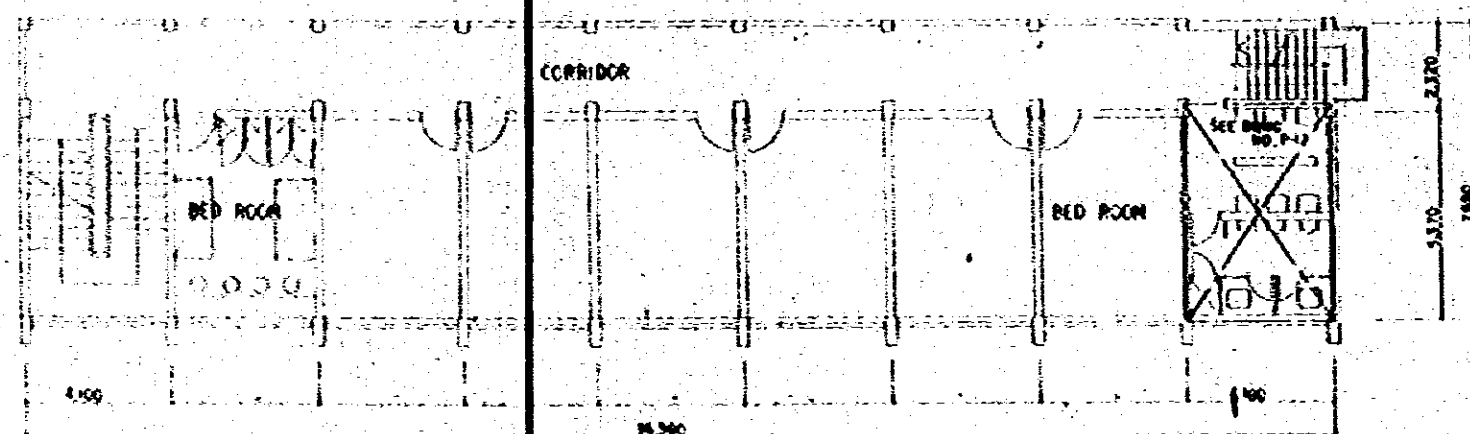
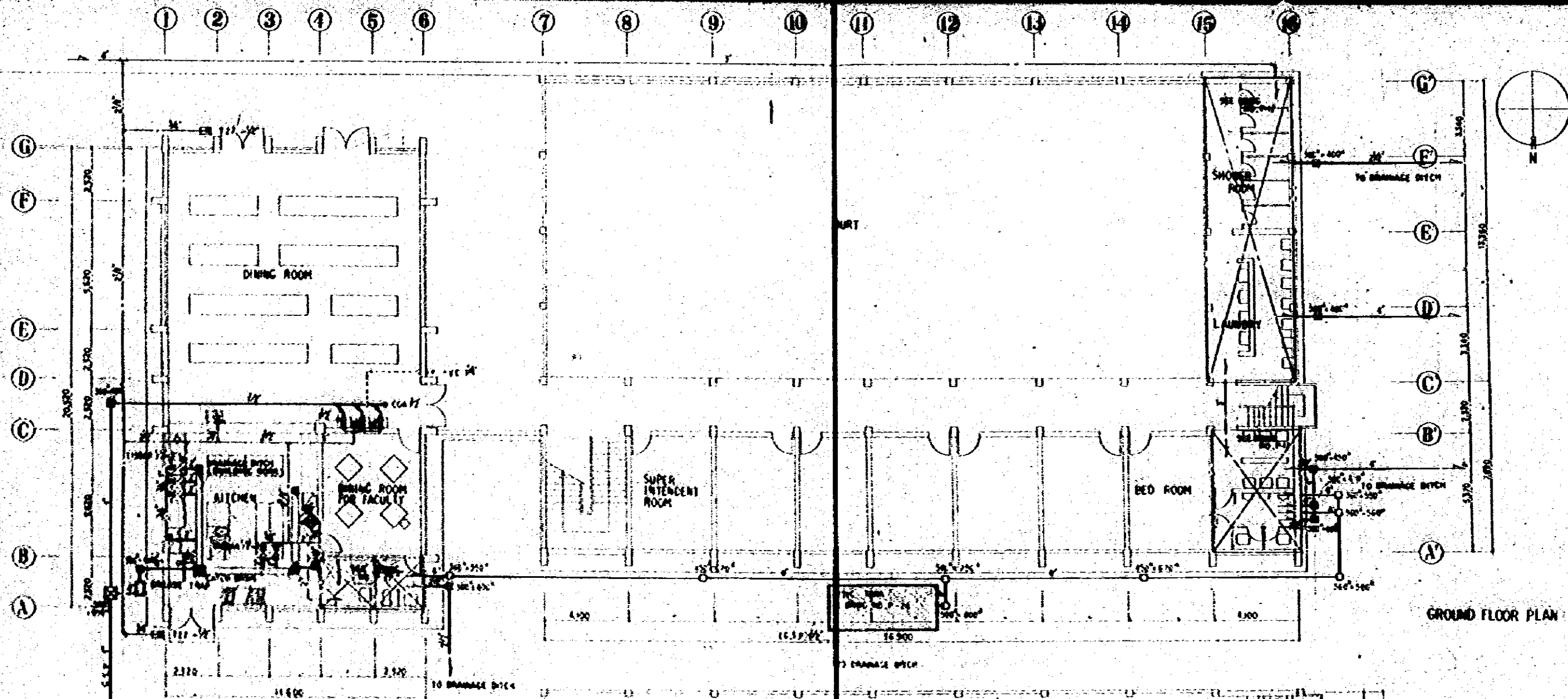
1ST FLOOR PLAN S-1-100



GROUND FLOOR PLAN S-1-100

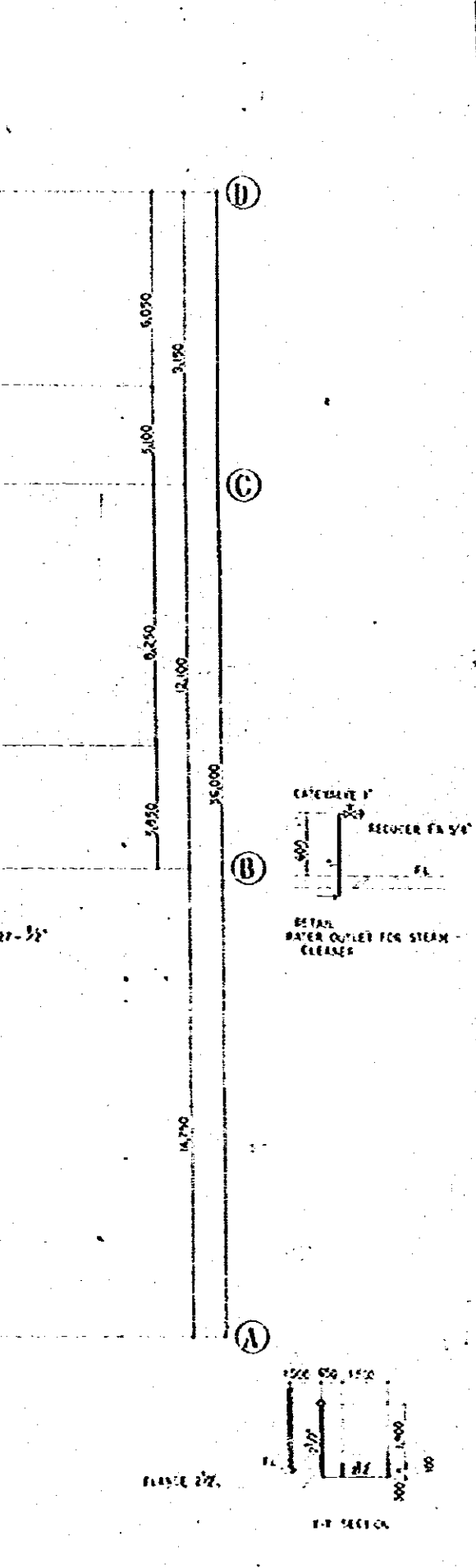
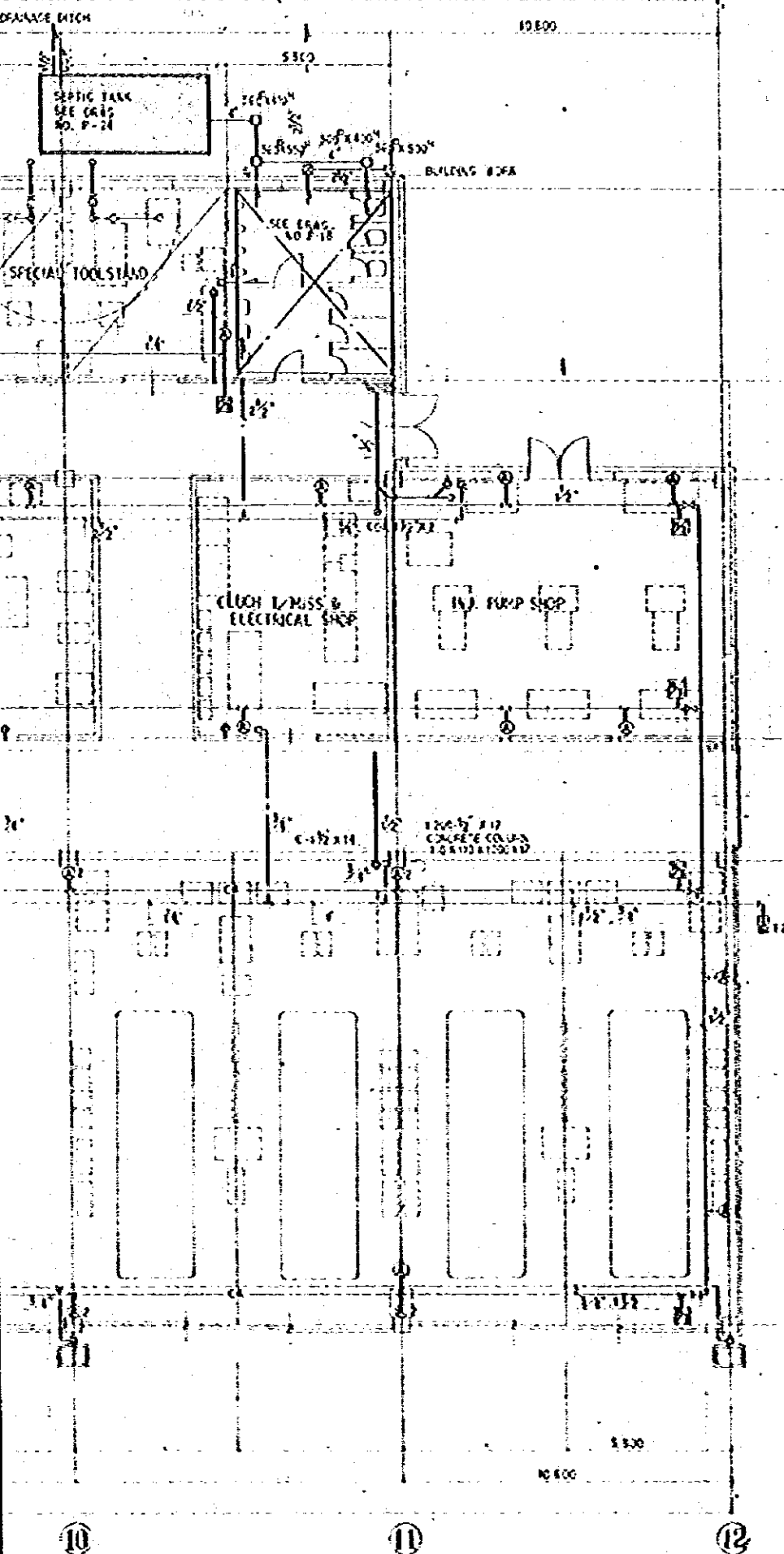
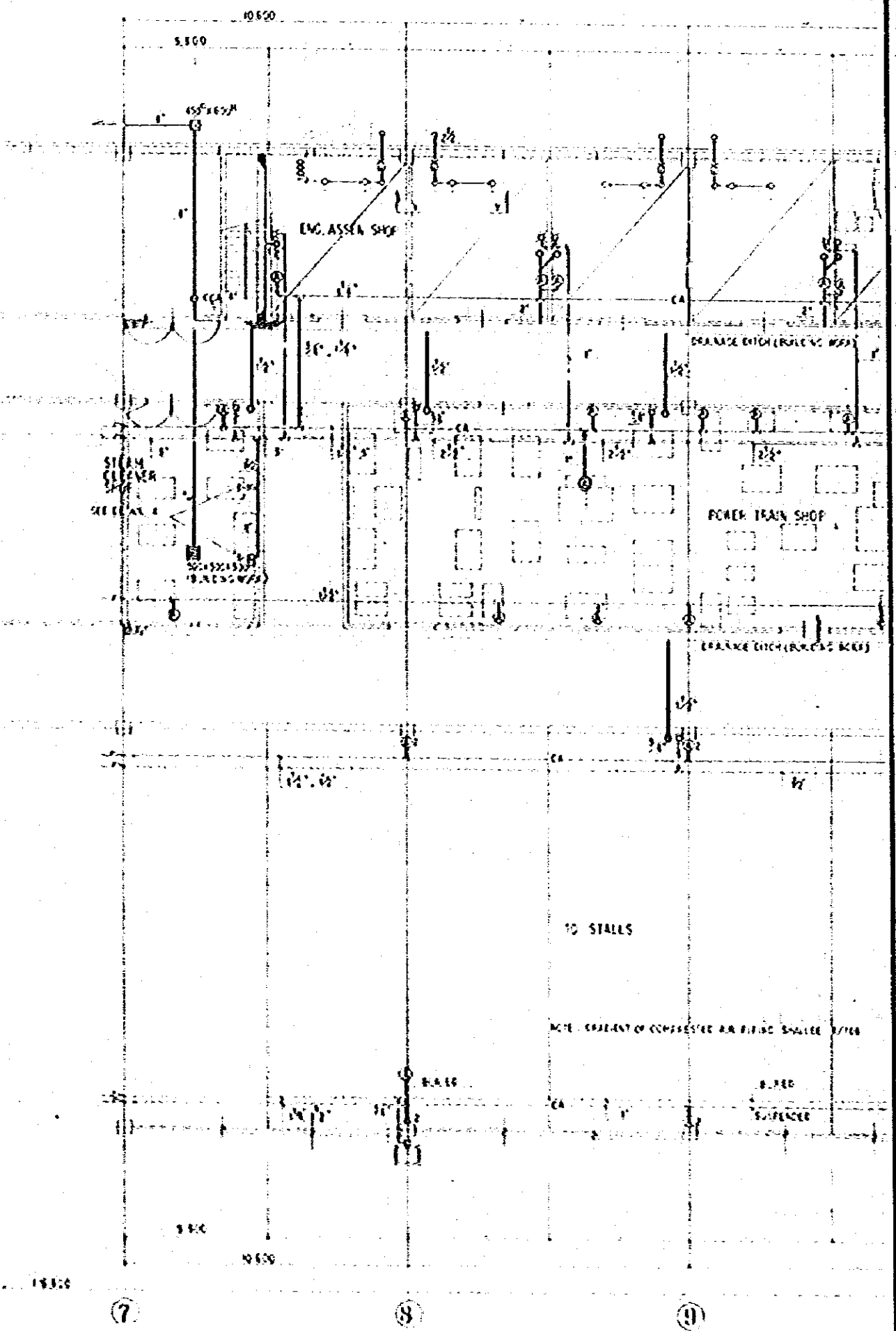
CLASS ROOM AND OFFICE

CONSTRUCTION PROJECT		10/78
AUTOMOBILE REPAIR MAINTENANCE WORKSHOP		1:100
TYPE OF DRAWING		P
PLUMBING		4
GROUND FLOOR & 1ST FLOOR PLAN OF CLASS ROOM AND OFFICE		
HONAN INTERNATIONAL CONSTRUCTION		



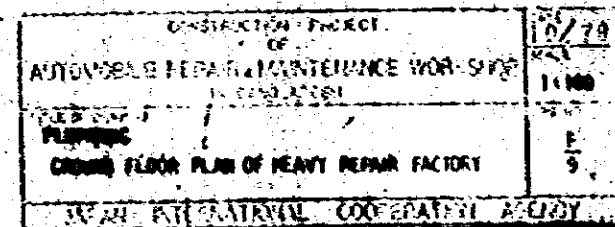
CONSTRUCTION PROJECT		10/70
AUTOMOBILE REPAIR MAINTENANCE WORKSHOP		1-100
PLUMBING		P. 5
GROUND FLOOR, 1ST FLOOR & 2ND FLOOR		
PLAN OF DORMITORY		
UNIVERSITY OF CALIFORNIA COOPERATION		

11E 600

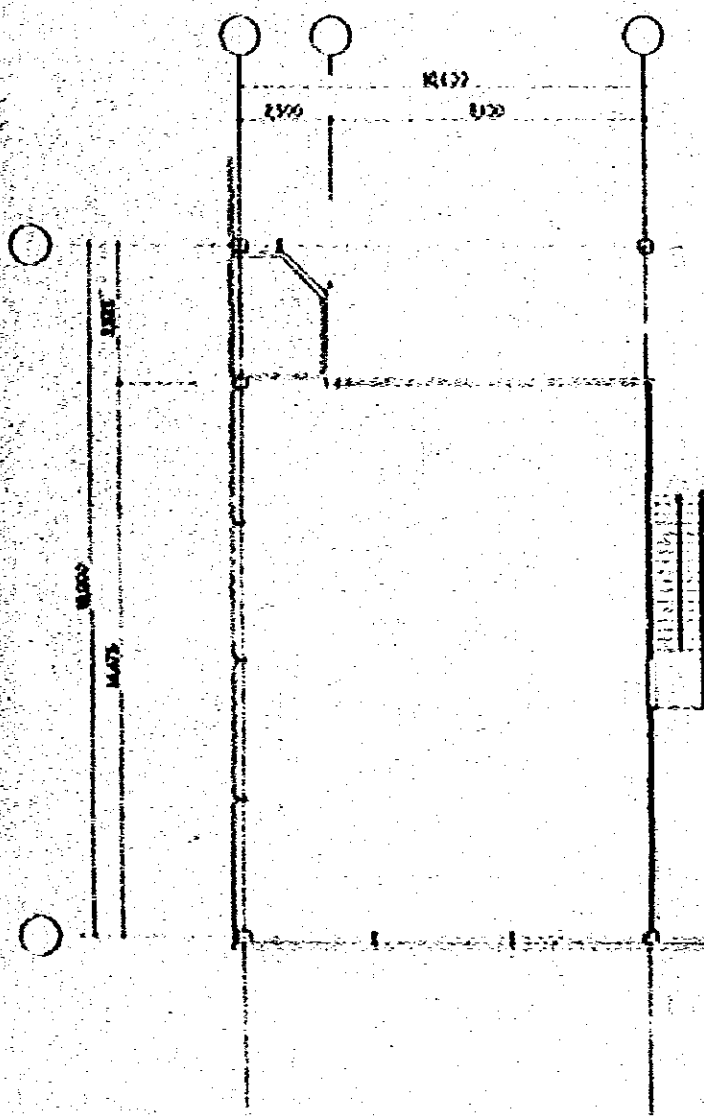


GROUND FLOOR PLAN OF HEAVY REPAIR FACTORYS - 1-100

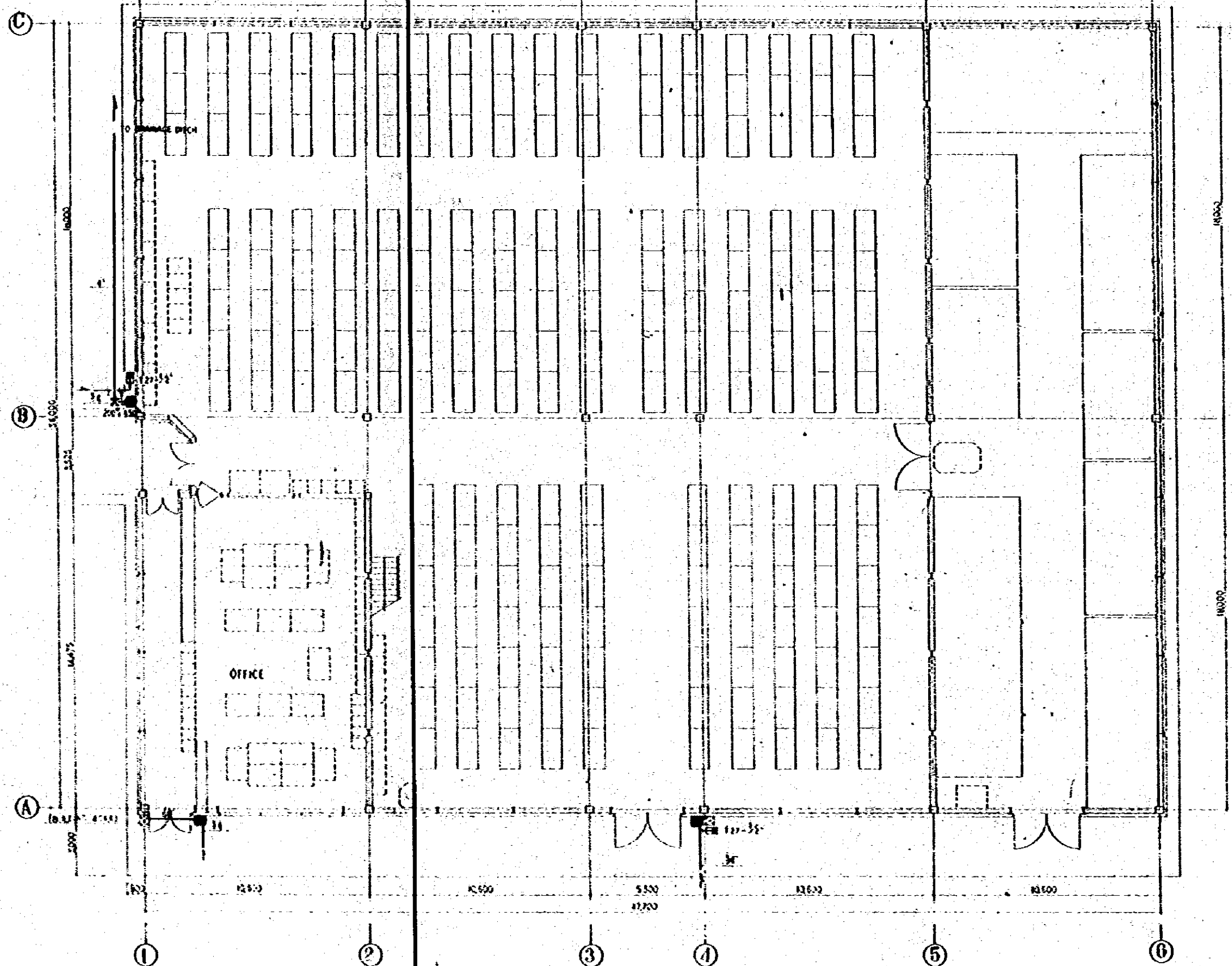
DATE OF PLAN	1/6/78
AUTHOR	ENGINEERING DEPARTMENT
DESIGNED BY	1-100
PLANNED BY	P. 6
GROUND FLOOR PLAN OF HEAVY REPAIR FACTORY	
SECTION	



GROUND FLOOR PLAN OF HEAVY REPAIR FACILITY S-1-100

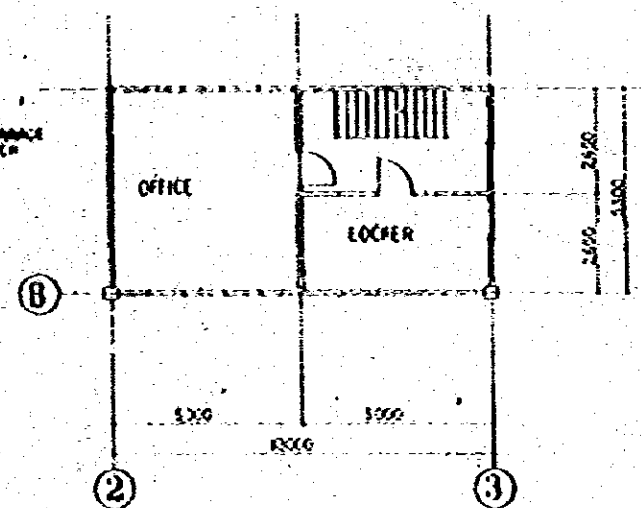
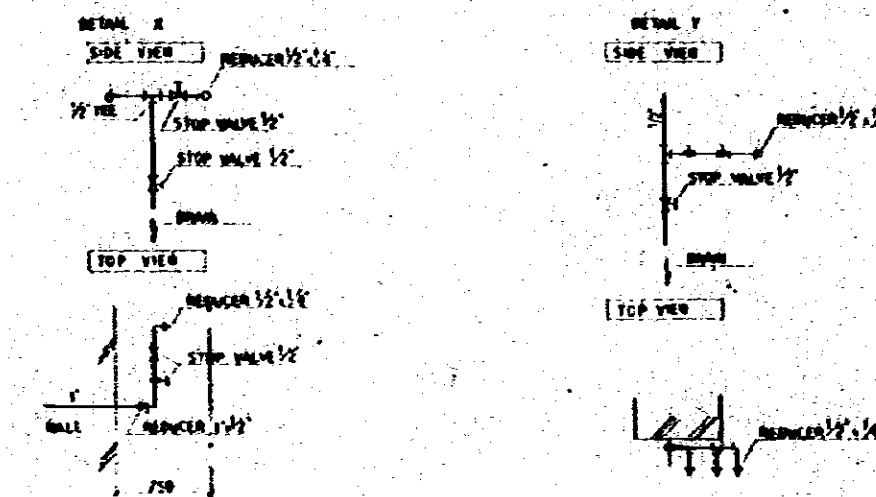
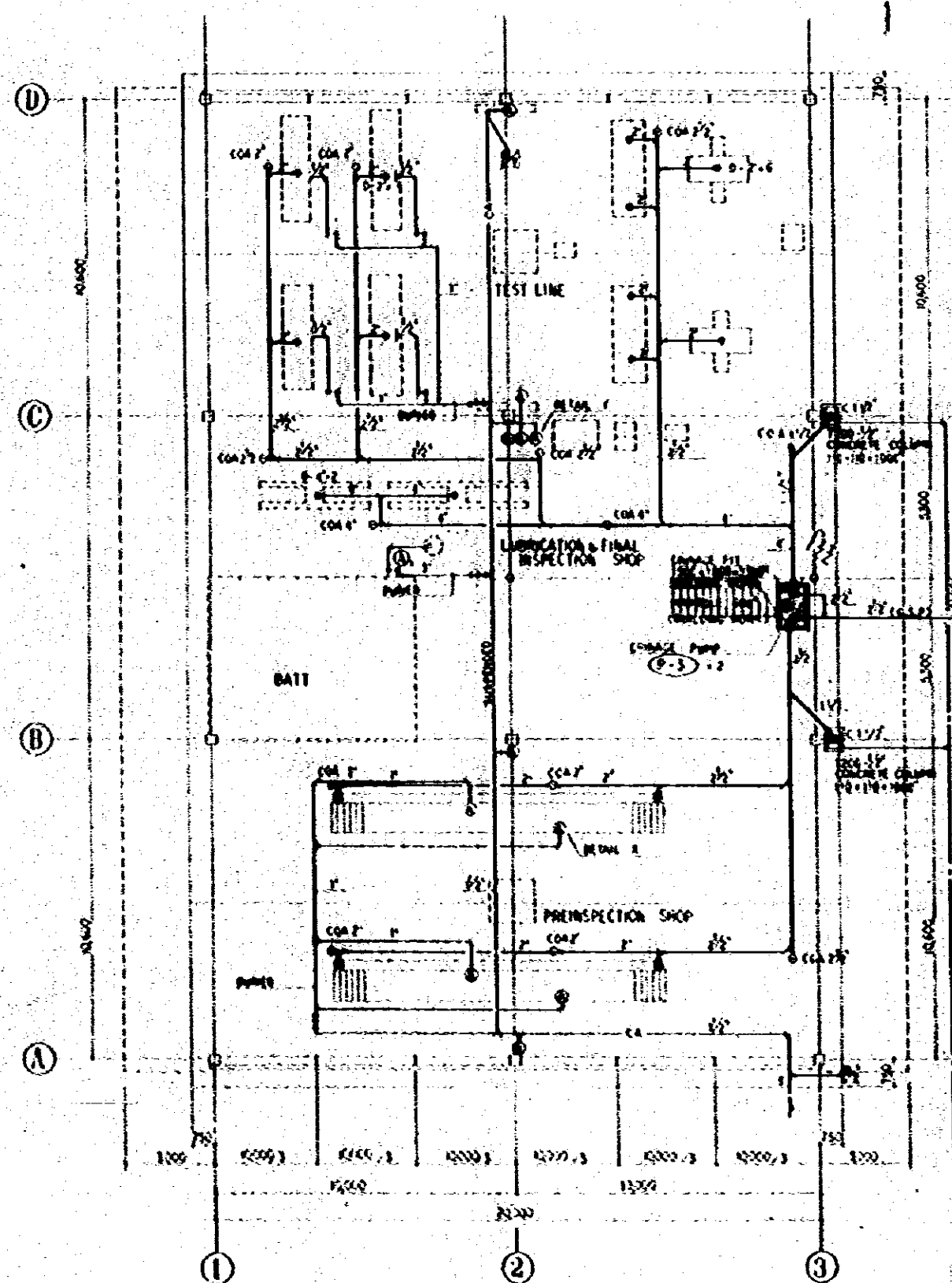


PLAN OF DECK S-1:100

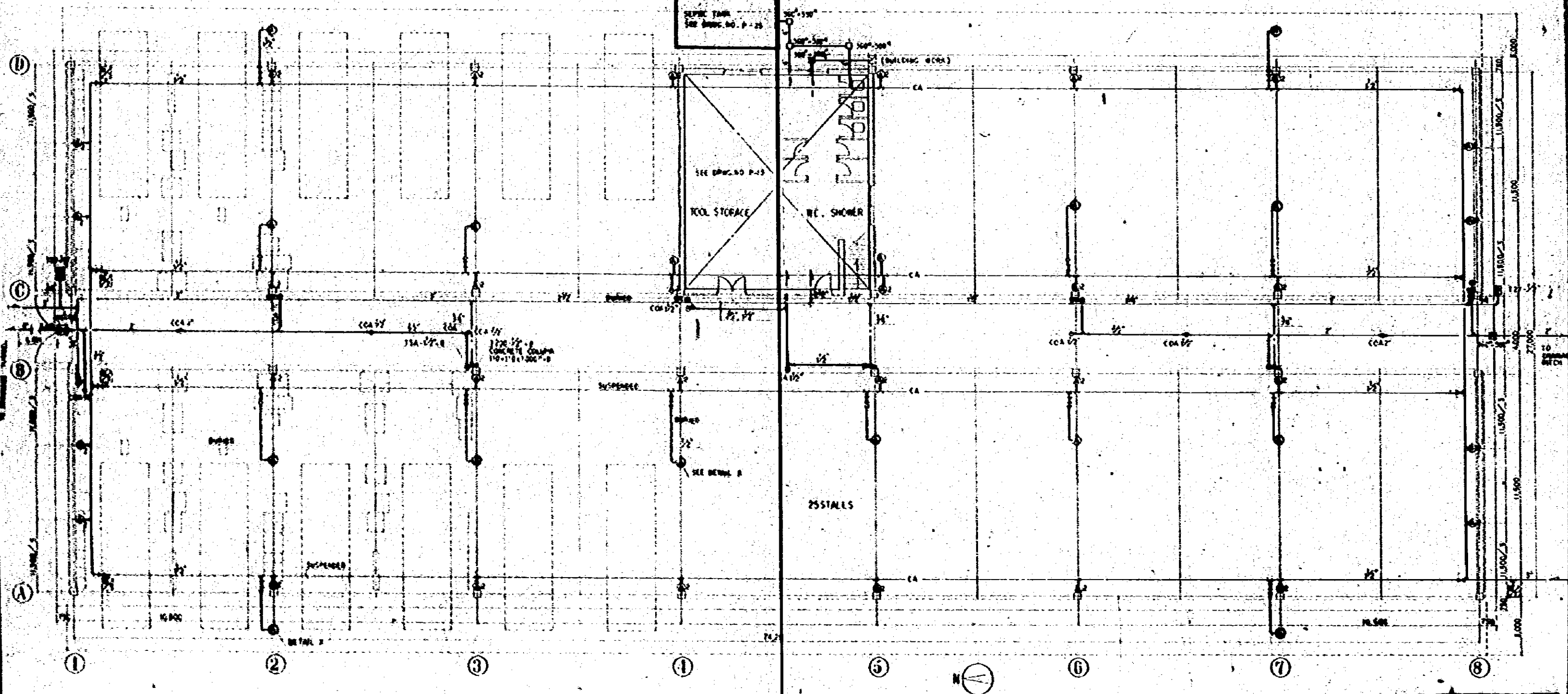
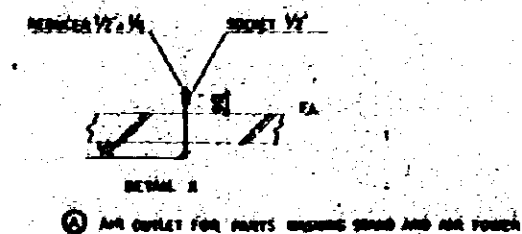


GROUND FLOOR PLAN OF PARTS STORAGE S-1:100

CONSTRUCTION PROJECT		10/79
AUTOMOBILE REPAIR & MAINTENANCE WORKSHOP		1/100
TITLE OF PROJECT		8
GROUND FLOOR PLAN OF PARTS STORAGE		10
JAPAN INTERNATIONAL COOPERATION AGENCY		

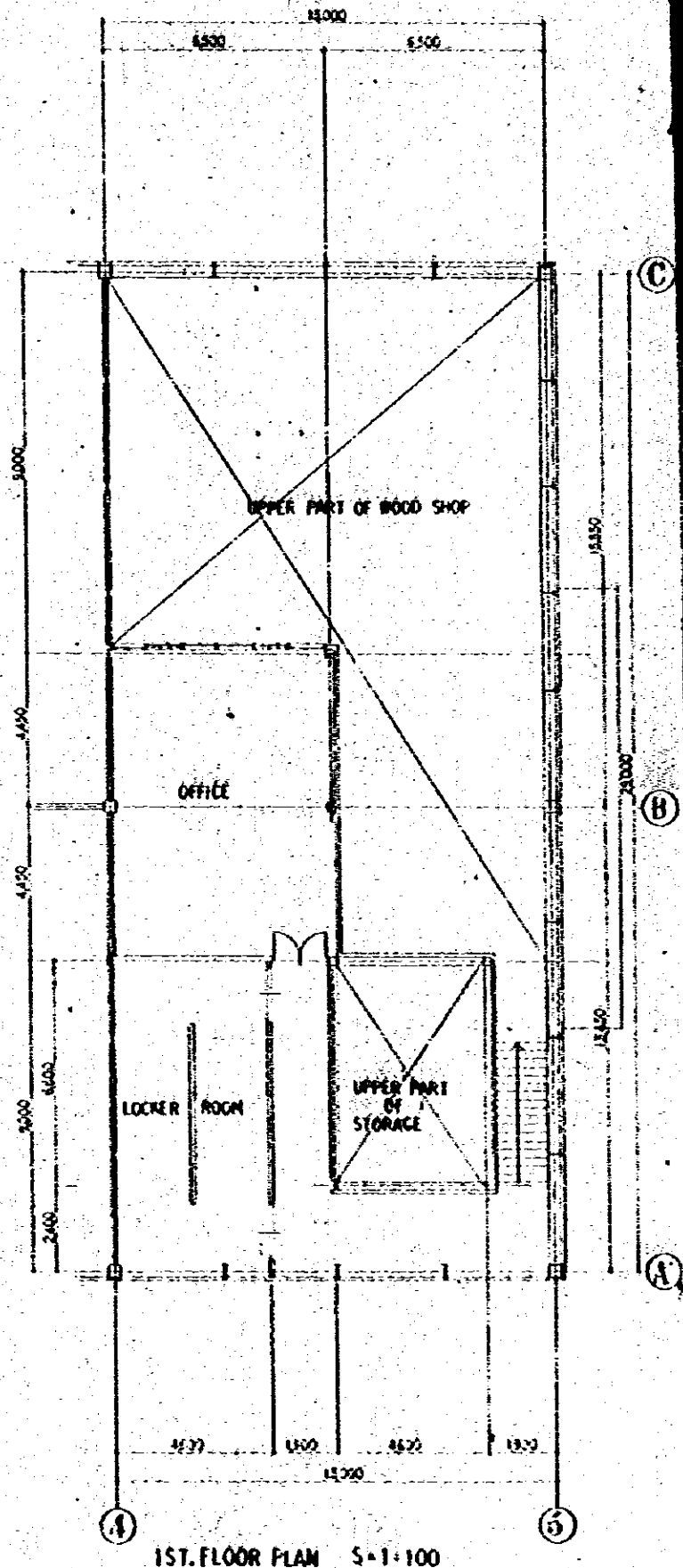
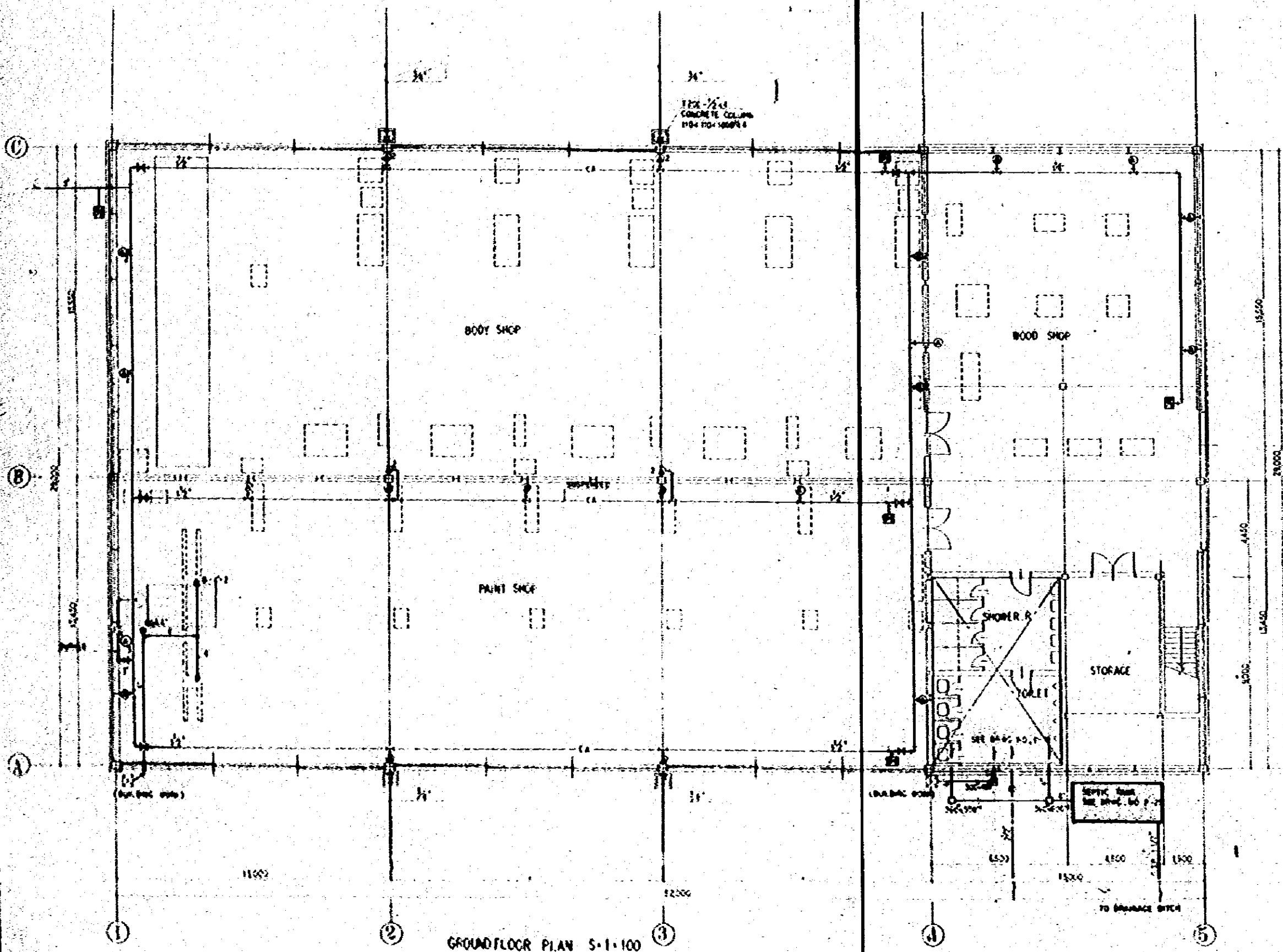


CONSTRUCTION PROJECT	10/79
AUTOMOBILE REPAIR/MAINTENANCE WORKSHOP	1:100
PLANNING	P. 11
GROUND FLOOR & 1ST FLOOR PLAN OF INSPECTION FACTORY	
JICA INTERNATIONAL COOPERATION AGENCY	



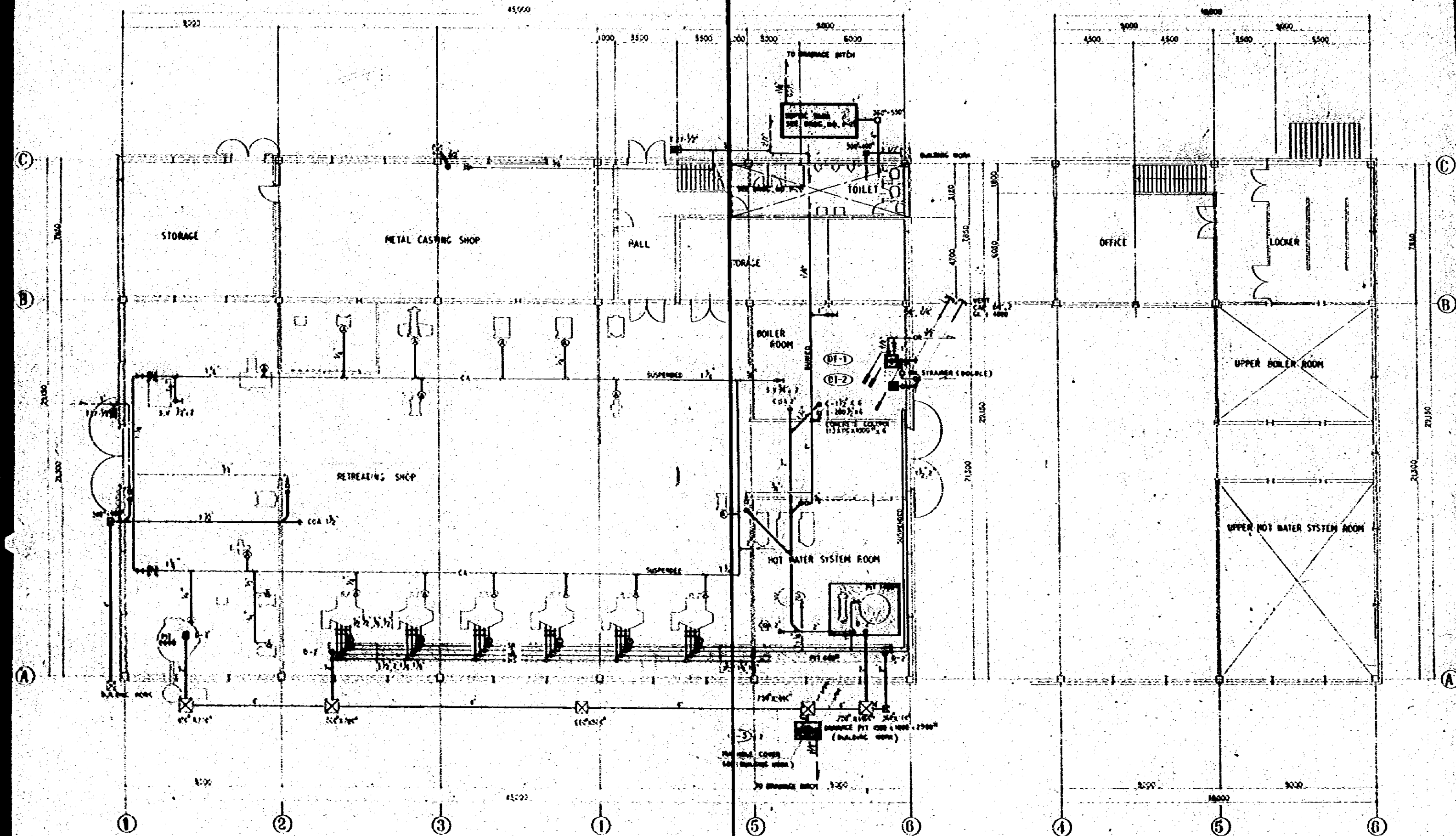
GROUND FLOOR PLAN OF PERIODICAL REPAIR FACTORY S-1-100

CONSTRUCTION PROJECT OF	DATE 1947
AUTOMOBILE REPAIR MAINTENANCE WORKSHOP IN CHINA	FILE 1-100
NAME OF CONTRACTOR PLUMBER	NO. P 12
GROUND FLOOR & 1ST FLOOR PLAN OF PERIODICAL REPAIR FACTORY	
JAPANESE NATIONAL ORGANIZATION AND OFFICE	



PAIN AND BODY FACTORY

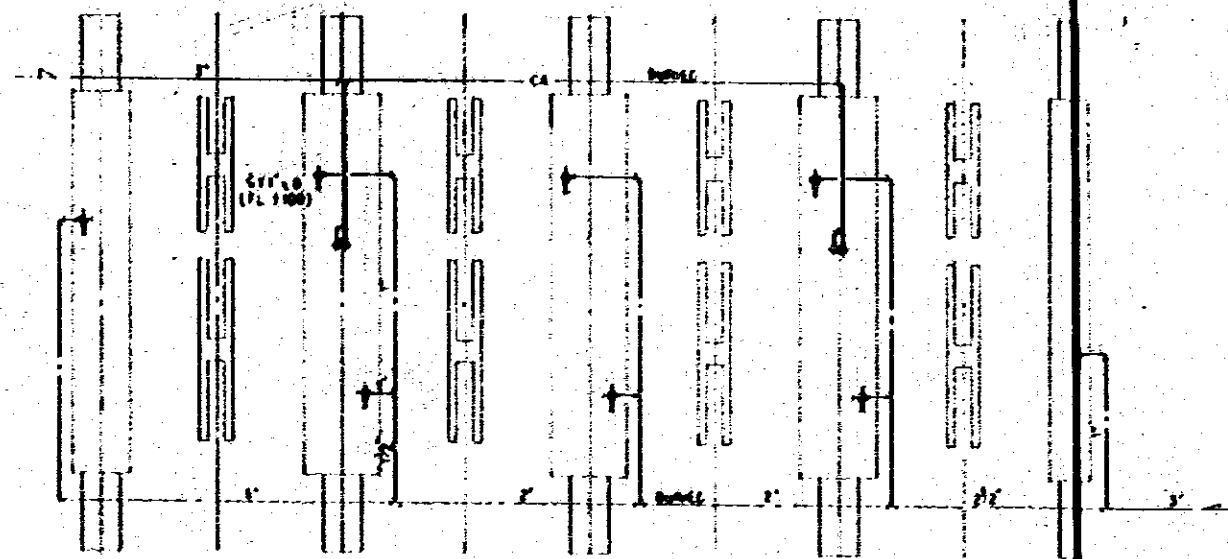
CONSTRUCTION PROJECT OF		13/10
AUTOMOBILE REPAIR, MAINTENANCE WORKSHOP IN EVOLUTION		1-100
FLOOR PLAN OF FLOORING		1-15
GROUND FLOOR & 1ST FLOOR PLAN OF PAINT AND BODY FACTORY		1-15
1955 INTERNATIONAL CONVENTION		



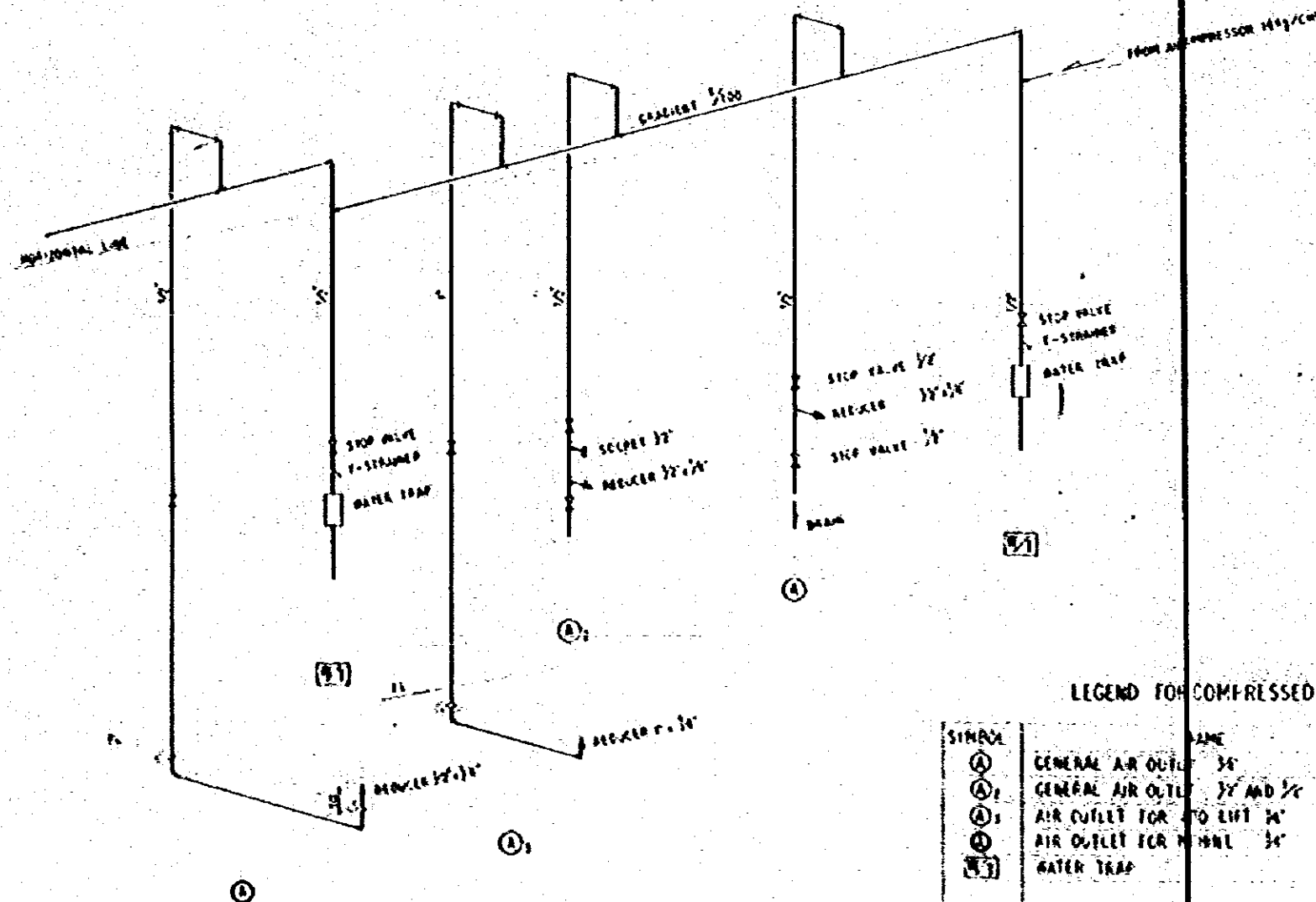
GROUND FLOOR PLAN S-1-100
RETREADING AND METAL CASTING FACTORY

1ST FLOOR PLAN S-1-100

CONSTRUCTION SOURCE OF	10/79
AUTOMOBILE REPAIR MAINTENANCE WORKSHOP S. 1-100	1-100
PLANNING GROUND FLOOR & 1ST FLOOR PLAN OF RETREADING AND METAL CASTING FACTORY	2. 14
NEW INTERNATIONAL COOPERATION AGENCY	



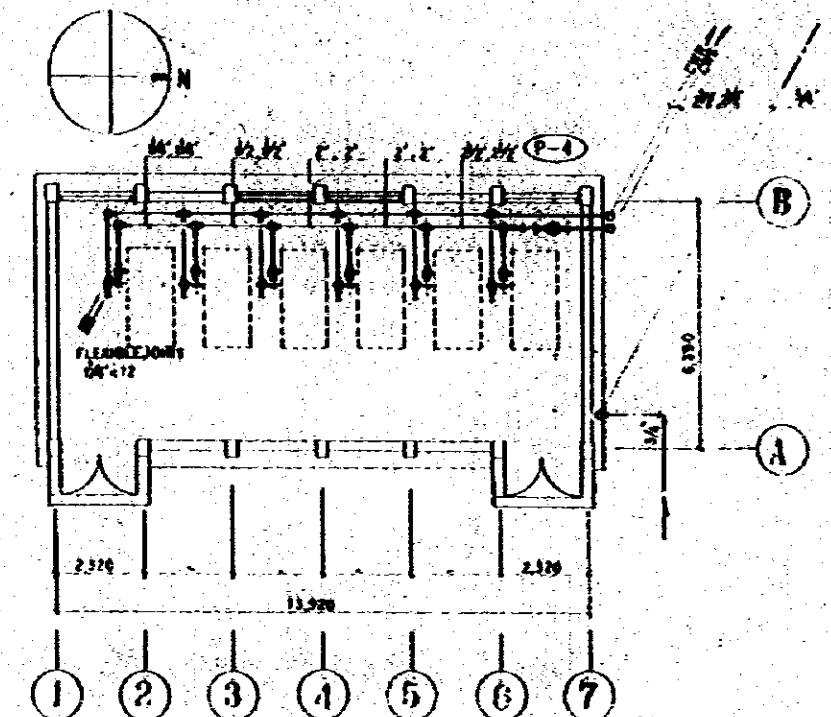
PLAN OF CAR WASHING S=1:100



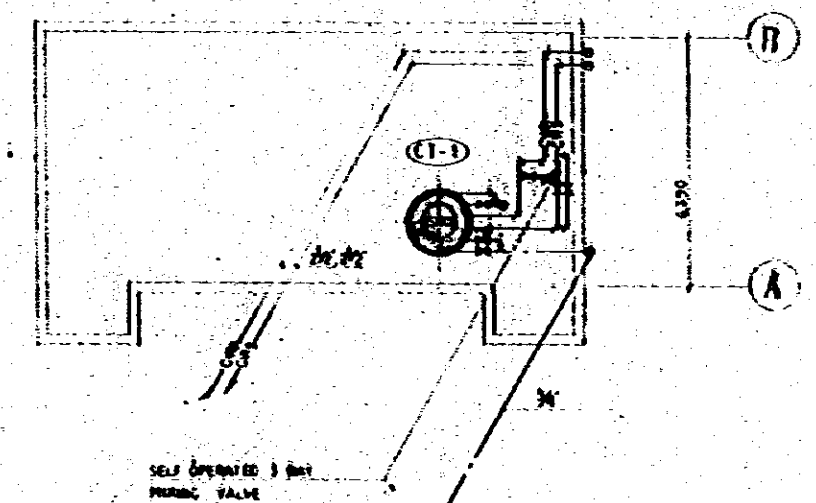
DETAIL OF COMPRESSED AIR PIPING NOT TO SCALE

LEGEND FOR COMPRESSED AIR PIPING

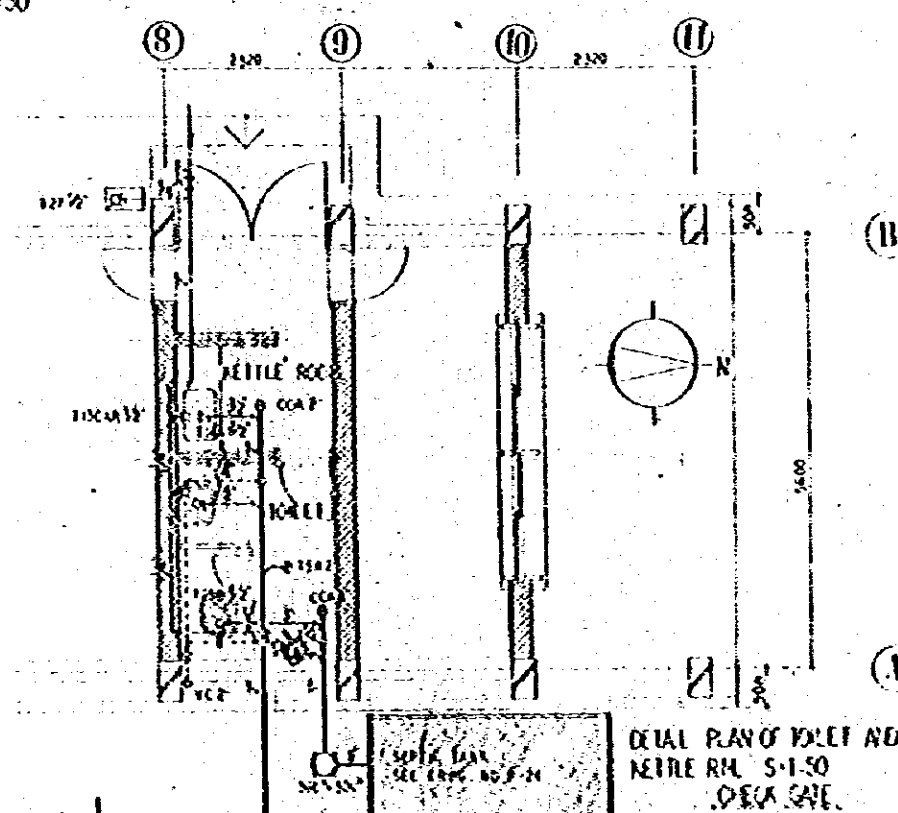
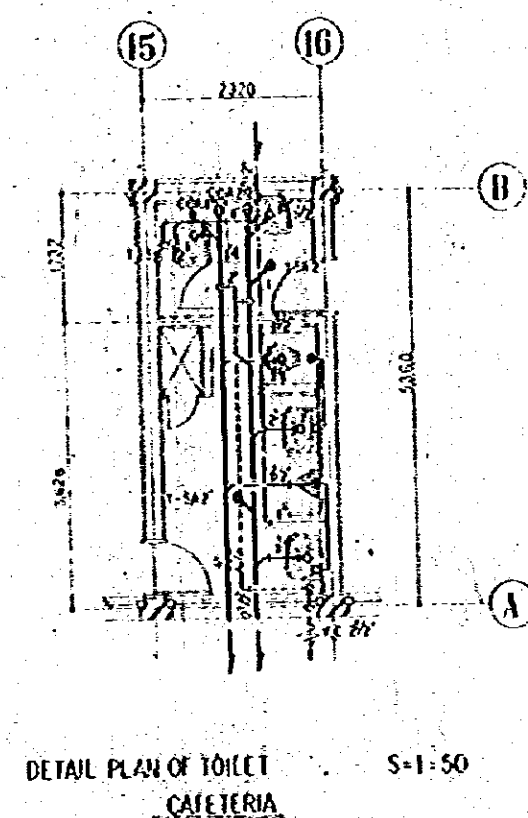
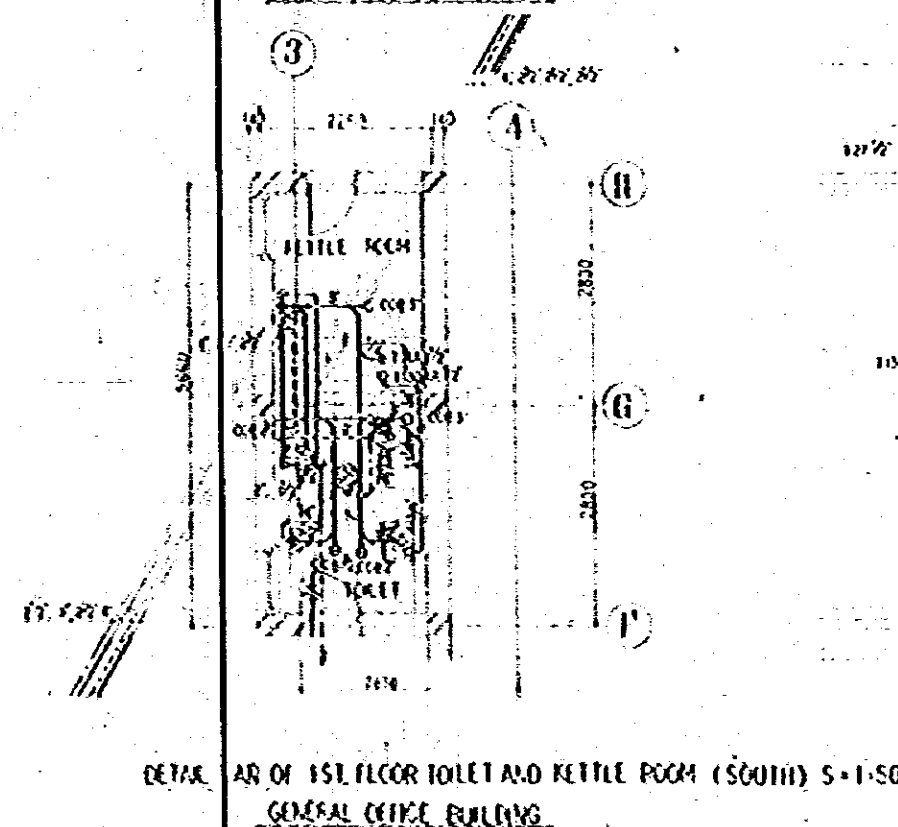
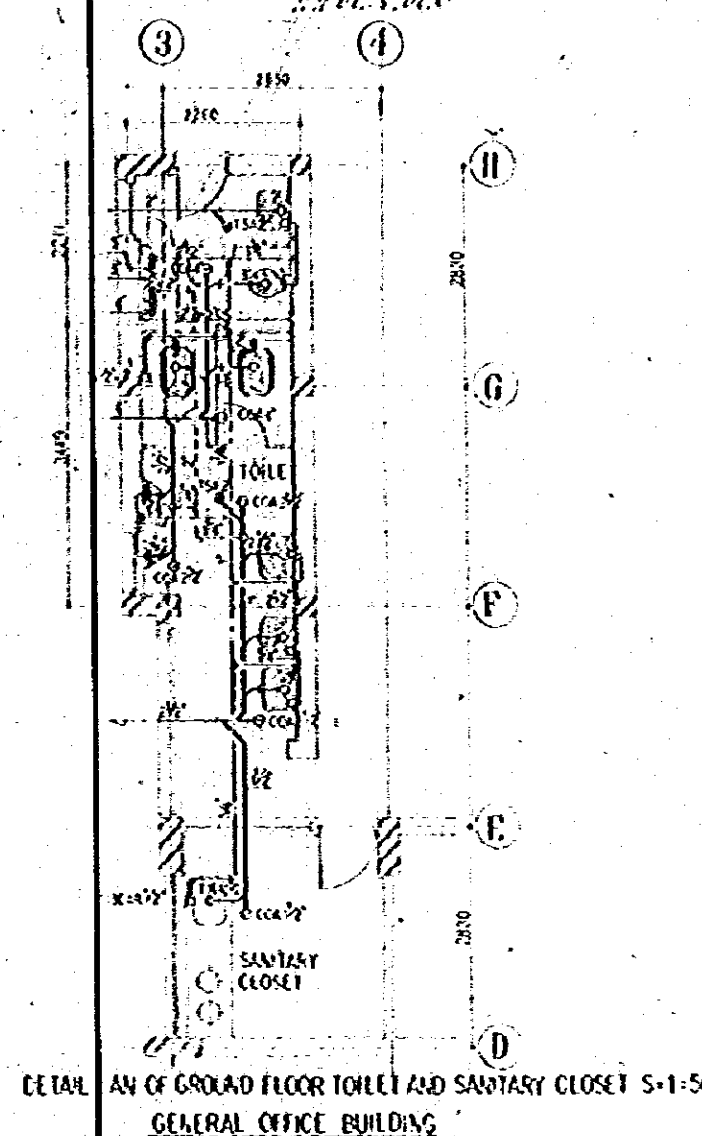
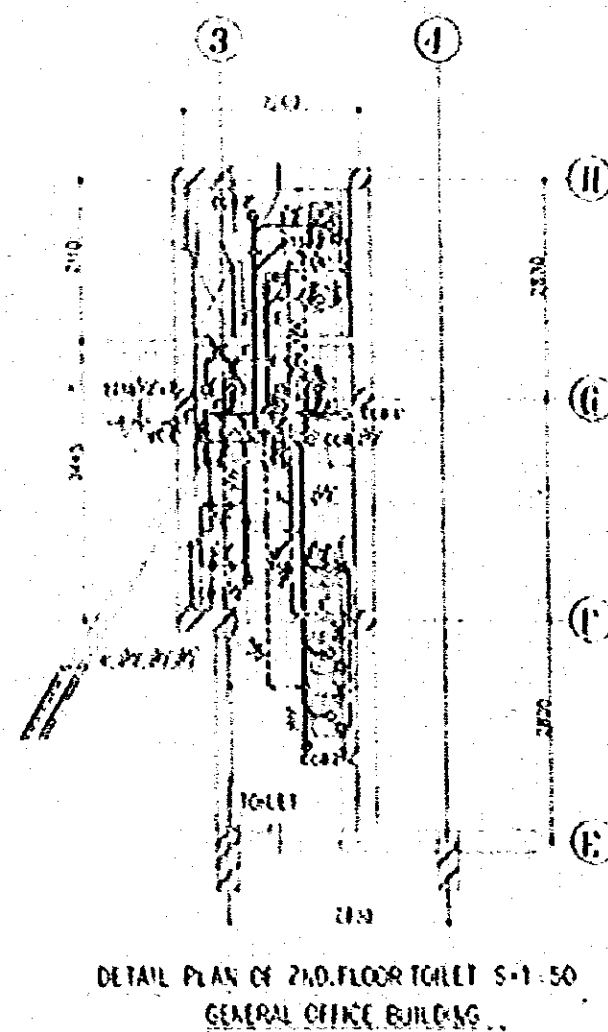
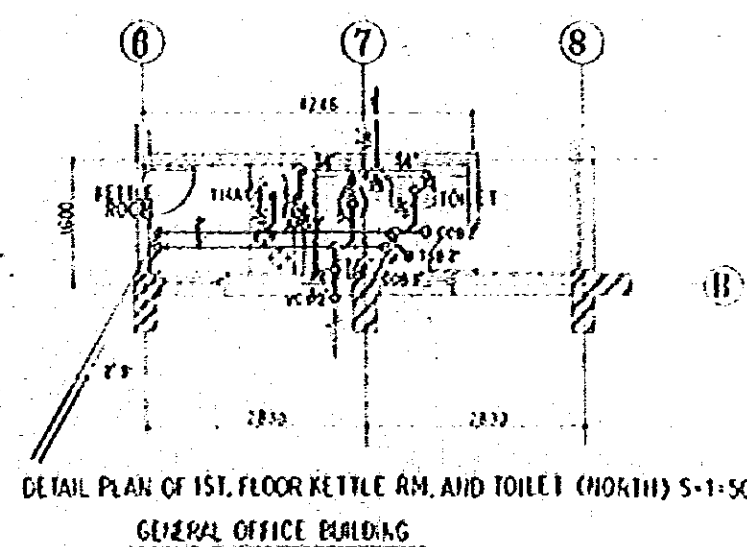
SYMBOL	NAME	HEIGHT (FEET)
(A)	GENERAL AIR OUTLET 3/4"	1000
(A1)	GENERAL AIR OUTLET 1/2" AND 3/8"	1000
(A2)	AIR OUTLET FOR LIFT 3/4"	UNDER GROUND
(A3)	AIR OUTLET FOR WHEEL 3/4"	50
(W1)	WATER TRAP	600



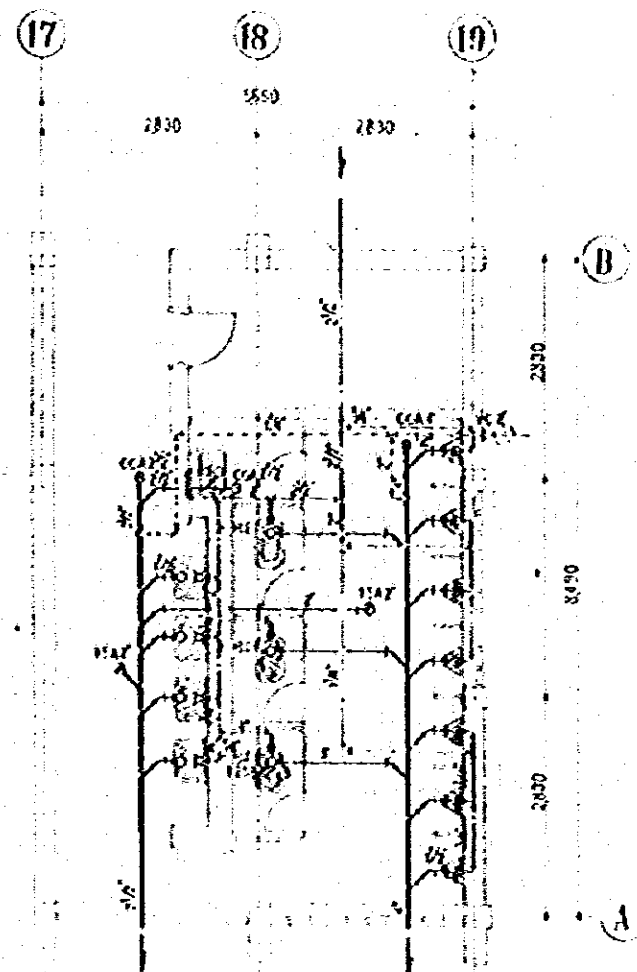
GROUND FLOOR PLAN S=1:100



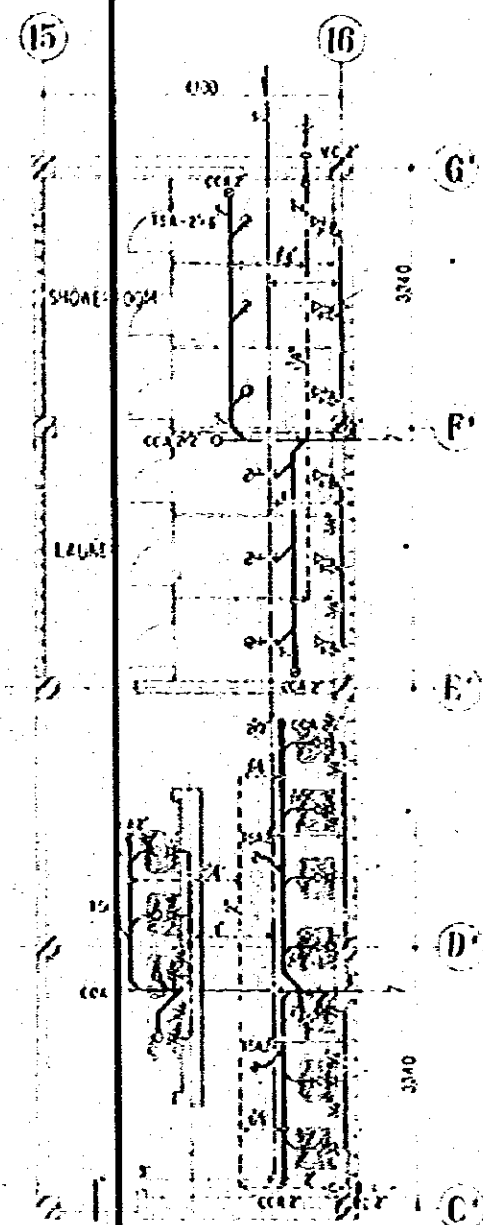
ROOF PLAN S=1:100
AIR COMPRESSOR HOUSE



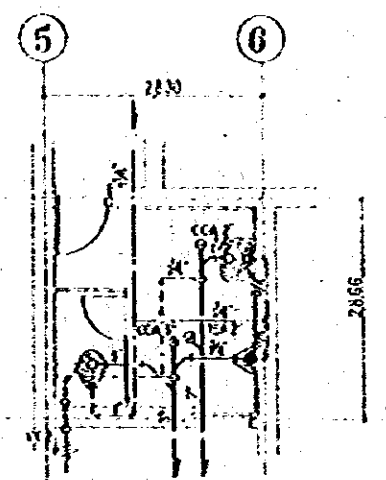
AUTOMOBILE REPAIR, MAINTENANCE WORKSHOP	10/29
DETAIL PLAN OF TOILET, KETTLE ROOM, SANITARY CLOSET, CAFETERIA AND OTHERS	10/29
JAPAN ENGINEERING CORPORATION	10/29



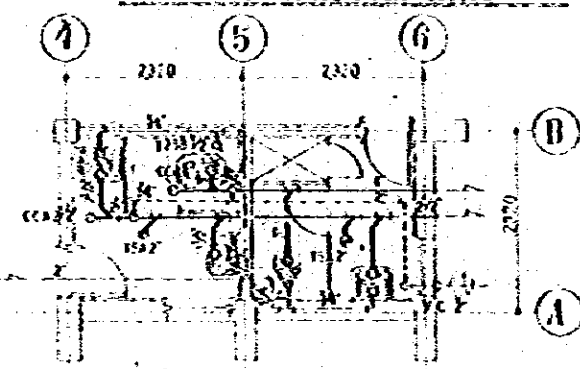
DETAIL PLAN OF NORTH TOILET S-1-50
CLASSROOM AND OFFICE



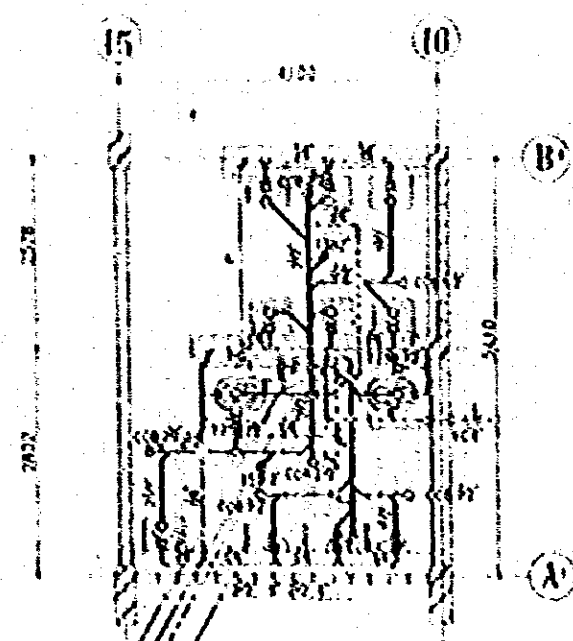
DETAIL PLAN OF SHOWER ROOM AND LAUNDRY S-1-50
DORMITORY



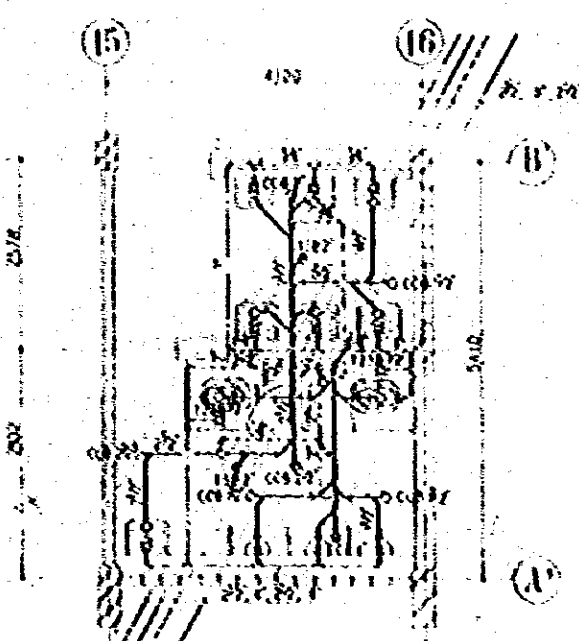
DETAIL PLAN OF SOUTH TOILET S-1-50
CLASSROOM AND OFFICE



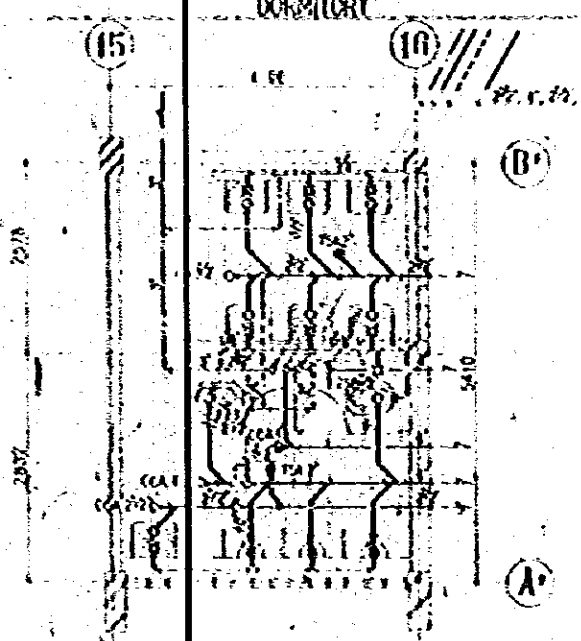
DETAIL PLAN OF EAST TOILET S-1-50
DORMITORY



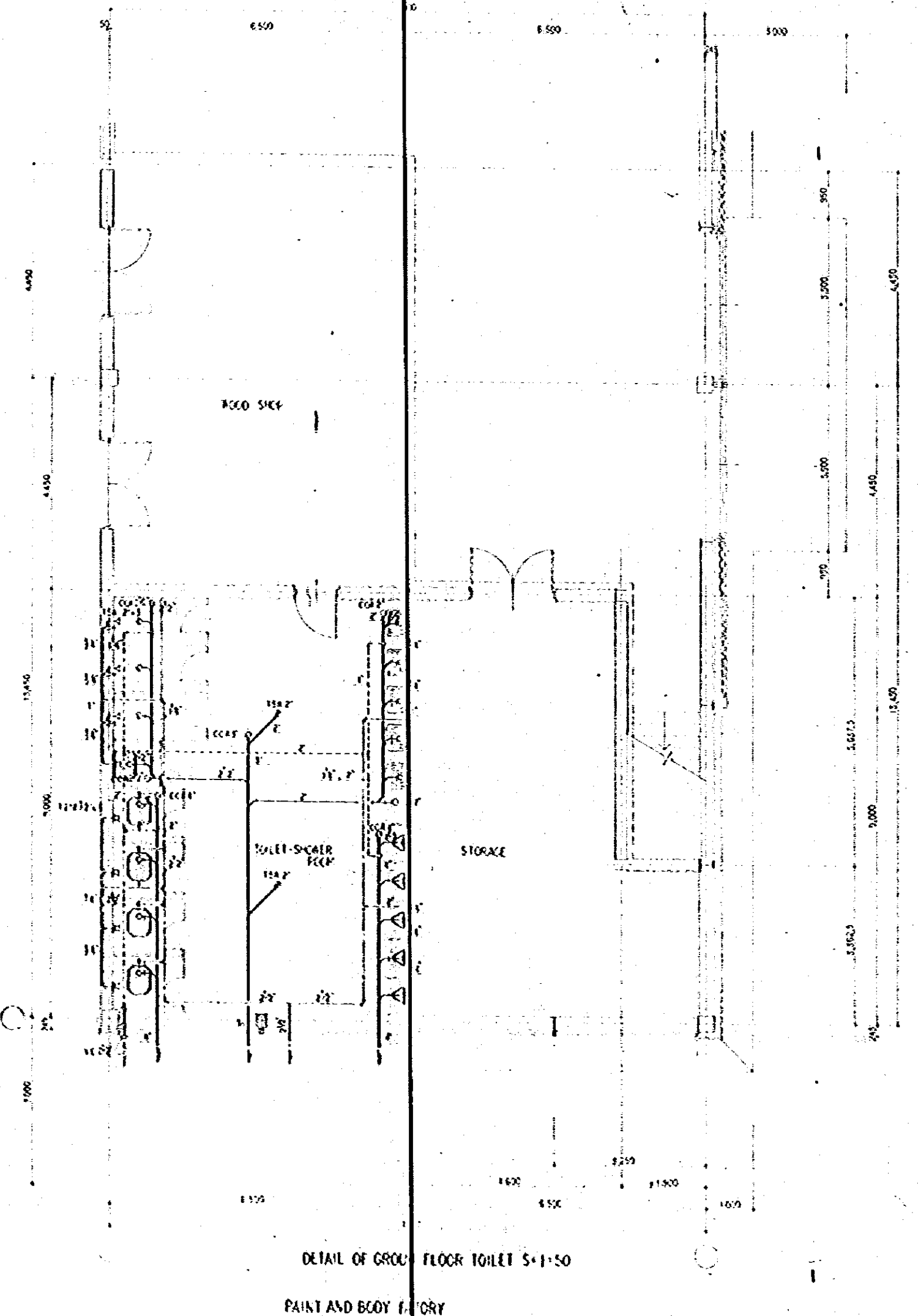
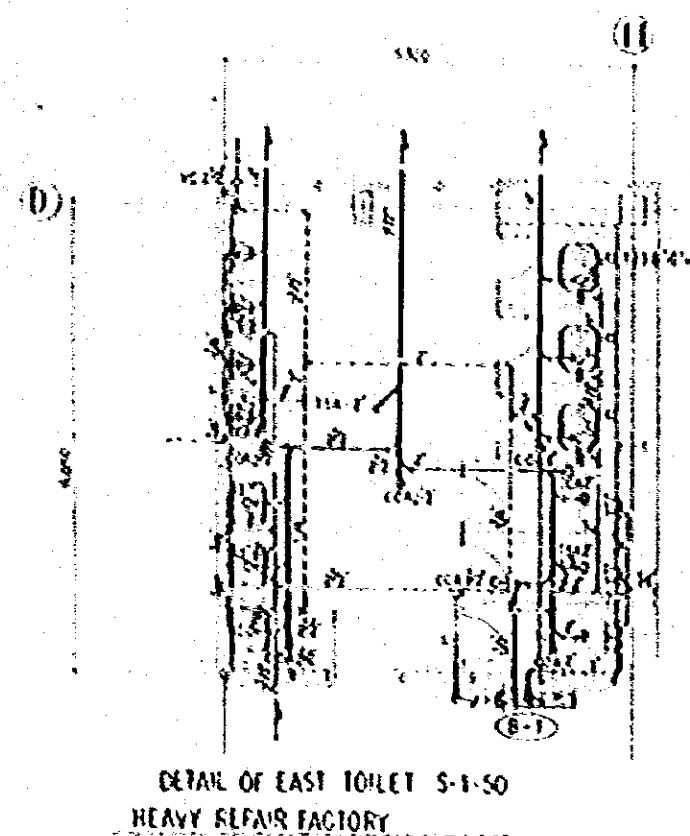
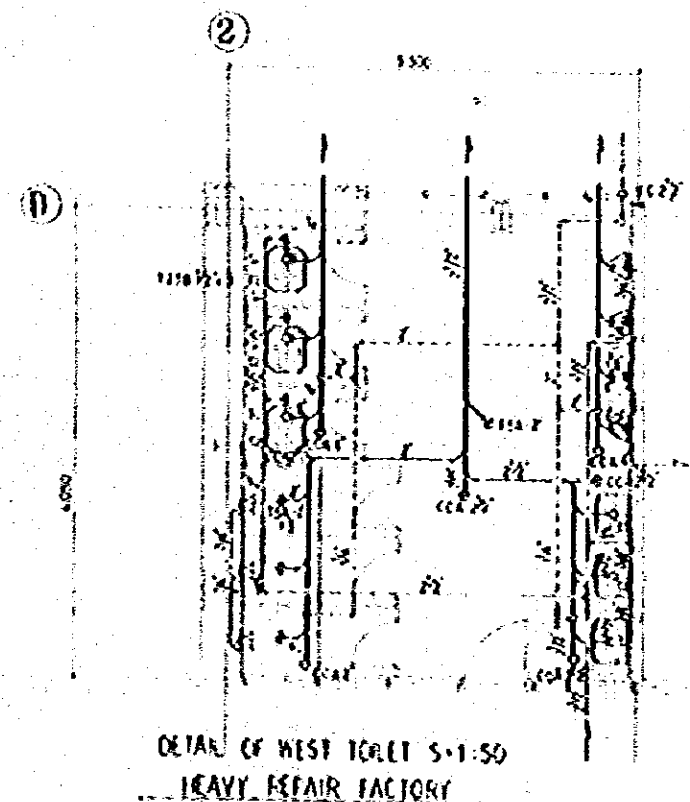
DETAIL PLAN OF 2ND FLOOR TOILET S-1-50
DORMITORY

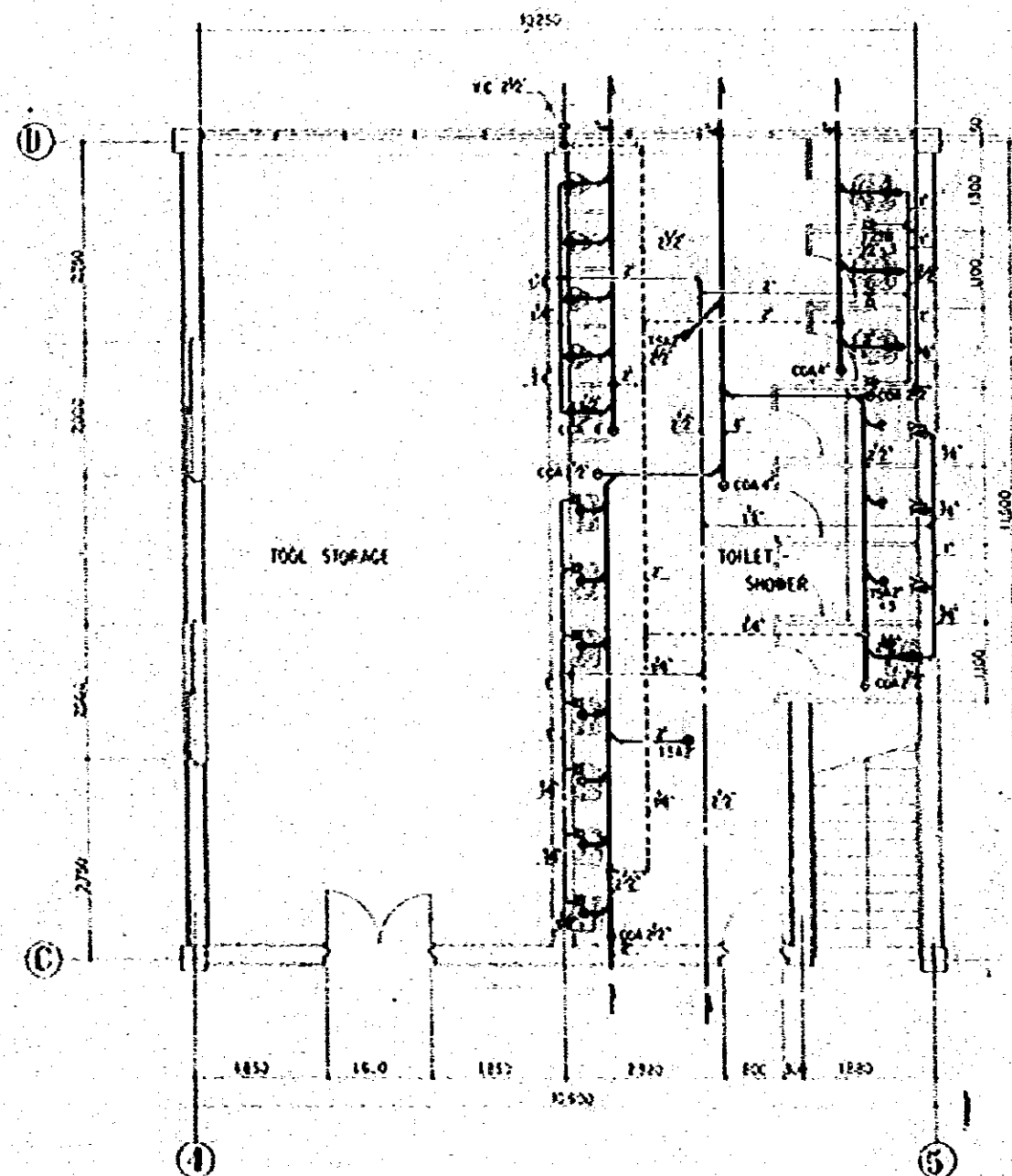


DETAIL PLAN OF 1ST FLOOR TOILET S-1-50
DORMITORY



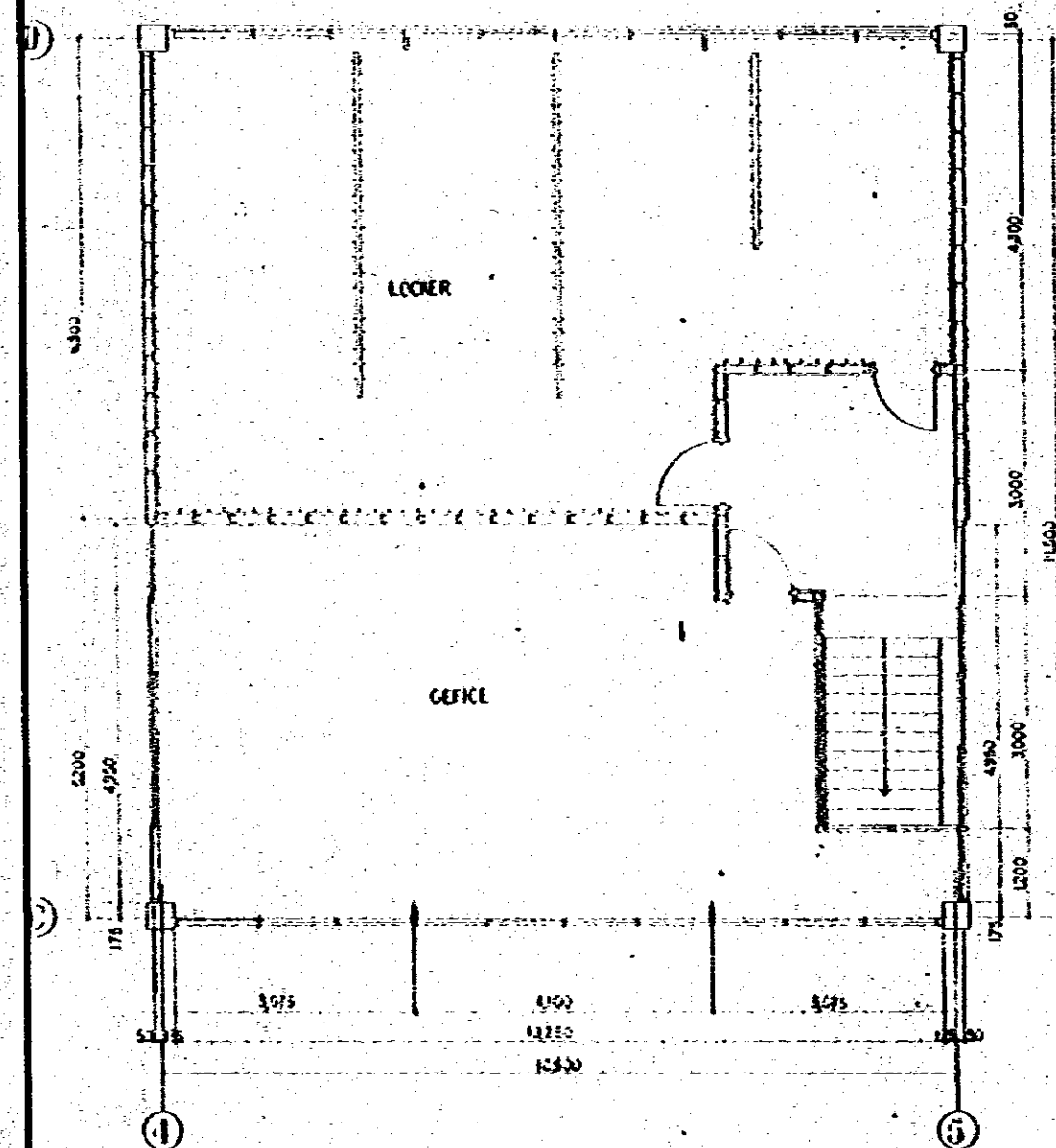
DETAIL PLAN OF GROUND FLOOR TOILET S-1-50
DORMITORY



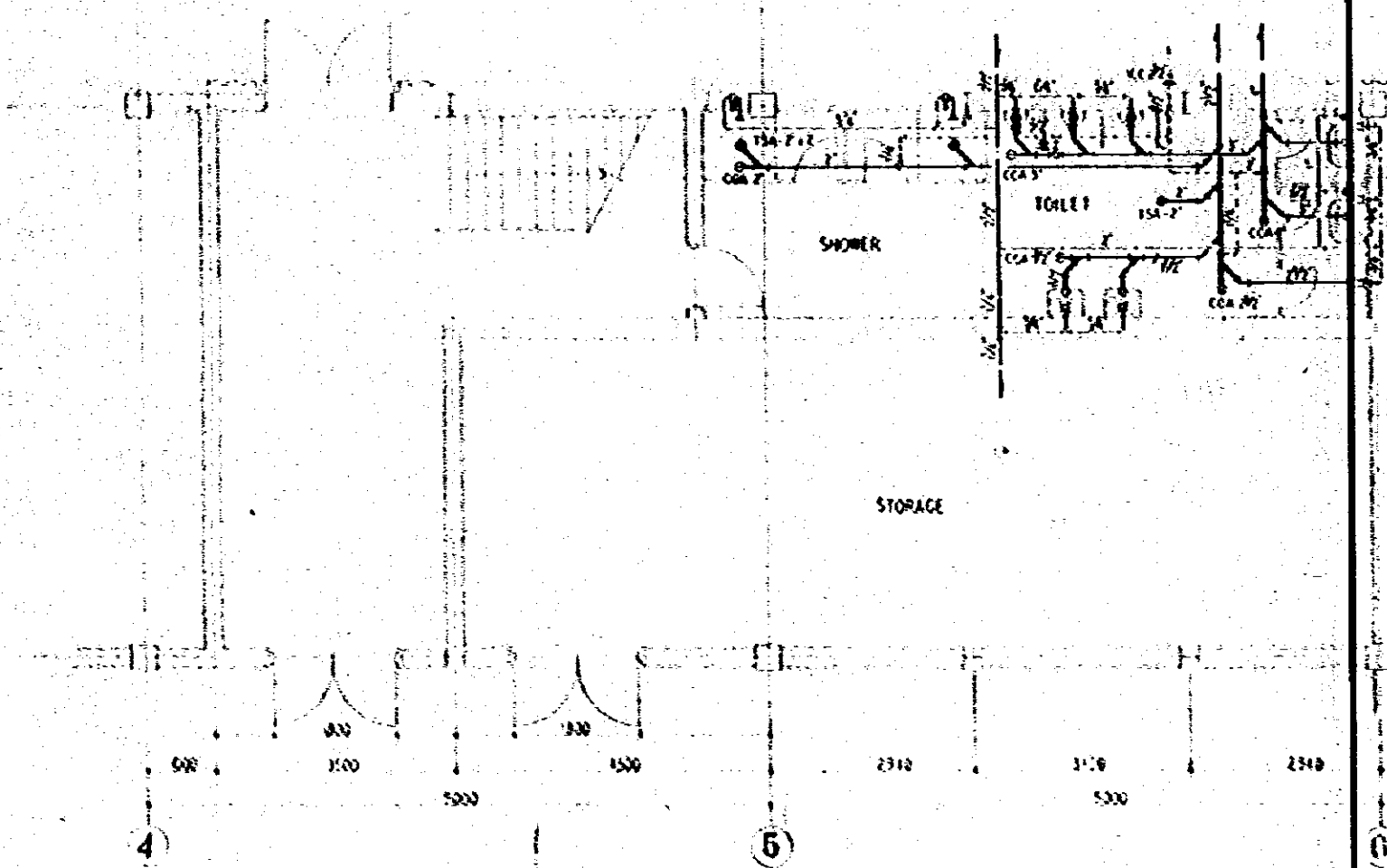


DETAIL OF GROUND FLOOR TOILET S=1:50

PERIODICAL REPAIR FACTORY

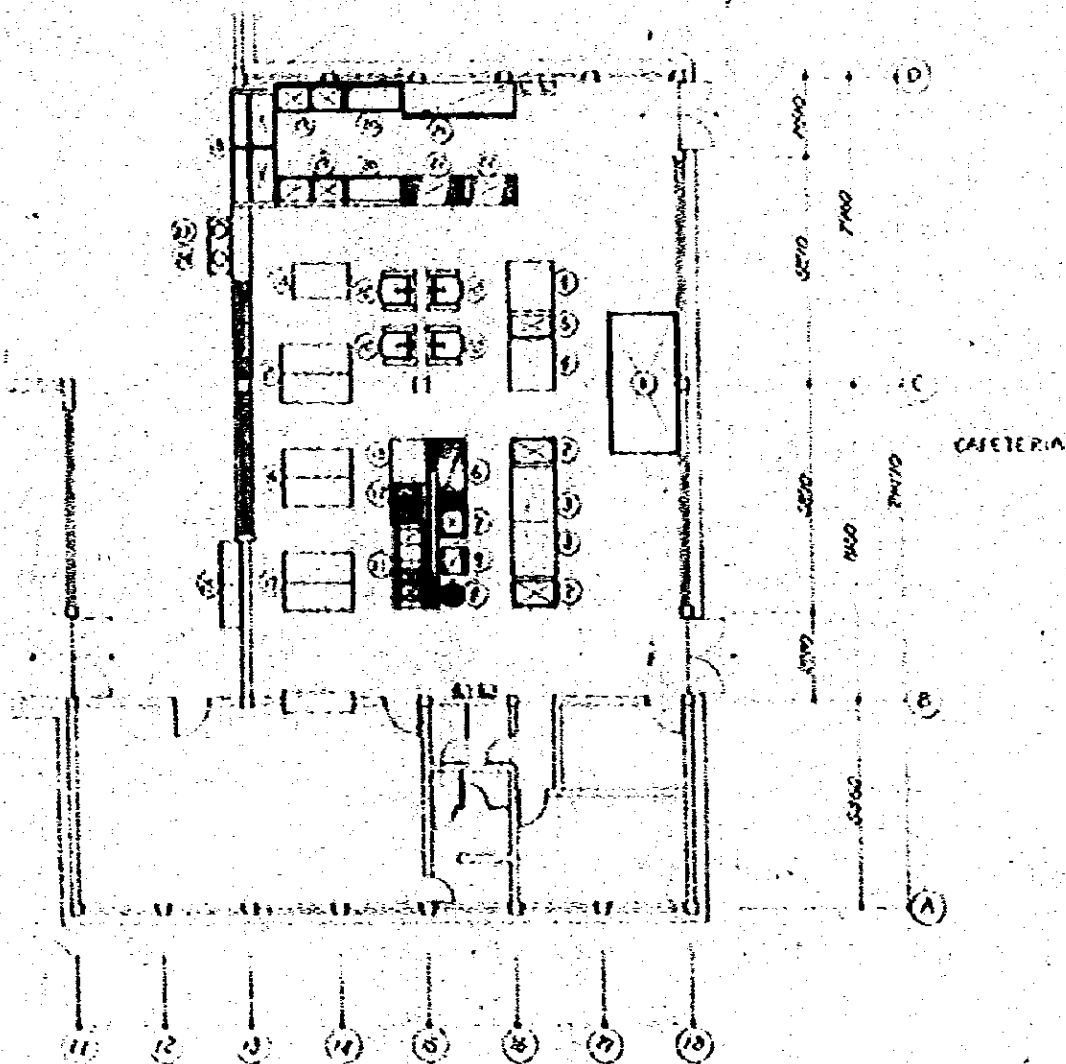
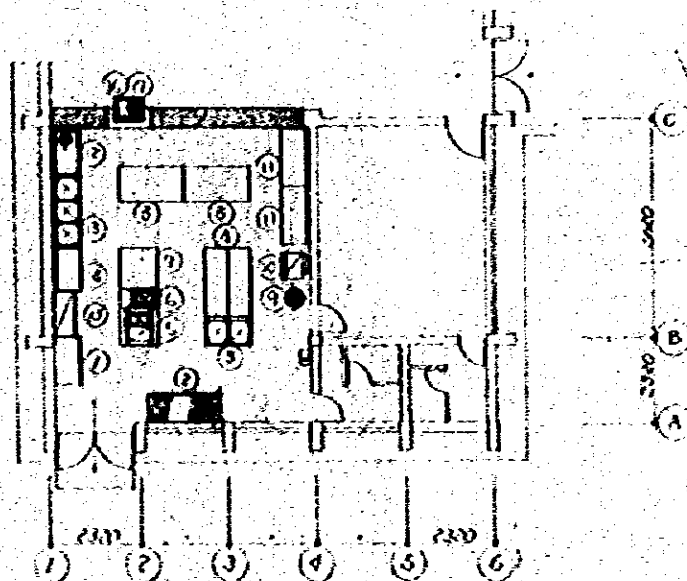


CONSTRUCTION PROJECT		10/73
AUTOMOBILE REPAIR, MAINTENANCE WORKSHOP		1:50
PLUMBING		1:50
DETAIL PLAN OF TOILET (PERIODICAL REPAIR FACTORY)		1:50
JOINT INTERNATIONAL COOPERATION AGENCY		



DETAIL OF TOILET S. 1:50
RETREADING AND METAL CASTING FACTORY

CONSTRUCTION PROJECT		10/73
AUTOMOBILE REPAIR MAINTENANCE WORKSHOP		1:50
PLUMBING		P. 20
DETAIL: PLAN OF TOILET (RETREADING & M.C.F.)		
JOAN R. HARRIS, ARCHITECT		



NO	DESCRIPTION	DIMENSION			REMARKS
		WIDTH	DEPTH	HEIGHT	
DORMITORY KITCHEN					
1	REACH-IN REFRIGERATOR	1200	200	1500	13290V 0.4kw
2	PAN	1200	750	1800	1
3	2 COMPT SINK	1200	750	850	1
4	TABLE	1200	600	350	2
5	ELECTRIC RANGE	1200	600	350	30413V 150W
6	ELECTRIC FRYER TABLE	500	1000	850	30413V 220W MODEL F-301
7	TABLE	1250	1000	350	1
8	TABLE	1200	750	850	2
9	DISH WASHER	430		800	1
10	ELECTRIC RICE COOKER	600	300	1250	220V 301W
11	TABLE	1500	750	250	2
12	SOLED DASH WARE	1200	750	850	1
13	3 COMPT SINK	1200	750	850	1
14	CLEANING TABLE	1200	750	850	1
15	DISH STERILIZER CABINET	1200	750	1200	220V 321W
16	WASH TABLE	750	750	850	1
17	WATER SINK	MODEL F-301			30413V 150W
CATERING KITCHEN					
1	REACH-IN REFRIGERATOR (FREEZER)	3600	1650	2250	220V 0.15kw 220V 150W YANDEX 1001
2	SINK	1200	750	850	2
3	TABLE	1200	1200	850	2
4	TABLE	1200	1200	850	2
5	SINK	1200	750	850	1
6	RYKE	1200	750	1800	1
7	PAN SINK	750	750	850	1
8	RICE WASHER	500		800	1
9	ELECTRIC RICE COOKER	600	300	1250	220V 301W
10	ELECTRIC BROWNING TABLE	1200	600	350	30413V 150W
11	ELECTRIC RANGE	1200	1000	350	30413V 150W
12	ELECTRIC FRYER TABLE	500	1000	850	30413V 220W MODEL F-301
13	TABLE	1200	1000	350	1
14	TABLE	1500	750	850	1
15	TABLE	1200	750	850	2
16	TABLE	1200	750	850	2
17	TABLE	1200	750	850	2
18	SHOWER SINK	3200	1200	850	1
19	2 COMPT SINK	1200	750	850	2
20	CLEANING TABLE	1200	750	850	1
21	DISH STERILIZER CABINET	1200	750	1200	220V 321W
22	PAN SINK	1200	750	850	2
23	WASH TABLE	600	750	850	1
24	WATER SINK	MODEL F-301			30413V 150W
25	WATER SINK	MODEL F-301			30413V 150W

1067

1000

P

FI

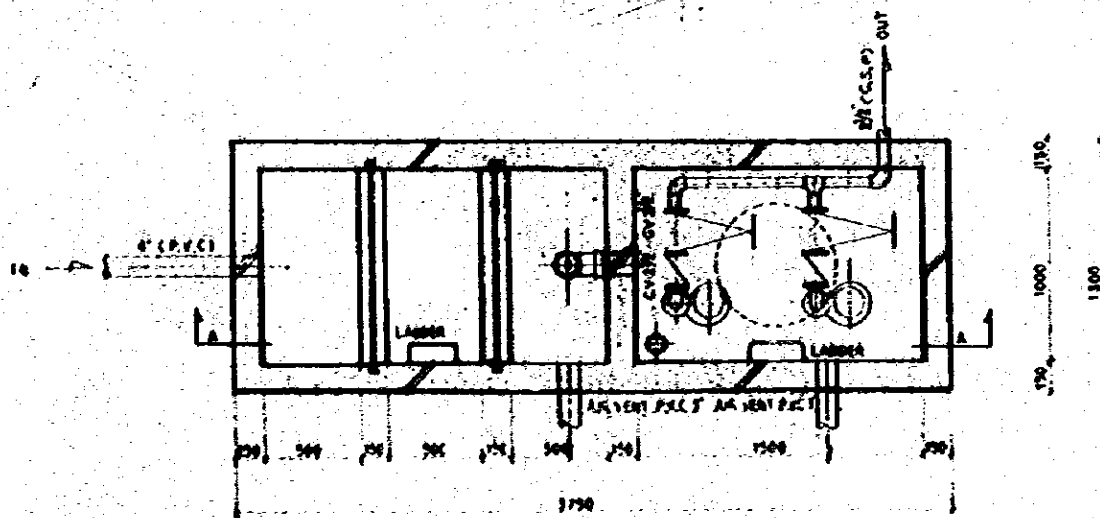
CONSTRUCTION PROJECT

AUTOMOBILE REPAIR & MAINTENANCE WORKSHOP

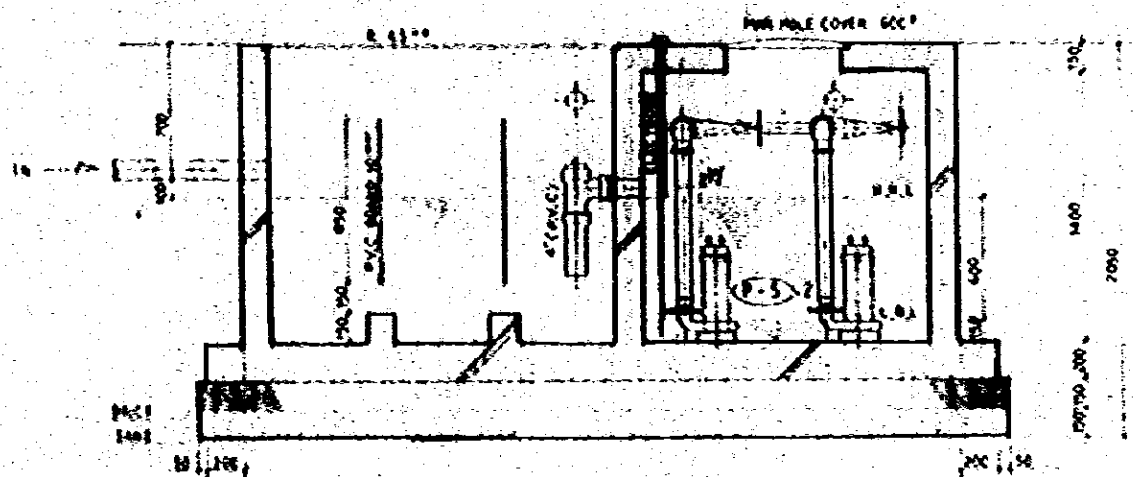
IN BANGALORE

PLUMBING

ELECTRICAL



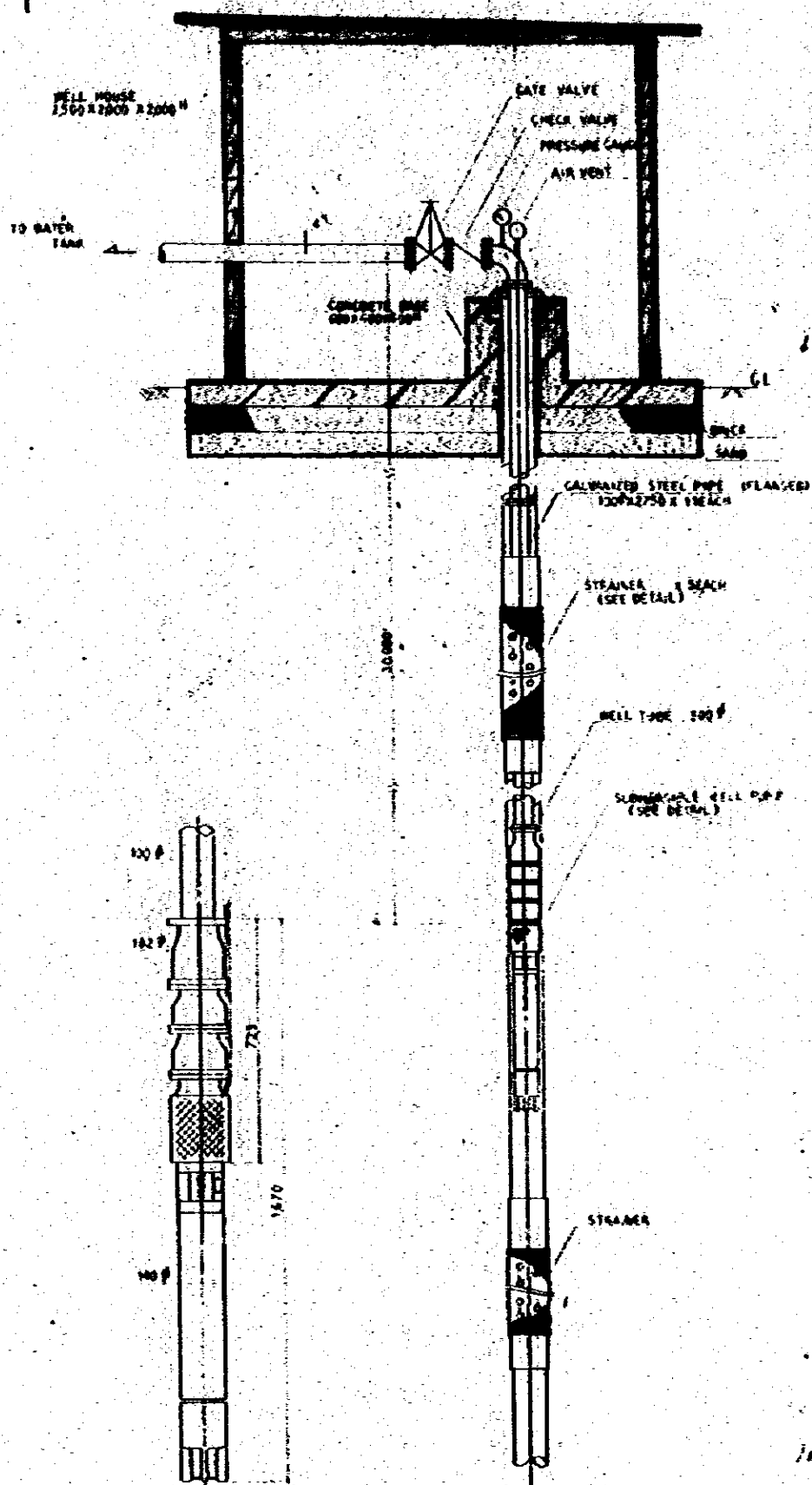
PLAN S=1:20



A-A SECTION S=1:20

NOTE: PUMPS AND PIPING SHALL BE COVERED BY PLUMBING WORK.
ELECTRODE AND WIRING SHALL BE COVERED BY ELECTRIC WORK.
AND THE REST SHALL BE COVERED BY BUILDING WORK.

DETAIL OF OIL TRAP AND DRAINAGE PIT
FOR HEAVY REPAIR FACTORY



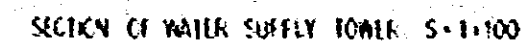
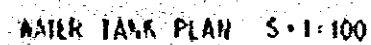
DETAIL OF STRAINER

DETAIL OF SUBMERSIBLE WELL PUMP

SECTION OF WELL

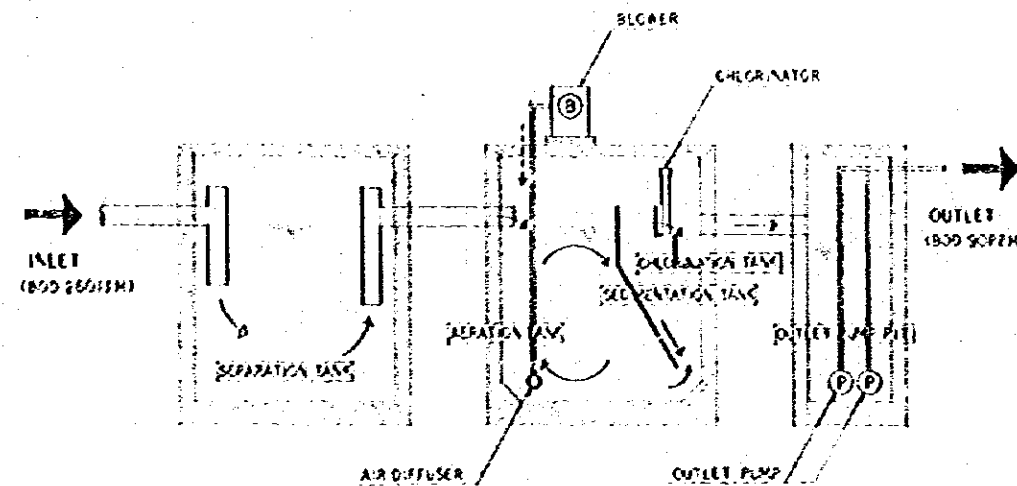
- NOTE: 1 NUMBER & INTERVAL OF STRAINER SHALL BE DETERMINED AFTER FIELD SURVEY.
 2 DEPTH OF WELL IS EXPECTED TO BE APPROX. 100M.
 3 HOUSE & CONCRETE BASE SHALL BE COVERED BY BUILDING WORK.
 4 ELECTRODE, WIRING & CONTROL PANEL SHALL BE COVERED BY ELECTRIC WORK.

CONSTRUCTIVE PROJECT OF AUTOMOBILE REPAIR, MAINTENANCE WORKSHOP BY R.M.V. 10/73		10/73
TITLE OF WORK PUMPING DETAIL OF OIL TRAP AND SUMP PIT DETAIL OF WELL		1-20
JAPAN INTERNATIONAL COOPERATION AGENCY		9/22



CONSTRUCTION PROJECT OF		DATE 13/11
AUTOMOBILE REPAIR & MAINTENANCE WORKSHOP		SCALE (1:10)
IN ENGLADESH		
NAME OF SITES FLYING PUMP HOUSE & WATER SUPPLY TOWER		NO. 10 P 23
JAPAN INTERNATIONAL COOPERATION AGENCY		

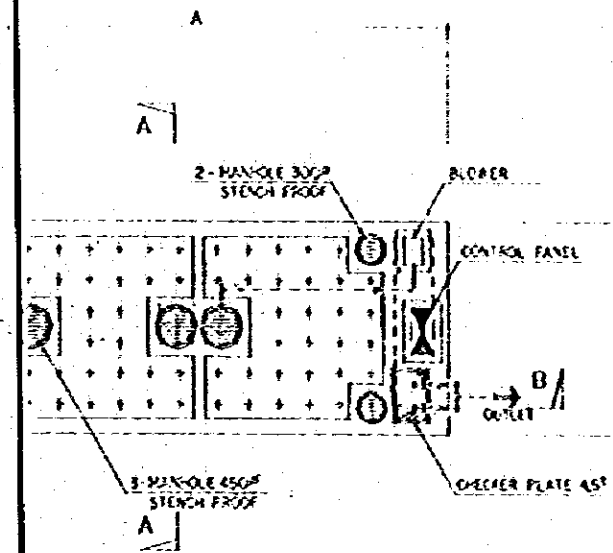
FLOW CHART



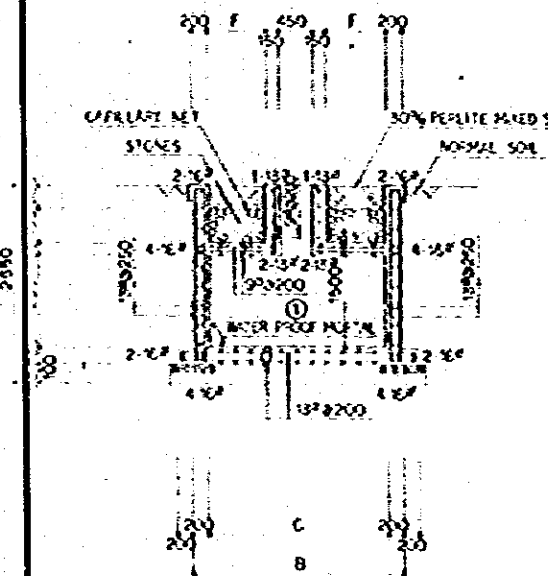
VOLUME LIST

NUMBER OF PERSONS	NUMBER OF TANKS	TOTAL VOLUME (M ³)	SEPARATION TANK (M ³)	AERATION TANK (M ³)	SECONDARY TANK (M ³)	SUMP PIT (M ³)
10	2	1.81	0.9	0.44	0.16	0.25
40	8	5.26	2.7	1.50	0.46	0.5
80	1	10.06	5.1	3.10	0.86	1.0
100	3	12.16	6.3	3.90	1.06	1.1
120	1	14.66	7.5	4.70	1.26	1.2

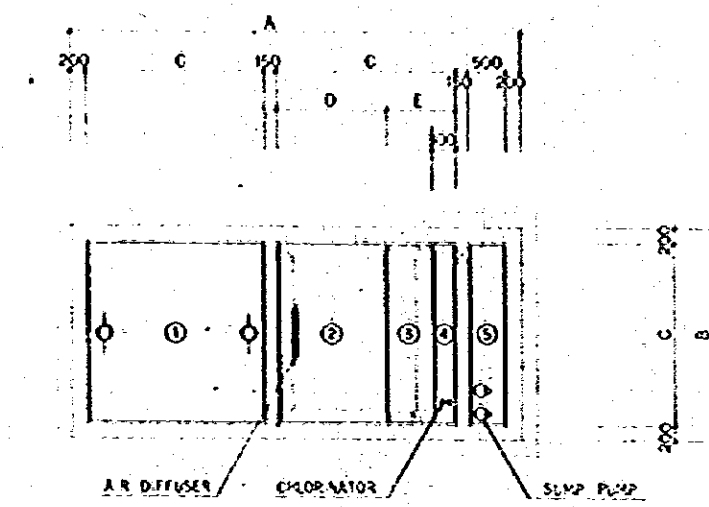
BUILDING NAME	PERSONS	BUILDING NAME	PERSONS
REPAIRING ROOM (EASTING FACTORY)	40	HEAVY REPAIR FACTORY (EAST)	100
PAINT AND BODY FACTORY	40	HEAVY REPAIR FACTORY (EAST)	100
PERSONAL REPAIR FACTORY	120	DOCKHOUSE	100
CATERING	10	CHECK GATE	10
GENERAL OFFICE BUILDING	80	CLASS ROOM AND OFFICE	40



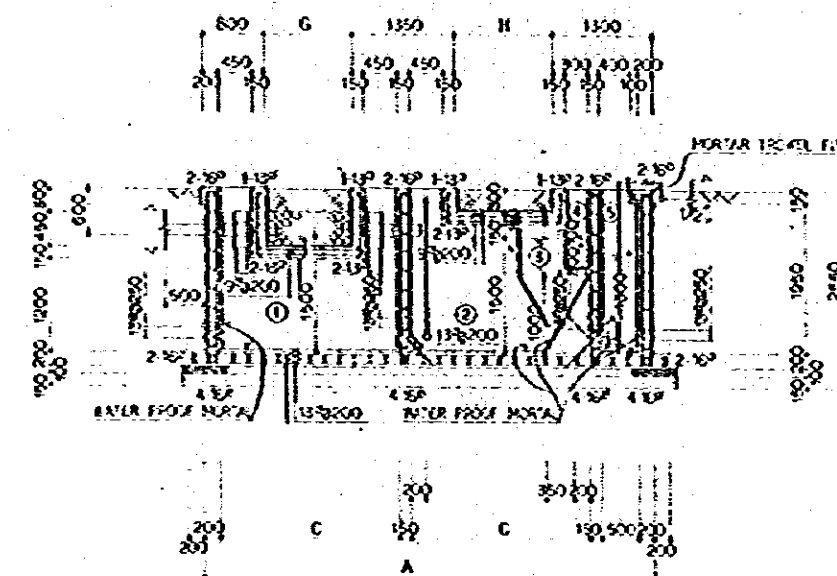
FLOOR PLAN
(S-1/50)



A-A SECTION
(S-1/50)



B1 FLOOR PLAN
(S-1/50)



B-B SECTION
(S-1/50)

	A	B	C	D	E	F	G	H	INTERFIRE	BLOWER	SUMP PUMP	①	SEPARATION TANK
80 PERSONS	5100	2150	1950	1150	800	650	750	900	5"	3.5-0.11%	1.5-0.11%	②	AERATION TANK
100 PERSONS	5500	2550	2150	1350	850	700	950	1100	6"	3.5-0.11%	1.5-0.11%	③	SECONDARY TANK
120 PERSONS	5900	2750	2350	1450	900	800	1150	1300	6"	3.5-0.11%	1.5-0.11%	④	DOCKHOUSE
												⑤	SUMP PIT

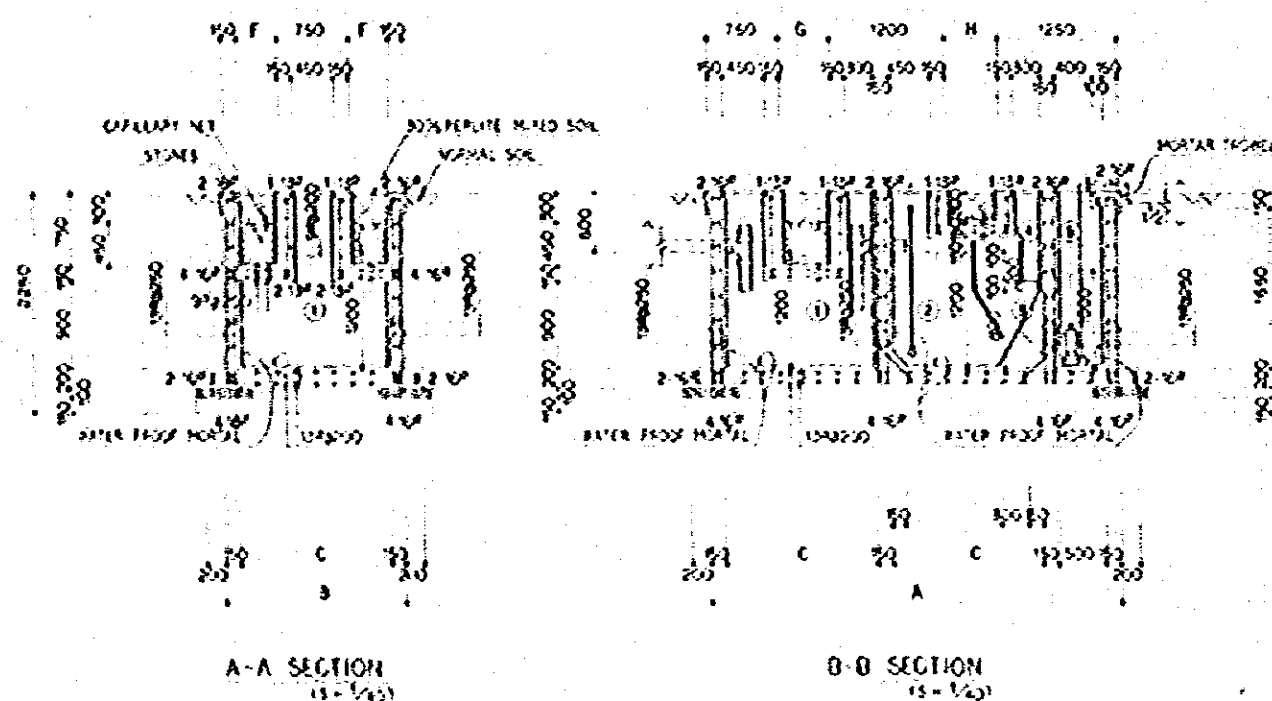
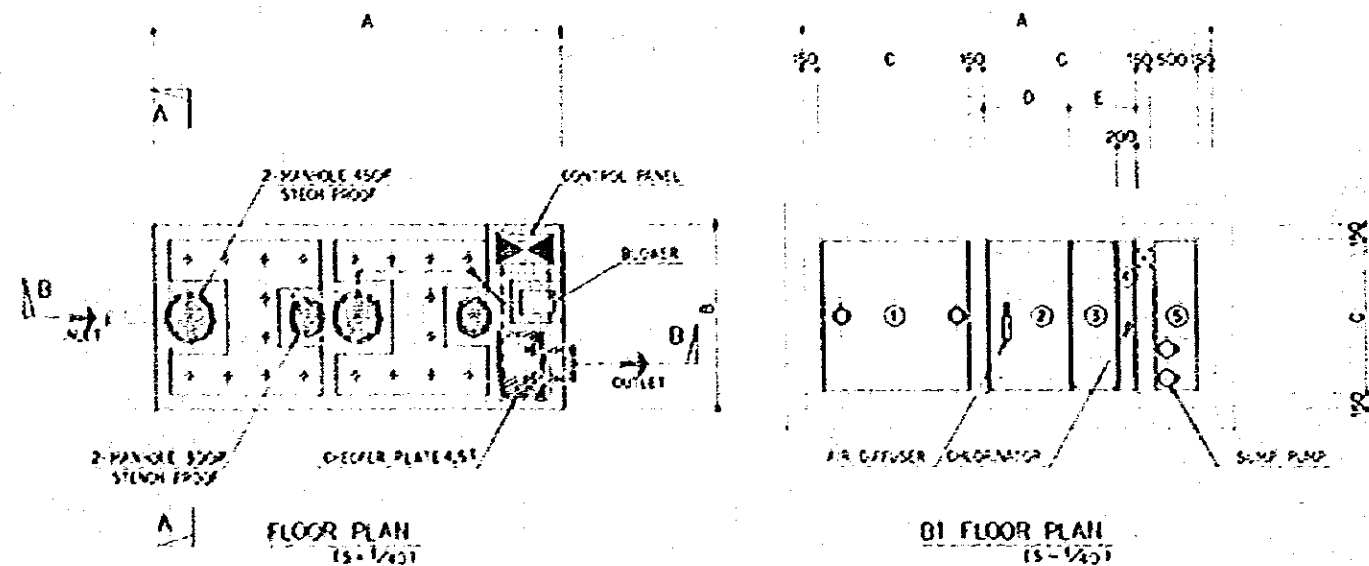
NOTE: 1. FLOOR SPACE SHALL BE 30'-115'-50"

10/77

1-50

1

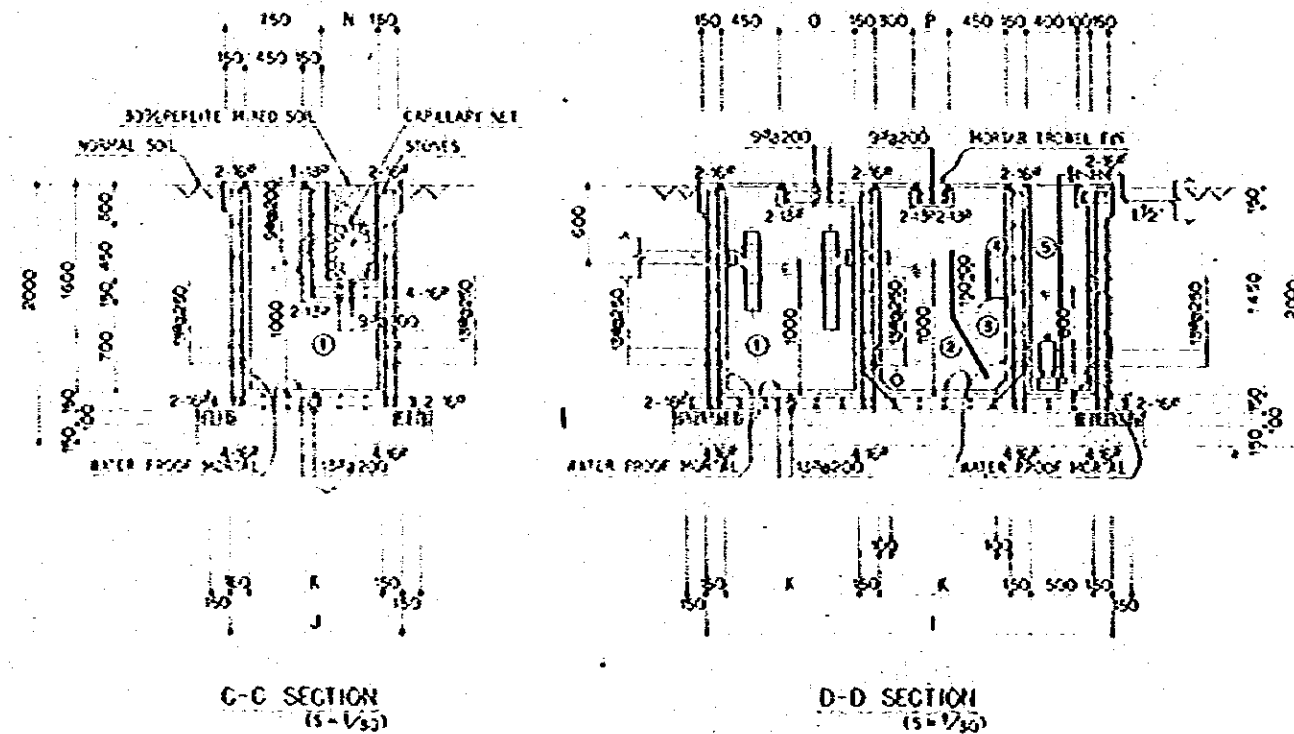
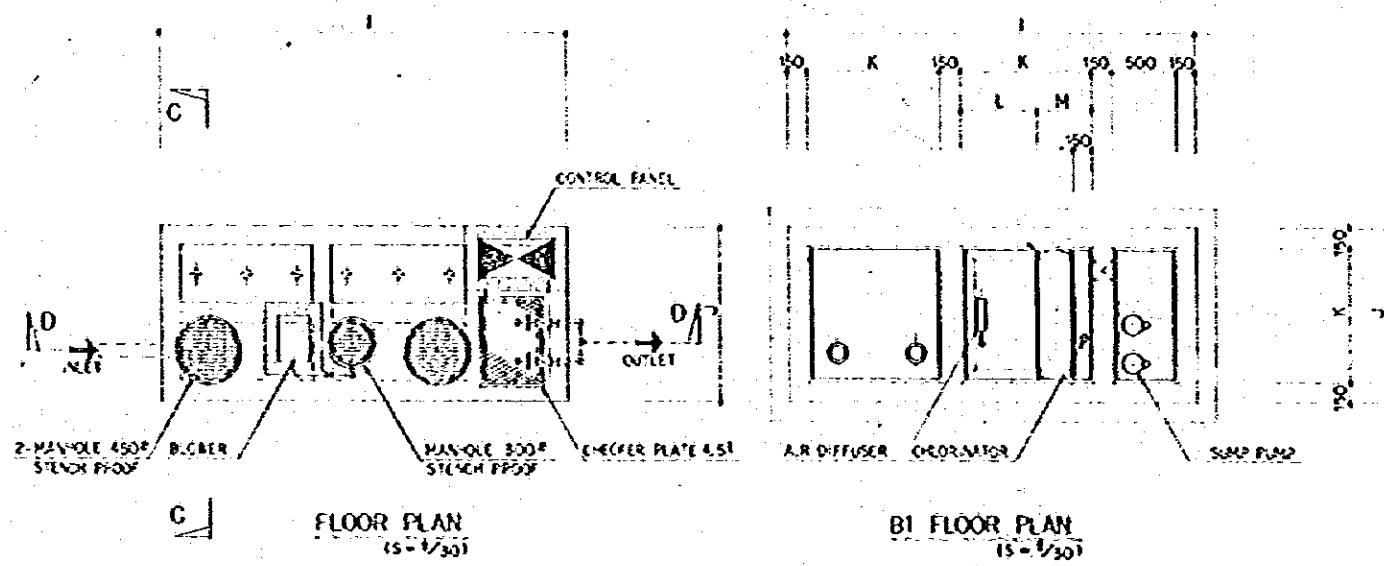
10/77



	A	B	C	D	E	F	G	H	ALERT	BOILER	SUMP PUMP
NO. PLACES	4100	1800	1800	800	700	425	510	510	5'	31" x 0.0175"	112" x 0.0175"
										0.125" x 0.11"	3" x 0.25" x 2"

NOTE: POWER SOURCE
SHALL BE 120V/60Hz

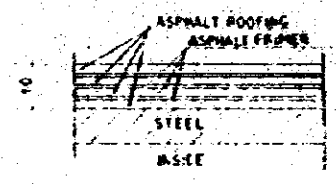
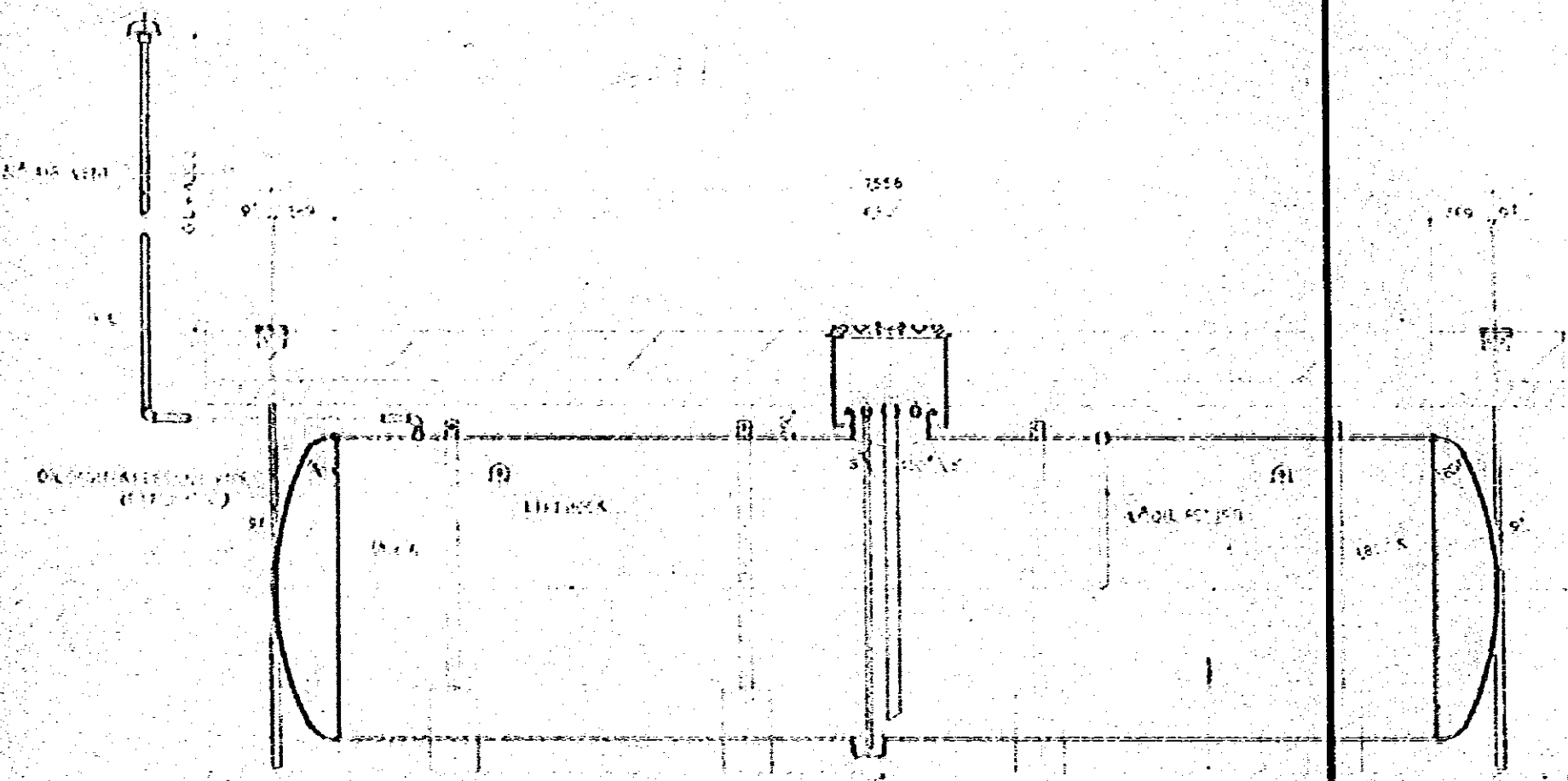
1	PAVATION TAX
2	SAFETY TAX
3	OPERATION TAX
4	CONNECTION TAX
5	NET FEE



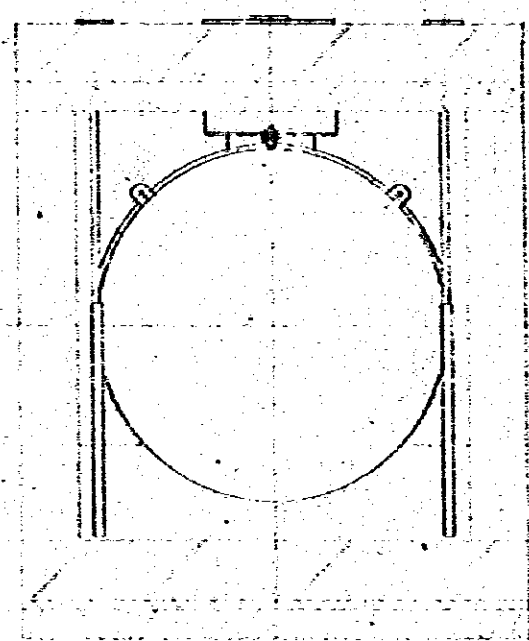
	I	J	K	L	M	N	O	P	ALERT	BOILER	SUMP PUMP
NO. PLACES	3200	1350	1050	600	450	450	600	300	4'	31" x 0.0175"	112" x 0.0175"
										0.125" x 0.11"	3" x 0.25" x 2"

NOTE: POWER SOURCE
SHALL BE 120V/60Hz

AUTOMOBILE REPAIR/MAINTENANCE WORKSHOP		10/2
PLANS		1-30
DETAIL OF SEPTIC TANK (2)		1-40
TOTAL INFORMATION REQUIRED		1-50

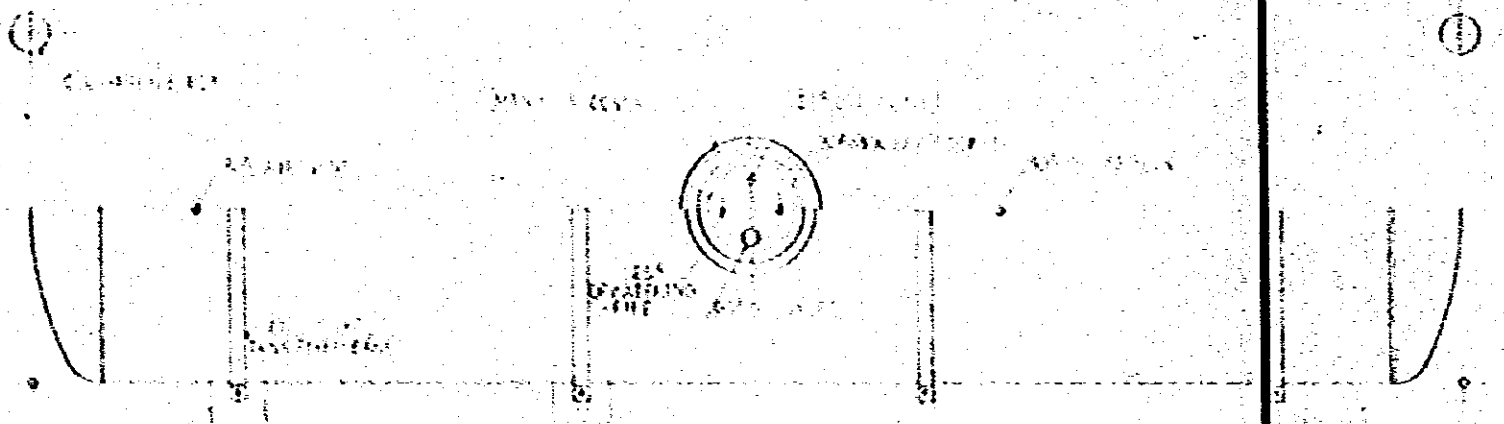


DETAIL OF SURFACE PROTECTION OF THE TANK

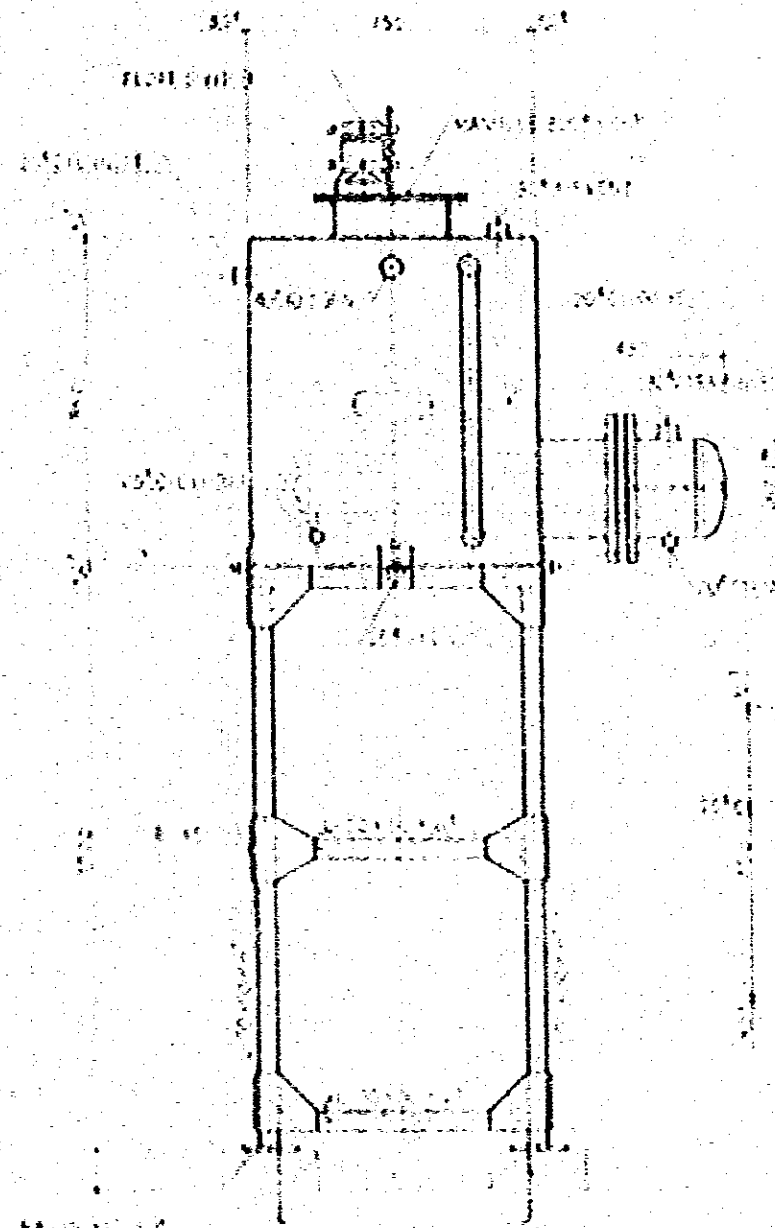


OIL STORAGE TANK (CI-1)
 SIZE 18' 0" x 10' 0"
 STEEL TANK 10' 0" x 10' 0"
 WALL THICKNESS 1/2" x 10' 0"
 INSULATION 1" x 10' 0"

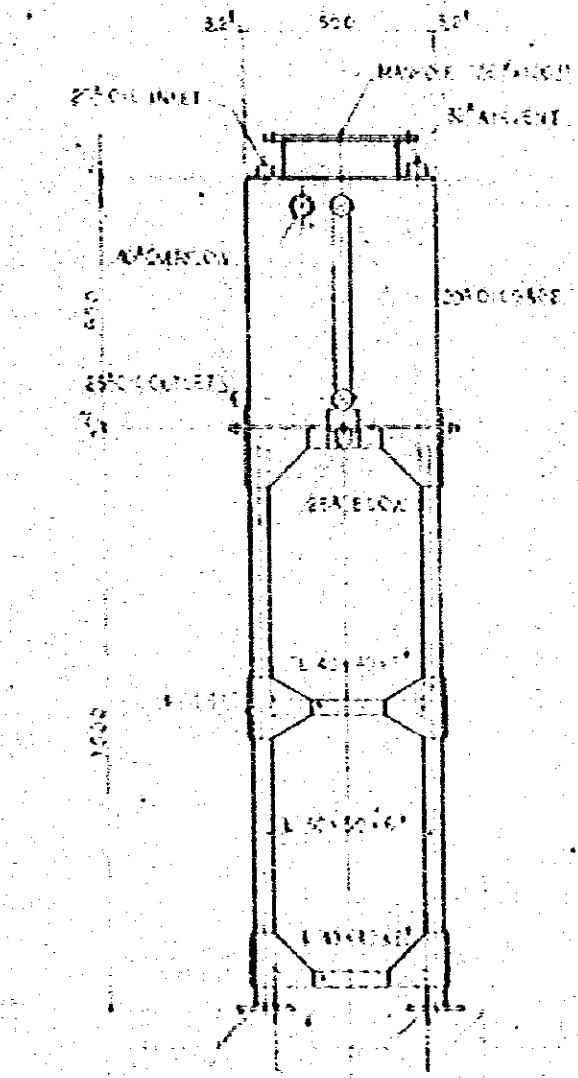
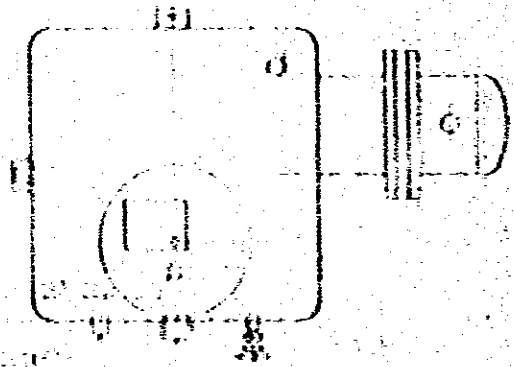
CAPACITY OF TANK
 MAXIMUM 11.4 x 10³ (6.3 x 10³) - 17.9 x 10³
 MINIMUM 11.4 x 10³ (6.3 x 10³) - 17.9 x 10³
 ESTIMATE 11.4 x 10³ (6.3 x 10³) - 17.9 x 10³



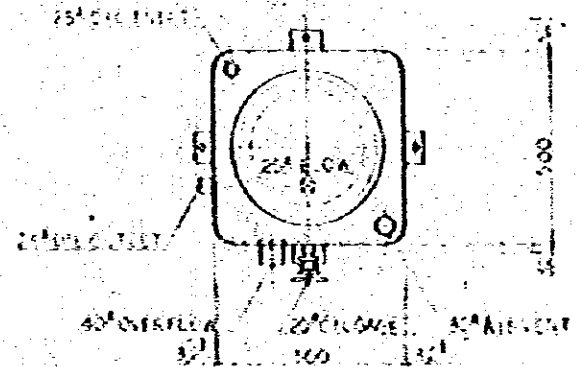
CONSTRUCTION PROJECT		10/7/75
AUTOMOBILE REPAIR MAINTENANCE WORKSHOP		
PLUMBING		
OIL STORAGE TANK		
UNIT INTERNATIONAL COOPERATIVE		

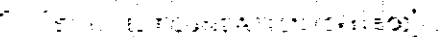
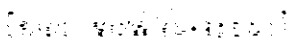


OIL DAY TANK (01-1)
 SIZE 300" X 600" X 650"
 STEEL PLATE BOTTOM, 10" DIA. COFF. 1/2"
 MANHOLE 300" X 600" X 32"
 PAINTING OUTSIDE ANTI-CORROSION PAINT
 STANDARDS 15000 LBS. CAPACITY 1-4014051



OIL DAY TANK (01-2)
 SIZE 300" X 600" X 650"
 STEEL PLATE BOTTOM, 10" DIA. COFF. 1/2"
 MANHOLE 300" X 600" X 32"
 PAINTING OUTSIDE ANTI-CORROSION PAINT
 STANDARDS 15000 LBS. CAPACITY 1-4014051





2025 RELEASE UNDER E.O. 14176
 2025 RELEASE UNDER E.O. 14176

CONSTRUCTION PROJECT OF AUTOMOBILE REPAIR & MAINTENANCE WORKSHOP IN BANGLADESH	DATE 10/11/77 SCALE 1:100
TITLE OF DRAWING FLUSHING DETAIL OF FLEVED WATER TANK	DWG NO P 28
JAPAN INTERNATIONAL COOPERATION AGENCY	

JICA