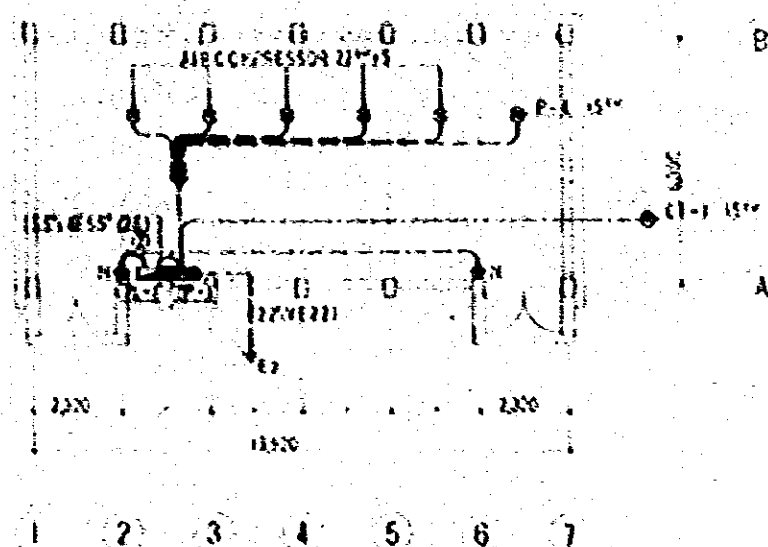
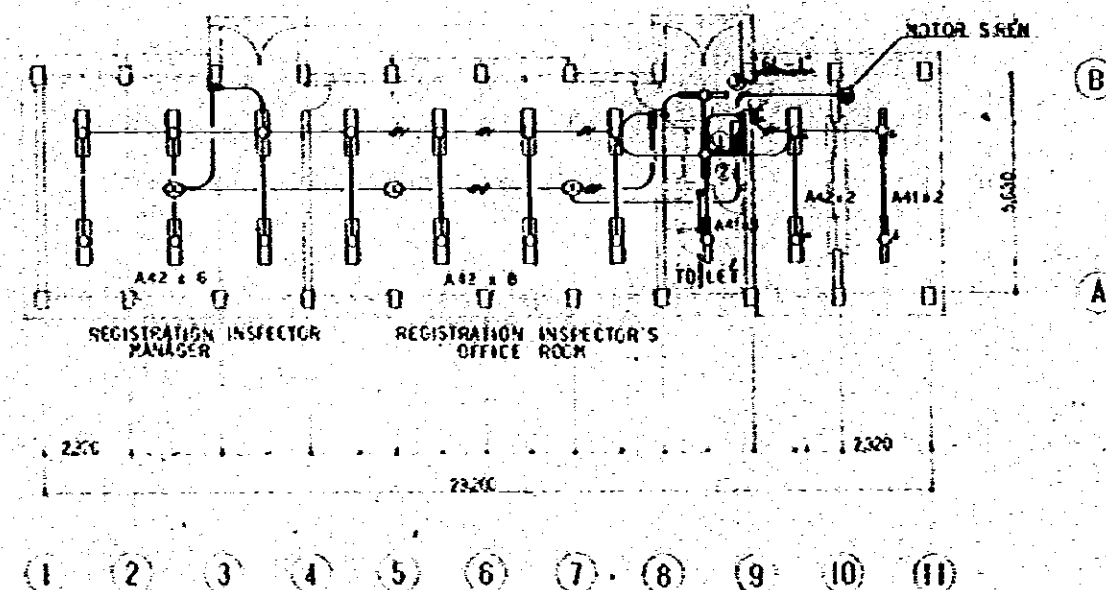


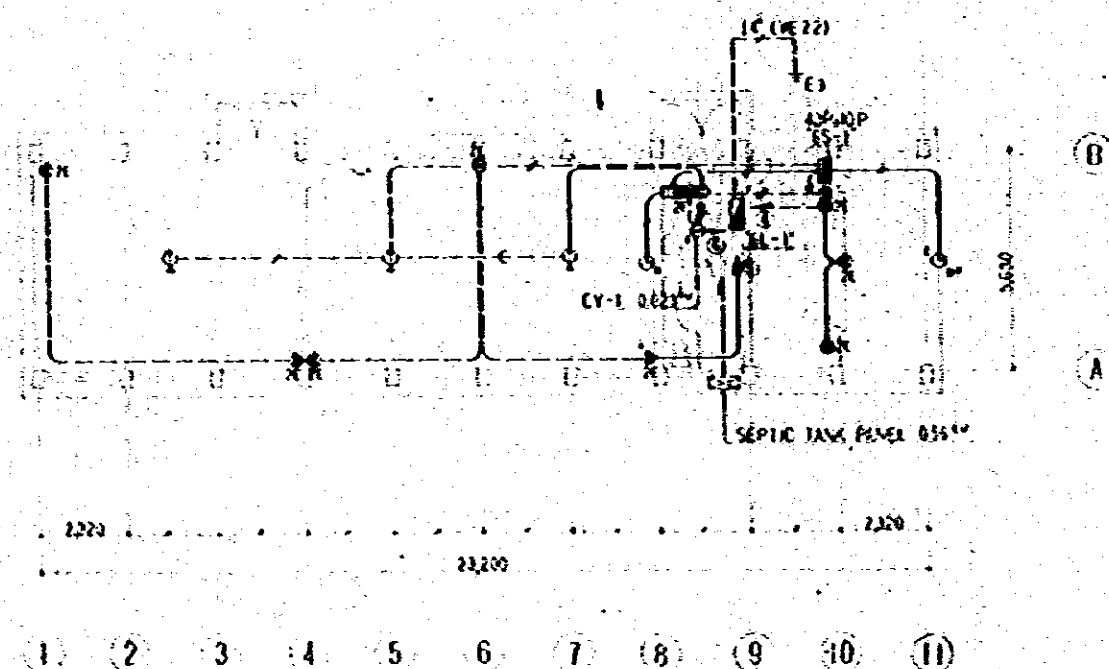
AIR COMPRESSOR HOUSE
FLOOR PLAN S:1/100



AIR COMPRESSOR HOUSE
FLOOR PLAN S:1/100

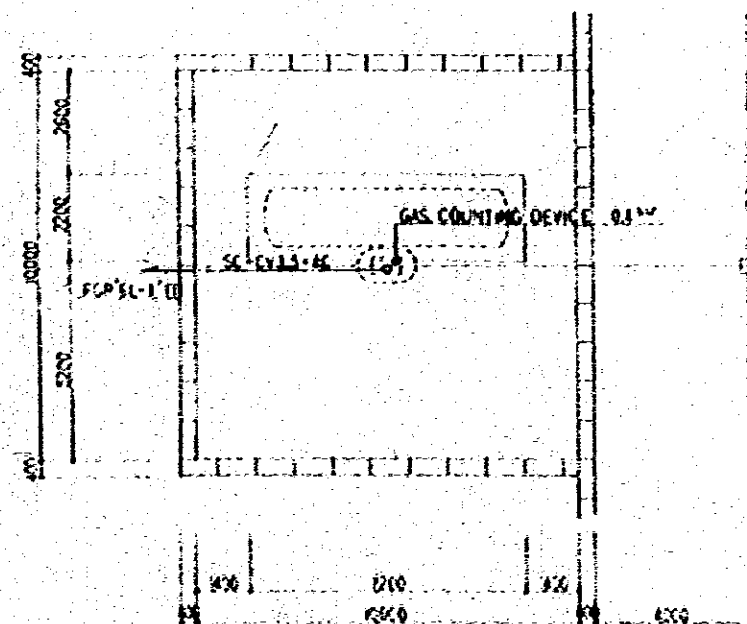


CHECK GATE PLAN S:1/100

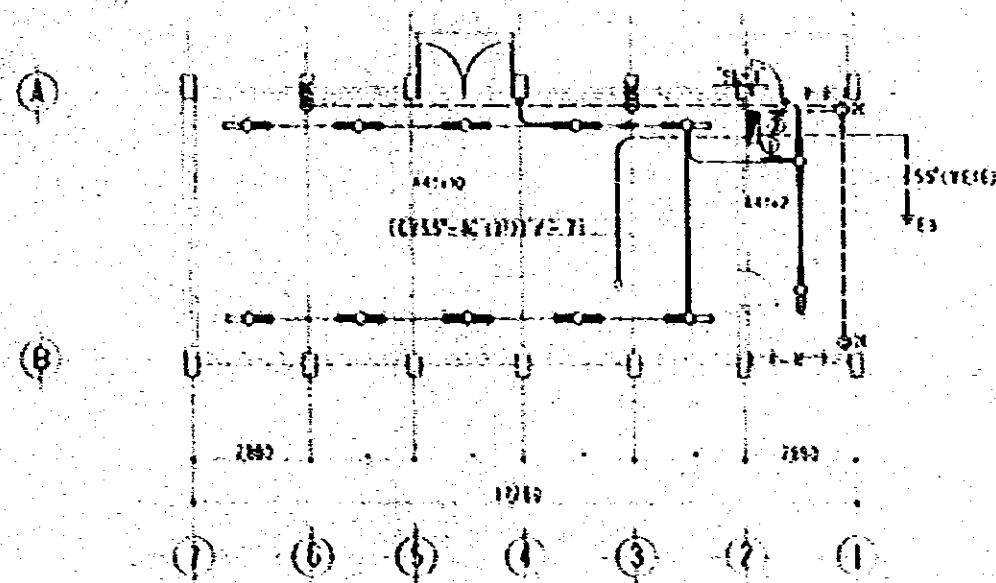


CHECK GATE PLAN S:1/100

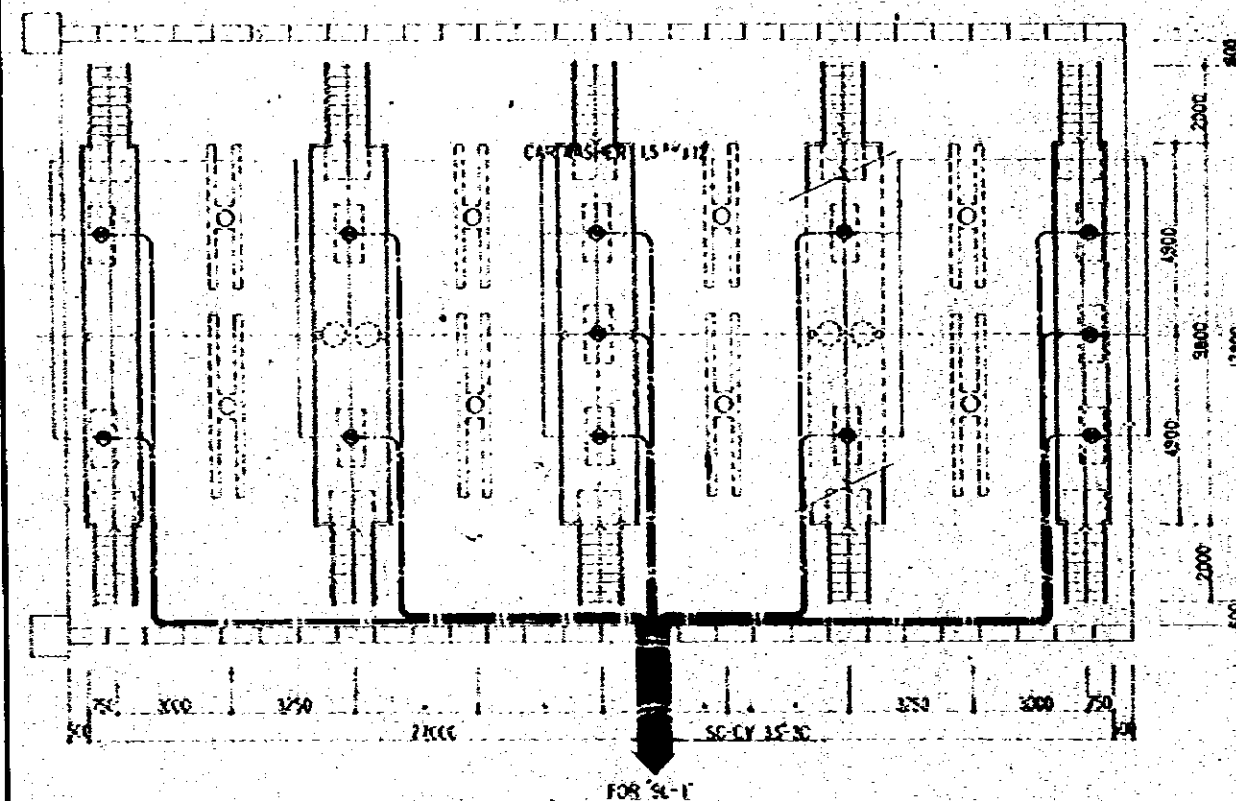
CONSTRUCTION PROJECT OF	10/70
AUTOMOBILE REPAIR & MAINTENANCE WORKSHOP IN BANGLADESH	1:100
TITLE OF DRAWING	E 26
JAPAN INTERNATIONAL COOPERATION AGENCY	



PLAN OF GAS STATION s: 1/100

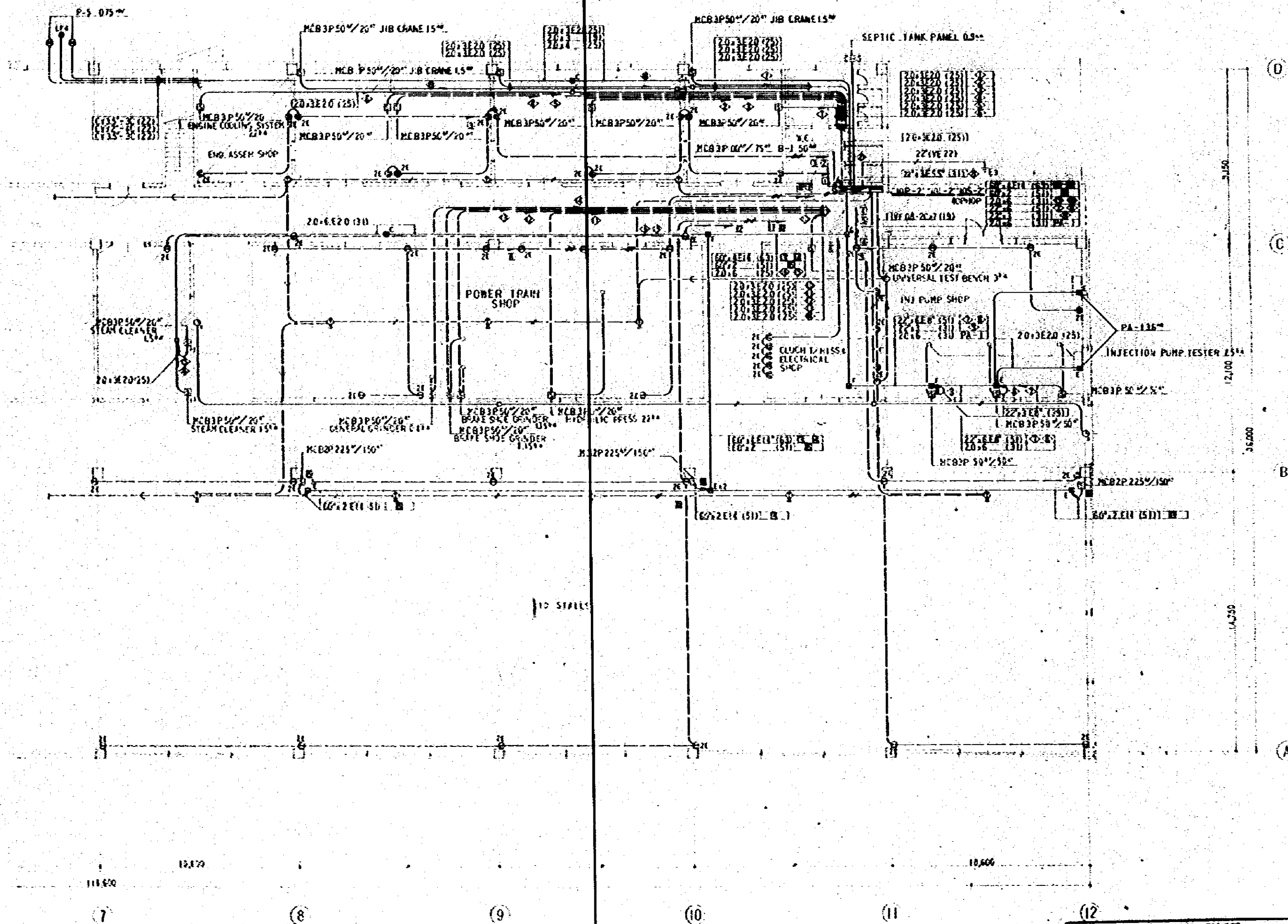


PLAN OF SUB-STATION s: 1/100



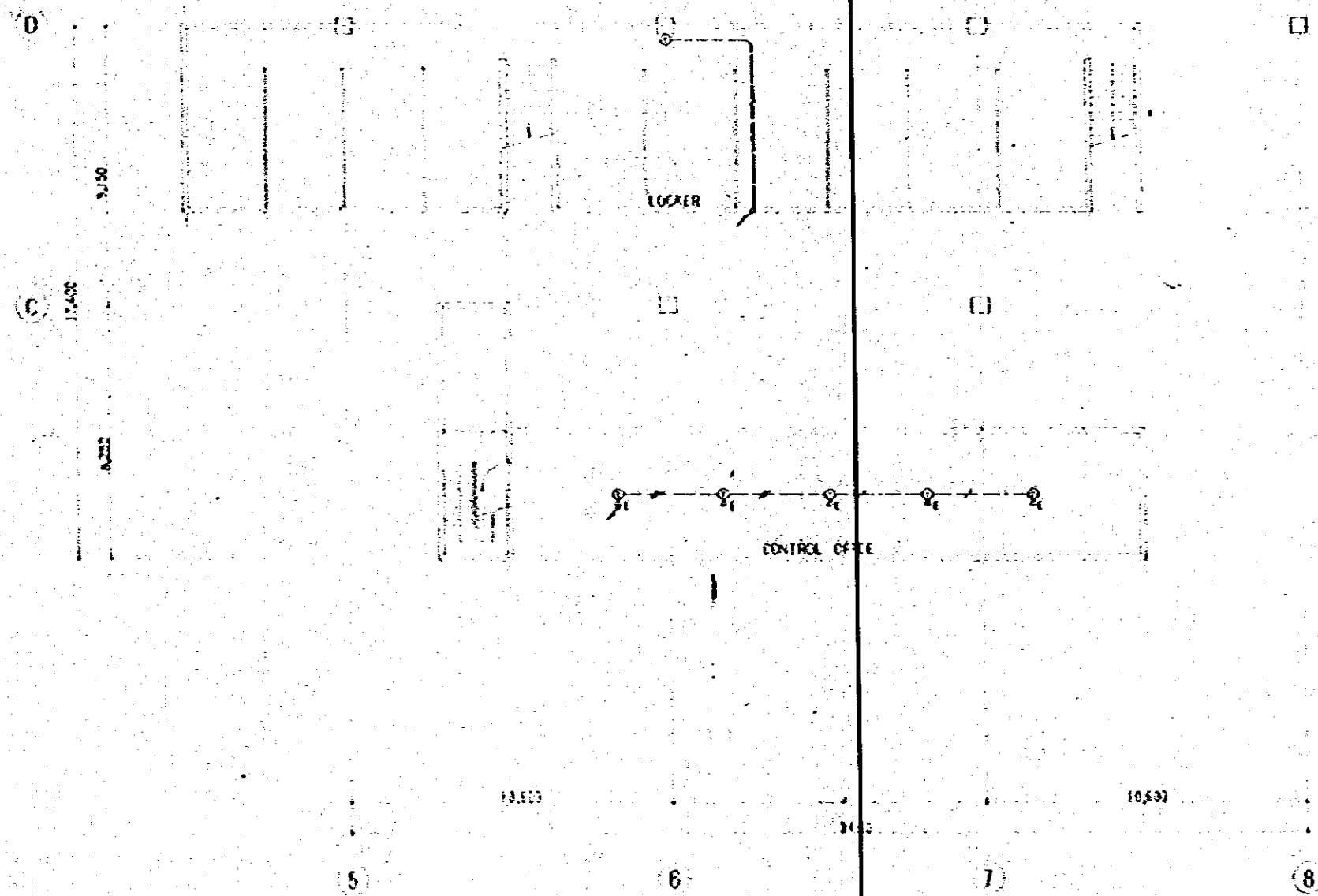
PLAN OF CAR WASHER s: 1/100

CONSTRUCTION PROJECT OF AUTOMOBILE REPAIR MAINTENANCE WORKSHOP IN BURELADZHI		10/10
TITLE OF DRAWING GAS-STATION, CAR-WASHER AND SUB-STATION PLAN		11100
JAPANESE INTERNATIONAL COOPERATIVE AGENCY		E 21



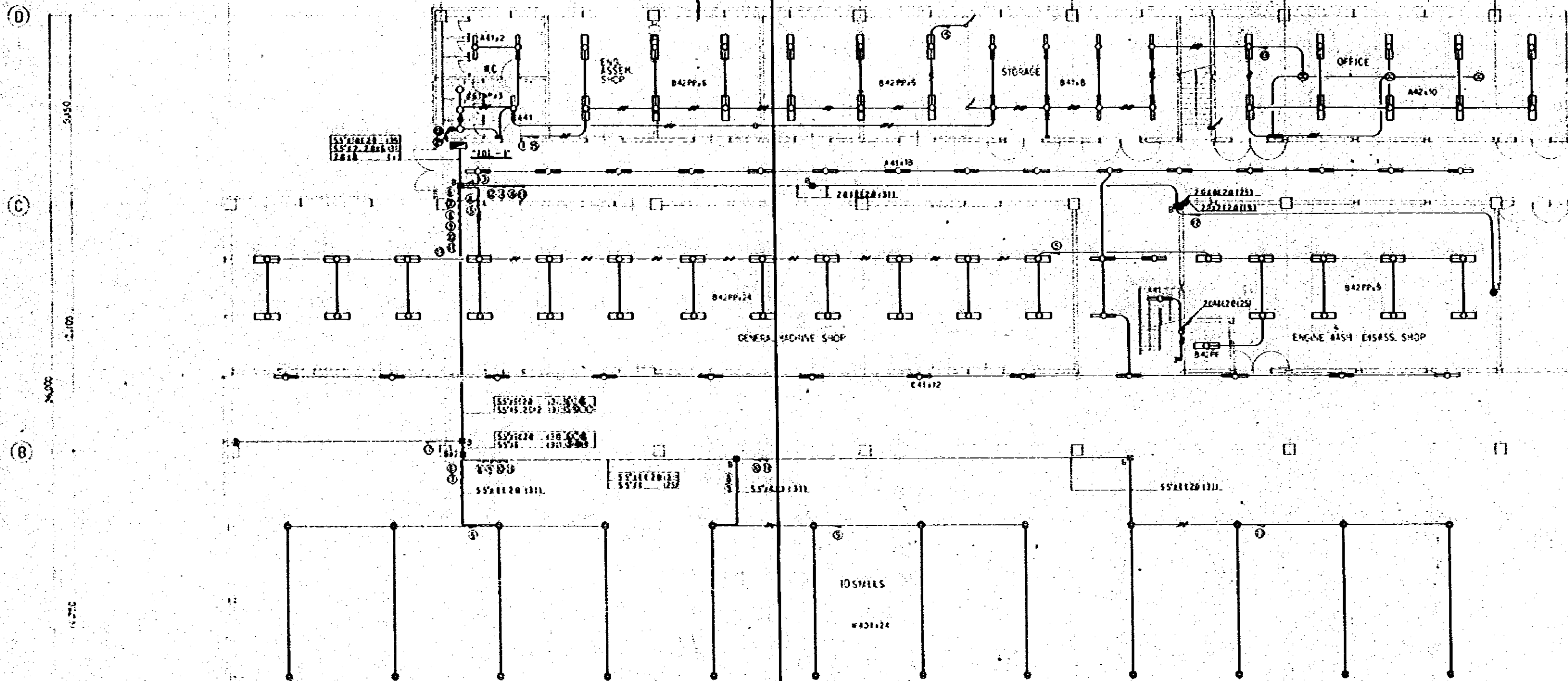
GROUND FLOOR PLAN OF HEAVY REPAIR FACTORY S : 1/100

CONSTRUCTION PROJECT OF		10/70
AUTOMOBILE REPAIR & MAINTENANCE WORKSHOP IN BANGALORE		SCALE (1:100)
FILE NO.		ONE TO
HEAVY REPAIR FACTORY PLAN-2		E 23
UNION INTERNATIONAL COOPERATION AGENCY		



1st FLOOR PLAN OF HEAVY REPAIR FACTORY S: 1/100

CONSTRUCTION PROJECT		15/70
AUTOMOBILE REPAIR & MAINTENANCE WORKSHOP		SCALE
IN BANGLADESH		1:100
TITLE OF DRAWING		SHEET NO.
HEAVY REPAIR FACTORY PLAN-3		E
		59
JAPAN INTERNATIONAL COOPERATION AGENCY		

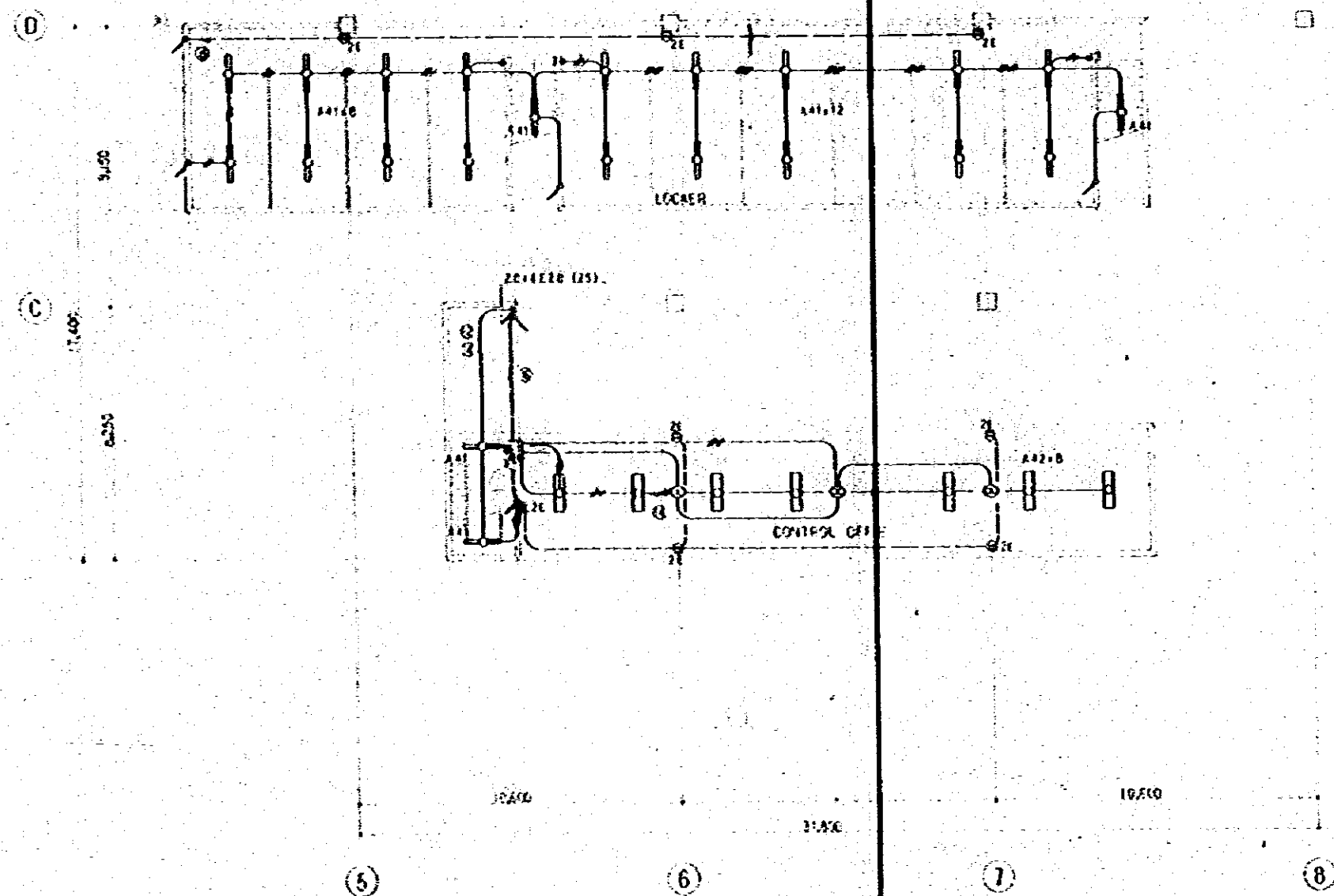


GROUND FLOOR PLAN OF HEAVY REPAIR FACTORY S:1/100

CONSTRUCTION PROJECT		7/6/70
AUTOMOBILE REPAIR & MAINTENANCE WORKSHOP		SCALE 1:100
IN BANGLADESH		
TITLE OF DRAWING		DRG. NO.
HEAVY REPAIR FACTORY PLAN - 1		E-31
JAPAN INTERNATIONAL COOPERATION AGENCY		

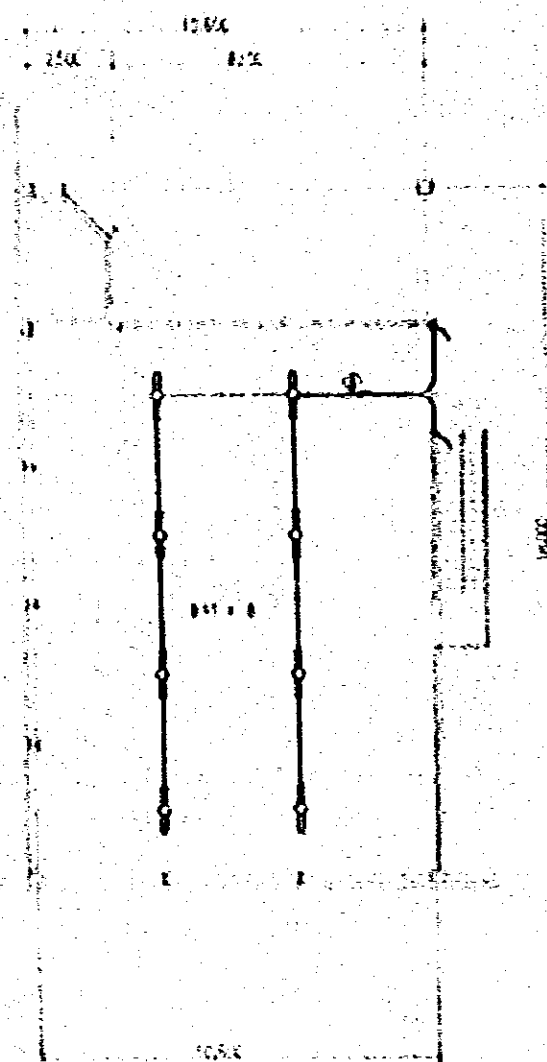


(12)	CONSTRUCTION OF PROJECT	16/78
	AUTOMOBILE REPAIR & MAINTENANCE WORKSHOP IN BRUSSELS	SCALE 1:100
TITLE OF DESIGN		JOB NO.
HEAVY REPAIR FACTORY PLAN - 5		E 32
JAPAN INTERNATIONAL COOPERATION AGENCY		

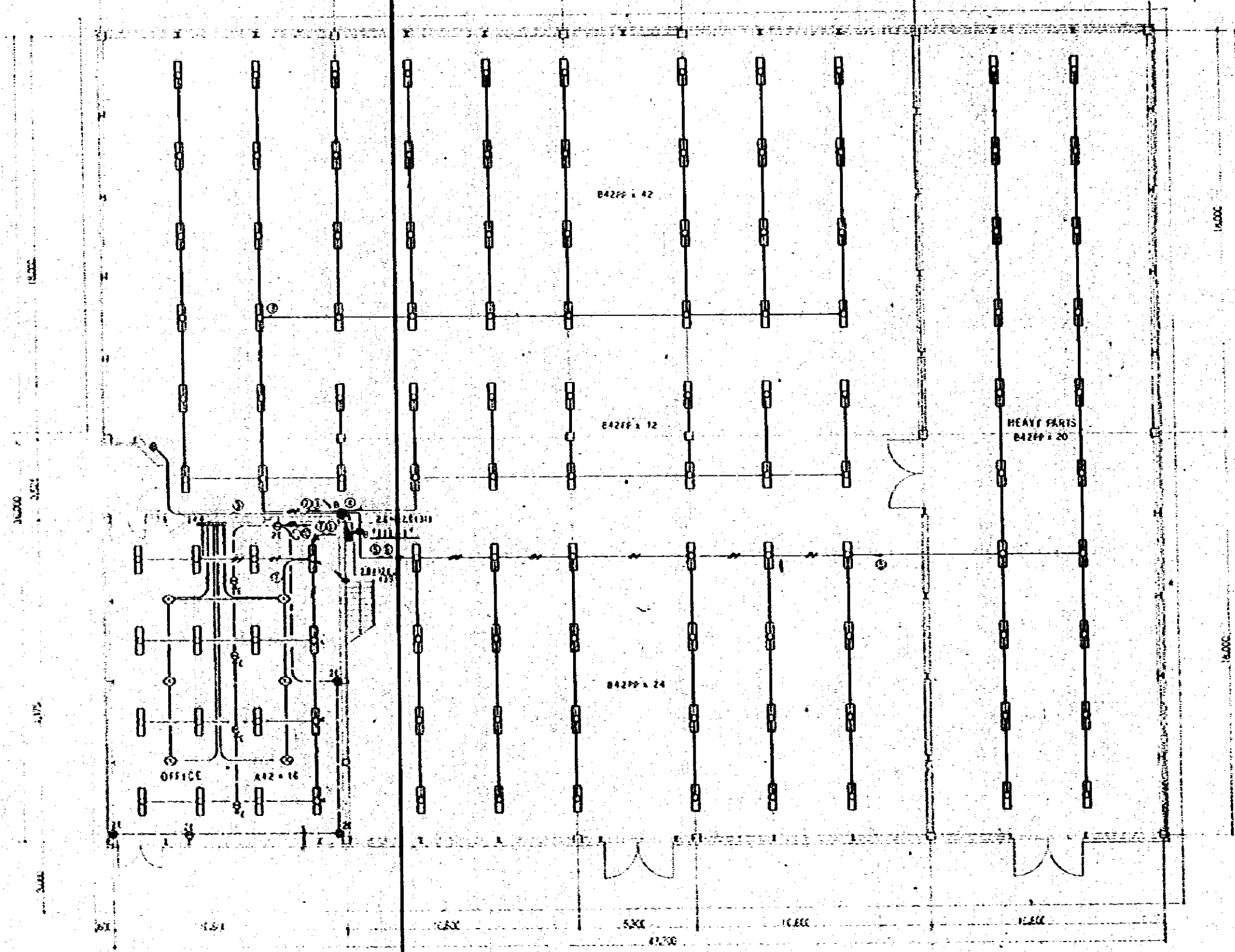


1st FLOOR PLAN OF HEAVY REPAIR FACTORY S: 1/100

CONSTRUCTION PROJECT		10/79
AUTOMOBILE REPAIR & MAINTENANCE WORKSHOP		12/60
IN BAKLARESH		12/60
TITLE OF DRAWING		12/60
HEAVY REPAIR FACTORY PLAN - C		12/60
JAPAN INTERNATIONAL COOPERATION AGENCY		12/60

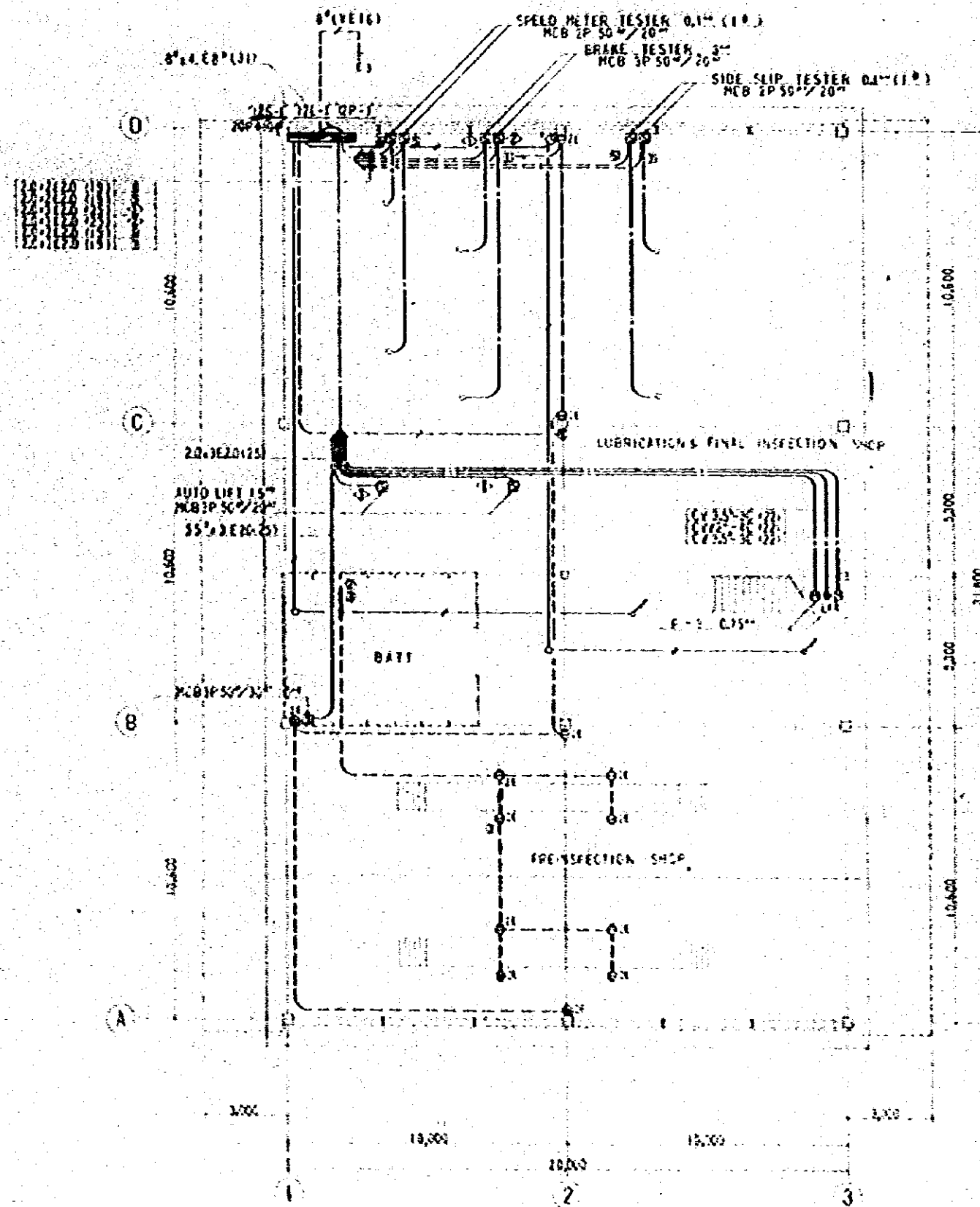


PLAN OF DECK S11/100

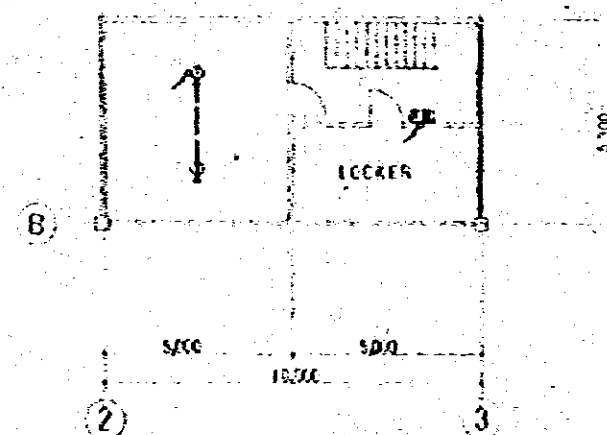


PLAN OF PARTS STORAGE S11/100

CONSTRUCTION PROJECT		DATE
AUTOMOBILE REPAIR & MAINTENANCE WORKSHOP		10/78
IN BANGLADESH		1:100
TITLE OF DRAWING		SCALE
PARTS STORAGE PLAN - 2		2/5
JAPAN INTERNATIONAL COOPERATION AGENCY		



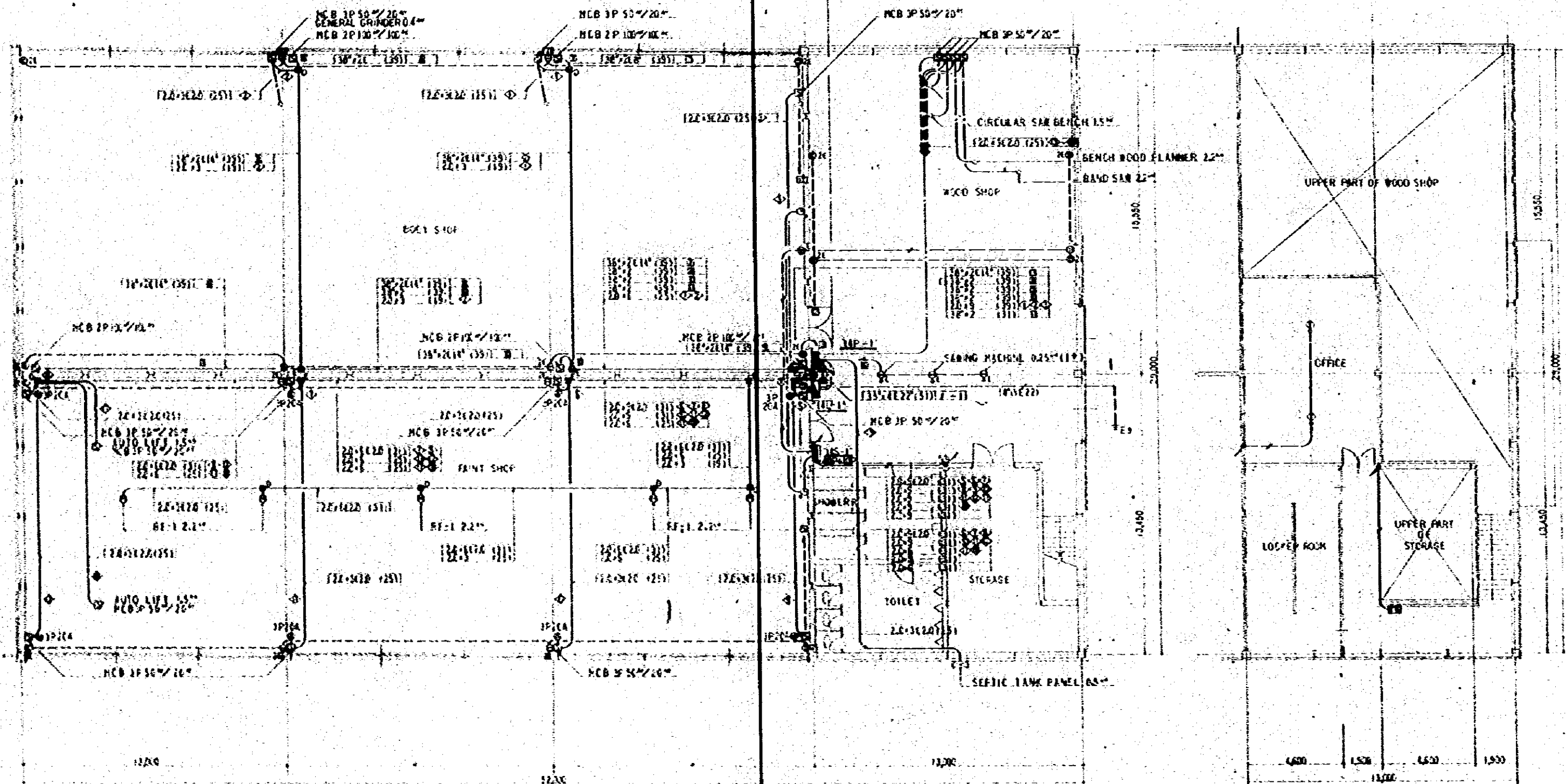
GROUND FLOOR PLAN OF INSPECTION FACTORY S: 1/100



1ST FLOOR PLAN OF INSP FACTORY S: 1/100

CONSTRUCTION PROJECT OF		10/78
AUTOMOBILE REPAIR & MAINTENANCE WORKSHOP		SCALE 1:100
IN BANGKOK		24-78
INSPECTION FACTORY PLAN-1 (PHASE-1 WORK)		E 38
JICA INTERNATIONAL COOPERATION AGENCY		

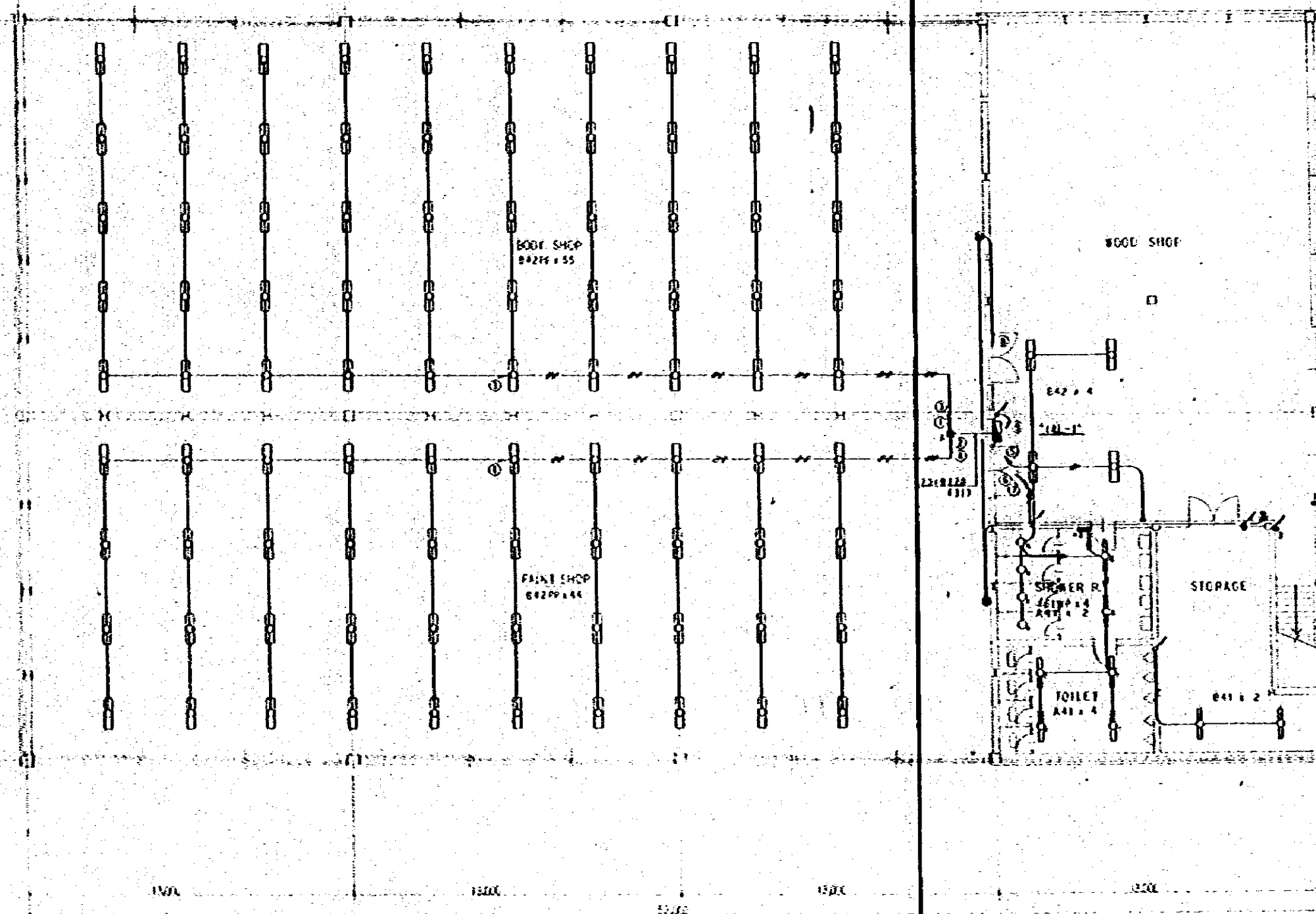
GROUND FLOOR PLAN OF PERIODICAL REP. FACTORY S: 1/100



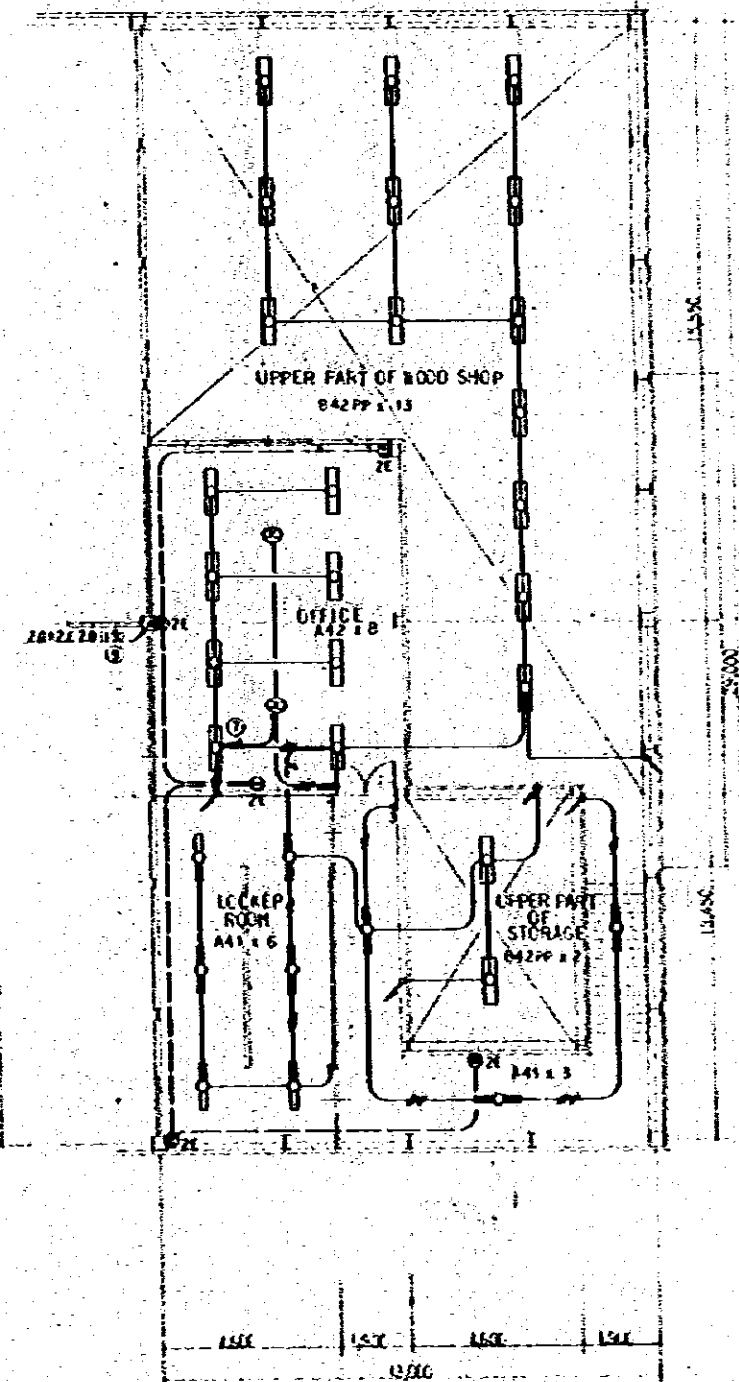
GROUND FLOOR PLAN OF PAINT & BODY FACTORY S:1/100

1st. FLOOR PLAN P & B FACTORY S:1/100

CONSTRUCTION PROJECT		DATE
AUTOMOBILE REPAIR & MAINTENANCE WORKSHOP		11/10
IN BANGALORE		
TITLE OF PROJECT		PAGE NO.
PAINT AND BODY FACTORY		1
PLAN-1 (PHASE-B WORK)		1/1
JAPAN INTERNATIONAL COOPERATION AGENCY		

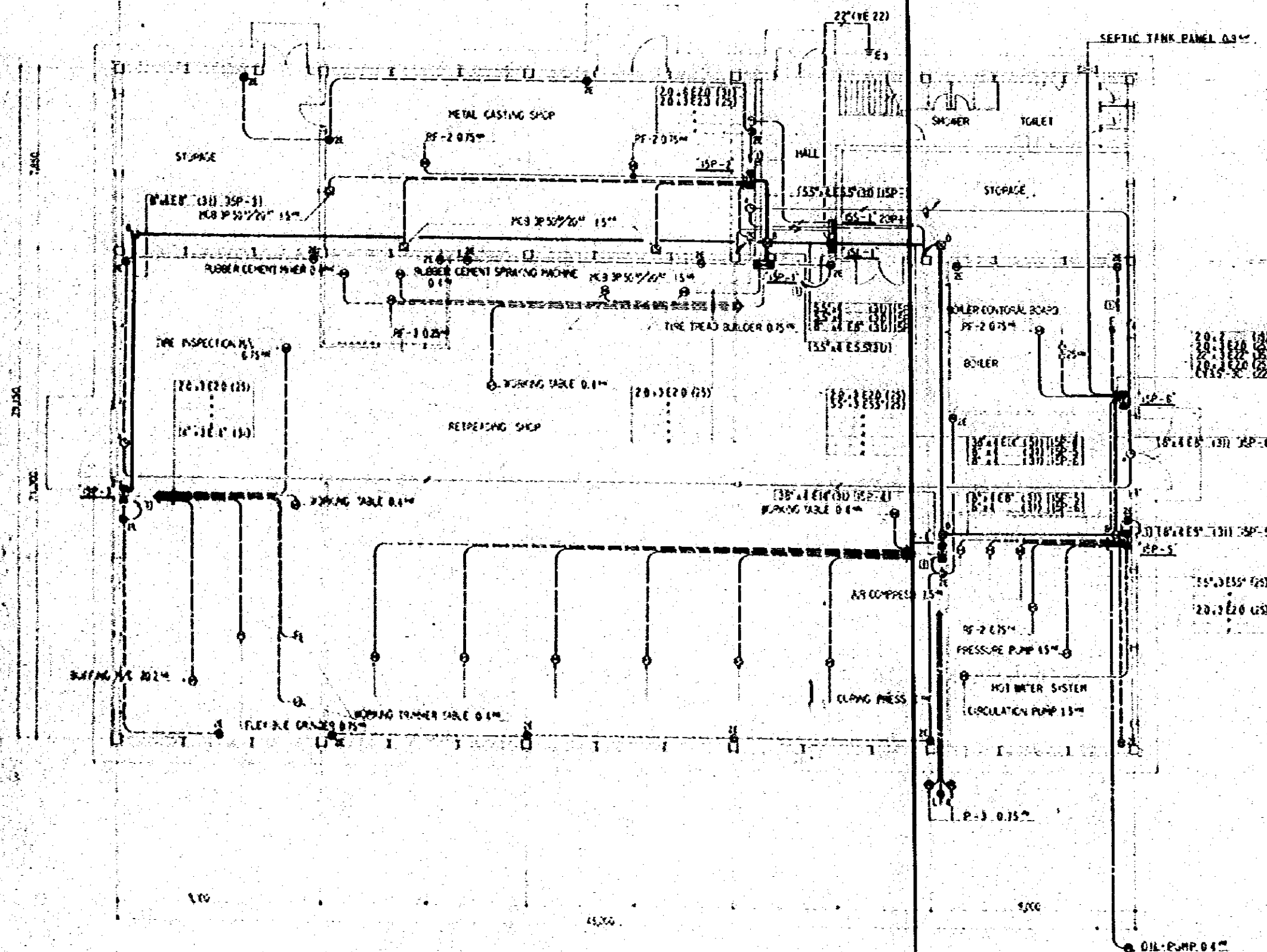


GROUND FLOOR PLAN OF PAINT & BODY FACTORY S 1/100



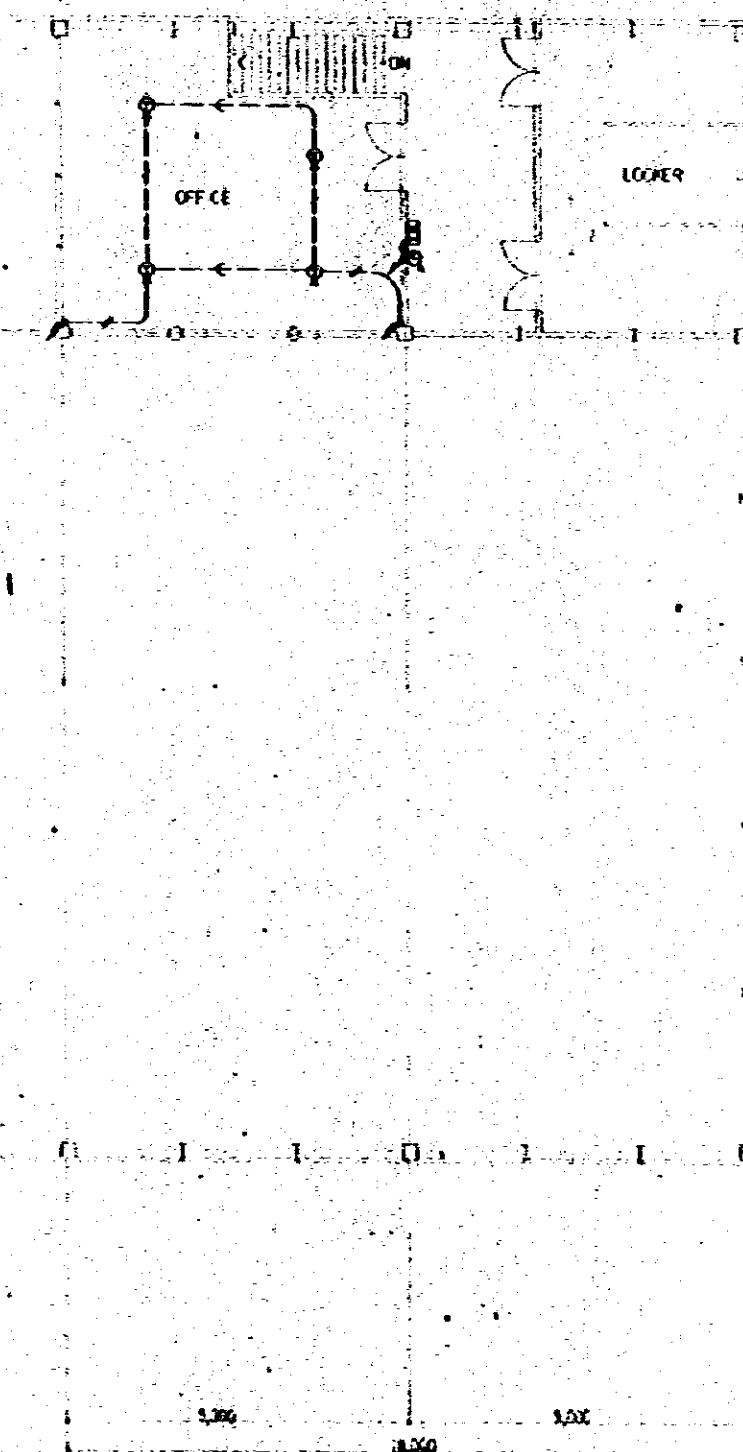
1ST FLOOR PLAN P & B FACTORY S 1/100

CONSTRUCTION PROJECT		10/78
AUTOMOBILE REPAIR & MAINTENANCE WORKSHOP		SCALE 1:100
TYPE OF BUILDING		CAD. NO.
PAINT AND BODY FACTORY		E
PLAN-2 (PHASE-BUILDING)		11
INTERNATIONAL COOPERATION AGENCY		



GROUND FLOOR PLAN OF RETREADING & METAL CASTING FACTORY

1/100



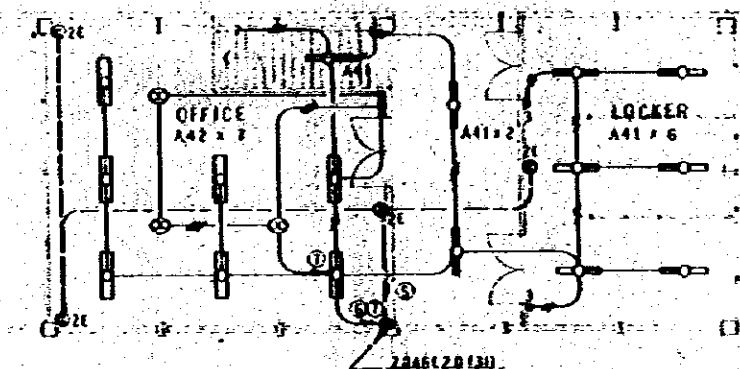
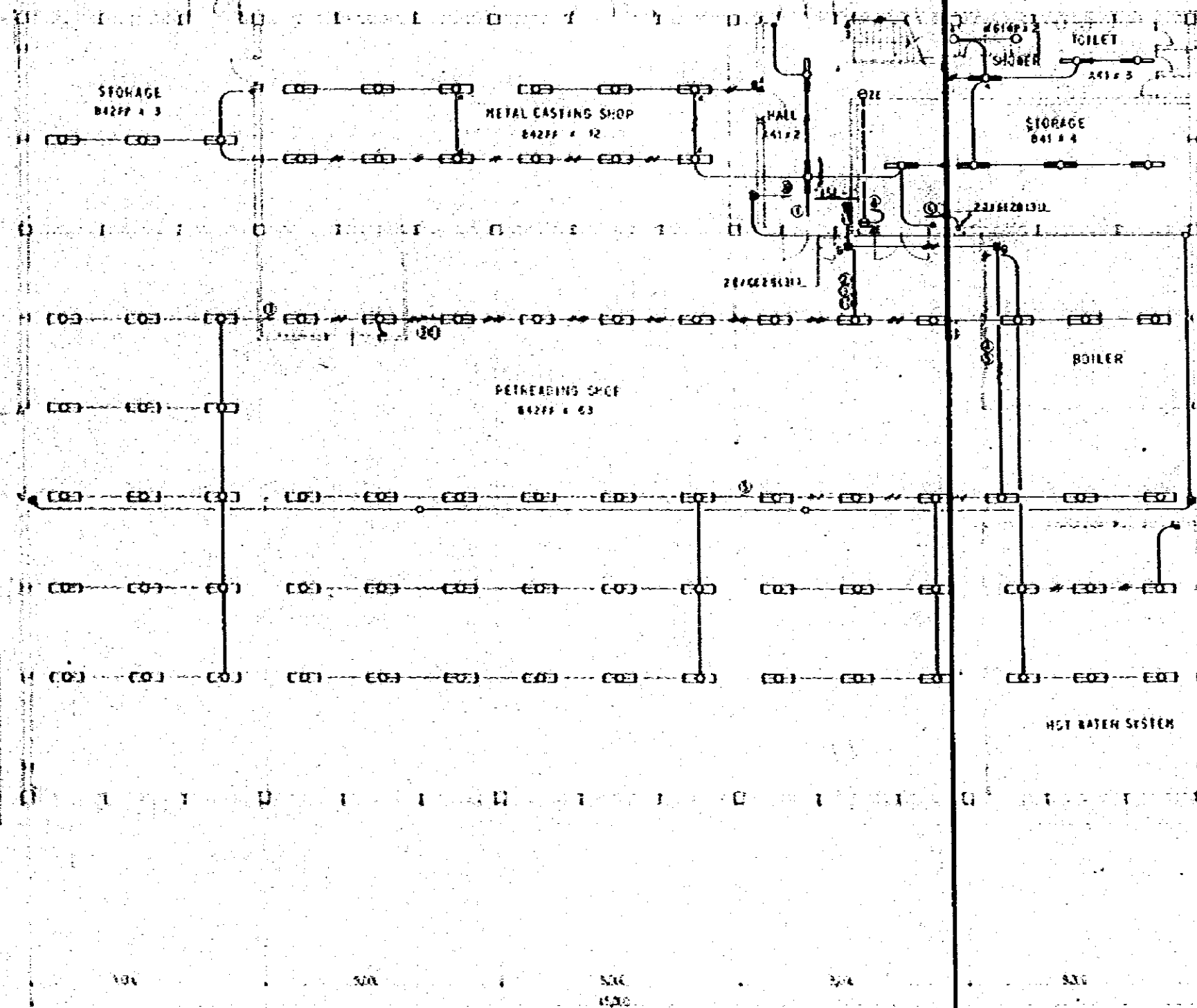
1ST FLOOR PLAN OF R & M FACTORY

7,800

29,500

21,500

CONSTRUCTION PROJECT		DATE
AUTOMOBILE REPAIR & MAINTENANCE WORKSHOP		10/78
IN BANGLADESH		SCALE
TITLE OF DRAWING		1:1100
RETREADING AND METAL CASTING FACTORY		DWG NO.
PLAN - I		E
JAPAN INTERNATIONAL COOPERATION AGENCY		42



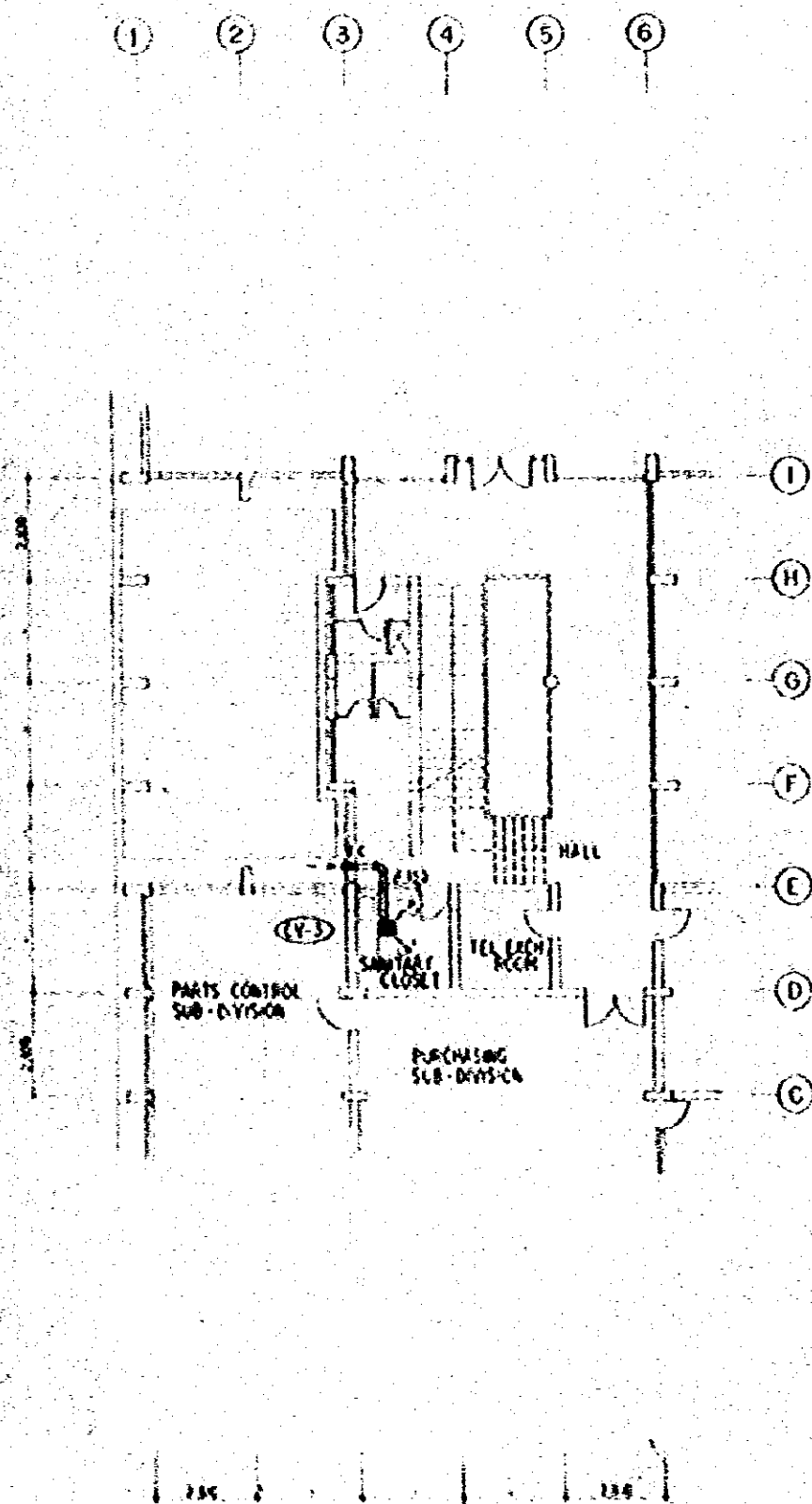
CONSTRUCTION PROJECT		DATE
AUTOMOBILE REPAIR & MAINTENANCE WORKSHOP		10/7/79
IN BANGLADESH		1122
TYPE OF WORK		SAC NO
RETREADING AND METAL CASTING FACTORY		E
PLAN-2		43
JOINT INTERNATIONAL COOPERATION AGENCY		

EQUIPMENT SCHEDULE

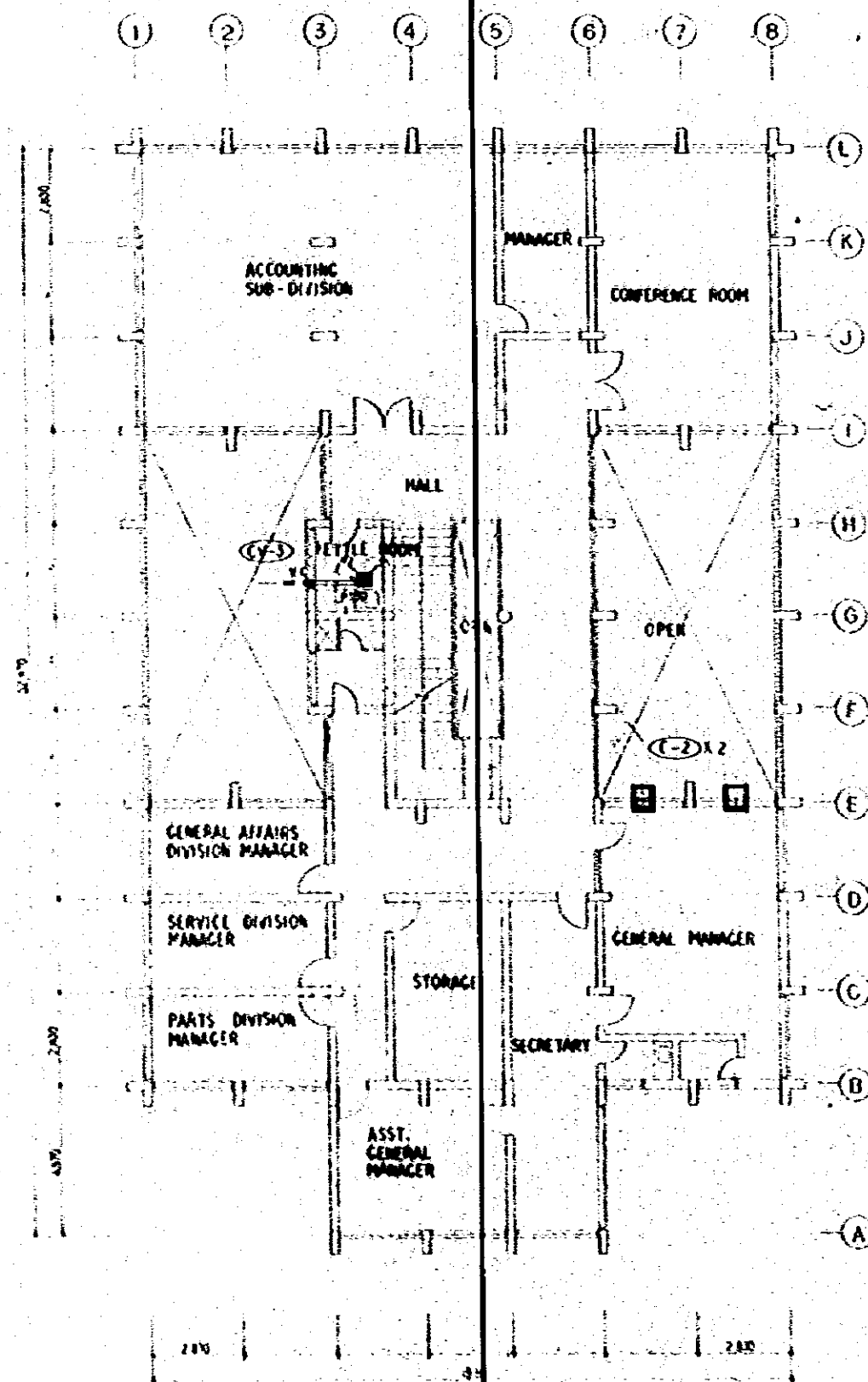
SYMBOL	NAME	SPECIFICATION	QUANTITY	ELECTRIC CHARACTER	BUILDING	LOCATION	ROOM	REMARKS	PHASE
PA-1	AIR COOLED SPLIT TYPE AIR CONDITIONER	COOLING CAPACITY 2100 TON / H (OUTDOOR DB 32.2°C) SUPPLY AIR VOLUME 1410 M³/H COMPRESSOR MOTOR 2.2 KW FAN MOTOR 0.1 KW (INDOOR UNIT) 0.05 KW (OUTDOOR UNIT) REFRIGERANT R-22	2	3P 415V 50Hz 33 KW	HEAVY REPAIR FACTORY		INJ. PUMP SHOP	WITH SLUSHADE	I
C-1	WINDOW TYPE AIR CONDITIONER	COOLING CAPACITY 5560 TON / H (OUTDOOR DB 32.2°C) REFRIGERANT R-22 AIR EXHAUST ABLE TYPE	2	1P 240V 50Hz 3.4 KW	GENERAL OFFICE BUILDING		ADVISOR'S OFFICE ROOM (2F)		I
C-2	DITTO	COOLING CAPACITY 5020 TON / H (OUTDOOR DB 32.2°C) REFRIGERANT R-22 AIR EXHAUST ABLE TYPE	2	DITTO 2.4 KW	DITTO		GENERAL MANAGER ROOM (1F)		I
CF-1	DOUBLE SUCTION CENTRIFUGAL FAN	AIR FLOW 27000 M³/H STATIC PRESSURE 45 mm Hg	1	3P 415V 50Hz 2.5 KW	PARTS STORAGE		DECK		I
CF-2	DITTO	AIR FLOW 16200 M³/H STATIC PRESSURE 45 mm Hg	2	DITTO 5.5 KW	DITTO				
RFK-1	ROOF FAN	AIR FLOW 15000 M³/H STATIC PRESSURE 50 mm Hg	1	DITTO 3.7 KW	CAFETERIA		KITCHEN		I
RFK-2	DITTO	AIR FLOW 15000 M³/H STATIC PRESSURE 50 mm Hg	1	DITTO 3.7 KW	DITTO		DITTO		I
RFK-3	DITTO	AIR FLOW 2400 M³/H STATIC PRESSURE 50 mm Hg	1	DITTO 2.2 KW	DORMITORY		KITCHEN		I
RF-1	ROOF FAN	AIR FLOW 32000 M³/H	5	DITTO 2.2 KW	PAINT AND BODY FACTORY		PAINT SHOP		II
RF-2	DITTO	AIR FLOW 11200 M³/H	9	DITTO 0.75 KW	PARTS STORAGE REPAIRING AND METAL CASTING		METAL CASTING SHOP BUTTER ROOM HOT WATER ROOM		I
RF-3	DITTO	AIR FLOW 2550 M³/H STATIC PRESSURE 10 mm Hg	1	DITTO 0.25 KW	REPAIRING AND METAL CASTING		CEMENT ROOM		I
CY-1	CENTRIFUGAL TYPE VENTILATING FAN	AIR FLOW 81 M³/H STATIC PRESSURE 5 mm Hg	1	1P 240V 50Hz 0.023 KW	CHECK GATE		KETTLE ROOM	WITH VENT CUP	I
CY-2	DITTO	AIR FLOW 165 M³/H STATIC PRESSURE 5 mm Hg	1	DITTO 0.035 KW	CAFETERIA		TOILET	DITTO	I
CY-3	DITTO	AIR FLOW 350 M³/H STATIC PRESSURE 5 mm Hg	2	DITTO 0.05 KW	GENERAL OFFICE BUILDING		SANITARY CLOSET (GF) PERILE ROOM (1F)	DITTO	I

LEGEND

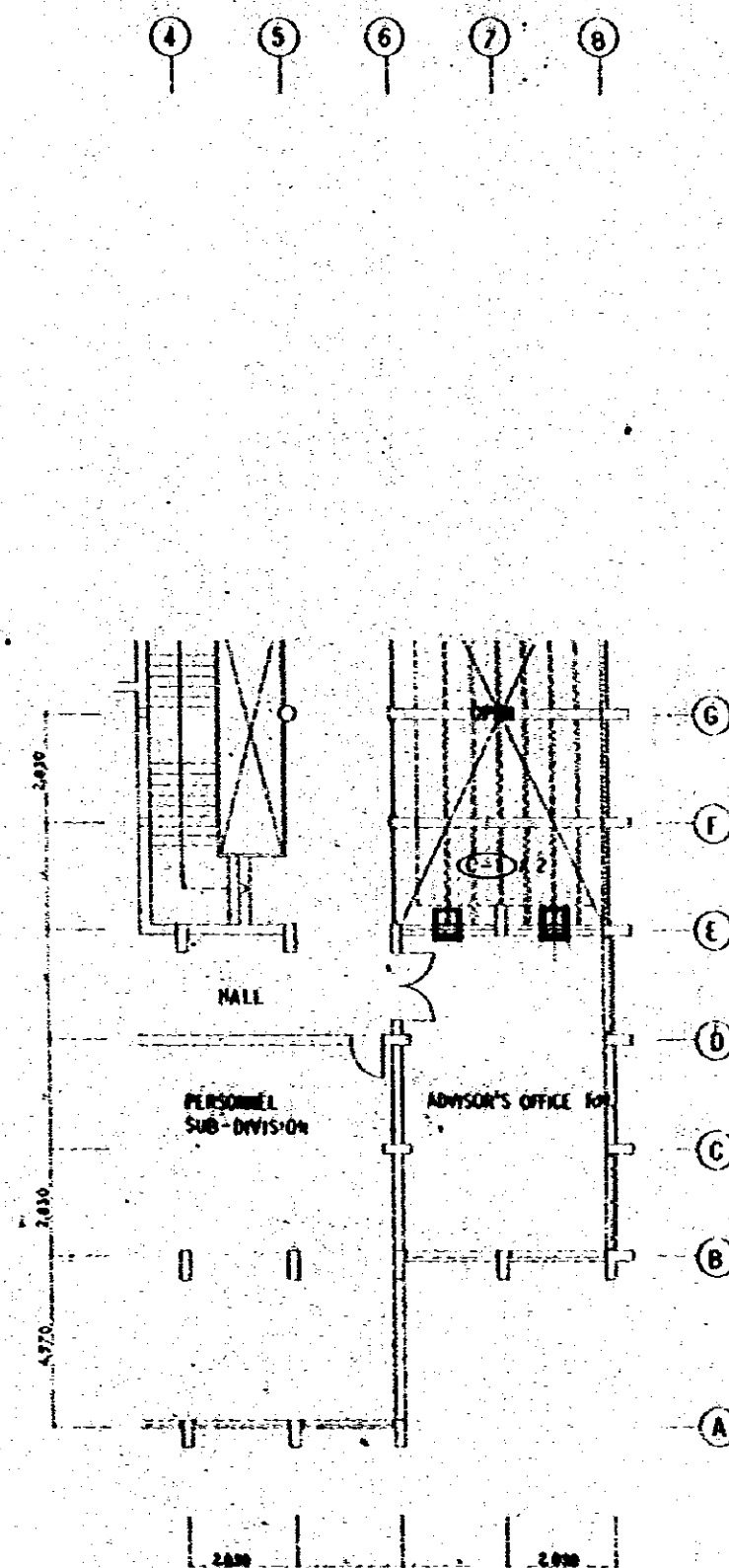
SYMBOL	NAME	SYMBOL	NAME
	SUPPLY AIR DUCT SECTION		REFRIGERANT LINE
	EXHAUST AIR DUCT SECTION		REFRIGERANT VALVE
	SUPPLY OUTLET (DOUBLE DEFLECTION GRILLE WITH OPPOSITE CAMERS)		DRAIN PIPE
	EXHAUST INLET (SINGLE DEFLECTION GRILLE WITH OPPOSITE CAMERS)		VENT CAP
	VOLUME FAN		



GROUND FLOOR PLAN



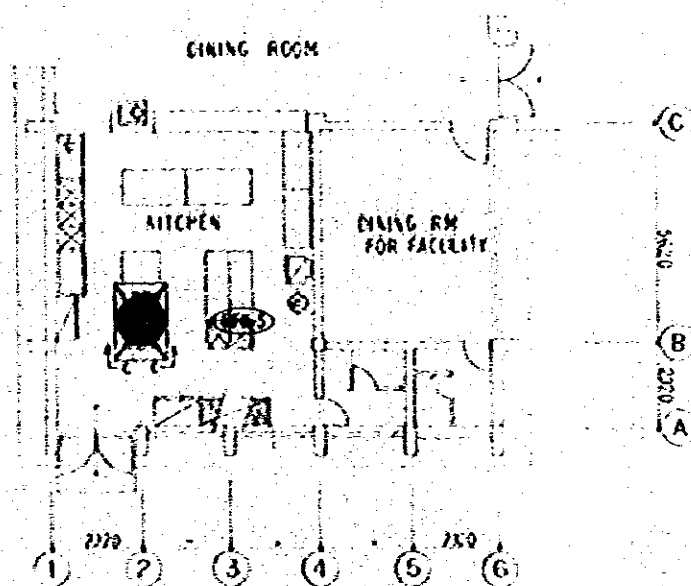
1ST FLOOR PLAN



2ND FLOOR PLAN

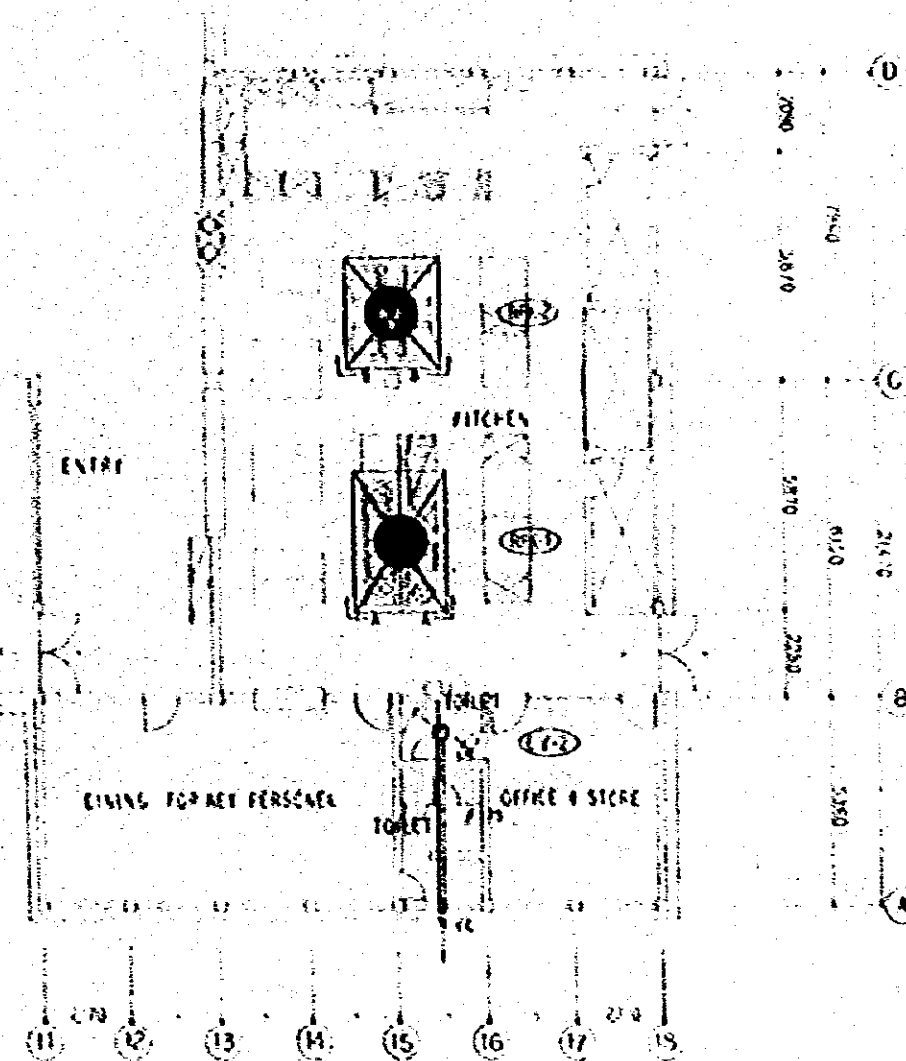


CONSTRUCTION PROJECT		10/78
AUTOMOBILE REPAIR MAINTENANCE WORKSHOP		SCALE
21 BAY LAYOUT		1:100
TITLE OF DRAWING		C.V.
COOLING AND VENTILATING		2
GROUND FLOOR, 1ST FLOOR & 2ND FLOOR		
PLAN OF GENERAL OFFICE BUILDING		



PLAN OF KITCHEN DORMITORY S-1-100

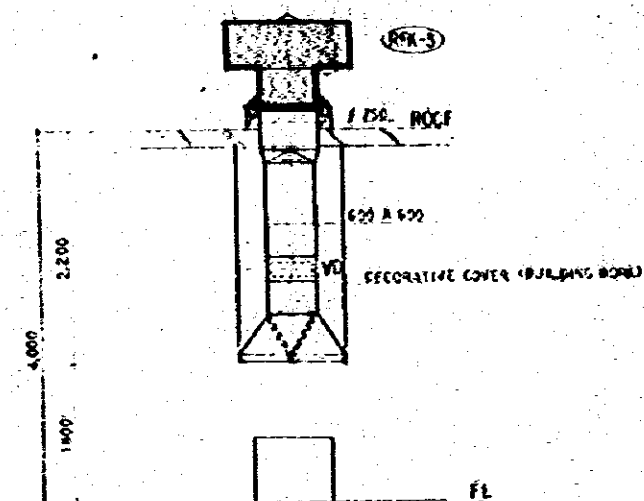
RSO
20001600
8150CWH
GREASE FILTER
426 X 630 X 45 X 12"



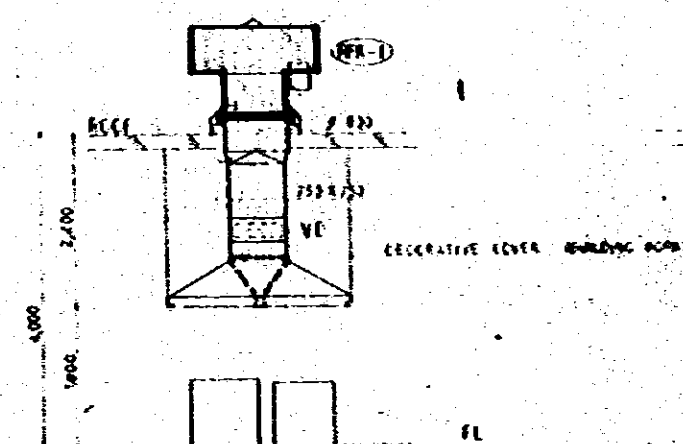
PLAN OF KITCHEN OF CAFETERIA S-1-100

RSO
20001600
8150CWH
GREASE FILTER
426 X 630 X 45 X 12"

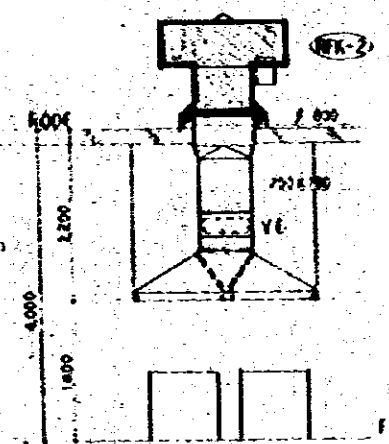
RSO
20001600
8150CWH
GREASE FILTER
426 X 630 X 45 X 12"



C-C SECTION S-1-50



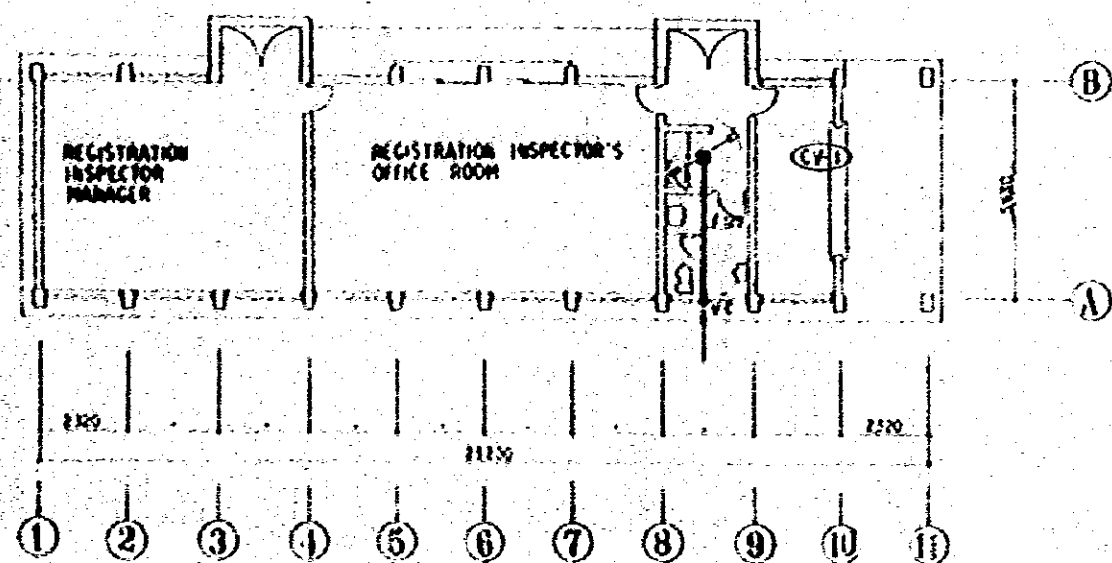
A-A SECTION S-1-50



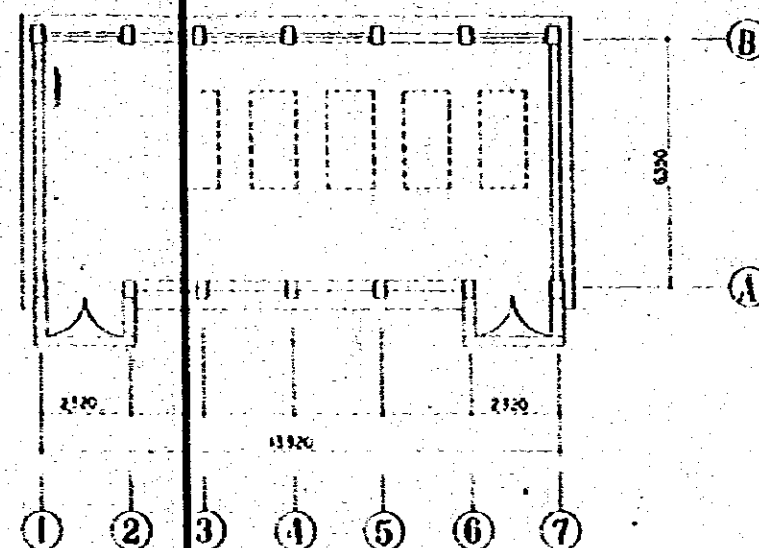
B-B SECTION S-1-50



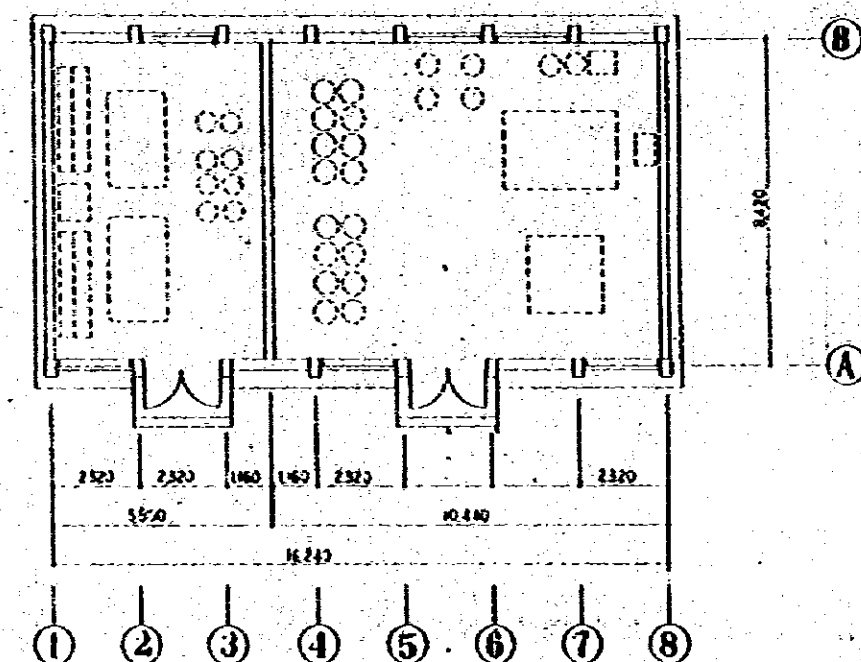
CONSTRUCTION PROJECT		10/76
AUTOMOBILE REPAIR & MAINTENANCE WORKSHOP		1-100
TELEGRAPH		1-100
COOLING AND VENTILATING		1-100
PLAN OF KITCHEN OF CAFETERIA & DORMITORY		CY 3
JAPAN INTERNATIONAL COOPERATION		



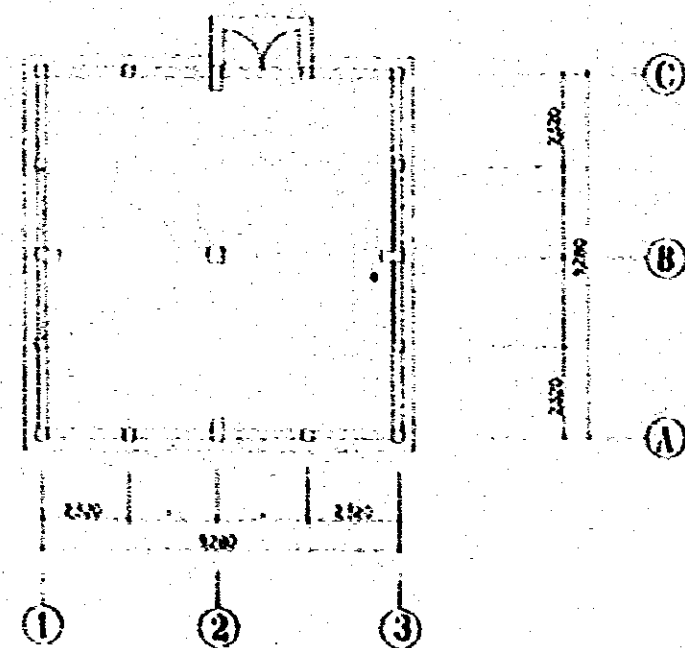
CHECK GATE PLAN S-1-100



AIR PLAN S-1-100
AIR COMPRESSOR HOUSE

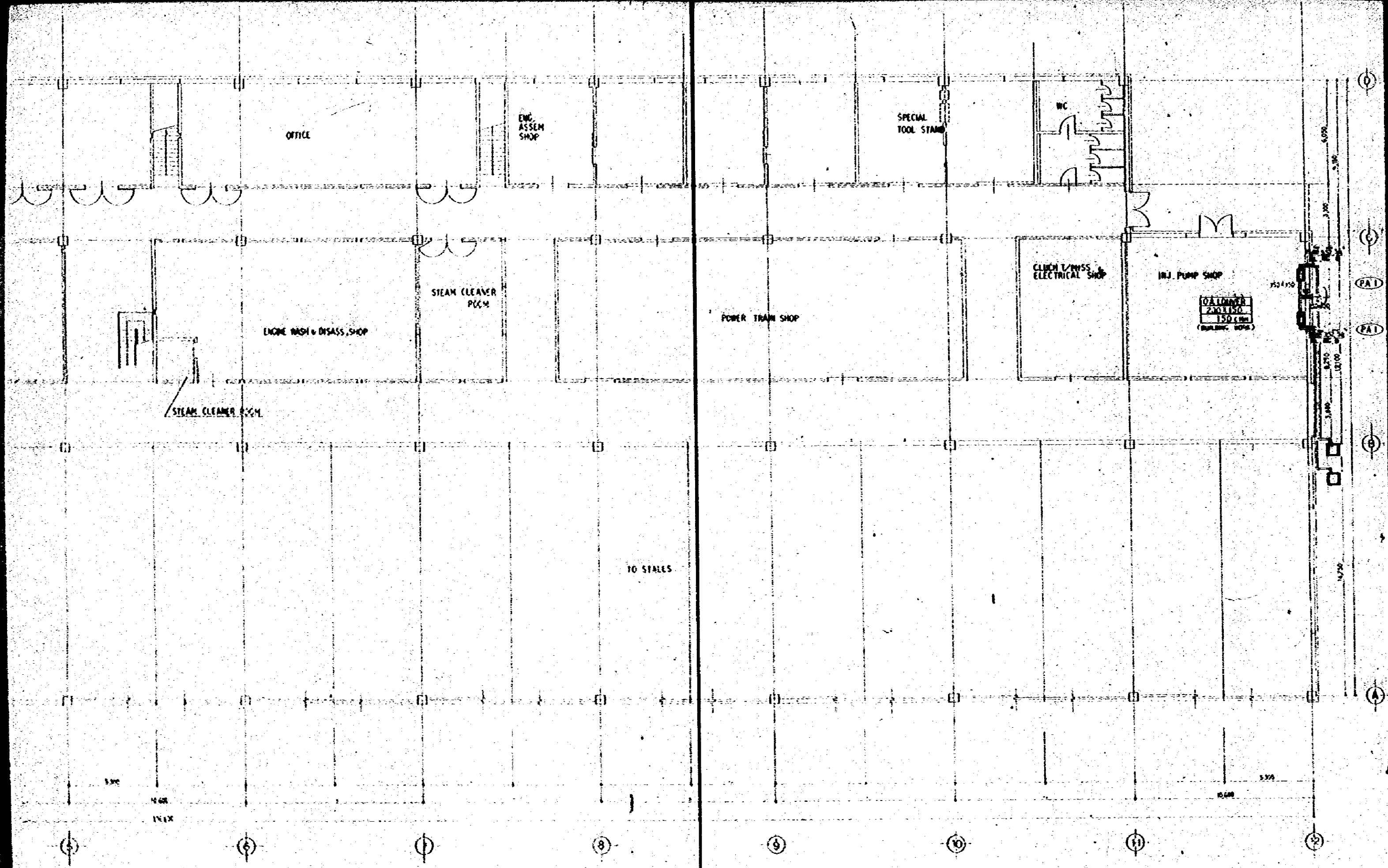


FLOOR PLAN S-1-100
PAINT GREASE & OIL STORAGE



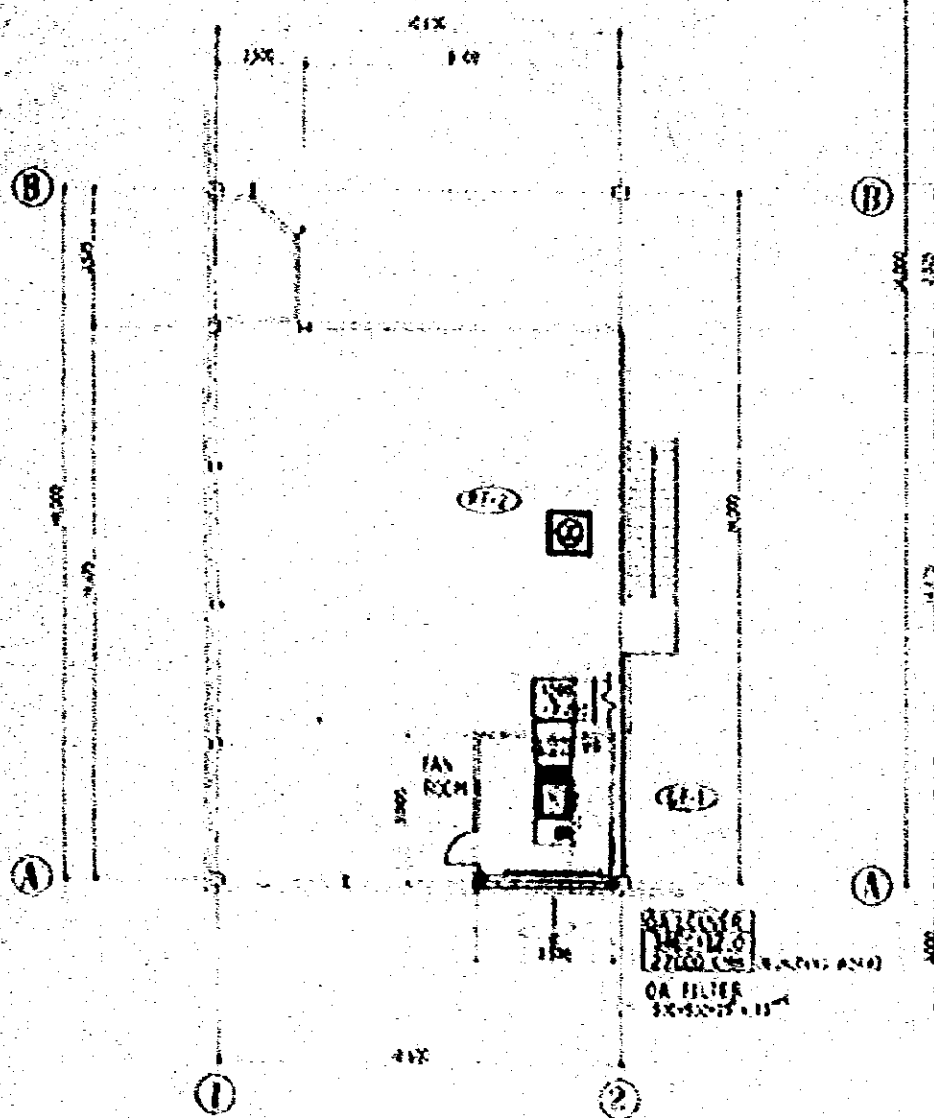
SUB-STATION PLAN S-1-100

CONSTRUCTION PROJECT		10/72
AUTOMOBILE REPAIR & MAINTENANCE WORKSHOP		1:100
TITLE OF DRAWING		C.Y.
COOLING AND VENTILATING		4
GROUND FLOOR PLAN OF CHECK GATE		
JAPAN INTERNATIONAL COOPERATION PROJECT		

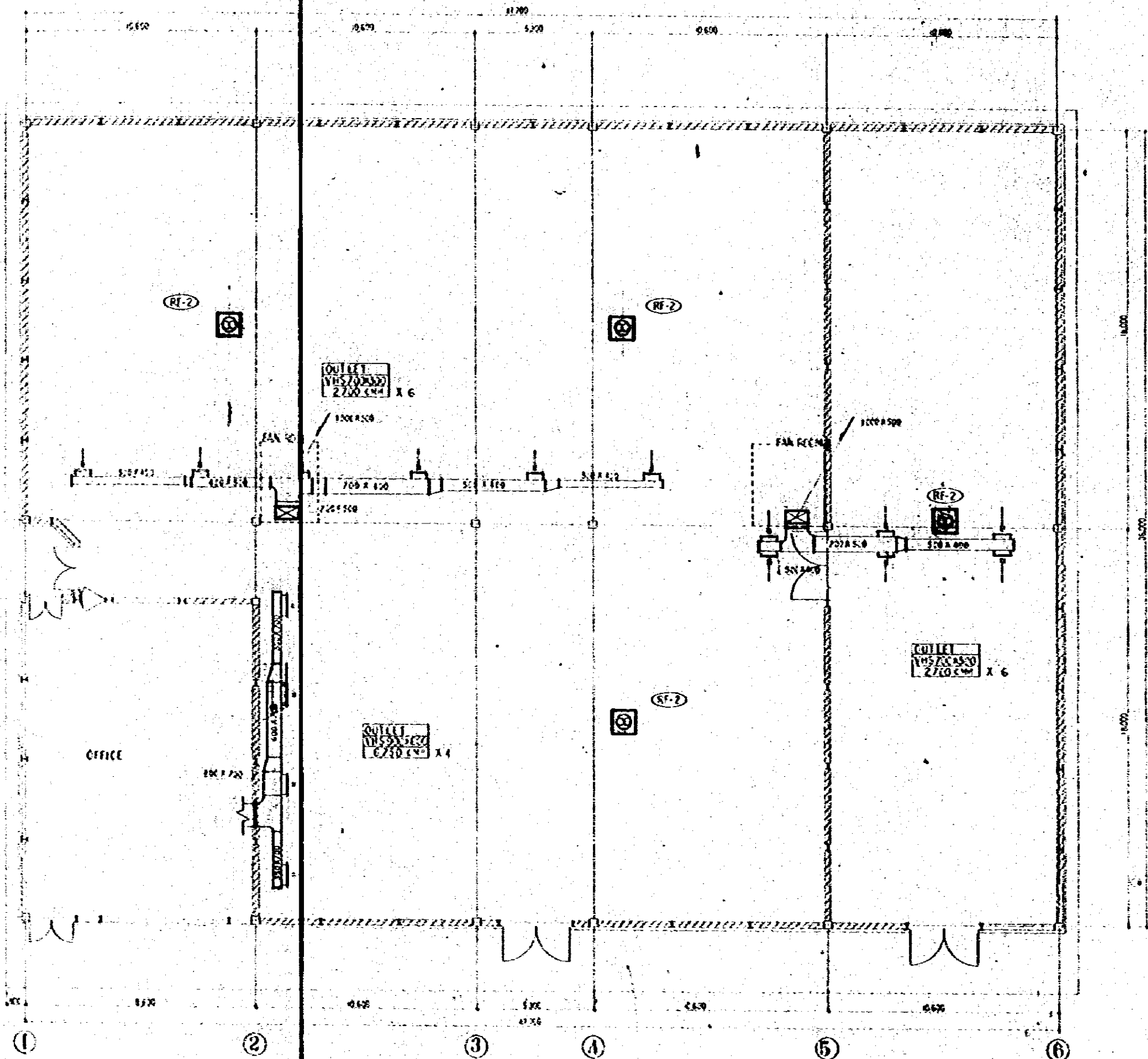


GROUND FLOOR PLAN OF HEAVY REPAIR FACTORY 5:1=100

CONSTRUCTION PROJECT	10/10
USE	1:100
AUTOMOBILE REPAIR & MAINTENANCE WORKSHOP	1:100
IN EXISTENCE	1:100
TITLE OF DRAWING	C/S
COOLING AND VENTILATING	5
GROUND FLOOR PLAN OF HEAVY REPAIR FACTORY	
JAPAN INTERNATIONAL COOPERATION PROJECT	

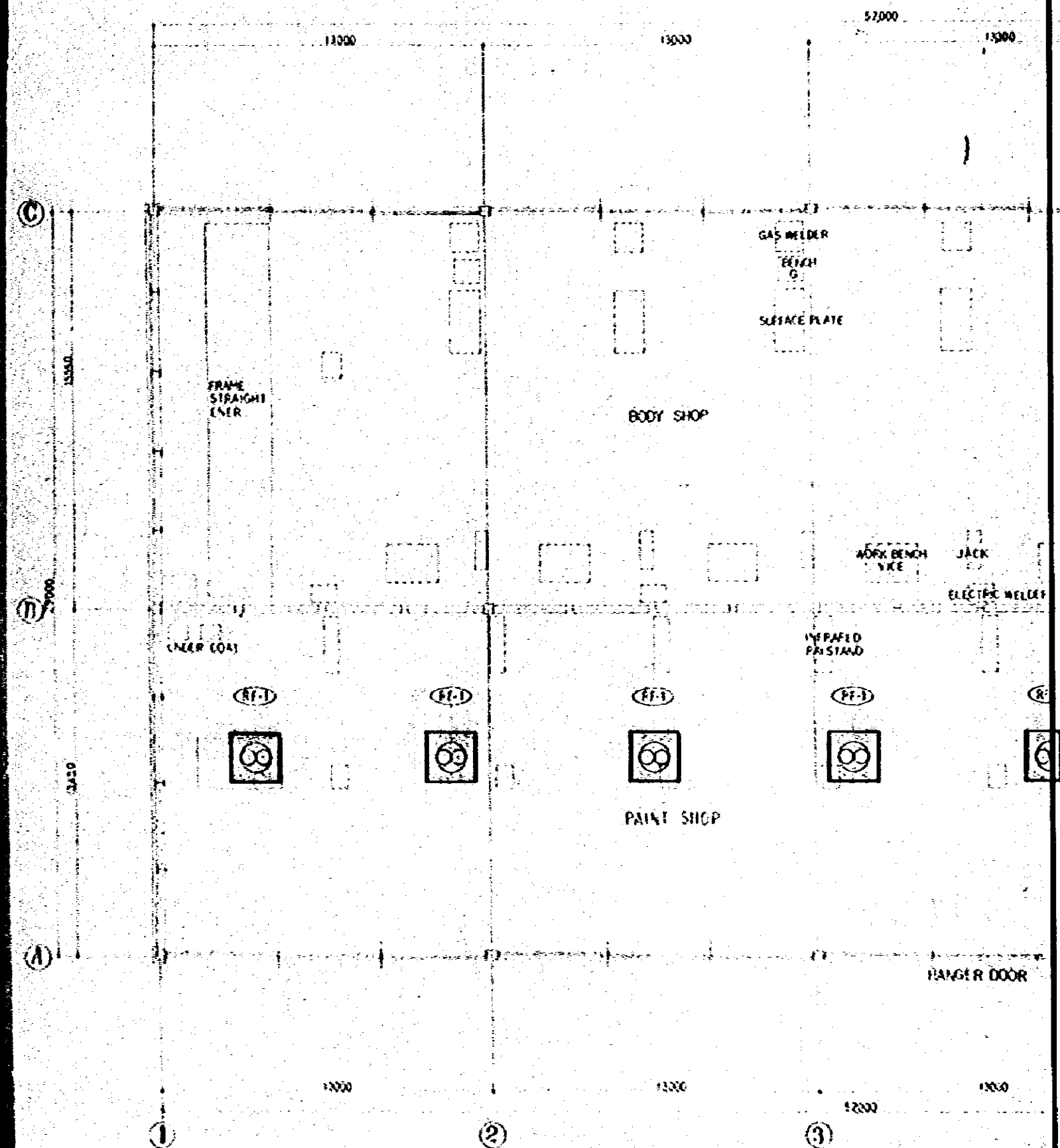


PLAN OF DECK S-1-100

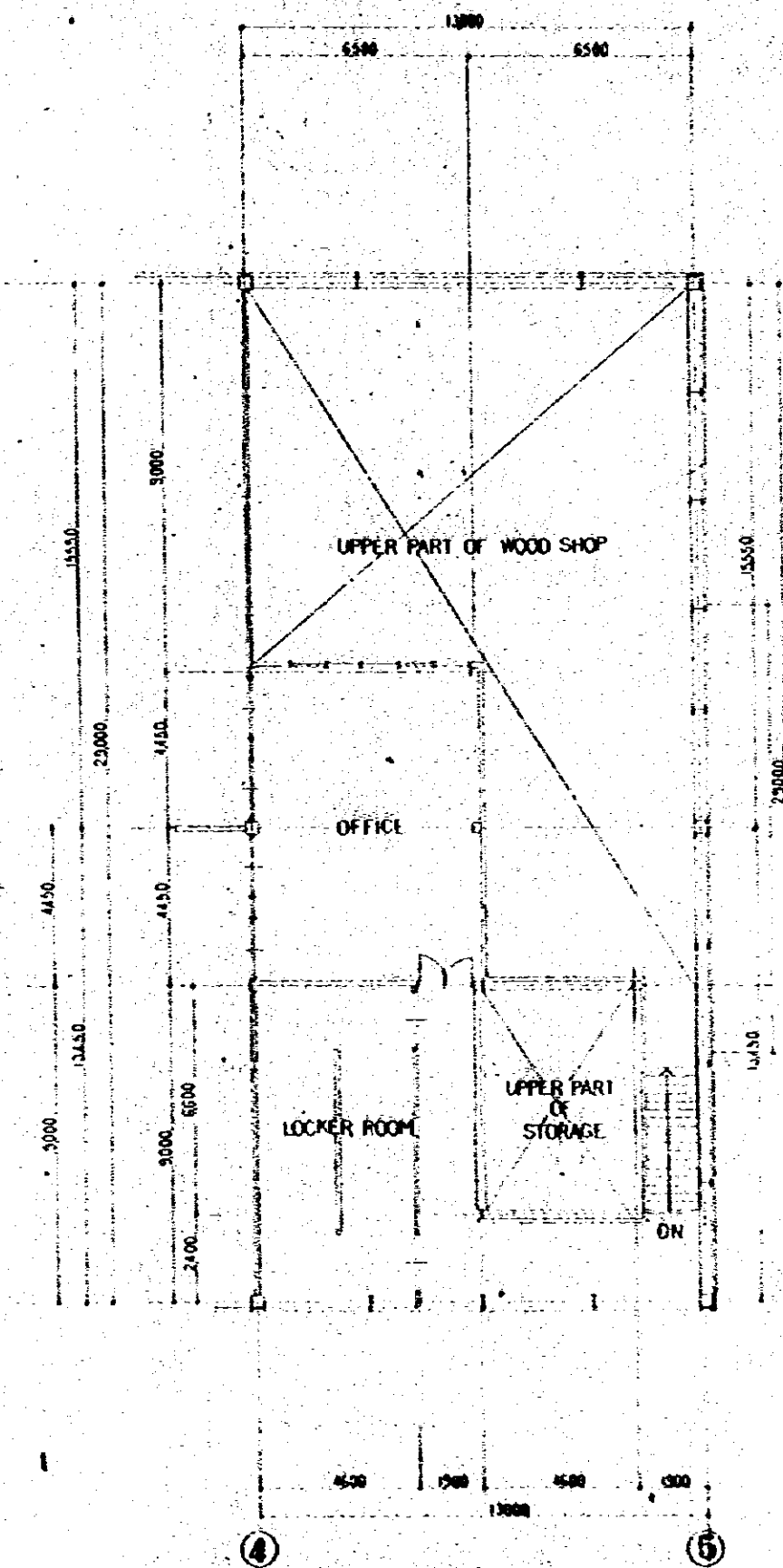
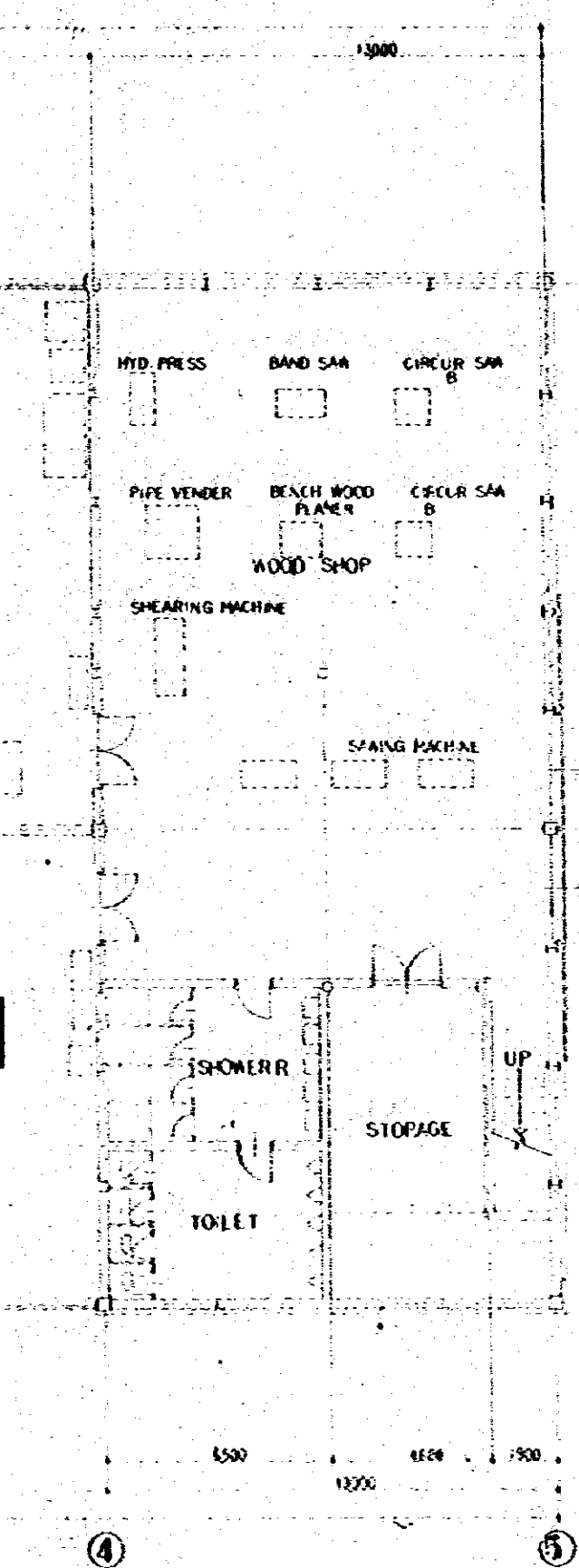


PLAN OF PARTS STORAGE S-1-100

CONSTRUCTION PROJECT	10/78
OF	
AUTOMOBILE REPAIR, MAINTENANCE WORKSHOP	
IN ENGLAND	1-100
TYPE OF BUILDING	OFFICE
COOLING AND VENTILATING	C.Y.
CARWASH FLOOR PLAN & BOCK PLAN OF PARTS	
STORAGE BENCH OF PAIR ROOM	
IN AN INTERNATIONAL COOPERATION PROJECT	



GROUND FLOOR PLAN OF PAINT & BODY FACTORY 5:1=100



1ST FLOOR PLAN OF P&B FACTORY 5:1=100

CONSTRUCTION PROJECT		10/78
AUTOMOBILE REPAIR, MAINTENANCE WORKSHOP		1:100
FILE NO. 10/78		CY
COOLING AND VENTILATING GROUND FLOOR & 1ST FLOOR PLAN OF PAINT & BODY FACTORY		7
JAPAN INTERNATIONAL COOPERATION AGENCY		

PLUMBING FIXTURE SCHEDULE

NAME	MODEL	ACCESSORIES	HEAVY REPAIR FACTORY		PERIODICAL REPAIR FACTORY		P. AND B. FACTORY		REPAIR METAL FACTORY		CHECK GATE		TRAINING ROOM		CAFETERIA		DORMITORY		CLASS ROOM AND OFFICE		GENERAL OFFICE BUILDING		TOTAL
			(E)	(W)	(E)	(W)	(E)	(W)	(E)	(W)	(E)	(W)	(E)	(W)	(E)	(W)	(E)	(W)	(E)	(W)	(E)	(W)	
WESTERN STYLE WATER CLOSET	C 21	1 VISIONAL																					1
EASTERN STYLE WATER CLOSET	C 97	1 15CNLV10, A97	3	3																			3
URINAL	U 23	1 60RN	4	4																			4
WASH BASIN	L 5B	1 20S, 1512EAS, 1225																					1
LAVATORY	L 221	1 20S, 1512EAS, 175	2	2																			2
MIRROR	15119AE-S		2	2																			2
SHELF	S 5		2	2																			2
SHOWER SET (MIXING TYPE)	1M15 CH		1	1																			1
SHOWER SET (WATER ONLY)	16B 19C	1B 27A 3/4"	2	2																			2
SERVICE SINK	SK 22 A	1375N, 123AE 3/4"	1	1																			1
LAUNDRY SINK	SK 501	123A 3/4", 1A1051																					
FAUCET (FOR WATER CLOSET)	F23 B 3/4"		3	3																			3
FAUCET (FOR SINK)	F150AR 3/4"																						
FAUCET (FOR CAFE)	F1200-15"	CONCRETE COLUMN																					
FAUCET (FOR CAFE)	F127-3/4"	EAST IRON BOX																					

* INDICATED MODEL NUMBERS OF "NO TO LTD." ARE ONLY AN EXAMPLE.

EQUIPMENT SCHEDULE

SHEET	NAME	SPECIFICATION	QUANTITY	LOC	BUILDING	ROOM	REMARKS
1-1	WATER TANK	AVAILABLE CAPACITY 85M	1	CH			BUILDING BOSS
1-2	ELEVATED WATER TANK	1000 x 1000 x 3500" F.R.P. PANEL WITH CHANNEL IRON BASE	1	CH	WATER SUPPLY TOWER (H=31.8M)		PHASE I
B-1	INSTANTANEOUS HOT WATER HEATER	WELL PUMP TYPE 140 STAGE	1	3"	HEAVY REPAIR SHOP	EAST TOILET	TOILET BUILDING BOSS
CT-1	COOLING TOWER	WATER 210 5/8" x 50" C/40" C (15/24) WET BULB OF ATMOSPHERE 33.5°C	1	3"	AIR COMPRESSOR HOUSE	ROOF	ELECTRIC HEATER
F-1	WATER RAISING PUMP	100" x 950 5/8" x 41/2"	2	3"			FOR AIR COMPRESSOR
F-2	WELL PUMP	100" x 850 5/8" x 35/32"	1	3"			ALTERNATING OPERATION
F-3	DRAINAGE PUMP	50" x 250 5/8" x 61/2"	1	3"			ALTERNATING OPERATION
F-4	COOLING WATER PUMP	50" x 240 5/8" x 1 1/2"	1	3"			PHASE I
F-5	DRAINAGE PUMP	50" x 250 5/8" x 1 1/2"	2	3"			ALTERNATING OPERATION
GT-1	OIL STORAGE TANK	AVAILABLE CAPACITY 15500 L	1	1"			FOR "C" HEAVY OIL
OT-1	OIL CAY TANK	750 x 750 x 850" WITH STEAM HEATER AND FLOAT SWITCH	1	1"			PHASE I
OT-2	OIL CAY TANK	500 x 500 x 650"	1	1"			PHASE I
GP-1	OIL CLEAR PUMP	15" x 10 5/8" x 3 1/2"	1	3"			PHASE I
FE-1	FIRE EXTINGUISHER	CO-100M OAT CHEMICAL TYPE (SODIUM BI-CARBONATE BASE)	5	3"			PHASE I

LEGEND

SYMBOL	NAME	DESCRIPTION	REMARKS	SYMBOL	NAME	DESCRIPTION	REMARKS	NOTES
—	DOMESTIC WATER PIPING	P.V.C. INSIDE COATED STEEL PIPE	OUTSIDE GALVANIZED	FAUCET				FOR LEGEND OF COMPRESSED AIR PIPING, SEE ENCL. NO P-15
—	DOMESTIC HOT WATER PIPING	COPPER PIPE		SHOWER				2" RETEERING AND METAL CASTING FACTORY AND PAINT AND BOG
—	WASTE AND SOIL PIPING	P.V.C. PIPE		FLUSH				FACTORY SHALL BE BUILT IN PHASE I.
—	WASTE AND SOIL PIPING	CALVANIZED STEEL PIPE		FLOOR				PERIODICAL REPAIR FACTORY AND INSPECTION FACTORY
—	AIR VENT PIPING	P.V.C. PIPE		SINK				SHALL BE BUILT IN PHASE I.
—	COMPRESSED AIR PIPING	CALVANIZED STEEL PIPE		CLEAN				AND THE REST SHALL BE BUILT IN PHASE I.
—	COOLING WATER SUPPLY PIPING	CHITTO		CLEAN				
—	COOLING WATER RETURN PIPING	CHITTO		SOIL				
—	ENGINE EXHAUST PIPING	CALVANIZED STEEL PIPE		WASTE				
—	GATE VALVE, STOP VALVE			WASTE				
—	EXTENSION JOINT			VALVE				
—	CHECK VALVE			VENT				
—	FLEXIBLE JOINT			STEAM				
—	CARBON FAUCET	WITH CAST IRON BOX						
—	CARBON FAUCET	WITH CAST IRON BOX (HEAVY DUTY TYPE)						
—	HOT WATER SUPPLY PIPING	CALVANIZED STEEL PIPE						
—	HOT WATER RETURN	CHITTO						
—	STEAM SUPPLY PIPING	STEEL PIPE (BLACK)						
—	CONDENSATE PIPING	CHITTO						

10/19

LEGEND OF COMPRESSED AIR PIPING, SEE ENCL. NO P-15

2" RETEERING AND METAL CASTING FACTORY AND PAINT AND BOG

FACTORY SHALL BE BUILT IN PHASE I.

PERIODICAL REPAIR FACTORY AND INSPECTION FACTORY

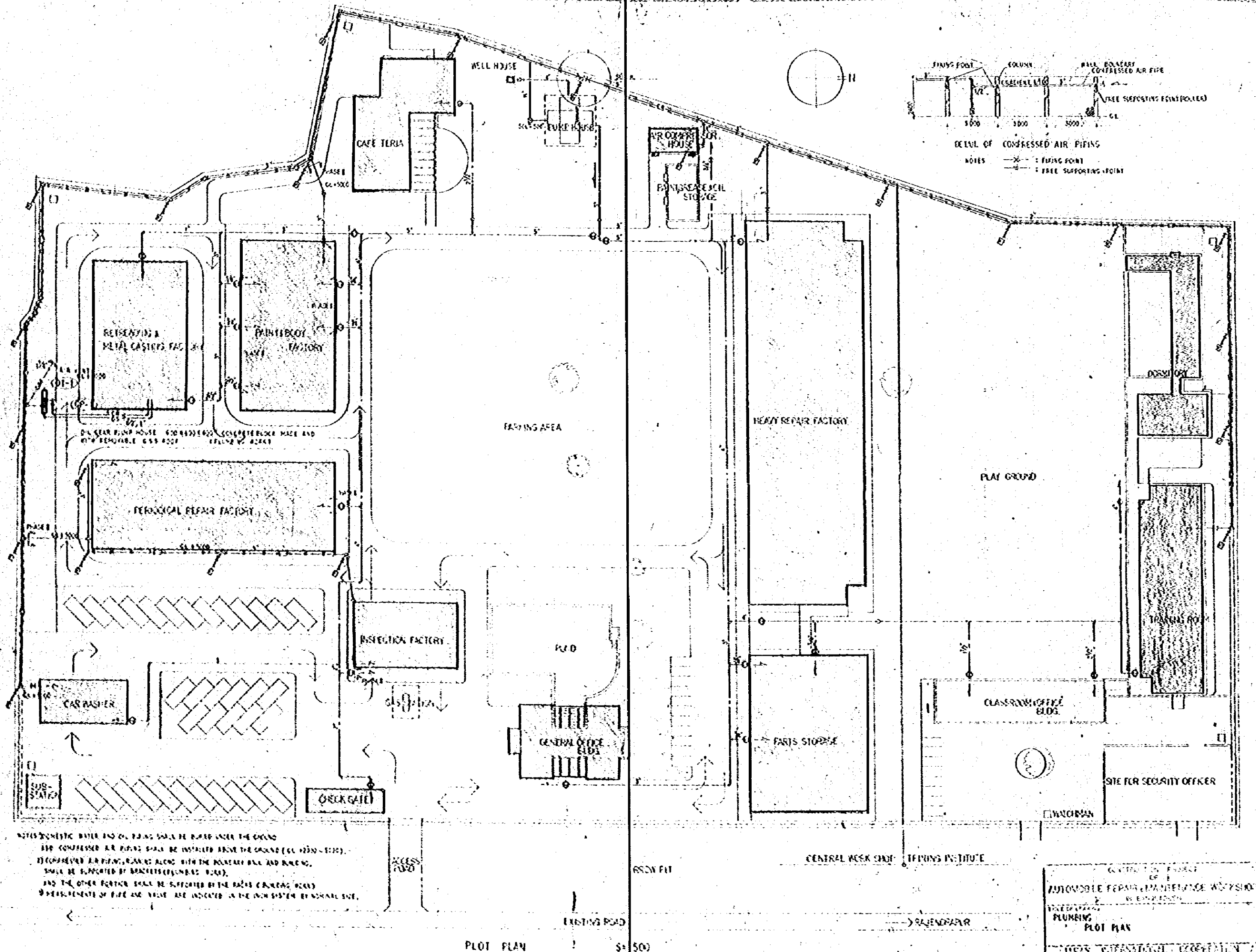
SHALL BE BUILT IN PHASE I.

AND THE REST SHALL BE BUILT IN PHASE I.

PLUMBING

PLUMBING FIXTURE SCHEDULE

PLUMBING SCHEDULE AND LEGEND



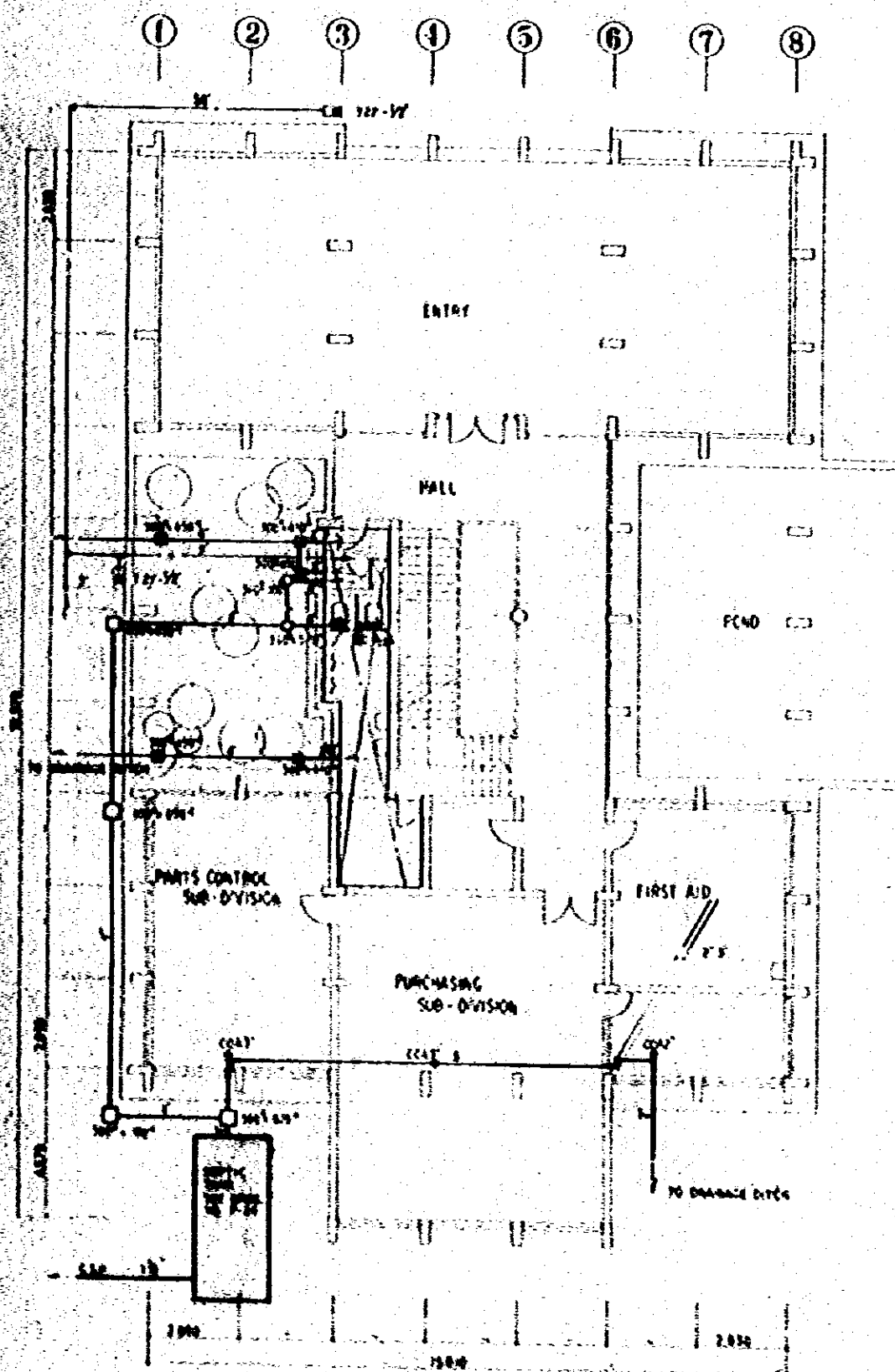
NOTES: COMPRESSED AIR PIPING SHALL BE LAYED UNDER THE GROUND
THE COMPRESSED AIR PIPING SHALL BE INSTALLED ABOVE THE GROUND (CL. 1000 - 1100).
THE COMPRESSED AIR PIPING, RUNNING ALONG WITH THE MAINLINE PIPING AND RACING,
SHALL BE SUPPORTED BY BRACKET (CONCRETE OR STEEL).
AND THE OTHER PORTION SHALL BE SUPPORTED BY THE EXISTING CONCRETE PILES.
A MECHANISM OF PIPE AND VALVE ARE INSTALLED IN THE MAIN SYSTEM OF MAINLINE PIPE.

PLOT PLAN

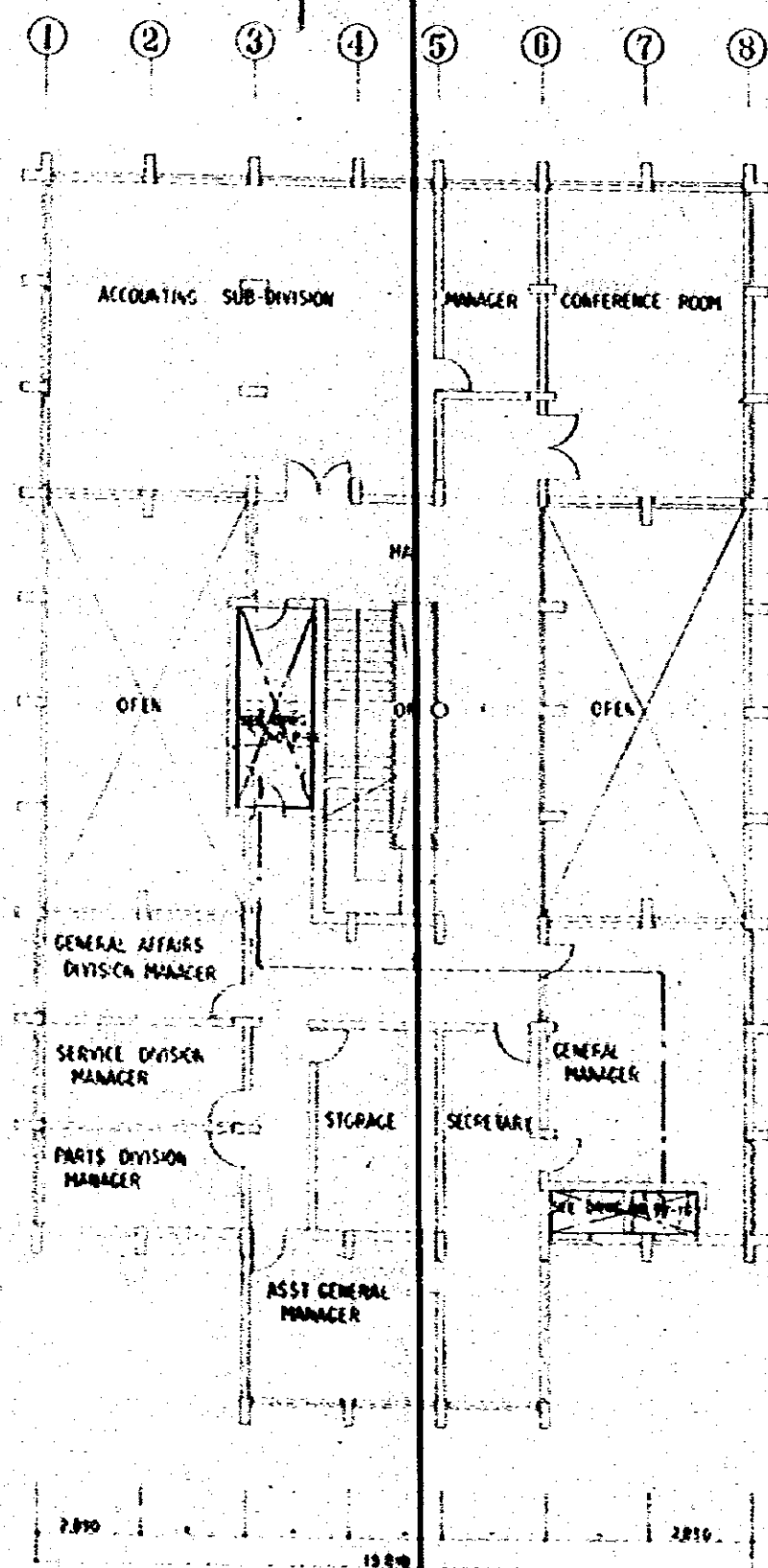
1:500

CENTRAL WORK SHOP - TERNING INSTITUTE

10/78
1:500
2
2

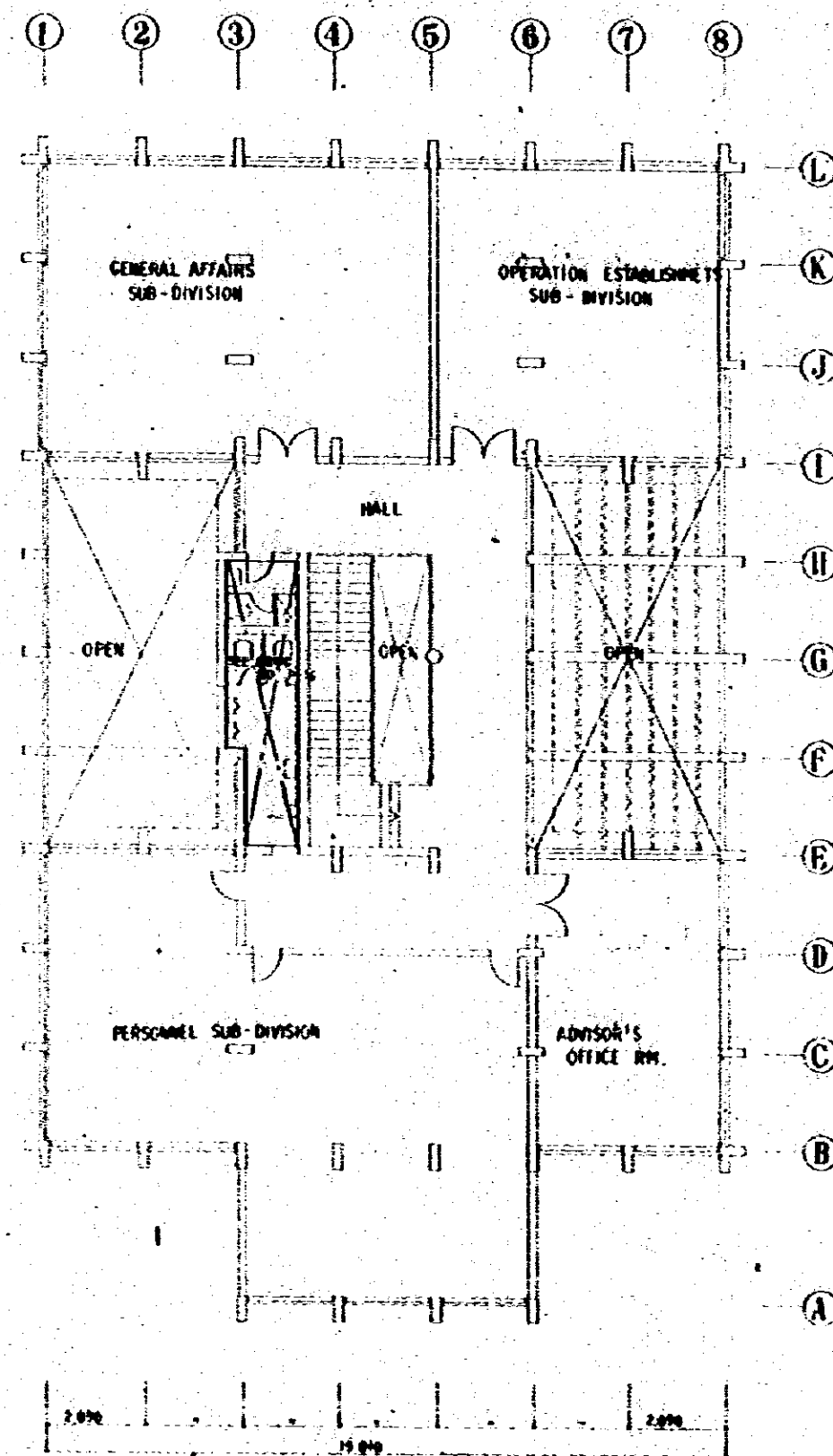


GROUND FLOOR PLAN S-1-100



1ST. FLOOR PLAN S-1-100

GENERAL OFFICE BUILDING



2ND. FLOOR PLAN S-1-100

CONSTRUCTION PROJECT		10/78
AUTOMOBILE REPAIR & MAINTENANCE WORKSHOP		1:100
PLANNING		2/3
GROUND FLOOR, 1ST FLOOR & 2ND FLOOR PLAN OF GENERAL OFFICE BUILDING.		
JAPAN INTERNATIONAL COOPERATION AGENCY		