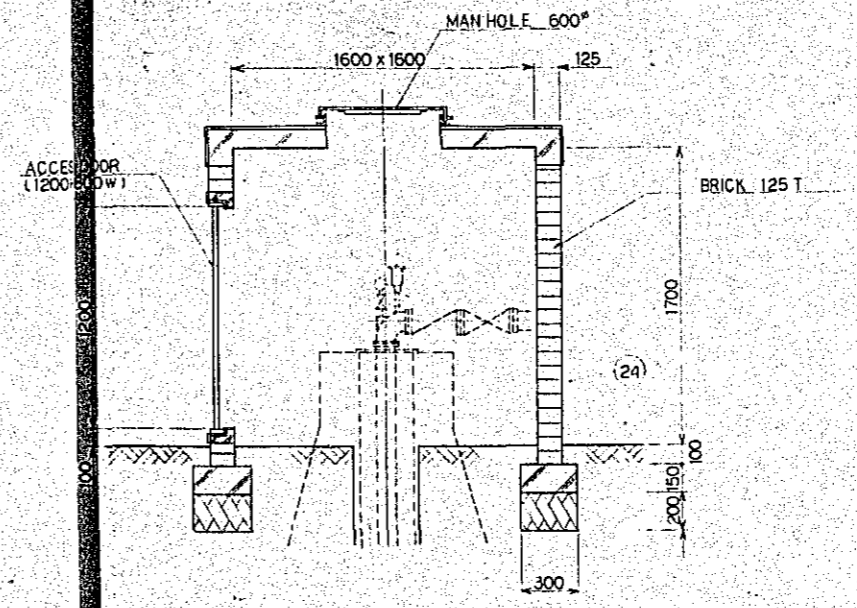
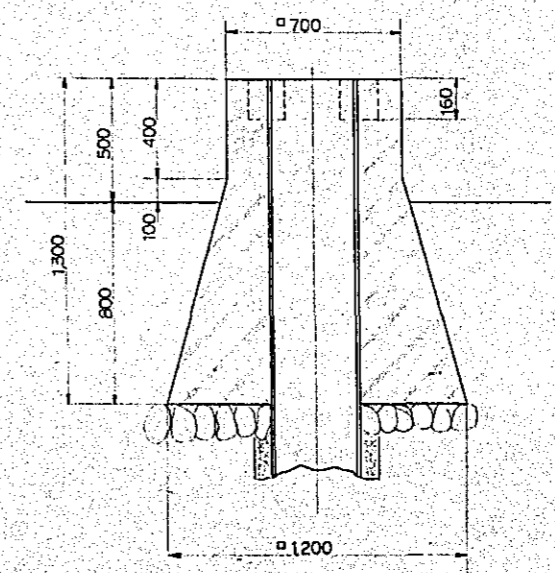
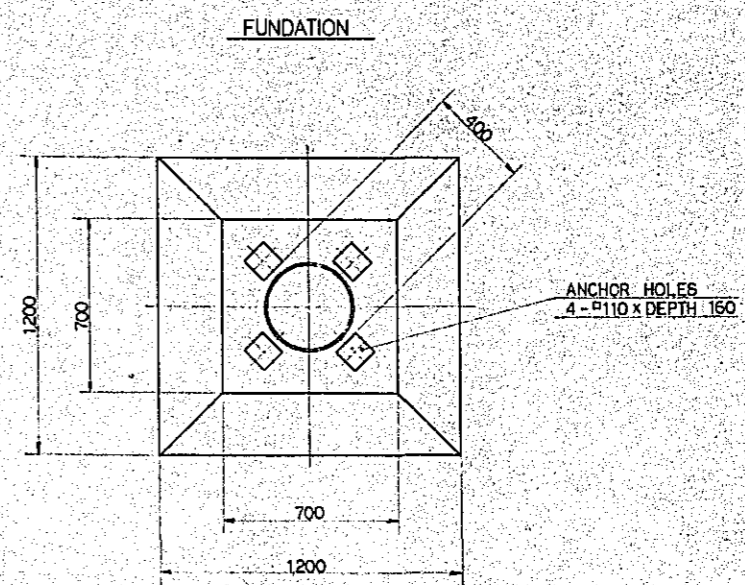
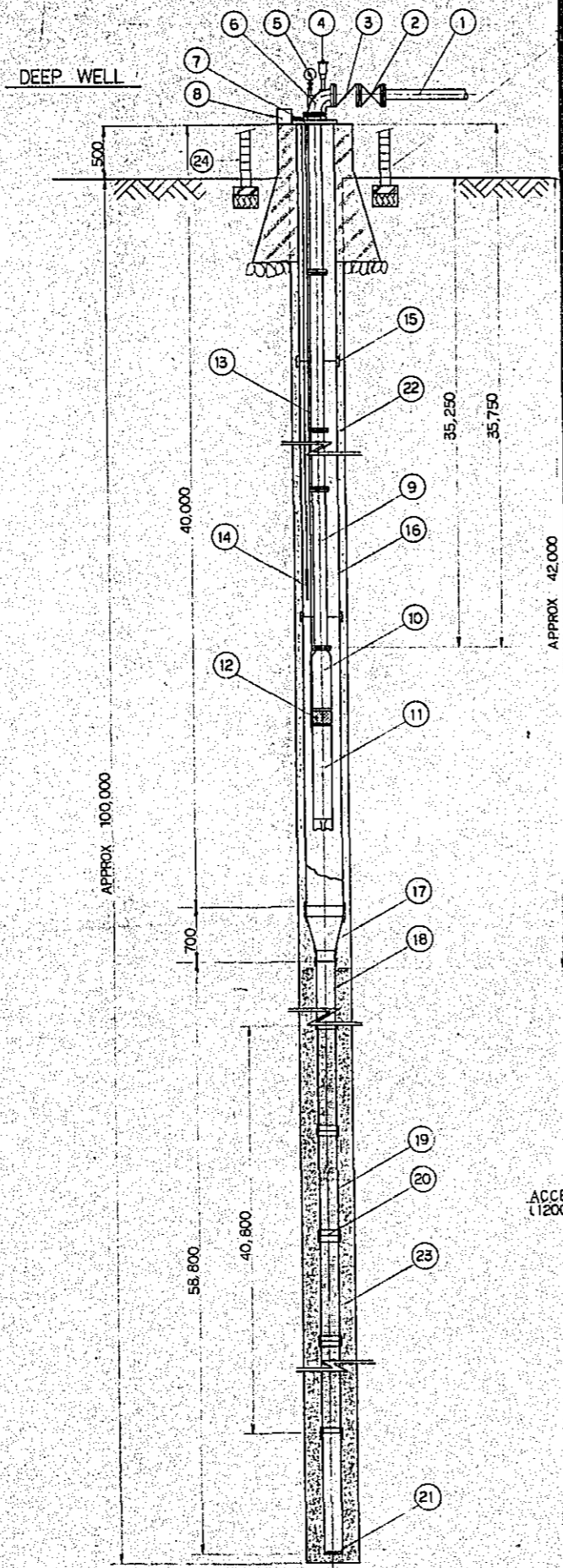
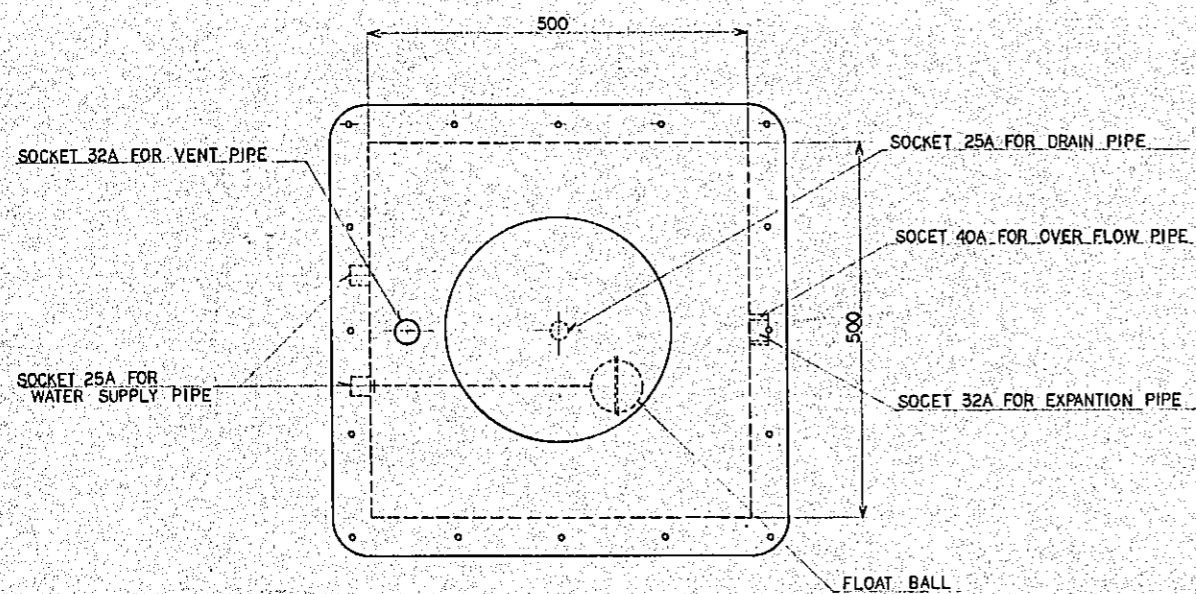
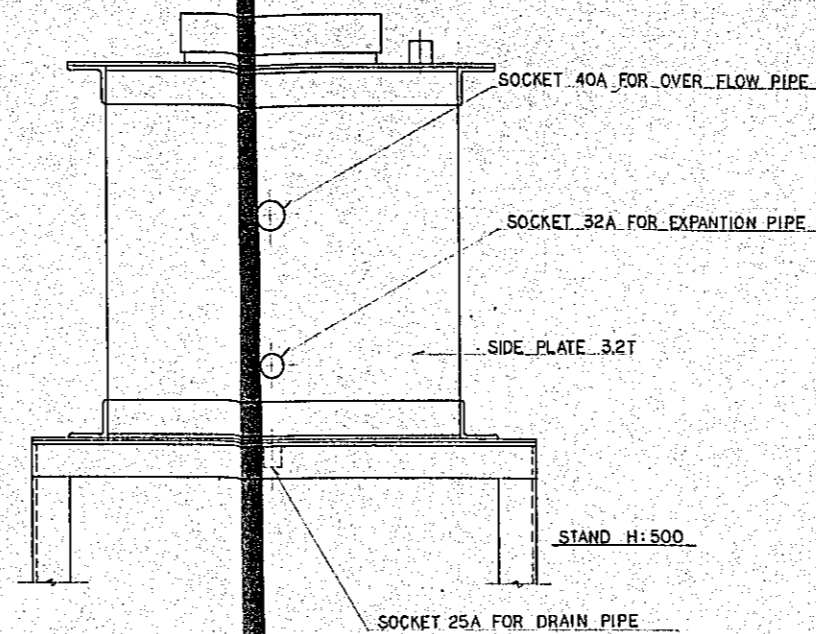
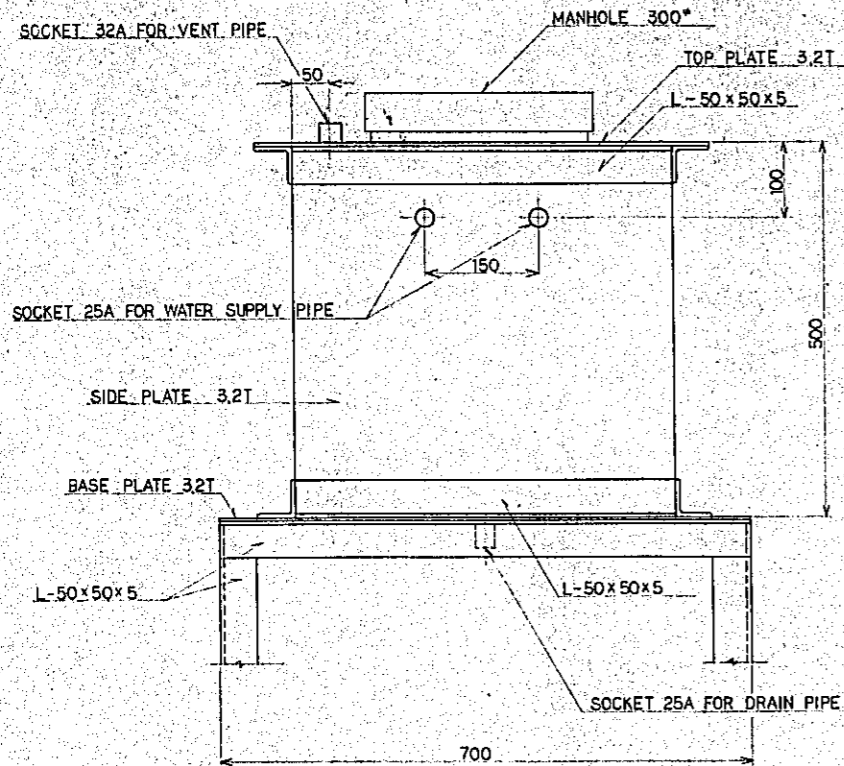


1	WATER PIPE
2	SLUICE VALVE
3	CHECK VALVE
4	AUTOMATIC AIR VALVE
5	COMPOUND GAUGE
6	VEND PIPE
7	SURFACE PLATE
8	JUNCTION BOX 100x100x100
9	COLUMN PIPE
10	SUBMERSIBLE PUMP
11	SUBMERSIBLE MOTOR
12	STRAINER OF SUBMERSIBLE PUMP
13	SUBMERSIBLE CABLE (POWER CABLE)
14	ELECTRODE
15	PATCH
16	14" NOMINAL DIA CASING
17	REDUCING CONE
18	6" NOMINAL DIA CASING
19	6" JOHNSON STAINLESS STEEL SCREEN V WIRE TYPE
20	WELDING RING FOR SCREEN
21	WELL BOTTOM
22	CLAY
23	PACKING GRAVEL
24	DEEP WELL HOUSE



DEEP WELL HOUSE 1/20

Project	NATIONAL BROADCASTING HOUSE OF RADIO BANGLADESH	No.	M-22
Scale			1/20
Approved by	Designed by	Drawn by	Date
			FEB 1961
JEC JAPAN ENGINEERING CONSULTANTS CO., LTD.			

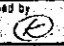



EXPANTION TANK 1/5

Project	NATIONAL BROADCASTING HOUSE OF RADIO BANGLADESH	No	M-23
		Scale	1/5
MISCELLANEOUS DETAIL (EXPANTION TANK)			
Approved by	Designed by	Drawn by	Date
<i>[Signature]</i>	<i>[Signature]</i>	<i>[Signature]</i>	FEB 1981
JECB JAPAN ENGINEERING CONSULTANTS CO., LTD.			

LIST OF DRAWINGS FOR PLUMBING

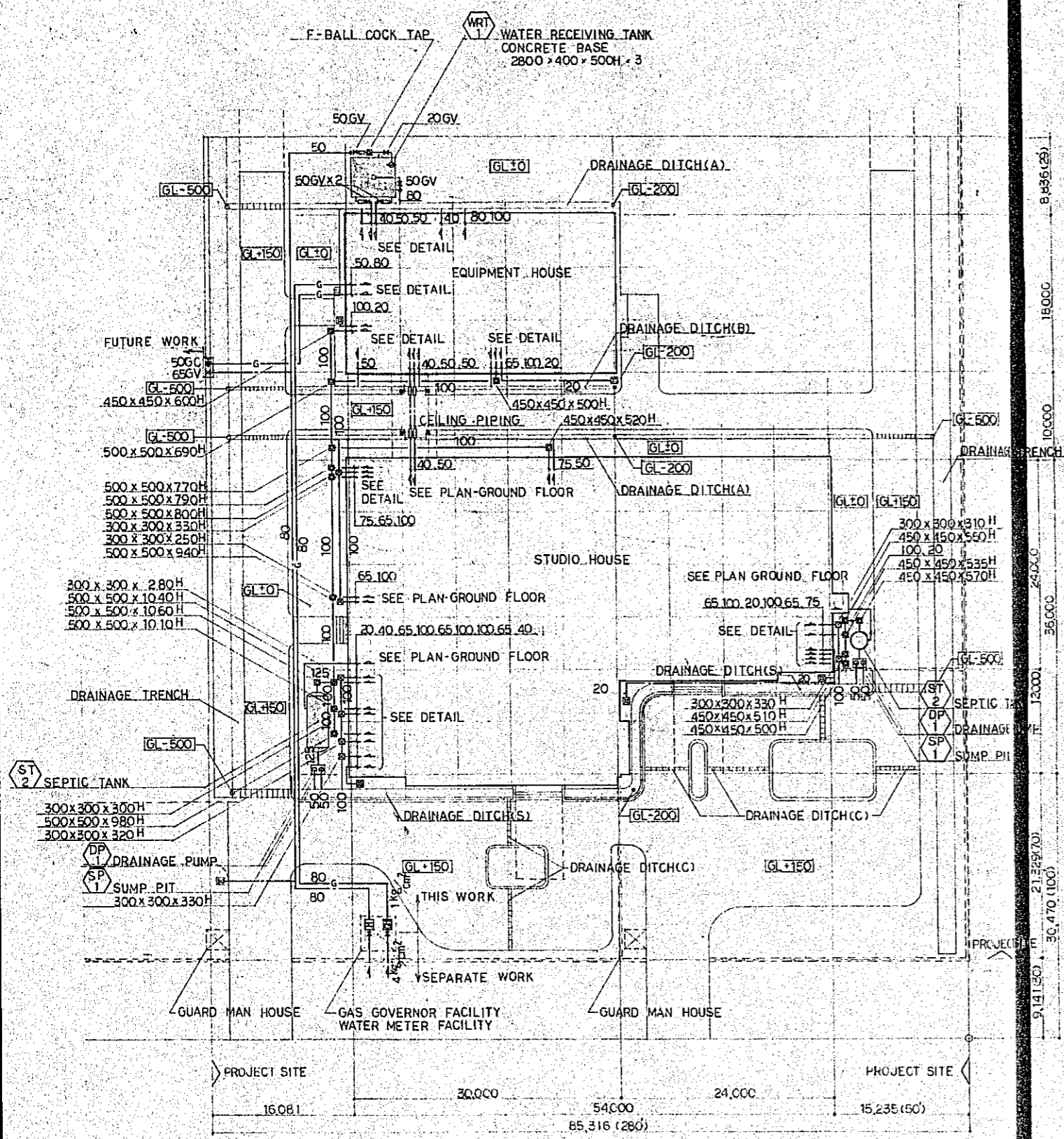
DRGS NO.	TITLE OF DRAWINGS	SCALE	DRGS NO.	TITLE OF DRAWINGS	SCALE
P-1	LIST OF DRAWINGS FOR PLUMBING		P-11	DETAIL OF WC. AND SHOWER ROOM	1/50
P-2	LIST OF EQUIPMENT AND IMPLEMENT		P-12	DETAIL OF WC, KITCHENETTE, MACHINE ROOM AND H.T. ROOM	1/50
P-3	FLOW DIAGRAM OF PIPING		P-13	DETAIL OF IMPLEMENT	1/10
P-4	SITE PLAN AND EXPLANATION OF SYMBOLS	1/10	P-14	D.O.	1/10
P-5	PLAN — GROUND FLOOR	1/10	P-15	DETAIL OF SEPTIC TANK	1/20, 1/30
P-6	PLAN — FIRST FLOOR	1/10	P-16	DETAIL OF WATER RECEIVING TANK AND ELEVATED STORAGE TANK	1/30
P-7	PLAN — SECOND FLOOR	1/10	P-17	DETAIL OF ELECTRIC WATER HEATER AND WATER TANK	1/5, 1/10
P-8	PLAN — ROOF FLOOR	1/10			
P-9	PLAN — ANNEX	1/10			
P-10	DETAIL OF WC.	1/10			

Project	NATIONAL BROADCASTING HOUSE OF RADIO BANGLADESH	No.	P-1
	LIST OF DRAWINGS FOR PLUMBING	Scale	
Approved by	Designed by	Drawn by	Date
		M.O.	FEB 1961
JEC JAPAN ENGINEERING CONSULTANTS CO., LTD.			

LIST OF EQUIPMENT				Q'TY	PHASE	VOLT	KW	REMARKS
P-1	WRT-1	WATER RECEIVING TANK	SECTIONAL PANEL TANK TYPE CAPACITY: 15 m <sup>3</sup> MATERIAL: FIBER GLASS REINFORCED PLASTIC DIMENSION: 3000 x 2500 x 2000H	1		415		
P-2	EST-1	ELEVATED STORAGE TANK	SECTIONAL PANEL TANK TYPE CAPACITY: 10 m <sup>3</sup> MATERIAL: FIBER GLASS REINFORCED PLASTIC DIMENSION: 2000 x 2500 x 2000H	1				
P-3	ST-1	SEPTIC TANK	AERATION SYSTEM TYPE CAPACITY: 200 PERSONS MATERIAL: FIBER GLASS REINFORCED PLASTIC DIMENSION: 2450 <sup>φ</sup> x 3400 <sup>D</sup>	1	3	415	0.4	INCLUDING 2 AERATORS (ALTERNATIVE OPERATION)
P-4	ST-2	DO	AERATION SYSTEM TYPE CAPACITY: 400 PERSONS MATERIAL: FIBER GLASS REINFORCED PLASTIC DIMENSION: 6700 <sup>L</sup> x 2420 <sup>W</sup> x 3000 <sup>D</sup>	1	3	415	1.5	INCLUDING 2 AERATORS (ALTERNATIVE OPERATION)
P-5	SP-1	SUMP PIT	UNDERGROUND TYPE CAPACITY: 1 m <sup>3</sup> MATERIAL: BRICK DIMENSION: 1340 x 1340 x 2170 D	2				
P-6	WT-1	WATER TANK	CAPACITY: 350 <sup>L</sup> MATERIAL: STEEL PLATE DIMENSION: 750 x 750 x 750 H	1				WITH STAND H-2500 mm
P-7	WP-1	LIFT PUMP	MULTI-STAGE SECTIONAL CASE VOLUTE PUMP x 190 L/M x 35 mAq	2	3	415	3.7	ALTERNATIVE OPERATION
P-8	DP-1	DRAINAGE PUMP	SUBMERSIBLE SEWAGE PUMP (VORTEX TYPE) x 100 L/M x 5 mAq	4	3	415	0.75	ALTERNATIVE OPERATION
P-9	CDP-2	COOLING WATER PUMP	WATER PIT SUBMERSIBLE PUMP x 120 L/M x 5 mAq	1	3	415	0.4	
P-10	EH-1	ELECTRIC WATER HEATER	HEATING CAPACITY: 8600 kcal/h	1	3	415	10.0	

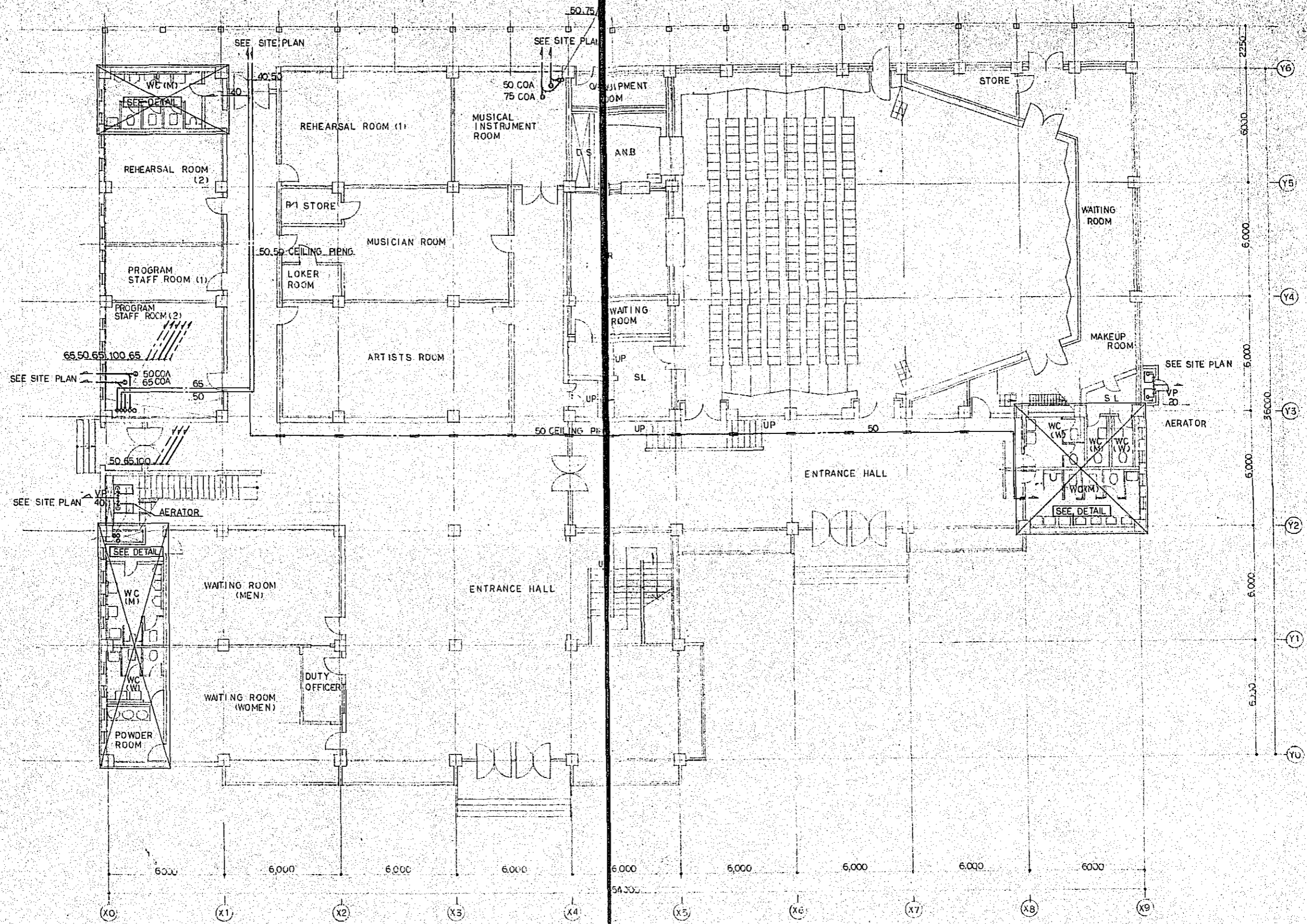
LIST OF IMPLEMENT		STUDIO HOUSE										EQUIPMENT HOUSE			OUT SITE				TOTAL			
ITEMS	TYPE	GROUND FLOOR								FIRST FLOOR		SECOND FLOOR			GROUND FLOOR							
		WC (M) (GF-3)	WC (W) (GF-3)	POWDER ROOM 3	WC (M) (GF-2)	WC (W) (GF-2)	WC (M) (GF-2)	WC (W) (GF-2)	WC (M) (GF-2)	WC (W) (GF-2)	WC (M)	WC (W)	WC (M)	WC (W)	WC (M)	WC (W)	WC (M)					
WESTERN WATER CLOSET	C 21		1		1	1	1	1	1												11	
LOW TANK	S 31		1		1	1	1	1	1												11	
EASTERN WATER CLOSET	C 97	1	1		2	1			2					1		1					17	
LOW TANK	S 570	1	1		2	1			2					1		1					17	
URINAL	U 23 (FV)													1		2					3	
DO	U 37 (FV)				3				4					1							18	
SLOP SINK	SK 22A	1	1		1				1							1					9	
LAVATORY	L 220D	2	2		2	2	1	1	3	2	3			1		1					25	
DO	L 230													1							1	
DO	L 507				3				3												3	
MIRROR	TS 119AS-5	2	2	3	2	2	1	1	3	2	3			1		1		1			29	
SHOWER SET	TB 18R															1					1	
GARDEN HOSE VALVE	T 26-13 (with Artificial stone finished Post)				4	2	1	1	4	3	4			1		1		2	5		5	
WALL FAUCET	T 23B13	2	2		4	2	1	1	4												24	
SWING FAUCET	T 30AR 13																				1	
FLOOR PAN	PF 160N																				1	
SHOWER SET	TBB 10E																				1	





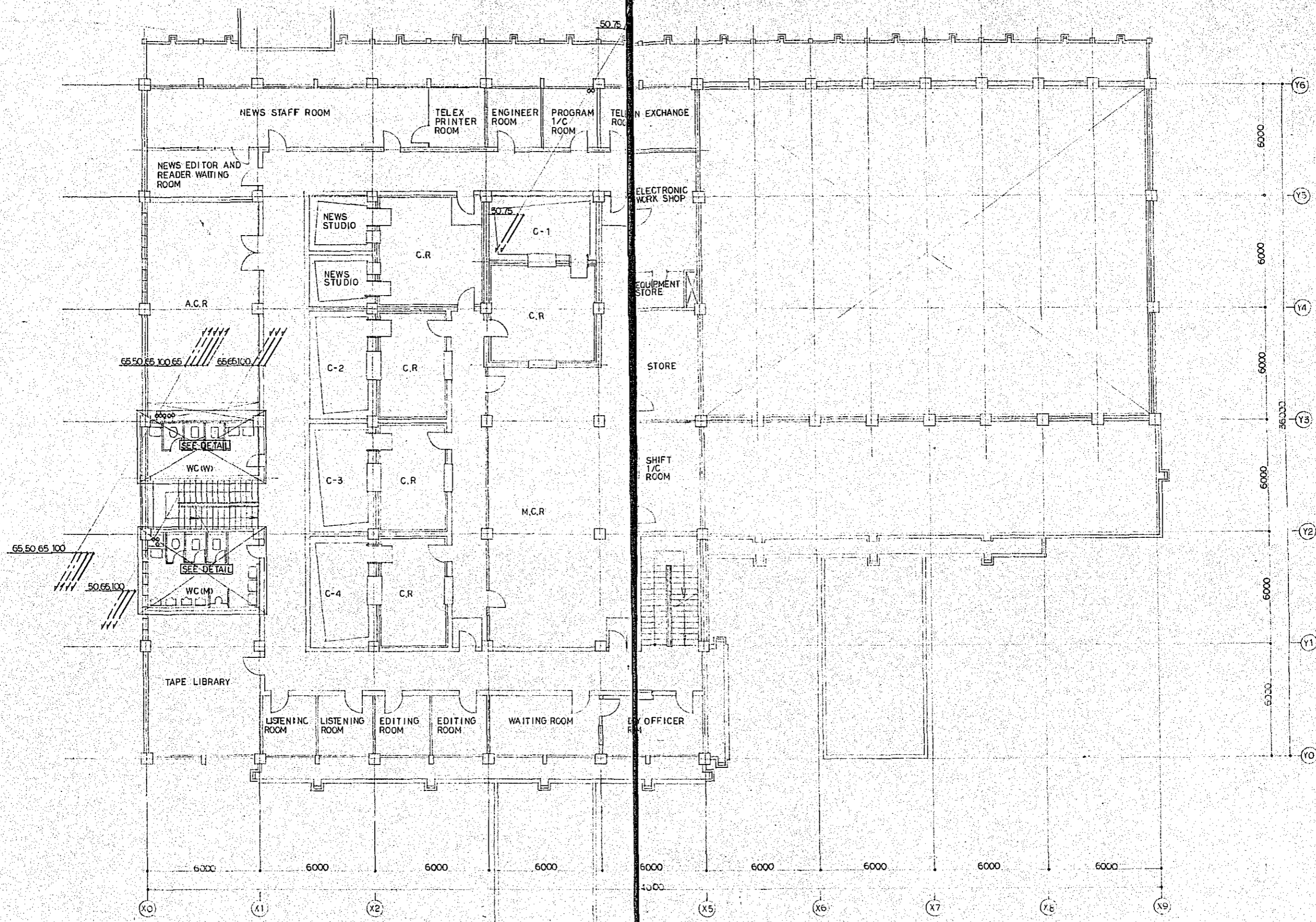
SITE PLAN S-1/300

EXPLANATION SYMBOLS FOR PLUMBING		
SYMBOLS	ITEMS	REMARKS
—	WATER PIPE	GALVANIZED STEEL PIPE FOR WATER SERVICE
—G—	GAS LINE PIPE	GALVANIZED STEEL PIPE
—	DRAIN PIPE	POLYVINYL-CHLORIDE PIPE
—LP—	DO	LEAD PIPE
---	VENT PIPE	POLYVINYL-CHLORIDE PIPE
—GV—	GATE VALVE	JIS 10 K <sub>S</sub> /cm <sup>2</sup>
—CV—	CHECK VALVE	DO
⊕	FAUCET	
⊙	FLUSH VALVE	
⊞	GARDEN HOSE VALVE	WITH VALVE BOX
⊕	BALL TAP	
—	FLEXIBLE JOINT	
—M—	WATER METER	WITH METER PIT
—GC—	GAS COCK	
⊕	GAS FAUCET	SINGLE OUTLETS
⊞	PRESSURE REDUCING VALVE	
—GM—	GAS METER	WITH METER BOX
⊕	FLOOR DRAIN WITH TRAP	T5 TYPE
⊕	SINK DRAIN WITH TRAP	T14 TYPE
⊕	CLEAN OUT	
⊕	U TRAP	
⊕	INDIRECT DRAIN	
⊕	VENT CAP	
⊕	SOIL PIT	
⊕	GENERAL DRAIN PIT	
—CV—	CHECK VALVE	ABSORBENT OF CONCUSSION TYPE
—	FLEXIBLE JOINT	SILENCER TYPE
—SV—	STOP VALVE FOR GAS LINE	
—	VALVE PIT	



PLAN - GROUND FLOOR S-1/100

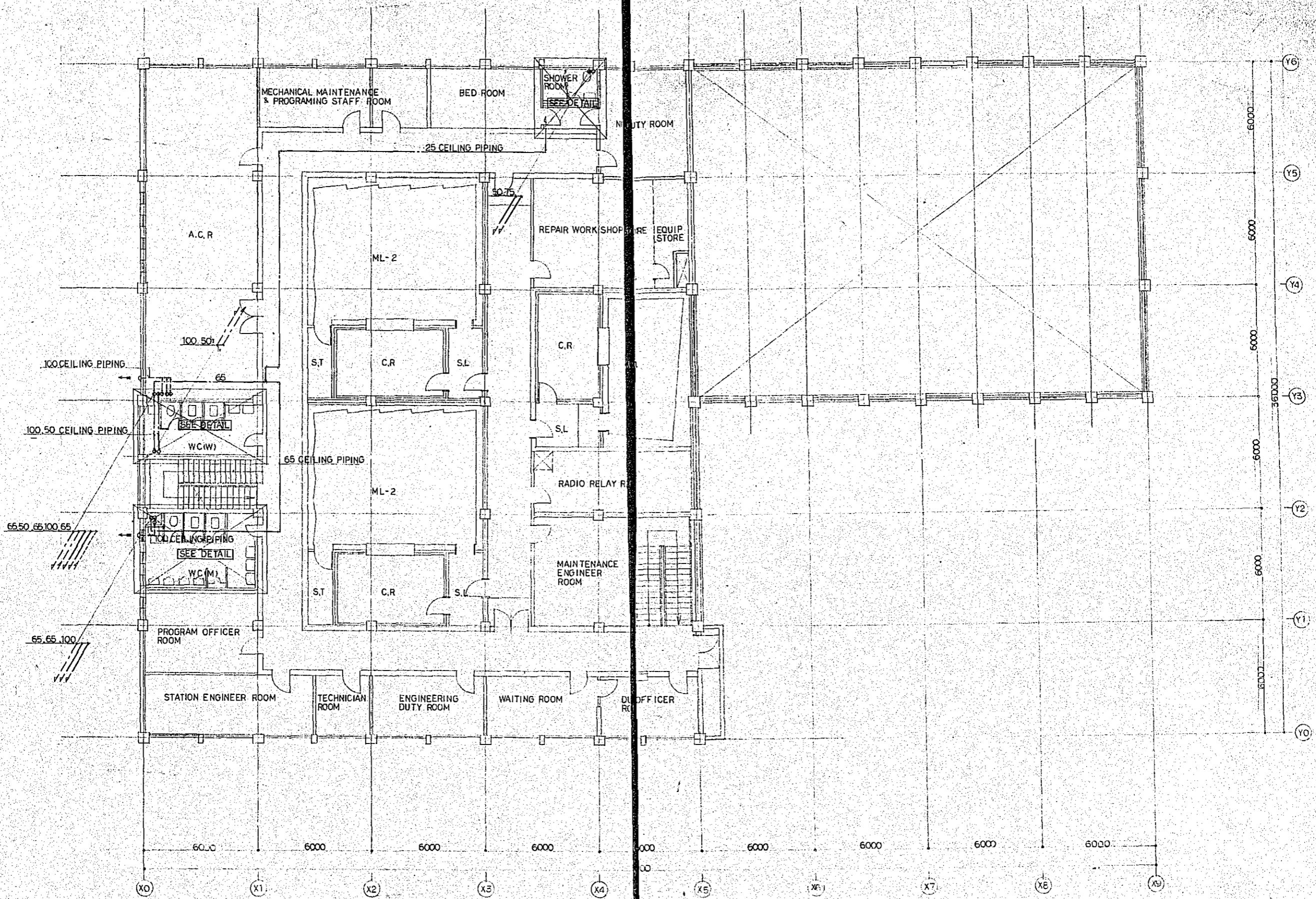
Project	NATIONAL BROADCASTING HOUSE OF RADIO BANGLADESH	No.	P-5
PLAN	GROUND FLOOR	Scale	1/100
Approved by	Designed by	Drawn by	Date
<i>[Signature]</i>	<i>[Signature]</i>	<i>[Signature]</i>	FEB 1951
JEC JAPAN ENGINEERING CONSULTANTS CO., LTD.			



PLAN - FIRST FLOOR s=1/100

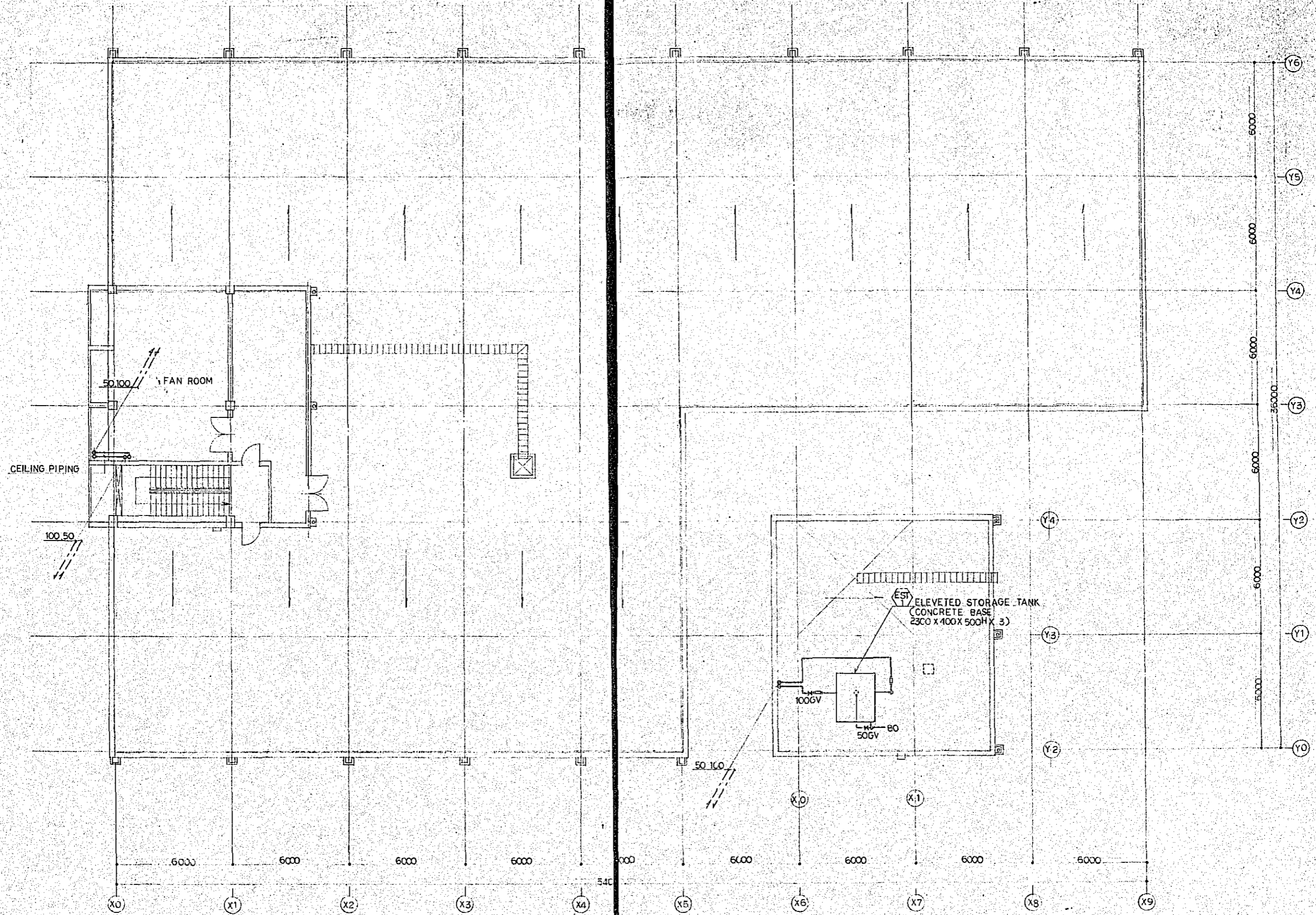
Project	NATIONAL BROADCASTING HOUSE OF RADIO BANGLADESH	No.	P-6
PLAN	FIRST FLOOR	Scale	1/100
Approved by	Designed by	Drawn by	Date
<i>[Signature]</i>	<i>[Signature]</i>	<i>[Signature]</i>	FEB 1981
JECB JAPAN ENGINEERING CONSULTANTS CO., LTD.			





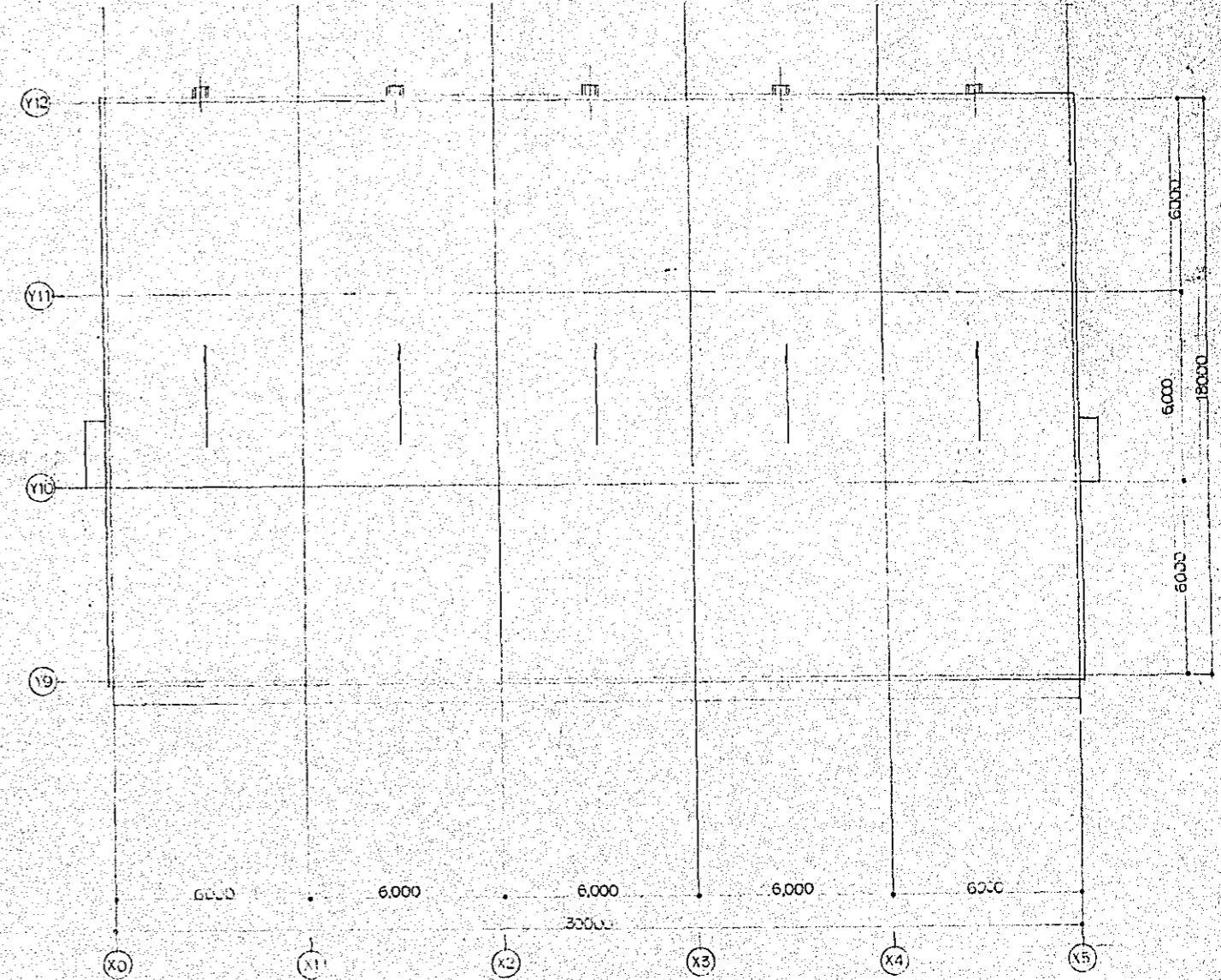
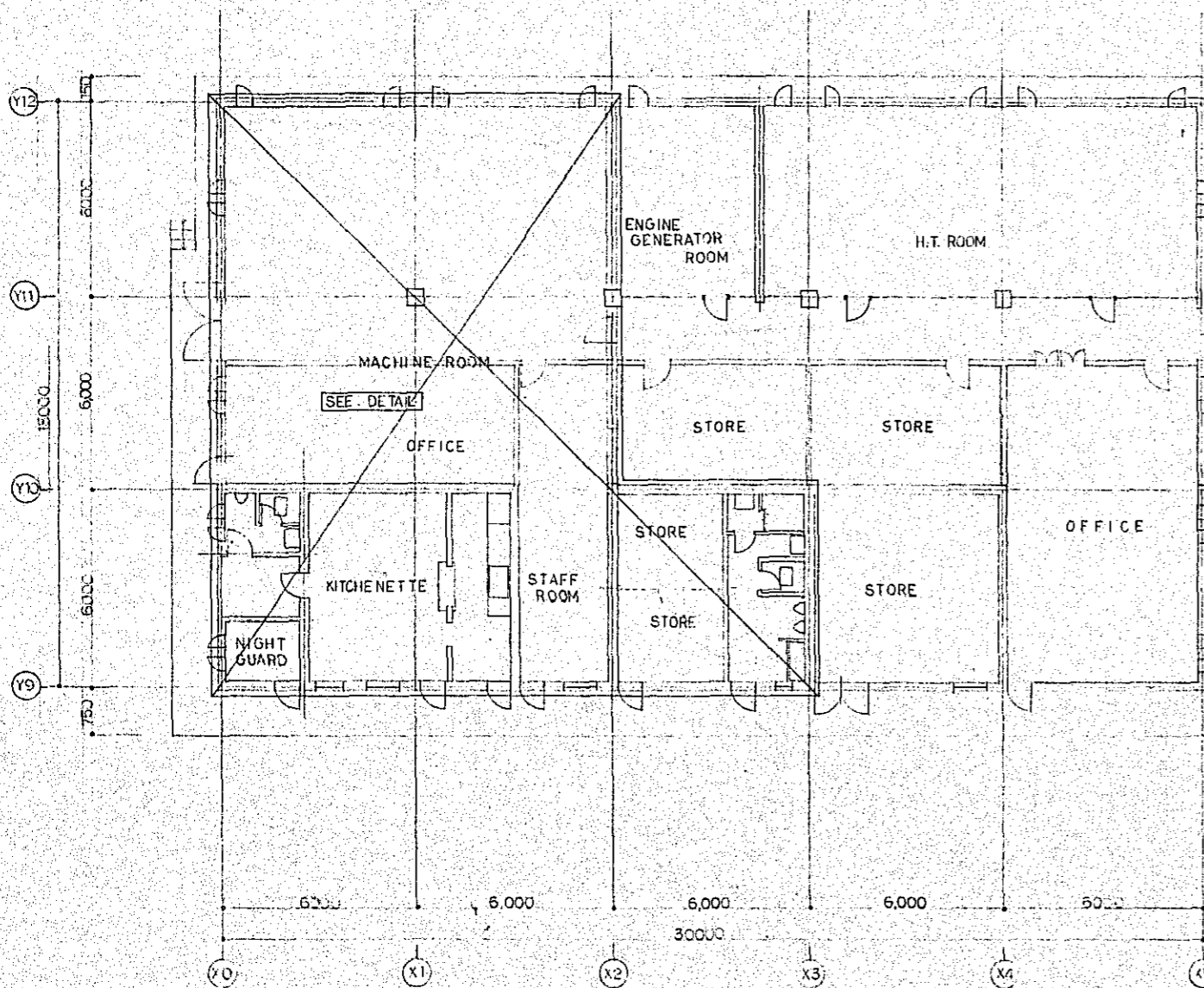
PLAN - SECOND FLOOR S=1/100

Project	NATIONAL BROADCASTING HOUSE OF RADIO BANGLADESH	No.	P-7
Scale	1/100	Drawn by	M.O
Approved by	<i>[Signature]</i>	Date	FEB 1981
JELC JAPAN ENGINEERING CONSULTANTS CO., LTD.			

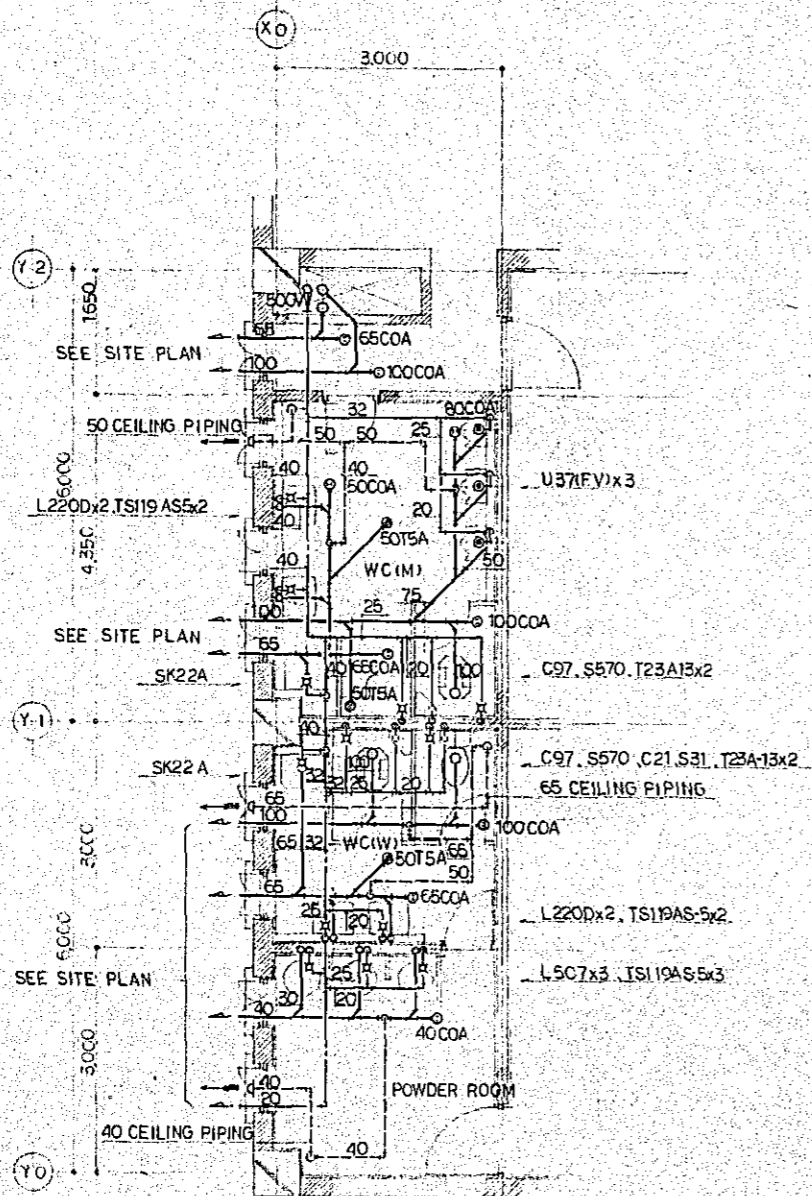


PLAN - ROOF FLOOR S: 1/10

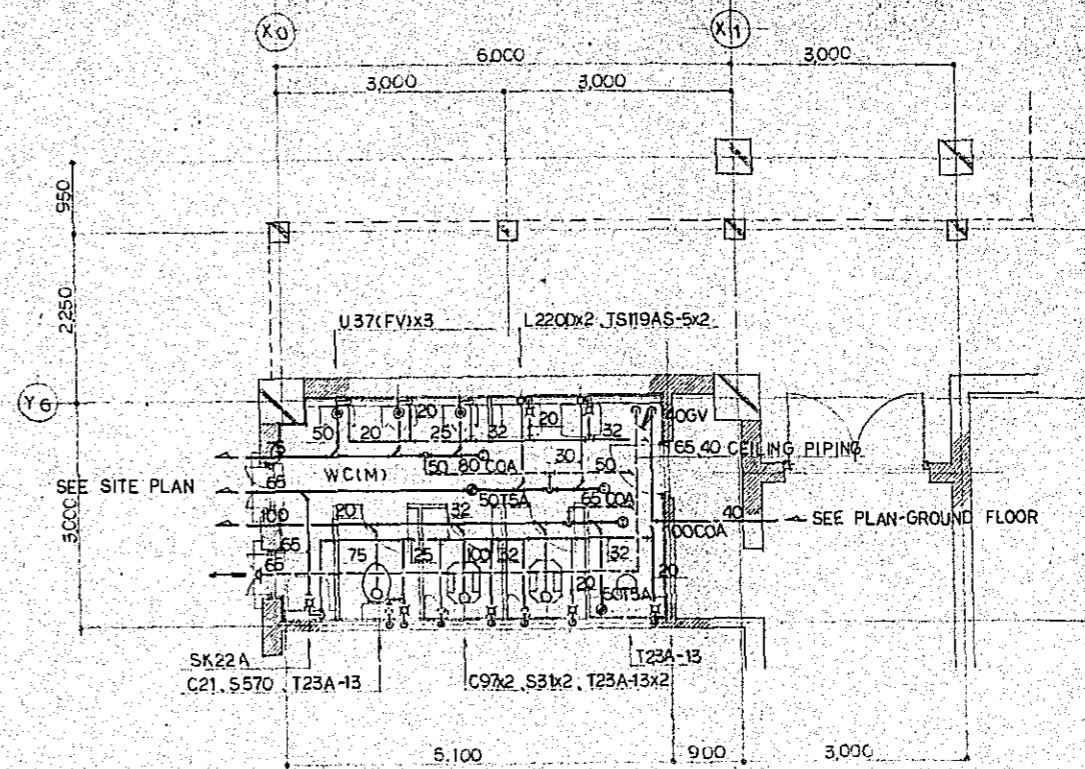
Project	NATIONAL BROADCASTING HOUSE OF RADIO BANGLADESH	No.	P-8
PLAN	ROOF FLOOR	Scale	1/100
Approved by	Designed by	Drawn by	Date
<i>[Signature]</i>	<i>[Signature]</i>	<i>[Signature]</i>	FEB 1981
JEC JAPAN ENGINEERING CONSULTANTS CO., LTD.			



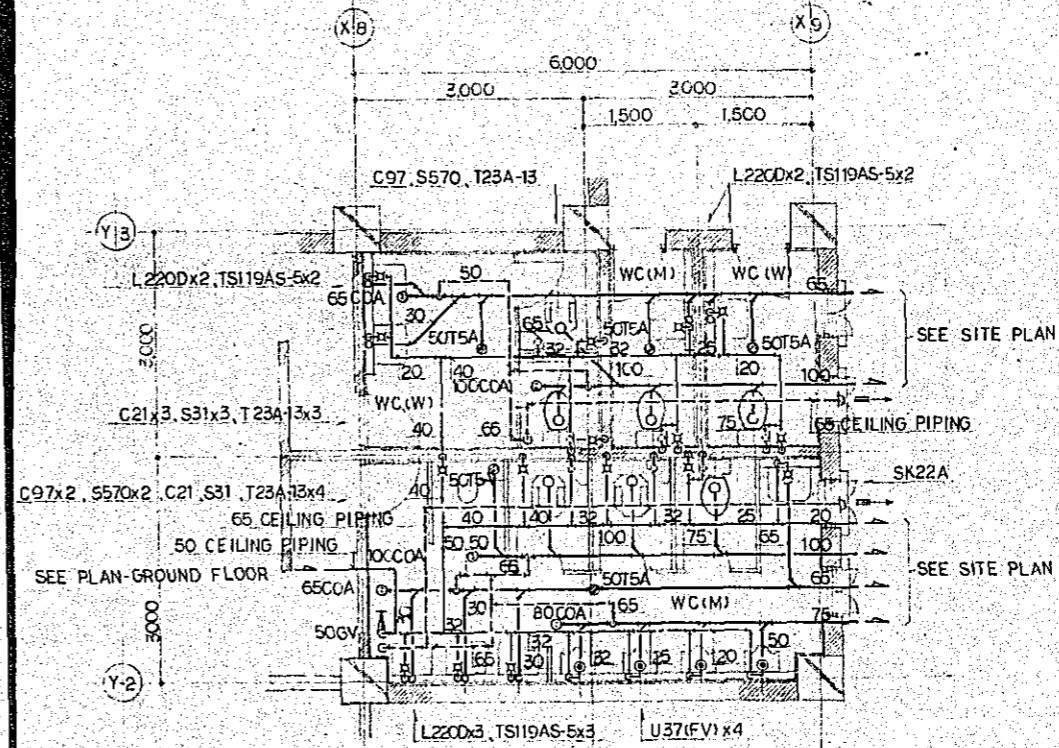
Project	NATIONAL BROADCASTING HOUSE OF RADIO BANGLADESH	No	P-9
PLAN	ANNEX	Scale	1/100
Approved by	Designed by	Drawn by	Date
<i>CE</i>	<i>KW</i>	<i>m.a</i>	FEB 1981
JEC JAPAN ENGINEERING CONSULTANTS CO., LTD.			



DETAIL OF WC 1/50 (GF-3)

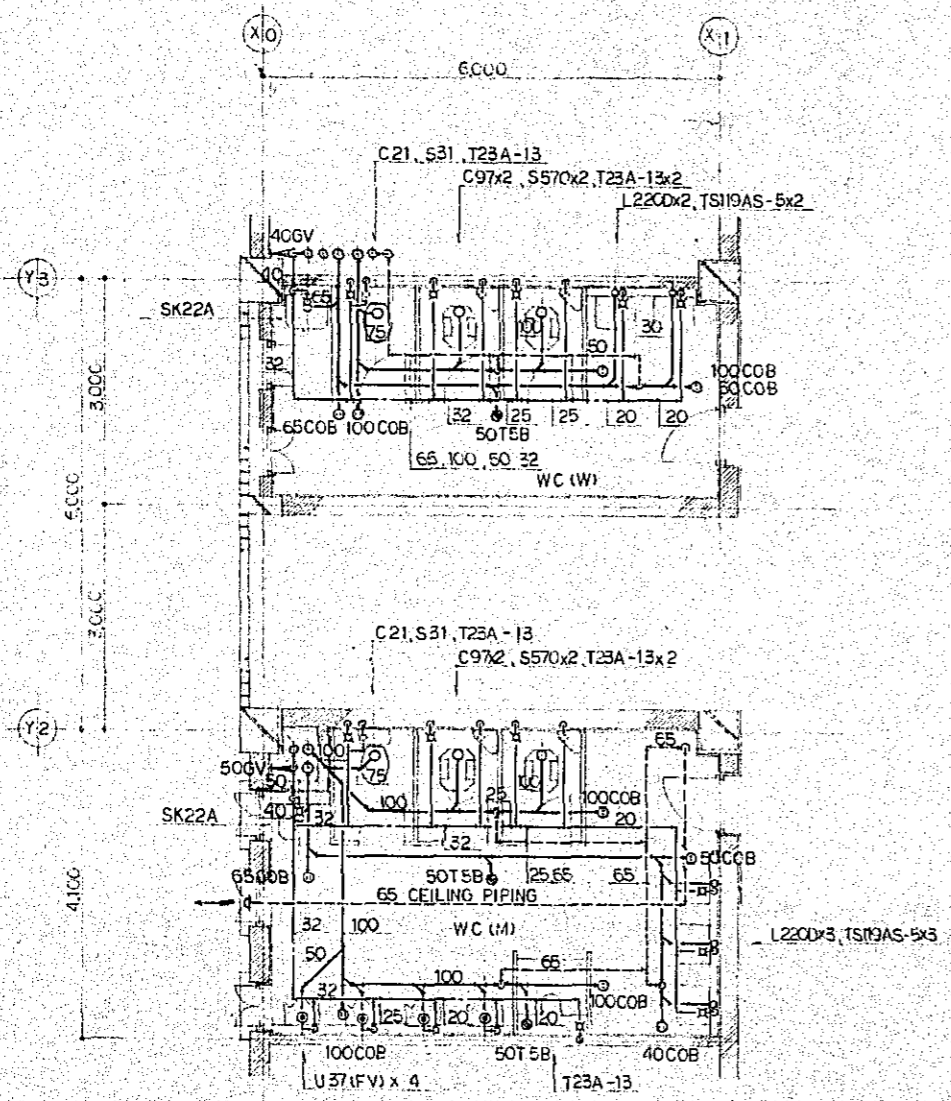


DETAIL OF WC (M) 1/50 (GF-2)

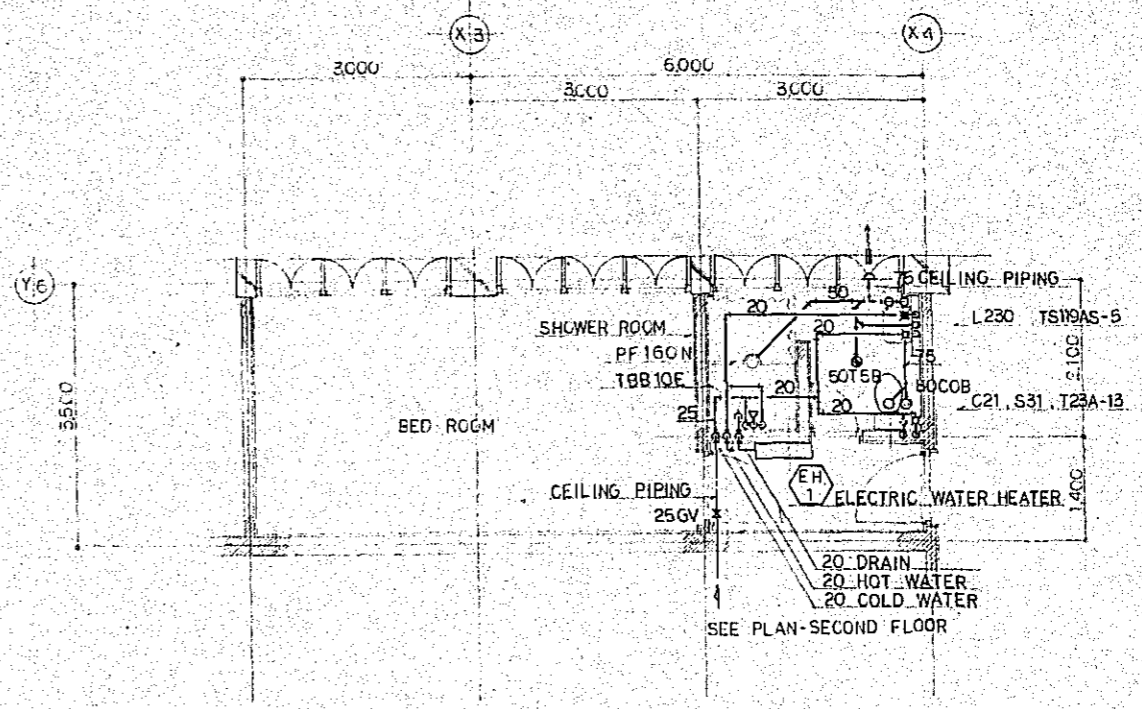


DETAIL OF WC 1/50 (GF-2)

Project	NATIONAL BROADCASTING HOUSE OF RADIO BANGLADESH	No.	P-10
Scale	1/50	Date	FEB 1981
Approved by	Designed by	Drawn by	
JEC JAPAN ENGINEERING CONSULTANTS CO., LTD.			

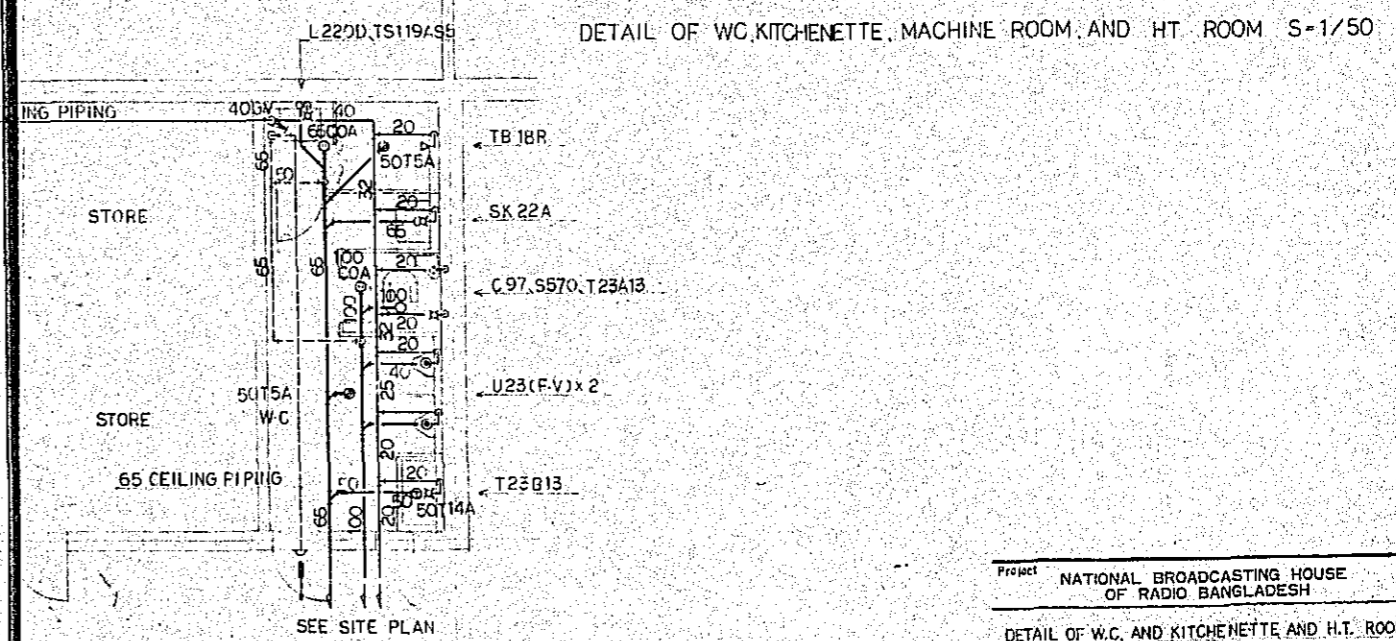
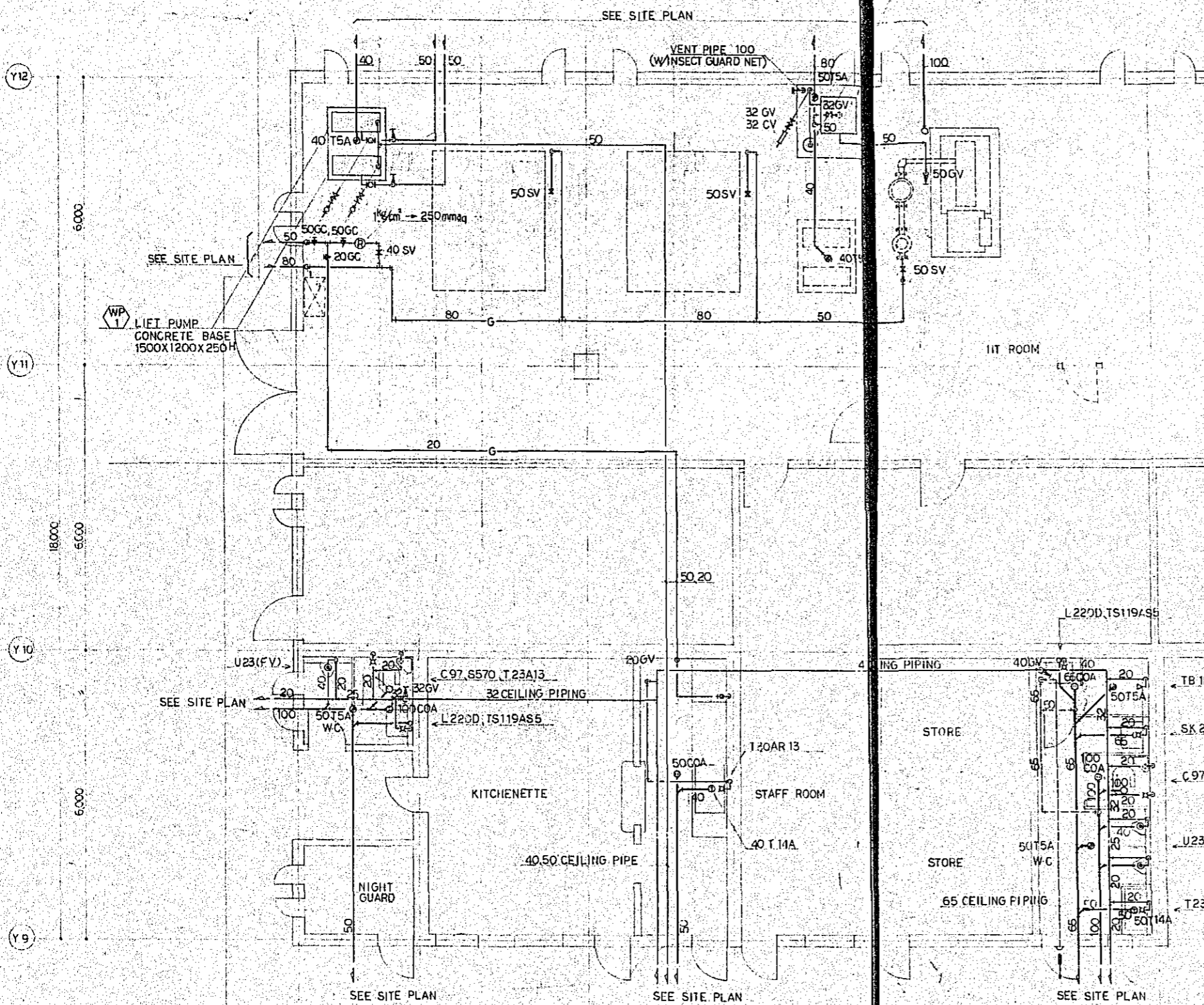
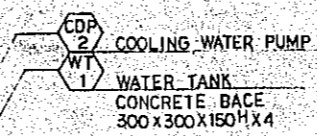


DETAIL OF WC 1/50 (FIRST FLOOR, SECOND FLOOR)



DETAIL OF SHOWER ROOM & BED ROOM 1/50 (SECOND FLOOR)

Project	NATIONAL BROADCASTING HOUSE OF RADIO BANGLADESH	No	P-11
		Scale	1/50
Approved by	Designed by	Drawn by	Date
(Signature)	(Signature)	MA	FEB 1981
JEC JAPAN ENGINEERING CONSULTANTS CO., LTD.			

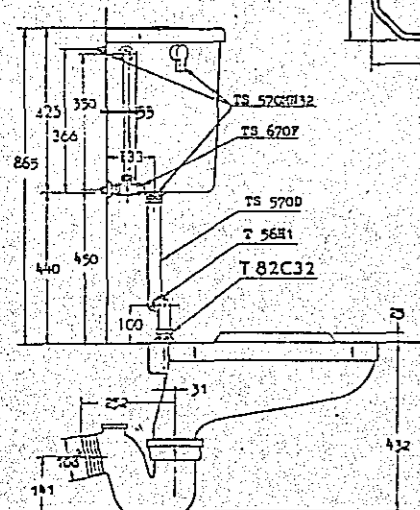


Project	NATIONAL BROADCASTING HOUSE OF RADIO BANGLADESH	No.	P-12
Scale			1/50
Approved by	Designed by	Drawn by	Date
		M.B.	FEB 1991
JEC JAPAN ENGINEERING CONSULTANTS CO., LTD.			

SCALE 1:10

FITTINGS		
Item No.	Name	Qty.
TS 570AN	Ball tap	1
TS 570CM32	Douglas valve with lever handle	1
T 50E2	4 set wood screws	1
TS 670F	Supply with stop	1
TS 570D	Flush pipe	1
T 82C32	Clonnet spud	1
T 56B1	Pipe holder	1

TS 570CM32 is representative of all the item numbers marked \*

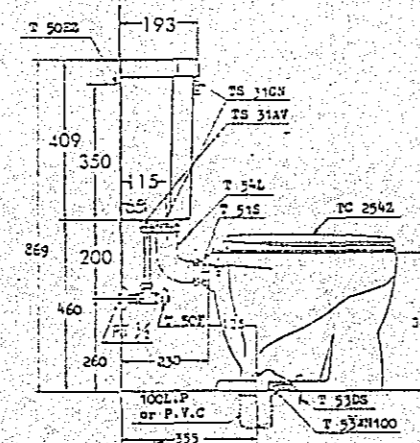


C 977 VITREOUS CHINA EASTERN WATER CLOSET  
A 97 VITREOUS CHINA P-TRAP  
S 5705 VITREOUS CHINA LOW TANK

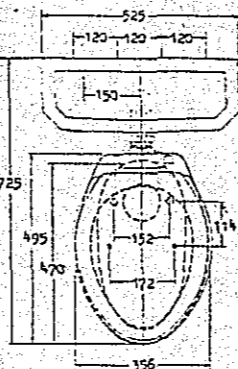
SCALE 1:10

FITTINGS		
Item No.	Name	Qty.
TS 31AV	Ball tap	1
TS 31CN	Douglas valve with lever handle	1
T 50F	Supply with stop	1
T 50E2	4 set wood screws	1
T 54L	Flushing pipe	1
T 51S	Clonnet spud	1
TS 254Z	Open front seat with cover	1
T 55PH100	Floor flange	1
T 53DS	2 set wood screws	1

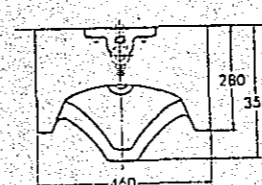
TS 3176N is representative of all the item numbers marked \*



C 21 VITREOUS CHINA SILENCING WATER CLOSET  
S 31 VITREOUS CHINA LOW TANK

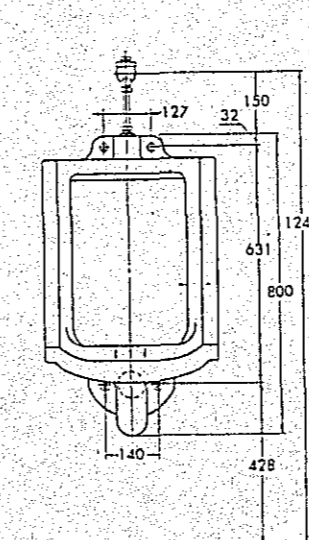


IMPLEMENT 1/10



SCALE 1:10

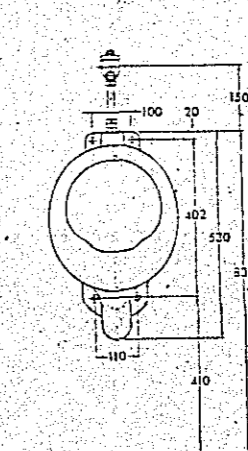
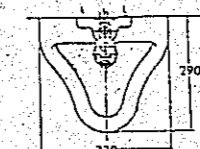
FITTINGS		
Item No.	Name	Qty.
T 60S	Flush valve	1
T 62-16	Urinal spud	1
T 64CW	Wall flange	1
TU 37D	2 set bolts	1



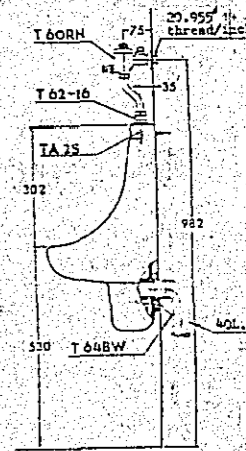
U 37 VITREOUS CHINA URINAL STALL

SCALE 1:10

FITTINGS		
Item No.	Name	Qty.
T 60EM	Flush valve	1
T 62-16	Urinal spud	1
T 64BW	Wall flange	1
TA 2S	2 set wood screws	2

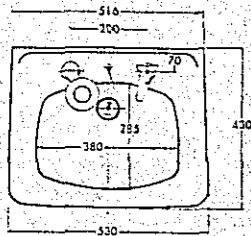


U 23 VITREOUS CHINA WALL URINAL



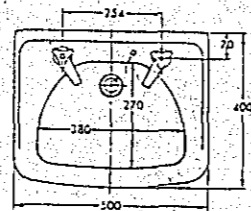
Project	NATIONAL BROADCASTING HOUSE OF RADIO BANGLADESH	No.	P-13
Detail	DETAIL OF IMPLEMENT	Scale	1/10
Approved by	Designed by <i>MLC</i>	Drawn by	<i>MLC</i>
Date	FEB 1981		

JEC JAPAN ENGINEERING CONSULTANTS CO., LTD.



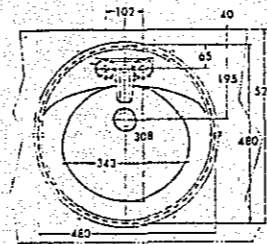
SCALE 1:10

FITTINGS		
Item No.	Name	Q.t.y
T 205	Faucet	1
T 4A	Supply with stop	1
T 6P	Waste & P-trap	1
TL 220DAY	2 back hangers with expansion bolts	1
TS 126AS	Liquid soap dispenser	1



SCALE 1:10

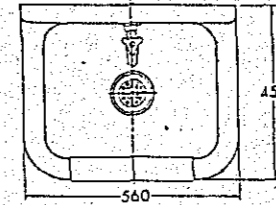
FITTINGS		
Item No.	Name	Q.t.y
T 205	Faucet	2
T 4A	Supply with stop	2
T 6P	Waste & P-trap	1
T 9RAY	2 set back hangers	1
T 8CAY	2 set straps	1



SCALE 1:10

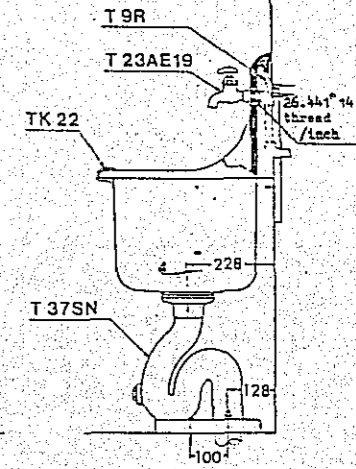
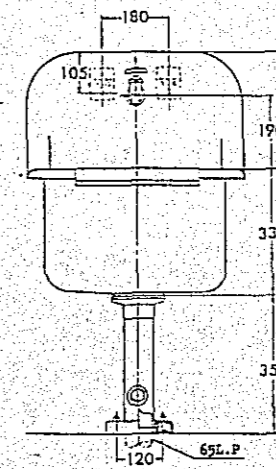
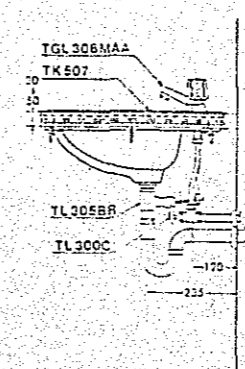
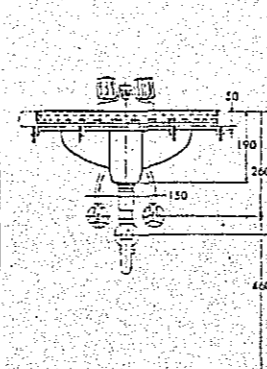
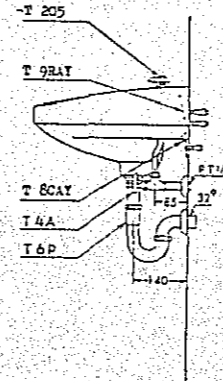
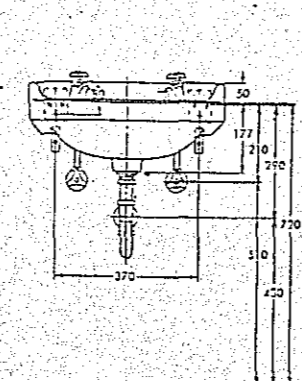
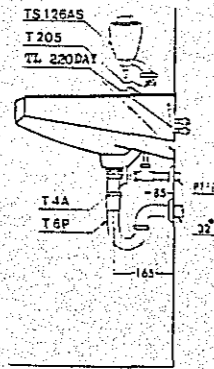
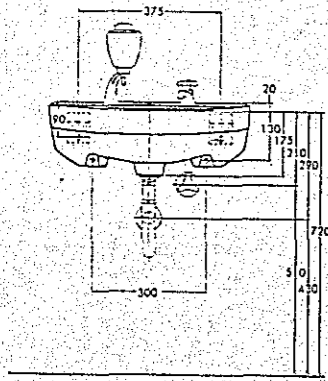
FITTINGS		
Item No.	Name	Q.t.y
TGL 306NAA	Center-set faucet	1
TL 300C	Supply with stop	2
TL 305BR	Waste & P-trap	1
TK 507	Stainless frame	1

TGL 507MPA is representative of all the item numbers marked %.



SCALE 1:10

FITTINGS		
Item No.	Name	Q.t.y
T 23AE19	Wall faucet	1
T 37SN	Waste & S-trap	1
TK 22	Rim guard	1
T 9R	2 set back hangers	1



L 220 VITREOUS CHINA LAVATORY

L 230 VITREOUS CHINA LAVATORY

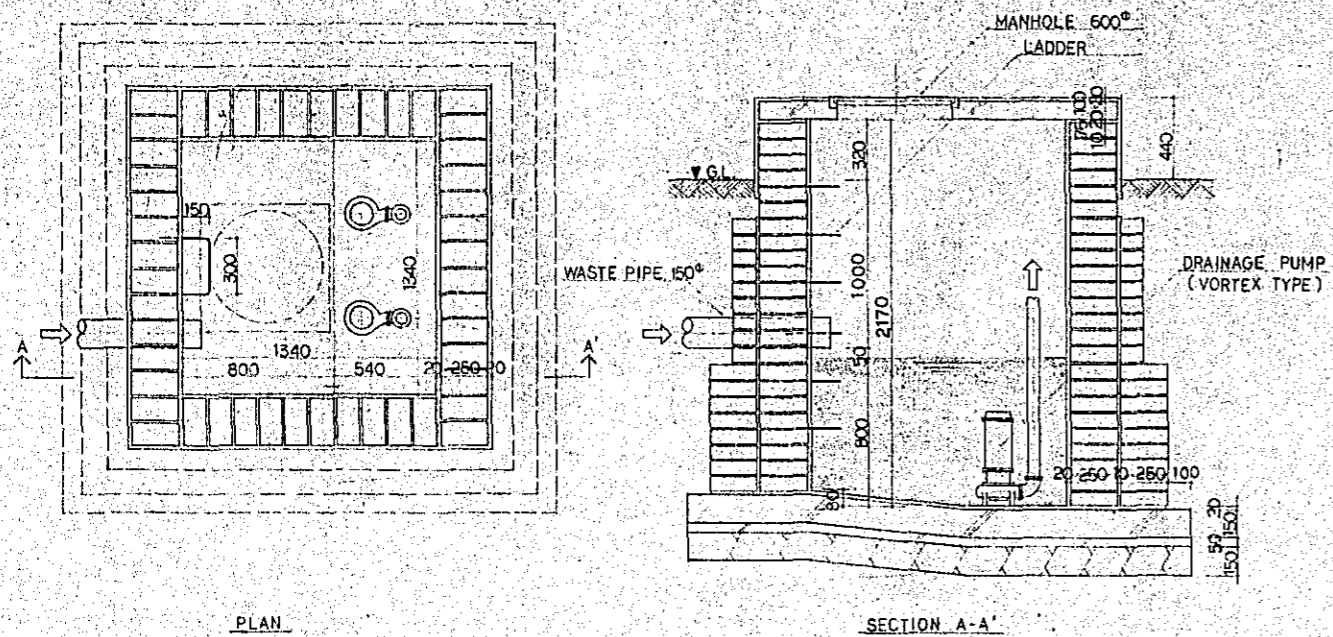
L 507 VITREOUS CHINA LAVATORY

SK 22A VITREOUS CHINA SERVICE SINK

IMPLEMENT 1/10

Project	NATIONAL BROADCASTING HOUSE OF RADIO BANGLADESH	No	P-14
DETAIL OF IMPLEMENT		Scale	1/10
Approved by	Designed by	Drawn by	Date
			FEB 1981
JEC JAPAN ENGINEERING CONSULTANTS CO., LTD.			

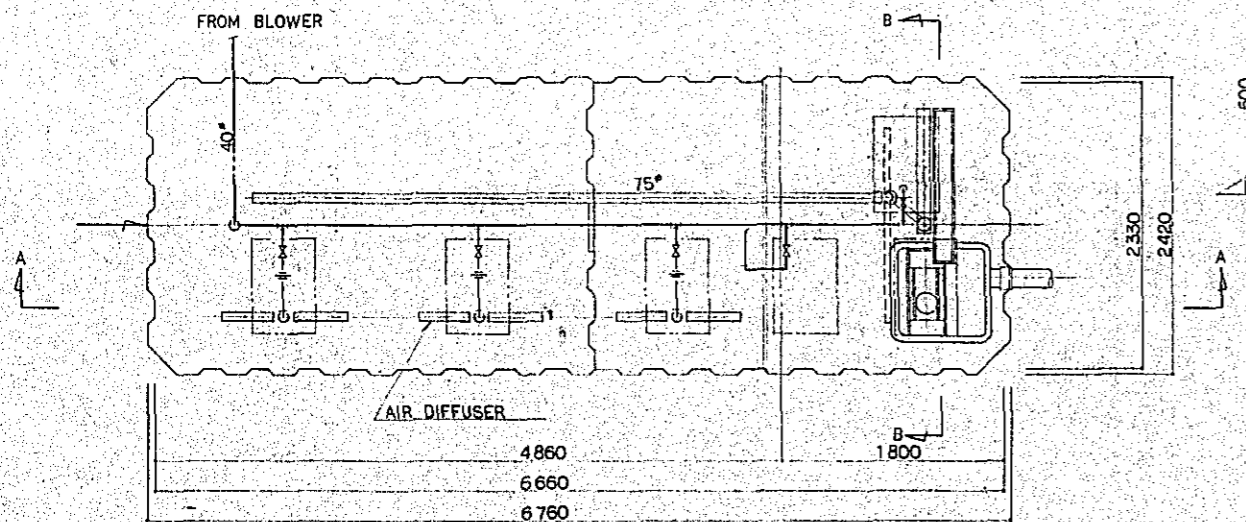




PLAN

SECTION A-A

SUMP PIT 1/20



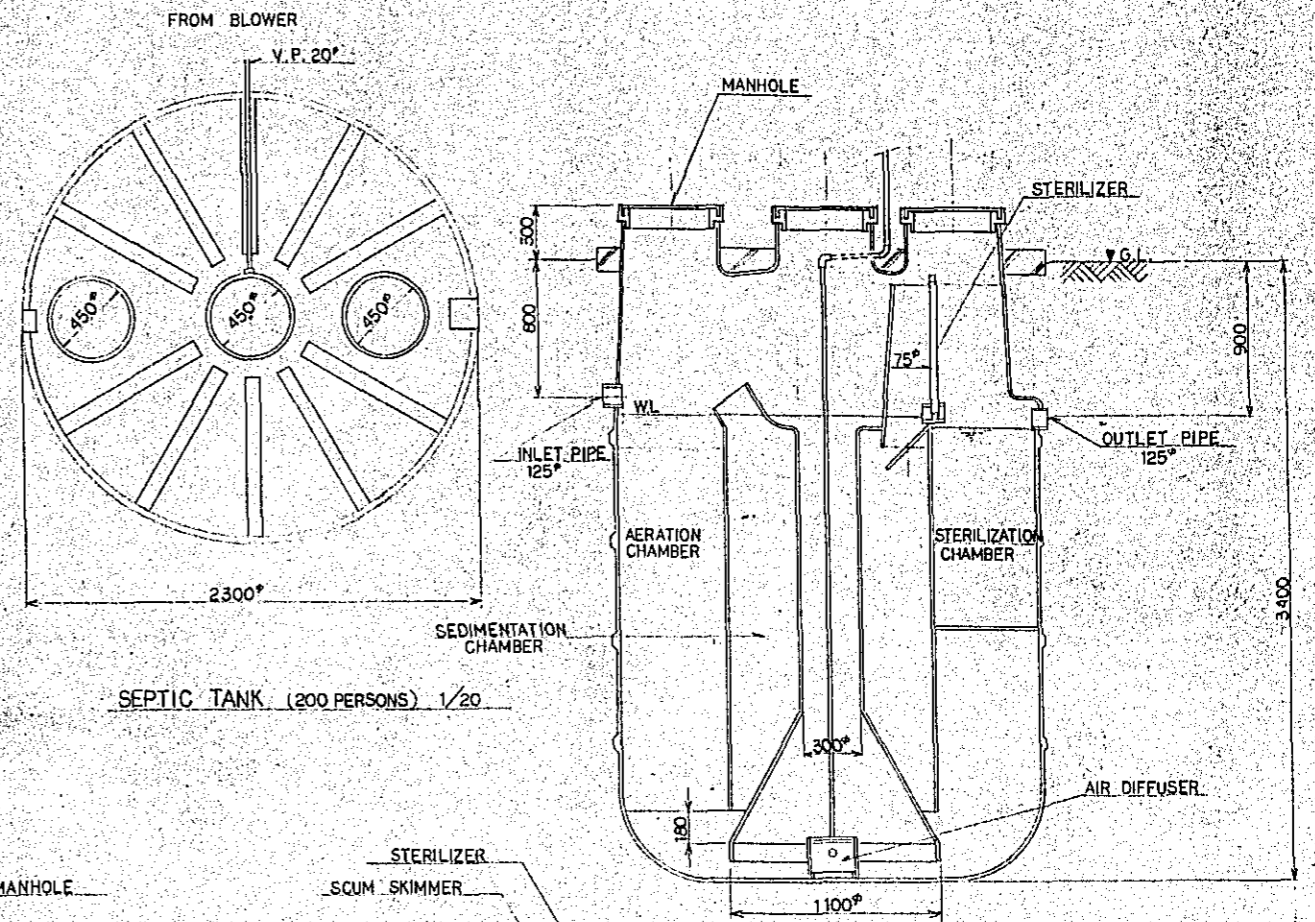
FROM BLOWER

AIR DIFFUSER

PLAN

SECTION A-A

SEPTIC TANK (200 PERSONS) 1/20



FROM BLOWER

V.P. 20°

MANHOLE

STERILIZER

INLET PIPE 125°

AERATION CHAMBER

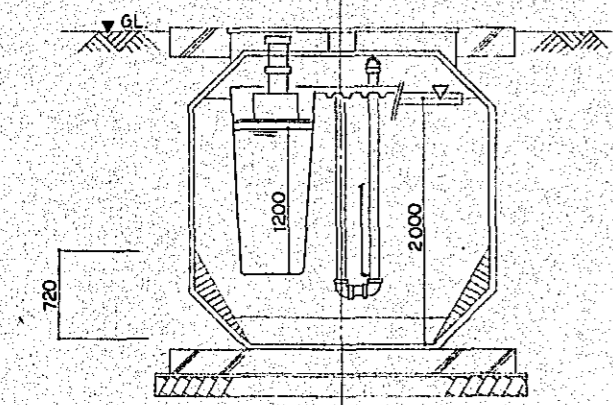
STERILIZATION CHAMBER

OUTLET PIPE 125°

SEDIMENTATION CHAMBER

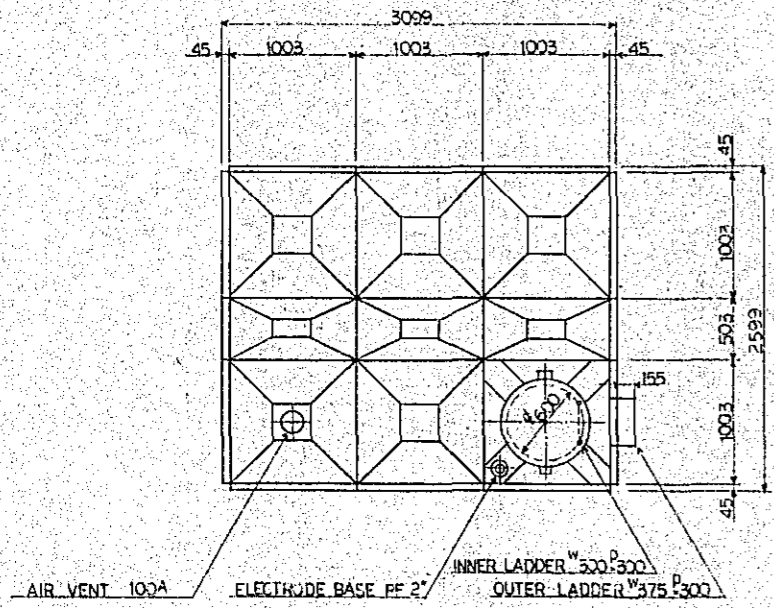
AIR DIFFUSER

SEPTIC TANK (400 PERSONS) 1/30

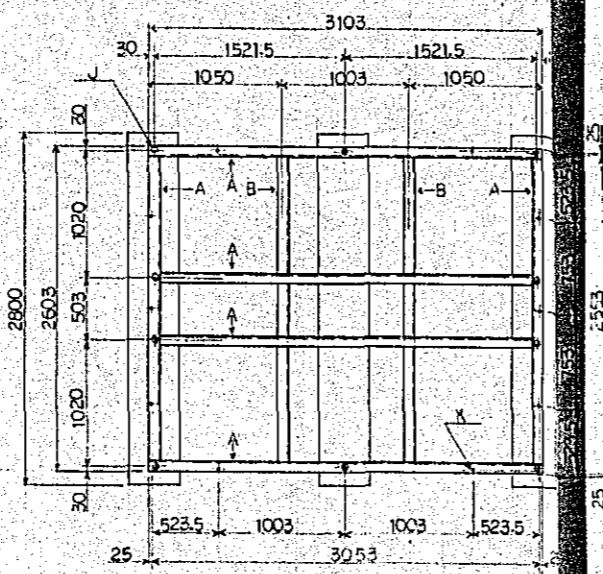


SECTION B-B

Project	NATIONAL BROADCASTING HOUSE OF RADIO BANGLADESH	No.	P-15
		Scale	1/20, 1/30
Approved by	Designed by	Drawn by	Date
			FEB 1981
JEC JAPAN ENGINEERING CONSULTANTS CO., LTD.			

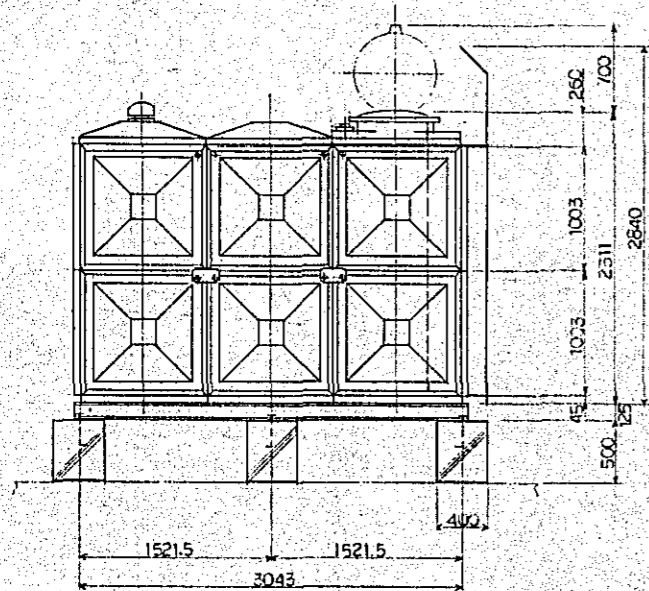


PLAN



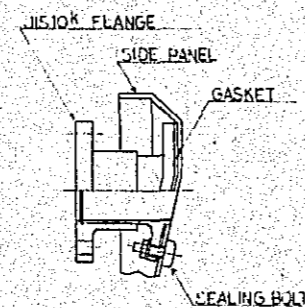
STEEL FOUNDATION

STEEL FOUNDATION NOTE	
A	C-125 x 65 x 6
B	L-65 x 65 x 6
K	12-M12(W/2) ANCHOR BOLTS
J	10-M16(W/2) FOUNDATION BOLTS

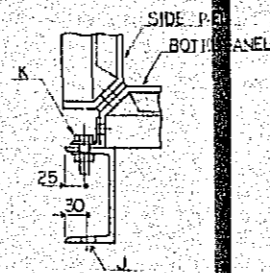


FRONT VIEW

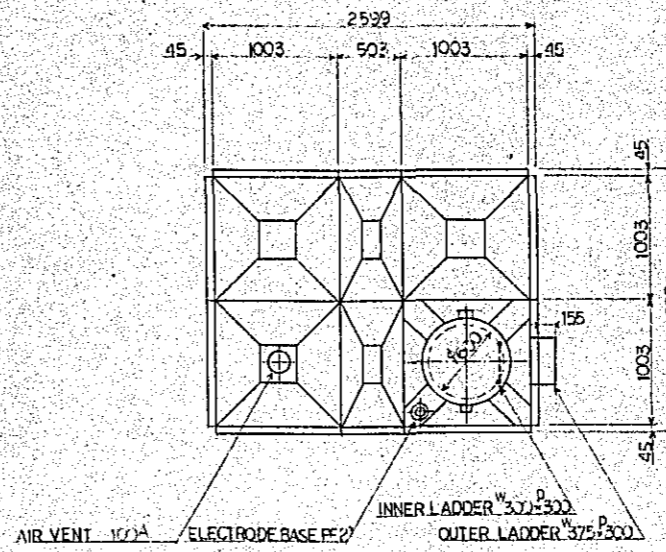
WATER RECEIVE TANK 1/30



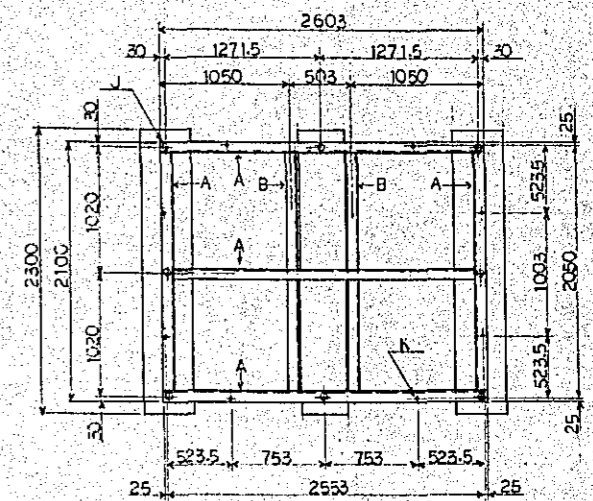
DETAIL OF NOZZLE



INSTALLATION DRAWING ANCHOR SET



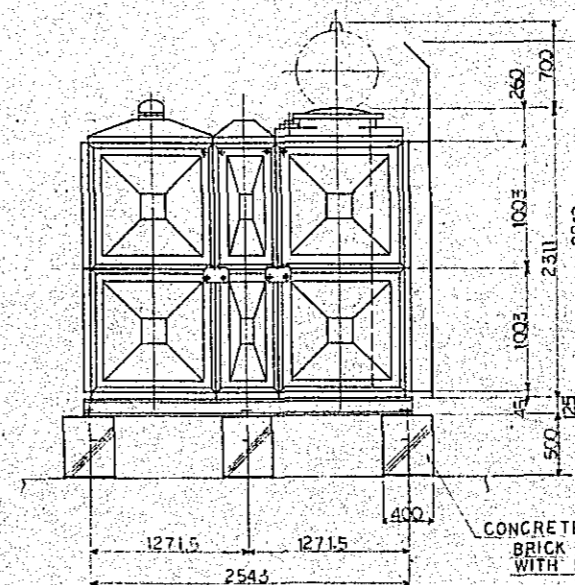
PLAN



STEEL FOUNDATION

STEEL FOUNDATION NOTE	
A	C-125 x 65 x 6
B	L-65 x 65 x 6
K	10-M12(W/2) ANCHOR BOLTS
J	8-M16(W/2) FOUNDATION BOLTS

F-PANEL TANK  
FW 10TON SA TYPE (20 x 25 x 20H)



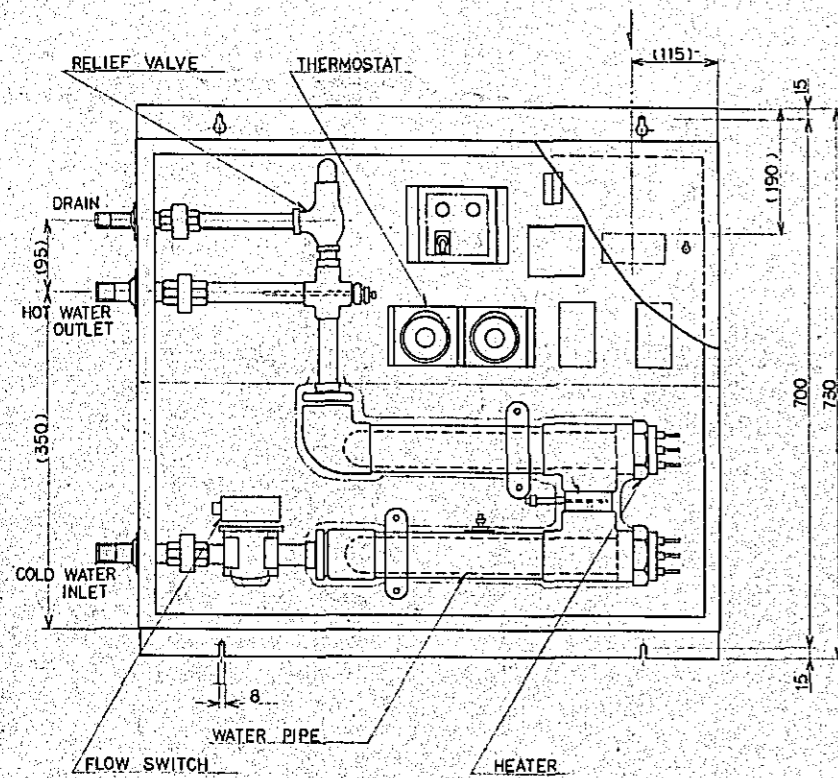
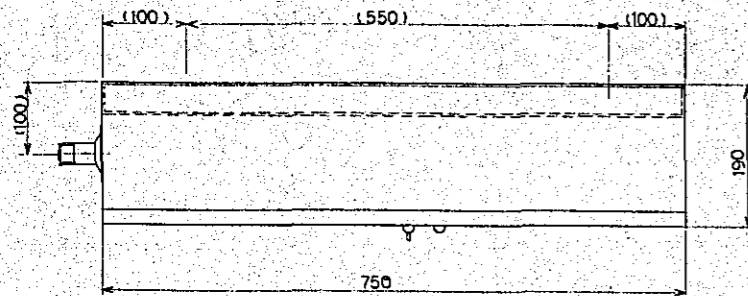
FRONT VIEW

CONCRETE FOUNDATION  
BRICK FOUNDATION ALLOWABLE  
WITH 500mm WIDTH

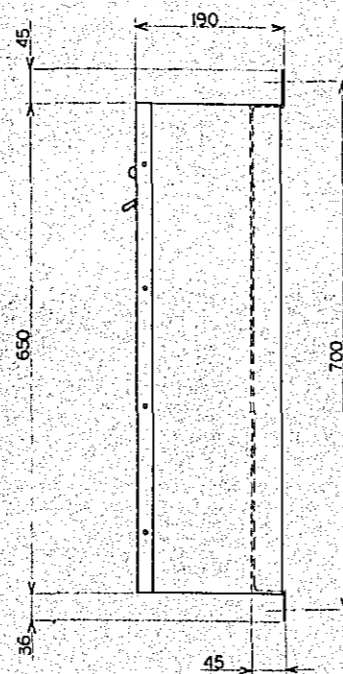
ELEVATED STORAGE TANK 1/30

1. TANK COLOUR IS IVORY
2. THE STEEL FRAMEWORK SHOULD BE CONSTRUCTED WITH CROSSMEMBERS PROPERLY LOCATED AND SHOULD BE CARED ABOUT THE LEVEL
3. PANEL SHOULD BE USE HEAT INSULATION TYPE

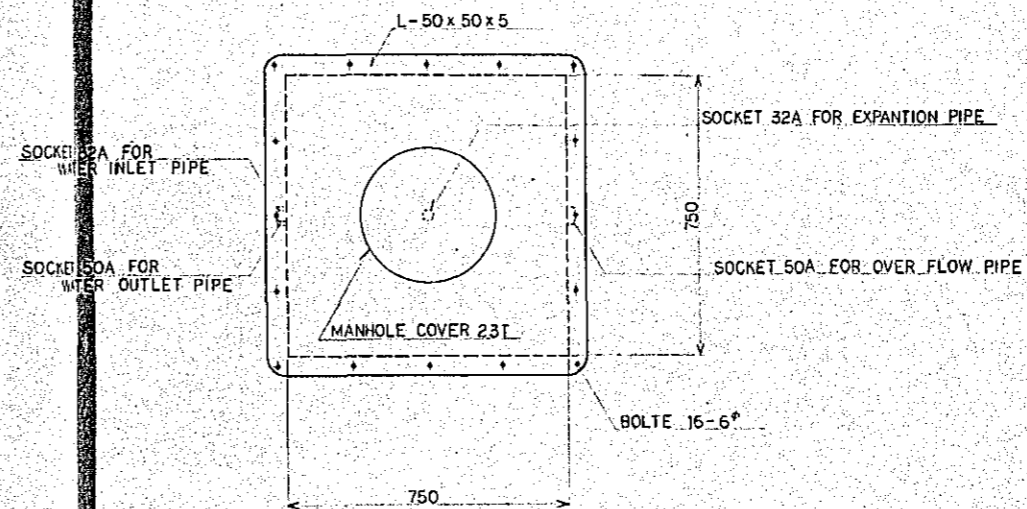
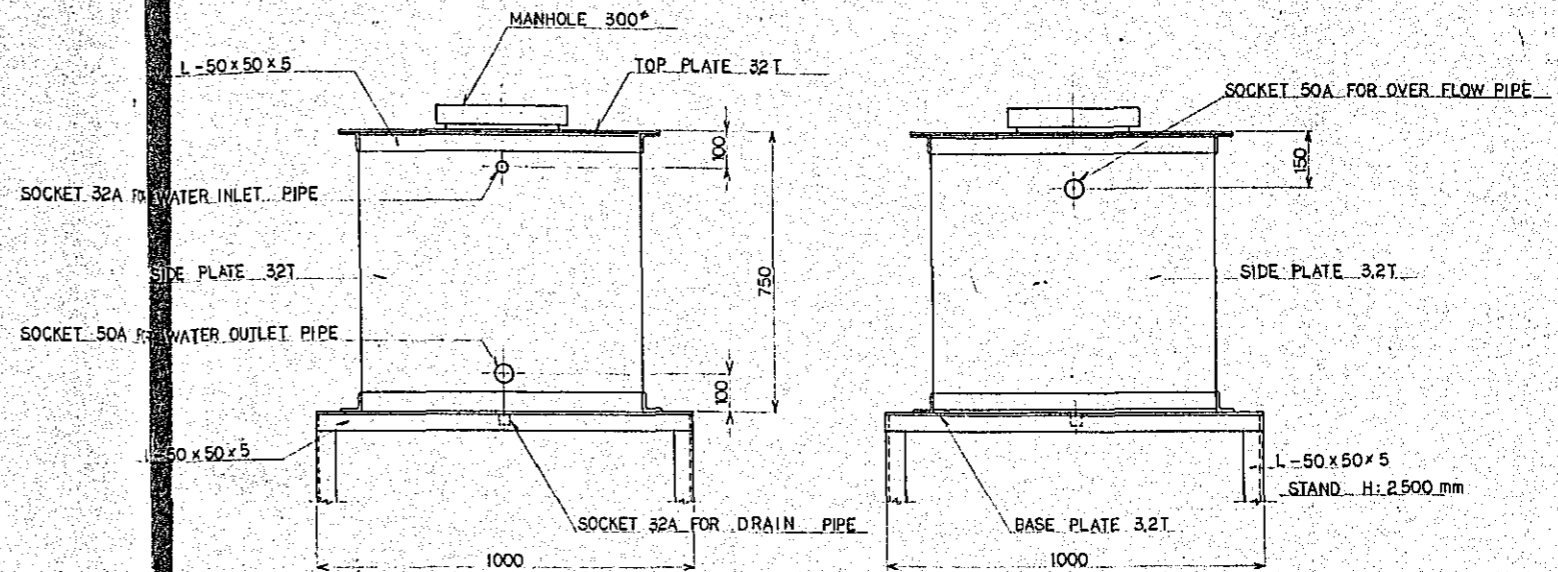
Project	NATIONAL BROADCASTING HOUSE OF RADIO BANGLADESH	No.	P-16
DETAIL OF WATER RECEIVING TANK AND ELEVATED STORAGE TANK		Scale	1/30
Approved by	Designed by	Drawn by	Date
		M.C.	FEB 1981
JEC JAPAN ENGINEERING CONSULTANTS CO., LTD.			



ELECTRIC WATER HEATER 1/5



POWER SUPPLY 3 $\phi$  x 415V  
 ELECTRIC POWER 10 kW  
 GENERATED CALORIFIC VALUE 8600 KCal/h



WATER TANK 1/10

Project	NATIONAL BROADCASTING HOUSE OF RADIO BANGLADESH	No.	P-17
Scale	1/5, 1/10		
Approved By	Designed By	Drawn By	Date
		ma	FEB 1981
JEC JAPAN ENGINEERING CONSULTANTS CO., LTD.			

JICA