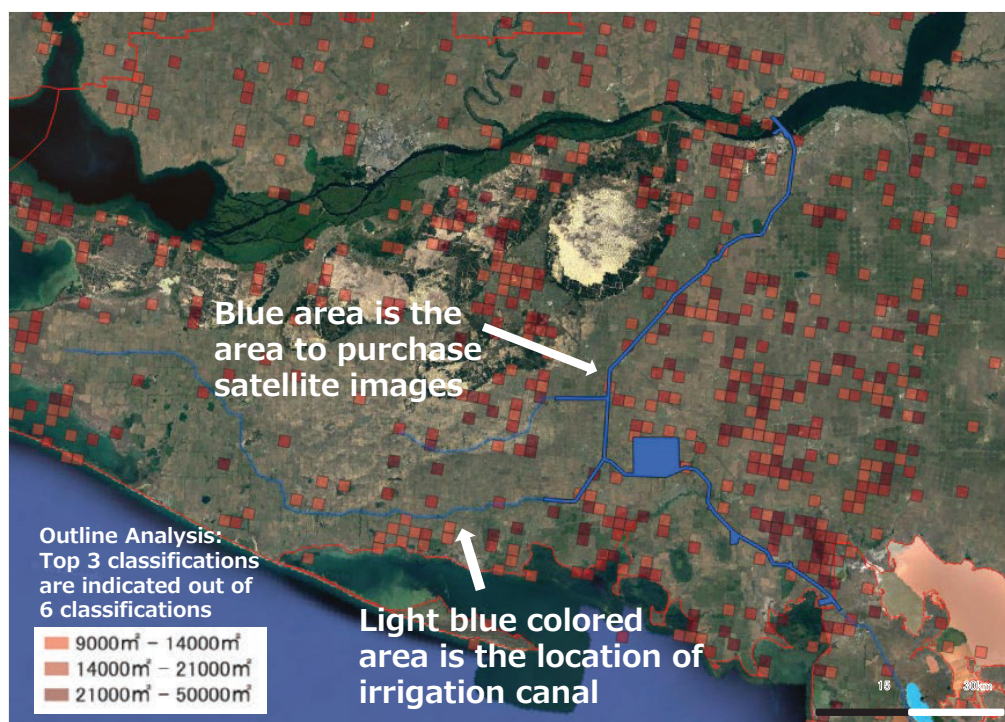


Annex 2.2.9

Location and Map Number in the Selected Irrigation Scheme

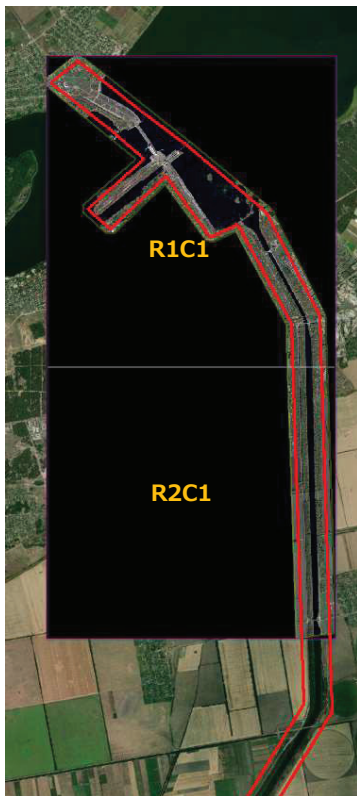
Location and Map Number in the Selected Irrigation Scheme

North Crimean Canal

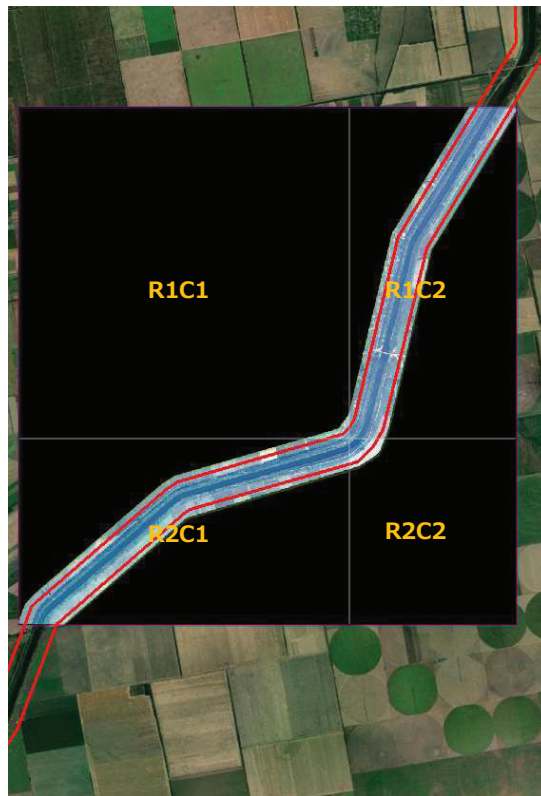


North Crimean Canal

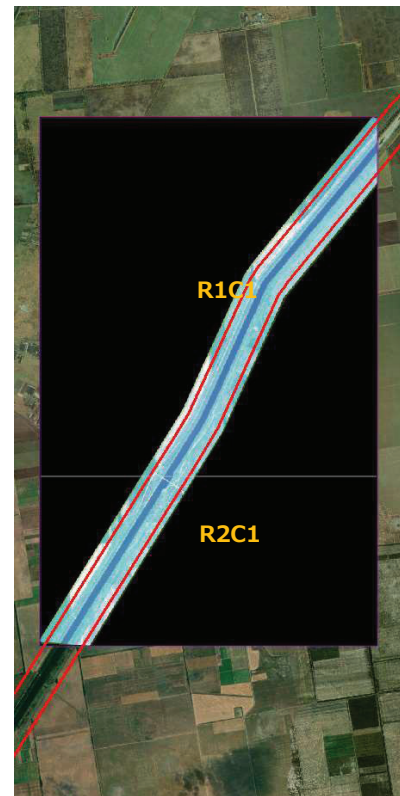
2022/11/01



2022/10/29



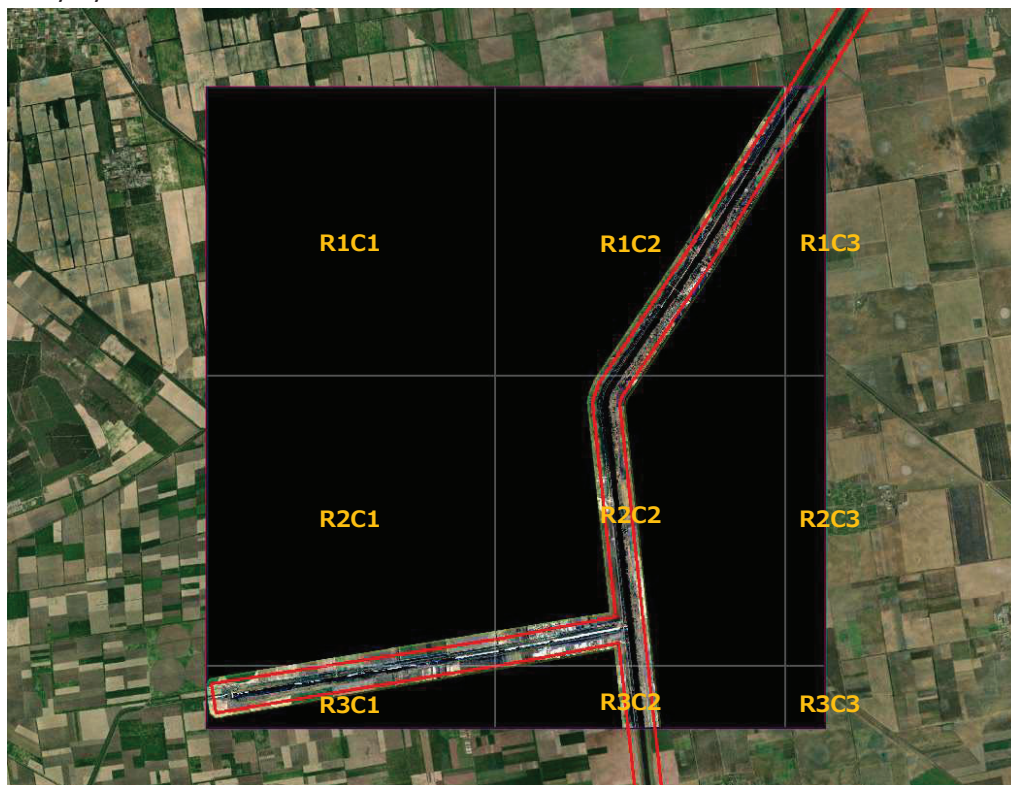
2023/04/18



© PASCO CORPORATION

North Crimean Canal

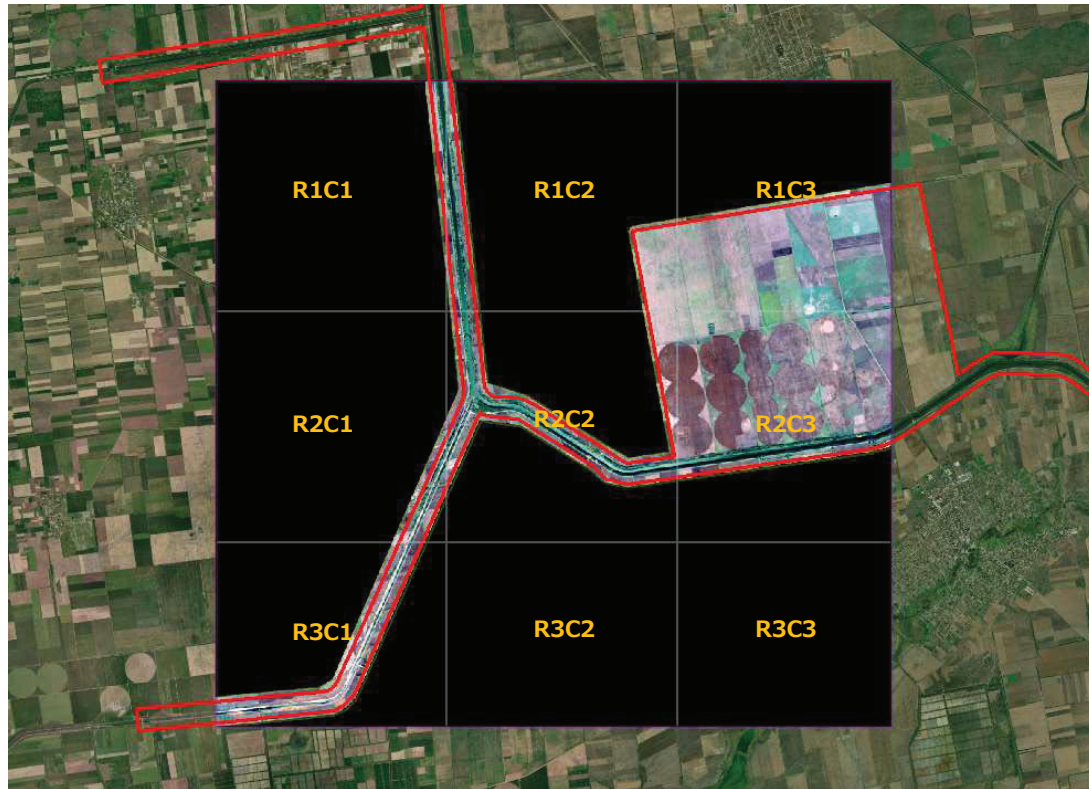
2023/02/09



© PASCO CORPORATION

North Crimean Canal

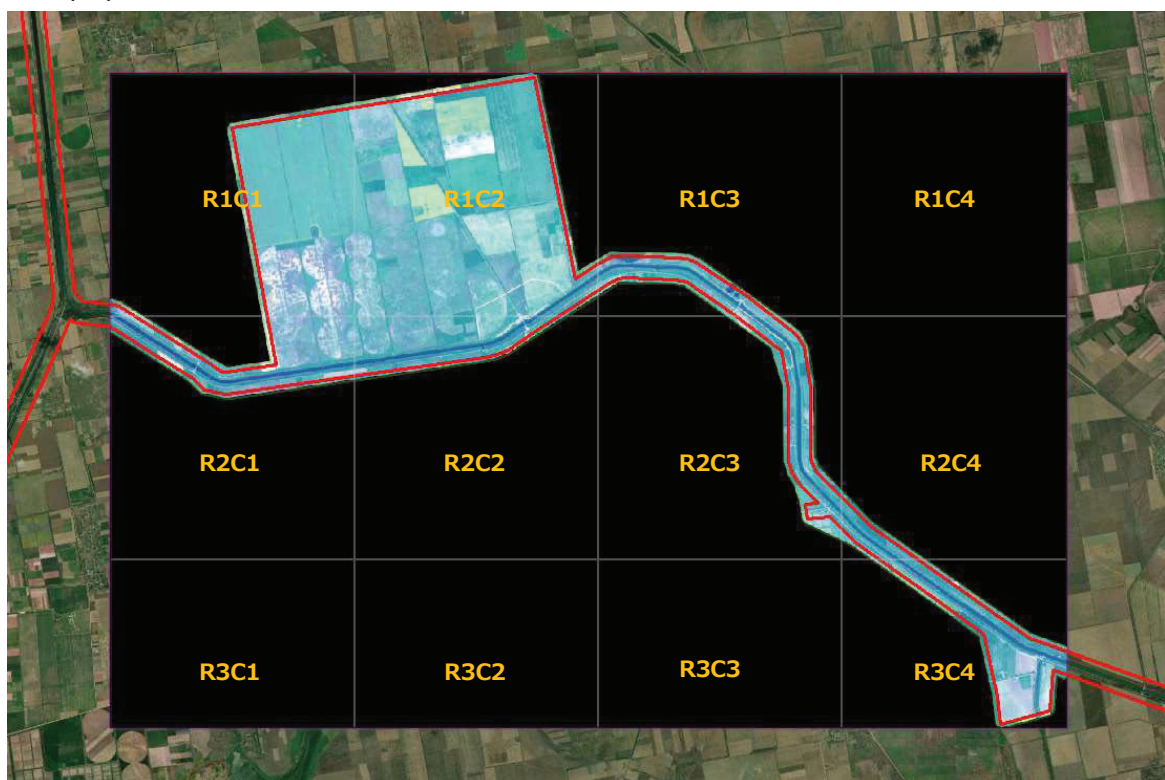
2022/10/24



© PASCO CORPORATION

North Crimean Canal

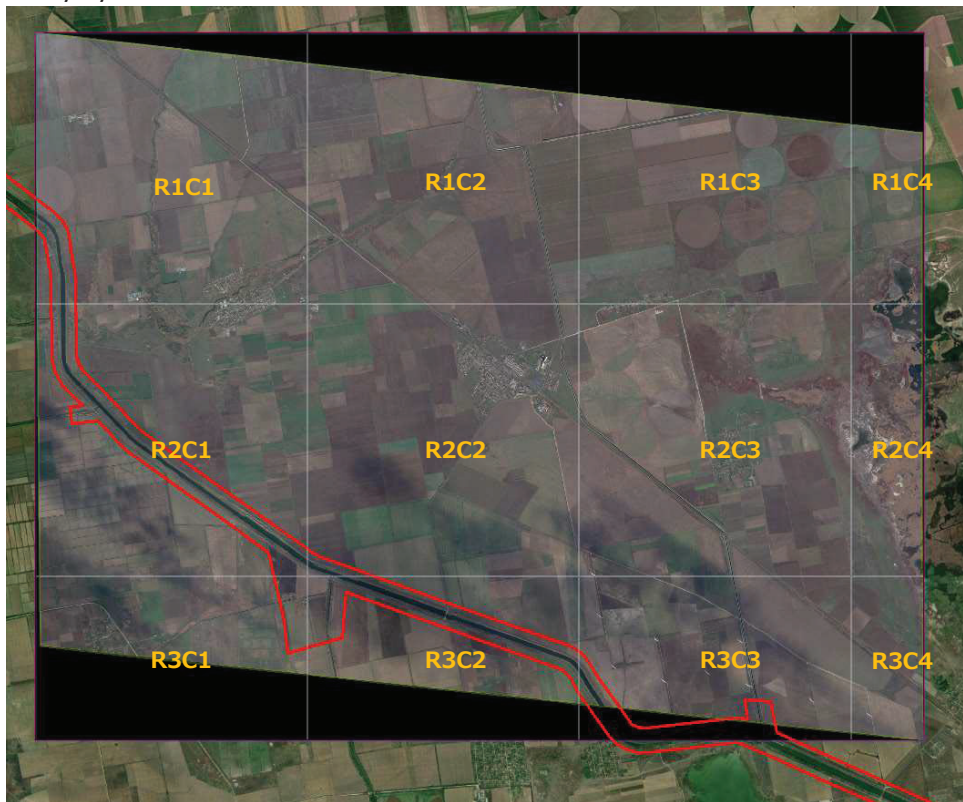
2023/05/06



© PASCO CORPORATION

North Crimean Canal

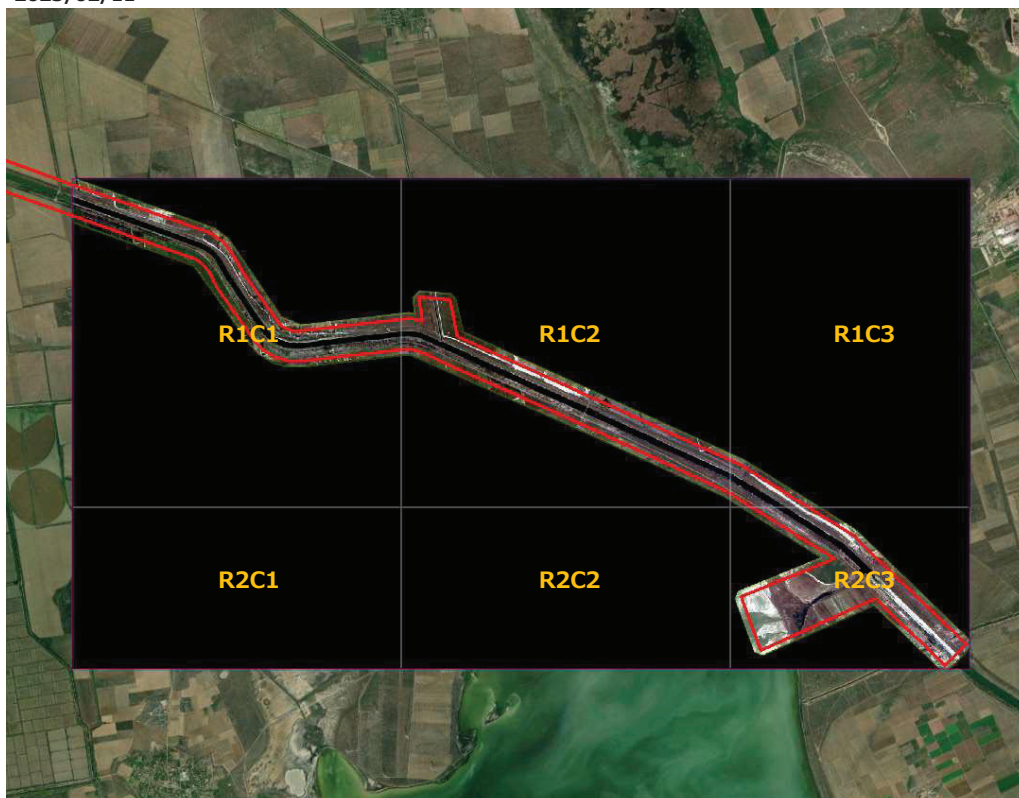
2022/11/05



© PASCO CORPORATION

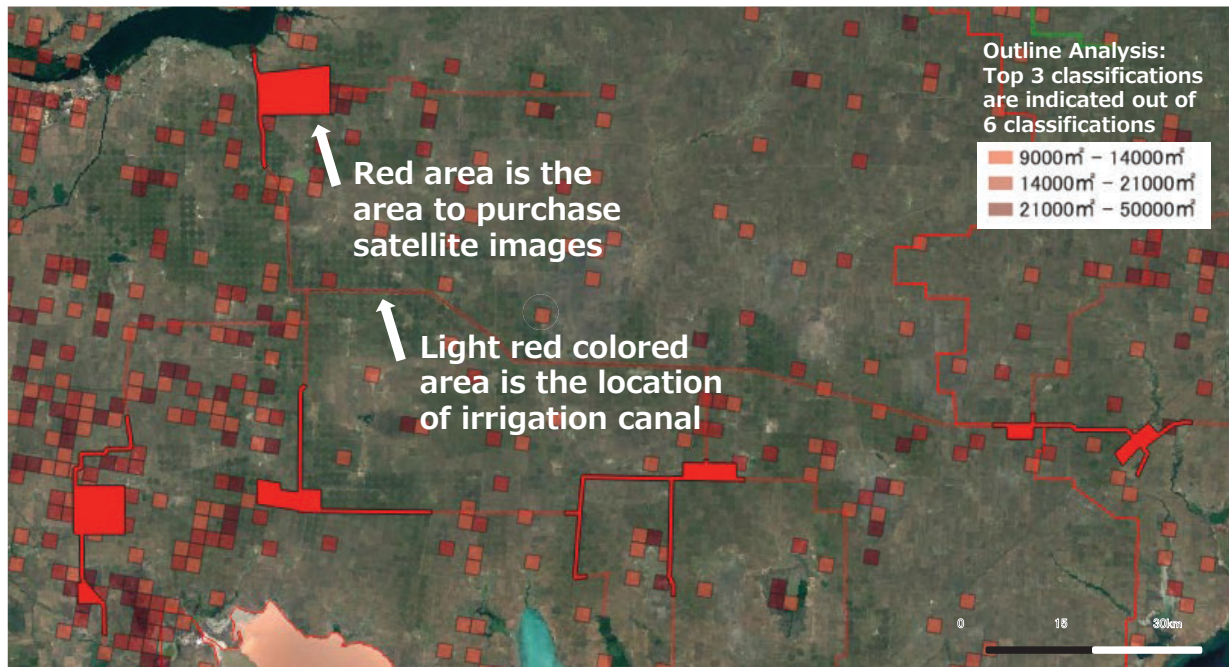
North Crimean Canal

2023/02/11



© PASCO CORPORATION

Kakhovka Canal

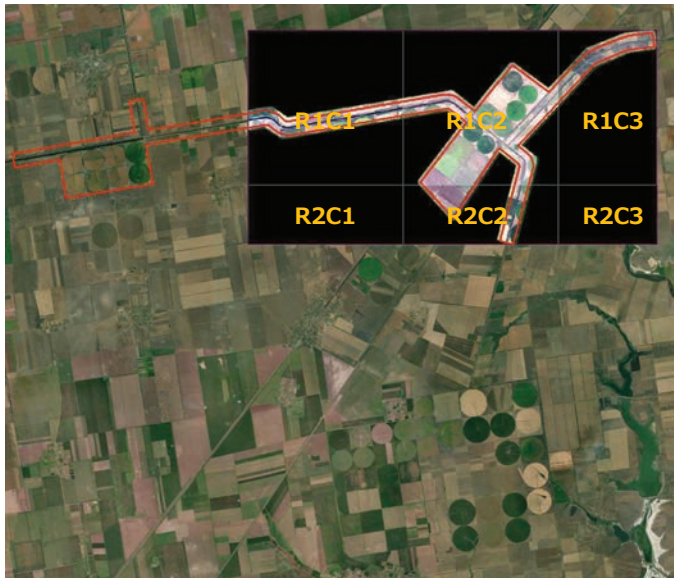


Kakhovka Canal

2023/03/14



2022/08/24

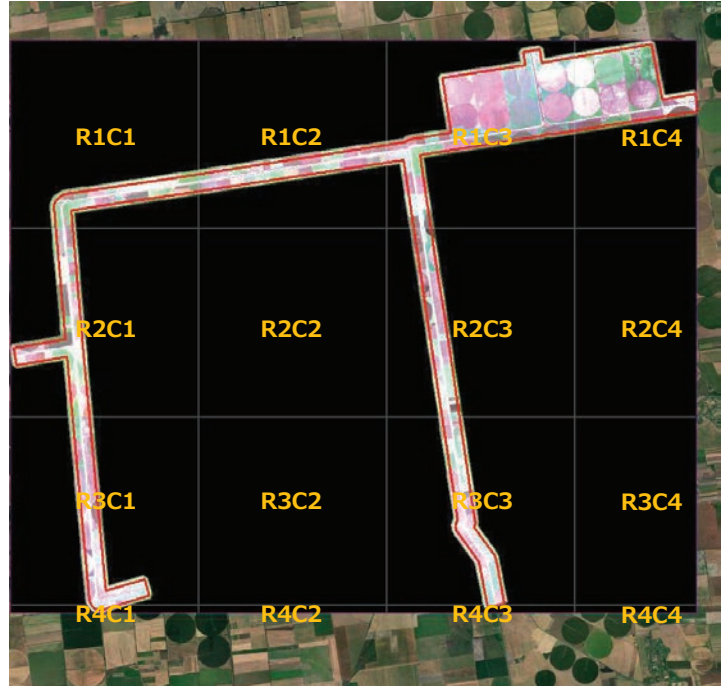


Kakhovka Canal

2023/03/07



2022/12/14



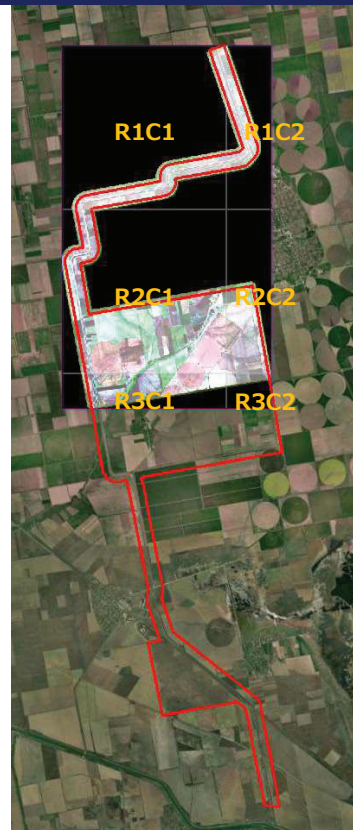
© PASCO CORPORATION

Kakhovka Canal

2022/11/05



2022/11/01



© PASCO CORPORATION

Kakhovka Canal

2022/10/15

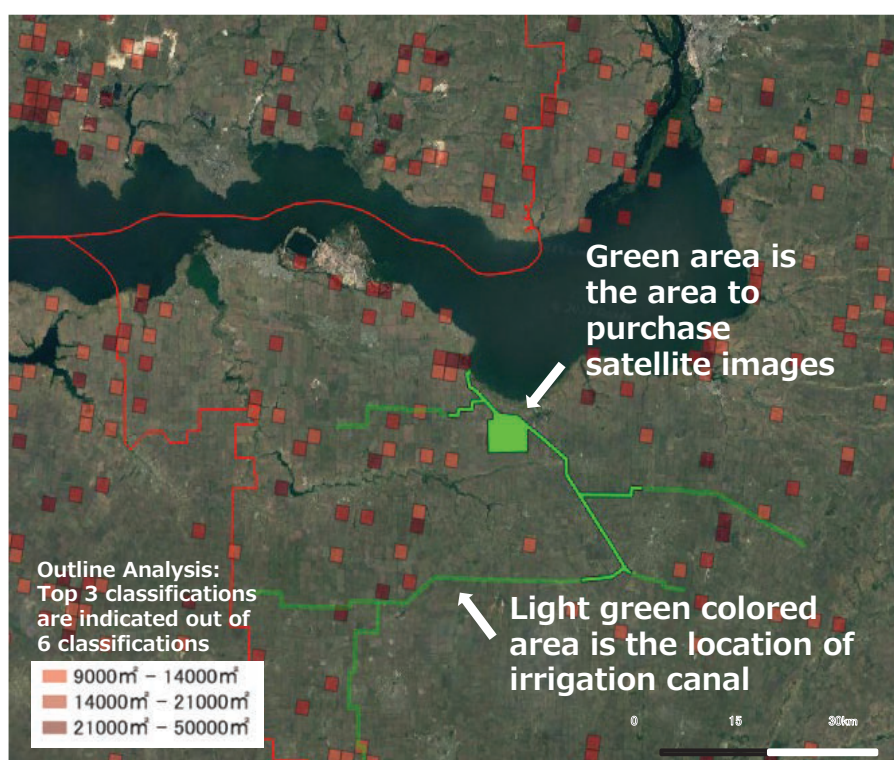


2022/07/31



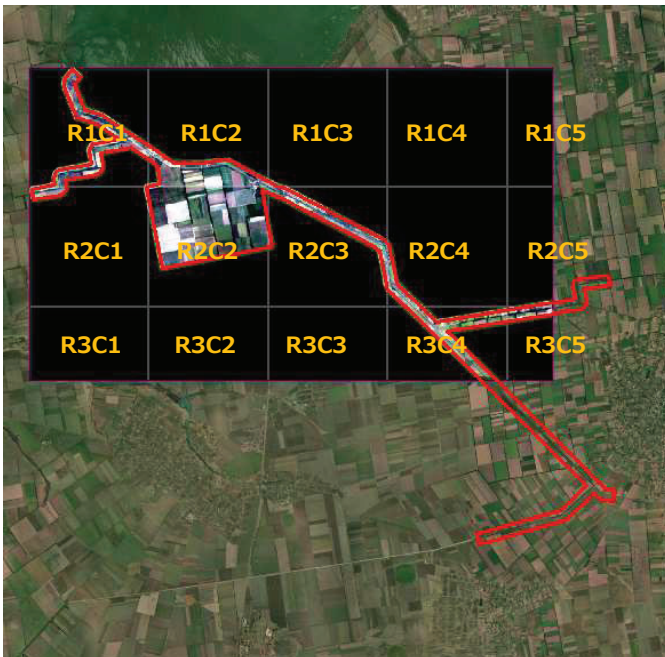
© PASCO CORPORATION

Zaporizhzhia Canal



Zaporizhzhia Canal

2022/08/24

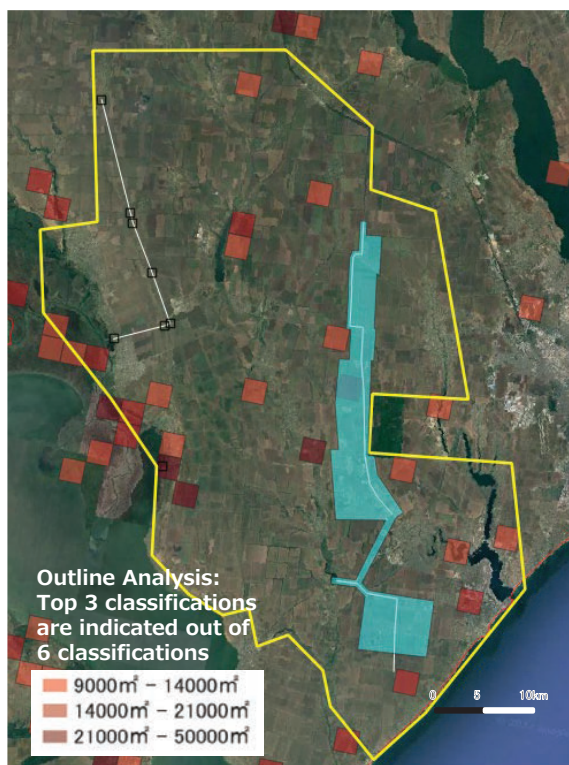


2023/03/09



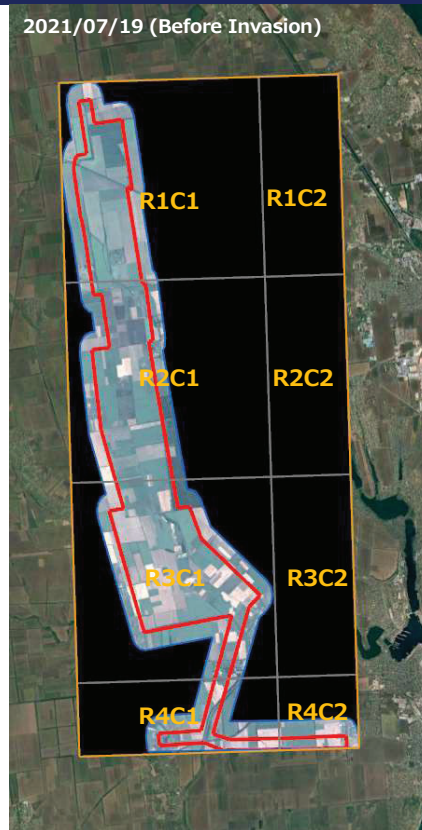
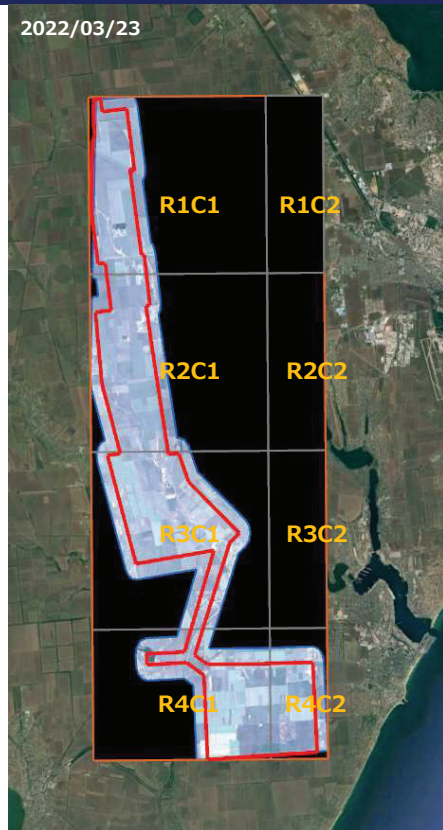
© PASCO CORPORATION

Lower Dniester Irrigation System



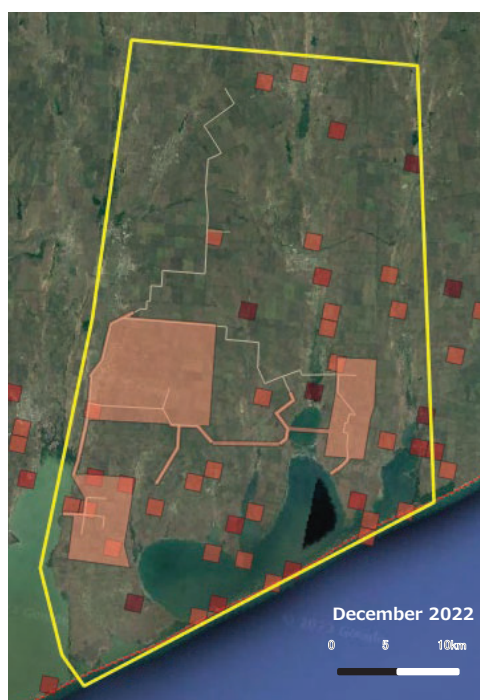
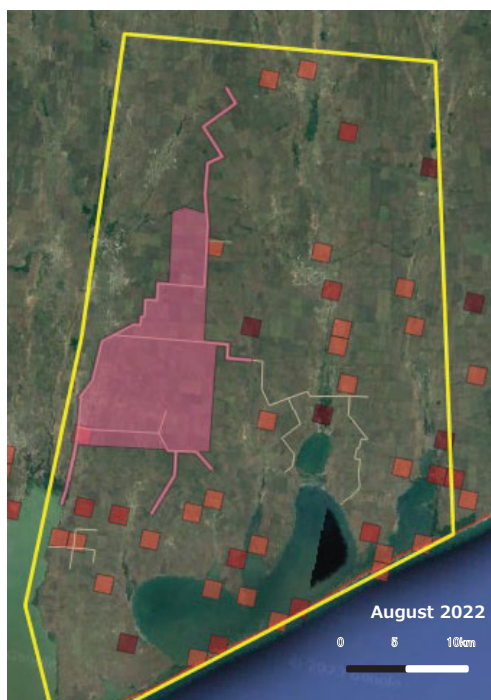
○Light blue area is the area to purchase satellite images
○White colored area is the location of irrigation canal

Lower Dniester Irrigation System



© PASCO CORPORATION

Danube-Dniester Irrigation System

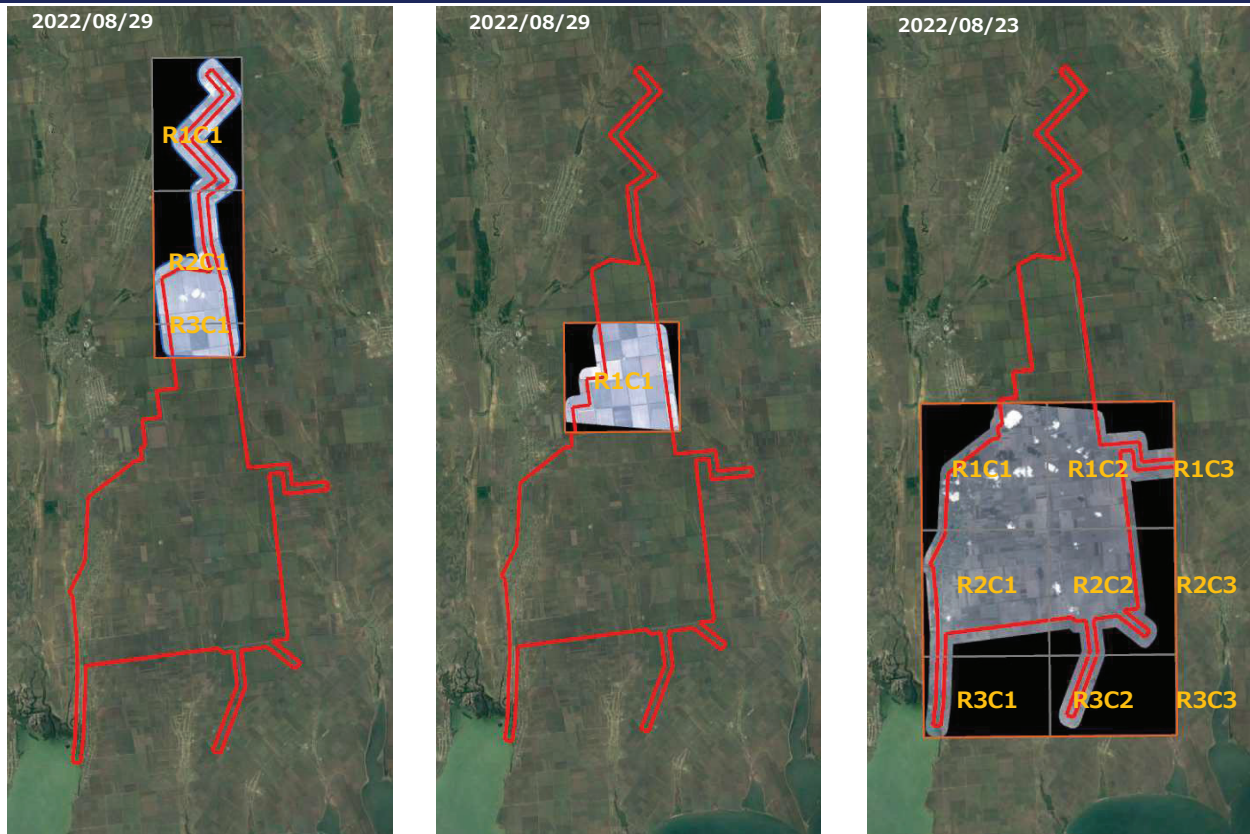


○Red and orange area is the area to purchase satellite images.
○White colored area is the location of irrigation canal

Outline Analysis:
Top 3 classifications are indicated out of 6 classifications

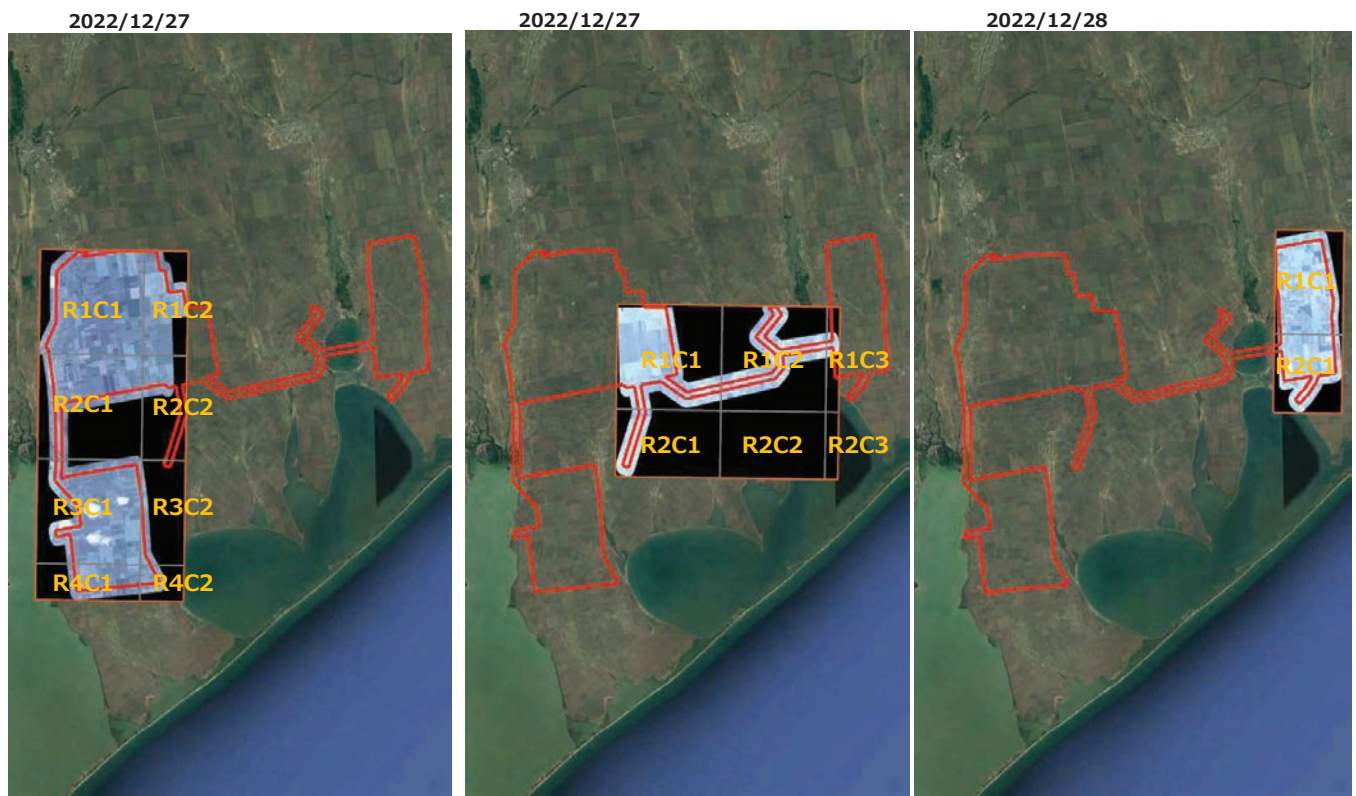
9000m² – 14000m²
14000m² – 21000m²
21000m² – 50000m²

Danube-Dniester Irrigation System



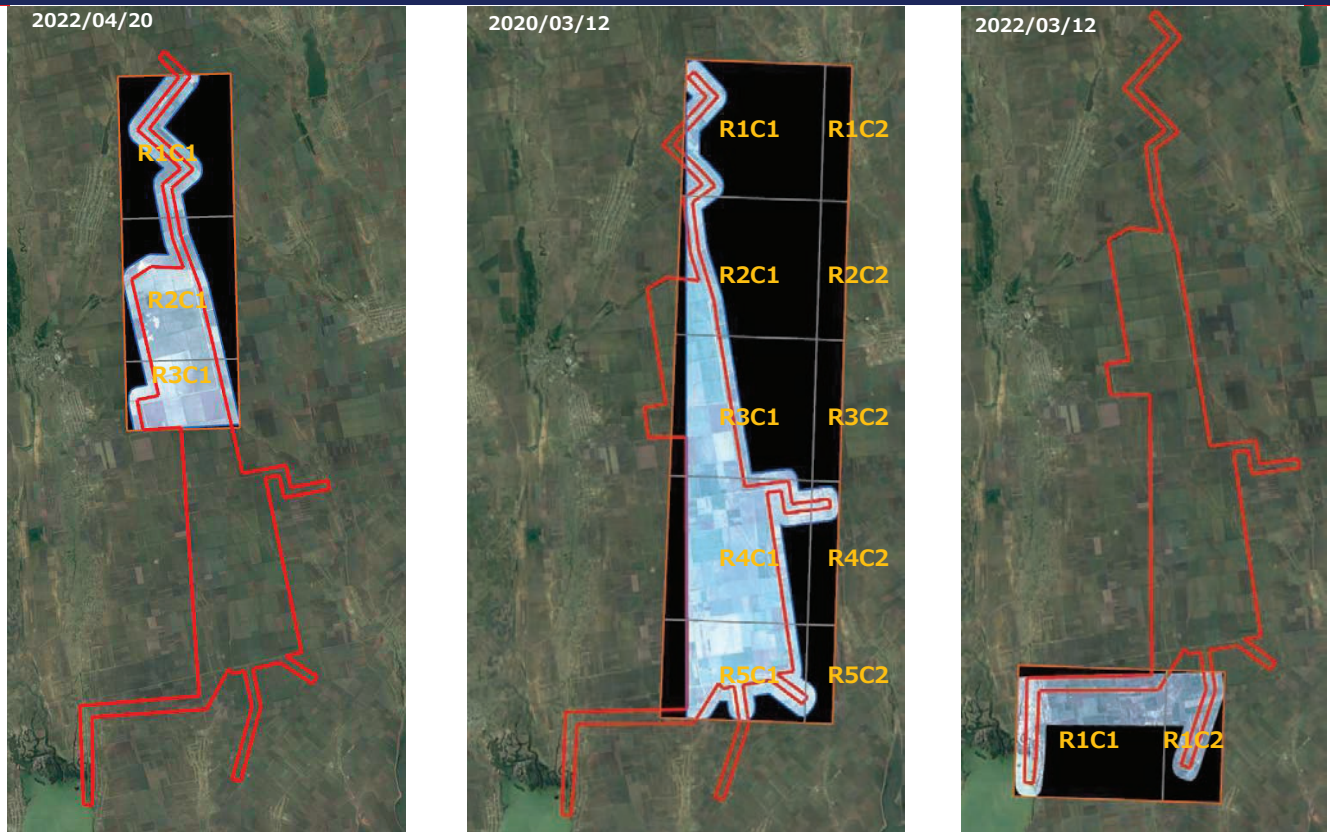
© PASCO CORPORATION

Danube-Dniester Irrigation System



© PASCO CORPORATION

Danube-Dniester Irrigation System



© PASCO CORPORATION

Annex 2.2.10

Result of Manual Verification

Annex. 2.2.10 Result of Manual Verification

Irrigation Scheme	Date	Image	Availability of Satellite Image	Result
North Crimean Canal	20221101	R1C1	○	No damage from the Russian invasion was confirmed at the Kakhovka Dam, but there were traces of what appeared to be trenches dug near the dam embankment.
	20221101	R2C1	○	No damage from the Russian invasion was observed in the canal and bridges, but traces of what appeared to be trenches dug near the road were observed.
	20221105	R1C1	○	There were no damage from the Russian invasion visually.
	20221105	R1C2	○	There were no damage from the Russian invasion visually.
	20221105	R1C3	○	There were no damage from the Russian invasion visually.
	20221105	R1C4	○	There were no damage from the Russian invasion visually.
	20221105	R2C1	○	No damage from the Russian invasion was observed in the canal, but traces of what appeared to be trenches dug near the canal were observed.
	20221105	R2C2	○	No damage from the Russian invasion was observed in the canal, but traces of military use were observed in facilities near the city center.
	20221105	R2C3	○	There were no damage from the Russian invasion visually.
	20221105	R2C4	○	No damage from the Russian invasion was observed in the canal, but an aircraft was observed next to the reservoir.
	20221105	R3C1	○	No damage from the Russian invasion was observed in the canal, but traces of what appeared to be trenches dug near the canal were observed.
	20221105	R3C2	○	The bridge on the main canal was found to have been destroyed.
	20221105	R3C3	○	No damage from the Russian invasion was observed in the canal, but an increase in flow rate was observed.
	20221105	R3C4	○	There were no damage from the Russian invasion visually.
	20230506	R1C1	○	There were no damage from the Russian invasion visually.
	20230506	R1C2	○	No damage from the Russian invasion was observed in the canal, but vehicle tracks were observed in the fields.
	20230506	R1C3	○	There were no damage from the Russian invasion visually.
	20230506	R1C4	—	
	20230506	R2C1	○	No damage from the Russian invasion was observed in the canal, but traces of what appeared to be trenches dug near the canal were observed.
	20230506	R2C2	○	There were no damage from the Russian invasion visually.
	20230506	R2C3	○	No damage from the Russian invasion was observed in the canal, but traces of what appeared to be trenches dug near the canal were observed.
	20230506	R2C4	○	There were no damage from the Russian invasion visually.
	20230506	R3C1	—	
	20230506	R3C2	—	
	20230506	R3C3	—	
	20230506	R3C4	○	There were no damage from the Russian invasion visually.
	20221019	R1C1	—	
	20221019	R1C2	○	No damage from the Russian invasion was observed in the canal, but vehicle tracks were observed in the fields.
	20221019	R2C1	○	No damage from the Russian invasion was observed in the canal, but vehicle tracks were observed in the fields.
	20221019	R2C2	○	There were no damage from the Russian invasion visually.
	20221024	R1C1	○	There were no damage from the Russian invasion visually.
	20221024	R1C2	○	There were no damage from the Russian invasion visually.
	20221024	R1C3	○	There were no damage from the Russian invasion visually.
	20221024	R2C1	○	There were no damage from the Russian invasion visually.
	20221024	R2C2	○	No damage from the Russian invasion was observed in the canal, but traces of what appeared to be trenches dug near the canal were observed.
	20221024	R2C3	○	There were no damage from the Russian invasion visually.
	20221024	R3C1	○	There were no damage from the Russian invasion visually.
	20221024	R3C2	—	
	20221024	R3C3	—	
	20230209	R1C1	—	
	20230209	R1C2	○	There were no damage from the Russian invasion visually.
	20230209	R1C3	○	There were no damage from the Russian invasion visually.
	20230209	R2C1	—	
	20230209	R2C2	○	No damage from the Russian invasion was observed in the canal, but there were traces of vehicle traffic and military use in the fields.
	20230209	R2C3	—	
	20230209	R3C1	○	There were no damage from the Russian invasion visually.
	20230209	R3C2	○	There were no damage from the Russian invasion visually.
	20230209	R3C3	—	
	20230211	R1C1	○	An increase in flow rate was observed.

Irrigation Scheme	Date	Image	Availability of Satellite Image	Result
North Crimean Canal	20230211	R1C2	○	The increase in flow rate and evidence of entrenchment in the field near the canal were observed.
	20230211	R1C3	○	There were no damage from the Russian invasion visually.
	20230211	R2C1	—	
	20230211	R2C2	—	
	20230211	R2C3	○	There were no damage from the Russian invasion visually.
	20230418	R1C1	○	No damage from the Russian invasion was observed in the canal, but traces of what appeared to be trenches dug near the canal were observed.
	20230418	R2C1	○	There were no damage from the Russian invasion visually.
Kakhovka Canal	20220824	R1C1	○	There were no damage from the Russian invasion visually.
	20220824	R1C2	○	There were no damage from the Russian invasion visually.
	20220824	R1C3	○	No damage from the Russian invasion was observed in the canal, but evidence of military use was observed in the facility next to the canal.
	20220824	R2C1	—	
	20220824	R2C2	○	There were no damage from the Russian invasion visually.
	20220824	R2C3	—	
	20230314	R1C1	○	There were no damage from the Russian invasion visually.
	20230314	R1C2	○	There were no damage from the Russian invasion visually.
	20230314	R1C3	○	There were no damage from the Russian invasion visually.
	20230314	R1C4	○	There were no damage from the Russian invasion visually.
	20230314	R2C1	○	There were no damage from the Russian invasion visually.
	20230314	R2C2	○	The evidence of military use was observed in the plots.
	20230314	R2C3	○	There were no damage from the Russian invasion visually.
	20230314	R2C4	○	There were no damage from the Russian invasion visually.
	20230314	R3C1	○	The evidence of military use was observed in the plots.
	20230314	R3C2	○	There were no damage from the Russian invasion visually.
	20230314	R3C3	○	There were no damage from the Russian invasion visually.
	20230314	R3C4	○	There were no damage from the Russian invasion visually.
	20230314	R4C1	—	
	20230314	R4C2	—	
	20230314	R4C3	○	There were no damage from the Russian invasion visually.
	20230314	R4C4	○	There were no damage from the Russian invasion visually.
	20230307	R1C1	○	There were no damage from the Russian invasion visually.
	20230307	R1C2	○	There were no damage from the Russian invasion visually.
	20230307	R2C1	○	No damage to canals, bridges, or other structures caused by the Russian invasion was confirmed, but traces of trenches and vehicle traffic were observed in the fields near the canals.
	20230307	R2C2	○	There were no damage from the Russian invasion visually.
	20230307	R3C1	○	There were no damage from the Russian invasion visually.
	20230307	R3C2	—	
	20221214	R1C1	○	No damage from the Russian invasion was observed in the canal, but vehicle tracks and deformation were observed in the fields near the canal.
	20221214	R1C2	○	There were no damage from the Russian invasion visually.
	20221214	R1C3	○	No damage from the Russian invasion was observed in the canal, but traces of what appeared to be trenches dug near the canal were observed.
	20221214	R1C4	○	There were no damage from the Russian invasion visually.
	20221214	R2C1	○	There were no damage from the Russian invasion visually.
	20221214	R2C2	—	
	20221214	R2C3	○	There were no damage from the Russian invasion visually.
	20221214	R2C4	—	
	20221214	R3C1	○	There were no damage from the Russian invasion visually.
	20221214	R3C2	—	
	20221214	R3C3	○	No damage from the Russian invasion was observed in the canal, but vehicle tracks were observed in the fields near the canal.
	20221214	R3C4	—	
	20221214	R4C1	○	There were no damage from the Russian invasion visually.
	20221214	R4C2	—	
	20221214	R4C3	○	There were no damage from the Russian invasion visually.
	20221214	R4C4	—	
	20221101	R1C1	○	There were no damage from the Russian invasion visually.
	20221101	R1C2	○	There were no damage from the Russian invasion visually.
	20221101	R2C1	○	There were no damage from the Russian invasion visually.
	20221101	R2C2	○	No damage due to the Russian invasion was observed in the canal, but traces of military use were observed in the field.
	20221101	R3C1	○	There were no damage from the Russian invasion visually.
	20221101	R3C2	○	There were no damage from the Russian invasion visually.
	20221105	R1C1	○	There were no damage from the Russian invasion visually.

Irrigation Scheme	Date	Image	Availability of Satellite Image	Result
Kakhovka Canal	20221105	R1C2	○	The canal was not damaged by the Russian invasion, but traces of military use could be observed in the fields near the canal.
	20221105	R2C1	○	There were no damage from the Russian invasion visually.
	20221105	R2C2	○	There were no damage from the Russian invasion visually.
	20221105	R3C1	○	There were no damage from the Russian invasion visually.
	20221105	R3C2	○	There were no damage from the Russian invasion visually.
	20221105	R4C1	○	There were no damage from the Russian invasion visually.
	20221105	R4C2	○	There were no damage from the Russian invasion visually.
	20221015	R1C1	○	There were no damage from the Russian invasion visually.
	20221015	R1C2	—	
	20221015	R1C3	—	
	20221015	R1C4	—	
	20221015	R2C1	○	There were no damage from the Russian invasion visually.
	20221015	R2C2	—	
	20221015	R2C3	—	
	20221015	R2C4	—	
	20221015	R3C1	○	There were no damage from the Russian invasion visually.
	20221015	R3C2	○	There were no damage from the Russian invasion visually.
	20221015	R3C3	○	There were no damage from the Russian invasion visually.
	20221015	R3C4	○	There were no damage from the Russian invasion visually.
	20220731	R1C1	○	There were no damage from the Russian invasion visually.
	20220731	R1C2	○	There were no damage from the Russian invasion visually.
	20220731	R2C1	○	There were no damage from the Russian invasion visually.
	20220731	R2C2	○	No damage from the Russian invasion was observed in the canal, but traces of military use was observed in the fields near the canal.
	20220731	R3C1	○	There were no damage from the Russian invasion visually.
	20220731	R3C2	○	There were no damage from the Russian invasion visually.
Zaporizhzhia Canal	20220824	R1C1	○	There were no damage from the Russian invasion visually.
	20220824	R1C2	○	There were no damage from the Russian invasion visually.
	20220824	R1C3	—	
	20220824	R1C4	—	
	20220824	R1C5	—	
	20220824	R2C1	○	There were no damage from the Russian invasion visually.
	20220824	R2C2	○	There were no damage from the Russian invasion visually.
	20220824	R2C3	○	There were no damage from the Russian invasion visually.
	20220824	R2C4	○	There were no damage from the Russian invasion visually.
	20220824	R2C5	—	
	20220824	R3C1	—	
	20220824	R3C2	—	
	20220824	R3C3	—	
	20220824	R3C4	○	No damage from the Russian invasion was observed at the canal and pumping station, but traces of trenches and vehicle traffic were observed in the fields near the canal.
	20220824	R3C5	○	No damage from the Russian invasion was observed at the canal, but traces of entrenchment were observed in the field near the canal.
	20230309	R1C1	○	No damage from the Russian invasion was observed at the canal and pumping station, but traces of entrenchment and vehicle traffic were observed in the field near the canal.
	20230309	R1C2	○	No damage from the Russian invasion was observed at the canal and pumping station, but traces of entrenchment and vehicle traffic were observed.
	20230309	R2C1	○	No damage due to the Russian invasion was observed at the canal, but traces of trenches and vehicle traffic were observed.
	20230309	R2C2	○	No damage from the Russian invasion was observed in the canal or bridge, but traces of trenches and vehicle tracks were observed in the field near the canal.
	20230309	R3C1	○	There were no damage from the Russian invasion visually.
	20230309	R3C2	○	There were no damage from the Russian invasion visually.
Lower Dniester Irrigation System	20220323	R1C1	○	There were no damage from the Russian invasion visually.
	20220323	R2C1	○	There were no damage from the Russian invasion visually.
	20220323	R3C1	○	There were no damage from the Russian invasion visually.
	20220323	R4C1	○	There were no damage from the Russian invasion visually.
	20220323	R1C2	—	
	20220323	R2C2	—	
	20220323	R3C2	—	
	20220323	R4C2	○	There were no damage from the Russian invasion visually.
Danube-Dniester Irrigation System	20220829	R1C1	○	There were no damage from the Russian invasion visually.
	20220829	R2C1	○	There were no damage from the Russian invasion visually.
	20220829	R3C1	○	There were no damage from the Russian invasion visually.
	20220829	R1C1	○	There were no damage from the Russian invasion visually.
	20220823	R1C1	○	There were no damage from the Russian invasion visually.

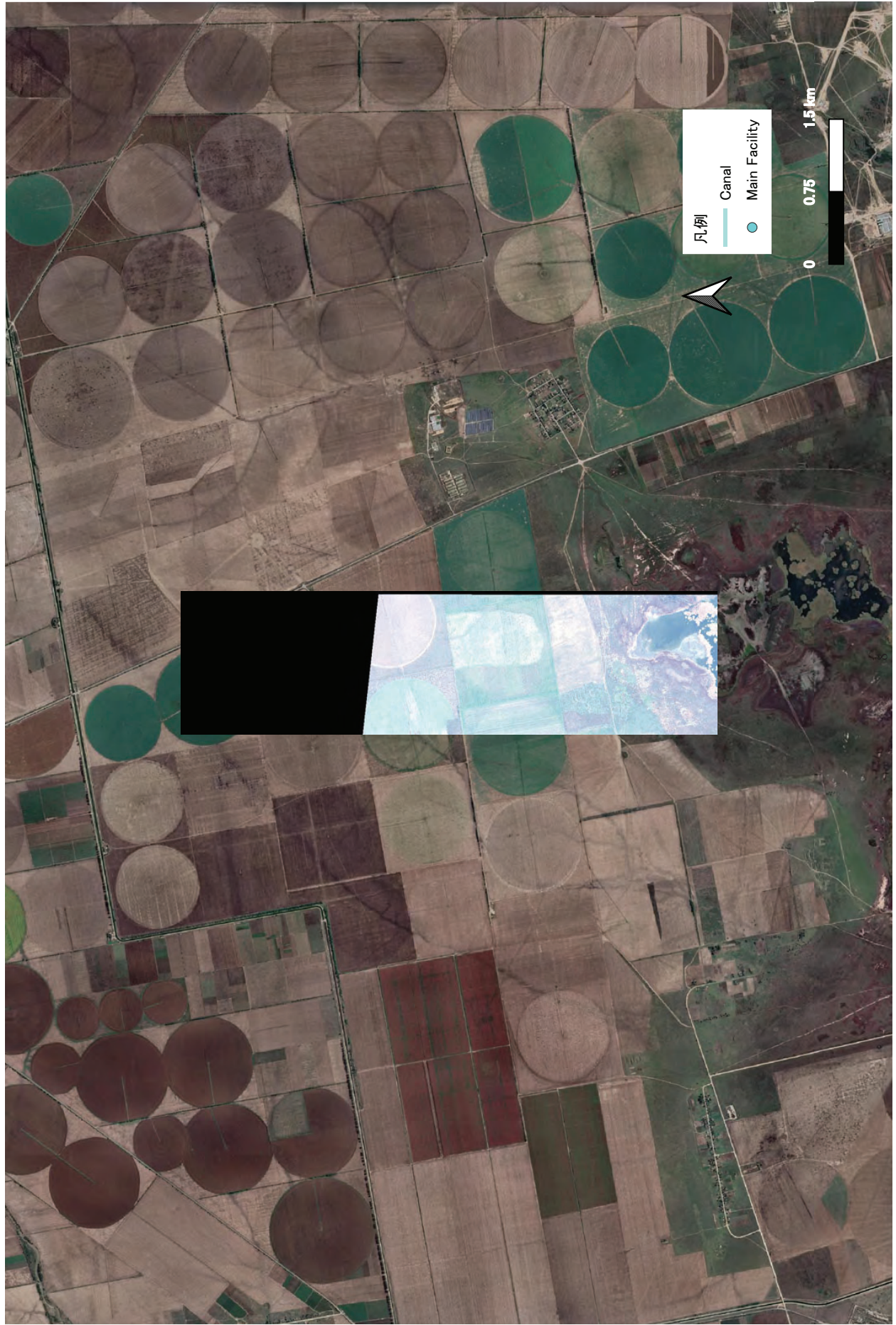
Irrigation Scheme	Date	Image	Availability of Satellite Image	Result
Danube-Dniester Irrigation System	20220823	R2C1	○	There were no damage from the Russian invasion visually.
	20220823	R3C1	○	There were no damage from the Russian invasion visually.
	20220823	R1C2	○	There were no damage from the Russian invasion visually.
	20220823	R2C2	○	There were no damage from the Russian invasion visually.
	20220823	R3C2	○	There were no damage from the Russian invasion visually.
	20220823	R1C3	—	
	20220823	R2C3	—	
	20220823	R3C3	—	
	20221227	R1C1	○	There were no damage from the Russian invasion visually.
	20221227	R2C1	○	There were no damage from the Russian invasion visually.
	20221227	R3C1	○	There were no damage from the Russian invasion visually.
	20221227	R4C1	○	There were no damage from the Russian invasion visually.
	20221227	R1C2	○	There were no damage from the Russian invasion visually.
	20221227	R2C2	○	There were no damage from the Russian invasion visually.
	20221227	R3C2	○	There were no damage from the Russian invasion visually.
	20221227	R4C2	○	There were no damage from the Russian invasion visually.
	20221227	R1C1	○	There were no damage from the Russian invasion visually.
	20221227	R2C1	○	There were no damage from the Russian invasion visually.
	20221227	R1C2	○	There were no damage from the Russian invasion visually.
	20221227	R2C2	—	
	20221227	R1C3	○	There were no damage from the Russian invasion visually.
	20221227	R2C3	—	
	20221228	R1C1	○	There were no damage from the Russian invasion visually.
	20221228	R2C1	○	There were no damage from the Russian invasion visually.





North Crimean Canal、2022/11/5、R1C3





North Crimean Canal, 2022/11/5, R2C3







